

Data Path : Z:\pestpcbsrv\HPCHEM1\ECD_D\Data\PD102921\
 Data File : PD066618.D
 Signal(s) : Signal #1: ECD1A.ch Signal #2: ECD2B.ch
 Acq On : 28 Oct 2021 18:08
 Operator : AJ\MA
 Sample : PSTDCCC050
 Misc :
 ALS Vial : 4 Sample Multiplier: 1

Instrument :
 ECD_D
 ClientSampleId :

Integration File signal 1: autoint1.e
 Integration File signal 2: autoint2.e
 Quant Time: Oct 29 02:04:57 2021
 Quant Method : Z:\pestpcbsrv\HPCHEM1\ECD_D\Method\PD102821.M
 Quant Title : GC Extractables
 QLast Update : Thu Oct 28 02:17:57 2021
 Response via : Initial Calibration
 Integrator: ChemStation

Volume Inj. : 2 µl
 Signal #1 Phase : ZB-MR2 Signal #2 Phase: ZB-MR1
 Signal #1 Info : 30M x 0.32mm x0.2 Signal #2 Info : 30M x 0.32mm x 0.50µm

	Compound	RT#1	RT#2	Resp#1	Resp#2	ng/ml	ng/ml

System Monitoring Compounds							
1)	SA Tetrachlo...	3.439	3.969	91686672	390.6E6	49.140	48.272
28)	SA Decachlor...	8.164	9.022	55314132	262.0E6	47.874	48.634
Target Compounds							
2)	A alpha-BHC	3.876	4.362	153.5E6	534.4E6	50.198	48.439
3)	MA gamma-BHC...	4.158	4.647	143.0E6	483.5E6	47.350	48.517
4)	MA Heptachlor	4.451	5.146	148.0E6	466.8E6	49.901	47.619
5)	MB Aldrin	4.696	5.450	145.0E6	439.8E6	50.300	48.451
6)	B beta-BHC	4.406	4.823	59366458	220.5E6	47.526	47.350
7)	B delta-BHC	4.608	5.039	135.5E6	453.2E6	50.416	49.586
8)	B Heptachlo...	5.137	5.838	129.1E6	369.8E6	49.896	51.022
9)	A Endosulfan I	5.474	6.195	118.3E6	381.1E6	49.830	48.328
10)	B gamma-Chl...	5.361	6.072	130.4E6	405.2E6	50.060	48.562
11)	B alpha-Chl...	5.420	6.144	127.7E6	400.4E6	49.770	48.269
12)	B 4,4'-DDE	5.583	6.304	117.7E6	385.0E6	50.524	48.852
13)	MA Dieldrin	5.716	6.453	125.4E6	403.3E6	50.111	48.608
14)	MA Endrin	5.972	6.672	99362264	317.6E6	47.477	46.149
15)	B Endosulfa...	6.245	6.886	97753529	343.0E6	49.158	48.580
16)	A 4,4'-DDD	6.098	6.798	94629553	333.3E6	50.473	49.043
17)	MA 4,4'-DDT	6.336	7.095	97354152	354.3E6	50.614	48.854
18)	B Endrin al...	6.414	7.011	76313535	277.9E6	49.370	48.860
19)	B Endosulfa...	6.626	7.233	91655148	351.8E6	49.247	48.494
20)	A Methoxychlor	6.884	7.557	50129668	197.7E6	48.543	48.520
21)	B Endrin ke...	7.117	7.706	107.8E6	410.5E6	49.410	48.817
22)	Mirex	7.299	8.154	74560439	281.8E6	47.931	47.649
23)	Chlordane-1	4.330f	0.000	1378258	0	18.626	N.D. #
24)	Chlordane-2	0.000	5.450f	0	439.8E6	N.D.	1482.768 #
25)	Chlordane-3	5.361	6.072	130.4E6	405.2E6	532.691	375.783 #
26)	Chlordane-4	5.420	6.144	127.7E6	400.4E6	627.027	317.700 #
27)	Chlordane-5	6.245	0.000	97753529	0	1155.873	N.D. #

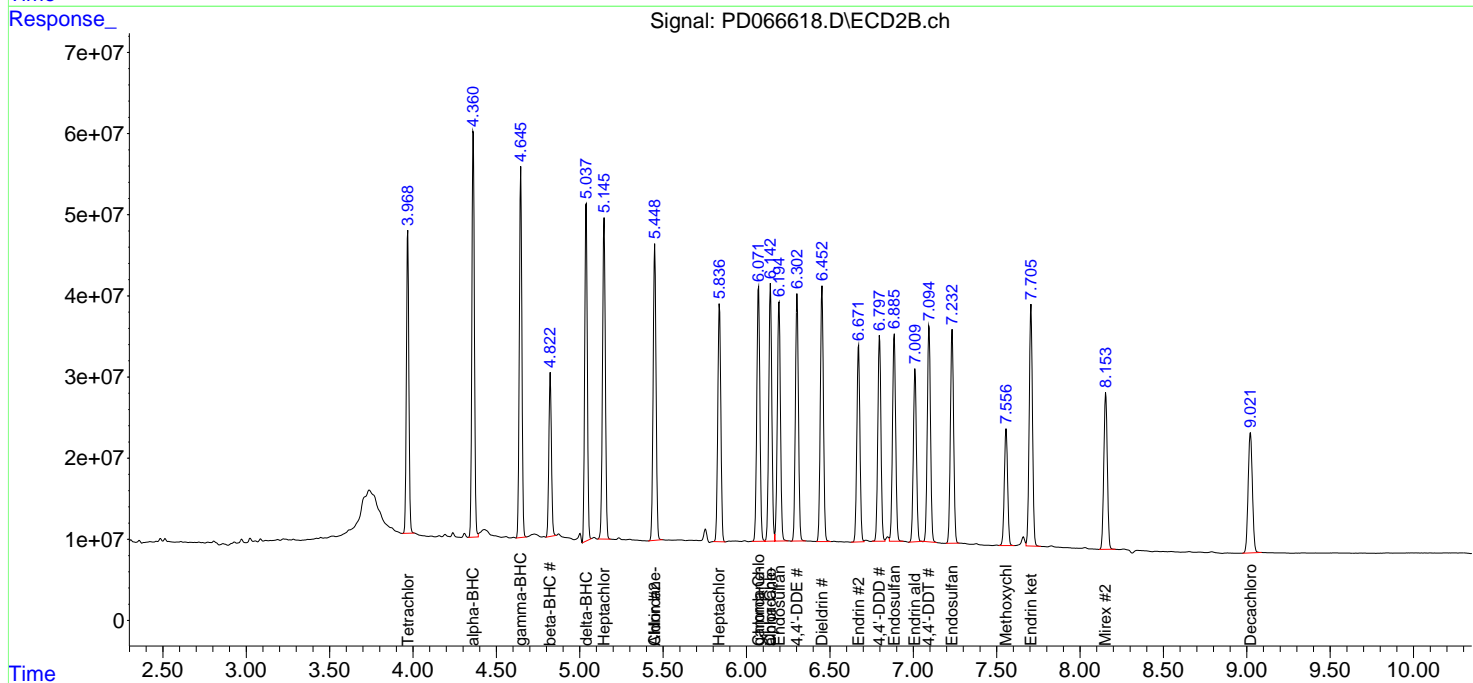
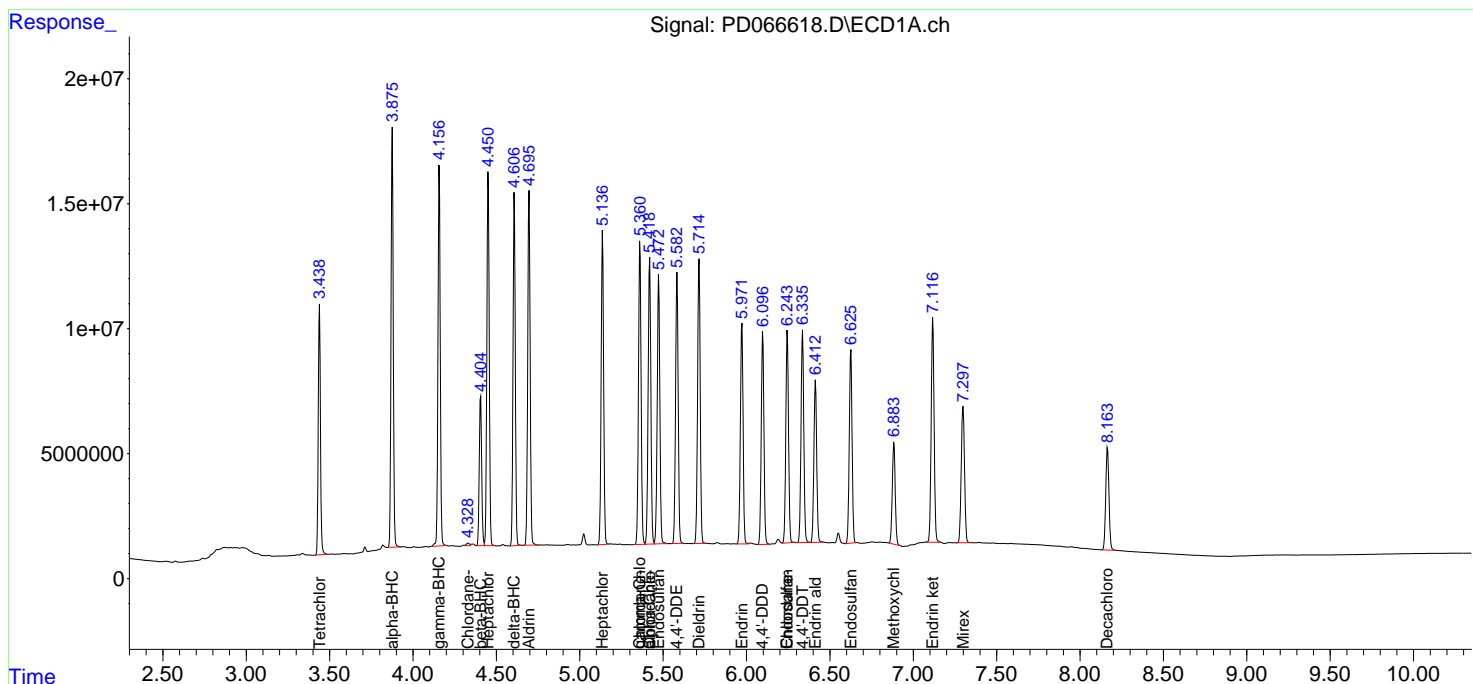
(f)=RT Delta > 1/2 Window (#)=Amounts differ by > 25% (m)=manual int.

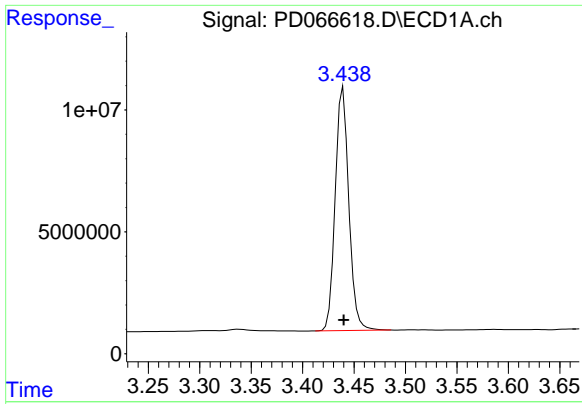
Data Path : Z:\pestpcbsrv\HPCHEM1\ECD_D\Data\PD102921\
 Data File : PD066618.D
 Signal(s) : Signal #1: ECD1A.ch Signal #2: ECD2B.ch
 Acq On : 28 Oct 2021 18:08
 Operator : AJ\MA
 Sample : PSTDCCC050
 Misc :
 ALS Vial : 4 Sample Multiplier: 1

Instrument :
 ECD_D
 ClientSampleId :

Integration File signal 1: autoint1.e
 Integration File signal 2: autoint2.e
 Quant Time: Oct 29 02:04:57 2021
 Quant Method : Z:\pestpcbsrv\HPCHEM1\ECD_D\Method\PD102821.M
 Quant Title : GC Extractables
 QLast Update : Thu Oct 28 02:17:57 2021
 Response via : Initial Calibration
 Integrator: ChemStation

Volume Inj. : 2 µl
 Signal #1 Phase : ZB-MR2 Signal #2 Phase: ZB-MR1
 Signal #1 Info : 30M x 0.32mm x0.2 Signal #2 Info : 30M x 0.32mm x 0.50µm

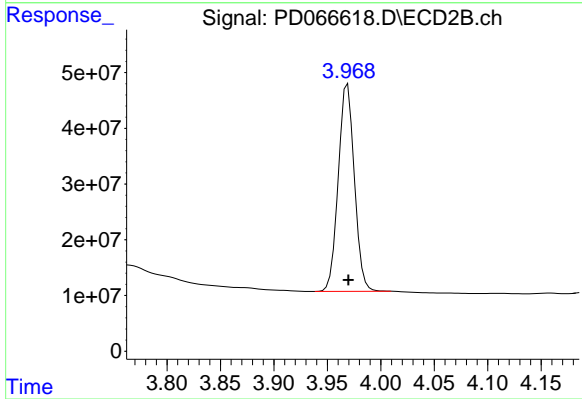




#1 Tetrachloro-m-xylene

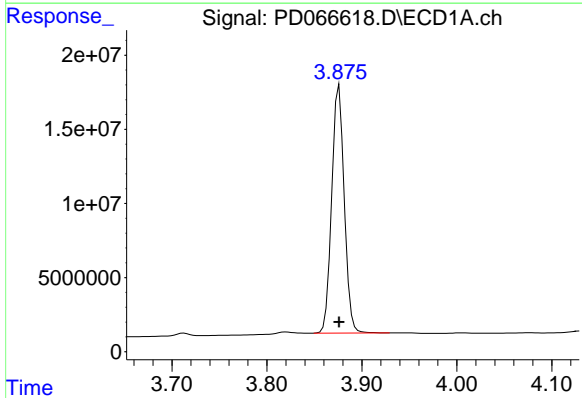
R.T.: 3.439 min
 Delta R.T.: 0.000 min
 Response: 91686672
 Conc: 49.14 ng/ml

Instrument :
 ECD_D
 ClientSampleId :



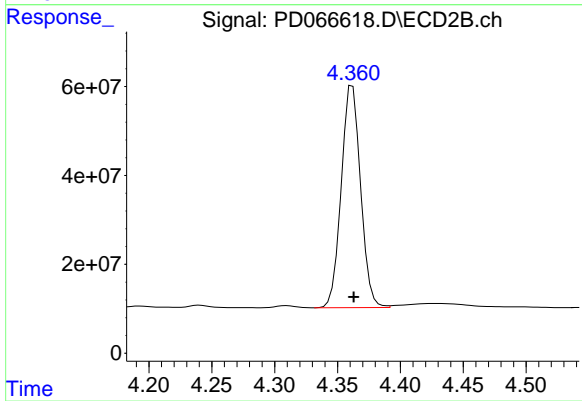
#1 Tetrachloro-m-xylene

R.T.: 3.969 min
 Delta R.T.: 0.000 min
 Response: 390624769
 Conc: 48.27 ng/ml



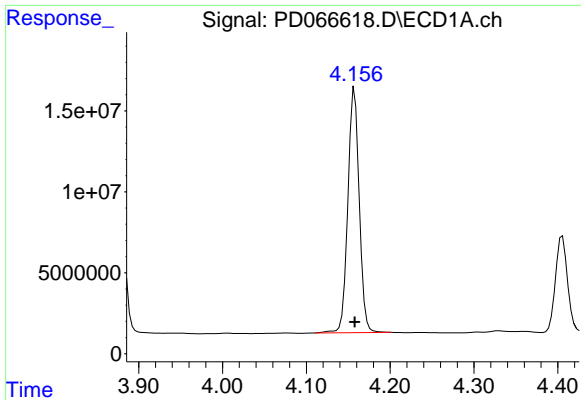
#2 alpha-BHC

R.T.: 3.876 min
 Delta R.T.: 0.000 min
 Response: 153472466
 Conc: 50.20 ng/ml



#2 alpha-BHC

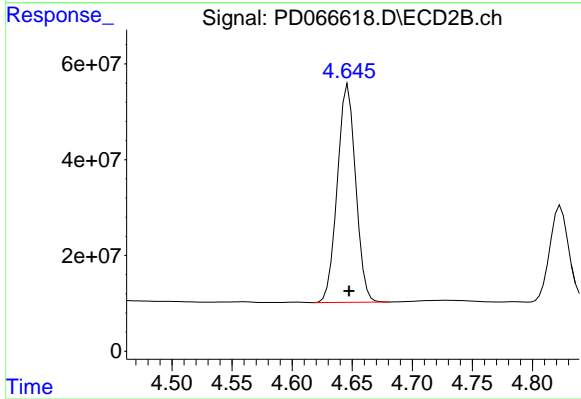
R.T.: 4.362 min
 Delta R.T.: 0.000 min
 Response: 534412496
 Conc: 48.44 ng/ml



#3 gamma-BHC (Lindane)

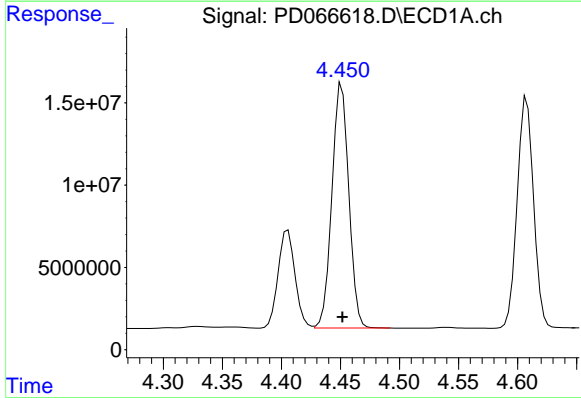
R.T.: 4.158 min
 Delta R.T.: 0.000 min
 Response: 142995390
 Conc: 47.35 ng/ml

Instrument :
 ECD_D
 ClientSampleId :



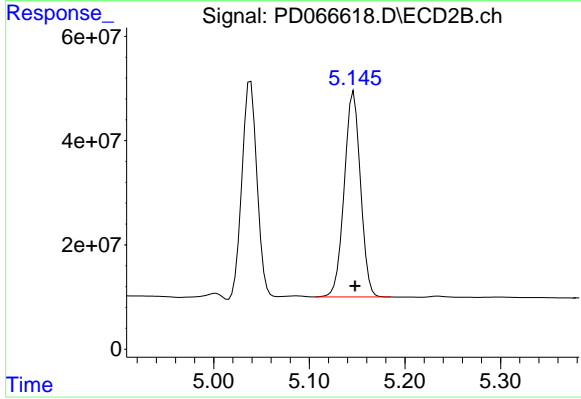
#3 gamma-BHC (Lindane)

R.T.: 4.647 min
 Delta R.T.: 0.000 min
 Response: 483482029
 Conc: 48.52 ng/ml



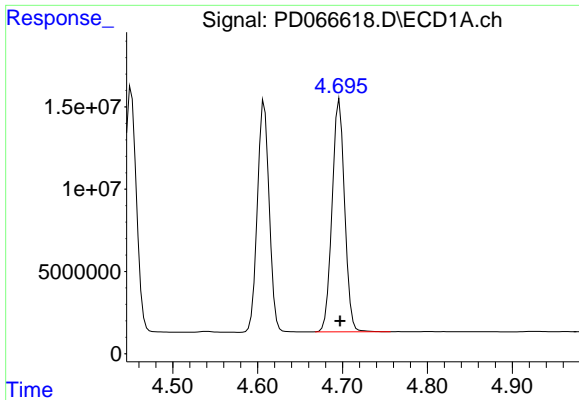
#4 Heptachlor

R.T.: 4.451 min
 Delta R.T.: 0.000 min
 Response: 148038586
 Conc: 49.90 ng/ml



#4 Heptachlor

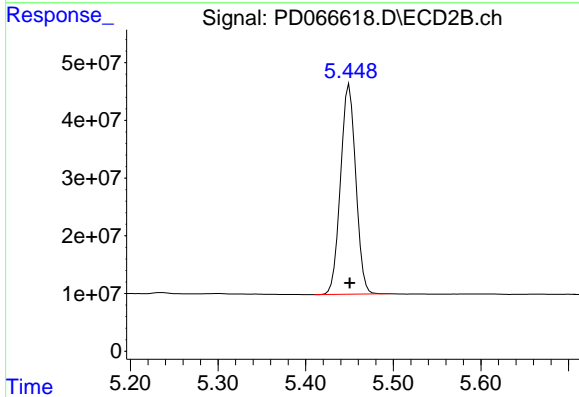
R.T.: 5.146 min
 Delta R.T.: -0.001 min
 Response: 466760640
 Conc: 47.62 ng/ml



#5 Aldrin

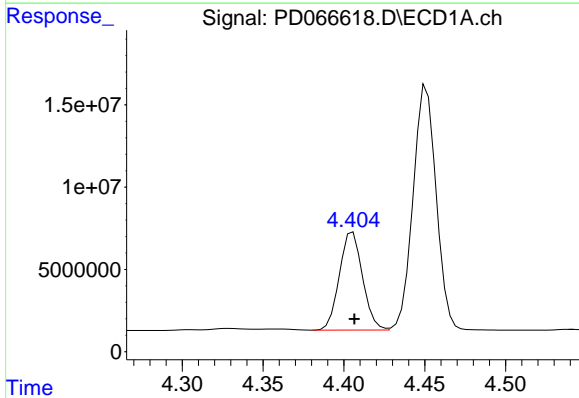
R.T.: 4.696 min
 Delta R.T.: 0.000 min
 Response: 144954845
 Conc: 50.30 ng/ml

Instrument :
 ECD_D
 ClientSampleId :



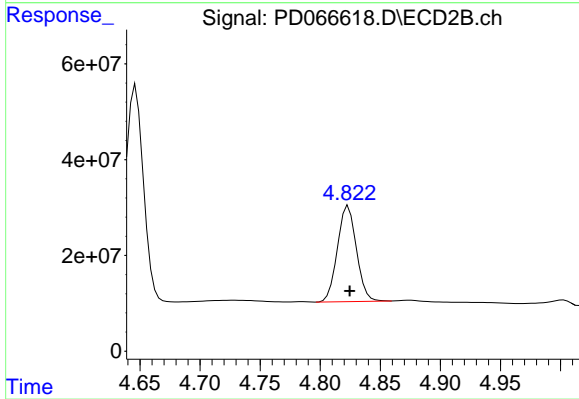
#5 Aldrin

R.T.: 5.450 min
 Delta R.T.: 0.000 min
 Response: 439817204
 Conc: 48.45 ng/ml



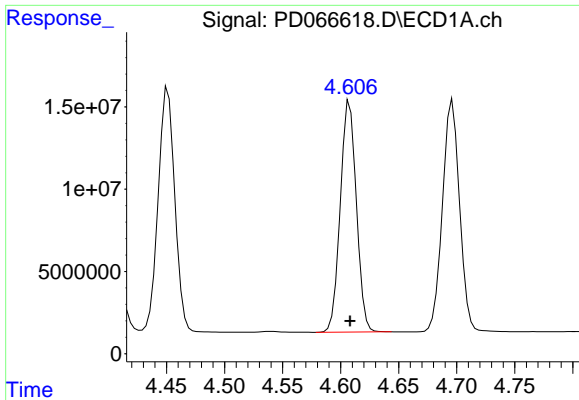
#6 beta-BHC

R.T.: 4.406 min
 Delta R.T.: 0.000 min
 Response: 59366458
 Conc: 47.53 ng/ml



#6 beta-BHC

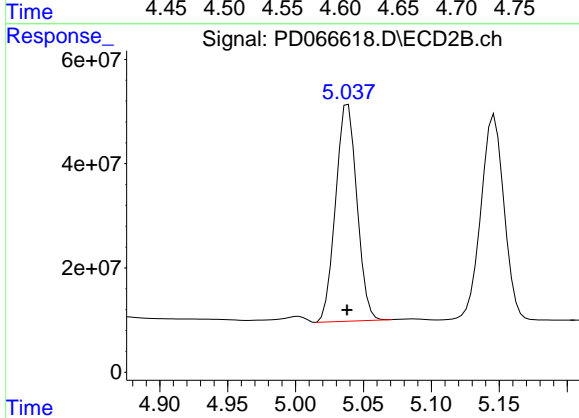
R.T.: 4.823 min
 Delta R.T.: -0.001 min
 Response: 220480118
 Conc: 47.35 ng/ml



#7 delta-BHC

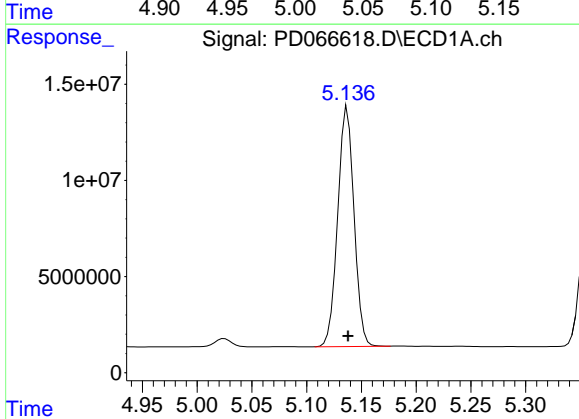
R.T.: 4.608 min
Delta R.T.: 0.000 min
Response: 135531749
Conc: 50.42 ng/ml

Instrument :
ECD_D
ClientSampleId :



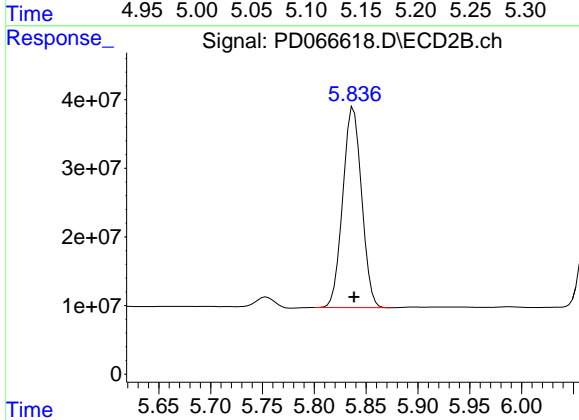
#7 delta-BHC

R.T.: 5.039 min
Delta R.T.: 0.000 min
Response: 453235937
Conc: 49.59 ng/ml



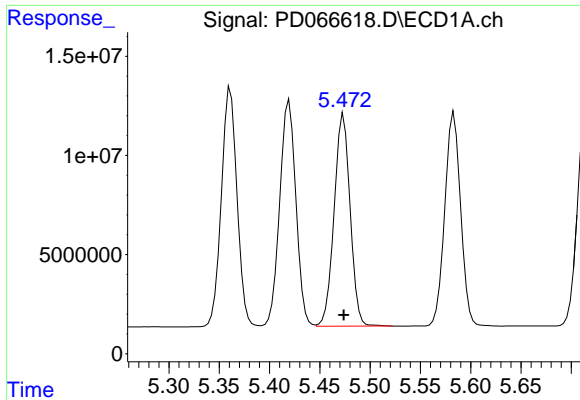
#8 Heptachlor epoxide

R.T.: 5.137 min
Delta R.T.: 0.000 min
Response: 129062988
Conc: 49.90 ng/ml



#8 Heptachlor epoxide

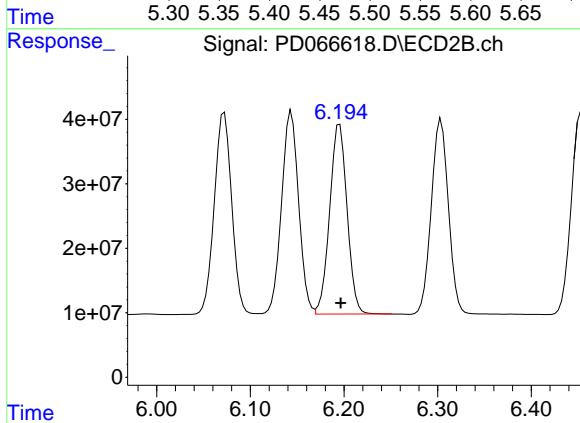
R.T.: 5.838 min
Delta R.T.: 0.000 min
Response: 369799340
Conc: 51.02 ng/ml



#9 Endosulfan I

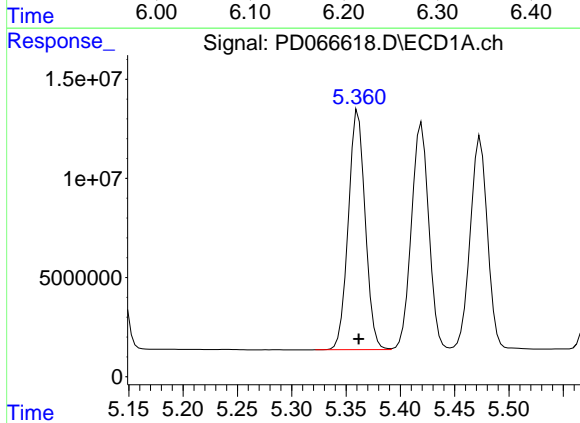
R.T.: 5.474 min
 Delta R.T.: 0.000 min
 Response: 118334807
 Conc: 49.83 ng/ml

Instrument :
 ECD_D
 ClientSampleId :



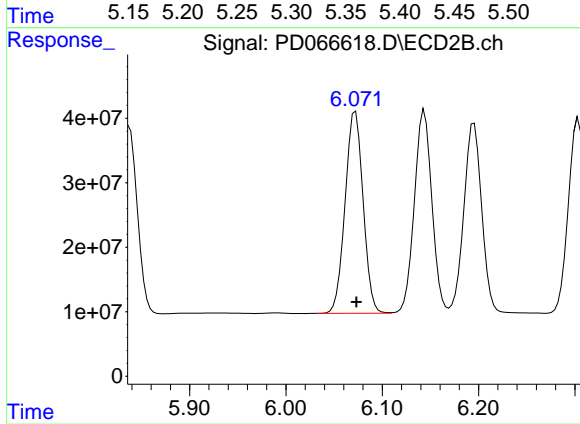
#9 Endosulfan I

R.T.: 6.195 min
 Delta R.T.: -0.001 min
 Response: 381064681
 Conc: 48.33 ng/ml



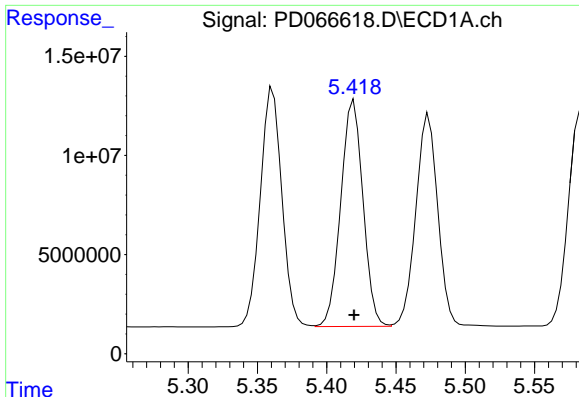
#10 gamma-Chlordane

R.T.: 5.361 min
 Delta R.T.: 0.000 min
 Response: 130427148
 Conc: 50.06 ng/ml



#10 gamma-Chlordane

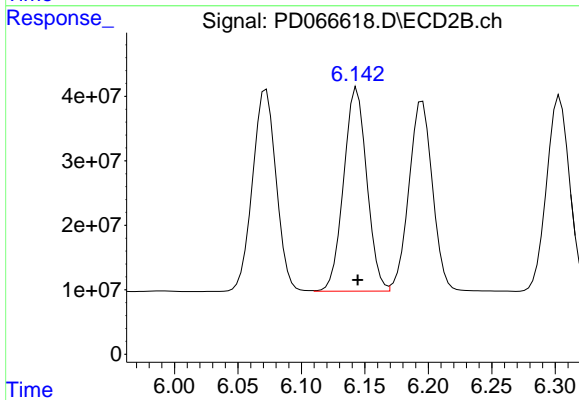
R.T.: 6.072 min
 Delta R.T.: 0.000 min
 Response: 405159355
 Conc: 48.56 ng/ml



#11 alpha-Chlordane

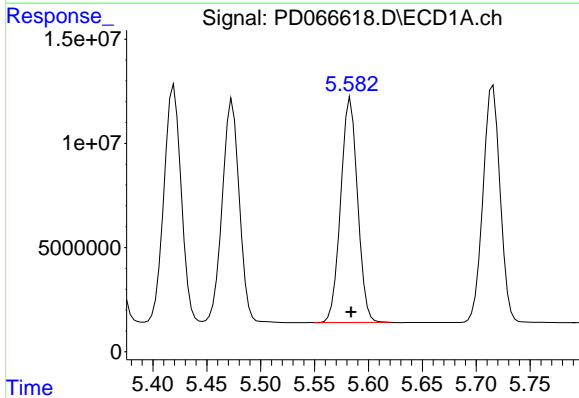
R.T.: 5.420 min
Delta R.T.: 0.000 min
Response: 127725172
Conc: 49.77 ng/ml

Instrument :
ECD_D
ClientSampleId :



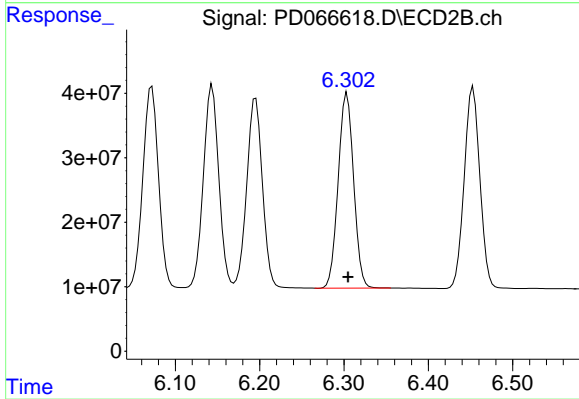
#11 alpha-Chlordane

R.T.: 6.144 min
Delta R.T.: 0.000 min
Response: 400373124
Conc: 48.27 ng/ml



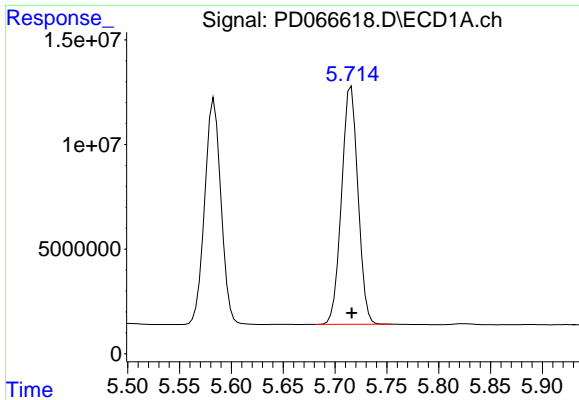
#12 4,4'-DDE

R.T.: 5.583 min
Delta R.T.: 0.000 min
Response: 117713179
Conc: 50.52 ng/ml



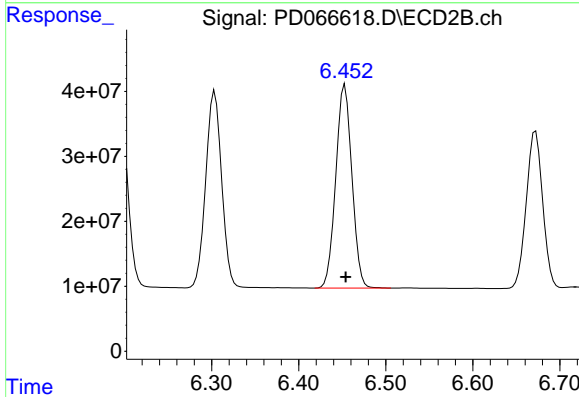
#12 4,4'-DDE

R.T.: 6.304 min
Delta R.T.: -0.001 min
Response: 384993156
Conc: 48.85 ng/ml

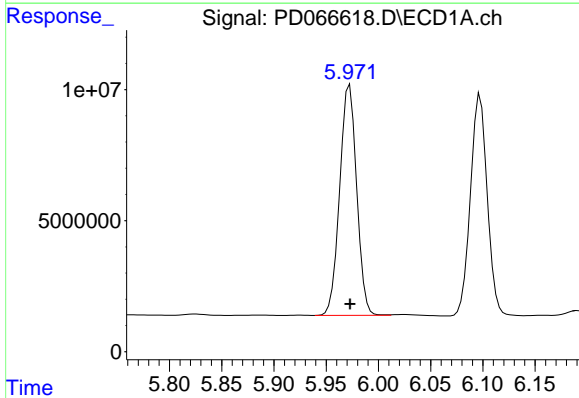


#13 Dieldrin
 R.T.: 5.716 min
 Delta R.T.: 0.000 min
 Response: 125392613
 Conc: 50.11 ng/ml

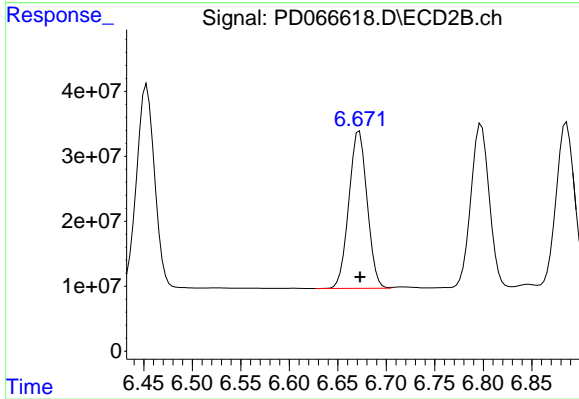
Instrument :
 ECD_D
 ClientSampleId :



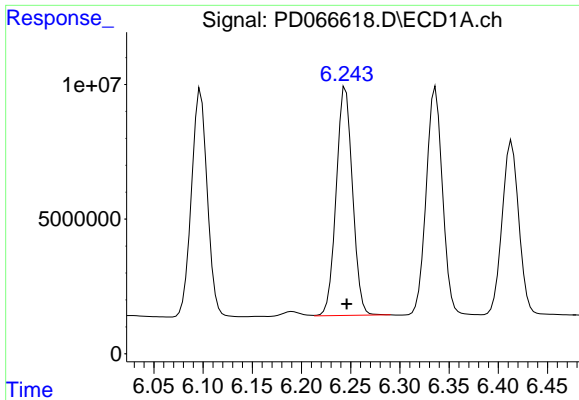
#13 Dieldrin
 R.T.: 6.453 min
 Delta R.T.: 0.000 min
 Response: 403331508
 Conc: 48.61 ng/ml



#14 Endrin
 R.T.: 5.972 min
 Delta R.T.: 0.000 min
 Response: 99362264
 Conc: 47.48 ng/ml



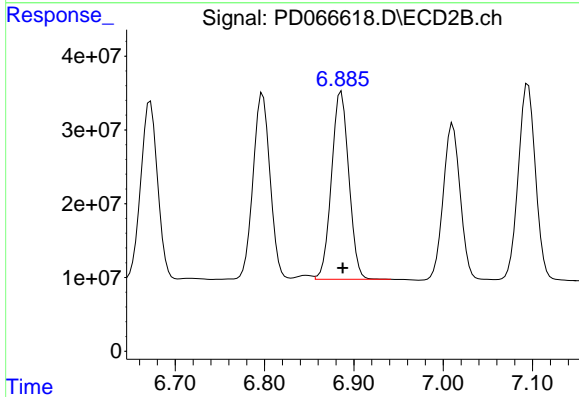
#14 Endrin
 R.T.: 6.672 min
 Delta R.T.: 0.000 min
 Response: 317619771
 Conc: 46.15 ng/ml



#15 Endosulfan II

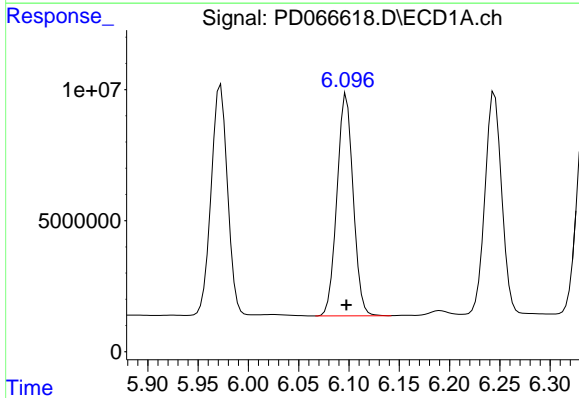
R.T.: 6.245 min
 Delta R.T.: -0.001 min
 Response: 97753529
 Conc: 49.16 ng/ml

Instrument :
 ECD_D
 ClientSampleId :



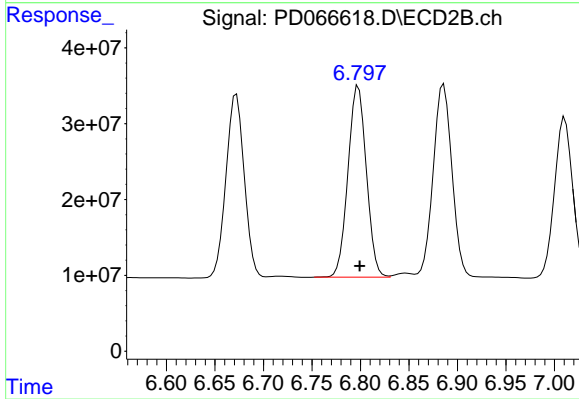
#15 Endosulfan II

R.T.: 6.886 min
 Delta R.T.: -0.002 min
 Response: 343004102
 Conc: 48.58 ng/ml



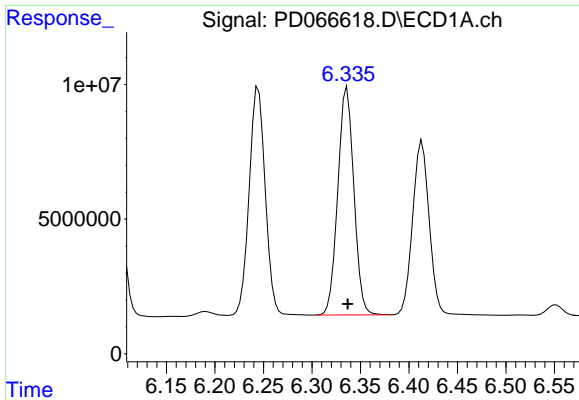
#16 4,4'-DDD

R.T.: 6.098 min
 Delta R.T.: 0.000 min
 Response: 94629553
 Conc: 50.47 ng/ml



#16 4,4'-DDD

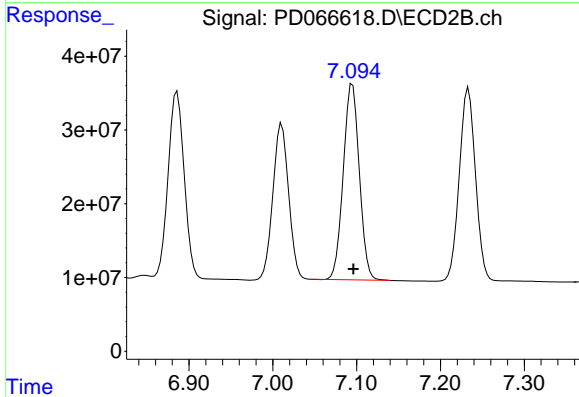
R.T.: 6.798 min
 Delta R.T.: -0.001 min
 Response: 333256038
 Conc: 49.04 ng/ml



#17 4,4'-DDT

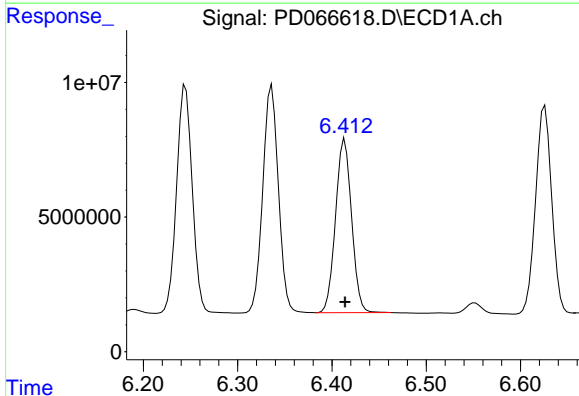
R.T.: 6.336 min
Delta R.T.: 0.000 min
Response: 97354152
Conc: 50.61 ng/ml

Instrument :
ECD_D
ClientSampleId :



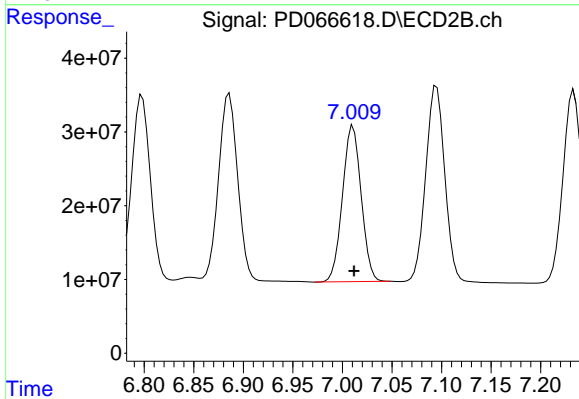
#17 4,4'-DDT

R.T.: 7.095 min
Delta R.T.: -0.001 min
Response: 354336286
Conc: 48.85 ng/ml



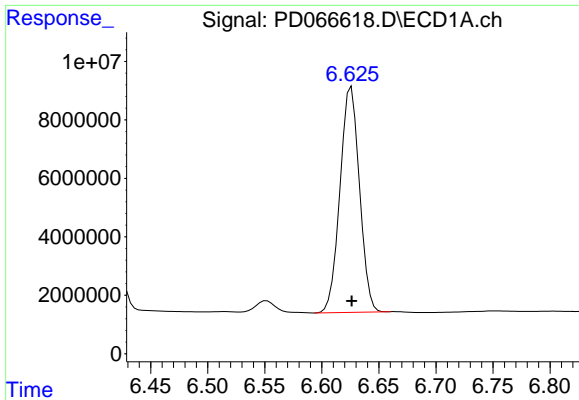
#18 Endrin aldehyde

R.T.: 6.414 min
Delta R.T.: 0.000 min
Response: 76313535
Conc: 49.37 ng/ml



#18 Endrin aldehyde

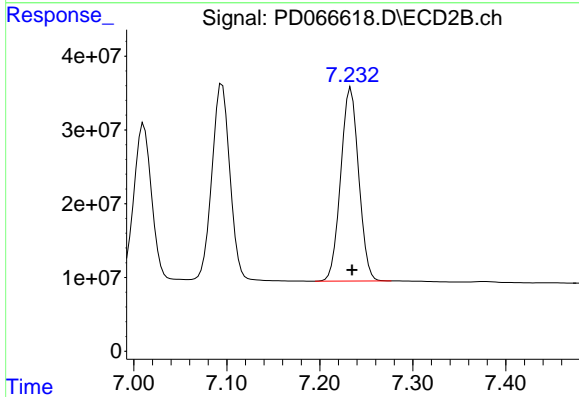
R.T.: 7.011 min
Delta R.T.: -0.001 min
Response: 277921170
Conc: 48.86 ng/ml



#19 Endosulfan Sulfate

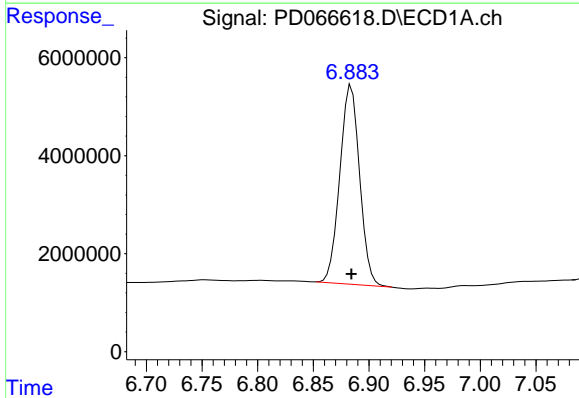
R.T.: 6.626 min
 Delta R.T.: 0.000 min
 Response: 91655148
 Conc: 49.25 ng/ml

Instrument :
 ECD_D
 ClientSampleId :



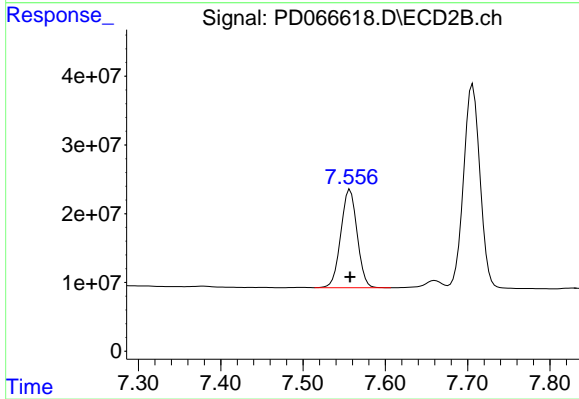
#19 Endosulfan Sulfate

R.T.: 7.233 min
 Delta R.T.: -0.001 min
 Response: 351787369
 Conc: 48.49 ng/ml



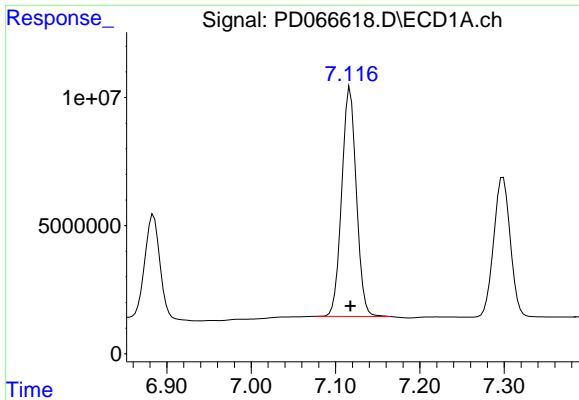
#20 Methoxychlor

R.T.: 6.884 min
 Delta R.T.: 0.000 min
 Response: 50129668
 Conc: 48.54 ng/ml



#20 Methoxychlor

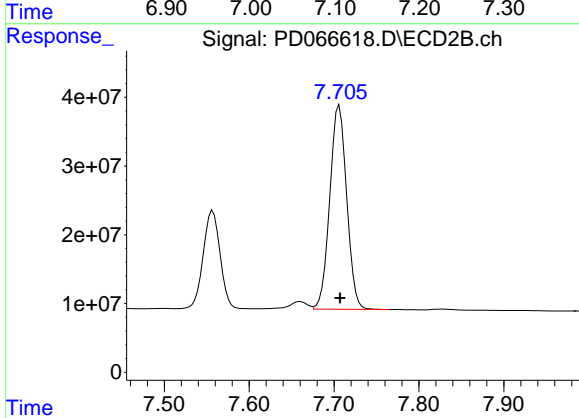
R.T.: 7.557 min
 Delta R.T.: 0.000 min
 Response: 197657902
 Conc: 48.52 ng/ml



#21 Endrin ketone

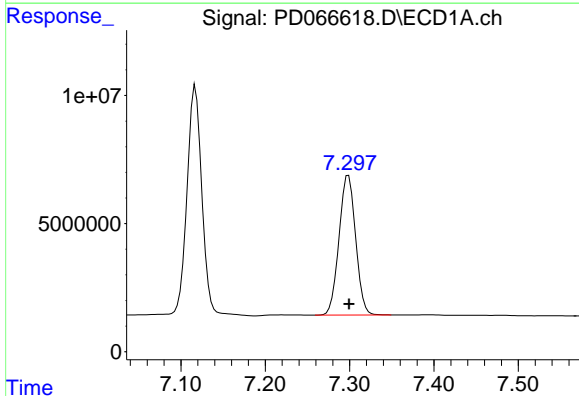
R.T.: 7.117 min
 Delta R.T.: 0.000 min
 Response: 107816795
 Conc: 49.41 ng/ml

Instrument :
 ECD_D
 ClientSampleId :



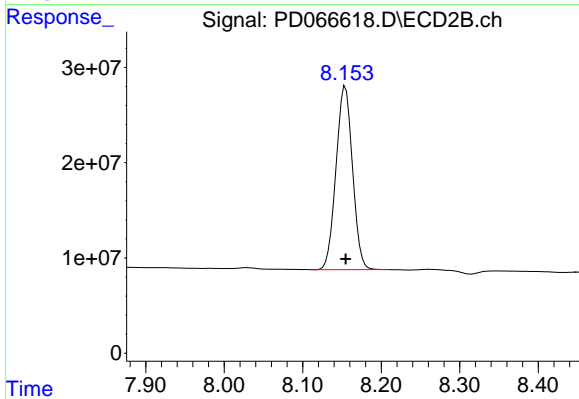
#21 Endrin ketone

R.T.: 7.706 min
 Delta R.T.: 0.000 min
 Response: 410543505
 Conc: 48.82 ng/ml



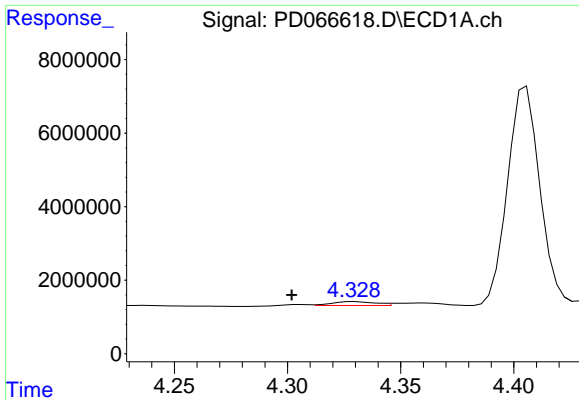
#22 Mirex

R.T.: 7.299 min
 Delta R.T.: 0.000 min
 Response: 74560439
 Conc: 47.93 ng/ml



#22 Mirex

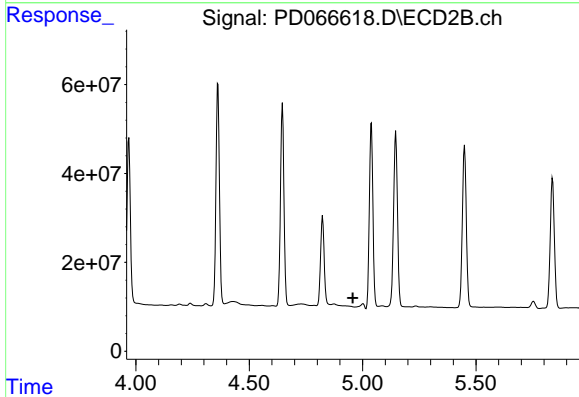
R.T.: 8.154 min
 Delta R.T.: 0.000 min
 Response: 281815503
 Conc: 47.65 ng/ml



#23 Chlordane-1

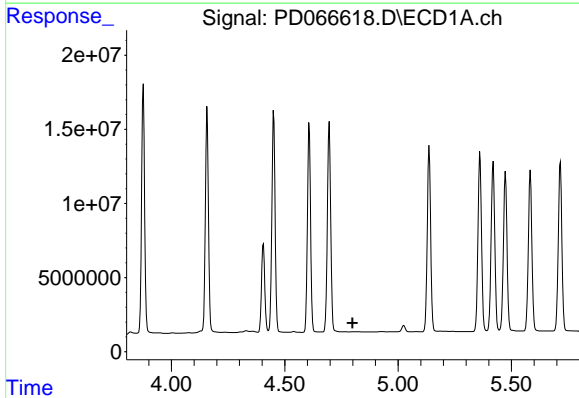
R.T.: 4.330 min
 Delta R.T.: 0.028 min
 Response: 1378258
 Conc: 18.63 ng/ml

Instrument :
 ECD_D
 ClientSampleId :



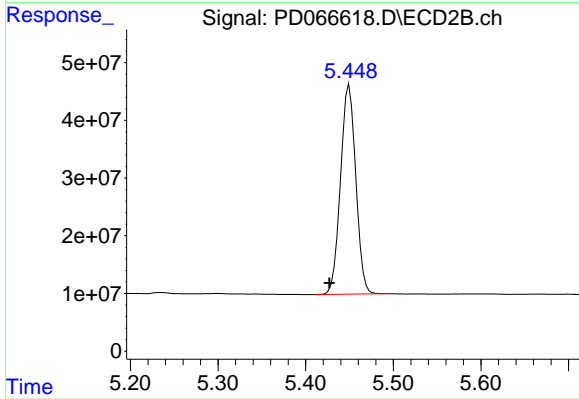
#23 Chlordane-1

R.T.: 0.000 min
 Exp R.T. : 4.958 min
 Response: 0
 Conc: N.D.



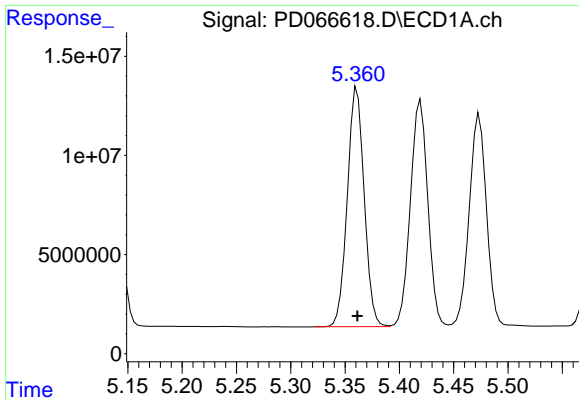
#24 Chlordane-2

R.T.: 0.000 min
 Exp R.T. : 4.799 min
 Response: 0
 Conc: N.D.



#24 Chlordane-2

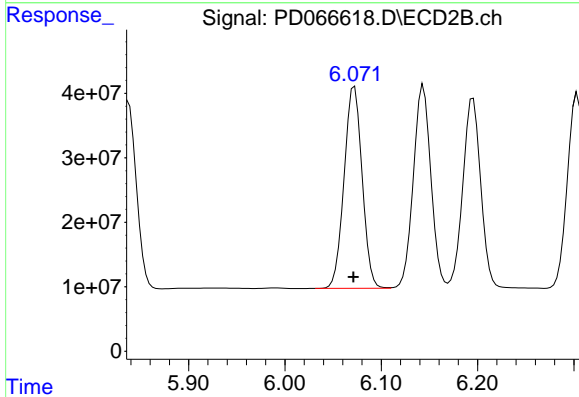
R.T.: 5.450 min
 Delta R.T.: 0.022 min
 Response: 439817204
 Conc: 1482.77 ng/ml



#25 Chlordane-3

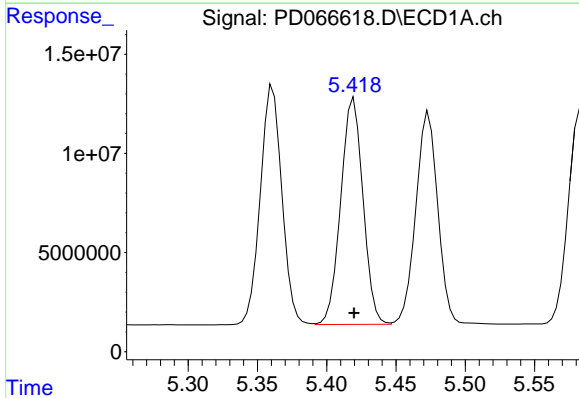
R.T.: 5.361 min
 Delta R.T.: 0.000 min
 Response: 130427148
 Conc: 532.69 ng/ml

Instrument :
 ECD_D
 ClientSampleId :



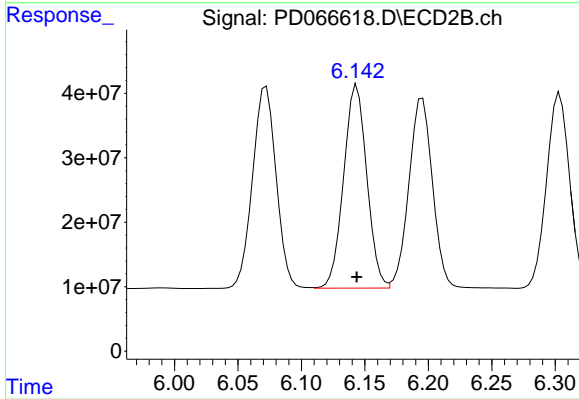
#25 Chlordane-3

R.T.: 6.072 min
 Delta R.T.: 0.000 min
 Response: 405159355
 Conc: 375.78 ng/ml



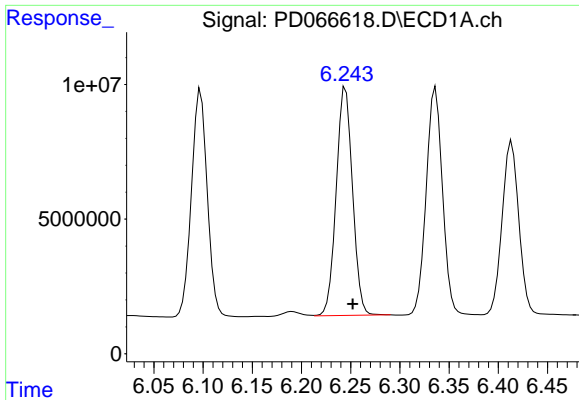
#26 Chlordane-4

R.T.: 5.420 min
 Delta R.T.: 0.000 min
 Response: 127725172
 Conc: 627.03 ng/ml



#26 Chlordane-4

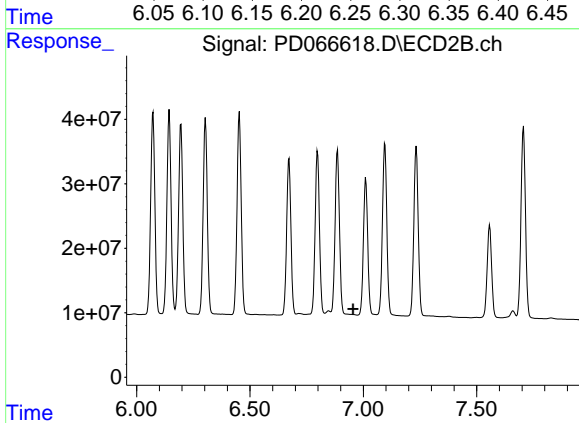
R.T.: 6.144 min
 Delta R.T.: 0.000 min
 Response: 400373124
 Conc: 317.70 ng/ml



#27 Chlordane-5

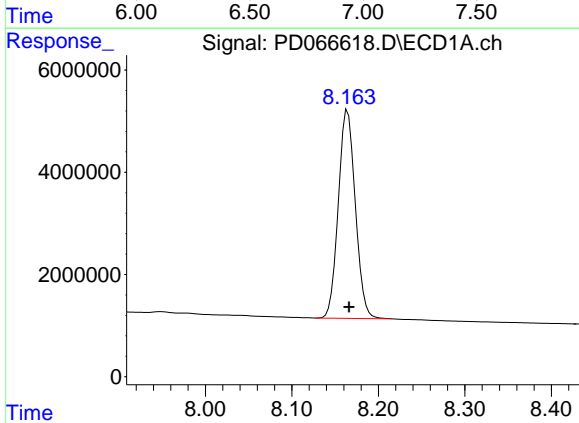
R.T.: 6.245 min
 Delta R.T.: -0.008 min
 Response: 97753529
 Conc: 1155.87 ng/m

Instrument :
 ECD_D
 ClientSampleId :



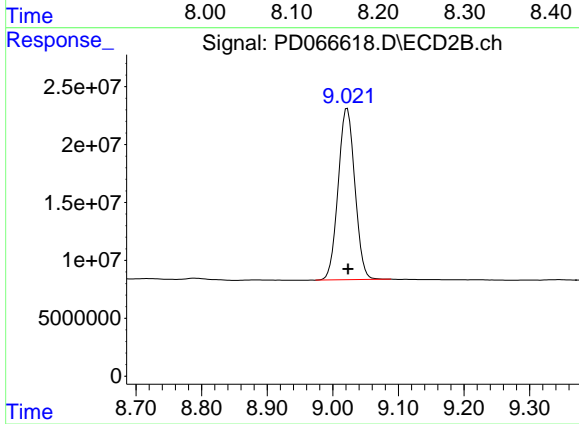
#27 Chlordane-5

R.T.: 0.000 min
 Exp R.T. : 6.955 min
 Response: 0
 Conc: N.D.



#28 Decachlorobiphenyl

R.T.: 8.164 min
 Delta R.T.: -0.002 min
 Response: 55314132
 Conc: 47.87 ng/ml



#28 Decachlorobiphenyl

R.T.: 9.022 min
 Delta R.T.: 0.000 min
 Response: 261963440
 Conc: 48.63 ng/ml