

Data Path : Z:\pestpcbsrv\HPCHEM1\ECD_D\Data\PD102921\
 Data File : PD066612.D
 Signal(s) : Signal #1: ECD1A.ch Signal #2: ECD2B.ch
 Acq On : 28 Oct 2021 16:45
 Operator : AJ\MA
 Sample : PB140314BS
 Misc :
 ALS Vial : 18 Sample Multiplier: 1

Instrument :
 ECD_D
 ClientSampleId :
 PB140314BS

Integration File signal 1: autoint1.e
 Integration File signal 2: autoint2.e
 Quant Time: Oct 29 01:55:07 2021
 Quant Method : Z:\pestpcbsrv\HPCHEM1\ECD_D\Method\DTX102821.M
 Quant Title : GC Extractables
 QLast Update : Thu Oct 28 03:24:11 2021
 Response via : Initial Calibration
 Integrator: ChemStation

Volume Inj. : 1 µl
 Signal #1 Phase : ZB-MR2 Signal #2 Phase: ZB-MR1
 Signal #1 Info : 30M x 0.32mm x0.2 Signal #2 Info : 30M x 0.32mm x 0.50µm

Compound	RT#1	RT#2	Resp#1	Resp#2	ng/ml	ng/ml

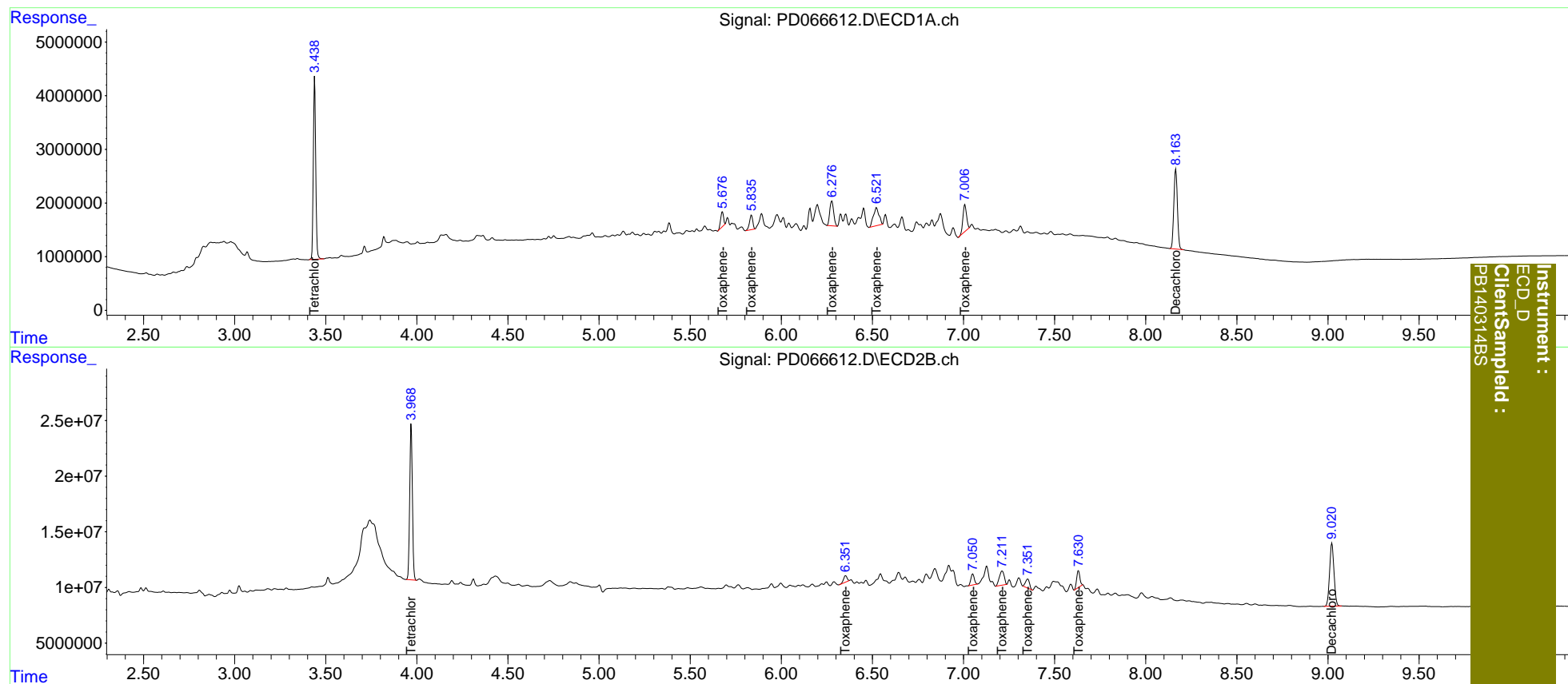
System Monitoring Compounds						
1) SA Tetrachlo...	3.439	3.969	31161249	142.6E6	17.217	18.216
7) SA Decachlor...	8.165	9.022	20319205	95341834	18.052	18.204
Target Compounds						
2) Toxaphene-1	5.677	6.354	3014737	7647901	183.678	171.070
3) Toxaphene-2	5.836	7.051	3387200	12820488	183.542	184.184
4) Toxaphene-3	6.278	7.212	6902683	23573764	180.757	183.137
5) Toxaphene-4	6.523	7.353	7129365	12504145	182.566	169.541
6) Toxaphene-5	7.008	7.631	6783719	18952844	173.172	182.887

(f)=RT Delta > 1/2 Window (#)=Amounts differ by > 25% (m)=manual int.

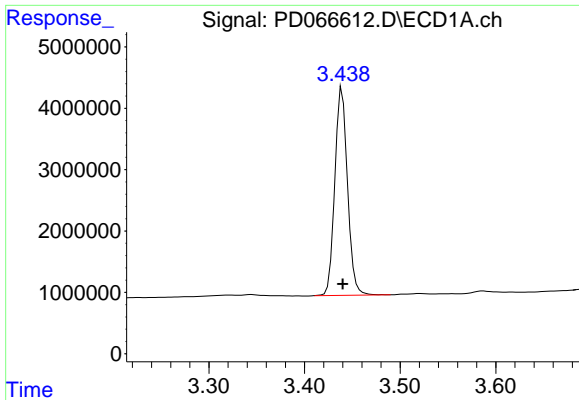
Data Path : Z:\pestpcbsrv\HPCHEM1\ECD_D\Data\PD102921\
Data File : PD066612.D
Signal(s) : Signal #1: ECD1A.ch Signal #2: ECD2B.ch
Acq On : 28 Oct 2021 16:45
Operator : AJ\MA
Sample : PB140314BS
Misc :
ALS Vial : 18 Sample Multiplier: 1

Integration File signal 1: autoint1.e
Integration File signal 2: autoint2.e
Quant Time: Oct 29 01:55:07 2021
Quant Method : Z:\pestpcbsrv\HPCHEM1\ECD_D\Method\DTX102821.M
Quant Title : GC Extractables
QLast Update : Thu Oct 28 03:24:11 2021
Response via : Initial Calibration
Integrator: ChemStation

Volume Inj. : 1 µl
Signal #1 Phase : ZB-MR2 Signal #2 Phase: ZB-MR1
Signal #1 Info : 30M x 0.32mm x 0.2 Signal #2 Info : 30M x 0.32mm x 0.50µm

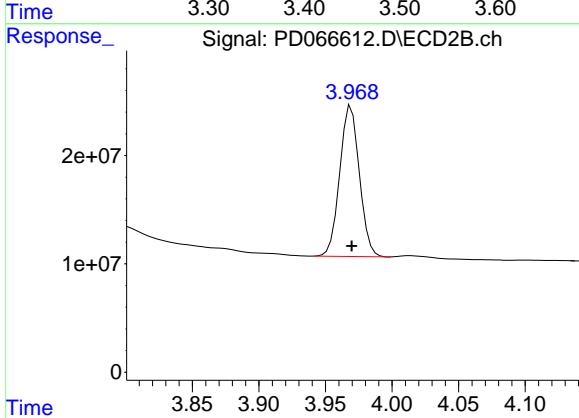


Instrument :
ECD_D
ClientSampleId :
PB140314BS

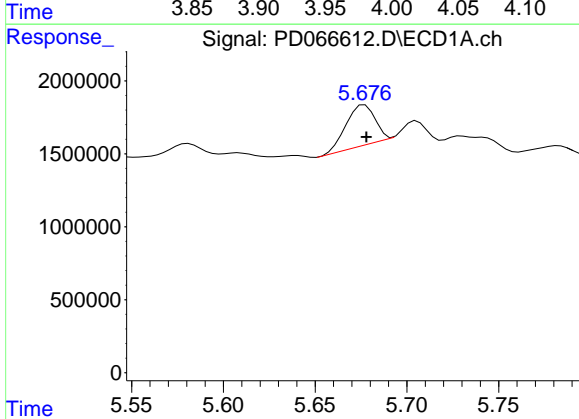


#1 Tetrachloro-m-xylene
 R.T.: 3.439 min
 Delta R.T.: 0.000 min
 Response: 31161249
 Conc: 17.22 ng/ml

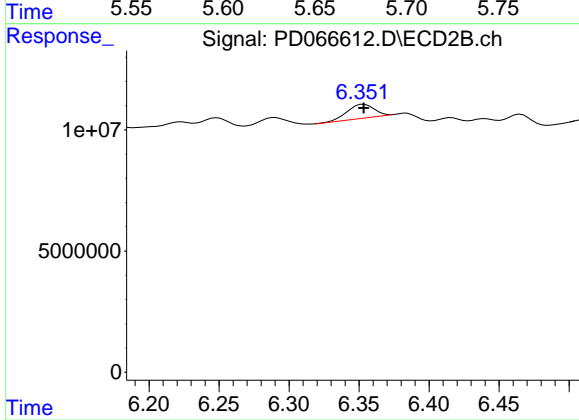
Instrument :
 ECD_D
 ClientSampleId :
 PB140314BS



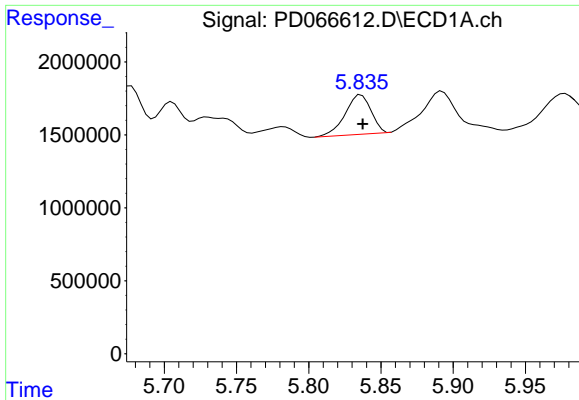
#1 Tetrachloro-m-xylene
 R.T.: 3.969 min
 Delta R.T.: 0.000 min
 Response: 142562038
 Conc: 18.22 ng/ml



#2 Toxaphene-1
 R.T.: 5.677 min
 Delta R.T.: 0.000 min
 Response: 3014737
 Conc: 183.68 ng/ml



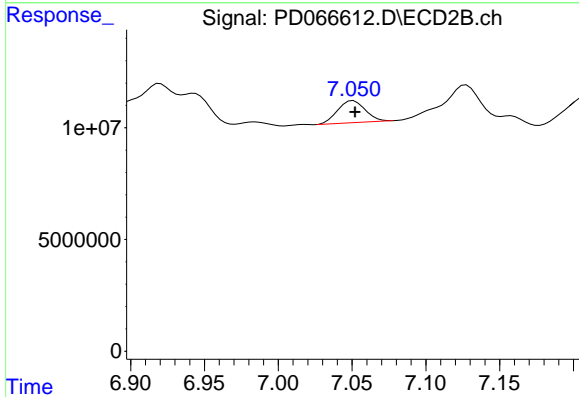
#2 Toxaphene-1
 R.T.: 6.354 min
 Delta R.T.: 0.000 min
 Response: 7647901
 Conc: 171.07 ng/ml



#3 Toxaphene-2

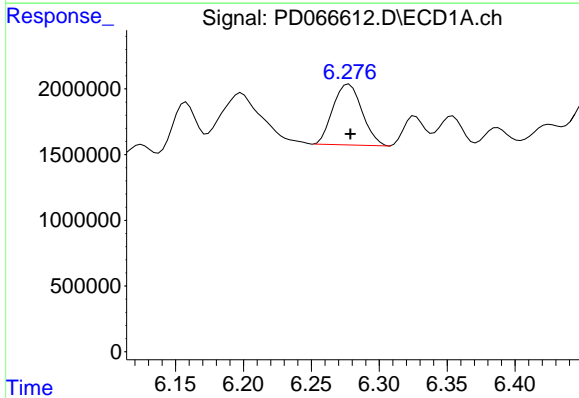
R.T.: 5.836 min
 Delta R.T.: -0.001 min
 Response: 3387200
 Conc: 183.54 ng/ml

Instrument :
 ECD_D
 ClientSampleId :
 PB140314BS



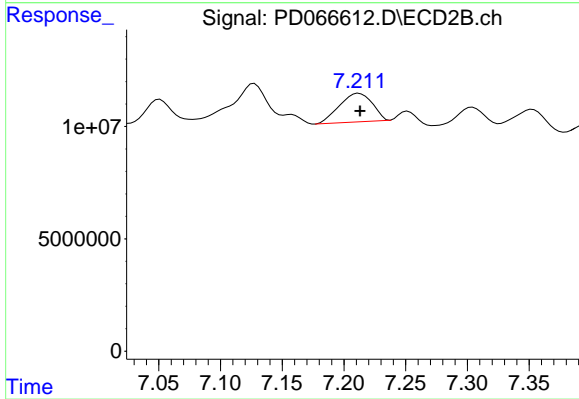
#3 Toxaphene-2

R.T.: 7.051 min
 Delta R.T.: -0.001 min
 Response: 12820488
 Conc: 184.18 ng/ml



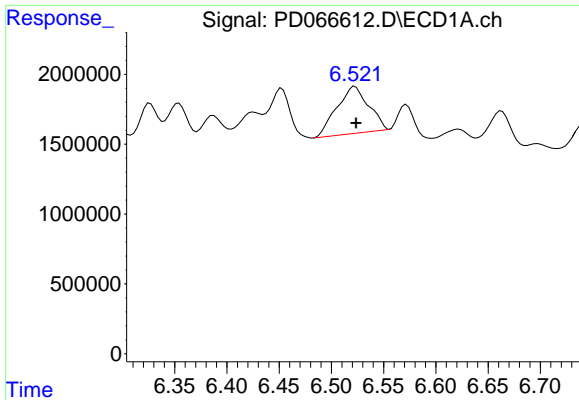
#4 Toxaphene-3

R.T.: 6.278 min
 Delta R.T.: -0.001 min
 Response: 6902683
 Conc: 180.76 ng/ml



#4 Toxaphene-3

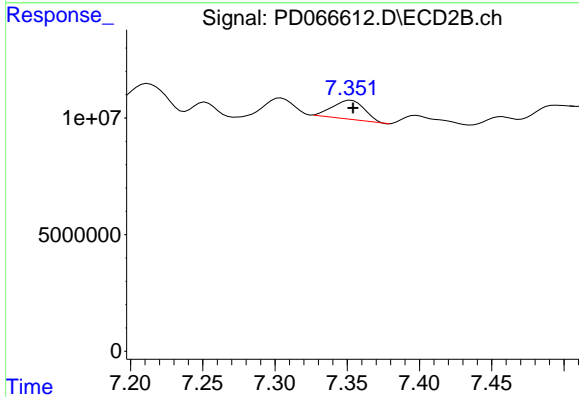
R.T.: 7.212 min
 Delta R.T.: -0.001 min
 Response: 23573764
 Conc: 183.14 ng/ml



#5 Toxaphene-4

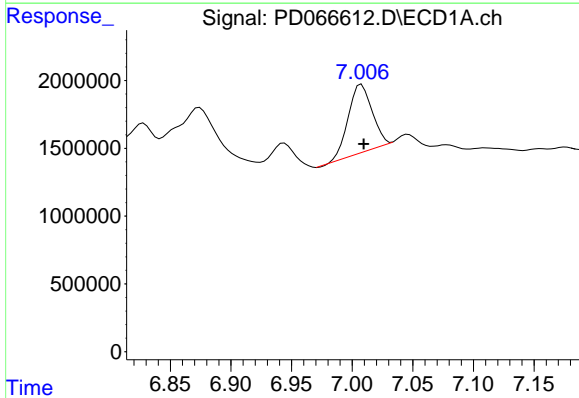
R.T.: 6.523 min
 Delta R.T.: 0.000 min
 Response: 7129365
 Conc: 182.57 ng/ml

Instrument :
 ECD_D
 ClientSampleId :
 PB140314BS



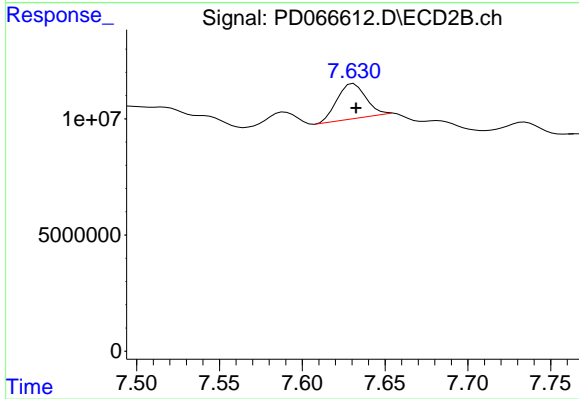
#5 Toxaphene-4

R.T.: 7.353 min
 Delta R.T.: -0.001 min
 Response: 12504145
 Conc: 169.54 ng/ml



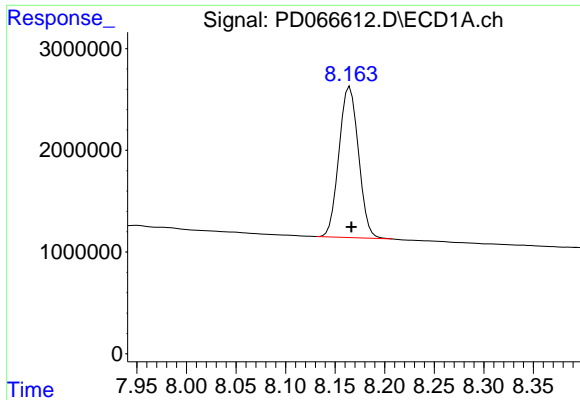
#6 Toxaphene-5

R.T.: 7.008 min
 Delta R.T.: -0.002 min
 Response: 6783719
 Conc: 173.17 ng/ml



#6 Toxaphene-5

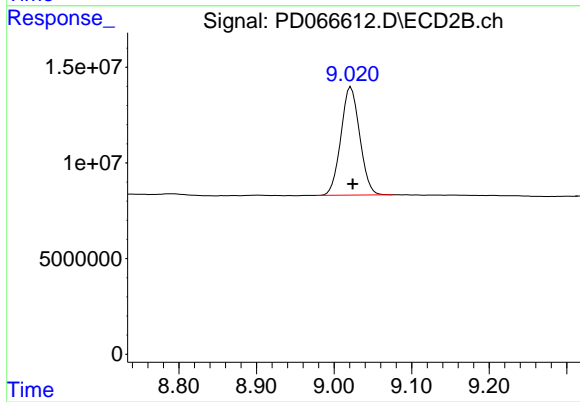
R.T.: 7.631 min
 Delta R.T.: -0.001 min
 Response: 18952844
 Conc: 182.89 ng/ml



#7 Decachlorobiphenyl

R.T.: 8.165 min
Delta R.T.: -0.002 min
Response: 20319205
Conc: 18.05 ng/ml

Instrument :
ECD_D
ClientSampleId :
PB140314BS



#7 Decachlorobiphenyl

R.T.: 9.022 min
Delta R.T.: -0.002 min
Response: 95341834
Conc: 18.20 ng/ml