

Data Path : Z:\pestpcbsrv\HPCHEM1\ECD\_D\Data\PD103018\  
 Data File : PD050103.D  
 Signal(s) : Signal #1: ECD1A.CH Signal #2: ECD2B.CH  
 Acq On : 29 Oct 2018 14:19  
 Operator : AJ\SJ  
 Sample : I.BLK  
 Misc :  
 ALS Vial : 2 Sample Multiplier: 1

Instrument :  
 ECD\_D  
 ClientSampleId :  
 I.BLK

Integration File signal 1: autoint1.e  
 Integration File signal 2: autoint2.e  
 Quant Time: Oct 30 03:52:27 2018  
 Quant Method : Z:\pestpcbsrv\HPCHEM1\ECD\_D\Method\PD103018.M  
 Quant Title : GC Extractables  
 QLast Update : Tue Oct 30 03:08:01 2018  
 Response via : Initial Calibration  
 Integrator: ChemStation 6890 Scale Mode: Large solvent peaks clipped

Volume Inj. : 2 µl  
 Signal #1 Phase : ZB-MR2 Signal #2 Phase: ZB-MR1  
 Signal #1 Info : 30M x 0.32mm x0.2 Signal #2 Info : 30M x 0.32mm x 0.50µm

Compound	RT#1	RT#2	Resp#1	Resp#2	ng/ml	ng/ml
-----						
System Monitoring Compounds						
1) SA Tetrachlo...	4.232	4.061	13549491	633.2E6	21.613	22.737
28) SA Decachlor...	9.017	9.172	12994581	386.6E6	21.617	22.492

Target Compounds

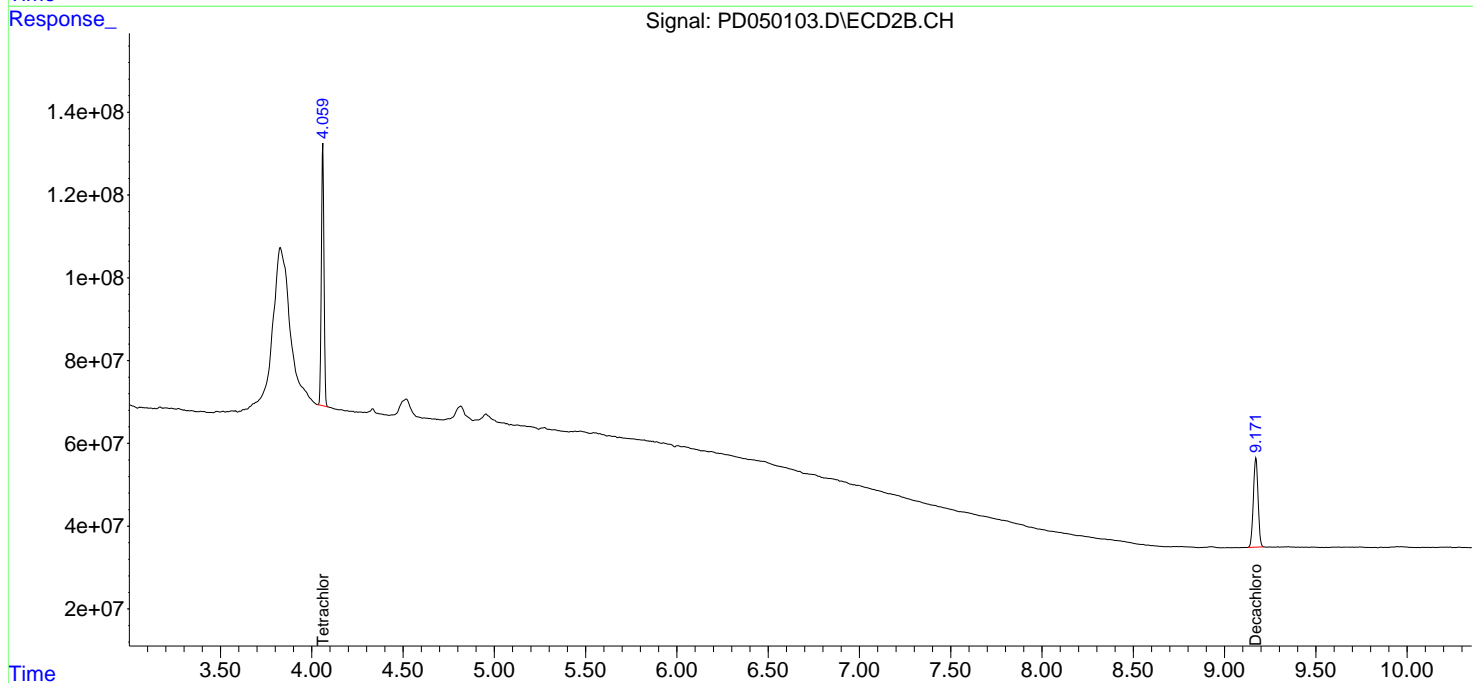
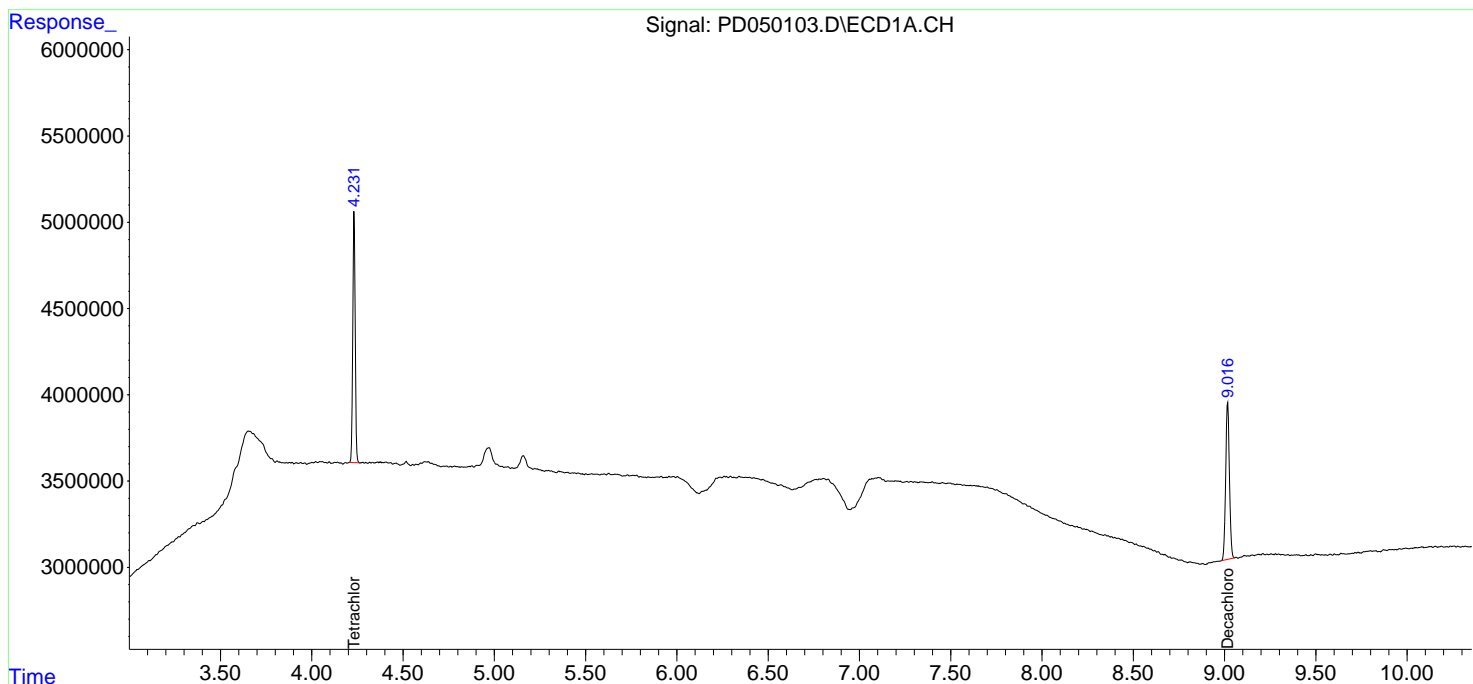
(f)=RT Delta > 1/2 Window (#)=Amounts differ by > 25% (m)=manual int.

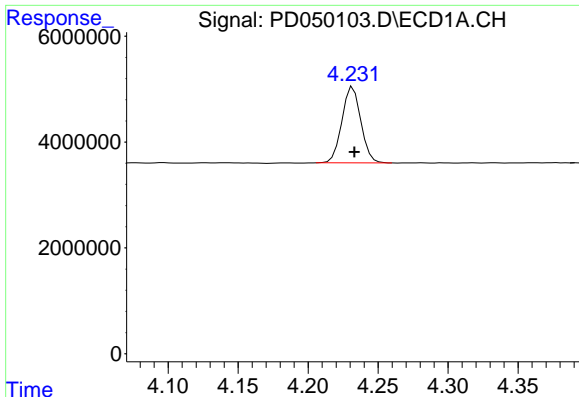
Data Path : Z:\pestpcbsrv\HPCHEM1\ECD\_D\Data\PD103018\  
 Data File : PD050103.D  
 Signal(s) : Signal #1: ECD1A.CH Signal #2: ECD2B.CH  
 Acq On : 29 Oct 2018 14:19  
 Operator : AJ\SJ  
 Sample : I.BLK  
 Misc :  
 ALS Vial : 2 Sample Multiplier: 1

Instrument :  
 ECD\_D  
 ClientSampled :  
 I.BLK

Integration File signal 1: autoint1.e  
 Integration File signal 2: autoint2.e  
 Quant Time: Oct 30 03:52:27 2018  
 Quant Method : Z:\pestpcbsrv\HPCHEM1\ECD\_D\Method\PD103018.M  
 Quant Title : GC Extractables  
 QLast Update : Tue Oct 30 03:08:01 2018  
 Response via : Initial Calibration  
 Integrator: ChemStation 6890 Scale Mode: Large solvent peaks clipped

Volume Inj. : 2 µl  
 Signal #1 Phase : ZB-MR2 Signal #2 Phase: ZB-MR1  
 Signal #1 Info : 30M x 0.32mm x0.2 Signal #2 Info : 30M x 0.32mm x 0.50µm

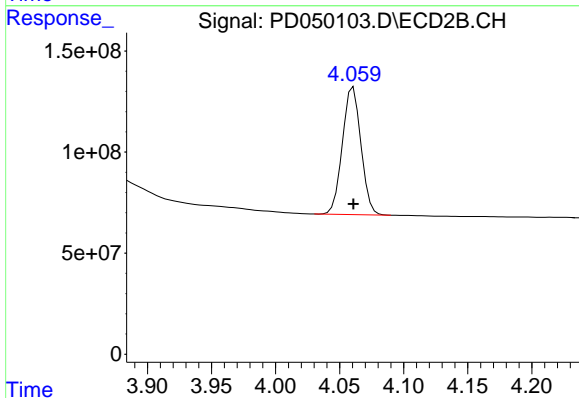




#1 Tetrachloro-m-xylene

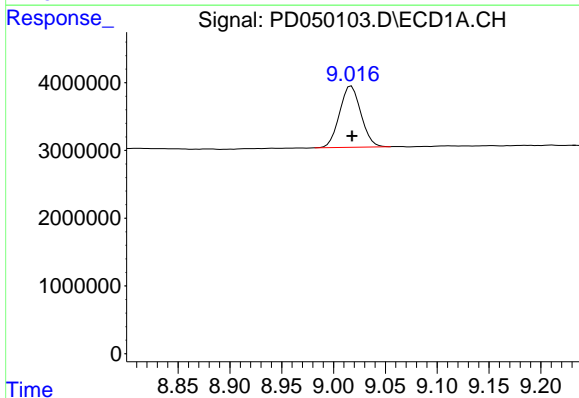
R.T.: 4.232 min  
 Delta R.T.: 0.000 min  
 Response: 13549491  
 Conc: 21.61 ng/ml

Instrument :  
 ECD\_D  
 ClientSampled :  
 I.BLK



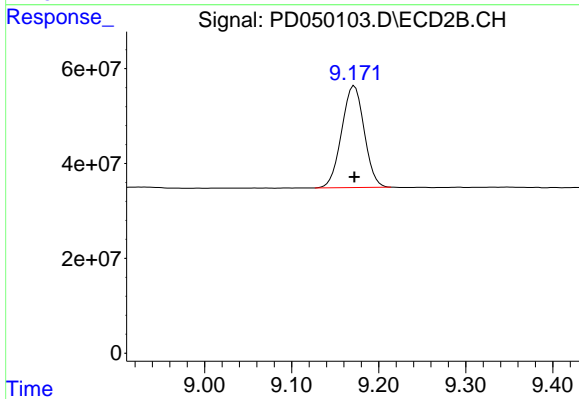
#1 Tetrachloro-m-xylene

R.T.: 4.061 min  
 Delta R.T.: 0.000 min  
 Response: 633212787  
 Conc: 22.74 ng/ml



#28 Decachlorobiphenyl

R.T.: 9.017 min  
 Delta R.T.: 0.000 min  
 Response: 12994581  
 Conc: 21.62 ng/ml



#28 Decachlorobiphenyl

R.T.: 9.172 min  
 Delta R.T.: 0.000 min  
 Response: 386614308  
 Conc: 22.49 ng/ml