

Data Path : Z:\pestpcbsrv\HPCHEM1\ECD_D\Data\PD103018\
 Data File : PD050110.D
 Signal(s) : Signal #1: ECD1A.CH Signal #2: ECD2B.CH
 Acq On : 29 Oct 2018 15:57
 Operator : AJ\SJ
 Sample : PSTDICC005
 Misc :
 ALS Vial : 9 Sample Multiplier: 1

Instrument :
 ECD_D
ClientSampled :
 PSTDICC005

Manual Integrations
APPROVED
 Sohil
 10/30/2018 10:41:15 AM

Integration File signal 1: autoint1.e
 Integration File signal 2: autoint2.e
 Quant Time: Oct 30 02:58:04 2018
 Quant Method : Z:\pestpcbsrv\HPCHEM1\ECD_D\Method\PD103018.M
 Quant Title : GC Extractables
 QLast Update : Tue Oct 30 02:45:49 2018
 Response via : Initial Calibration
 Integrator: ChemStation 6890 Scale Mode: Large solvent peaks clipped

Volume Inj. : 2 µl
 Signal #1 Phase : ZB-MR2 Signal #2 Phase: ZB-MR1
 Signal #1 Info : 30M x 0.32mm x0.2 Signal #2 Info : 30M x 0.32mm x 0.50µm

Compound	RT#1	RT#2	Resp#1	Resp#2	ng/ml	ng/ml

System Monitoring Compounds						
1) SA Tetrachlo...	4.232	4.061	3238156	154.0E6	5.165	5.528
2) SA Decachlor...	9.018	9.172	3386893	100.9E6	5.634	5.869
Target Compounds						
2) A alpha-BHC	4.686	4.454	4829373	249.6E6	5.080	5.697
3) MA gamma-BHC...	4.978	4.741	5046110	221.8E6	5.555	5.676
4) MA Heptachlor	5.292	5.255	4341582	215.4E6	5.050	5.754
5) MB Aldrin	5.549	5.563	4252412	209.5E6	5.112m	5.874
6) B beta-BHC	5.217	4.909	2107097	86134425	5.564	5.388
7) B delta-BHC	5.437	5.129	4406174	215.4E6	5.054	5.626
8) B Heptachlo...	5.991	5.950	4085899	184.4E6	5.167	5.809
9) A Endosulfan I	6.335	6.309	3855064	161.0E6	5.162m	5.693
10) B gamma-Chl...	6.214	6.184	4203517	186.7E6	5.092m	5.759
11) B alpha-Chl...	6.273	6.258	4309743	180.2E6	5.281m	5.816
12) B 4,4'-DDE	6.418	6.412	3911065	168.7E6	5.113	5.661
13) MA Dieldrin	6.578	6.566	4098194	174.8E6	5.073	5.770
14) MA Endrin	6.838	6.785	3834235	132.0E6	5.460	5.575
15) B Endosulfa...	7.101	6.993	3981478	135.3E6	5.433	5.597
16) A 4,4'-DDD	6.927	6.903	2962052	130.0E6	4.781m	5.675
17) MA 4,4'-DDT	7.169	7.203	2790943	85528860	4.548	4.621
18) B Endrin al...	7.265	7.117	2904296	110.4E6	5.211	5.714
19) B Endosulfa...	7.471	7.341	3397822	125.7E6	5.196	5.758
20) A Methoxychlor	7.694	7.660	1553603	44595219	4.951	4.972
21) B Endrin ke...	7.967	7.815	3811002	111.7E6	5.139	5.538

(f)=RT Delta > 1/2 Window (#)=Amounts differ by > 25% (m)=manual int.

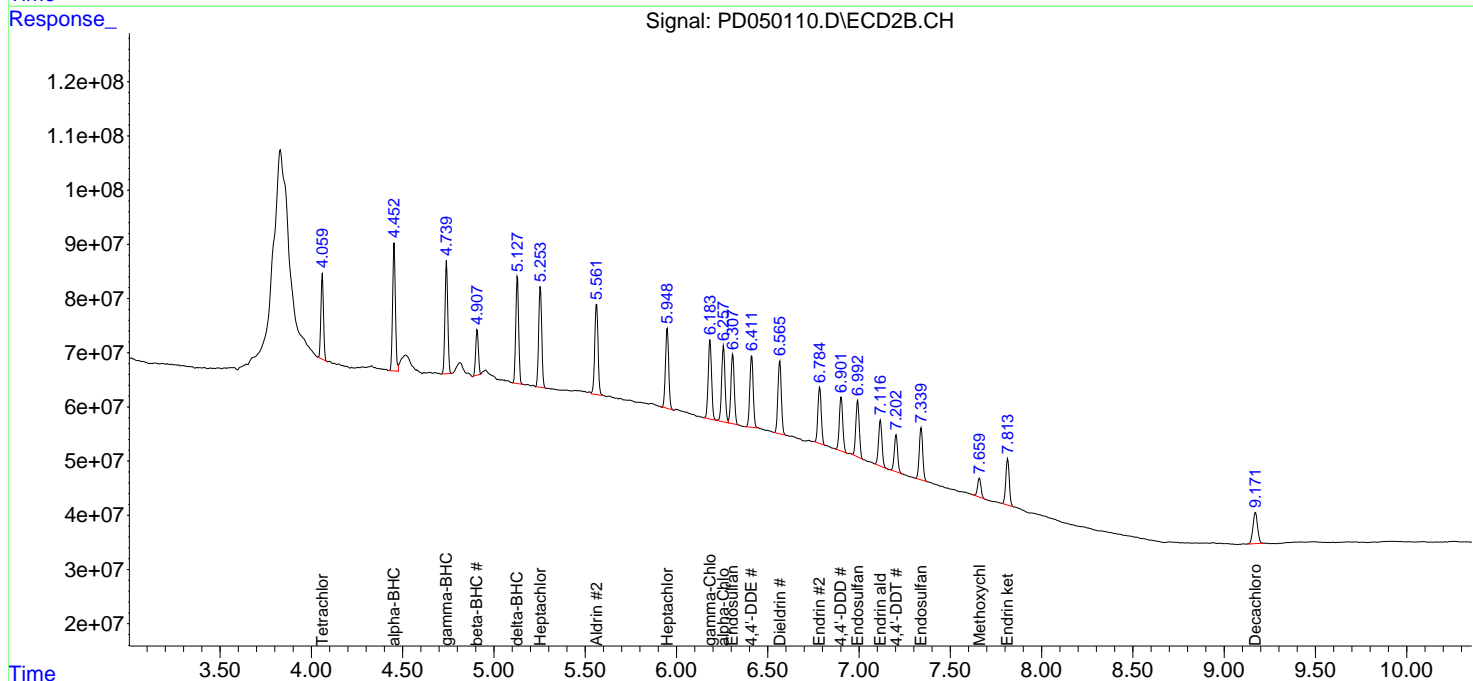
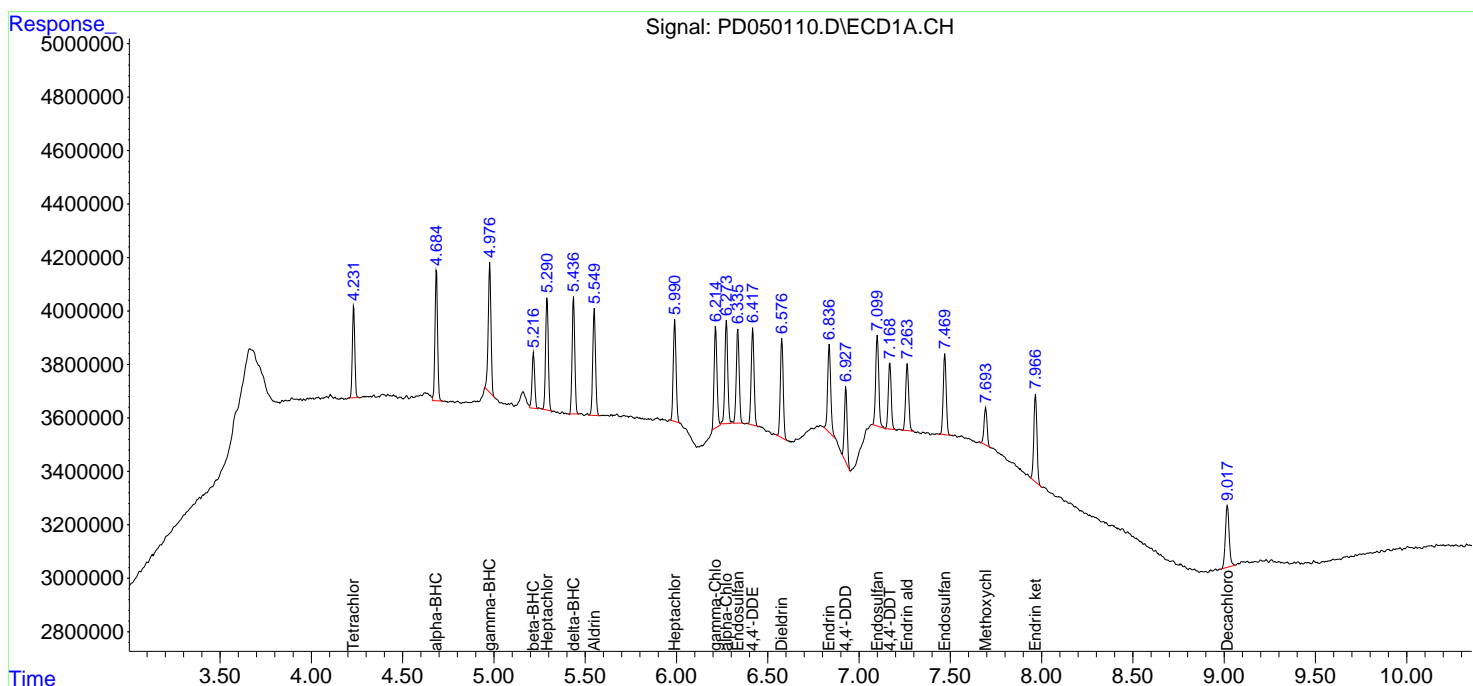
Data Path : Z:\pestpcbsrv\HPCHEM1\ECD_D\Data\PD103018\
 Data File : PD050110.D
 Signal(s) : Signal #1: ECD1A.CH Signal #2: ECD2B.CH
 Acq On : 29 Oct 2018 15:57
 Operator : AJ\SJ
 Sample : PSTDICC005
 Misc :
 ALS Vial : 9 Sample Multiplier: 1

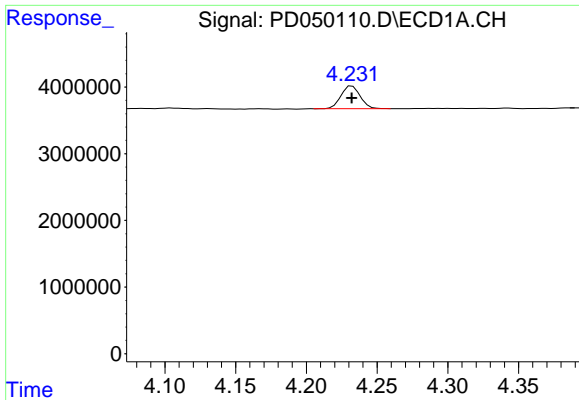
Instrument :
 ECD_D
 Client Sampled :
 PSTDICC005

Manual Integrations
APPROVED
 Sohil
 10/30/2018 10:41:15 AM

Integration File signal 1: autoint1.e
 Integration File signal 2: autoint2.e
 Quant Time: Oct 30 02:58:04 2018
 Quant Method : Z:\pestpcbsrv\HPCHEM1\ECD_D\Method\PD103018.M
 Quant Title : GC Extractables
 QLast Update : Tue Oct 30 02:45:49 2018
 Response via : Initial Calibration
 Integrator: ChemStation 6890 Scale Mode: Large solvent peaks clipped

Volume Inj. : 2 µl
 Signal #1 Phase : ZB-MR2 Signal #2 Phase: ZB-MR1
 Signal #1 Info : 30M x 0.32mm x0.2 Signal #2 Info : 30M x 0.32mm x 0.50µm

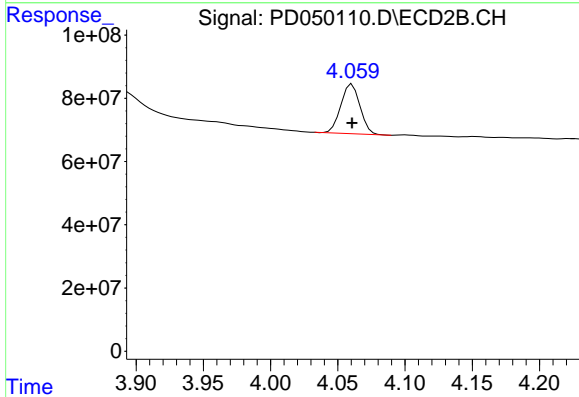




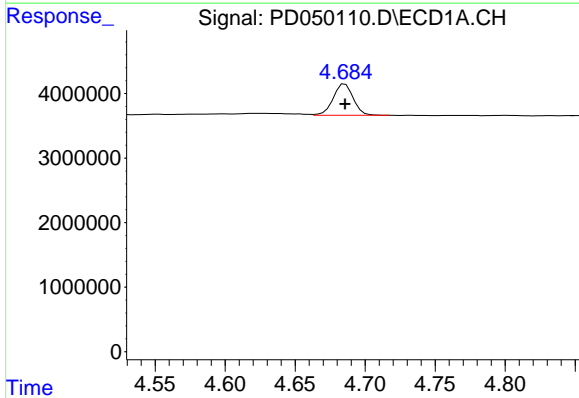
#1 Tetrachloro-m-xylene
 R.T.: 4.232 min
 Delta R.T.: 0.000 min
 Response: 3238156
 Conc: 5.17 ng/ml

Instrument :
 ECD_D
 ClientSampleId :
 PSTDICC005

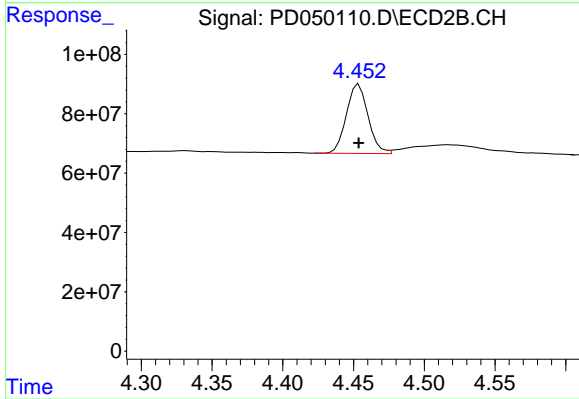
Manual Integrations
 APPROVED
 Sohil
 10/30/2018 10:41:15 AM



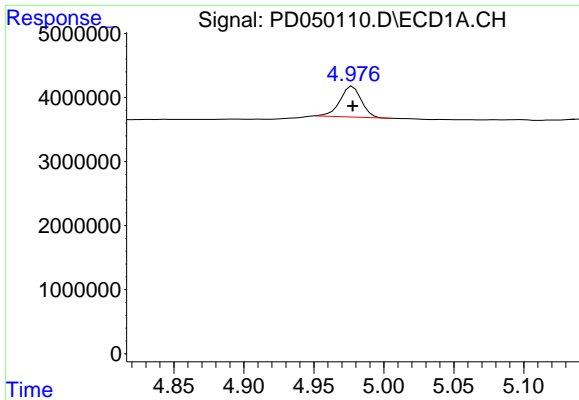
#1 Tetrachloro-m-xylene
 R.T.: 4.061 min
 Delta R.T.: 0.000 min
 Response: 153965225
 Conc: 5.53 ng/ml



#2 alpha-BHC
 R.T.: 4.686 min
 Delta R.T.: 0.000 min
 Response: 4829373
 Conc: 5.08 ng/ml



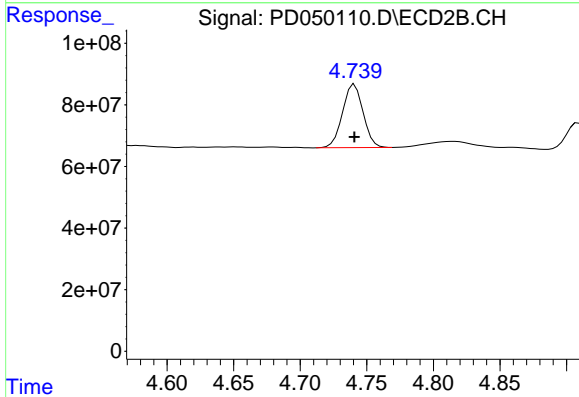
#2 alpha-BHC
 R.T.: 4.454 min
 Delta R.T.: 0.000 min
 Response: 249631140
 Conc: 5.70 ng/ml



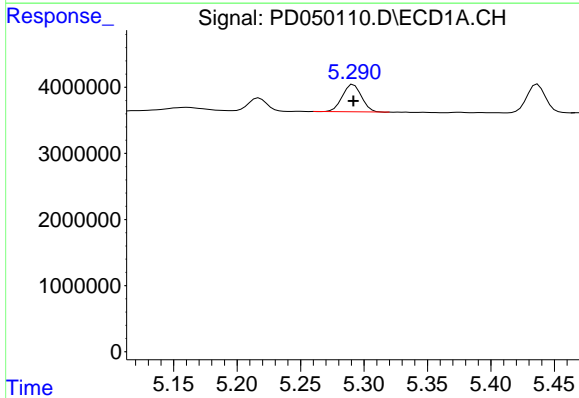
#3 gamma-BHC (Lindane)
 R.T.: 4.978 min
 Delta R.T.: 0.000 min
 Response: 5046110
 Conc: 5.56 ng/ml

Instrument :
 ECD_D
 ClientSampled :
 PSTDICC005

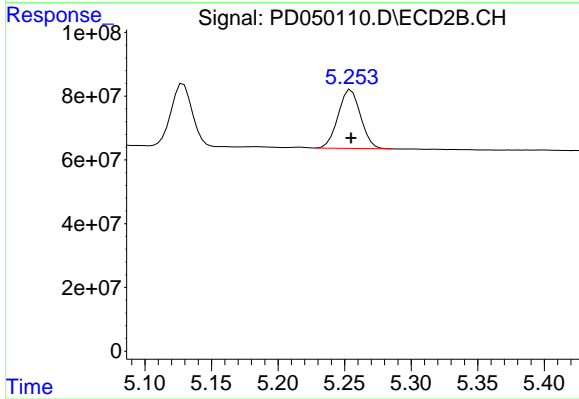
Manual Integrations
 APPROVED
 Sohil
 10/30/2018 10:41:15 AM



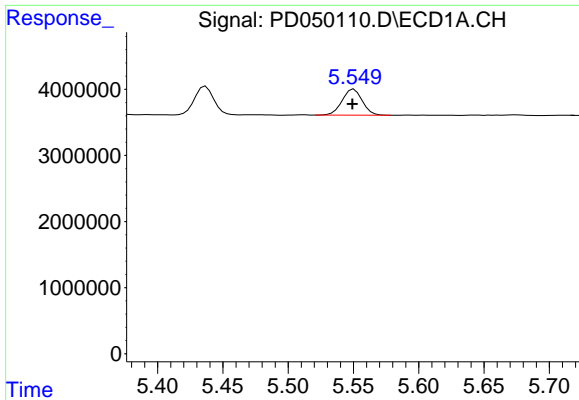
#3 gamma-BHC (Lindane)
 R.T.: 4.741 min
 Delta R.T.: 0.000 min
 Response: 221785910
 Conc: 5.68 ng/ml



#4 Heptachlor
 R.T.: 5.292 min
 Delta R.T.: 0.000 min
 Response: 4341582
 Conc: 5.05 ng/ml



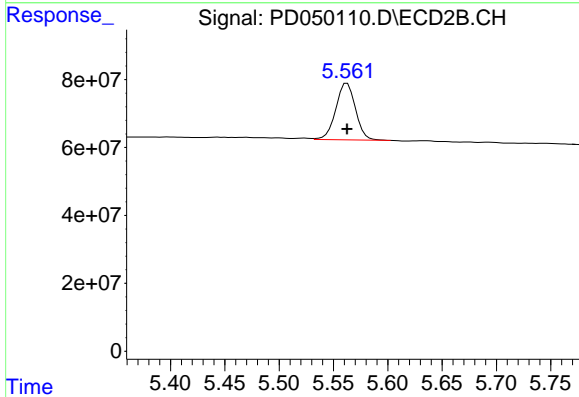
#4 Heptachlor
 R.T.: 5.255 min
 Delta R.T.: 0.000 min
 Response: 215404119
 Conc: 5.75 ng/ml



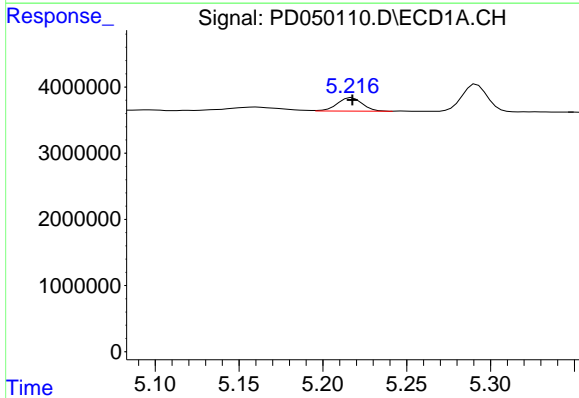
#5 Aldrin
 R.T.: 5.549 min
 Delta R.T.: 0.000 min
 Response: 4252412
 Conc: 5.11 ng/ml m

Instrument :
 ECD_D
ClientSampled :
 PSTDICC005

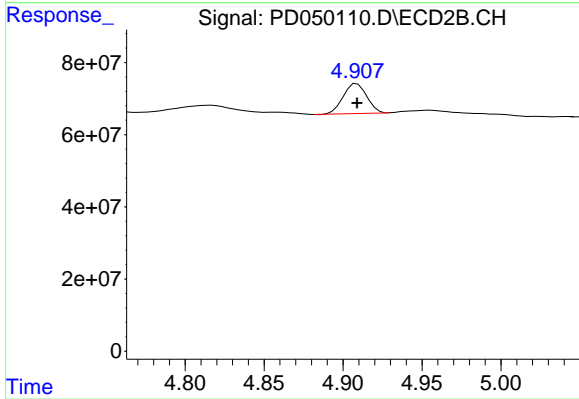
Manual Integrations
APPROVED
 Sohil
 10/30/2018 10:41:15 AM



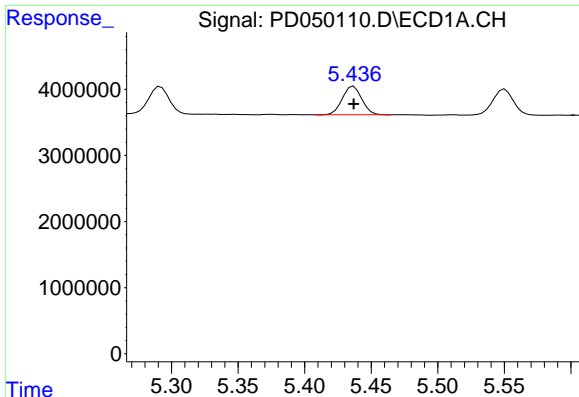
#5 Aldrin
 R.T.: 5.563 min
 Delta R.T.: 0.000 min
 Response: 209486217
 Conc: 5.87 ng/ml



#6 beta-BHC
 R.T.: 5.217 min
 Delta R.T.: 0.000 min
 Response: 2107097
 Conc: 5.56 ng/ml



#6 beta-BHC
 R.T.: 4.909 min
 Delta R.T.: 0.000 min
 Response: 86134425
 Conc: 5.39 ng/ml

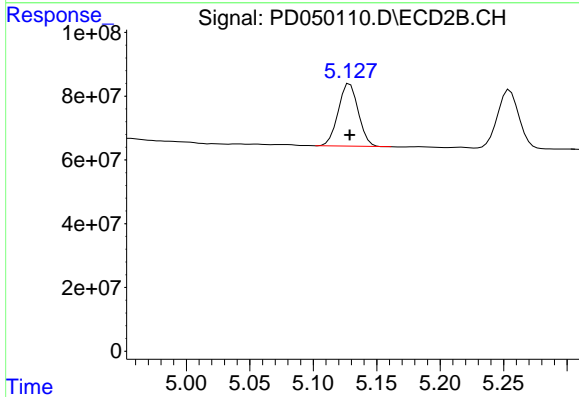


#7 delta-BHC

R.T.: 5.437 min
 Delta R.T.: 0.000 min
 Response: 4406174
 Conc: 5.05 ng/ml

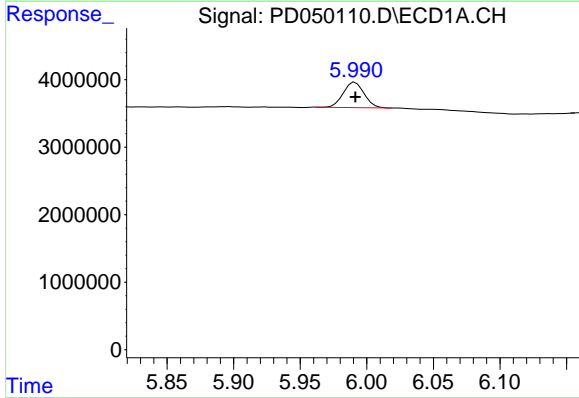
Instrument :
 ECD_D
 ClientSampled :
 PSTDICC005

Manual Integrations
 APPROVED
 Sohil
 10/30/2018 10:41:15 AM



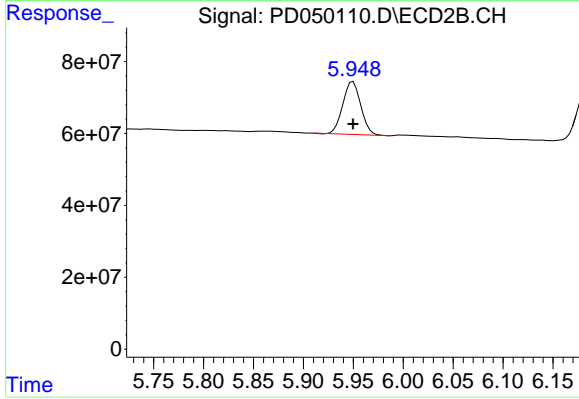
#7 delta-BHC

R.T.: 5.129 min
 Delta R.T.: 0.000 min
 Response: 215391931
 Conc: 5.63 ng/ml



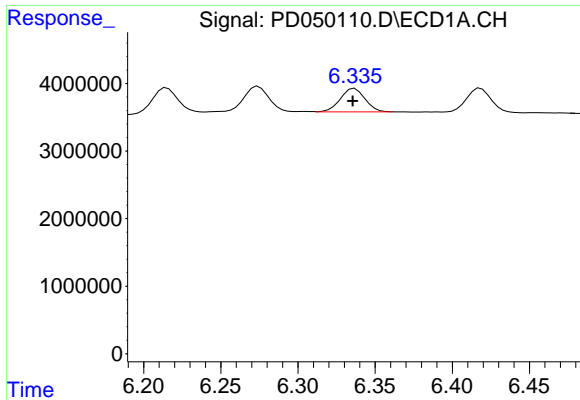
#8 Heptachlor epoxide

R.T.: 5.991 min
 Delta R.T.: 0.000 min
 Response: 4085899
 Conc: 5.17 ng/ml



#8 Heptachlor epoxide

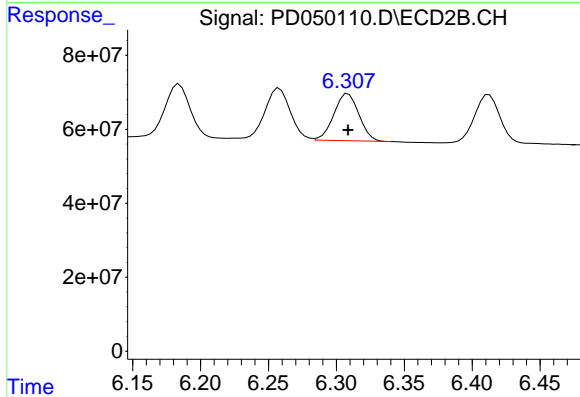
R.T.: 5.950 min
 Delta R.T.: 0.000 min
 Response: 184441703
 Conc: 5.81 ng/ml



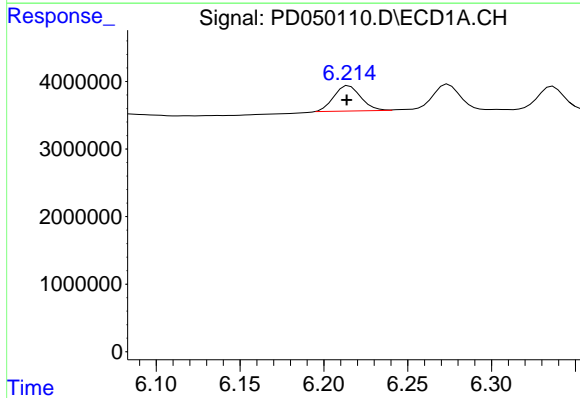
#9 Endosulfan I
 R.T.: 6.335 min
 Delta R.T.: 0.000 min
 Response: 3855064
 Conc: 5.16 ng/ml m

Instrument :
 ECD_D
 ClientSampled :
 PSTDICC005

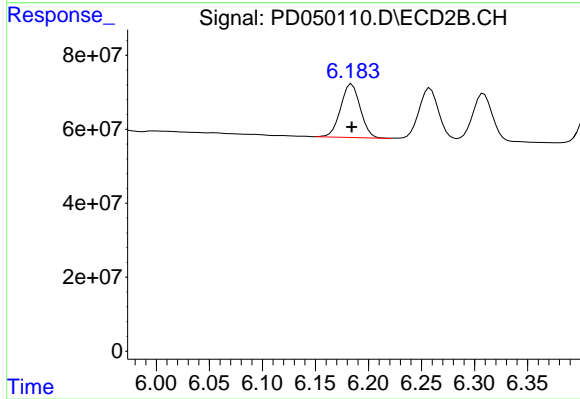
Manual Integrations
APPROVED
 Sohil
 10/30/2018 10:41:15 AM



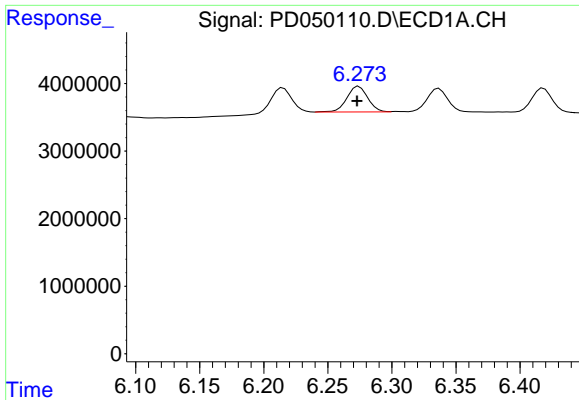
#9 Endosulfan I
 R.T.: 6.309 min
 Delta R.T.: 0.000 min
 Response: 160969711
 Conc: 5.69 ng/ml



#10 gamma-Chlordane
 R.T.: 6.214 min
 Delta R.T.: 0.000 min
 Response: 4203517
 Conc: 5.09 ng/ml m



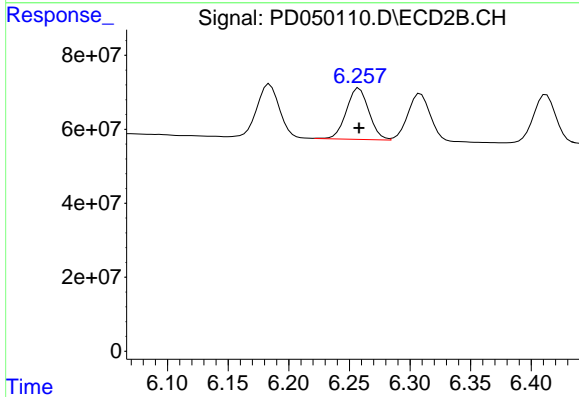
#10 gamma-Chlordane
 R.T.: 6.184 min
 Delta R.T.: 0.000 min
 Response: 186677698
 Conc: 5.76 ng/ml



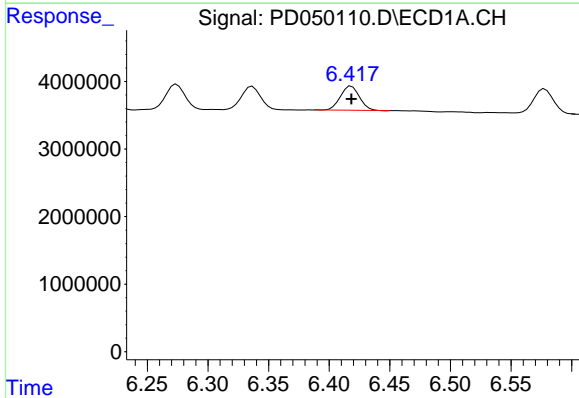
#11 alpha-Chlordane
 R.T.: 6.273 min
 Delta R.T.: 0.000 min
 Response: 4309743
 Conc: 5.28 ng/ml m

Instrument :
 ECD_D
 ClientSampled :
 PSTDICC005

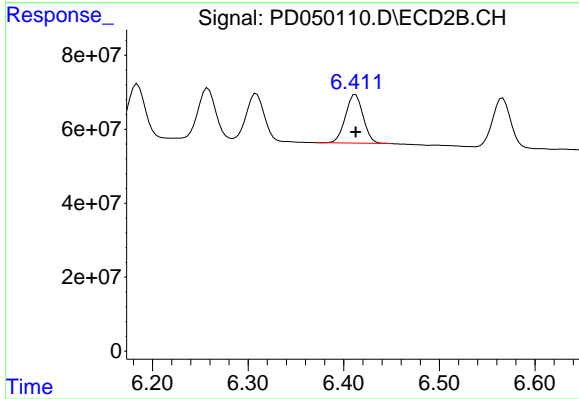
Manual Integrations
 APPROVED
 Sohil
 10/30/2018 10:41:15 AM



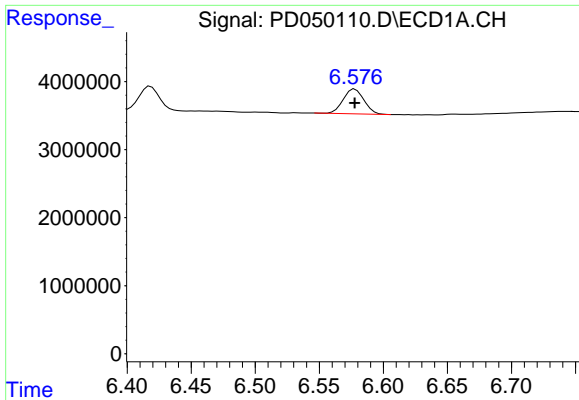
#11 alpha-Chlordane
 R.T.: 6.258 min
 Delta R.T.: 0.000 min
 Response: 180197648
 Conc: 5.82 ng/ml



#12 4,4'-DDE
 R.T.: 6.418 min
 Delta R.T.: 0.000 min
 Response: 3911065
 Conc: 5.11 ng/ml



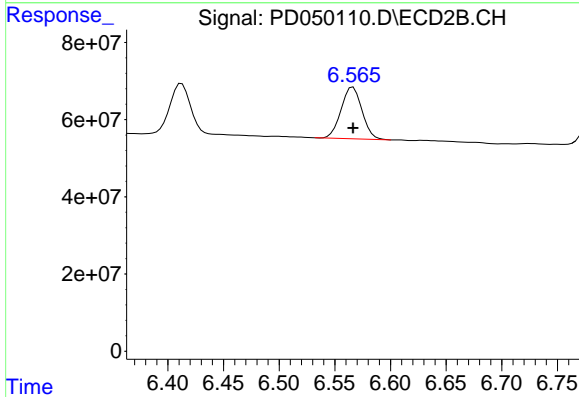
#12 4,4'-DDE
 R.T.: 6.412 min
 Delta R.T.: 0.000 min
 Response: 168715575
 Conc: 5.66 ng/ml



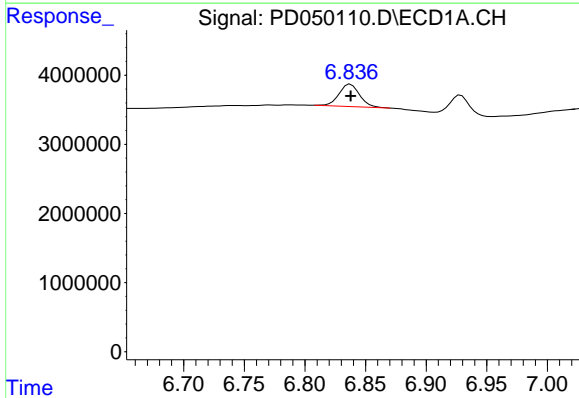
#13 Dieldrin
 R.T.: 6.578 min
 Delta R.T.: 0.000 min
 Response: 4098194
 Conc: 5.07 ng/ml

Instrument :
 ECD_D
 ClientSampled :
 PSTDICC005

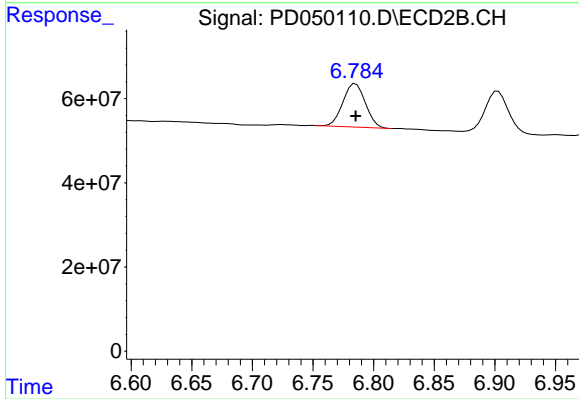
Manual Integrations
 APPROVED
 Sohil
 10/30/2018 10:41:15 AM



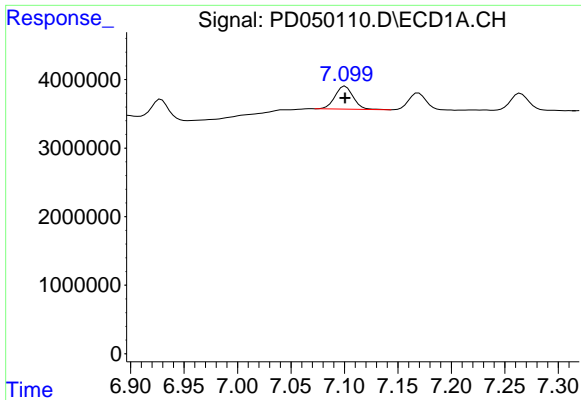
#13 Dieldrin
 R.T.: 6.566 min
 Delta R.T.: 0.000 min
 Response: 174795189
 Conc: 5.77 ng/ml



#14 Endrin
 R.T.: 6.838 min
 Delta R.T.: 0.000 min
 Response: 3834235
 Conc: 5.46 ng/ml



#14 Endrin
 R.T.: 6.785 min
 Delta R.T.: 0.000 min
 Response: 132043171
 Conc: 5.57 ng/ml

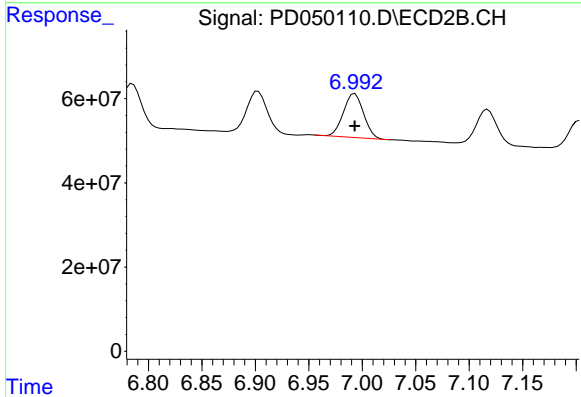


#15 Endosulfan II

R.T.: 7.101 min
 Delta R.T.: 0.000 min
 Response: 3981478
 Conc: 5.43 ng/ml

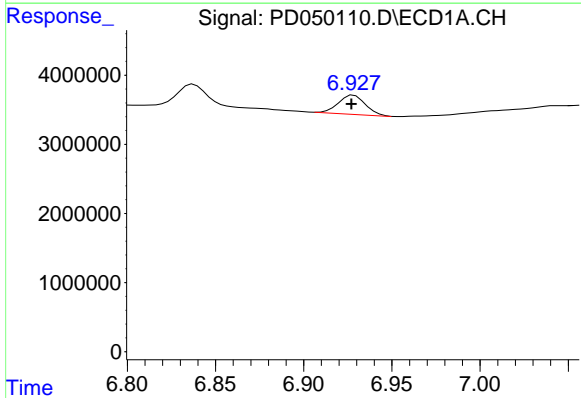
Instrument :
 ECD_D
 ClientSampled :
 PSTDICC005

Manual Integrations
 APPROVED
 Sohil
 10/30/2018 10:41:15 AM



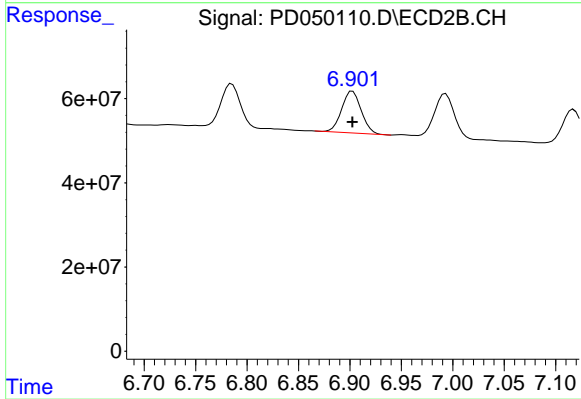
#15 Endosulfan II

R.T.: 6.993 min
 Delta R.T.: 0.000 min
 Response: 135299936
 Conc: 5.60 ng/ml



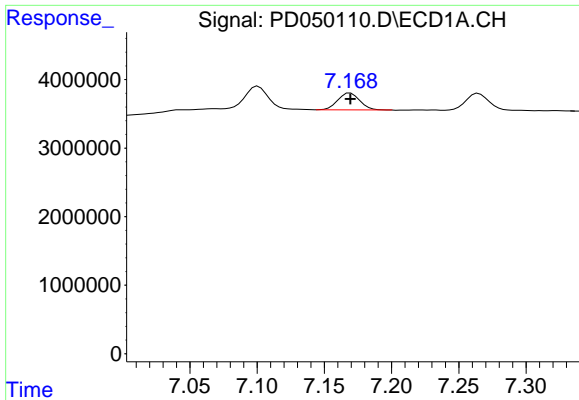
#16 4,4'-DDD

R.T.: 6.927 min
 Delta R.T.: 0.000 min
 Response: 2962052
 Conc: 4.78 ng/ml m



#16 4,4'-DDD

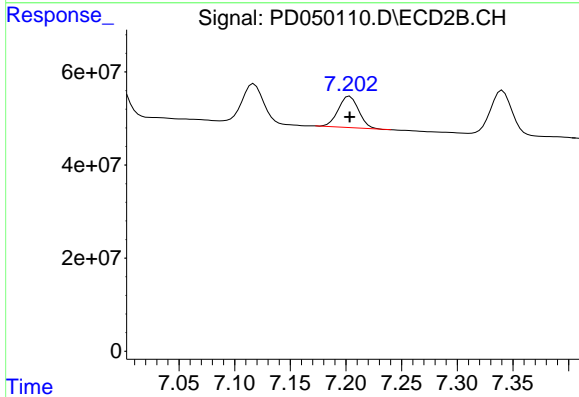
R.T.: 6.903 min
 Delta R.T.: 0.000 min
 Response: 130036138
 Conc: 5.68 ng/ml



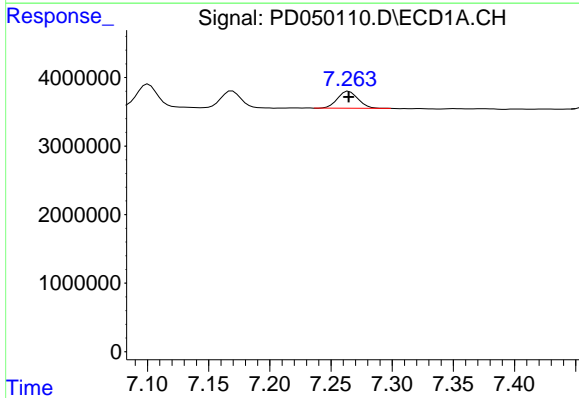
#17 4,4'-DDT
 R.T.: 7.169 min
 Delta R.T.: 0.000 min
 Response: 2790943
 Conc: 4.55 ng/ml

Instrument :
 ECD_D
 ClientSampled :
 PSTDICC005

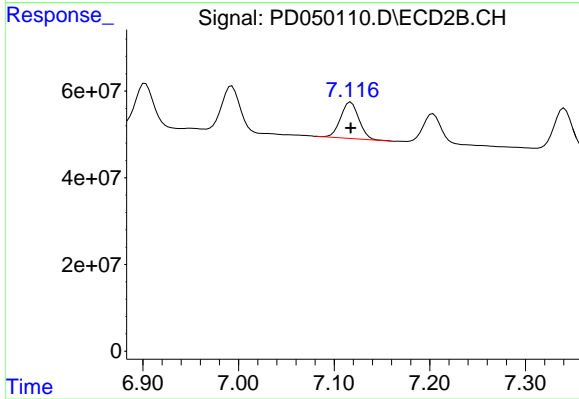
Manual Integrations
APPROVED
 Sohil
 10/30/2018 10:41:15 AM



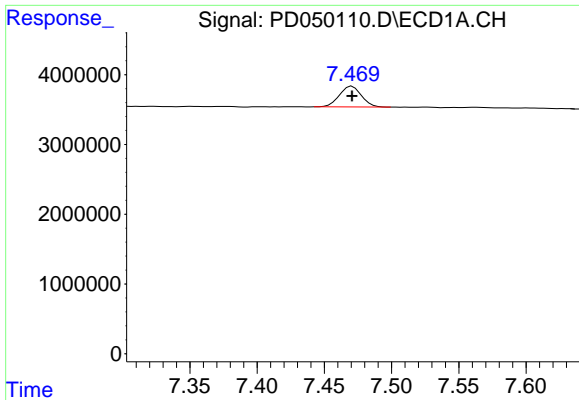
#17 4,4'-DDT
 R.T.: 7.203 min
 Delta R.T.: 0.000 min
 Response: 85528860
 Conc: 4.62 ng/ml



#18 Endrin aldehyde
 R.T.: 7.265 min
 Delta R.T.: 0.000 min
 Response: 2904296
 Conc: 5.21 ng/ml



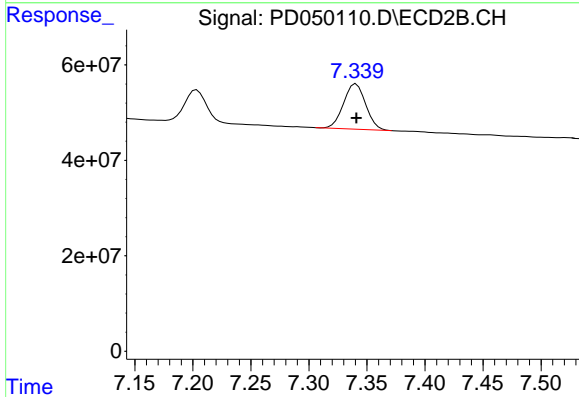
#18 Endrin aldehyde
 R.T.: 7.117 min
 Delta R.T.: 0.000 min
 Response: 110417132
 Conc: 5.71 ng/ml



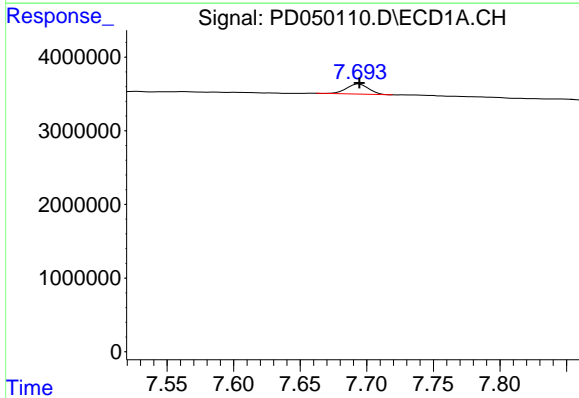
#19 Endosulfan Sulfate
 R.T.: 7.471 min
 Delta R.T.: 0.000 min
 Response: 3397822
 Conc: 5.20 ng/ml

Instrument :
 ECD_D
 ClientSampled :
 PSTDICC005

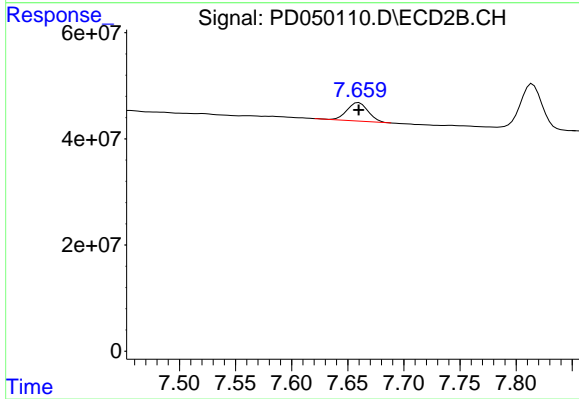
Manual Integrations
 APPROVED
 Sohil
 10/30/2018 10:41:15 AM



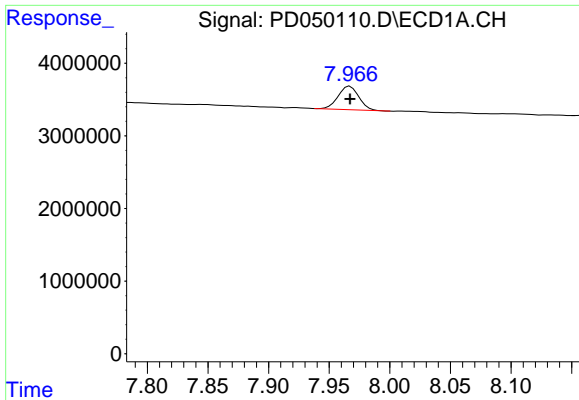
#19 Endosulfan Sulfate
 R.T.: 7.341 min
 Delta R.T.: 0.000 min
 Response: 125732420
 Conc: 5.76 ng/ml



#20 Methoxychlor
 R.T.: 7.694 min
 Delta R.T.: 0.000 min
 Response: 1553603
 Conc: 4.95 ng/ml



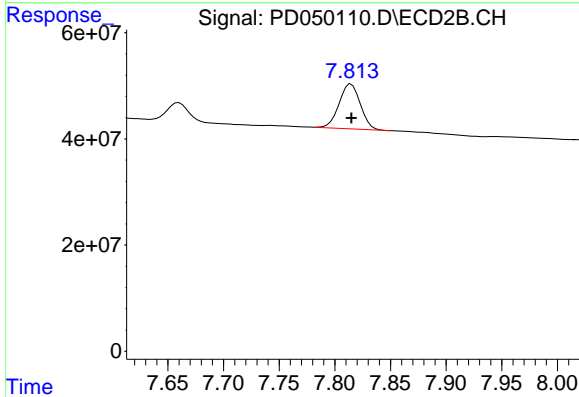
#20 Methoxychlor
 R.T.: 7.660 min
 Delta R.T.: 0.000 min
 Response: 44595219
 Conc: 4.97 ng/ml



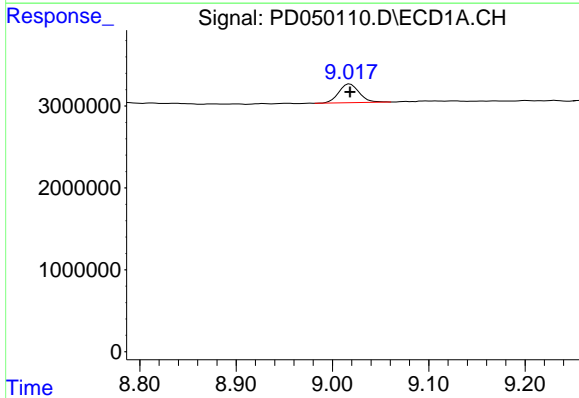
#21 Endrin ketone
 R.T.: 7.967 min
 Delta R.T.: 0.000 min
 Response: 3811002
 Conc: 5.14 ng/ml

Instrument :
 ECD_D
 ClientSampled :
 PSTDICC005

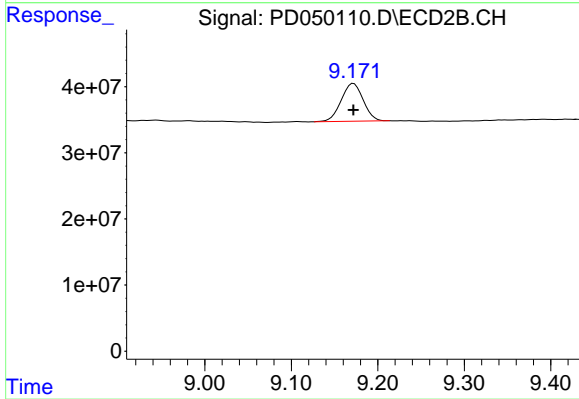
Manual Integrations
 APPROVED
 Sohil
 10/30/2018 10:41:15 AM



#21 Endrin ketone
 R.T.: 7.815 min
 Delta R.T.: 0.000 min
 Response: 111712657
 Conc: 5.54 ng/ml



#28 Decachlorobiphenyl
 R.T.: 9.018 min
 Delta R.T.: 0.000 min
 Response: 3386893
 Conc: 5.63 ng/ml



#28 Decachlorobiphenyl
 R.T.: 9.172 min
 Delta R.T.: 0.000 min
 Response: 100875356
 Conc: 5.87 ng/ml