

Data Path : Z:\pestpcbsrv\HPCHEM1\ECD_D\Data\PD103021\
 Data File : PD066632.D
 Signal(s) : Signal #1: ECD1A.ch Signal #2: ECD2B.ch
 Acq On : 29 Oct 2021 11:30
 Operator : AR\AJ
 Sample : M4068-02
 Misc : LOQ 5 PPB
 ALS Vial : 13 Sample Multiplier: 1

Instrument :
 ECD_D
ClientSampleId :
 LOQ-SOIL-02-QT4-2021

Manual Integrations
APPROVED

Reviewed By :Abdul Mirza 11/01/2021
 Supervised By :mohammad ahmed 11/01/2021

Integration File signal 1: autoint1.e
 Integration File signal 2: autoint2.e
 Quant Time: Nov 01 04:53:30 2021
 Quant Method : Z:\pestpcbsrv\HPCHEM1\ECD_D\Method\PD102821.M
 Quant Title : GC Extractables
 QLast Update : Thu Oct 28 02:17:57 2021
 Response via : Initial Calibration
 Integrator: ChemStation

Volume Inj. : 2 µl
 Signal #1 Phase : ZB-MR2 Signal #2 Phase: ZB-MR1
 Signal #1 Info : 30M x 0.32mm x0.2 Signal #2 Info : 30M x 0.32mm x 0.50µm

Compound	RT#1	RT#2	Resp#1	Resp#2	ng/ml	ng/ml
System Monitoring Compounds						
1) SA Tetrachlo...	3.441	3.969	32602873	150.3E6	17.474	18.576
28) SA Decachlor...	8.170	9.025	21282411	103.6E6	18.420	19.239
Target Compounds						
2) A alpha-BHC	3.878	4.362	12947153	67482471	4.235	6.117 #
3) MA gamma-BHC...	4.160	4.647	13918924	46668615	4.609	4.683
4) MA Heptachlor	4.454	5.147	12076320	51123264	4.071	5.216 #
5) MB Aldrin	4.699	5.451	11982086	44967362	4.158	4.954
6) B beta-BHC	4.409	4.823	5694689	29838961	4.559	6.408m#
7) B delta-BHC	4.610	5.039	10896112	50171927	4.053	5.489 #
8) B Heptachlo...	5.140	5.839	11318641	43540593	4.376	6.007 #
9) A Endosulfan I	5.476	6.197	10554440	40680050	4.444	5.159
10) B gamma-Chl...	5.364	6.073	11412829	41855228	4.380	5.017
11) B alpha-Chl...	5.423	6.145	11337494	42886614	4.418	5.170
12) B 4,4'-DDE	5.587	6.305	9875862	38703594	4.239	4.911
13) MA Dieldrin	5.719	6.455	10957064	43448042	4.379	5.236
14) MA Endrin	5.976	6.673	8988884	29173979	4.295	4.239
15) B Endosulfa...	6.247	6.888	9595214	39092473	4.825m	5.537
16) A 4,4'-DDD	6.102	6.799	7586244	36065632	4.046	5.307 #
17) MA 4,4'-DDT	6.340	7.097	7585338	34094263	3.944	4.701
18) B Endrin al...	6.418	7.012	8263556	33954121	5.346	5.969
19) B Endosulfa...	6.630	7.236	8996178	40313278	4.834	5.557
20) A Methoxychlor	6.888	7.560	4844862	20360017	4.691	4.998
21) B Endrin ke...	7.121	7.708	11289678	49712063	5.174	5.911
22) Mirex	7.302	8.156	8231167	36676735	5.291	6.201

(f)=RT Delta > 1/2 Window (#)=Amounts differ by > 25% (m)=manual int.

Data Path : Z:\pestpcbsrv\HPCHEM1\ECD_D\Data\PD103021\
 Data File : PD066632.D
 Signal(s) : Signal #1: ECD1A.ch Signal #2: ECD2B.ch
 Acq On : 29 Oct 2021 11:30
 Operator : AR\AJ
 Sample : M4068-02
 Misc : LOQ 5 PPB
 ALS Vial : 13 Sample Multiplier: 1

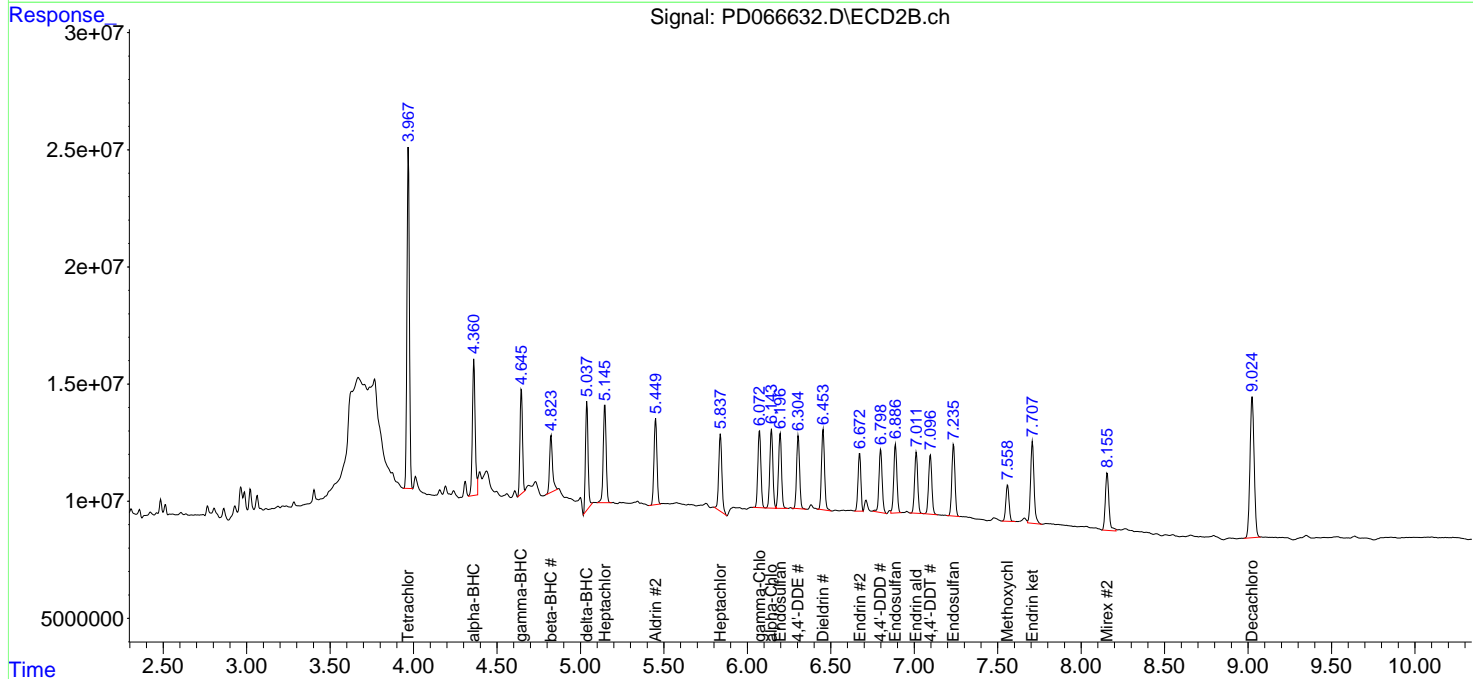
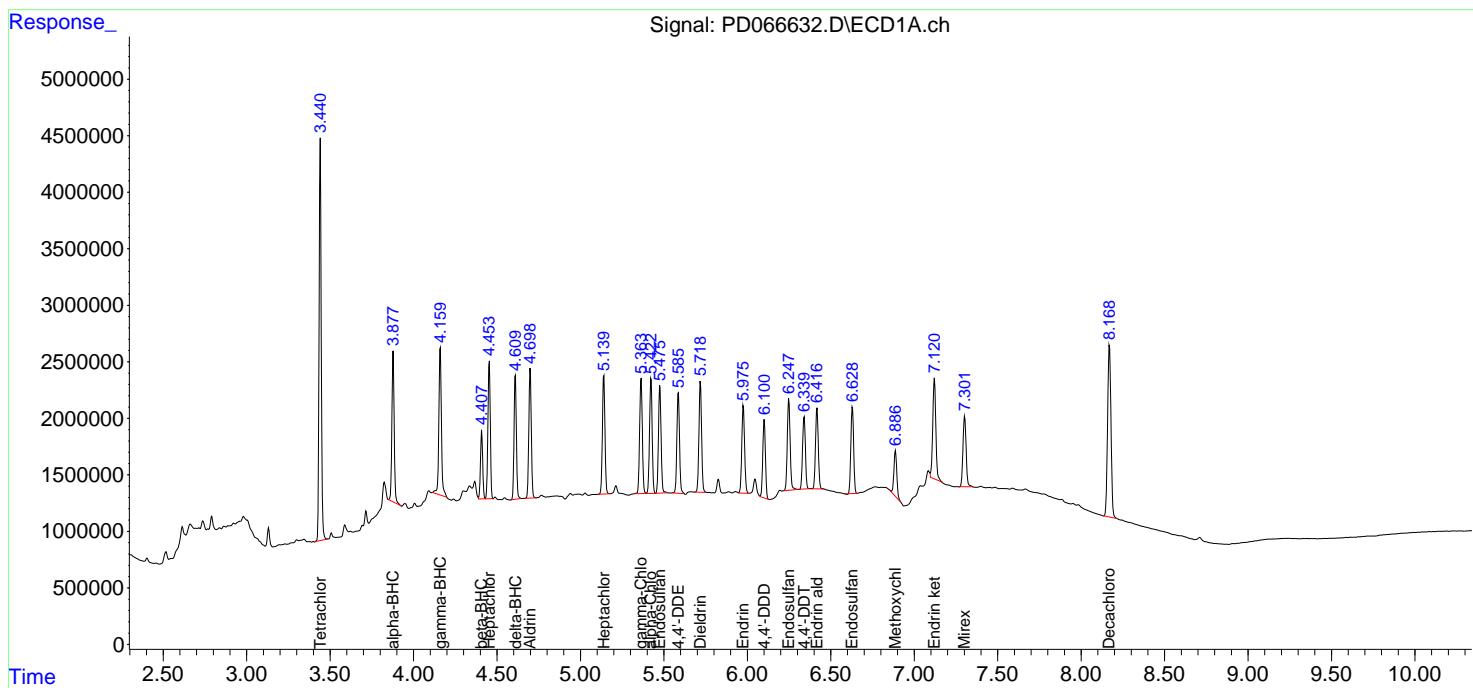
Instrument :
 ECD_D
 ClientSampleId :
 LOQ-SOIL-02-QT4-2021

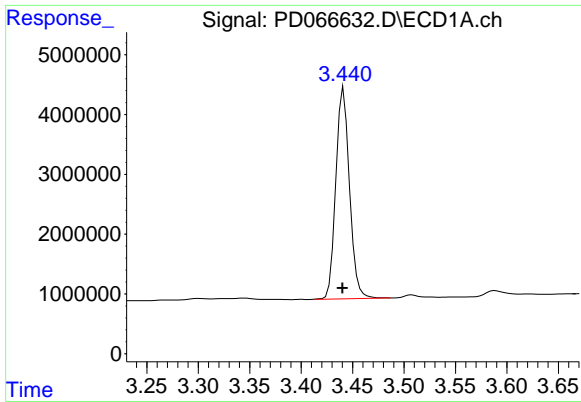
Manual Integrations
 APPROVED

Reviewed By :Abdul Mirza 11/01/2021
 Supervised By :mohammad ahmed 11/01/2021

Integration File signal 1: autoint1.e
 Integration File signal 2: autoint2.e
 Quant Time: Nov 01 04:53:30 2021
 Quant Method : Z:\pestpcbsrv\HPCHEM1\ECD_D\Method\PD102821.M
 Quant Title : GC Extractables
 QLast Update : Thu Oct 28 02:17:57 2021
 Response via : Initial Calibration
 Integrator: ChemStation

Volume Inj. : 2 µl
 Signal #1 Phase : ZB-MR2 Signal #2 Phase: ZB-MR1
 Signal #1 Info : 30M x 0.32mm x0.2 Signal #2 Info : 30M x 0.32mm x 0.50µm

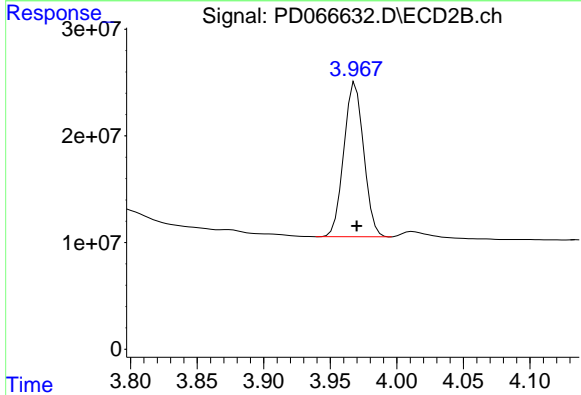




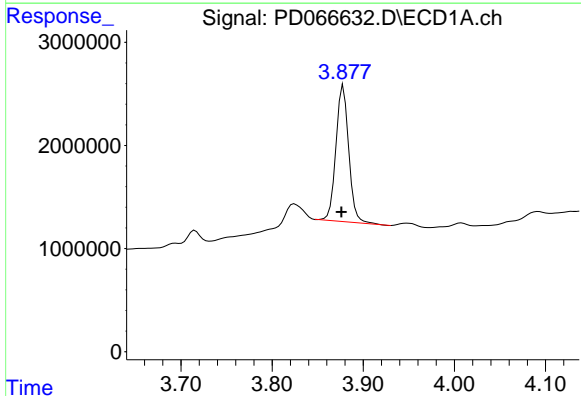
#1 Tetrachloro-m-xylene
 R.T.: 3.441 min
 Delta R.T.: 0.001 min
 Response: 32602873
 Conc: 17.47 ng/ml

Instrument : ECD_D
 ClientSampleId : LOQ-SOIL-02-QT4-2021

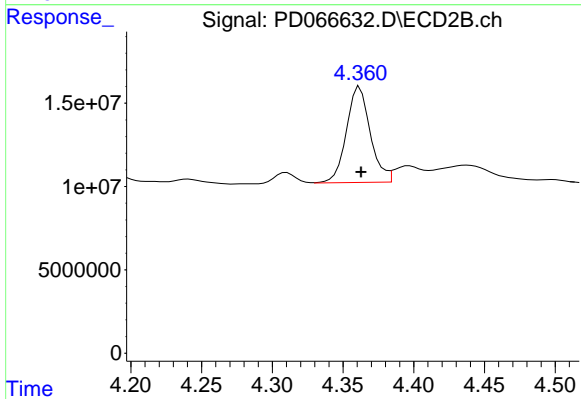
Manual Integrations
APPROVED
 Reviewed By :Abdul Mirza 11/01/2021
 Supervised By :mohammad ahmed 11/01/2021



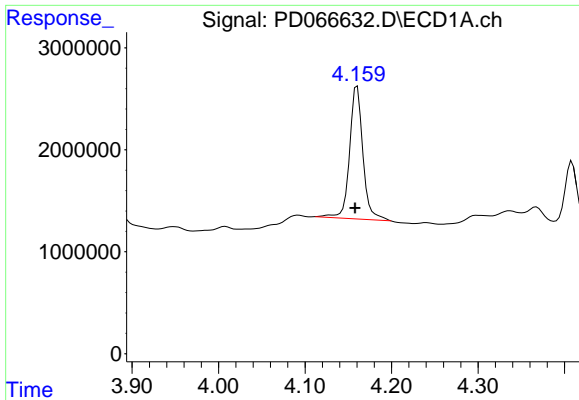
#1 Tetrachloro-m-xylene
 R.T.: 3.969 min
 Delta R.T.: 0.000 min
 Response: 150319222
 Conc: 18.58 ng/ml



#2 alpha-BHC
 R.T.: 3.878 min
 Delta R.T.: 0.002 min
 Response: 12947153
 Conc: 4.23 ng/ml



#2 alpha-BHC
 R.T.: 4.362 min
 Delta R.T.: 0.000 min
 Response: 67482471
 Conc: 6.12 ng/ml

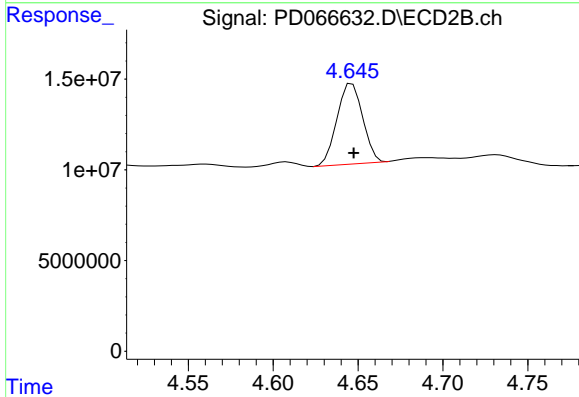


#3 gamma-BHC (Lindane)
 R.T.: 4.160 min
 Delta R.T.: 0.002 min
 Response: 13918924
 Conc: 4.61 ng/ml

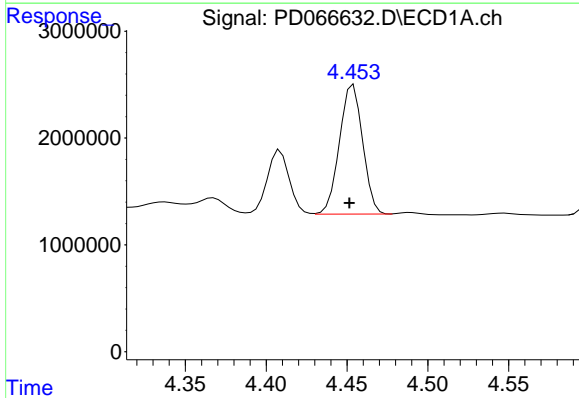
Instrument : ECD_D
 ClientSampleId : LOQ-SOIL-02-QT4-2021

Manual Integrations
APPROVED

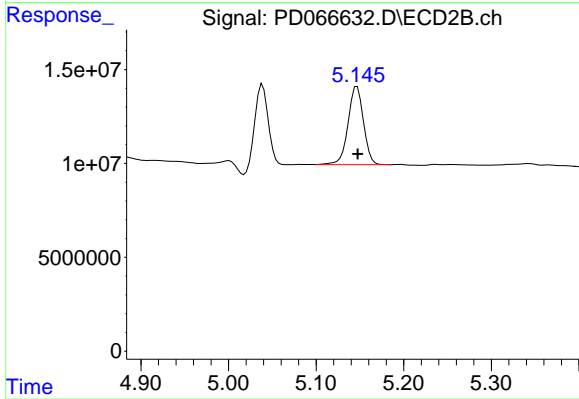
Reviewed By :Abdul Mirza 11/01/2021
 Supervised By :mohammad ahmed 11/01/2021



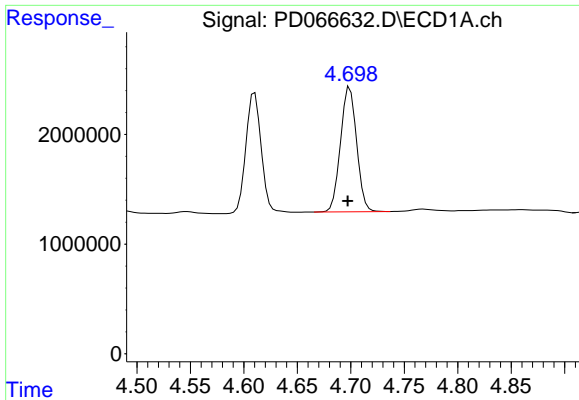
#3 gamma-BHC (Lindane)
 R.T.: 4.647 min
 Delta R.T.: 0.000 min
 Response: 46668615
 Conc: 4.68 ng/ml



#4 Heptachlor
 R.T.: 4.454 min
 Delta R.T.: 0.002 min
 Response: 12076320
 Conc: 4.07 ng/ml



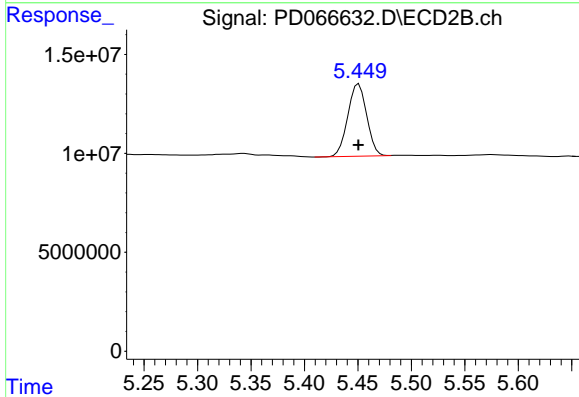
#4 Heptachlor
 R.T.: 5.147 min
 Delta R.T.: 0.000 min
 Response: 51123264
 Conc: 5.22 ng/ml



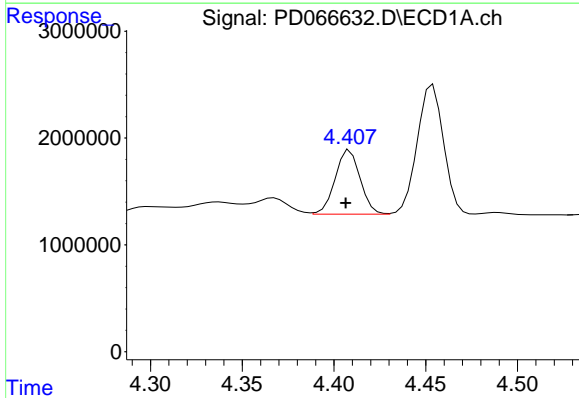
#5 Aldrin
 R.T.: 4.699 min
 Delta R.T.: 0.002 min
 Response: 11982086
 Conc: 4.16 ng/ml

Instrument : ECD_D
 ClientSampleId : LOQ-SOIL-02-QT4-2021

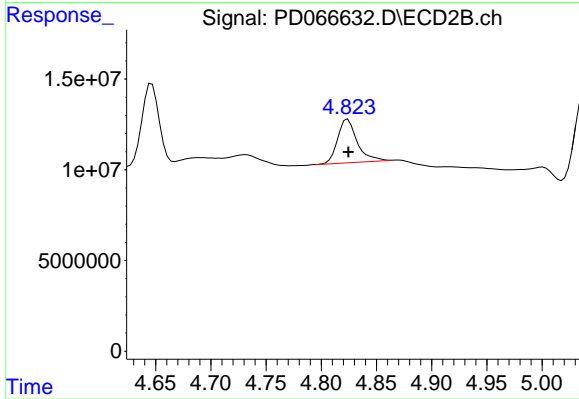
**Manual Integrations
 APPROVED**
 Reviewed By :Abdul Mirza 11/01/2021
 Supervised By :mohammad ahmed 11/01/2021



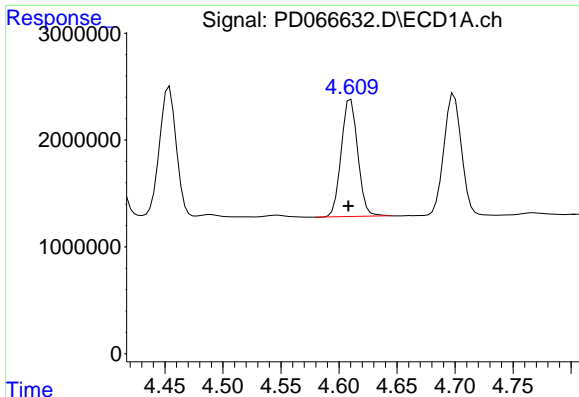
#5 Aldrin
 R.T.: 5.451 min
 Delta R.T.: 0.000 min
 Response: 44967362
 Conc: 4.95 ng/ml



#6 beta-BHC
 R.T.: 4.409 min
 Delta R.T.: 0.002 min
 Response: 5694689
 Conc: 4.56 ng/ml



#6 beta-BHC
 R.T.: 4.823 min
 Delta R.T.: -0.002 min
 Response: 29838961
 Conc: 6.41 ng/ml m



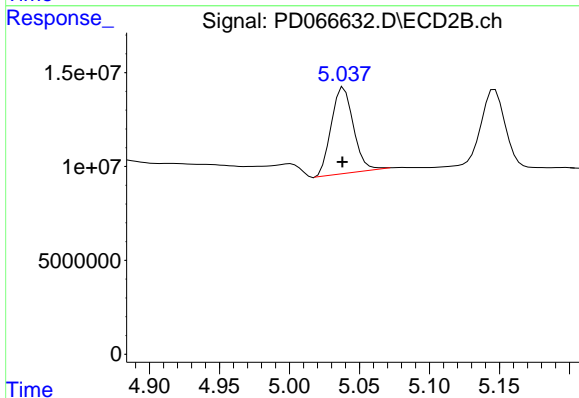
#7 delta-BHC

R.T.: 4.610 min
 Delta R.T.: 0.002 min
 Response: 10896112
 Conc: 4.05 ng/ml

Instrument : ECD_D
 ClientSampleId : LOQ-SOIL-02-QT4-2021

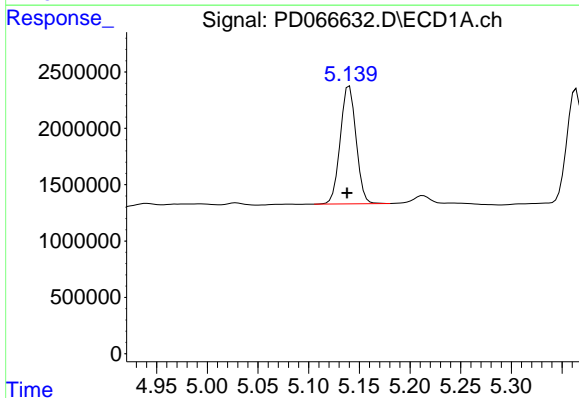
Manual Integrations
 APPROVED

Reviewed By :Abdul Mirza 11/01/2021
 Supervised By :mohammad ahmed 11/01/2021



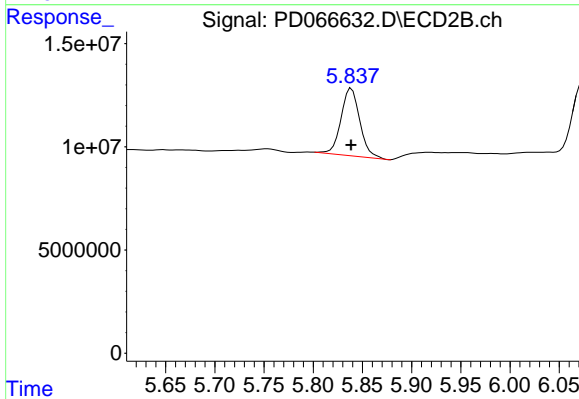
#7 delta-BHC

R.T.: 5.039 min
 Delta R.T.: 0.000 min
 Response: 50171927
 Conc: 5.49 ng/ml



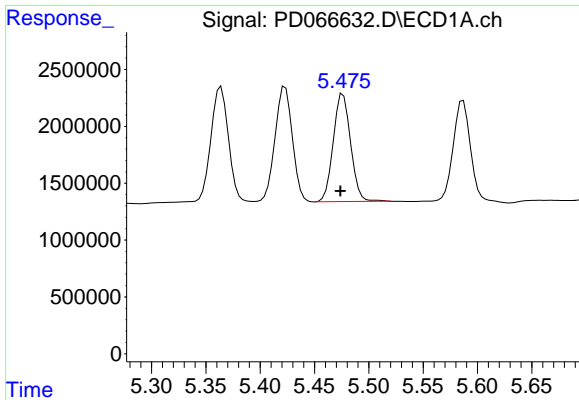
#8 Heptachlor epoxide

R.T.: 5.140 min
 Delta R.T.: 0.002 min
 Response: 11318641
 Conc: 4.38 ng/ml



#8 Heptachlor epoxide

R.T.: 5.839 min
 Delta R.T.: 0.000 min
 Response: 43540593
 Conc: 6.01 ng/ml



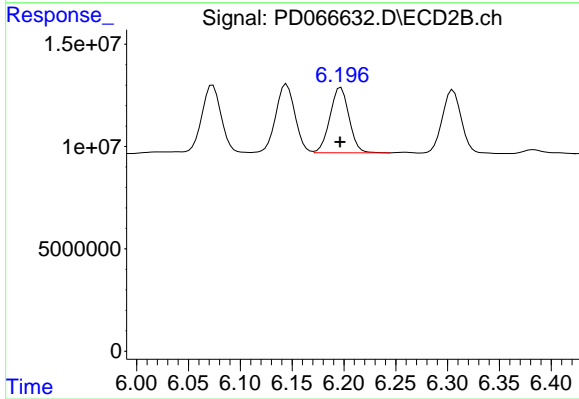
#9 Endosulfan I

R.T.: 5.476 min
 Delta R.T.: 0.003 min
 Response: 10554440
 Conc: 4.44 ng/ml

Instrument : ECD_D
 ClientSampleId : LOQ-SOIL-02-QT4-2021

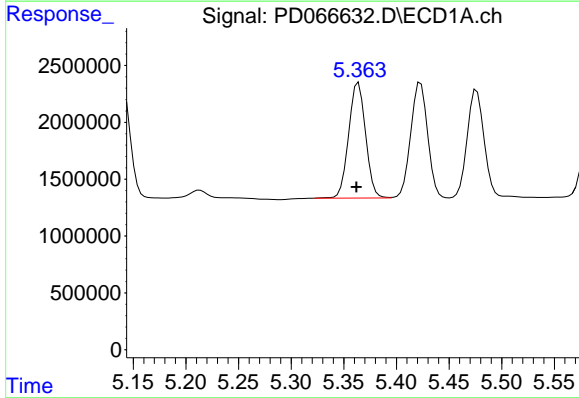
Manual Integrations
 APPROVED

Reviewed By :Abdul Mirza 11/01/2021
 Supervised By :mohammad ahmed 11/01/2021



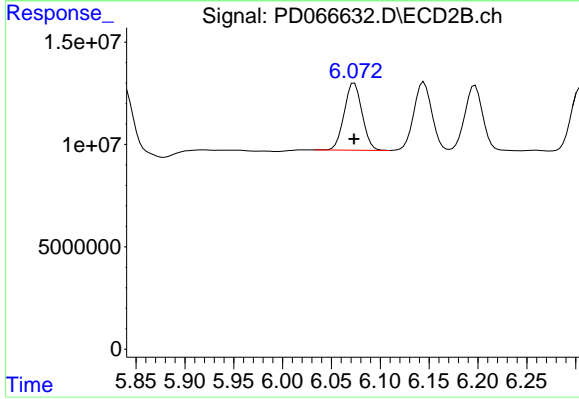
#9 Endosulfan I

R.T.: 6.197 min
 Delta R.T.: 0.000 min
 Response: 40680050
 Conc: 5.16 ng/ml



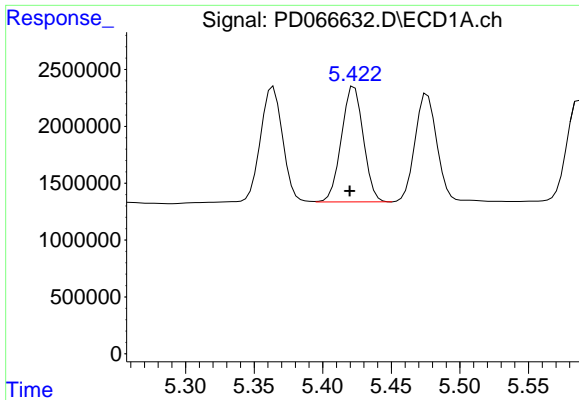
#10 gamma-Chlordane

R.T.: 5.364 min
 Delta R.T.: 0.002 min
 Response: 11412829
 Conc: 4.38 ng/ml



#10 gamma-Chlordane

R.T.: 6.073 min
 Delta R.T.: 0.000 min
 Response: 41855228
 Conc: 5.02 ng/ml



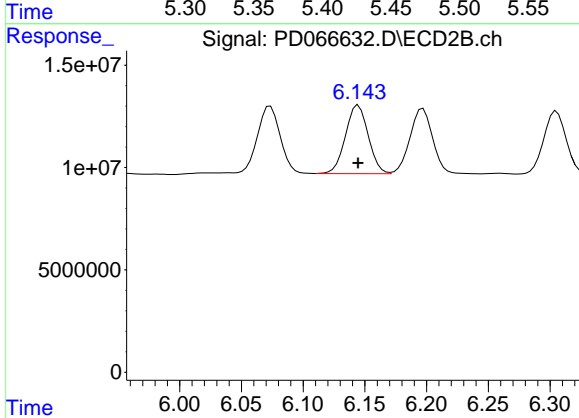
#11 alpha-Chlordane

R.T.: 5.423 min
 Delta R.T.: 0.003 min
 Response: 11337494
 Conc: 4.42 ng/ml

Instrument : ECD_D
 ClientSampleId : LOQ-SOIL-02-QT4-2021

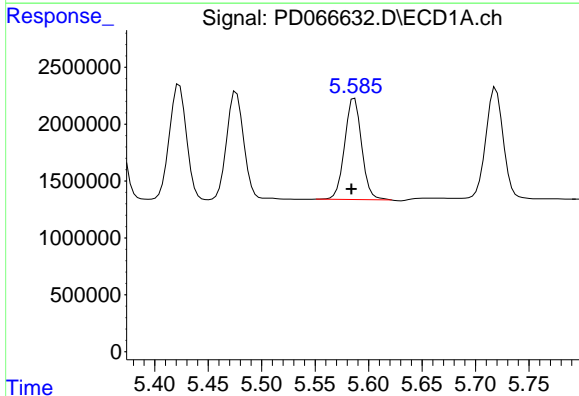
Manual Integrations
 APPROVED

Reviewed By :Abdul Mirza 11/01/2021
 Supervised By :mohammad ahmed 11/01/2021



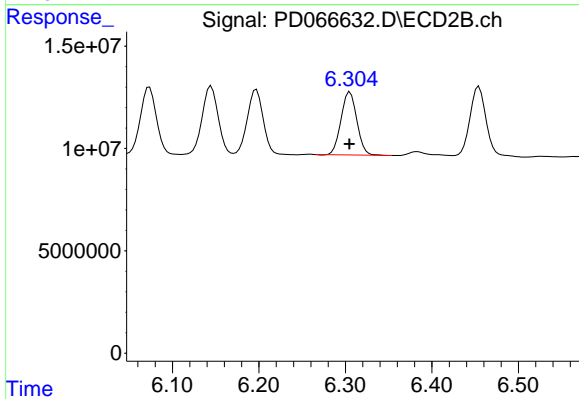
#11 alpha-Chlordane

R.T.: 6.145 min
 Delta R.T.: 0.000 min
 Response: 42886614
 Conc: 5.17 ng/ml



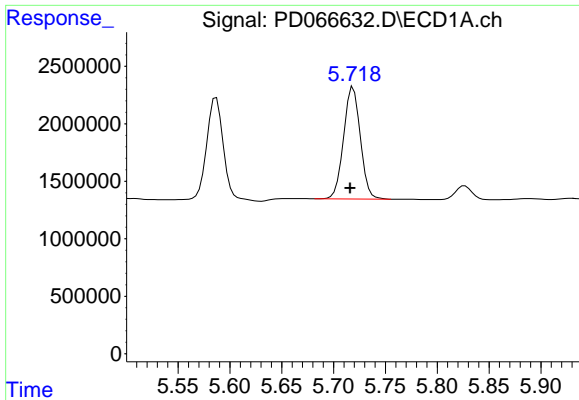
#12 4,4'-DDE

R.T.: 5.587 min
 Delta R.T.: 0.003 min
 Response: 9875862
 Conc: 4.24 ng/ml



#12 4,4'-DDE

R.T.: 6.305 min
 Delta R.T.: 0.000 min
 Response: 38703594
 Conc: 4.91 ng/ml



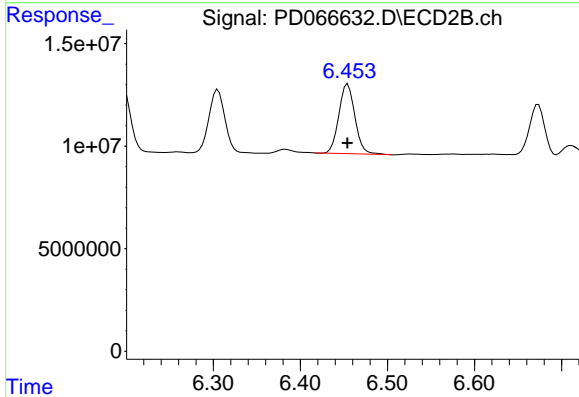
#13 Dieldrin

R.T.: 5.719 min
 Delta R.T.: 0.003 min
 Response: 10957064
 Conc: 4.38 ng/ml

Instrument : ECD_D
 ClientSampleId : LOQ-SOIL-02-QT4-2021

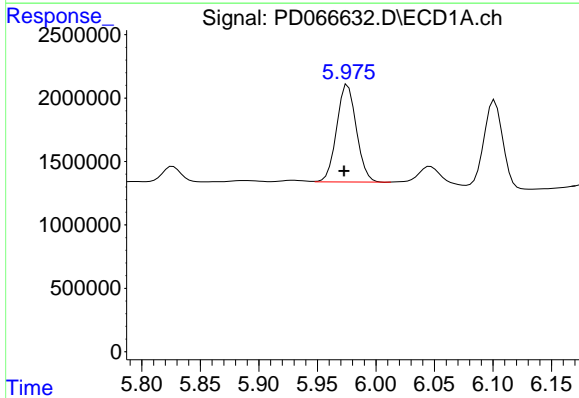
Manual Integrations
 APPROVED

Reviewed By :Abdul Mirza 11/01/2021
 Supervised By :mohammad ahmed 11/01/2021



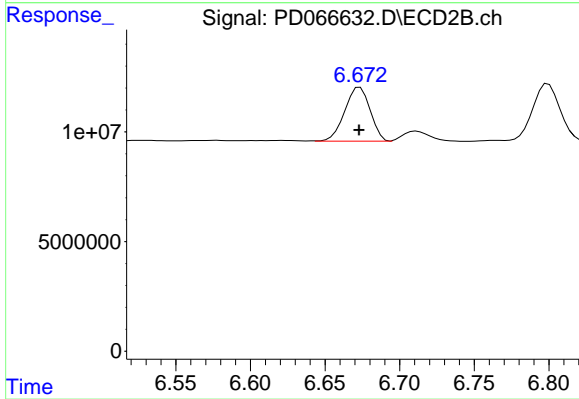
#13 Dieldrin

R.T.: 6.455 min
 Delta R.T.: 0.000 min
 Response: 43448042
 Conc: 5.24 ng/ml



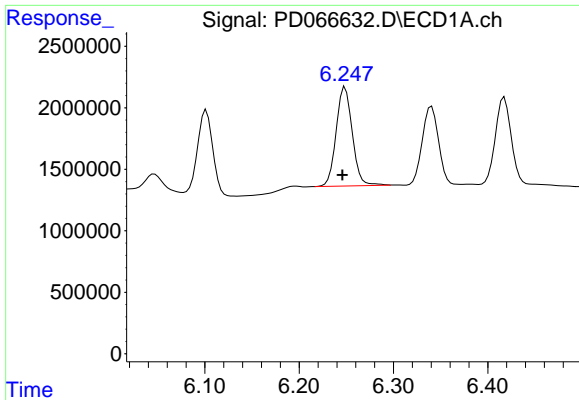
#14 Endrin

R.T.: 5.976 min
 Delta R.T.: 0.003 min
 Response: 8988884
 Conc: 4.30 ng/ml



#14 Endrin

R.T.: 6.673 min
 Delta R.T.: 0.000 min
 Response: 29173979
 Conc: 4.24 ng/ml



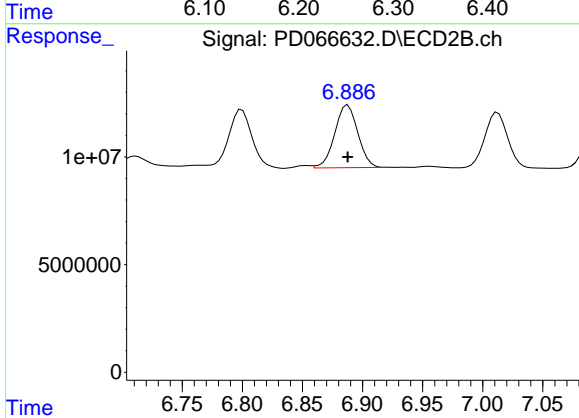
#15 Endosulfan II

R.T.: 6.247 min
 Delta R.T.: 0.002 min
 Response: 9595214
 Conc: 4.83 ng/ml

Instrument : ECD_D
 ClientSampleId : LOQ-SOIL-02-QT4-2021

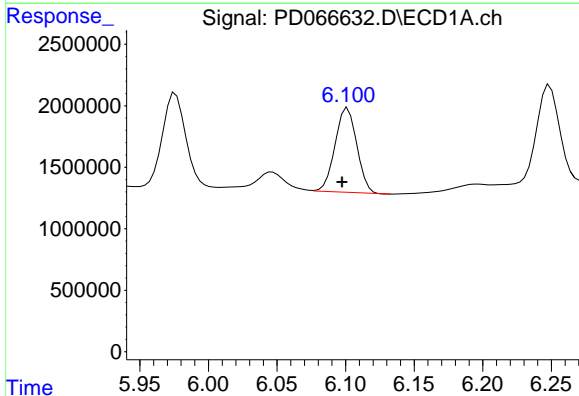
Manual Integrations
 APPROVED

Reviewed By :Abdul Mirza 11/01/2021
 Supervised By :mohammad ahmed 11/01/2021



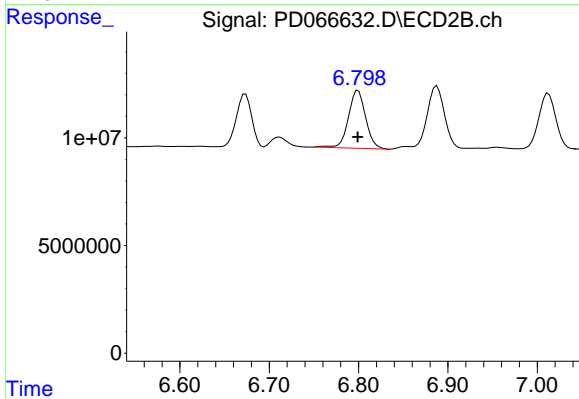
#15 Endosulfan II

R.T.: 6.888 min
 Delta R.T.: 0.000 min
 Response: 39092473
 Conc: 5.54 ng/ml



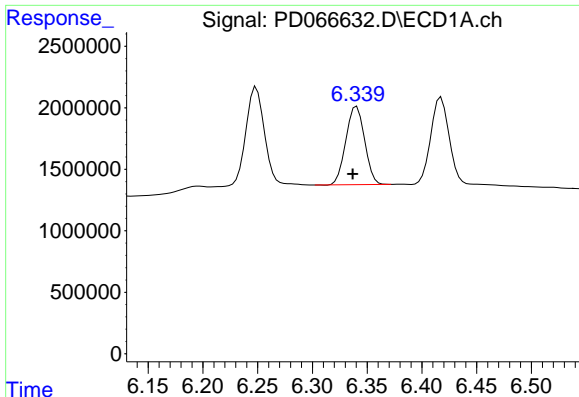
#16 4,4'-DDD

R.T.: 6.102 min
 Delta R.T.: 0.004 min
 Response: 7586244
 Conc: 4.05 ng/ml



#16 4,4'-DDD

R.T.: 6.799 min
 Delta R.T.: 0.000 min
 Response: 36065632
 Conc: 5.31 ng/ml



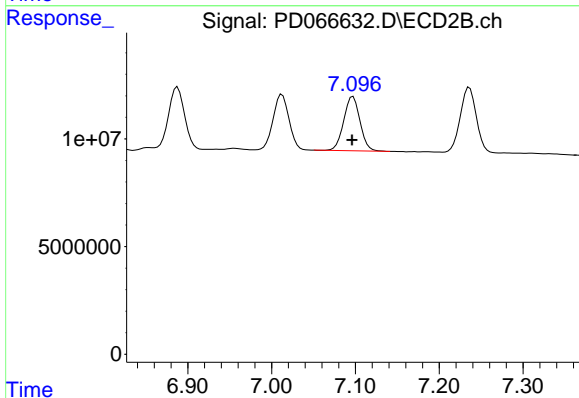
#17 4,4'-DDT

R.T.: 6.340 min
 Delta R.T.: 0.004 min
 Response: 7585338
 Conc: 3.94 ng/ml

Instrument : ECD_D
 ClientSampleId : LOQ-SOIL-02-QT4-2021

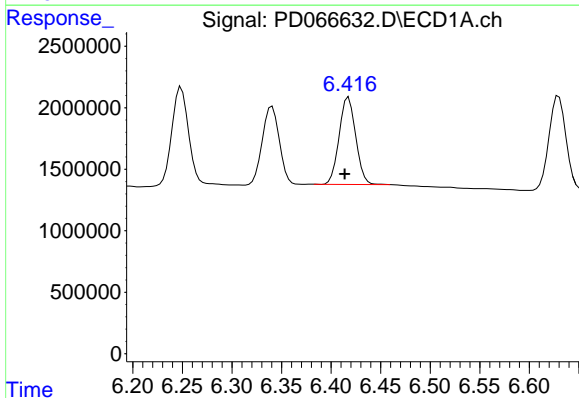
Manual Integrations
 APPROVED

Reviewed By :Abdul Mirza 11/01/2021
 Supervised By :mohammad ahmed 11/01/2021



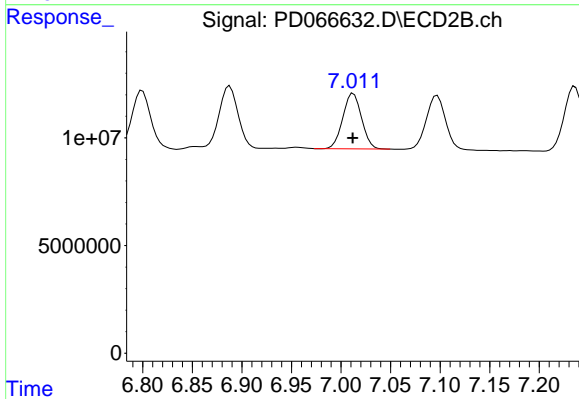
#17 4,4'-DDT

R.T.: 7.097 min
 Delta R.T.: 0.001 min
 Response: 34094263
 Conc: 4.70 ng/ml



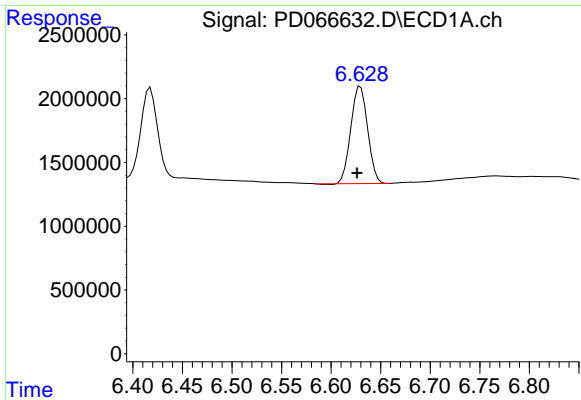
#18 Endrin aldehyde

R.T.: 6.418 min
 Delta R.T.: 0.004 min
 Response: 8263556
 Conc: 5.35 ng/ml



#18 Endrin aldehyde

R.T.: 7.012 min
 Delta R.T.: 0.000 min
 Response: 33954121
 Conc: 5.97 ng/ml

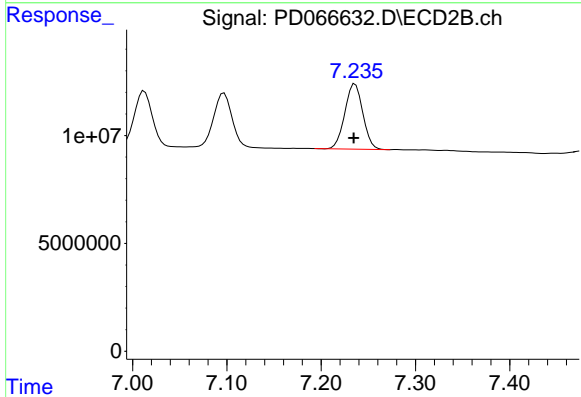


#19 Endosulfan Sulfate
 R.T.: 6.630 min
 Delta R.T.: 0.003 min
 Response: 8996178
 Conc: 4.83 ng/ml

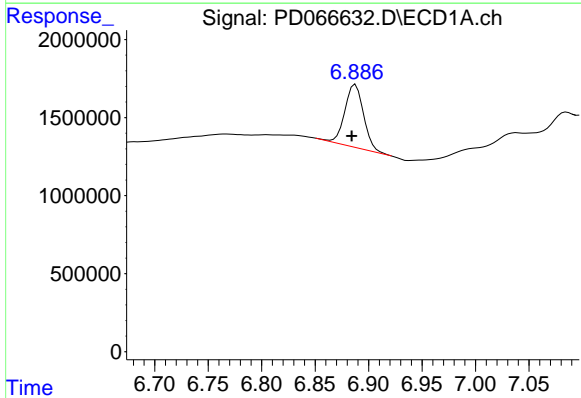
Instrument : ECD_D
 ClientSampleId : LOQ-SOIL-02-QT4-2021

Manual Integrations
 APPROVED

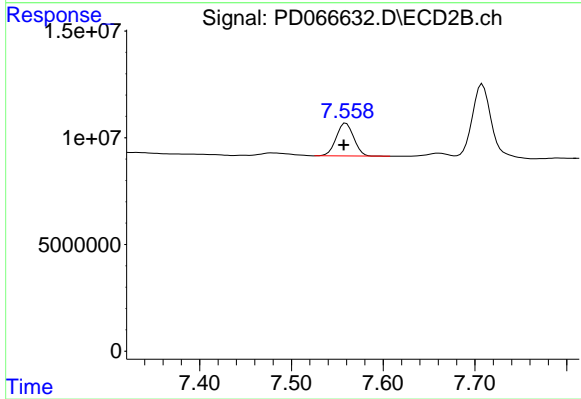
Reviewed By :Abdul Mirza 11/01/2021
 Supervised By :mohammad ahmed 11/01/2021



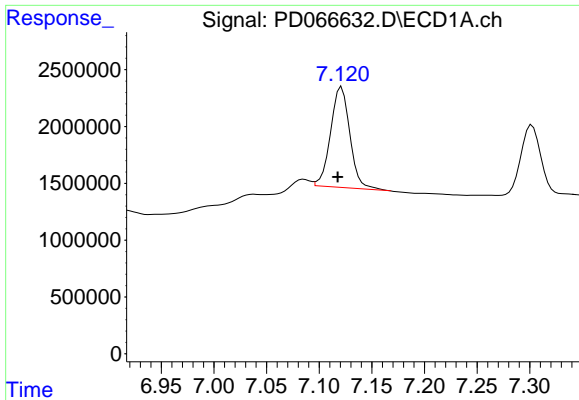
#19 Endosulfan Sulfate
 R.T.: 7.236 min
 Delta R.T.: 0.001 min
 Response: 40313278
 Conc: 5.56 ng/ml



#20 Methoxychlor
 R.T.: 6.888 min
 Delta R.T.: 0.004 min
 Response: 4844862
 Conc: 4.69 ng/ml



#20 Methoxychlor
 R.T.: 7.560 min
 Delta R.T.: 0.002 min
 Response: 20360017
 Conc: 5.00 ng/ml



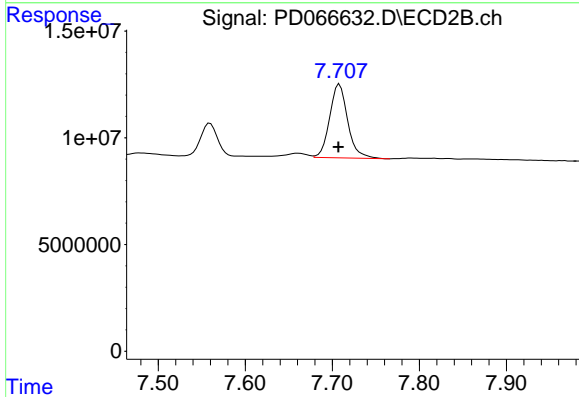
#21 Endrin ketone

R.T.: 7.121 min
 Delta R.T.: 0.003 min
 Response: 11289678
 Conc: 5.17 ng/ml

Instrument : ECD_D
 ClientSampleId : LOQ-SOIL-02-QT4-2021

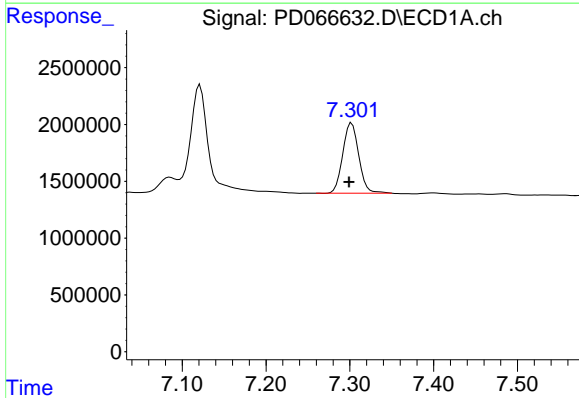
Manual Integrations
 APPROVED

Reviewed By :Abdul Mirza 11/01/2021
 Supervised By :mohammad ahmed 11/01/2021



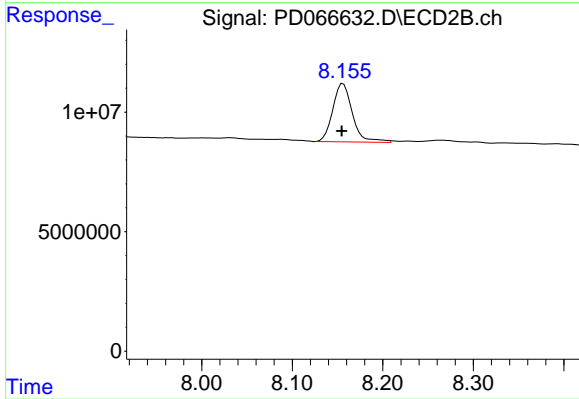
#21 Endrin ketone

R.T.: 7.708 min
 Delta R.T.: 0.001 min
 Response: 49712063
 Conc: 5.91 ng/ml



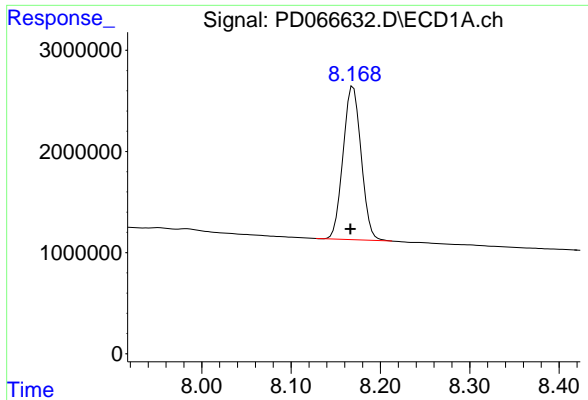
#22 Mirex

R.T.: 7.302 min
 Delta R.T.: 0.003 min
 Response: 8231167
 Conc: 5.29 ng/ml



#22 Mirex

R.T.: 8.156 min
 Delta R.T.: 0.002 min
 Response: 36676735
 Conc: 6.20 ng/ml

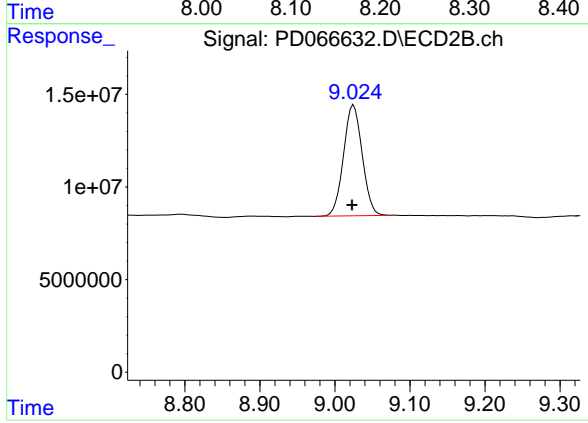


#28 Decachlorobiphenyl
 R.T.: 8.170 min
 Delta R.T.: 0.003 min
 Response: 21282411
 Conc: 18.42 ng/ml

Instrument :
 ECD_D
 ClientSampleId :
 LOQ-SOIL-02-QT4-2021

Manual Integrations
 APPROVED

Reviewed By :Abdul Mirza 11/01/2021
 Supervised By :mohammad ahmed 11/01/2021



#28 Decachlorobiphenyl
 R.T.: 9.025 min
 Delta R.T.: 0.002 min
 Response: 103631403
 Conc: 19.24 ng/ml