

Data Path : Z:\pestpcbsrv\HPCHEM1\ECD\_D\Data\PD103021\  
 Data File : PD066637.D  
 Signal(s) : Signal #1: ECD1A.ch Signal #2: ECD2B.ch  
 Acq On : 29 Oct 2021 12:56  
 Operator : AR\AJ  
 Sample : M4068-02  
 Misc : (Sig #1); CHLOR LOQ 50 PPB (Sig #2)  
 ALS Vial : 16 Sample Multiplier: 1

**Instrument :**  
 ECD\_D  
**ClientSampleId :**  
 LOQ-SOIL-02-QT4-2021

Integration File signal 1: autoint1.e  
 Integration File signal 2: autoint2.e  
 Quant Time: Nov 01 06:24:55 2021  
 Quant Method : Z:\pestpcbsrv\HPCHEM1\ECD\_D\Method\PD102821.M  
 Quant Title : GC Extractables  
 QLast Update : Thu Oct 28 02:17:57 2021  
 Response via : Initial Calibration  
 Integrator: ChemStation

Volume Inj. : 2 µl  
 Signal #1 Phase : ZB-MR2 Signal #2 Phase: ZB-MR1  
 Signal #1 Info : 30M x 0.32mm x0.2 Signal #2 Info : 30M x 0.32mm x 0.50µm

Compound	RT#1	RT#2	Resp#1	Resp#2	ng/ml	ng/ml
-----						
System Monitoring Compounds						
1) SA Tetrachlo...	3.439	3.969	37644237	168.4E6	20.175	20.815
28) SA Decachlor...	8.165	9.022	22765840	111.7E6	19.704	20.728
Target Compounds						
23) Chlordane-1	4.301	4.958	4015902	17078320	54.271	61.514
24) Chlordane-2	4.799	5.427	4710643	18205111	55.528	61.375
25) Chlordane-3	5.360	6.071	12785223	65672765	52.217m	60.911m
26) Chlordane-4	5.419	6.145	10282463	78589842	50.479	62.362
27) Chlordane-5	6.251	6.952	4202288	16388743	49.689m	60.135m
-----						

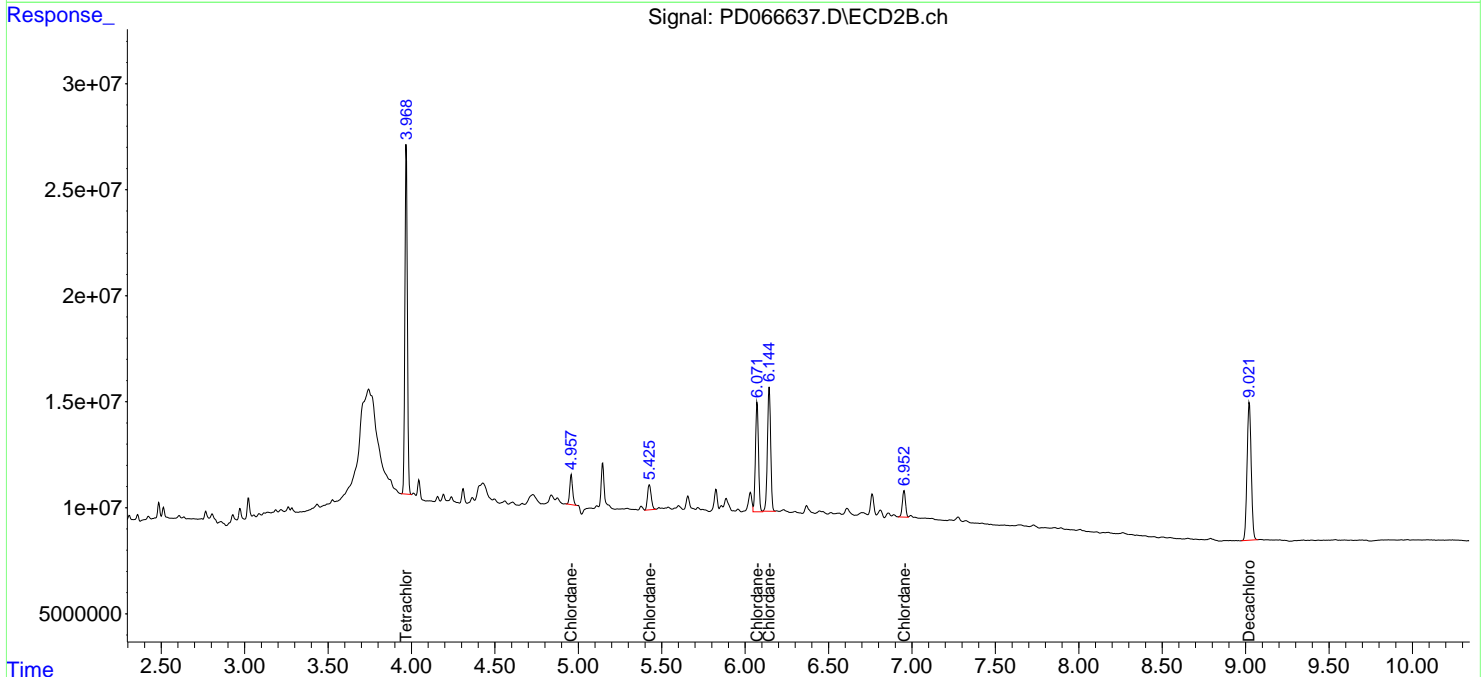
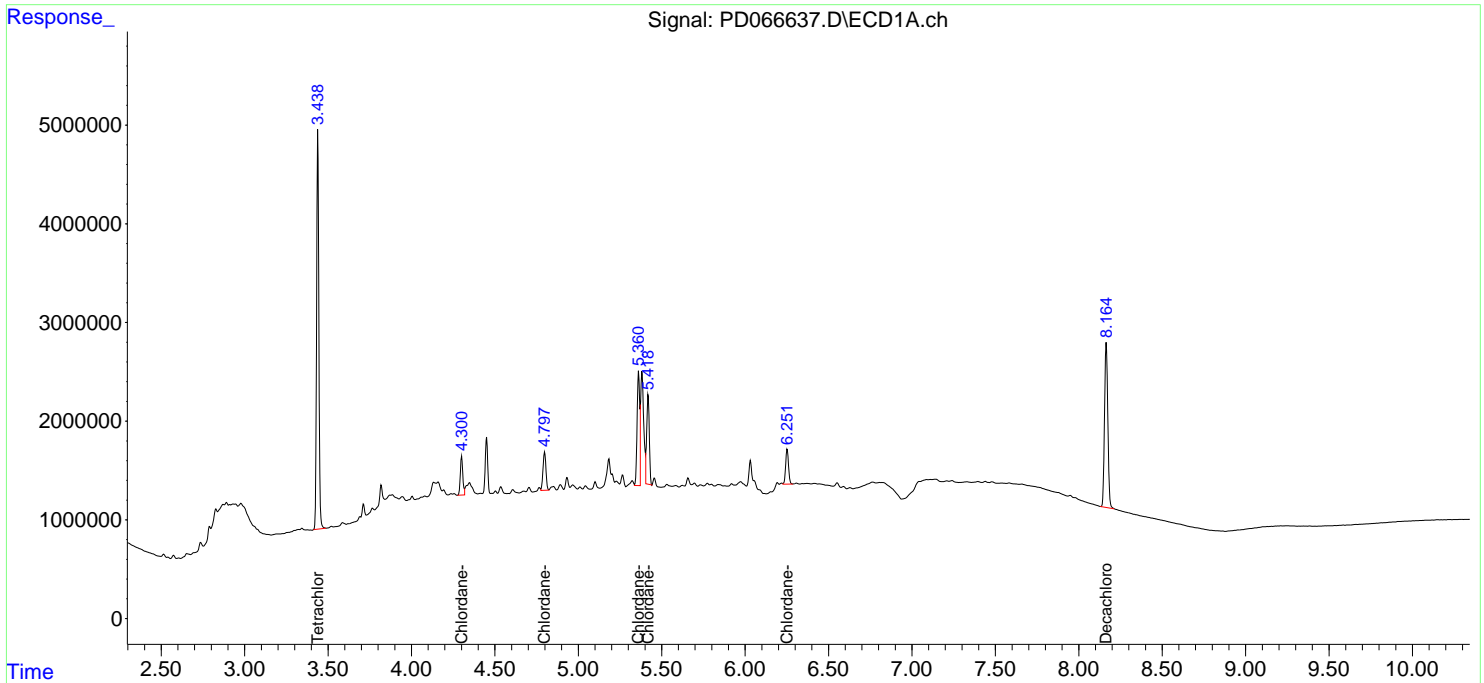
(f)=RT Delta > 1/2 Window (#)=Amounts differ by > 25% (m)=manual int.

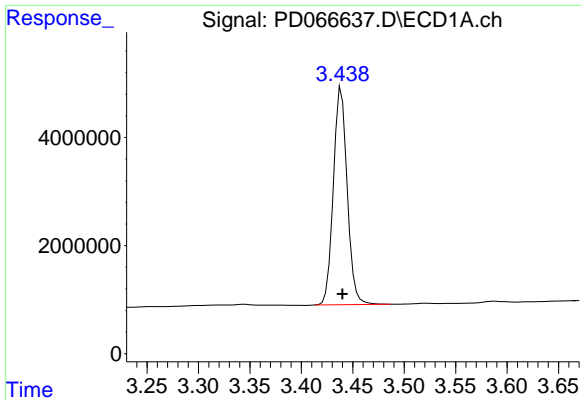
Data Path : Z:\pestpcbsrv\HPCHEM1\ECD\_D\Data\PD103021\  
 Data File : PD066637.D  
 Signal(s) : Signal #1: ECD1A.ch Signal #2: ECD2B.ch  
 Acq On : 29 Oct 2021 12:56  
 Operator : AR\AJ  
 Sample : M4068-02  
 Misc : (Sig #1); CHLOR LOQ 50 PPB (Sig #2)  
 ALS Vial : 16 Sample Multiplier: 1

**Instrument :**  
 ECD\_D  
**ClientSampleId :**  
 LOQ-SOIL-02-QT4-2021

Integration File signal 1: autoint1.e  
 Integration File signal 2: autoint2.e  
 Quant Time: Nov 01 06:24:55 2021  
 Quant Method : Z:\pestpcbsrv\HPCHEM1\ECD\_D\Method\PD102821.M  
 Quant Title : GC Extractables  
 QLast Update : Thu Oct 28 02:17:57 2021  
 Response via : Initial Calibration  
 Integrator: ChemStation

Volume Inj. : 2 µl  
 Signal #1 Phase : ZB-MR2 Signal #2 Phase: ZB-MR1  
 Signal #1 Info : 30M x 0.32mm x0.2 Signal #2 Info : 30M x 0.32mm x 0.50µm

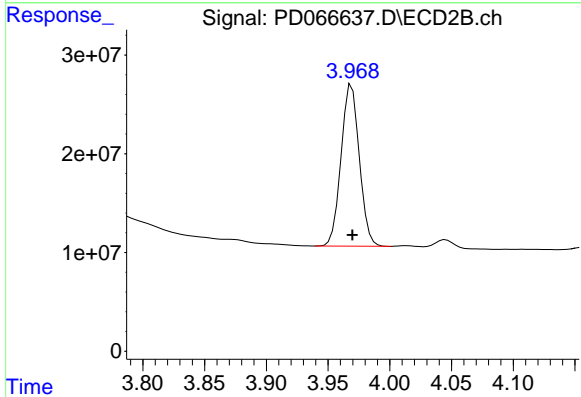




#1 Tetrachloro-m-xylene

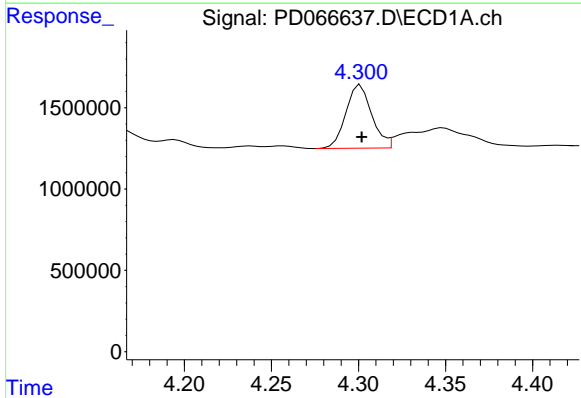
R.T.: 3.439 min  
 Delta R.T.: -0.001 min  
 Response: 37644237  
 Conc: 20.18 ng/ml

Instrument :  
 ECD\_D  
 ClientSampleId :  
 LOQ-SOIL-02-QT4-2021



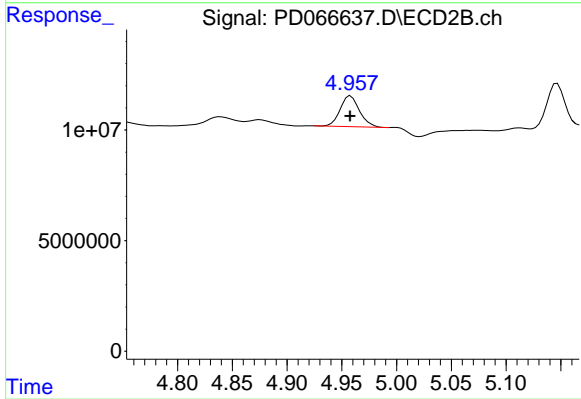
#1 Tetrachloro-m-xylene

R.T.: 3.969 min  
 Delta R.T.: 0.000 min  
 Response: 168434293  
 Conc: 20.81 ng/ml



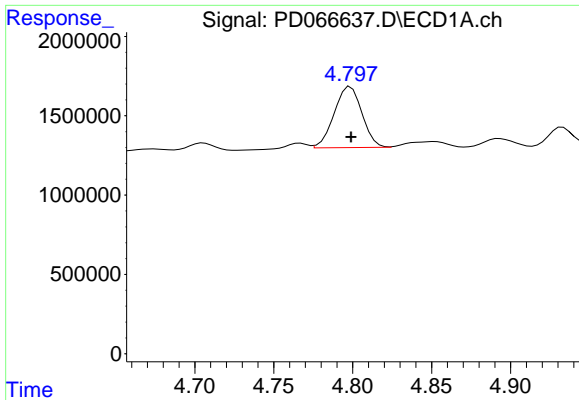
#23 Chlordane-1

R.T.: 4.301 min  
 Delta R.T.: 0.000 min  
 Response: 4015902  
 Conc: 54.27 ng/ml



#23 Chlordane-1

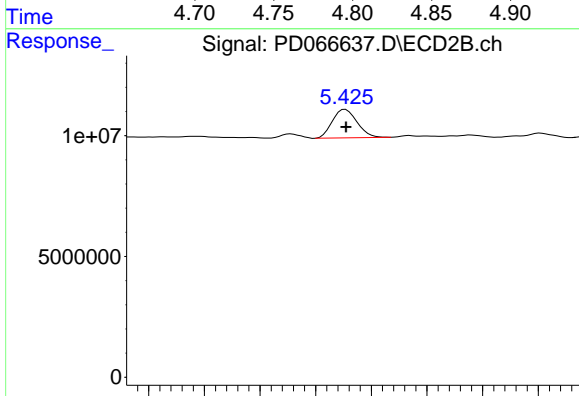
R.T.: 4.958 min  
 Delta R.T.: 0.000 min  
 Response: 17078320  
 Conc: 61.51 ng/ml



#24 Chlordane-2

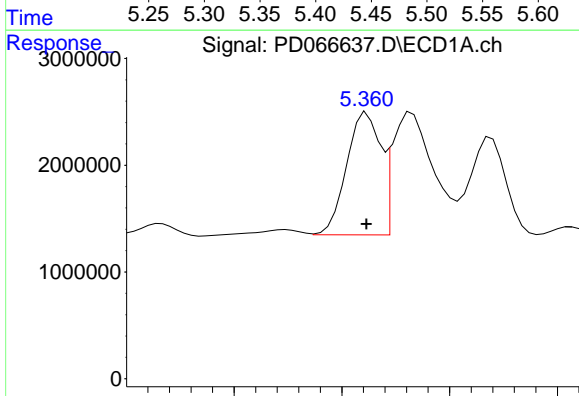
R.T.: 4.799 min  
 Delta R.T.: 0.000 min  
 Response: 4710643  
 Conc: 55.53 ng/ml

Instrument :  
 ECD\_D  
 ClientSampleId :  
 LOQ-SOIL-02-QT4-2021



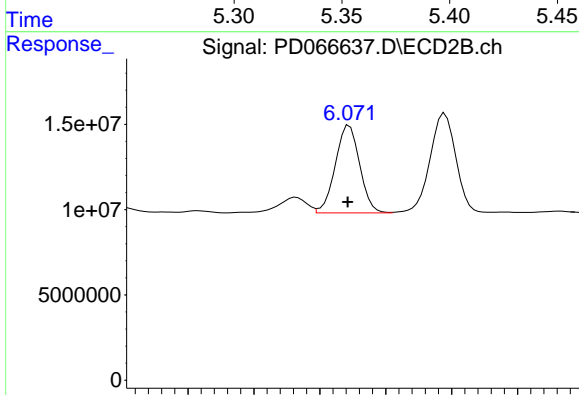
#24 Chlordane-2

R.T.: 5.427 min  
 Delta R.T.: 0.000 min  
 Response: 18205111  
 Conc: 61.38 ng/ml



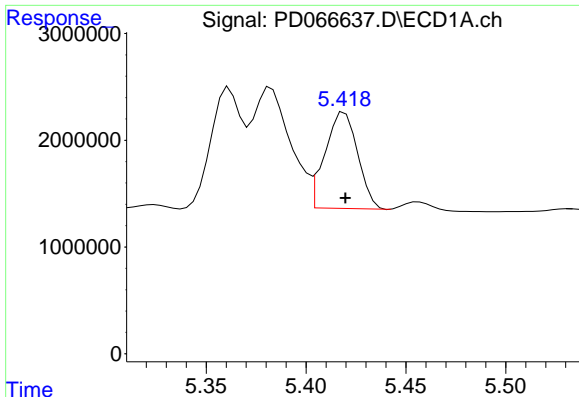
#25 Chlordane-3

R.T.: 5.360 min  
 Delta R.T.: -0.001 min  
 Response: 12785223  
 Conc: 52.22 ng/ml m



#25 Chlordane-3

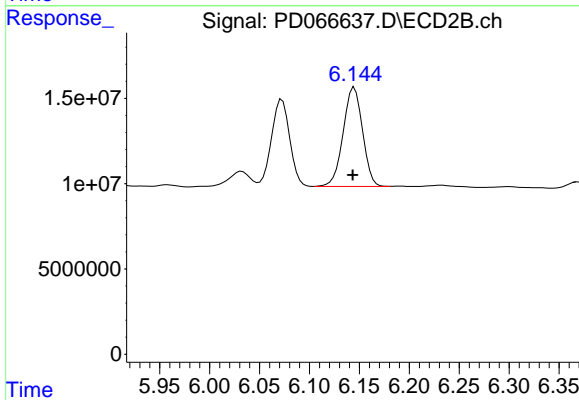
R.T.: 6.071 min  
 Delta R.T.: 0.000 min  
 Response: 65672765  
 Conc: 60.91 ng/ml m



#26 Chlordane-4

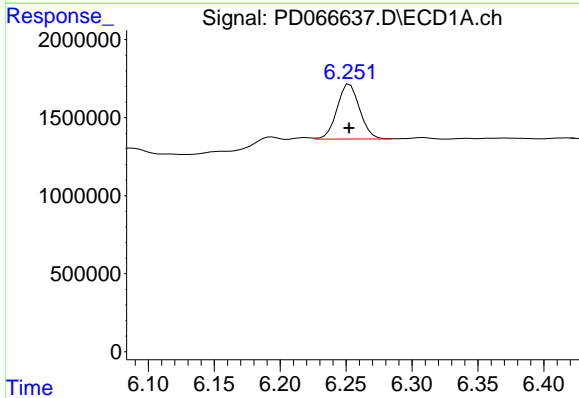
R.T.: 5.419 min  
 Delta R.T.: 0.000 min  
 Response: 10282463  
 Conc: 50.48 ng/ml

Instrument :  
 ECD\_D  
 ClientSampleId :  
 LOQ-SOIL-02-QT4-2021



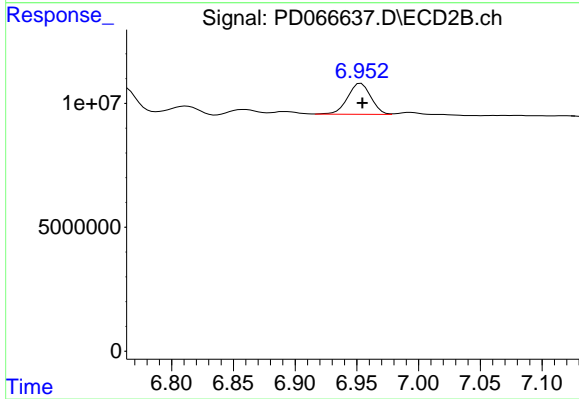
#26 Chlordane-4

R.T.: 6.145 min  
 Delta R.T.: 0.001 min  
 Response: 78589842  
 Conc: 62.36 ng/ml



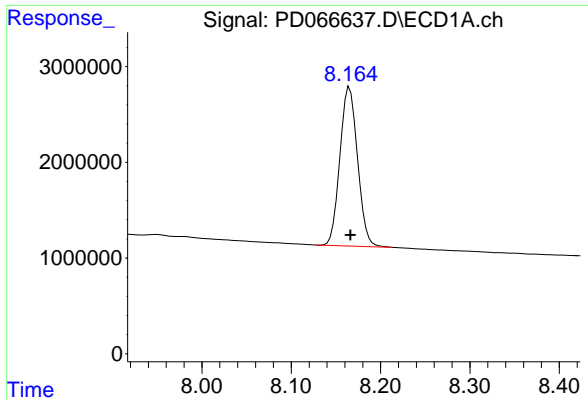
#27 Chlordane-5

R.T.: 6.251 min  
 Delta R.T.: 0.000 min  
 Response: 4202288  
 Conc: 49.69 ng/ml m



#27 Chlordane-5

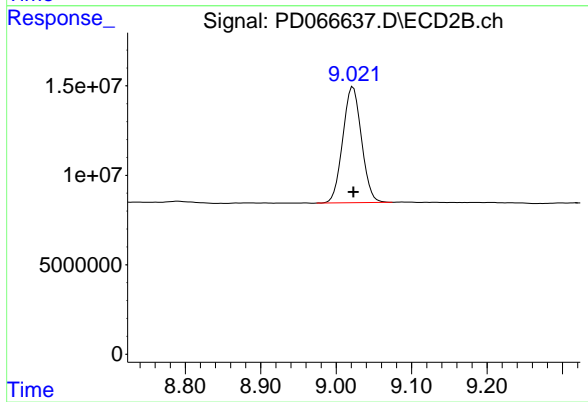
R.T.: 6.952 min  
 Delta R.T.: -0.003 min  
 Response: 16388743  
 Conc: 60.13 ng/ml m



#28 Decachlorobiphenyl

R.T.: 8.165 min  
Delta R.T.: -0.001 min  
Response: 22765840  
Conc: 19.70 ng/ml

Instrument :  
ECD\_D  
ClientSampleId :  
LOQ-SOIL-02-QT4-2021



#28 Decachlorobiphenyl

R.T.: 9.022 min  
Delta R.T.: 0.000 min  
Response: 111651168  
Conc: 20.73 ng/ml