

Data Path : Z:\pestpcbsrv\HPCHEM1\ECD_D\Data\PD103119\
 Data File : PD055699.D
 Signal(s) : Signal #1: ECD1A.ch Signal #2: ECD2B.ch
 Acq On : 30 Oct 2019 17:49
 Operator : SG\AJ
 Sample : TOXAPH401
 Misc :
 ALS Vial : 7 Sample Multiplier: 1

Instrument :
 ECD_D
 ClientSampleId :
 TOXAPH401

Integration File signal 1: autoint1.e
 Integration File signal 2: autoint2.e
 Quant Time: Oct 31 06:35:48 2019
 Quant Method : Z:\pestpcbsrv\HPCHEM1\ECD_D\Method\PD103119CLP.M
 Quant Title : GC Extractables
 QLast Update : Thu Oct 31 06:34:34 2019
 Response via : Initial Calibration
 Integrator: ChemStation

Volume Inj. : 1 µl
 Signal #1 Phase : ZB-MR2 Signal #2 Phase: ZB-MR1
 Signal #1 Info : 30M x 0.32mm x0.2 Signal #2 Info : 30M x 0.32mm x 0.50µm

Compound	RT#1	RT#2	Resp#1	Resp#2	ng/ml	ng/ml

System Monitoring Compounds						
1) SA Tetrachlo...	3.289	3.962	40206738	55635666	39.685	39.854
27) SA Decachlor...	7.963	8.996	84943793	118.0E6	77.509	76.808
Target Compounds						
22) Toxaphene-1	5.489	6.336	37610510	47624843	4051.781	4145.207
23) Toxaphene-2	5.643	6.625	39818403	56859346	4048.098	4033.038
24) Toxaphene-3	5.964	7.030	34407720	87093199	3927.709	4050.185
25) Toxaphene-4	6.082	7.106	106.5E6	243.2E6	4129.982	4063.989
26) Toxaphene-5	6.806	7.604	130.4E6	117.3E6	4147.228	4027.200

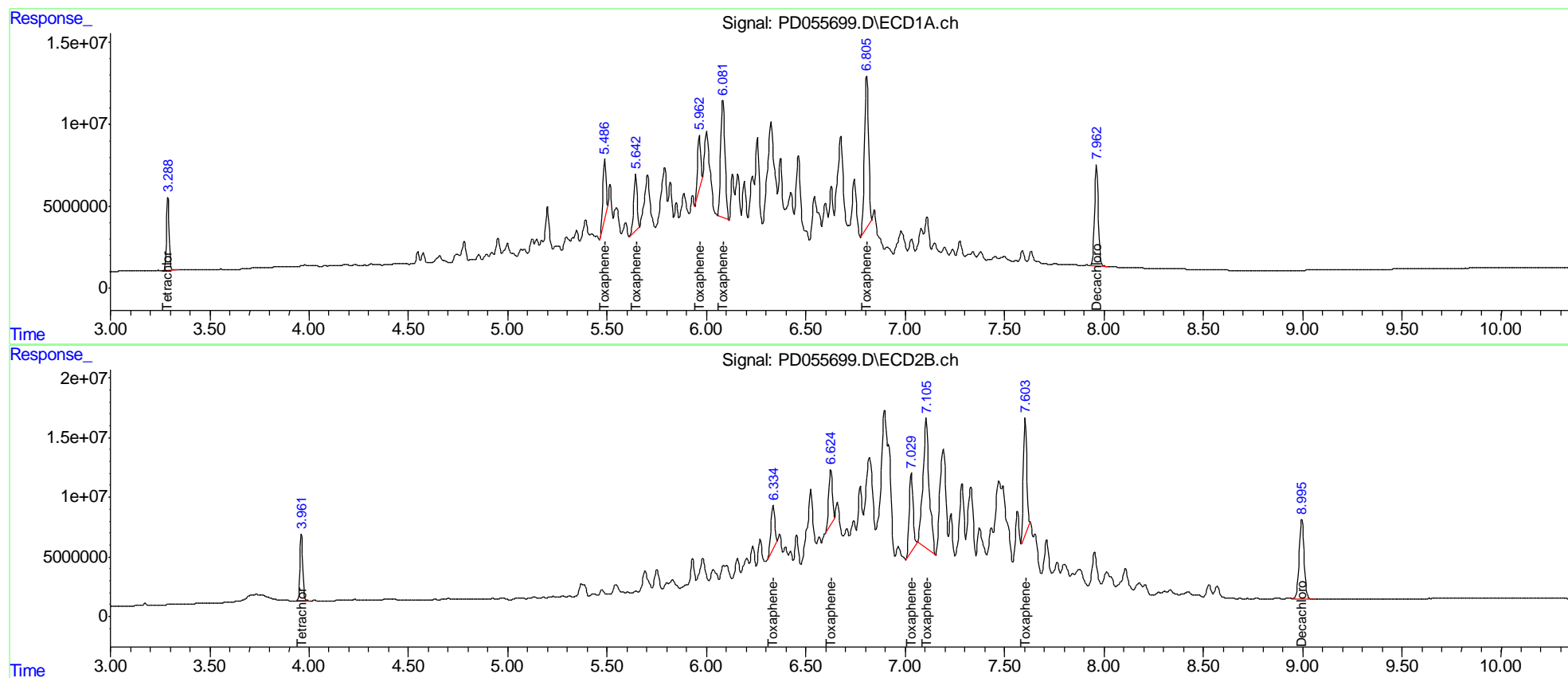
(f)=RT Delta > 1/2 Window (#)=Amounts differ by > 25% (m)=manual int.

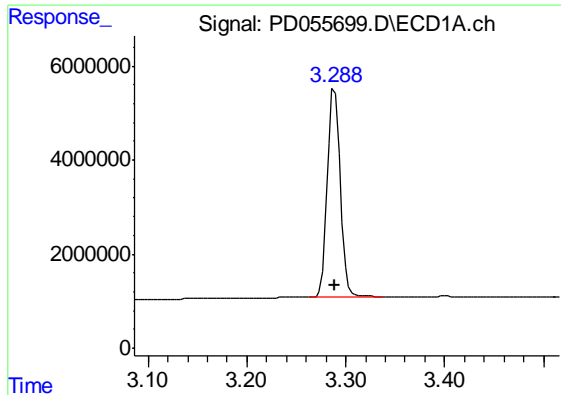
Data Path : Z:\pestpcbsrv\HPCHEM1\ECD_D\Data\PD103119\
 Data File : PD055699.D
 Signal(s) : Signal #1: ECD1A.ch Signal #2: ECD2B.ch
 Acq On : 30 Oct 2019 17:49
 Operator : SG\AJ
 Sample : TOXAPH401
 Misc :
 ALS Vial : 7 Sample Multiplier: 1

Instrument :
 ECD_D
 ClientSampled :
 TOXAPH401

Integration File signal 1: autoint1.e
 Integration File signal 2: autoint2.e
 Quant Time: Oct 31 06:35:48 2019
 Quant Method : Z:\pestpcbsrv\HPCHEM1\ECD_D\Method\PD103119CLP.M
 Quant Title : GC Extractables
 QLast Update : Thu Oct 31 06:34:34 2019
 Response via : Initial Calibration
 Integrator: ChemStation

Volume Inj. : 1 µl
 Signal #1 Phase : ZB-MR2 Signal #2 Phase: ZB-MR1
 Signal #1 Info : 30M x 0.32mm x0.2 Signal #2 Info : 30M x 0.32mm x 0.50µm

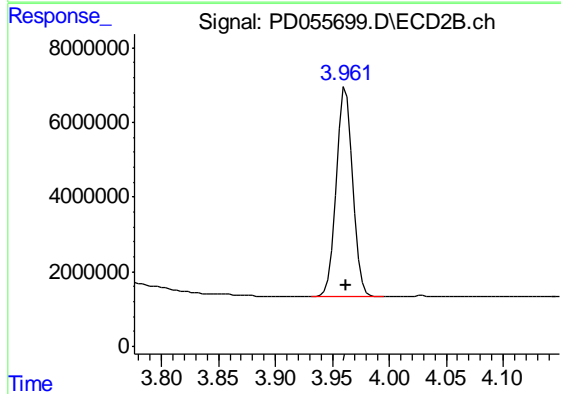




#1 Tetrachloro-m-xylene

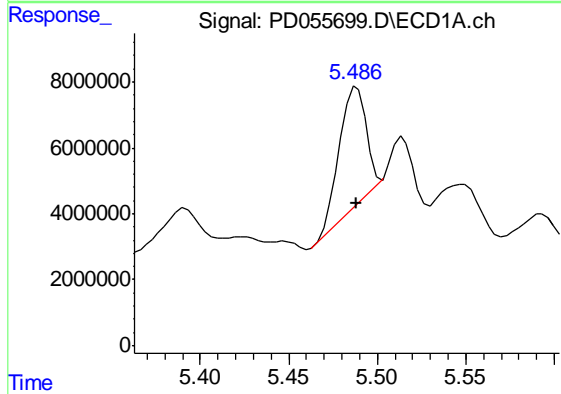
R.T.: 3.289 min
 Delta R.T.: 0.000 min
 Response: 40206738
 Conc: 39.69 ng/ml

Instrument :
 ECD_D
 ClientSampleId :
 TOXAPH401



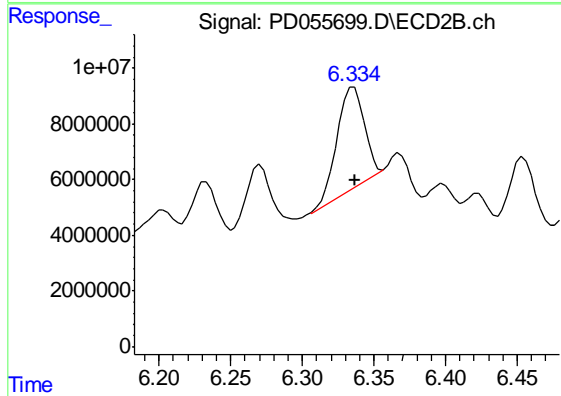
#1 Tetrachloro-m-xylene

R.T.: 3.962 min
 Delta R.T.: 0.000 min
 Response: 55635666
 Conc: 39.85 ng/ml



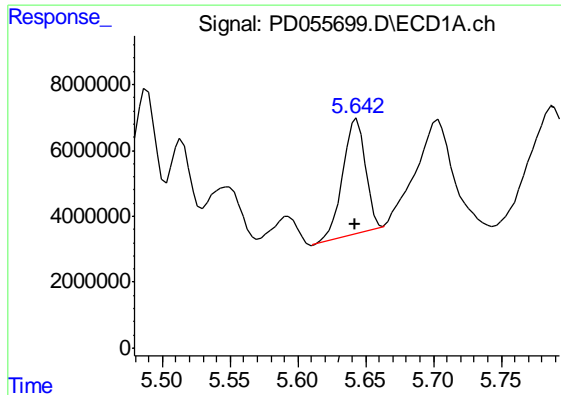
#22 Toxaphene-1

R.T.: 5.489 min
 Delta R.T.: 0.000 min
 Response: 37610510
 Conc: 4051.78 ng/ml



#22 Toxaphene-1

R.T.: 6.336 min
 Delta R.T.: -0.001 min
 Response: 47624843
 Conc: 4145.21 ng/ml



#23 Toxaphene-2

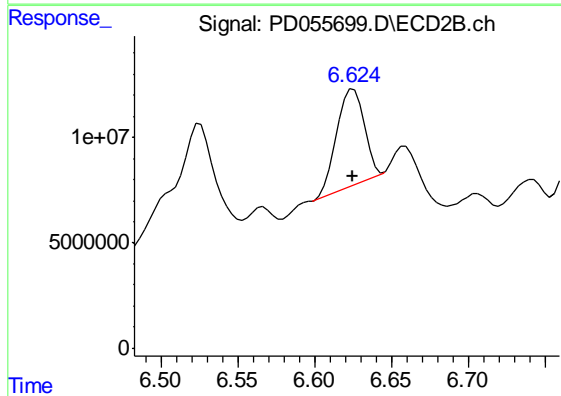
R.T.: 5.643 min

Delta R.T.: 0.000 min

Response: 39818403

Conc: 4048.10 ng/ml

Instrument :
ECD_D
ClientSampleId :
TOXAPH401



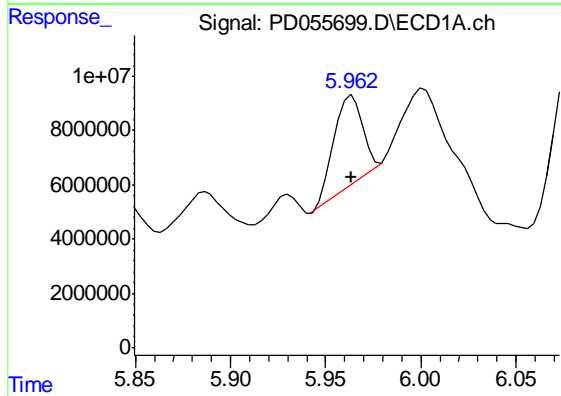
#23 Toxaphene-2

R.T.: 6.625 min

Delta R.T.: 0.000 min

Response: 56859346

Conc: 4033.04 ng/ml



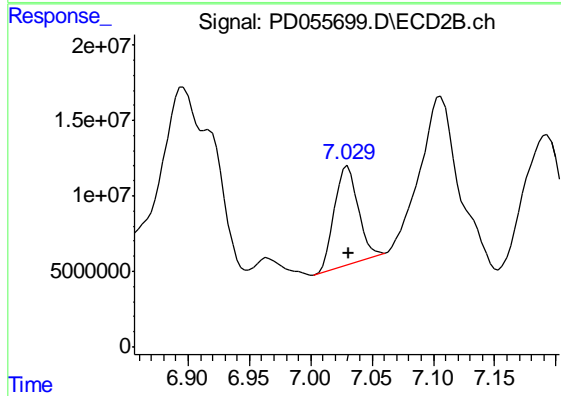
#24 Toxaphene-3

R.T.: 5.964 min

Delta R.T.: 0.000 min

Response: 34407720

Conc: 3927.71 ng/ml



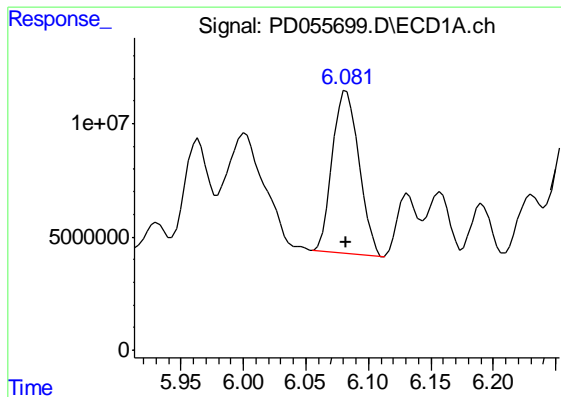
#24 Toxaphene-3

R.T.: 7.030 min

Delta R.T.: 0.000 min

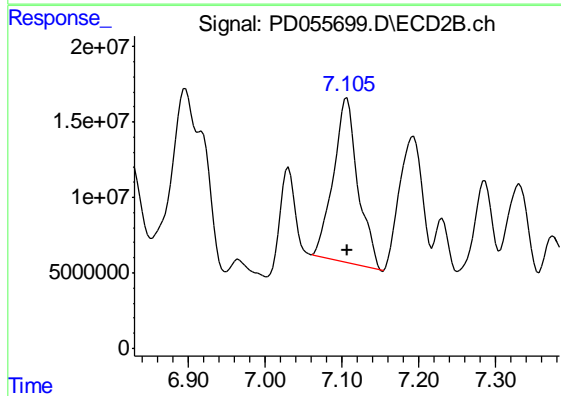
Response: 87093199

Conc: 4050.19 ng/ml

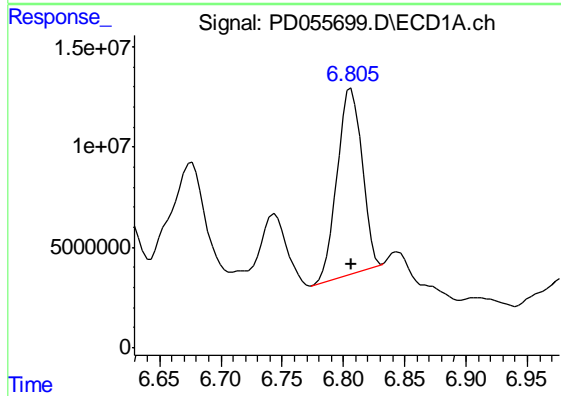


#25 Toxaphene-4
 R.T.: 6.082 min
 Delta R.T.: 0.000 min
 Response: 106453935
 Conc: 4129.98 ng/ml

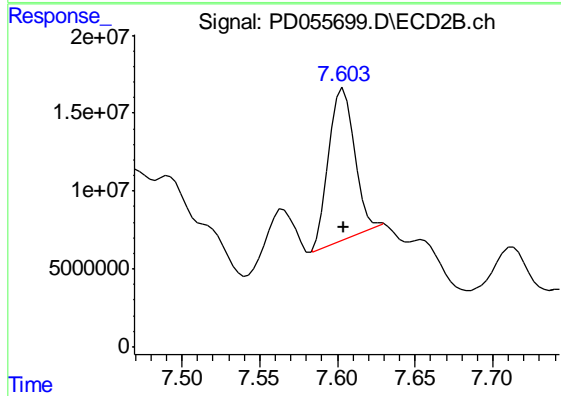
Instrument :
 ECD_D
 ClientSampled :
 TOXAPH401



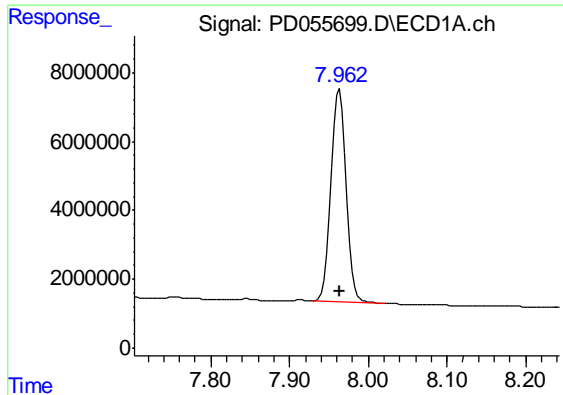
#25 Toxaphene-4
 R.T.: 7.106 min
 Delta R.T.: 0.000 min
 Response: 243185346
 Conc: 4063.99 ng/ml



#26 Toxaphene-5
 R.T.: 6.806 min
 Delta R.T.: 0.000 min
 Response: 130386210
 Conc: 4147.23 ng/ml



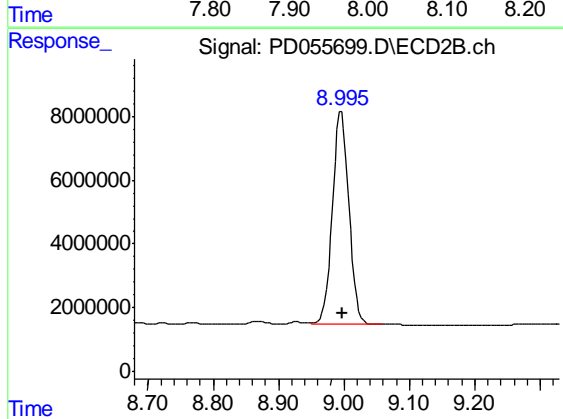
#26 Toxaphene-5
 R.T.: 7.604 min
 Delta R.T.: 0.000 min
 Response: 117335090
 Conc: 4027.20 ng/ml



#27 Decachlorobiphenyl

R.T.: 7.963 min
Delta R.T.: 0.000 min
Response: 84943793
Conc: 77.51 ng/ml

Instrument :
ECD_D
ClientSampleId :
TOXAPH401



#27 Decachlorobiphenyl

R.T.: 8.996 min
Delta R.T.: 0.000 min
Response: 118041456
Conc: 76.81 ng/ml