

Data Path : Z:\pestpcbsrv\HPCHEM1\ECD_D\Data\PD110118\
 Data File : PD050140.D
 Signal(s) : Signal #1: ECD1A.CH Signal #2: ECD2B.CH
 Acq On : 01 Nov 2018 15:46
 Operator : AJ\SJ
 Sample : J5755-07
 Misc :
 ALS Vial : 10 Sample Multiplier: 1

Integration File signal 1: autoint1.e
 Integration File signal 2: autoint2.e
 Quant Time: Nov 02 04:05:28 2018
 Quant Method : Z:\pestpcbsrv\HPCHEM1\ECD_D\Method\PD103018.M
 Quant Title : GC Extractables
 QLast Update : Tue Oct 30 03:08:01 2018
 Response via : Initial Calibration
 Integrator: ChemStation 6890 Scale Mode: Large solvent peaks clipped

Volume Inj. : 2 µl
 Signal #1 Phase : ZB-MR2 Signal #2 Phase: ZB-MR1
 Signal #1 Info : 30M x 0.32mm x0.2 Signal #2 Info : 30M x 0.32mm x 0.50µm

Compound	RT#1	RT#2	Resp#1	Resp#2	ng/ml	ng/ml

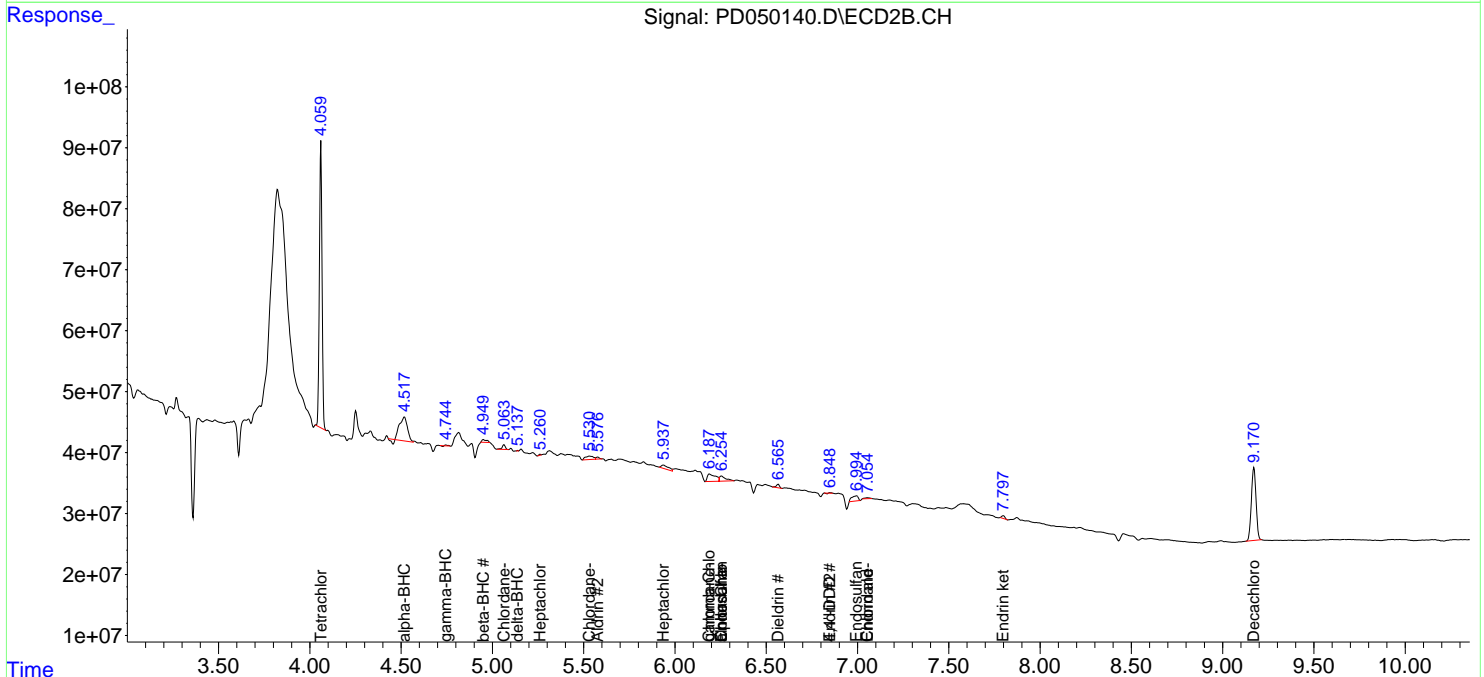
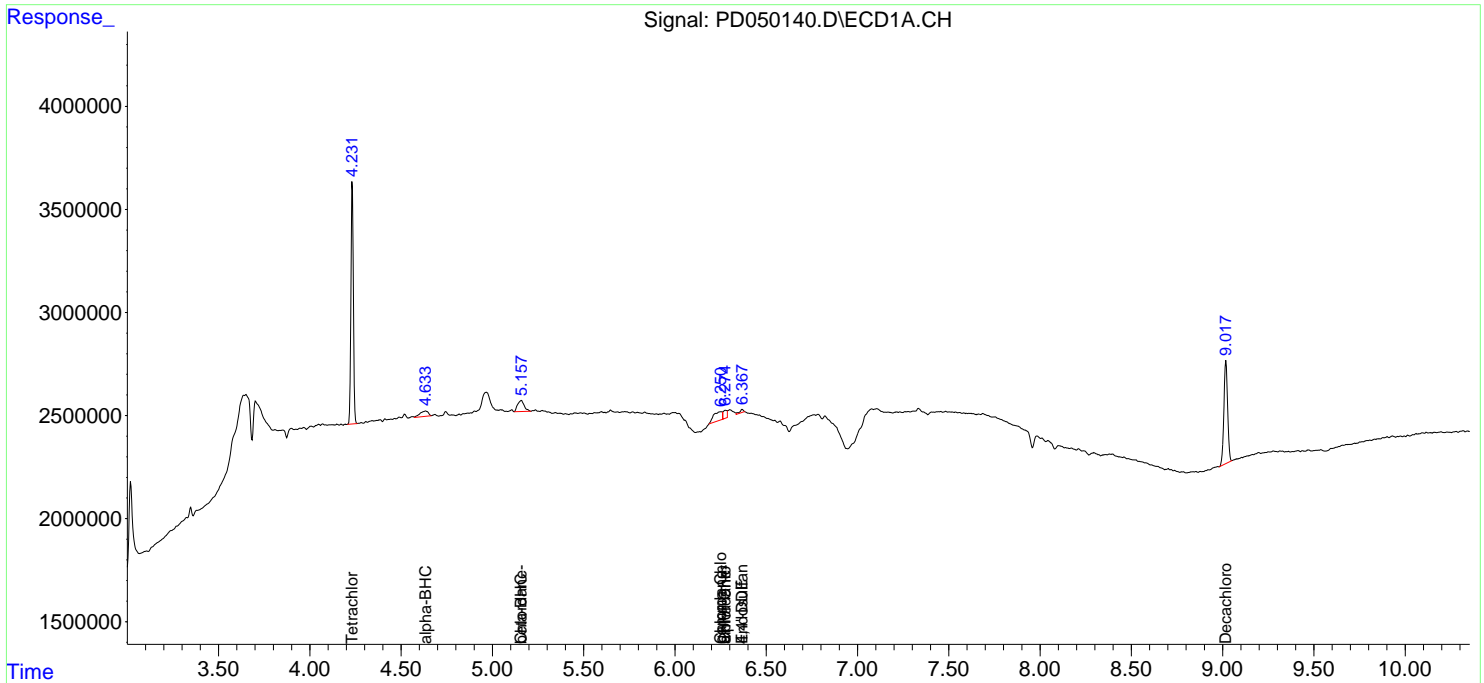
System Monitoring Compounds						
1) SA Tetrachlo...	4.233	4.061	11032697	475.4E6	17.599	17.071
28) SA Decachlor...	9.018	9.172	7103322	213.2E6	11.817	12.406
Target Compounds						
2) A alpha-BHC	4.635f	4.518f	828176	113.9E6	0.871	2.600 #
3) MA gamma-BHC...	0.000	4.745	0	825029	N.D.	0.021 #
4) MA Heptachlor	0.000	5.262	0	1004262	N.D.	0.027 #
5) MB Aldrin	0.000	5.578	0	3652658	N.D.	0.102 #
6) B beta-BHC	5.159f	4.951f	1354227	8279015	3.576	0.518 #
7) B delta-BHC	0.000	5.138	0	395123	N.D.	0.010 #
8) B Heptachlo...	0.000	5.937	0	16589193	N.D.	0.522 #
9) A Endosulfan I	6.369	6.256f	261534	20010457	0.350	0.708 #
10) B gamma-Chl...	6.253f	6.188	1381286	37672723	1.671	1.162 #
11) B alpha-Chl...	6.277	6.256	567063	20010457	0.692	0.646
12) B 4,4'-DDE	6.369f	0.000	261534	0	0.342	N.D. #
13) MA Dieldrin	0.000	6.566	0	6722434	N.D.	0.222 #
14) MA Endrin	0.000	6.850f	0	142447	N.D.	0.006 #
15) B Endosulfa...	0.000	6.995	0	21098235	N.D.	0.873 #
16) A 4,4'-DDD	0.000	6.850f	0	142447	N.D.	0.006 #
18) B Endrin al...	0.000	7.055f	0	3092705	N.D.	0.160 #
23) Chlordane-1	5.159	5.064	1354227	9240189	46.197	6.627 #
24) Chlordane-2	0.000	5.531	0	16727724	N.D.	13.605 #
25) Chlordane-3	6.253	6.188	1381286	37672723	15.739	9.033 #
26) Chlordane-4	6.277	6.256	567063	20010457	7.827	4.270 #
27) Chlordane-5	0.000	7.055	0	3092705	N.D.	3.338 #

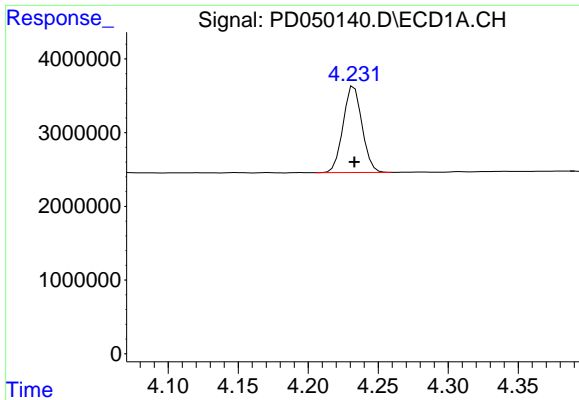
(f)=RT Delta > 1/2 Window (#)=Amounts differ by > 25% (m)=manual int.

Data Path : Z:\pestpcbsrv\HPCHEM1\ECD_D\Data\PD110118\
 Data File : PD050140.D
 Signal(s) : Signal #1: ECD1A.CH Signal #2: ECD2B.CH
 Acq On : 01 Nov 2018 15:46
 Operator : AJ\SJ
 Sample : J5755-07
 Misc :
 ALS Vial : 10 Sample Multiplier: 1

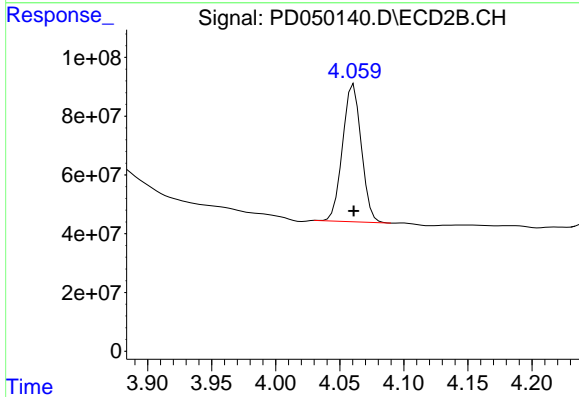
Integration File signal 1: autoint1.e
 Integration File signal 2: autoint2.e
 Quant Time: Nov 02 04:05:28 2018
 Quant Method : Z:\pestpcbsrv\HPCHEM1\ECD_D\Method\PD103018.M
 Quant Title : GC Extractables
 QLast Update : Tue Oct 30 03:08:01 2018
 Response via : Initial Calibration
 Integrator: ChemStation 6890 Scale Mode: Large solvent peaks clipped

Volume Inj. : 2 µl
 Signal #1 Phase : ZB-MR2 Signal #2 Phase: ZB-MR1
 Signal #1 Info : 30M x 0.32mm x0.2 Signal #2 Info : 30M x 0.32mm x 0.50µm

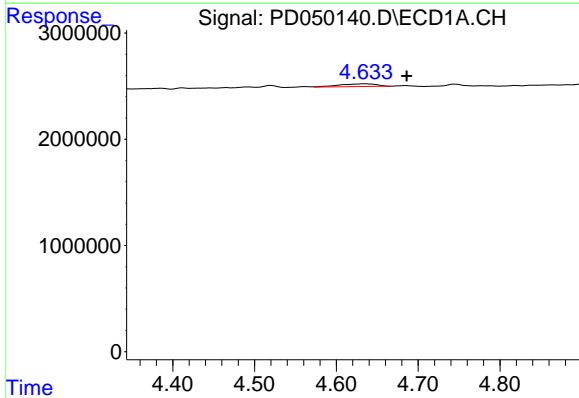




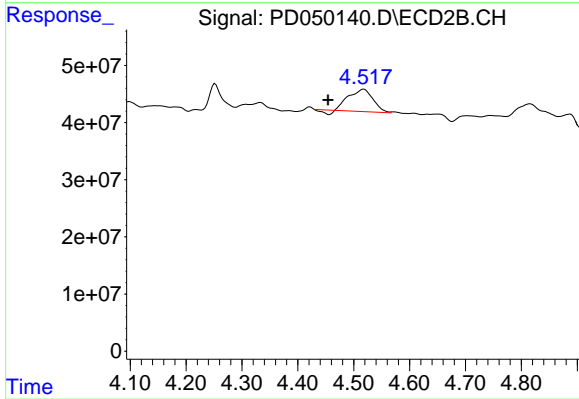
#1 Tetrachloro-m-xylene
 R.T.: 4.233 min
 Delta R.T.: 0.000 min
 Response: 11032697
 Conc: 17.60 ng/ml



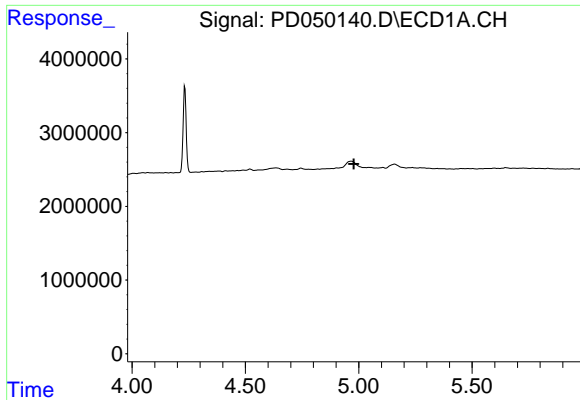
#1 Tetrachloro-m-xylene
 R.T.: 4.061 min
 Delta R.T.: 0.000 min
 Response: 475427916
 Conc: 17.07 ng/ml



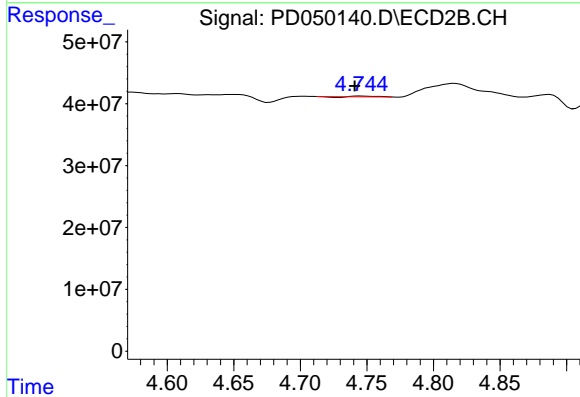
#2 alpha-BHC
 R.T.: 4.635 min
 Delta R.T.: -0.051 min
 Response: 828176
 Conc: 0.87 ng/ml



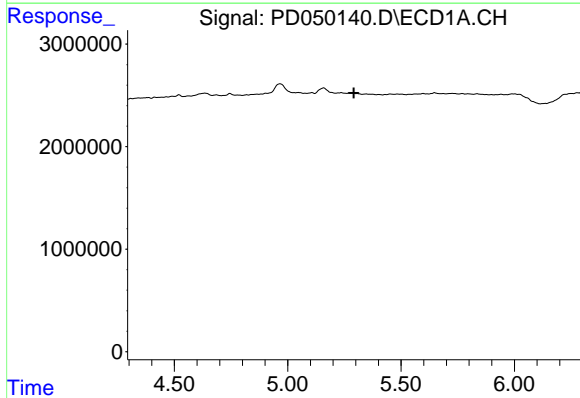
#2 alpha-BHC
 R.T.: 4.518 min
 Delta R.T.: 0.064 min
 Response: 113940987
 Conc: 2.60 ng/ml



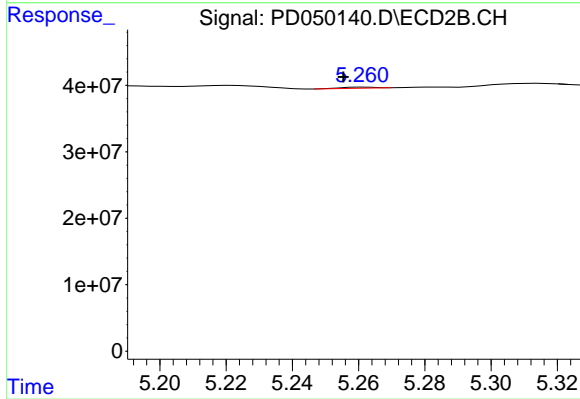
#3 gamma-BHC (Lindane)
 R.T.: 0.000 min
 Exp R.T. : 4.978 min
 Response: 0
 Conc: N.D.



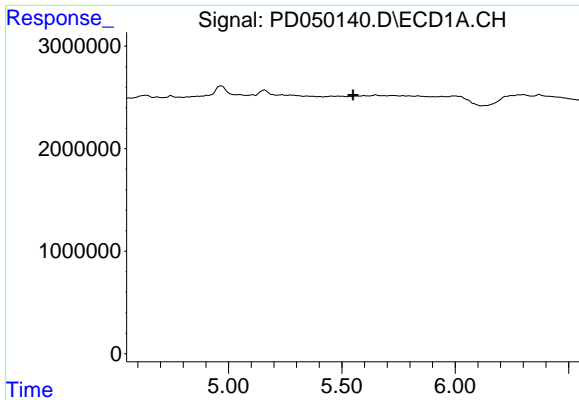
#3 gamma-BHC (Lindane)
 R.T.: 4.745 min
 Delta R.T.: 0.004 min
 Response: 825029
 Conc: 0.02 ng/ml



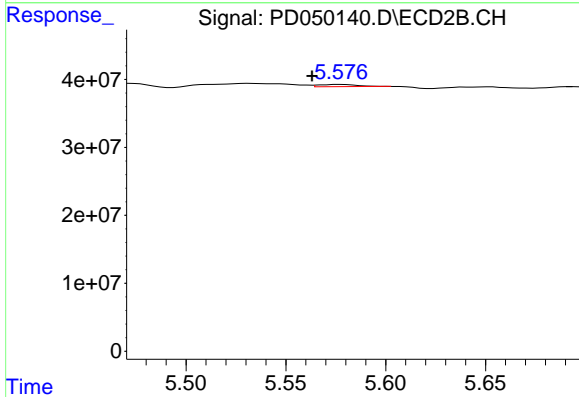
#4 Heptachlor
 R.T.: 0.000 min
 Exp R.T. : 5.291 min
 Response: 0
 Conc: N.D.



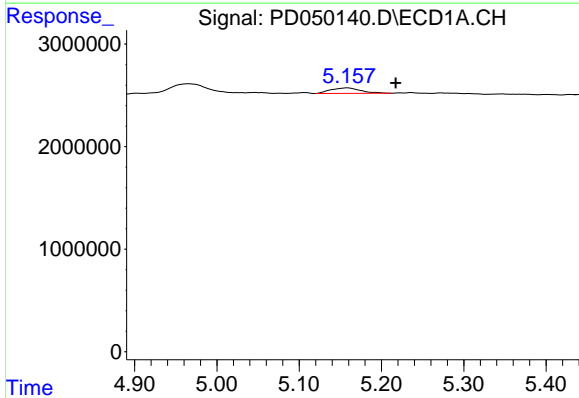
#4 Heptachlor
 R.T.: 5.262 min
 Delta R.T.: 0.006 min
 Response: 1004262
 Conc: 0.03 ng/ml



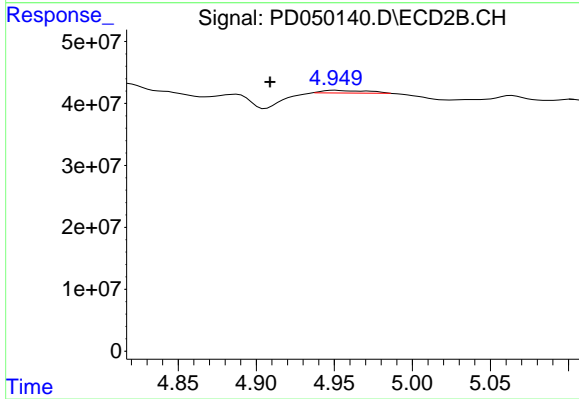
#5 Aldrin
 R.T.: 0.000 min
 Exp R.T.: 5.550 min
 Response: 0
 Conc: N.D.



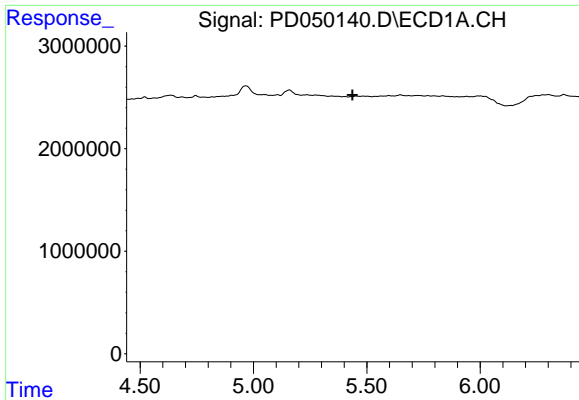
#5 Aldrin
 R.T.: 5.578 min
 Delta R.T.: 0.014 min
 Response: 3652658
 Conc: 0.10 ng/ml



#6 beta-BHC
 R.T.: 5.159 min
 Delta R.T.: -0.059 min
 Response: 1354227
 Conc: 3.58 ng/ml

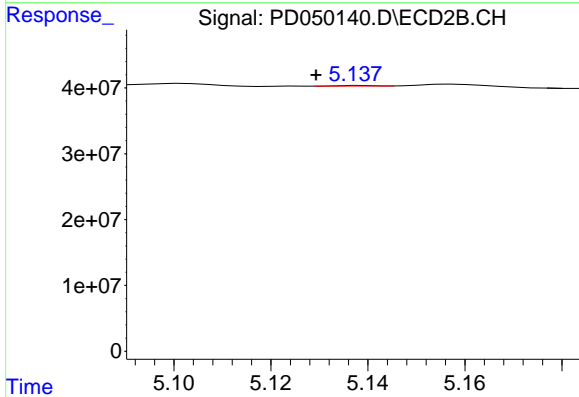


#6 beta-BHC
 R.T.: 4.951 min
 Delta R.T.: 0.042 min
 Response: 8279015
 Conc: 0.52 ng/ml



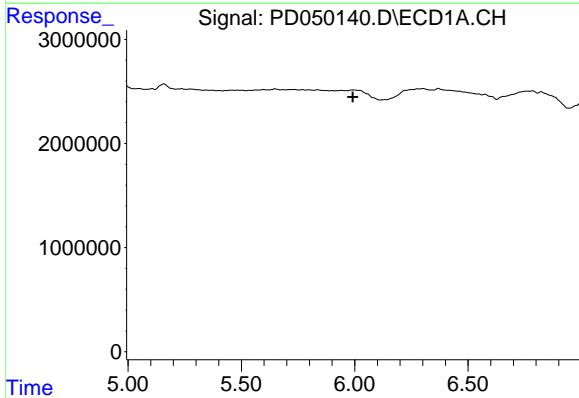
#7 delta-BHC

R.T.: 0.000 min
 Exp R.T. : 5.437 min
 Response: 0
 Conc: N.D.



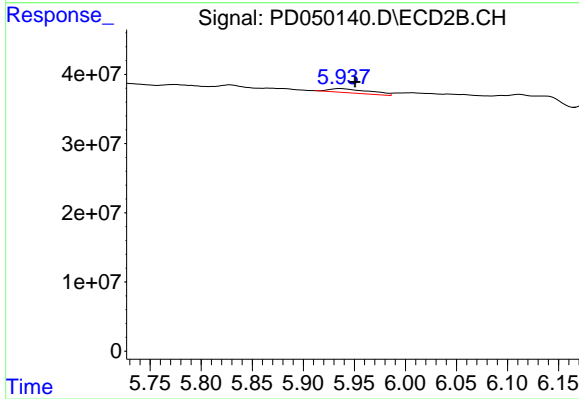
#7 delta-BHC

R.T.: 5.138 min
 Delta R.T.: 0.009 min
 Response: 395123
 Conc: 0.01 ng/ml



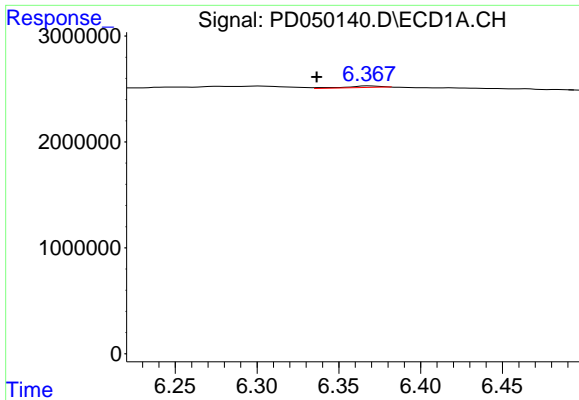
#8 Heptachlor epoxide

R.T.: 0.000 min
 Exp R.T. : 5.991 min
 Response: 0
 Conc: N.D.

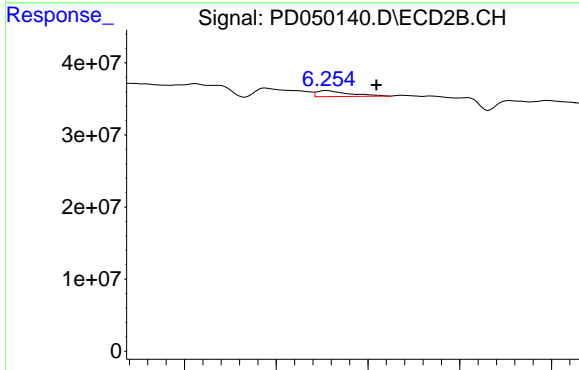


#8 Heptachlor epoxide

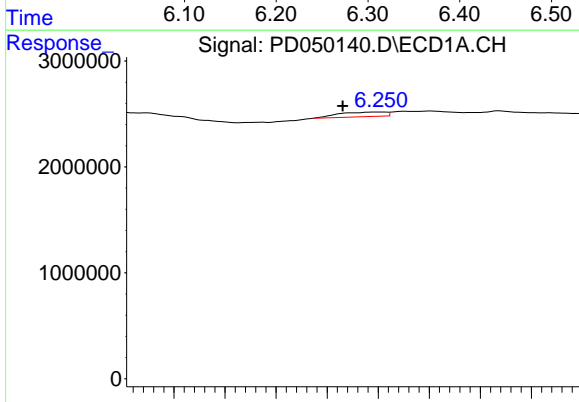
R.T.: 5.937 min
 Delta R.T.: -0.013 min
 Response: 16589193
 Conc: 0.52 ng/ml



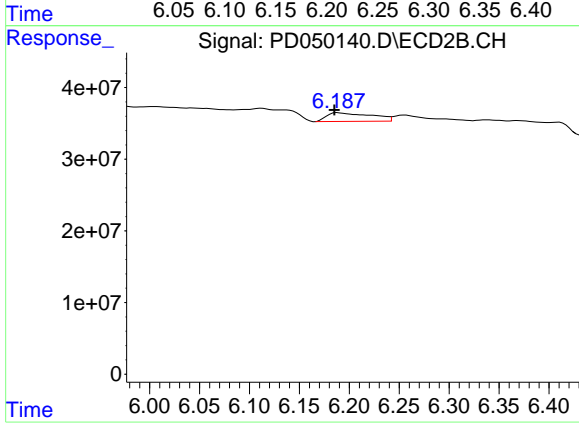
#9 Endosulfan I
 R.T.: 6.369 min
 Delta R.T.: 0.032 min
 Response: 261534
 Conc: 0.35 ng/ml



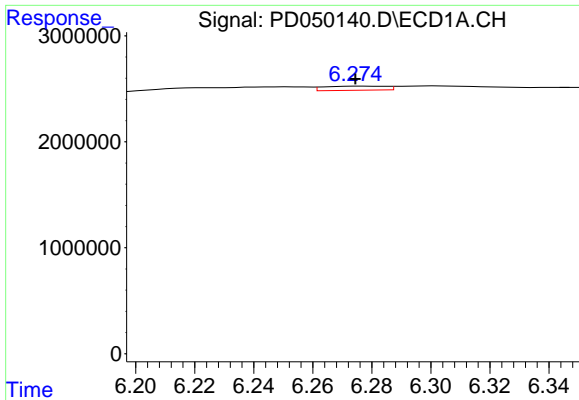
#9 Endosulfan I
 R.T.: 6.256 min
 Delta R.T.: -0.054 min
 Response: 20010457
 Conc: 0.71 ng/ml



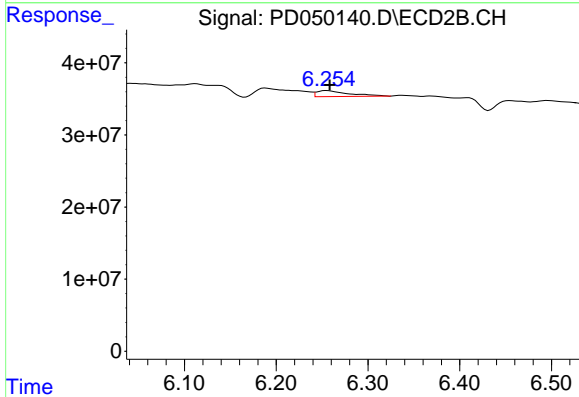
#10 gamma-Chlordane
 R.T.: 6.253 min
 Delta R.T.: 0.038 min
 Response: 1381286
 Conc: 1.67 ng/ml



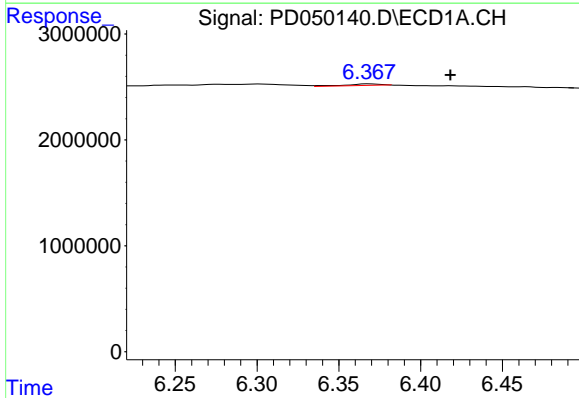
#10 gamma-Chlordane
 R.T.: 6.188 min
 Delta R.T.: 0.003 min
 Response: 37672723
 Conc: 1.16 ng/ml



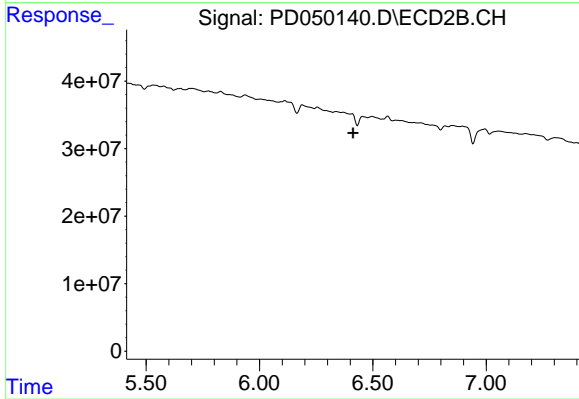
#11 alpha-Chlordane
 R.T.: 6.277 min
 Delta R.T.: 0.002 min
 Response: 567063
 Conc: 0.69 ng/ml



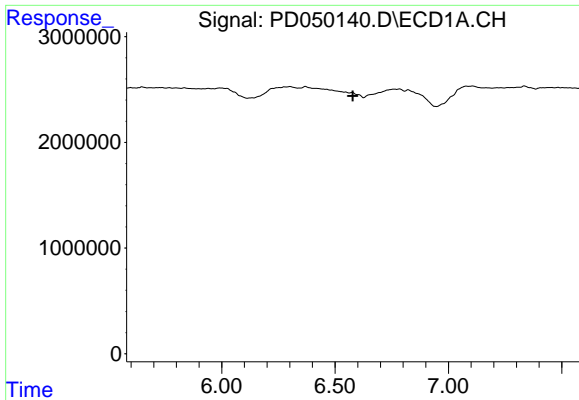
#11 alpha-Chlordane
 R.T.: 6.256 min
 Delta R.T.: -0.003 min
 Response: 20010457
 Conc: 0.65 ng/ml



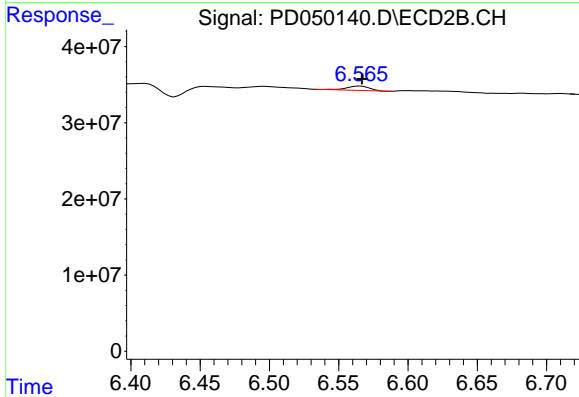
#12 4,4'-DDE
 R.T.: 6.369 min
 Delta R.T.: -0.049 min
 Response: 261534
 Conc: 0.34 ng/ml



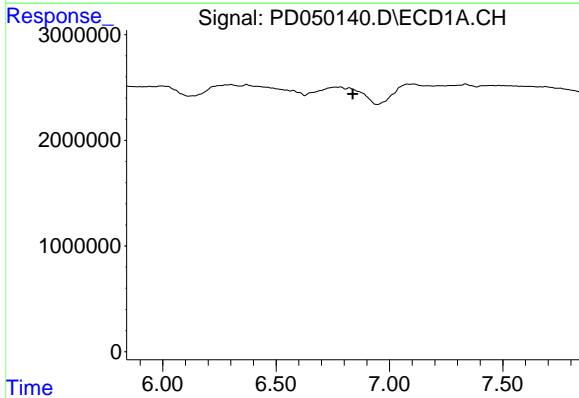
#12 4,4'-DDE
 R.T.: 0.000 min
 Exp R.T.: 6.413 min
 Response: 0
 Conc: N.D.



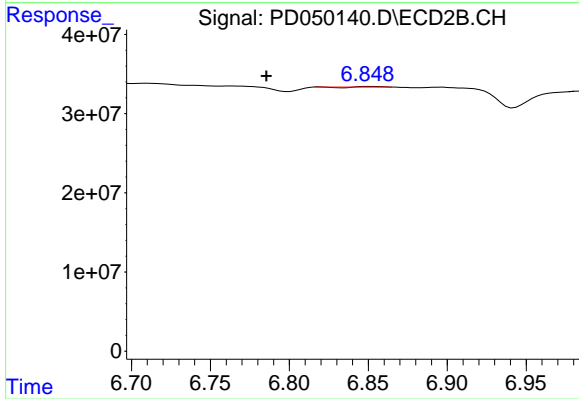
#13 Dieldrin
 R.T.: 0.000 min
 Exp R.T. : 6.578 min
 Response: 0
 Conc: N.D.



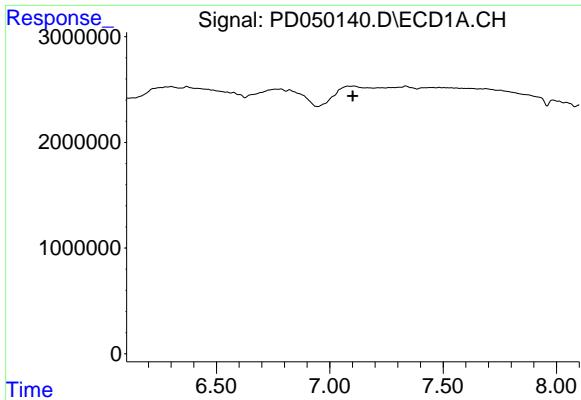
#13 Dieldrin
 R.T.: 6.566 min
 Delta R.T.: -0.001 min
 Response: 6722434
 Conc: 0.22 ng/ml



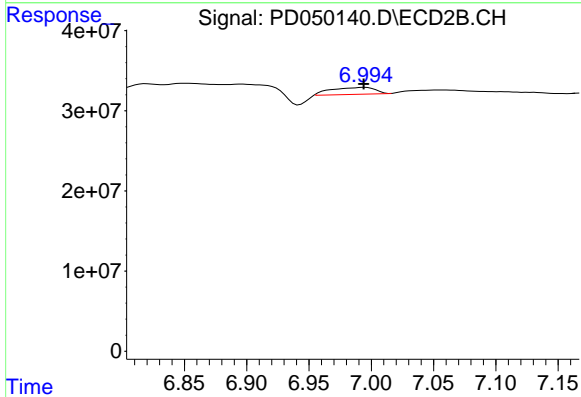
#14 Endrin
 R.T.: 0.000 min
 Exp R.T. : 6.838 min
 Response: 0
 Conc: N.D.



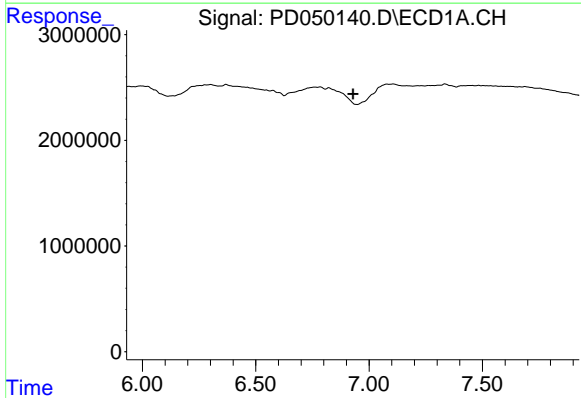
#14 Endrin
 R.T.: 6.850 min
 Delta R.T.: 0.065 min
 Response: 142447
 Conc: 0.01 ng/ml



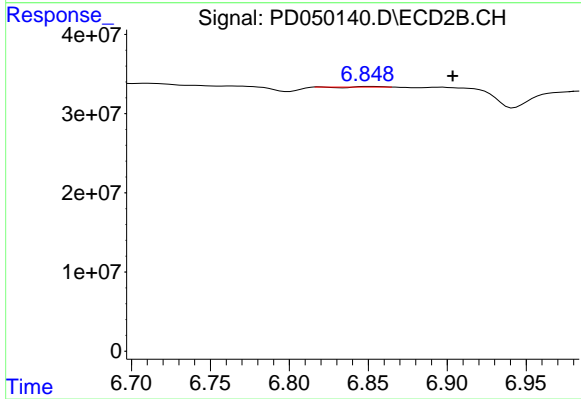
#15 Endosulfan II
 R.T.: 0.000 min
 Exp R.T. : 7.101 min
 Response: 0
 Conc: N.D.



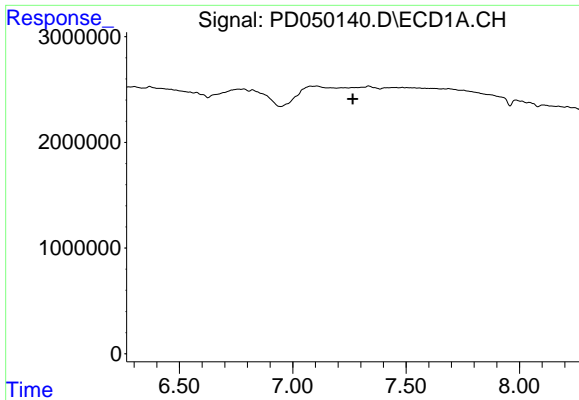
#15 Endosulfan II
 R.T.: 6.995 min
 Delta R.T.: 0.002 min
 Response: 21098235
 Conc: 0.87 ng/ml



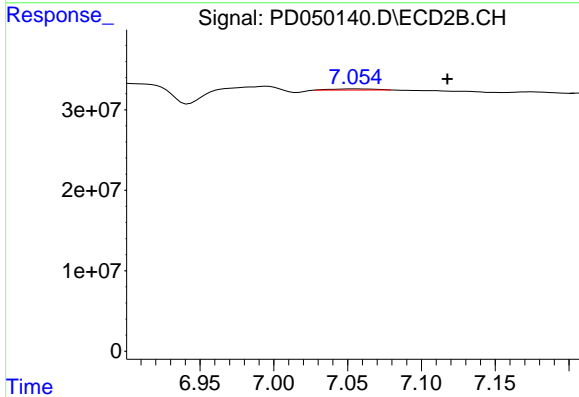
#16 4,4'-DDD
 R.T.: 0.000 min
 Exp R.T. : 6.929 min
 Response: 0
 Conc: N.D.



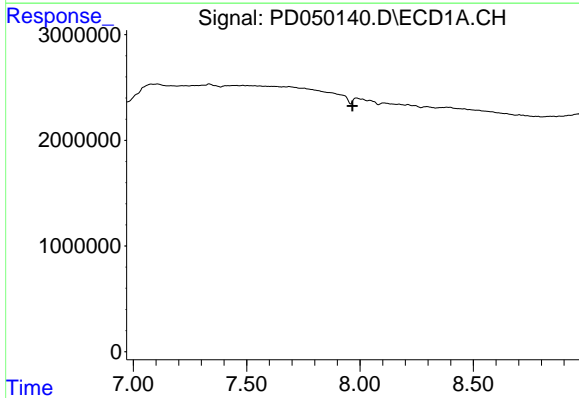
#16 4,4'-DDD
 R.T.: 6.850 min
 Delta R.T.: -0.053 min
 Response: 142447
 Conc: 0.01 ng/ml



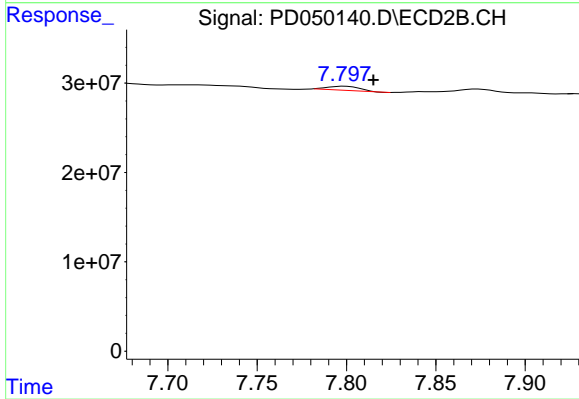
#18 Endrin aldehyde
 R.T.: 0.000 min
 Exp R.T.: 7.265 min
 Response: 0
 Conc: N.D.



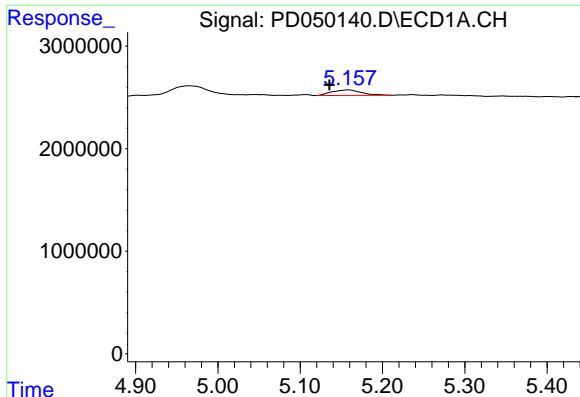
#18 Endrin aldehyde
 R.T.: 7.055 min
 Delta R.T.: -0.063 min
 Response: 3092705
 Conc: 0.16 ng/ml



#21 Endrin ketone
 R.T.: 7.983 min
 Delta R.T.: 0.016 min
 Response: -723548
 Conc: N.D.

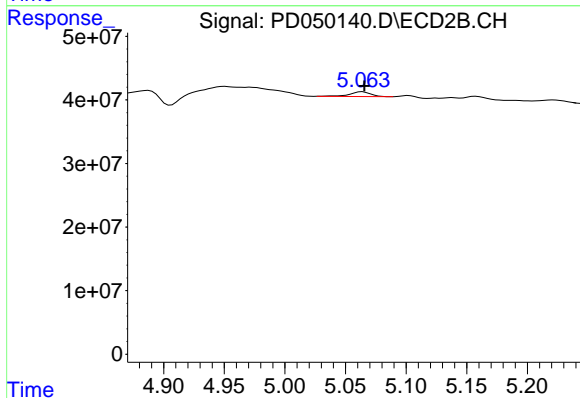


#21 Endrin ketone
 R.T.: 7.799 min
 Delta R.T.: -0.016 min
 Response: 5702357
 Conc: 0.28 ng/ml



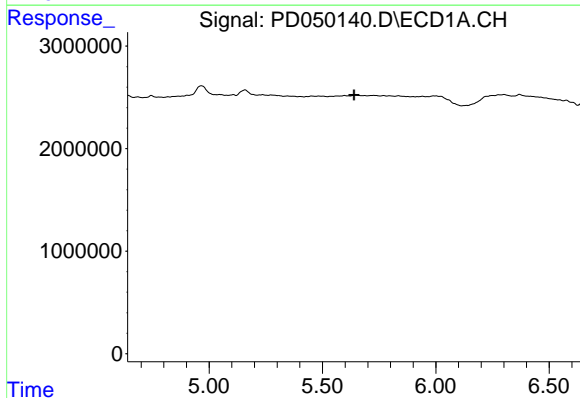
#23 Chlordane-1

R.T.: 5.159 min
 Delta R.T.: 0.023 min
 Response: 1354227
 Conc: 46.20 ng/ml



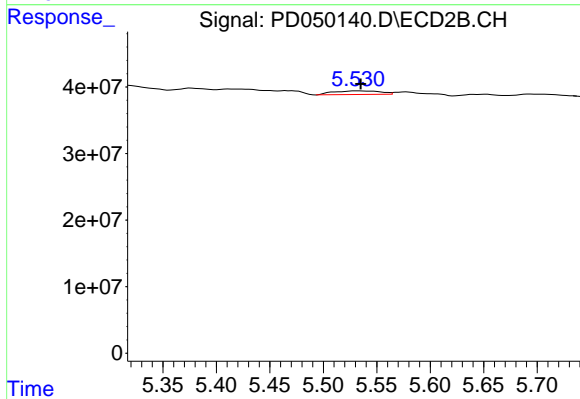
#23 Chlordane-1

R.T.: 5.064 min
 Delta R.T.: -0.001 min
 Response: 9240189
 Conc: 6.63 ng/ml



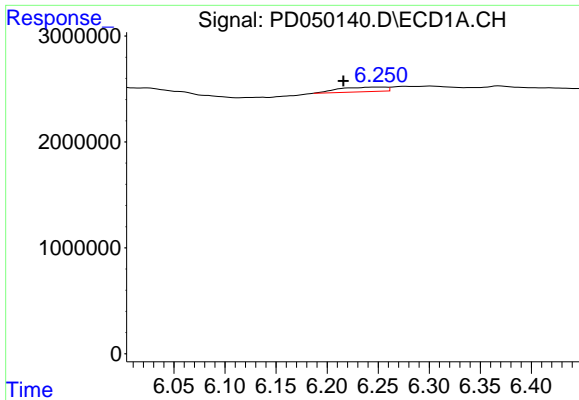
#24 Chlordane-2

R.T.: 0.000 min
 Exp R.T.: 5.640 min
 Response: 0
 Conc: N.D.

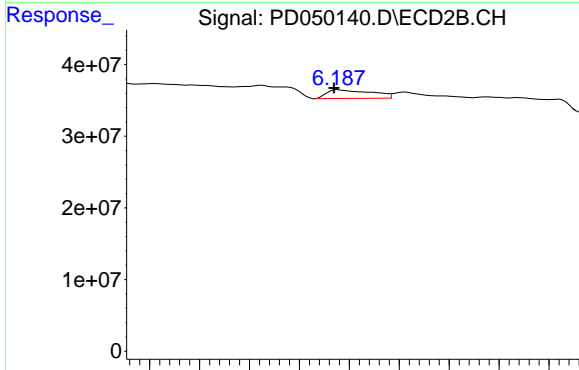


#24 Chlordane-2

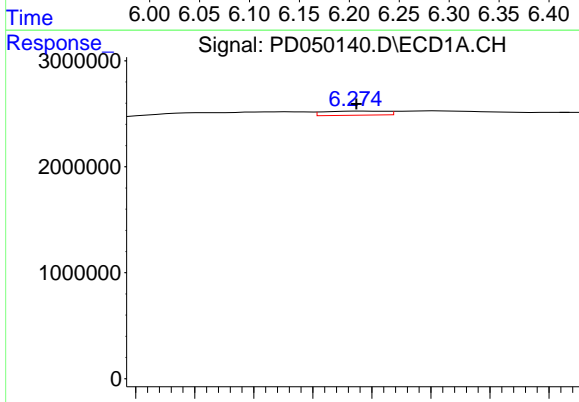
R.T.: 5.531 min
 Delta R.T.: -0.003 min
 Response: 16727724
 Conc: 13.60 ng/ml



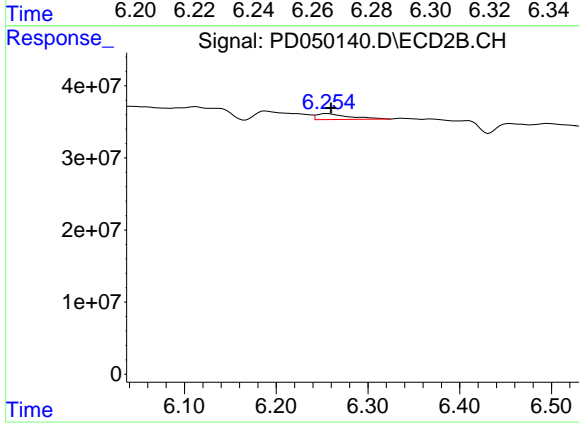
#25 Chlordane-3
 R.T.: 6.253 min
 Delta R.T.: 0.037 min
 Response: 1381286
 Conc: 15.74 ng/ml



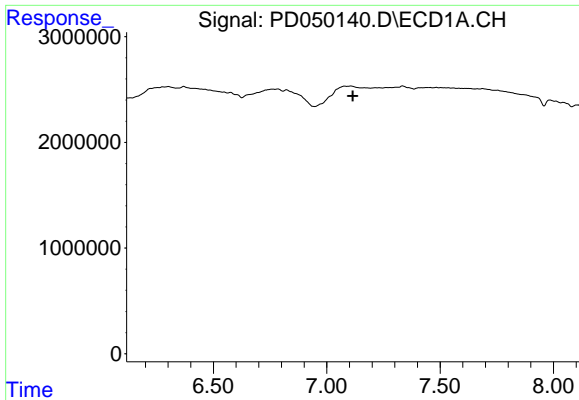
#25 Chlordane-3
 R.T.: 6.188 min
 Delta R.T.: 0.004 min
 Response: 37672723
 Conc: 9.03 ng/ml



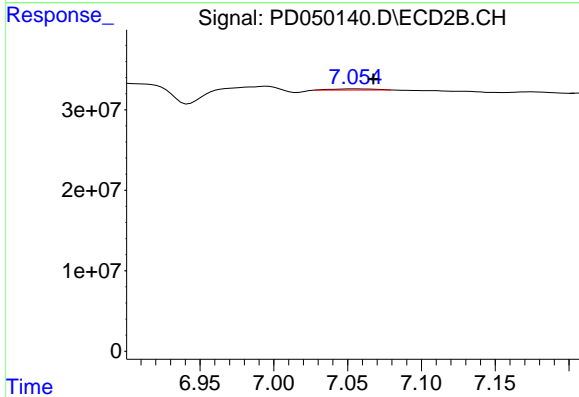
#26 Chlordane-4
 R.T.: 6.277 min
 Delta R.T.: 0.002 min
 Response: 567063
 Conc: 7.83 ng/ml



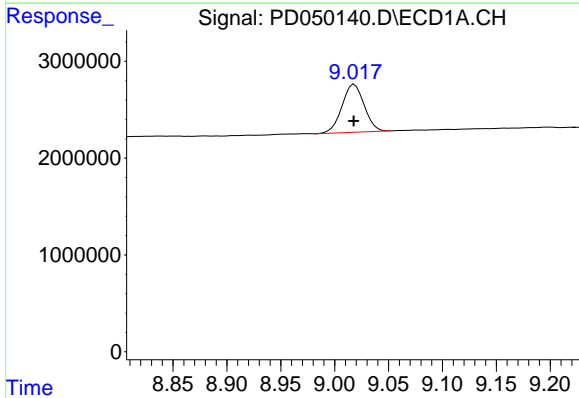
#26 Chlordane-4
 R.T.: 6.256 min
 Delta R.T.: -0.004 min
 Response: 20010457
 Conc: 4.27 ng/ml



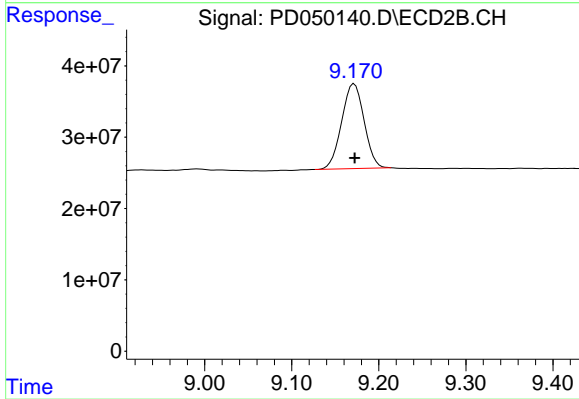
#27 Chlordane-5
 R.T.: 0.000 min
 Exp R.T.: 7.114 min
 Response: 0
 Conc: N.D.



#27 Chlordane-5
 R.T.: 7.055 min
 Delta R.T.: -0.013 min
 Response: 3092705
 Conc: 3.34 ng/ml



#28 Decachlorobiphenyl
 R.T.: 9.018 min
 Delta R.T.: 0.000 min
 Response: 7103322
 Conc: 11.82 ng/ml



#28 Decachlorobiphenyl
 R.T.: 9.172 min
 Delta R.T.: 0.000 min
 Response: 213236428
 Conc: 12.41 ng/ml