

Data Path : Z:\pestpcbsrv\HPCHEM1\ECD_D\Data\PD110122\
 Data File : PD072739.D
 Signal(s) : Signal #1: ECD1A.ch Signal #2: ECD2B.ch
 Acq On : 01 Nov 2022 14:37
 Operator : AR\AJ
 Sample : N5321-09
 Misc :
 ALS Vial : 19 Sample Multiplier: 1

Instrument :

ECD_D

ClientSampleId :

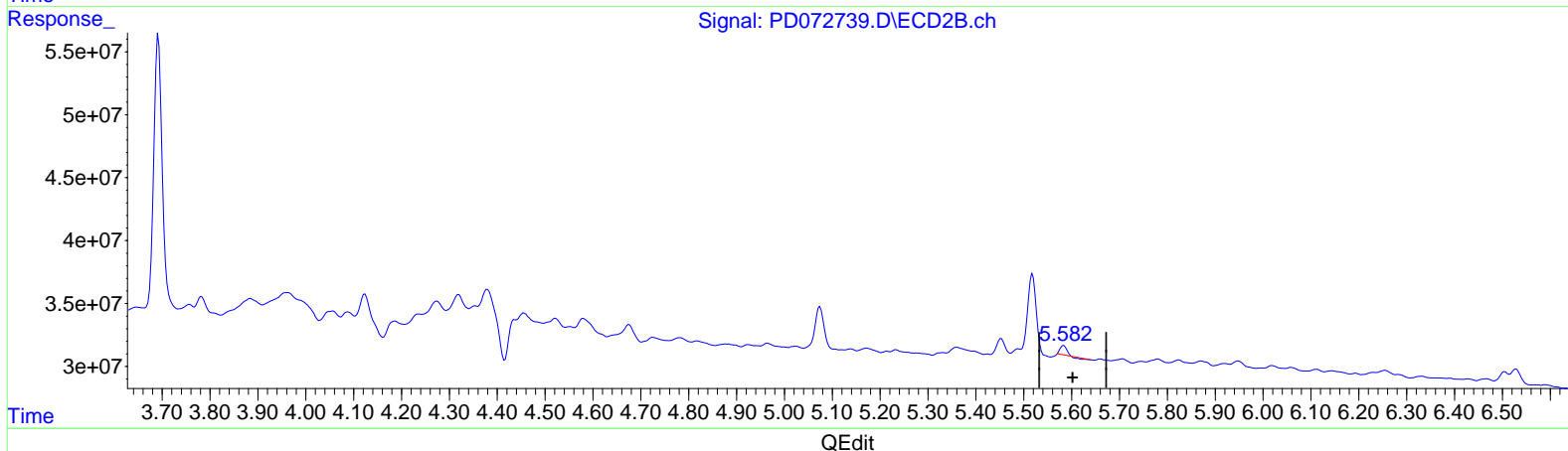
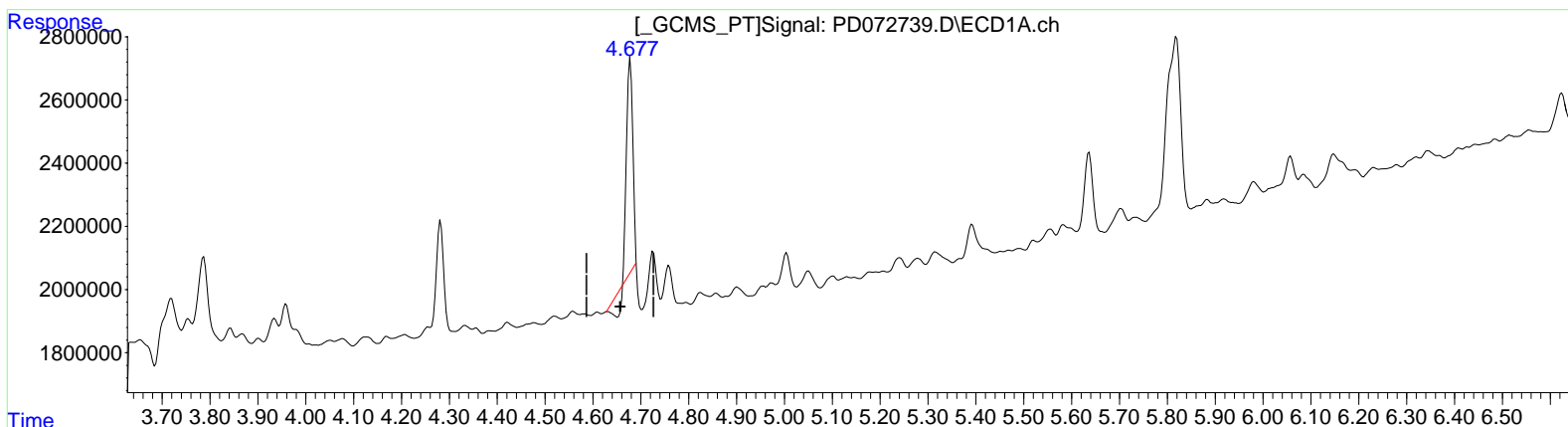
DBWR5

Manual IntegrationsAPPROVED

Reviewed By :Abdul Mirza 11/02/2022
 Supervised By :Ankita Jodhani 11/02/2022

Integration File signal 1: autoint1.e
 Integration File signal 2: autoint2.e
 Quant Time: Nov 01 22:27:37 2022
 Quant Method : Z:\pestpcbsrv\HPCHEM1\ECD_D\Method\PD102622CLP.M
 Quant Title : GC Extractables
 QLast Update : Wed Oct 26 16:50:44 2022
 Response via : Initial Calibration
 Integrator: ChemStation

Volume Inj. : 1 µl
 Signal #1 Phase : ZB-MR2 Signal #2 Phase: ZB-MR1
 Signal #1 Info : 30M x 0.32mm x0.2 Signal #2 Info : 30M x 0.32mm x 0.50µm



(8) Heptachlor epoxide (B)
 4.678min 1.955 ng/ml
 response 5559806

(8) Heptachlor epoxide #2 (B)
 5.584min 0.248 ng/ml
 response 5127441

Data Path : Z:\pestpcbsrv\HPCHEM1\ECD_D\Data\PD110122\
 Data File : PD072739.D
 Signal(s) : Signal #1: ECD1A.ch Signal #2: ECD2B.ch
 Acq On : 01 Nov 2022 14:37
 Operator : AR\AJ
 Sample : N5321-09
 Misc :
 ALS Vial : 19 Sample Multiplier: 1

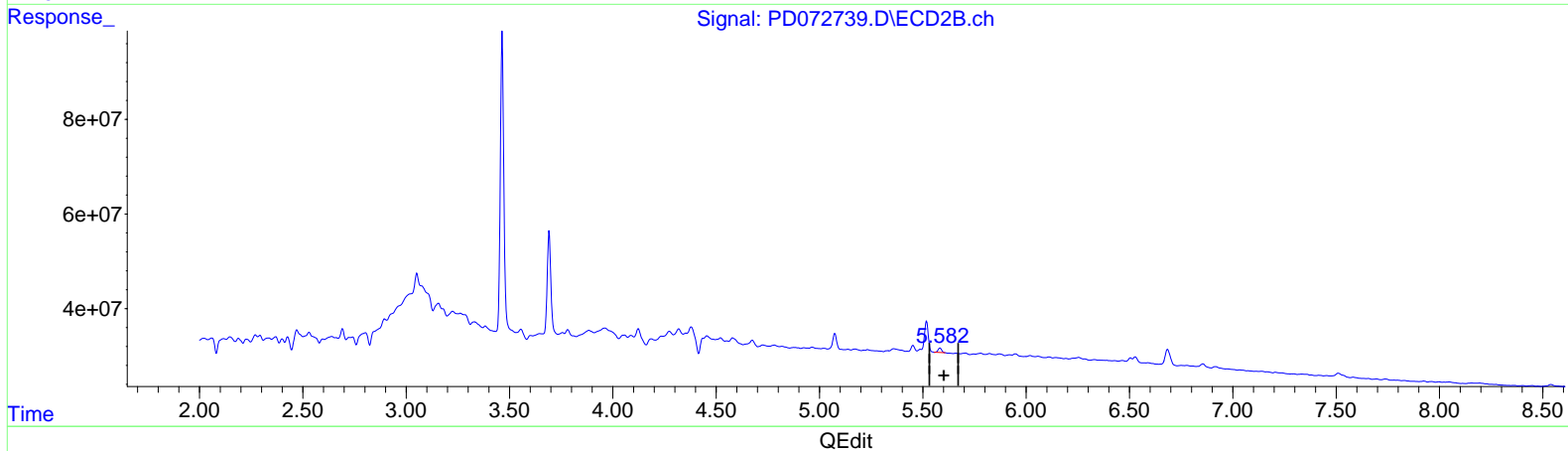
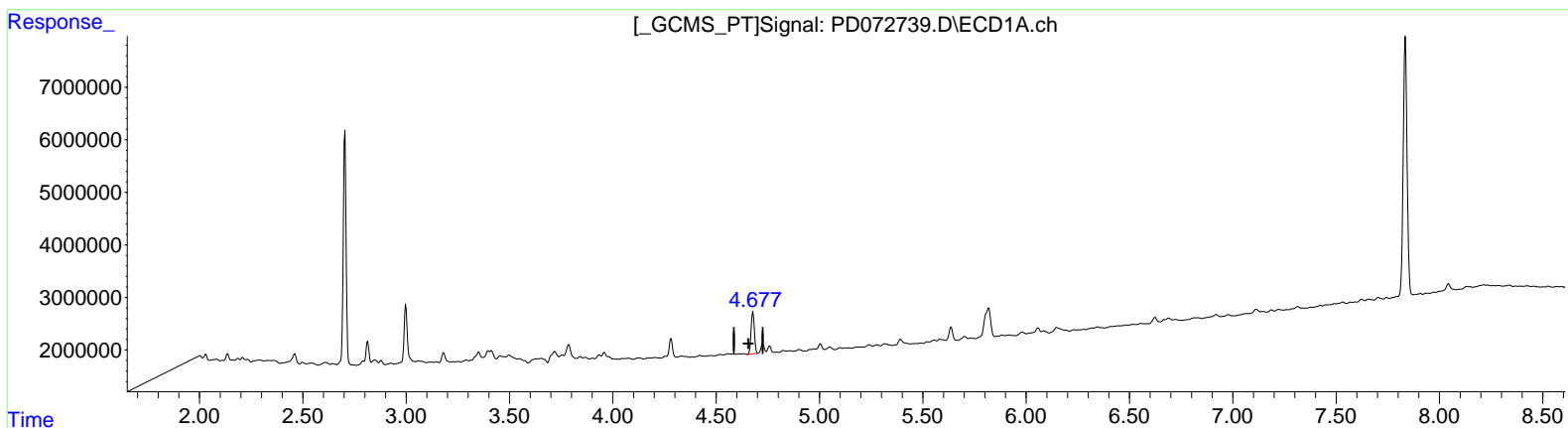
Instrument :
 ECD_D
 ClientSampleId :
 DBWR5

Manual Integrations APPROVED

Reviewed By : Abdul Mirza 11/02/2022
 Supervised By : Ankita Jodhani 11/02/2022

Integration File signal 1: autoint1.e
 Integration File signal 2: autoint2.e
 Quant Time: Nov 01 22:27:37 2022
 Quant Method : Z:\pestpcbsrv\HPCHEM1\ECD_D\Method\PD102622CLP.M
 Quant Title : GC Extractables
 QLast Update : Wed Oct 26 16:50:44 2022
 Response via : Initial Calibration
 Integrator: ChemStation

Volume Inj. : 1 µl
 Signal #1 Phase : ZB-MR2 Signal #2 Phase: ZB-MR1
 Signal #1 Info : 30M x 0.32mm x 0.2 Signal #2 Info : 30M x 0.32mm x 0.50µm



(8) Heptachlor epoxide (B)
 4.677min 3.123 ng/ml m
 response 8881324

(8) Heptachlor epoxide #2 (B)
 5.582min 0.540 ng/ml m
 response 11162322