

Data Path : Z:\pestpcbsrv\HPCHEM1\ECD_D\Data\PD110122\
 Data File : PD072730.D
 Signal(s) : Signal #1: ECD1A.ch Signal #2: ECD2B.ch
 Acq On : 01 Nov 2022 12:13
 Operator : AR\AJ
 Sample : N5276-13
 Misc :
 ALS Vial : 10 Sample Multiplier: 1

Instrument :
 ECD_D
ClientSampleId :
 EW4X3

Manual Integrations
APPROVED

Reviewed By :Abdul Mirza 11/02/2022
 Supervised By :Ankita Jodhani 11/02/2022

Integration File signal 1: autoint1.e
 Integration File signal 2: autoint2.e
 Quant Time: Nov 01 22:18:15 2022
 Quant Method : Z:\pestpcbsrv\HPCHEM1\ECD_D\Method\PD102622CLP.M
 Quant Title : GC Extractables
 QLast Update : Wed Oct 26 16:50:44 2022
 Response via : Initial Calibration
 Integrator: ChemStation

Volume Inj. : 1 µl
 Signal #1 Phase : ZB-MR2 Signal #2 Phase: ZB-MR1
 Signal #1 Info : 30M x 0.32mm x0.2 Signal #2 Info : 30M x 0.32mm x 0.50µm

Compound	RT#1	RT#2	Resp#1	Resp#2	ng/ml	ng/ml

System Monitoring Compounds						
1) SA Tetrachlo...	2.703	3.464	37300376	553.6E6	16.044	13.814m
27) SA Decachlor...	7.835	8.918	64694031	331.9E6	32.958	35.296

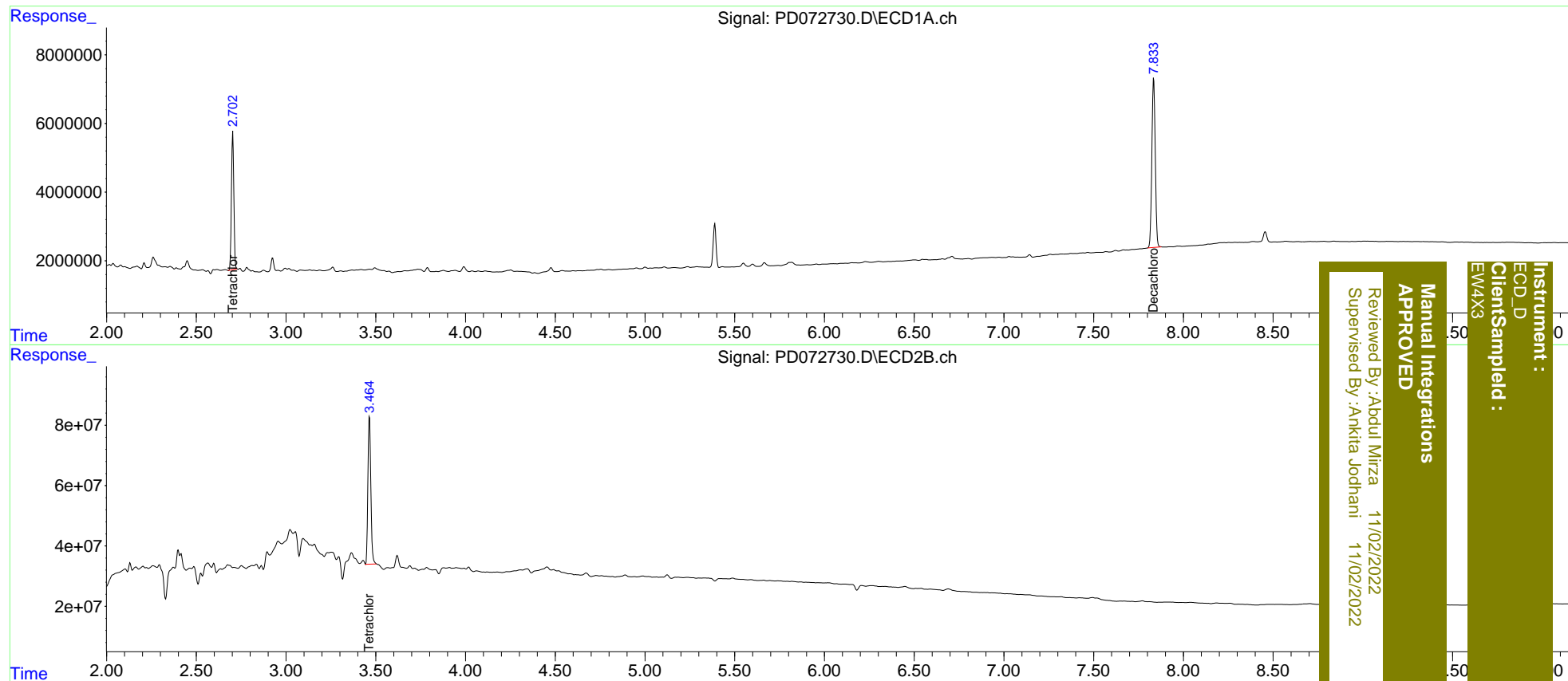
Target Compounds

 (f)=RT Delta > 1/2 Window (#)=Amounts differ by > 25% (m)=manual int.

Data Path : Z:\pestpcbsrv\HPCHEM1\ECD_D\Data\PD110122\
 Data File : PD072730.D
 Signal(s) : Signal #1: ECD1A.ch Signal #2: ECD2B.ch
 Acq On : 01 Nov 2022 12:13
 Operator : AR\AJ
 Sample : N5276-13
 Misc :
 ALS Vial : 10 Sample Multiplier: 1

Integration File signal 1: autoint1.e
 Integration File signal 2: autoint2.e
 Quant Time: Nov 01 22:18:15 2022
 Quant Method : Z:\pestpcbsrv\HPCHEM1\ECD_D\Method\PD102622CLP.M
 Quant Title : GC Extractables
 QLast Update : Wed Oct 26 16:50:44 2022
 Response via : Initial Calibration
 Integrator: ChemStation

Volume Inj. : 1 µl
 Signal #1 Phase : ZB-MR2 Signal #2 Phase: ZB-MR1
 Signal #1 Info : 30M x 0.32mm x0.2 Signal #2 Info : 30M x 0.32mm x 0.50µm



Instrument : ECD_D
 ClientSampled : EW4X3
 Manual Integrations APPROVED
 Reviewed By :Abdul Mirza 11/02/2022
 Supervised By :Ankita Jodhani 11/02/2022