

Data Path : Z:\pestpcbsrv\HPCHEM1\ECD\_D\Data\PD110221\  
 Data File : PD066666.D  
 Signal(s) : Signal #1: ECD1A.ch Signal #2: ECD2B.ch  
 Acq On : 02 Nov 2021 08:27  
 Operator : AR\AJ  
 Sample : HEXANE  
 Misc :  
 ALS Vial : 1 Sample Multiplier: 1

Instrument :  
 ECD\_D  
 ClientSampleId :

Integration File signal 1: autoint1.e  
 Integration File signal 2: autoint2.e  
 Quant Time: Nov 02 22:51:49 2021  
 Quant Method : Z:\pestpcbsrv\HPCHEM1\ECD\_D\Method\PD102721CLP.M  
 Quant Title : GC Extractables  
 QLast Update : Wed Oct 27 16:50:55 2021  
 Response via : Initial Calibration  
 Integrator: ChemStation

Volume Inj. : 1 µl  
 Signal #1 Phase : ZB-MR2 Signal #2 Phase: ZB-MR1  
 Signal #1 Info : 30M x 0.32mm x0.2 Signal #2 Info : 30M x 0.32mm x 0.50µm

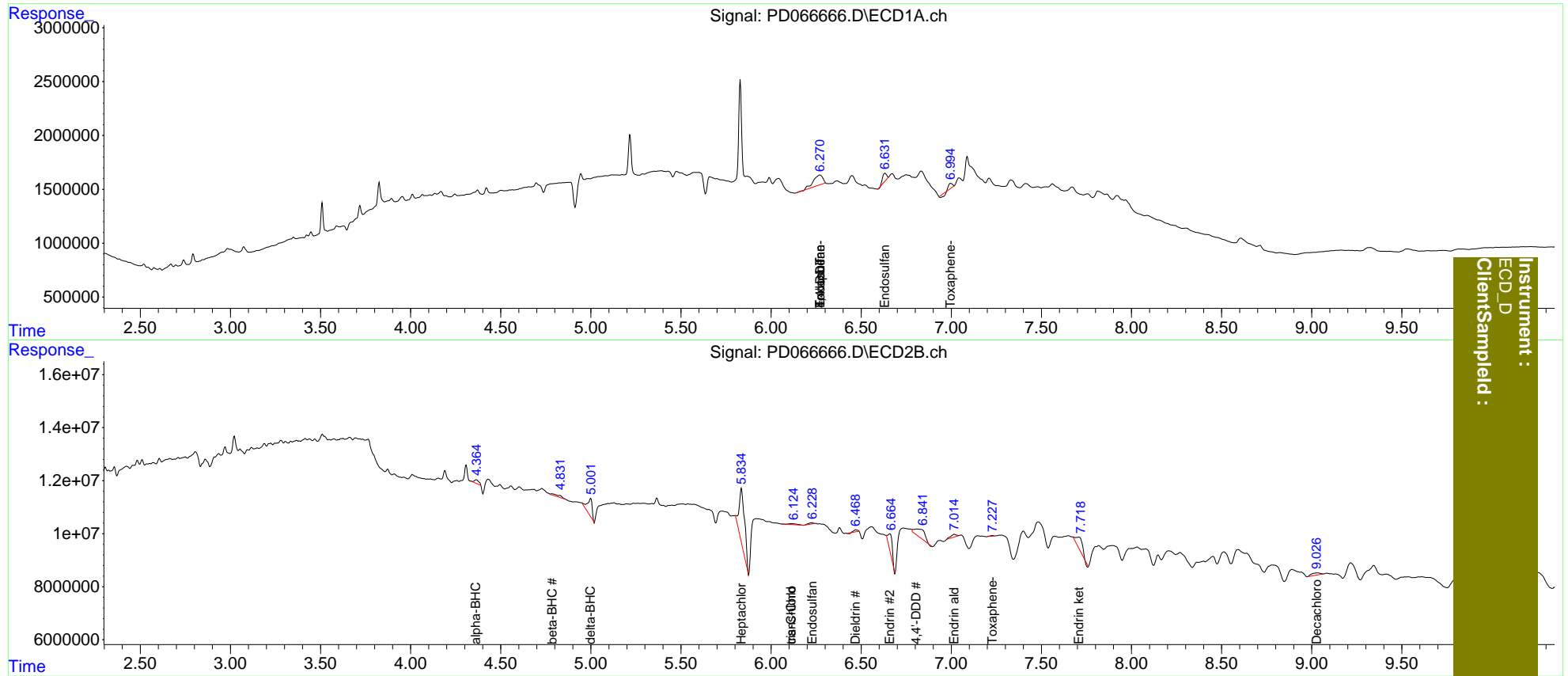
Compound	RT#1	RT#2	Resp#1	Resp#2	ng/ml	ng/ml
-----						
System Monitoring Compounds						
1) SA Tetrachlo...	0.000	3.961	0	330449	N.D.	<MDL
2) SA Decachlor...	0.000	9.028	0	2832002	N.D.	0.543
Target Compounds						
2) A alpha-BHC	0.000	4.364	0	2357508	N.D.	0.216
5) MB Aldrin	0.000	5.449	0	493371	N.D.	<MDL
6) B beta-BHC	0.000	4.785f	0	2097492	N.D.	0.426
7) B delta-BHC	0.000	5.000f	0	12321245	N.D.	1.245
8) B Heptachlo...	0.000	5.835	0	41213473	N.D.	5.482
9) A Endosulfan I	0.000	6.221	0	864200	N.D.	0.110
10) B trans-Chl...	0.000	6.112f	0	1301055	N.D.	0.151
11) B cis-Chlor...	0.000	6.112	0	1301055	N.D.	0.152
12) B 4,4'-DDE	0.000	6.249f	0	56372	N.D.	<MDL
13) MA Dieldrin	0.000	6.470	0	1037574	N.D.	0.130
14) MA Endrin	0.000	6.660	0	11758330	N.D.	1.733
15) B Endosulfa...	6.271	0.000	3578304	0	1.723	N.D. #
16) A 4,4'-DDD	0.000	6.806	0	12499984	N.D.	1.936
17) MA 4,4'-DDT	6.271f	7.147f	3578304	-1948555	1.893	N.D. #
18) B Endrin al...	0.000	7.016	0	2130830	N.D.	0.400
19) B Endosulfa...	6.632	7.229	1110673	323815	0.609	<MDL #
21) B Endrin ke...	0.000	7.709	0	9360055	N.D.	1.194
24) Toxaphene-3	6.271	7.147	3578304	-1948555	96.198	N.D. #
25) Toxaphene-4	0.000	7.229	0	323815	N.D.	2.865
26) Toxaphene-5	6.997	7.631	228124	-30520	5.848	N.D. #

(f)=RT Delta > 1/2 Window (#)=Amounts differ by > 25% (m)=manual int.

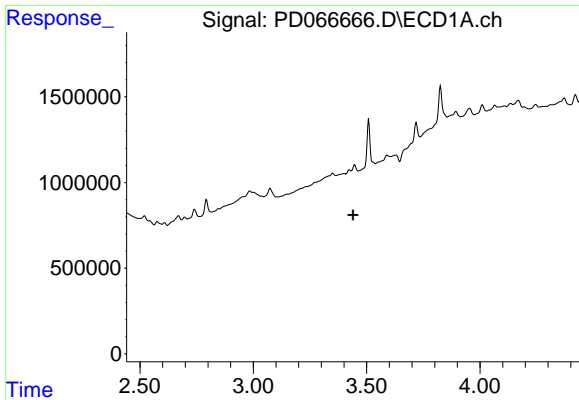
Data Path : Z:\pestpcbsrv\HPCHEM1\ECD\_D\Data\PD110221\  
 Data File : PD066666.D  
 Signal(s) : Signal #1: ECD1A.ch Signal #2: ECD2B.ch  
 Acq On : 02 Nov 2021 08:27  
 Operator : AR\AJ  
 Sample : HEXANE  
 Misc :  
 ALS Vial : 1 Sample Multiplier: 1

Integration File signal 1: autoint1.e  
 Integration File signal 2: autoint2.e  
 Quant Time: Nov 02 22:51:49 2021  
 Quant Method : Z:\pestpcbsrv\HPCHEM1\ECD\_D\Method\PD102721CLP.M  
 Quant Title : GC Extractables  
 QLast Update : Wed Oct 27 16:50:55 2021  
 Response via : Initial Calibration  
 Integrator: ChemStation

Volume Inj. : 1 µl  
 Signal #1 Phase : ZB-MR2 Signal #2 Phase: ZB-MR1  
 Signal #1 Info : 30M x 0.32mm x0.2 Signal #2 Info : 30M x 0.32mm x 0.50µm



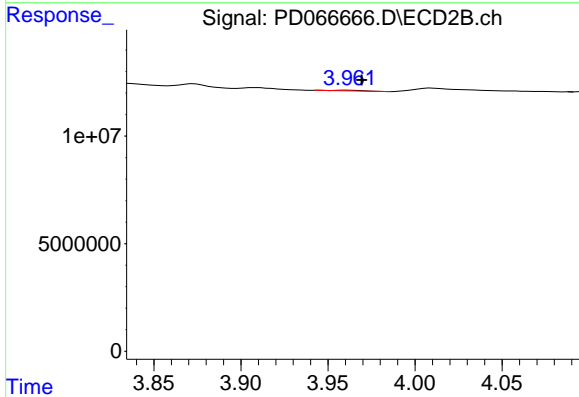
Instrument :  
 ECD\_D  
 ClientSampled :



#1 Tetrachloro-m-xylene

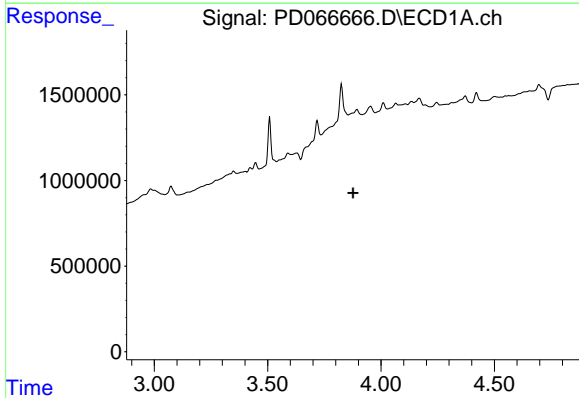
R.T.: 0.000 min  
 Exp R.T.: 3.440 min  
 Response: 0  
 Conc: N.D.

Instrument :  
 ECD\_D  
 ClientSampleId :



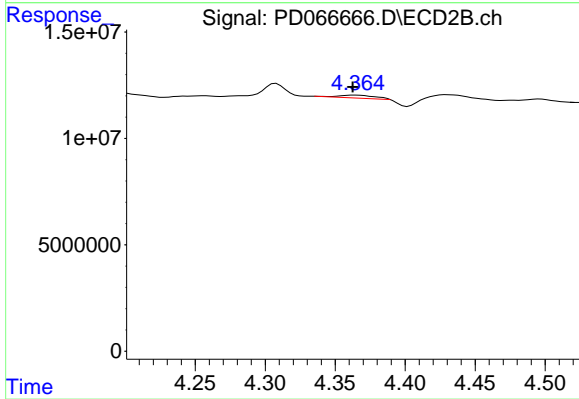
#1 Tetrachloro-m-xylene

R.T.: 3.961 min  
 Delta R.T.: -0.008 min  
 Response: 330449  
 Conc: N.D.



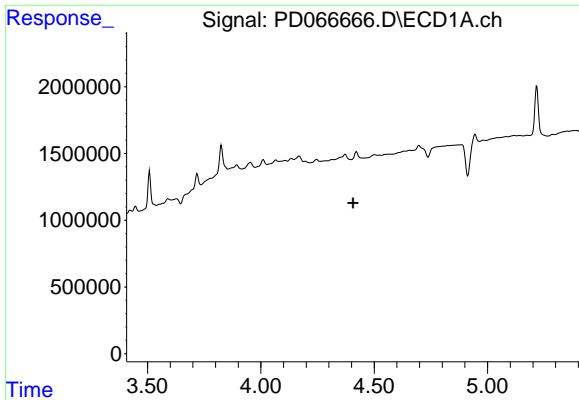
#2 alpha-BHC

R.T.: 0.000 min  
 Exp R.T.: 3.877 min  
 Response: 0  
 Conc: N.D.



#2 alpha-BHC

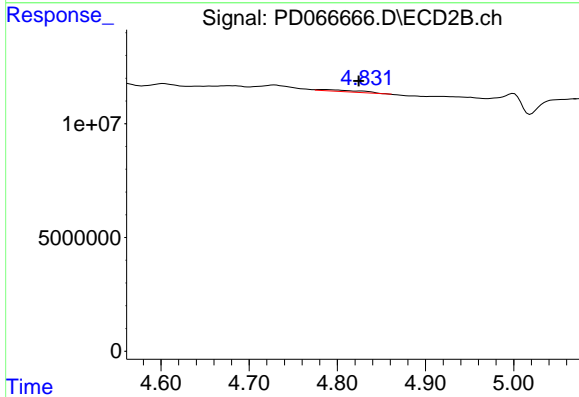
R.T.: 4.364 min  
 Delta R.T.: 0.001 min  
 Response: 2357508  
 Conc: 0.22 ng/ml



#6 beta-BHC

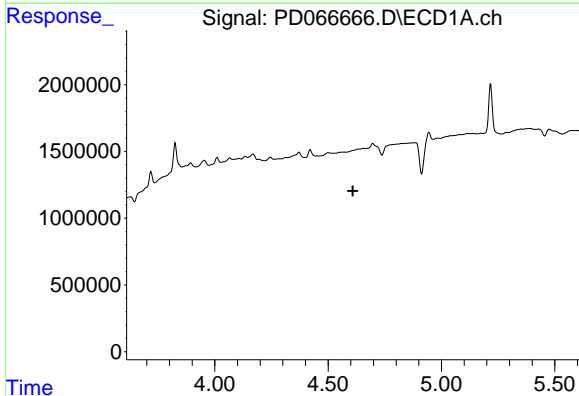
R.T.: 0.000 min  
 Exp R.T. : 4.407 min  
 Response: 0  
 Conc: N.D.

Instrument :  
 ECD\_D  
 ClientSampleId :



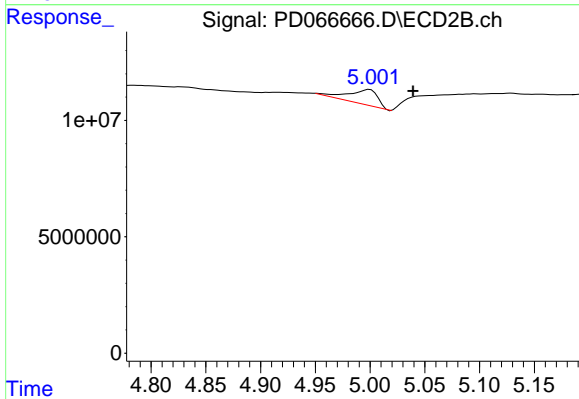
#6 beta-BHC

R.T.: 4.785 min  
 Delta R.T.: -0.040 min  
 Response: 2097492  
 Conc: 0.43 ng/ml



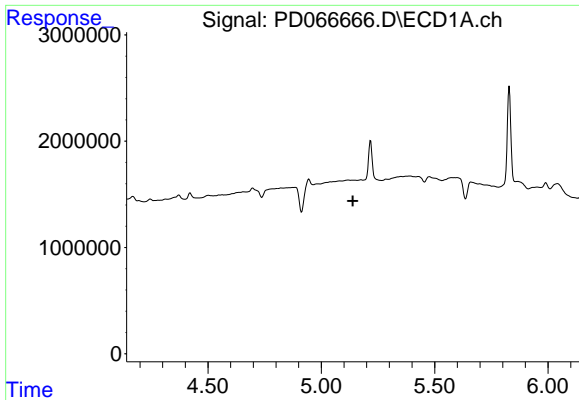
#7 delta-BHC

R.T.: 0.000 min  
 Exp R.T. : 4.609 min  
 Response: 0  
 Conc: N.D.



#7 delta-BHC

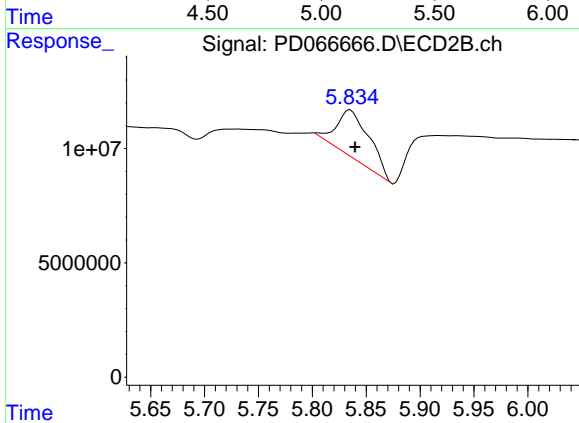
R.T.: 5.000 min  
 Delta R.T.: -0.040 min  
 Response: 12321245  
 Conc: 1.25 ng/ml



#8 Heptachlor epoxide

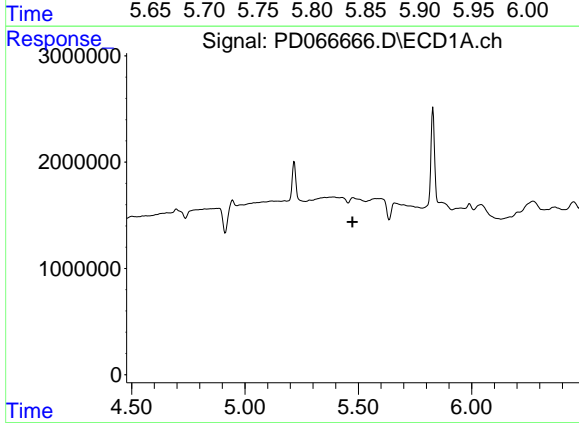
R.T.: 0.000 min  
 Exp R.T. : 5.139 min  
 Response: 0  
 Conc: N.D.

Instrument :  
 ECD\_D  
 ClientSampleId :



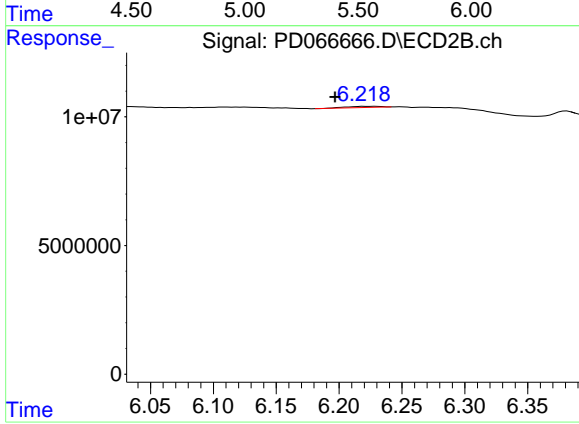
#8 Heptachlor epoxide

R.T.: 5.835 min  
 Delta R.T.: -0.004 min  
 Response: 41213473  
 Conc: 5.48 ng/ml



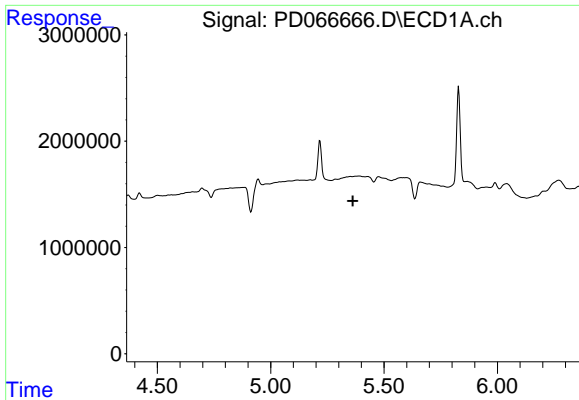
#9 Endosulfan I

R.T.: 0.000 min  
 Exp R.T. : 5.475 min  
 Response: 0  
 Conc: N.D.



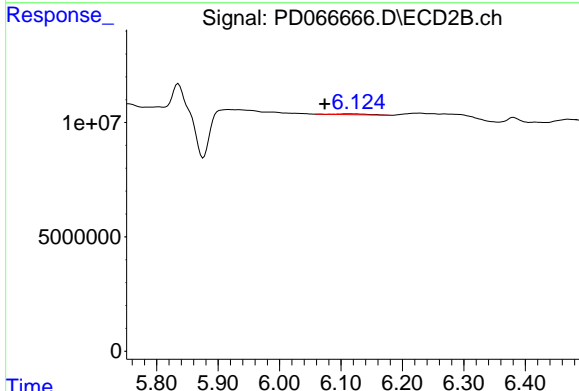
#9 Endosulfan I

R.T.: 6.221 min  
 Delta R.T.: 0.024 min  
 Response: 864200  
 Conc: 0.11 ng/ml

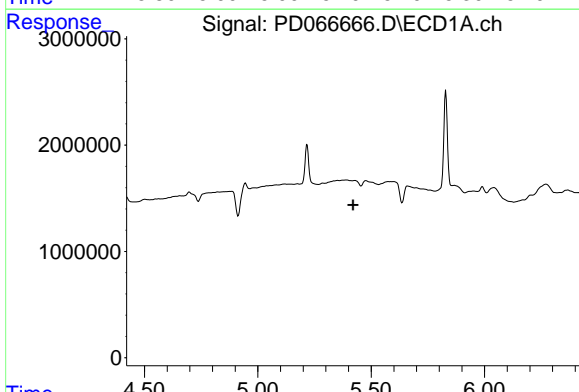


#10 trans-Chlordane  
 R.T.: 0.000 min  
 Exp R.T.: 5.363 min  
 Response: 0  
 Conc: N.D.

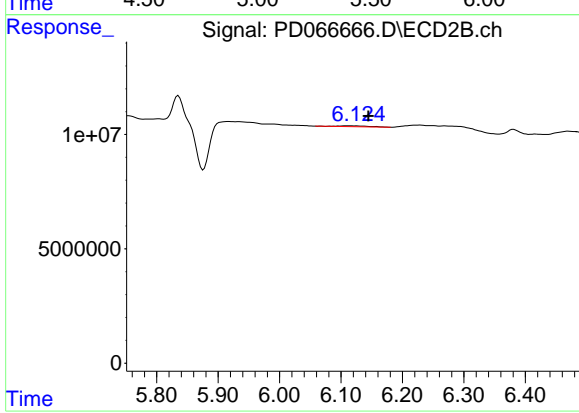
Instrument :  
 ECD\_D  
 ClientSampleId :



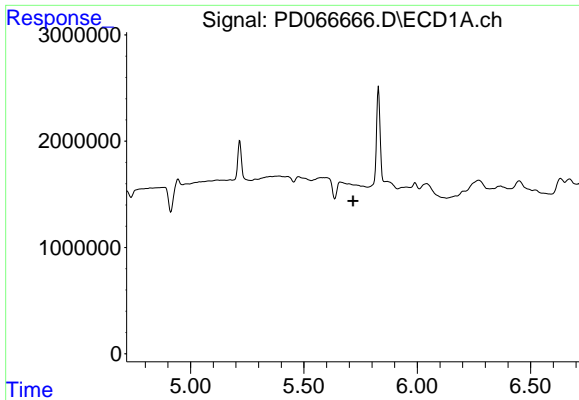
#10 trans-Chlordane  
 R.T.: 6.112 min  
 Delta R.T.: 0.039 min  
 Response: 1301055  
 Conc: 0.15 ng/ml



#11 cis-Chlordane  
 R.T.: 0.000 min  
 Exp R.T.: 5.420 min  
 Response: 0  
 Conc: N.D.

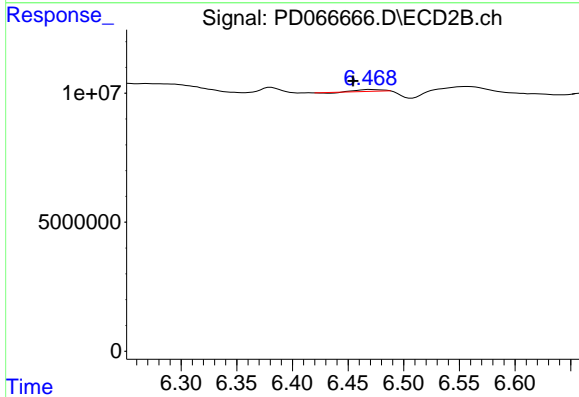


#11 cis-Chlordane  
 R.T.: 6.112 min  
 Delta R.T.: -0.032 min  
 Response: 1301055  
 Conc: 0.15 ng/ml

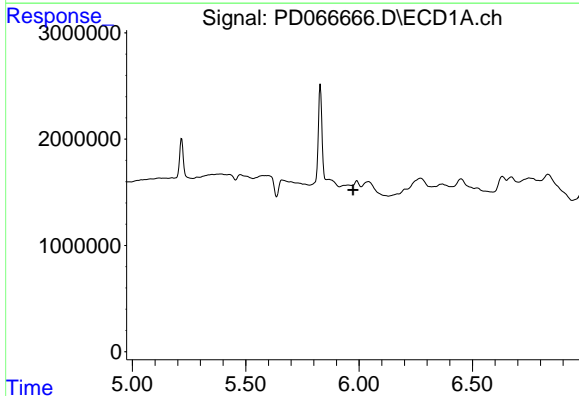


#13 Dieldrin  
 R.T.: 0.000 min  
 Exp R.T.: 5.717 min  
 Response: 0  
 Conc: N.D.

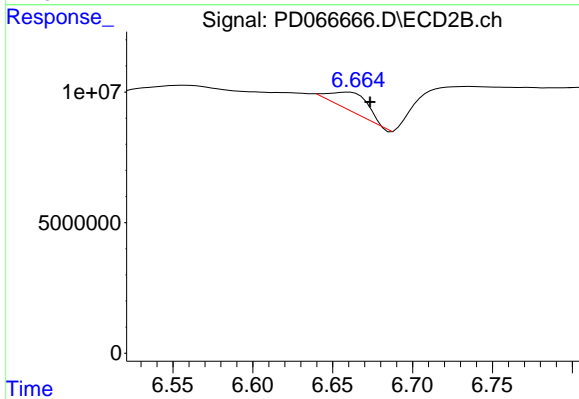
Instrument :  
 ECD\_D  
 ClientSampleId :



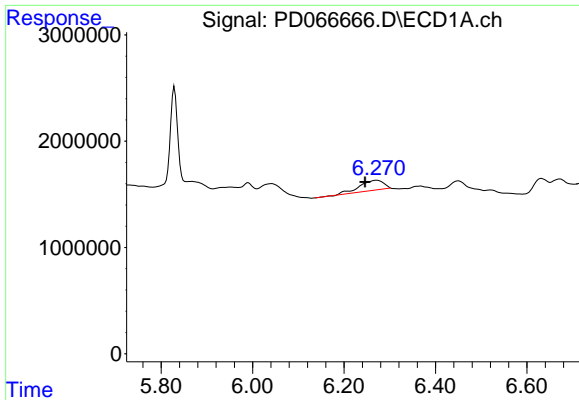
#13 Dieldrin  
 R.T.: 6.470 min  
 Delta R.T.: 0.016 min  
 Response: 1037574  
 Conc: 0.13 ng/ml



#14 Endrin  
 R.T.: 0.000 min  
 Exp R.T.: 5.974 min  
 Response: 0  
 Conc: N.D.

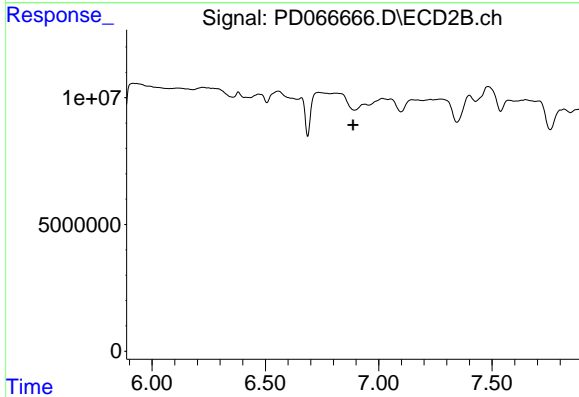


#14 Endrin  
 R.T.: 6.660 min  
 Delta R.T.: -0.013 min  
 Response: 11758330  
 Conc: 1.73 ng/ml

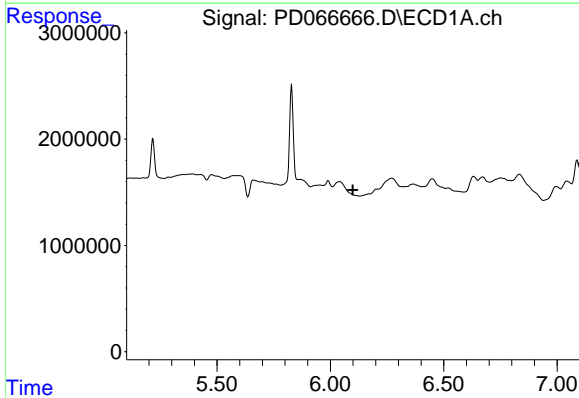


#15 Endosulfan II  
 R.T.: 6.271 min  
 Delta R.T.: 0.025 min  
 Response: 3578304  
 Conc: 1.72 ng/ml

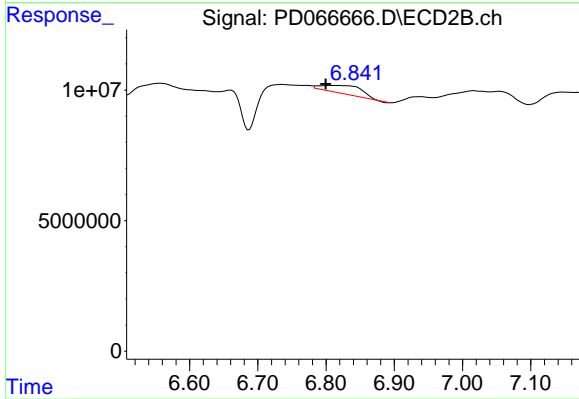
Instrument :  
 ECD\_D  
 ClientSampleId :



#15 Endosulfan II  
 R.T.: 0.000 min  
 Exp R.T. : 6.887 min  
 Response: 0  
 Conc: N.D.

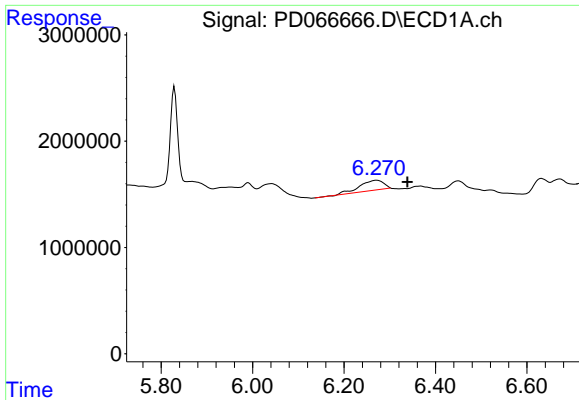


#16 4,4'-DDD  
 R.T.: 0.000 min  
 Exp R.T. : 6.099 min  
 Response: 0  
 Conc: N.D.



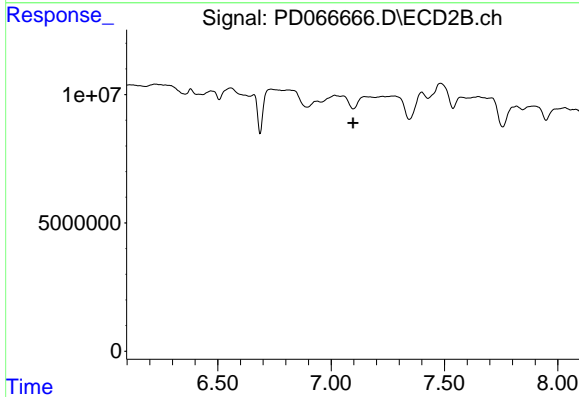
#16 4,4'-DDD  
 R.T.: 6.806 min  
 Delta R.T.: 0.007 min  
 Response: 12499984  
 Conc: 1.94 ng/ml



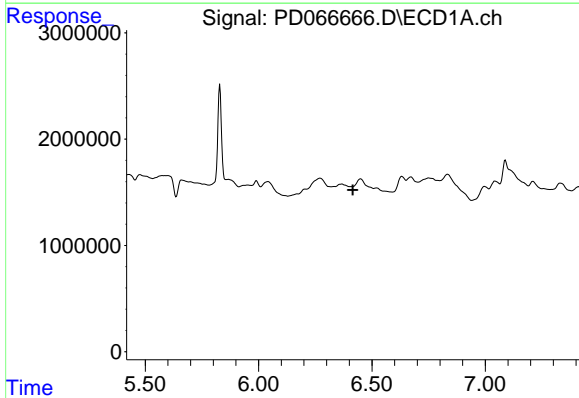


#17 4,4'-DDT  
 R.T.: 6.271 min  
 Delta R.T.: -0.067 min  
 Response: 3578304  
 Conc: 1.89 ng/ml

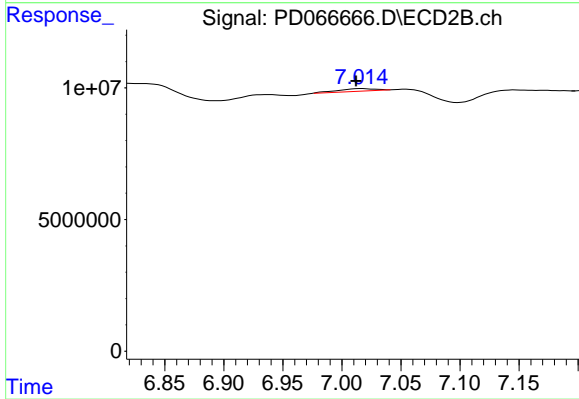
Instrument :  
 ECD\_D  
 ClientSampleId :



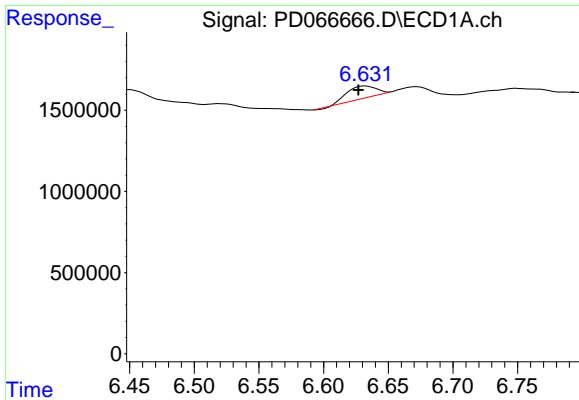
#17 4,4'-DDT  
 R.T.: 7.147 min  
 Delta R.T.: 0.050 min  
 Response: -1948555  
 Conc: N.D.



#18 Endrin aldehyde  
 R.T.: 0.000 min  
 Exp R.T. : 6.416 min  
 Response: 0  
 Conc: N.D.

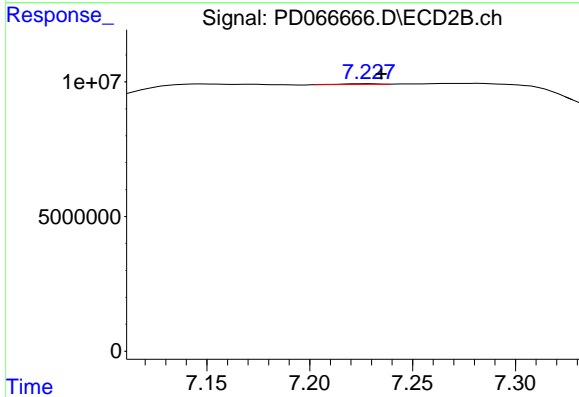


#18 Endrin aldehyde  
 R.T.: 7.016 min  
 Delta R.T.: 0.004 min  
 Response: 2130830  
 Conc: 0.40 ng/ml

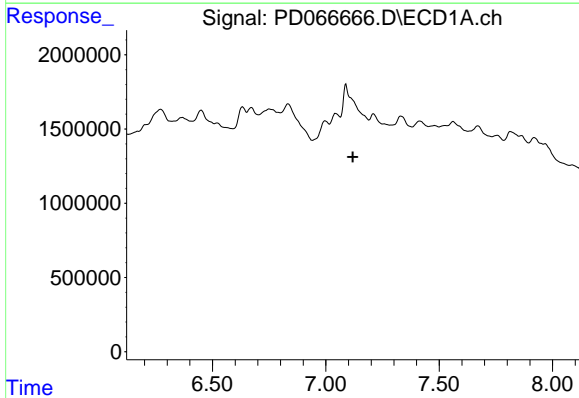


#19 Endosulfan Sulfate  
 R.T.: 6.632 min  
 Delta R.T.: 0.005 min  
 Response: 1110673  
 Conc: 0.61 ng/ml

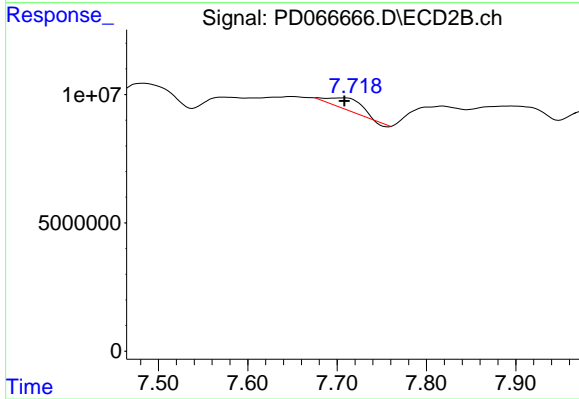
Instrument :  
 ECD\_D  
 ClientSampleId :



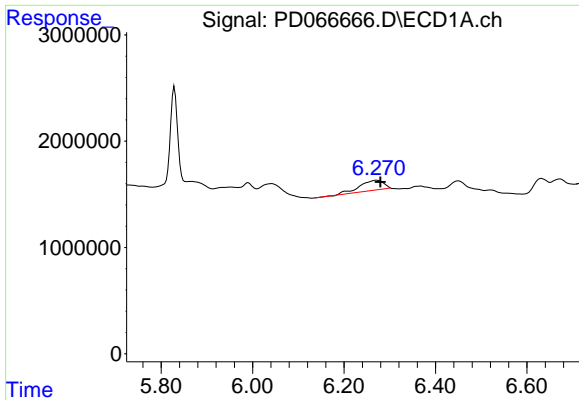
#19 Endosulfan Sulfate  
 R.T.: 7.229 min  
 Delta R.T.: -0.006 min  
 Response: 323815  
 Conc: N.D.



#21 Endrin ketone  
 R.T.: 0.000 min  
 Exp R.T. : 7.119 min  
 Response: 0  
 Conc: N.D.



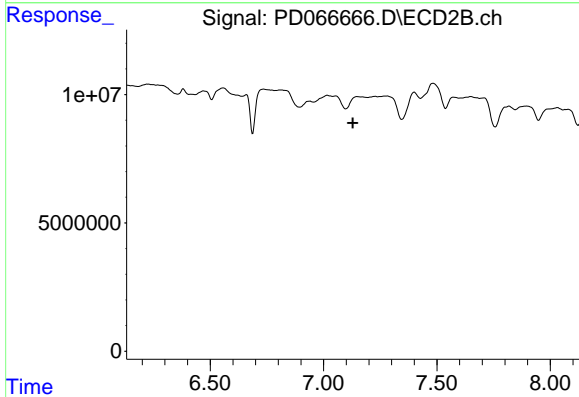
#21 Endrin ketone  
 R.T.: 7.709 min  
 Delta R.T.: 0.000 min  
 Response: 9360055  
 Conc: 1.19 ng/ml



#24 Toxaphene-3

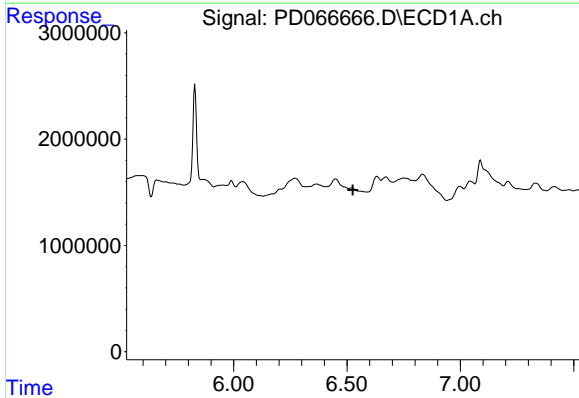
R.T.: 6.271 min  
 Delta R.T.: -0.009 min  
 Response: 3578304  
 Conc: 96.20 ng/ml

Instrument :  
 ECD\_D  
 ClientSampleId :



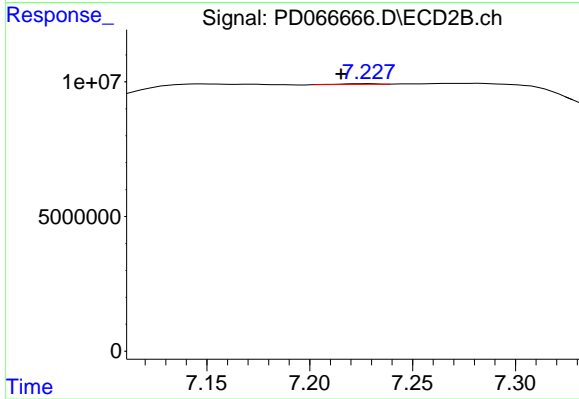
#24 Toxaphene-3

R.T.: 7.147 min  
 Delta R.T.: 0.017 min  
 Response: -1948555  
 Conc: N.D.



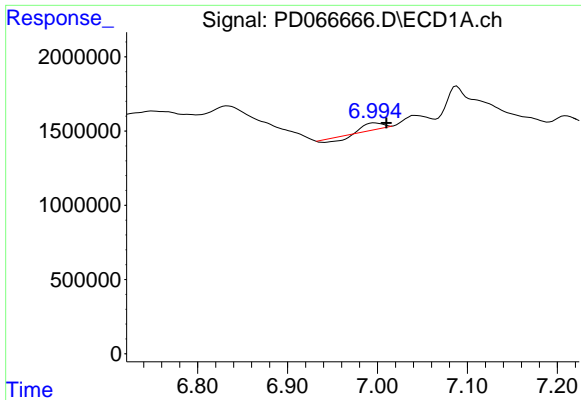
#25 Toxaphene-4

R.T.: 0.000 min  
 Exp R.T. : 6.525 min  
 Response: 0  
 Conc: N.D.



#25 Toxaphene-4

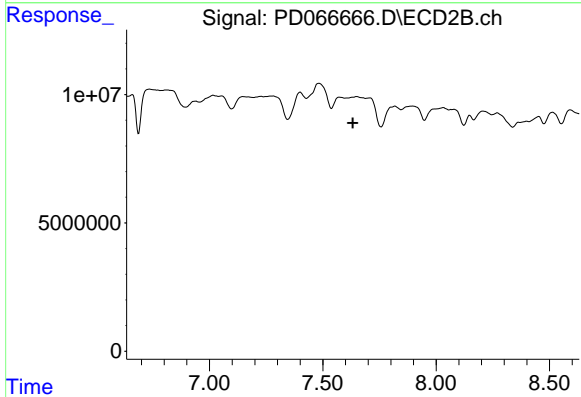
R.T.: 7.229 min  
 Delta R.T.: 0.014 min  
 Response: 323815  
 Conc: 2.86 ng/ml



#26 Toxaphene-5

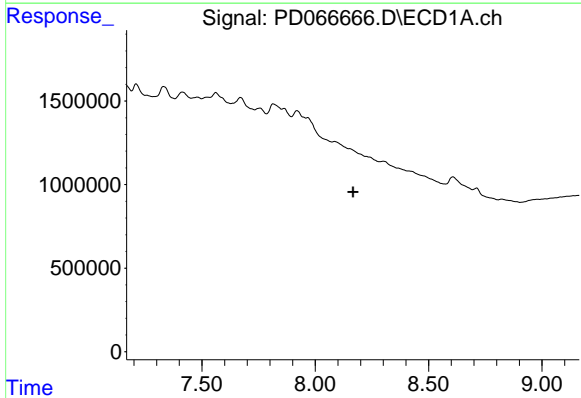
R.T.: 6.997 min  
 Delta R.T.: -0.013 min  
 Response: 228124  
 Conc: 5.85 ng/ml

Instrument :  
 ECD\_D  
 ClientSampleId :



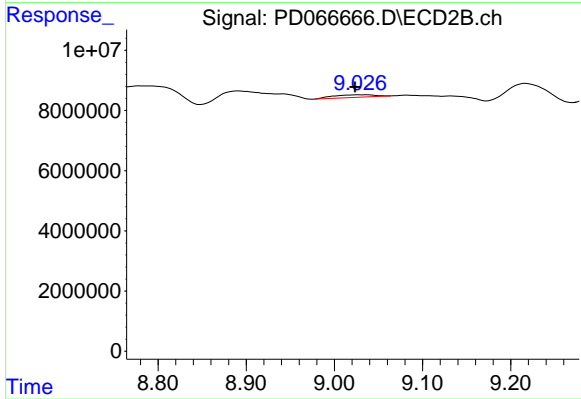
#26 Toxaphene-5

R.T.: 7.631 min  
 Delta R.T.: -0.002 min  
 Response: -30520  
 Conc: N.D.



#27 Decachlorobiphenyl

R.T.: 0.000 min  
 Exp R.T. : 8.168 min  
 Response: 0  
 Conc: N.D.



#27 Decachlorobiphenyl

R.T.: 9.028 min  
 Delta R.T.: 0.004 min  
 Response: 2832002  
 Conc: 0.54 ng/ml