

Data Path : Z:\pestpcbsrv\HPCHEM1\ECD_D\Data\PD110221\
 Data File : PD066705.D
 Signal(s) : Signal #1: ECD1A.ch Signal #2: ECD2B.ch
 Acq On : 02 Nov 2021 19:00
 Operator : AR\AJ
 Sample : M4364-02
 Misc :
 ALS Vial : 29 Sample Multiplier: 1

Instrument :
 ECD_D
 ClientSampleId :

Integration File signal 1: autoint1.e
 Integration File signal 2: autoint2.e
 Quant Time: Nov 02 22:57:21 2021
 Quant Method : Z:\pestpcbsrv\HPCHEM1\ECD_D\Method\PD102721CLP.M
 Quant Title : GC Extractables
 QLast Update : Wed Oct 27 16:50:52 2021
 Response via : Initial Calibration
 Integrator: ChemStation

Volume Inj. : 1 µl
 Signal #1 Phase : ZB-MR2 Signal #2 Phase: ZB-MR1
 Signal #1 Info : 30M x 0.32mm x0.2 Signal #2 Info : 30M x 0.32mm x 0.50µm

Compound	RT#1	RT#2	Resp#1	Resp#2	ng/ml	ng/ml

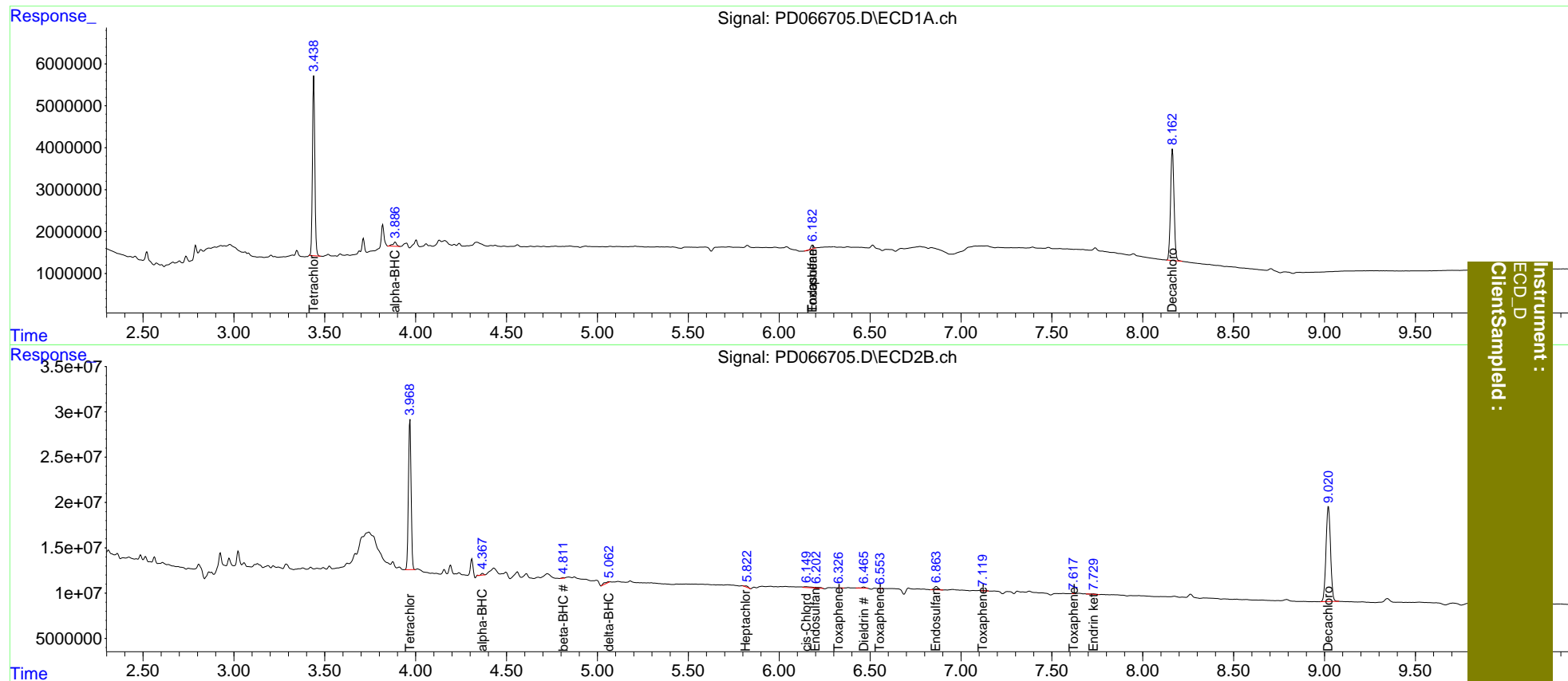
System Monitoring Compounds						
1) SA Tetrachlo...	3.440	3.969	38718608	170.0E6	20.030	19.624
27) SA Decachlor...	8.164	9.022	35490794	182.2E6	30.291	34.936
Target Compounds						
2) A alpha-BHC	3.888	4.368	1436649	1702255	0.491	0.156 #
5) MB Aldrin	0.000	5.458	0	75809	N.D.	<MDL
6) B beta-BHC	0.000	4.813	0	586591	N.D.	0.119
7) B delta-BHC	0.000	5.063	0	2250325	N.D.	0.227
8) B Heptachlo...	0.000	5.818	0	1787317	N.D.	0.238
9) A Endosulfan I	0.000	6.201	0	2047547	N.D.	0.262
10) B trans-Chl...	0.000	6.078	0	102332	N.D.	<MDL
11) B cis-Chlor...	0.000	6.148	0	2896668	N.D.	0.338
12) B 4,4'-DDE	0.000	6.301	0	225294	N.D.	<MDL
13) MA Dieldrin	0.000	6.466	0	1664548	N.D.	0.209
15) B Endosulfa...	6.183f	6.865	805538	5638882	0.388	0.786 #
16) A 4,4'-DDD	0.000	6.797	0	444332	N.D.	<MDL
17) MA 4,4'-DDT	0.000	7.103	0	658772	N.D.	<MDL
18) B Endrin al...	0.000	7.068f	0	392610	N.D.	<MDL
20) A Methoxychlor	0.000	7.563	0	298994	N.D.	<MDL
21) B Endrin ke...	0.000	7.729	0	825126	N.D.	0.105
22) Toxaphene-1	0.000	6.328	0	271012	N.D.	6.705
23) Toxaphene-2	6.183	6.555	805538	61871	50.102	0.937 #
24) Toxaphene-3	0.000	7.120	0	1015399	N.D.	8.923
26) Toxaphene-5	0.000	7.618	0	45131	N.D.	0.530

(f)=RT Delta > 1/2 Window (#)=Amounts differ by > 25% (m)=manual int.

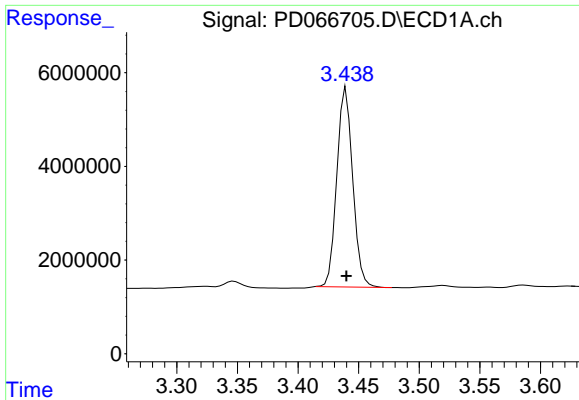
Data Path : Z:\pestpcbsrv\HPCHEM1\ECD_D\Data\PD110221\
 Data File : PD066705.D
 Signal(s) : Signal #1: ECD1A.ch Signal #2: ECD2B.ch
 Acq On : 02 Nov 2021 19:00
 Operator : AR\AJ
 Sample : M4364-02
 Misc :
 ALS Vial : 29 Sample Multiplier: 1

Integration File signal 1: autoint1.e
 Integration File signal 2: autoint2.e
 Quant Time: Nov 02 22:57:21 2021
 Quant Method : Z:\pestpcbsrv\HPCHEM1\ECD_D\Method\PD102721CLP.M
 Quant Title : GC Extractables
 QLast Update : Wed Oct 27 16:50:52 2021
 Response via : Initial Calibration
 Integrator: ChemStation

Volume Inj. : 1 µl
 Signal #1 Phase : ZB-MR2 Signal #2 Phase: ZB-MR1
 Signal #1 Info : 30M x 0.32mm x0.2 Signal #2 Info : 30M x 0.32mm x 0.50µm

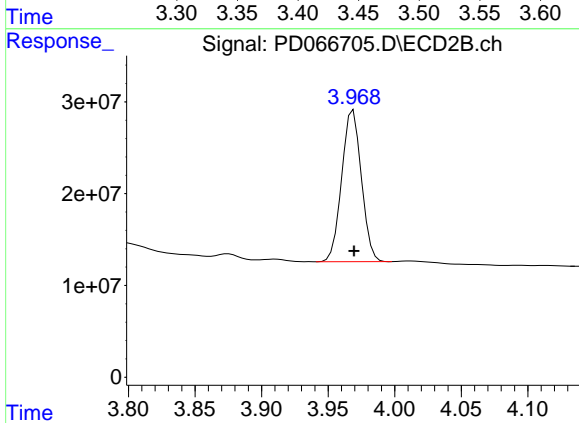


Instrument : ECD_D
 Client/Sample :

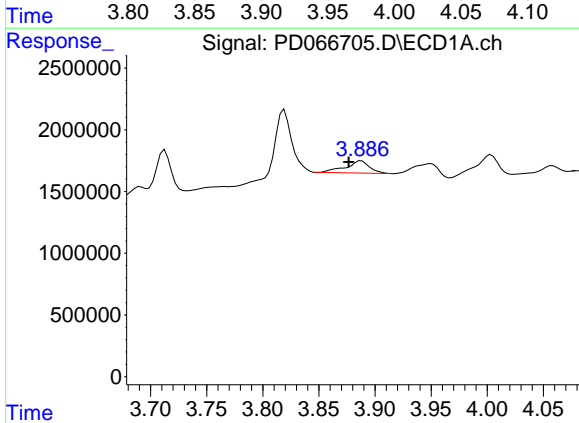


#1 Tetrachloro-m-xylene
 R.T.: 3.440 min
 Delta R.T.: 0.000 min
 Response: 38718608
 Conc: 20.03 ng/ml

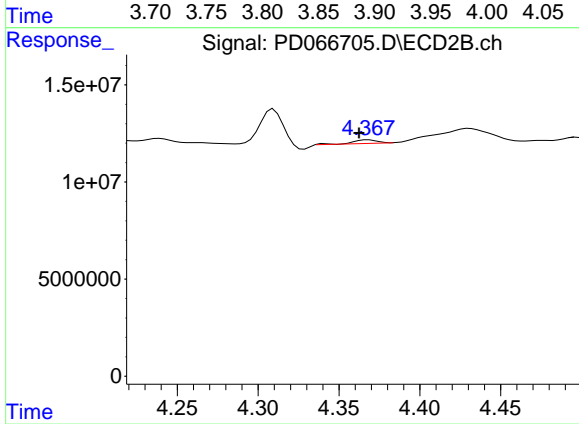
Instrument :
 ECD_D
 ClientSampleId :



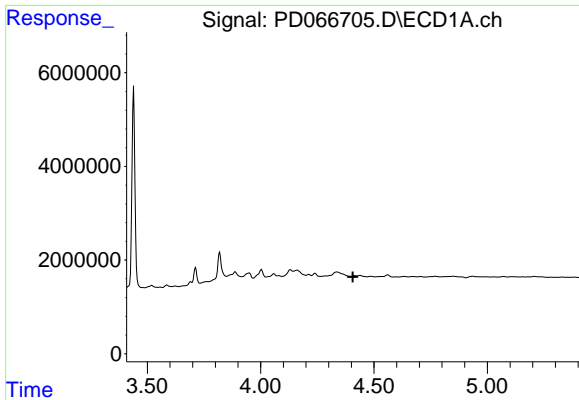
#1 Tetrachloro-m-xylene
 R.T.: 3.969 min
 Delta R.T.: 0.000 min
 Response: 169955060
 Conc: 19.62 ng/ml



#2 alpha-BHC
 R.T.: 3.888 min
 Delta R.T.: 0.011 min
 Response: 1436649
 Conc: 0.49 ng/ml



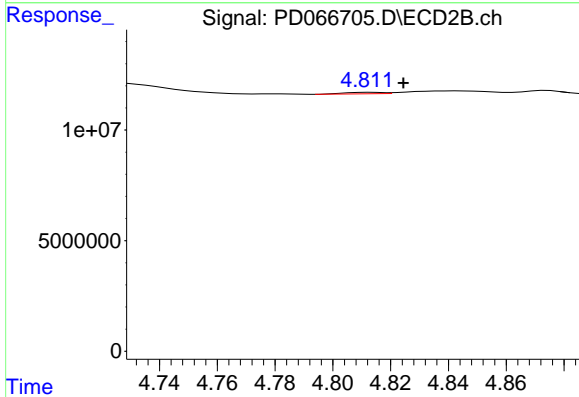
#2 alpha-BHC
 R.T.: 4.368 min
 Delta R.T.: 0.005 min
 Response: 1702255
 Conc: 0.16 ng/ml



#6 beta-BHC

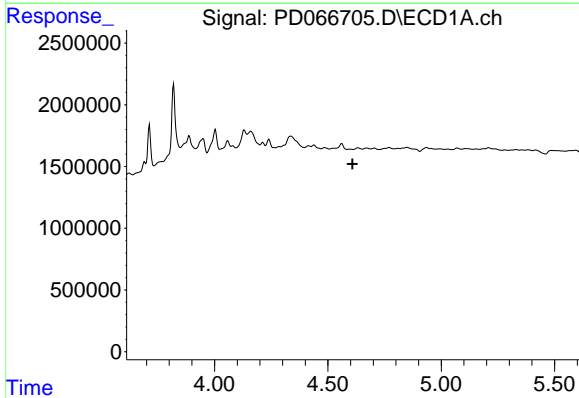
R.T.: 0.000 min
 Exp R.T. : 4.407 min
 Response: 0
 Conc: N.D.

Instrument :
 ECD_D
 ClientSampleId :



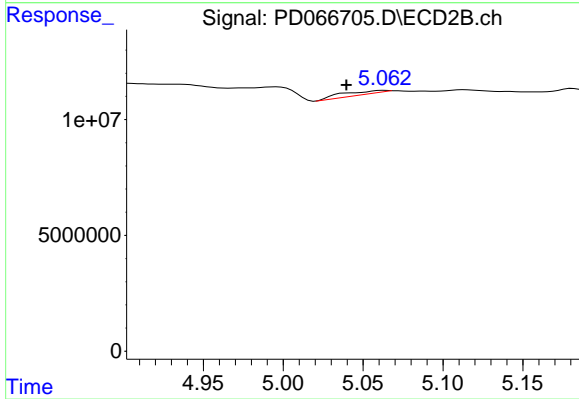
#6 beta-BHC

R.T.: 4.813 min
 Delta R.T.: -0.012 min
 Response: 586591
 Conc: 0.12 ng/ml



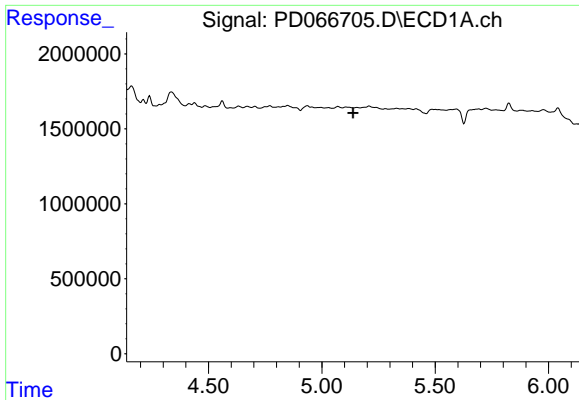
#7 delta-BHC

R.T.: 0.000 min
 Exp R.T. : 4.609 min
 Response: 0
 Conc: N.D.



#7 delta-BHC

R.T.: 5.063 min
 Delta R.T.: 0.024 min
 Response: 2250325
 Conc: 0.23 ng/ml

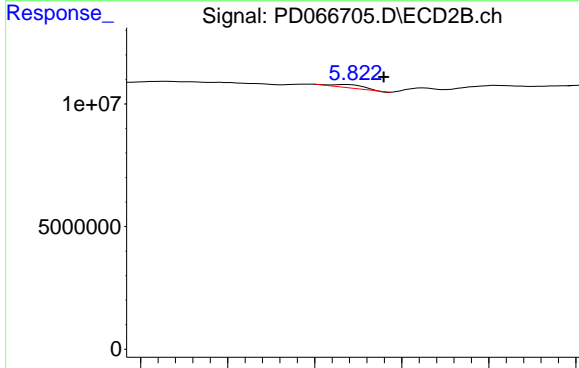


#8 Heptachlor epoxide

R.T.: 0.000 min
 Exp R.T.: 5.139 min
 Response: 0
 Conc: N.D.

Instrument :
 ECD_D
 ClientSampleId :

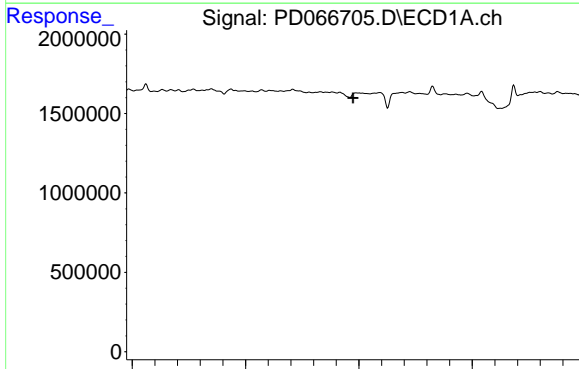
Time



#8 Heptachlor epoxide

R.T.: 5.818 min
 Delta R.T.: -0.022 min
 Response: 1787317
 Conc: 0.24 ng/ml

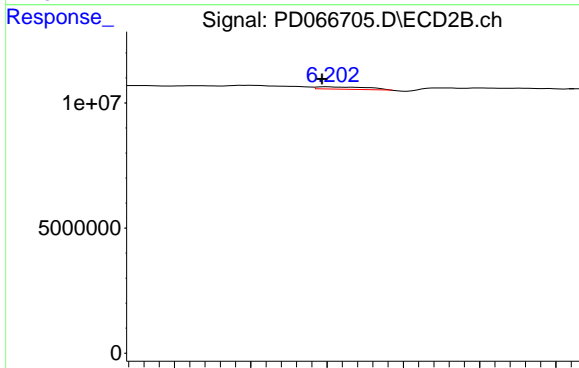
Time



#9 Endosulfan I

R.T.: 0.000 min
 Exp R.T.: 5.475 min
 Response: 0
 Conc: N.D.

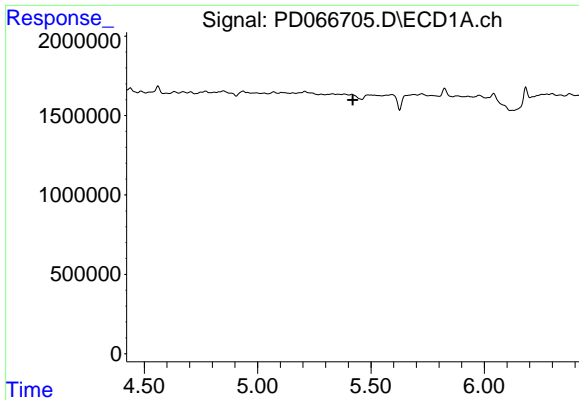
Time



#9 Endosulfan I

R.T.: 6.201 min
 Delta R.T.: 0.004 min
 Response: 2047547
 Conc: 0.26 ng/ml

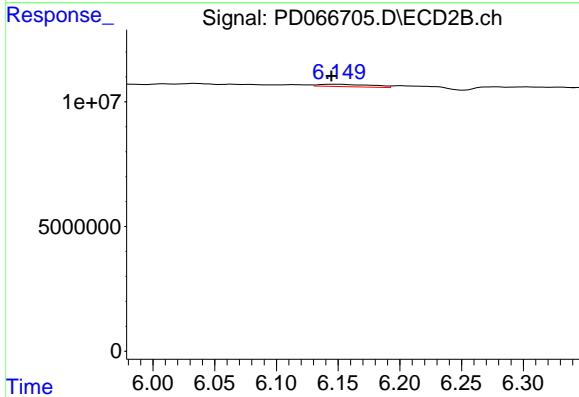
Time



#11 cis-Chlordane

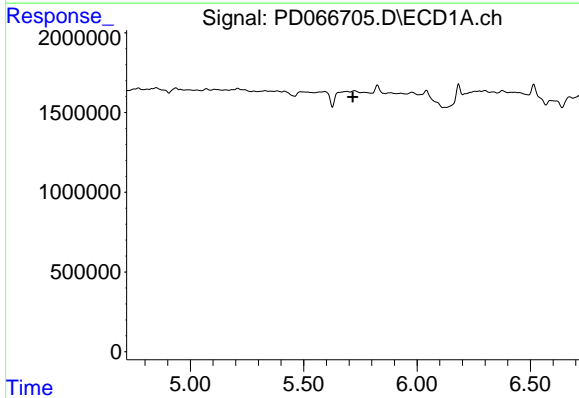
R.T.: 0.000 min
 Exp R.T.: 5.420 min
 Response: 0
 Conc: N.D.

Instrument :
 ECD_D
 ClientSampleId :



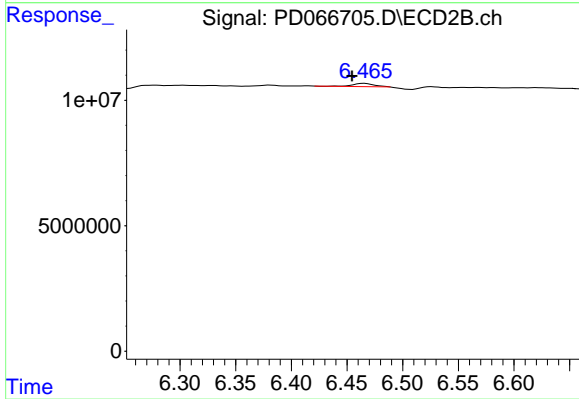
#11 cis-Chlordane

R.T.: 6.148 min
 Delta R.T.: 0.004 min
 Response: 2896668
 Conc: 0.34 ng/ml



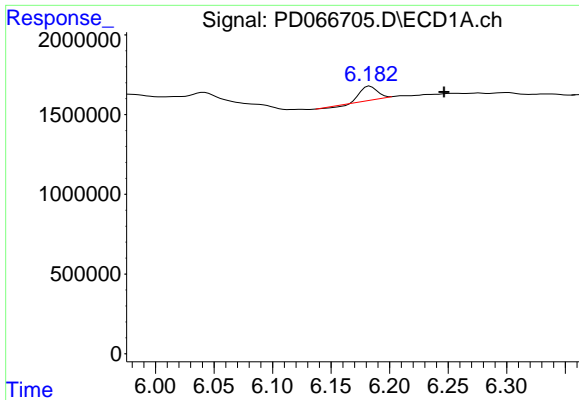
#13 Dieldrin

R.T.: 0.000 min
 Exp R.T.: 5.717 min
 Response: 0
 Conc: N.D.



#13 Dieldrin

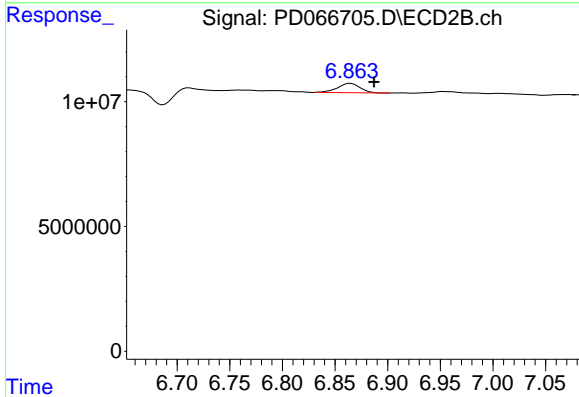
R.T.: 6.466 min
 Delta R.T.: 0.011 min
 Response: 1664548
 Conc: 0.21 ng/ml



#15 Endosulfan II

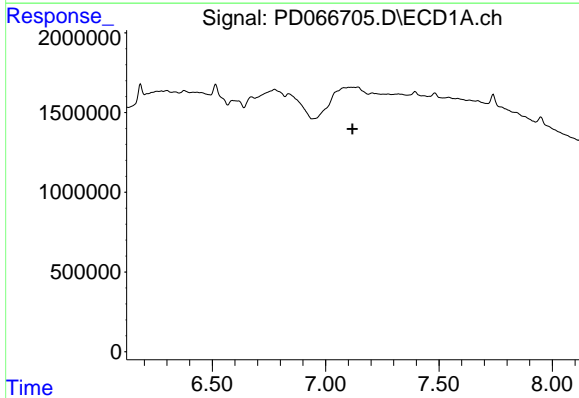
R.T.: 6.183 min
 Delta R.T.: -0.063 min
 Response: 805538
 Conc: 0.39 ng/ml

Instrument :
 ECD_D
 ClientSampleId :



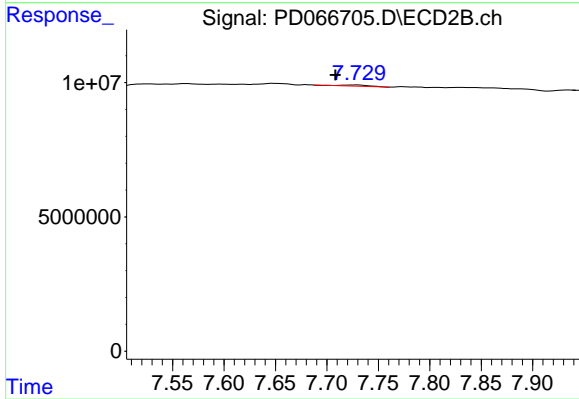
#15 Endosulfan II

R.T.: 6.865 min
 Delta R.T.: -0.022 min
 Response: 5638882
 Conc: 0.79 ng/ml



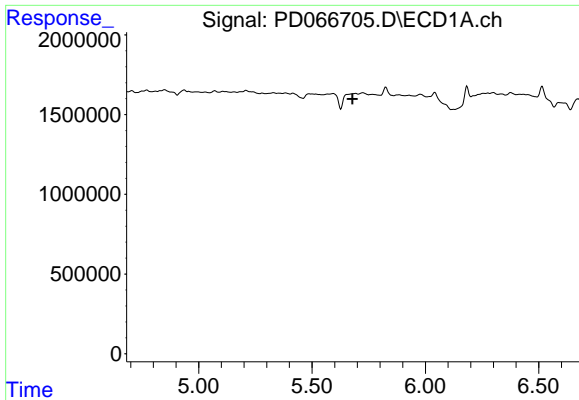
#21 Endrin ketone

R.T.: 0.000 min
 Exp R.T. : 7.119 min
 Response: 0
 Conc: N.D.



#21 Endrin ketone

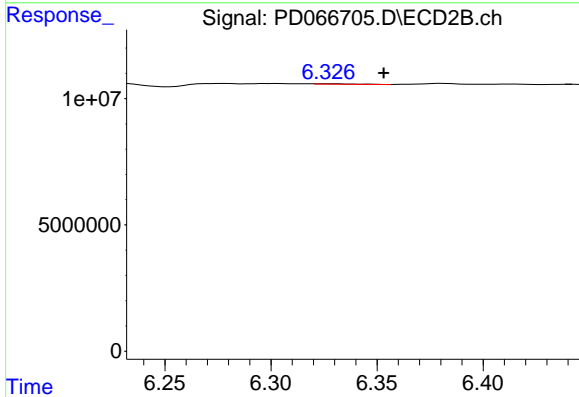
R.T.: 7.729 min
 Delta R.T.: 0.021 min
 Response: 825126
 Conc: 0.11 ng/ml



#22 Toxaphene-1

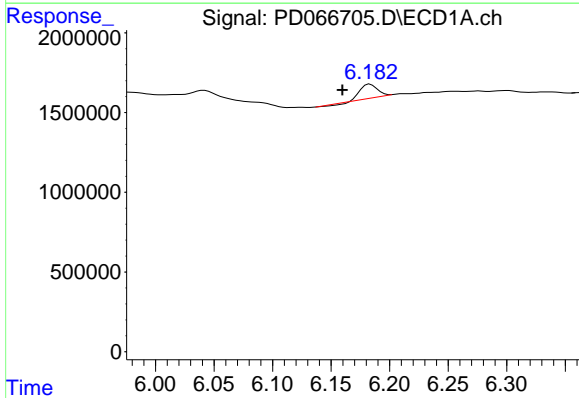
R.T.: 0.000 min
 Exp R.T.: 5.679 min
 Response: 0
 Conc: N.D.

Instrument :
 ECD_D
 ClientSampleId :



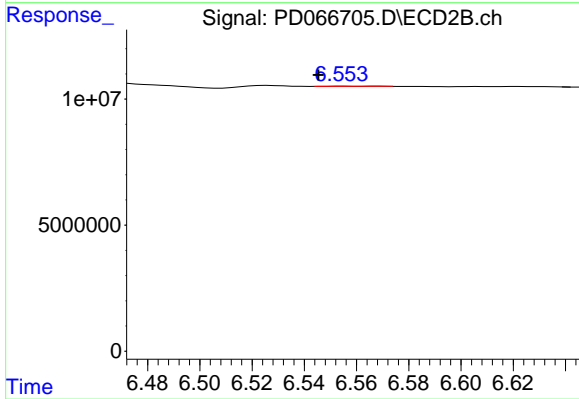
#22 Toxaphene-1

R.T.: 6.328 min
 Delta R.T.: -0.025 min
 Response: 271012
 Conc: 6.70 ng/ml



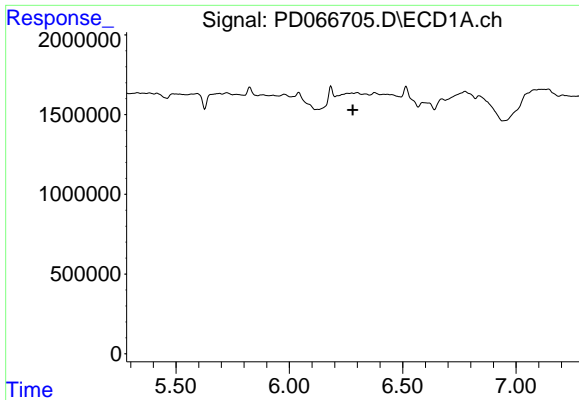
#23 Toxaphene-2

R.T.: 6.183 min
 Delta R.T.: 0.024 min
 Response: 805538
 Conc: 50.10 ng/ml



#23 Toxaphene-2

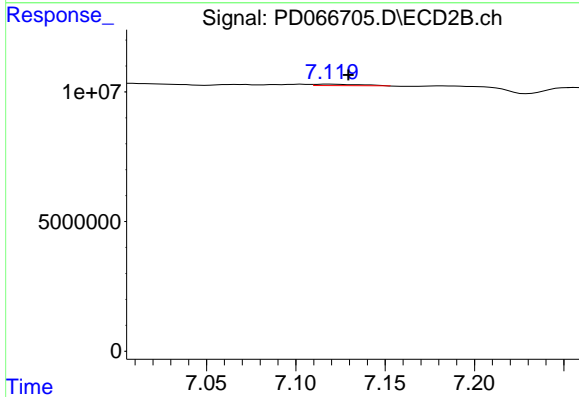
R.T.: 6.555 min
 Delta R.T.: 0.010 min
 Response: 61871
 Conc: 0.94 ng/ml



#24 Toxaphene-3

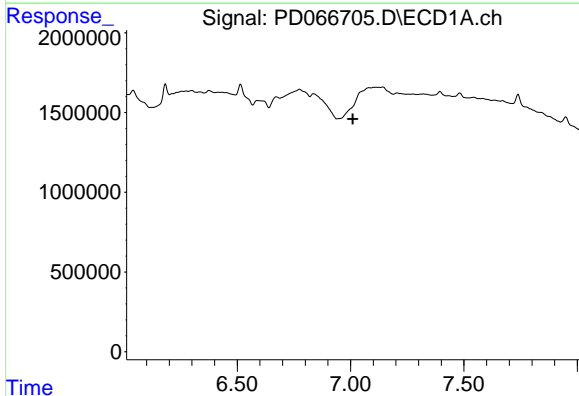
R.T.: 0.000 min
 Exp R.T.: 6.280 min
 Response: 0
 Conc: N.D.

Instrument :
 ECD_D
 ClientSampleId :



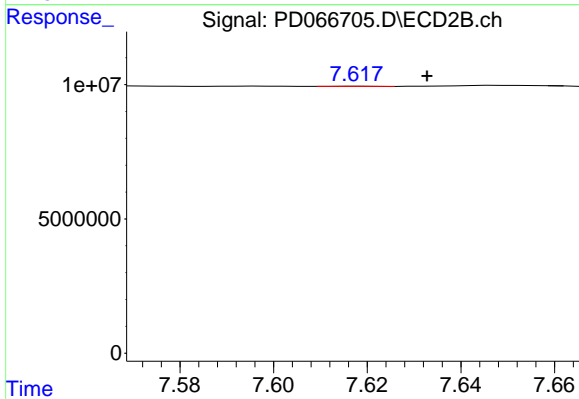
#24 Toxaphene-3

R.T.: 7.120 min
 Delta R.T.: -0.010 min
 Response: 1015399
 Conc: 8.92 ng/ml



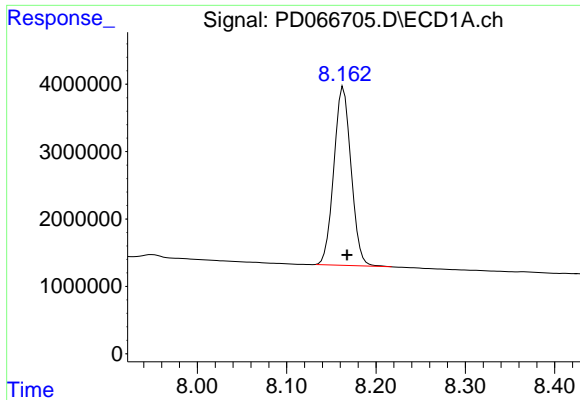
#26 Toxaphene-5

R.T.: 0.000 min
 Exp R.T.: 7.010 min
 Response: 0
 Conc: N.D.



#26 Toxaphene-5

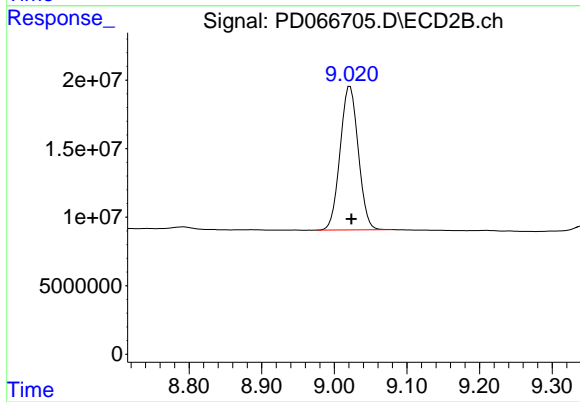
R.T.: 7.618 min
 Delta R.T.: -0.015 min
 Response: 45131
 Conc: 0.53 ng/ml



#27 Decachlorobiphenyl

R.T.: 8.164 min
Delta R.T.: -0.004 min
Response: 35490794
Conc: 30.29 ng/ml

Instrument :
ECD_D
ClientSampleId :



#27 Decachlorobiphenyl

R.T.: 9.022 min
Delta R.T.: -0.002 min
Response: 182202966
Conc: 34.94 ng/ml