

Data Path : Z:\pestpcbsrv\HPCHEM1\ECD_D\Data\PD110320\
 Data File : PD060053.D
 Signal(s) : Signal #1: ECD1A.ch Signal #2: ECD2B.ch
 Acq On : 03 Nov 2020 14:34
 Operator : DD\AJ
 Sample : INDB401
 Misc :
 ALS Vial : 16 Sample Multiplier: 1

Instrument :
 ECD_D
 ClientSampleId :

Integration File signal 1: autoint1.e
 Integration File signal 2: autoint2.e
 Quant Time: Nov 04 03:28:42 2020
 Quant Method : Z:\pestpcbsrv\HPCHEM1\ECD_D\Method\PD110320CLP.M
 Quant Title : GC Extractables
 QLast Update : Wed Nov 04 03:26:29 2020
 Response via : Initial Calibration
 Integrator: ChemStation

Volume Inj. : 1 µl
 Signal #1 Phase : ZB-MR2 Signal #2 Phase: ZB-MR1
 Signal #1 Info : 30M x 0.32mm x0.2 Signal #2 Info : 30M x 0.32mm x 0.50µm

	Compound	RT#1	RT#2	Resp#1	Resp#2	ng/ml	ng/ml

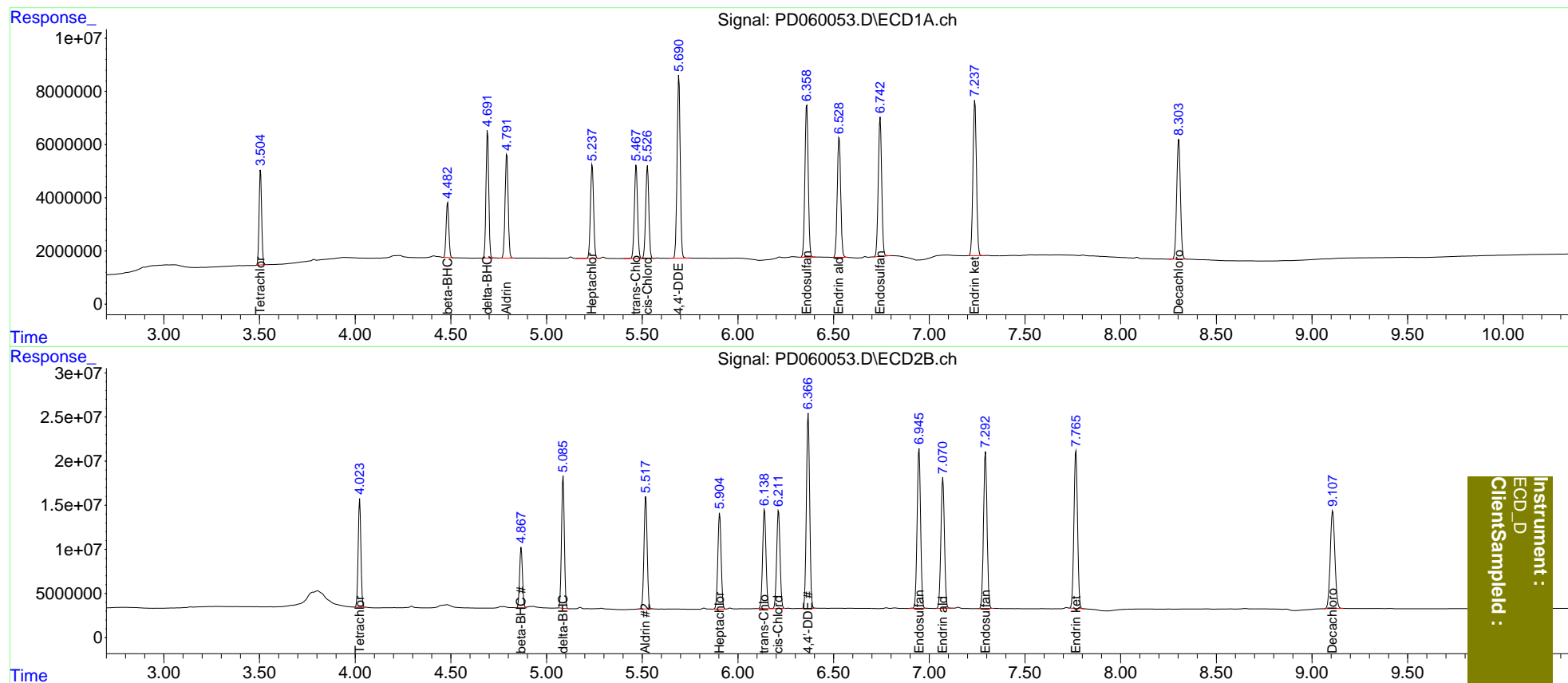
System Monitoring Compounds							
1)	SA Tetrachlo...	3.505	4.024	33127126	120.4E6	37.949	39.181
27)	SA Decachlor...	8.304	9.109	60936363	187.8E6	73.982	76.254
Target Compounds							
5)	MB Aldrin	4.792	5.518	43881720	147.1E6	37.754	38.902
6)	B beta-BHC	4.483	4.868	20364050	71331540	37.763	37.764
7)	B delta-BHC	4.692	5.087	47788882	154.0E6	38.007	41.196
8)	B Heptachlo...	5.239	5.905	40227019	130.9E6	37.590	39.223
10)	B trans-Chl...	5.468	6.139	40412556	137.4E6	37.538	39.451
11)	B cis-Chlor...	5.527	6.212	40118651	136.7E6	37.410	39.241
12)	B 4,4'-DDE	5.692	6.367	78472225	265.1E6	76.299	80.437
15)	B Endosulfa...	6.360	6.947	68957688	228.1E6	75.815	79.336
18)	B Endrin al...	6.529	7.071	56396820	190.4E6	75.384	77.797
19)	B Endosulfa...	6.744	7.294	64922229	229.0E6	75.201	78.166
21)	B Endrin ke...	7.239	7.766	74507798	234.6E6	74.131	78.537

(f)=RT Delta > 1/2 Window (#)=Amounts differ by > 25% (m)=manual int.

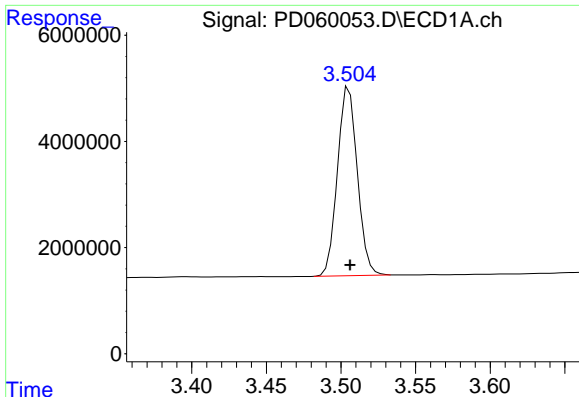
Data Path : Z:\pestpcbsrv\HPCHEM1\ECD_D\Data\PD110320\
 Data File : PD060053.D
 Signal(s) : Signal #1: ECD1A.ch Signal #2: ECD2B.ch
 Acq On : 03 Nov 2020 14:34
 Operator : DD\AJ
 Sample : INDB401
 Misc :
 ALS Vial : 16 Sample Multiplier: 1

Integration File signal 1: autoint1.e
 Integration File signal 2: autoint2.e
 Quant Time: Nov 04 03:28:42 2020
 Quant Method : Z:\pestpcbsrv\HPCHEM1\ECD_D\Method\PD110320CLP.M
 Quant Title : GC Extractables
 QLast Update : Wed Nov 04 03:26:29 2020
 Response via : Initial Calibration
 Integrator: ChemStation

Volume Inj. : 1 µl
 Signal #1 Phase : ZB-MR2 Signal #2 Phase: ZB-MR1
 Signal #1 Info : 30M x 0.32mm x0.2 Signal #2 Info : 30M x 0.32mm x 0.50µm



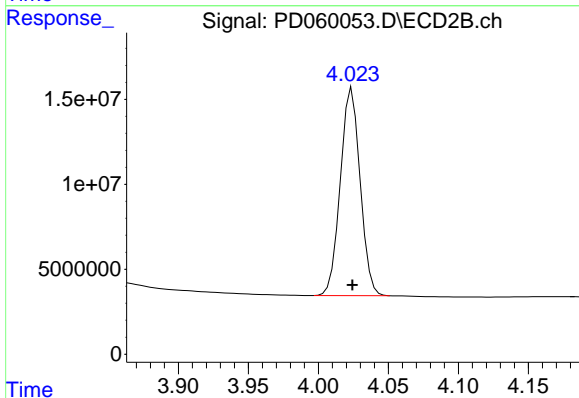
Instrument :
 ECD_D
 ClientSampleId :



#1 Tetrachloro-m-xylene

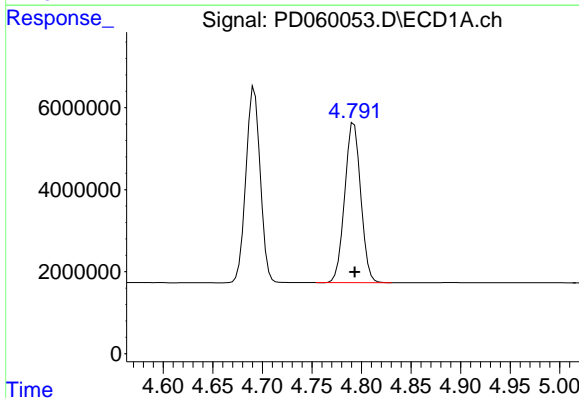
R.T.: 3.505 min
 Delta R.T.: 0.000 min
 Response: 33127126
 Conc: 37.95 ng/ml

Instrument :
 ECD_D
 ClientSampleId :



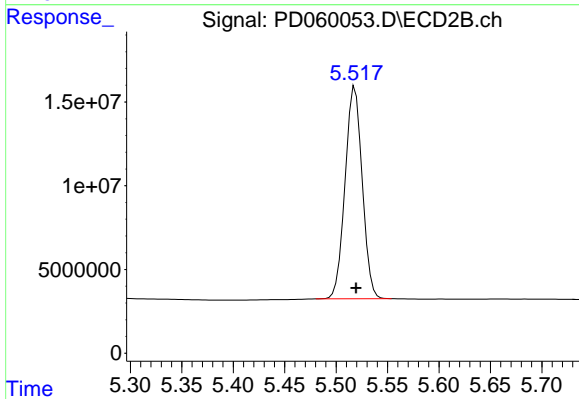
#1 Tetrachloro-m-xylene

R.T.: 4.024 min
 Delta R.T.: 0.000 min
 Response: 120400690
 Conc: 39.18 ng/ml



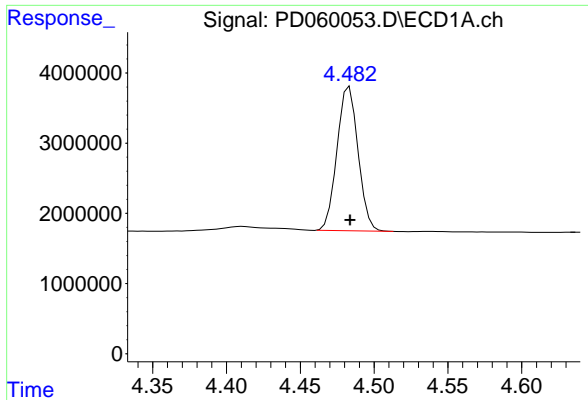
#5 Aldrin

R.T.: 4.792 min
 Delta R.T.: 0.000 min
 Response: 43881720
 Conc: 37.75 ng/ml



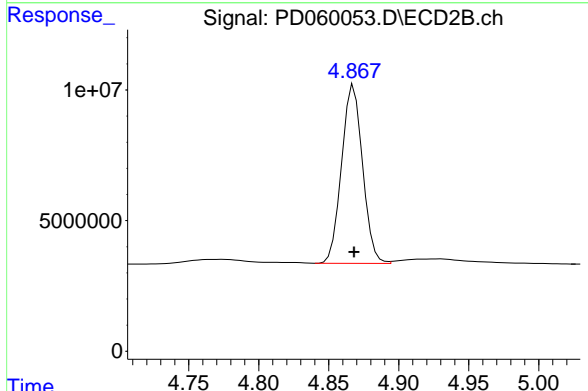
#5 Aldrin

R.T.: 5.518 min
 Delta R.T.: 0.000 min
 Response: 147124952
 Conc: 38.90 ng/ml

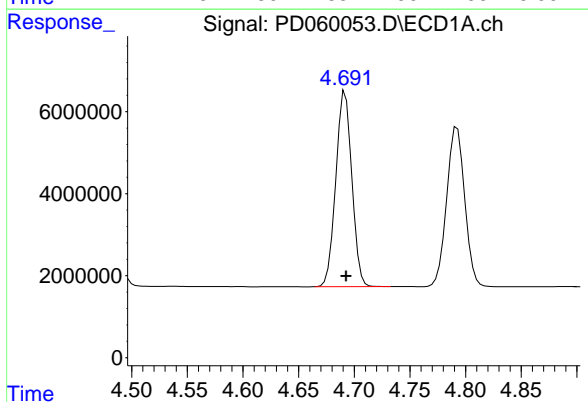


#6 beta-BHC
 R.T.: 4.483 min
 Delta R.T.: 0.000 min
 Response: 20364050
 Conc: 37.76 ng/ml

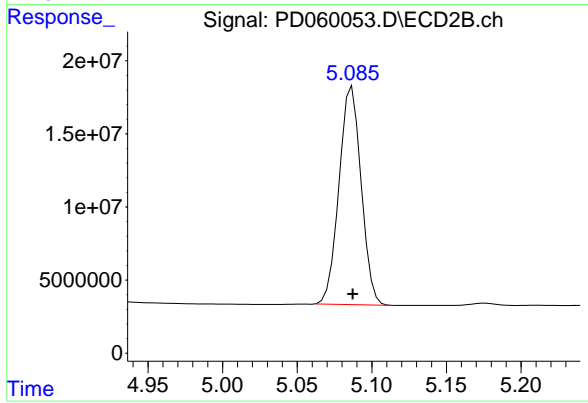
Instrument :
 ECD_D
 ClientSampled :



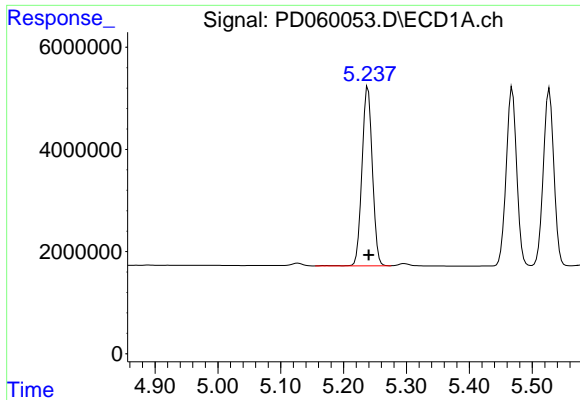
#6 beta-BHC
 R.T.: 4.868 min
 Delta R.T.: 0.000 min
 Response: 71331540
 Conc: 37.76 ng/ml



#7 delta-BHC
 R.T.: 4.692 min
 Delta R.T.: 0.000 min
 Response: 47788882
 Conc: 38.01 ng/ml

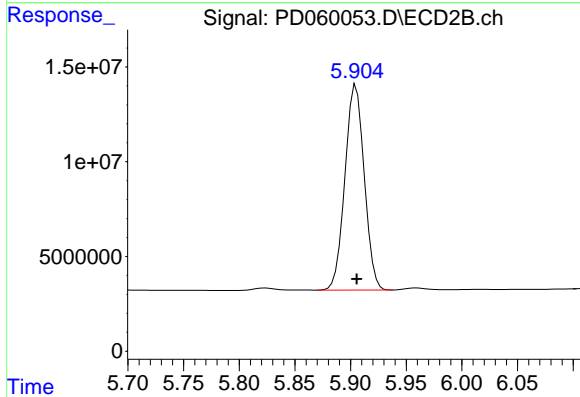


#7 delta-BHC
 R.T.: 5.087 min
 Delta R.T.: 0.000 min
 Response: 154009311
 Conc: 41.20 ng/ml

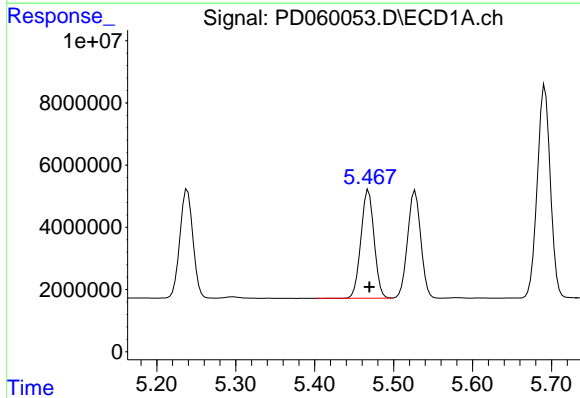


#8 Heptachlor epoxide
 R.T.: 5.239 min
 Delta R.T.: -0.001 min
 Response: 40227019
 Conc: 37.59 ng/ml

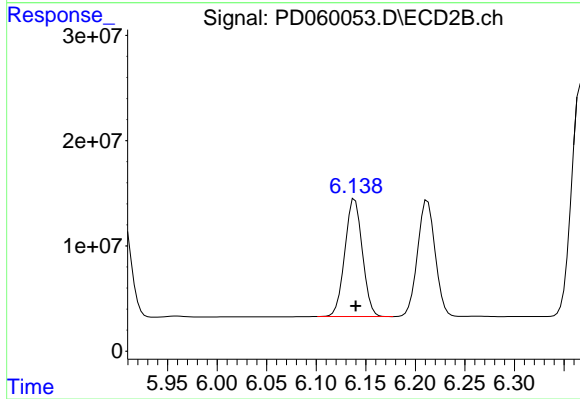
Instrument :
 ECD_D
 ClientSampled :



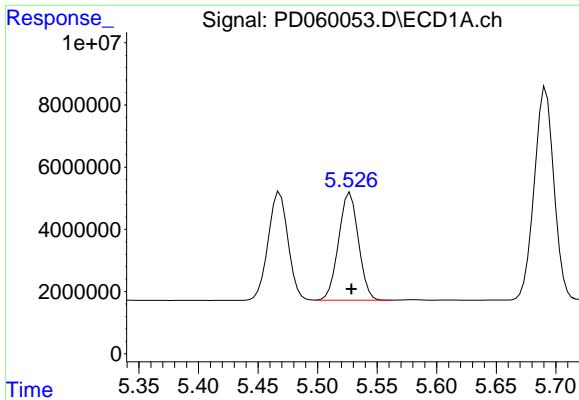
#8 Heptachlor epoxide
 R.T.: 5.905 min
 Delta R.T.: 0.000 min
 Response: 130878346
 Conc: 39.22 ng/ml



#10 trans-Chlordane
 R.T.: 5.468 min
 Delta R.T.: 0.000 min
 Response: 40412556
 Conc: 37.54 ng/ml

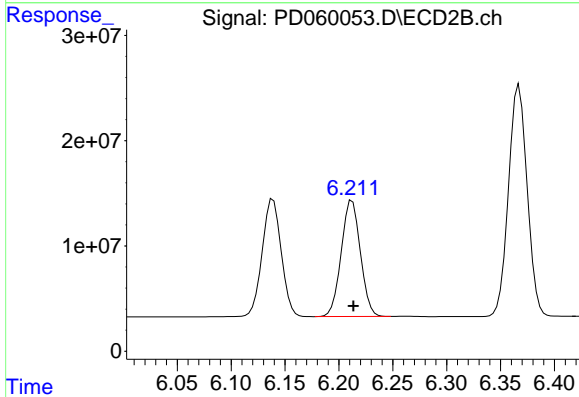


#10 trans-Chlordane
 R.T.: 6.139 min
 Delta R.T.: -0.001 min
 Response: 137435158
 Conc: 39.45 ng/ml

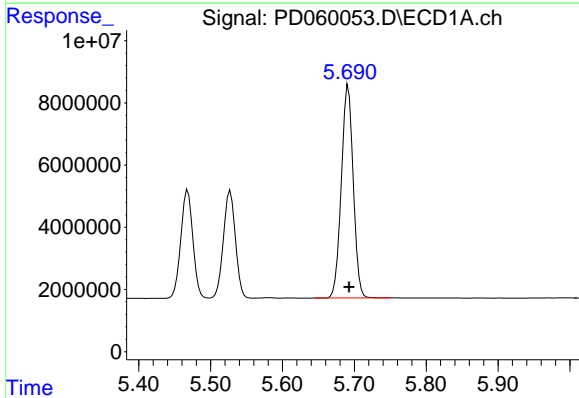


#11 cis-Chlordane
 R.T.: 5.527 min
 Delta R.T.: -0.001 min
 Response: 40118651
 Conc: 37.41 ng/ml

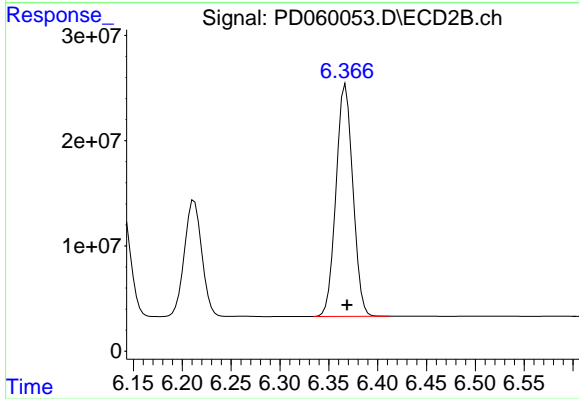
Instrument :
 ECD_D
 ClientSampled :



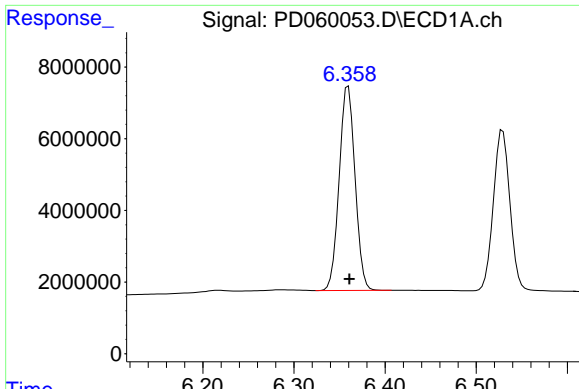
#11 cis-Chlordane
 R.T.: 6.212 min
 Delta R.T.: -0.001 min
 Response: 136673202
 Conc: 39.24 ng/ml



#12 4,4'-DDE
 R.T.: 5.692 min
 Delta R.T.: 0.000 min
 Response: 78472225
 Conc: 76.30 ng/ml

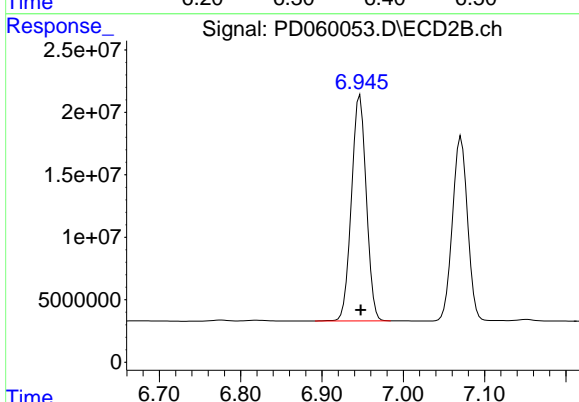


#12 4,4'-DDE
 R.T.: 6.367 min
 Delta R.T.: -0.001 min
 Response: 265130915
 Conc: 80.44 ng/ml

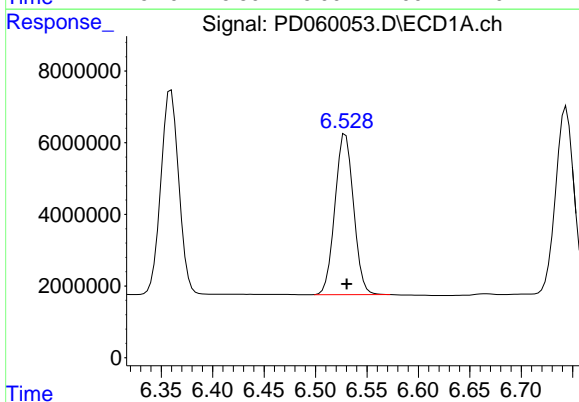


#15 Endosulfan II
 R.T.: 6.360 min
 Delta R.T.: -0.001 min
 Response: 68957688
 Conc: 75.82 ng/ml

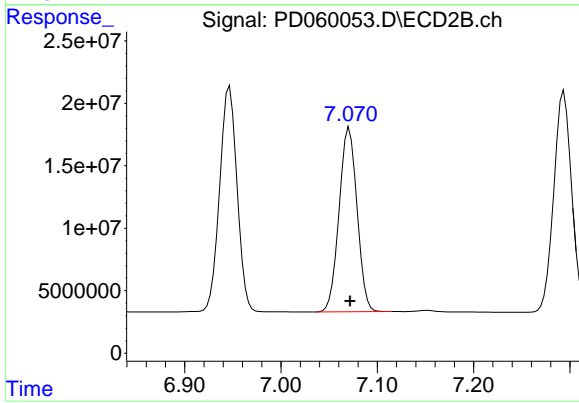
Instrument :
 ECD_D
 ClientSampled :



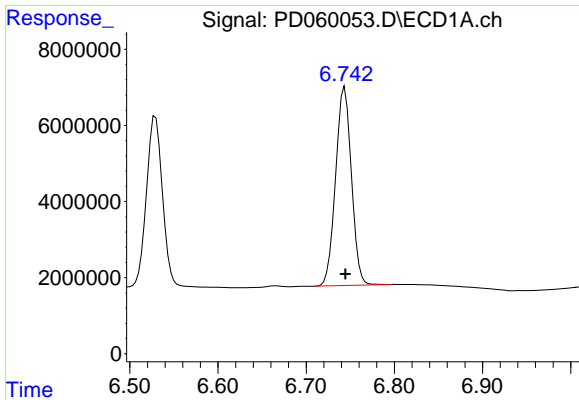
#15 Endosulfan II
 R.T.: 6.947 min
 Delta R.T.: -0.001 min
 Response: 228091484
 Conc: 79.34 ng/ml



#18 Endrin aldehyde
 R.T.: 6.529 min
 Delta R.T.: -0.001 min
 Response: 56396820
 Conc: 75.38 ng/ml

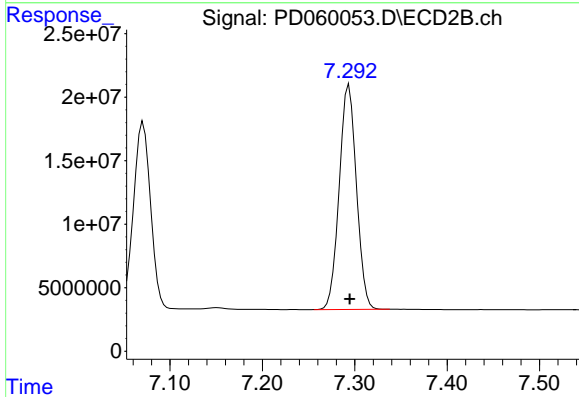


#18 Endrin aldehyde
 R.T.: 7.071 min
 Delta R.T.: 0.000 min
 Response: 190377802
 Conc: 77.80 ng/ml

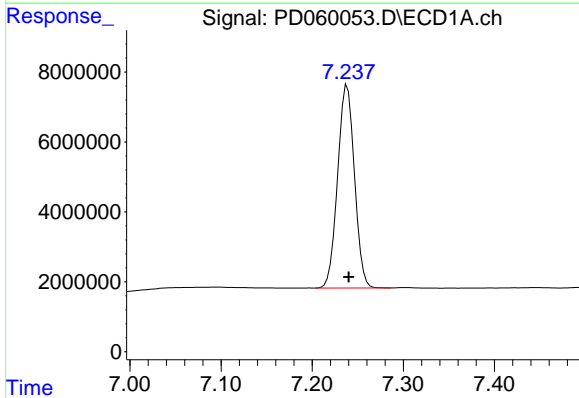


#19 Endosulfan Sulfate
 R.T.: 6.744 min
 Delta R.T.: 0.000 min
 Response: 64922229
 Conc: 75.20 ng/ml

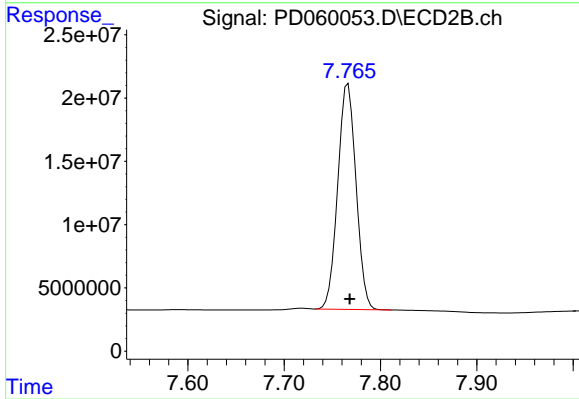
Instrument :
 ECD_D
 ClientSampled :



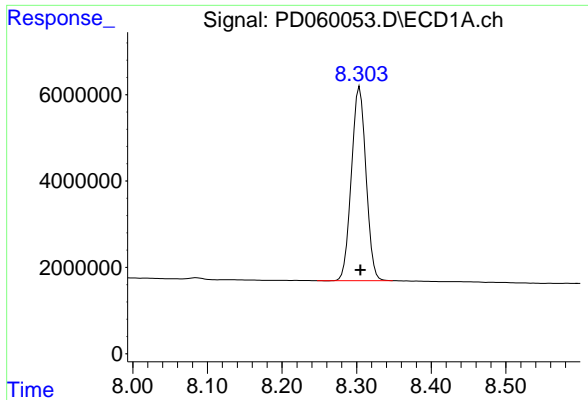
#19 Endosulfan Sulfate
 R.T.: 7.294 min
 Delta R.T.: 0.000 min
 Response: 228986875
 Conc: 78.17 ng/ml



#21 Endrin ketone
 R.T.: 7.239 min
 Delta R.T.: -0.002 min
 Response: 74507798
 Conc: 74.13 ng/ml



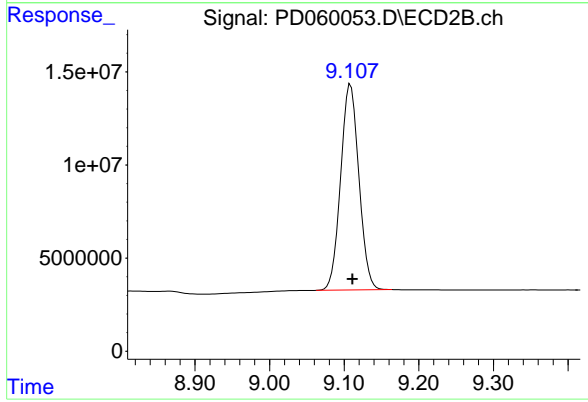
#21 Endrin ketone
 R.T.: 7.766 min
 Delta R.T.: -0.002 min
 Response: 234632797
 Conc: 78.54 ng/ml



#27 Decachlorobiphenyl

R.T.: 8.304 min
Delta R.T.: 0.000 min
Response: 60936363
Conc: 73.98 ng/ml

Instrument :
ECD_D
ClientSampleId :



#27 Decachlorobiphenyl

R.T.: 9.109 min
Delta R.T.: -0.002 min
Response: 187833244
Conc: 76.25 ng/ml