

Data Path : Z:\pestpcbsrv\HPCHEM1\ECD_D\Data\PD110320\
 Data File : PD060052.D
 Signal(s) : Signal #1: ECD1A.ch Signal #2: ECD2B.ch
 Acq On : 03 Nov 2020 14:20
 Operator : DD\AJ
 Sample : INDA401
 Misc :
 ALS Vial : 15 Sample Multiplier: 1

Instrument :
 ECD_D
 ClientSampleId :
 INDA401

Integration File signal 1: autoint1.e
 Integration File signal 2: autoint2.e
 Quant Time: Nov 04 03:54:32 2020
 Quant Method : Z:\pestpcbsrv\HPCHEM1\ECD_D\Method\PD110320CLP.M
 Quant Title : GC Extractables
 QLast Update : Wed Nov 04 03:53:19 2020
 Response via : Initial Calibration
 Integrator: ChemStation

Volume Inj. : 1 µl
 Signal #1 Phase : ZB-MR2 Signal #2 Phase: ZB-MR1
 Signal #1 Info : 30M x 0.32mm x0.2 Signal #2 Info : 30M x 0.32mm x 0.50µm

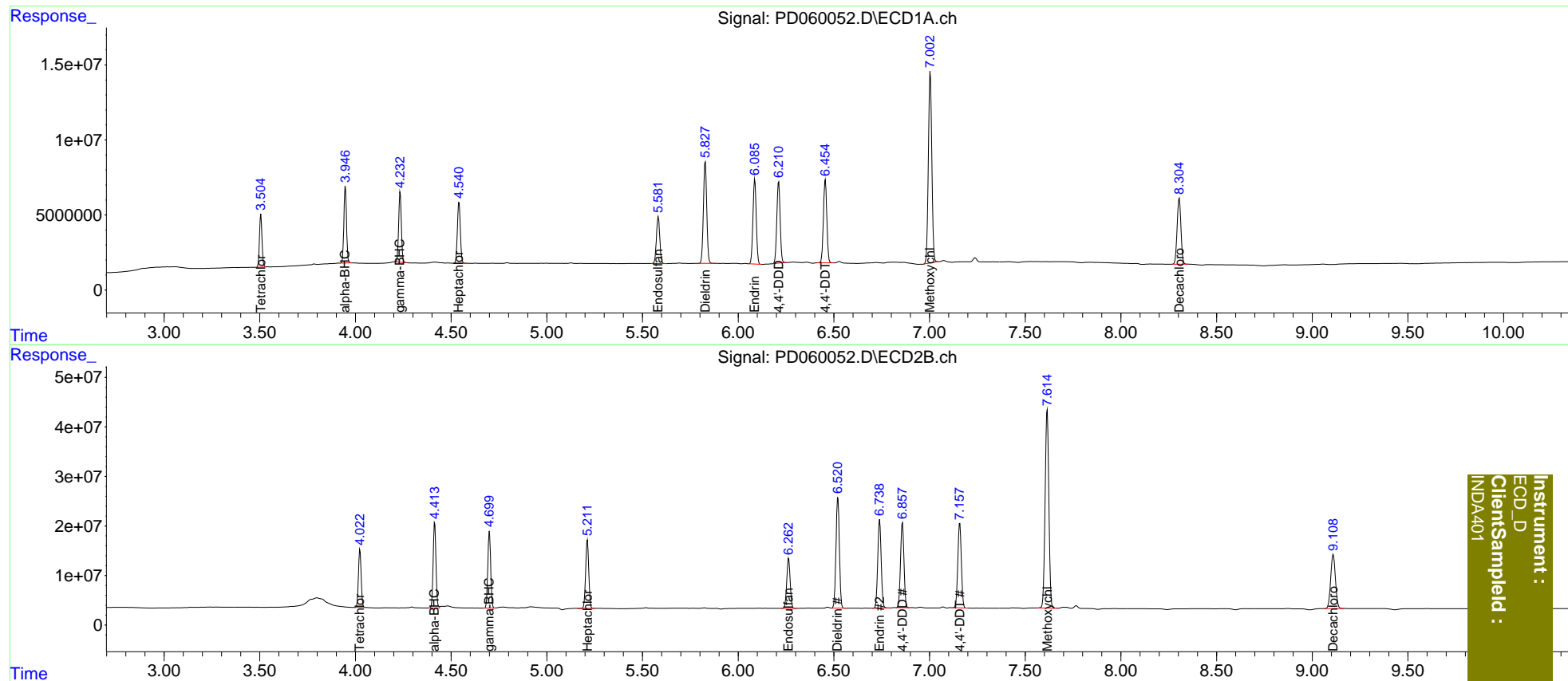
Compound	RT#1	RT#2	Resp#1	Resp#2	ng/ml	ng/ml
System Monitoring Compounds						
1) SA Tetrachlo...	3.506	4.024	32212293	115.8E6	37.293	38.211
27) SA Decachlor...	8.305	9.110	61114850	188.6E6	72.334	74.955
Target Compounds						
2) A alpha-BHC	3.947	4.414	48706163	176.6E6	37.917	39.377
3) MA gamma-BHC...	4.234	4.700	45647099	160.6E6	37.251	38.996
4) MA Heptachlor	4.541	5.212	43964217	156.6E6	37.063	38.799
9) A Endosulfan I	5.583	6.264	37924120	124.8E6	36.928	38.399
13) MA Dieldrin	5.828	6.521	81902338	276.8E6	75.144	77.921
14) MA Endrin	6.087	6.739	67839009	222.8E6	74.719	78.229
16) A 4,4'-DDD	6.212	6.858	65557658	214.1E6	74.458	78.378
17) MA 4,4'-DDT	6.455	7.158	68455038	219.5E6	75.276	79.400
20) A Methoxychlor	7.004	7.615	160.0E6	543.1E6	371.465	377.768

(f)=RT Delta > 1/2 Window (#)=Amounts differ by > 25% (m)=manual int.

Data Path : Z:\pestpcbsrv\HPCHEM1\ECD_D\Data\PD110320\
 Data File : PD060052.D
 Signal(s) : Signal #1: ECD1A.ch Signal #2: ECD2B.ch
 Acq On : 03 Nov 2020 14:20
 Operator : DD\AJ
 Sample : INDA401
 Misc :
 ALS Vial : 15 Sample Multiplier: 1

Integration File signal 1: autoint1.e
 Integration File signal 2: autoint2.e
 Quant Time: Nov 04 03:54:32 2020
 Quant Method : Z:\pestpcbsrv\HPCHEM1\ECD_D\Method\PD110320CLP.M
 Quant Title : GC Extractables
 QLast Update : Wed Nov 04 03:53:19 2020
 Response via : Initial Calibration
 Integrator: ChemStation

Volume Inj. : 1 µl
 Signal #1 Phase : ZB-MR2 Signal #2 Phase: ZB-MR1
 Signal #1 Info : 30M x 0.32mm x0.2 Signal #2 Info : 30M x 0.32mm x 0.50µm



Instrument :
 ECD_D
 ClientSampleId :
 INDA401