

Data Path : Z:\pestpcbsrv\HPCHEM1\ECD_D\Data\PD110320\
 Data File : PD060046.D
 Signal(s) : Signal #1: ECD1A.ch Signal #2: ECD2B.ch
 Acq On : 03 Nov 2020 12:55
 Operator : DD\AJ
 Sample : INDA101
 Misc :
 ALS Vial : 9 Sample Multiplier: 1

Instrument :
 ECD_D
 ClientSampleId :
 INDA101

Integration File signal 1: autoint1.e
 Integration File signal 2: autoint2.e
 Quant Time: Nov 04 03:59:51 2020
 Quant Method : Z:\pestpcbsrv\HPCHEM1\ECD_D\Method\PD110320CLP.M
 Quant Title : GC Extractables
 QLast Update : Wed Nov 04 03:53:19 2020
 Response via : Initial Calibration
 Integrator: ChemStation

Volume Inj. : 1 µl
 Signal #1 Phase : ZB-MR2 Signal #2 Phase: ZB-MR1
 Signal #1 Info : 30M x 0.32mm x0.2 Signal #2 Info : 30M x 0.32mm x 0.50µm

Compound	RT#1	RT#2	Resp#1	Resp#2	ng/ml	ng/ml

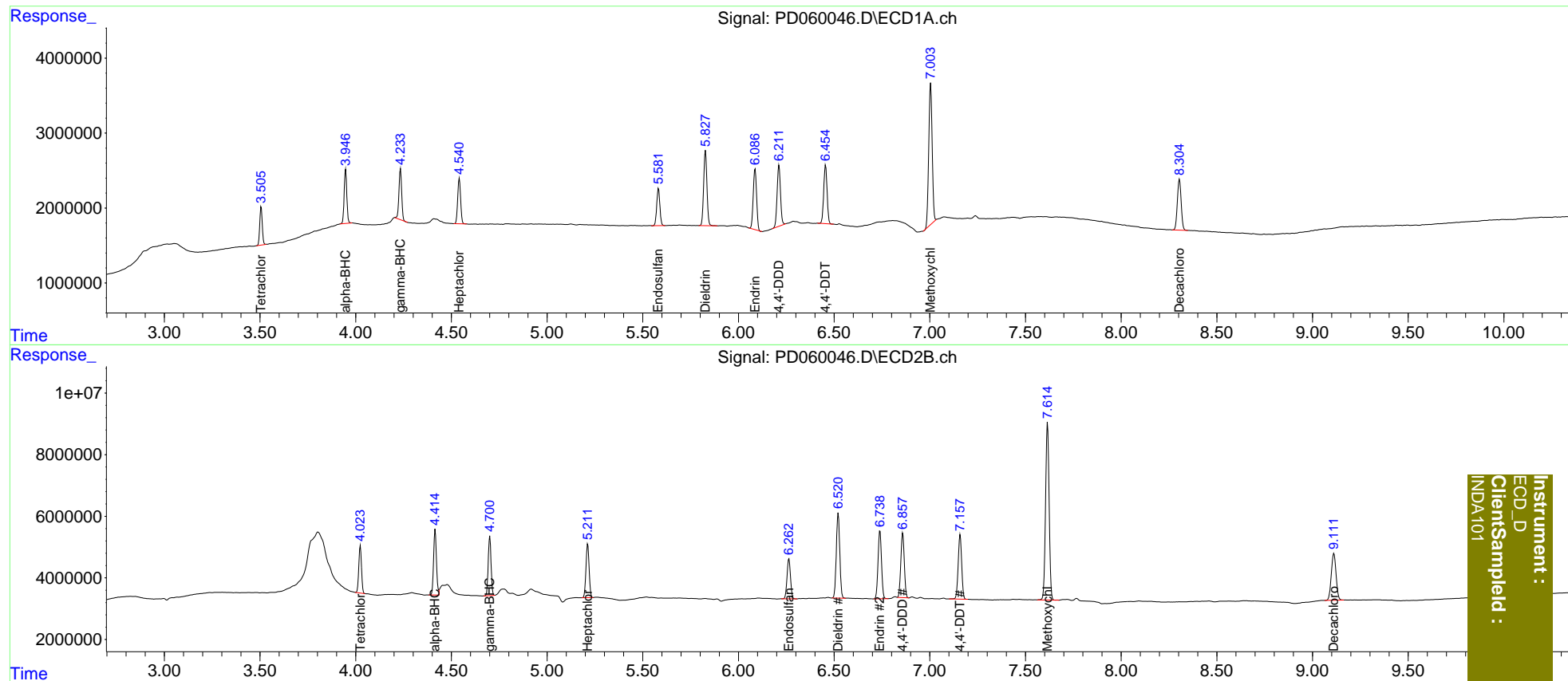
System Monitoring Compounds						
1) SA Tetrachlo...	3.506	4.024	4692001	15035564	5.432	4.960
27) SA Decachlor...	8.305	9.112	9397159	26367043	11.122	10.480
Target Compounds						
2) A alpha-BHC	3.947	4.415	6950804	22078140	5.411	4.922
3) MA gamma-BHC...	4.234	4.701	6700398	19770350	5.468	4.802
4) MA Heptachlor	4.541	5.213	6447108	19838360	5.435	4.915
9) A Endosulfan I	5.582	6.264	5640557	16320356	5.492	5.021
13) MA Dieldrin	5.828	6.521	11913670	34634611	10.931	9.749
14) MA Endrin	6.087	6.740	9910725	27831486	10.916	9.770
16) A 4,4'-DDD	6.212	6.859	9978402	26295142	11.333	9.626
17) MA 4,4'-DDT	6.455	7.159	9557374	26518047	10.510	9.591
20) A Methoxychlor	7.005	7.615	23420659	74591186	54.383	51.887

(f)=RT Delta > 1/2 Window (#)=Amounts differ by > 25% (m)=manual int.

Data Path : Z:\pestpcbsrv\HPCHEM1\ECD_D\Data\PD110320\
 Data File : PD060046.D
 Signal(s) : Signal #1: ECD1A.ch Signal #2: ECD2B.ch
 Acq On : 03 Nov 2020 12:55
 Operator : DD\AJ
 Sample : INDA101
 Misc :
 ALS Vial : 9 Sample Multiplier: 1

Integration File signal 1: autoint1.e
 Integration File signal 2: autoint2.e
 Quant Time: Nov 04 03:59:51 2020
 Quant Method : Z:\pestpcbsrv\HPCHEM1\ECD_D\Method\PD110320CLP.M
 Quant Title : GC Extractables
 QLast Update : Wed Nov 04 03:53:19 2020
 Response via : Initial Calibration
 Integrator: ChemStation

Volume Inj. : 1 µl
 Signal #1 Phase : ZB-MR2 Signal #2 Phase: ZB-MR1
 Signal #1 Info : 30M x 0.32mm x0.2 Signal #2 Info : 30M x 0.32mm x 0.50µm



Instrument :
 ECD_D
 ClientSampleId :
 INDA101