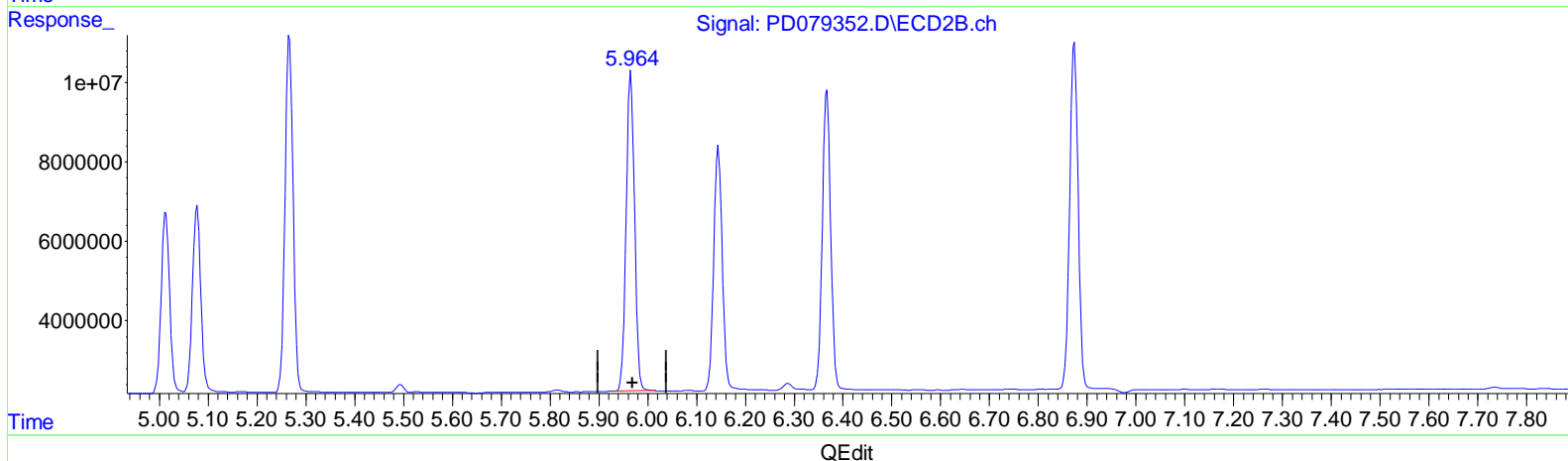
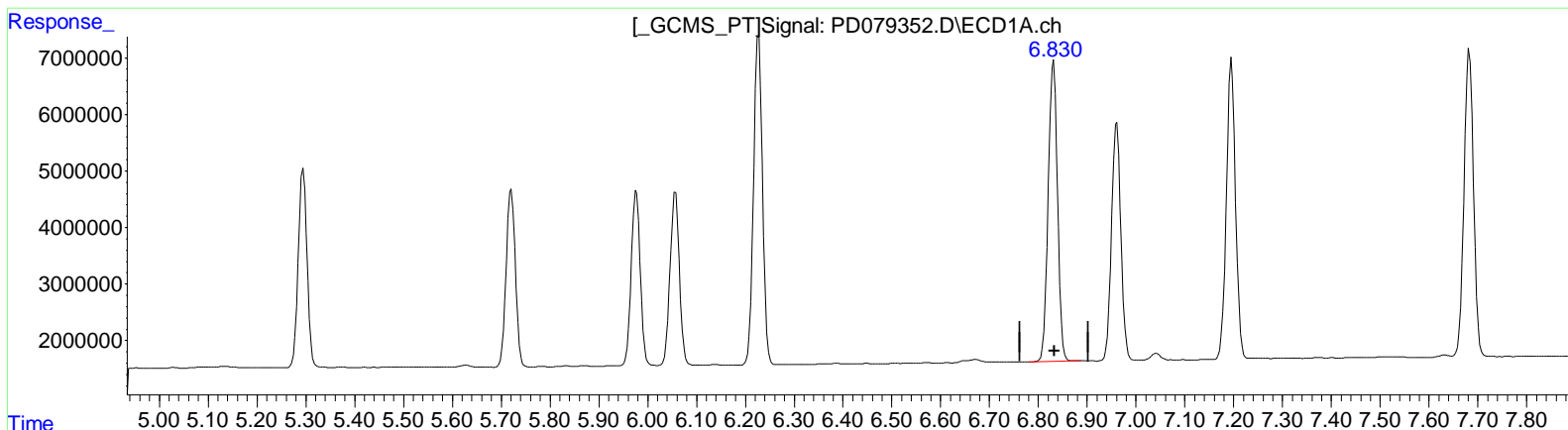


Data Path : Z:\pestpcbsrv\HPCHEM1\ECD_D\Data\PD110323\
 Data File : PD079352.D
 Signal(s) : Signal #1: ECD1A.ch Signal #2: ECD2B.ch
 Acq On : 01 Nov 2023 16:57
 Operator : ARVAJ
 Sample : INDB317
 Misc :
 ALS Vial : 17 Sample Multiplier: 1

Integration File signal 1: autoint1.e
 Integration File signal 2: autoint2.e
 Quant Time: Nov 01 22:15:47 2023
 Quant Method : Z:\pestpcbsrv\HPCHEM1\ECD_D\Method\PD101723CLP.M
 Quant Title : GC Extractables
 QLast Update : Tue Oct 17 09:38:01 2023
 Response via : Initial Calibration
 Integrator: ChemStation

Volume Inj. : 1 µl
 Signal #1 Phase : ZB-MR1 Signal #2 Phase: ZB-MR2
 Signal #1 Info : 30M x 0.32mm x 0.5 Signal #2 Info : 30M x 0.32mm x 0.25µm



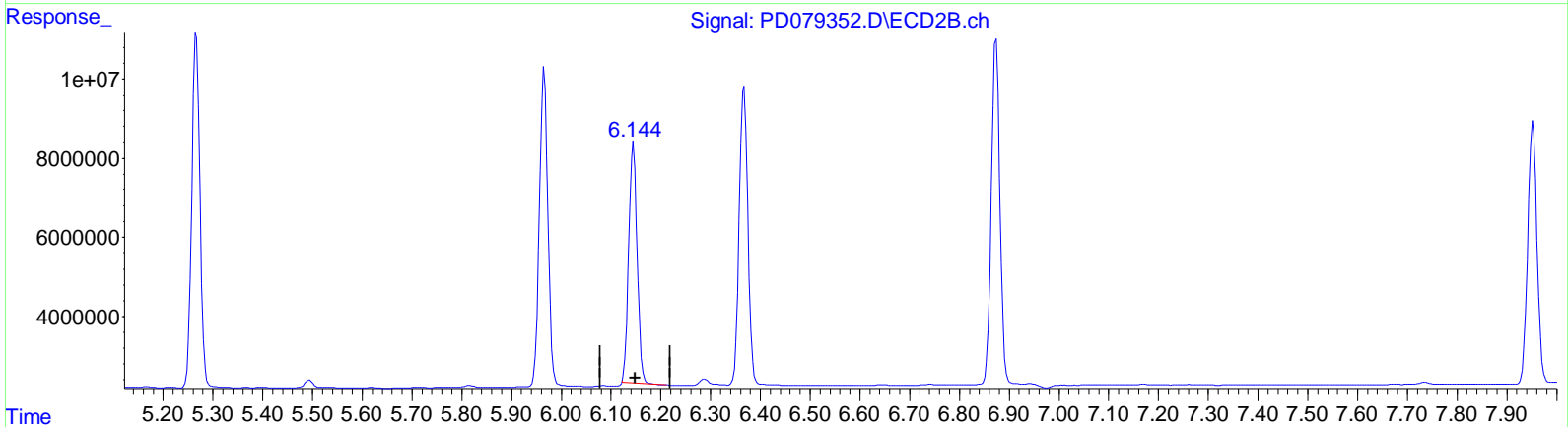
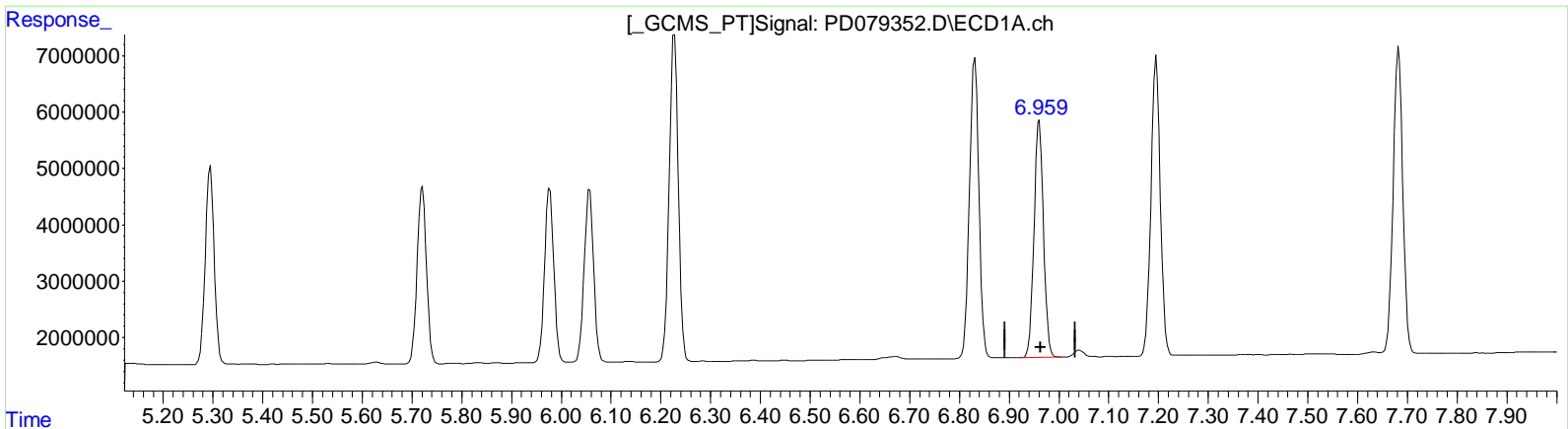
(15) Endosulfan II (B)
 6.831min 35.565 ng/ml
 response 70522117

(15) Endosulfan II #2 (B)
 5.964min 40.274 ng/ml m
 response 95828786

Data Path : Z:\pestpcbsrv\HPCHEM1\ECD_D\Data\PD110323\
 Data File : PD079352.D
 Signal(s) : Signal #1: ECD1A.ch Signal #2: ECD2B.ch
 Acq On : 01 Nov 2023 16:57
 Operator : ARVAJ
 Sample : INDB317
 Misc :
 ALS Vial : 17 Sample Multiplier: 1

Integration File signal 1: autoint1.e
 Integration File signal 2: autoint2.e
 Quant Time: Nov 01 22:15:47 2023
 Quant Method : Z:\pestpcbsrv\HPCHEM1\ECD_D\Method\PD101723CLP.M
 Quant Title : GC Extractables
 QLast Update : Tue Oct 17 09:38:01 2023
 Response via : Initial Calibration
 Integrator: ChemStation

Volume Inj. : 1 µl
 Signal #1 Phase : ZB-MR1 Signal #2 Phase: ZB-MR2
 Signal #1 Info : 30M x 0.32mm x0.5 Signal #2 Info : 30M x 0.32mm x 0.25µm



QEdit

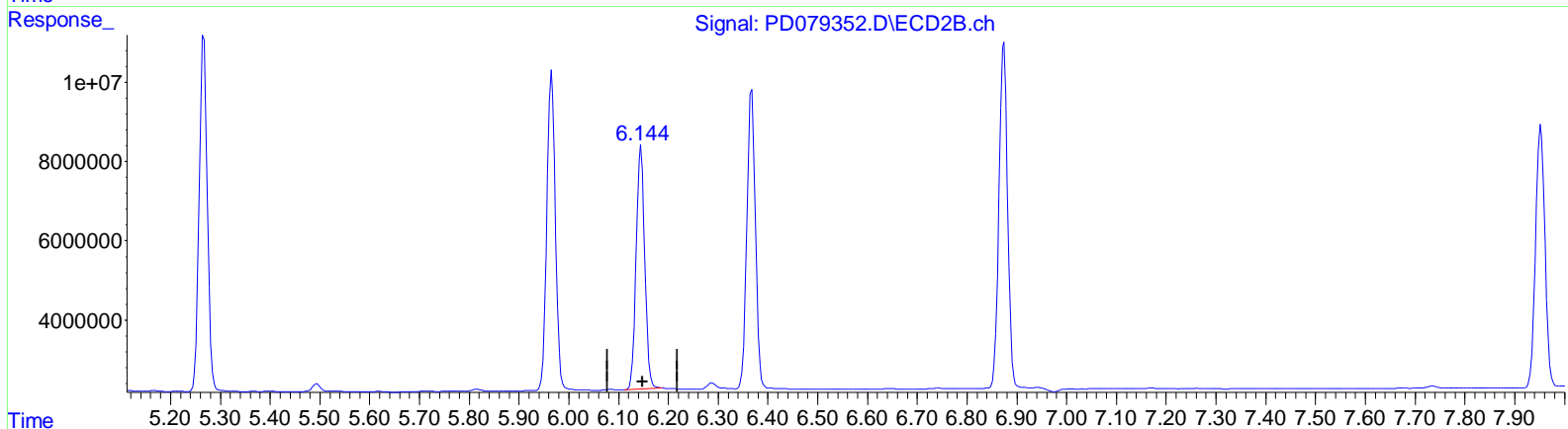
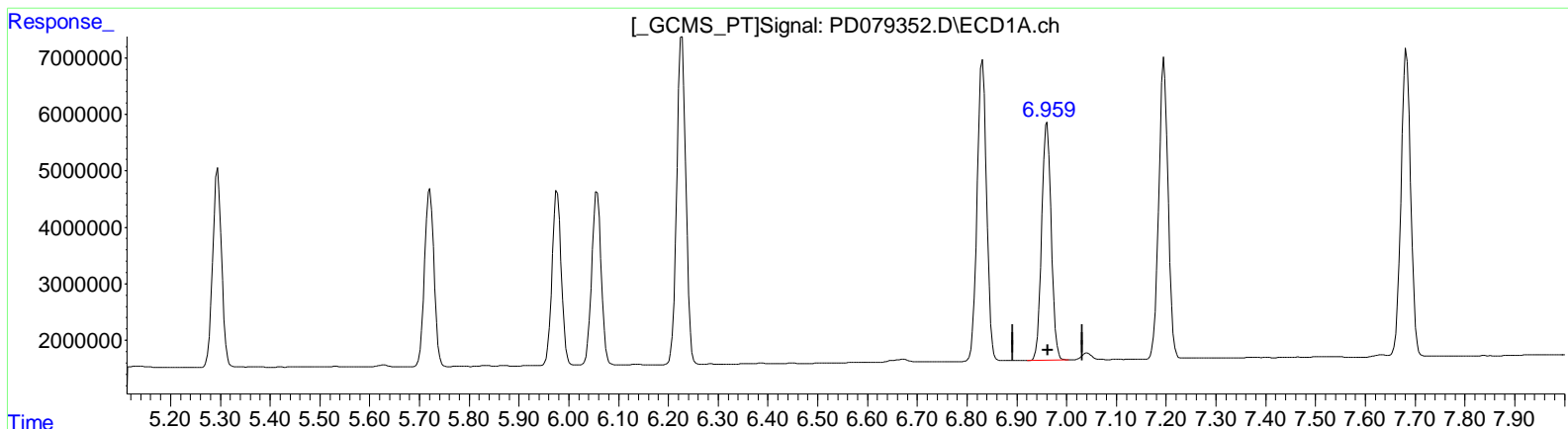
(18) Endrin aldehyde (B)
 6.961min 36.761 ng/ml
 response 55756112

(18) Endrin aldehyde #2 (B)
 6.145min 38.859 ng/ml
 response 72009801

Data Path : Z:\pestpcbsrv\HPCHEM1\ECD_D\Data\PD110323\
 Data File : PD079352.D
 Signal(s) : Signal #1: ECD1A.ch Signal #2: ECD2B.ch
 Acq On : 01 Nov 2023 16:57
 Operator : ARVAJ
 Sample : INDB317
 Misc :
 ALS Vial : 17 Sample Multiplier: 1

Integration File signal 1: autoint1.e
 Integration File signal 2: autoint2.e
 Quant Time: Nov 01 22:15:47 2023
 Quant Method : Z:\pestpcbsrv\HPCHEM1\ECD_D\Method\PD101723CLP.M
 Quant Title : GC Extractables
 QLast Update : Tue Oct 17 09:38:01 2023
 Response via : Initial Calibration
 Integrator: ChemStation

Volume Inj. : 1 µl
 Signal #1 Phase : ZB-MR1 Signal #2 Phase: ZB-MR2
 Signal #1 Info : 30M x 0.32mm x0.5 Signal #2 Info : 30M x 0.32mm x 0.25µm



QEdit

(18) Endrin aldehyde (B)
 6.961min 36.761 ng/ml
 response 55756112

(18) Endrin aldehyde #2 (B)
 6.144min 39.877 ng/ml m
 response 73895309

Data Path : Z:\pestpcbsrv\HPCHEM1\ECD_D\Data\PD110323\
 Data File : PD079352.D
 Signal(s) : Signal #1: ECD1A.ch Signal #2: ECD2B.ch
 Acq On : 01 Nov 2023 16:57
 Operator : AR\AJ
 Sample : INDB317
 Misc :
 ALS Vial : 17 Sample Multiplier: 1

Integration File signal 1: autoint1.e
 Integration File signal 2: autoint2.e
 Quant Time: Nov 01 22:15:47 2023
 Quant Method : Z:\pestpcbsrv\HPCHEM1\ECD_D\Method\PD101723CLP.M
 Quant Title : GC Extractables
 QLast Update : Tue Oct 17 09:38:01 2023
 Response via : Initial Calibration
 Integrator: ChemStation

Volume Inj. : 1 µl
 Signal #1 Phase : ZB-MR1 Signal #2 Phase: ZB-MR2
 Signal #1 Info : 30M x 0.32mm x 0.5 Signal #2 Info : 30M x 0.32mm x 0.25µm

Compound	RT#1	RT#2	Resp#1	Resp#2	ng/ml	ng/ml

System Monitoring Compounds						
1) SA Tetrachloro...	3.567	2.803	28036773	42401153	18.281	19.553
27) SA Decachloro...	9.116	7.953	67677681	85844472	35.682	36.807
Target Compounds						
5) MB Aldrin	5.295	4.261	44093664	59612783	17.834	19.350
6) B beta-BHC	4.551	3.931	20686823	29964039	18.142	20.717
7) B delta-BHC	4.801	4.163	45806697	65029252	17.459	19.830
8) B Heptachloro...	5.721	4.763	41364346	56719361	17.224	19.654
10) B trans-Chloro...	5.977	5.014	39785002	54539241	17.961	19.694
11) B cis-Chloro...	6.057	5.078	40634329	56495836	17.876	19.954
12) B 4,4'-DDE	6.227	5.267	73856030	101.6E6	35.853	38.837
15) B Endosulfan...	6.831	5.964	70522117	95828786	35.565	40.274m
18) B Endrin al...	6.961	6.144	55756112	73895309	36.761	39.877m
19) B Endosulfan...	7.196	6.367	69247973	89703189	36.034	38.921
21) B Endrin ke...	7.683	6.874	73027083	104.4E6	34.953	39.566

(f)=RT Delta > 1/2 Window (#)=Amounts differ by > 25% (m)=manual int.

Data Path : Z:\pestpcbsrv\HPCHEM1\ECD_D\Data\PD110323\
 Data File : PD079352.D
 Signal(s) : Signal #1: ECD1A.ch Signal #2: ECD2B.ch
 Acq On : 01 Nov 2023 16:57
 Operator : ARVAJ
 Sample : INDB317
 Misc :
 ALS Vial : 17 Sample Multiplier: 1

Integration File signal 1: autoint1.e
 Integration File signal 2: autoint2.e
 Quant Time: Nov 01 22:15:47 2023
 Quant Method : Z:\pestpcbsrv\HPCHEM1\ECD_D\Method\PD101723CLP.M
 Quant Title : GC Extractables
 QLast Update : Tue Oct 17 09:38:01 2023
 Response via : Initial Calibration
 Integrator: ChemStation

Volume Inj. : 1 µl
 Signal #1 Phase : ZB-MR1 Signal #2 Phase: ZB-MR2
 Signal #1 Info : 30M x 0.32mm x0.5 Signal #2 Info : 30M x 0.32mm x 0.25µm

