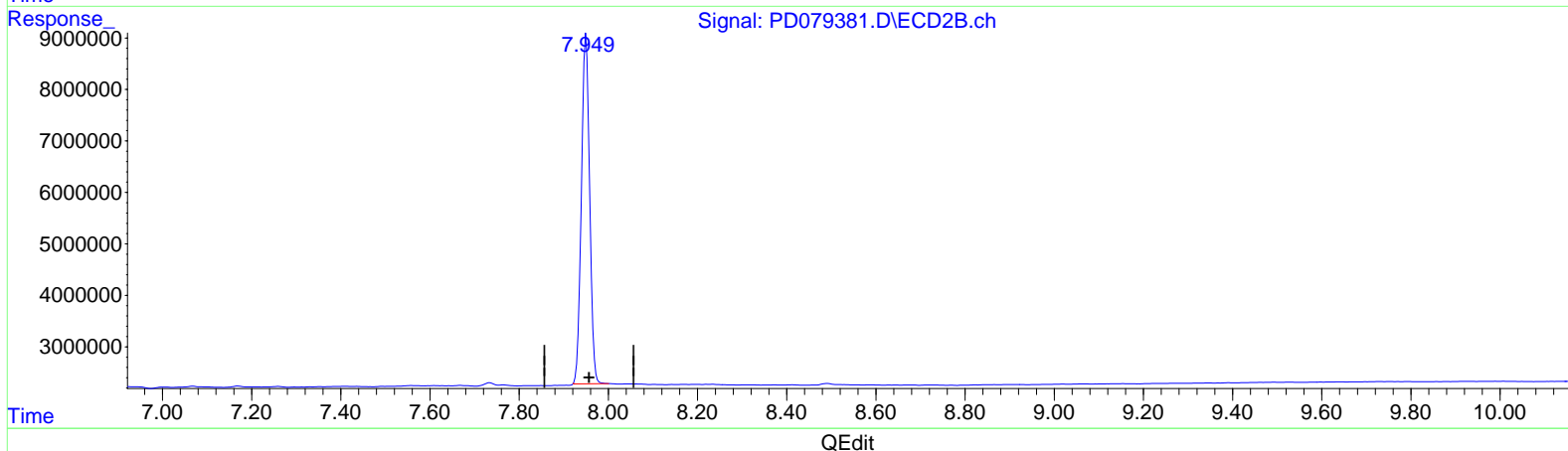
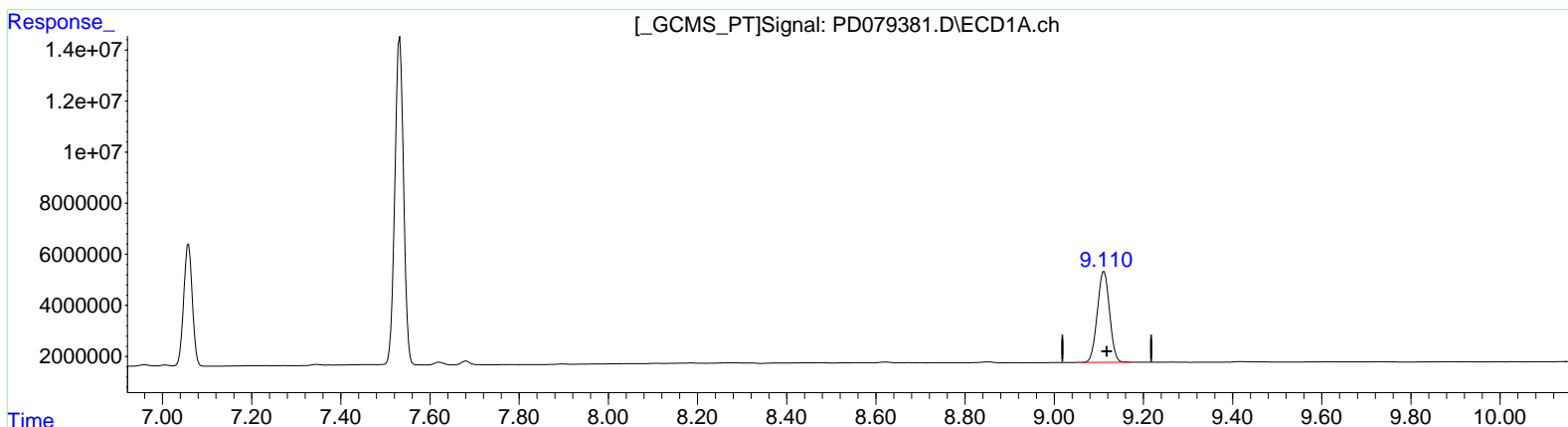


Data Path : Z:\pestpcbsrv\HPCHEM1\ECD_D\Data\PD110323\
 Data File : PD079381.D
 Signal(s) : Signal #1: ECD1A.ch Signal #2: ECD2B.ch
 Acq On : 01 Nov 2023 23:37
 Operator : AR\AJ
 Sample : 1NDA318
 Misc :
 ALS Vial : 16 Sample Multiplier: 1

Integration File signal 1: autoint1.e
 Integration File signal 2: autoint2.e
 Quant Time: Nov 02 01:17:29 2023
 Quant Method : Z:\pestpcbsrv\HPCHEM1\ECD_D\Method\PD101723CLP.M
 Quant Title : GC Extractables
 QLast Update : Tue Oct 17 09:38:01 2023
 Response via : Initial Calibration
 Integrator: ChemStation

Volume Inj. : 1 µl
 Signal #1 Phase : ZB-MR1 Signal #2 Phase: ZB-MR2
 Signal #1 Info : 30M x 0.32mm x0.5 Signal #2 Info : 30M x 0.32mm x 0.25µm



(27) Decachlorobiphenyl (SA)

9.112min 35.672 ng/ml

response 67658566

(27) Decachlorobiphenyl #2 (SA)

7.950min 37.392 ng/ml

response 87208535