

Data Path : Z:\pestpcbsrv\HPCHEM1\ECD\_D\Data\PD110323\  
 Data File : PD079379.D  
 Signal(s) : Signal #1: ECD1A.ch Signal #2: ECD2B.ch  
 Acq On : 01 Nov 2023 23:10  
 Operator : AR\AJ  
 Sample : 05133-01  
 Misc :  
 ALS Vial : 42 Sample Multiplier: 1

Instrument :  
 ECD\_D  
 ClientSampleId :

Integration File signal 1: autoint1.e  
 Integration File signal 2: autoint2.e  
 Quant Time: Nov 02 01:17:08 2023  
 Quant Method : Z:\pestpcbsrv\HPCHEM1\ECD\_D\Method\PD101723CLP.M  
 Quant Title : GC Extractables  
 QLast Update : Tue Oct 17 09:38:01 2023  
 Response via : Initial Calibration  
 Integrator: ChemStation

Volume Inj. : 1 µl  
 Signal #1 Phase : ZB-MR2 Signal #2 Phase: ZB-MR2  
 Signal #1 Info : 30M x 0.32mm x0.5 Signal #2 Info : 30M x 0.32mm x 0.25µm

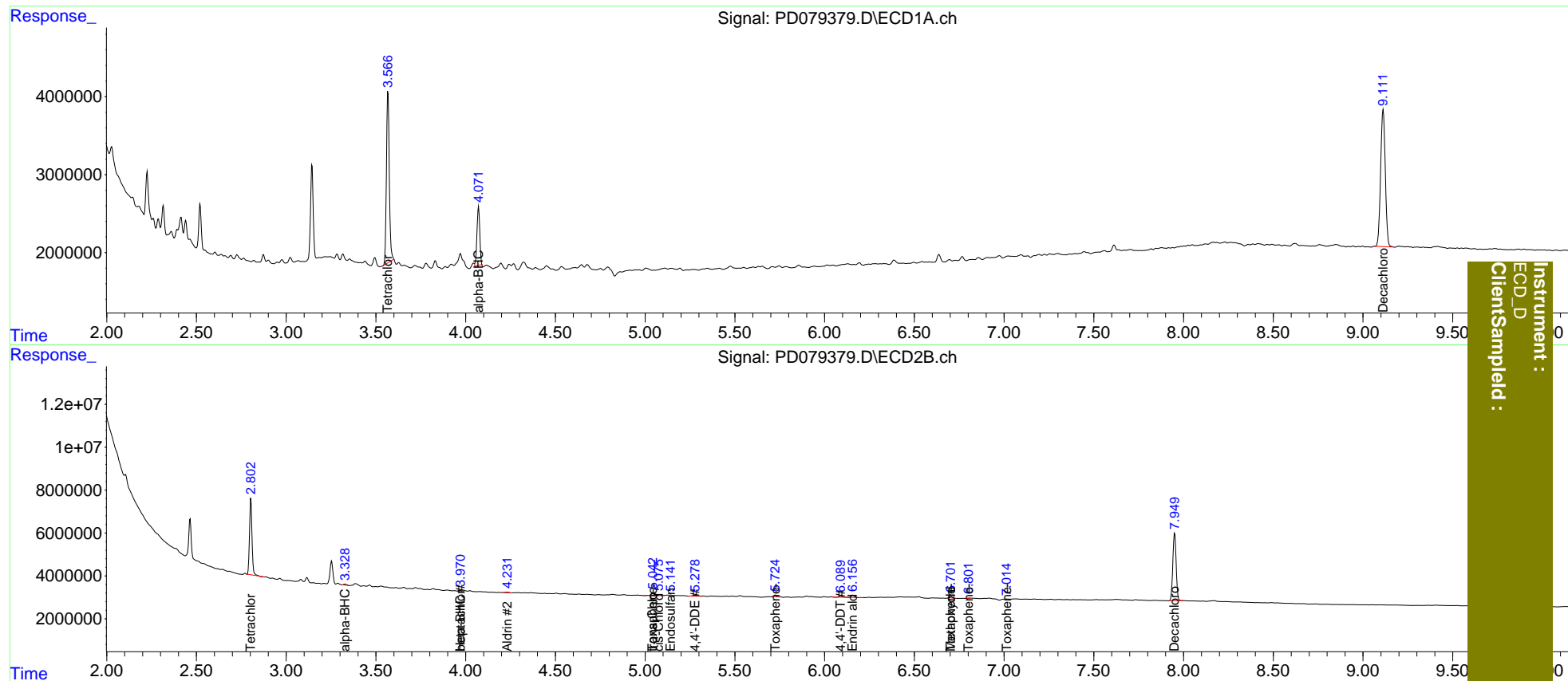
Compound	RT#1	RT#2	Resp#1	Resp#2	ng/ml	ng/ml
-----						
System Monitoring Compounds						
1) SA Tetrachlo...	3.567	2.803	24449809	34399916	15.942	15.863
27) SA Decachlor...	9.112	7.951	31860510	40582716	16.798	17.400
Target Compounds						
2) A alpha-BHC	4.072f	3.328	8228948	624338	3.158	0.183 #
3) MA gamma-BHC...	0.000	3.656	0	294403	N.D.	<MDL
4) MA Heptachlor	0.000	3.971	0	329431	N.D.	0.108
5) MB Aldrin	0.000	4.232f	0	417163	N.D.	0.135
6) B beta-BHC	0.000	3.971f	0	329431	N.D.	0.228
9) A Endosulfan I	0.000	5.142	0	334274	N.D.	0.132
10) B trans-Chl...	0.000	5.043	0	1703074	N.D.	0.615
11) B cis-Chlor...	0.000	5.077	0	544029	N.D.	0.192
12) B 4,4'-DDE	0.000	5.279	0	739239	N.D.	0.283
14) MA Endrin	0.000	5.689	0	111509	N.D.	<MDL
15) B Endosulfa...	0.000	5.927f	0	235704	N.D.	<MDL
17) MA 4,4'-DDT	0.000	6.090	0	629250	N.D.	0.279
18) B Endrin al...	0.000	6.157	0	1183378	N.D.	0.639
19) B Endosulfa...	0.000	6.312f	0	102596	N.D.	<MDL
20) A Methoxychlor	0.000	6.702f	0	536964	N.D.	0.440
22) Toxaphene-1	0.000	5.043	0	1703074	N.D.	110.290
23) Toxaphene-2	0.000	5.725	0	710498	N.D.	43.246
24) Toxaphene-3	0.000	6.702f	0	536964	N.D.	10.261
25) Toxaphene-4	0.000	6.803f	0	120860	N.D.	1.683
26) Toxaphene-5	0.000	7.015f	0	37499	N.D.	1.211

(f)=RT Delta > 1/2 Window (#)=Amounts differ by > 25% (m)=manual int.

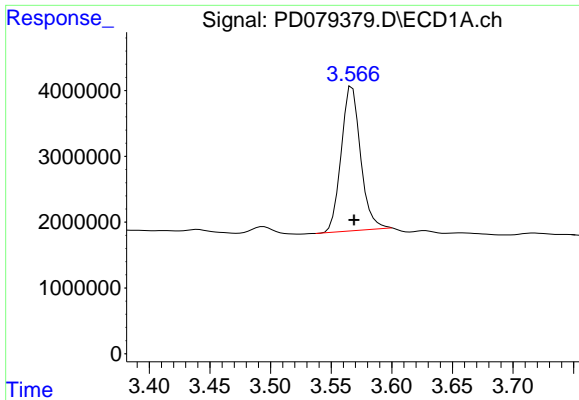
Data Path : Z:\pestpcbsrv\HPCHEM1\ECD\_D\Data\PD110323\  
 Data File : PD079379.D  
 Signal(s) : Signal #1: ECD1A.ch Signal #2: ECD2B.ch  
 Acq On : 01 Nov 2023 23:10  
 Operator : AR\AJ  
 Sample : 05133-01  
 Misc :  
 ALS Vial : 42 Sample Multiplier: 1

Integration File signal 1: autoint1.e  
 Integration File signal 2: autoint2.e  
 Quant Time: Nov 02 01:17:08 2023  
 Quant Method : Z:\pestpcbsrv\HPCHEM1\ECD\_D\Method\PD101723CLP.M  
 Quant Title : GC Extractables  
 QLast Update : Tue Oct 17 09:38:01 2023  
 Response via : Initial Calibration  
 Integrator: ChemStation

Volume Inj. : 1 µl  
 Signal #1 Phase : ZB-MR1 Signal #2 Phase: ZB-MR2  
 Signal #1 Info : 30M x 0.32mm x0.5 Signal #2 Info : 30M x 0.32mm x 0.25µm

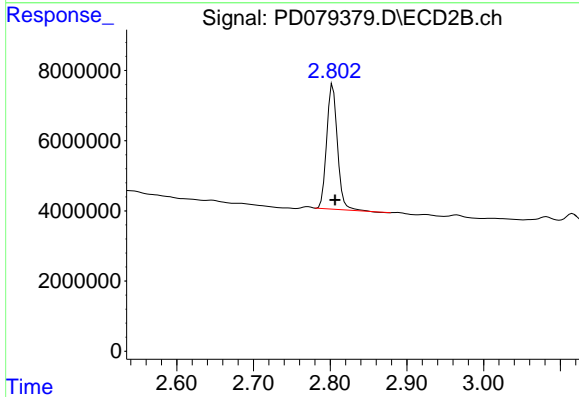


Instrument : ECD\_D  
 ClientSampled :

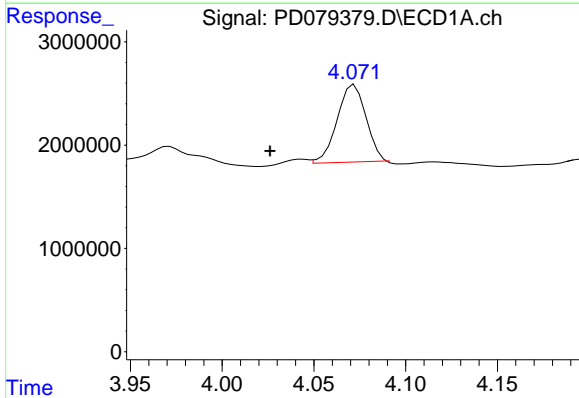


#1 Tetrachloro-m-xylene  
 R.T.: 3.567 min  
 Delta R.T.: -0.002 min  
 Response: 24449809  
 Conc: 15.94 ng/ml

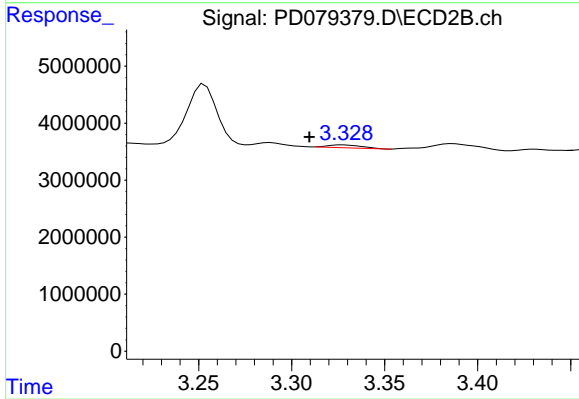
Instrument :  
 ECD\_D  
 ClientSampleId :



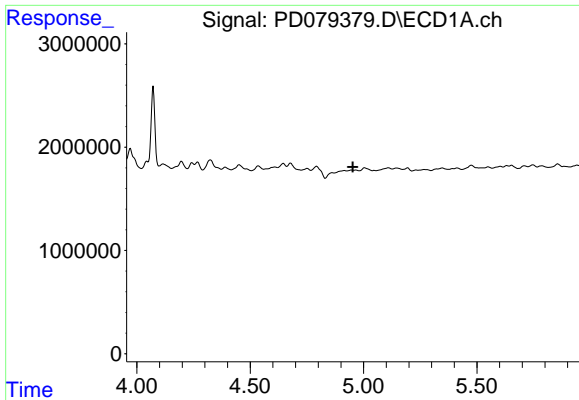
#1 Tetrachloro-m-xylene  
 R.T.: 2.803 min  
 Delta R.T.: -0.003 min  
 Response: 34399916  
 Conc: 15.86 ng/ml



#2 alpha-BHC  
 R.T.: 4.072 min  
 Delta R.T.: 0.046 min  
 Response: 8228948  
 Conc: 3.16 ng/ml



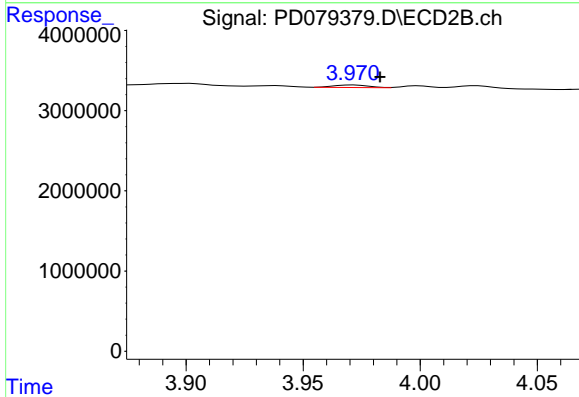
#2 alpha-BHC  
 R.T.: 3.328 min  
 Delta R.T.: 0.018 min  
 Response: 624338  
 Conc: 0.18 ng/ml



#4 Heptachlor

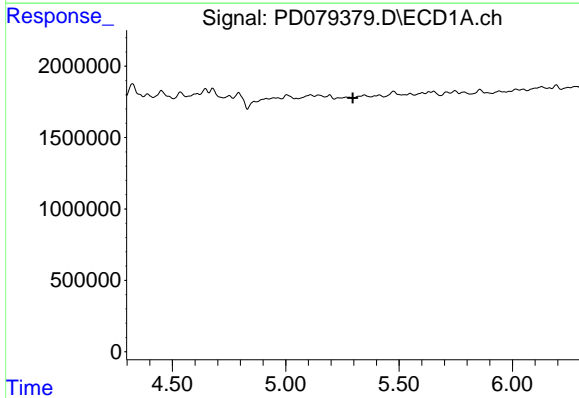
R.T.: 0.000 min  
 Exp R.T.: 4.953 min  
 Response: 0  
 Conc: N.D.

Instrument :  
 ECD\_D  
 ClientSampleId :



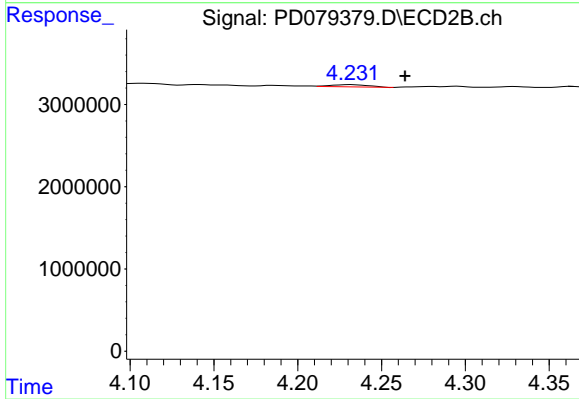
#4 Heptachlor

R.T.: 3.971 min  
 Delta R.T.: -0.011 min  
 Response: 329431  
 Conc: 0.11 ng/ml



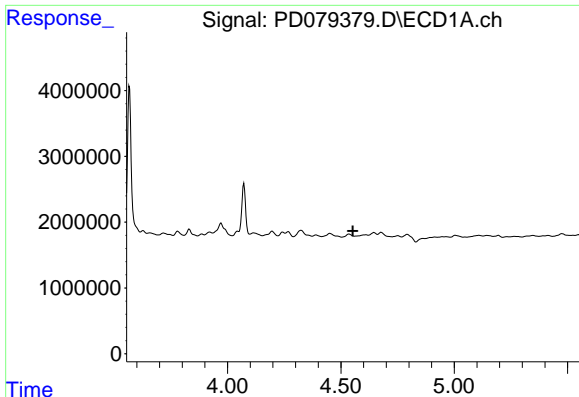
#5 Aldrin

R.T.: 0.000 min  
 Exp R.T.: 5.296 min  
 Response: 0  
 Conc: N.D.



#5 Aldrin

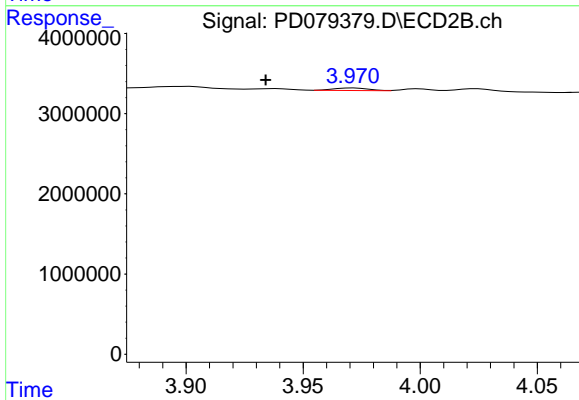
R.T.: 4.232 min  
 Delta R.T.: -0.032 min  
 Response: 417163  
 Conc: 0.14 ng/ml



#6 beta-BHC

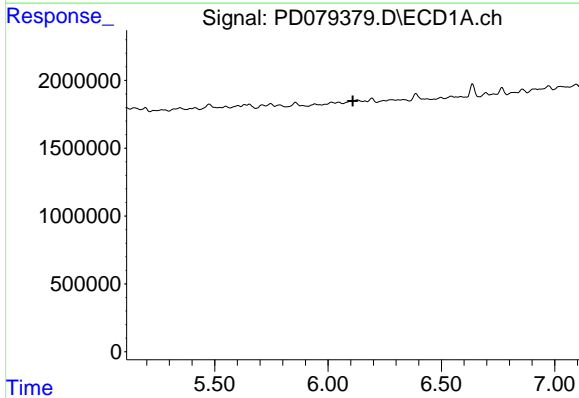
R.T.: 0.000 min  
 Exp R.T.: 4.552 min  
 Response: 0  
 Conc: N.D.

Instrument :  
 ECD\_D  
 ClientSampleId :



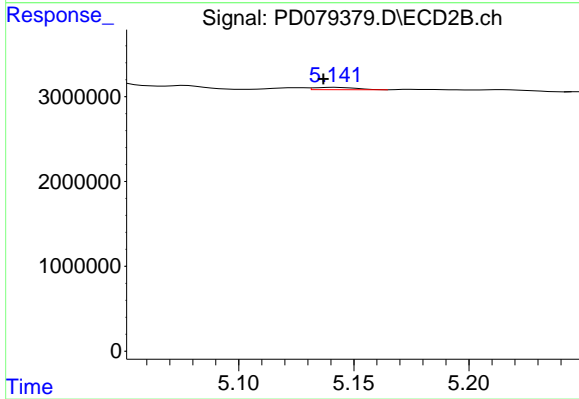
#6 beta-BHC

R.T.: 3.971 min  
 Delta R.T.: 0.037 min  
 Response: 329431  
 Conc: 0.23 ng/ml



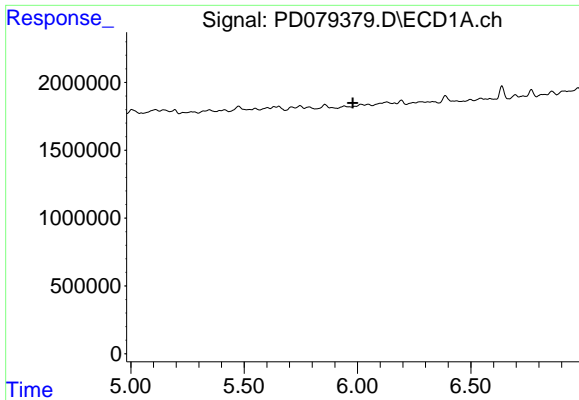
#9 Endosulfan I

R.T.: 0.000 min  
 Exp R.T.: 6.110 min  
 Response: 0  
 Conc: N.D.



#9 Endosulfan I

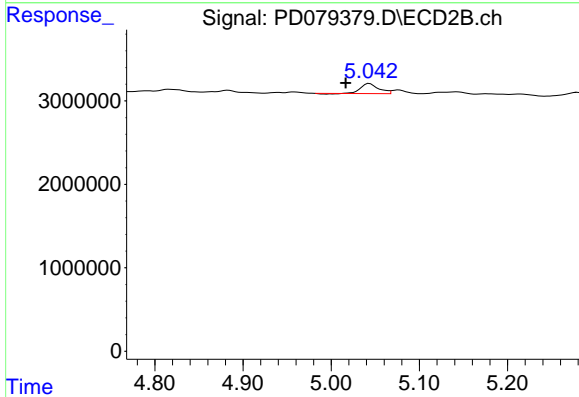
R.T.: 5.142 min  
 Delta R.T.: 0.006 min  
 Response: 334274  
 Conc: 0.13 ng/ml



#10 trans-Chlordane

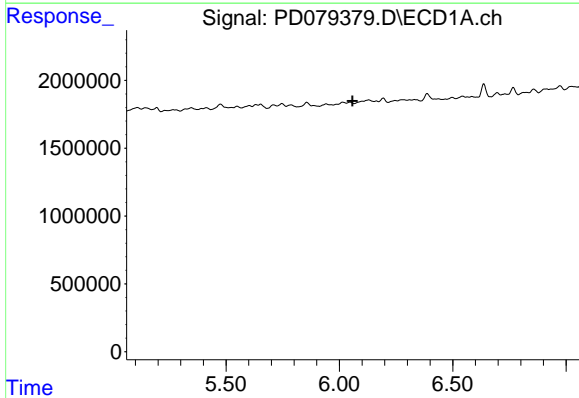
R.T.: 0.000 min  
 Exp R.T.: 5.979 min  
 Response: 0  
 Conc: N.D.

Instrument :  
 ECD\_D  
 ClientSampleId :



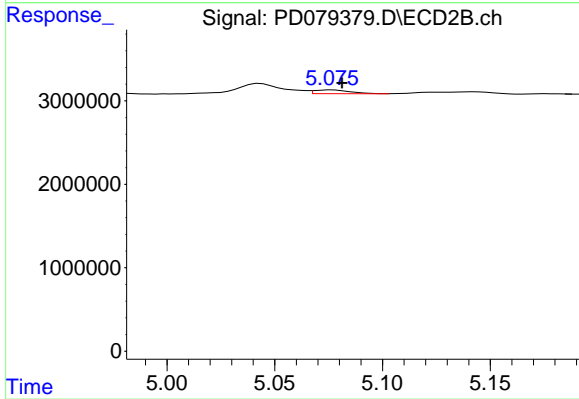
#10 trans-Chlordane

R.T.: 5.043 min  
 Delta R.T.: 0.027 min  
 Response: 1703074  
 Conc: 0.61 ng/ml



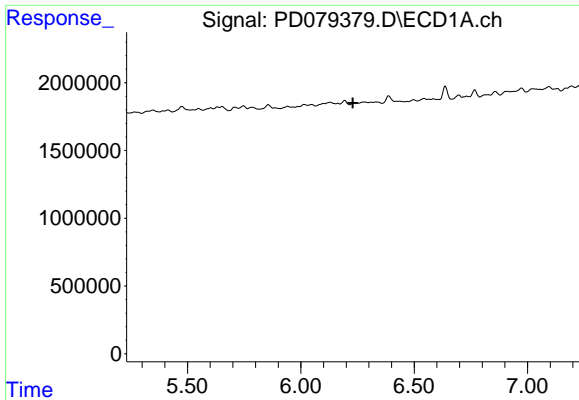
#11 cis-Chlordane

R.T.: 0.000 min  
 Exp R.T.: 6.058 min  
 Response: 0  
 Conc: N.D.



#11 cis-Chlordane

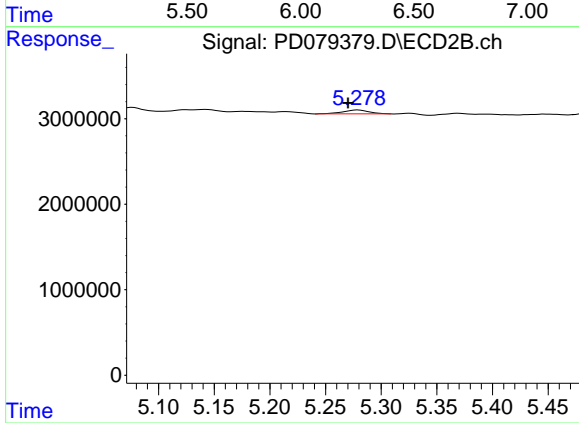
R.T.: 5.077 min  
 Delta R.T.: -0.004 min  
 Response: 544029  
 Conc: 0.19 ng/ml



#12 4,4'-DDE

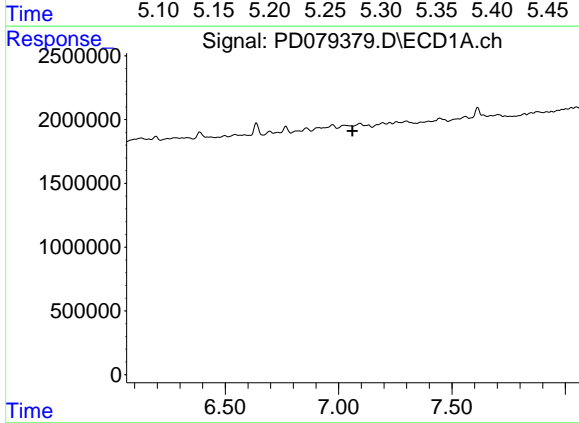
R.T.: 0.000 min  
 Exp R.T. : 6.229 min  
 Response: 0  
 Conc: N.D.

Instrument :  
 ECD\_D  
 ClientSampleId :



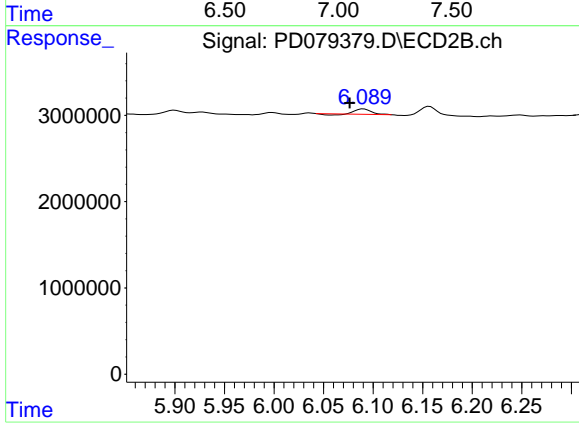
#12 4,4'-DDE

R.T.: 5.279 min  
 Delta R.T.: 0.009 min  
 Response: 739239  
 Conc: 0.28 ng/ml



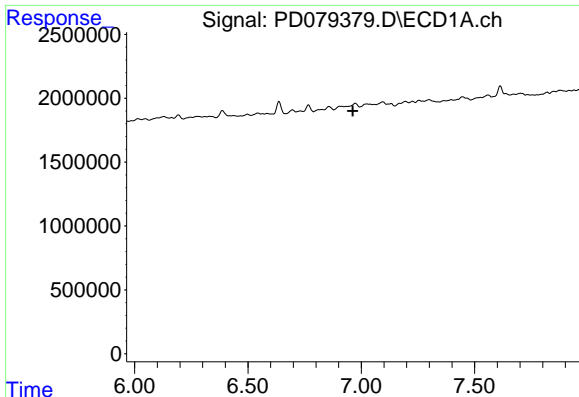
#17 4,4'-DDT

R.T.: 0.000 min  
 Exp R.T. : 7.061 min  
 Response: 0  
 Conc: N.D.



#17 4,4'-DDT

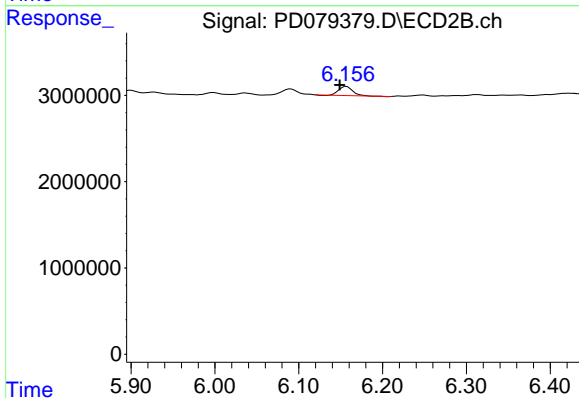
R.T.: 6.090 min  
 Delta R.T.: 0.014 min  
 Response: 629250  
 Conc: 0.28 ng/ml



#18 Endrin aldehyde

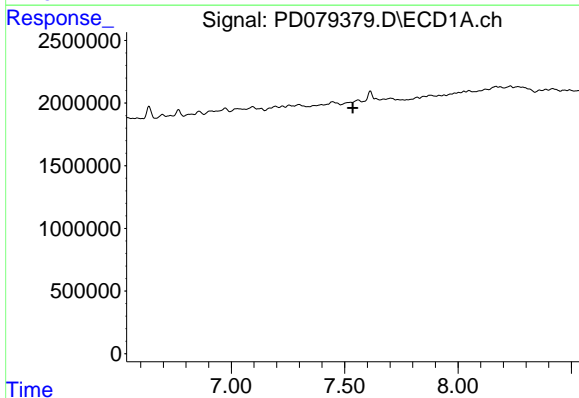
R.T.: 0.000 min  
 Exp R.T.: 6.963 min  
 Response: 0  
 Conc: N.D.

Instrument :  
 ECD\_D  
 ClientSampleId :



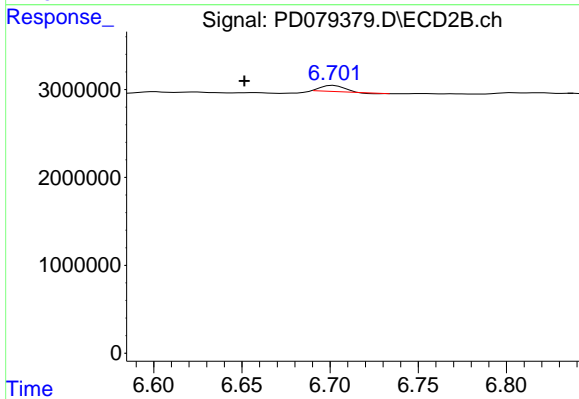
#18 Endrin aldehyde

R.T.: 6.157 min  
 Delta R.T.: 0.008 min  
 Response: 1183378  
 Conc: 0.64 ng/ml



#20 Methoxychlor

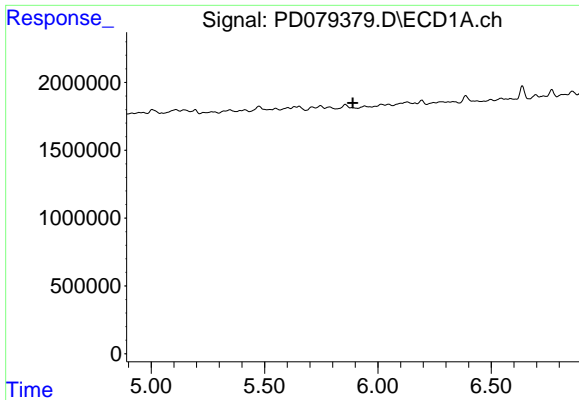
R.T.: 0.000 min  
 Exp R.T.: 7.535 min  
 Response: 0  
 Conc: N.D.



#20 Methoxychlor

R.T.: 6.702 min  
 Delta R.T.: 0.051 min  
 Response: 536964  
 Conc: 0.44 ng/ml

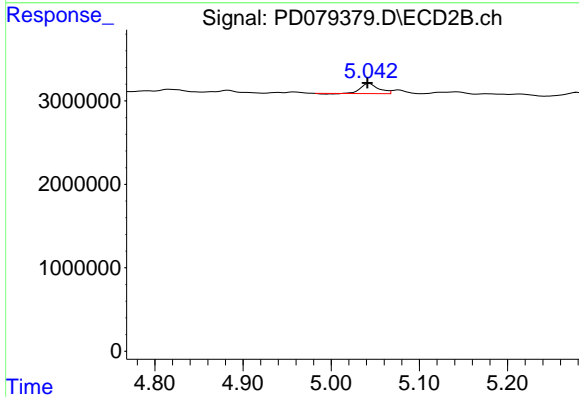




#22 Toxaphene-1

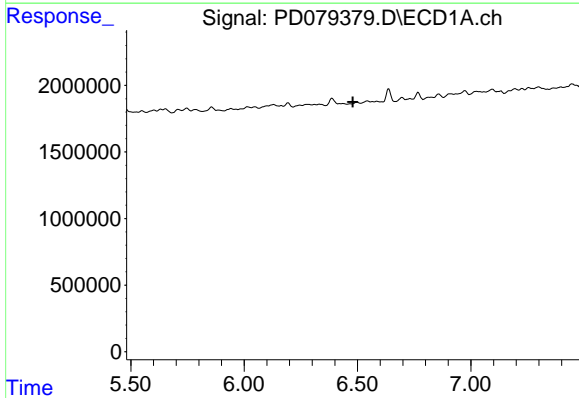
R.T.: 0.000 min  
 Exp R.T. : 5.890 min  
 Response: 0  
 Conc: N.D.

Instrument :  
 ECD\_D  
 ClientSampleId :



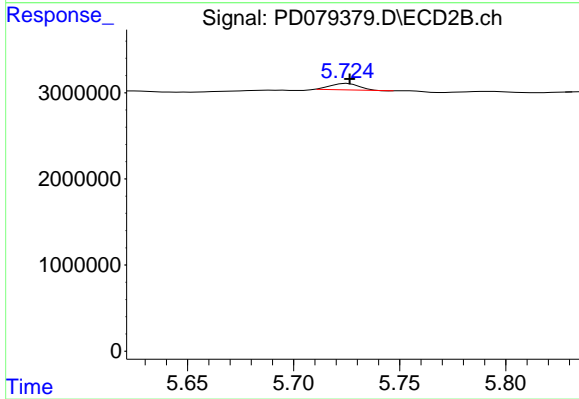
#22 Toxaphene-1

R.T.: 5.043 min  
 Delta R.T.: 0.002 min  
 Response: 1703074  
 Conc: 110.29 ng/ml



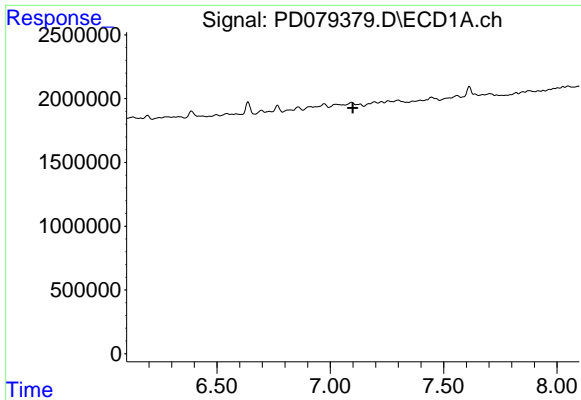
#23 Toxaphene-2

R.T.: 0.000 min  
 Exp R.T. : 6.480 min  
 Response: 0  
 Conc: N.D.



#23 Toxaphene-2

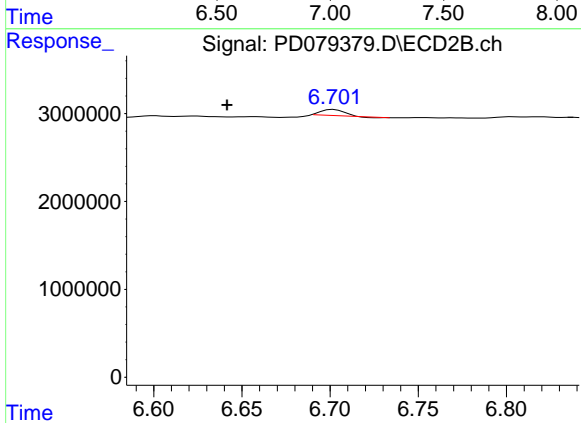
R.T.: 5.725 min  
 Delta R.T.: -0.001 min  
 Response: 710498  
 Conc: 43.25 ng/ml



#24 Toxaphene-3

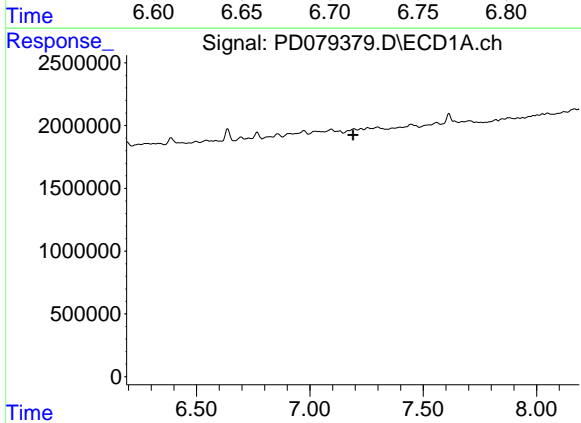
R.T.: 0.000 min  
 Exp R.T.: 7.099 min  
 Response: 0  
 Conc: N.D.

Instrument :  
 ECD\_D  
 ClientSampleId :



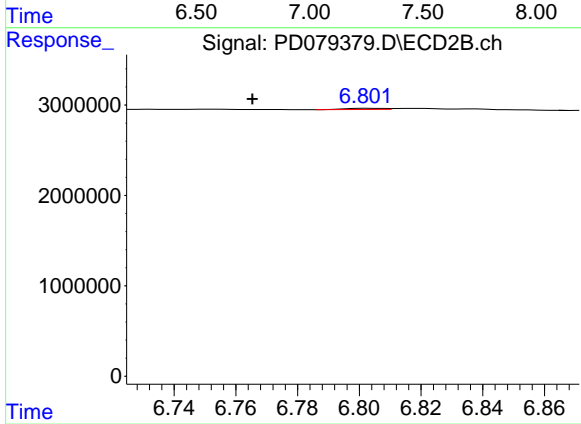
#24 Toxaphene-3

R.T.: 6.702 min  
 Delta R.T.: 0.060 min  
 Response: 536964  
 Conc: 10.26 ng/ml



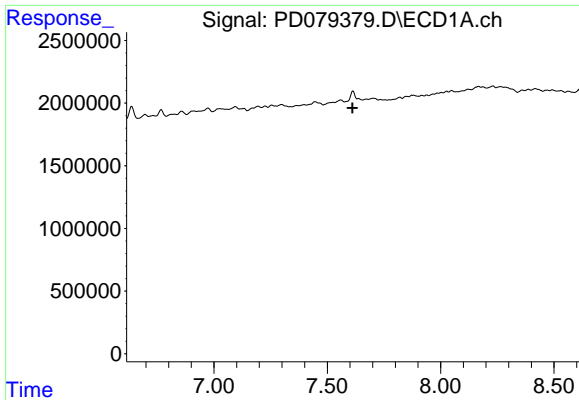
#25 Toxaphene-4

R.T.: 0.000 min  
 Exp R.T.: 7.191 min  
 Response: 0  
 Conc: N.D.



#25 Toxaphene-4

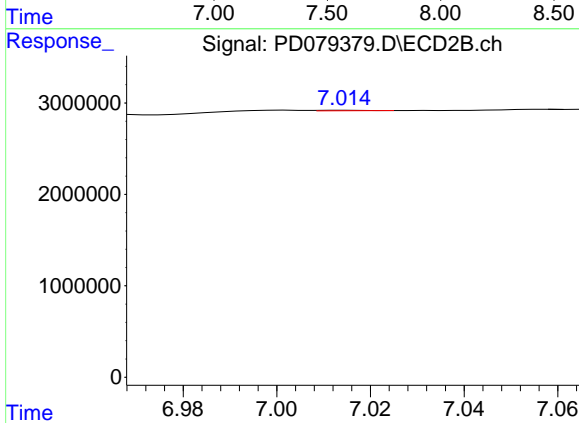
R.T.: 6.803 min  
 Delta R.T.: 0.037 min  
 Response: 120860  
 Conc: 1.68 ng/ml



#26 Toxaphene-5

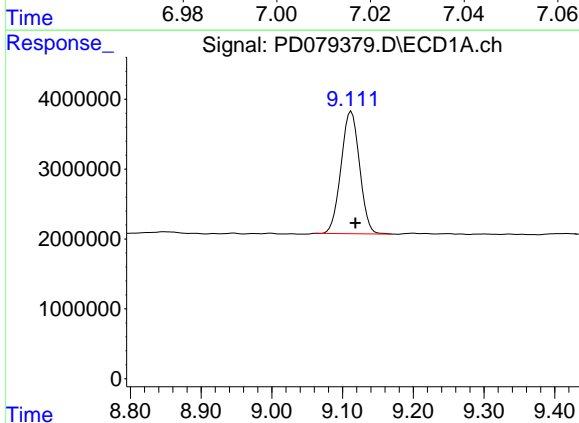
R.T.: 0.000 min  
 Exp R.T.: 7.611 min  
 Response: 0  
 Conc: N.D.

Instrument :  
 ECD\_D  
 ClientSampleId :



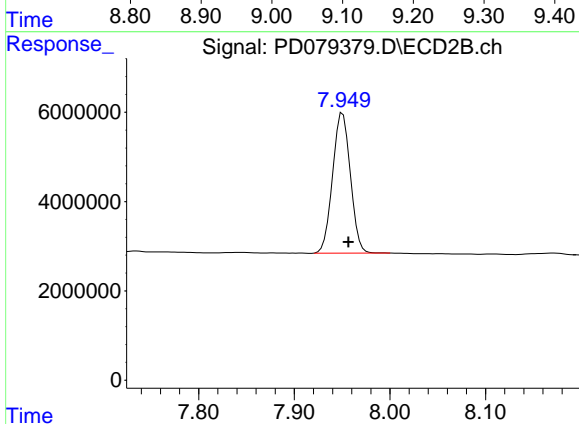
#26 Toxaphene-5

R.T.: 7.015 min  
 Delta R.T.: -0.067 min  
 Response: 37499  
 Conc: 1.21 ng/ml



#27 Decachlorobiphenyl

R.T.: 9.112 min  
 Delta R.T.: -0.006 min  
 Response: 31860510  
 Conc: 16.80 ng/ml



#27 Decachlorobiphenyl

R.T.: 7.951 min  
 Delta R.T.: -0.006 min  
 Response: 40582716  
 Conc: 17.40 ng/ml