

Data Path : Z:\pestpcbsrv\HPCHEM1\ECD_D\Data\PD110323\
 Data File : PD079371.D
 Signal(s) : Signal #1: ECD1A.ch Signal #2: ECD2B.ch
 Acq On : 01 Nov 2023 21:24
 Operator : AR\AJ
 Sample : 05013-20
 Misc :
 ALS Vial : 34 Sample Multiplier: 1

Instrument :
 ECD_D
 ClientSampleId :
 A49B3

Integration File signal 1: autoint1.e
 Integration File signal 2: autoint2.e
 Quant Time: Nov 02 01:15:28 2023
 Quant Method : Z:\pestpcbsrv\HPCHEM1\ECD_D\Method\PD101723CLP.M
 Quant Title : GC Extractables
 QLast Update : Tue Oct 17 09:38:01 2023
 Response via : Initial Calibration
 Integrator: ChemStation

Volume Inj. : 1 µl
 Signal #1 Phase : ZB-MR1 Signal #2 Phase: ZB-MR2
 Signal #1 Info : 30M x 0.32mm x0.5 Signal #2 Info : 30M x 0.32mm x 0.25µm

| Compound | RT#1 | RT#2 | Resp#1 | Resp#2 | ng/ml | ng/ml |
|-----------------------------|-------|-------|----------|----------|--------|--------|
| ----- | | | | | | |
| System Monitoring Compounds | | | | | | |
| 1) SA Tetrachlo... | 3.567 | 2.803 | 26653330 | 39199963 | 17.379 | 18.077 |
| 27) SA Decachlor... | 9.113 | 7.951 | 29189769 | 36765900 | 15.390 | 15.764 |

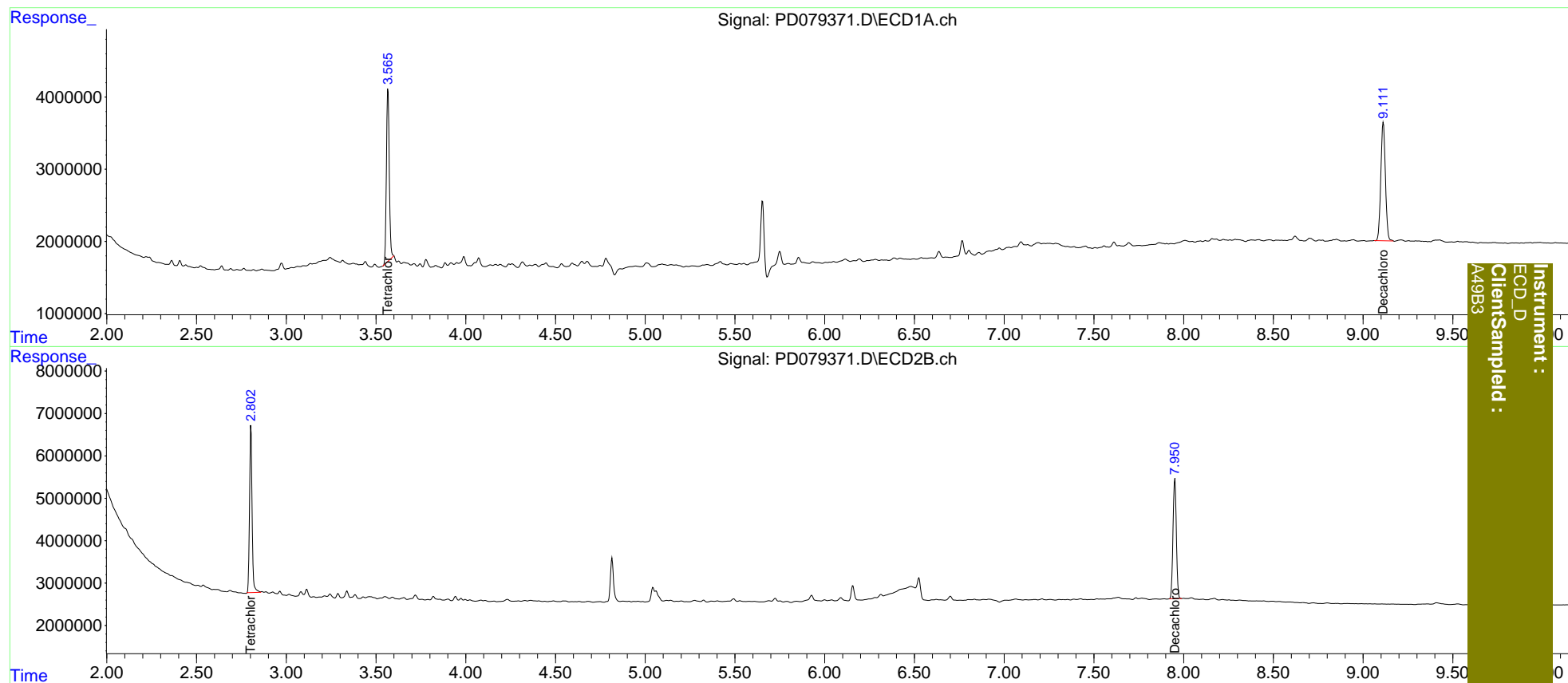
Target Compounds

(f)=RT Delta > 1/2 Window (#)=Amounts differ by > 25% (m)=manual int.

Data Path : Z:\pestpcbsrv\HPCHEM1\ECD_D\Data\PD110323\
 Data File : PD079371.D
 Signal(s) : Signal #1: ECD1A.ch Signal #2: ECD2B.ch
 Acq On : 01 Nov 2023 21:24
 Operator : AR\AJ
 Sample : 05013-20
 Misc :
 ALS Vial : 34 Sample Multiplier: 1

Integration File signal 1: autoint1.e
 Integration File signal 2: autoint2.e
 Quant Time: Nov 02 01:15:28 2023
 Quant Method : Z:\pestpcbsrv\HPCHEM1\ECD_D\Method\PD101723CLP.M
 Quant Title : GC Extractables
 QLast Update : Tue Oct 17 09:38:01 2023
 Response via : Initial Calibration
 Integrator: ChemStation

Volume Inj. : 1 µl
 Signal #1 Phase : ZB-MR1 Signal #2 Phase: ZB-MR2
 Signal #1 Info : 30M x 0.32mm x0.5 Signal #2 Info : 30M x 0.32mm x 0.25µm



Instrument :
 ECD_D
 ClientSampled :
 A49B3