

Data Path : Z:\pestpcbsrv\HPCHEM1\ECD_D\Data\PD110323\
 Data File : PD079381.D
 Signal(s) : Signal #1: ECD1A.ch Signal #2: ECD2B.ch
 Acq On : 01 Nov 2023 23:37
 Operator : AR\AJ
 Sample : INDA318
 Misc :
 ALS Vial : 16 Sample Multiplier: 1

Instrument :
 ECD_D
 ClientSampleId :
 INDA3174

Integration File signal 1: autoint1.e
 Integration File signal 2: autoint2.e
 Quant Time: Nov 02 01:17:29 2023
 Quant Method : Z:\pestpcbsrv\HPCHEM1\ECD_D\Method\PD101723CLP.M
 Quant Title : GC Extractables
 QLast Update : Tue Oct 17 09:38:01 2023
 Response via : Initial Calibration
 Integrator: ChemStation

Volume Inj. : 1 µl
 Signal #1 Phase : ZB-MR1 Signal #2 Phase: ZB-MR2
 Signal #1 Info : 30M x 0.32mm x0.5 Signal #2 Info : 30M x 0.32mm x 0.25µm

Compound	RT#1	RT#2	Resp#1	Resp#2	ng/ml	ng/ml

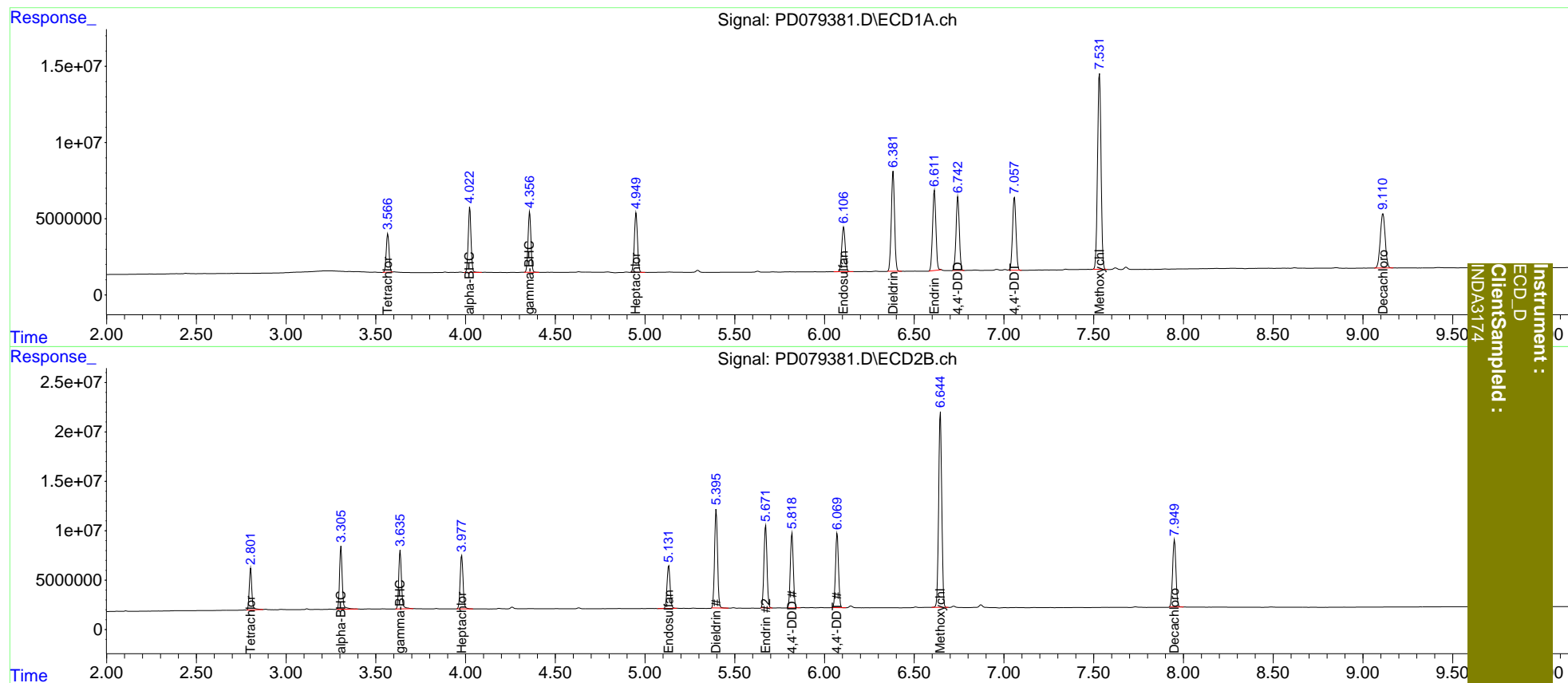
System Monitoring Compounds						
1) SA Tetrachlo...	3.567	2.803	27544577	41959580	17.960	19.349
27) SA Decachlor...	9.112	7.950	67658566	87208535	35.672	37.392
Target Compounds						
2) A alpha-BHC	4.024	3.306	46511345	66182819	17.851	19.409
3) MA gamma-BHC...	4.357	3.636	44339045	62984617	17.815	19.487
4) MA Heptachlor	4.950	3.979	47090346	61504138	17.676	20.226
9) A Endosulfan I	6.107	5.132	39056917	51614835	18.232	20.325
13) MA Dieldrin	6.383	5.397	82711005	115.0E6	36.408	39.054
14) MA Endrin	6.613	5.672	68138967	98644807	35.991	39.092
16) A 4,4'-DDD	6.743	5.819	61171398	86983589	36.393	39.381
17) MA 4,4'-DDT	7.058	6.071	63879054	87896430	35.676	39.014
20) A Methoxychlor	7.532	6.646	173.9E6	238.7E6	181.240	195.742

(f)=RT Delta > 1/2 Window (#)=Amounts differ by > 25% (m)=manual int.

Data Path : Z:\pestpcbsrv\HPCHEM1\ECD_D\Data\PD110323\
 Data File : PD079381.D
 Signal(s) : Signal #1: ECD1A.ch Signal #2: ECD2B.ch
 Acq On : 01 Nov 2023 23:37
 Operator : AR\AJ
 Sample : INDA318
 Misc :
 ALS Vial : 16 Sample Multiplier: 1

Integration File signal 1: autoint1.e
 Integration File signal 2: autoint2.e
 Quant Time: Nov 02 01:17:29 2023
 Quant Method : Z:\pestpcbsrv\HPCHEM1\ECD_D\Method\PD101723CLP.M
 Quant Title : GC Extractables
 QLast Update : Tue Oct 17 09:38:01 2023
 Response via : Initial Calibration
 Integrator: ChemStation

Volume Inj. : 1 µl
 Signal #1 Phase : ZB-MR1 Signal #2 Phase: ZB-MR2
 Signal #1 Info : 30M x 0.32mm x0.5 Signal #2 Info : 30M x 0.32mm x 0.25µm



Instrument :
 ECD_D
 ClientSampled :
 INDA3174