

Data Path : Z:\pestpcbsrv\HPCHEM1\ECD\_D\Data\PD110421\  
 Data File : PD066723.D  
 Signal(s) : Signal #1: ECD1A.ch Signal #2: ECD2B.ch  
 Acq On : 04 Nov 2021 11:56  
 Operator : AR\AJ  
 Sample : PEM033  
 Misc :  
 ALS Vial : 3 Sample Multiplier: 1

Integration File signal 1: autoint1.e  
 Integration File signal 2: autoint2.e  
 Quant Time: Nov 08 04:55:39 2021  
 Quant Method : Z:\pestpcbsrv\HPCHEM1\ECD\_D\Method\PD102721CLP.M  
 Quant Title : GC Extractables  
 QLast Update : Wed Oct 27 16:50:52 2021  
 Response via : Initial Calibration  
 Integrator: ChemStation

Volume Inj. : 1 µl  
 Signal #1 Phase : ZB-MR2 Signal #2 Phase: ZB-MR1  
 Signal #1 Info : 30M x 0.32mm x0.2 Signal #2 Info : 30M x 0.32mm x 0.50µm

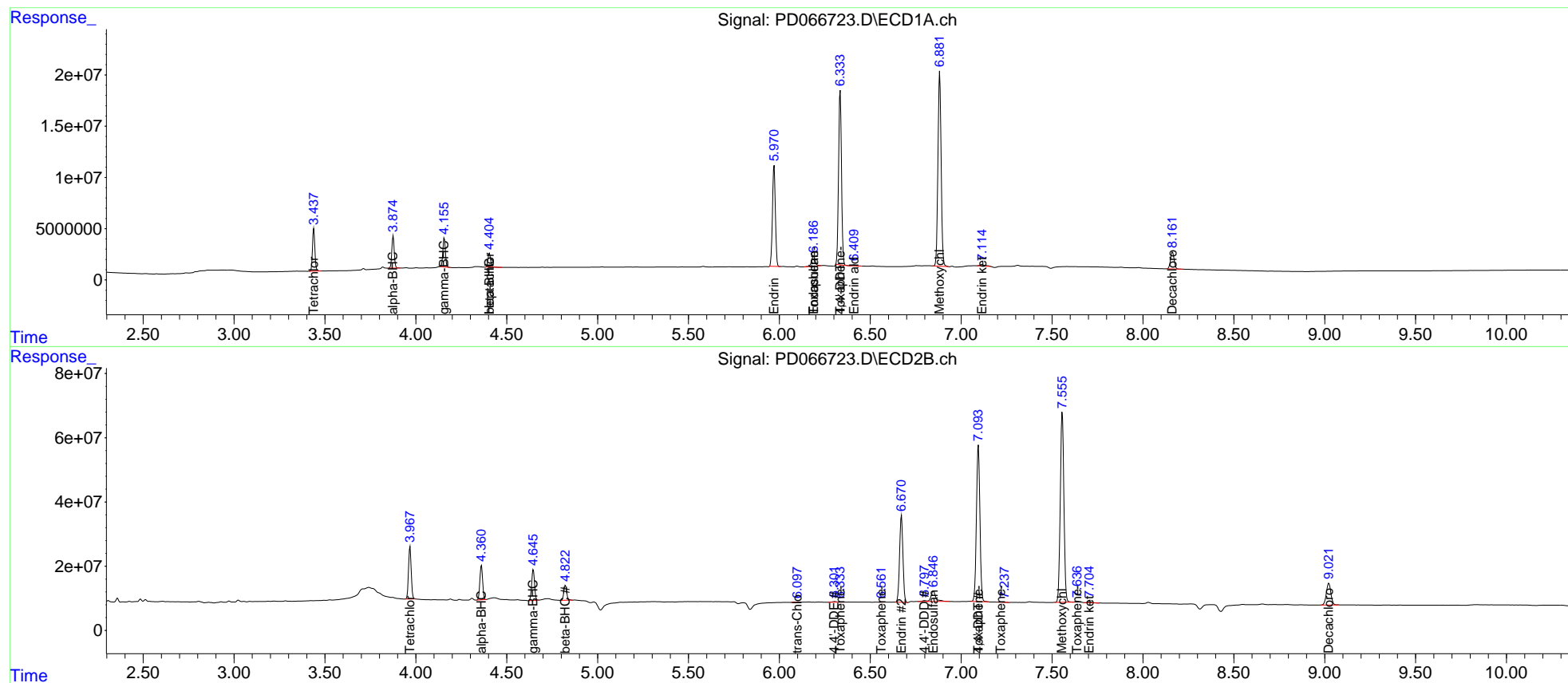
Compound	RT#1	RT#2	Resp#1	Resp#2	ng/ml	ng/ml
-----						
System Monitoring Compounds						
1) SA Tetrachlo...	3.439	3.968	37866303	169.4E6	19.589	19.558
27) SA Decachlor...	8.163	9.023	22865837	117.1E6	19.515	22.460
Target Compounds						
2) A alpha-BHC	3.875	4.361	28752167	113.3E6	9.823	10.364
3) MA gamma-BHC...	4.157	4.646	26864589	104.2E6	9.703	10.314
4) MA Heptachlor	4.405f	5.128	13597946	779425	4.780	<MDL #
6) B beta-BHC	4.405	4.823	13597946	51575254	10.826	10.467
8) B Heptachlo...	0.000	5.803f	0	611215	N.D.	<MDL
9) A Endosulfan I	0.000	6.188	0	227854	N.D.	<MDL
10) B trans-Chl...	0.000	6.099	0	1330834	N.D.	0.155
11) B cis-Chlor...	0.000	6.133	0	485277	N.D.	<MDL
12) B 4,4'-DDE	0.000	6.303	0	3136743	N.D.	0.412
13) MA Dieldrin	0.000	6.480	0	18721	N.D.	<MDL
14) MA Endrin	5.971	6.672	110.1E6	346.0E6	52.024	50.986
15) B Endosulfa...	6.188f	6.847f	13790231	58170739	6.641	8.112
16) A 4,4'-DDD	0.000	6.799	0	3873569	N.D.	0.600
17) MA 4,4'-DDT	6.335	7.095	190.9E6	650.9E6	100.955	98.535
18) B Endrin al...	6.411	7.010	1203569	194718	0.826	<MDL #
19) B Endosulfa...	0.000	7.219	0	530724	N.D.	<MDL
20) A Methoxychlor	6.882	7.556	231.0E6	819.3E6	246.494	253.502
21) B Endrin ke...	7.115	7.706	2765112	5171261	1.342	0.660 #
22) Toxaphene-1	0.000	6.335	0	273725	N.D.	6.772
23) Toxaphene-2	6.188	6.563	13790231	25458	857.708	0.385 #
24) Toxaphene-3	6.335	7.095	190.9E6	650.9E6	5131.607	5720.448
25) Toxaphene-4	0.000	7.219	0	530724	N.D.	4.695
26) Toxaphene-5	0.000	7.638	0	3245384	N.D.	38.111
-----						

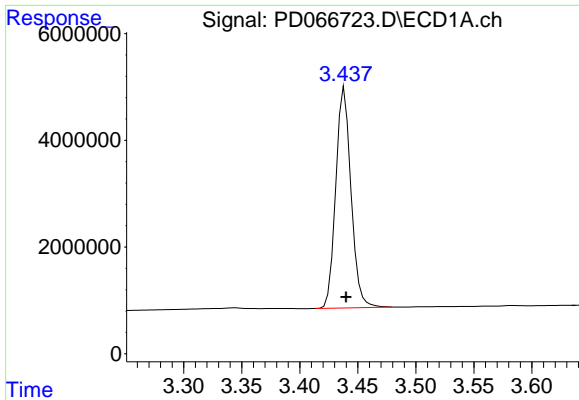
(f)=RT Delta > 1/2 Window (#)=Amounts differ by > 25% (m)=manual int.

Data Path : Z:\pestpcbsrv\HPCHEM1\ECD\_D\Data\PD110421\  
 Data File : PD066723.D  
 Signal(s) : Signal #1: ECD1A.ch Signal #2: ECD2B.ch  
 Acq On : 04 Nov 2021 11:56  
 Operator : AR\AJ  
 Sample : PEM033  
 Misc :  
 ALS Vial : 3 Sample Multiplier: 1

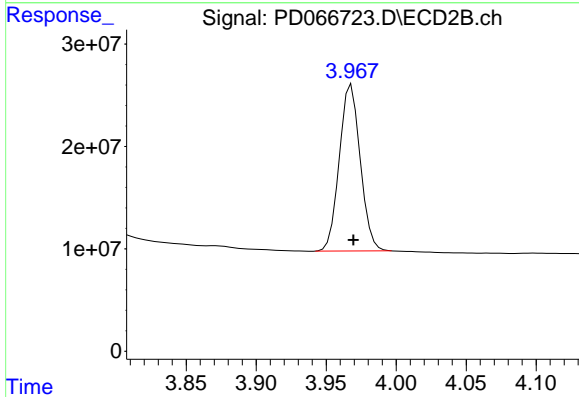
Integration File signal 1: autoint1.e  
 Integration File signal 2: autoint2.e  
 Quant Time: Nov 08 04:55:39 2021  
 Quant Method : Z:\pestpcbsrv\HPCHEM1\ECD\_D\Method\PD102721CLP.M  
 Quant Title : GC Extractables  
 QLast Update : Wed Oct 27 16:50:52 2021  
 Response via : Initial Calibration  
 Integrator: ChemStation

Volume Inj. : 1 µl  
 Signal #1 Phase : ZB-MR2 Signal #2 Phase: ZB-MR1  
 Signal #1 Info : 30M x 0.32mm x0.2 Signal #2 Info : 30M x 0.32mm x 0.50µm

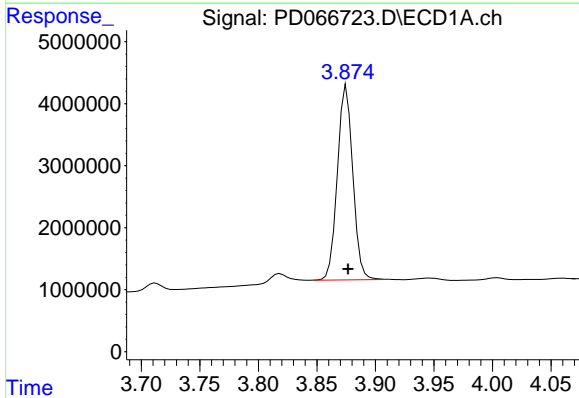




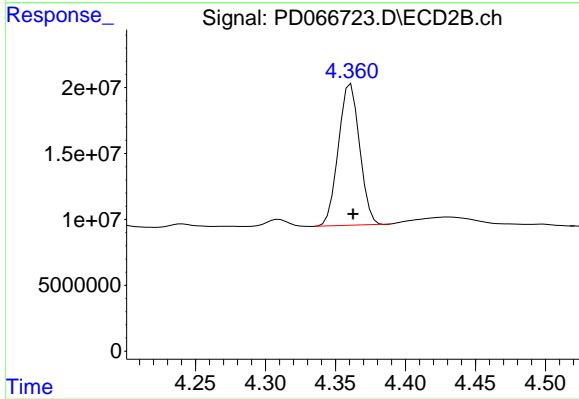
#1 Tetrachloro-m-xylene  
R.T.: 3.439 min  
Delta R.T.: -0.001 min  
Response: 37866303  
Conc: 19.59 ng/ml



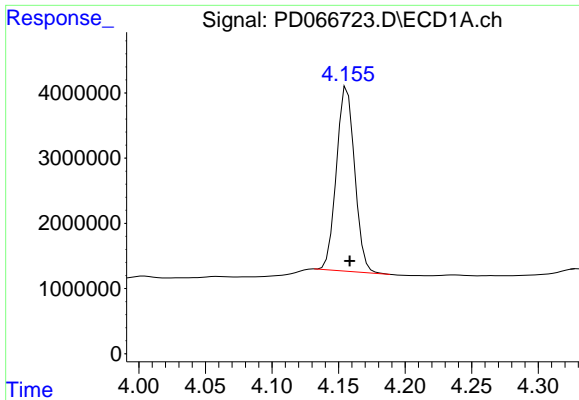
#1 Tetrachloro-m-xylene  
R.T.: 3.968 min  
Delta R.T.: -0.001 min  
Response: 169382811  
Conc: 19.56 ng/ml



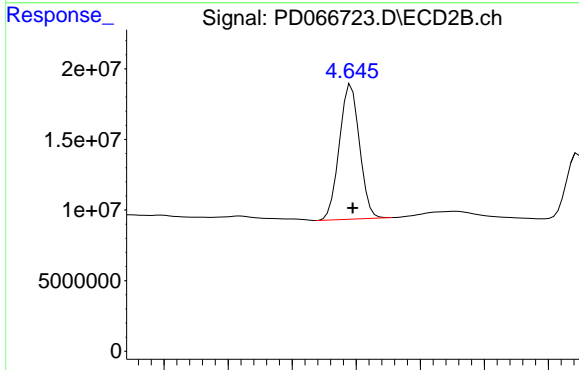
#2 alpha-BHC  
R.T.: 3.875 min  
Delta R.T.: -0.001 min  
Response: 28752167  
Conc: 9.82 ng/ml



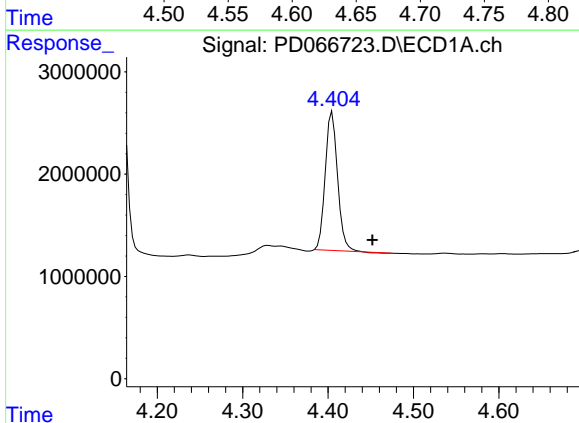
#2 alpha-BHC  
R.T.: 4.361 min  
Delta R.T.: -0.001 min  
Response: 113323769  
Conc: 10.36 ng/ml



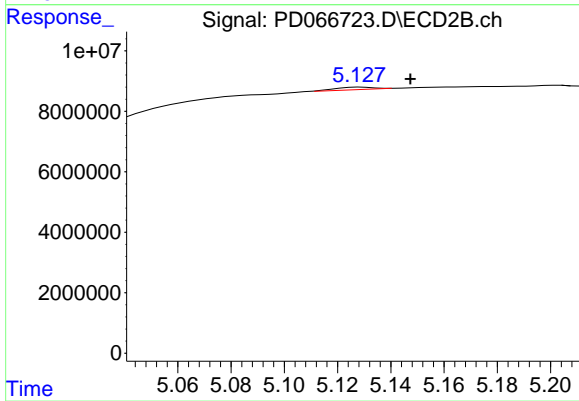
#3 gamma-BHC (Lindane)  
R.T.: 4.157 min  
Delta R.T.: -0.002 min  
Response: 26864589  
Conc: 9.70 ng/ml



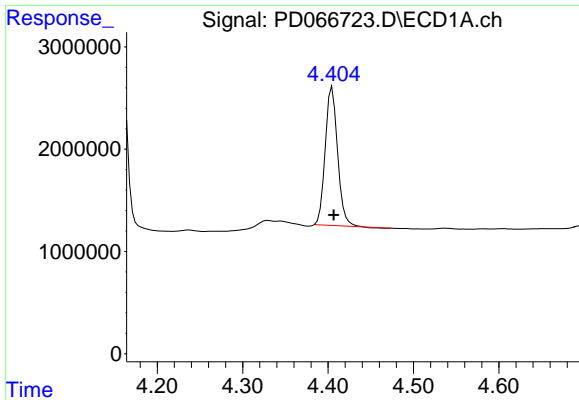
#3 gamma-BHC (Lindane)  
R.T.: 4.646 min  
Delta R.T.: -0.001 min  
Response: 104225974  
Conc: 10.31 ng/ml



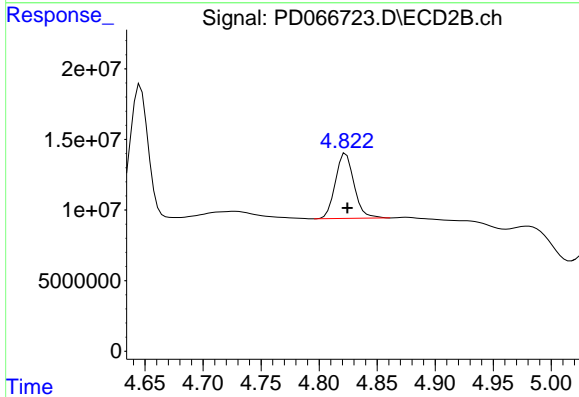
#4 Heptachlor  
R.T.: 4.405 min  
Delta R.T.: -0.047 min  
Response: 13597946  
Conc: 4.78 ng/ml



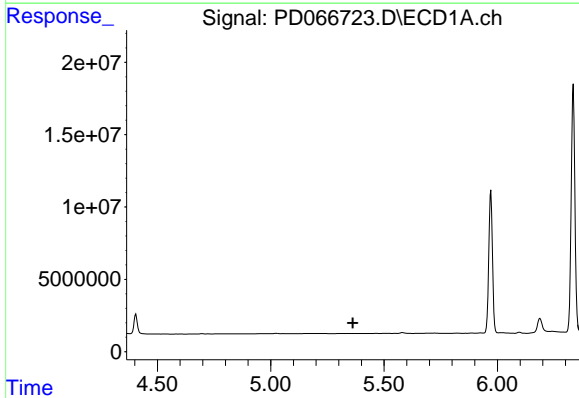
#4 Heptachlor  
R.T.: 5.128 min  
Delta R.T.: -0.019 min  
Response: 779425  
Conc: N.D.



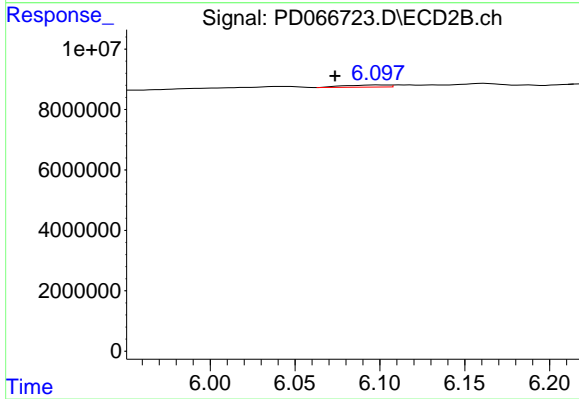
#6 beta-BHC  
R.T.: 4.405 min  
Delta R.T.: -0.002 min  
Response: 13597946  
Conc: 10.83 ng/ml



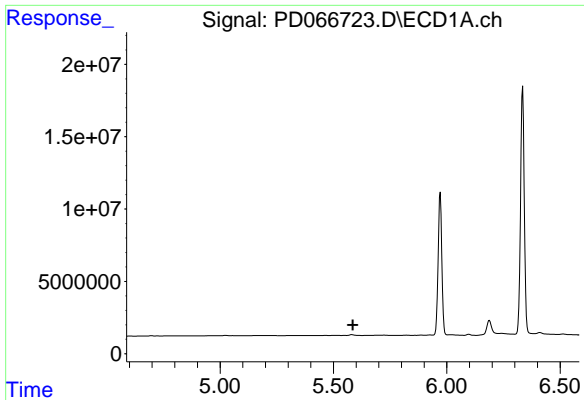
#6 beta-BHC  
R.T.: 4.823 min  
Delta R.T.: -0.001 min  
Response: 51575254  
Conc: 10.47 ng/ml



#10 trans-Chlordane  
R.T.: 0.000 min  
Exp R.T. : 5.363 min  
Response: 0  
Conc: N.D.

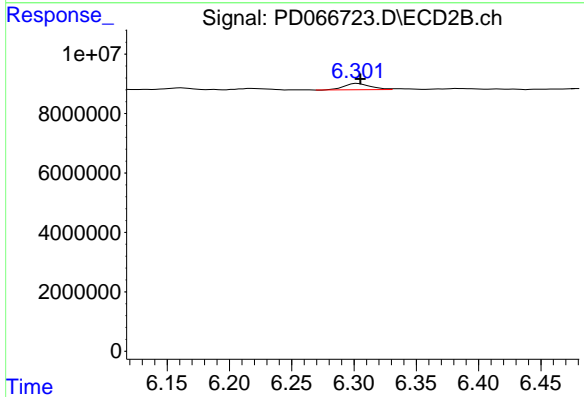


#10 trans-Chlordane  
R.T.: 6.099 min  
Delta R.T.: 0.026 min  
Response: 1330834  
Conc: 0.15 ng/ml



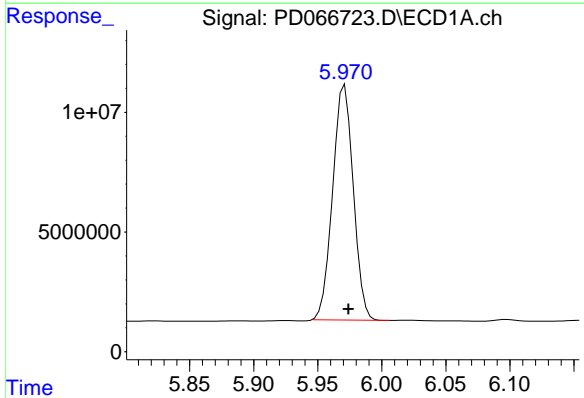
#12 4,4'-DDE

R.T.: 0.000 min  
 Exp R.T.: 5.585 min  
 Response: 0  
 Conc: N.D.



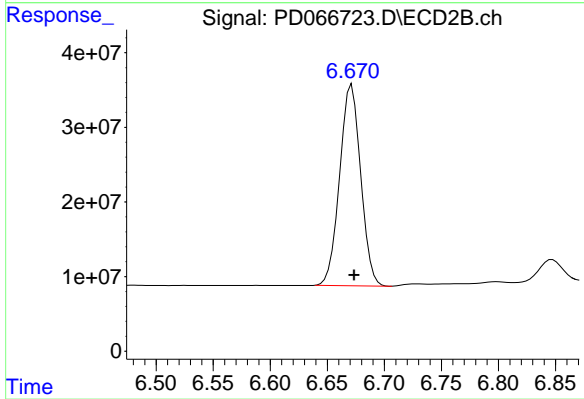
#12 4,4'-DDE

R.T.: 6.303 min  
 Delta R.T.: -0.002 min  
 Response: 3136743  
 Conc: 0.41 ng/ml



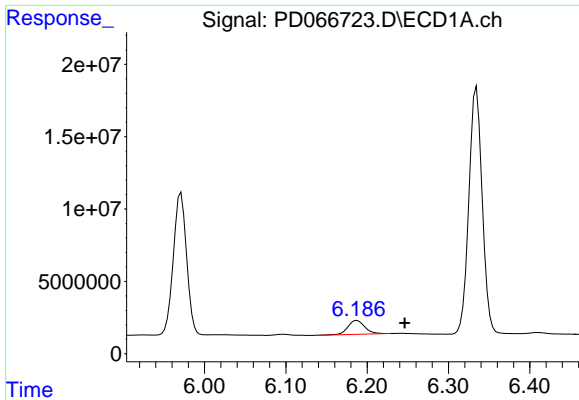
#14 Endrin

R.T.: 5.971 min  
 Delta R.T.: -0.003 min  
 Response: 110068910  
 Conc: 52.02 ng/ml



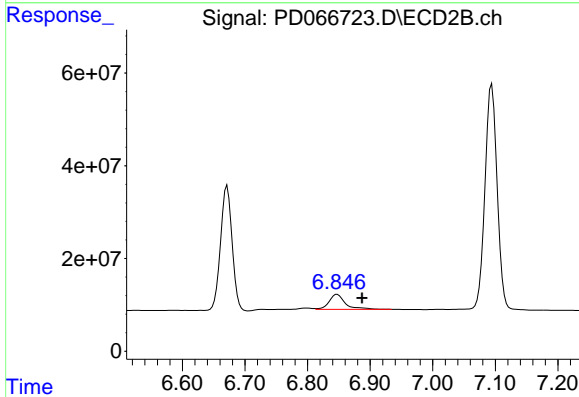
#14 Endrin

R.T.: 6.672 min  
 Delta R.T.: -0.002 min  
 Response: 346009089  
 Conc: 50.99 ng/ml



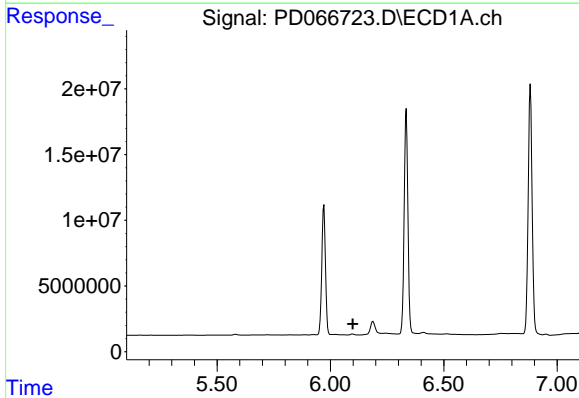
#15 Endosulfan II

R.T.: 6.188 min  
 Delta R.T.: -0.059 min  
 Response: 13790231  
 Conc: 6.64 ng/ml



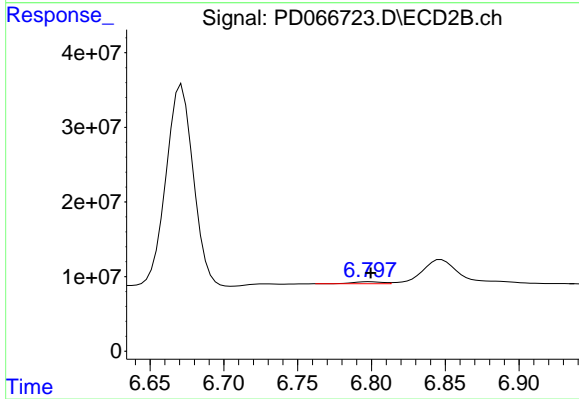
#15 Endosulfan II

R.T.: 6.847 min  
 Delta R.T.: -0.040 min  
 Response: 58170739  
 Conc: 8.11 ng/ml



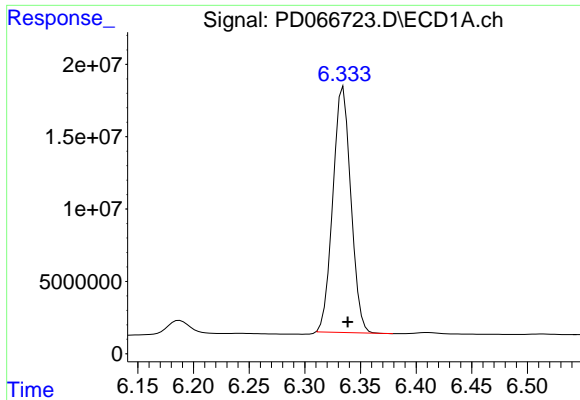
#16 4,4'-DDD

R.T.: 0.000 min  
 Exp R.T. : 6.099 min  
 Response: 0  
 Conc: N.D.



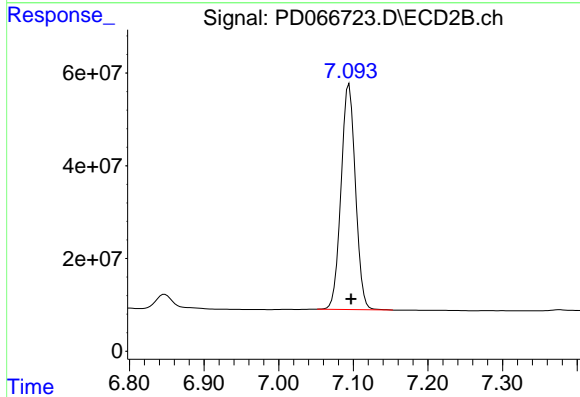
#16 4,4'-DDD

R.T.: 6.799 min  
 Delta R.T.: 0.000 min  
 Response: 3873569  
 Conc: 0.60 ng/ml



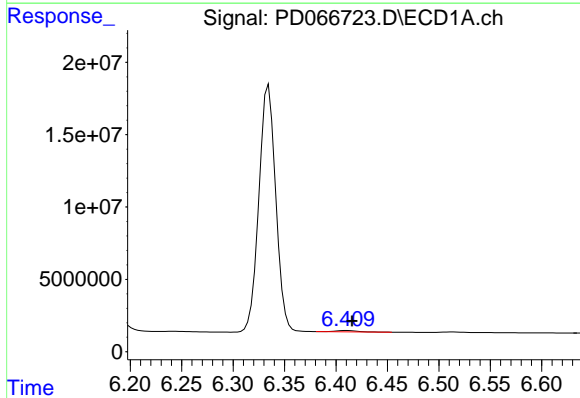
#17 4,4'-DDT

R.T.: 6.335 min  
Delta R.T.: -0.004 min  
Response: 190881448  
Conc: 100.96 ng/ml



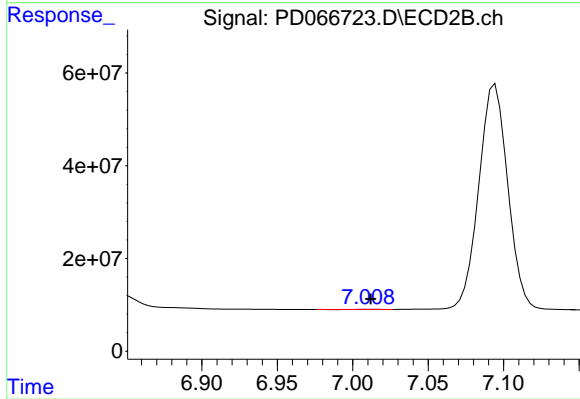
#17 4,4'-DDT

R.T.: 7.095 min  
Delta R.T.: -0.002 min  
Response: 650932647  
Conc: 98.53 ng/ml



#18 Endrin aldehyde

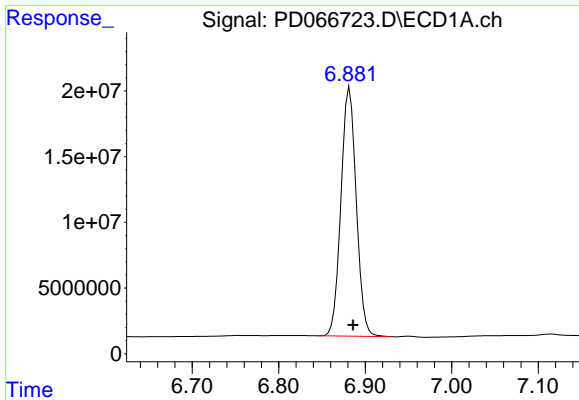
R.T.: 6.411 min  
Delta R.T.: -0.005 min  
Response: 1203569  
Conc: 0.83 ng/ml



#18 Endrin aldehyde

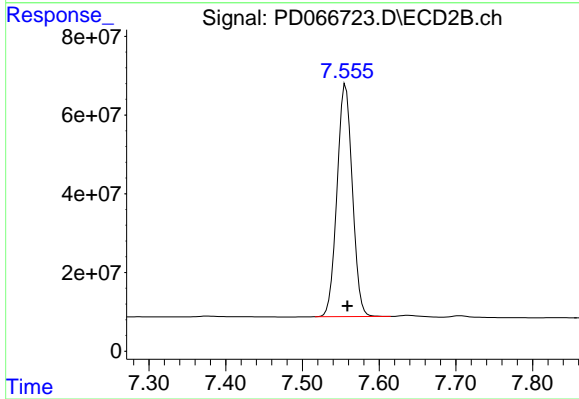
R.T.: 7.010 min  
Delta R.T.: -0.002 min  
Response: 194718  
Conc: N.D.





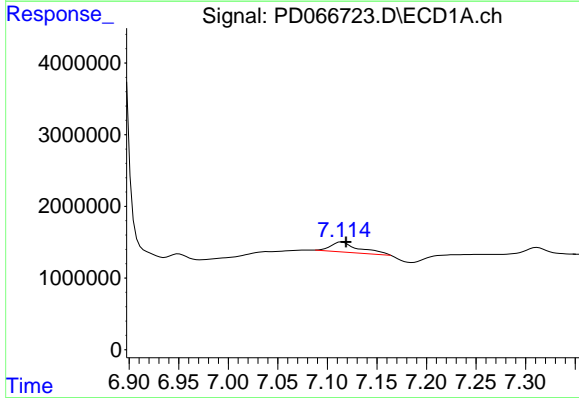
#20 Methoxychlor

R.T.: 6.882 min  
Delta R.T.: -0.004 min  
Response: 231016370  
Conc: 246.49 ng/ml



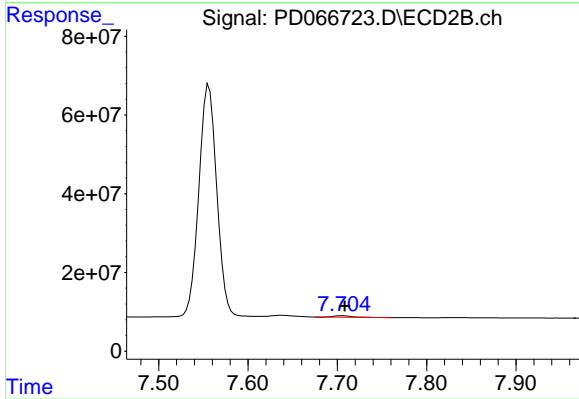
#20 Methoxychlor

R.T.: 7.556 min  
Delta R.T.: -0.002 min  
Response: 819258369  
Conc: 253.50 ng/ml



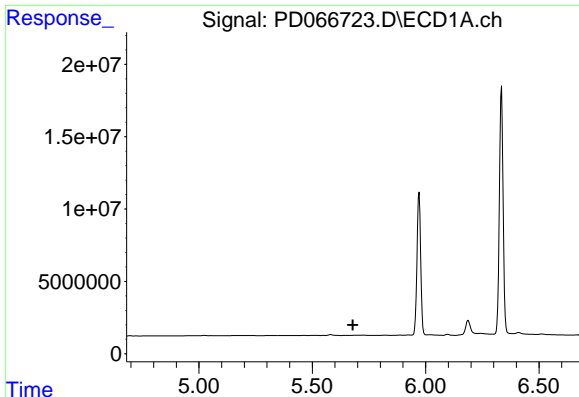
#21 Endrin ketone

R.T.: 7.115 min  
Delta R.T.: -0.004 min  
Response: 2765112  
Conc: 1.34 ng/ml



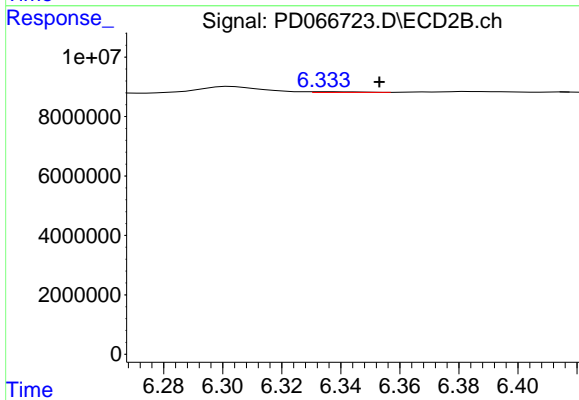
#21 Endrin ketone

R.T.: 7.706 min  
Delta R.T.: -0.003 min  
Response: 5171261  
Conc: 0.66 ng/ml



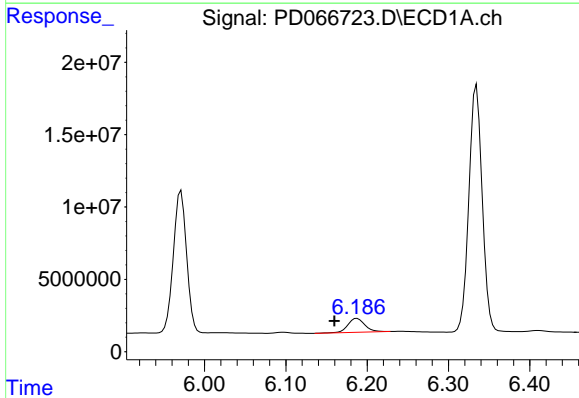
#22 Toxaphene-1

R.T.: 0.000 min  
 Exp R.T. : 5.679 min  
 Response: 0  
 Conc: N.D.



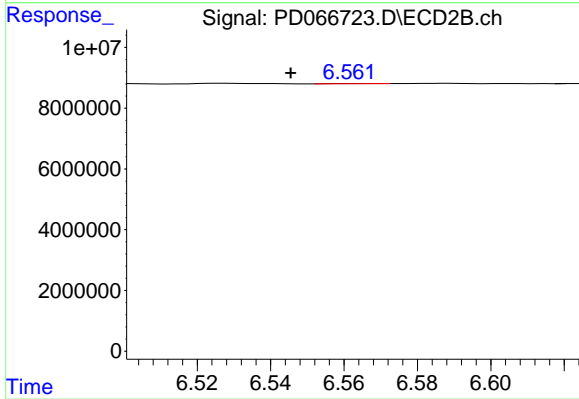
#22 Toxaphene-1

R.T.: 6.335 min  
 Delta R.T.: -0.018 min  
 Response: 273725  
 Conc: 6.77 ng/ml



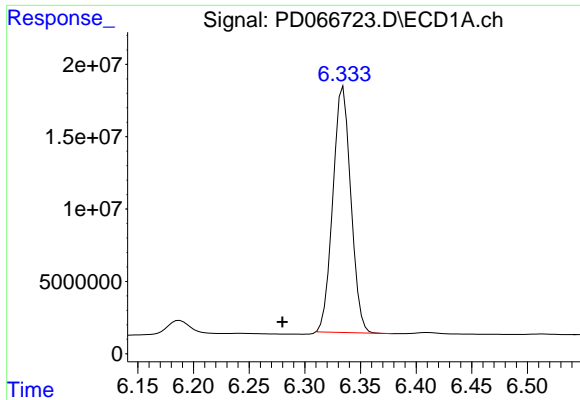
#23 Toxaphene-2

R.T.: 6.188 min  
 Delta R.T.: 0.028 min  
 Response: 13790231  
 Conc: 857.71 ng/ml



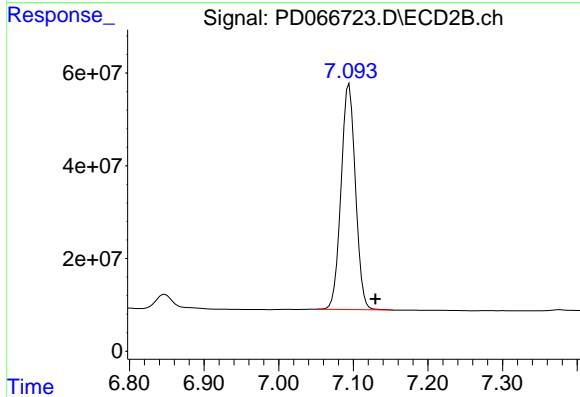
#23 Toxaphene-2

R.T.: 6.563 min  
 Delta R.T.: 0.017 min  
 Response: 25458  
 Conc: 0.39 ng/ml



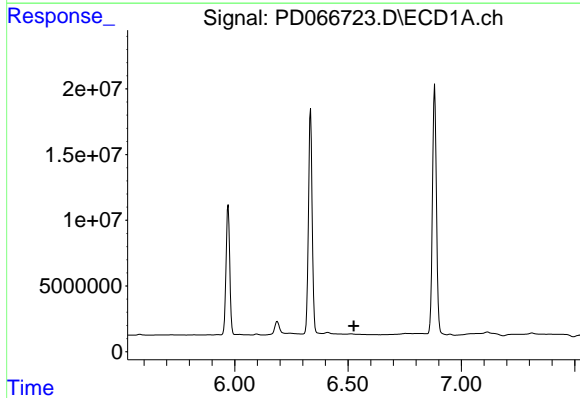
#24 Toxaphene-3

R.T.: 6.335 min  
 Delta R.T.: 0.055 min  
 Response: 190881448  
 Conc: 5131.61 ng/ml



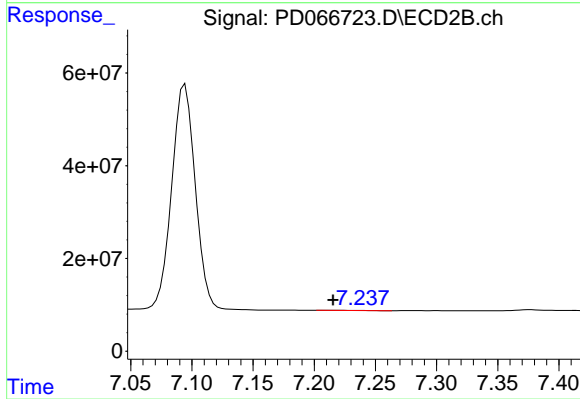
#24 Toxaphene-3

R.T.: 7.095 min  
 Delta R.T.: -0.035 min  
 Response: 650932647  
 Conc: 5720.45 ng/ml



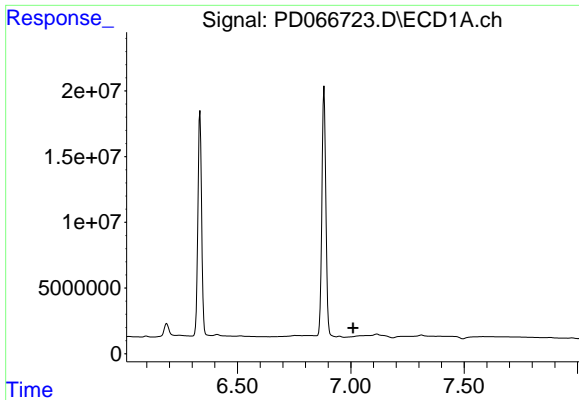
#25 Toxaphene-4

R.T.: 0.000 min  
 Exp R.T. : 6.525 min  
 Response: 0  
 Conc: N.D.



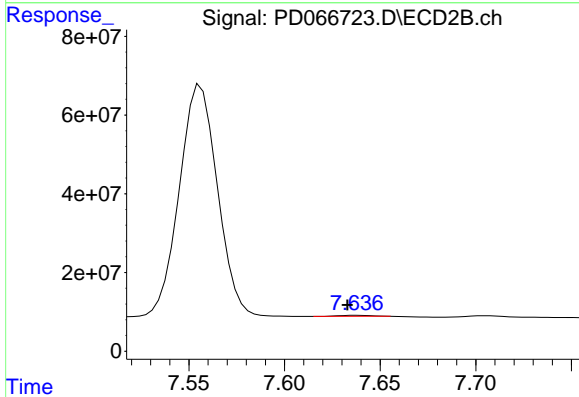
#25 Toxaphene-4

R.T.: 7.219 min  
 Delta R.T.: 0.004 min  
 Response: 530724  
 Conc: 4.70 ng/ml



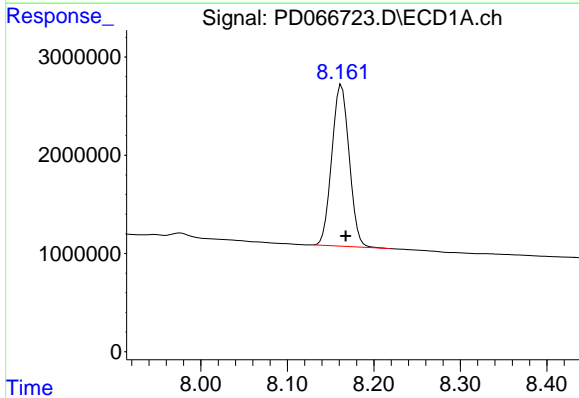
#26 Toxaphene-5

R.T.: 0.000 min  
 Exp R.T. : 7.010 min  
 Response: 0  
 Conc: N.D.



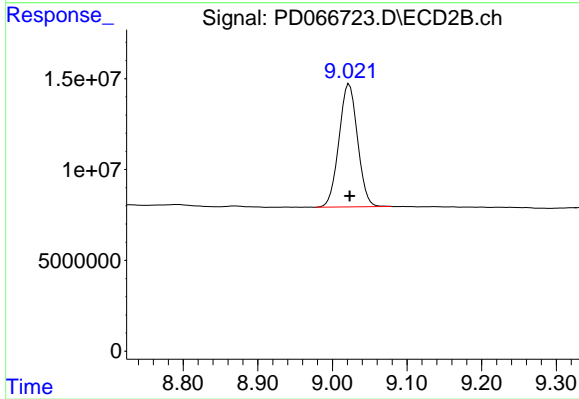
#26 Toxaphene-5

R.T.: 7.638 min  
 Delta R.T.: 0.005 min  
 Response: 3245384  
 Conc: 38.11 ng/ml



#27 Decachlorobiphenyl

R.T.: 8.163 min  
 Delta R.T.: -0.005 min  
 Response: 22865837  
 Conc: 19.52 ng/ml



#27 Decachlorobiphenyl

R.T.: 9.023 min  
 Delta R.T.: 0.000 min  
 Response: 117135914  
 Conc: 22.46 ng/ml