

Data Path : Z:\pestpcbsrv\HPCHEM1\ECD_D\Data\PD110421\
 Data File : PD066733.D
 Signal(s) : Signal #1: ECD1A.ch Signal #2: ECD2B.ch
 Acq On : 04 Nov 2021 14:59
 Operator : AR\AJ
 Sample : M4412-09
 Misc :
 ALS Vial : 14 Sample Multiplier: 1

Integration File signal 1: autoint1.e
 Integration File signal 2: autoint2.e
 Quant Time: Nov 08 04:57:05 2021
 Quant Method : Z:\pestpcbsrv\HPCHEM1\ECD_D\Method\PD102721CLP.M
 Quant Title : GC Extractables
 QLast Update : Wed Oct 27 16:50:52 2021
 Response via : Initial Calibration
 Integrator: ChemStation

Volume Inj. : 1 µl
 Signal #1 Phase : ZB-MR2 Signal #2 Phase: ZB-MR1
 Signal #1 Info : 30M x 0.32mm x0.2 Signal #2 Info : 30M x 0.32mm x 0.50µm

Compound	RT#1	RT#2	Resp#1	Resp#2	ng/ml	ng/ml

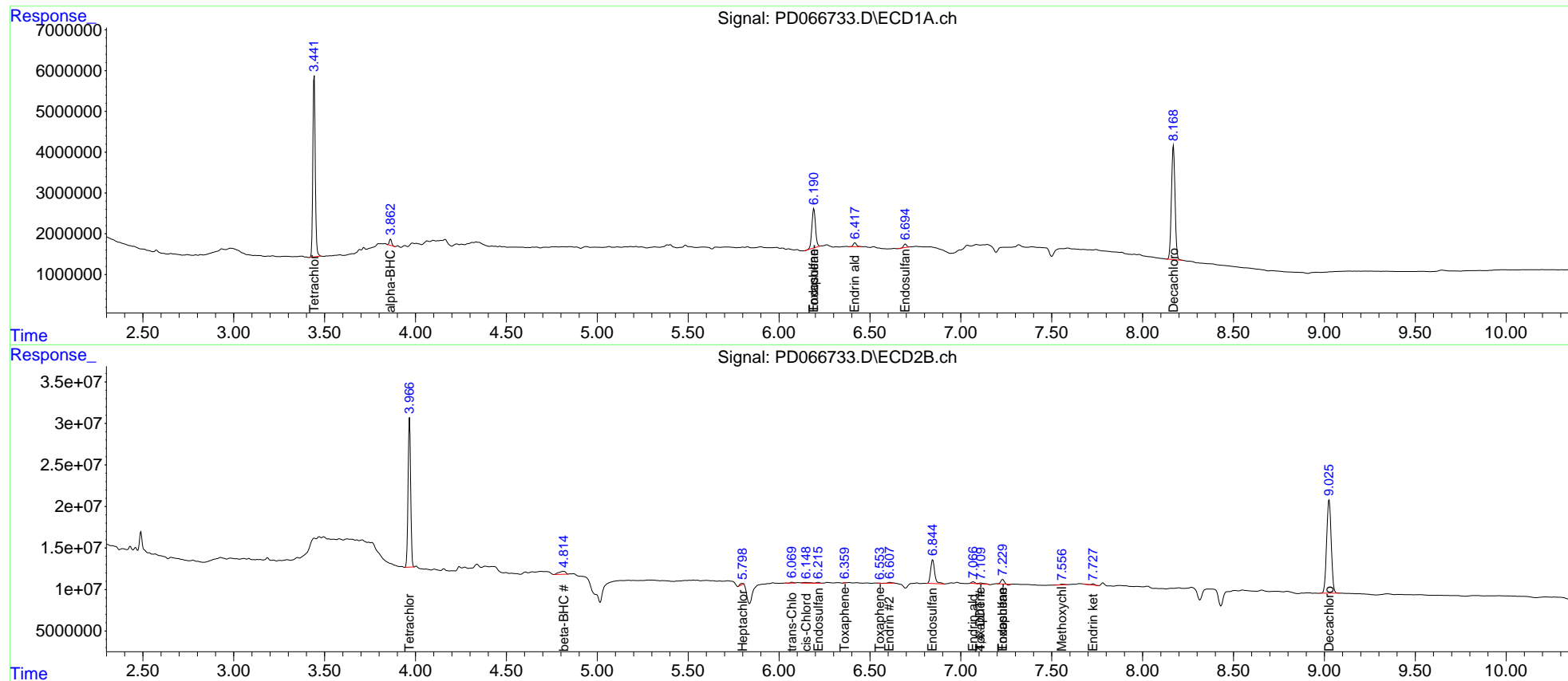
System Monitoring Compounds						
1) SA Tetrachlo...	3.443	3.967	41172664	178.4E6	21.299	20.602
27) SA Decachlor...	8.170	9.026	38448676	197.1E6	32.815	37.789
Target Compounds						
2) A alpha-BHC	3.863	4.384	1398541	-1575214	0.478	N.D. #
3) MA gamma-BHC...	0.000	4.642	0	691515	N.D.	<MDL
4) MA Heptachlor	0.000	5.128	0	242171	N.D.	<MDL
5) MB Aldrin	0.000	5.459	0	52575	N.D.	<MDL
6) B beta-BHC	0.000	4.815	0	9318606	N.D.	1.891
8) B Heptachlo...	0.000	5.800f	0	1577392	N.D.	0.210
9) A Endosulfan I	0.000	6.216	0	1219967	N.D.	0.156
10) B trans-Chl...	0.000	6.071	0	1214604	N.D.	0.141
11) B cis-Chlor...	0.000	6.149	0	2203466	N.D.	0.257
12) B 4,4'-DDE	0.000	6.326	0	369749	N.D.	<MDL
13) MA Dieldrin	0.000	6.427	0	285394	N.D.	<MDL
14) MA Endrin	0.000	6.609f	0	1511700	N.D.	0.223
15) B Endosulfa...	6.192f	6.846f	13233122	44779192	6.373	6.244
17) MA 4,4'-DDT	0.000	7.109	0	2362474	N.D.	0.358
18) B Endrin al...	6.418	7.068f	1147787	2509447	0.788	0.472 #
19) B Endosulfa...	6.695f	7.230	910067	6023681	0.499	0.874 #
20) A Methoxychlor	0.000	7.559	0	1209160	N.D.	0.374
21) B Endrin ke...	0.000	7.728	0	1556231	N.D.	0.199
22) Toxaphene-1	0.000	6.362	0	149855	N.D.	3.707
23) Toxaphene-2	6.192	6.554	13233122	225740	823.058	3.418 #
24) Toxaphene-3	0.000	7.109	0	2362474	N.D.	20.762
25) Toxaphene-4	0.000	7.230	0	6023681	N.D.	53.289

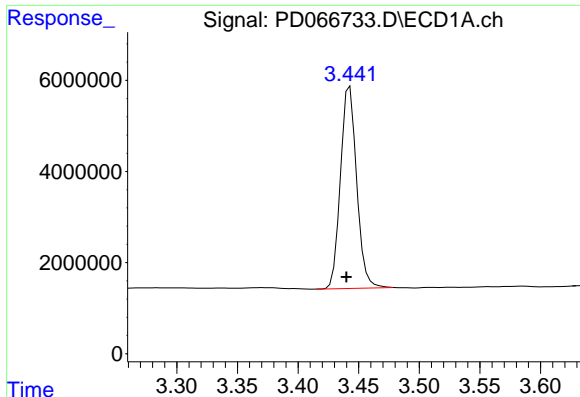
(f)=RT Delta > 1/2 Window (#)=Amounts differ by > 25% (m)=manual int.

Data Path : Z:\pestpcbsrv\HPCHEM1\ECD_D\Data\PD110421\
 Data File : PD066733.D
 Signal(s) : Signal #1: ECD1A.ch Signal #2: ECD2B.ch
 Acq On : 04 Nov 2021 14:59
 Operator : AR\AJ
 Sample : M4412-09
 Misc :
 ALS Vial : 14 Sample Multiplier: 1

Integration File signal 1: autoint1.e
 Integration File signal 2: autoint2.e
 Quant Time: Nov 08 04:57:05 2021
 Quant Method : Z:\pestpcbsrv\HPCHEM1\ECD_D\Method\PD102721CLP.M
 Quant Title : GC Extractables
 QLast Update : Wed Oct 27 16:50:52 2021
 Response via : Initial Calibration
 Integrator: ChemStation

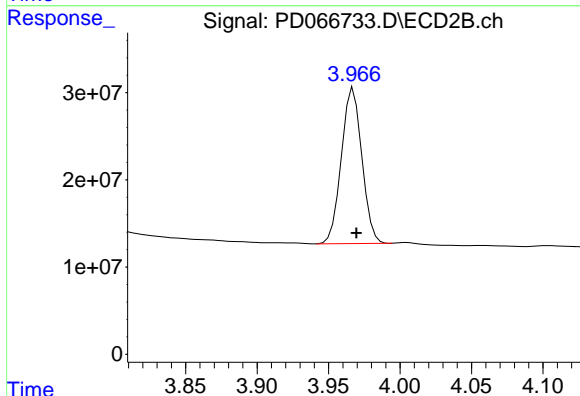
Volume Inj. : 1 µl
 Signal #1 Phase : ZB-MR2 Signal #2 Phase: ZB-MR1
 Signal #1 Info : 30M x 0.32mm x0.2 Signal #2 Info : 30M x 0.32mm x 0.50µm





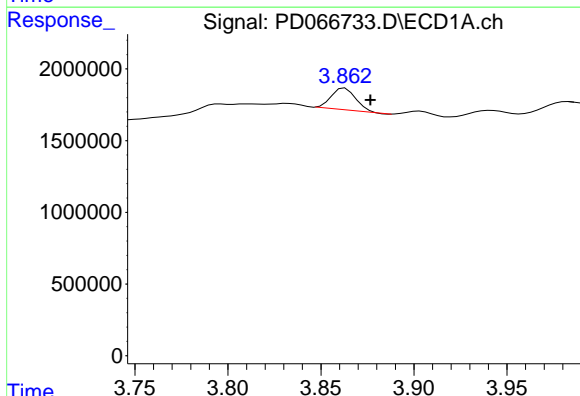
#1 Tetrachloro-m-xylene

R.T.: 3.443 min
 Delta R.T.: 0.003 min
 Response: 41172664
 Conc: 21.30 ng/ml



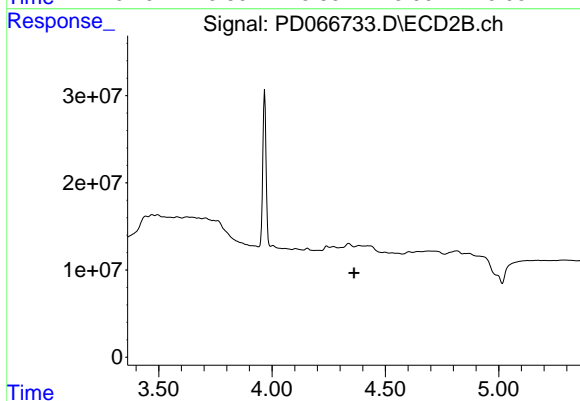
#1 Tetrachloro-m-xylene

R.T.: 3.967 min
 Delta R.T.: -0.002 min
 Response: 178426428
 Conc: 20.60 ng/ml



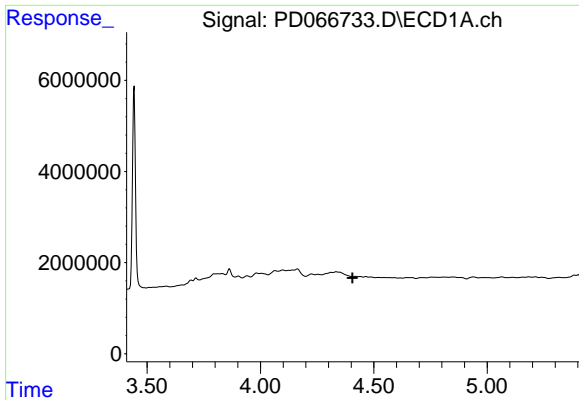
#2 alpha-BHC

R.T.: 3.863 min
 Delta R.T.: -0.014 min
 Response: 1398541
 Conc: 0.48 ng/ml



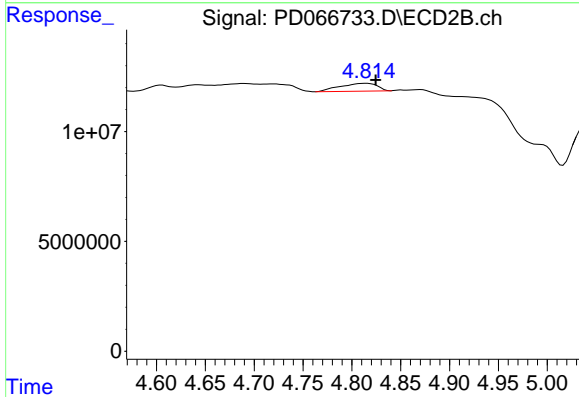
#2 alpha-BHC

R.T.: 4.384 min
 Delta R.T.: 0.022 min
 Response: -1575214
 Conc: N.D.



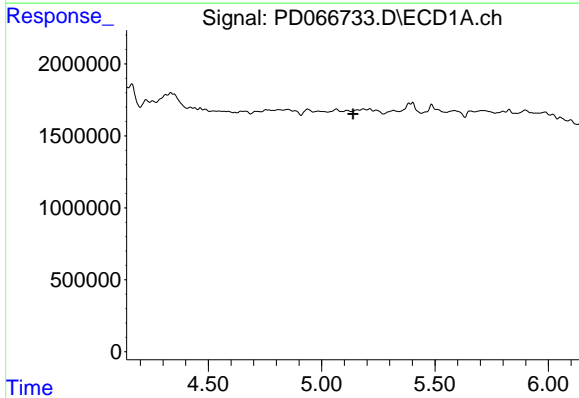
#6 beta-BHC

R.T.: 0.000 min
 Exp R.T. : 4.407 min
 Response: 0
 Conc: N.D.



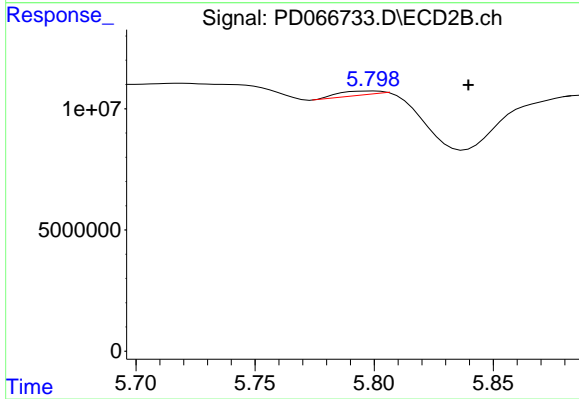
#6 beta-BHC

R.T.: 4.815 min
 Delta R.T.: -0.009 min
 Response: 9318606
 Conc: 1.89 ng/ml



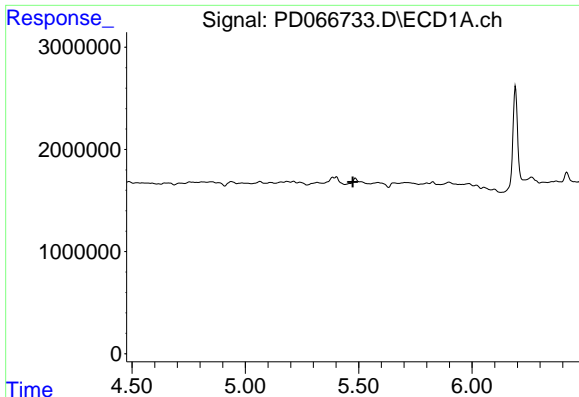
#8 Heptachlor epoxide

R.T.: 0.000 min
 Exp R.T. : 5.139 min
 Response: 0
 Conc: N.D.



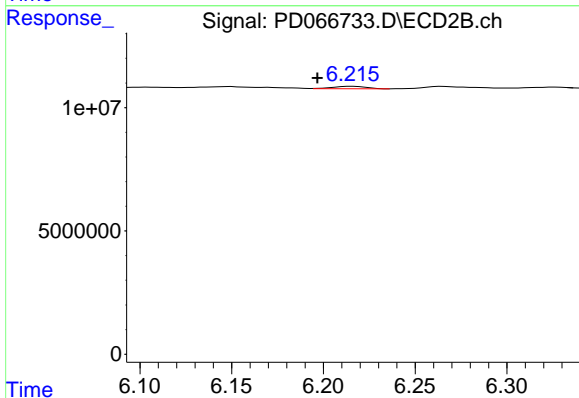
#8 Heptachlor epoxide

R.T.: 5.800 min
 Delta R.T.: -0.040 min
 Response: 1577392
 Conc: 0.21 ng/ml



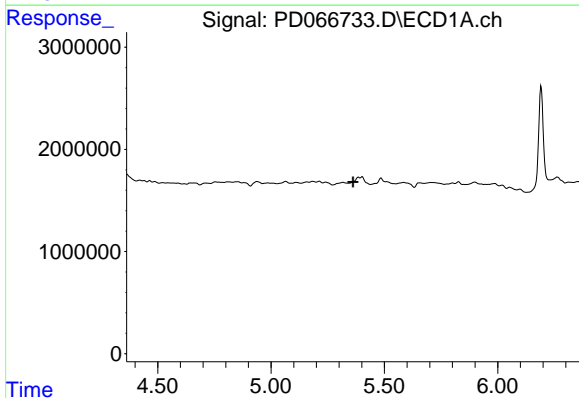
#9 Endosulfan I

R.T.: 0.000 min
 Exp R.T. : 5.475 min
 Response: 0
 Conc: N.D.



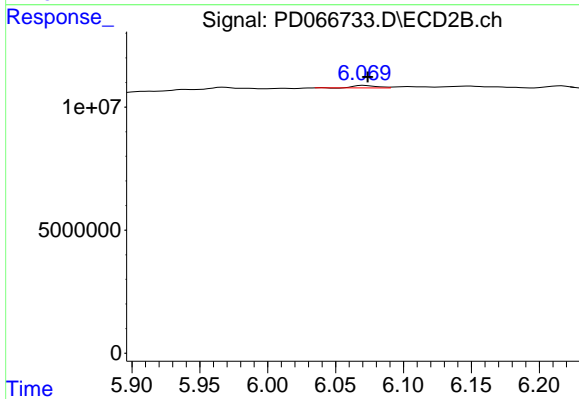
#9 Endosulfan I

R.T.: 6.216 min
 Delta R.T.: 0.019 min
 Response: 1219967
 Conc: 0.16 ng/ml



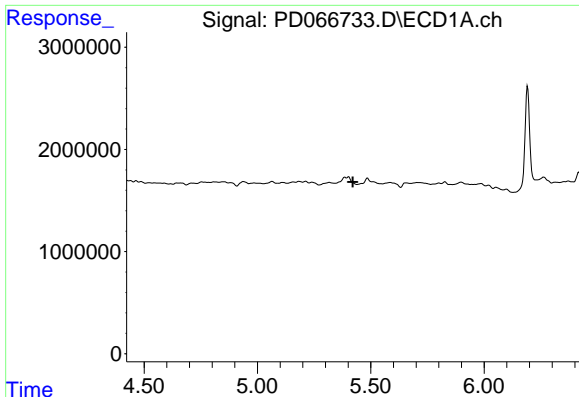
#10 trans-Chlordane

R.T.: 0.000 min
 Exp R.T. : 5.363 min
 Response: 0
 Conc: N.D.



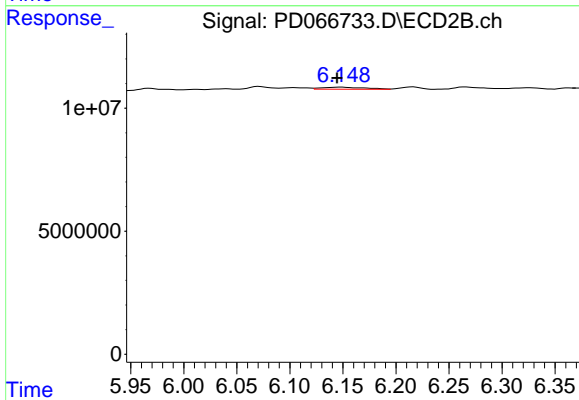
#10 trans-Chlordane

R.T.: 6.071 min
 Delta R.T.: -0.003 min
 Response: 1214604
 Conc: 0.14 ng/ml



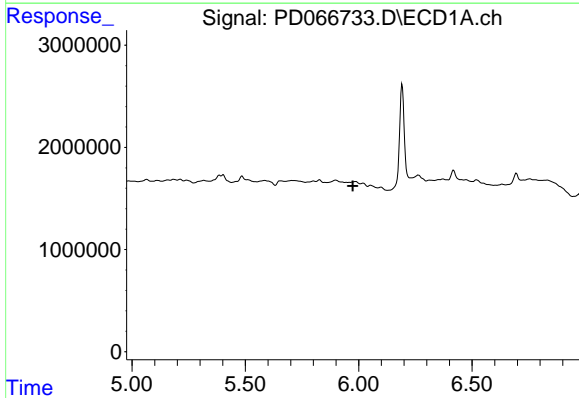
#11 cis-Chlordane

R.T.: 0.000 min
 Exp R.T. : 5.420 min
 Response: 0
 Conc: N.D.



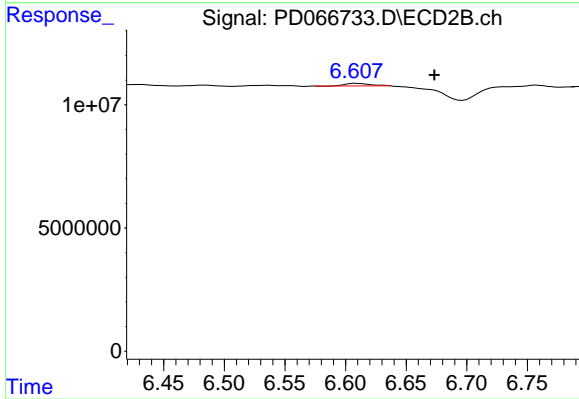
#11 cis-Chlordane

R.T.: 6.149 min
 Delta R.T.: 0.005 min
 Response: 2203466
 Conc: 0.26 ng/ml



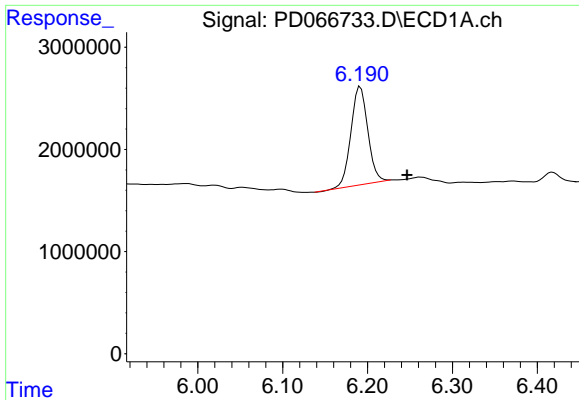
#14 Endrin

R.T.: 0.000 min
 Exp R.T. : 5.974 min
 Response: 0
 Conc: N.D.



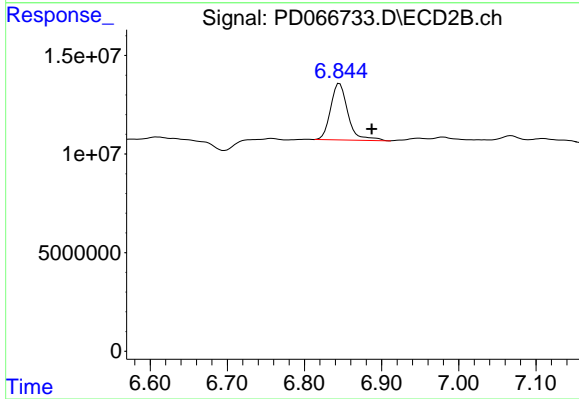
#14 Endrin

R.T.: 6.609 min
 Delta R.T.: -0.065 min
 Response: 1511700
 Conc: 0.22 ng/ml



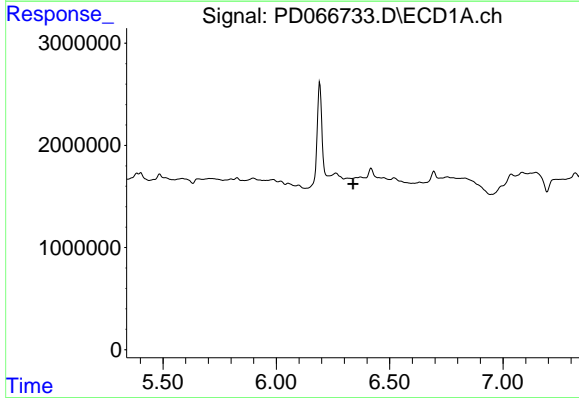
#15 Endosulfan II

R.T.: 6.192 min
Delta R.T.: -0.055 min
Response: 13233122
Conc: 6.37 ng/ml



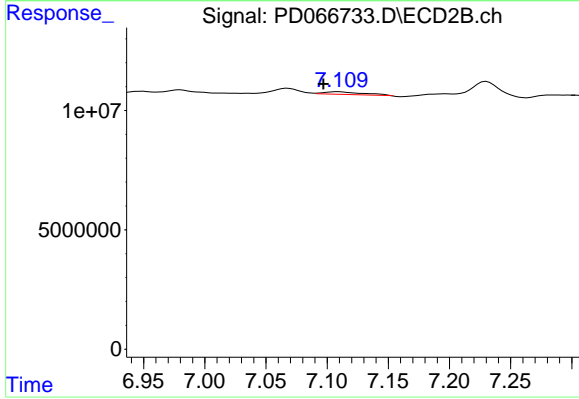
#15 Endosulfan II

R.T.: 6.846 min
Delta R.T.: -0.042 min
Response: 44779192
Conc: 6.24 ng/ml



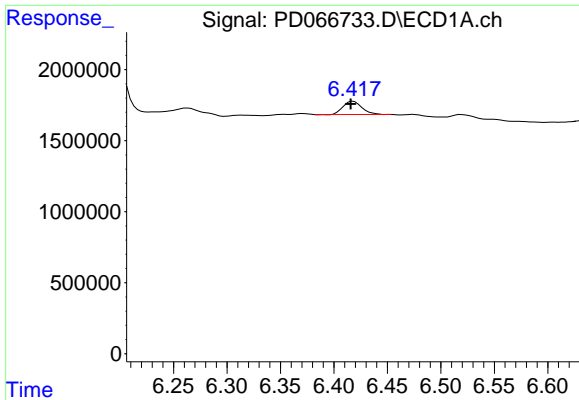
#17 4,4'-DDT

R.T.: 0.000 min
Exp R.T. : 6.338 min
Response: 0
Conc: N.D.



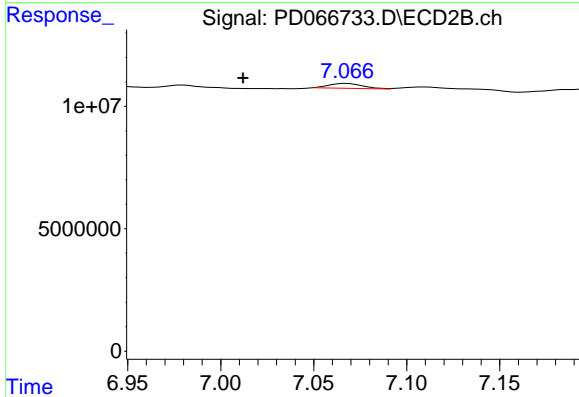
#17 4,4'-DDT

R.T.: 7.109 min
Delta R.T.: 0.012 min
Response: 2362474
Conc: 0.36 ng/ml



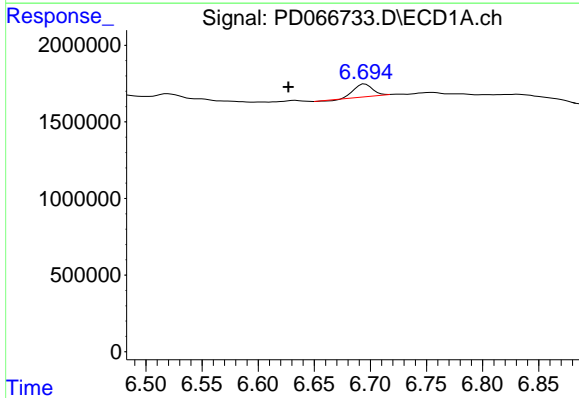
#18 Endrin aldehyde

R.T.: 6.418 min
 Delta R.T.: 0.002 min
 Response: 1147787
 Conc: 0.79 ng/ml



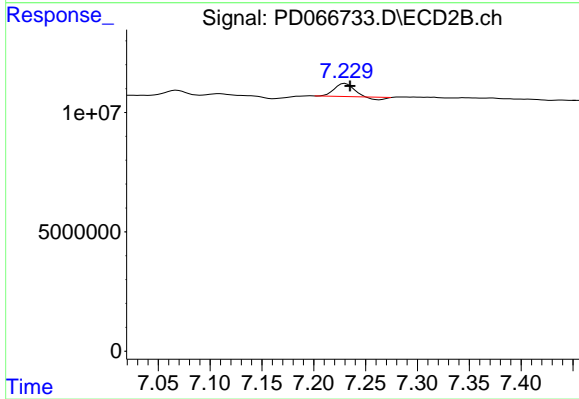
#18 Endrin aldehyde

R.T.: 7.068 min
 Delta R.T.: 0.056 min
 Response: 2509447
 Conc: 0.47 ng/ml



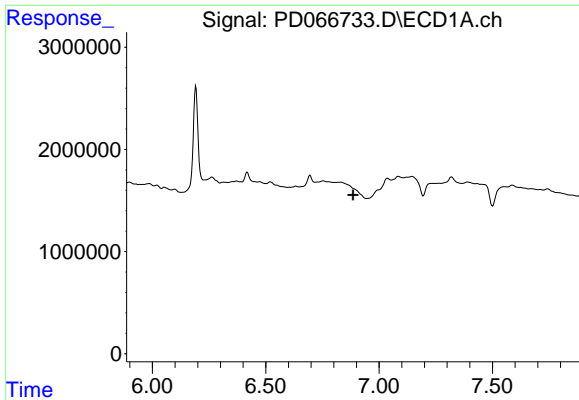
#19 Endosulfan Sulfate

R.T.: 6.695 min
 Delta R.T.: 0.068 min
 Response: 910067
 Conc: 0.50 ng/ml



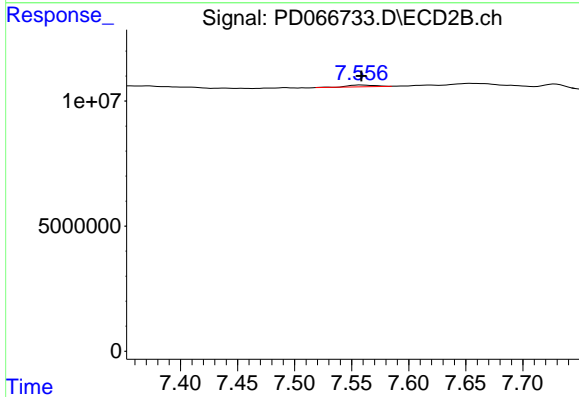
#19 Endosulfan Sulfate

R.T.: 7.230 min
 Delta R.T.: -0.005 min
 Response: 6023681
 Conc: 0.87 ng/ml



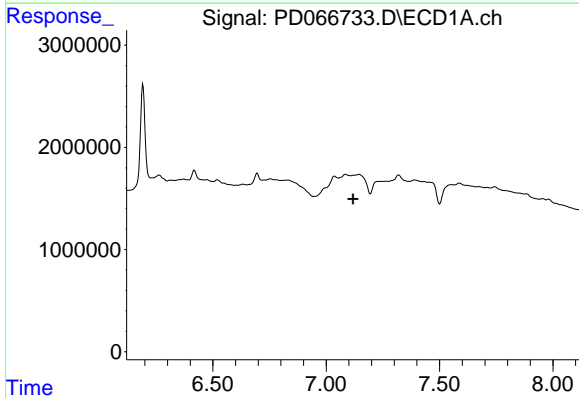
#20 Methoxychlor

R.T.: 0.000 min
 Exp R.T. : 6.886 min
 Response: 0
 Conc: N.D.



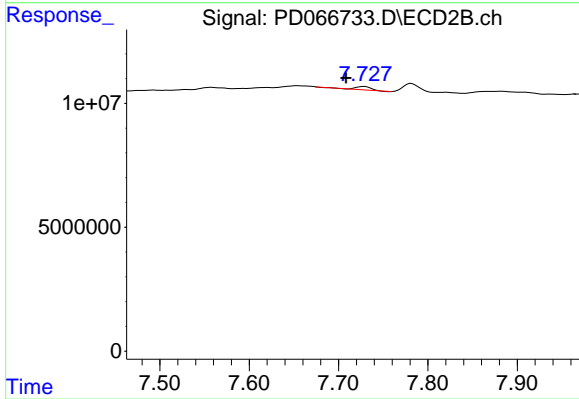
#20 Methoxychlor

R.T.: 7.559 min
 Delta R.T.: 0.000 min
 Response: 1209160
 Conc: 0.37 ng/ml



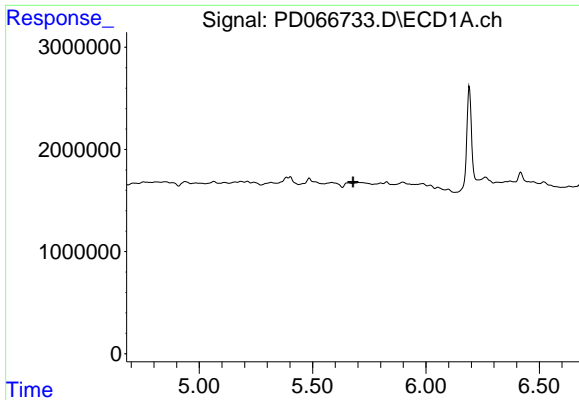
#21 Endrin ketone

R.T.: 0.000 min
 Exp R.T. : 7.119 min
 Response: 0
 Conc: N.D.



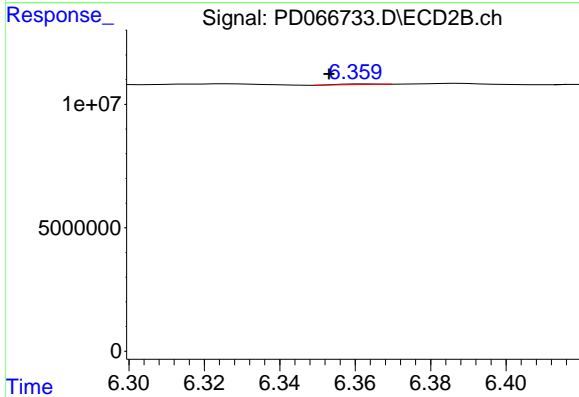
#21 Endrin ketone

R.T.: 7.728 min
 Delta R.T.: 0.020 min
 Response: 1556231
 Conc: 0.20 ng/ml



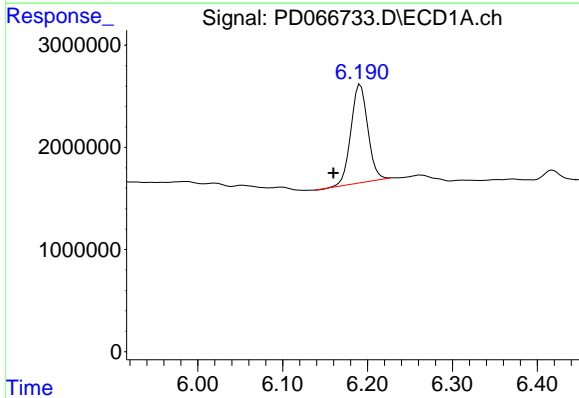
#22 Toxaphene-1

R.T.: 0.000 min
 Exp R.T. : 5.679 min
 Response: 0
 Conc: N.D.



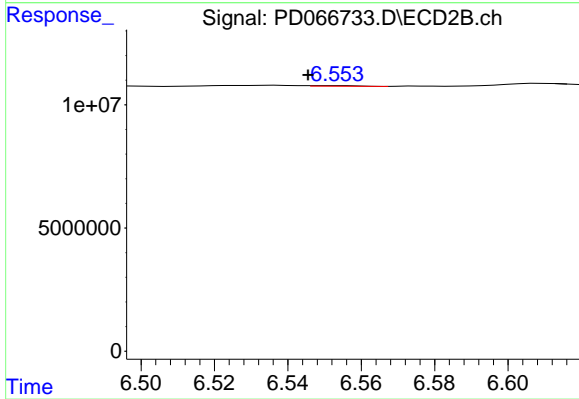
#22 Toxaphene-1

R.T.: 6.362 min
 Delta R.T.: 0.009 min
 Response: 149855
 Conc: 3.71 ng/ml



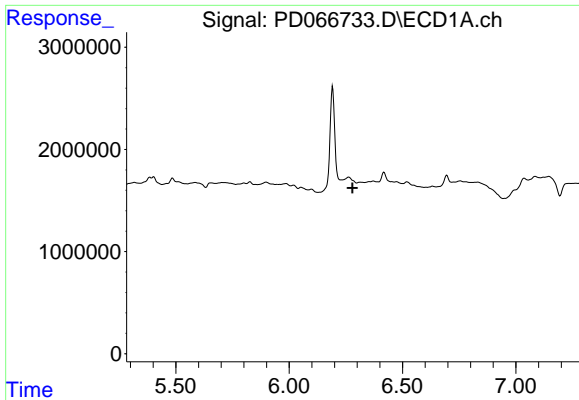
#23 Toxaphene-2

R.T.: 6.192 min
 Delta R.T.: 0.032 min
 Response: 13233122
 Conc: 823.06 ng/ml



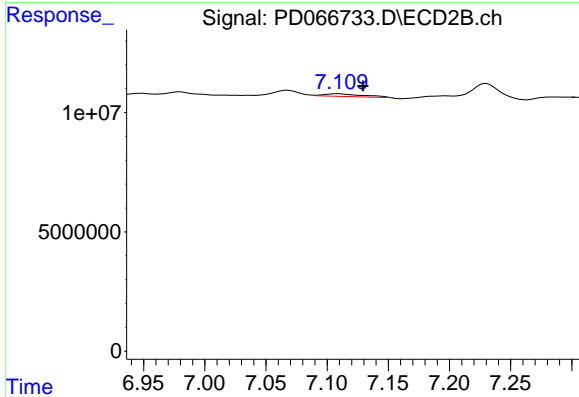
#23 Toxaphene-2

R.T.: 6.554 min
 Delta R.T.: 0.008 min
 Response: 225740
 Conc: 3.42 ng/ml



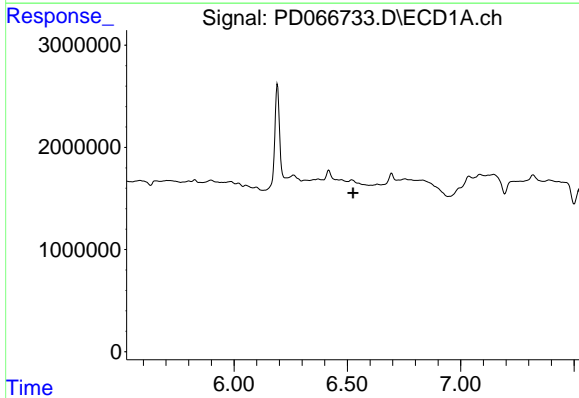
#24 Toxaphene-3

R.T.: 0.000 min
 Exp R.T. : 6.280 min
 Response: 0
 Conc: N.D.



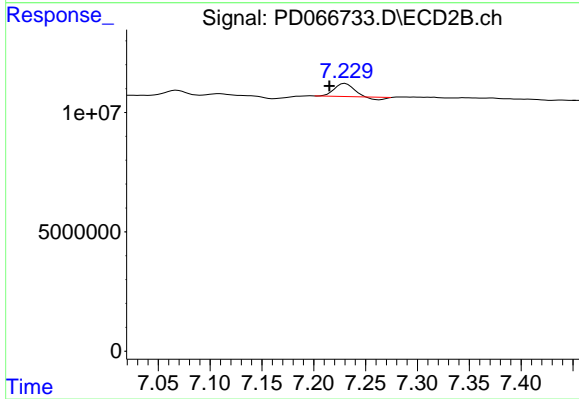
#24 Toxaphene-3

R.T.: 7.109 min
 Delta R.T.: -0.020 min
 Response: 2362474
 Conc: 20.76 ng/ml



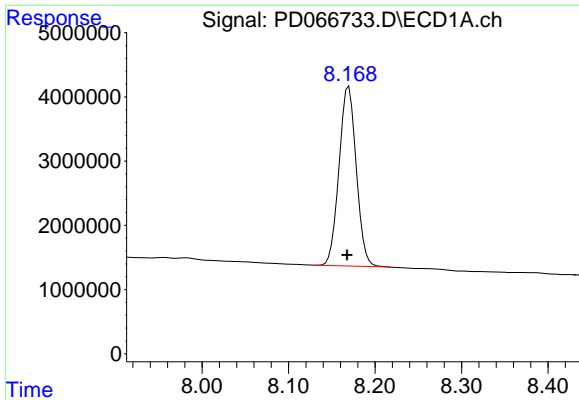
#25 Toxaphene-4

R.T.: 0.000 min
 Exp R.T. : 6.525 min
 Response: 0
 Conc: N.D.



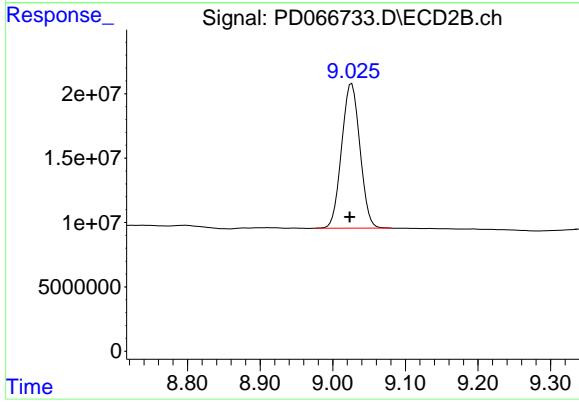
#25 Toxaphene-4

R.T.: 7.230 min
 Delta R.T.: 0.015 min
 Response: 6023681
 Conc: 53.29 ng/ml



#27 Decachlorobiphenyl

R.T.: 8.170 min
Delta R.T.: 0.002 min
Response: 38448676
Conc: 32.82 ng/ml



#27 Decachlorobiphenyl

R.T.: 9.026 min
Delta R.T.: 0.003 min
Response: 197080346
Conc: 37.79 ng/ml