

Data Path : Z:\pestpcbsrv\HPCHEM1\ECD_D\Data\PD110519\
 Data File : PD055827.D
 Signal(s) : Signal #1: ECD1A.ch Signal #2: ECD2B.ch
 Acq On : 05 Nov 2019 11:39
 Operator : SG\AJ
 Sample : K5655-07
 Misc :
 ALS Vial : 6 Sample Multiplier: 1

Instrument :
 ECD_D
 ClientSampleId :
 PIBLK05

Integration File signal 1: autoint1.e
 Integration File signal 2: autoint2.e
 Quant Time: Nov 06 00:35:12 2019
 Quant Method : Z:\pestpcbsrv\HPCHEM1\ECD_D\Method\PD110319CLP.M
 Quant Title : GC Extractables
 QLast Update : Sat Nov 02 07:20:38 2019
 Response via : Initial Calibration
 Integrator: ChemStation

Volume Inj. : 1 µl
 Signal #1 Phase : ZB-MR2 Signal #2 Phase: ZB-MR1
 Signal #1 Info : 30M x 0.32mm x0.2 Signal #2 Info : 30M x 0.32mm x 0.50µm

Compound	RT#1	RT#2	Resp#1	Resp#2	ng/ml	ng/ml
----------	------	------	--------	--------	-------	-------

System Monitoring Compounds

Target Compounds

3) MA	gamma-BHC...	3.998	4.631	52967460	72012554	51.784	51.114
4) MA	Heptachlor	4.283	5.137	45619195	72498300	48.182	49.849
5) MB	Aldrin	4.523	5.441	48701892	70374503	52.567	51.289
6) B	beta-BHC	4.283f	0.000	45619195	0	100.860	N.D. #
13) MA	Dieldrin	5.531	6.436	99783527	146.2E6	106.085	103.415
14) MA	Endrin	5.784	6.653	83837736	121.9E6	104.506	105.914
16) A	4,4'-DDD	0.000	6.776	0	1375509	N.D.	1.232
17) MA	4,4'-DDT	6.154	7.073	68414755	112.0E6	105.575	103.044
18) B	Endrin al...	6.154f	0.000	68414755	0	95.768	N.D. #
21) B	Endrin ke...	0.000	7.676	0	2814749	N.D.	2.134
22)	Toxaphene-1	5.531	0.000	99783527	0	12065.191	N.D. #
23)	Toxaphene-2	0.000	6.653	0	121.9E6	N.D.	10159.143
24)	Toxaphene-3	0.000	7.073	0	112.0E6	N.D.	6046.051
25)	Toxaphene-4	0.000	7.073	0	112.0E6	N.D.	2174.862

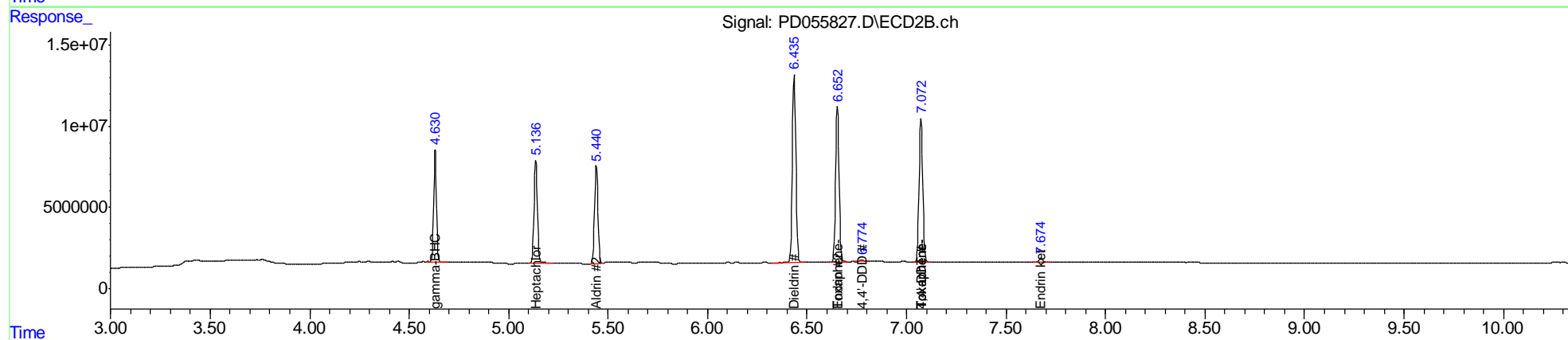
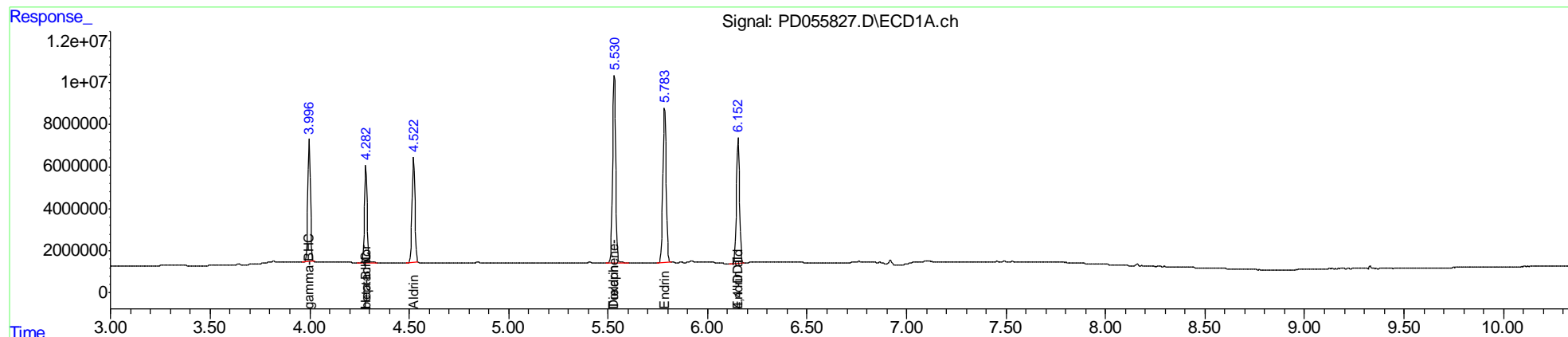
(f)=RT Delta > 1/2 Window (#)=Amounts differ by > 25% (m)=manual int.

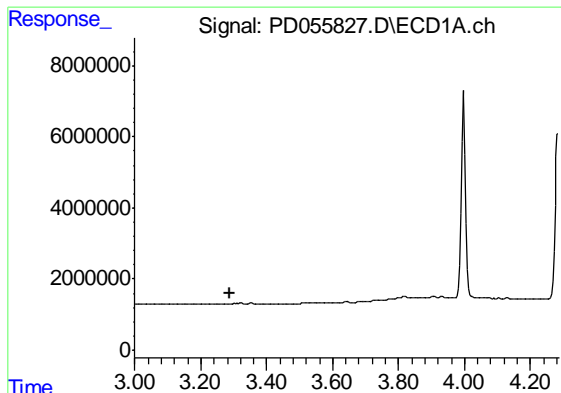
Data Path : Z:\pestpcbsrv\HPCHEM1\ECD_D\Data\PD110519\
 Data File : PD055827.D
 Signal(s) : Signal #1: ECD1A.ch Signal #2: ECD2B.ch
 Acq On : 05 Nov 2019 11:39
 Operator : SG\AJ
 Sample : K5655-07
 Misc :
 ALS Vial : 6 Sample Multiplier: 1

Instrument :
 ECD_D
 ClientSampleId :
 PIBLK05

Integration File signal 1: autoint1.e
 Integration File signal 2: autoint2.e
 Quant Time: Nov 06 00:35:12 2019
 Quant Method : Z:\pestpcbsrv\HPCHEM1\ECD_D\Method\PD110319CLP.M
 Quant Title : GC Extractables
 QLast Update : Sat Nov 02 07:20:38 2019
 Response via : Initial Calibration
 Integrator: ChemStation

Volume Inj. : 1 µl
 Signal #1 Phase : ZB-MR2 Signal #2 Phase: ZB-MR1
 Signal #1 Info : 30M x 0.32mm x0.2 Signal #2 Info : 30M x 0.32mm x 0.50µm

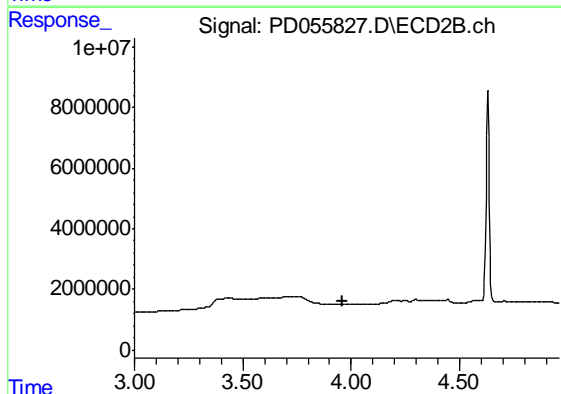




#1 Tetrachloro-m-xylene

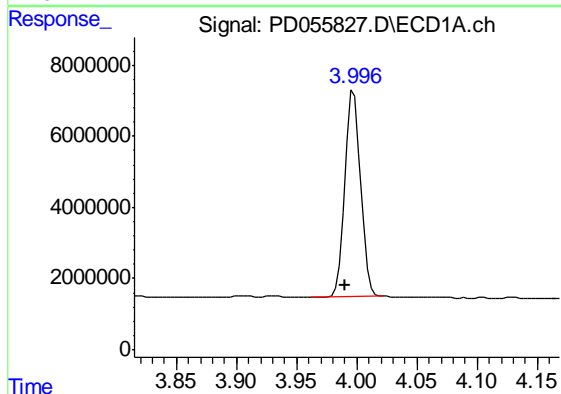
R.T.: 0.000 min
Exp R.T. : 3.289 min
Response: 0
Conc: N.D.

Instrument :
ECD_D
ClientSampleId :
PIBLK05



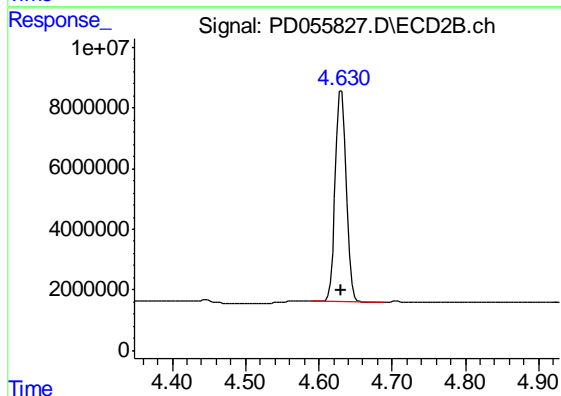
#1 Tetrachloro-m-xylene

R.T.: 0.000 min
Exp R.T. : 3.962 min
Response: 0
Conc: N.D.



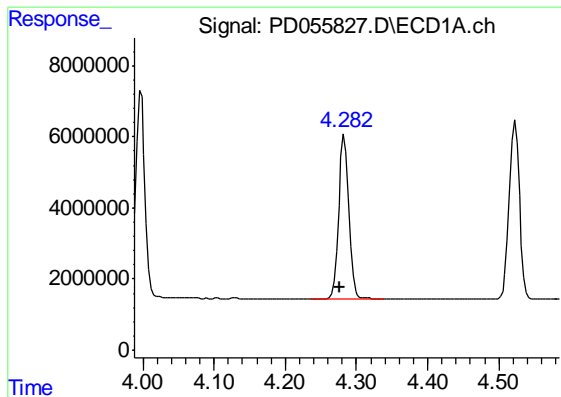
#3 gamma-BHC (Lindane)

R.T.: 3.998 min
Delta R.T.: 0.007 min
Response: 52967460
Conc: 51.78 ng/ml



#3 gamma-BHC (Lindane)

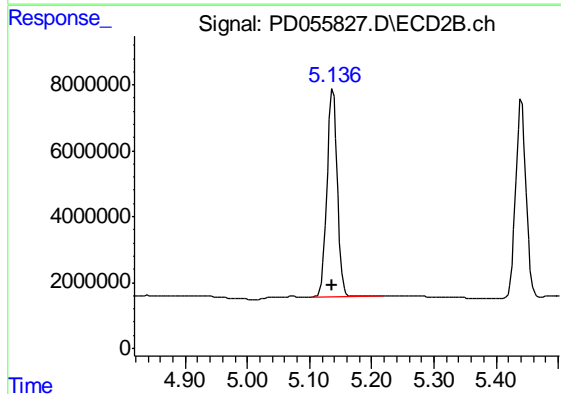
R.T.: 4.631 min
Delta R.T.: 0.000 min
Response: 72012554
Conc: 51.11 ng/ml



#4 Heptachlor

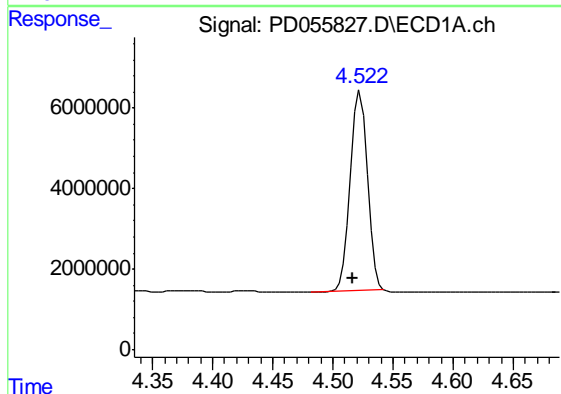
R.T.: 4.283 min
Delta R.T.: 0.007 min
Response: 45619195
Conc: 48.18 ng/ml

Instrument :
ECD_D
ClientSampleId :
PIBLK05



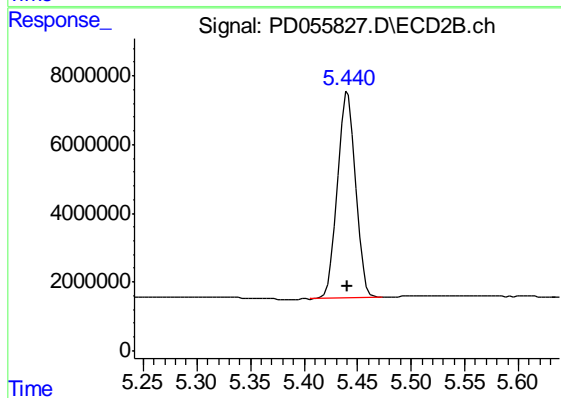
#4 Heptachlor

R.T.: 5.137 min
Delta R.T.: 0.000 min
Response: 72498300
Conc: 49.85 ng/ml



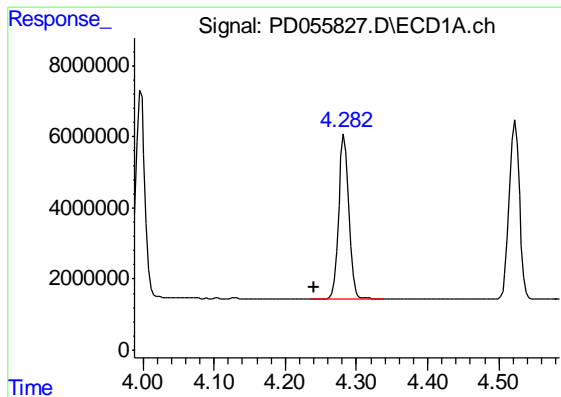
#5 Aldrin

R.T.: 4.523 min
Delta R.T.: 0.007 min
Response: 48701892
Conc: 52.57 ng/ml



#5 Aldrin

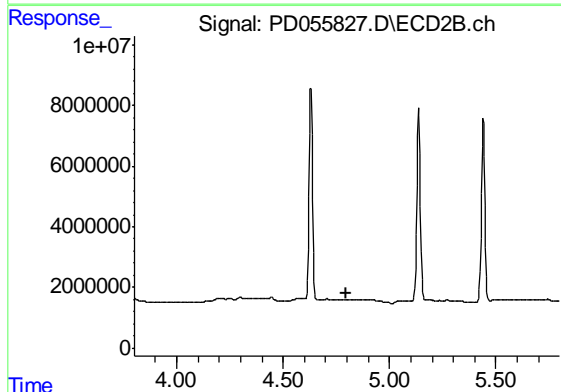
R.T.: 5.441 min
Delta R.T.: 0.000 min
Response: 70374503
Conc: 51.29 ng/ml



#6 beta-BHC

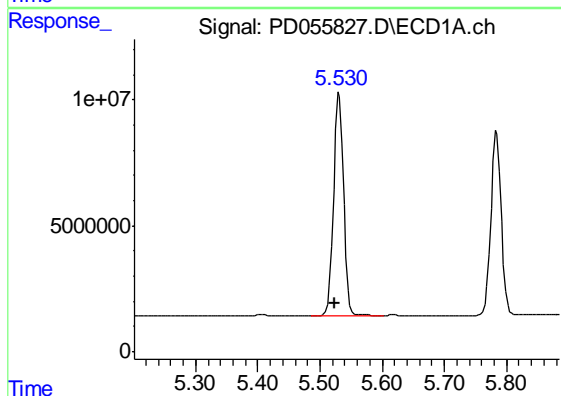
R.T.: 4.283 min
 Delta R.T.: 0.043 min
 Response: 45619195
 Conc: 100.86 ng/ml

Instrument :
 ECD_D
 ClientSampleId :
 PIBLK05



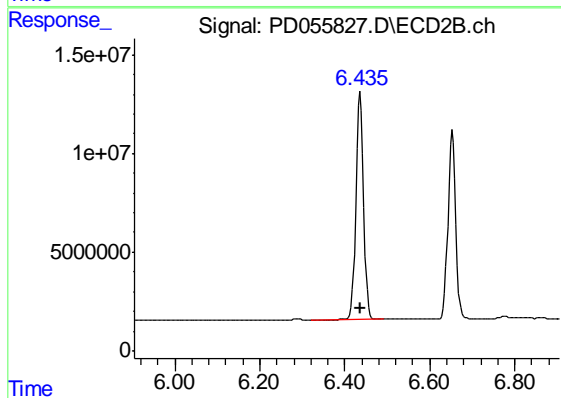
#6 beta-BHC

R.T.: 0.000 min
 Exp R.T. : 4.799 min
 Response: 0
 Conc: N.D.



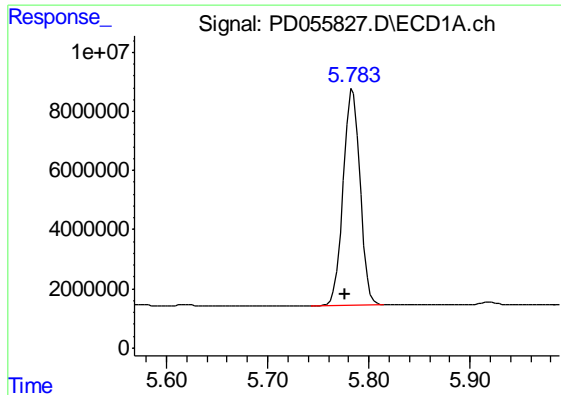
#13 Dieldrin

R.T.: 5.531 min
 Delta R.T.: 0.008 min
 Response: 99783527
 Conc: 106.08 ng/ml



#13 Dieldrin

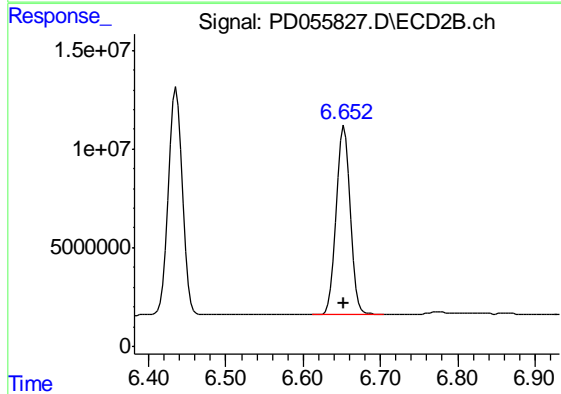
R.T.: 6.436 min
 Delta R.T.: 0.000 min
 Response: 146185651
 Conc: 103.41 ng/ml



#14 Endrin

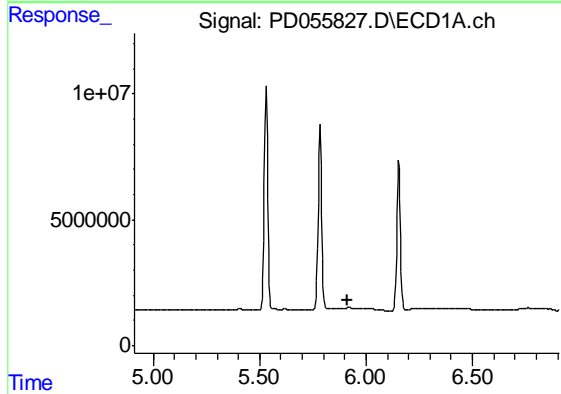
R.T.: 5.784 min
 Delta R.T.: 0.008 min
 Response: 83837736
 Conc: 104.51 ng/ml

Instrument :
 ECD_D
 ClientSampleId :
 PIBLK05



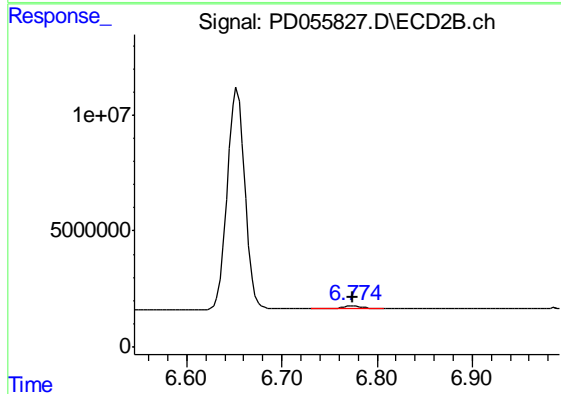
#14 Endrin

R.T.: 6.653 min
 Delta R.T.: 0.001 min
 Response: 121936971
 Conc: 105.91 ng/ml



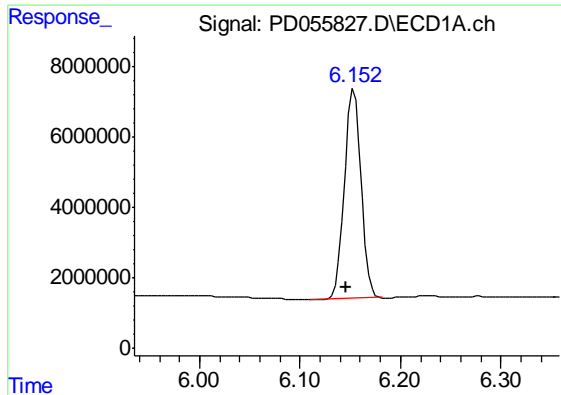
#16 4,4'-DDD

R.T.: 0.000 min
 Exp R.T. : 5.911 min
 Response: 0
 Conc: N.D.



#16 4,4'-DDD

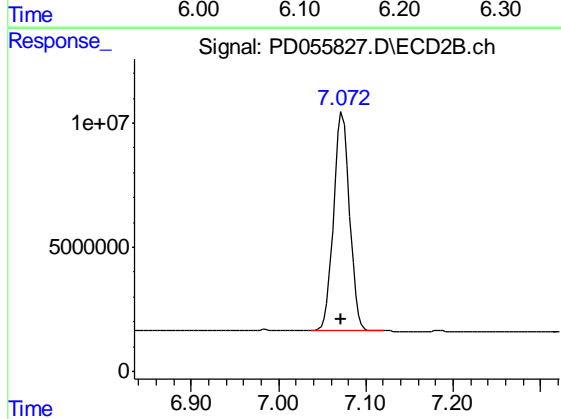
R.T.: 6.776 min
 Delta R.T.: 0.001 min
 Response: 1375509
 Conc: 1.23 ng/ml



#17 4,4'-DDT

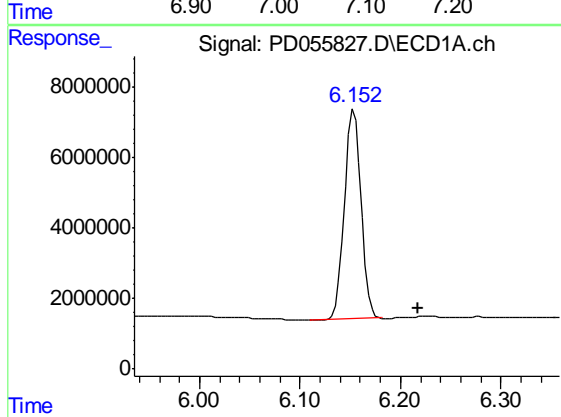
R.T.: 6.154 min
 Delta R.T.: 0.007 min
 Response: 68414755
 Conc: 105.57 ng/ml

Instrument :
 ECD_D
 ClientSampleId :
 PIBLK05



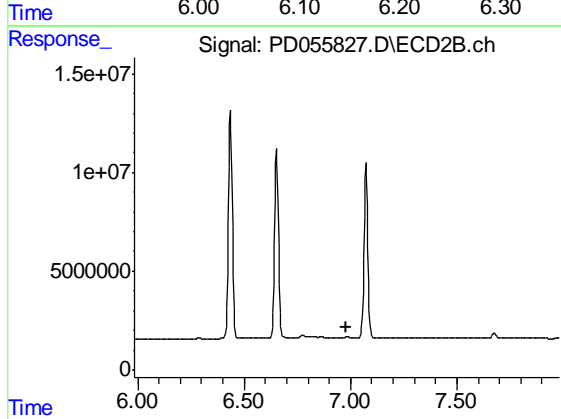
#17 4,4'-DDT

R.T.: 7.073 min
 Delta R.T.: 0.001 min
 Response: 112047416
 Conc: 103.04 ng/ml



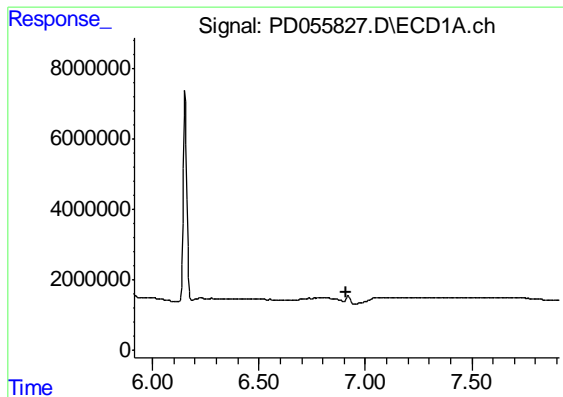
#18 Endrin aldehyde

R.T.: 6.154 min
 Delta R.T.: -0.063 min
 Response: 68414755
 Conc: 95.77 ng/ml



#18 Endrin aldehyde

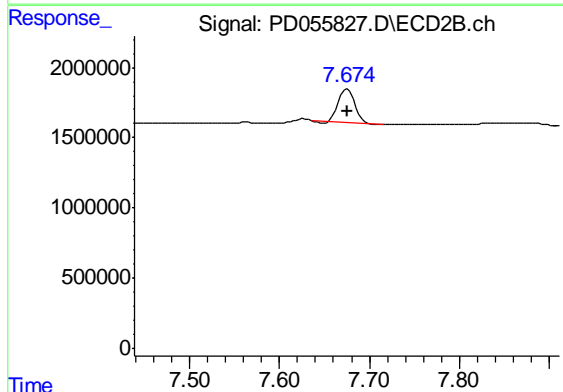
R.T.: 0.000 min
 Exp R.T. : 6.983 min
 Response: 0
 Conc: N.D.



#21 Endrin ketone

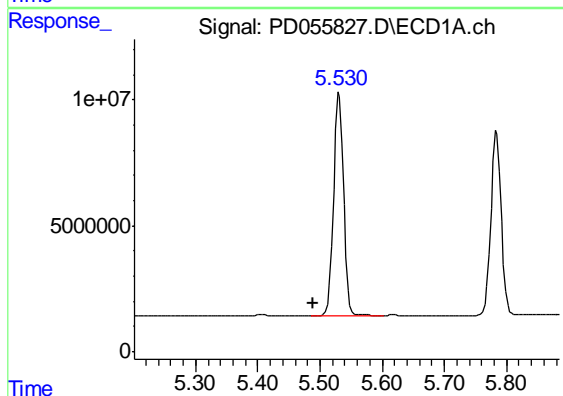
R.T.: 0.000 min
 Exp R.T. : 6.913 min
 Response: 0
 Conc: N.D.

Instrument :
 ECD_D
 ClientSampleId :
 PIBLK05



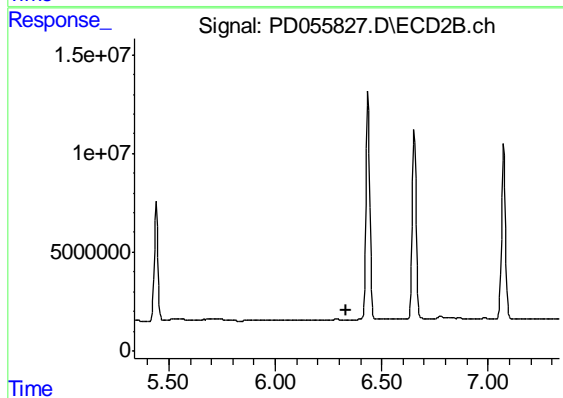
#21 Endrin ketone

R.T.: 7.676 min
 Delta R.T.: 0.000 min
 Response: 2814749
 Conc: 2.13 ng/ml



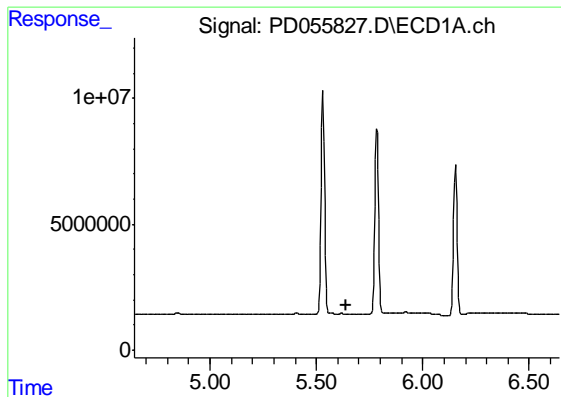
#22 Toxaphene-1

R.T.: 5.531 min
 Delta R.T.: 0.043 min
 Response: 99783527
 Conc: 12065.19 ng/ml



#22 Toxaphene-1

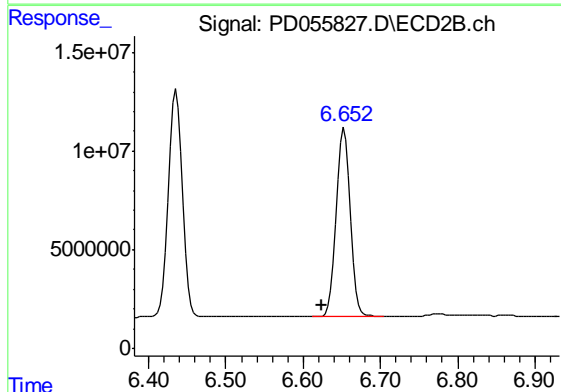
R.T.: 0.000 min
 Exp R.T. : 6.336 min
 Response: 0
 Conc: N.D.



#23 Toxaphene-2

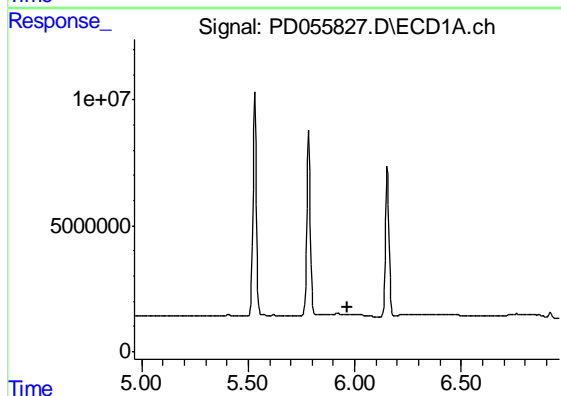
R.T.: 0.000 min
 Exp R.T. : 5.643 min
 Response: 0
 Conc: N.D.

Instrument :
 ECD_D
 ClientSampled :
 PIBLK05



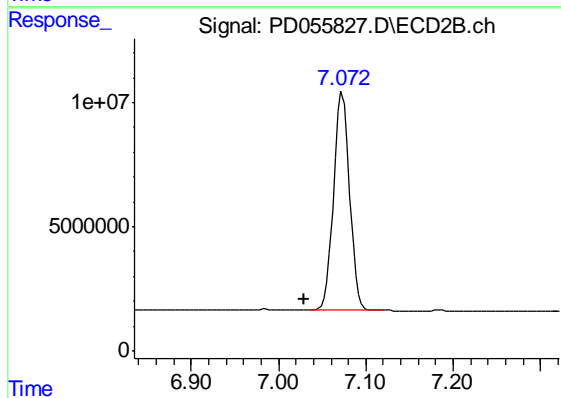
#23 Toxaphene-2

R.T.: 6.653 min
 Delta R.T.: 0.028 min
 Response: 121936971
 Conc: 10159.14 ng/ml



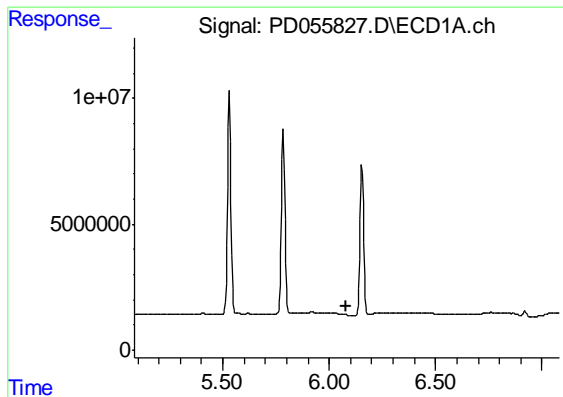
#24 Toxaphene-3

R.T.: 0.000 min
 Exp R.T. : 5.964 min
 Response: 0
 Conc: N.D.



#24 Toxaphene-3

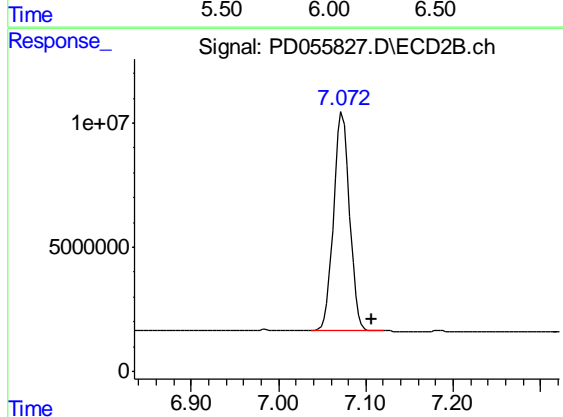
R.T.: 7.073 min
 Delta R.T.: 0.044 min
 Response: 112047416
 Conc: 6046.05 ng/ml



#25 Toxaphene-4

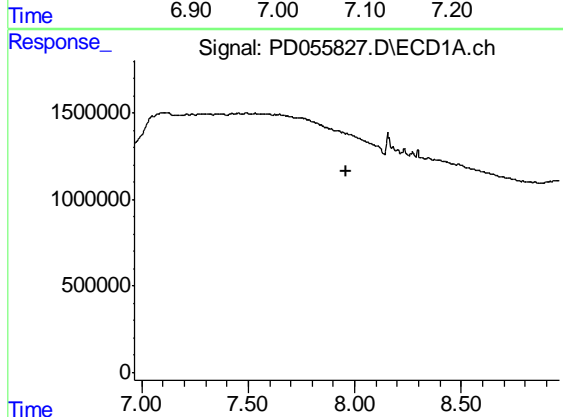
R.T.: 0.000 min
 Exp R.T. : 6.082 min
 Response: 0
 Conc: N.D.

Instrument :
 ECD_D
 ClientSampleId :
 PIBLK05



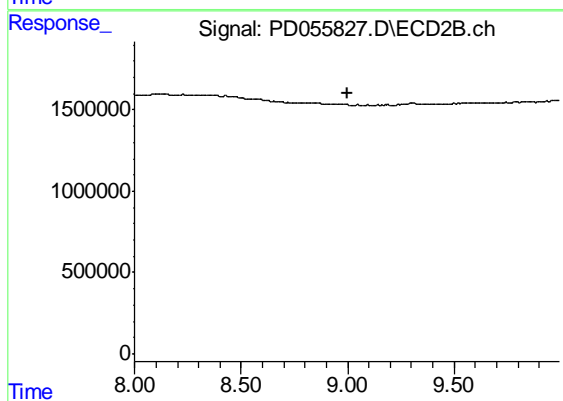
#25 Toxaphene-4

R.T.: 7.073 min
 Delta R.T.: -0.033 min
 Response: 112047416
 Conc: 2174.86 ng/ml



#27 Decachlorobiphenyl

R.T.: 0.000 min
 Exp R.T. : 7.963 min
 Response: 0
 Conc: N.D.



#27 Decachlorobiphenyl

R.T.: 0.000 min
 Exp R.T. : 8.997 min
 Response: 0
 Conc: N.D.