

Data Path : Z:\pestpcbsrv\HPCHEM1\ECD_D\Data\PD110524\
 Data File : PD086347.D
 Signal(s) : Signal #1: ECD1A.ch Signal #2: ECD2B.ch
 Acq On : 05 Nov 2024 11:46
 Operator : ARVAJ
 Sample : P4634-10
 Misc :
 ALS Vial : 16 Sample Multiplier: 1

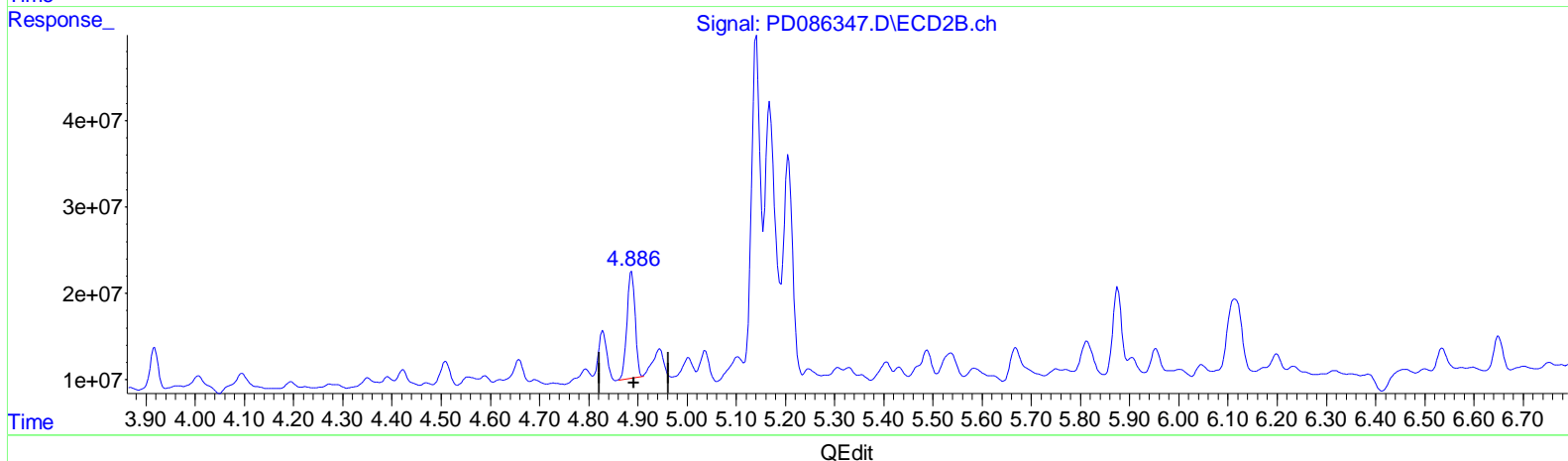
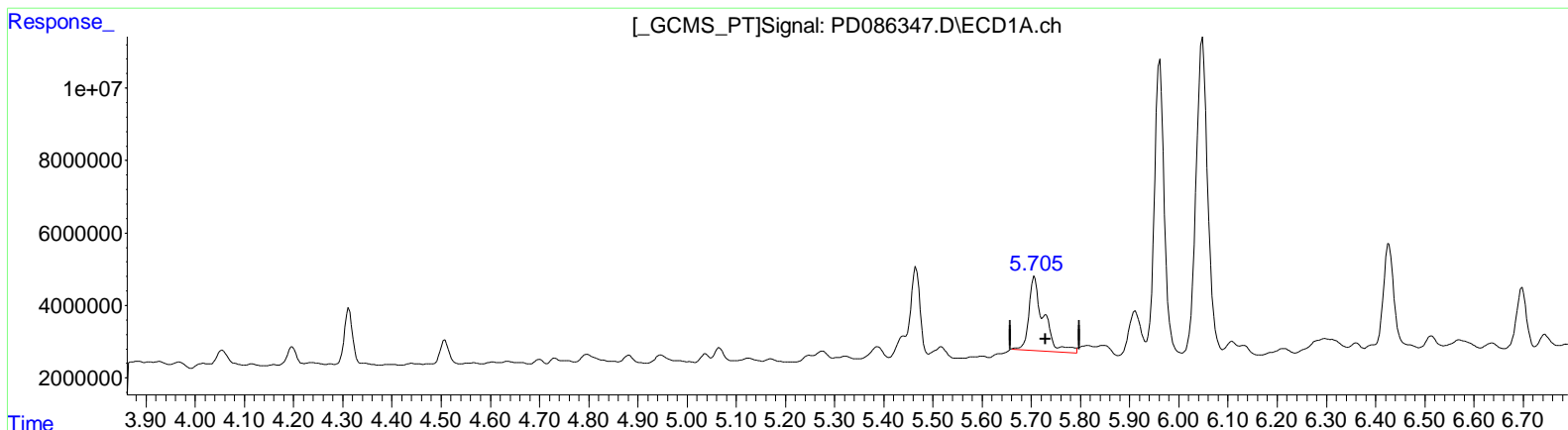
Instrument :
 ECD_D
ClientSampleId :
 CC0P9

Manual Integrations APPROVED

Reviewed By : Abdul Mirza 11/06/2024
 Supervised By : Ankita Jodhani 11/06/2024

Integration File signal 1: autoint1.e
 Integration File signal 2: autoint2.e
 Quant Time: Nov 06 00:20:22 2024
 Quant Method : Z:\pestpcbsrv\HPCHEM1\ECD_D\Method\PD102524CLP.M
 Quant Title : GC Extractables
 QLast Update : Fri Oct 25 14:36:38 2024
 Response via : Initial Calibration
 Integrator: ChemStation

Volume Inj. : 1 µl
 Signal #1 Phase : ZB-MR1 Signal #2 Phase: ZB-MR2
 Signal #1 Info : 30M x 0.32mm x 0.5 Signal #2 Info : 30M x 0.32mm x 0.25µm



(8) Heptachlor epoxide (B)
 5.707min 18.612 ng/ml
 response 42533895

(8) Heptachlor epoxide #2 (B)
 4.888min 11.222 ng/ml
 response 140727185

Data Path : Z:\pestpcbsrv\HPCHEM1\ECD_D\Data\PD110524\
 Data File : PD086347.D
 Signal(s) : Signal #1: ECD1A.ch Signal #2: ECD2B.ch
 Acq On : 05 Nov 2024 11:46
 Operator : ARVAJ
 Sample : P4634-10
 Misc :
 ALS Vial : 16 Sample Multiplier: 1

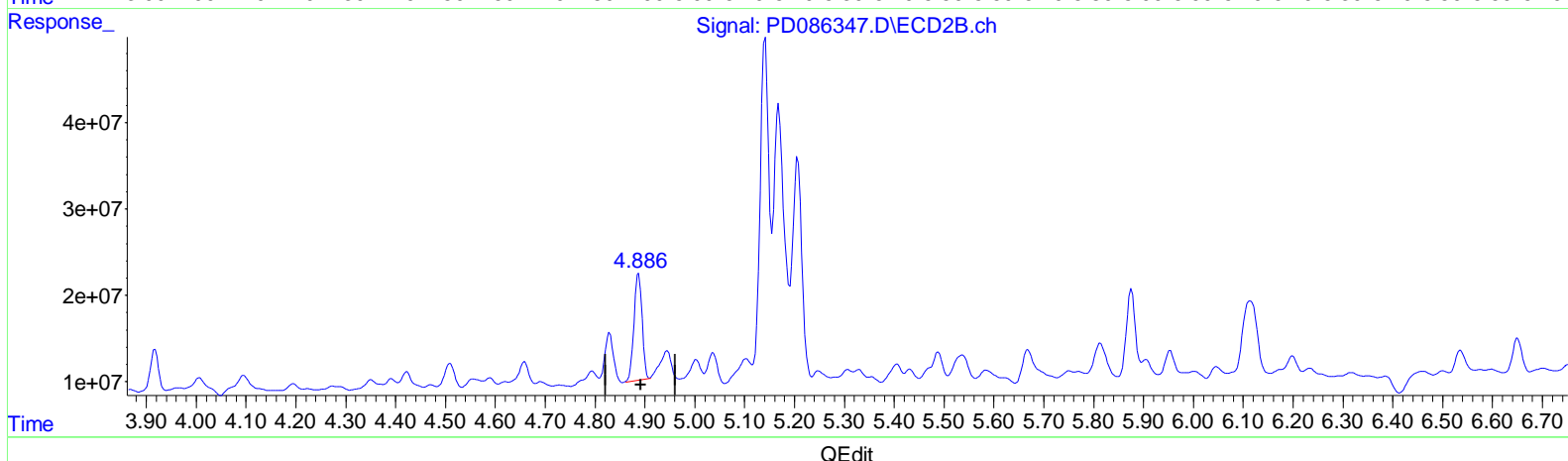
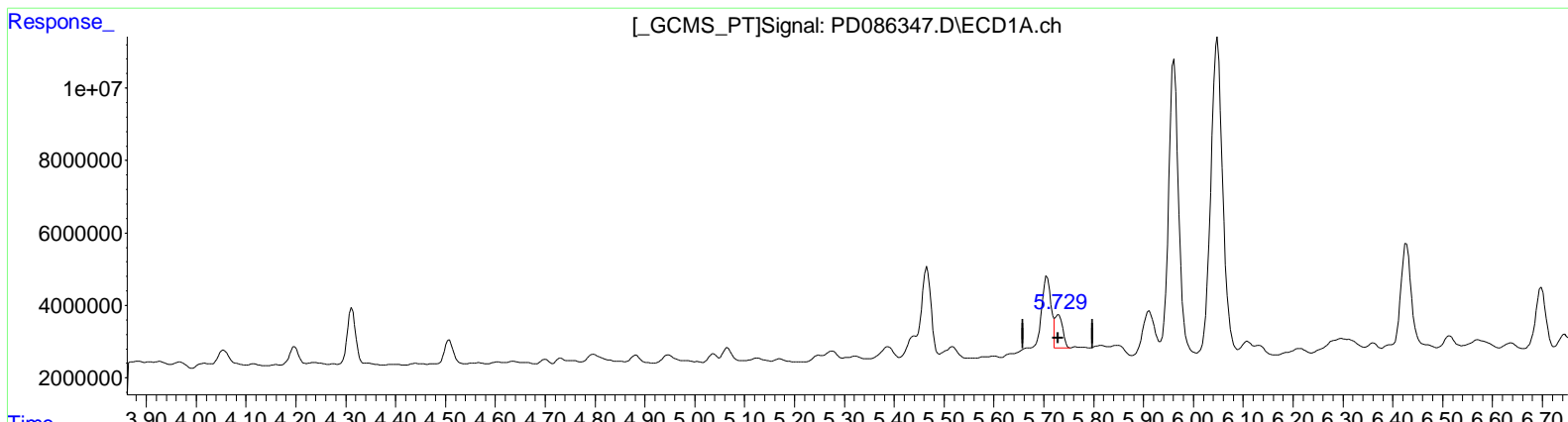
Instrument :
 ECD_D
ClientSampleId :
 CC0P9

Manual IntegrationsAPPROVED

Reviewed By :Abdul Mirza 11/06/2024
 Supervised By :Ankita Jodhani 11/06/2024

Integration File signal 1: autoint1.e
 Integration File signal 2: autoint2.e
 Quant Time: Nov 06 00:20:22 2024
 Quant Method : Z:\pestpcbsrv\HPCHEM1\ECD_D\Method\PD102524CLP.M
 Quant Title : GC Extractables
 QLast Update : Fri Oct 25 14:36:38 2024
 Response via : Initial Calibration
 Integrator: ChemStation

Volume Inj. : 1 µl
 Signal #1 Phase : ZB-MR1 Signal #2 Phase: ZB-MR2
 Signal #1 Info : 30M x 0.32mm x0.5 Signal #2 Info : 30M x 0.32mm x 0.25µm



(8) Heptachlor epoxide (B)
 5.729min 4.445 ng/ml m
 response 10157466

(8) Heptachlor epoxide #2 (B)
 4.888min 11.222 ng/ml
 response 140727185

Data Path : Z:\pestpcbsrv\HPCHEM1\ECD_D\Data\PD110524\
 Data File : PD086347.D
 Signal(s) : Signal #1: ECD1A.ch Signal #2: ECD2B.ch
 Acq On : 05 Nov 2024 11:46
 Operator : ARVAJ
 Sample : P4634-10
 Misc :
 ALS Vial : 16 Sample Multiplier: 1

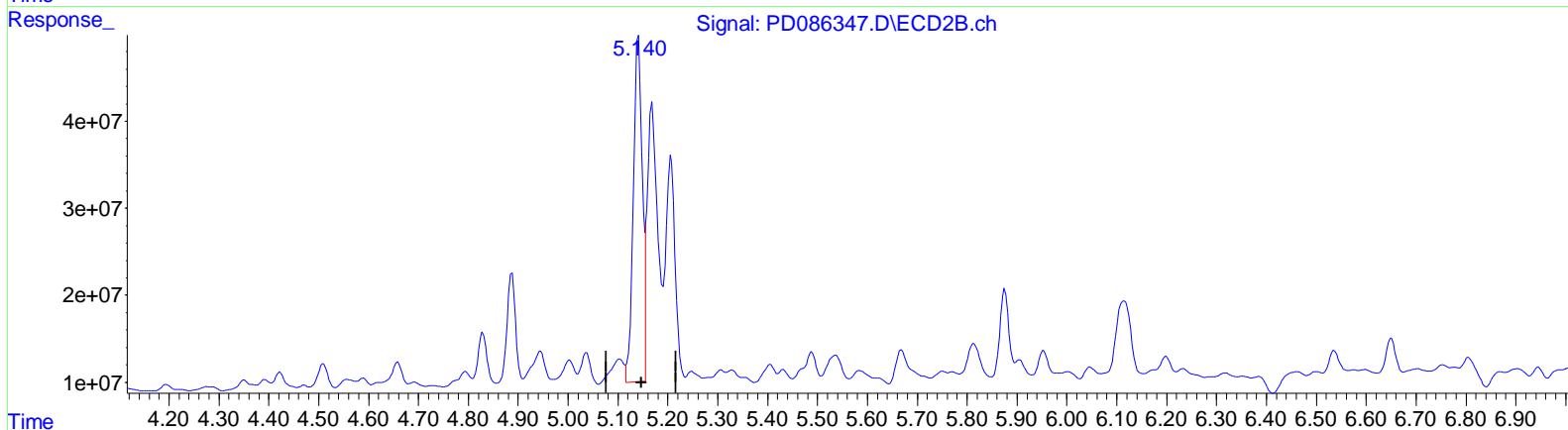
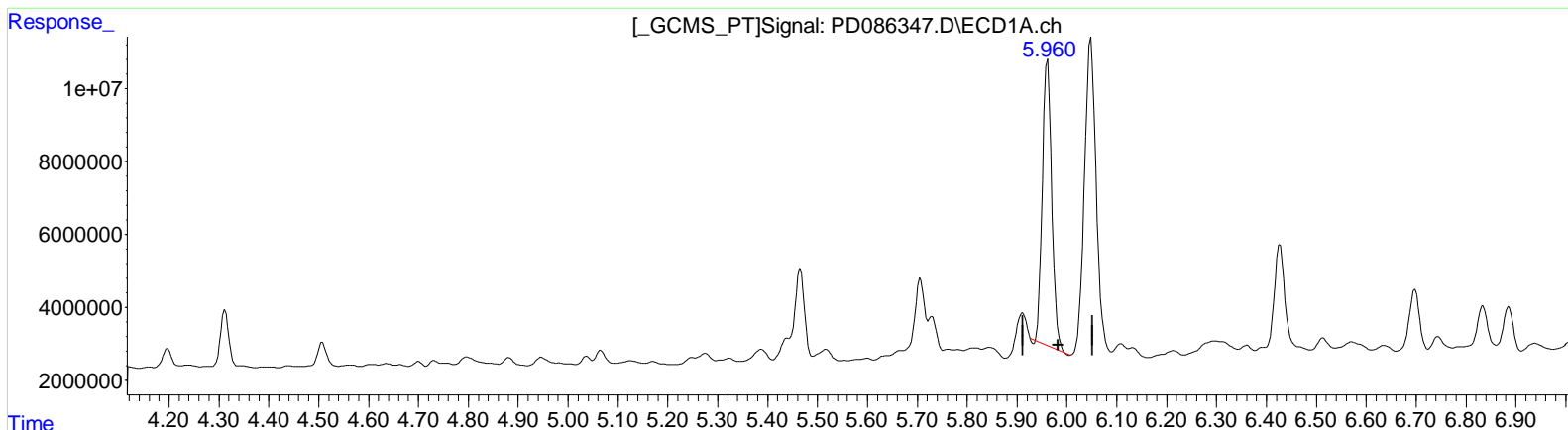
Instrument :
 ECD_D
ClientSampleId :
 CC0P9

Manual IntegrationsAPPROVED

Reviewed By :Abdul Mirza 11/06/2024
 Supervised By :Ankita Jodhani 11/06/2024

Integration File signal 1: autoint1.e
 Integration File signal 2: autoint2.e
 Quant Time: Nov 06 00:20:22 2024
 Quant Method : Z:\pestpcbsrv\HPCHEM1\ECD_D\Method\PD102524CLP.M
 Quant Title : GC Extractables
 QLast Update : Fri Oct 25 14:36:38 2024
 Response via : Initial Calibration
 Integrator: ChemStation

Volume Inj. : 1 µl
 Signal #1 Phase : ZB-MR1 Signal #2 Phase: ZB-MR2
 Signal #1 Info : 30M x 0.32mm x 0.5 Signal #2 Info : 30M x 0.32mm x 0.25µm



QEdit

(10) trans-Chlordane (B)
 5.961min 46.450 ng/ml
 response 102494427

(10) trans-Chlordane #2 (B)
 5.141min 37.641 ng/ml
 response 495157647

Data Path : Z:\pestpcbsrv\HPCHEM1\ECD_D\Data\PD110524\
 Data File : PD086347.D
 Signal(s) : Signal #1: ECD1A.ch Signal #2: ECD2B.ch
 Acq On : 05 Nov 2024 11:46
 Operator : ARVAJ
 Sample : P4634-10
 Misc :
 ALS Vial : 16 Sample Multiplier: 1

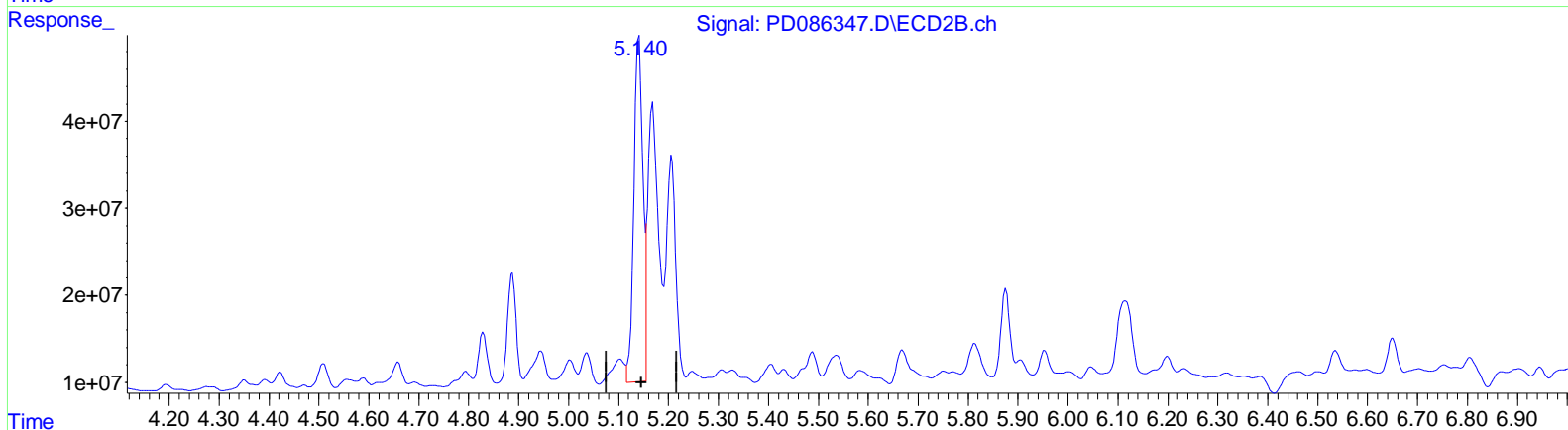
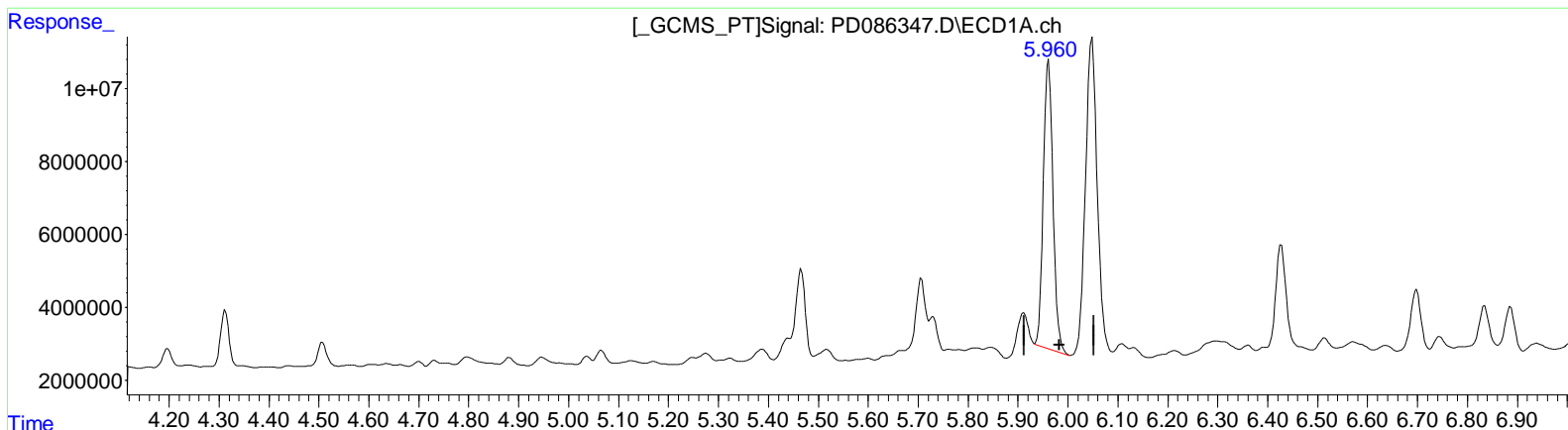
Instrument :
 ECD_D
ClientSampleId :
 CC0P9

Manual Integrations APPROVED

Reviewed By : Abdul Mirza 11/06/2024
 Supervised By : Ankita Jodhani 11/06/2024

Integration File signal 1: autoint1.e
 Integration File signal 2: autoint2.e
 Quant Time: Nov 06 00:20:22 2024
 Quant Method : Z:\pestpcbsrv\HPCHEM1\ECD_D\Method\PD102524CLP.M
 Quant Title : GC Extractables
 QLast Update : Fri Oct 25 14:36:38 2024
 Response via : Initial Calibration
 Integrator: ChemStation

Volume Inj. : 1 µl
 Signal #1 Phase : ZB-MR1 Signal #2 Phase: ZB-MR2
 Signal #1 Info : 30M x 0.32mm x 0.5 Signal #2 Info : 30M x 0.32mm x 0.25µm



QEdit

(10) trans-Chlordane (B)
 5.960min 47.864 ng/ml m
 response 105613654

(10) trans-Chlordane #2 (B)
 5.141min 37.641 ng/ml
 response 495157647

Data Path : Z:\pestpcbsrv\HPCHEM1\ECD_D\Data\PD110524\
 Data File : PD086347.D
 Signal(s) : Signal #1: ECD1A.ch Signal #2: ECD2B.ch
 Acq On : 05 Nov 2024 11:46
 Operator : ARVAJ
 Sample : P4634-10
 Misc :
 ALS Vial : 16 Sample Multiplier: 1

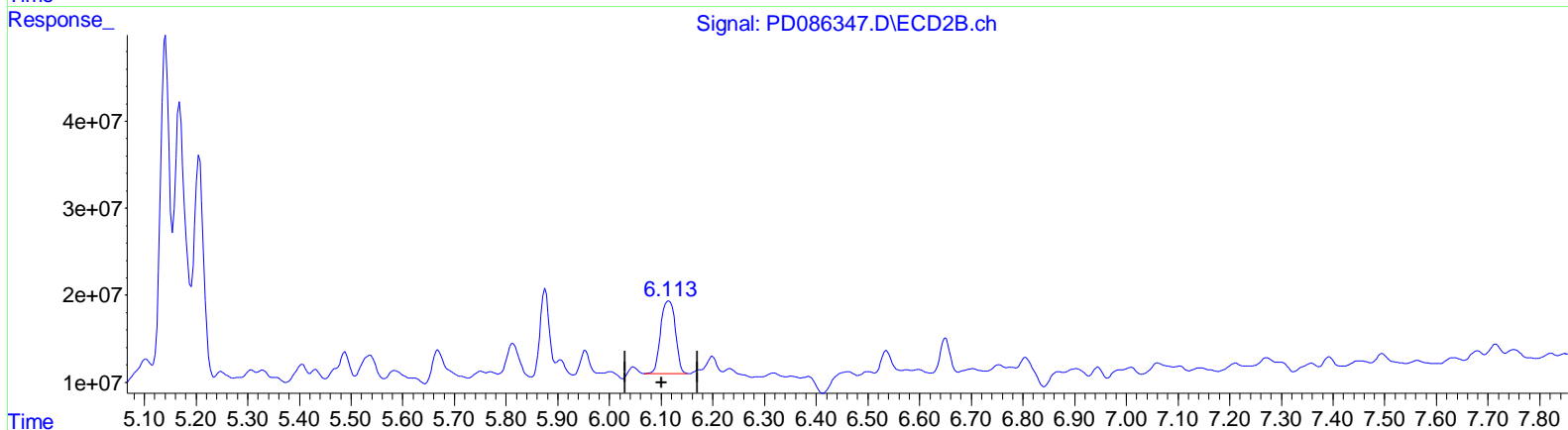
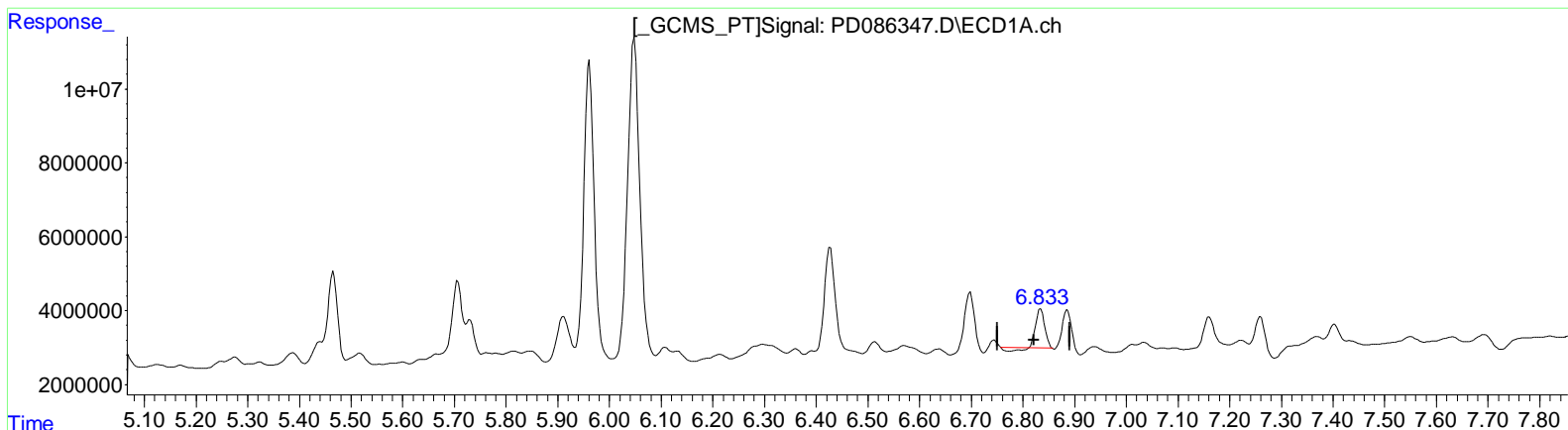
Instrument :
 ECD_D
ClientSampleId :
 CC0P9

Manual Integrations APPROVED

Reviewed By : Abdul Mirza 11/06/2024
 Supervised By : Ankita Jodhani 11/06/2024

Integration File signal 1: autoint1.e
 Integration File signal 2: autoint2.e
 Quant Time: Nov 06 00:20:22 2024
 Quant Method : Z:\pestpcbsrv\HPCHEM1\ECD_D\Method\PD102524CLP.M
 Quant Title : GC Extractables
 QLast Update : Fri Oct 25 14:36:38 2024
 Response via : Initial Calibration
 Integrator: ChemStation

Volume Inj. : 1 µl
 Signal #1 Phase : ZB-MR1 Signal #2 Phase: ZB-MR2
 Signal #1 Info : 30M x 0.32mm x 0.5 Signal #2 Info : 30M x 0.32mm x 0.25µm



QEdit

(15) Endosulfan II (B)
 6.834min 5.249 ng/ml
 response 10523250

(15) Endosulfan II #2 (B)
 6.115min 14.855 ng/ml
 response 163888309

Data Path : Z:\pestpcbsrv\HPCHEM1\ECD_D\Data\PD110524\
 Data File : PD086347.D
 Signal(s) : Signal #1: ECD1A.ch Signal #2: ECD2B.ch
 Acq On : 05 Nov 2024 11:46
 Operator : ARVAJ
 Sample : P4634-10
 Misc :
 ALS Vial : 16 Sample Multiplier: 1

Instrument :

ECD_D

ClientSampleId :

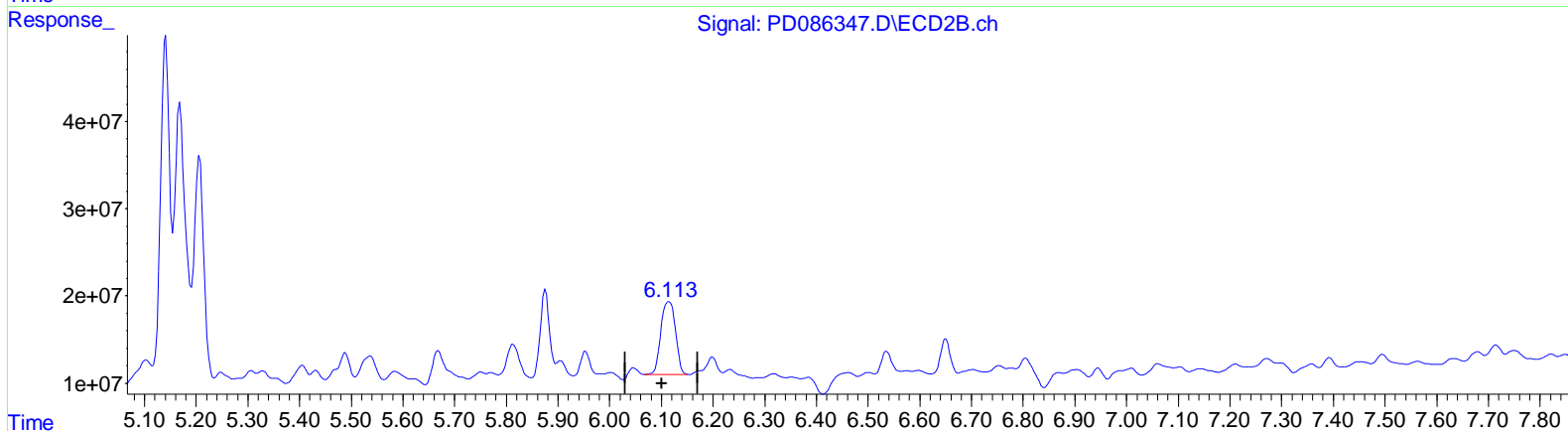
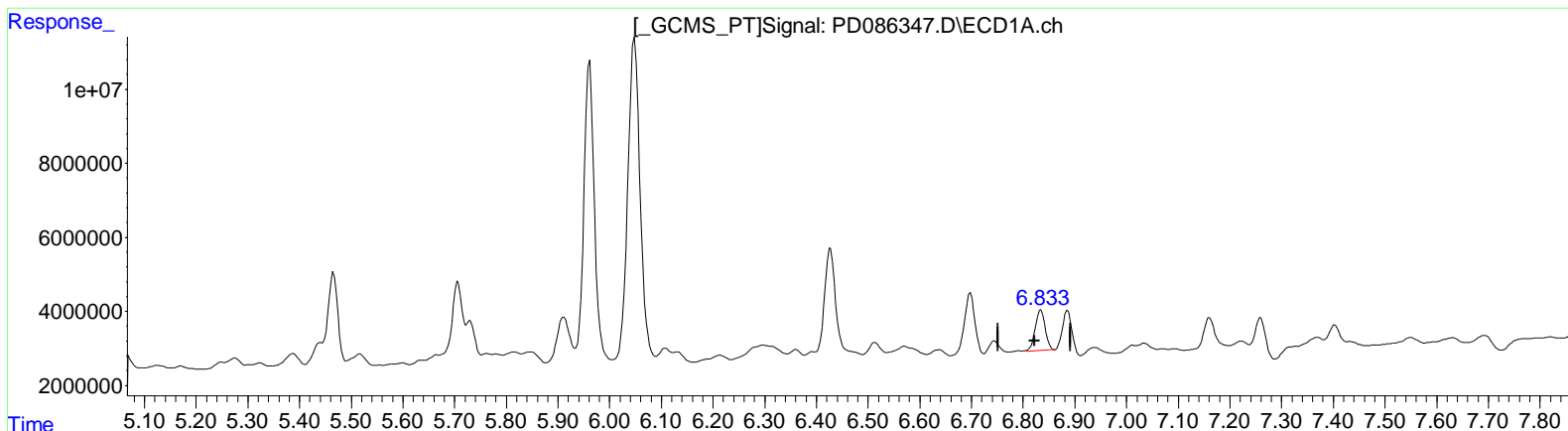
CC0P9

Manual IntegrationsAPPROVED

Reviewed By :Abdul Mirza 11/06/2024
 Supervised By :Ankita Jodhani 11/06/2024

Integration File signal 1: autoint1.e
 Integration File signal 2: autoint2.e
 Quant Time: Nov 06 00:20:22 2024
 Quant Method : Z:\pestpcbsrv\HPCHEM1\ECD_D\Method\PD102524CLP.M
 Quant Title : GC Extractables
 QLast Update : Fri Oct 25 14:36:38 2024
 Response via : Initial Calibration
 Integrator: ChemStation

Volume Inj. : 1 µl
 Signal #1 Phase : ZB-MR1 Signal #2 Phase: ZB-MR2
 Signal #1 Info : 30M x 0.32mm x0.5 Signal #2 Info : 30M x 0.32mm x 0.25µm



QEdit

(15) Endosulfan II (B)
 6.833min 7.209 ng/ml m
 response 14451480

(15) Endosulfan II #2 (B)
 6.115min 14.855 ng/ml
 response 163888309

Data Path : Z:\pestpcbsrv\HPCHEM1\ECD_D\Data\PD110524\
 Data File : PD086347.D
 Signal (s) : Signal #1: ECD1A.ch Signal #2: ECD2B.ch
 Acq On : 05 Nov 2024 11:46
 Operator : ARVAJ
 Sample : P4634-10
 Misc :
 ALS Vial : 16 Sample Multiplier: 1

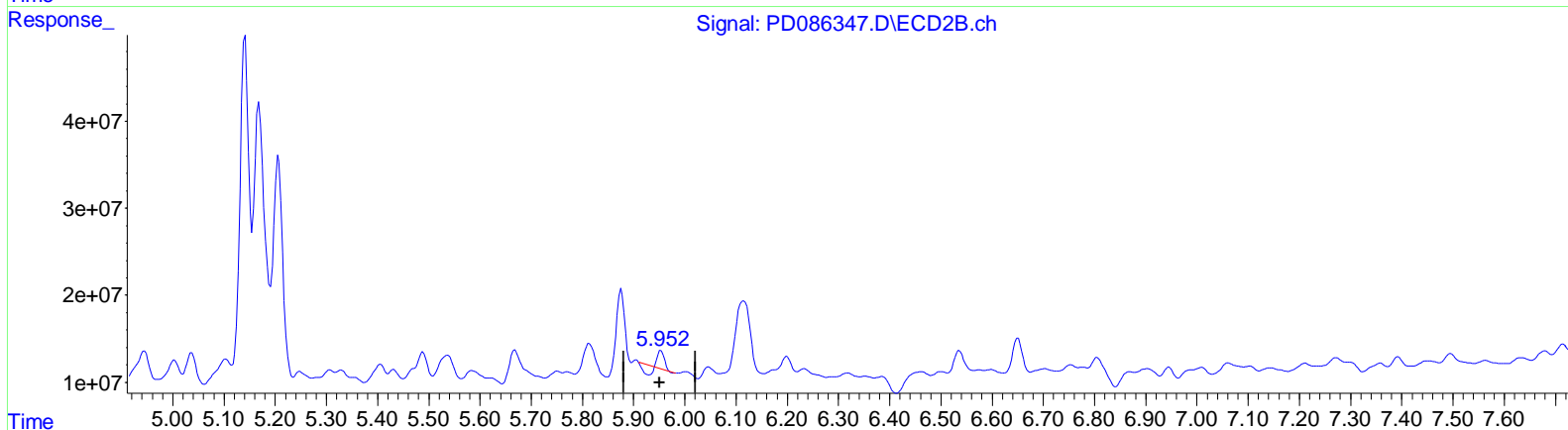
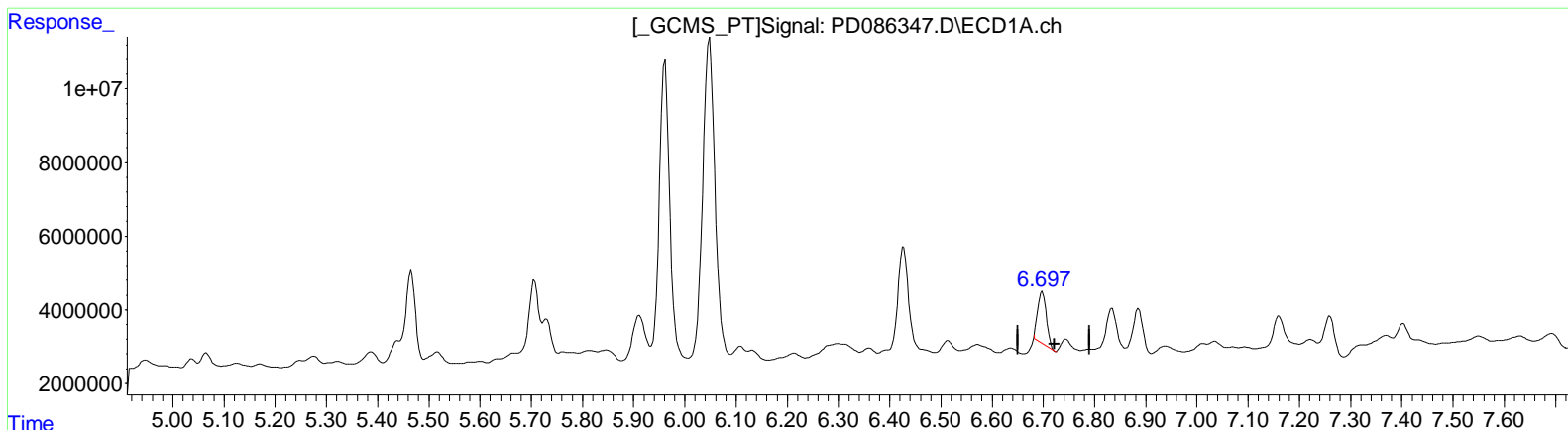
Instrument :
 ECD_D
ClientSampleId :
 CC0P9

Manual Integrations APPROVED

Reviewed By : Abdul Mirza 11/06/2024
 Supervised By : Ankita Jodhani 11/06/2024

Integration File signal 1: autoint1.e
 Integration File signal 2: autoint2.e
 Quant Time: Nov 06 00:20:22 2024
 Quant Method : Z:\pestpcbsrv\HPCHEM1\ECD_D\Method\PD102524CLP.M
 Quant Title : GC Extractables
 QLast Update : Fri Oct 25 14:36:38 2024
 Response via : Initial Calibration
 Integrator: ChemStation

Volume Inj. : 1 µl
 Signal #1 Phase : ZB-MR1 Signal #2 Phase: ZB-MR2
 Signal #1 Info : 30M x 0.32mm x 0.5 Signal #2 Info : 30M x 0.32mm x 0.25µm



(16) 4,4'-DDD (A)
 6.698min 10.251 ng/ml
 response 16611547

(16) 4,4'-DDD #2 (A)
 5.954min 0.553 ng/ml
 response 5427897

Data Path : Z:\pestpcbsrv\HPCHEM1\ECD_D\Data\PD110524\
 Data File : PD086347.D
 Signal(s) : Signal #1: ECD1A.ch Signal #2: ECD2B.ch
 Acq On : 05 Nov 2024 11:46
 Operator : ARVAJ
 Sample : P4634-10
 Misc :
 ALS Vial : 16 Sample Multiplier: 1

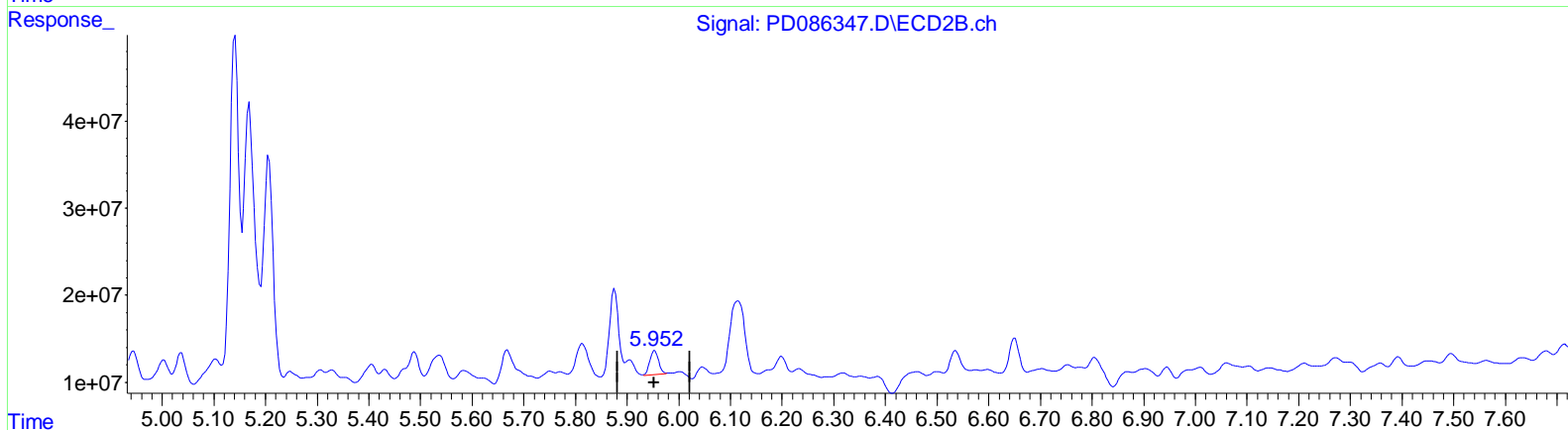
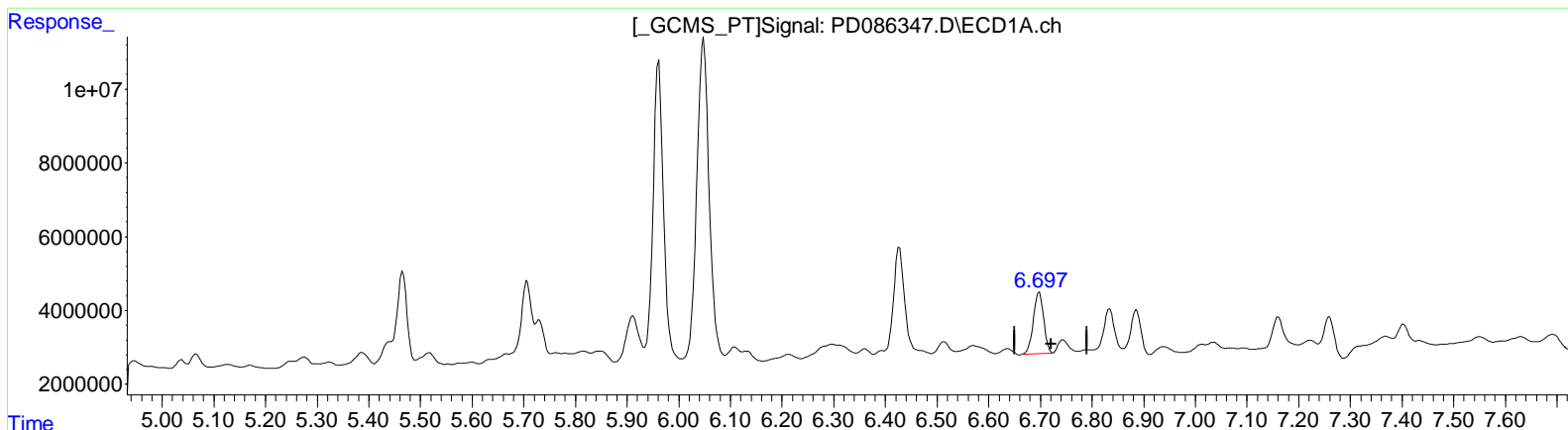
Instrument :
 ECD_D
ClientSampleId :
 CC0P9

Manual Integrations APPROVED

Reviewed By : Abdul Mirza 11/06/2024
 Supervised By : Ankita Jodhani 11/06/2024

Integration File signal 1: autoint1.e
 Integration File signal 2: autoint2.e
 Quant Time: Nov 06 00:20:22 2024
 Quant Method : Z:\pestpcbsrv\HPCHEM1\ECD_D\Method\PD102524CLP.M
 Quant Title : GC Extractables
 QLast Update : Fri Oct 25 14:36:38 2024
 Response via : Initial Calibration
 Integrator: ChemStation

Volume Inj. : 1 µl
 Signal #1 Phase : ZB-MR1 Signal #2 Phase: ZB-MR2
 Signal #1 Info : 30M x 0.32mm x 0.5 Signal #2 Info : 30M x 0.32mm x 0.25µm



(16) 4,4'-DDD (A)
 6.697min 14.287 ng/ml m
 response 23151195

(16) 4,4'-DDD #2 (A)
 5.952min 3.232 ng/ml m
 response 31721899

Data Path : Z:\pestpcbsrv\HPCHEM1\ECD_D\Data\PD110524\
 Data File : PD086347.D
 Signal(s) : Signal #1: ECD1A.ch Signal #2: ECD2B.ch
 Acq On : 05 Nov 2024 11:46
 Operator : ARVAJ
 Sample : P4634-10
 Misc :
 ALS Vial : 16 Sample Multiplier: 1

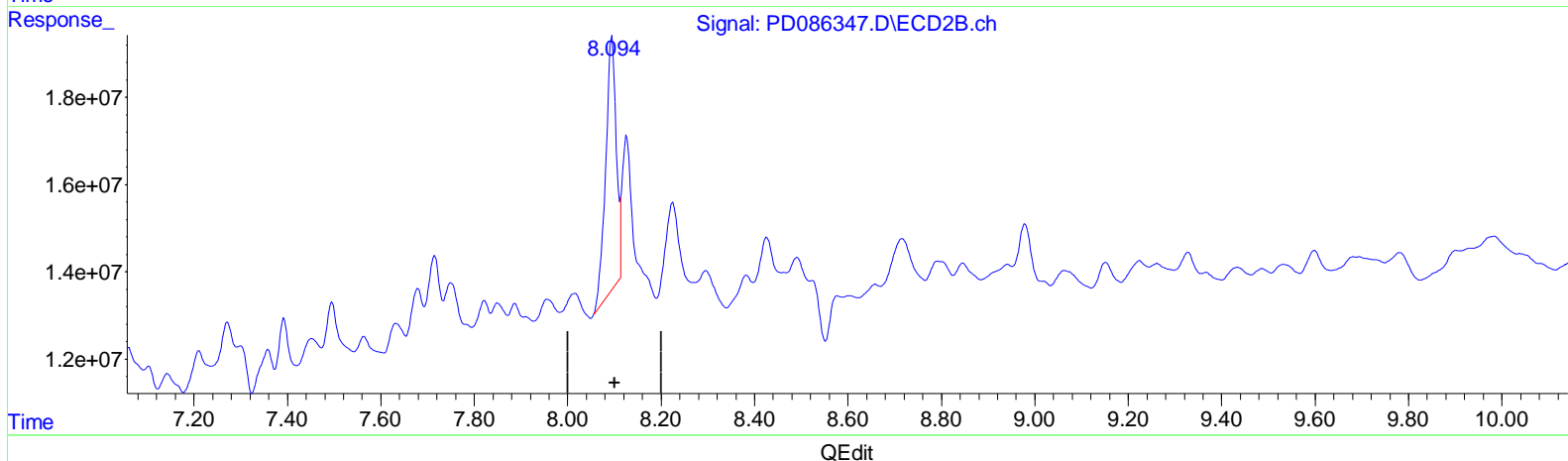
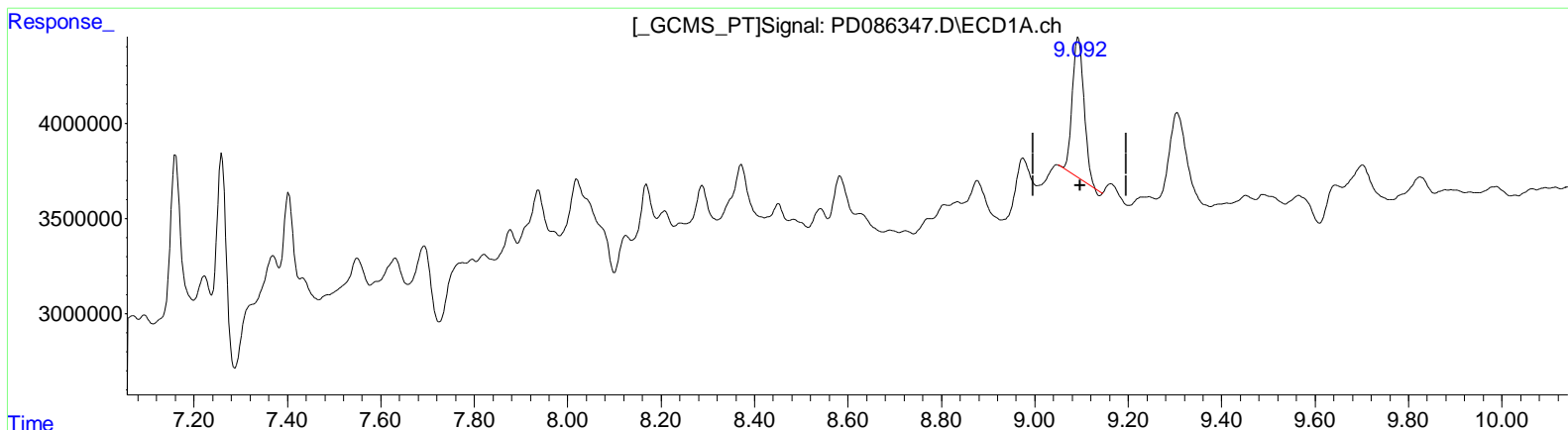
Instrument :
 ECD_D
ClientSampleId :
 CC0P9

Manual IntegrationsAPPROVED

Reviewed By :Abdul Mirza 11/06/2024
 Supervised By :Ankita Jodhani 11/06/2024

Integration File signal 1: autoint1.e
 Integration File signal 2: autoint2.e
 Quant Time: Nov 06 00:20:22 2024
 Quant Method : Z:\pestpcbsrv\HPCHEM1\ECD_D\Method\PD102524CLP.M
 Quant Title : GC Extractables
 QLast Update : Fri Oct 25 14:36:38 2024
 Response via : Initial Calibration
 Integrator: ChemStation

Volume Inj. : 1 µl
 Signal #1 Phase : ZB-MR2 Signal #2 Phase: ZB-MR2
 Signal #1 Info : 30M x 0.32mm x0.5 Signal #2 Info : 30M x 0.32mm x 0.25µm



(27) Decachlorobiphenyl (SA)
 9.093min 6.995 ng/ml
 response 12540203

(27) Decachlorobiphenyl #2 (SA)
 8.095min 9.542 ng/ml
 response 90229025

Data Path : Z:\pestpcbsrv\HPCHEM1\ECD_D\Data\PD110524\
 Data File : PD086347.D
 Signal(s) : Signal #1: ECD1A.ch Signal #2: ECD2B.ch
 Acq On : 05 Nov 2024 11:46
 Operator : ARVAJ
 Sample : P4634-10
 Misc :
 ALS Vial : 16 Sample Multiplier: 1

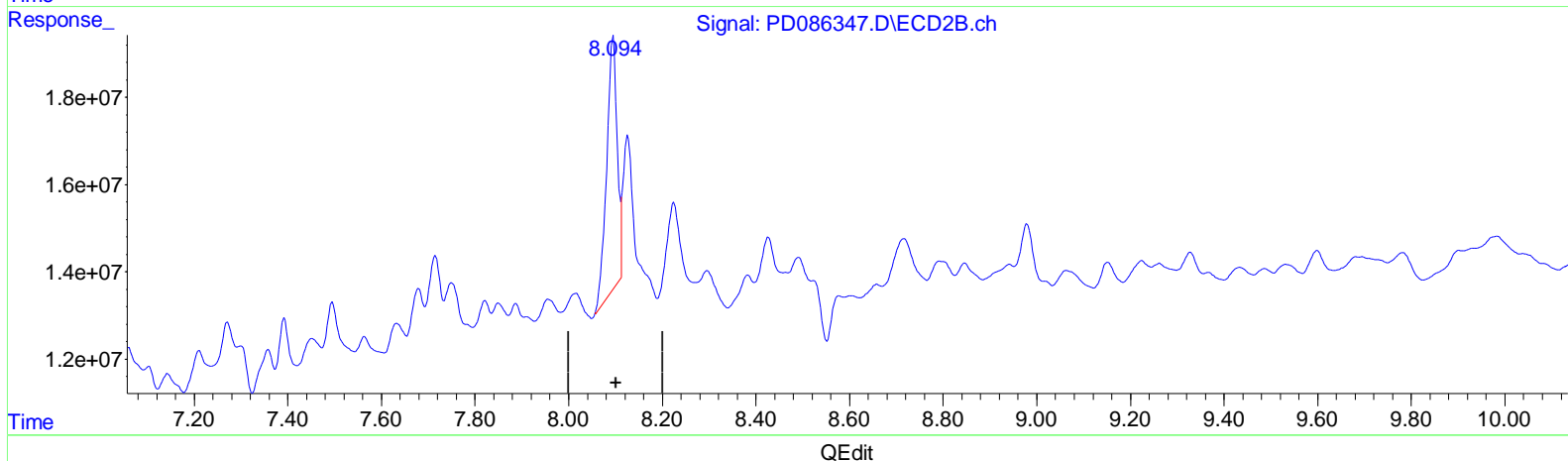
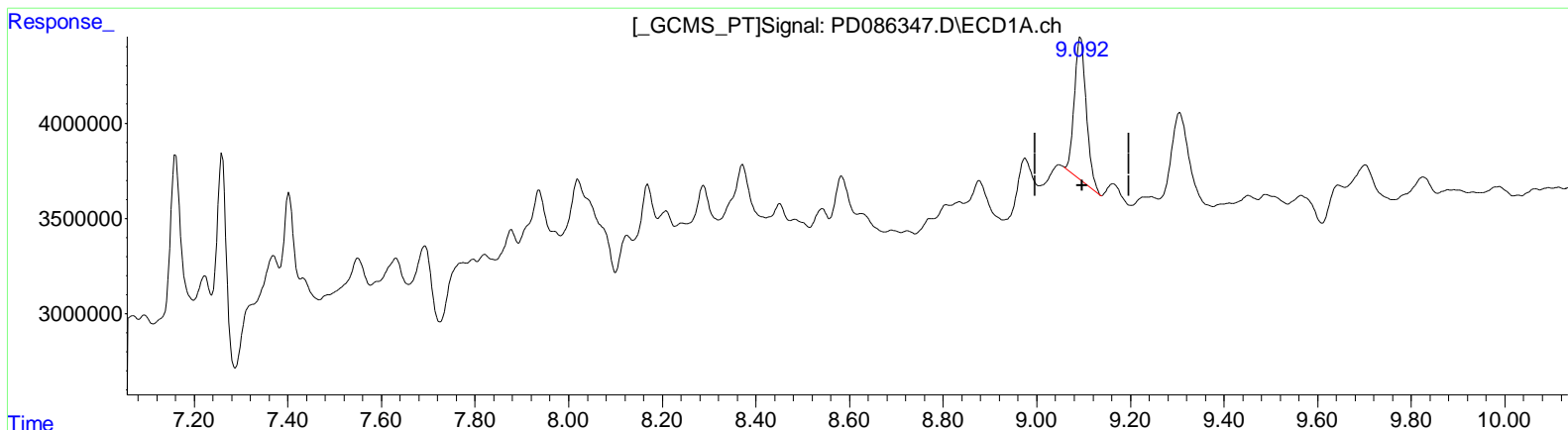
Instrument :
 ECD_D
ClientSampleId :
 CC0P9

Manual IntegrationsAPPROVED

Reviewed By :Abdul Mirza 11/06/2024
 Supervised By :Ankita Jodhani 11/06/2024

Integration File signal 1: autoint1.e
 Integration File signal 2: autoint2.e
 Quant Time: Nov 06 00:20:22 2024
 Quant Method : Z:\pestpcbsrv\HPCHEM1\ECD_D\Method\PD102524CLP.M
 Quant Title : GC Extractables
 QLast Update : Fri Oct 25 14:36:38 2024
 Response via : Initial Calibration
 Integrator: ChemStation

Volume Inj. : 1 µl
 Signal #1 Phase : ZB-MR2 Signal #2 Phase: ZB-MR2
 Signal #1 Info : 30M x 0.32mm x0.5 Signal #2 Info : 30M x 0.32mm x 0.25µm



(27) Decachlorobiphenyl (SA)
 9.092min 7.389 ng/ml m
 response 13246850

(27) Decachlorobiphenyl #2 (SA)
 8.095min 9.542 ng/ml
 response 90229025