

Data Path : Z:\pestpcbsrv\HPCHEM1\ECD_D\Data\PD110723\
 Data File : PD079467.D
 Signal(s) : Signal #1: ECD1A.ch Signal #2: ECD2B.ch
 Acq On : 04 Nov 2023 15:23
 Operator : AR\AJ
 Sample : INDB320
 Misc :
 ALS Vial : 21 Sample Multiplier: 1

Instrument :
 ECD_D
ClientSampleId :
 INDB3179

Manual Integrations
APPROVED

Reviewed By :Abdul Mirza 11/06/2023
 Supervised By :Ankita Jodhani 11/06/2023

Integration File signal 1: autoint1.e
 Integration File signal 2: autoint2.e
 Quant Time: Nov 05 05:08:50 2023
 Quant Method : Z:\pestpcbsrv\HPCHEM1\ECD_D\Method\PD110623CLP.M
 Quant Title : GC Extractables
 QLast Update : Sat Nov 04 07:14:58 2023
 Response via : Initial Calibration
 Integrator: ChemStation

Volume Inj. : 1 µl
 Signal #1 Phase : ZB-MR2 Signal #2 Phase: ZB-MR2
 Signal #1 Info : 30M x 0.32mm x0.5 Signal #2 Info : 30M x 0.32mm x 0.25µm

Compound	RT#1	RT#2	Resp#1	Resp#2	ng/ml	ng/ml

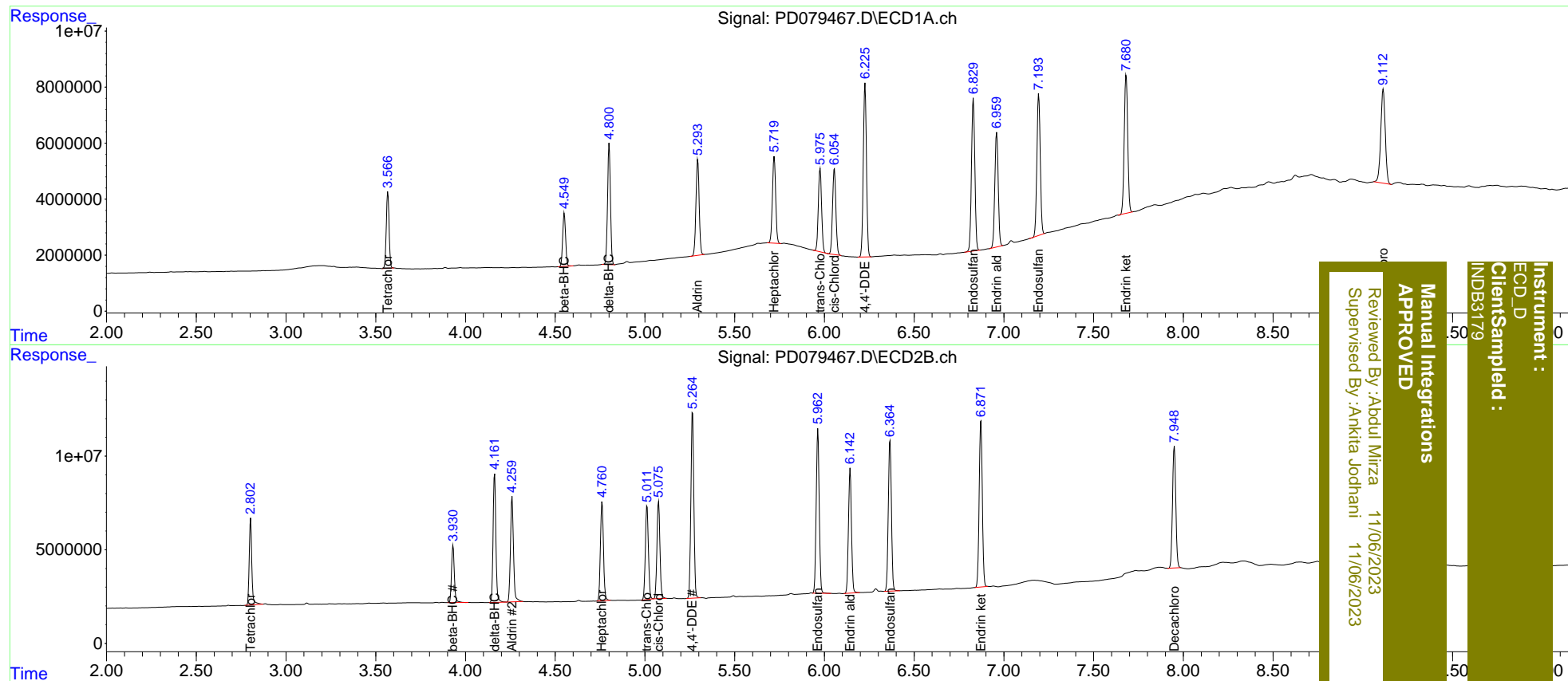
System Monitoring Compounds						
1) SA Tetrachlo...	3.568	2.803	29535542	46773409	20.225	20.449
27) SA Decachlor...	9.114	7.950	58716195	82355994	33.088	34.495
Target Compounds						
5) MB Aldrin	5.295	4.260	42628254	65897202	18.178	20.252
6) B beta-BHC	4.551	3.931	21466709	32981773	19.770	20.139
7) B delta-BHC	4.801	4.163	48610670	73332857	19.507	20.525
8) B Heptachlo...	5.721	4.761	38835581	62248156	17.518	20.125
10) B trans-Chl...	5.976	5.012	37692631	59223559	17.715	19.949
11) B cis-Chlor...	6.054	5.075	39608209	60326116	18.186m	19.873m
12) B 4,4'-DDE	6.227	5.265	76458787	114.1E6	38.728	40.743
15) B Endosulfa...	6.830	5.964	70911109	103.1E6	37.273	39.715
18) B Endrin al...	6.960	6.144	53829216	77986227	36.115	38.538
19) B Endosulfa...	7.194	6.366	65546499	97239202	35.202	39.134
21) B Endrin ke...	7.682	6.872	66746349	108.5E6	34.163	38.161

(f)=RT Delta > 1/2 Window (#)=Amounts differ by > 25% (m)=manual int.

Data Path : Z:\pestpcbsrv\HPCHEM1\ECD_D\Data\PD110723\
 Data File : PD079467.D
 Signal(s) : Signal #1: ECD1A.ch Signal #2: ECD2B.ch
 Acq On : 04 Nov 2023 15:23
 Operator : AR\AJ
 Sample : INDB320
 Misc :
 ALS Vial : 21 Sample Multiplier: 1

Integration File signal 1: autoint1.e
 Integration File signal 2: autoint2.e
 Quant Time: Nov 05 05:08:50 2023
 Quant Method : Z:\pestpcbsrv\HPCHEM1\ECD_D\Method\PD110623CLP.M
 Quant Title : GC Extractables
 QLast Update : Sat Nov 04 07:14:58 2023
 Response via : Initial Calibration
 Integrator: ChemStation

Volume Inj. : 1 µl
 Signal #1 Phase : ZB-MR1 Signal #2 Phase: ZB-MR2
 Signal #1 Info : 30M x 0.32mm x0.5 Signal #2 Info : 30M x 0.32mm x 0.25µm



Instrument : ECD_D
 Client Sampled : INDB3179

Manual Integrations
 APPROVED

Reviewed By: Aboul Mirza 11/06/2023
 Supervised By: Ankita Jodhani 11/06/2023