

Data Path : Z:\pestpcbsrv\HPCHEM1\ECD_D\Data\PD110724\
 Data File : PD086420.D
 Signal(s) : Signal #1: ECD1A.ch Signal #2: ECD2B.ch
 Acq On : 07 Nov 2024 13:21
 Operator : AR\AJ
 Sample : P4634-15RX
 Misc :
 ALS Vial : 7 Sample Multiplier: 1

Instrument :
 ECD_D
 ClientSampleId :

Integration File signal 1: autoint1.e
 Integration File signal 2: autoint2.e
 Quant Time: Nov 08 00:55:42 2024
 Quant Method : Z:\pestpcbsrv\HPCHEM1\ECD_D\Method\PD102524CLP.M
 Quant Title : GC Extractables
 QLast Update : Fri Oct 25 14:36:38 2024
 Response via : Initial Calibration
 Integrator: ChemStation

Volume Inj. : 1 µl
 Signal #1 Phase : ZB-MR1 Signal #2 Phase: ZB-MR2
 Signal #1 Info : 30M x 0.32mm x0.5 Signal #2 Info : 30M x 0.32mm x 0.25µm

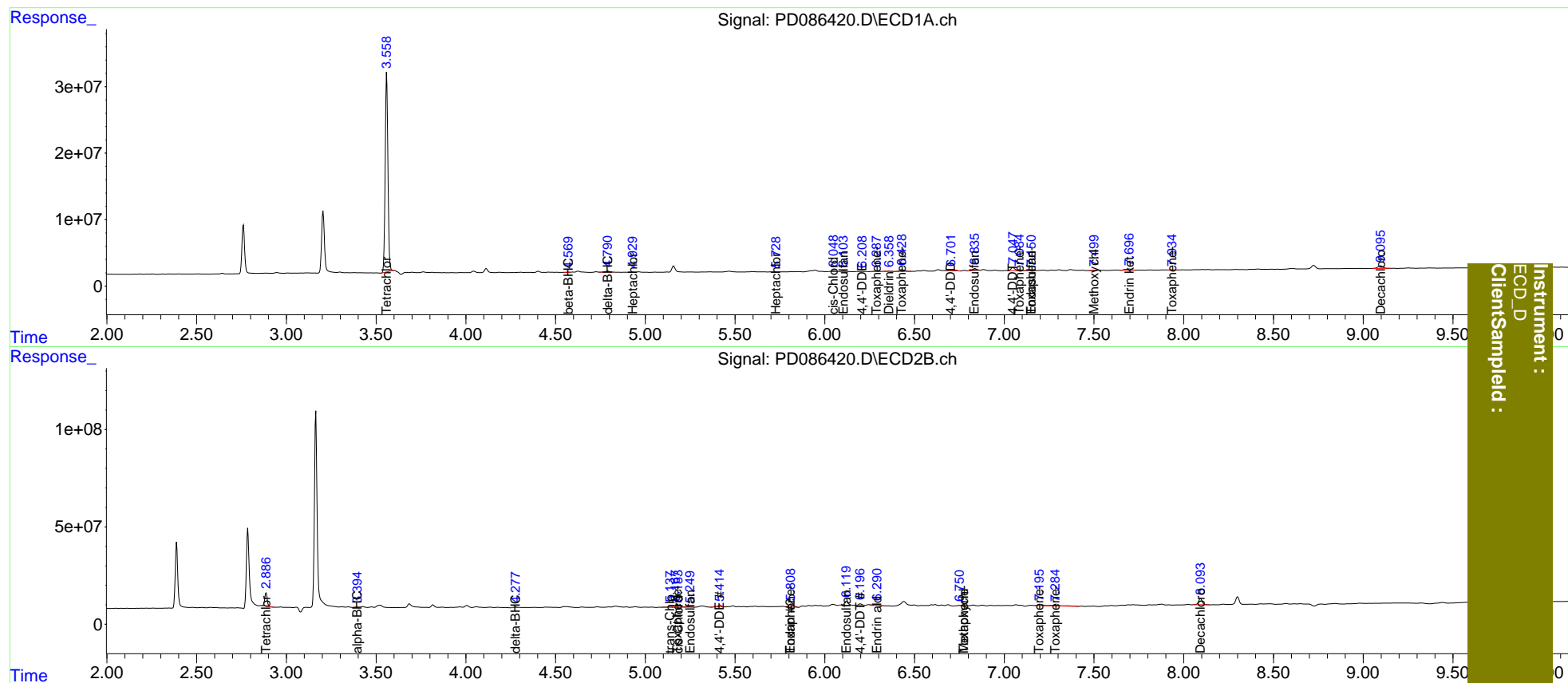
Compound	RT#1	RT#2	Resp#1	Resp#2	ng/ml	ng/ml
System Monitoring Compounds						
1) SA Tetrachlo...	3.559	2.887	318.5E6	61428107	241.893	6.622 #
27) SA Decachlor...	9.097	8.094	7192297	45109577	4.012	4.771
Target Compounds						
5) MB Aldrin	5.317	4.384	-165672	1039179	N.D.	<MDL
7) B delta-BHC	4.791	4.279	2546915	4350761	0.984	0.310 #
8) B Heptachlo...	5.730	4.895	325358	715188	0.142	<MDL #
9) A Endosulfan I	6.104	5.250	747217	5990235	0.369	0.522 #
10) B trans-Chl...	5.982	5.138	25799	9764523	<MDL	0.742 #
11) B cis-Chlor...	6.049	5.184	1685217	17415831	0.762	1.371 #
12) B 4,4'-DDE	6.209	5.415	610789	13763647	0.286	1.123 #
13) MA Dieldrin	6.359	5.523	397135	-221652	0.174	N.D. #
14) MA Endrin	6.522f	5.810	157565	27937210	<MDL	2.486 #
15) B Endosulfa...	6.836	6.121	3744341	29218507	1.868	2.648 #
16) A 4,4'-DDD	6.703	5.949	3159720	664689	1.950	<MDL #
17) MA 4,4'-DDT	7.049	6.198	7658761	10225892	4.594	0.996 #
19) B Endosulfa...	7.151	6.497	1115037	-1960070	0.605	N.D. #
20) A Methoxychlor	7.501	6.774	500847	2108840	0.532	0.444
21) B Endrin ke...	7.697	7.017	4734348	98453	2.297	<MDL #
22) Toxaphene-1	6.288	5.168	705939	9171072	50.913	139.724 #
23) Toxaphene-2	6.429	5.810f	5111930	27937210	257.375	398.733 #
24) Toxaphene-3	7.086	6.774	2362811	2108840	44.176	9.177 #
25) Toxaphene-4	7.151	7.197	1115037	13423505	28.070	82.709 #
26) Toxaphene-5	7.935	7.285f	563969	18513180	19.871	158.298 #

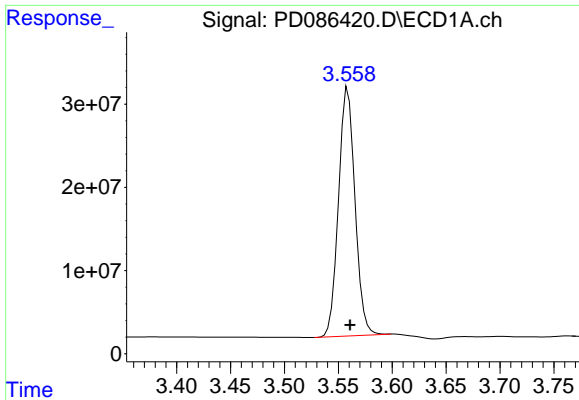
(f)=RT Delta > 1/2 Window (#)=Amounts differ by > 25% (m)=manual int.

Data Path : Z:\pestpcbsrv\HPCHEM1\ECD_D\Data\PD110724\
 Data File : PD086420.D
 Signal(s) : Signal #1: ECD1A.ch Signal #2: ECD2B.ch
 Acq On : 07 Nov 2024 13:21
 Operator : AR\AJ
 Sample : P4634-15RX
 Misc :
 ALS Vial : 7 Sample Multiplier: 1

Integration File signal 1: autoint1.e
 Integration File signal 2: autoint2.e
 Quant Time: Nov 08 00:55:42 2024
 Quant Method : Z:\pestpcbsrv\HPCHEM1\ECD_D\Method\PD102524CLP.M
 Quant Title : GC Extractables
 QLast Update : Fri Oct 25 14:36:38 2024
 Response via : Initial Calibration
 Integrator: ChemStation

Volume Inj. : 1 µl
 Signal #1 Phase : ZB-MR1 Signal #2 Phase: ZB-MR2
 Signal #1 Info : 30M x 0.32mm x0.5 Signal #2 Info : 30M x 0.32mm x 0.25µm

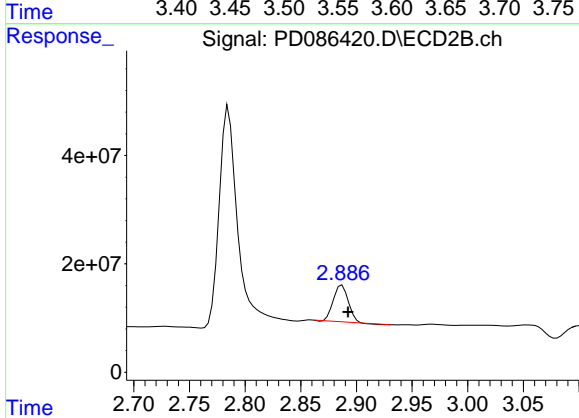




#1 Tetrachloro-m-xylene

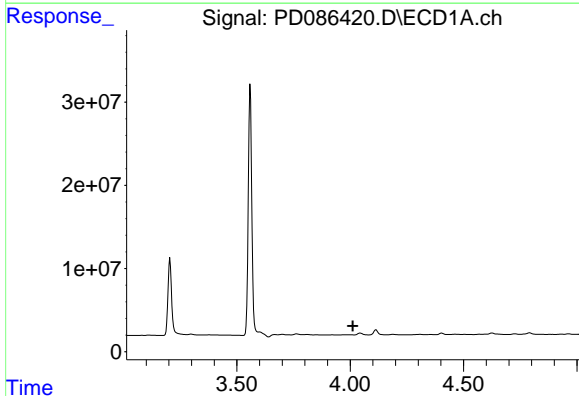
R.T.: 3.559 min
 Delta R.T.: -0.002 min
 Response: 318472621
 Conc: 241.89 ng/ml

Instrument :
 ECD_D
 ClientSampleId :



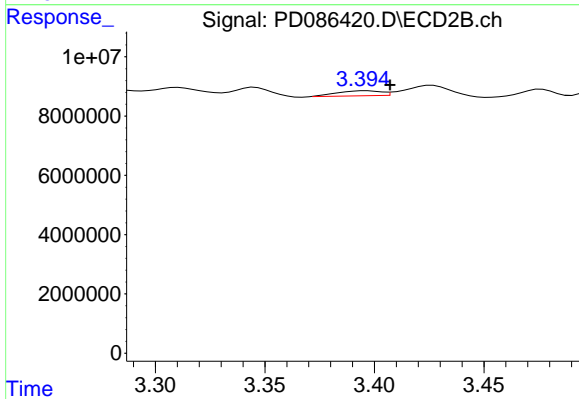
#1 Tetrachloro-m-xylene

R.T.: 2.887 min
 Delta R.T.: -0.005 min
 Response: 61428107
 Conc: 6.62 ng/ml



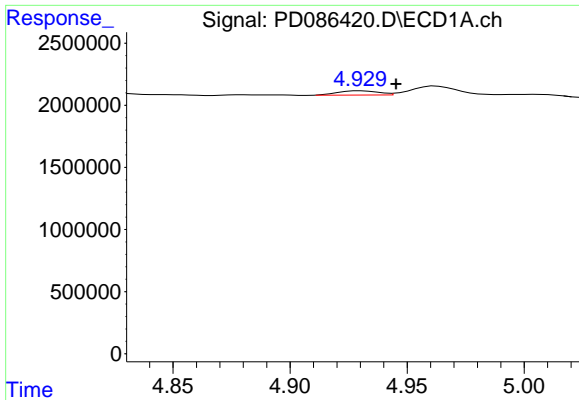
#2 alpha-BHC

R.T.: 4.044 min
 Delta R.T.: 0.032 min
 Response: -570632
 Conc: N.D.



#2 alpha-BHC

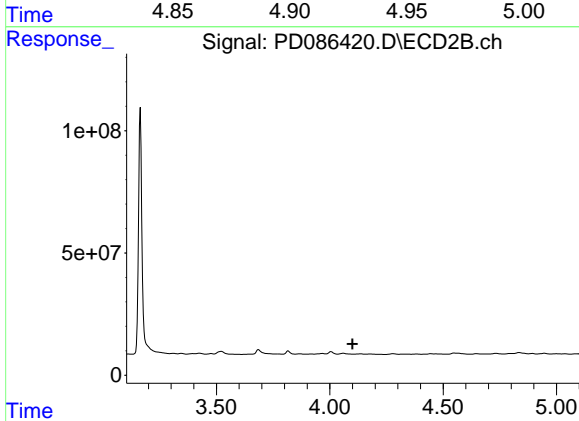
R.T.: 3.396 min
 Delta R.T.: -0.011 min
 Response: 2359528
 Conc: 0.16 ng/ml



#4 Heptachlor

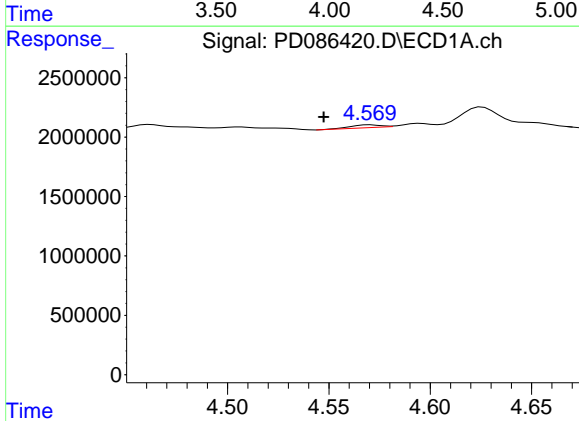
R.T.: 4.930 min
 Delta R.T.: -0.015 min
 Response: 411788
 Conc: 0.17 ng/ml

Instrument :
 ECD_D
 ClientSampleId :



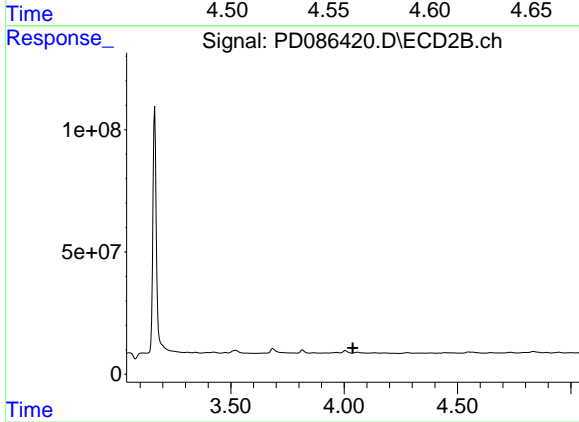
#4 Heptachlor

R.T.: 4.060 min
 Delta R.T.: -0.041 min
 Response: -6858160
 Conc: N.D.



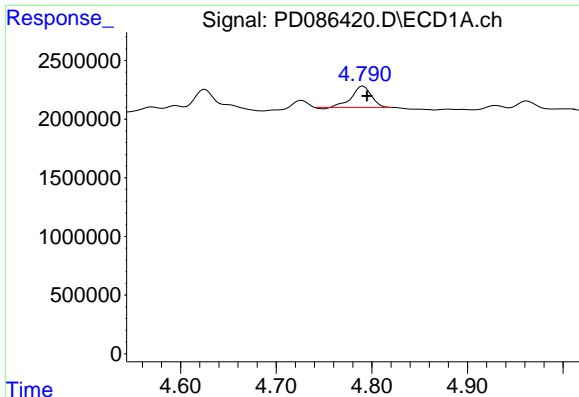
#6 beta-BHC

R.T.: 4.570 min
 Delta R.T.: 0.023 min
 Response: 245953
 Conc: 0.22 ng/ml



#6 beta-BHC

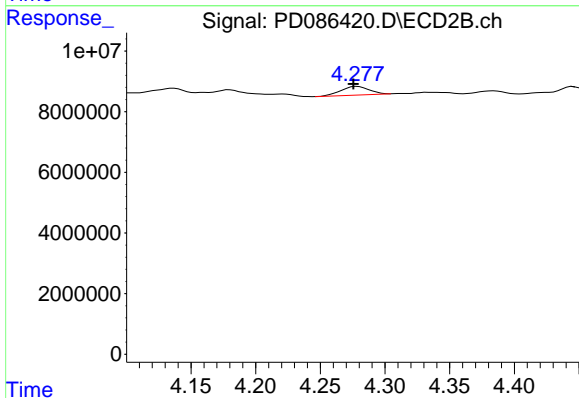
R.T.: 4.060 min
 Delta R.T.: 0.022 min
 Response: -6858160
 Conc: N.D.



#7 delta-BHC

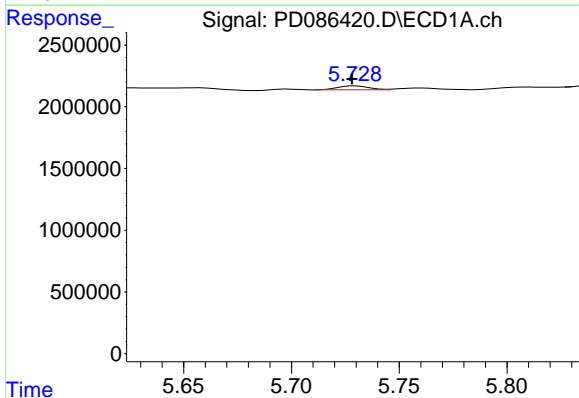
R.T.: 4.791 min
 Delta R.T.: -0.004 min
 Response: 2546915
 Conc: 0.98 ng/ml

Instrument :
 ECD_D
 ClientSampleId :



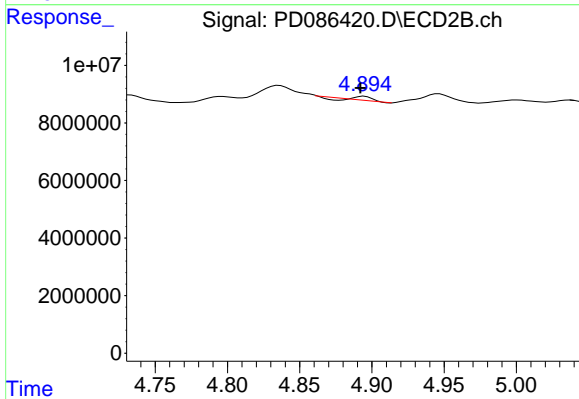
#7 delta-BHC

R.T.: 4.279 min
 Delta R.T.: 0.003 min
 Response: 4350761
 Conc: 0.31 ng/ml



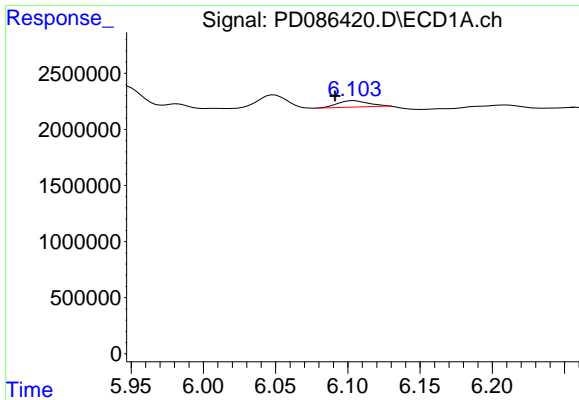
#8 Heptachlor epoxide

R.T.: 5.730 min
 Delta R.T.: 0.002 min
 Response: 325358
 Conc: 0.14 ng/ml



#8 Heptachlor epoxide

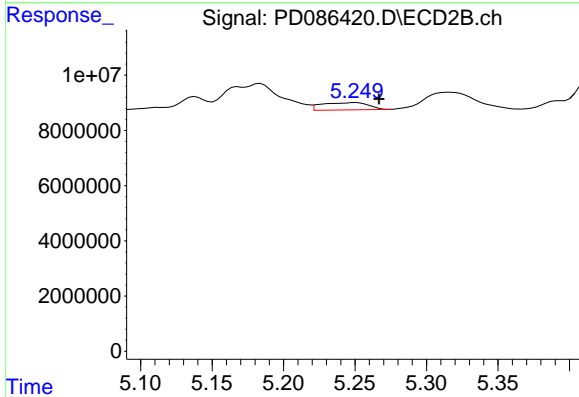
R.T.: 4.895 min
 Delta R.T.: 0.003 min
 Response: 715188
 Conc: N.D.



#9 Endosulfan I

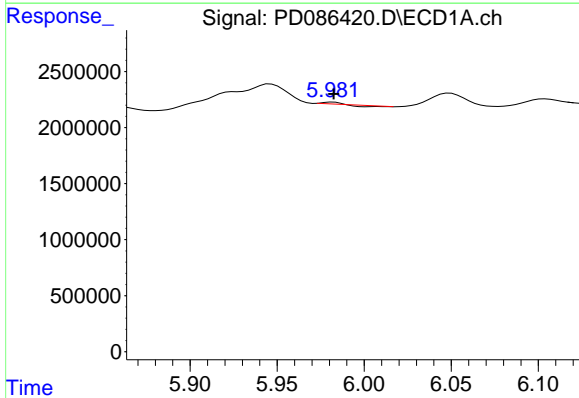
R.T.: 6.104 min
 Delta R.T.: 0.013 min
 Response: 747217
 Conc: 0.37 ng/ml

Instrument :
 ECD_D
 ClientSampleId :



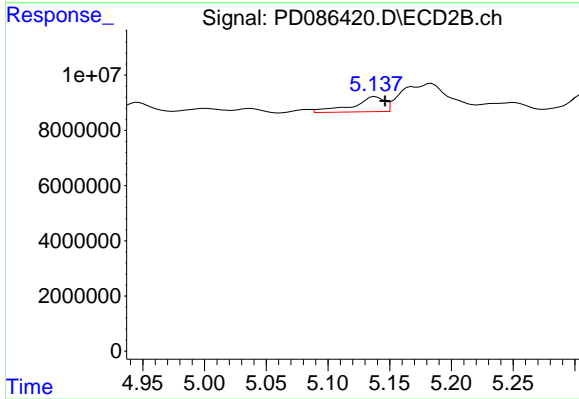
#9 Endosulfan I

R.T.: 5.250 min
 Delta R.T.: -0.017 min
 Response: 5990235
 Conc: 0.52 ng/ml



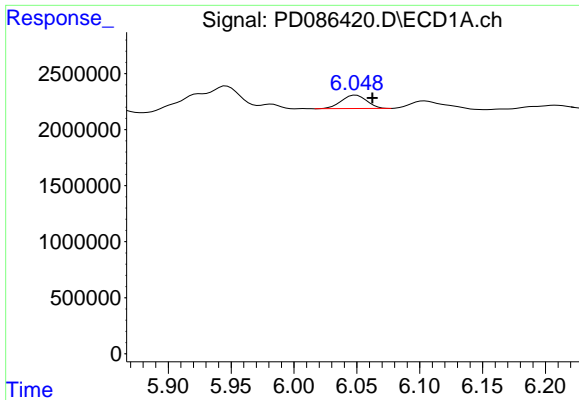
#10 trans-Chlordane

R.T.: 5.982 min
 Delta R.T.: 0.000 min
 Response: 25799
 Conc: N.D.



#10 trans-Chlordane

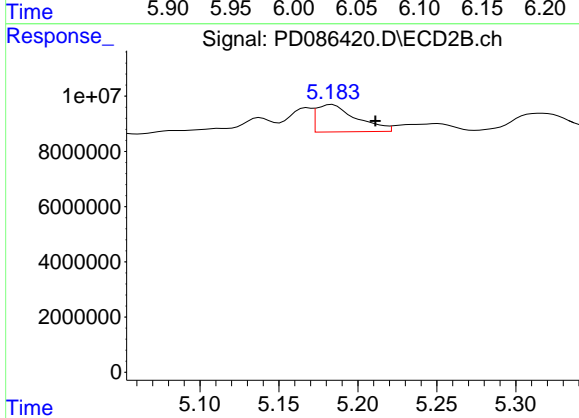
R.T.: 5.138 min
 Delta R.T.: -0.008 min
 Response: 9764523
 Conc: 0.74 ng/ml



#11 cis-Chlordane

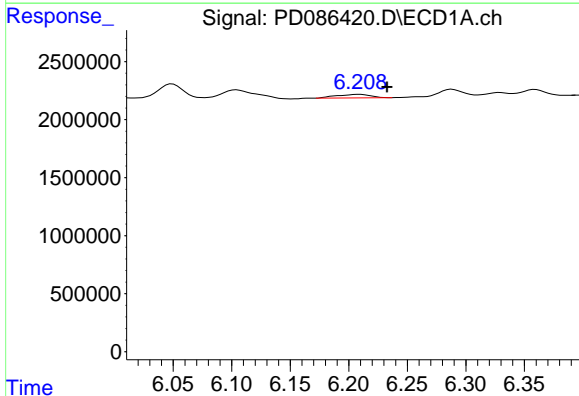
R.T.: 6.049 min
 Delta R.T.: -0.013 min
 Response: 1685217
 Conc: 0.76 ng/ml

Instrument :
 ECD_D
 ClientSampleId :



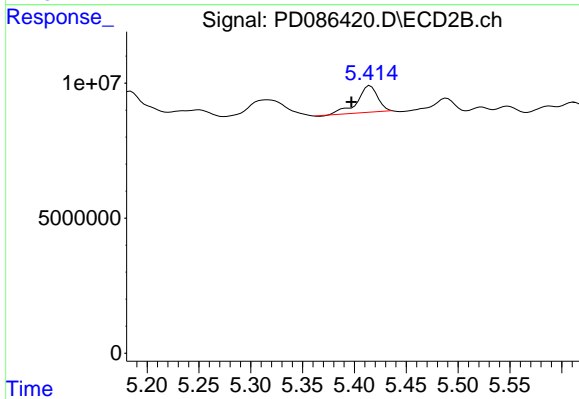
#11 cis-Chlordane

R.T.: 5.184 min
 Delta R.T.: -0.027 min
 Response: 17415831
 Conc: 1.37 ng/ml



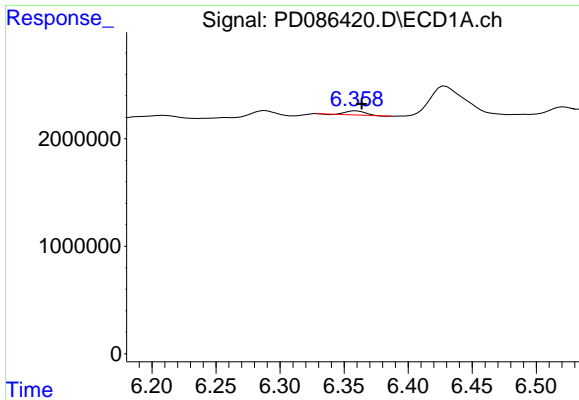
#12 4,4'-DDE

R.T.: 6.209 min
 Delta R.T.: -0.024 min
 Response: 610789
 Conc: 0.29 ng/ml



#12 4,4'-DDE

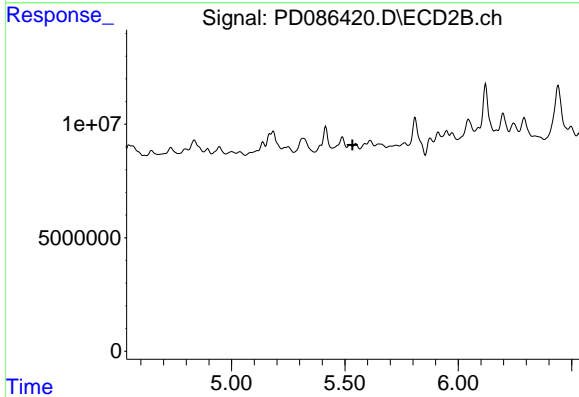
R.T.: 5.415 min
 Delta R.T.: 0.018 min
 Response: 13763647
 Conc: 1.12 ng/ml



#13 Dieldrin

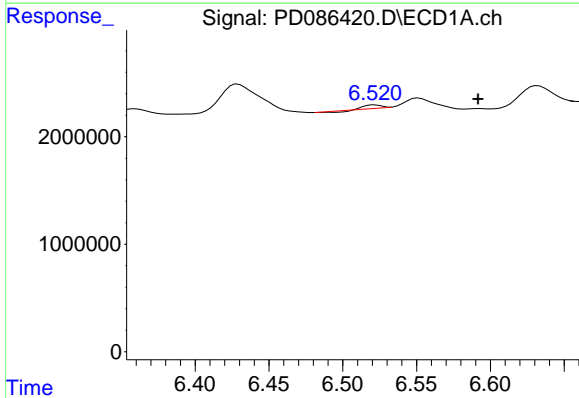
R.T.: 6.359 min
 Delta R.T.: -0.005 min
 Response: 397135
 Conc: 0.17 ng/ml

Instrument :
 ECD_D
 ClientSampleId :



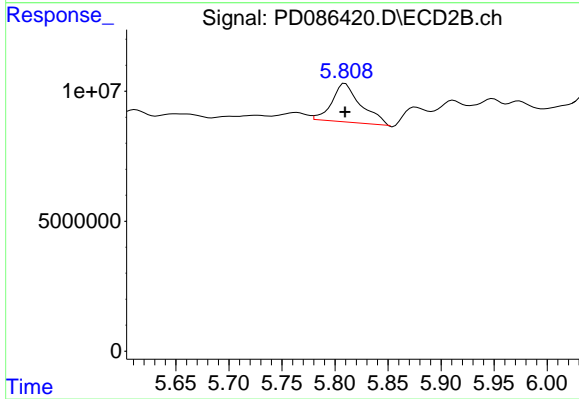
#13 Dieldrin

R.T.: 5.523 min
 Delta R.T.: -0.011 min
 Response: -221652
 Conc: N.D.



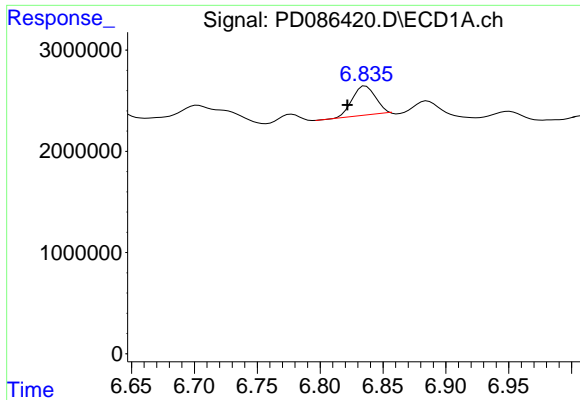
#14 Endrin

R.T.: 6.522 min
 Delta R.T.: -0.070 min
 Response: 157565
 Conc: N.D.



#14 Endrin

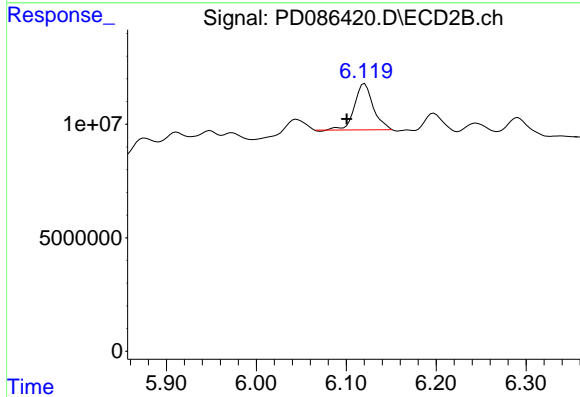
R.T.: 5.810 min
 Delta R.T.: 0.000 min
 Response: 27937210
 Conc: 2.49 ng/ml



#15 Endosulfan II

R.T.: 6.836 min
 Delta R.T.: 0.014 min
 Response: 3744341
 Conc: 1.87 ng/ml

Instrument :
 ECD_D
 ClientSampleId :



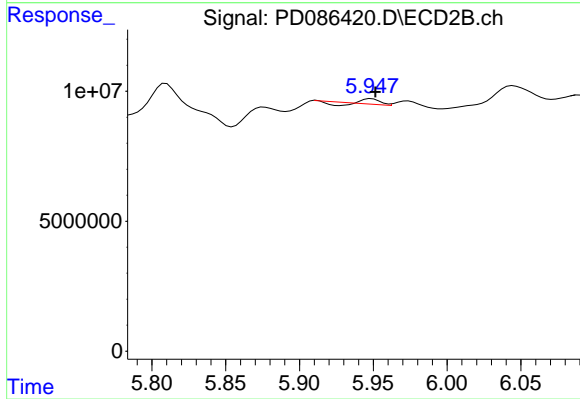
#15 Endosulfan II

R.T.: 6.121 min
 Delta R.T.: 0.020 min
 Response: 29218507
 Conc: 2.65 ng/ml



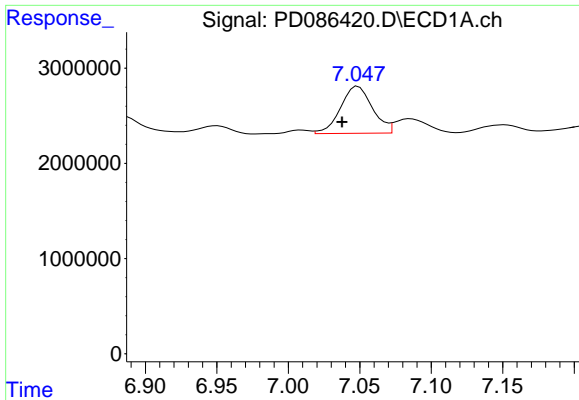
#16 4,4'-DDD

R.T.: 6.703 min
 Delta R.T.: -0.018 min
 Response: 3159720
 Conc: 1.95 ng/ml



#16 4,4'-DDD

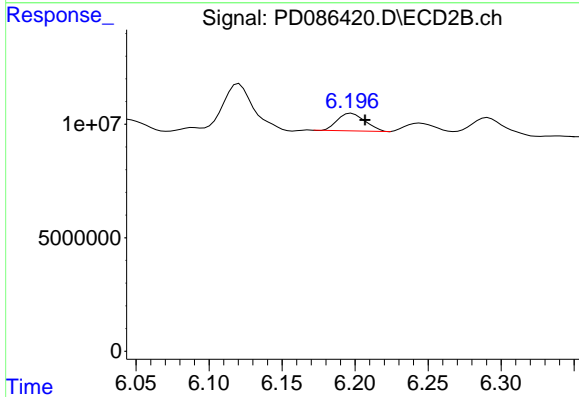
R.T.: 5.949 min
 Delta R.T.: -0.003 min
 Response: 664689
 Conc: N.D.



#17 4,4'-DDT

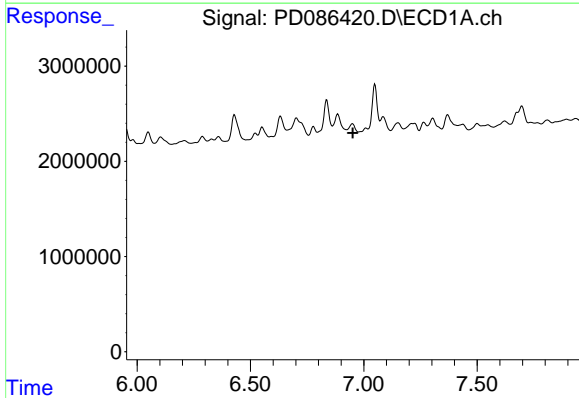
R.T.: 7.049 min
 Delta R.T.: 0.011 min
 Response: 7658761
 Conc: 4.59 ng/ml

Instrument :
 ECD_D
 ClientSampleId :



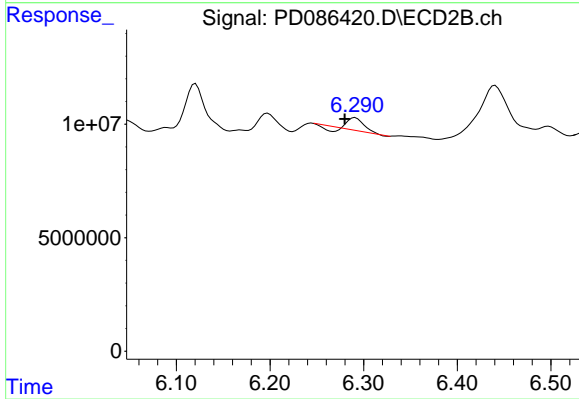
#17 4,4'-DDT

R.T.: 6.198 min
 Delta R.T.: -0.009 min
 Response: 10225892
 Conc: 1.00 ng/ml



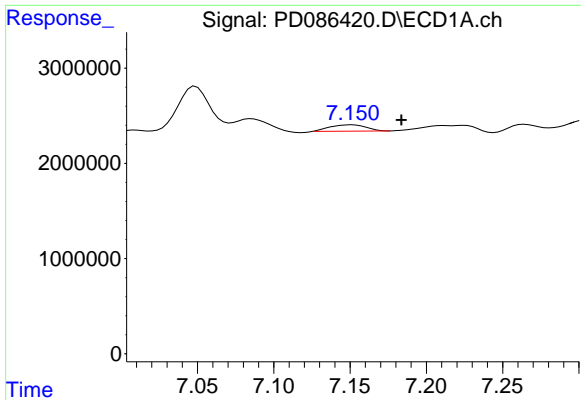
#18 Endrin aldehyde

R.T.: 6.950 min
 Delta R.T.: -0.001 min
 Response: -969815
 Conc: N.D.



#18 Endrin aldehyde

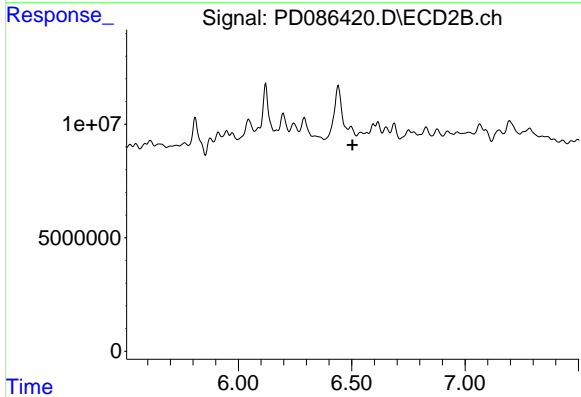
R.T.: 6.291 min
 Delta R.T.: 0.011 min
 Response: 4764639
 Conc: 0.57 ng/ml



#19 Endosulfan Sulfate

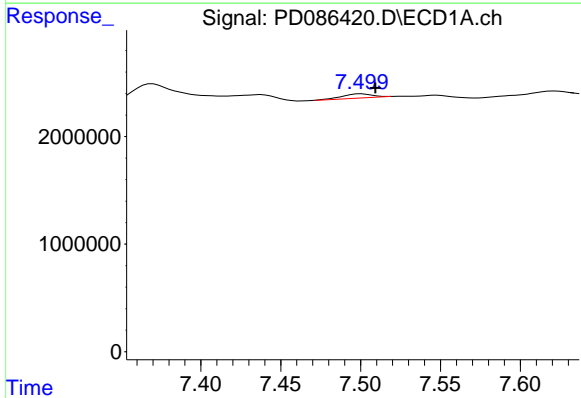
R.T.: 7.151 min
 Delta R.T.: -0.033 min
 Response: 1115037
 Conc: 0.60 ng/ml

Instrument :
 ECD_D
 ClientSampleId :



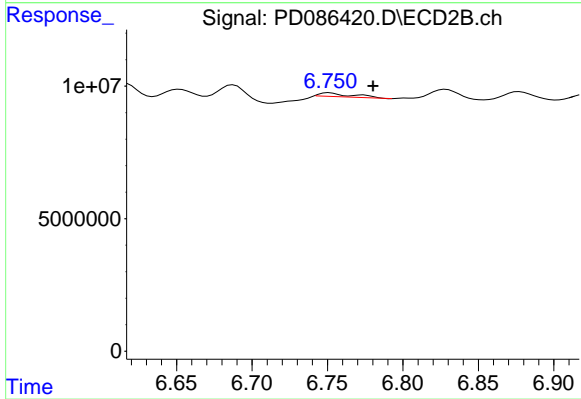
#19 Endosulfan Sulfate

R.T.: 6.497 min
 Delta R.T.: -0.007 min
 Response: -1960070
 Conc: N.D.



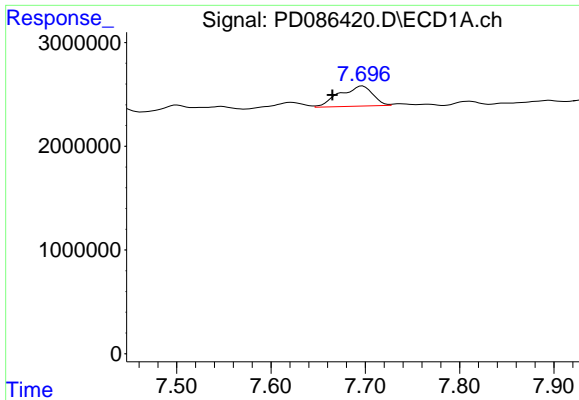
#20 Methoxychlor

R.T.: 7.501 min
 Delta R.T.: -0.009 min
 Response: 500847
 Conc: 0.53 ng/ml



#20 Methoxychlor

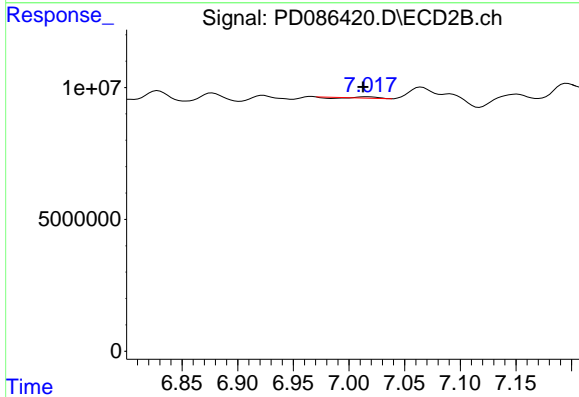
R.T.: 6.774 min
 Delta R.T.: -0.007 min
 Response: 2108840
 Conc: 0.44 ng/ml



#21 Endrin ketone

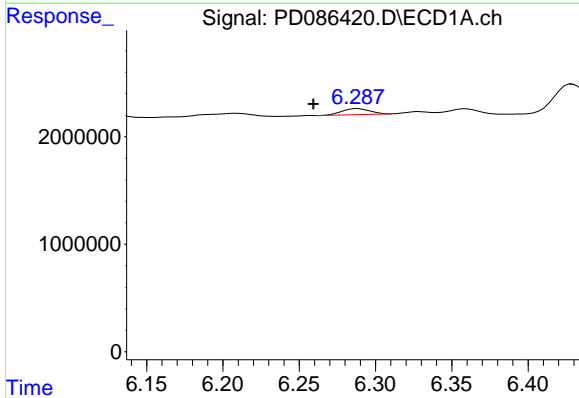
R.T.: 7.697 min
 Delta R.T.: 0.032 min
 Response: 4734348
 Conc: 2.30 ng/ml

Instrument :
 ECD_D
 ClientSampleId :



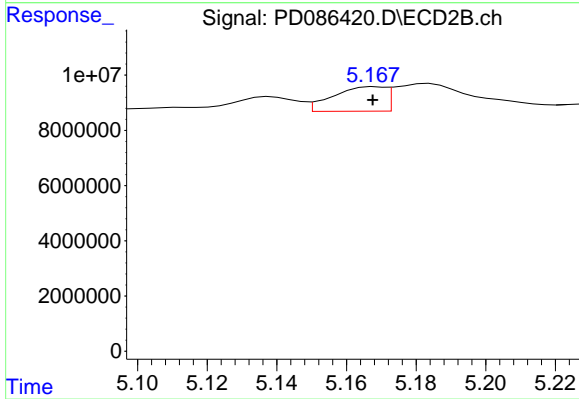
#21 Endrin ketone

R.T.: 7.017 min
 Delta R.T.: 0.004 min
 Response: 98453
 Conc: N.D.



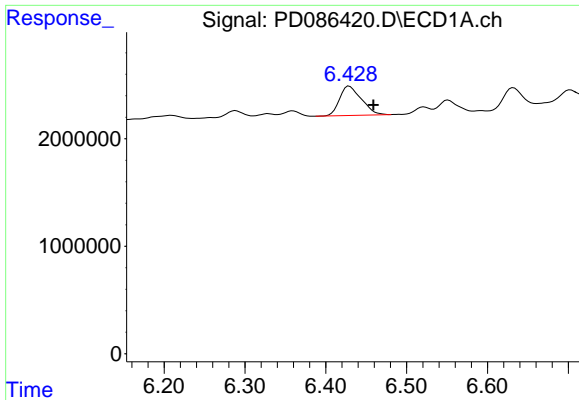
#22 Toxaphene-1

R.T.: 6.288 min
 Delta R.T.: 0.029 min
 Response: 705939
 Conc: 50.91 ng/ml



#22 Toxaphene-1

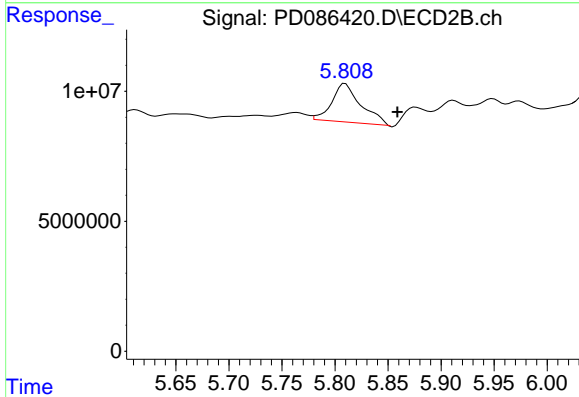
R.T.: 5.168 min
 Delta R.T.: 0.000 min
 Response: 9171072
 Conc: 139.72 ng/ml



#23 Toxaphene-2

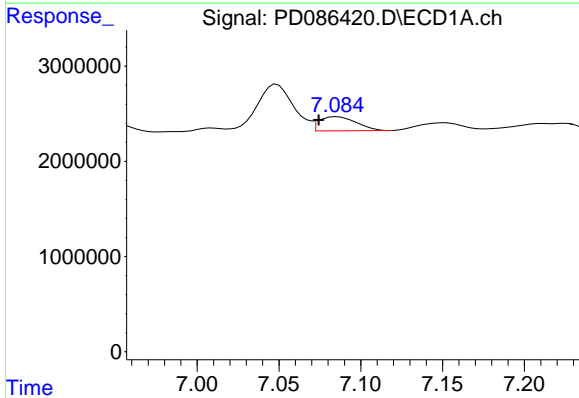
R.T.: 6.429 min
 Delta R.T.: -0.030 min
 Response: 5111930
 Conc: 257.37 ng/ml

Instrument :
 ECD_D
 ClientSampleId :



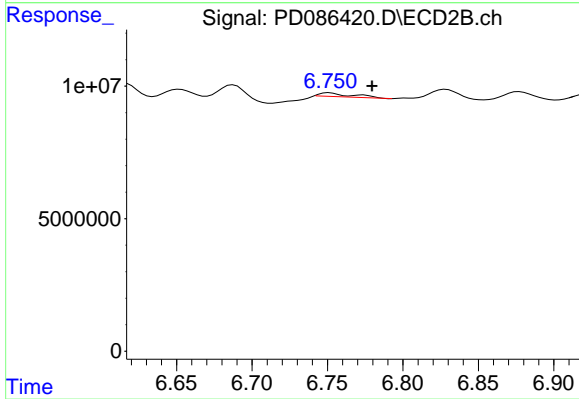
#23 Toxaphene-2

R.T.: 5.810 min
 Delta R.T.: -0.049 min
 Response: 27937210
 Conc: 398.73 ng/ml



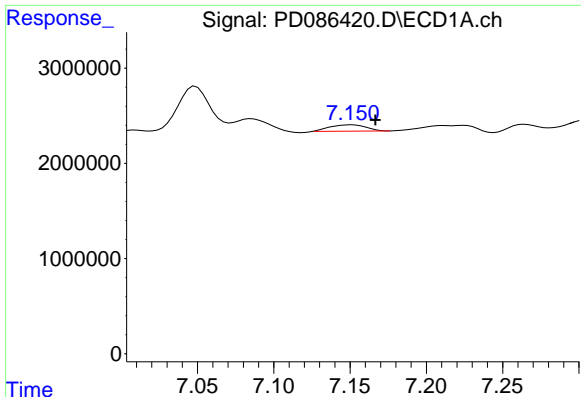
#24 Toxaphene-3

R.T.: 7.086 min
 Delta R.T.: 0.011 min
 Response: 2362811
 Conc: 44.18 ng/ml



#24 Toxaphene-3

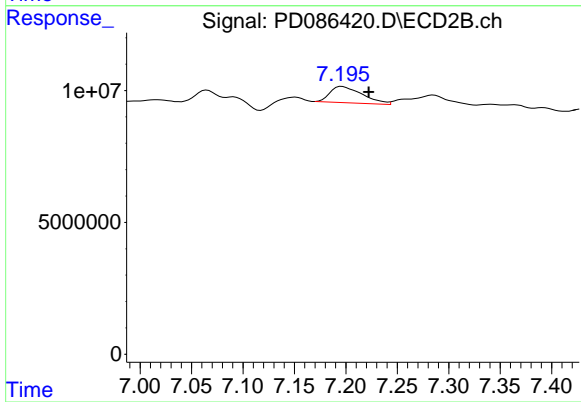
R.T.: 6.774 min
 Delta R.T.: -0.006 min
 Response: 2108840
 Conc: 9.18 ng/ml



#25 Toxaphene-4

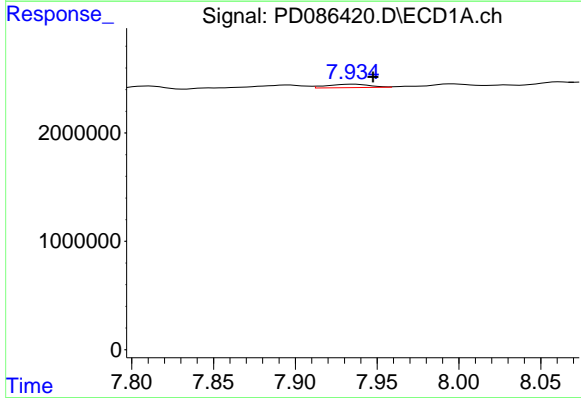
R.T.: 7.151 min
 Delta R.T.: -0.016 min
 Response: 1115037
 Conc: 28.07 ng/ml

Instrument :
 ECD_D
 ClientSampleId :



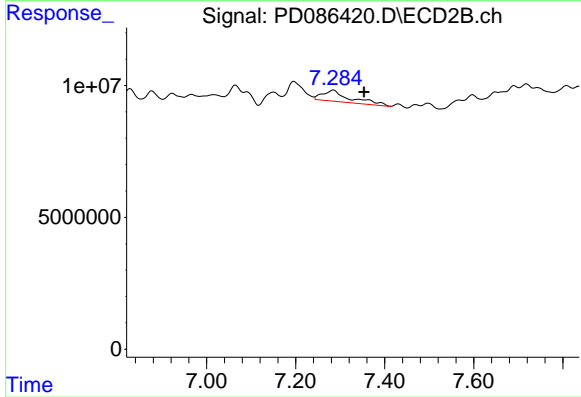
#25 Toxaphene-4

R.T.: 7.197 min
 Delta R.T.: -0.025 min
 Response: 13423505
 Conc: 82.71 ng/ml



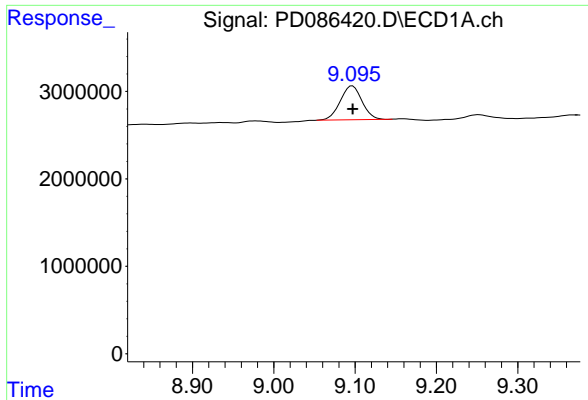
#26 Toxaphene-5

R.T.: 7.935 min
 Delta R.T.: -0.012 min
 Response: 563969
 Conc: 19.87 ng/ml



#26 Toxaphene-5

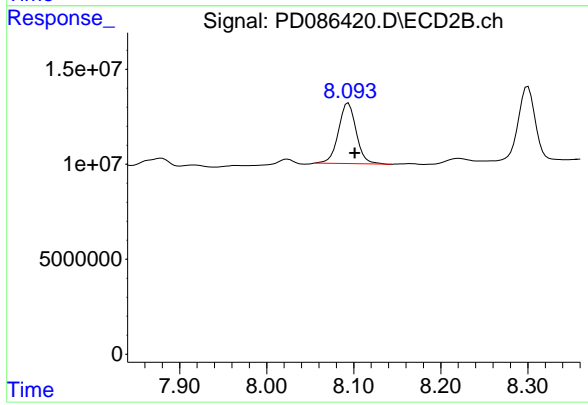
R.T.: 7.285 min
 Delta R.T.: -0.069 min
 Response: 18513180
 Conc: 158.30 ng/ml



#27 Decachlorobiphenyl

R.T.: 9.097 min
 Delta R.T.: 0.000 min
 Response: 7192297
 Conc: 4.01 ng/ml

Instrument :
 ECD_D
 ClientSampleId :



#27 Decachlorobiphenyl

R.T.: 8.094 min
 Delta R.T.: -0.007 min
 Response: 45109577
 Conc: 4.77 ng/ml