

Data Path : Z:\pestpcbsrv\HPCHEM1\ECD_D\Data\PD110724\
 Data File : PD086439.D
 Signal(s) : Signal #1: ECD1A.ch Signal #2: ECD2B.ch
 Acq On : 07 Nov 2024 19:34
 Operator : AR\AJ
 Sample : P1621-11MS
 Misc :
 ALS Vial : 23 Sample Multiplier: 1

Instrument :
 ECD_D
 ClientSampleId :

Integration File signal 1: autoint1.e
 Integration File signal 2: autoint2.e
 Quant Time: Nov 08 01:00:54 2024
 Quant Method : Z:\pestpcbsrv\HPCHEM1\ECD_D\Method\PD102524CLP.M
 Quant Title : GC Extractables
 QLast Update : Fri Oct 25 14:36:38 2024
 Response via : Initial Calibration
 Integrator: ChemStation

Volume Inj. : 1 µl
 Signal #1 Phase : ZB-MR1 Signal #2 Phase: ZB-MR2
 Signal #1 Info : 30M x 0.32mm x0.5 Signal #2 Info : 30M x 0.32mm x 0.25µm

	Compound	RT#1	RT#2	Resp#1	Resp#2	ng/ml	ng/ml

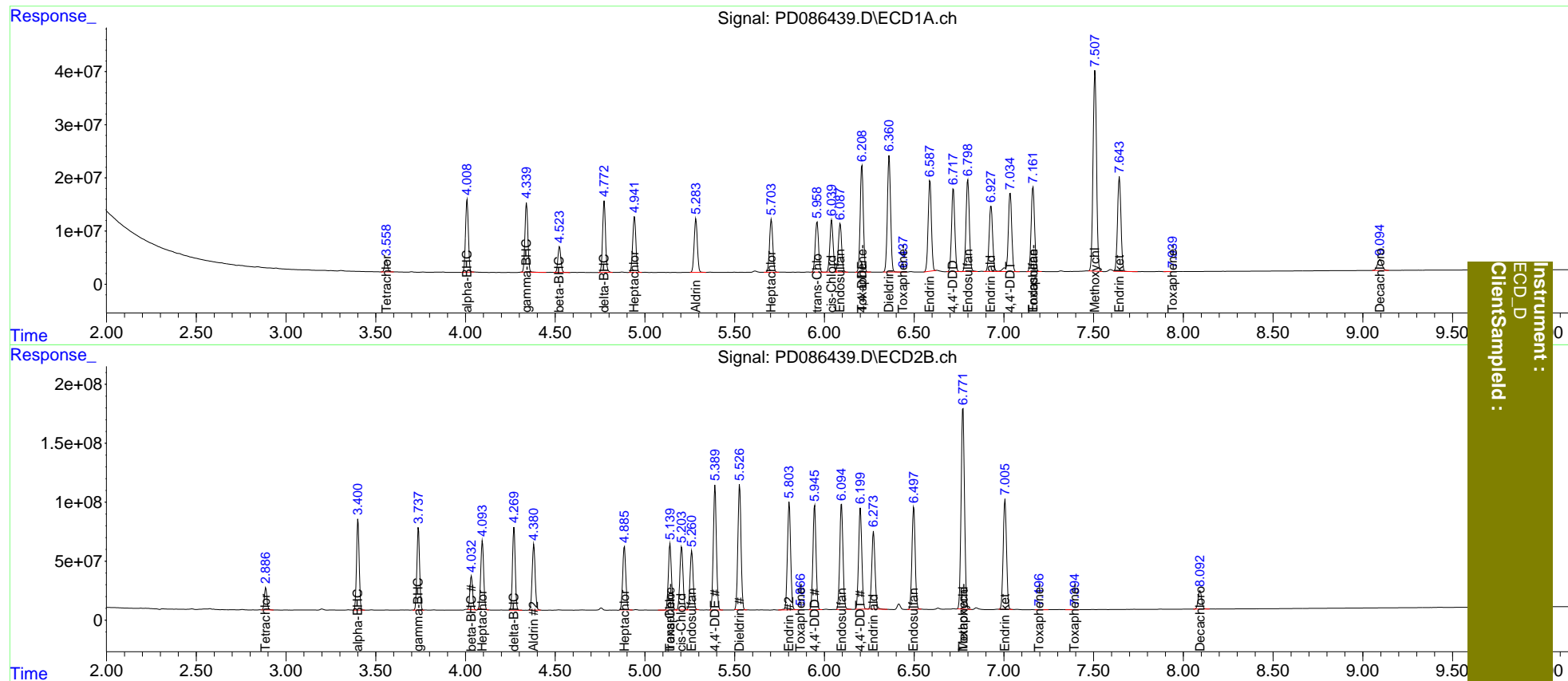
System Monitoring Compounds							
1)	SA Tetrachlo...	3.559	2.888	24802203	191.6E6	18.838	20.657
27)	SA Decachlor...	9.096	8.093	36963874	214.2E6	20.618	22.649
Target Compounds							
2)	A alpha-BHC	4.009	3.402	149.8E6	794.7E6	60.160	55.309
3)	MA gamma-BHC...	4.341	3.738	146.5E6	739.4E6	58.863	54.821
4)	MA Heptachlor	4.942	4.095	128.7E6	650.9E6	52.075	47.640
5)	MB Aldrin	5.284	4.381	124.2E6	651.1E6	51.243	47.996
6)	B beta-BHC	4.524	4.033	55119226	302.0E6	49.632	48.170
7)	B delta-BHC	4.773	4.271	151.7E6	747.2E6	58.596	53.254
8)	Heptachlo...	5.704	4.886	124.9E6	645.2E6	54.673	51.452
9)	A Endosulfan I	6.088	5.261	117.6E6	607.5E6	58.052	52.913
10)	B trans-Chl...	5.959	5.140	121.5E6	673.4E6	55.067	51.193
11)	B cis-Chlor...	6.041	5.205	124.1E6	660.1E6	56.141	51.972
12)	B 4,4'-DDE	6.209	5.391	244.3E6	1259.4E6	114.389	102.710
13)	MA Dieldrin	6.361	5.528	271.4E6	1288.8E6	119.006	104.460
14)	MA Endrin	6.588	5.804	214.7E6	1138.3E6	114.226	101.287
15)	B Endosulfa...	6.799	6.096	224.1E6	1120.9E6	111.773	101.601
16)	A 4,4'-DDD	6.719	5.946	196.6E6	1067.7E6	121.328	108.766
17)	MA 4,4'-DDT	7.036	6.201	202.3E6	1068.6E6	121.350	104.138
18)	B Endrin al...	6.929	6.274	166.9E6	843.2E6	111.862	101.584
19)	B Endosulfa...	7.163	6.498	211.3E6	1093.3E6	114.654	103.711
20)	A Methoxychlor	7.508	6.772	507.9E6	2236.6E6	539.635	470.531
21)	B Endrin ke...	7.644	7.007	237.8E6	1199.9E6	115.378	104.863
22)	Toxaphene-1	6.209f	5.140	244.3E6	673.4E6	17620.811	10259.774 #
23)	Toxaphene-2	6.439	5.867	190810	1081056	9.607	15.429 #
24)	Toxaphene-3	7.106	6.772	-23107	2236.6E6	N.D.	9733.361
25)	Toxaphene-4	7.163	7.198	211.3E6	5198474	5320.501	32.030 #
26)	Toxaphene-5	7.941	7.395f	103400	3911224	3.643	33.443 #

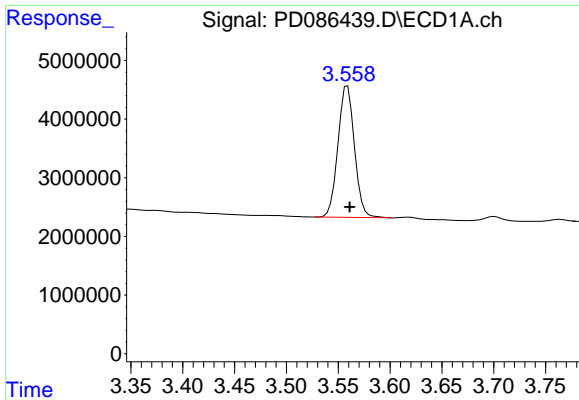
(f)=RT Delta > 1/2 Window (#)=Amounts differ by > 25% (m)=manual int.

Data Path : Z:\pestpcbsrv\HPCHEM1\ECD_D\Data\PD110724\
 Data File : PD086439.D
 Signal(s) : Signal #1: ECD1A.ch Signal #2: ECD2B.ch
 Acq On : 07 Nov 2024 19:34
 Operator : AR\AJ
 Sample : P1621-11MS
 Misc :
 ALS Vial : 23 Sample Multiplier: 1

Integration File signal 1: autoint1.e
 Integration File signal 2: autoint2.e
 Quant Time: Nov 08 01:00:54 2024
 Quant Method : Z:\pestpcbsrv\HPCHEM1\ECD_D\Method\PD102524CLP.M
 Quant Title : GC Extractables
 QLast Update : Fri Oct 25 14:36:38 2024
 Response via : Initial Calibration
 Integrator: ChemStation

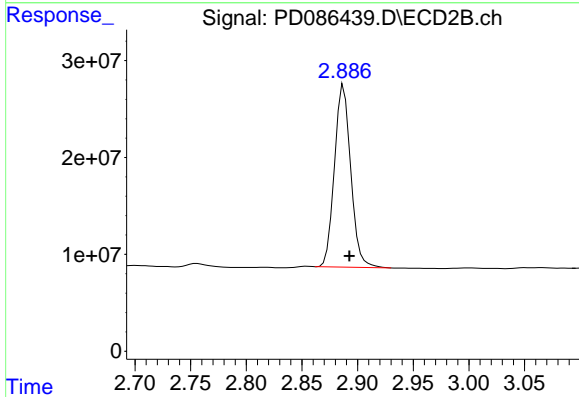
Volume Inj. : 1 µl
 Signal #1 Phase : ZB-MR1 Signal #2 Phase: ZB-MR2
 Signal #1 Info : 30M x 0.32mm x0.5 Signal #2 Info : 30M x 0.32mm x 0.25µm



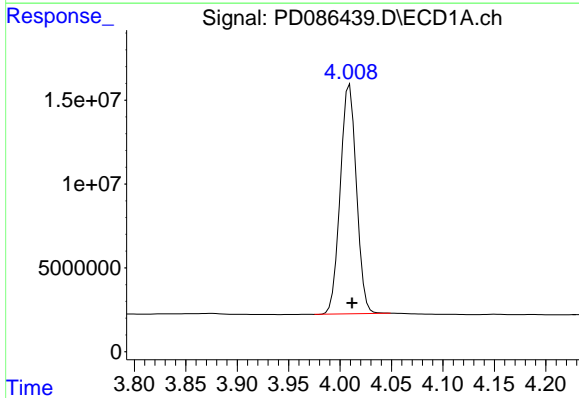


#1 Tetrachloro-m-xylene
 R.T.: 3.559 min
 Delta R.T.: -0.002 min
 Response: 24802203
 Conc: 18.84 ng/ml

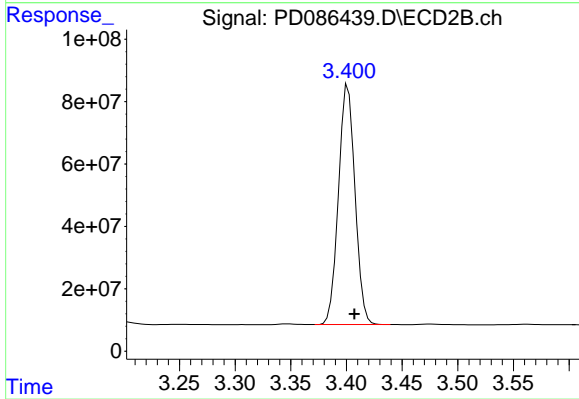
Instrument :
 ECD_D
 ClientSampleId :



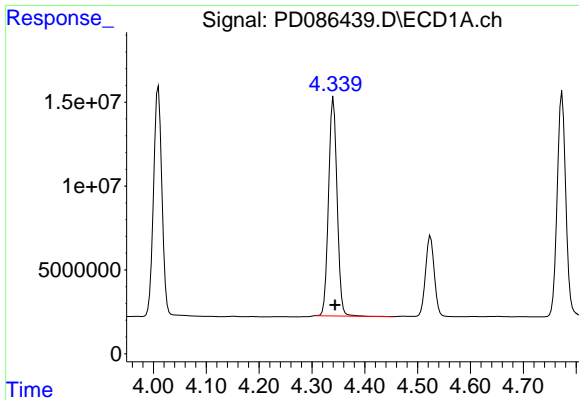
#1 Tetrachloro-m-xylene
 R.T.: 2.888 min
 Delta R.T.: -0.005 min
 Response: 191610051
 Conc: 20.66 ng/ml



#2 alpha-BHC
 R.T.: 4.009 min
 Delta R.T.: -0.002 min
 Response: 149762645
 Conc: 60.16 ng/ml

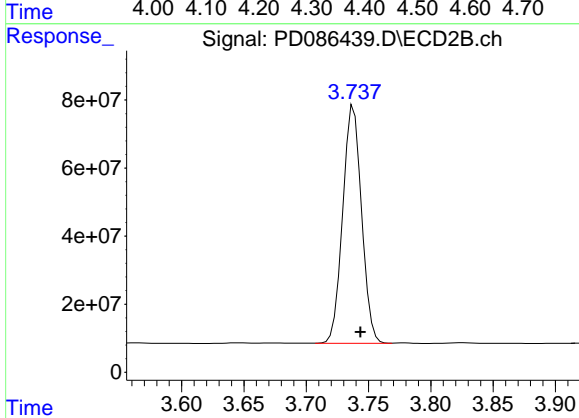


#2 alpha-BHC
 R.T.: 3.402 min
 Delta R.T.: -0.006 min
 Response: 794659900
 Conc: 55.31 ng/ml

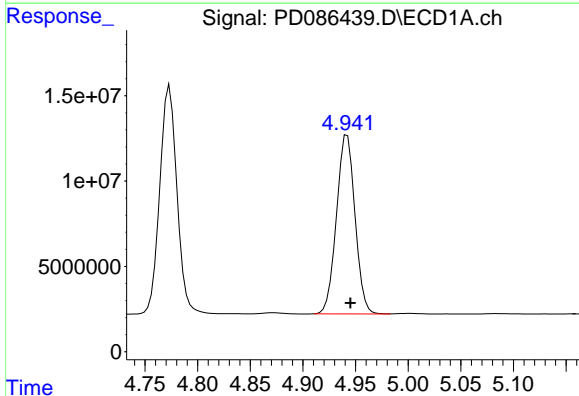


#3 gamma-BHC (Lindane)
 R.T.: 4.341 min
 Delta R.T.: -0.003 min
 Response: 146451146
 Conc: 58.86 ng/ml

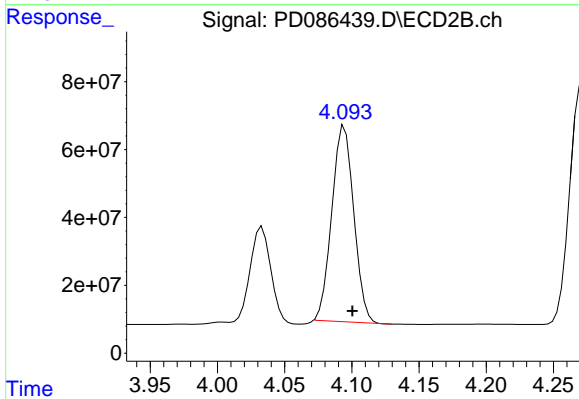
Instrument :
 ECD_D
 ClientSampleId :



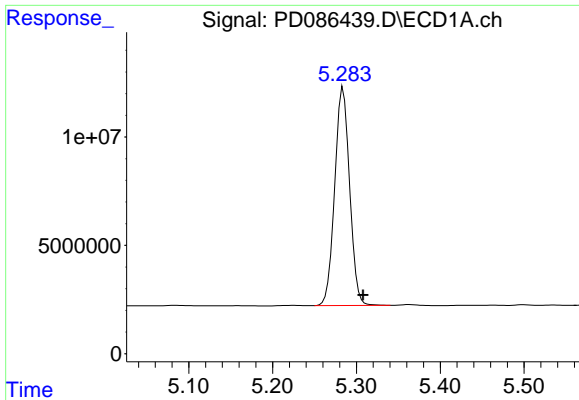
#3 gamma-BHC (Lindane)
 R.T.: 3.738 min
 Delta R.T.: -0.005 min
 Response: 739410196
 Conc: 54.82 ng/ml



#4 Heptachlor
 R.T.: 4.942 min
 Delta R.T.: -0.003 min
 Response: 128736131
 Conc: 52.07 ng/ml



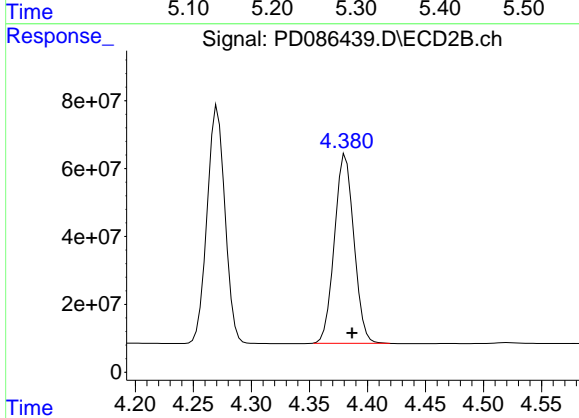
#4 Heptachlor
 R.T.: 4.095 min
 Delta R.T.: -0.006 min
 Response: 650852773
 Conc: 47.64 ng/ml



#5 Aldrin

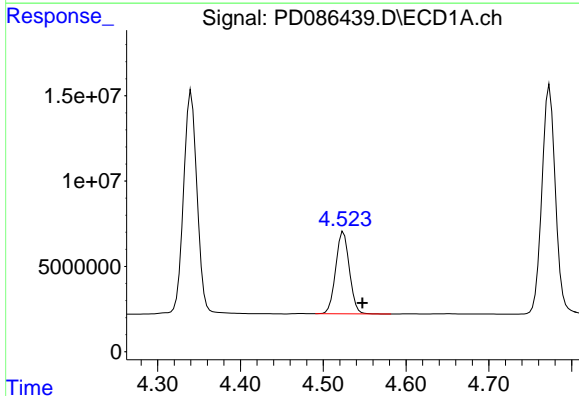
R.T.: 5.284 min
 Delta R.T.: -0.024 min
 Response: 124195824
 Conc: 51.24 ng/ml

Instrument :
 ECD_D
 ClientSampleId :



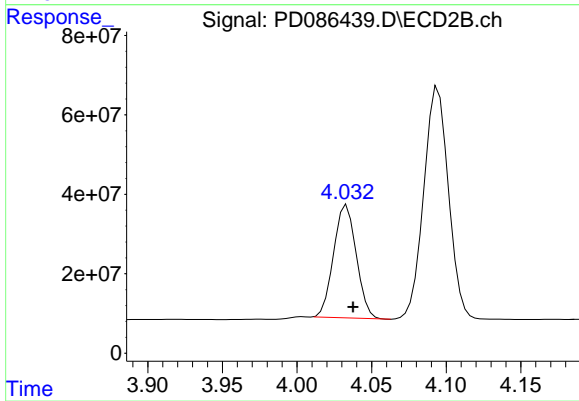
#5 Aldrin

R.T.: 4.381 min
 Delta R.T.: -0.006 min
 Response: 651147121
 Conc: 48.00 ng/ml



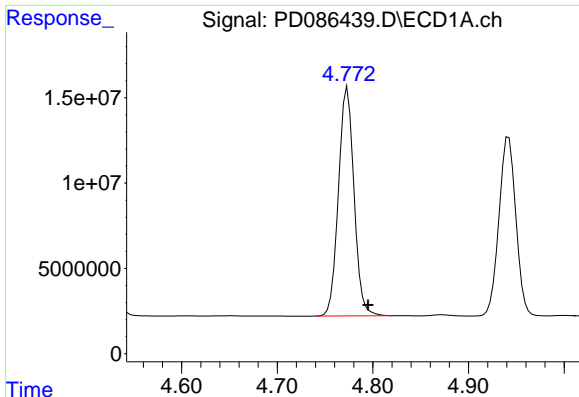
#6 beta-BHC

R.T.: 4.524 min
 Delta R.T.: -0.023 min
 Response: 55119226
 Conc: 49.63 ng/ml



#6 beta-BHC

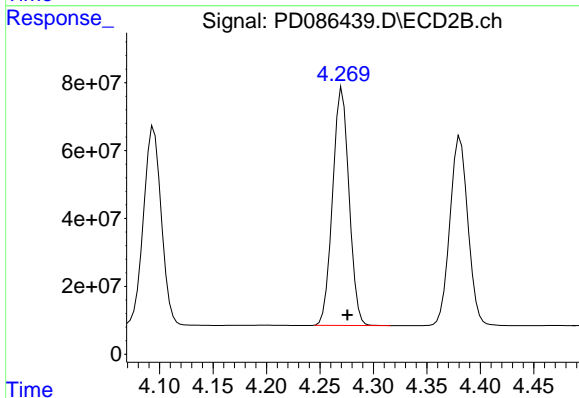
R.T.: 4.033 min
 Delta R.T.: -0.004 min
 Response: 302019742
 Conc: 48.17 ng/ml



#7 delta-BHC

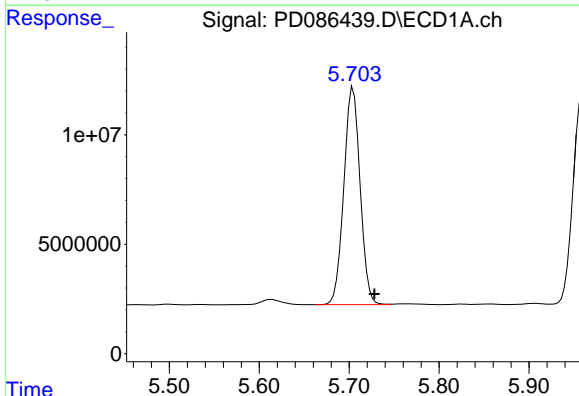
R.T.: 4.773 min
 Delta R.T.: -0.022 min
 Response: 151680156
 Conc: 58.60 ng/ml

Instrument :
 ECD_D
 ClientSampleId :



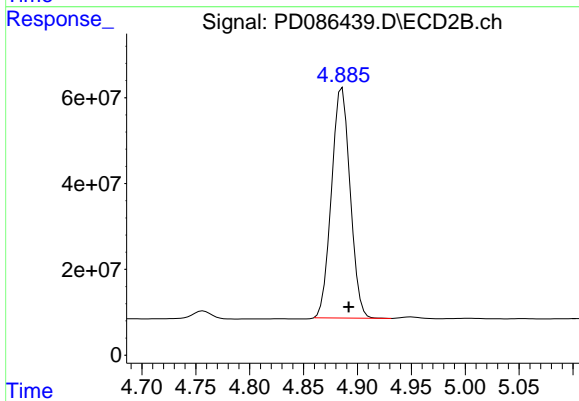
#7 delta-BHC

R.T.: 4.271 min
 Delta R.T.: -0.005 min
 Response: 747243847
 Conc: 53.25 ng/ml



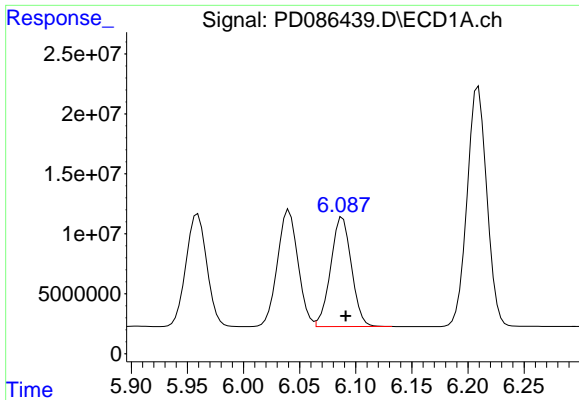
#8 Heptachlor epoxide

R.T.: 5.704 min
 Delta R.T.: -0.024 min
 Response: 124943335
 Conc: 54.67 ng/ml



#8 Heptachlor epoxide

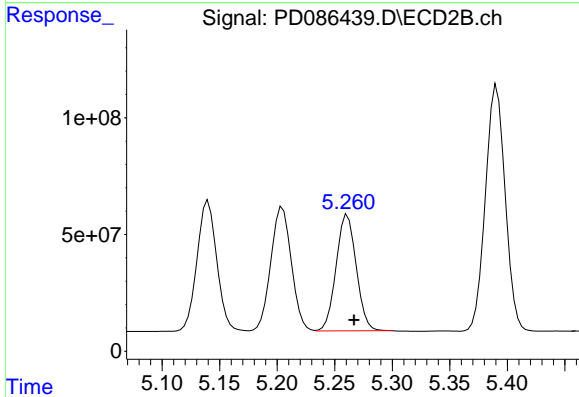
R.T.: 4.886 min
 Delta R.T.: -0.006 min
 Response: 645192557
 Conc: 51.45 ng/ml



#9 Endosulfan I

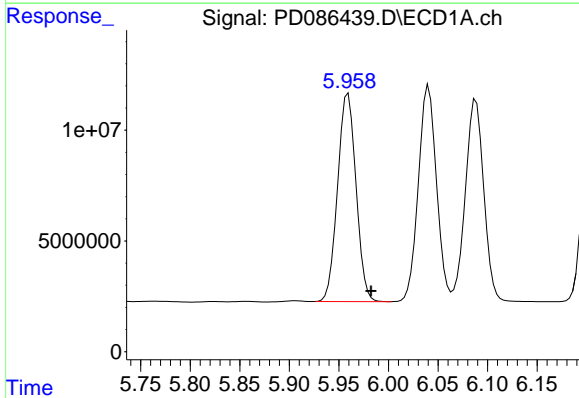
R.T.: 6.088 min
 Delta R.T.: -0.003 min
 Response: 117585345
 Conc: 58.05 ng/ml

Instrument :
 ECD_D
 ClientSampleId :



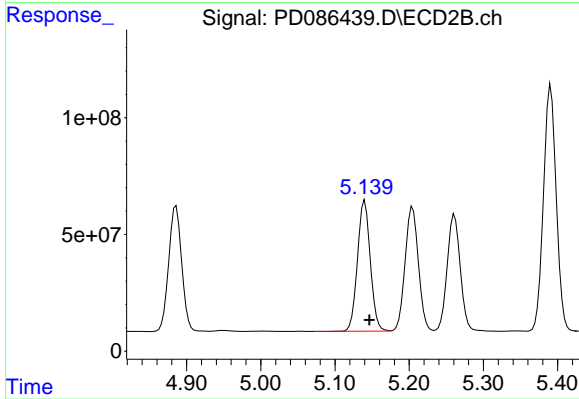
#9 Endosulfan I

R.T.: 5.261 min
 Delta R.T.: -0.006 min
 Response: 607522521
 Conc: 52.91 ng/ml



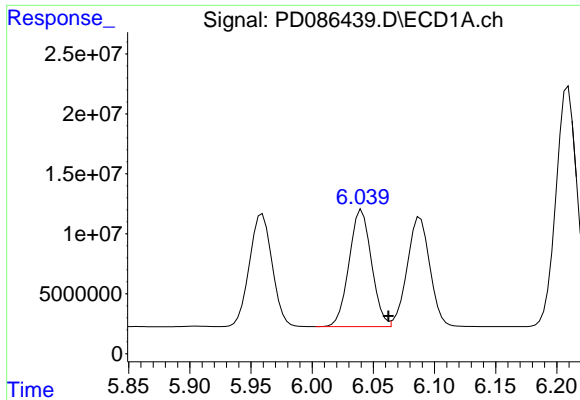
#10 trans-Chlordane

R.T.: 5.959 min
 Delta R.T.: -0.023 min
 Response: 121508015
 Conc: 55.07 ng/ml



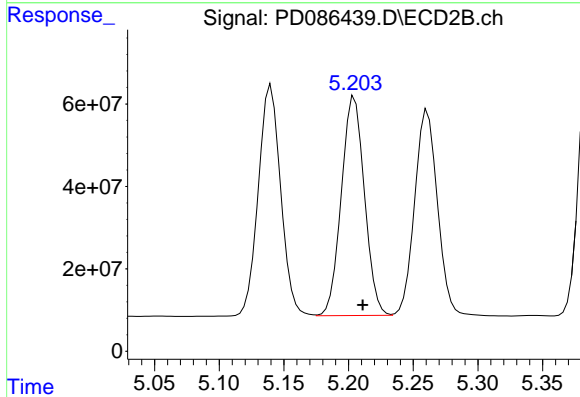
#10 trans-Chlordane

R.T.: 5.140 min
 Delta R.T.: -0.006 min
 Response: 673421435
 Conc: 51.19 ng/ml

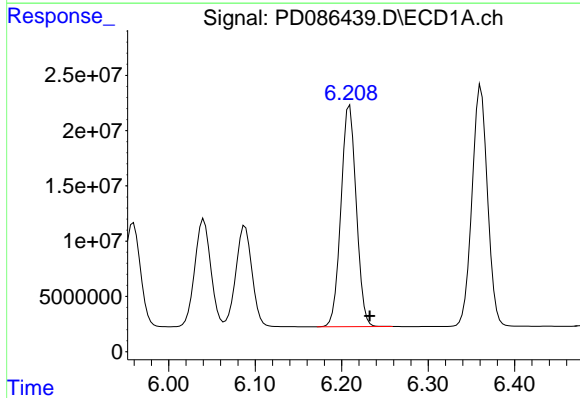


#11 cis-Chlordane
 R.T.: 6.041 min
 Delta R.T.: -0.022 min
 Response: 124133510
 Conc: 56.14 ng/ml

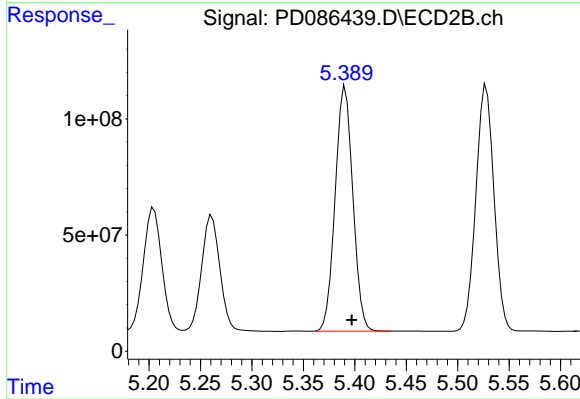
Instrument :
 ECD_D
 ClientSampleId :



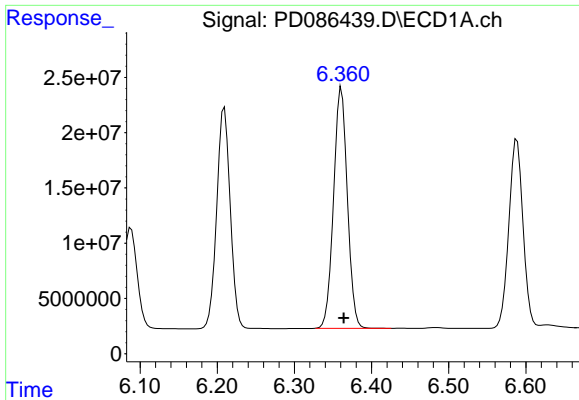
#11 cis-Chlordane
 R.T.: 5.205 min
 Delta R.T.: -0.006 min
 Response: 660102485
 Conc: 51.97 ng/ml



#12 4,4'-DDE
 R.T.: 6.209 min
 Delta R.T.: -0.023 min
 Response: 244324899
 Conc: 114.39 ng/ml



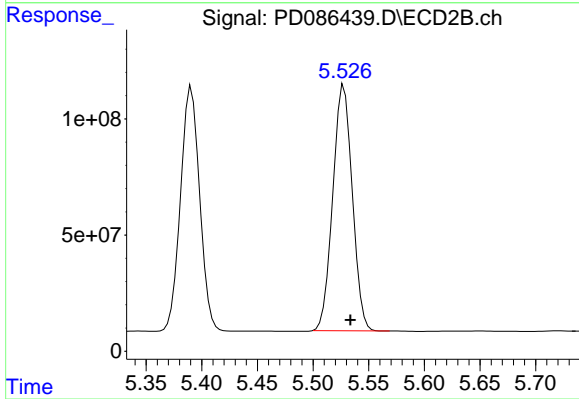
#12 4,4'-DDE
 R.T.: 5.391 min
 Delta R.T.: -0.006 min
 Response: 1259367402
 Conc: 102.71 ng/ml



#13 Dieldrin

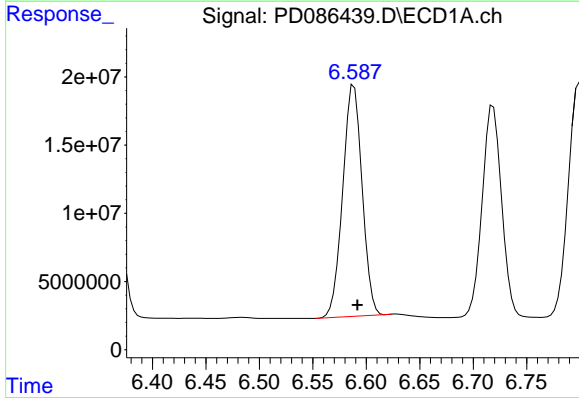
R.T.: 6.361 min
 Delta R.T.: -0.003 min
 Response: 271445504
 Conc: 119.01 ng/ml

Instrument :
 ECD_D
 ClientSampleId :



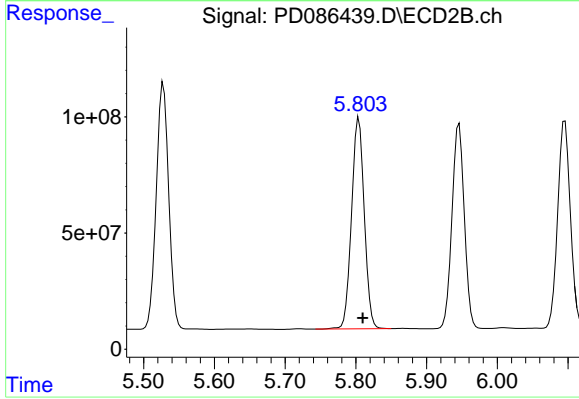
#13 Dieldrin

R.T.: 5.528 min
 Delta R.T.: -0.006 min
 Response: 1288777819
 Conc: 104.46 ng/ml



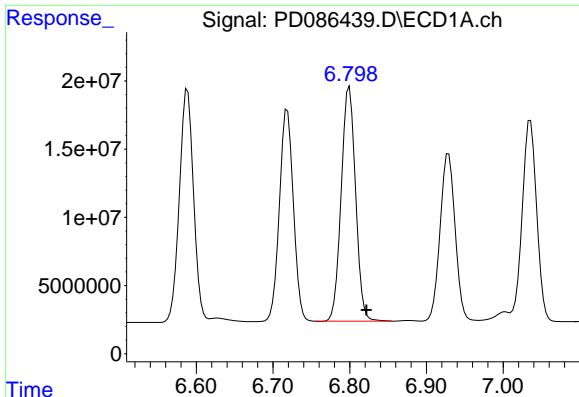
#14 Endrin

R.T.: 6.588 min
 Delta R.T.: -0.003 min
 Response: 214706940
 Conc: 114.23 ng/ml



#14 Endrin

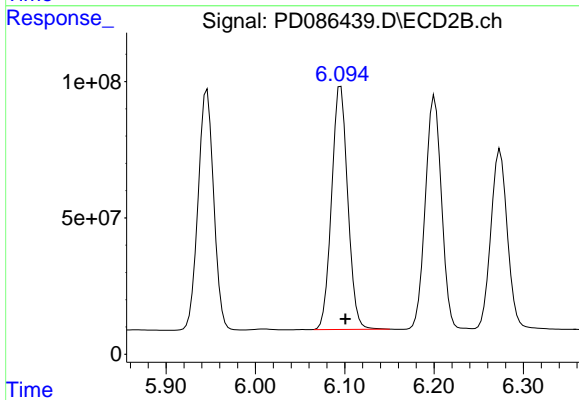
R.T.: 5.804 min
 Delta R.T.: -0.005 min
 Response: 1138252963
 Conc: 101.29 ng/ml



#15 Endosulfan II

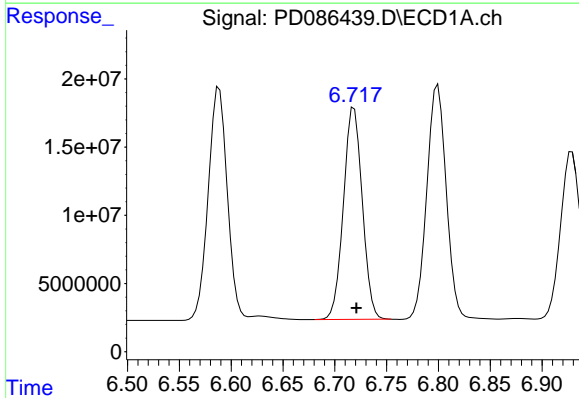
R.T.: 6.799 min
 Delta R.T.: -0.022 min
 Response: 224068759
 Conc: 111.77 ng/ml

Instrument :
 ECD_D
 ClientSampleId :



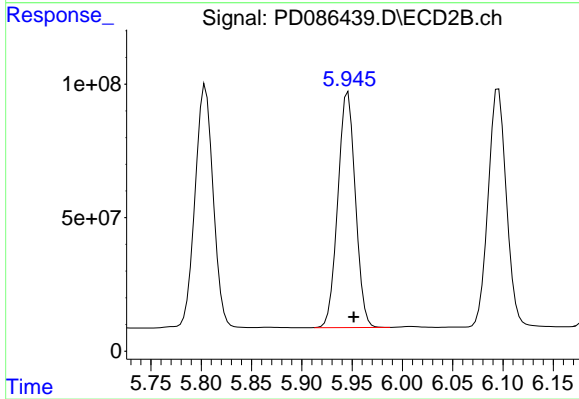
#15 Endosulfan II

R.T.: 6.096 min
 Delta R.T.: -0.005 min
 Response: 1120946232
 Conc: 101.60 ng/ml



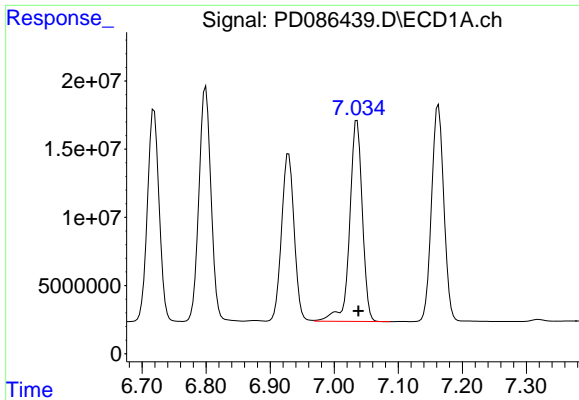
#16 4,4'-DDD

R.T.: 6.719 min
 Delta R.T.: -0.002 min
 Response: 196601217
 Conc: 121.33 ng/ml



#16 4,4'-DDD

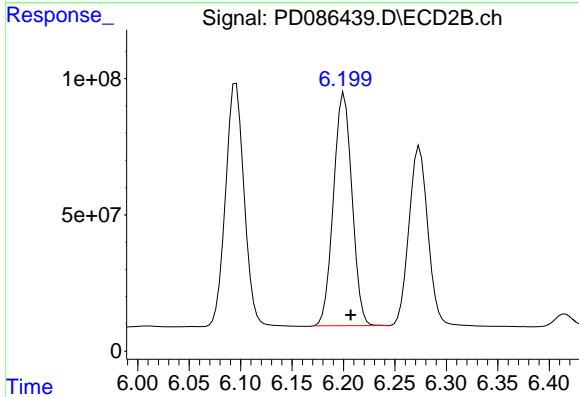
R.T.: 5.946 min
 Delta R.T.: -0.006 min
 Response: 1067675599
 Conc: 108.77 ng/ml



#17 4,4'-DDT

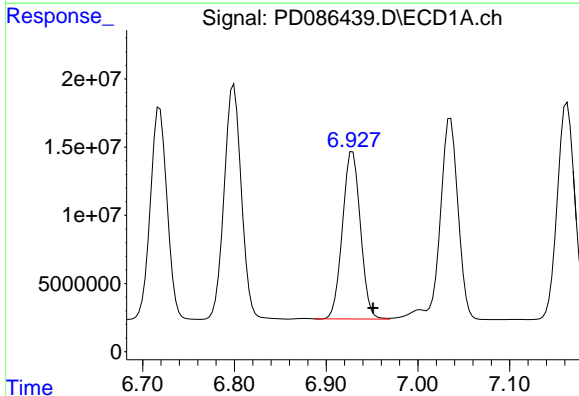
R.T.: 7.036 min
 Delta R.T.: -0.002 min
 Response: 202319242
 Conc: 121.35 ng/ml

Instrument :
 ECD_D
 ClientSampleId :



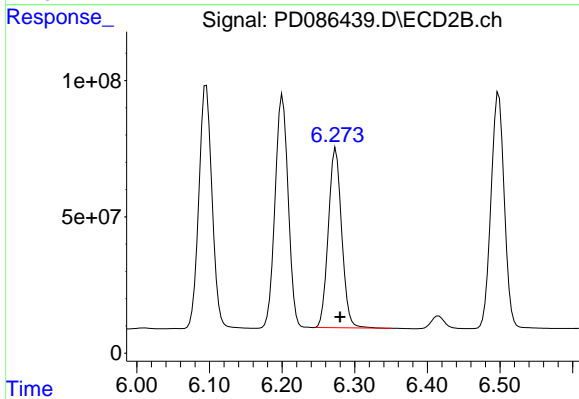
#17 4,4'-DDT

R.T.: 6.201 min
 Delta R.T.: -0.006 min
 Response: 1068646135
 Conc: 104.14 ng/ml



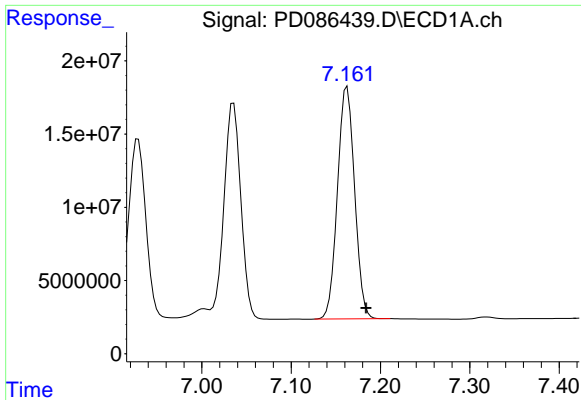
#18 Endrin aldehyde

R.T.: 6.929 min
 Delta R.T.: -0.022 min
 Response: 166868219
 Conc: 111.86 ng/ml



#18 Endrin aldehyde

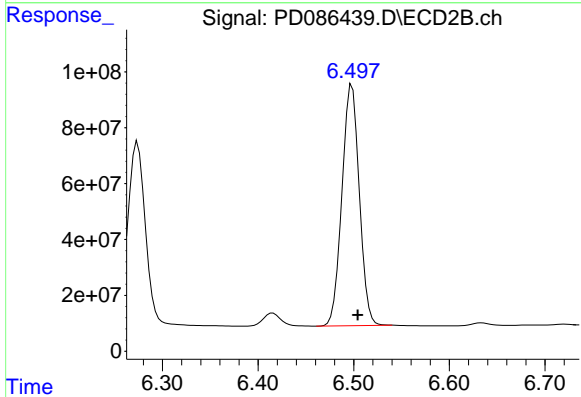
R.T.: 6.274 min
 Delta R.T.: -0.006 min
 Response: 843247760
 Conc: 101.58 ng/ml



#19 Endosulfan Sulfate

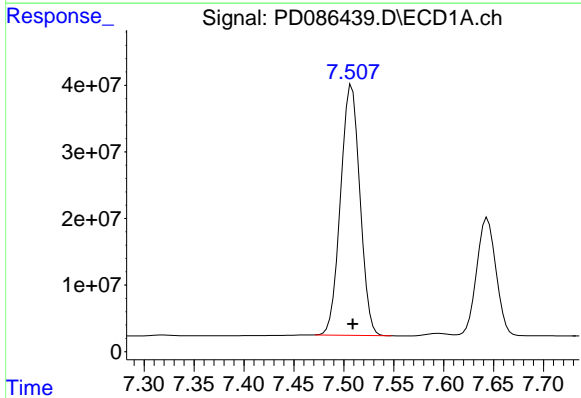
R.T.: 7.163 min
 Delta R.T.: -0.021 min
 Response: 211346192
 Conc: 114.65 ng/ml

Instrument :
 ECD_D
 ClientSampleId :



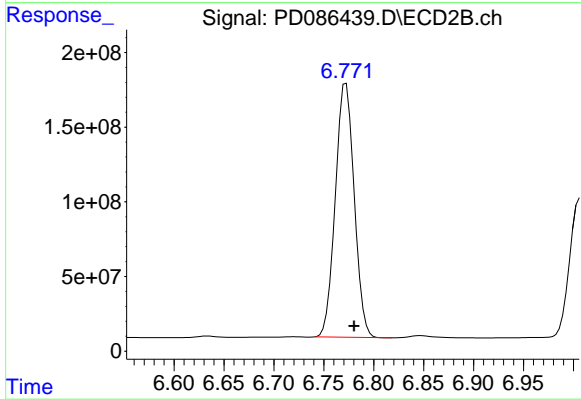
#19 Endosulfan Sulfate

R.T.: 6.498 min
 Delta R.T.: -0.006 min
 Response: 1093262544
 Conc: 103.71 ng/ml



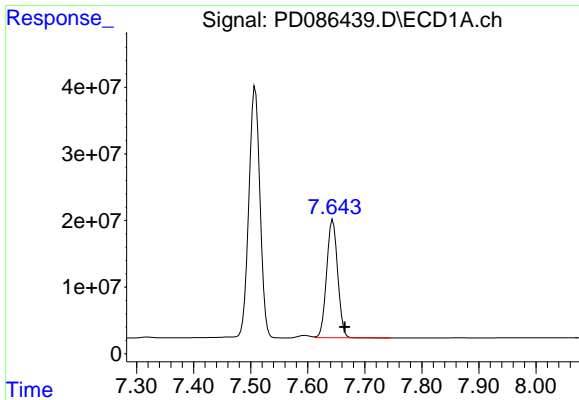
#20 Methoxychlor

R.T.: 7.508 min
 Delta R.T.: -0.001 min
 Response: 507857438
 Conc: 539.63 ng/ml



#20 Methoxychlor

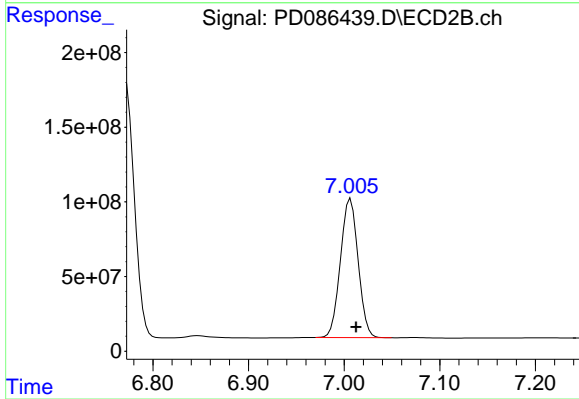
R.T.: 6.772 min
 Delta R.T.: -0.008 min
 Response: 2236579534
 Conc: 470.53 ng/ml



#21 Endrin ketone

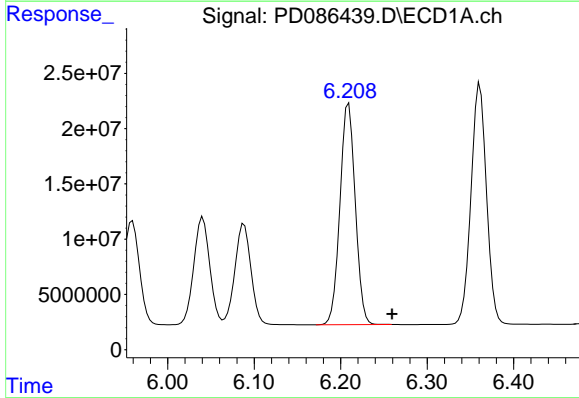
R.T.: 7.644 min
 Delta R.T.: -0.021 min
 Response: 237765693
 Conc: 115.38 ng/ml

Instrument :
 ECD_D
 ClientSampleId :



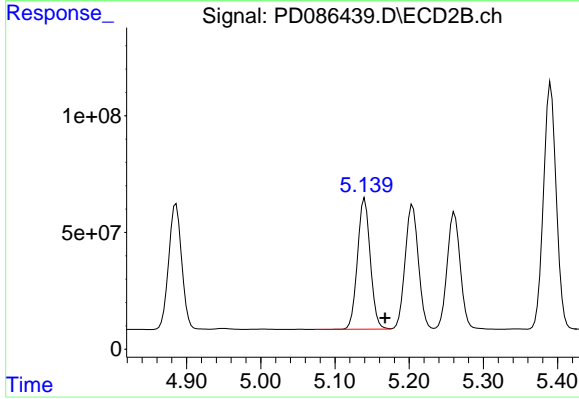
#21 Endrin ketone

R.T.: 7.007 min
 Delta R.T.: -0.006 min
 Response: 1199935835
 Conc: 104.86 ng/ml



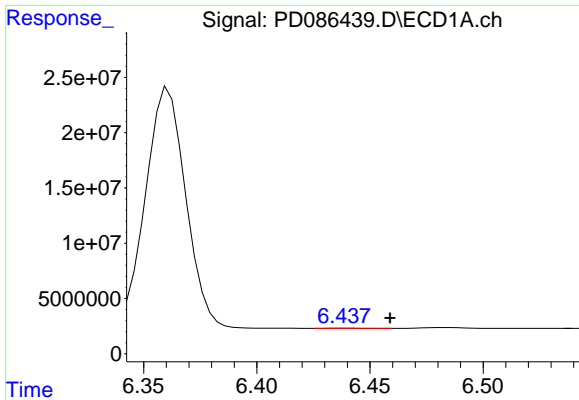
#22 Toxaphene-1

R.T.: 6.209 min
 Delta R.T.: -0.050 min
 Response: 244324899
 Conc: 17620.81 ng/ml



#22 Toxaphene-1

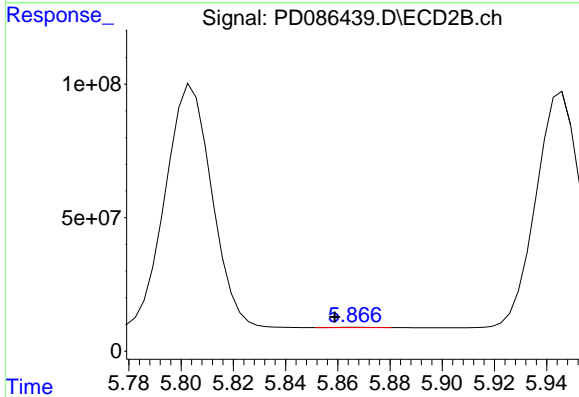
R.T.: 5.140 min
 Delta R.T.: -0.027 min
 Response: 673421435
 Conc: 10259.77 ng/ml



#23 Toxaphene-2

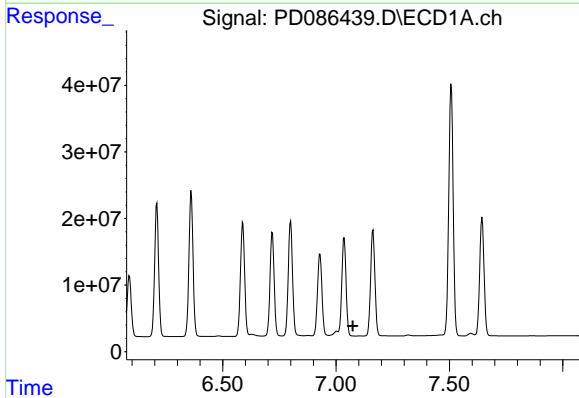
R.T.: 6.439 min
 Delta R.T.: -0.020 min
 Response: 190810
 Conc: 9.61 ng/ml

Instrument :
 ECD_D
 ClientSampleId :



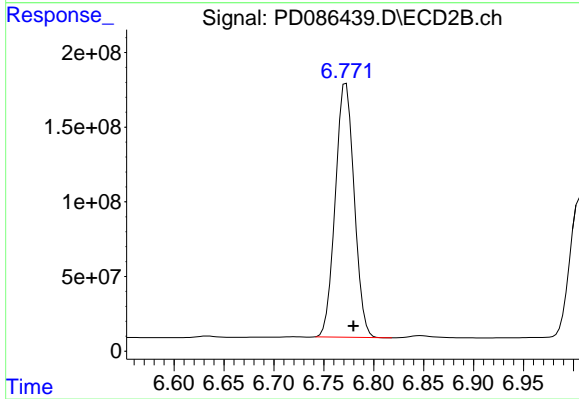
#23 Toxaphene-2

R.T.: 5.867 min
 Delta R.T.: 0.008 min
 Response: 1081056
 Conc: 15.43 ng/ml



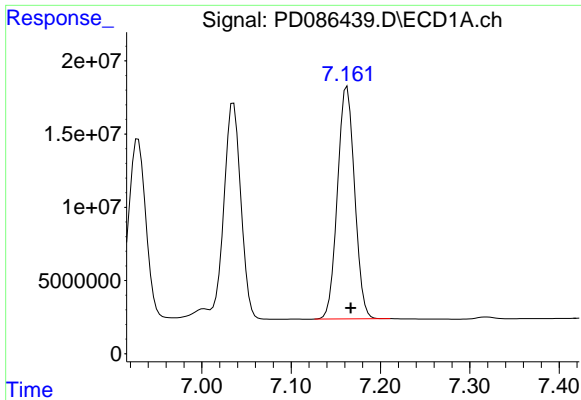
#24 Toxaphene-3

R.T.: 7.106 min
 Delta R.T.: 0.032 min
 Response: -23107
 Conc: N.D.



#24 Toxaphene-3

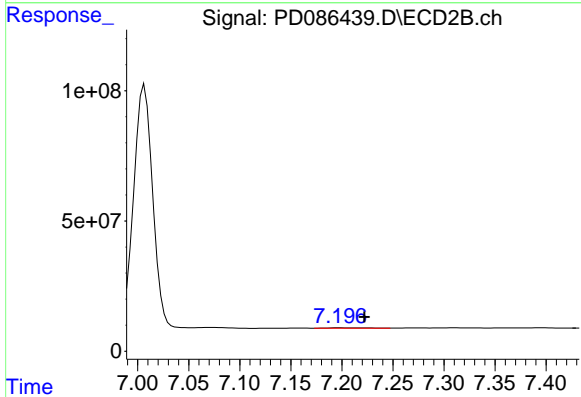
R.T.: 6.772 min
 Delta R.T.: -0.007 min
 Response: 2236579534
 Conc: 9733.36 ng/ml



#25 Toxaphene-4

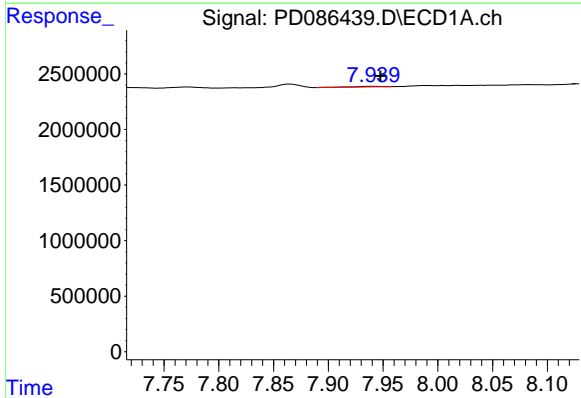
R.T.: 7.163 min
 Delta R.T.: -0.004 min
 Response: 211346192
 Conc: 5320.50 ng/m

Instrument :
 ECD_D
 ClientSampleId :



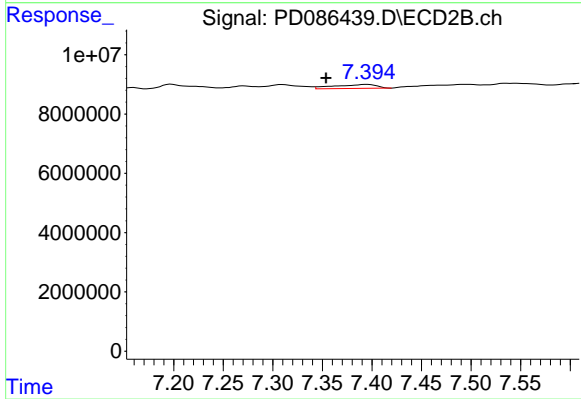
#25 Toxaphene-4

R.T.: 7.198 min
 Delta R.T.: -0.025 min
 Response: 5198474
 Conc: 32.03 ng/ml



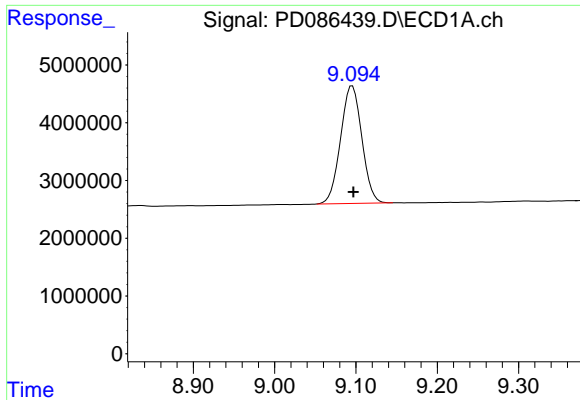
#26 Toxaphene-5

R.T.: 7.941 min
 Delta R.T.: -0.007 min
 Response: 103400
 Conc: 3.64 ng/ml



#26 Toxaphene-5

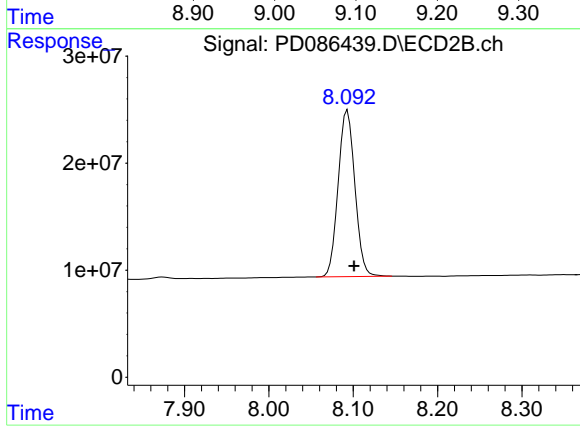
R.T.: 7.395 min
 Delta R.T.: 0.041 min
 Response: 3911224
 Conc: 33.44 ng/ml



#27 Decachlorobiphenyl

R.T.: 9.096 min
Delta R.T.: -0.001 min
Response: 36963874
Conc: 20.62 ng/ml

Instrument :
ECD_D
ClientSampleId :



#27 Decachlorobiphenyl

R.T.: 8.093 min
Delta R.T.: -0.008 min
Response: 214164699
Conc: 22.65 ng/ml