

Data Path : Z:\pestpcbsrv\HPCHEM1\ECD\_D\Data\PD110725\  
 Data File : PD091018.D  
 Signal(s) : Signal #1: ECD1A.ch Signal #2: ECD2B.ch  
 Acq On : 07 Nov 2025 10:26  
 Operator : AR\AJ  
 Sample : PB170426BL  
 Misc :  
 ALS Vial : 5 Sample Multiplier: 1

Instrument :  
 ECD\_D  
 ClientSampleId :

Integration File signal 1: autoint1.e  
 Integration File signal 2: autoint2.e  
 Quant Time: Nov 08 02:41:59 2025  
 Quant Method : Z:\pestpcbsrv\HPCHEM1\ECD\_D\Method\PD101725.M  
 Quant Title : GC Extractables  
 QLast Update : Fri Oct 17 17:43:28 2025  
 Response via : Initial Calibration  
 Integrator: ChemStation

Volume Inj. : 1 µl  
 Signal #1 Phase : ZB-MR2 Signal #2 Phase: ZB-MR2  
 Signal #1 Info : 30M x 0.32mm x0.5 Signal #2 Info : 30M x 0.32mm x 0.25µm

Compound	RT#1	RT#2	Resp#1	Resp#2	ng/ml	ng/ml
-----						
System Monitoring Compounds						
1) SA Tetrachlo...	3.547	2.874	53204634	567.8E6	17.085	19.069
28) SA Decachlor...	9.067	8.060	85618181	621.0E6	18.302	20.500
Target Compounds						
2) A alpha-BHC	3.996	3.384	413720	4877810	0.058	0.095 #
3) MA gamma-BHC...	4.327	3.722	305098	4731898	0.045	0.100 #
4) MA Heptachlor	4.926	4.075	1999557	4040194	0.358	0.091 #
5) MB Aldrin	5.265	4.357	401264	4771581	0.061	0.103 #
6) B beta-BHC	4.516	4.019	925020	7282257	0.353	0.367
7) B delta-BHC	4.773	4.254	6193206	13639310	0.916	0.286 #
8) B Heptachlo...	5.678	4.863	5007730	3485366	0.865	0.082 #
9) A Endosulfan I	6.068	0.000	1075708	0	0.194	N.D. #
10) B gamma-Chl...	5.942	5.116	801169	9298570	0.135	0.207 #
11) B alpha-Chl...	5.998f	5.181	8261885	37662822	1.337	0.873 #
12) B 4,4'-DDE	6.190	5.366	251888	12564057	0.047	0.287 #
13) MA Dieldrin	6.342	5.499	426193	6067132	0.073	0.137 #
14) MA Endrin	6.569	5.785	278112	42591376	0.056	1.052 #
15) B Endosulfa...	6.773	6.070	6148446	7828860	1.230	0.208 #
16) A 4,4'-DDD	6.699	5.920	5132391	4177261	1.266	0.115 #
17) MA 4,4'-DDT	7.013	6.176	950583	2515339	0.231	0.072 #
18) B Endrin al...	6.913	6.247	5290590	14459591	1.444	0.522 #
19) B Endosulfa...	7.146	6.472	865676	7279081	0.187	0.203
20) A Methoxychlor	7.492	6.741	567669	2954647	0.267	0.170 #
21) B Endrin ke...	7.627	0.000	1164535	0	0.240	N.D. #
22) Mirex	8.116	7.169	-15119	5431600	N.D.	0.211
23) Chlordane-1	0.000	3.878f	0	1105608	N.D.	0.887 #
24) Chlordane-2	5.265f	4.484	401264	27931783	2.078	21.412 #
25) Chlordane-3	5.942	5.116	801169	9298570	1.050	2.389 #
26) Chlordane-4	5.998f	5.181	8261885	37662822	8.527	11.272 #
27) Chlordane-5	0.000	6.070	0	7828860	N.D.	5.304 #

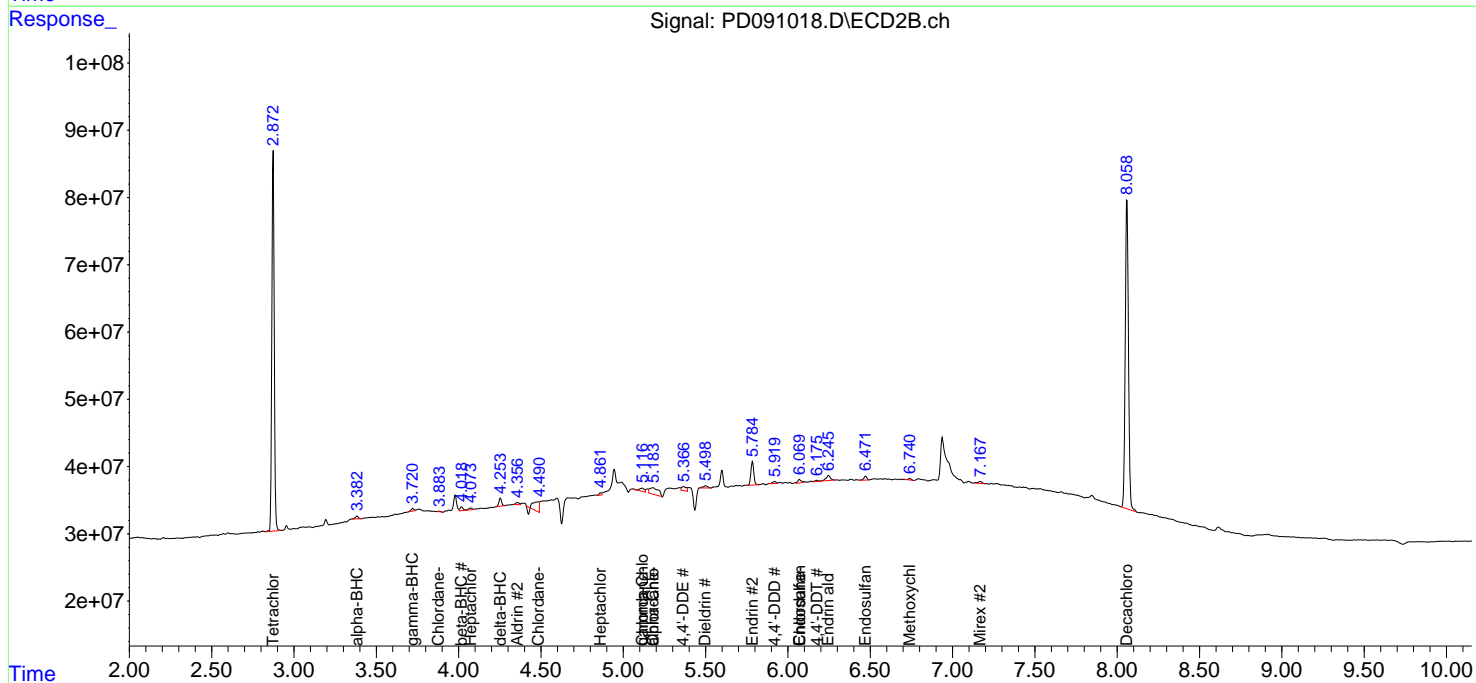
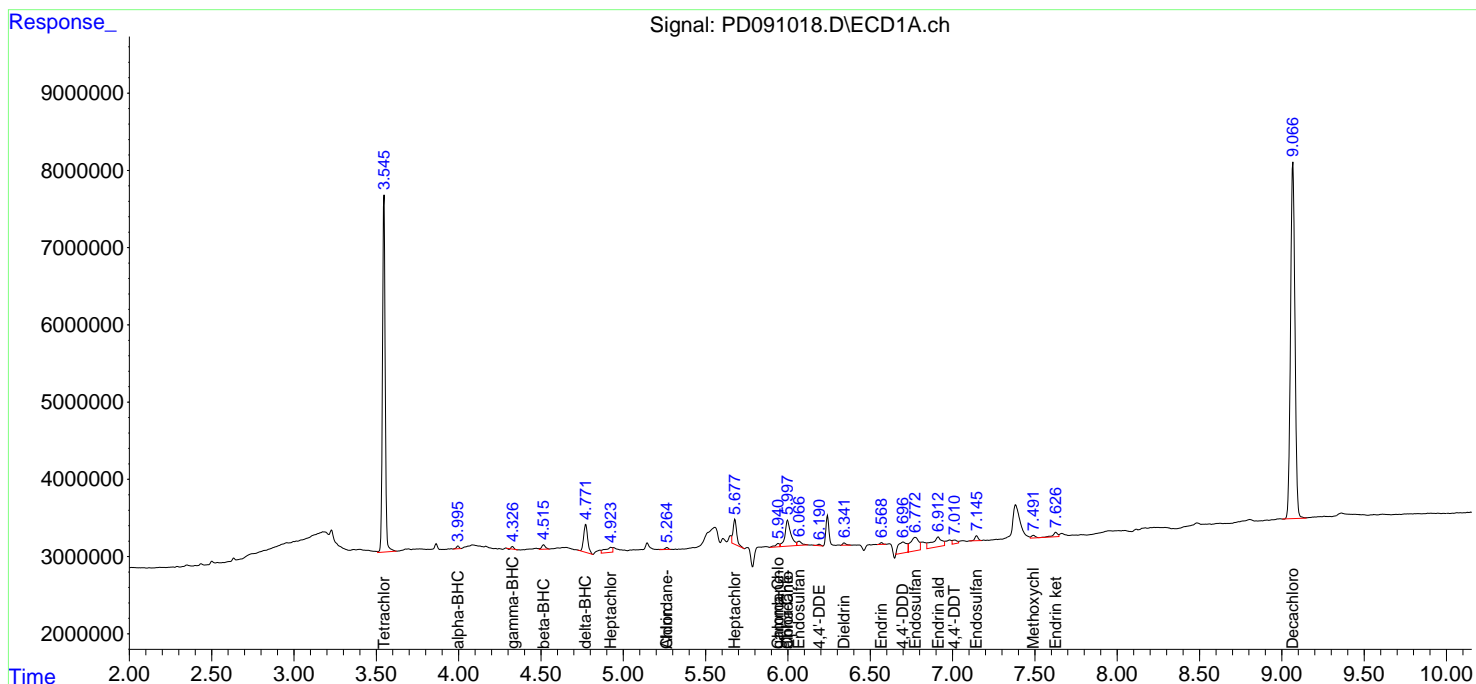
(f)=RT Delta > 1/2 Window (#)=Amounts differ by > 25% (m)=manual int.

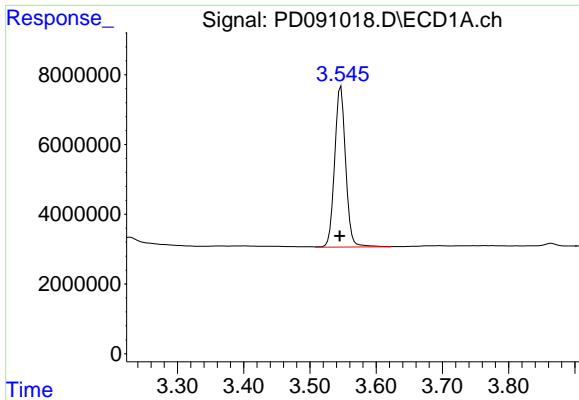
Data Path : Z:\pestpcbsrv\HPCHEM1\ECD\_D\Data\PD110725\  
 Data File : PD091018.D  
 Signal(s) : Signal #1: ECD1A.ch Signal #2: ECD2B.ch  
 Acq On : 07 Nov 2025 10:26  
 Operator : AR\AJ  
 Sample : PB170426BL  
 Misc :  
 ALS Vial : 5 Sample Multiplier: 1

Instrument :  
 ECD\_D  
 ClientSampleId :

Integration File signal 1: autoint1.e  
 Integration File signal 2: autoint2.e  
 Quant Time: Nov 08 02:41:59 2025  
 Quant Method : Z:\pestpcbsrv\HPCHEM1\ECD\_D\Method\PD101725.M  
 Quant Title : GC Extractables  
 QLast Update : Fri Oct 17 17:43:28 2025  
 Response via : Initial Calibration  
 Integrator: ChemStation

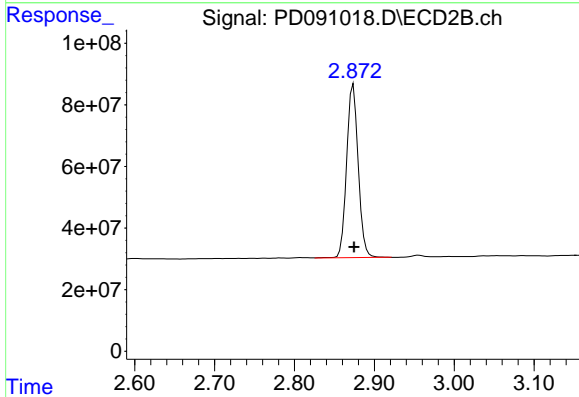
Volume Inj. : 1 µl  
 Signal #1 Phase : ZB-MR1 Signal #2 Phase: ZB-MR2  
 Signal #1 Info : 30M x 0.32mm x0.5 Signal #2 Info : 30M x 0.32mm x 0.25µm



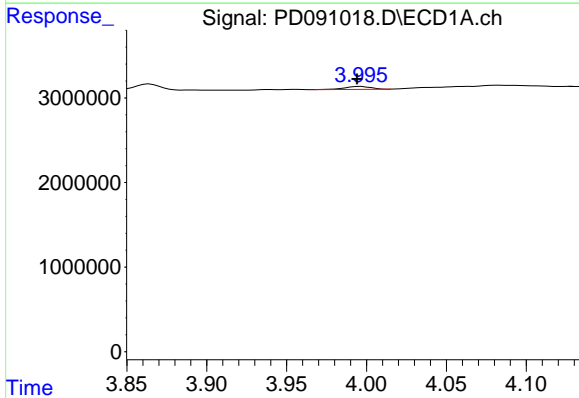


#1 Tetrachloro-m-xylene  
 R.T.: 3.547 min  
 Delta R.T.: 0.002 min  
 Response: 53204634  
 Conc: 17.08 ng/ml

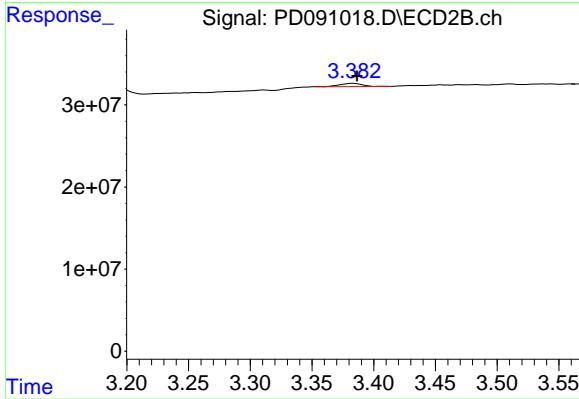
Instrument :  
 ECD\_D  
 ClientSampleId :



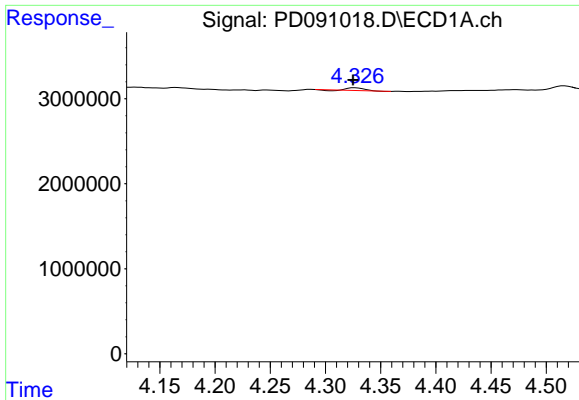
#1 Tetrachloro-m-xylene  
 R.T.: 2.874 min  
 Delta R.T.: -0.001 min  
 Response: 567814892  
 Conc: 19.07 ng/ml



#2 alpha-BHC  
 R.T.: 3.996 min  
 Delta R.T.: 0.002 min  
 Response: 413720  
 Conc: 0.06 ng/ml

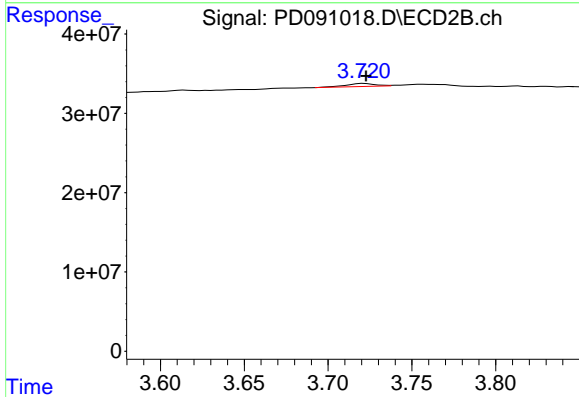


#2 alpha-BHC  
 R.T.: 3.384 min  
 Delta R.T.: -0.003 min  
 Response: 4877810  
 Conc: 0.10 ng/ml

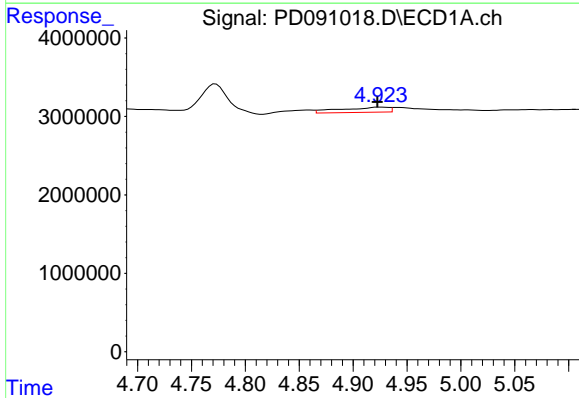


#3 gamma-BHC (Lindane)  
 R.T.: 4.327 min  
 Delta R.T.: 0.002 min  
 Response: 305098  
 Conc: 0.04 ng/ml

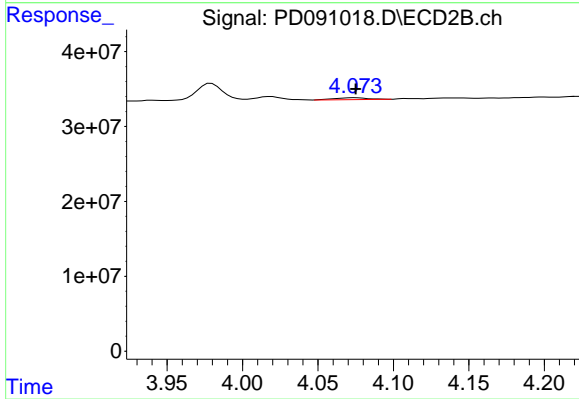
Instrument :  
 ECD\_D  
 ClientSampleId :



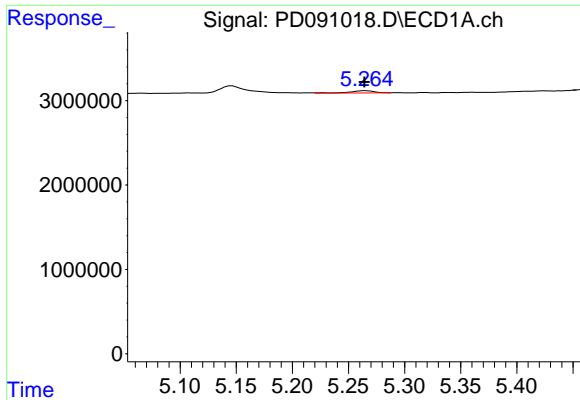
#3 gamma-BHC (Lindane)  
 R.T.: 3.722 min  
 Delta R.T.: 0.000 min  
 Response: 4731898  
 Conc: 0.10 ng/ml



#4 Heptachlor  
 R.T.: 4.926 min  
 Delta R.T.: 0.003 min  
 Response: 1999557  
 Conc: 0.36 ng/ml

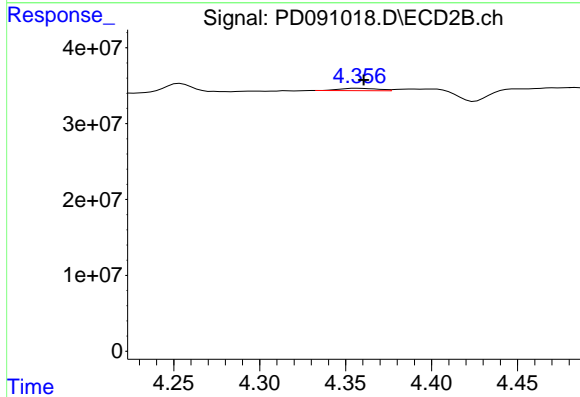


#4 Heptachlor  
 R.T.: 4.075 min  
 Delta R.T.: 0.000 min  
 Response: 4040194  
 Conc: 0.09 ng/ml

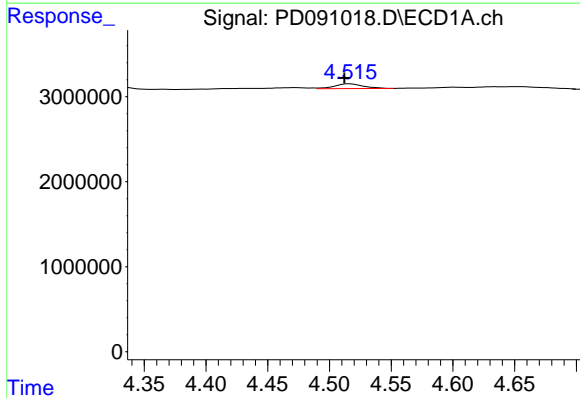


#5 Aldrin  
 R.T.: 5.265 min  
 Delta R.T.: 0.001 min  
 Response: 401264  
 Conc: 0.06 ng/ml

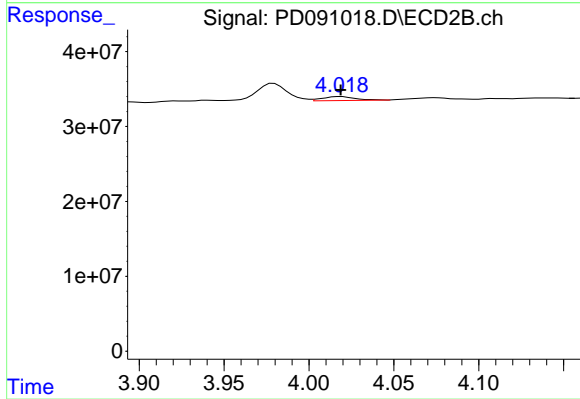
Instrument :  
 ECD\_D  
 ClientSampleId :



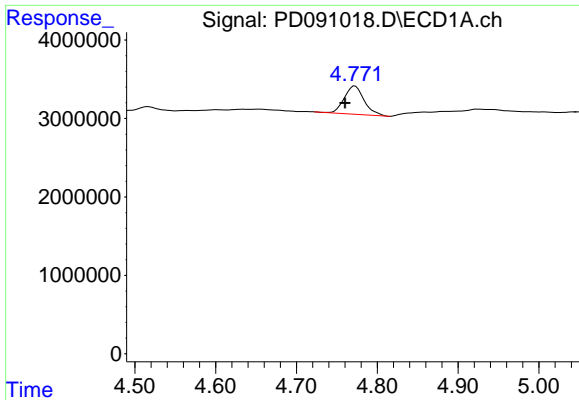
#5 Aldrin  
 R.T.: 4.357 min  
 Delta R.T.: -0.003 min  
 Response: 4771581  
 Conc: 0.10 ng/ml



#6 beta-BHC  
 R.T.: 4.516 min  
 Delta R.T.: 0.004 min  
 Response: 925020  
 Conc: 0.35 ng/ml



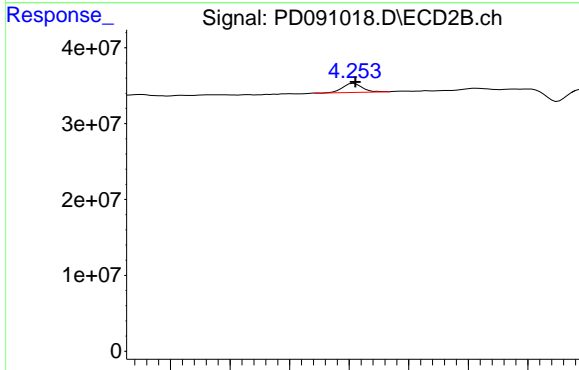
#6 beta-BHC  
 R.T.: 4.019 min  
 Delta R.T.: 0.000 min  
 Response: 7282257  
 Conc: 0.37 ng/ml



#7 delta-BHC

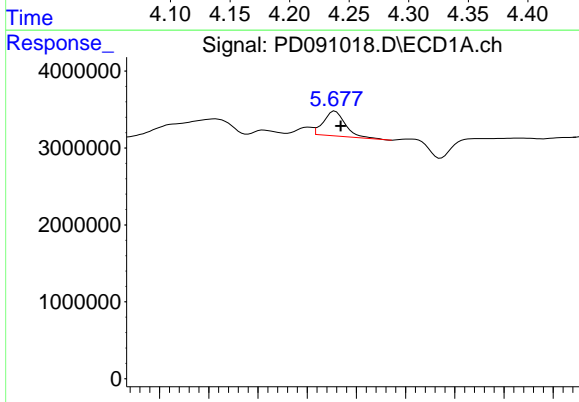
R.T.: 4.773 min  
 Delta R.T.: 0.012 min  
 Response: 6193206  
 Conc: 0.92 ng/ml

Instrument :  
 ECD\_D  
 ClientSampleId :



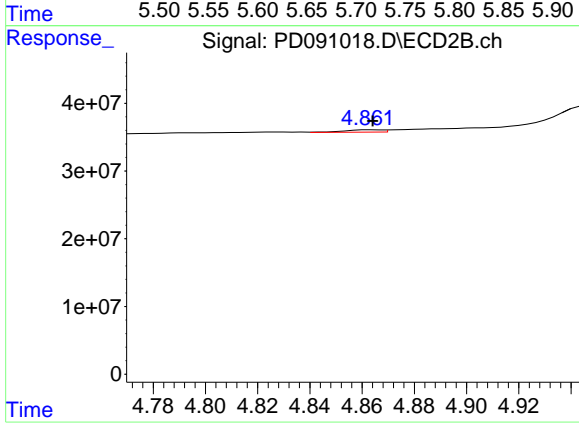
#7 delta-BHC

R.T.: 4.254 min  
 Delta R.T.: -0.001 min  
 Response: 13639310  
 Conc: 0.29 ng/ml



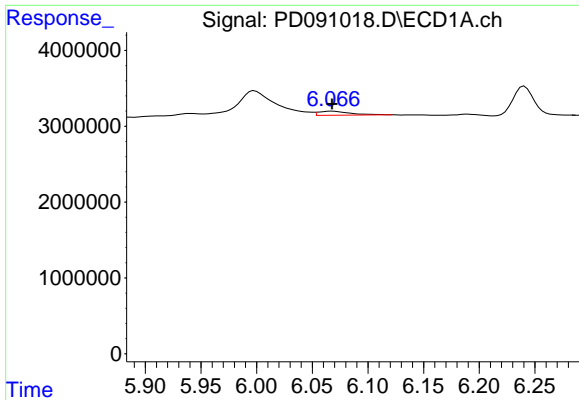
#8 Heptachlor epoxide

R.T.: 5.678 min  
 Delta R.T.: -0.006 min  
 Response: 5007730  
 Conc: 0.87 ng/ml



#8 Heptachlor epoxide

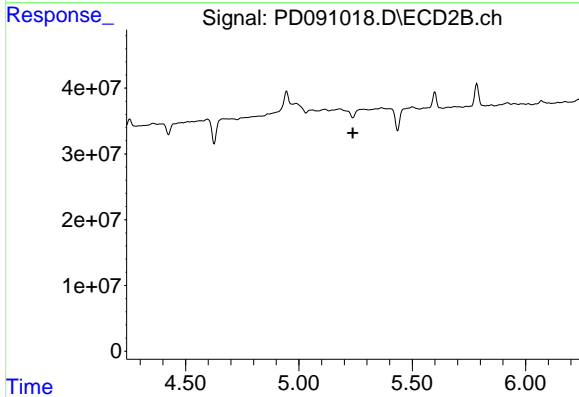
R.T.: 4.863 min  
 Delta R.T.: -0.001 min  
 Response: 3485366  
 Conc: 0.08 ng/ml



#9 Endosulfan I

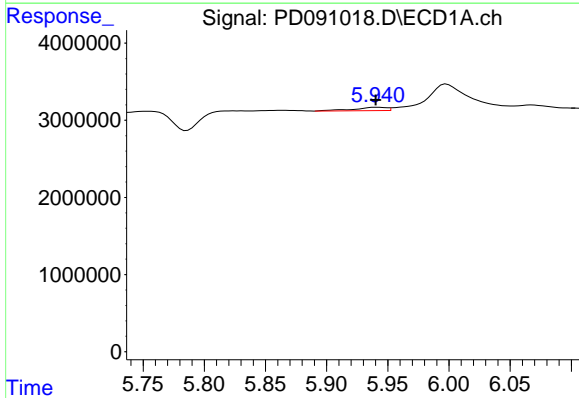
R.T.: 6.068 min  
 Delta R.T.: 0.000 min  
 Response: 1075708  
 Conc: 0.19 ng/ml

Instrument :  
 ECD\_D  
 ClientSampleId :



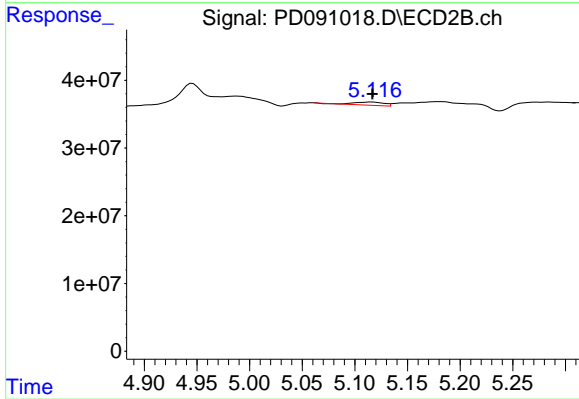
#9 Endosulfan I

R.T.: 0.000 min  
 Exp R.T. : 5.238 min  
 Response: 0  
 Conc: N.D.



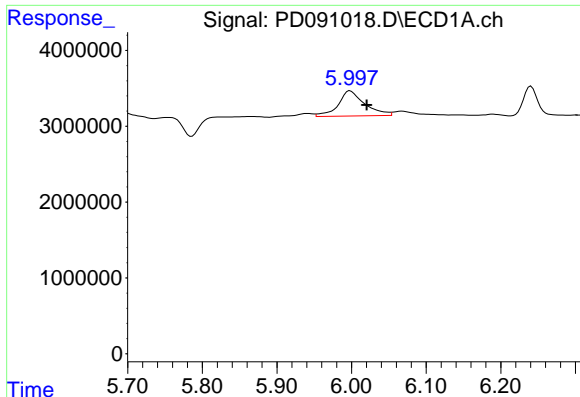
#10 gamma-Chlordane

R.T.: 5.942 min  
 Delta R.T.: 0.002 min  
 Response: 801169  
 Conc: 0.14 ng/ml



#10 gamma-Chlordane

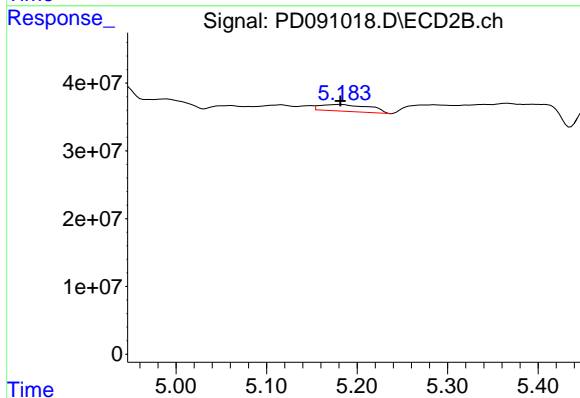
R.T.: 5.116 min  
 Delta R.T.: 0.000 min  
 Response: 9298570  
 Conc: 0.21 ng/ml



#11 alpha-Chlordane

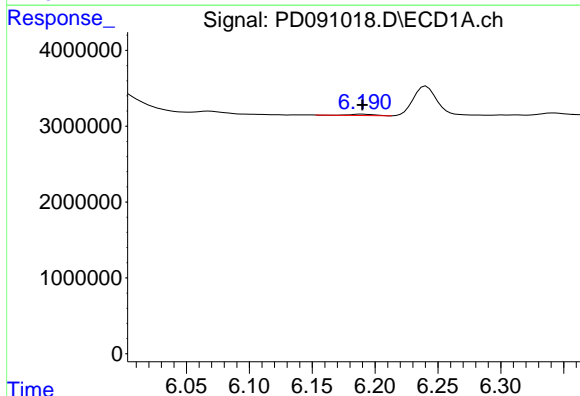
R.T.: 5.998 min  
 Delta R.T.: -0.022 min  
 Response: 8261885  
 Conc: 1.34 ng/ml

Instrument :  
 ECD\_D  
 ClientSampleId :



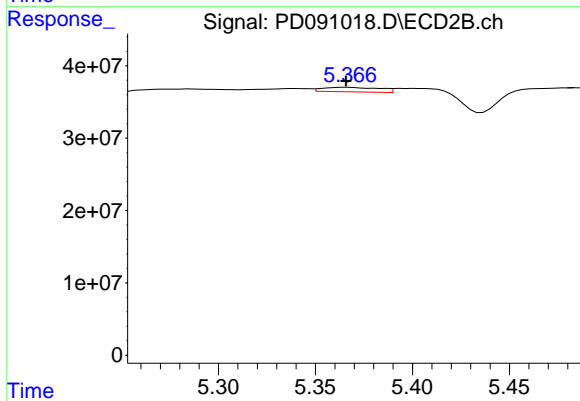
#11 alpha-Chlordane

R.T.: 5.181 min  
 Delta R.T.: 0.000 min  
 Response: 37662822  
 Conc: 0.87 ng/ml



#12 4,4'-DDE

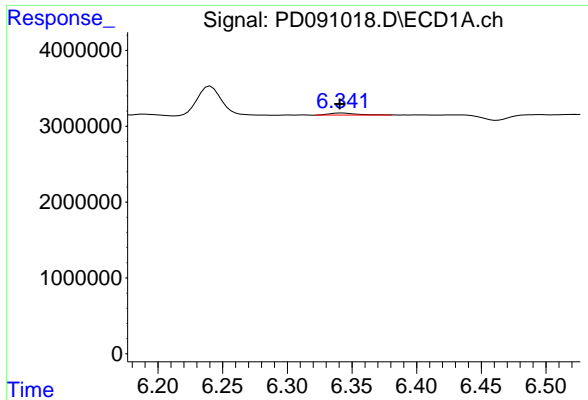
R.T.: 6.190 min  
 Delta R.T.: 0.000 min  
 Response: 251888  
 Conc: 0.05 ng/ml



#12 4,4'-DDE

R.T.: 5.366 min  
 Delta R.T.: 0.000 min  
 Response: 12564057  
 Conc: 0.29 ng/ml

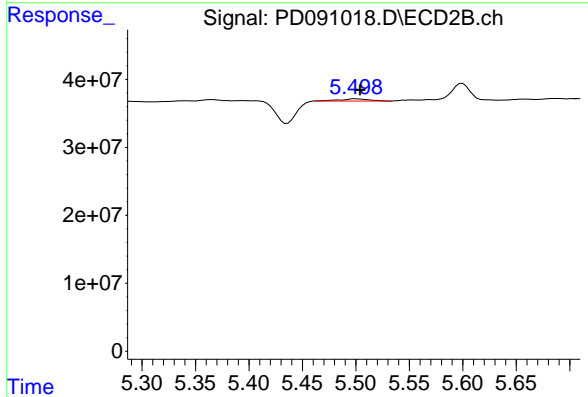




#13 Dieldrin

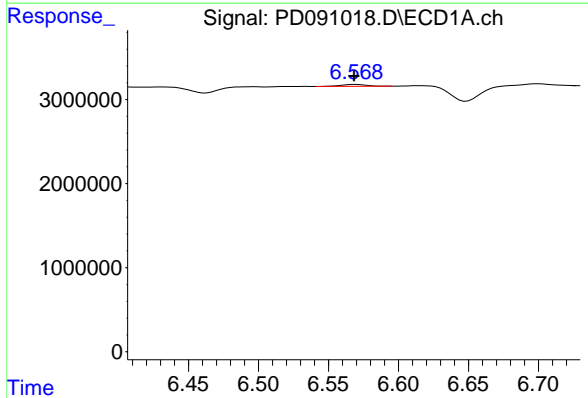
R.T.: 6.342 min  
 Delta R.T.: 0.002 min  
 Response: 426193  
 Conc: 0.07 ng/ml

Instrument :  
 ECD\_D  
 ClientSampleId :



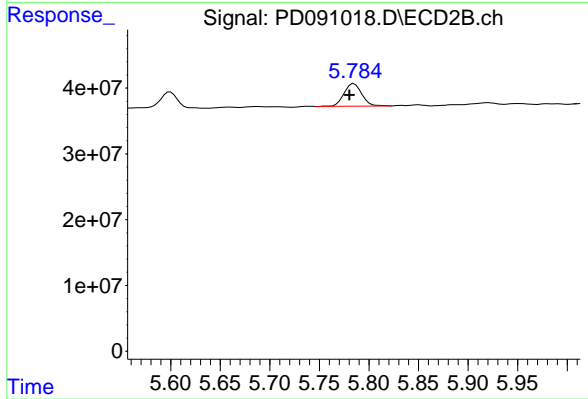
#13 Dieldrin

R.T.: 5.499 min  
 Delta R.T.: -0.004 min  
 Response: 6067132  
 Conc: 0.14 ng/ml



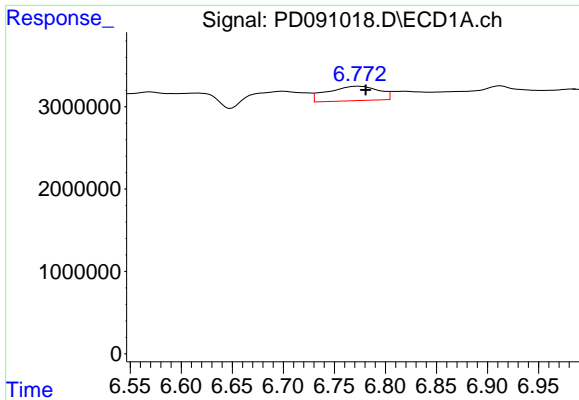
#14 Endrin

R.T.: 6.569 min  
 Delta R.T.: 0.001 min  
 Response: 278112  
 Conc: 0.06 ng/ml



#14 Endrin

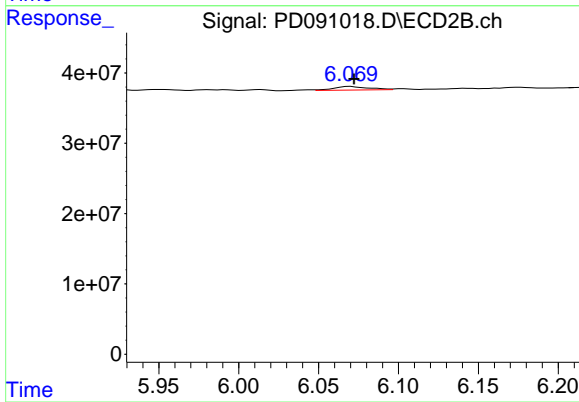
R.T.: 5.785 min  
 Delta R.T.: 0.004 min  
 Response: 42591376  
 Conc: 1.05 ng/ml



#15 Endosulfan II

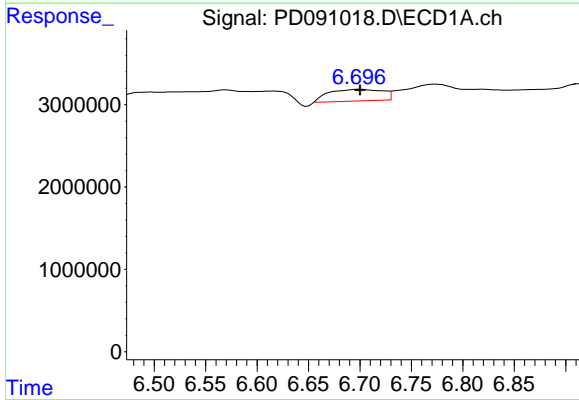
R.T.: 6.773 min  
 Delta R.T.: -0.007 min  
 Response: 6148446  
 Conc: 1.23 ng/ml

Instrument :  
 ECD\_D  
 ClientSampleId :



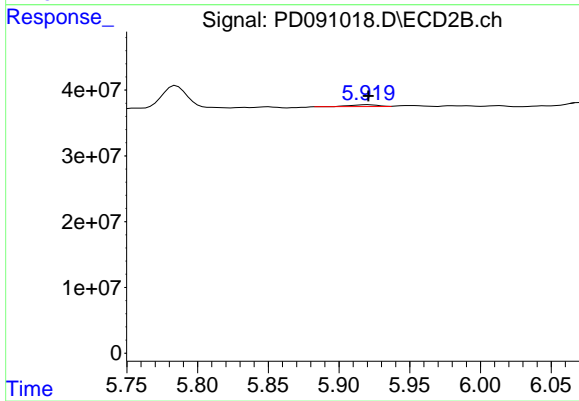
#15 Endosulfan II

R.T.: 6.070 min  
 Delta R.T.: -0.002 min  
 Response: 7828860  
 Conc: 0.21 ng/ml



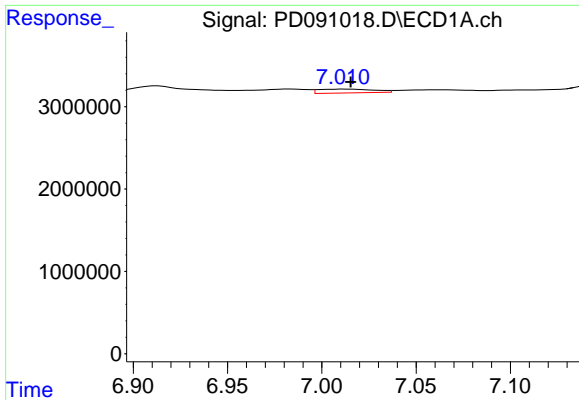
#16 4,4'-DDD

R.T.: 6.699 min  
 Delta R.T.: 0.000 min  
 Response: 5132391  
 Conc: 1.27 ng/ml



#16 4,4'-DDD

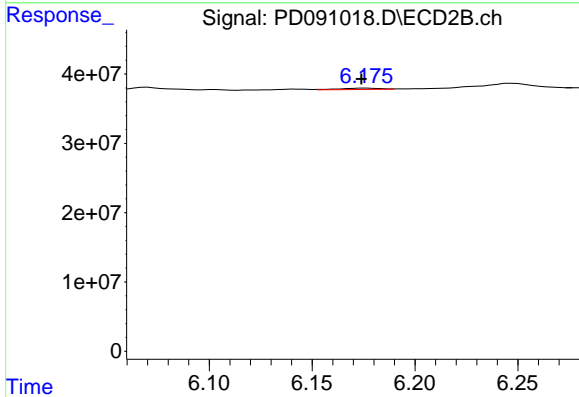
R.T.: 5.920 min  
 Delta R.T.: 0.000 min  
 Response: 4177261  
 Conc: 0.11 ng/ml



#17 4,4'-DDT

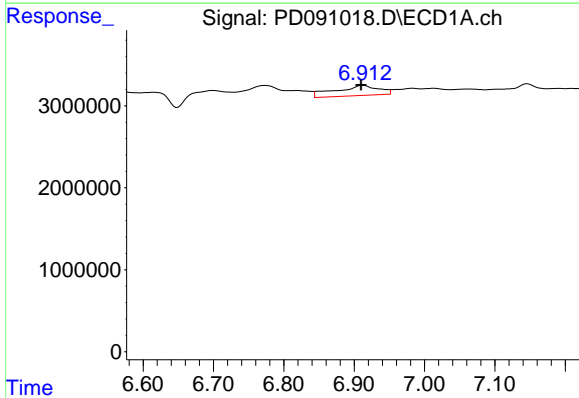
R.T.: 7.013 min  
 Delta R.T.: -0.002 min  
 Response: 950583  
 Conc: 0.23 ng/ml

Instrument :  
 ECD\_D  
 ClientSampleId :



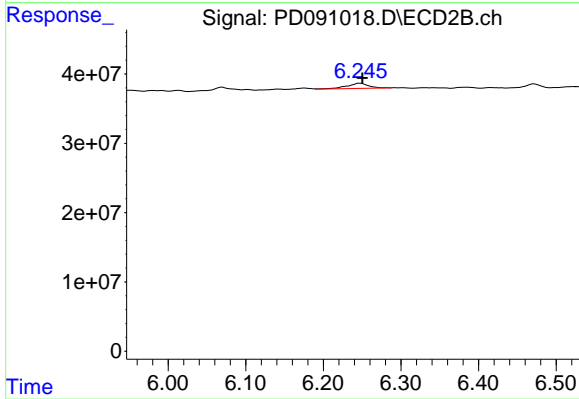
#17 4,4'-DDT

R.T.: 6.176 min  
 Delta R.T.: 0.002 min  
 Response: 2515339  
 Conc: 0.07 ng/ml



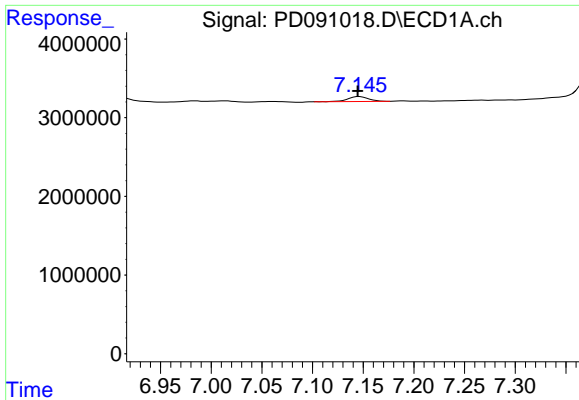
#18 Endrin aldehyde

R.T.: 6.913 min  
 Delta R.T.: 0.003 min  
 Response: 5290590  
 Conc: 1.44 ng/ml



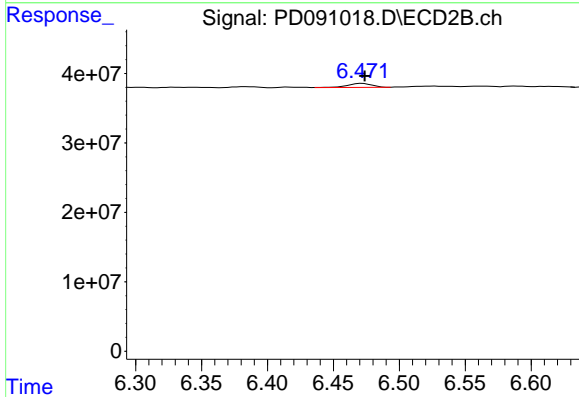
#18 Endrin aldehyde

R.T.: 6.247 min  
 Delta R.T.: -0.003 min  
 Response: 14459591  
 Conc: 0.52 ng/ml

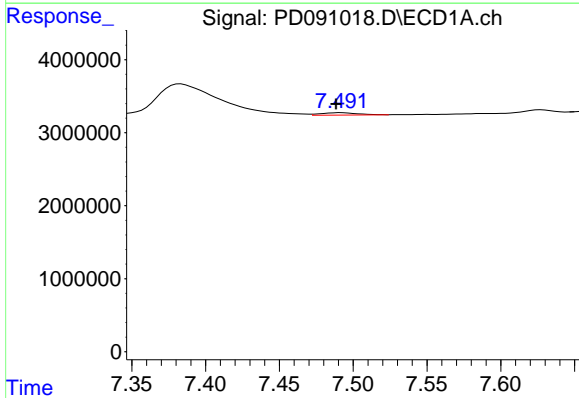


#19 Endosulfan Sulfate  
 R.T.: 7.146 min  
 Delta R.T.: 0.001 min  
 Response: 865676  
 Conc: 0.19 ng/ml

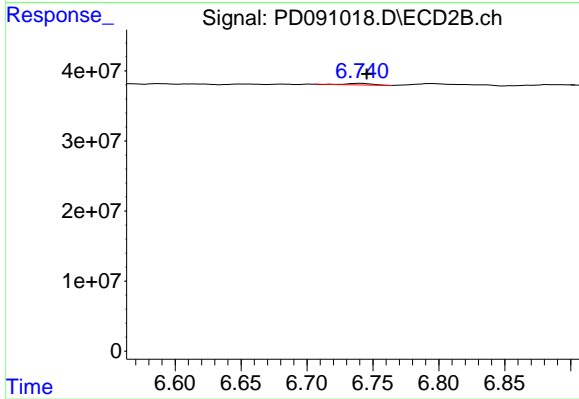
Instrument :  
 ECD\_D  
 ClientSampleId :



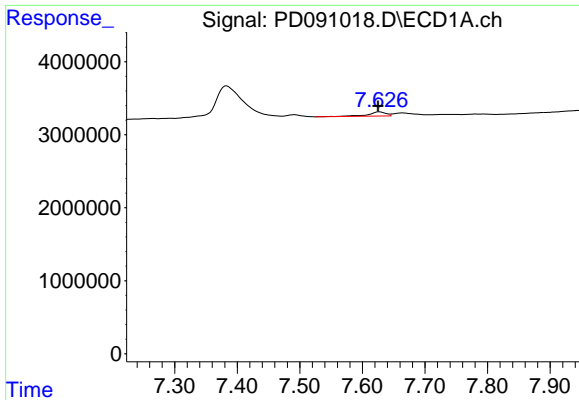
#19 Endosulfan Sulfate  
 R.T.: 6.472 min  
 Delta R.T.: -0.002 min  
 Response: 7279081  
 Conc: 0.20 ng/ml



#20 Methoxychlor  
 R.T.: 7.492 min  
 Delta R.T.: 0.004 min  
 Response: 567669  
 Conc: 0.27 ng/ml



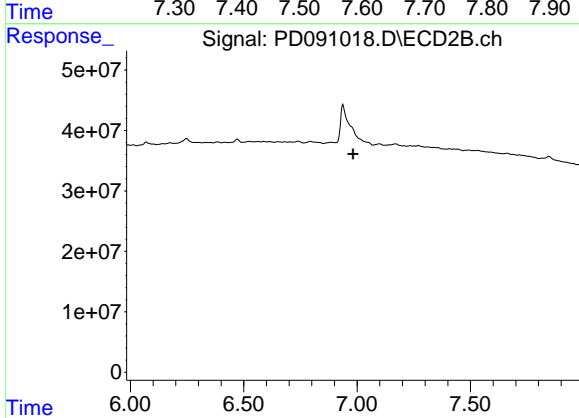
#20 Methoxychlor  
 R.T.: 6.741 min  
 Delta R.T.: -0.004 min  
 Response: 2954647  
 Conc: 0.17 ng/ml



#21 Endrin ketone

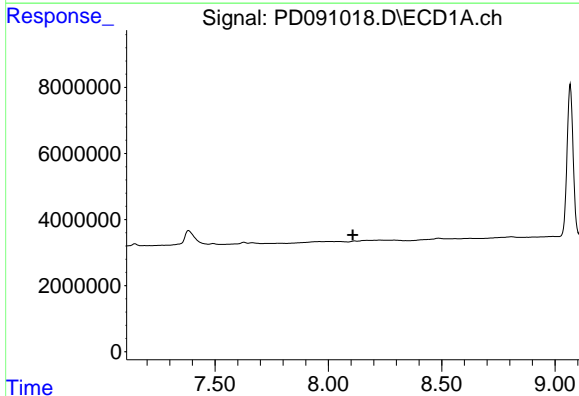
R.T.: 7.627 min  
 Delta R.T.: 0.002 min  
 Response: 1164535  
 Conc: 0.24 ng/ml

Instrument :  
 ECD\_D  
 ClientSampleId :



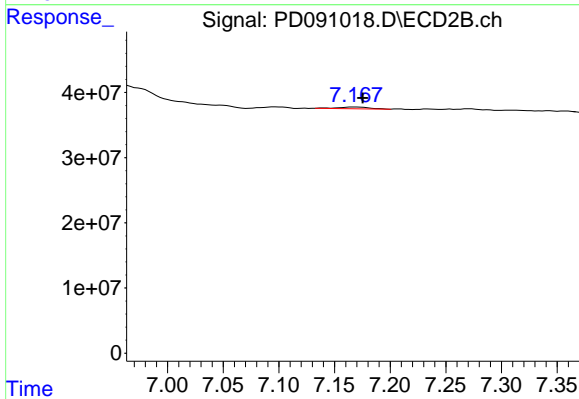
#21 Endrin ketone

R.T.: 0.000 min  
 Exp R.T. : 6.983 min  
 Response: 0  
 Conc: N.D.



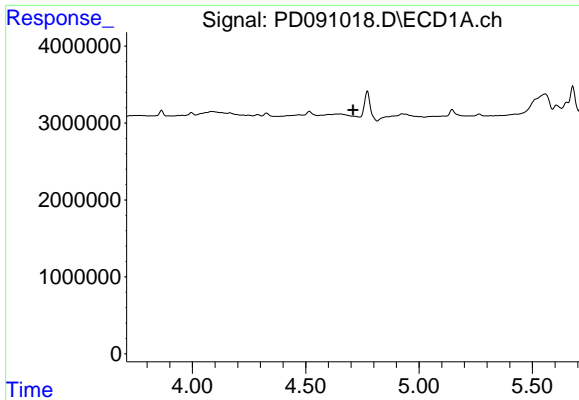
#22 Mirex

R.T.: 8.116 min  
 Delta R.T.: 0.009 min  
 Response: -15119  
 Conc: N.D.



#22 Mirex

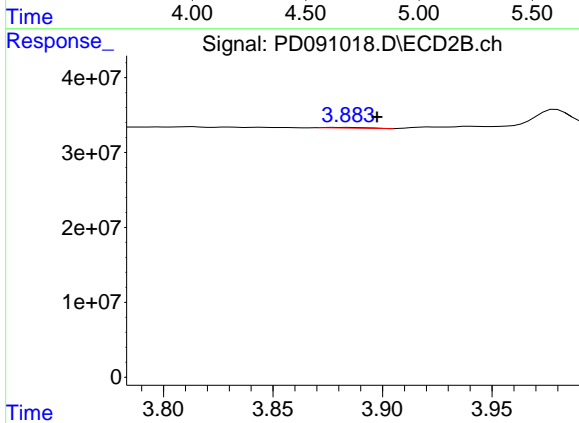
R.T.: 7.169 min  
 Delta R.T.: -0.006 min  
 Response: 5431600  
 Conc: 0.21 ng/ml



#23 Chlordane-1

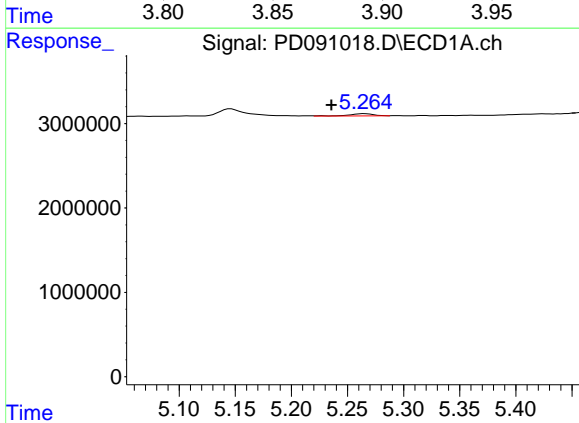
R.T.: 0.000 min  
 Exp R.T.: 4.709 min  
 Response: 0  
 Conc: N.D.

Instrument :  
 ECD\_D  
 ClientSampleId :



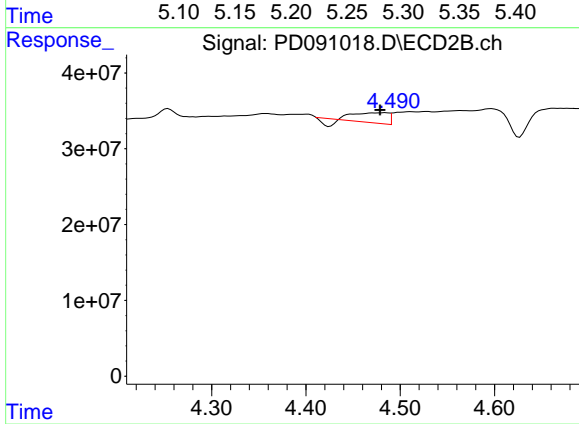
#23 Chlordane-1

R.T.: 3.878 min  
 Delta R.T.: -0.019 min  
 Response: 1105608  
 Conc: 0.89 ng/ml



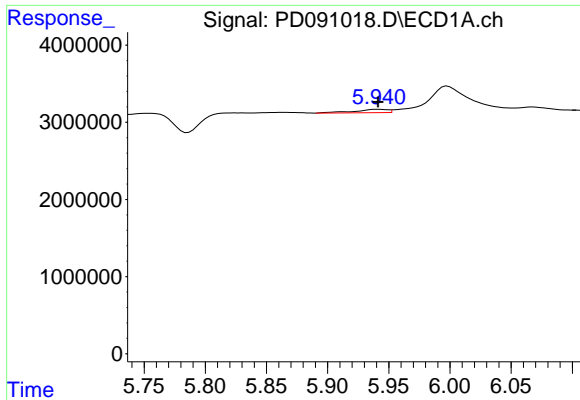
#24 Chlordane-2

R.T.: 5.265 min  
 Delta R.T.: 0.030 min  
 Response: 401264  
 Conc: 2.08 ng/ml



#24 Chlordane-2

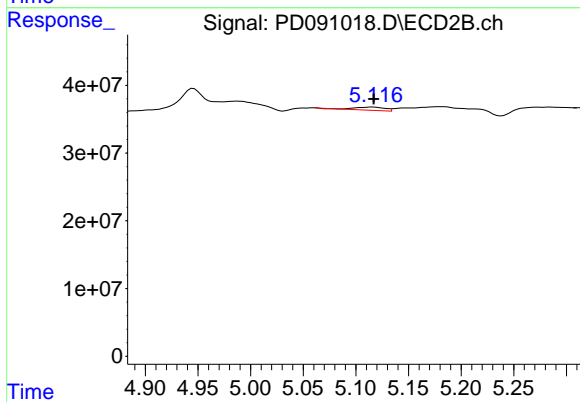
R.T.: 4.484 min  
 Delta R.T.: 0.005 min  
 Response: 27931783  
 Conc: 21.41 ng/ml



#25 Chlordane-3

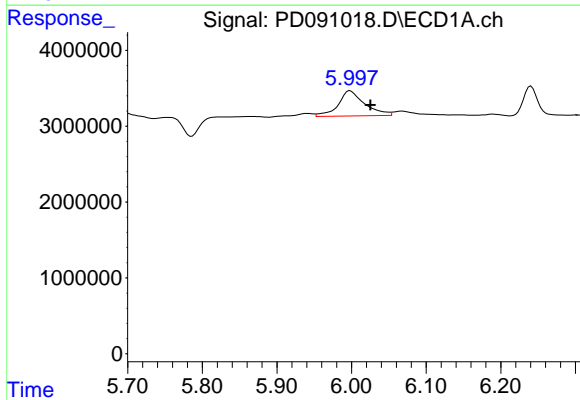
R.T.: 5.942 min  
 Delta R.T.: 0.000 min  
 Response: 801169  
 Conc: 1.05 ng/ml

Instrument :  
 ECD\_D  
 ClientSampleId :



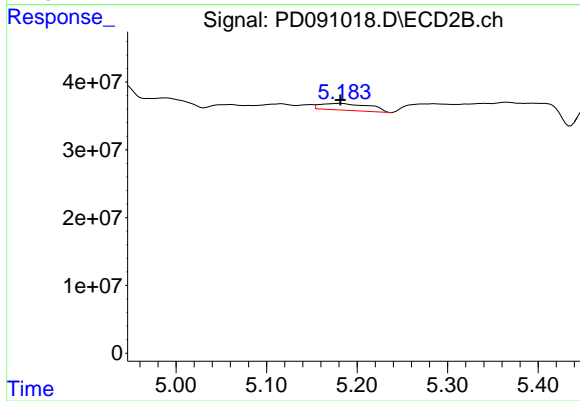
#25 Chlordane-3

R.T.: 5.116 min  
 Delta R.T.: 0.000 min  
 Response: 9298570  
 Conc: 2.39 ng/ml



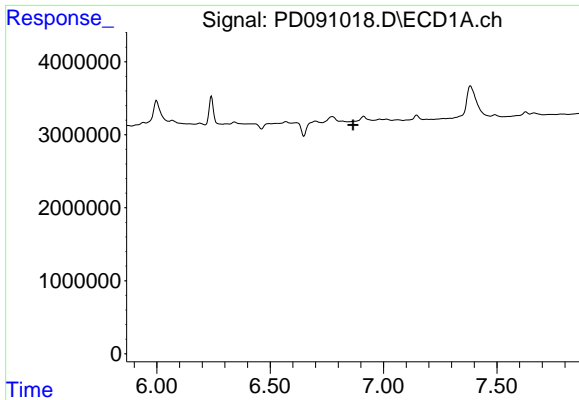
#26 Chlordane-4

R.T.: 5.998 min  
 Delta R.T.: -0.027 min  
 Response: 8261885  
 Conc: 8.53 ng/ml



#26 Chlordane-4

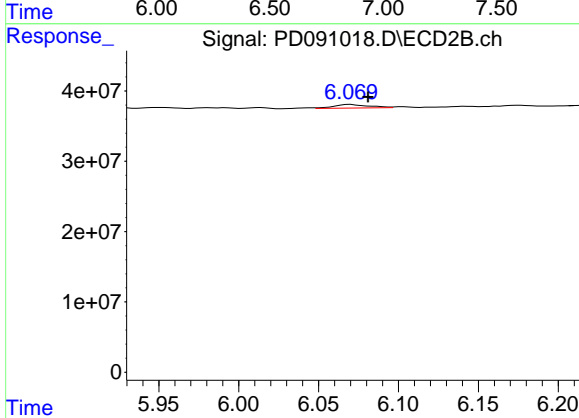
R.T.: 5.181 min  
 Delta R.T.: -0.001 min  
 Response: 37662822  
 Conc: 11.27 ng/ml



#27 Chlordane-5

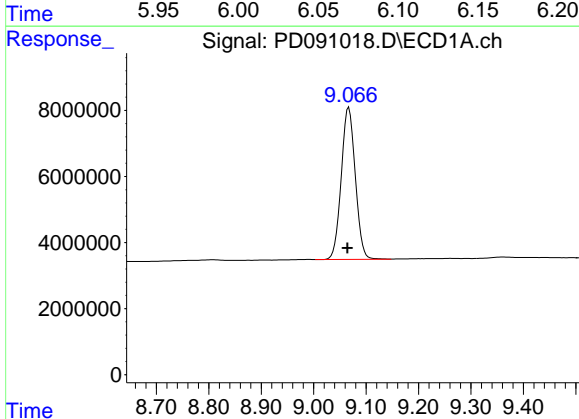
R.T.: 0.000 min  
 Exp R.T.: 6.866 min  
 Response: 0  
 Conc: N.D.

Instrument :  
 ECD\_D  
 ClientSampleId :



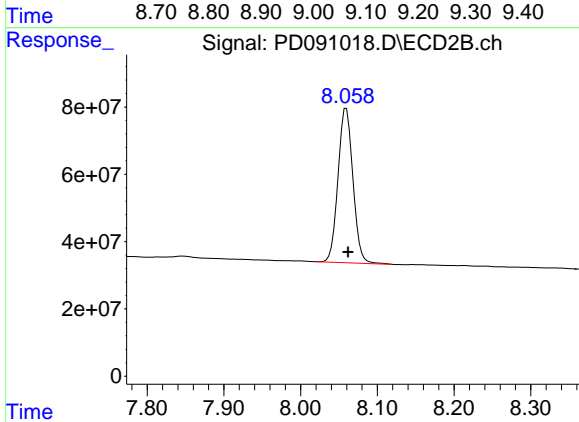
#27 Chlordane-5

R.T.: 6.070 min  
 Delta R.T.: -0.011 min  
 Response: 7828860  
 Conc: 5.30 ng/ml



#28 Decachlorobiphenyl

R.T.: 9.067 min  
 Delta R.T.: 0.003 min  
 Response: 85618181  
 Conc: 18.30 ng/ml



#28 Decachlorobiphenyl

R.T.: 8.060 min  
 Delta R.T.: -0.002 min  
 Response: 620987224  
 Conc: 20.50 ng/ml