

Data Path : Z:\pestpcbsrv\HPCHEM1\ECD_D\Data\PD110725\
 Data File : PD091019.D
 Signal(s) : Signal #1: ECD1A.ch Signal #2: ECD2B.ch
 Acq On : 07 Nov 2025 10:39
 Operator : AR\AJ
 Sample : Q3534-06
 Misc :
 ALS Vial : 6 Sample Multiplier: 1

Instrument :
 ECD_D
 ClientSampleId :

Integration File signal 1: autoint1.e
 Integration File signal 2: autoint2.e
 Quant Time: Nov 08 02:42:21 2025
 Quant Method : Z:\pestpcbsrv\HPCHEM1\ECD_D\Method\PD101725.M
 Quant Title : GC Extractables
 QLast Update : Fri Oct 17 17:43:28 2025
 Response via : Initial Calibration
 Integrator: ChemStation

Volume Inj. : 1 µl
 Signal #1 Phase : ZB-MR2 Signal #2 Phase: ZB-MR2
 Signal #1 Info : 30M x 0.32mm x0.5 Signal #2 Info : 30M x 0.32mm x 0.25µm

Compound	RT#1	RT#2	Resp#1	Resp#2	ng/ml	ng/ml

System Monitoring Compounds						
1) SA Tetrachlo...	3.544	2.874	62320756	533.5E6	20.012	17.916
28) SA Decachlor...	9.064	8.059	64085230	469.9E6	13.699	15.513
Target Compounds						
2) A alpha-BHC	4.023f	3.398	3898382	-4637004	0.543	N.D. #
3) MA gamma-BHC...	4.335	3.737	921916	-3768463	0.136	N.D. #
4) MA Heptachlor	4.921	4.066	2986968	6189674	0.534	0.139 #
6) B beta-BHC	4.507	4.011	14538321	15145637	5.550	0.764 #
7) B delta-BHC	4.773	4.263	6900503	1120158	1.021	0.023 #
8) B Heptachlo...	5.690	4.865	941608	4542454	0.163	0.107 #
9) A Endosulfan I	6.036f	5.238	5410622	23423104	0.977	0.595 #
10) B gamma-Chl...	5.934	5.104	954670	37465148	0.161	0.834 #
11) B alpha-Chl...	6.036f	5.171	5410622	19163813	0.875	0.444 #
12) B 4,4'-DDE	6.195	5.370	254772	3501637	0.048	0.080 #
14) MA Endrin	0.000	5.796f	0	208.2E6	N.D.	5.141 #
15) B Endosulfa...	6.775	6.049f	1400962	2584447	0.280	0.069 #
16) A 4,4'-DDD	6.712	0.000	483497	0	0.119	N.D. #
17) MA 4,4'-DDT	7.015	6.165	585651	10800261	0.142	0.308 #
18) B Endrin al...	6.896	6.242	1473499	9102973	0.402	0.329
19) B Endosulfa...	7.137	6.466	478916	4030237	0.103	0.112
20) A Methoxychlor	7.482	6.742	1308760	133.9E6	0.616	7.682 #
21) B Endrin ke...	7.613	0.000	1534316	0	0.316	N.D. #
23) Chlordane-1	4.710	3.887	889249	11802688	4.706	9.470 #
24) Chlordane-2	5.236	4.479	2840471	6201823	14.708	4.754 #
25) Chlordane-3	5.934	5.104	954670	37465148	1.252	9.627 #
26) Chlordane-4	6.036	5.171	5410622	19163813	5.584	5.736
27) Chlordane-5	6.862	6.098	2668421	10724556	17.759	7.266 #

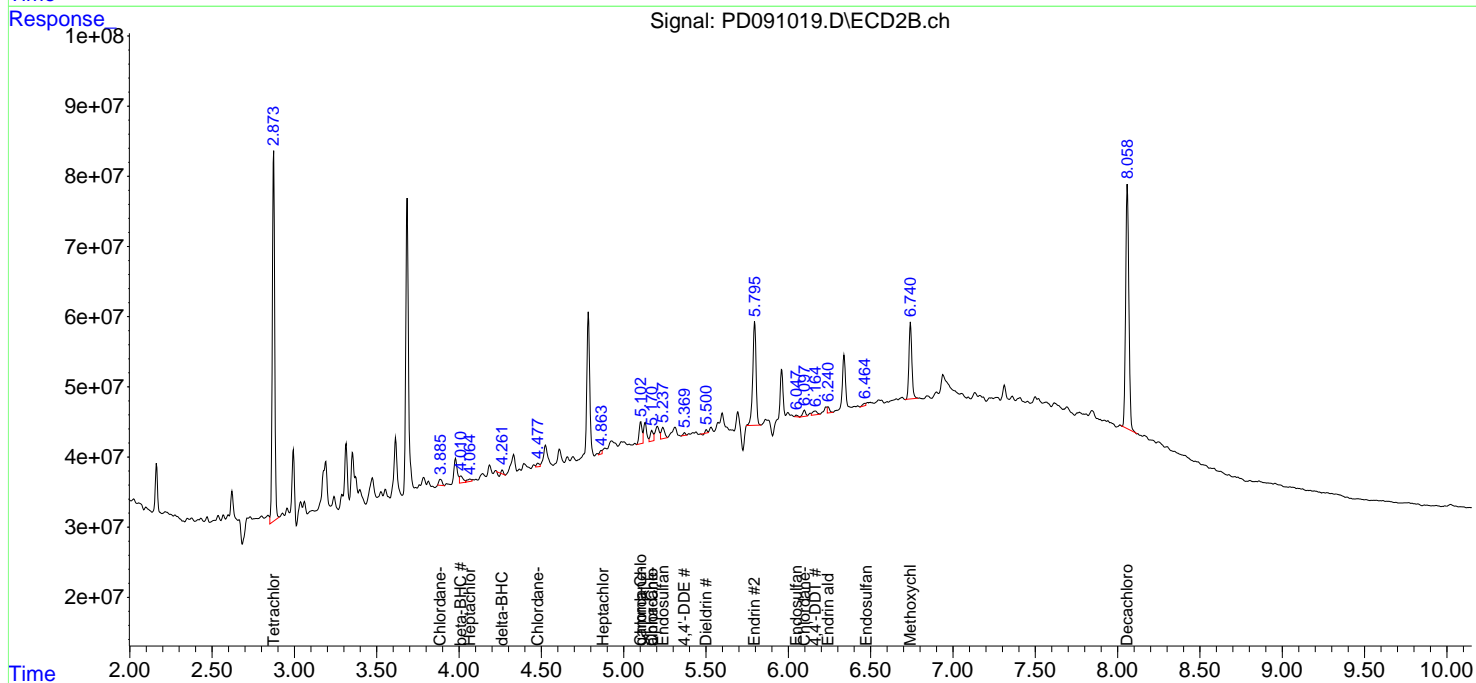
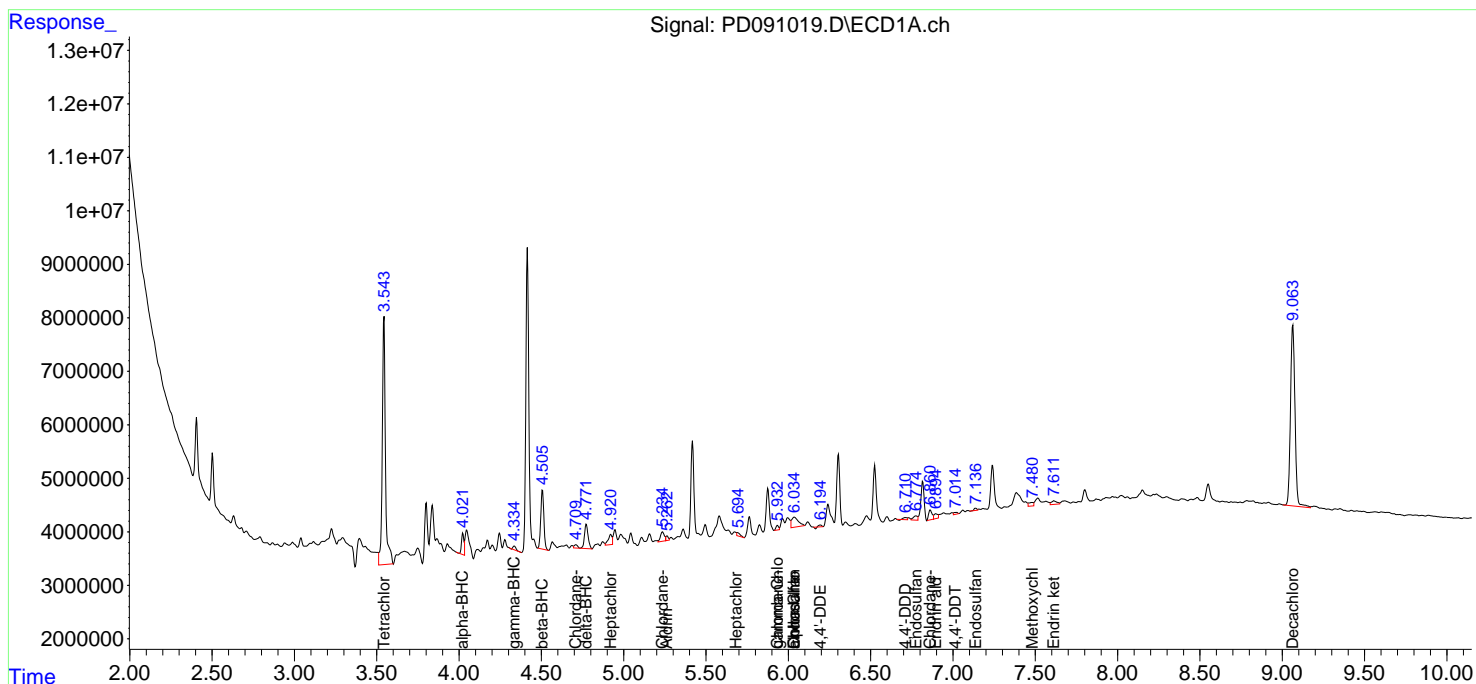
(f)=RT Delta > 1/2 Window (#)=Amounts differ by > 25% (m)=manual int.

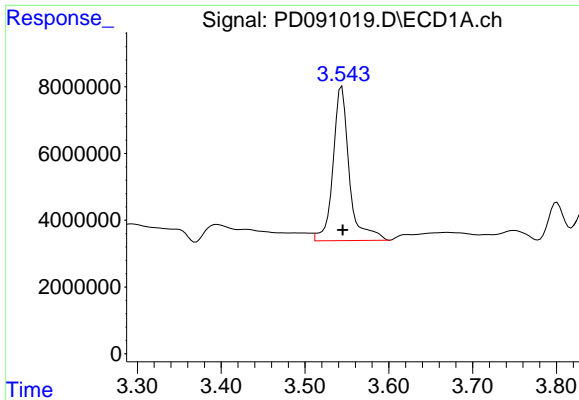
Data Path : Z:\pestpcbsrv\HPCHEM1\ECD_D\Data\PD110725\
 Data File : PD091019.D
 Signal(s) : Signal #1: ECD1A.ch Signal #2: ECD2B.ch
 Acq On : 07 Nov 2025 10:39
 Operator : AR\AJ
 Sample : Q3534-06
 Misc :
 ALS Vial : 6 Sample Multiplier: 1

Instrument :
 ECD_D
 ClientSampleId :

Integration File signal 1: autoint1.e
 Integration File signal 2: autoint2.e
 Quant Time: Nov 08 02:42:21 2025
 Quant Method : Z:\pestpcbsrv\HPCHEM1\ECD_D\Method\PD101725.M
 Quant Title : GC Extractables
 QLast Update : Fri Oct 17 17:43:28 2025
 Response via : Initial Calibration
 Integrator: ChemStation

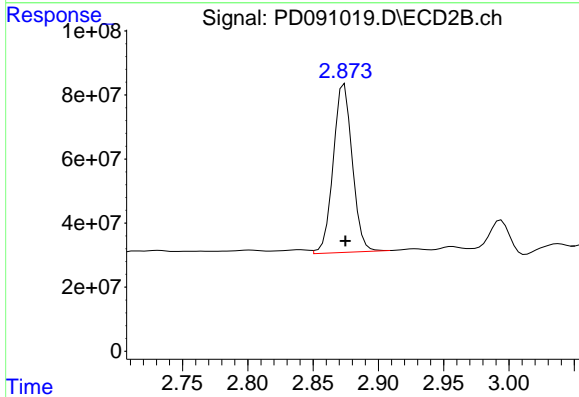
Volume Inj. : 1 µl
 Signal #1 Phase : ZB-MR1 Signal #2 Phase: ZB-MR2
 Signal #1 Info : 30M x 0.32mm x0.5 Signal #2 Info : 30M x 0.32mm x 0.25µm



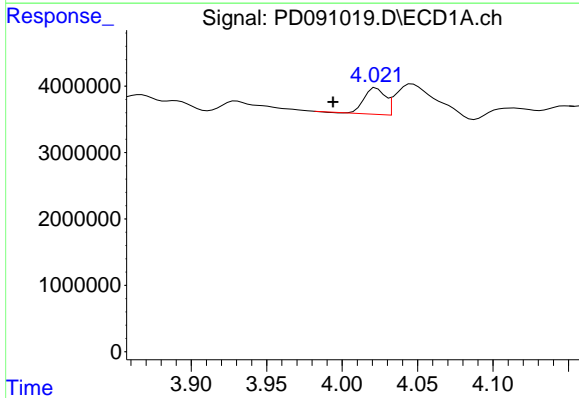


#1 Tetrachloro-m-xylene
 R.T.: 3.544 min
 Delta R.T.: -0.001 min
 Response: 62320756
 Conc: 20.01 ng/ml

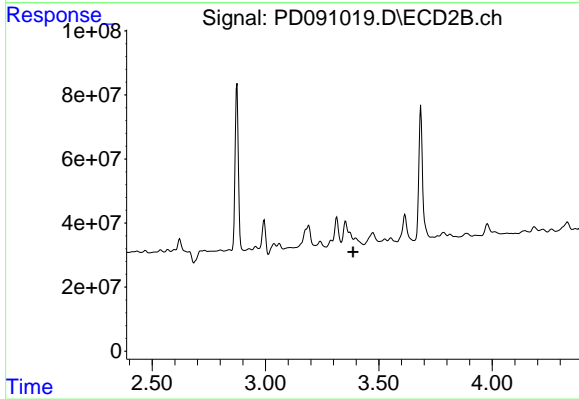
Instrument :
 ECD_D
 ClientSampleId :



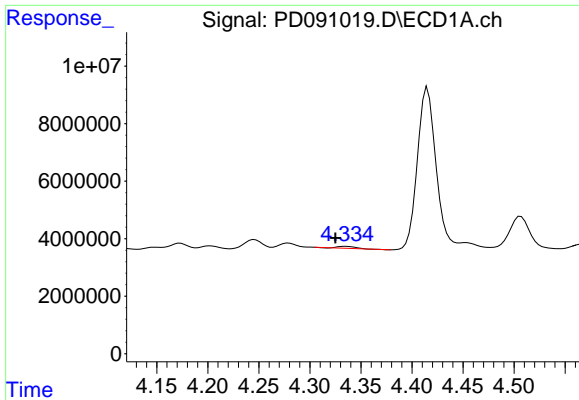
#1 Tetrachloro-m-xylene
 R.T.: 2.874 min
 Delta R.T.: 0.000 min
 Response: 533477959
 Conc: 17.92 ng/ml



#2 alpha-BHC
 R.T.: 4.023 min
 Delta R.T.: 0.029 min
 Response: 3898382
 Conc: 0.54 ng/ml

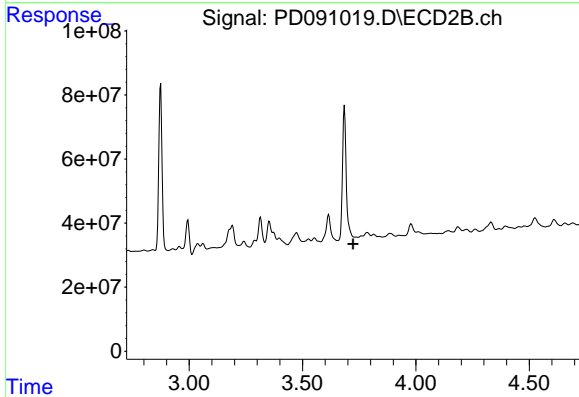


#2 alpha-BHC
 R.T.: 3.398 min
 Delta R.T.: 0.011 min
 Response: -4637004
 Conc: N.D.

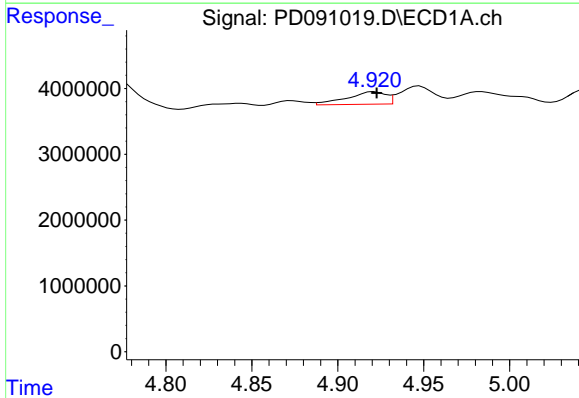


#3 gamma-BHC (Lindane)
 R.T.: 4.335 min
 Delta R.T.: 0.010 min
 Response: 921916
 Conc: 0.14 ng/ml

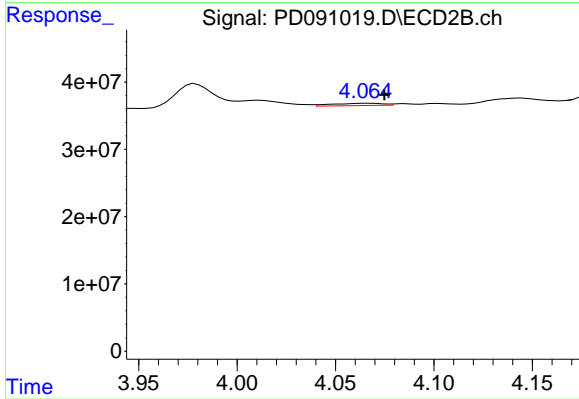
Instrument :
 ECD_D
 ClientSampleId :



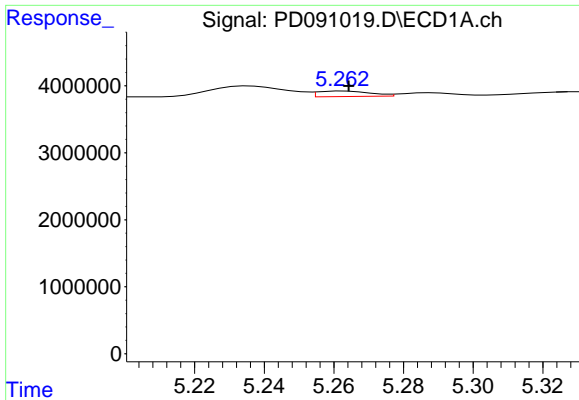
#3 gamma-BHC (Lindane)
 R.T.: 3.737 min
 Delta R.T.: 0.015 min
 Response: -3768463
 Conc: N.D.



#4 Heptachlor
 R.T.: 4.921 min
 Delta R.T.: -0.001 min
 Response: 2986968
 Conc: 0.53 ng/ml

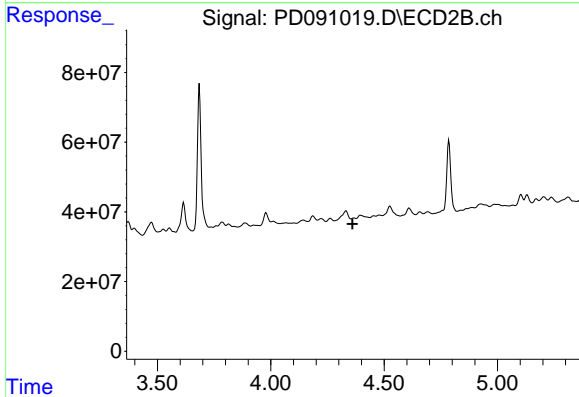


#4 Heptachlor
 R.T.: 4.066 min
 Delta R.T.: -0.009 min
 Response: 6189674
 Conc: 0.14 ng/ml

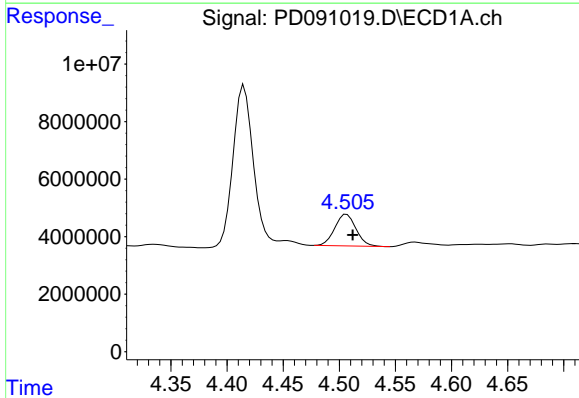


#5 Aldrin
 R.T.: 5.263 min
 Delta R.T.: -0.001 min
 Response: 879506
 Conc: 0.13 ng/ml

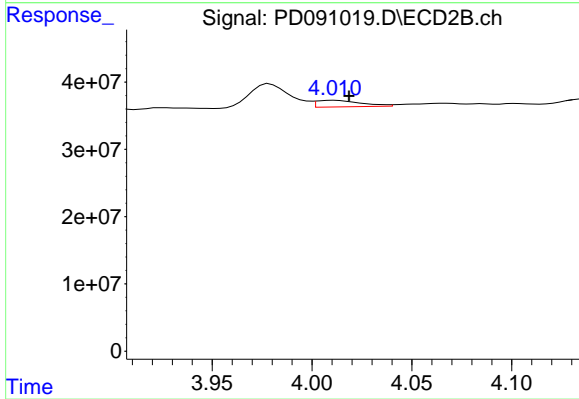
Instrument :
 ECD_D
 ClientSampleId :



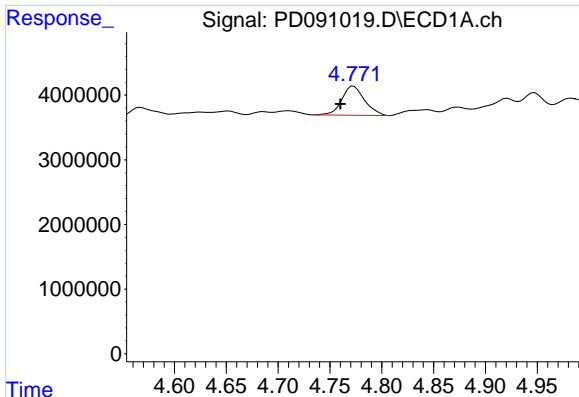
#5 Aldrin
 R.T.: 4.368 min
 Delta R.T.: 0.007 min
 Response: -7465891
 Conc: N.D.



#6 beta-BHC
 R.T.: 4.507 min
 Delta R.T.: -0.005 min
 Response: 14538321
 Conc: 5.55 ng/ml



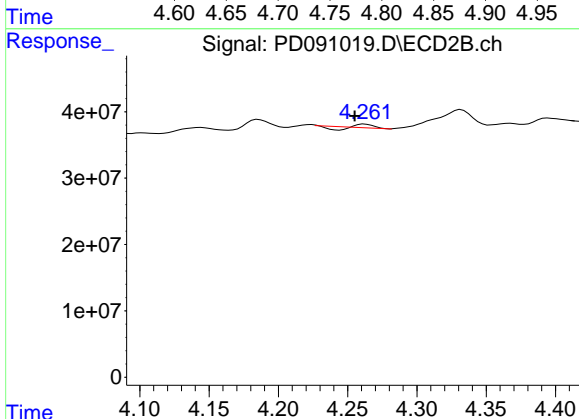
#6 beta-BHC
 R.T.: 4.011 min
 Delta R.T.: -0.007 min
 Response: 15145637
 Conc: 0.76 ng/ml



#7 delta-BHC

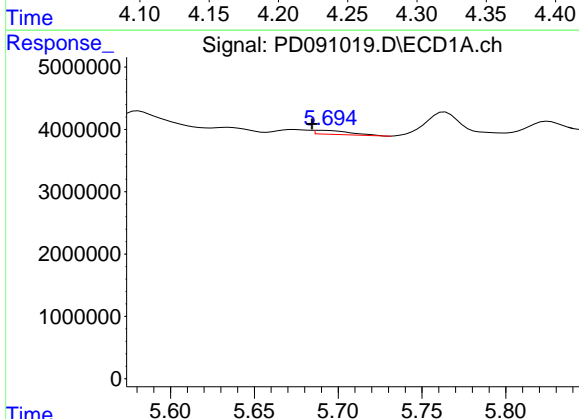
R.T.: 4.773 min
 Delta R.T.: 0.013 min
 Response: 6900503
 Conc: 1.02 ng/ml

Instrument :
 ECD_D
 ClientSampleId :



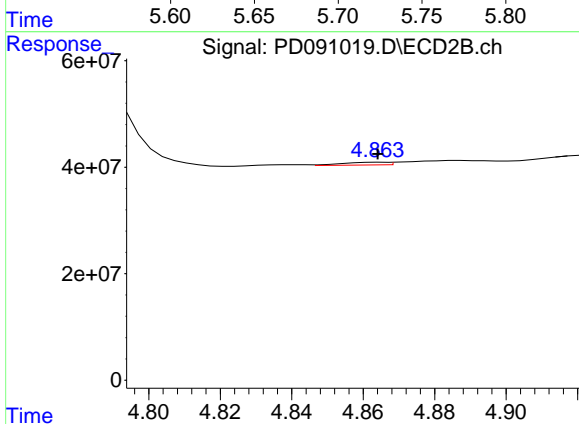
#7 delta-BHC

R.T.: 4.263 min
 Delta R.T.: 0.007 min
 Response: 1120158
 Conc: 0.02 ng/ml



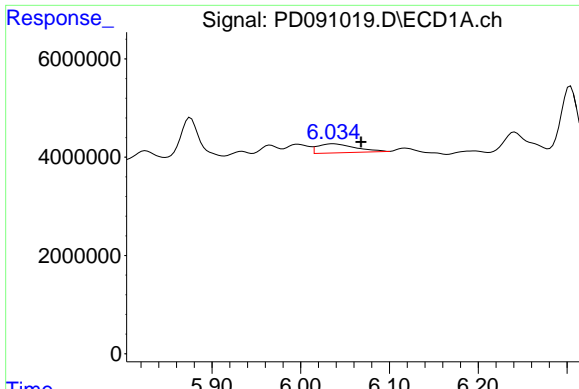
#8 Heptachlor epoxide

R.T.: 5.690 min
 Delta R.T.: 0.006 min
 Response: 941608
 Conc: 0.16 ng/ml



#8 Heptachlor epoxide

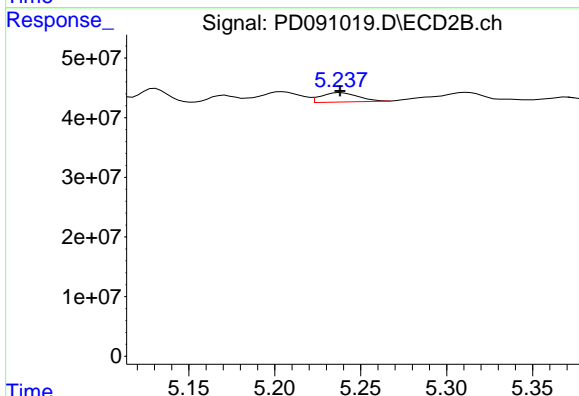
R.T.: 4.865 min
 Delta R.T.: 0.000 min
 Response: 4542454
 Conc: 0.11 ng/ml



#9 Endosulfan I

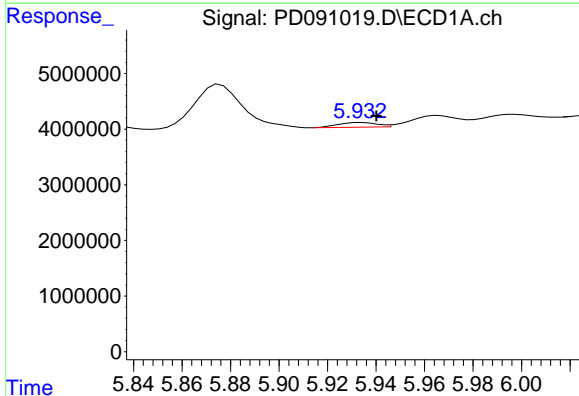
R.T.: 6.036 min
 Delta R.T.: -0.032 min
 Response: 5410622
 Conc: 0.98 ng/ml

Instrument :
 ECD_D
 ClientSampleId :



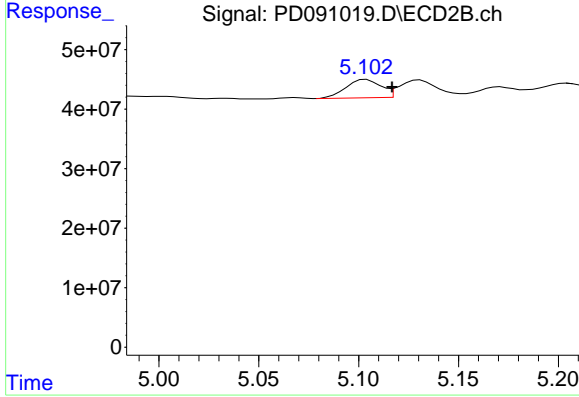
#9 Endosulfan I

R.T.: 5.238 min
 Delta R.T.: 0.000 min
 Response: 23423104
 Conc: 0.59 ng/ml



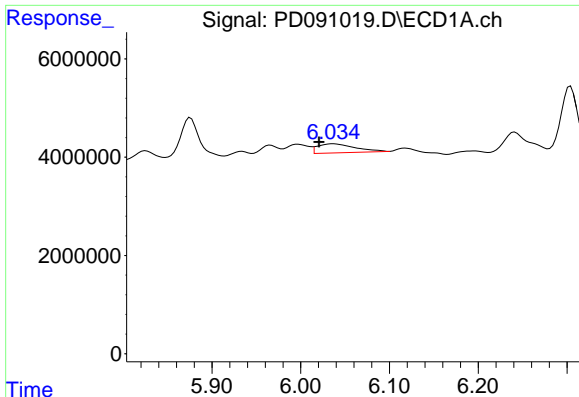
#10 gamma-Chlordane

R.T.: 5.934 min
 Delta R.T.: -0.006 min
 Response: 954670
 Conc: 0.16 ng/ml



#10 gamma-Chlordane

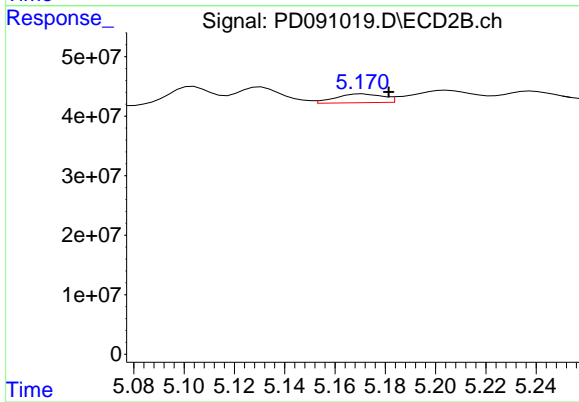
R.T.: 5.104 min
 Delta R.T.: -0.013 min
 Response: 37465148
 Conc: 0.83 ng/ml



#11 alpha-Chlordane

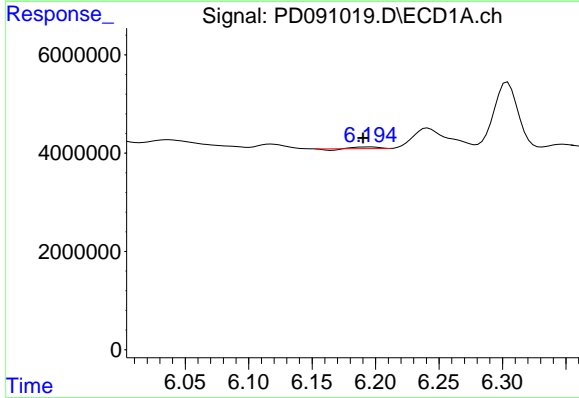
R.T.: 6.036 min
 Delta R.T.: 0.016 min
 Response: 5410622
 Conc: 0.88 ng/ml

Instrument :
 ECD_D
 ClientSampleId :



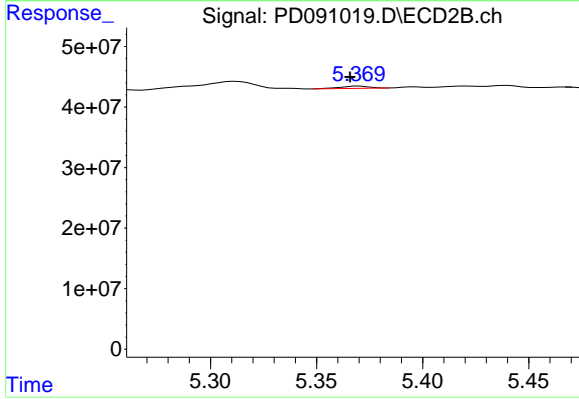
#11 alpha-Chlordane

R.T.: 5.171 min
 Delta R.T.: -0.010 min
 Response: 19163813
 Conc: 0.44 ng/ml



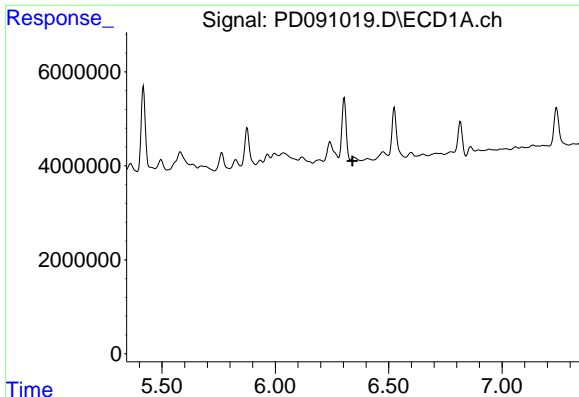
#12 4,4'-DDE

R.T.: 6.195 min
 Delta R.T.: 0.005 min
 Response: 254772
 Conc: 0.05 ng/ml



#12 4,4'-DDE

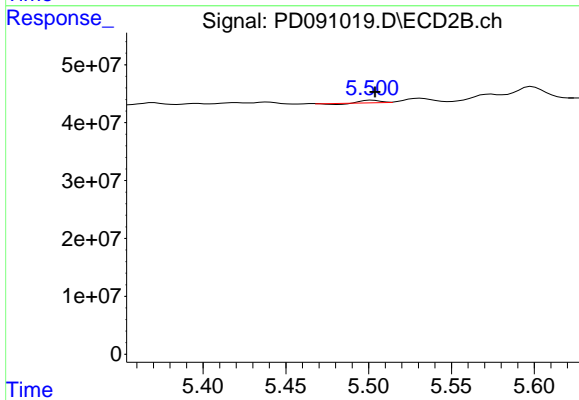
R.T.: 5.370 min
 Delta R.T.: 0.004 min
 Response: 3501637
 Conc: 0.08 ng/ml



#13 Dieldrin

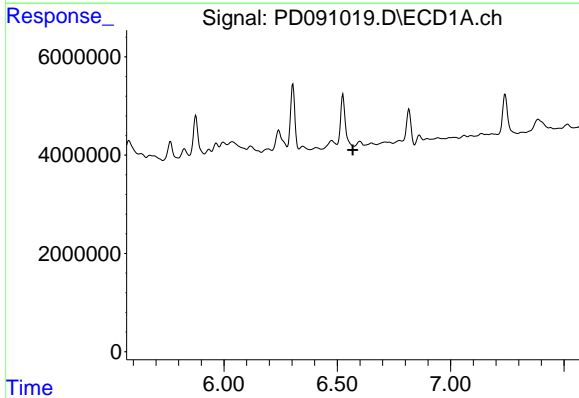
R.T.: 6.348 min
 Delta R.T.: 0.007 min
 Response: -18376352
 Conc: N.D.

Instrument :
 ECD_D
 ClientSampleId :



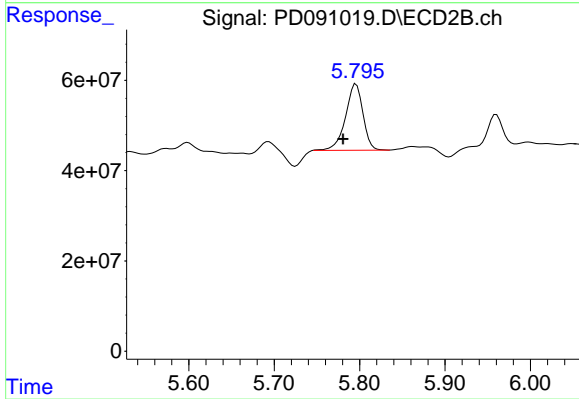
#13 Dieldrin

R.T.: 5.502 min
 Delta R.T.: -0.002 min
 Response: 2613038
 Conc: 0.06 ng/ml



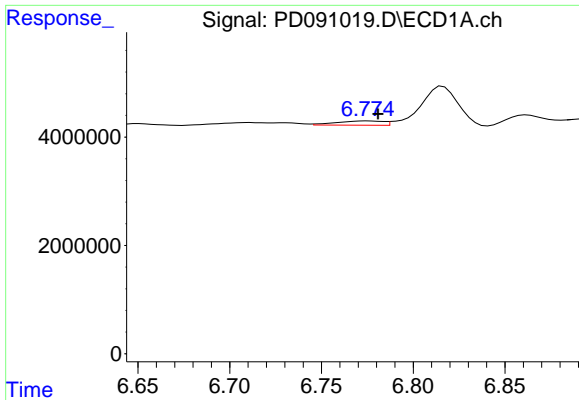
#14 Endrin

R.T.: 0.000 min
 Exp R.T. : 6.568 min
 Response: 0
 Conc: N.D.



#14 Endrin

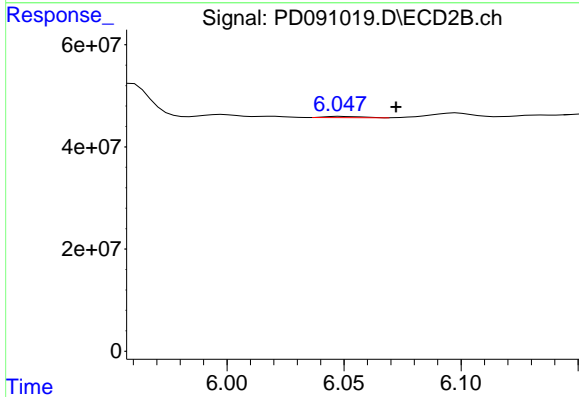
R.T.: 5.796 min
 Delta R.T.: 0.015 min
 Response: 208190140
 Conc: 5.14 ng/ml



#15 Endosulfan II

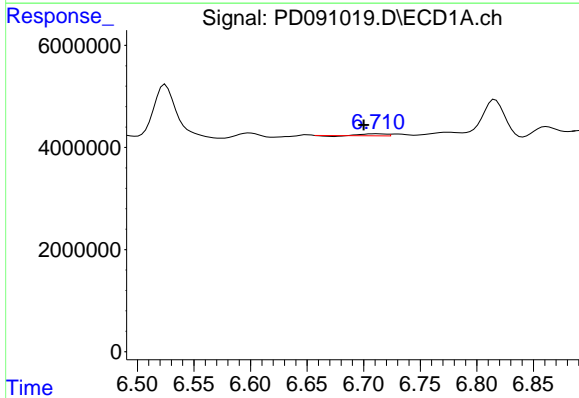
R.T.: 6.775 min
 Delta R.T.: -0.006 min
 Response: 1400962
 Conc: 0.28 ng/ml

Instrument :
 ECD_D
 ClientSampleId :



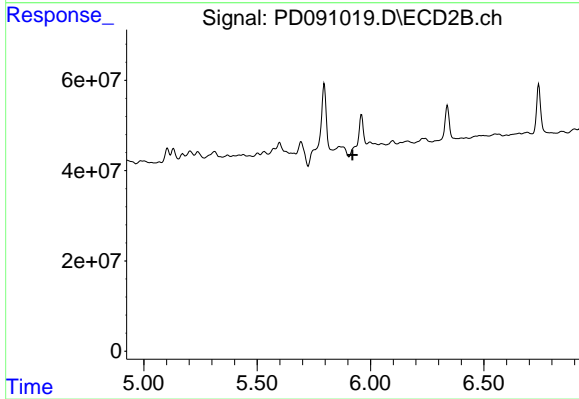
#15 Endosulfan II

R.T.: 6.049 min
 Delta R.T.: -0.023 min
 Response: 2584447
 Conc: 0.07 ng/ml



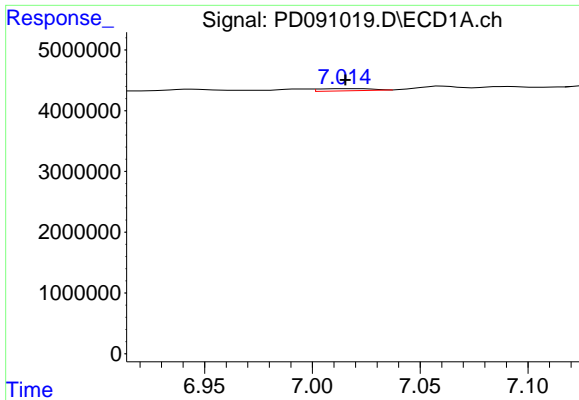
#16 4,4'-DDD

R.T.: 6.712 min
 Delta R.T.: 0.011 min
 Response: 483497
 Conc: 0.12 ng/ml



#16 4,4'-DDD

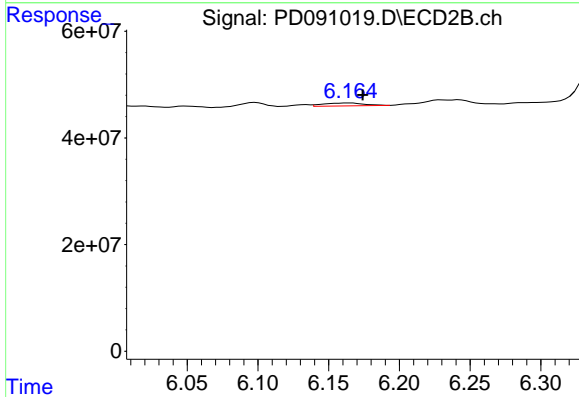
R.T.: 0.000 min
 Exp R.T.: 5.921 min
 Response: 0
 Conc: N.D.



#17 4,4'-DDT

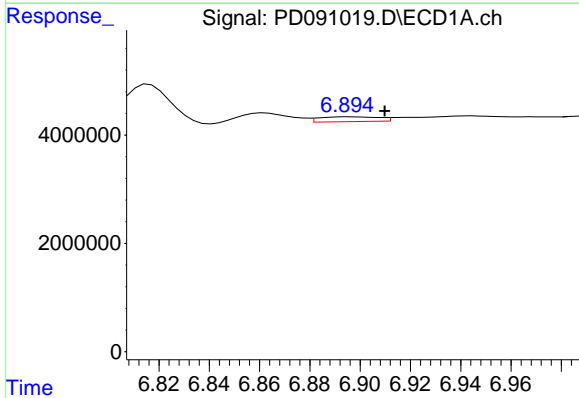
R.T.: 7.015 min
 Delta R.T.: 0.000 min
 Response: 585651
 Conc: 0.14 ng/ml

Instrument :
 ECD_D
 ClientSampleId :



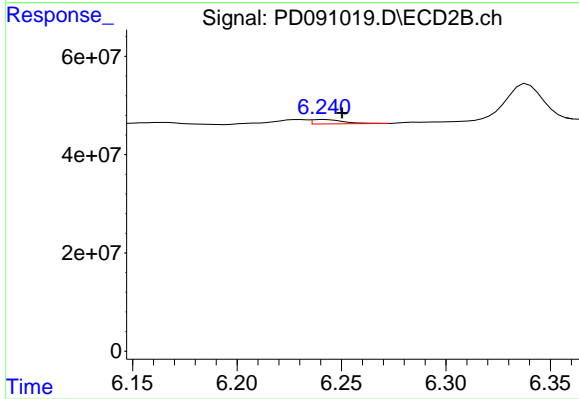
#17 4,4'-DDT

R.T.: 6.165 min
 Delta R.T.: -0.009 min
 Response: 10800261
 Conc: 0.31 ng/ml



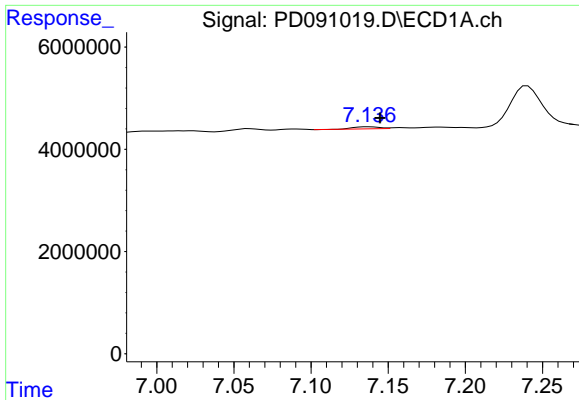
#18 Endrin aldehyde

R.T.: 6.896 min
 Delta R.T.: -0.014 min
 Response: 1473499
 Conc: 0.40 ng/ml



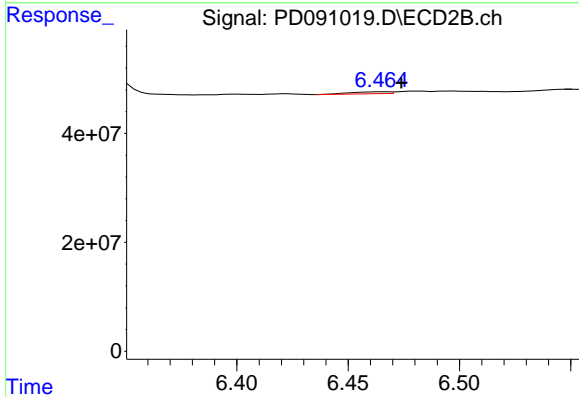
#18 Endrin aldehyde

R.T.: 6.242 min
 Delta R.T.: -0.009 min
 Response: 9102973
 Conc: 0.33 ng/ml

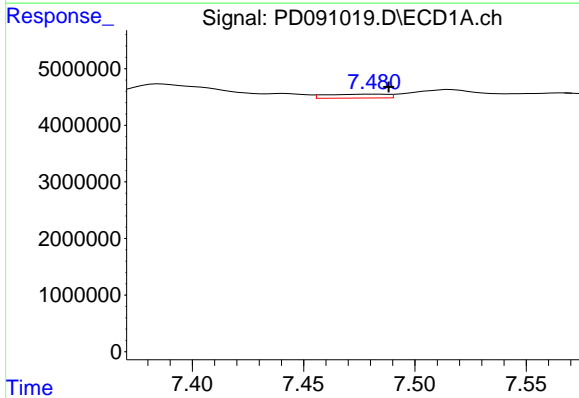


#19 Endosulfan Sulfate
 R.T.: 7.137 min
 Delta R.T.: -0.007 min
 Response: 478916
 Conc: 0.10 ng/ml

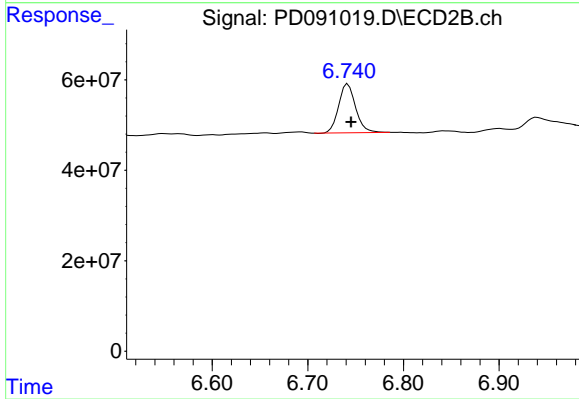
Instrument :
 ECD_D
 ClientSampleId :



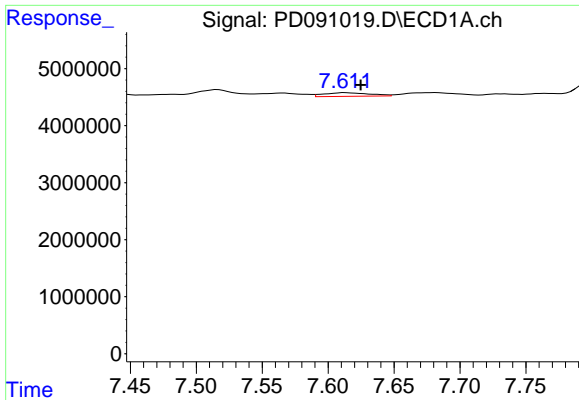
#19 Endosulfan Sulfate
 R.T.: 6.466 min
 Delta R.T.: -0.008 min
 Response: 4030237
 Conc: 0.11 ng/ml



#20 Methoxychlor
 R.T.: 7.482 min
 Delta R.T.: -0.006 min
 Response: 1308760
 Conc: 0.62 ng/ml



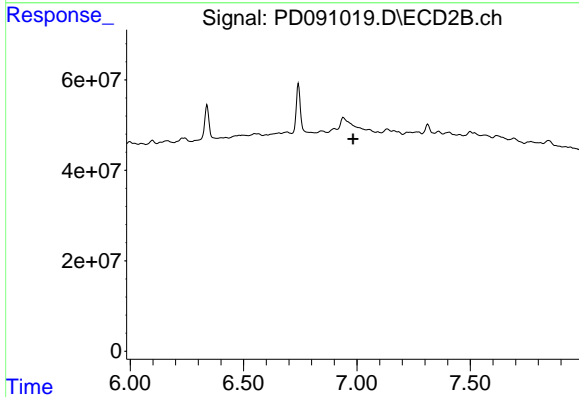
#20 Methoxychlor
 R.T.: 6.742 min
 Delta R.T.: -0.003 min
 Response: 133876547
 Conc: 7.68 ng/ml



#21 Endrin ketone

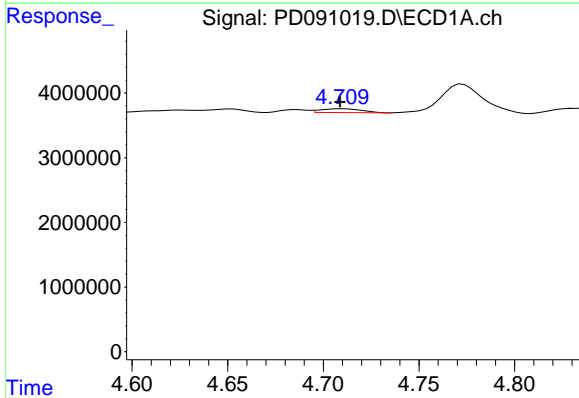
R.T.: 7.613 min
 Delta R.T.: -0.012 min
 Response: 1534316
 Conc: 0.32 ng/ml

Instrument :
 ECD_D
 ClientSampleId :



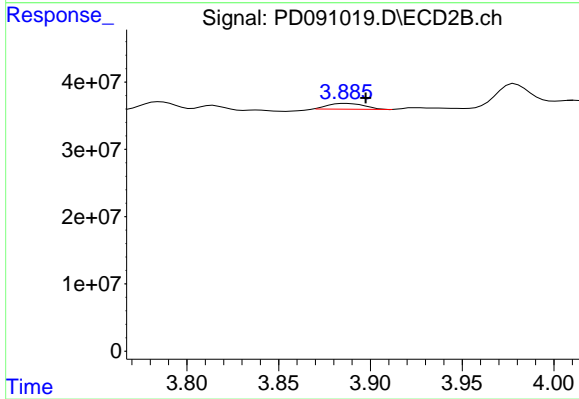
#21 Endrin ketone

R.T.: 0.000 min
 Exp R.T. : 6.983 min
 Response: 0
 Conc: N.D.



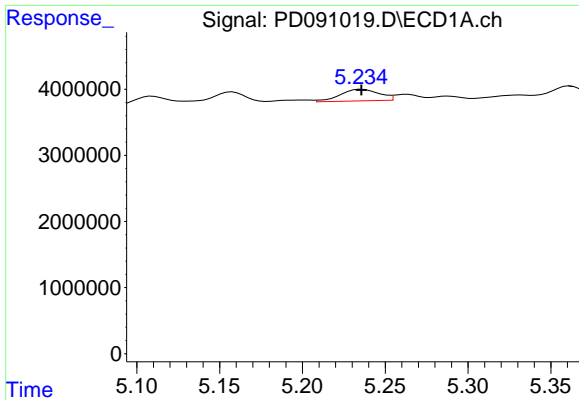
#23 Chlordane-1

R.T.: 4.710 min
 Delta R.T.: 0.001 min
 Response: 889249
 Conc: 4.71 ng/ml



#23 Chlordane-1

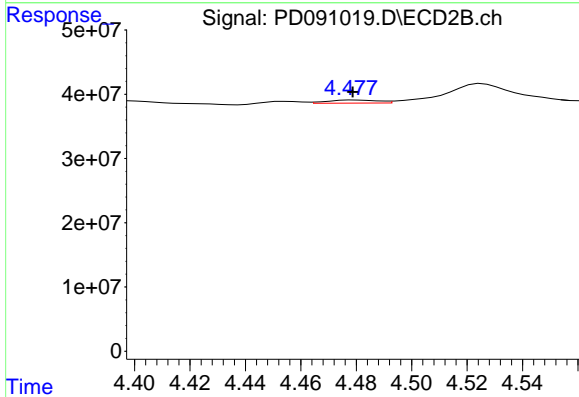
R.T.: 3.887 min
 Delta R.T.: -0.011 min
 Response: 11802688
 Conc: 9.47 ng/ml



#24 Chlordane-2

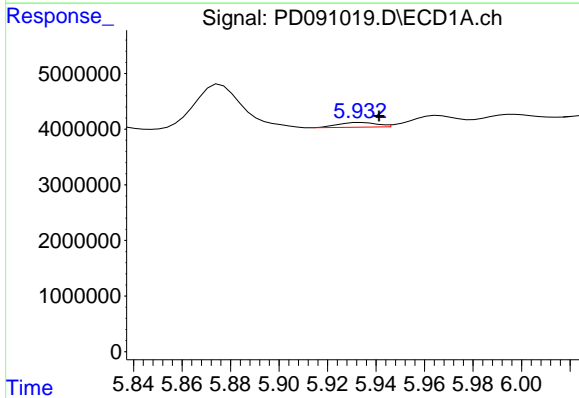
R.T.: 5.236 min
 Delta R.T.: 0.000 min
 Response: 2840471
 Conc: 14.71 ng/ml

Instrument :
 ECD_D
 ClientSampleId :



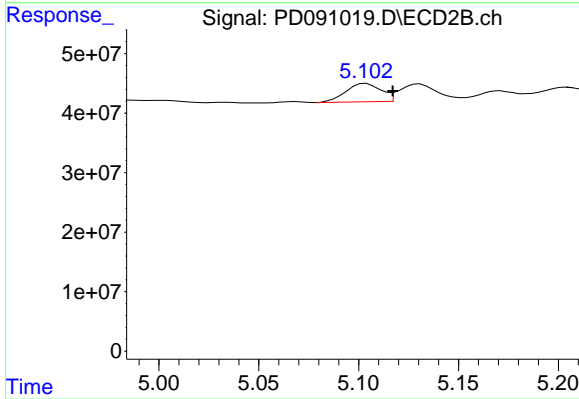
#24 Chlordane-2

R.T.: 4.479 min
 Delta R.T.: 0.000 min
 Response: 6201823
 Conc: 4.75 ng/ml



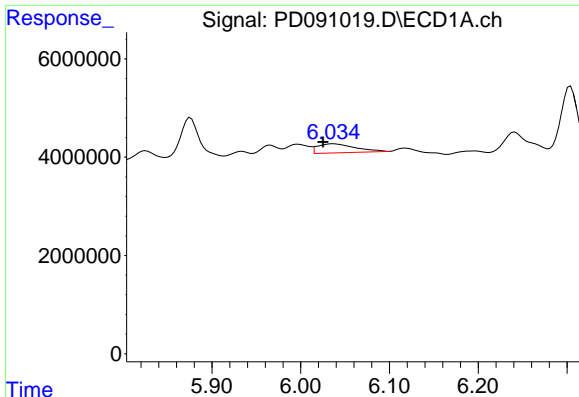
#25 Chlordane-3

R.T.: 5.934 min
 Delta R.T.: -0.007 min
 Response: 954670
 Conc: 1.25 ng/ml



#25 Chlordane-3

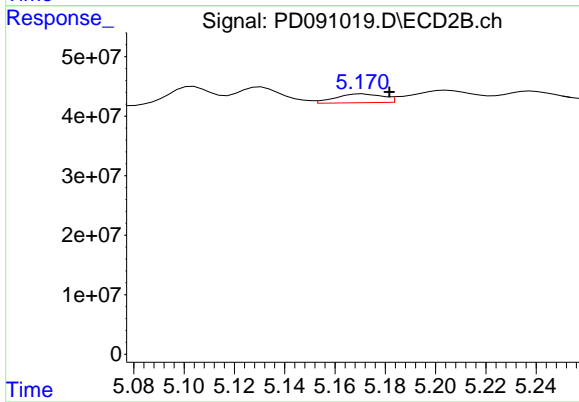
R.T.: 5.104 min
 Delta R.T.: -0.013 min
 Response: 37465148
 Conc: 9.63 ng/ml



#26 Chlordane-4

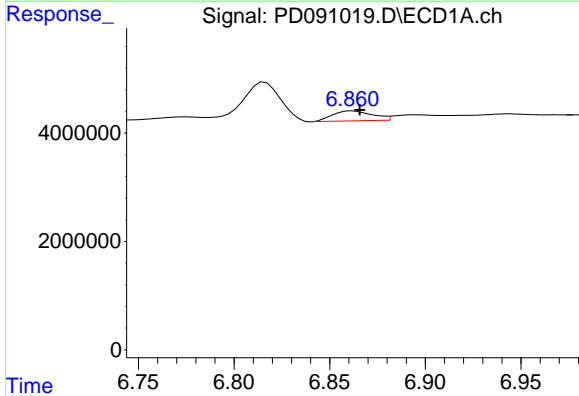
R.T.: 6.036 min
 Delta R.T.: 0.011 min
 Response: 5410622
 Conc: 5.58 ng/ml

Instrument :
 ECD_D
 ClientSampleId :



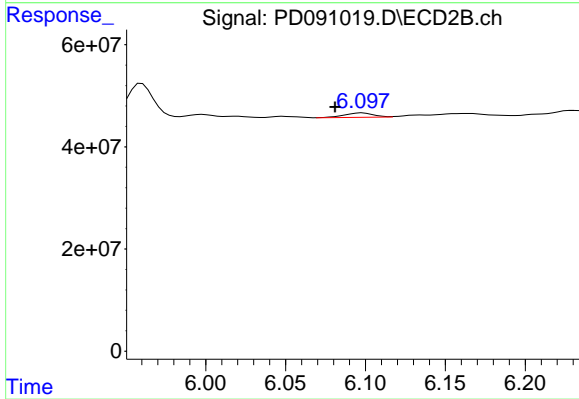
#26 Chlordane-4

R.T.: 5.171 min
 Delta R.T.: -0.011 min
 Response: 19163813
 Conc: 5.74 ng/ml



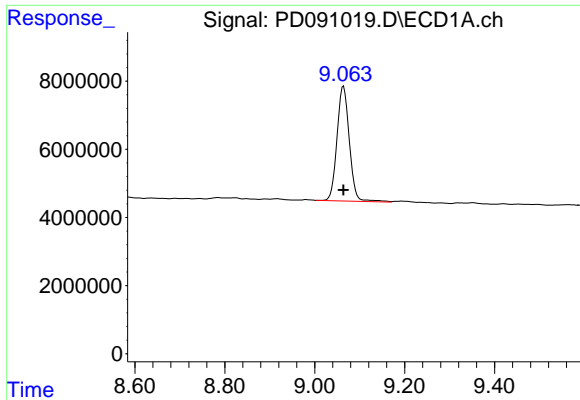
#27 Chlordane-5

R.T.: 6.862 min
 Delta R.T.: -0.004 min
 Response: 2668421
 Conc: 17.76 ng/ml



#27 Chlordane-5

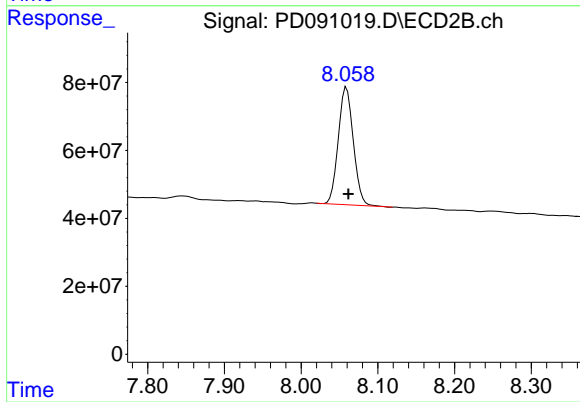
R.T.: 6.098 min
 Delta R.T.: 0.017 min
 Response: 10724556
 Conc: 7.27 ng/ml



#28 Decachlorobiphenyl

R.T.: 9.064 min
Delta R.T.: 0.000 min
Response: 64085230
Conc: 13.70 ng/ml

Instrument :
ECD_D
ClientSampleId :



#28 Decachlorobiphenyl

R.T.: 8.059 min
Delta R.T.: -0.003 min
Response: 469919228
Conc: 15.51 ng/ml