

Data Path : Z:\pestpcbsrv\HPCHEM1\ECD\_D\Data\PD110725\  
 Data File : PD091021.D  
 Signal(s) : Signal #1: ECD1A.ch Signal #2: ECD2B.ch  
 Acq On : 07 Nov 2025 11:07  
 Operator : AR\AJ  
 Sample : Q3534-05DL 10X  
 Misc :  
 ALS Vial : 8 Sample Multiplier: 1

Instrument :  
 ECD\_D  
 ClientSampleId :

Integration File signal 1: autoint1.e  
 Integration File signal 2: autoint2.e  
 Quant Time: Nov 08 02:43:08 2025  
 Quant Method : Z:\pestpcbsrv\HPCHEM1\ECD\_D\Method\PD101725.M  
 Quant Title : GC Extractables  
 QLast Update : Fri Oct 17 17:43:28 2025  
 Response via : Initial Calibration  
 Integrator: ChemStation

Volume Inj. : 1 µl  
 Signal #1 Phase : ZB-MR2 Signal #2 Phase: ZB-MR2  
 Signal #1 Info : 30M x 0.32mm x0.5 Signal #2 Info : 30M x 0.32mm x 0.25µm

	Compound	RT#1	RT#2	Resp#1	Resp#2	ng/ml	ng/ml
-----							
System Monitoring Compounds							
1)	SA Tetrachlo...	3.544	2.875	5555434	104.7E6	1.784	3.517 #
28)	SA Decachlor...	9.064	8.060	5878775	71504006	1.257	2.361 #
Target Compounds							
2)	A alpha-BHC	3.972f	3.369f	93521647	130.5E6	13.030	2.553 #
3)	MA gamma-BHC...	4.319	0.000	468506	0	0.069	N.D. #
4)	MA Heptachlor	4.924	4.084	2735738	30559010	0.489	0.685 #
5)	MB Aldrin	0.000	4.367	0	6431396	N.D.	0.139 #
6)	B beta-BHC	4.523	4.022	226.0E6	1411.8E6	86.285	71.196
7)	B delta-BHC	4.775	4.259	17382643	5973806	2.571	0.125 #
8)	B Heptachlo...	0.000	4.862	0	10910092	N.D.	0.256 #
9)	A Endosulfan I	6.073	5.238	50718806	18813274	9.161	0.478 #
10)	B gamma-Chl...	5.934	5.109	1276101	-1276765	0.215	N.D. #
11)	B alpha-Chl...	6.024	5.169	2486699	4305113	0.402	0.100 #
12)	B 4,4'-DDE	6.181	5.354	2783403	14939080	0.523	0.341 #
13)	MA Dieldrin	6.332	5.512	-1707485	83990091	N.D.	1.901
14)	MA Endrin	6.581	5.797f	2173147	29980826	0.439	0.740 #
15)	B Endosulfa...	0.000	6.087f	0	105.6E6	N.D.	2.811 #
17)	MA 4,4'-DDT	6.998f	6.178	6943436	31658660	1.689	0.903 #
18)	B Endrin al...	6.937f	6.240	7680751	54608655	2.097	1.972
19)	B Endosulfa...	0.000	6.448f	0	25910684	N.D.	0.723 #
20)	A Methoxychlor	7.493	6.771f	3193215	62615093	1.502	3.593 #
21)	B Endrin ke...	7.601f	6.994	5792643	-2899856	1.192	N.D. #
22)	Mirex	8.118	7.157f	260876	20208854	0.082	0.787 #
24)	Chlordane-2	5.232	4.477	1614035	3698802	8.357	2.835 #
25)	Chlordane-3	5.934	5.109	1276101	-1276765	1.673	N.D. #
26)	Chlordane-4	6.024	5.169	2486699	4305113	2.567	1.288 #
27)	Chlordane-5	6.867	6.087	2791592	105.6E6	18.579	71.510 #
-----							

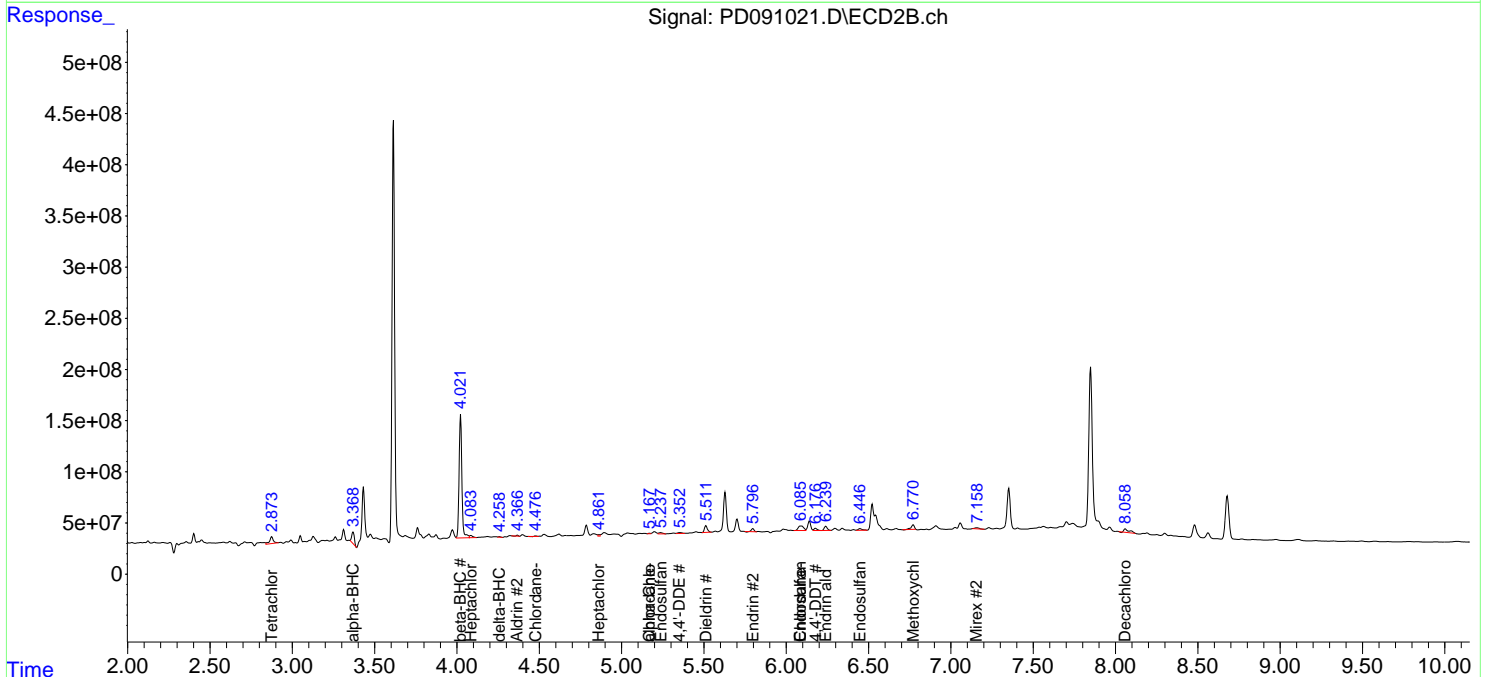
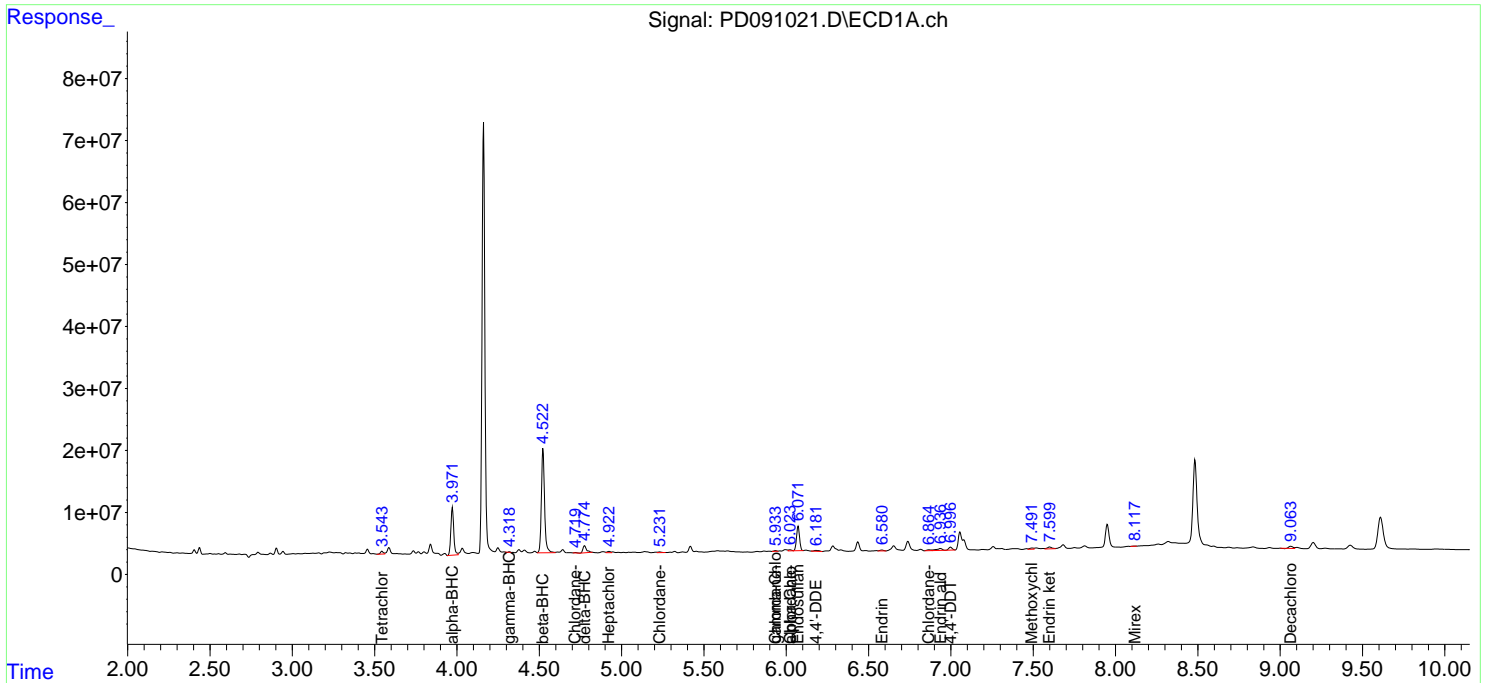
(f)=RT Delta > 1/2 Window (#)=Amounts differ by > 25% (m)=manual int.

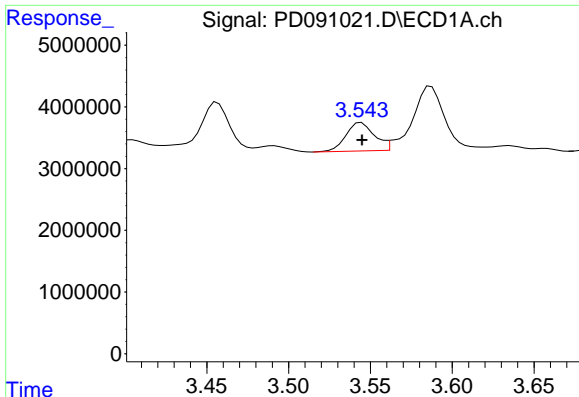
Data Path : Z:\pestpcbsrv\HPCHEM1\ECD\_D\Data\PD110725\  
 Data File : PD091021.D  
 Signal(s) : Signal #1: ECD1A.ch Signal #2: ECD2B.ch  
 Acq On : 07 Nov 2025 11:07  
 Operator : AR\AJ  
 Sample : Q3534-05DL 10X  
 Misc :  
 ALS Vial : 8 Sample Multiplier: 1

Instrument :  
 ECD\_D  
 ClientSampleId :

Integration File signal 1: autoint1.e  
 Integration File signal 2: autoint2.e  
 Quant Time: Nov 08 02:43:08 2025  
 Quant Method : Z:\pestpcbsrv\HPCHEM1\ECD\_D\Method\PD101725.M  
 Quant Title : GC Extractables  
 QLast Update : Fri Oct 17 17:43:28 2025  
 Response via : Initial Calibration  
 Integrator: ChemStation

Volume Inj. : 1 µl  
 Signal #1 Phase : ZB-MR1 Signal #2 Phase: ZB-MR2  
 Signal #1 Info : 30M x 0.32mm x0.5 Signal #2 Info : 30M x 0.32mm x 0.25µm

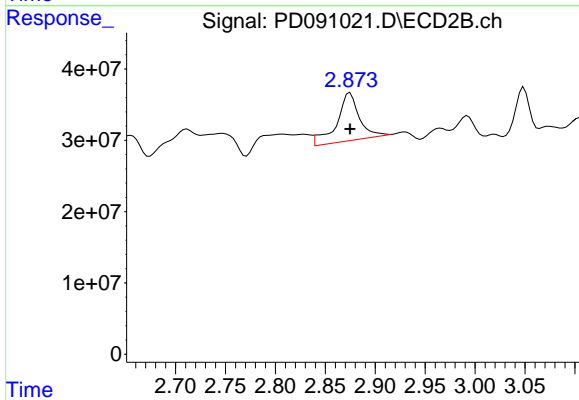




#1 Tetrachloro-m-xylene

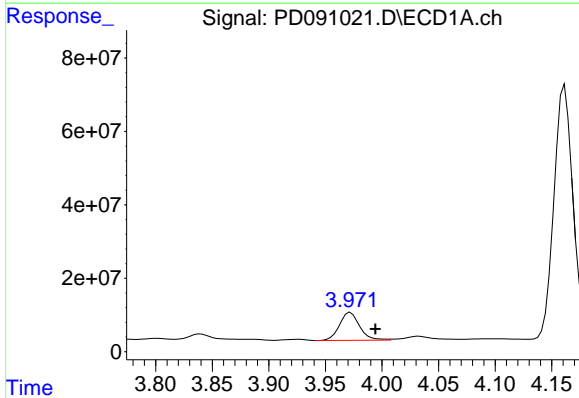
R.T.: 3.544 min  
 Delta R.T.: 0.000 min  
 Response: 5555434  
 Conc: 1.78 ng/ml

Instrument :  
 ECD\_D  
 ClientSampleId :



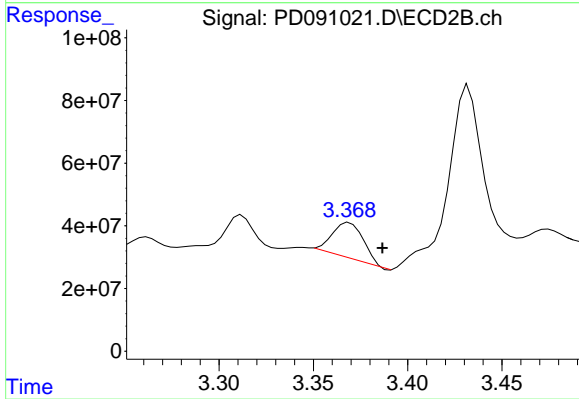
#1 Tetrachloro-m-xylene

R.T.: 2.875 min  
 Delta R.T.: 0.000 min  
 Response: 104730318  
 Conc: 3.52 ng/ml



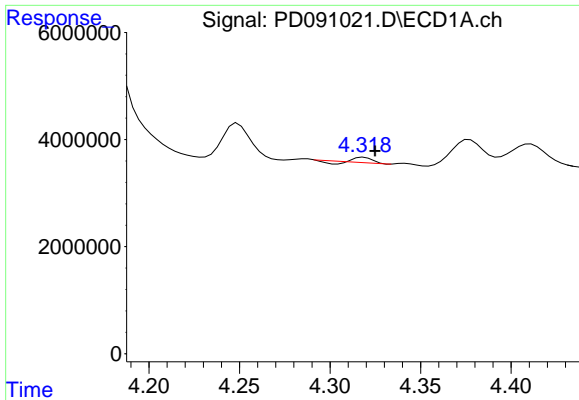
#2 alpha-BHC

R.T.: 3.972 min  
 Delta R.T.: -0.022 min  
 Response: 93521647  
 Conc: 13.03 ng/ml



#2 alpha-BHC

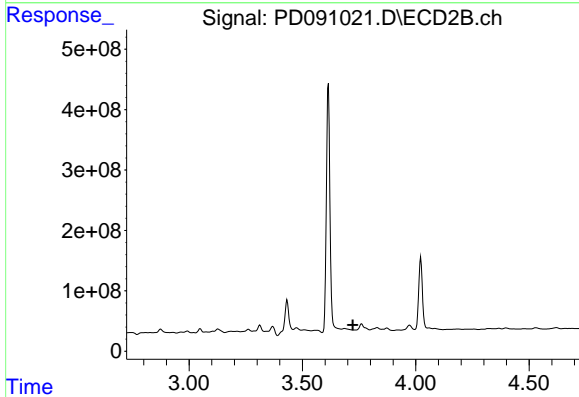
R.T.: 3.369 min  
 Delta R.T.: -0.017 min  
 Response: 130463457  
 Conc: 2.55 ng/ml



#3 gamma-BHC (Lindane)

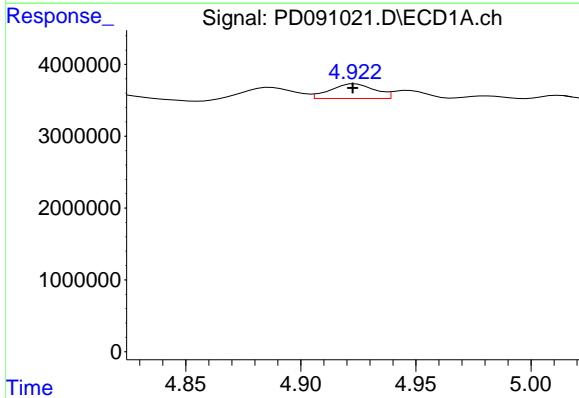
R.T.: 4.319 min  
 Delta R.T.: -0.006 min  
 Response: 468506  
 Conc: 0.07 ng/ml

Instrument :  
 ECD\_D  
 ClientSampleId :



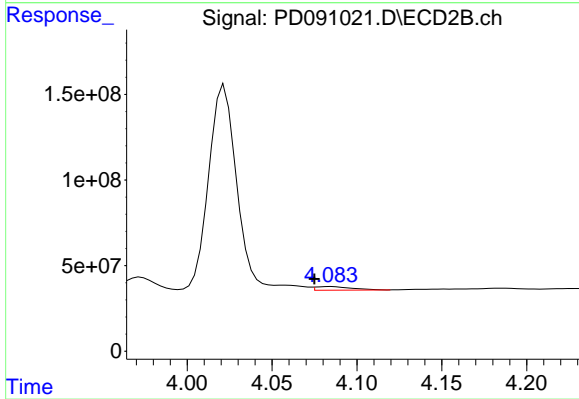
#3 gamma-BHC (Lindane)

R.T.: 0.000 min  
 Exp R.T. : 3.723 min  
 Response: 0  
 Conc: N.D.



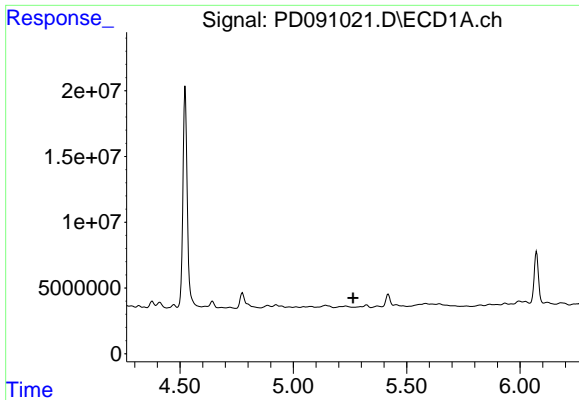
#4 Heptachlor

R.T.: 4.924 min  
 Delta R.T.: 0.001 min  
 Response: 2735738  
 Conc: 0.49 ng/ml



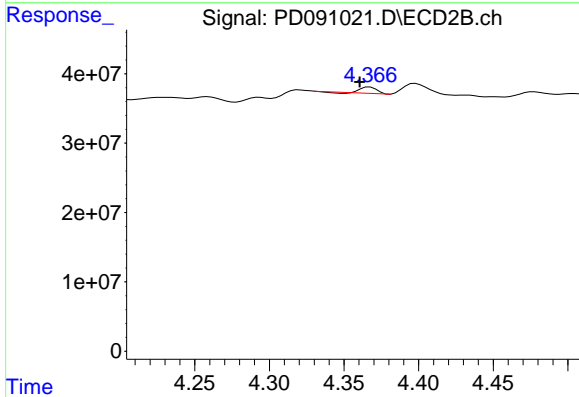
#4 Heptachlor

R.T.: 4.084 min  
 Delta R.T.: 0.009 min  
 Response: 30559010  
 Conc: 0.69 ng/ml

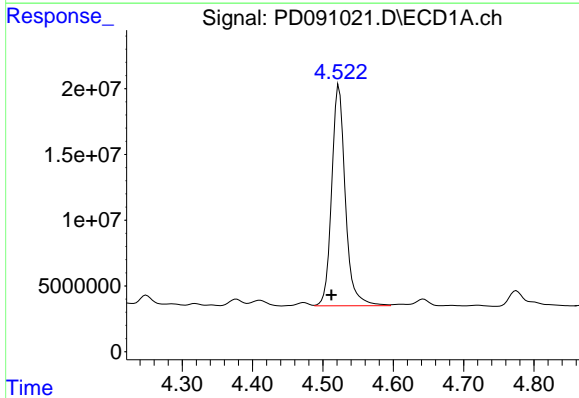


#5 Aldrin  
 R.T.: 0.000 min  
 Exp R.T.: 5.264 min  
 Response: 0  
 Conc: N.D.

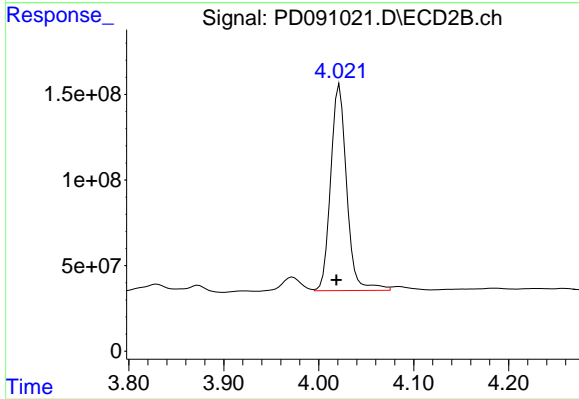
Instrument :  
 ECD\_D  
 ClientSampleId :



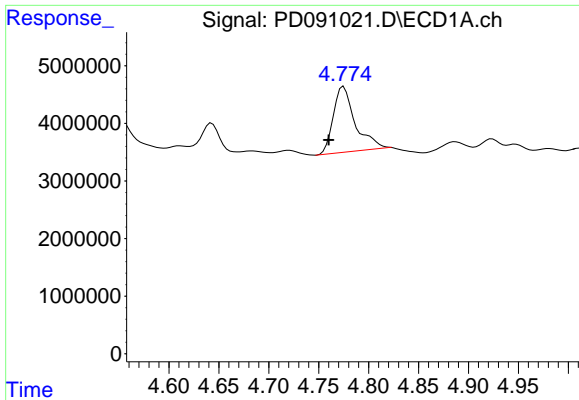
#5 Aldrin  
 R.T.: 4.367 min  
 Delta R.T.: 0.007 min  
 Response: 6431396  
 Conc: 0.14 ng/ml



#6 beta-BHC  
 R.T.: 4.523 min  
 Delta R.T.: 0.011 min  
 Response: 226033576  
 Conc: 86.28 ng/ml



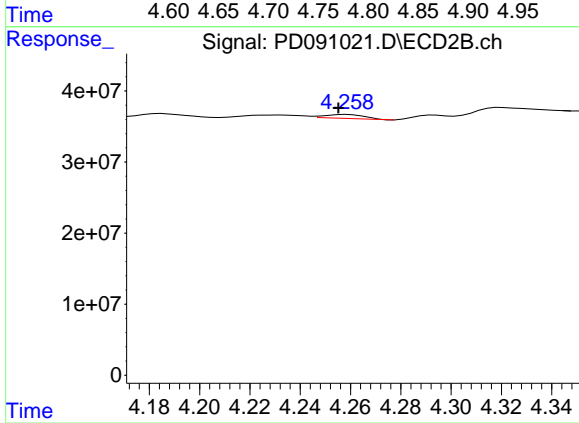
#6 beta-BHC  
 R.T.: 4.022 min  
 Delta R.T.: 0.003 min  
 Response: 1411781154  
 Conc: 71.20 ng/ml



#7 delta-BHC

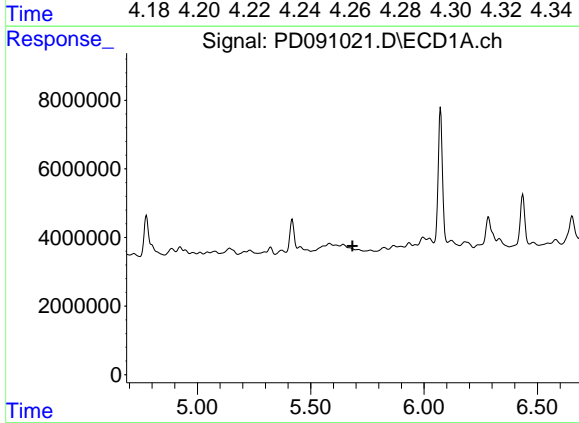
R.T.: 4.775 min  
 Delta R.T.: 0.015 min  
 Response: 17382643  
 Conc: 2.57 ng/ml

Instrument :  
 ECD\_D  
 ClientSampleId :



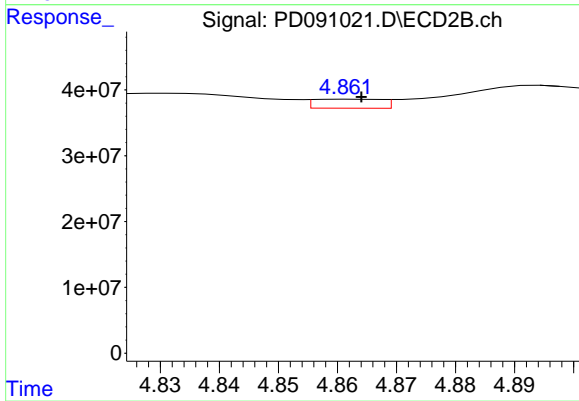
#7 delta-BHC

R.T.: 4.259 min  
 Delta R.T.: 0.003 min  
 Response: 5973806  
 Conc: 0.13 ng/ml



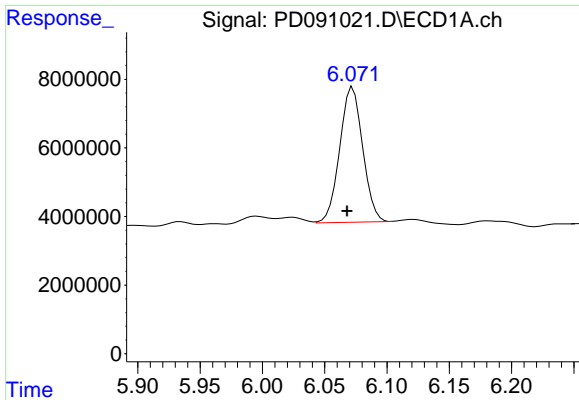
#8 Heptachlor epoxide

R.T.: 0.000 min  
 Exp R.T. : 5.684 min  
 Response: 0  
 Conc: N.D.



#8 Heptachlor epoxide

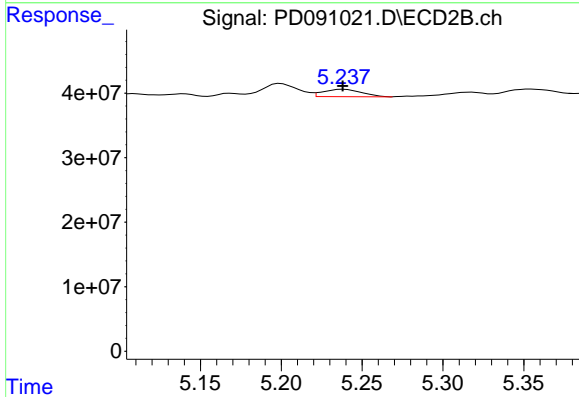
R.T.: 4.862 min  
 Delta R.T.: -0.002 min  
 Response: 10910092  
 Conc: 0.26 ng/ml



#9 Endosulfan I

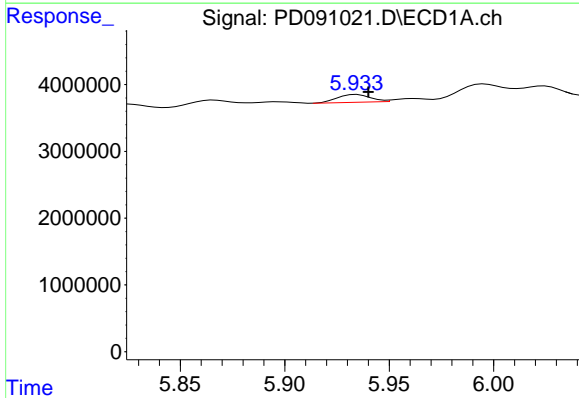
R.T.: 6.073 min  
 Delta R.T.: 0.005 min  
 Response: 50718806  
 Conc: 9.16 ng/ml

Instrument :  
 ECD\_D  
 ClientSampleId :



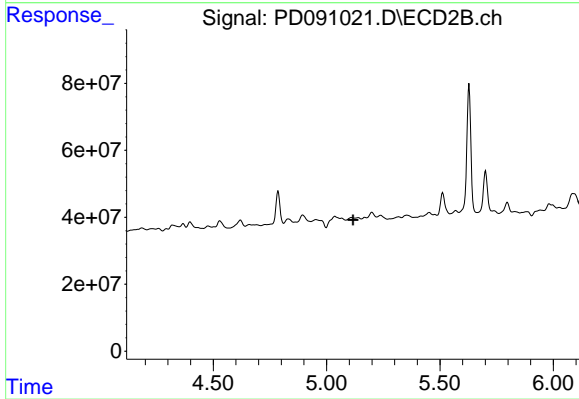
#9 Endosulfan I

R.T.: 5.238 min  
 Delta R.T.: 0.000 min  
 Response: 18813274  
 Conc: 0.48 ng/ml



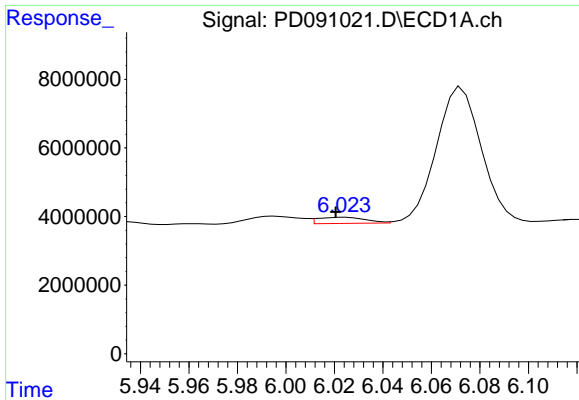
#10 gamma-Chlordane

R.T.: 5.934 min  
 Delta R.T.: -0.006 min  
 Response: 1276101  
 Conc: 0.22 ng/ml



#10 gamma-Chlordane

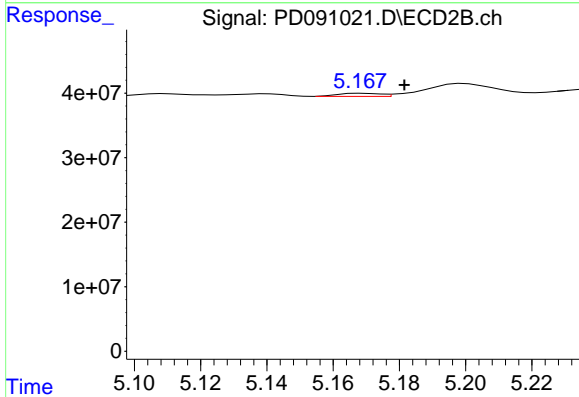
R.T.: 5.109 min  
 Delta R.T.: -0.007 min  
 Response: -1276765  
 Conc: N.D.



#11 alpha-Chlordane

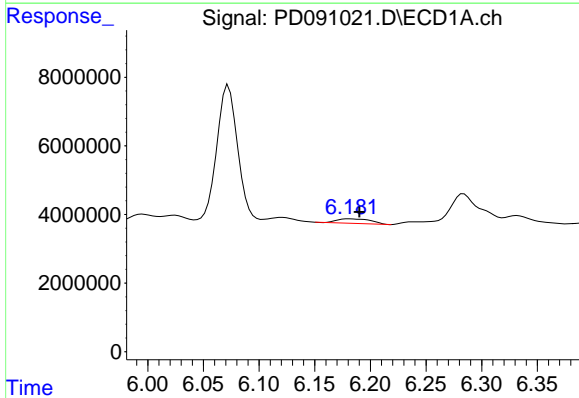
R.T.: 6.024 min  
 Delta R.T.: 0.004 min  
 Response: 2486699  
 Conc: 0.40 ng/ml

Instrument :  
 ECD\_D  
 ClientSampleId :



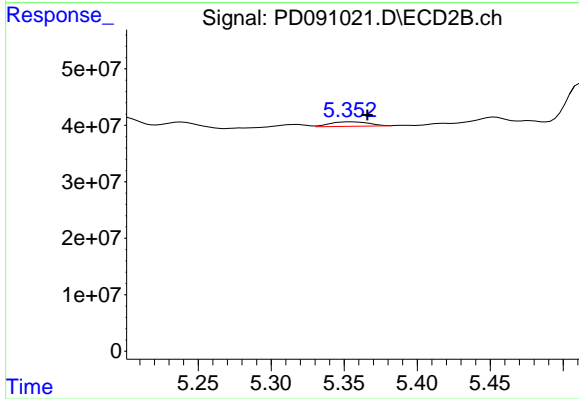
#11 alpha-Chlordane

R.T.: 5.169 min  
 Delta R.T.: -0.013 min  
 Response: 4305113  
 Conc: 0.10 ng/ml



#12 4,4'-DDE

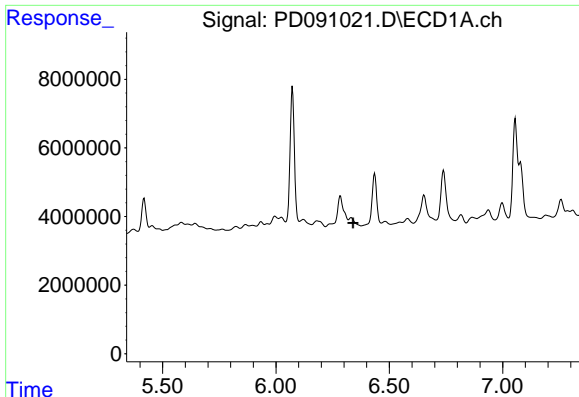
R.T.: 6.181 min  
 Delta R.T.: -0.009 min  
 Response: 2783403  
 Conc: 0.52 ng/ml



#12 4,4'-DDE

R.T.: 5.354 min  
 Delta R.T.: -0.012 min  
 Response: 14939080  
 Conc: 0.34 ng/ml

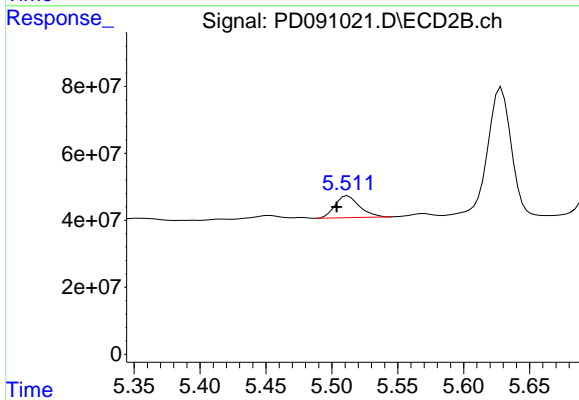




#13 Dieldrin

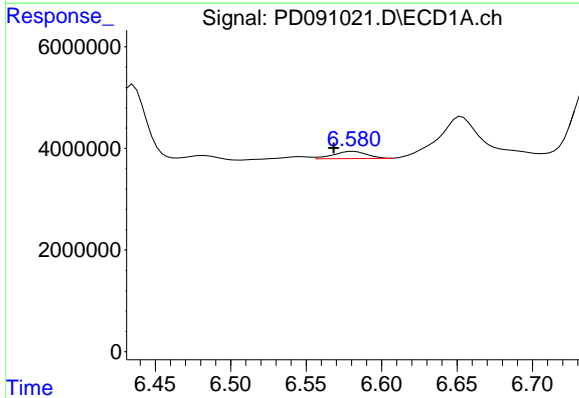
R.T.: 6.332 min  
 Delta R.T.: -0.008 min  
 Response: -1707485  
 Conc: N.D.

Instrument :  
 ECD\_D  
 ClientSampleId :



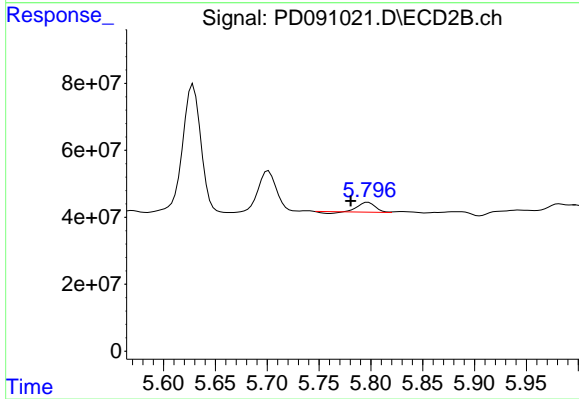
#13 Dieldrin

R.T.: 5.512 min  
 Delta R.T.: 0.008 min  
 Response: 83990091  
 Conc: 1.90 ng/ml



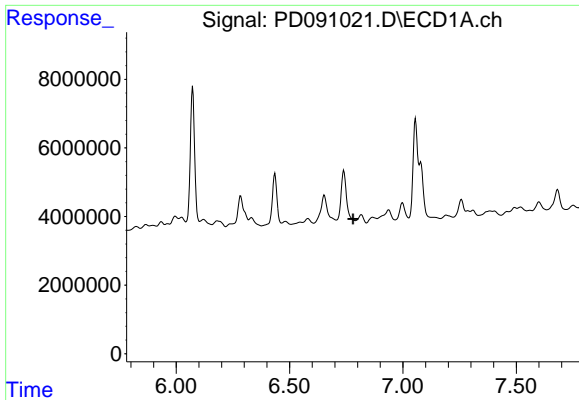
#14 Endrin

R.T.: 6.581 min  
 Delta R.T.: 0.013 min  
 Response: 2173147  
 Conc: 0.44 ng/ml



#14 Endrin

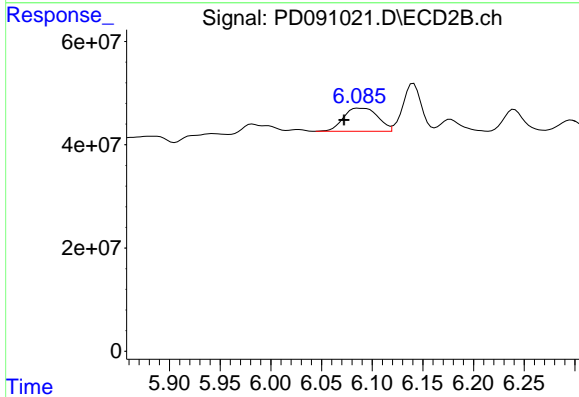
R.T.: 5.797 min  
 Delta R.T.: 0.017 min  
 Response: 29980826  
 Conc: 0.74 ng/ml



#15 Endosulfan II

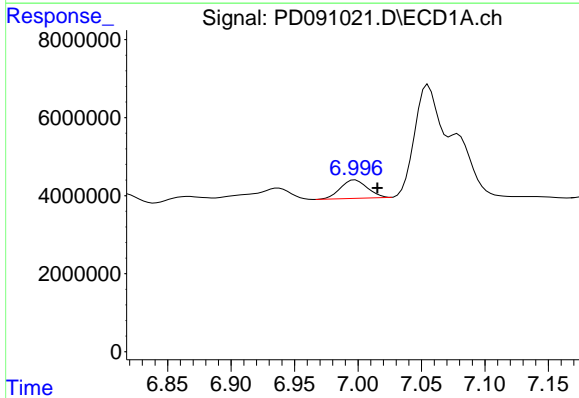
R.T.: 0.000 min  
 Exp R.T.: 6.781 min  
 Response: 0  
 Conc: N.D.

Instrument :  
 ECD\_D  
 ClientSampleId :



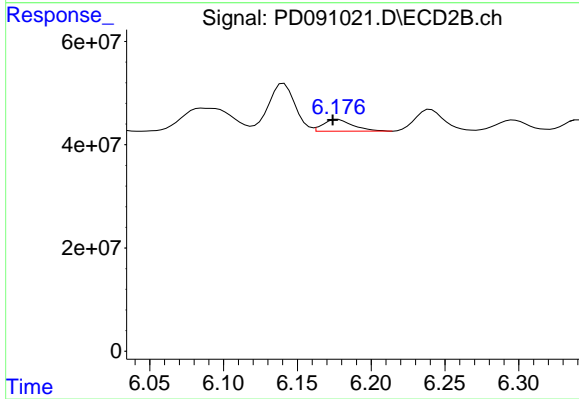
#15 Endosulfan II

R.T.: 6.087 min  
 Delta R.T.: 0.015 min  
 Response: 105550655  
 Conc: 2.81 ng/ml



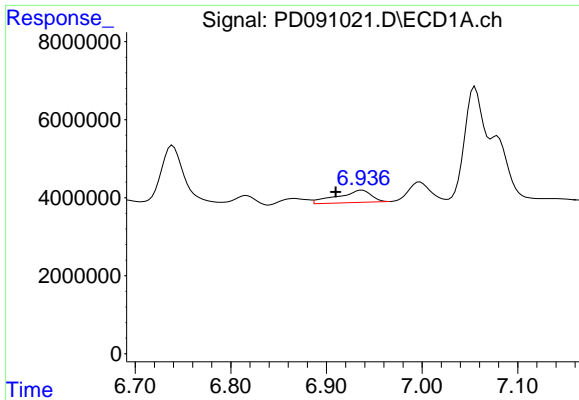
#17 4,4'-DDT

R.T.: 6.998 min  
 Delta R.T.: -0.017 min  
 Response: 6943436  
 Conc: 1.69 ng/ml



#17 4,4'-DDT

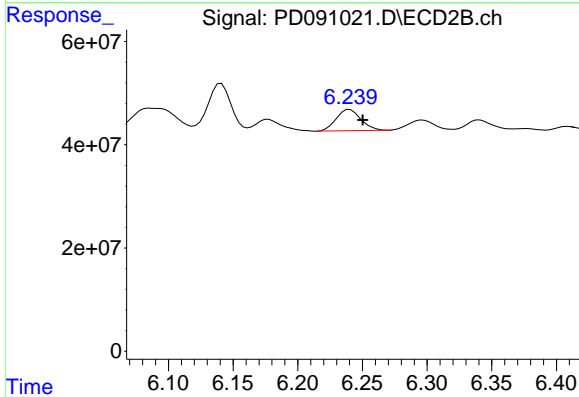
R.T.: 6.178 min  
 Delta R.T.: 0.004 min  
 Response: 31658660  
 Conc: 0.90 ng/ml



#18 Endrin aldehyde

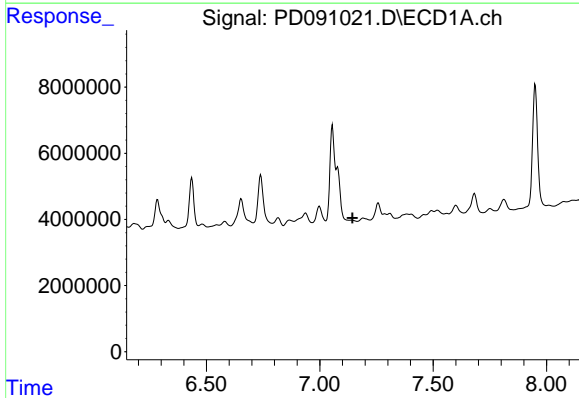
R.T.: 6.937 min  
 Delta R.T.: 0.027 min  
 Response: 7680751  
 Conc: 2.10 ng/ml

Instrument :  
 ECD\_D  
 ClientSampleId :



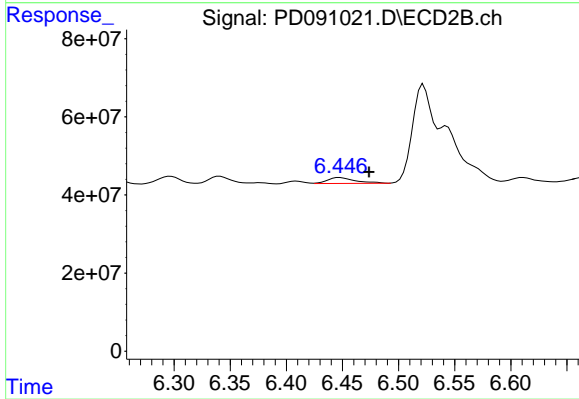
#18 Endrin aldehyde

R.T.: 6.240 min  
 Delta R.T.: -0.010 min  
 Response: 54608655  
 Conc: 1.97 ng/ml



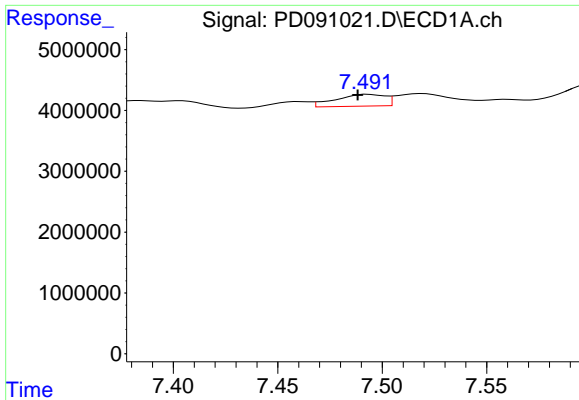
#19 Endosulfan Sulfate

R.T.: 0.000 min  
 Exp R.T. : 7.145 min  
 Response: 0  
 Conc: N.D.



#19 Endosulfan Sulfate

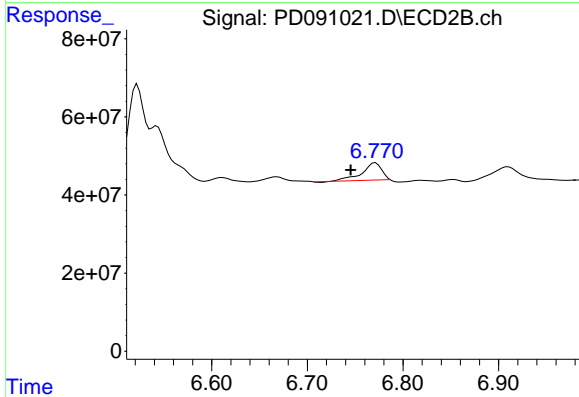
R.T.: 6.448 min  
 Delta R.T.: -0.026 min  
 Response: 25910684  
 Conc: 0.72 ng/ml



#20 Methoxychlor

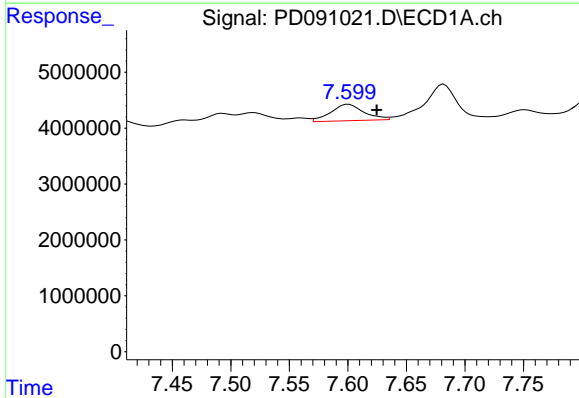
R.T.: 7.493 min  
 Delta R.T.: 0.005 min  
 Response: 3193215  
 Conc: 1.50 ng/ml

Instrument :  
 ECD\_D  
 ClientSampleId :



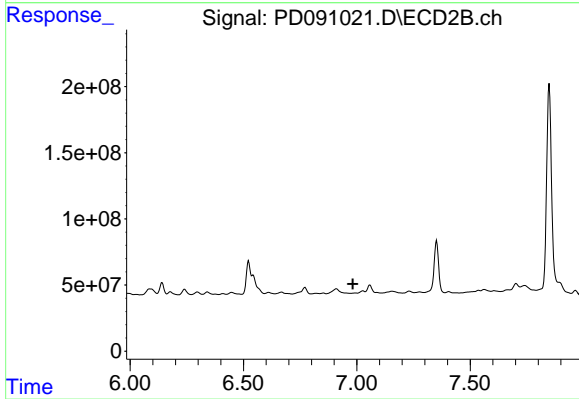
#20 Methoxychlor

R.T.: 6.771 min  
 Delta R.T.: 0.026 min  
 Response: 62615093  
 Conc: 3.59 ng/ml



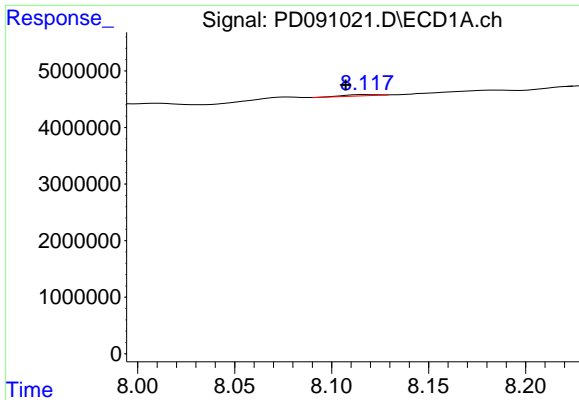
#21 Endrin ketone

R.T.: 7.601 min  
 Delta R.T.: -0.024 min  
 Response: 5792643  
 Conc: 1.19 ng/ml



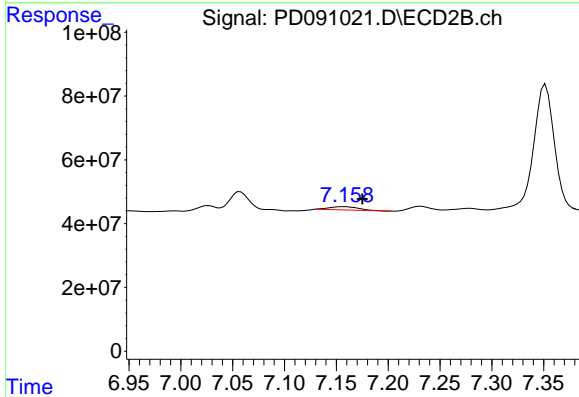
#21 Endrin ketone

R.T.: 6.994 min  
 Delta R.T.: 0.012 min  
 Response: -2899856  
 Conc: N.D.

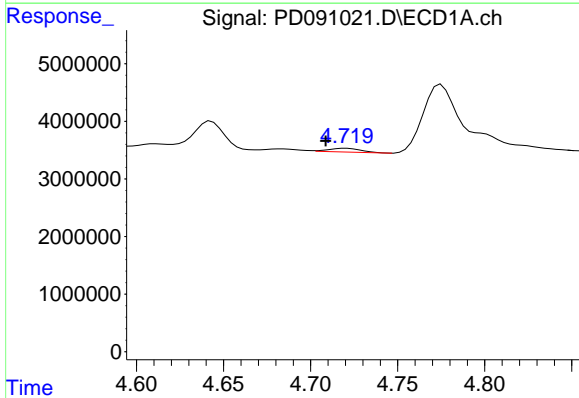


#22 Mirex  
 R.T.: 8.118 min  
 Delta R.T.: 0.011 min  
 Response: 260876  
 Conc: 0.08 ng/ml

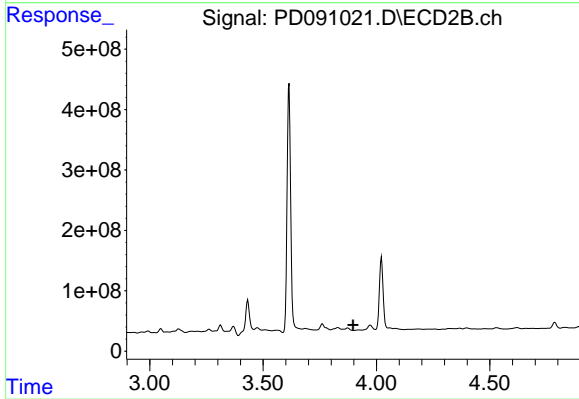
Instrument :  
 ECD\_D  
 ClientSampleId :



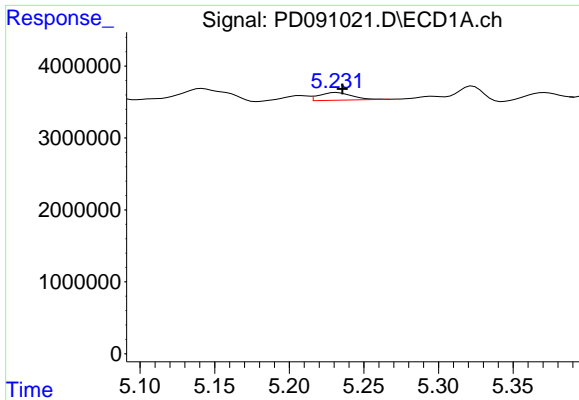
#22 Mirex  
 R.T.: 7.157 min  
 Delta R.T.: -0.018 min  
 Response: 20208854  
 Conc: 0.79 ng/ml



#23 Chlordane-1  
 R.T.: 4.721 min  
 Delta R.T.: 0.012 min  
 Response: 827012  
 Conc: 4.38 ng/ml



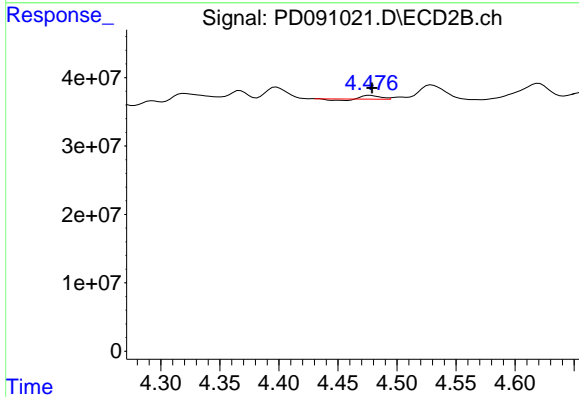
#23 Chlordane-1  
 R.T.: 3.922 min  
 Delta R.T.: 0.024 min  
 Response: -20803881  
 Conc: N.D.



#24 Chlordane-2

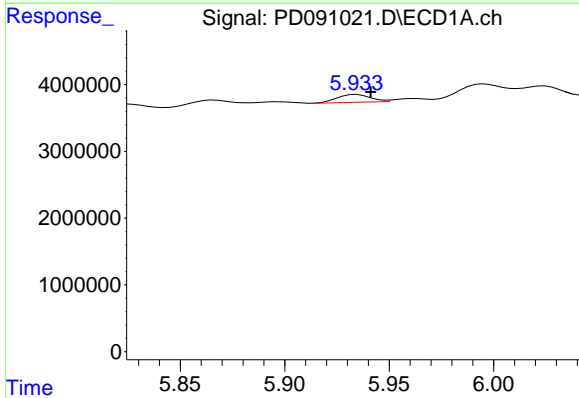
R.T.: 5.232 min  
 Delta R.T.: -0.004 min  
 Response: 1614035  
 Conc: 8.36 ng/ml

Instrument :  
 ECD\_D  
 ClientSampleId :



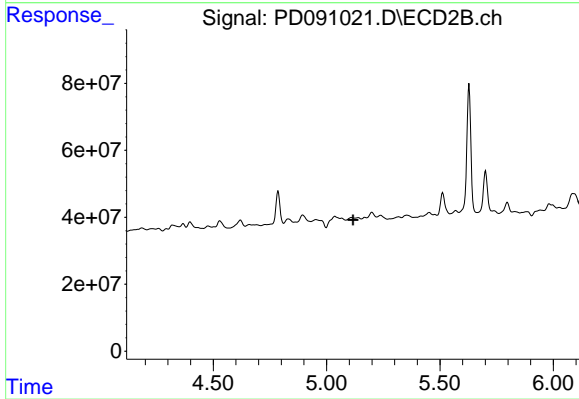
#24 Chlordane-2

R.T.: 4.477 min  
 Delta R.T.: -0.001 min  
 Response: 3698802  
 Conc: 2.84 ng/ml



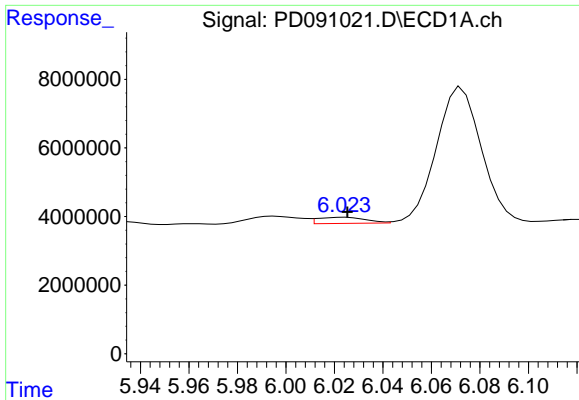
#25 Chlordane-3

R.T.: 5.934 min  
 Delta R.T.: -0.007 min  
 Response: 1276101  
 Conc: 1.67 ng/ml



#25 Chlordane-3

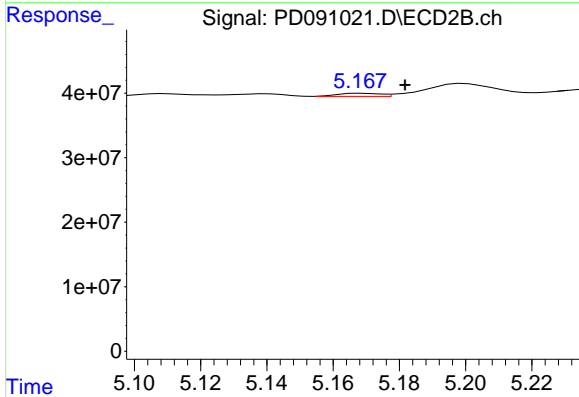
R.T.: 5.109 min  
 Delta R.T.: -0.008 min  
 Response: -1276765  
 Conc: N.D.



#26 Chlordane-4

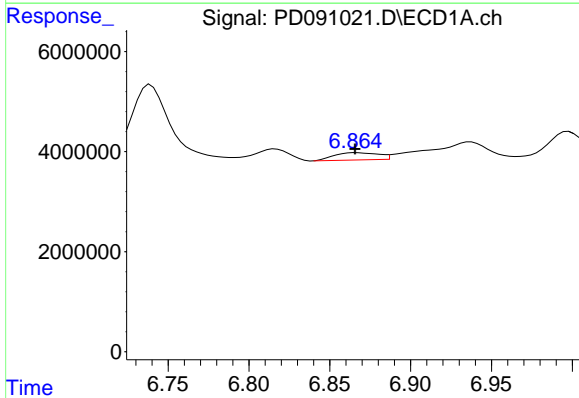
R.T.: 6.024 min  
 Delta R.T.: -0.001 min  
 Response: 2486699  
 Conc: 2.57 ng/ml

Instrument :  
 ECD\_D  
 ClientSampleId :



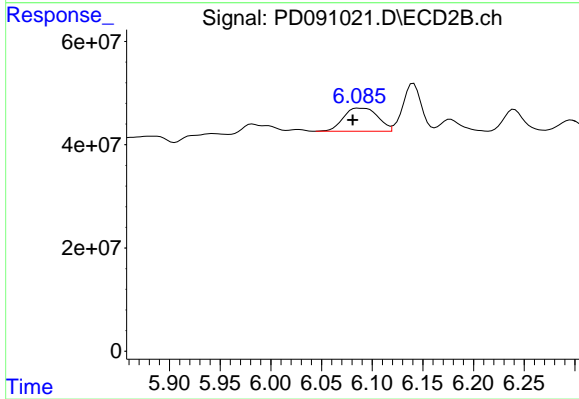
#26 Chlordane-4

R.T.: 5.169 min  
 Delta R.T.: -0.013 min  
 Response: 4305113  
 Conc: 1.29 ng/ml



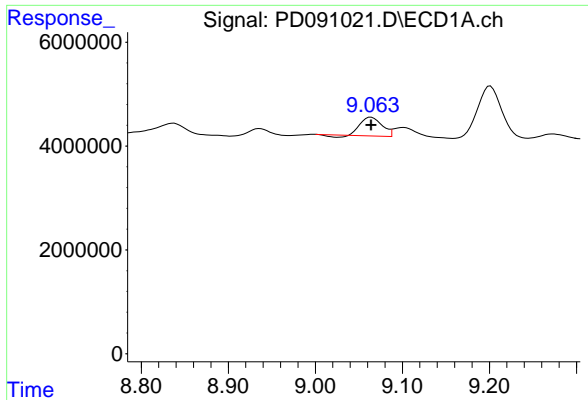
#27 Chlordane-5

R.T.: 6.867 min  
 Delta R.T.: 0.001 min  
 Response: 2791592  
 Conc: 18.58 ng/ml



#27 Chlordane-5

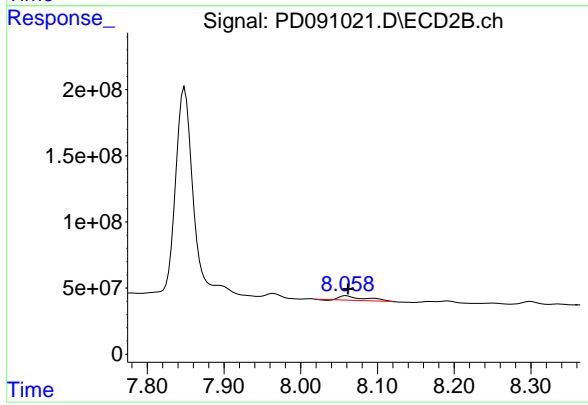
R.T.: 6.087 min  
 Delta R.T.: 0.006 min  
 Response: 105550655  
 Conc: 71.51 ng/ml



#28 Decachlorobiphenyl

R.T.: 9.064 min  
Delta R.T.: 0.000 min  
Response: 5878775  
Conc: 1.26 ng/ml

Instrument :  
ECD\_D  
ClientSampleId :



#28 Decachlorobiphenyl

R.T.: 8.060 min  
Delta R.T.: -0.002 min  
Response: 71504006  
Conc: 2.36 ng/ml