

Data Path : Z:\pestpcbsrv\HPCHEM1\ECD\_D\Data\PD110725\  
 Data File : PD091022.D  
 Signal(s) : Signal #1: ECD1A.ch Signal #2: ECD2B.ch  
 Acq On : 07 Nov 2025 11:20  
 Operator : AR\AJ  
 Sample : Q3541-01RE  
 Misc :  
 ALS Vial : 9 Sample Multiplier: 1

Instrument :  
 ECD\_D  
 ClientSampleId :

Integration File signal 1: autoint1.e  
 Integration File signal 2: autoint2.e  
 Quant Time: Nov 08 02:44:07 2025  
 Quant Method : Z:\pestpcbsrv\HPCHEM1\ECD\_D\Method\PD101725.M  
 Quant Title : GC Extractables  
 QLast Update : Fri Oct 17 17:43:28 2025  
 Response via : Initial Calibration  
 Integrator: ChemStation

Volume Inj. : 1 µl  
 Signal #1 Phase : ZB-MR2 Signal #2 Phase: ZB-MR2  
 Signal #1 Info : 30M x 0.32mm x0.5 Signal #2 Info : 30M x 0.32mm x 0.25µm

Compound	RT#1	RT#2	Resp#1	Resp#2	ng/ml	ng/ml
System Monitoring Compounds						
1) SA Tetrachlo...	3.544	2.874	53782194	434.2E6	17.270	14.582
28) SA Decachlor...	9.064	8.059	30785831	189.3E6	6.581	6.249
Target Compounds						
2) A alpha-BHC	3.999	3.375	188651	3528606	0.026	0.069 #
4) MA Heptachlor	4.905f	4.085	4537393	14619488	0.812	0.328 #
5) MB Aldrin	5.287f	4.357	436012	1226316	0.067	0.026 #
6) B beta-BHC	4.521	4.023	251677	16388205	0.096	0.826 #
7) B delta-BHC	4.772	4.238f	22671919	3833039	3.353	0.080 #
8) B Heptachlo...	5.697	4.852	10009243	8961711	1.729	0.210 #
9) A Endosulfan I	6.074	5.258f	2182834	35047527	0.394	0.890 #
10) B gamma-Chl...	0.000	5.125	0	2750519	N.D.	0.061 #
11) B alpha-Chl...	6.036f	5.171	3450222	74959360	0.558	1.738 #
12) B 4,4'-DDE	6.207f	5.368	528269	4180322	0.099	0.095
13) MA Dieldrin	6.359f	5.505	618844	8697870	0.106	0.197 #
14) MA Endrin	6.583	5.776	607252	8235869	0.123	0.203 #
15) B Endosulfa...	6.765f	6.089f	2284867	9112637	0.457	0.243 #
17) MA 4,4'-DDT	6.997f	0.000	1598211	0	0.389	N.D. #
18) B Endrin al...	6.916	6.242	1754757	6297016	0.479	0.227 #
19) B Endosulfa...	0.000	6.459	0	3326778	N.D.	0.093 #
20) A Methoxychlor	0.000	6.733	0	2551125	N.D.	0.146 #
21) B Endrin ke...	7.605f	6.962f	2388478	6432798	0.492	0.171 #
22) Mirex	8.105	7.186	284704	778492	0.089	0.030 #
23) Chlordane-1	0.000	3.898	0	11764017	N.D.	9.439 #
24) Chlordane-2	5.240	4.451f	2818776	17934516	14.595	13.748
25) Chlordane-3	0.000	5.125	0	2750519	N.D.	0.707 #
26) Chlordane-4	6.036	5.171	3450222	74959360	3.561	22.435 #
27) Chlordane-5	6.862	6.089	656138	9112637	4.367	6.174 #

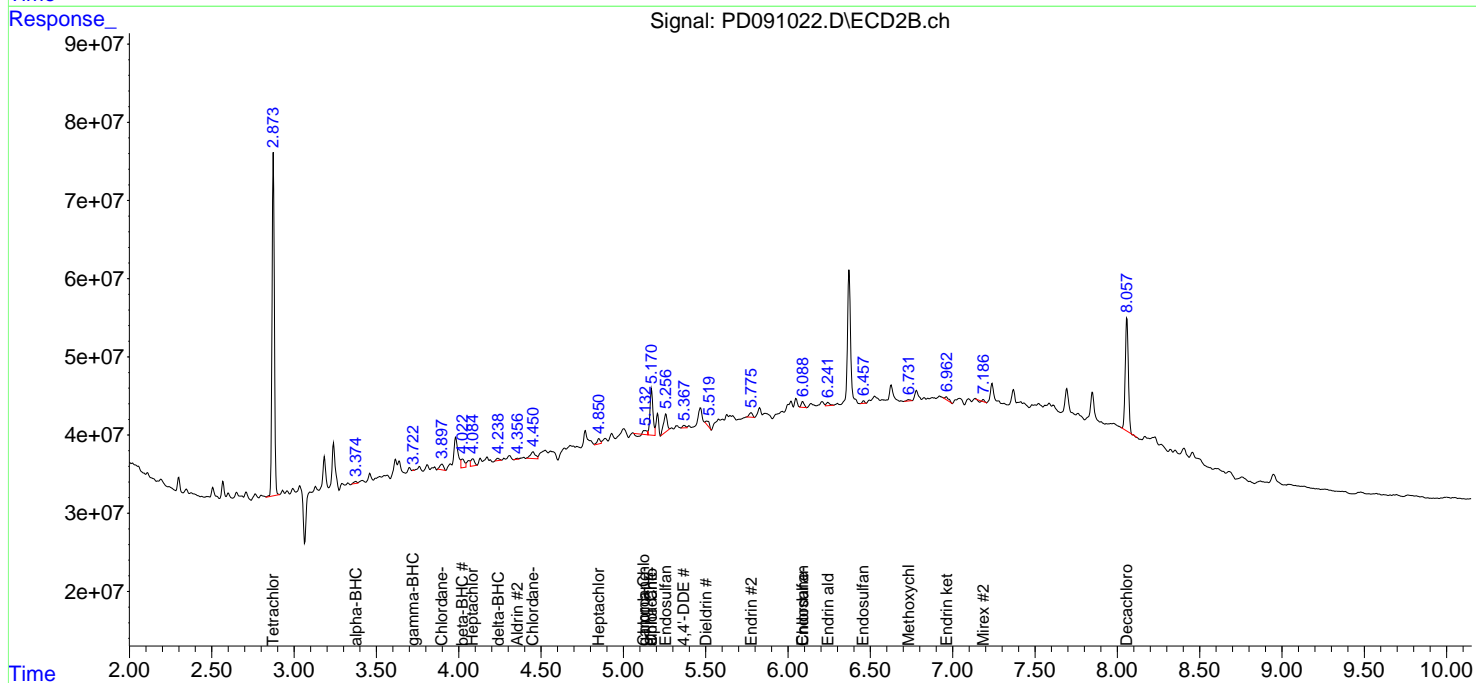
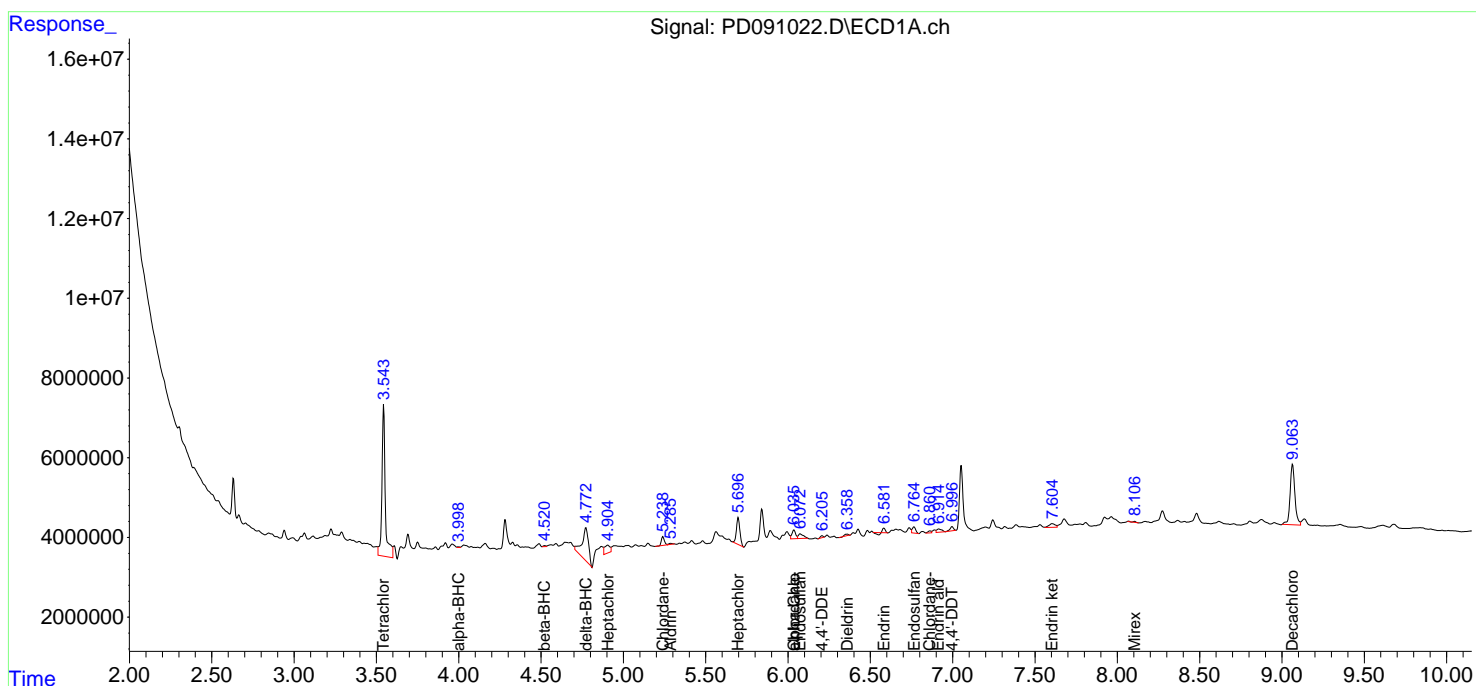
(f)=RT Delta > 1/2 Window (#)=Amounts differ by > 25% (m)=manual int.

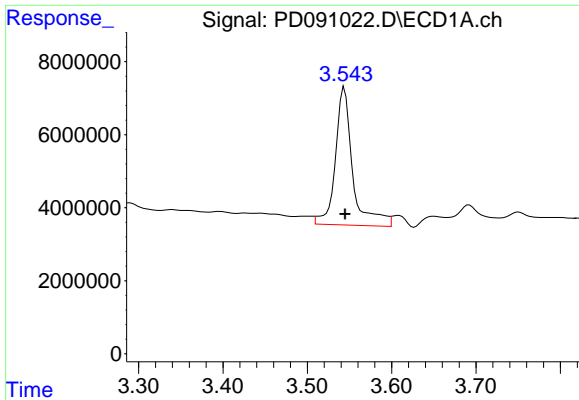
Data Path : Z:\pestpcbsrv\HPCHEM1\ECD\_D\Data\PD110725\  
 Data File : PD091022.D  
 Signal(s) : Signal #1: ECD1A.ch Signal #2: ECD2B.ch  
 Acq On : 07 Nov 2025 11:20  
 Operator : AR\AJ  
 Sample : Q3541-01RE  
 Misc :  
 ALS Vial : 9 Sample Multiplier: 1

Instrument :  
 ECD\_D  
 ClientSampleId :

Integration File signal 1: autoint1.e  
 Integration File signal 2: autoint2.e  
 Quant Time: Nov 08 02:44:07 2025  
 Quant Method : Z:\pestpcbsrv\HPCHEM1\ECD\_D\Method\PD101725.M  
 Quant Title : GC Extractables  
 QLast Update : Fri Oct 17 17:43:28 2025  
 Response via : Initial Calibration  
 Integrator: ChemStation

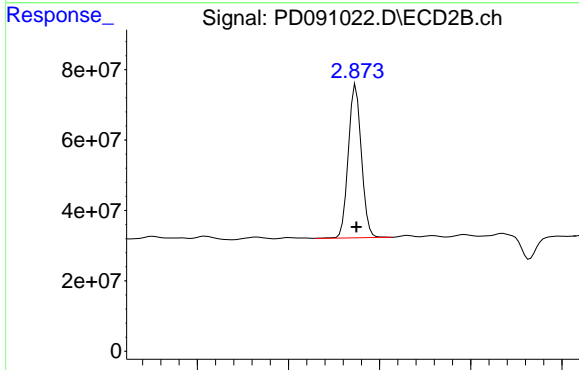
Volume Inj. : 1 µl  
 Signal #1 Phase : ZB-MR1 Signal #2 Phase: ZB-MR2  
 Signal #1 Info : 30M x 0.32mm x0.5 Signal #2 Info : 30M x 0.32mm x 0.25µm



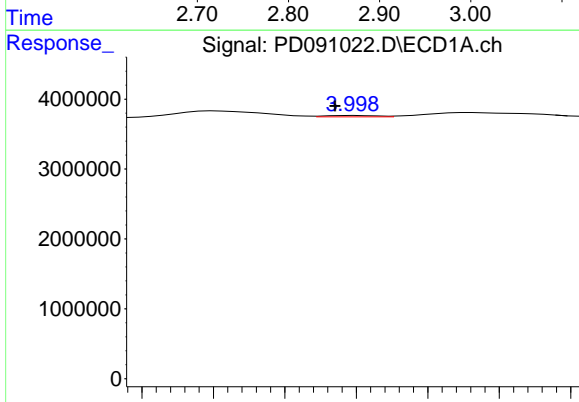


#1 Tetrachloro-m-xylene  
 R.T.: 3.544 min  
 Delta R.T.: 0.000 min  
 Response: 53782194  
 Conc: 17.27 ng/ml

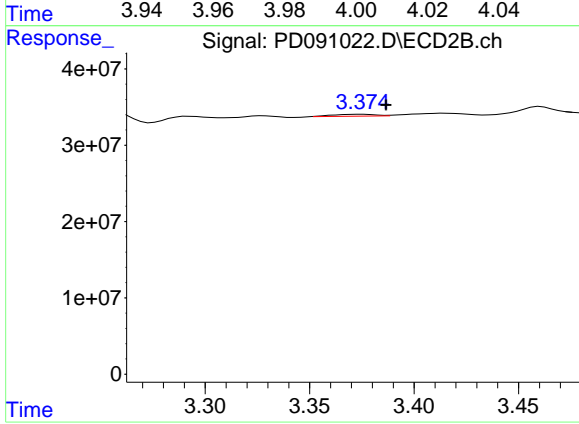
Instrument :  
 ECD\_D  
 ClientSampleId :



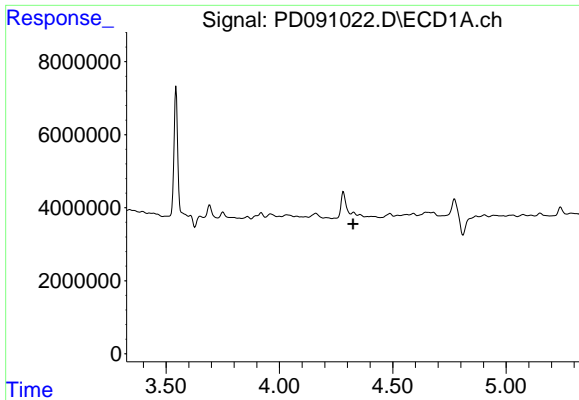
#1 Tetrachloro-m-xylene  
 R.T.: 2.874 min  
 Delta R.T.: 0.000 min  
 Response: 434203213  
 Conc: 14.58 ng/ml



#2 alpha-BHC  
 R.T.: 3.999 min  
 Delta R.T.: 0.005 min  
 Response: 188651  
 Conc: 0.03 ng/ml

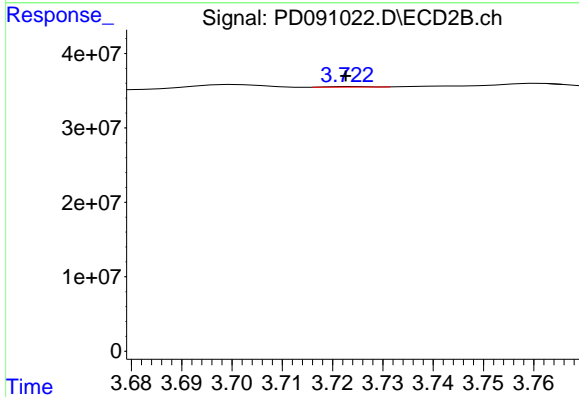


#2 alpha-BHC  
 R.T.: 3.375 min  
 Delta R.T.: -0.011 min  
 Response: 3528606  
 Conc: 0.07 ng/ml

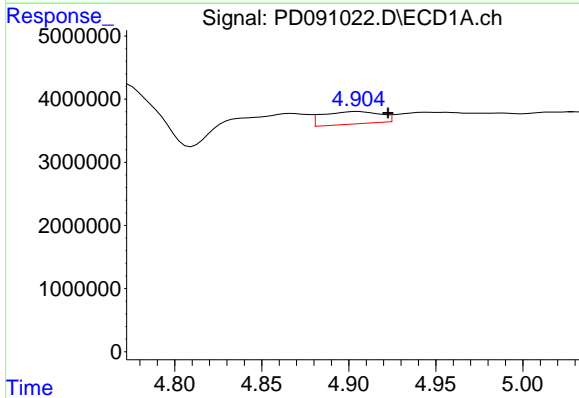


#3 gamma-BHC (Lindane)  
 R.T.: 4.328 min  
 Delta R.T.: 0.003 min  
 Response: -2892891  
 Conc: N.D.

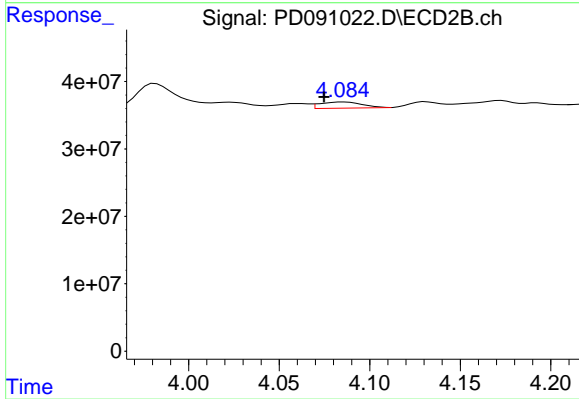
Instrument :  
 ECD\_D  
 ClientSampleId :



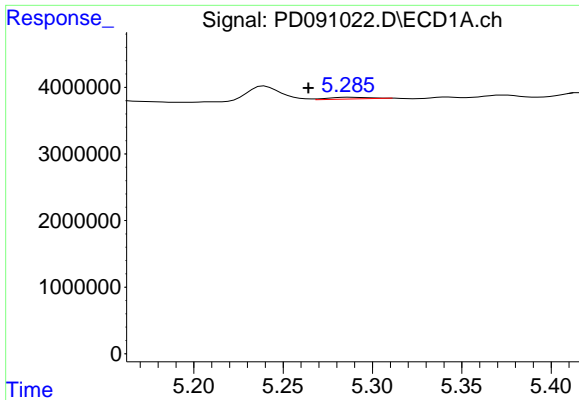
#3 gamma-BHC (Lindane)  
 R.T.: 3.725 min  
 Delta R.T.: 0.002 min  
 Response: 344145  
 Conc: 0.01 ng/ml



#4 Heptachlor  
 R.T.: 4.905 min  
 Delta R.T.: -0.018 min  
 Response: 4537393  
 Conc: 0.81 ng/ml

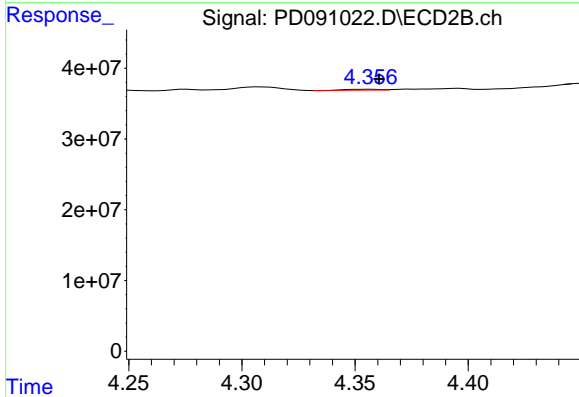


#4 Heptachlor  
 R.T.: 4.085 min  
 Delta R.T.: 0.010 min  
 Response: 14619488  
 Conc: 0.33 ng/ml

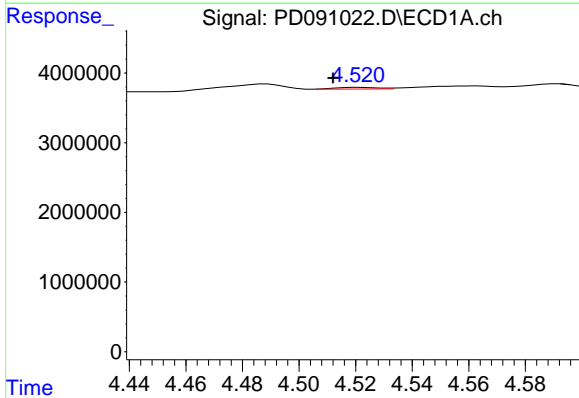


#5 Aldrin  
 R.T.: 5.287 min  
 Delta R.T.: 0.023 min  
 Response: 436012  
 Conc: 0.07 ng/ml

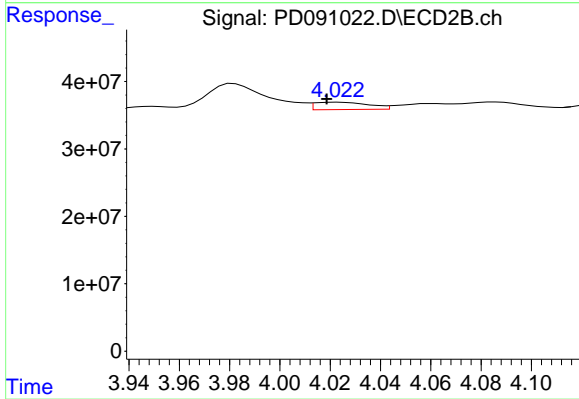
Instrument :  
 ECD\_D  
 ClientSampleId :



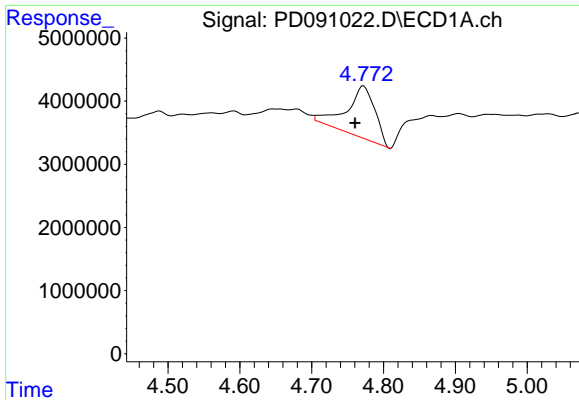
#5 Aldrin  
 R.T.: 4.357 min  
 Delta R.T.: -0.003 min  
 Response: 1226316  
 Conc: 0.03 ng/ml



#6 beta-BHC  
 R.T.: 4.521 min  
 Delta R.T.: 0.009 min  
 Response: 251677  
 Conc: 0.10 ng/ml



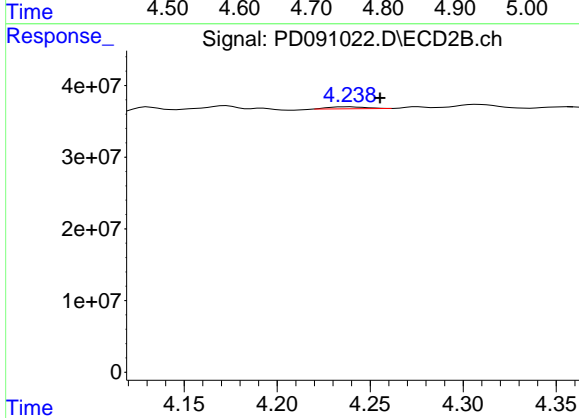
#6 beta-BHC  
 R.T.: 4.023 min  
 Delta R.T.: 0.004 min  
 Response: 16388205  
 Conc: 0.83 ng/ml



#7 delta-BHC

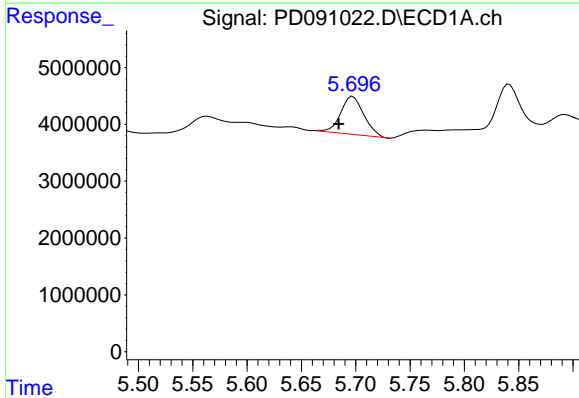
R.T.: 4.772 min  
 Delta R.T.: 0.012 min  
 Response: 22671919  
 Conc: 3.35 ng/ml

Instrument :  
 ECD\_D  
 ClientSampleId :



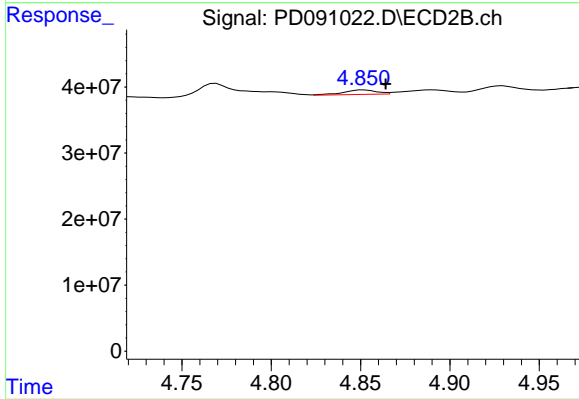
#7 delta-BHC

R.T.: 4.238 min  
 Delta R.T.: -0.017 min  
 Response: 3833039  
 Conc: 0.08 ng/ml



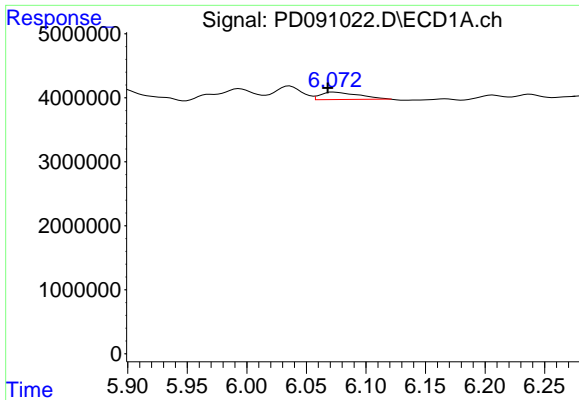
#8 Heptachlor epoxide

R.T.: 5.697 min  
 Delta R.T.: 0.013 min  
 Response: 10009243  
 Conc: 1.73 ng/ml



#8 Heptachlor epoxide

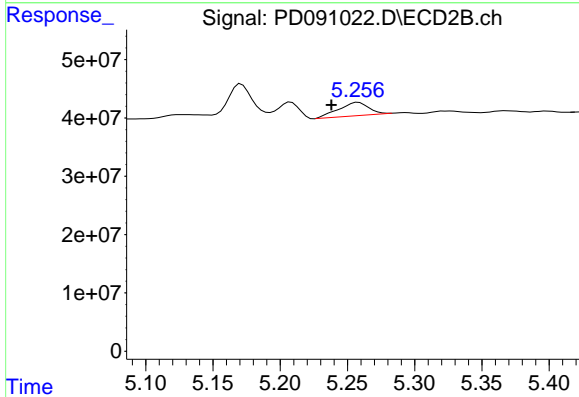
R.T.: 4.852 min  
 Delta R.T.: -0.012 min  
 Response: 8961711  
 Conc: 0.21 ng/ml



#9 Endosulfan I

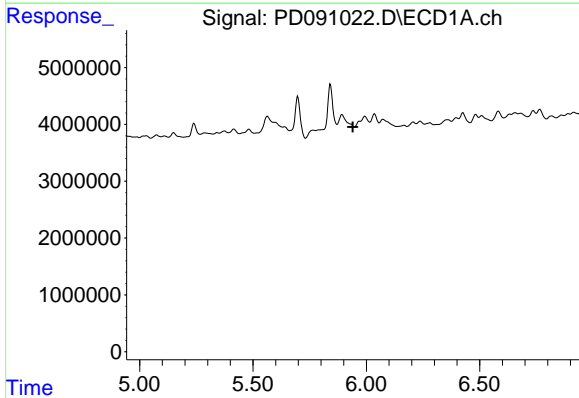
R.T.: 6.074 min  
 Delta R.T.: 0.006 min  
 Response: 2182834  
 Conc: 0.39 ng/ml

Instrument :  
 ECD\_D  
 ClientSampleId :



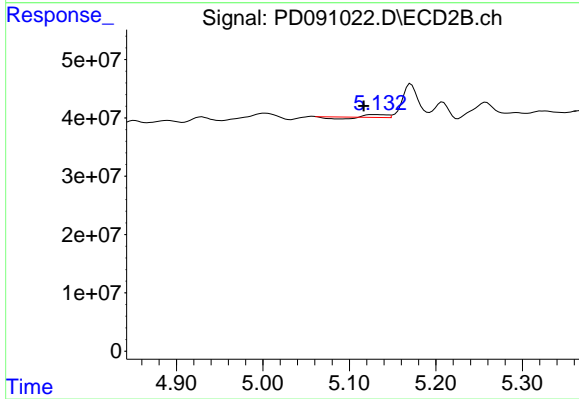
#9 Endosulfan I

R.T.: 5.258 min  
 Delta R.T.: 0.020 min  
 Response: 35047527  
 Conc: 0.89 ng/ml



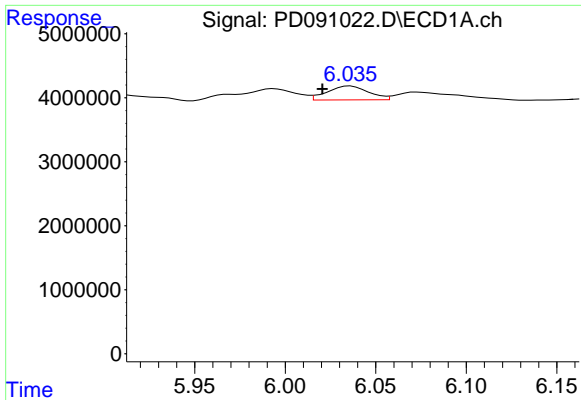
#10 gamma-Chlordane

R.T.: 0.000 min  
 Exp R.T. : 5.940 min  
 Response: 0  
 Conc: N.D.



#10 gamma-Chlordane

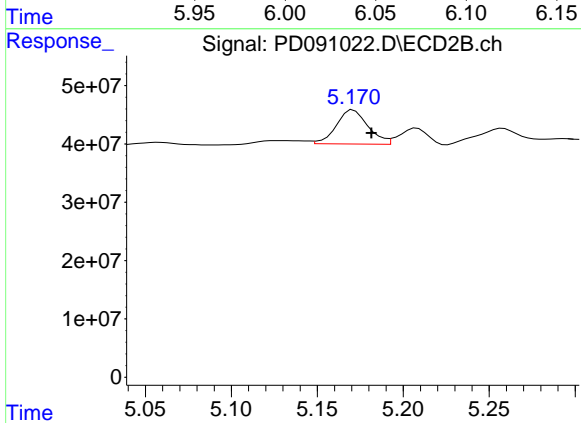
R.T.: 5.125 min  
 Delta R.T.: 0.009 min  
 Response: 2750519  
 Conc: 0.06 ng/ml



#11 alpha-Chlordane

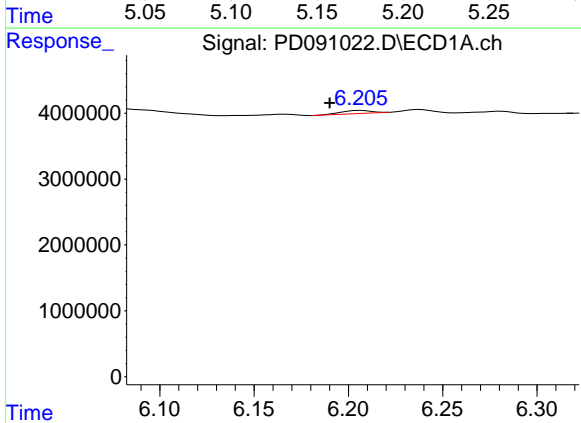
R.T.: 6.036 min  
 Delta R.T.: 0.015 min  
 Response: 3450222  
 Conc: 0.56 ng/ml

Instrument :  
 ECD\_D  
 ClientSampleId :



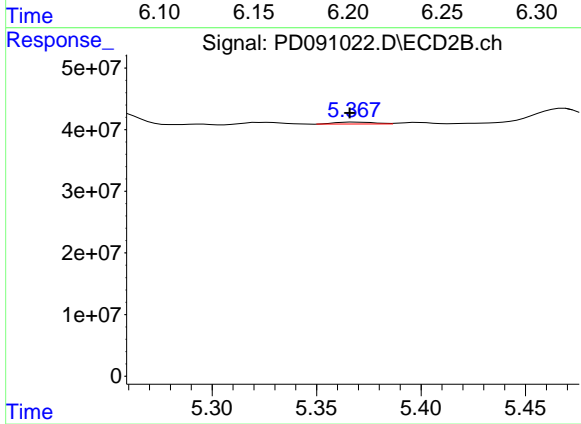
#11 alpha-Chlordane

R.T.: 5.171 min  
 Delta R.T.: -0.010 min  
 Response: 74959360  
 Conc: 1.74 ng/ml



#12 4,4'-DDE

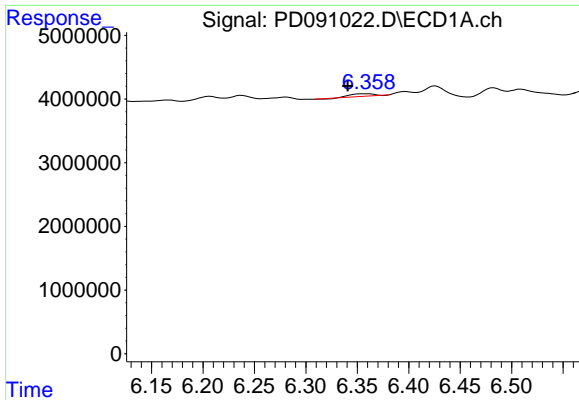
R.T.: 6.207 min  
 Delta R.T.: 0.017 min  
 Response: 528269  
 Conc: 0.10 ng/ml



#12 4,4'-DDE

R.T.: 5.368 min  
 Delta R.T.: 0.002 min  
 Response: 4180322  
 Conc: 0.10 ng/ml

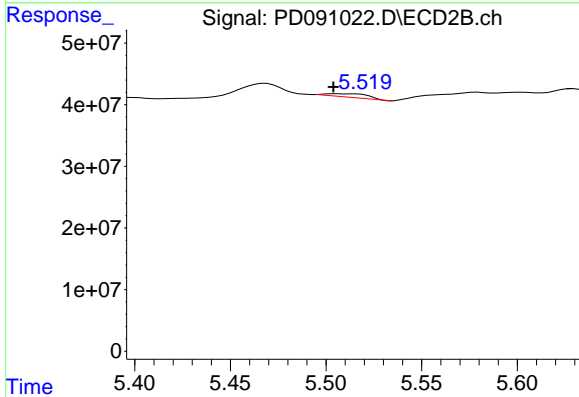




#13 Dieldrin

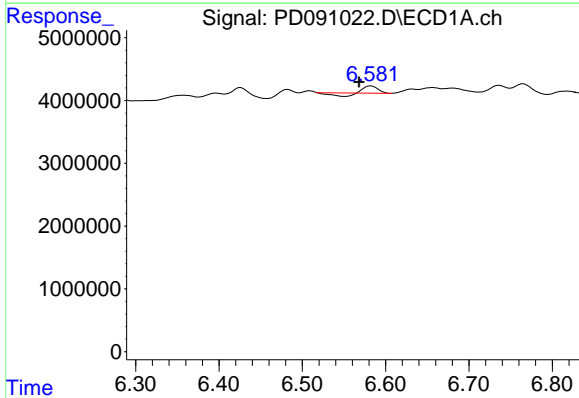
R.T.: 6.359 min  
 Delta R.T.: 0.018 min  
 Response: 618844  
 Conc: 0.11 ng/ml

Instrument :  
 ECD\_D  
 ClientSampleId :



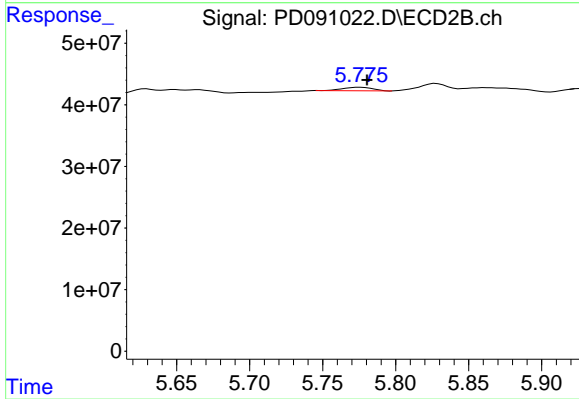
#13 Dieldrin

R.T.: 5.505 min  
 Delta R.T.: 0.001 min  
 Response: 8697870  
 Conc: 0.20 ng/ml



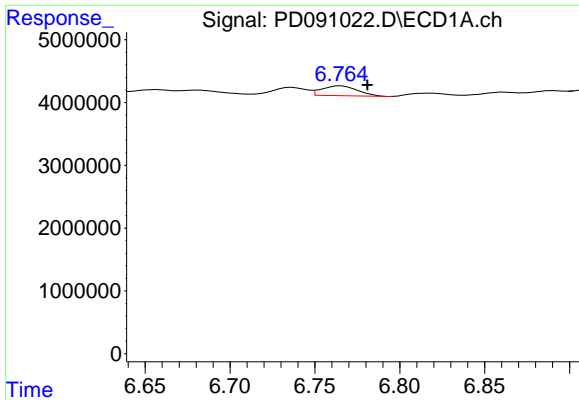
#14 Endrin

R.T.: 6.583 min  
 Delta R.T.: 0.014 min  
 Response: 607252  
 Conc: 0.12 ng/ml



#14 Endrin

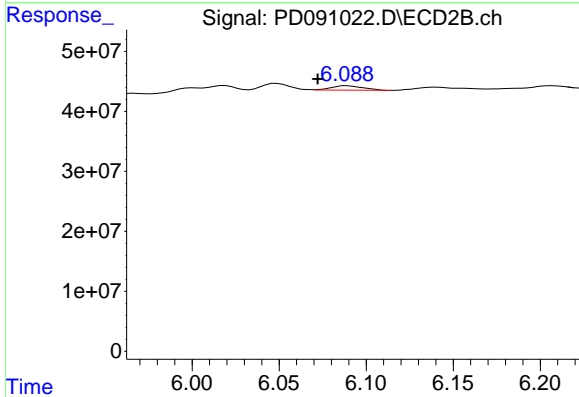
R.T.: 5.776 min  
 Delta R.T.: -0.005 min  
 Response: 8235869  
 Conc: 0.20 ng/ml



#15 Endosulfan II

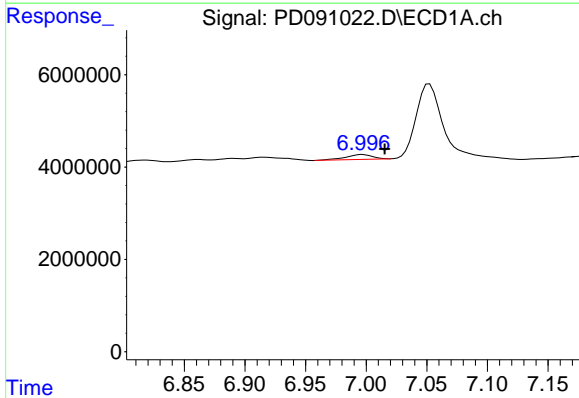
R.T.: 6.765 min  
 Delta R.T.: -0.016 min  
 Response: 2284867  
 Conc: 0.46 ng/ml

Instrument :  
 ECD\_D  
 ClientSampleId :



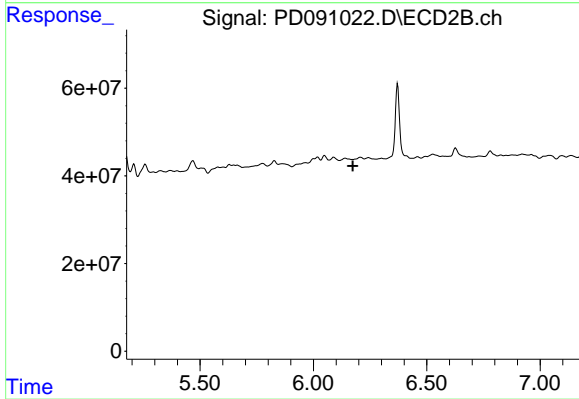
#15 Endosulfan II

R.T.: 6.089 min  
 Delta R.T.: 0.017 min  
 Response: 9112637  
 Conc: 0.24 ng/ml



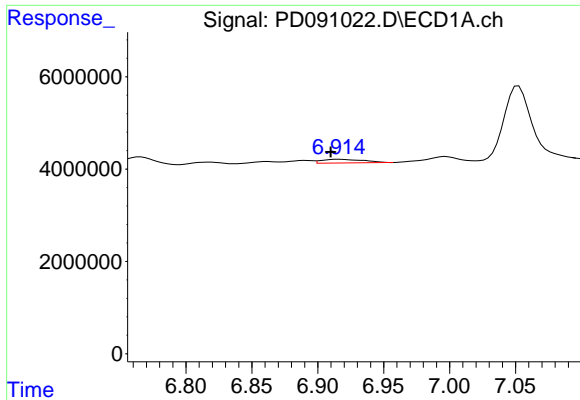
#17 4,4'-DDT

R.T.: 6.997 min  
 Delta R.T.: -0.018 min  
 Response: 1598211  
 Conc: 0.39 ng/ml



#17 4,4'-DDT

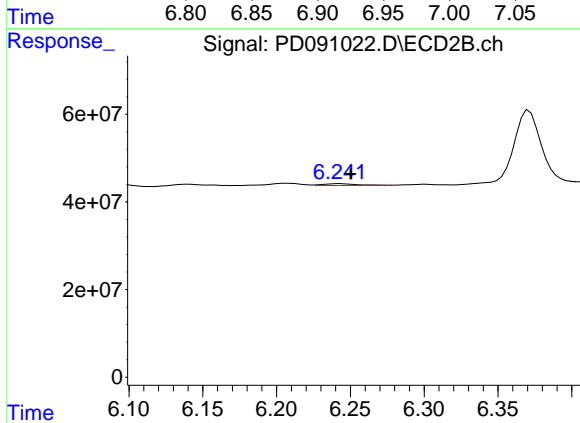
R.T.: 0.000 min  
 Exp R.T. : 6.174 min  
 Response: 0  
 Conc: N.D.



#18 Endrin aldehyde

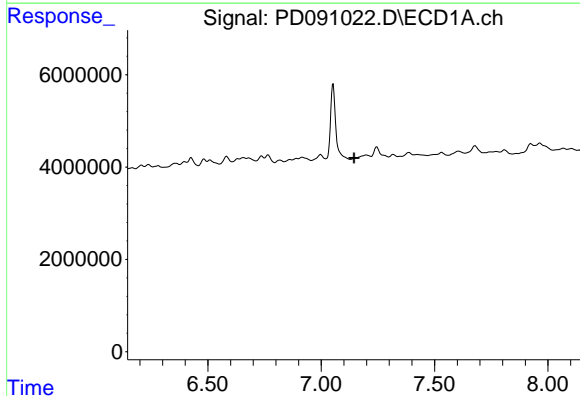
R.T.: 6.916 min  
 Delta R.T.: 0.006 min  
 Response: 1754757  
 Conc: 0.48 ng/ml

Instrument :  
 ECD\_D  
 ClientSampleId :



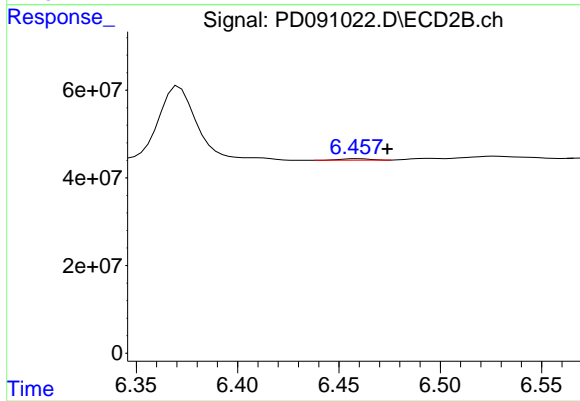
#18 Endrin aldehyde

R.T.: 6.242 min  
 Delta R.T.: -0.008 min  
 Response: 6297016  
 Conc: 0.23 ng/ml



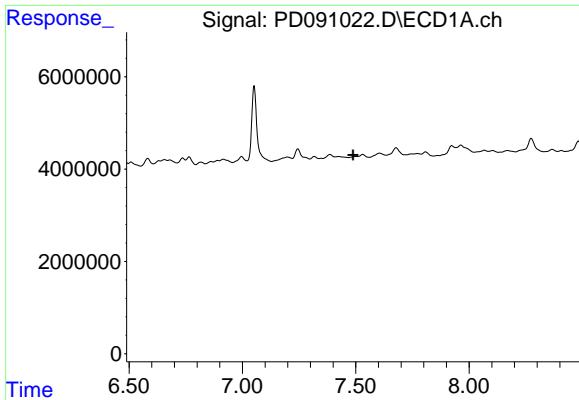
#19 Endosulfan Sulfate

R.T.: 0.000 min  
 Exp R.T. : 7.145 min  
 Response: 0  
 Conc: N.D.



#19 Endosulfan Sulfate

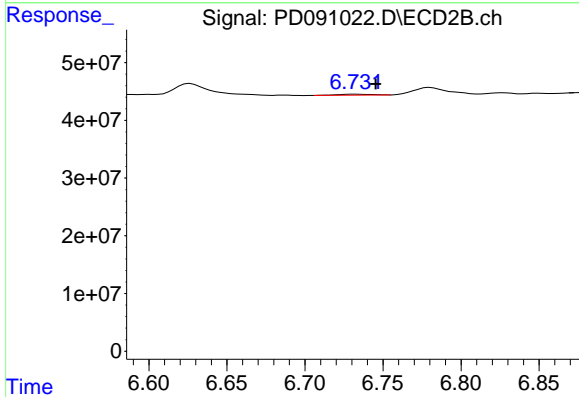
R.T.: 6.459 min  
 Delta R.T.: -0.015 min  
 Response: 3326778  
 Conc: 0.09 ng/ml



#20 Methoxychlor

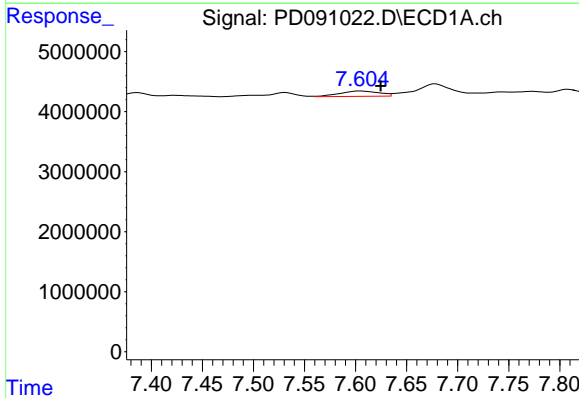
R.T.: 0.000 min  
 Exp R.T.: 7.488 min  
 Response: 0  
 Conc: N.D.

Instrument :  
 ECD\_D  
 ClientSampleId :



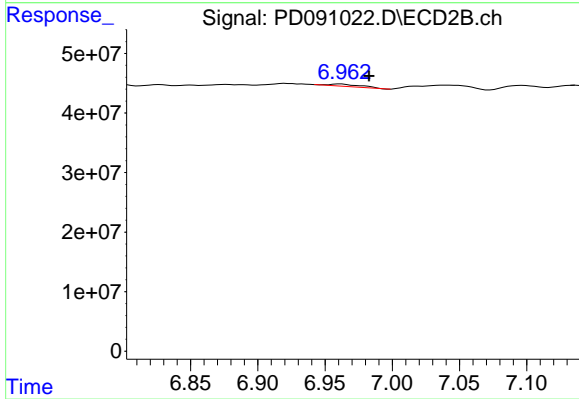
#20 Methoxychlor

R.T.: 6.733 min  
 Delta R.T.: -0.013 min  
 Response: 2551125  
 Conc: 0.15 ng/ml



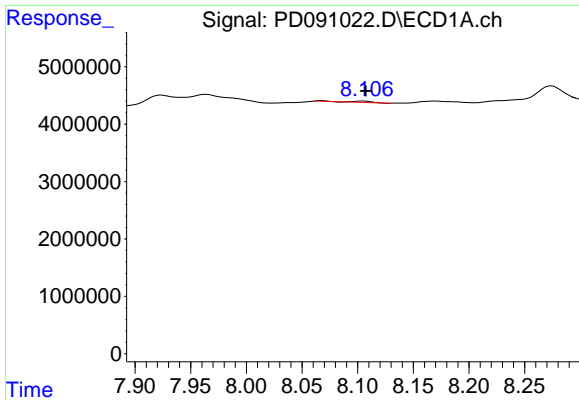
#21 Endrin ketone

R.T.: 7.605 min  
 Delta R.T.: -0.020 min  
 Response: 2388478  
 Conc: 0.49 ng/ml



#21 Endrin ketone

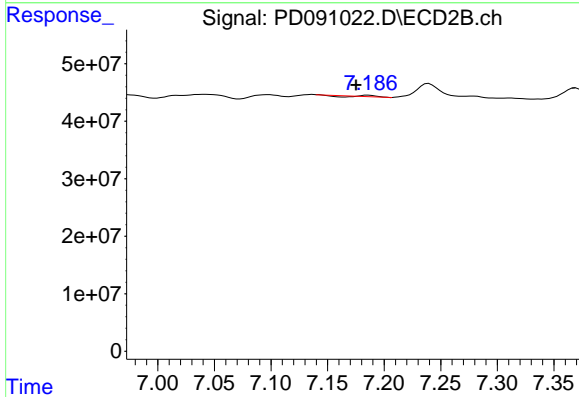
R.T.: 6.962 min  
 Delta R.T.: -0.021 min  
 Response: 6432798  
 Conc: 0.17 ng/ml



#22 Mirex

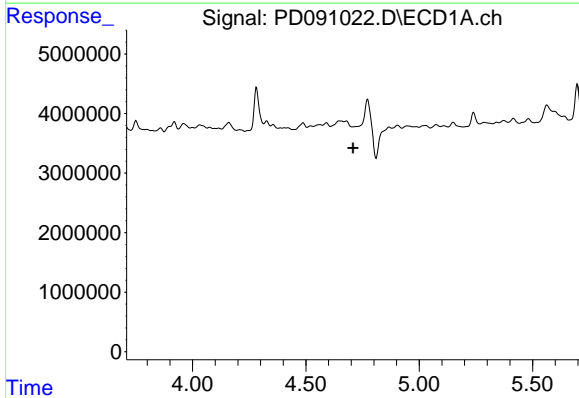
R.T.: 8.105 min  
 Delta R.T.: -0.002 min  
 Response: 284704  
 Conc: 0.09 ng/ml

Instrument :  
 ECD\_D  
 ClientSampleId :



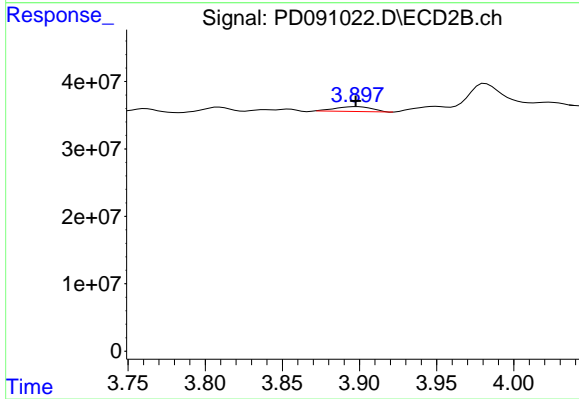
#22 Mirex

R.T.: 7.186 min  
 Delta R.T.: 0.011 min  
 Response: 778492  
 Conc: 0.03 ng/ml



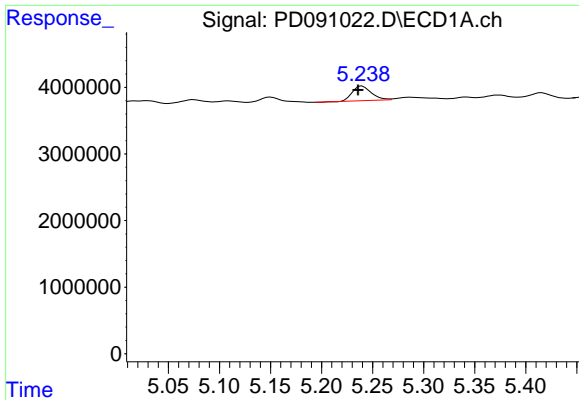
#23 Chlordane-1

R.T.: 0.000 min  
 Exp R.T. : 4.709 min  
 Response: 0  
 Conc: N.D.



#23 Chlordane-1

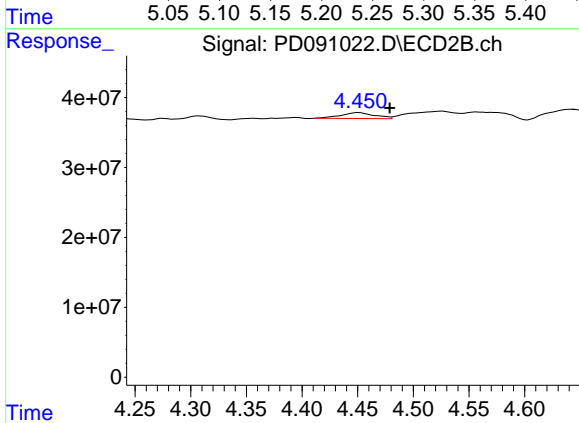
R.T.: 3.898 min  
 Delta R.T.: 0.000 min  
 Response: 11764017  
 Conc: 9.44 ng/ml



#24 Chlordane-2

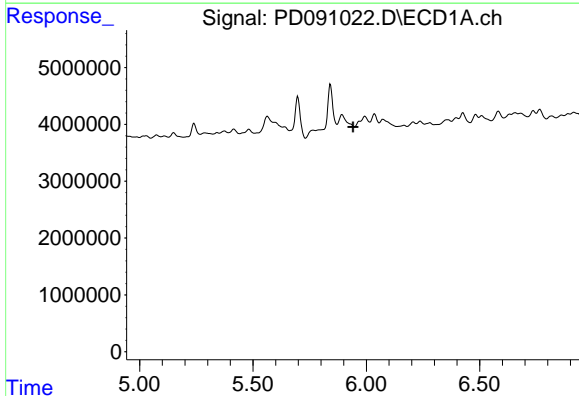
R.T.: 5.240 min  
 Delta R.T.: 0.004 min  
 Response: 2818776  
 Conc: 14.60 ng/ml

Instrument :  
 ECD\_D  
 ClientSampleId :



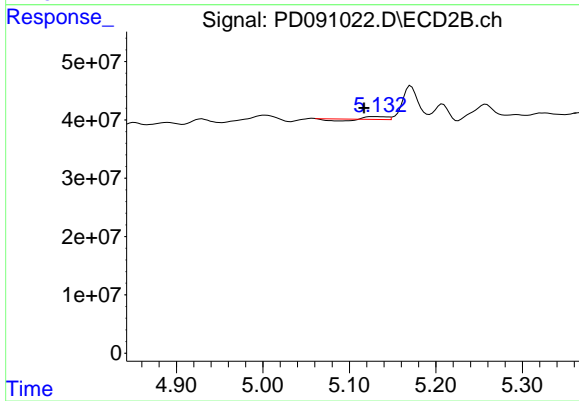
#24 Chlordane-2

R.T.: 4.451 min  
 Delta R.T.: -0.027 min  
 Response: 17934516  
 Conc: 13.75 ng/ml



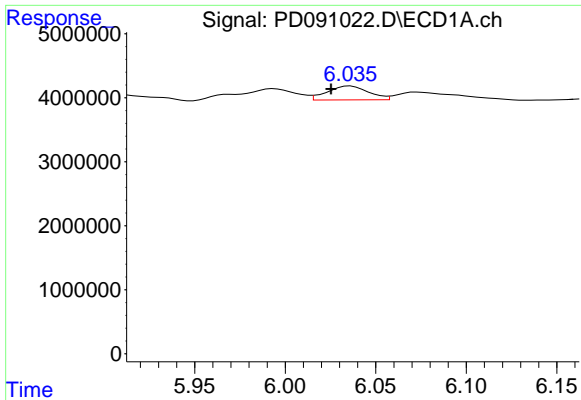
#25 Chlordane-3

R.T.: 0.000 min  
 Exp R.T. : 5.941 min  
 Response: 0  
 Conc: N.D.



#25 Chlordane-3

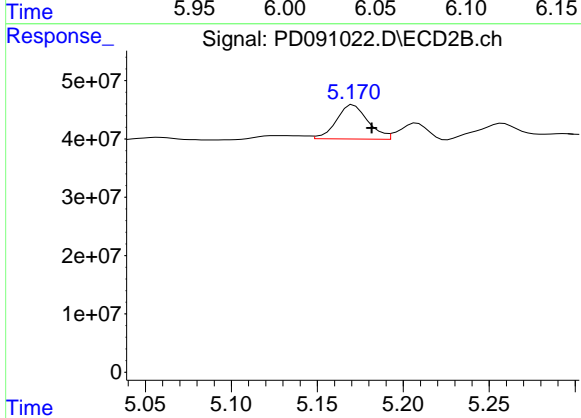
R.T.: 5.125 min  
 Delta R.T.: 0.008 min  
 Response: 2750519  
 Conc: 0.71 ng/ml



#26 Chlordane-4

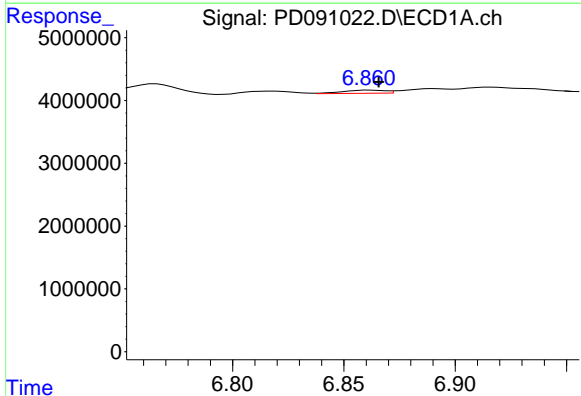
R.T.: 6.036 min  
 Delta R.T.: 0.011 min  
 Response: 3450222  
 Conc: 3.56 ng/ml

Instrument :  
 ECD\_D  
 ClientSampleId :



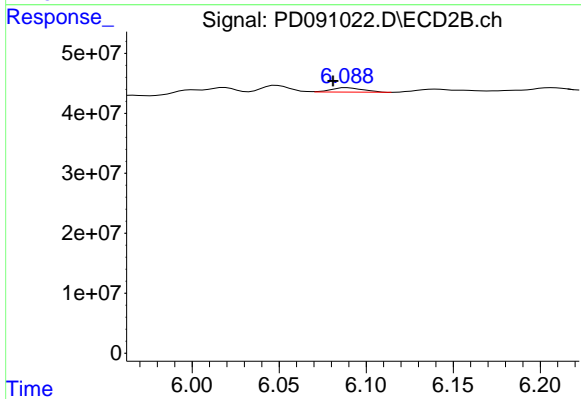
#26 Chlordane-4

R.T.: 5.171 min  
 Delta R.T.: -0.011 min  
 Response: 74959360  
 Conc: 22.43 ng/ml



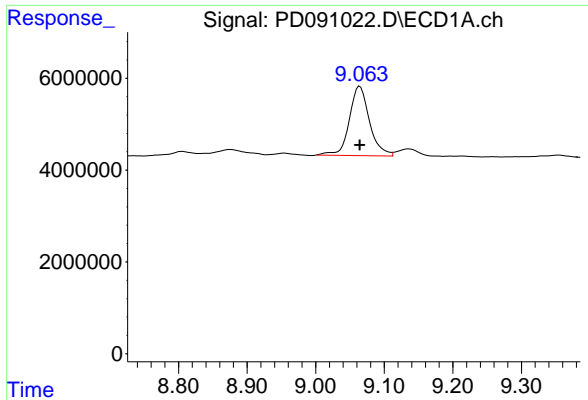
#27 Chlordane-5

R.T.: 6.862 min  
 Delta R.T.: -0.004 min  
 Response: 656138  
 Conc: 4.37 ng/ml



#27 Chlordane-5

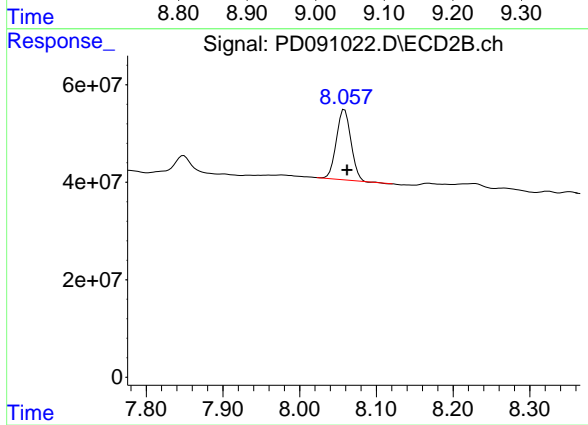
R.T.: 6.089 min  
 Delta R.T.: 0.008 min  
 Response: 9112637  
 Conc: 6.17 ng/ml



#28 Decachlorobiphenyl

R.T.: 9.064 min  
Delta R.T.: 0.000 min  
Response: 30785831  
Conc: 6.58 ng/ml

Instrument :  
ECD\_D  
ClientSampleId :



#28 Decachlorobiphenyl

R.T.: 8.059 min  
Delta R.T.: -0.003 min  
Response: 189295727  
Conc: 6.25 ng/ml