

Data Path : Z:\pestpcbsrv\HPCHEM1\ECD\_D\Data\PD110725\  
 Data File : PD091023.D  
 Signal(s) : Signal #1: ECD1A.ch Signal #2: ECD2B.ch  
 Acq On : 07 Nov 2025 12:39  
 Operator : AR\AJ  
 Sample : PB170426BSD  
 Misc :  
 ALS Vial : 10 Sample Multiplier: 1

Instrument :  
 ECD\_D  
 ClientSampleId :

Integration File signal 1: autoint1.e  
 Integration File signal 2: autoint2.e  
 Quant Time: Nov 08 02:44:55 2025  
 Quant Method : Z:\pestpcbsrv\HPCHEM1\ECD\_D\Method\PD101725.M  
 Quant Title : GC Extractables  
 QLast Update : Fri Oct 17 17:43:28 2025  
 Response via : Initial Calibration  
 Integrator: ChemStation

Volume Inj. : 1 µl  
 Signal #1 Phase : ZB-MR2 Signal #2 Phase: ZB-MR2  
 Signal #1 Info : 30M x 0.32mm x0.5 Signal #2 Info : 30M x 0.32mm x 0.25µm

	Compound	RT#1	RT#2	Resp#1	Resp#2	ng/ml	ng/ml
-----							
System Monitoring Compounds							
1)	SA Tetrachlo...	3.551	2.872	71759700	752.0E6	23.043	25.254
28)	SA Decachlor...	9.077	8.062	115.3E6	848.5E6	24.645	28.012
Target Compounds							
2)	A alpha-BHC	4.002	3.385	311.2E6	2280.1E6	43.365	44.625
3)	MA gamma-BHC...	4.333	3.721	287.4E6	2087.6E6	42.266	44.184
4)	MA Heptachlor	4.931	4.073	293.1E6	2048.3E6	52.440	45.923
5)	MB Aldrin	5.272	4.359	277.5E6	2039.4E6	42.389	44.029
6)	B beta-BHC	4.521	4.017	108.9E6	860.9E6	41.577	43.415
7)	B delta-BHC	4.769	4.254	293.7E6	2086.5E6	43.430	43.727
8)	B Heptachlo...	5.692	4.863	258.0E6	1841.6E6	44.564	43.190
9)	A Endosulfan I	6.077	5.237	239.5E6	1576.1E6	43.262	40.011
10)	B gamma-Chl...	5.948	5.116	253.6E6	1951.3E6	42.756	43.412
11)	B alpha-Chl...	6.029	5.181	257.4E6	1867.5E6	41.654	43.292
12)	B 4,4'-DDE	6.199	5.365	223.2E6	1956.3E6	41.897	44.627
13)	MA Dieldrin	6.349	5.503	254.9E6	1948.3E6	43.710	44.095
14)	MA Endrin	6.577	5.780	214.7E6	1878.8E6	43.348	46.396
15)	B Endosulfa...	6.789	6.072	239.4E6	1668.8E6	47.878	44.436
16)	A 4,4'-DDD	6.708	5.920	198.6E6	1652.9E6	48.979	45.362
17)	MA 4,4'-DDT	7.025	6.174	195.2E6	1632.6E6	47.488	46.550
18)	B Endrin al...	6.919	6.250	170.0E6	1276.4E6	46.404	46.091
19)	B Endosulfa...	7.153	6.474	202.6E6	1610.3E6	43.685	44.925
20)	A Methoxychlor	7.497	6.745	103.3E6	806.9E6	48.612	46.302
21)	B Endrin ke...	7.634	6.982	224.2E6	1375.1E6	46.138	36.458
22)	Mirex	8.116	7.175	140.4E6	1176.4E6	43.875	45.791
23)	Chlordane-1	4.720	3.891	331797	1891937	1.756	1.518
24)	Chlordane-2	0.000	4.499f	0	116.1E6	N.D.	88.960 #
25)	Chlordane-3	5.948	5.116	253.6E6	1951.3E6	332.465	501.418 #
26)	Chlordane-4	6.029	5.181	257.4E6	1867.5E6	265.699	558.933 #
27)	Chlordane-5	6.861	6.072	3196873	1668.8E6	21.276	1130.611 #

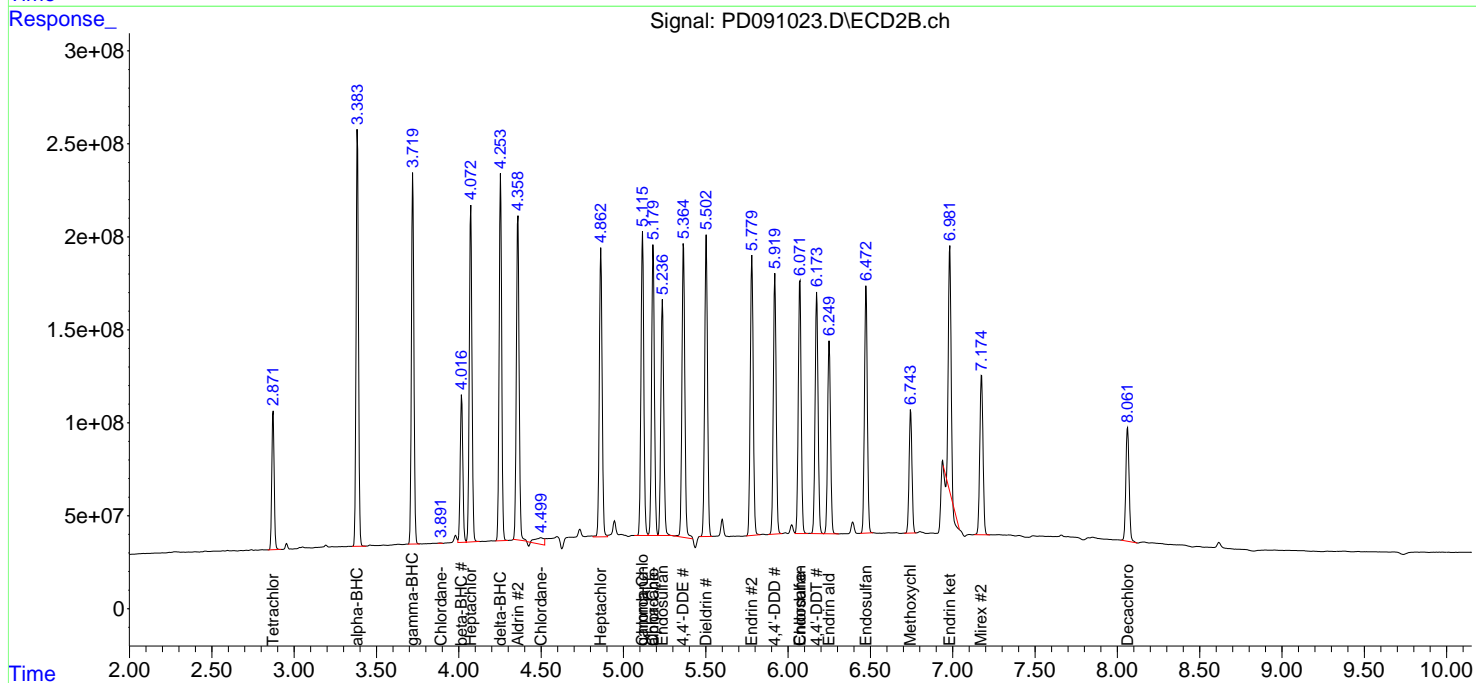
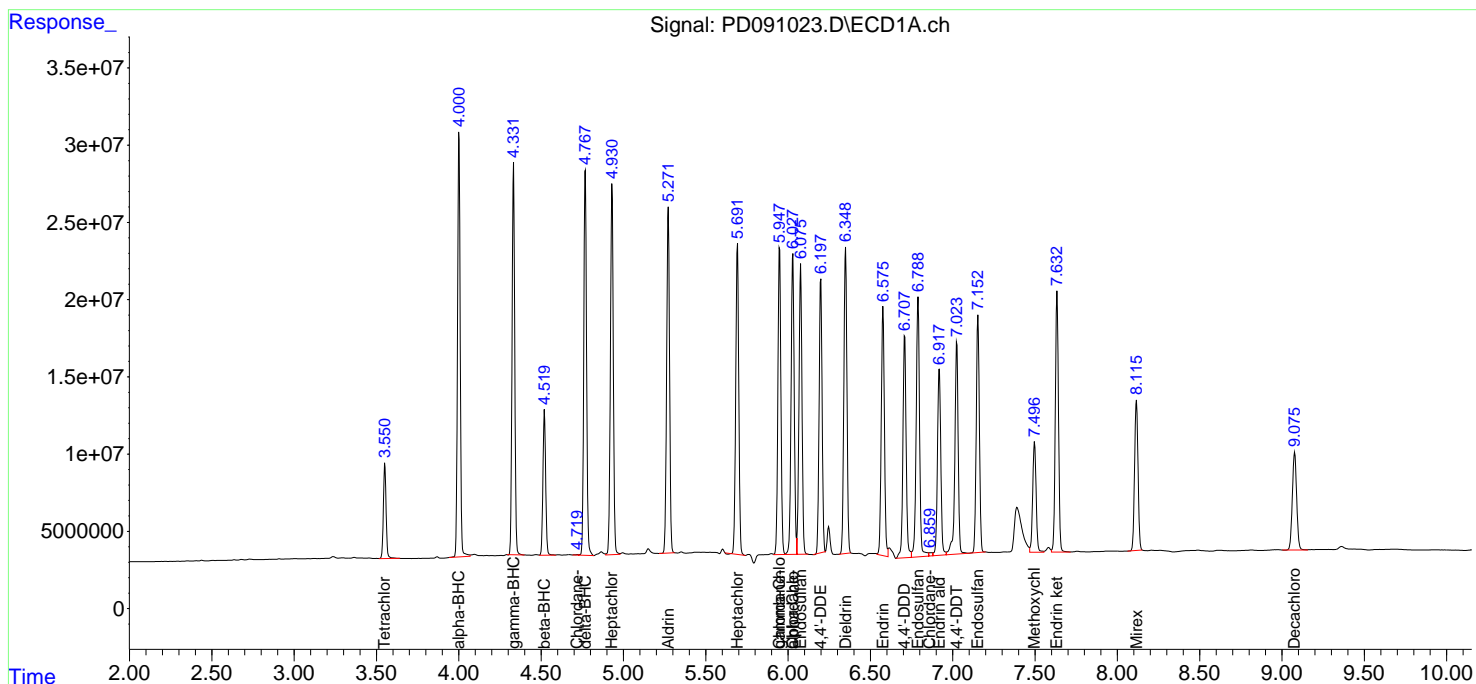
(f)=RT Delta > 1/2 Window (#)=Amounts differ by > 25% (m)=manual int.

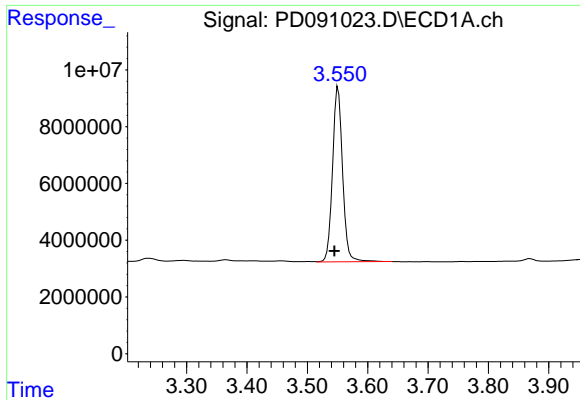
Data Path : Z:\pestpcbsrv\HPCHEM1\ECD\_D\Data\PD110725\  
 Data File : PD091023.D  
 Signal(s) : Signal #1: ECD1A.ch Signal #2: ECD2B.ch  
 Acq On : 07 Nov 2025 12:39  
 Operator : AR\AJ  
 Sample : PB170426BSD  
 Misc :  
 ALS Vial : 10 Sample Multiplier: 1

Instrument :  
 ECD\_D  
 ClientSampleId :

Integration File signal 1: autoint1.e  
 Integration File signal 2: autoint2.e  
 Quant Time: Nov 08 02:44:55 2025  
 Quant Method : Z:\pestpcbsrv\HPCHEM1\ECD\_D\Method\PD101725.M  
 Quant Title : GC Extractables  
 QLast Update : Fri Oct 17 17:43:28 2025  
 Response via : Initial Calibration  
 Integrator: ChemStation

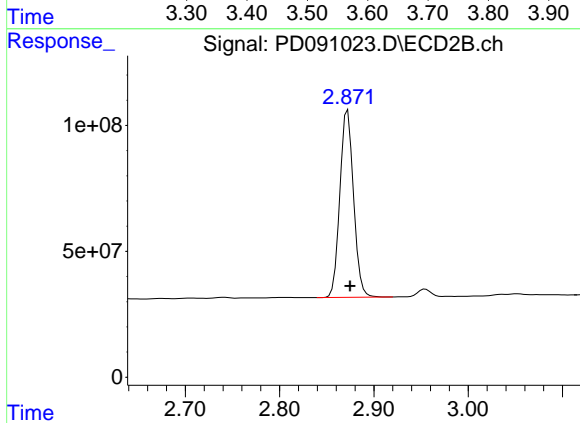
Volume Inj. : 1 µl  
 Signal #1 Phase : ZB-MR1 Signal #2 Phase: ZB-MR2  
 Signal #1 Info : 30M x 0.32mm x0.5 Signal #2 Info : 30M x 0.32mm x 0.25µm



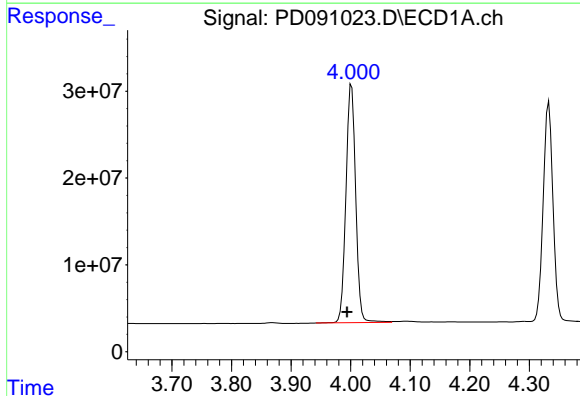


#1 Tetrachloro-m-xylene  
 R.T.: 3.551 min  
 Delta R.T.: 0.006 min  
 Response: 71759700  
 Conc: 23.04 ng/ml

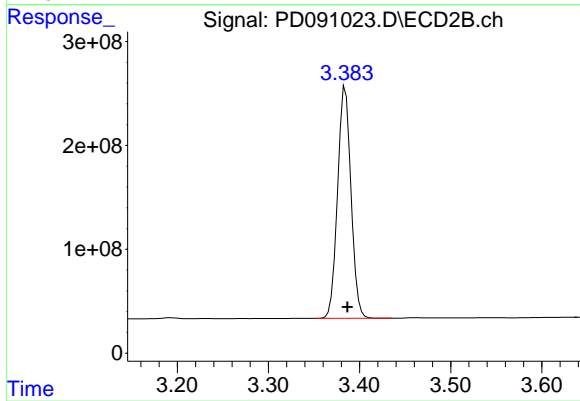
Instrument :  
 ECD\_D  
 ClientSampleId :



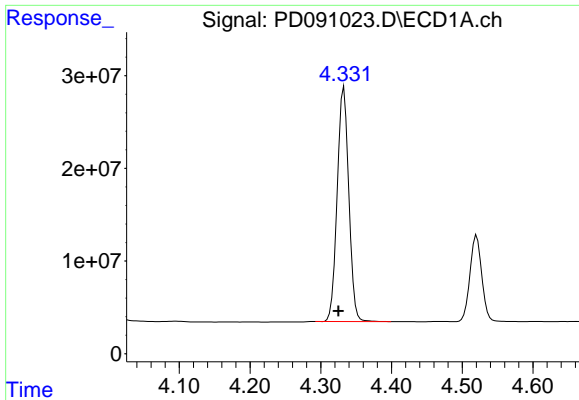
#1 Tetrachloro-m-xylene  
 R.T.: 2.872 min  
 Delta R.T.: -0.002 min  
 Response: 751999750  
 Conc: 25.25 ng/ml



#2 alpha-BHC  
 R.T.: 4.002 min  
 Delta R.T.: 0.007 min  
 Response: 311235687  
 Conc: 43.36 ng/ml

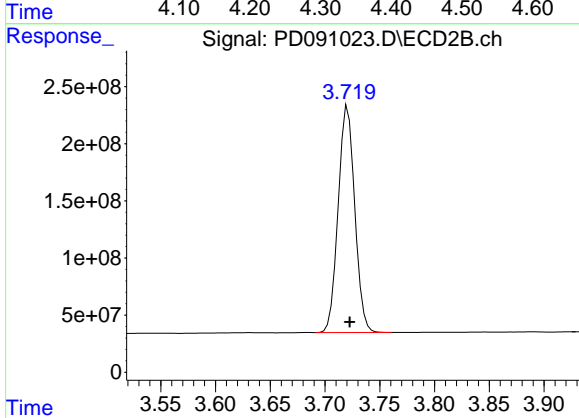


#2 alpha-BHC  
 R.T.: 3.385 min  
 Delta R.T.: -0.002 min  
 Response: 2280136275  
 Conc: 44.62 ng/ml

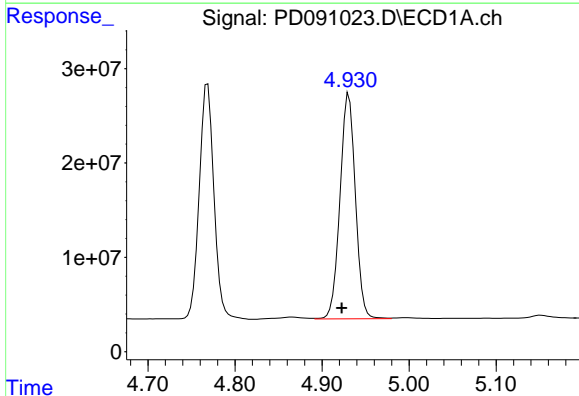


#3 gamma-BHC (Lindane)  
 R.T.: 4.333 min  
 Delta R.T.: 0.008 min  
 Response: 287359896  
 Conc: 42.27 ng/ml

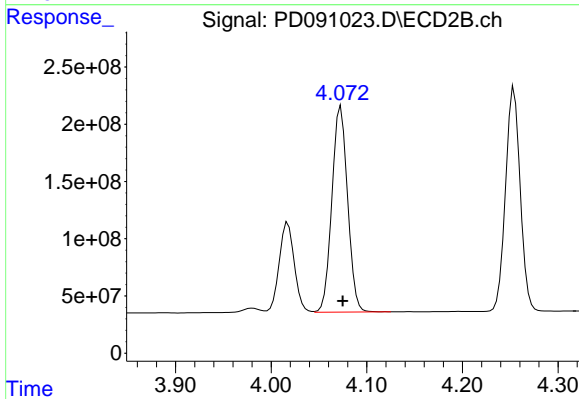
Instrument :  
 ECD\_D  
 ClientSampleId :



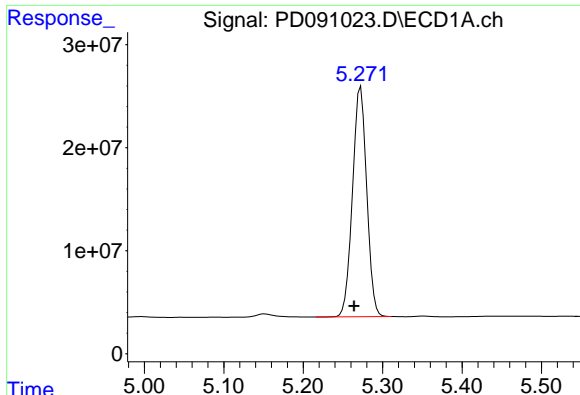
#3 gamma-BHC (Lindane)  
 R.T.: 3.721 min  
 Delta R.T.: -0.002 min  
 Response: 2087629712  
 Conc: 44.18 ng/ml



#4 Heptachlor  
 R.T.: 4.931 min  
 Delta R.T.: 0.008 min  
 Response: 293115253  
 Conc: 52.44 ng/ml

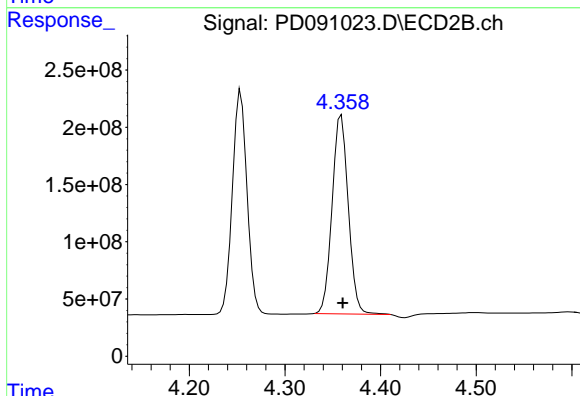


#4 Heptachlor  
 R.T.: 4.073 min  
 Delta R.T.: -0.002 min  
 Response: 2048279413  
 Conc: 45.92 ng/ml

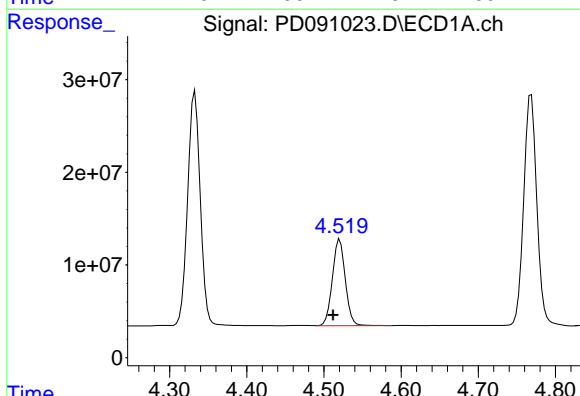


#5 Aldrin  
 R.T.: 5.272 min  
 Delta R.T.: 0.008 min  
 Response: 277531008  
 Conc: 42.39 ng/ml

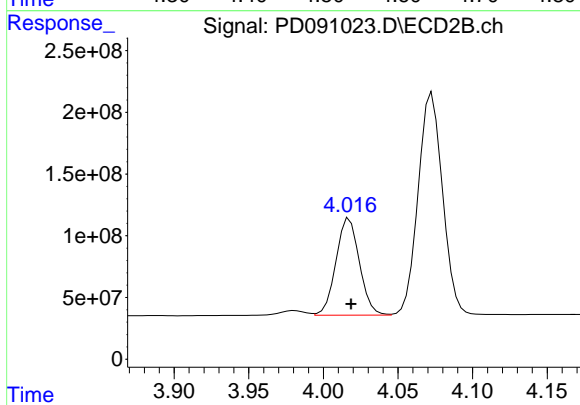
Instrument :  
 ECD\_D  
 ClientSampleId :



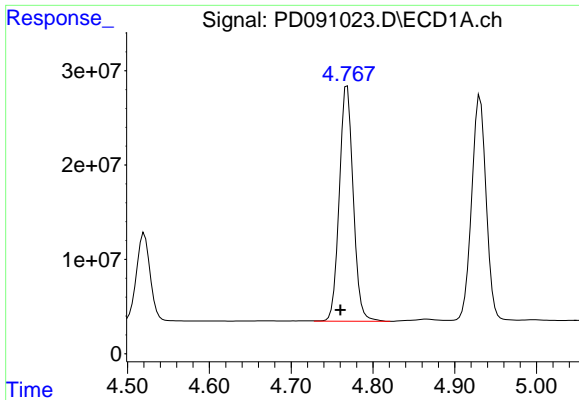
#5 Aldrin  
 R.T.: 4.359 min  
 Delta R.T.: -0.002 min  
 Response: 2039370554  
 Conc: 44.03 ng/ml



#6 beta-BHC  
 R.T.: 4.521 min  
 Delta R.T.: 0.009 min  
 Response: 108917533  
 Conc: 41.58 ng/ml



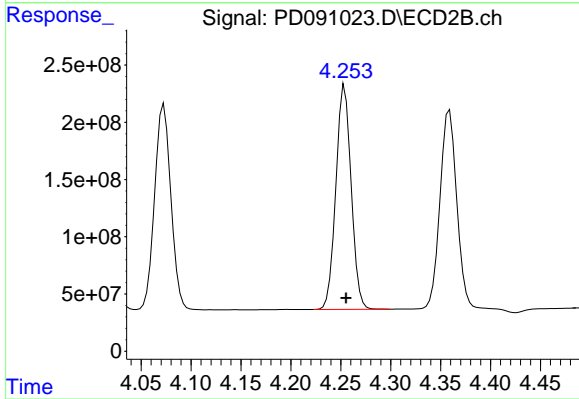
#6 beta-BHC  
 R.T.: 4.017 min  
 Delta R.T.: -0.001 min  
 Response: 860907270  
 Conc: 43.42 ng/ml



#7 delta-BHC

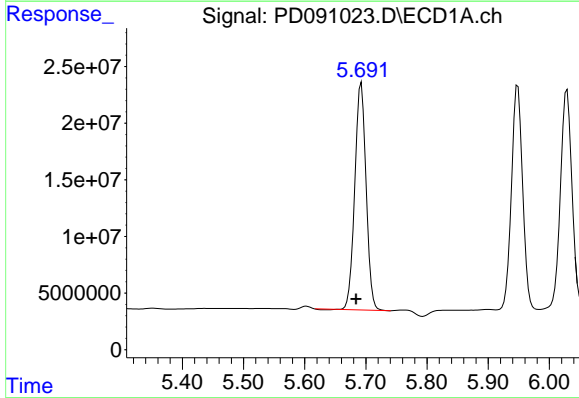
R.T.: 4.769 min  
 Delta R.T.: 0.008 min  
 Response: 293660852  
 Conc: 43.43 ng/ml

Instrument :  
 ECD\_D  
 ClientSampleId :



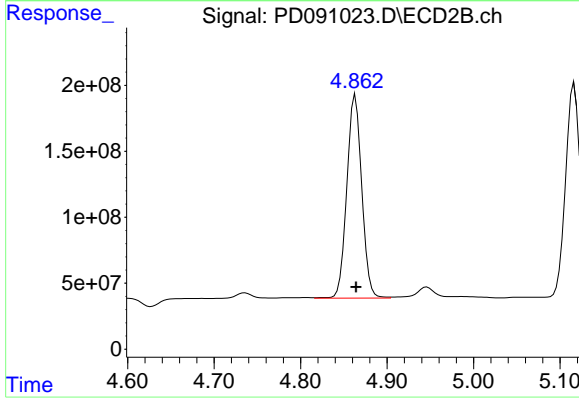
#7 delta-BHC

R.T.: 4.254 min  
 Delta R.T.: -0.001 min  
 Response: 2086516301  
 Conc: 43.73 ng/ml



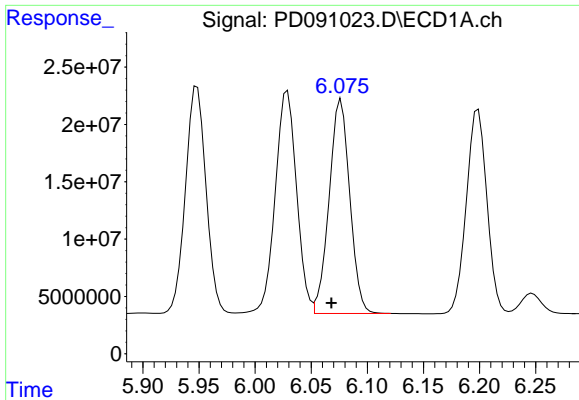
#8 Heptachlor epoxide

R.T.: 5.692 min  
 Delta R.T.: 0.008 min  
 Response: 257985590  
 Conc: 44.56 ng/ml



#8 Heptachlor epoxide

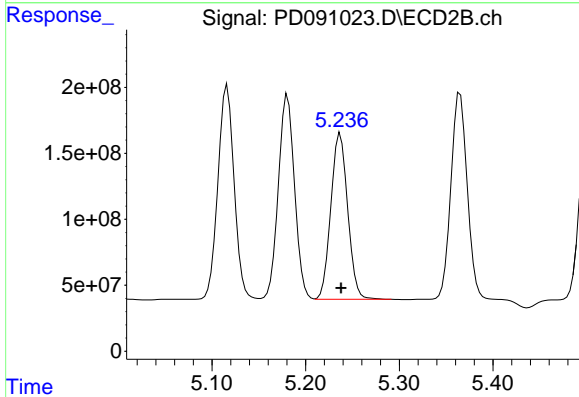
R.T.: 4.863 min  
 Delta R.T.: 0.000 min  
 Response: 1841578827  
 Conc: 43.19 ng/ml



#9 Endosulfan I

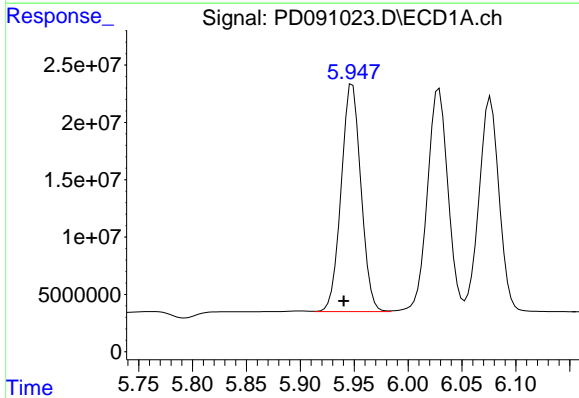
R.T.: 6.077 min  
 Delta R.T.: 0.009 min  
 Response: 239528322  
 Conc: 43.26 ng/ml

Instrument :  
 ECD\_D  
 ClientSampleId :



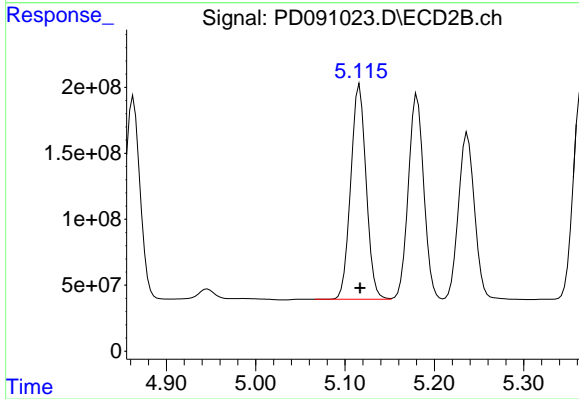
#9 Endosulfan I

R.T.: 5.237 min  
 Delta R.T.: -0.001 min  
 Response: 1576054409  
 Conc: 40.01 ng/ml



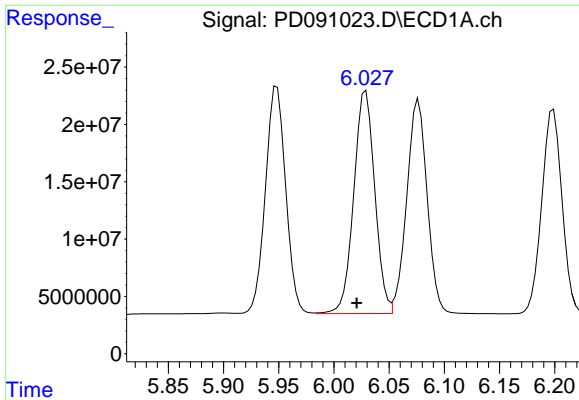
#10 gamma-Chlordane

R.T.: 5.948 min  
 Delta R.T.: 0.008 min  
 Response: 253591431  
 Conc: 42.76 ng/ml



#10 gamma-Chlordane

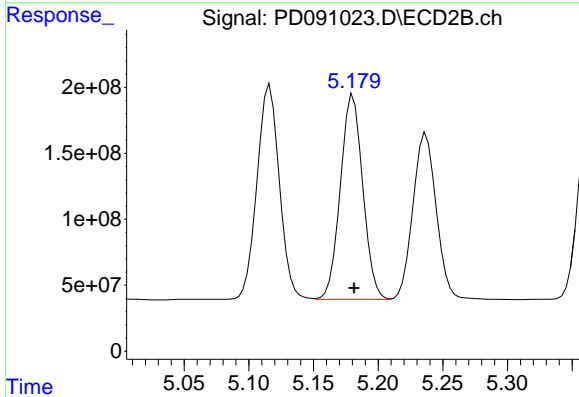
R.T.: 5.116 min  
 Delta R.T.: 0.000 min  
 Response: 1951301784  
 Conc: 43.41 ng/ml



#11 alpha-Chlordane

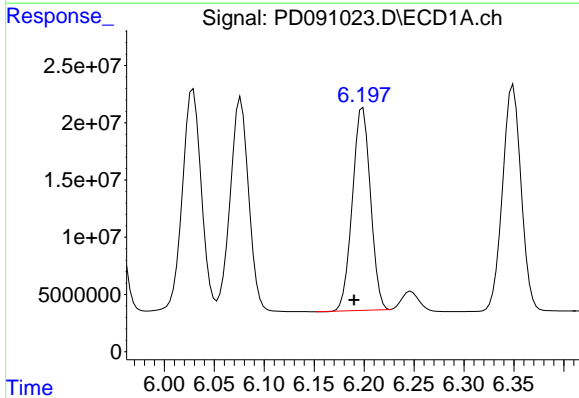
R.T.: 6.029 min  
 Delta R.T.: 0.008 min  
 Response: 257432217  
 Conc: 41.65 ng/ml

Instrument :  
 ECD\_D  
 ClientSampleId :



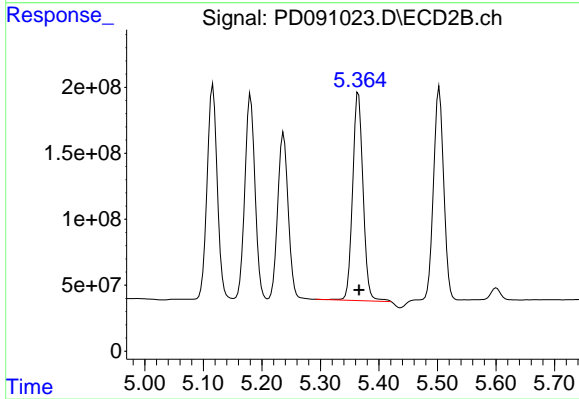
#11 alpha-Chlordane

R.T.: 5.181 min  
 Delta R.T.: 0.000 min  
 Response: 1867526901  
 Conc: 43.29 ng/ml



#12 4,4'-DDE

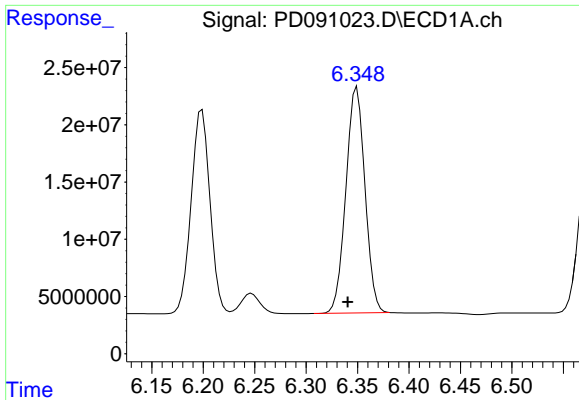
R.T.: 6.199 min  
 Delta R.T.: 0.009 min  
 Response: 223172476  
 Conc: 41.90 ng/ml



#12 4,4'-DDE

R.T.: 5.365 min  
 Delta R.T.: 0.000 min  
 Response: 1956349822  
 Conc: 44.63 ng/ml

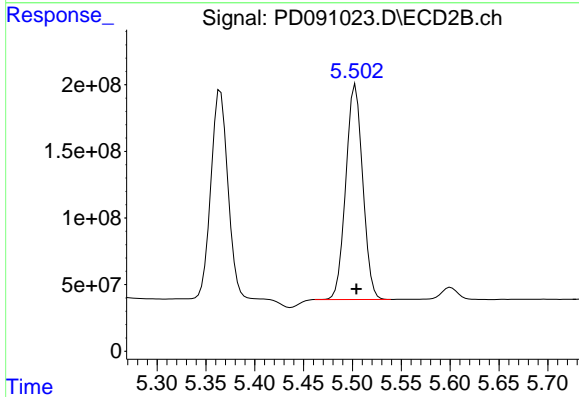




#13 Dieldrin

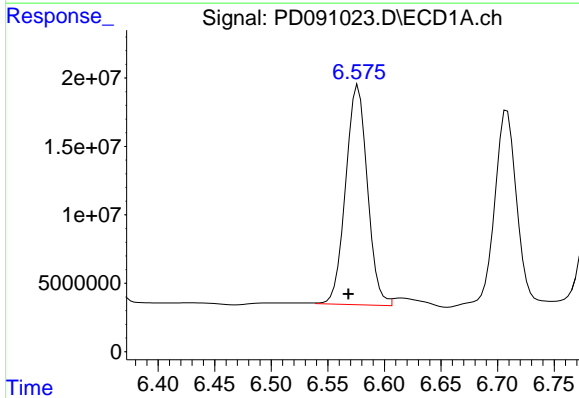
R.T.: 6.349 min  
 Delta R.T.: 0.009 min  
 Response: 254888326  
 Conc: 43.71 ng/ml

Instrument :  
 ECD\_D  
 ClientSampleId :



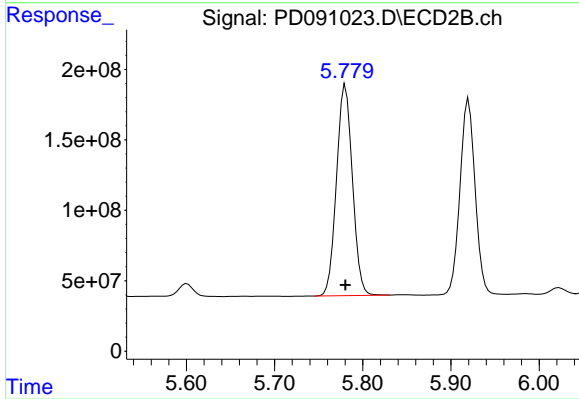
#13 Dieldrin

R.T.: 5.503 min  
 Delta R.T.: 0.000 min  
 Response: 1948302084  
 Conc: 44.10 ng/ml



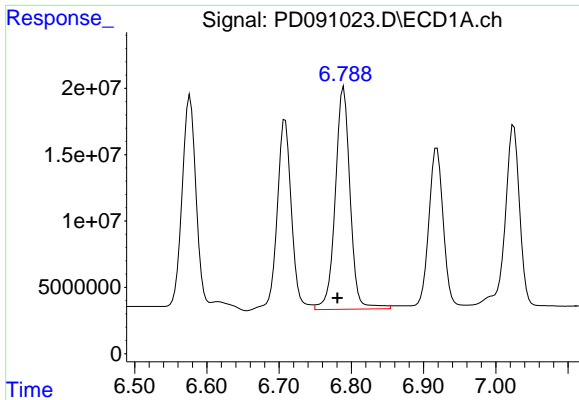
#14 Endrin

R.T.: 6.577 min  
 Delta R.T.: 0.009 min  
 Response: 214732003  
 Conc: 43.35 ng/ml



#14 Endrin

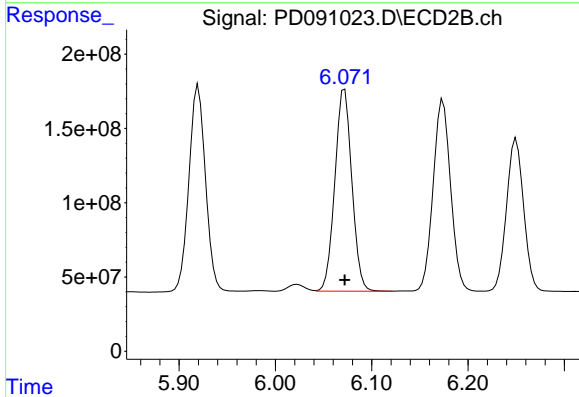
R.T.: 5.780 min  
 Delta R.T.: 0.000 min  
 Response: 1878756289  
 Conc: 46.40 ng/ml



#15 Endosulfan II

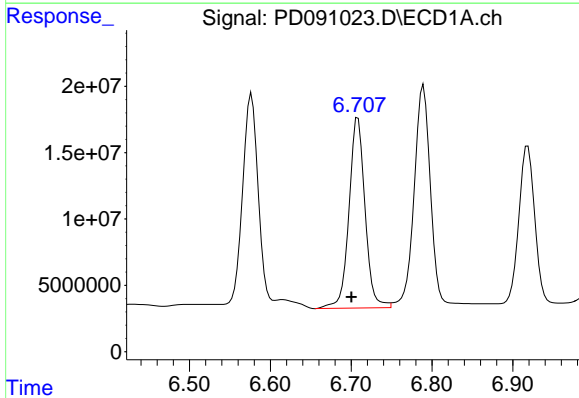
R.T.: 6.789 min  
 Delta R.T.: 0.009 min  
 Response: 239388700  
 Conc: 47.88 ng/ml

Instrument :  
 ECD\_D  
 ClientSampleId :



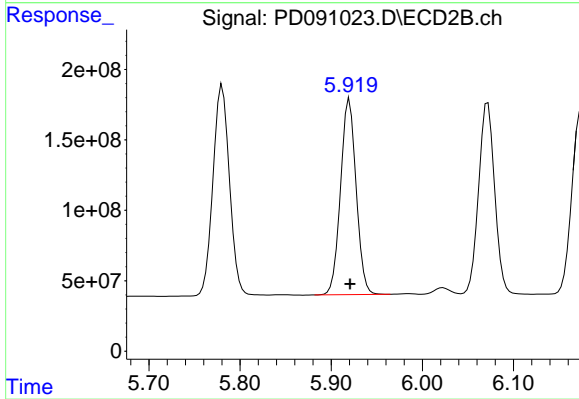
#15 Endosulfan II

R.T.: 6.072 min  
 Delta R.T.: 0.000 min  
 Response: 1668820055  
 Conc: 44.44 ng/ml



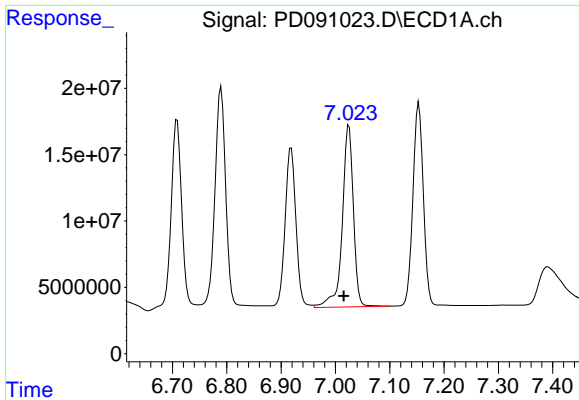
#16 4,4'-DDD

R.T.: 6.708 min  
 Delta R.T.: 0.008 min  
 Response: 198569733  
 Conc: 48.98 ng/ml



#16 4,4'-DDD

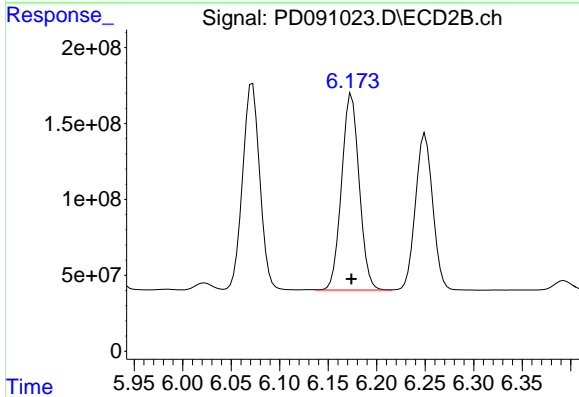
R.T.: 5.920 min  
 Delta R.T.: 0.000 min  
 Response: 1652893799  
 Conc: 45.36 ng/ml



#17 4,4'-DDT

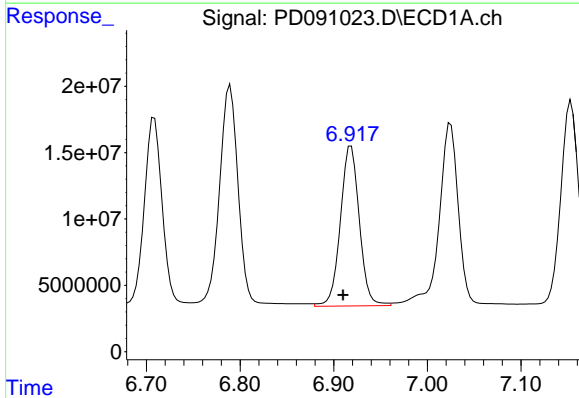
R.T.: 7.025 min  
 Delta R.T.: 0.010 min  
 Response: 195196590  
 Conc: 47.49 ng/ml

Instrument :  
 ECD\_D  
 ClientSampleId :



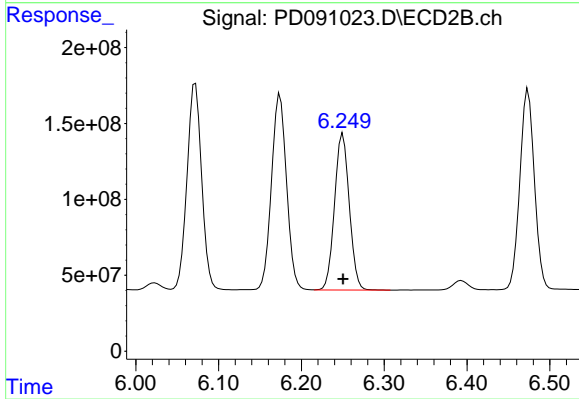
#17 4,4'-DDT

R.T.: 6.174 min  
 Delta R.T.: 0.000 min  
 Response: 1632637159  
 Conc: 46.55 ng/ml



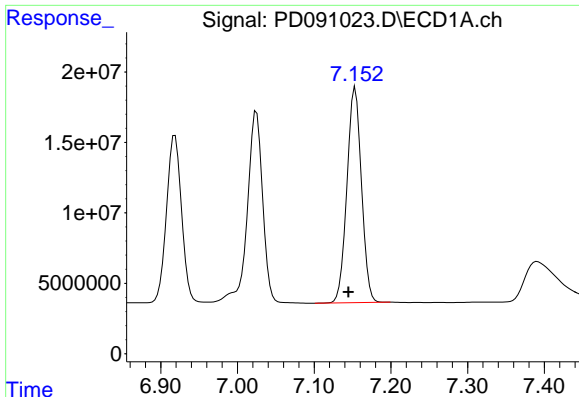
#18 Endrin aldehyde

R.T.: 6.919 min  
 Delta R.T.: 0.009 min  
 Response: 169963801  
 Conc: 46.40 ng/ml



#18 Endrin aldehyde

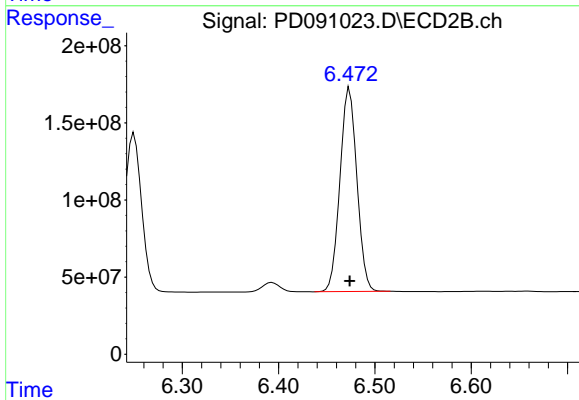
R.T.: 6.250 min  
 Delta R.T.: 0.000 min  
 Response: 1276391461  
 Conc: 46.09 ng/ml



#19 Endosulfan Sulfate

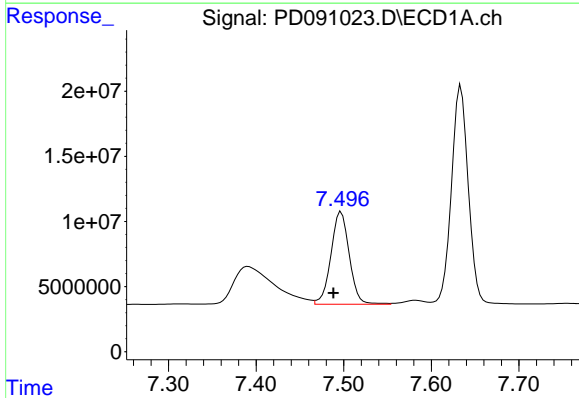
R.T.: 7.153 min  
Delta R.T.: 0.009 min  
Response: 202617678  
Conc: 43.68 ng/ml

Instrument :  
ECD\_D  
ClientSampleId :



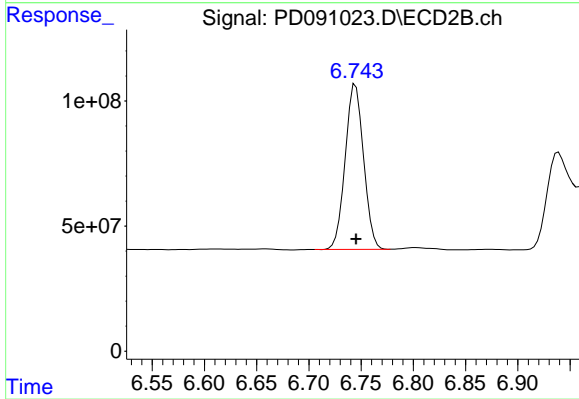
#19 Endosulfan Sulfate

R.T.: 6.474 min  
Delta R.T.: 0.000 min  
Response: 1610341589  
Conc: 44.93 ng/ml



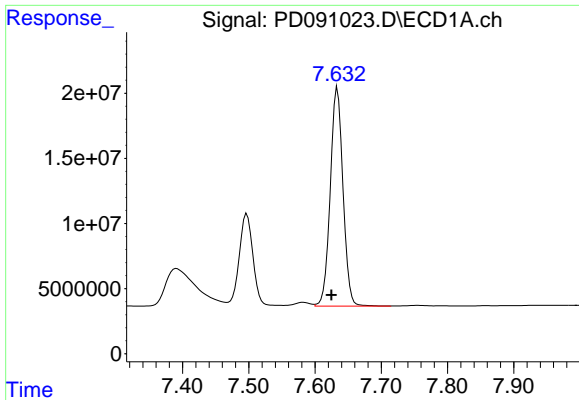
#20 Methoxychlor

R.T.: 7.497 min  
Delta R.T.: 0.009 min  
Response: 103328749  
Conc: 48.61 ng/ml



#20 Methoxychlor

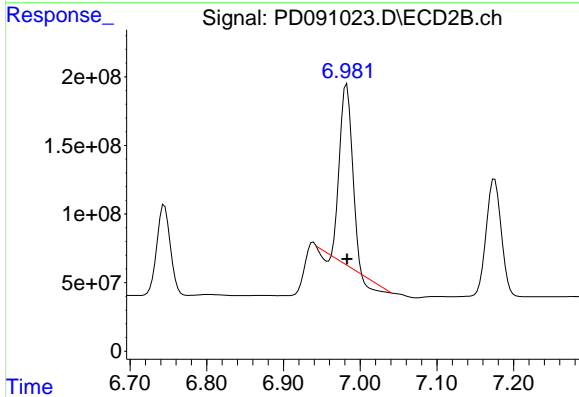
R.T.: 6.745 min  
Delta R.T.: 0.000 min  
Response: 806943366  
Conc: 46.30 ng/ml



#21 Endrin ketone

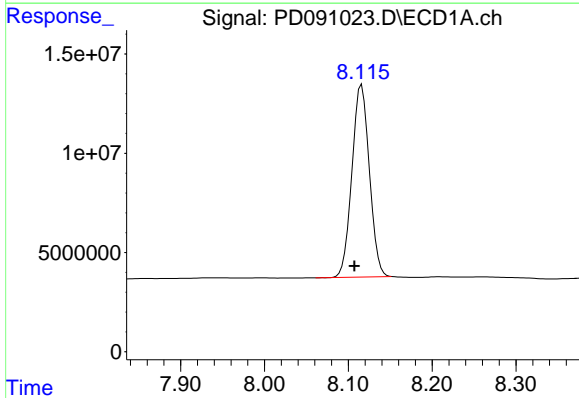
R.T.: 7.634 min  
 Delta R.T.: 0.009 min  
 Response: 224177847  
 Conc: 46.14 ng/ml

Instrument :  
 ECD\_D  
 ClientSampleId :



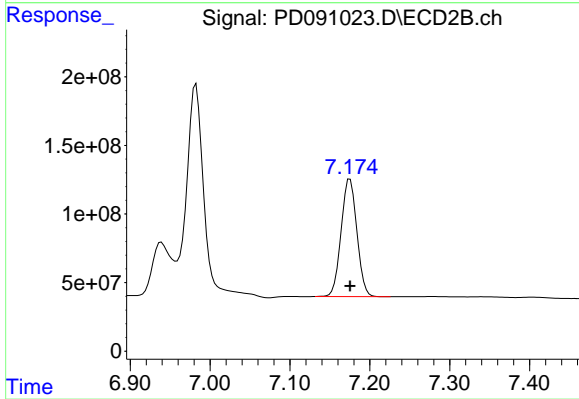
#21 Endrin ketone

R.T.: 6.982 min  
 Delta R.T.: 0.000 min  
 Response: 1375100336  
 Conc: 36.46 ng/ml



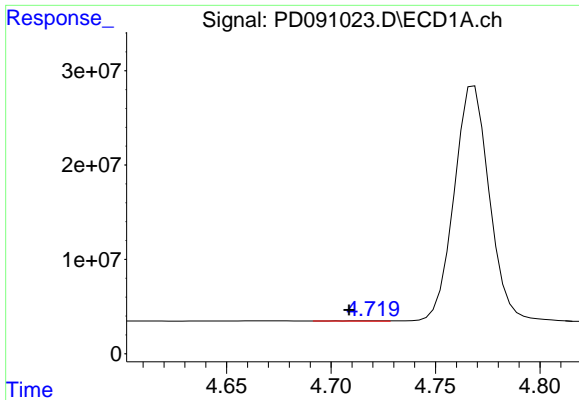
#22 Mirex

R.T.: 8.116 min  
 Delta R.T.: 0.009 min  
 Response: 140436326  
 Conc: 43.87 ng/ml



#22 Mirex

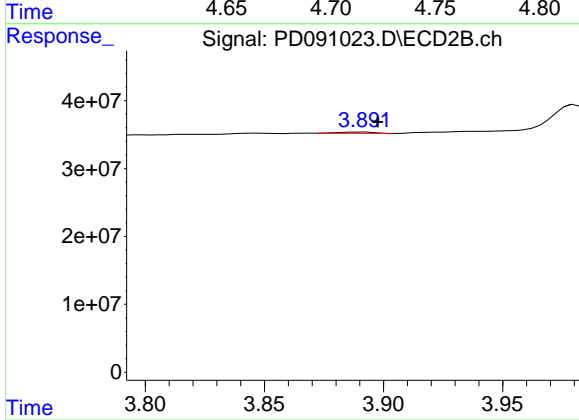
R.T.: 7.175 min  
 Delta R.T.: 0.000 min  
 Response: 1176410296  
 Conc: 45.79 ng/ml



#23 Chlordane-1

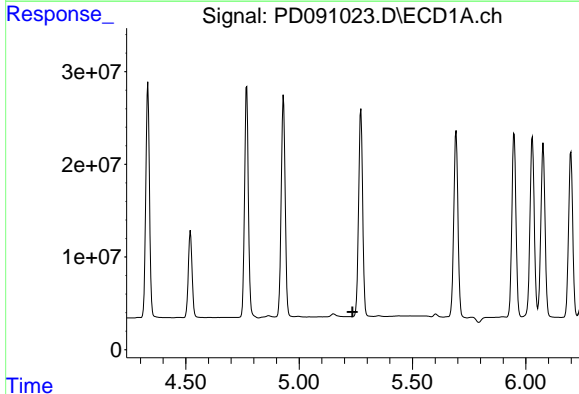
R.T.: 4.720 min  
 Delta R.T.: 0.012 min  
 Response: 331797  
 Conc: 1.76 ng/ml

Instrument :  
 ECD\_D  
 ClientSampleId :



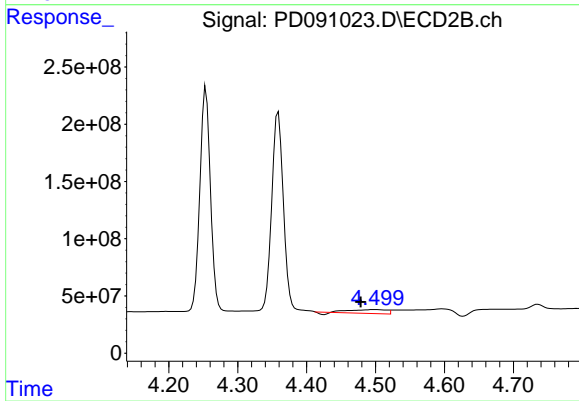
#23 Chlordane-1

R.T.: 3.891 min  
 Delta R.T.: -0.006 min  
 Response: 1891937  
 Conc: 1.52 ng/ml



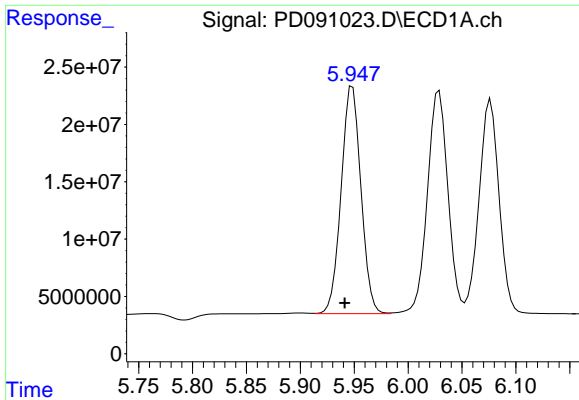
#24 Chlordane-2

R.T.: 0.000 min  
 Exp R.T. : 5.236 min  
 Response: 0  
 Conc: N.D.



#24 Chlordane-2

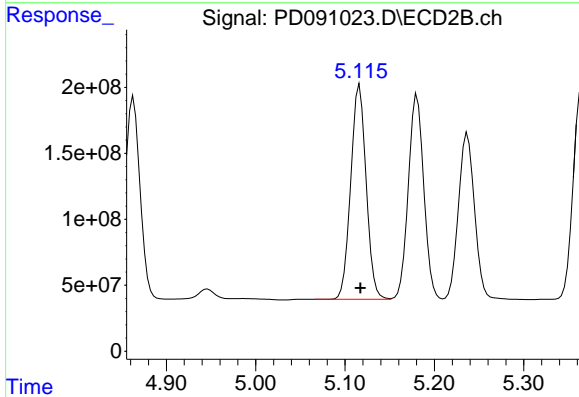
R.T.: 4.499 min  
 Delta R.T.: 0.020 min  
 Response: 116050529  
 Conc: 88.96 ng/ml



#25 Chlordane-3

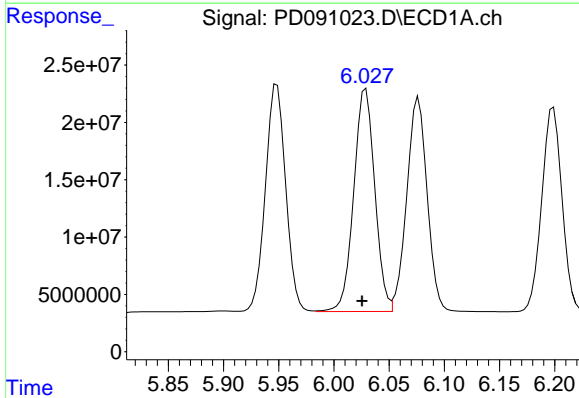
R.T.: 5.948 min  
 Delta R.T.: 0.007 min  
 Response: 253591431  
 Conc: 332.47 ng/ml

Instrument :  
 ECD\_D  
 ClientSampleId :



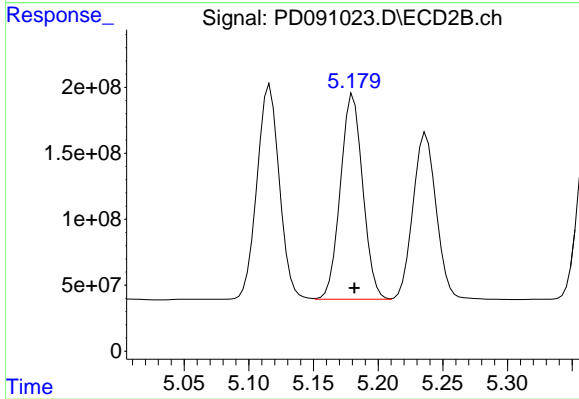
#25 Chlordane-3

R.T.: 5.116 min  
 Delta R.T.: 0.000 min  
 Response: 1951301784  
 Conc: 501.42 ng/ml



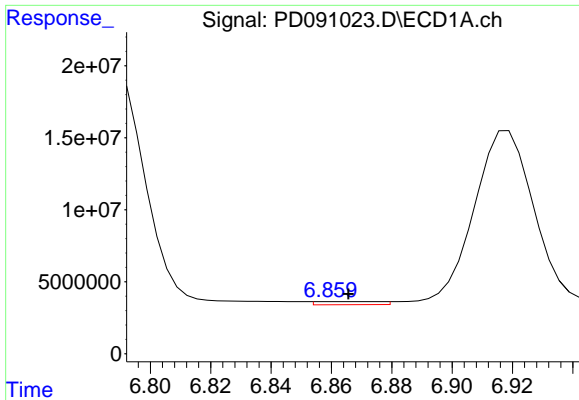
#26 Chlordane-4

R.T.: 6.029 min  
 Delta R.T.: 0.003 min  
 Response: 257432217  
 Conc: 265.70 ng/ml



#26 Chlordane-4

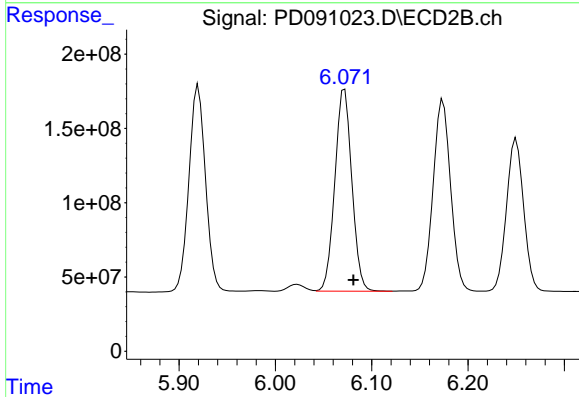
R.T.: 5.181 min  
 Delta R.T.: -0.001 min  
 Response: 1867526901  
 Conc: 558.93 ng/ml



#27 Chlordane-5

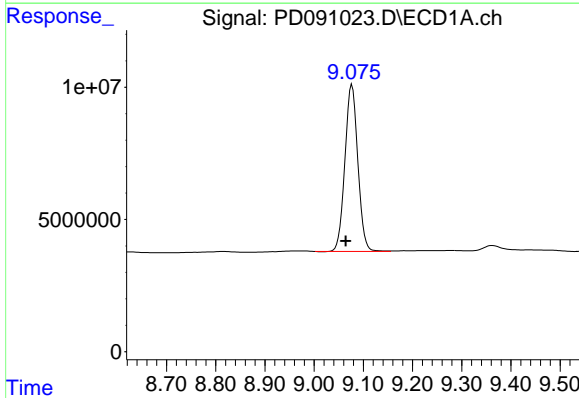
R.T.: 6.861 min  
 Delta R.T.: -0.004 min  
 Response: 3196873  
 Conc: 21.28 ng/ml

Instrument :  
 ECD\_D  
 ClientSampleId :



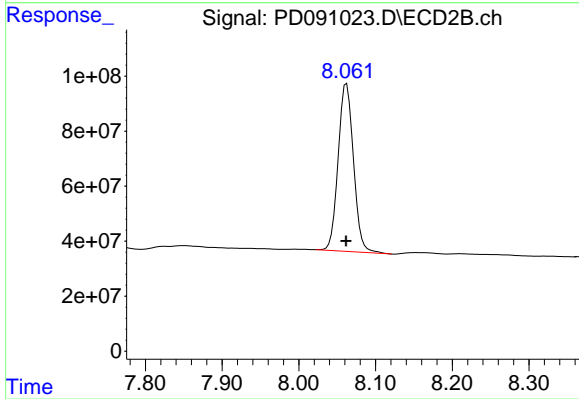
#27 Chlordane-5

R.T.: 6.072 min  
 Delta R.T.: -0.009 min  
 Response: 1668820055  
 Conc: 1130.61 ng/ml



#28 Decachlorobiphenyl

R.T.: 9.077 min  
 Delta R.T.: 0.013 min  
 Response: 115286104  
 Conc: 24.64 ng/ml



#28 Decachlorobiphenyl

R.T.: 8.062 min  
 Delta R.T.: 0.000 min  
 Response: 848516080  
 Conc: 28.01 ng/ml