

Data Path : Z:\pestpcbsrv\HPCHEM1\ECD\_D\Data\PD110725\  
 Data File : PD091026.D  
 Signal(s) : Signal #1: ECD1A.ch Signal #2: ECD2B.ch  
 Acq On : 07 Nov 2025 13:32  
 Operator : AR\AJ  
 Sample : PSTDCCC050  
 Misc :  
 ALS Vial : 4 Sample Multiplier: 1

Instrument :  
 ECD\_D  
 ClientSampleId :

Integration File signal 1: autoint1.e  
 Integration File signal 2: autoint2.e  
 Quant Time: Nov 08 02:47:10 2025  
 Quant Method : Z:\pestpcbsrv\HPCHEM1\ECD\_D\Method\PD101725.M  
 Quant Title : GC Extractables  
 QLast Update : Fri Oct 17 17:43:28 2025  
 Response via : Initial Calibration  
 Integrator: ChemStation

Volume Inj. : 1 µl  
 Signal #1 Phase : ZB-MR2 Signal #2 Phase: ZB-MR2  
 Signal #1 Info : 30M x 0.32mm x0.5 Signal #2 Info : 30M x 0.32mm x 0.25µm

	Compound	RT#1	RT#2	Resp#1	Resp#2	ng/ml	ng/ml
-----							
System Monitoring Compounds							
1)	SA Tetrachlo...	3.544	2.874	148.8E6	1522.0E6	47.766	51.114
28)	SA Decachlor...	9.065	8.059	214.1E6	1662.0E6	45.766	54.866
Target Compounds							
2)	A alpha-BHC	3.994	3.385	355.7E6	2641.6E6	49.562	51.699
3)	MA gamma-BHC...	4.324	3.721	332.6E6	2427.6E6	48.924	51.379
4)	MA Heptachlor	4.922	4.073	327.4E6	2377.8E6	58.576	53.311
5)	MB Aldrin	5.263	4.359	318.3E6	2396.6E6	48.618	51.742
6)	B beta-BHC	4.512	4.018	126.1E6	987.5E6	48.132	49.801
7)	B delta-BHC	4.760	4.254	332.8E6	2458.1E6	49.211	51.514
8)	B Heptachlo...	5.684	4.862	299.4E6	2108.0E6	51.715	49.439
9)	A Endosulfan I	6.068	5.236	267.0E6	1626.6E6	48.232	41.294
10)	B gamma-Chl...	5.939	5.115	283.9E6	2277.3E6	47.872	50.665
11)	B alpha-Chl...	6.020	5.180	286.8E6	2170.8E6	46.399	50.323
12)	B 4,4'-DDE	6.190	5.364	248.7E6	2372.2E6	46.697	54.114
13)	MA Dieldrin	6.340	5.502	285.9E6	2276.9E6	49.037	51.532
14)	MA Endrin	6.568	5.779	246.4E6	2150.8E6	49.733	53.114
15)	B Endosulfa...	6.781	6.070	258.5E6	1952.2E6	51.705	51.981
16)	A 4,4'-DDD	6.700	5.918	222.3E6	1922.6E6	54.823	52.762
17)	MA 4,4'-DDT	7.015	6.172	213.7E6	1881.5E6	51.995	53.644
18)	B Endrin al...	6.910	6.248	188.5E6	1458.5E6	51.478	52.666
19)	B Endosulfa...	7.144	6.471	223.2E6	1864.5E6	48.112	52.016
20)	A Methoxychlor	7.489	6.742	112.1E6	942.3E6	52.741	54.068
21)	B Endrin ke...	7.626	6.980	243.7E6	1719.7E6	50.161	45.593
22)	Mirex	8.108	7.173	154.8E6	1395.5E6	48.349	54.320
23)	Chlordane-1	0.000	3.889	0	1068889	N.D.	0.858 #
24)	Chlordane-2	5.263f	4.497	318.3E6	208.1E6	1648.179	159.501 #
25)	Chlordane-3	5.939	5.115	283.9E6	2277.3E6	372.247	585.199 #
26)	Chlordane-4	6.020	5.180	286.8E6	2170.8E6	295.969	649.711 #
27)	Chlordane-5	6.863	6.070	2117673	1952.2E6	14.094	1322.577 #

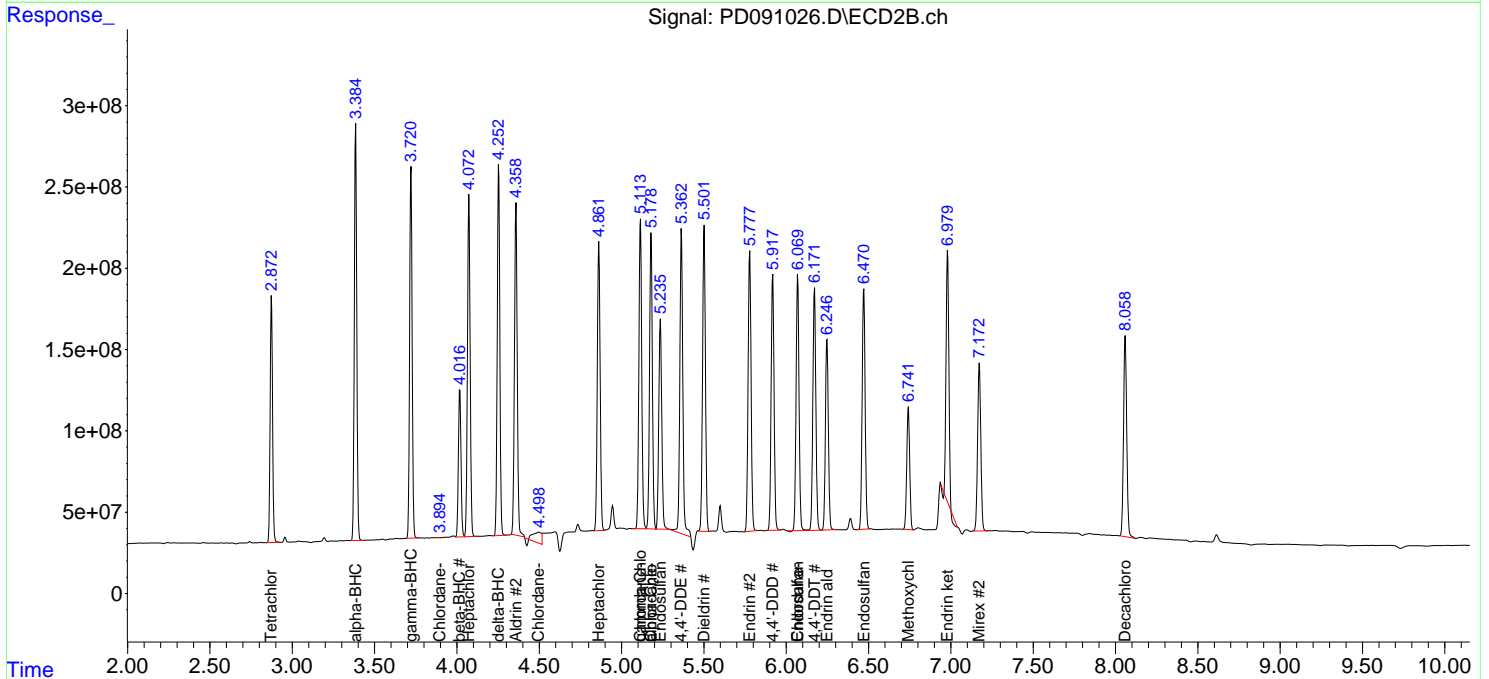
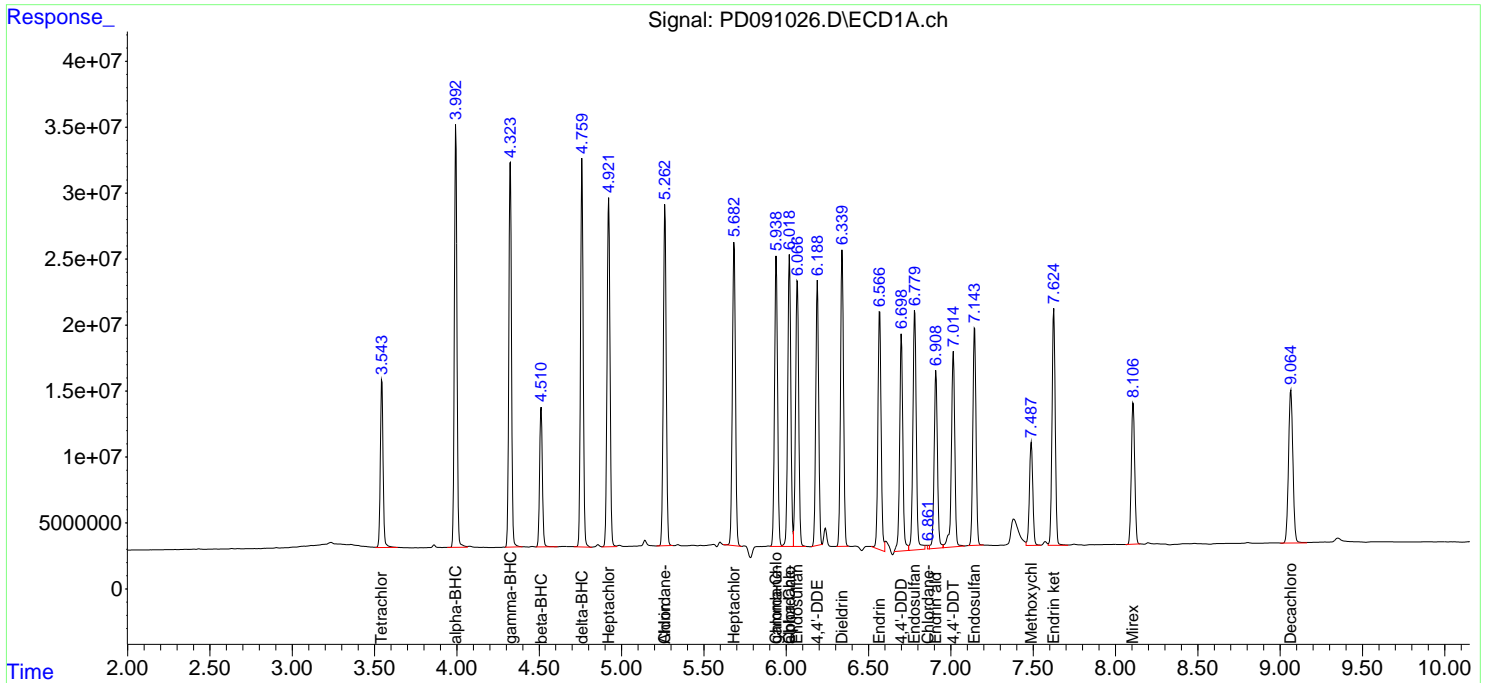
(f)=RT Delta > 1/2 Window (#)=Amounts differ by > 25% (m)=manual int.

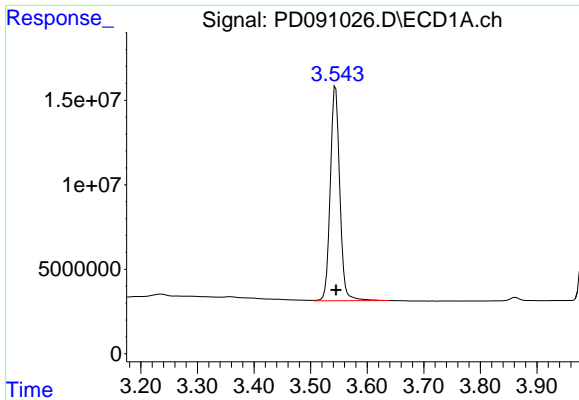
Data Path : Z:\pestpcbsrv\HPCHEM1\ECD\_D\Data\PD110725\  
 Data File : PD091026.D  
 Signal(s) : Signal #1: ECD1A.ch Signal #2: ECD2B.ch  
 Acq On : 07 Nov 2025 13:32  
 Operator : AR\AJ  
 Sample : PSTDCCC050  
 Misc :  
 ALS Vial : 4 Sample Multiplier: 1

Instrument :  
 ECD\_D  
 ClientSampleId :

Integration File signal 1: autoint1.e  
 Integration File signal 2: autoint2.e  
 Quant Time: Nov 08 02:47:10 2025  
 Quant Method : Z:\pestpcbsrv\HPCHEM1\ECD\_D\Method\PD101725.M  
 Quant Title : GC Extractables  
 QLast Update : Fri Oct 17 17:43:28 2025  
 Response via : Initial Calibration  
 Integrator: ChemStation

Volume Inj. : 1 µl  
 Signal #1 Phase : ZB-MR1 Signal #2 Phase: ZB-MR2  
 Signal #1 Info : 30M x 0.32mm x0.5 Signal #2 Info : 30M x 0.32mm x 0.25µm

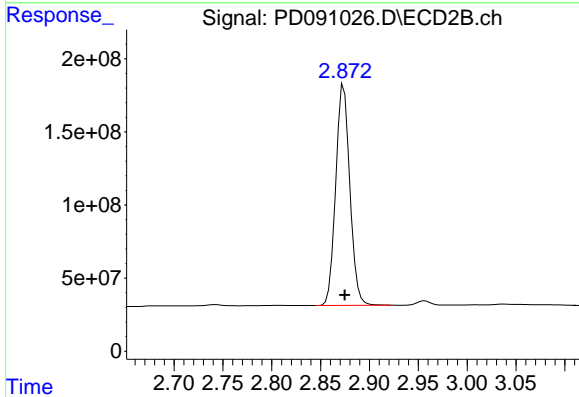




#1 Tetrachloro-m-xylene

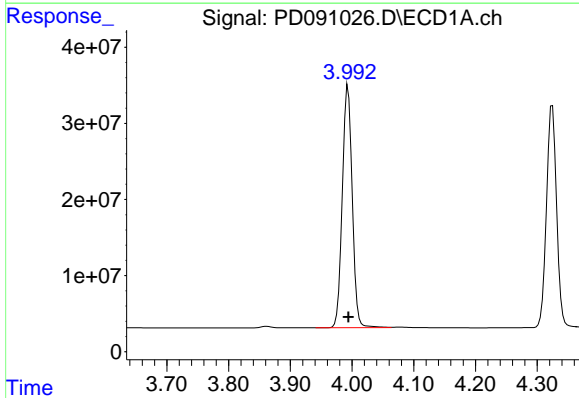
R.T.: 3.544 min  
 Delta R.T.: 0.000 min  
 Response: 148750193  
 Conc: 47.77 ng/ml

Instrument :  
 ECD\_D  
 ClientSampleId :



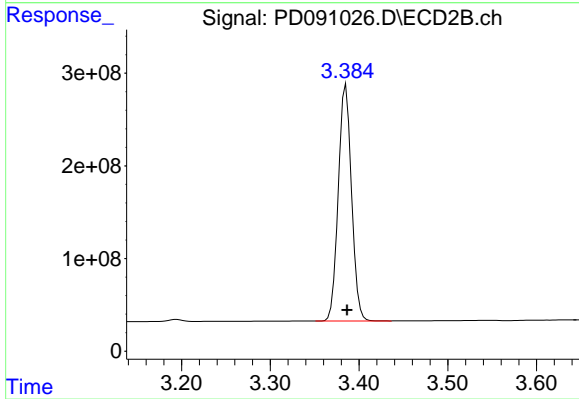
#1 Tetrachloro-m-xylene

R.T.: 2.874 min  
 Delta R.T.: 0.000 min  
 Response: 1522029815  
 Conc: 51.11 ng/ml



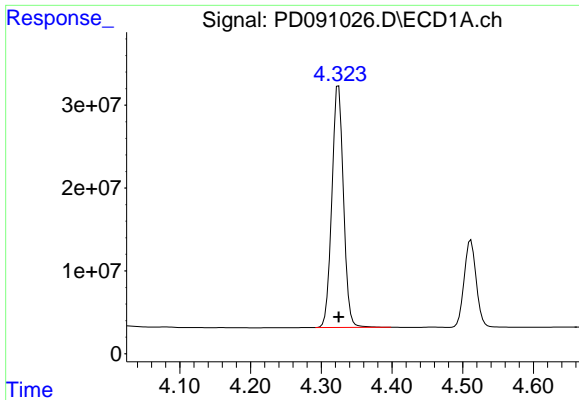
#2 alpha-BHC

R.T.: 3.994 min  
 Delta R.T.: 0.000 min  
 Response: 355715707  
 Conc: 49.56 ng/ml



#2 alpha-BHC

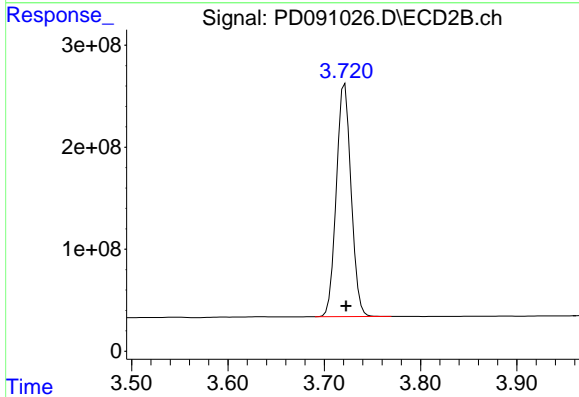
R.T.: 3.385 min  
 Delta R.T.: -0.001 min  
 Response: 2641603333  
 Conc: 51.70 ng/ml



#3 gamma-BHC (Lindane)

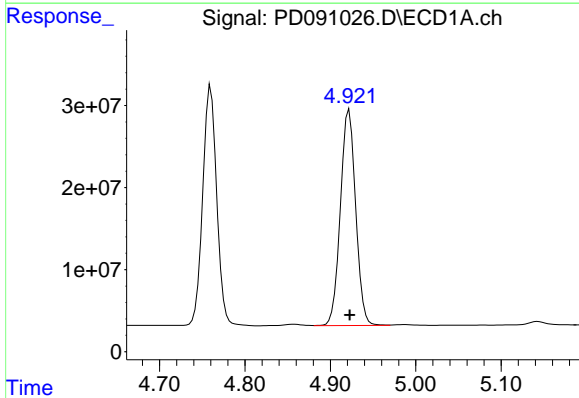
R.T.: 4.324 min  
 Delta R.T.: 0.000 min  
 Response: 332628132  
 Conc: 48.92 ng/ml

Instrument :  
 ECD\_D  
 ClientSampleId :



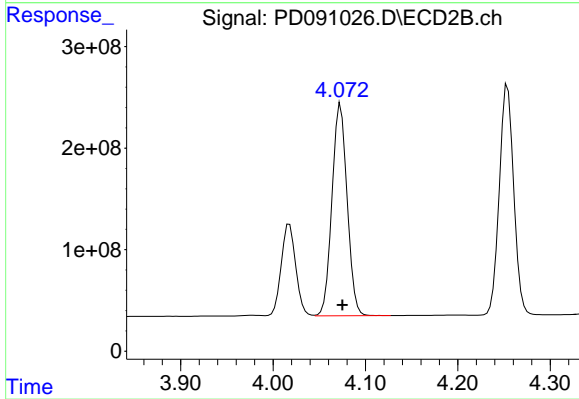
#3 gamma-BHC (Lindane)

R.T.: 3.721 min  
 Delta R.T.: -0.001 min  
 Response: 2427606049  
 Conc: 51.38 ng/ml



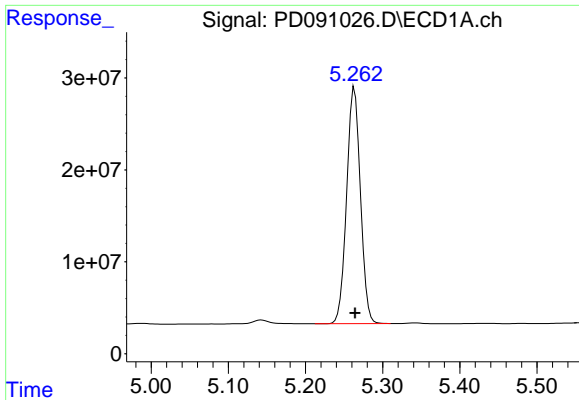
#4 Heptachlor

R.T.: 4.922 min  
 Delta R.T.: 0.000 min  
 Response: 327415860  
 Conc: 58.58 ng/ml



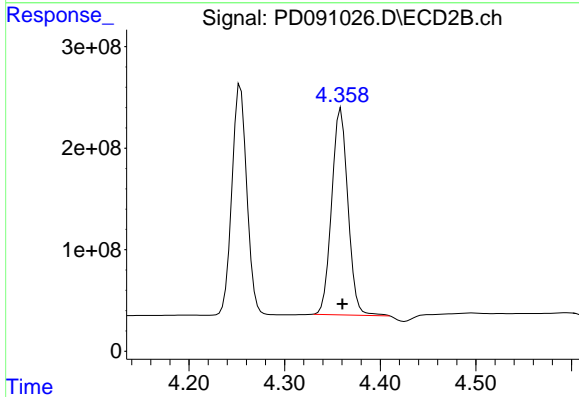
#4 Heptachlor

R.T.: 4.073 min  
 Delta R.T.: -0.002 min  
 Response: 2377804064  
 Conc: 53.31 ng/ml

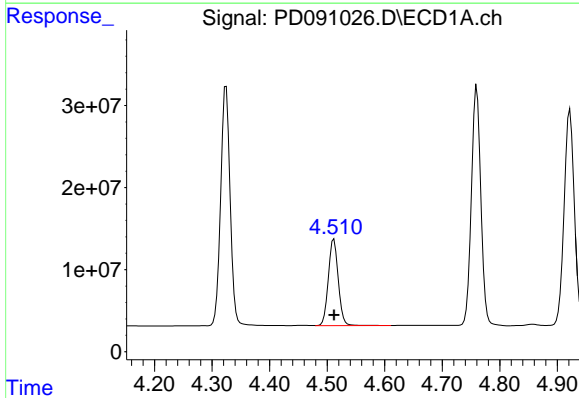


#5 Aldrin  
 R.T.: 5.263 min  
 Delta R.T.: 0.000 min  
 Response: 318312419  
 Conc: 48.62 ng/ml

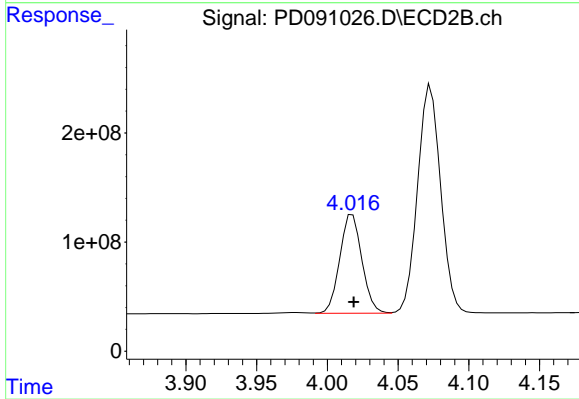
Instrument :  
 ECD\_D  
 ClientSampleId :



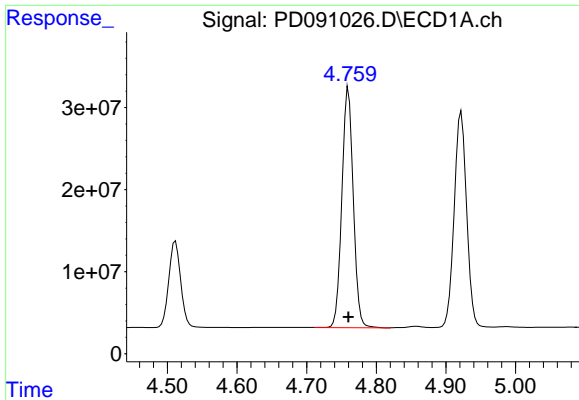
#5 Aldrin  
 R.T.: 4.359 min  
 Delta R.T.: -0.002 min  
 Response: 2396620032  
 Conc: 51.74 ng/ml



#6 beta-BHC  
 R.T.: 4.512 min  
 Delta R.T.: 0.000 min  
 Response: 126087660  
 Conc: 48.13 ng/ml



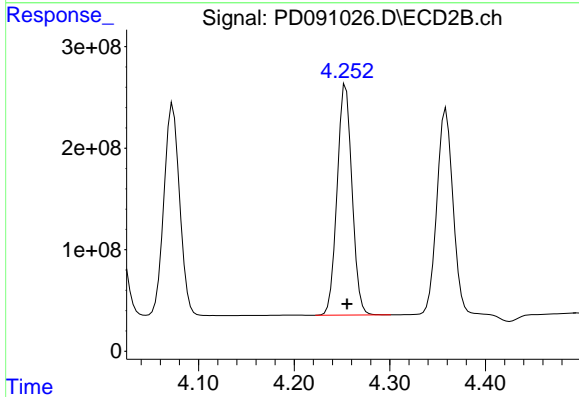
#6 beta-BHC  
 R.T.: 4.018 min  
 Delta R.T.: 0.000 min  
 Response: 987522369  
 Conc: 49.80 ng/ml



#7 delta-BHC

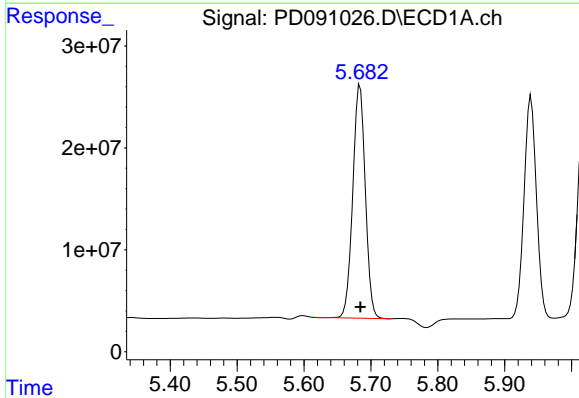
R.T.: 4.760 min  
Delta R.T.: 0.000 min  
Response: 332750522  
Conc: 49.21 ng/ml

Instrument :  
ECD\_D  
ClientSampleId :



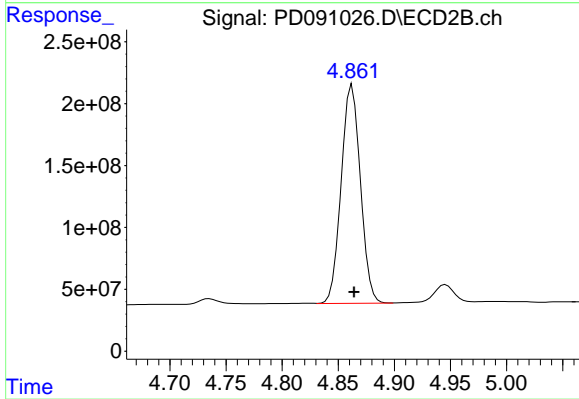
#7 delta-BHC

R.T.: 4.254 min  
Delta R.T.: -0.001 min  
Response: 2458076922  
Conc: 51.51 ng/ml



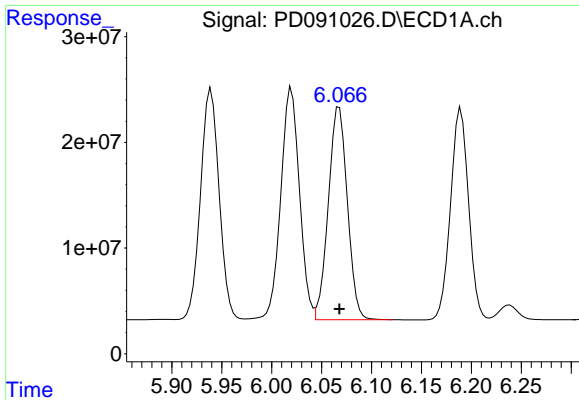
#8 Heptachlor epoxide

R.T.: 5.684 min  
Delta R.T.: 0.000 min  
Response: 299378909  
Conc: 51.71 ng/ml



#8 Heptachlor epoxide

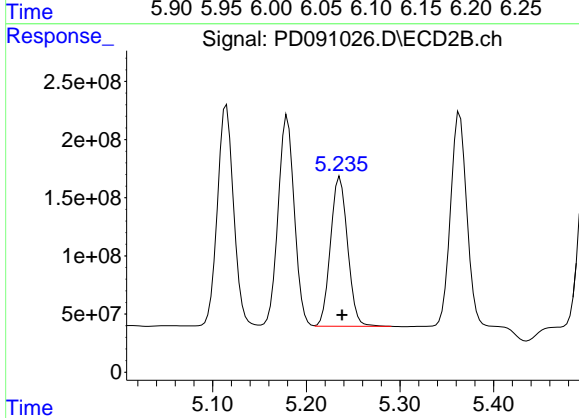
R.T.: 4.862 min  
Delta R.T.: -0.002 min  
Response: 2108040559  
Conc: 49.44 ng/ml



#9 Endosulfan I

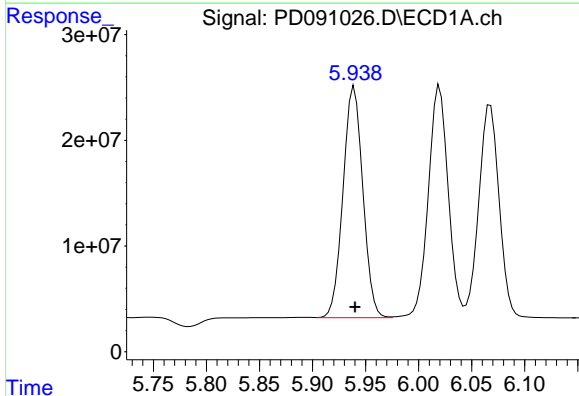
R.T.: 6.068 min  
 Delta R.T.: 0.000 min  
 Response: 267041953  
 Conc: 48.23 ng/ml

Instrument :  
 ECD\_D  
 ClientSampleId :



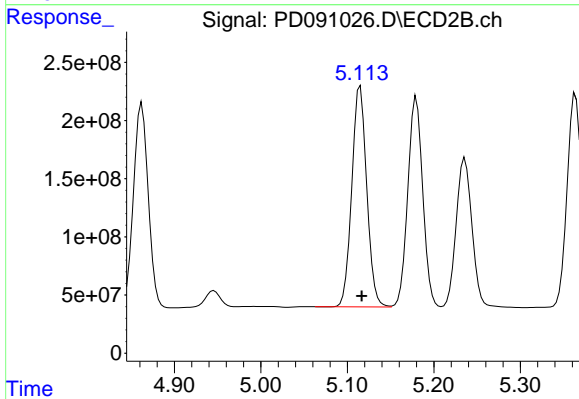
#9 Endosulfan I

R.T.: 5.236 min  
 Delta R.T.: -0.002 min  
 Response: 1626593367  
 Conc: 41.29 ng/ml



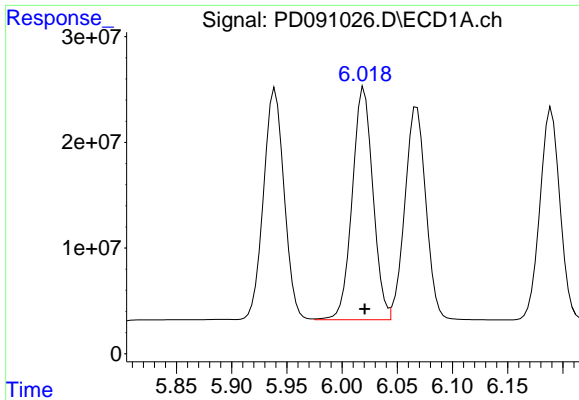
#10 gamma-Chlordane

R.T.: 5.939 min  
 Delta R.T.: 0.000 min  
 Response: 283935440  
 Conc: 47.87 ng/ml



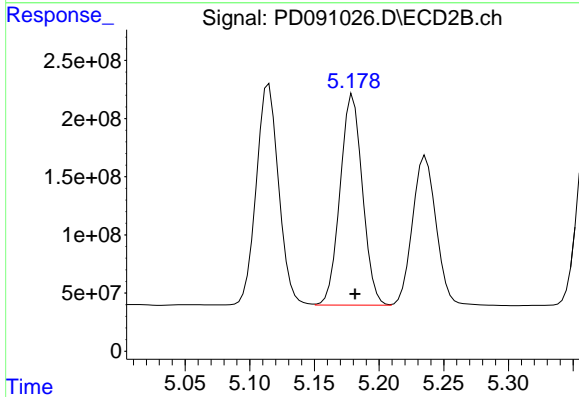
#10 gamma-Chlordane

R.T.: 5.115 min  
 Delta R.T.: -0.002 min  
 Response: 2277341107  
 Conc: 50.67 ng/ml

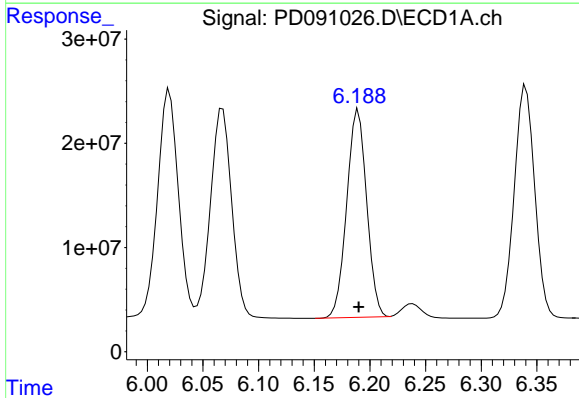


#11 alpha-Chlordane  
 R.T.: 6.020 min  
 Delta R.T.: 0.000 min  
 Response: 286760172  
 Conc: 46.40 ng/ml

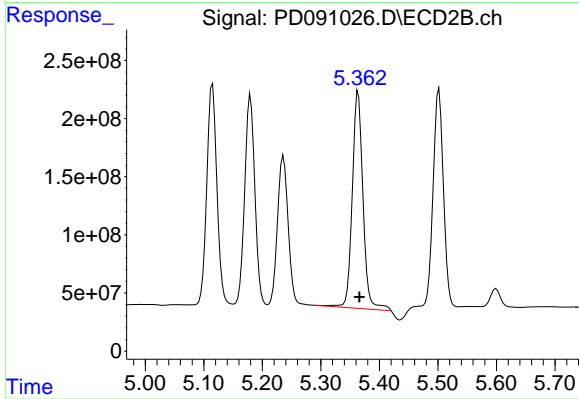
Instrument :  
 ECD\_D  
 ClientSampleId :



#11 alpha-Chlordane  
 R.T.: 5.180 min  
 Delta R.T.: -0.002 min  
 Response: 2170837893  
 Conc: 50.32 ng/ml

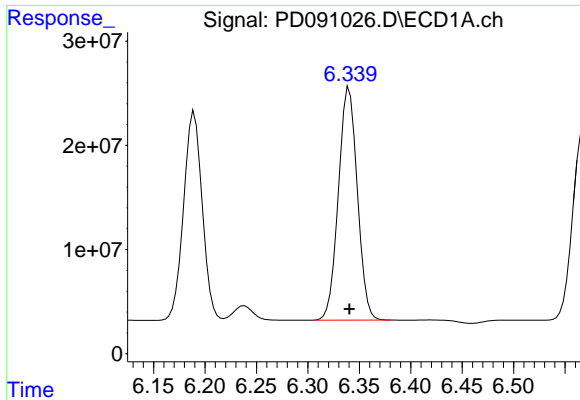


#12 4,4'-DDE  
 R.T.: 6.190 min  
 Delta R.T.: 0.000 min  
 Response: 248737501  
 Conc: 46.70 ng/ml



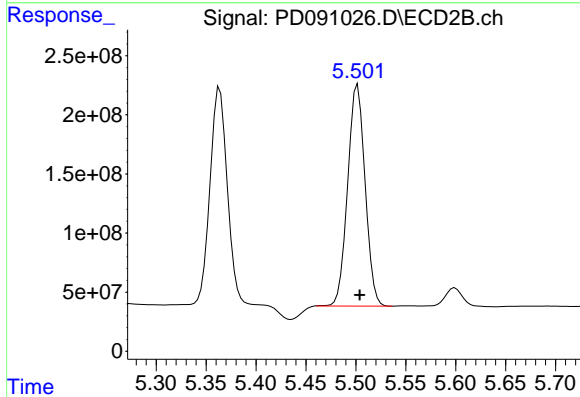
#12 4,4'-DDE  
 R.T.: 5.364 min  
 Delta R.T.: -0.002 min  
 Response: 2372248043  
 Conc: 54.11 ng/ml



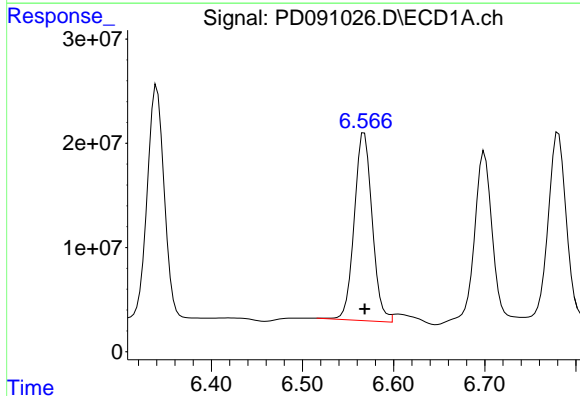


#13 Dieldrin  
 R.T.: 6.340 min  
 Delta R.T.: 0.000 min  
 Response: 285949567  
 Conc: 49.04 ng/ml

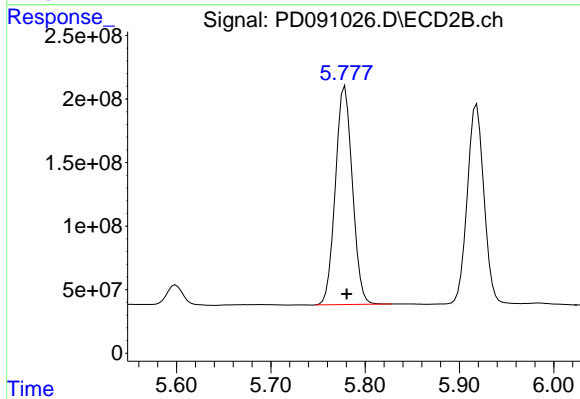
Instrument :  
 ECD\_D  
 ClientSampleId :



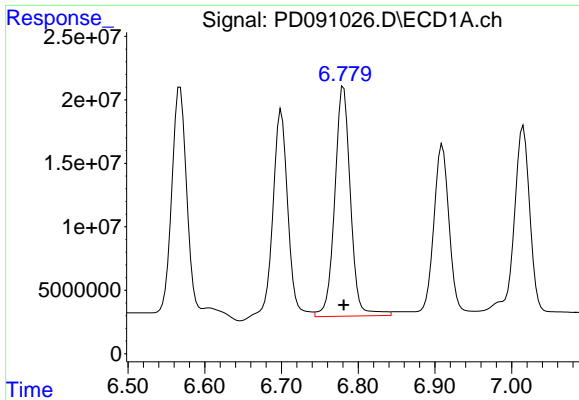
#13 Dieldrin  
 R.T.: 5.502 min  
 Delta R.T.: -0.002 min  
 Response: 2276891548  
 Conc: 51.53 ng/ml



#14 Endrin  
 R.T.: 6.568 min  
 Delta R.T.: 0.000 min  
 Response: 246360216  
 Conc: 49.73 ng/ml



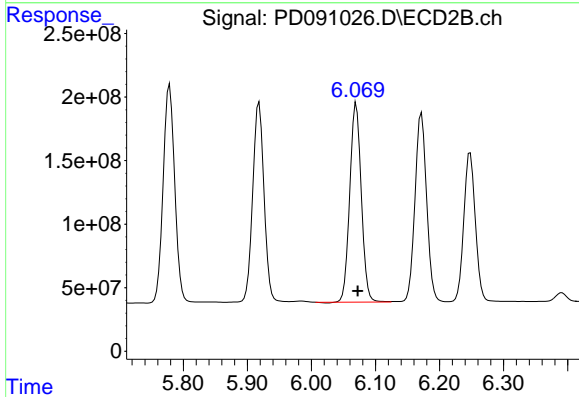
#14 Endrin  
 R.T.: 5.779 min  
 Delta R.T.: -0.002 min  
 Response: 2150777850  
 Conc: 53.11 ng/ml



#15 Endosulfan II

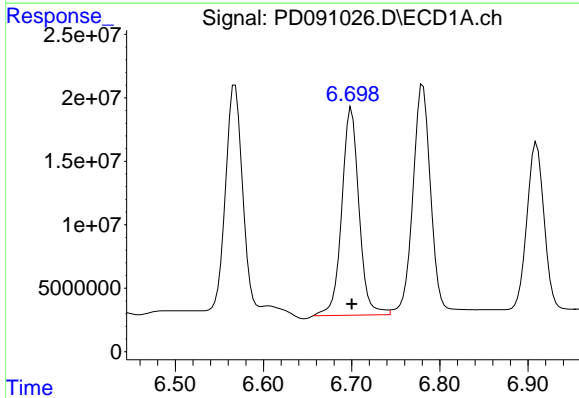
R.T.: 6.781 min  
 Delta R.T.: 0.000 min  
 Response: 258522133  
 Conc: 51.70 ng/ml

Instrument :  
 ECD\_D  
 ClientSampleId :



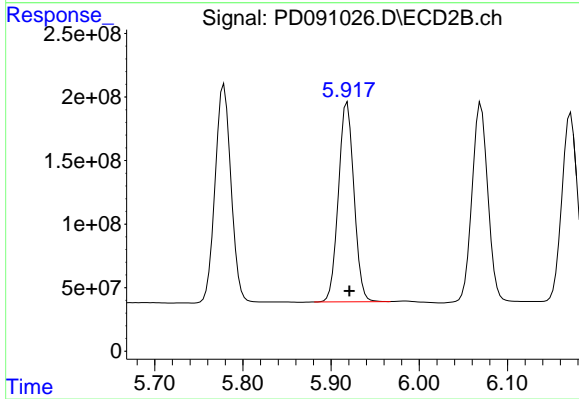
#15 Endosulfan II

R.T.: 6.070 min  
 Delta R.T.: -0.002 min  
 Response: 1952168747  
 Conc: 51.98 ng/ml



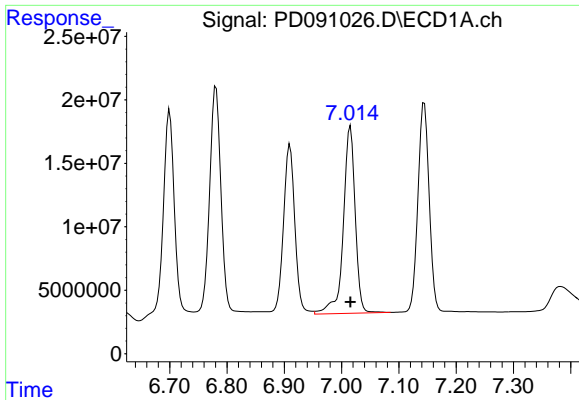
#16 4,4'-DDD

R.T.: 6.700 min  
 Delta R.T.: 0.000 min  
 Response: 222265277  
 Conc: 54.82 ng/ml



#16 4,4'-DDD

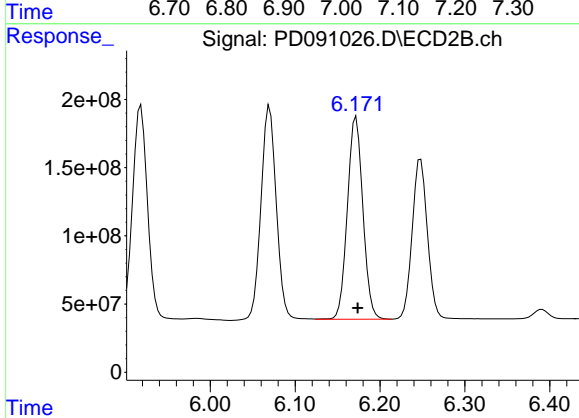
R.T.: 5.918 min  
 Delta R.T.: -0.002 min  
 Response: 1922550842  
 Conc: 52.76 ng/ml



#17 4,4'-DDT

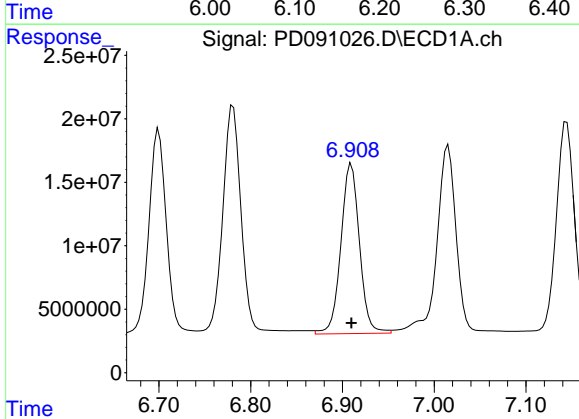
R.T.: 7.015 min  
 Delta R.T.: 0.000 min  
 Response: 213722385  
 Conc: 51.99 ng/ml

Instrument :  
 ECD\_D  
 ClientSampleId :



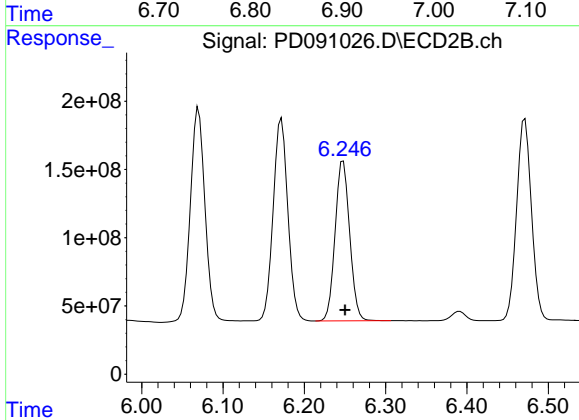
#17 4,4'-DDT

R.T.: 6.172 min  
 Delta R.T.: -0.002 min  
 Response: 1881459439  
 Conc: 53.64 ng/ml



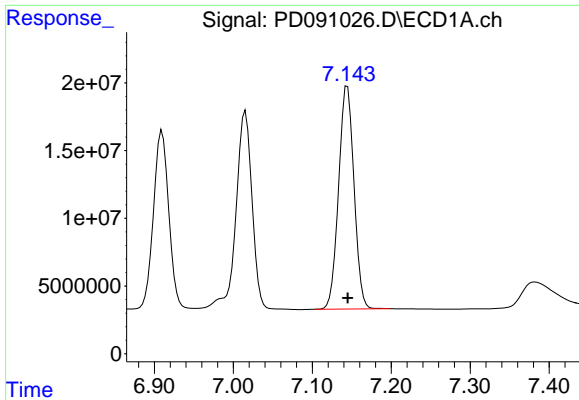
#18 Endrin aldehyde

R.T.: 6.910 min  
 Delta R.T.: 0.000 min  
 Response: 188549124  
 Conc: 51.48 ng/ml



#18 Endrin aldehyde

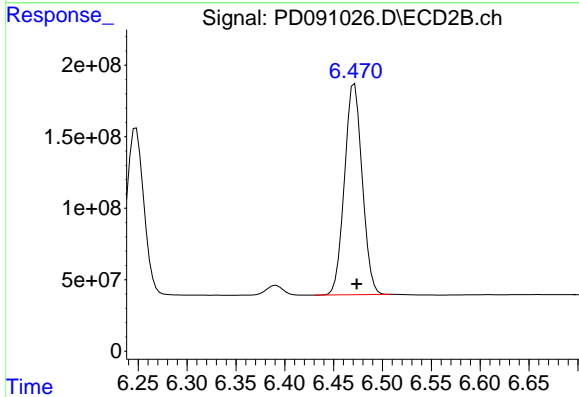
R.T.: 6.248 min  
 Delta R.T.: -0.002 min  
 Response: 1458467078  
 Conc: 52.67 ng/ml



#19 Endosulfan Sulfate

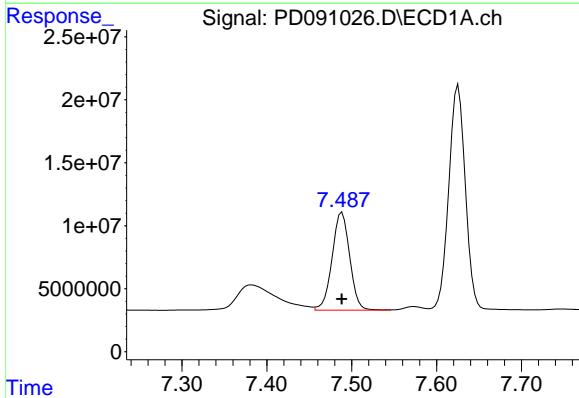
R.T.: 7.144 min  
 Delta R.T.: 0.000 min  
 Response: 223150855  
 Conc: 48.11 ng/ml

Instrument :  
 ECD\_D  
 ClientSampleId :



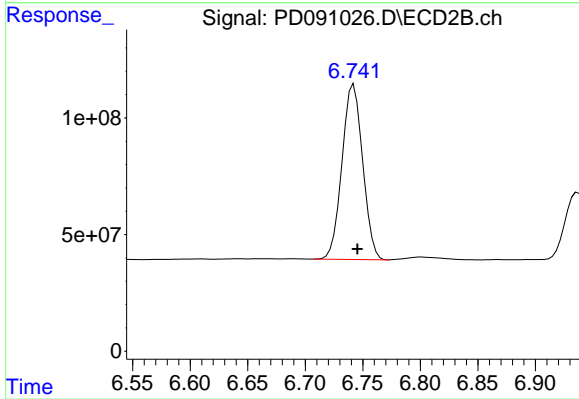
#19 Endosulfan Sulfate

R.T.: 6.471 min  
 Delta R.T.: -0.002 min  
 Response: 1864505968  
 Conc: 52.02 ng/ml



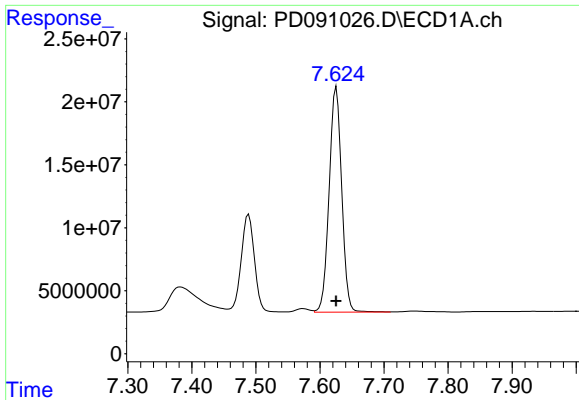
#20 Methoxychlor

R.T.: 7.489 min  
 Delta R.T.: 0.000 min  
 Response: 112106182  
 Conc: 52.74 ng/ml



#20 Methoxychlor

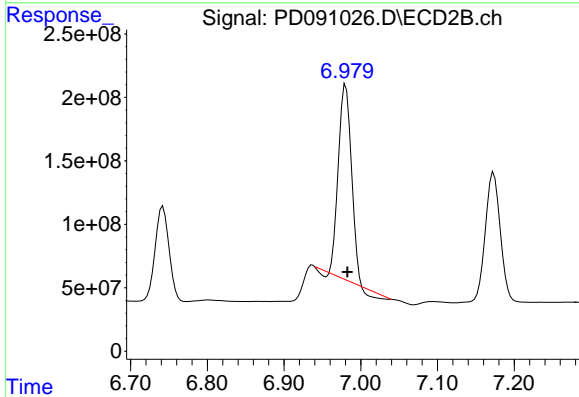
R.T.: 6.742 min  
 Delta R.T.: -0.003 min  
 Response: 942291818  
 Conc: 54.07 ng/ml



#21 Endrin ketone

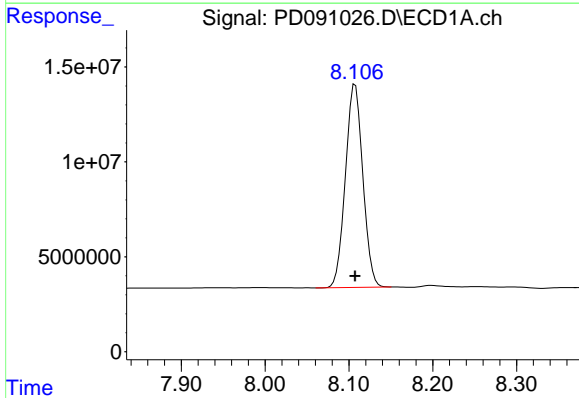
R.T.: 7.626 min  
 Delta R.T.: 0.000 min  
 Response: 243725355  
 Conc: 50.16 ng/ml

Instrument :  
 ECD\_D  
 ClientSampleId :



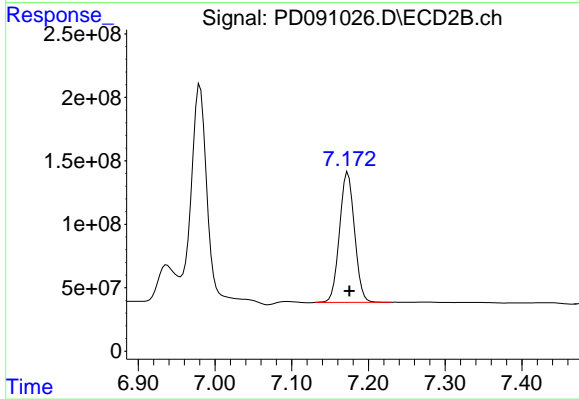
#21 Endrin ketone

R.T.: 6.980 min  
 Delta R.T.: -0.002 min  
 Response: 1719661335  
 Conc: 45.59 ng/ml



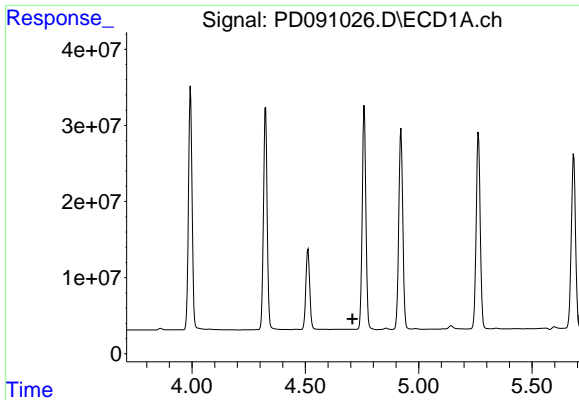
#22 Mirex

R.T.: 8.108 min  
 Delta R.T.: 0.000 min  
 Response: 154757442  
 Conc: 48.35 ng/ml



#22 Mirex

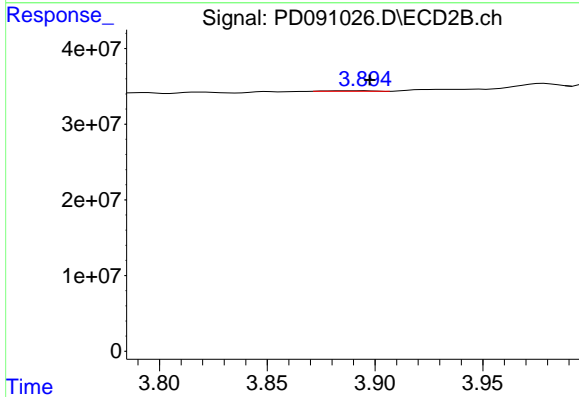
R.T.: 7.173 min  
 Delta R.T.: -0.002 min  
 Response: 1395530014  
 Conc: 54.32 ng/ml



#23 Chlordane-1

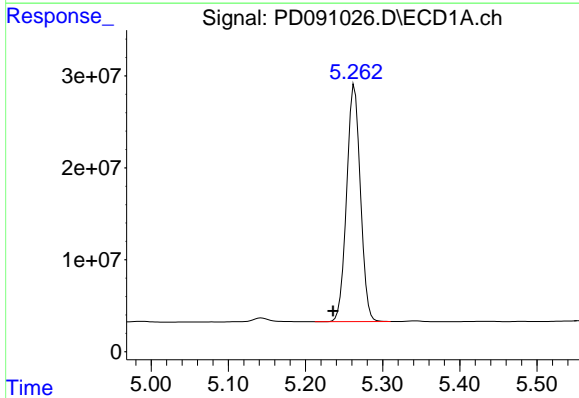
R.T.: 0.000 min  
 Exp R.T.: 4.709 min  
 Response: 0  
 Conc: N.D.

Instrument :  
 ECD\_D  
 ClientSampleId :



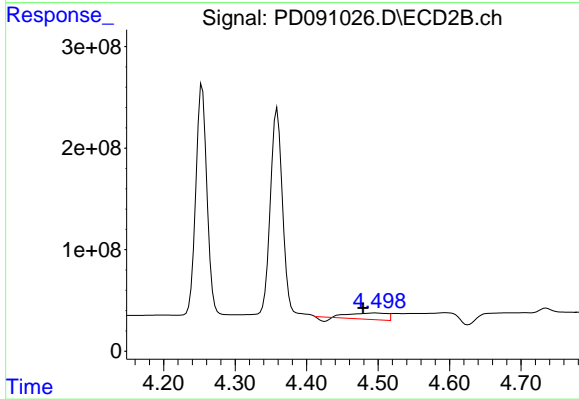
#23 Chlordane-1

R.T.: 3.889 min  
 Delta R.T.: -0.009 min  
 Response: 1068889  
 Conc: 0.86 ng/ml



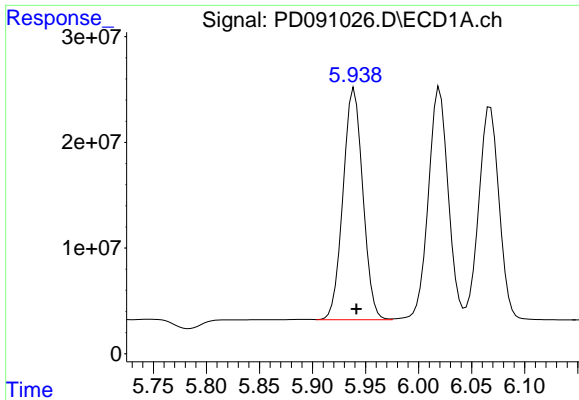
#24 Chlordane-2

R.T.: 5.263 min  
 Delta R.T.: 0.028 min  
 Response: 318312419  
 Conc: 1648.18 ng/ml



#24 Chlordane-2

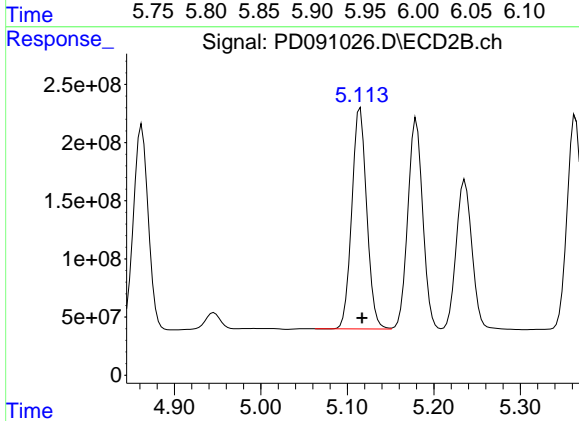
R.T.: 4.497 min  
 Delta R.T.: 0.019 min  
 Response: 208071807  
 Conc: 159.50 ng/ml



#25 Chlordane-3

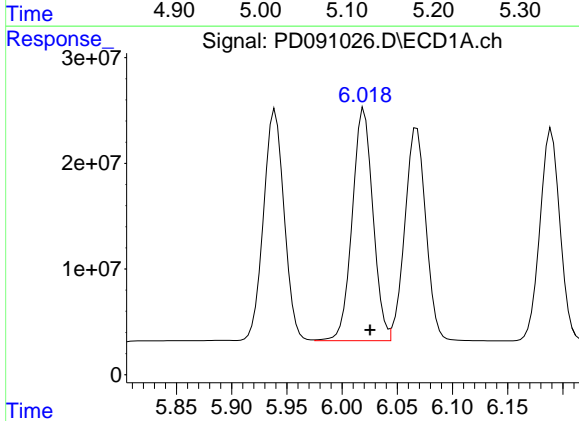
R.T.: 5.939 min  
 Delta R.T.: -0.002 min  
 Response: 283935440  
 Conc: 372.25 ng/ml

Instrument :  
 ECD\_D  
 ClientSampleId :



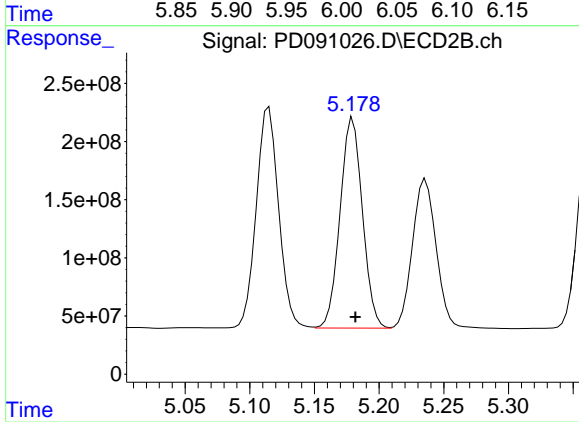
#25 Chlordane-3

R.T.: 5.115 min  
 Delta R.T.: -0.002 min  
 Response: 2277341107  
 Conc: 585.20 ng/ml



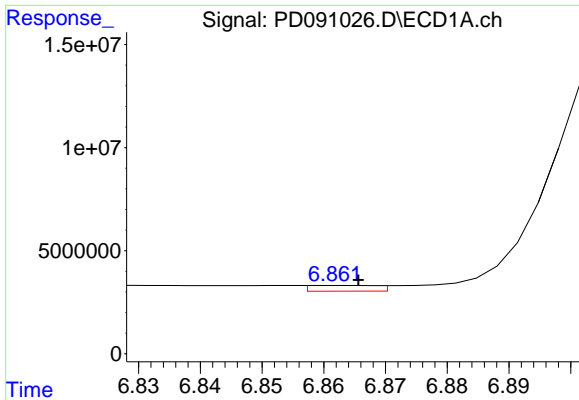
#26 Chlordane-4

R.T.: 6.020 min  
 Delta R.T.: -0.005 min  
 Response: 286760172  
 Conc: 295.97 ng/ml



#26 Chlordane-4

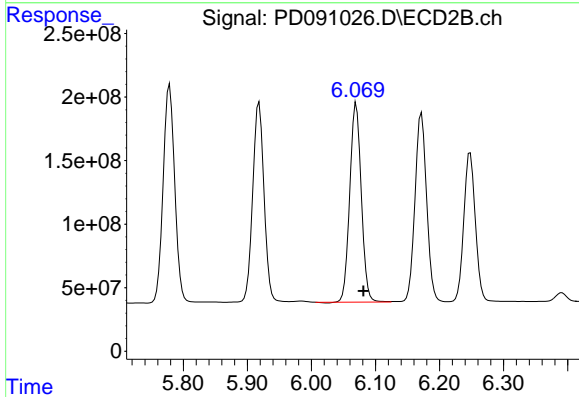
R.T.: 5.180 min  
 Delta R.T.: -0.002 min  
 Response: 2170837893  
 Conc: 649.71 ng/ml



#27 Chlordane-5

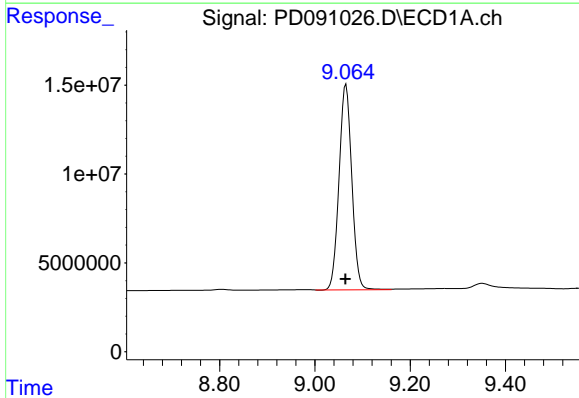
R.T.: 6.863 min  
 Delta R.T.: -0.002 min  
 Response: 2117673  
 Conc: 14.09 ng/ml

Instrument :  
 ECD\_D  
 ClientSampleId :



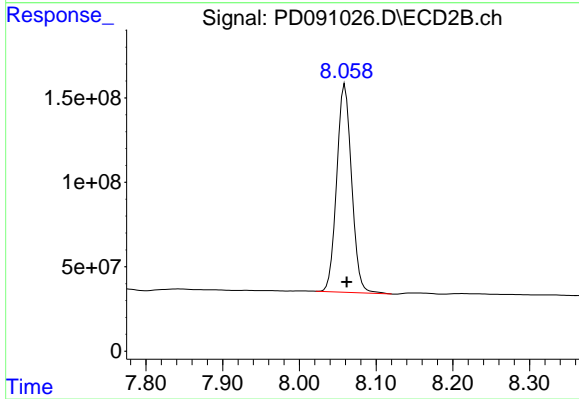
#27 Chlordane-5

R.T.: 6.070 min  
 Delta R.T.: -0.011 min  
 Response: 1952168747  
 Conc: 1322.58 ng/ml



#28 Decachlorobiphenyl

R.T.: 9.065 min  
 Delta R.T.: 0.000 min  
 Response: 214089603  
 Conc: 45.77 ng/ml



#28 Decachlorobiphenyl

R.T.: 8.059 min  
 Delta R.T.: -0.002 min  
 Response: 1661969510  
 Conc: 54.87 ng/ml