

Data Path : Z:\pestpcbsrv\HPCHEM1\ECD\_D\Data\PD110725\  
 Data File : PD091028.D  
 Signal(s) : Signal #1: ECD1A.ch Signal #2: ECD2B.ch  
 Acq On : 07 Nov 2025 16:46  
 Operator : AR\AJ  
 Sample : PB170447BS  
 Misc :  
 ALS Vial : 13 Sample Multiplier: 1

Instrument :  
 ECD\_D  
 ClientSampleId :

Integration File signal 1: autoint1.e  
 Integration File signal 2: autoint2.e  
 Quant Time: Nov 10 10:58:50 2025  
 Quant Method : Z:\pestpcbsrv\HPCHEM1\ECD\_D\Method\PD101725.M  
 Quant Title : GC Extractables  
 QLast Update : Fri Oct 17 17:43:28 2025  
 Response via : Initial Calibration  
 Integrator: ChemStation

Volume Inj. : 1 µl  
 Signal #1 Phase : ZB-MR2 Signal #2 Phase: ZB-MR2  
 Signal #1 Info : 30M x 0.32mm x0.5 Signal #2 Info : 30M x 0.32mm x 0.25µm

	Compound	RT#1	RT#2	Resp#1	Resp#2	ng/ml	ng/ml
-----							
System Monitoring Compounds							
1)	SA Tetrachlo...	3.544	2.873	63400181	639.5E6	20.359	21.475
28)	SA Decachlor...	9.066	8.060	92223201	706.3E6	19.714	23.317
Target Compounds							
2)	A alpha-BHC	3.993	3.385	62695290	559.0E6	8.735	10.940 #
3)	MA gamma-BHC...	4.324	3.721	60687192	516.5E6	8.926	10.932
4)	MA Heptachlor	4.922	4.072	65212774	521.4E6	11.667	11.691
5)	MB Aldrin	5.264	4.358	61244047	515.1E6	9.354	11.121
6)	B beta-BHC	4.512	4.017	27806806	227.8E6	10.615	11.486
7)	B delta-BHC	4.760	4.253	56239650	482.9E6	8.317	10.120
8)	Heptachlo...	5.684	4.862	56138539	476.3E6	9.697	11.171
9)	A Endosulfan I	6.068	5.236	54545056	445.6E6	9.852	11.313
10)	B gamma-Chl...	5.940	5.114	56105656	494.0E6	9.459	10.991
11)	B alpha-Chl...	6.021	5.179	61263227	479.5E6	9.913	11.116
12)	B 4,4'-DDE	6.190	5.364	48452740	490.3E6	9.096	11.185
13)	MA Dieldrin	6.341	5.502	55252196	502.6E6	9.475	11.376
14)	MA Endrin	6.569	5.778	44922629	488.7E6	9.068	12.070 #
15)	B Endosulfa...	6.781	6.070	46831092	434.7E6	9.366	11.576
16)	A 4,4'-DDD	6.700	5.918	39207202	420.1E6	9.671	11.529
17)	MA 4,4'-DDT	7.016	6.172	39988011	385.8E6	9.728	11.001
18)	B Endrin al...	6.910	6.249	35912422	304.6E6	9.805	10.998
19)	B Endosulfa...	7.145	6.472	44775199	402.3E6	9.654	11.224
20)	A Methoxychlor	7.489	6.743	22750603	202.0E6	10.703	11.590
21)	B Endrin ke...	7.626	6.981	49209304	463.8E6	10.128	12.296
22)	Mirex	8.108	7.173	36694315	328.5E6	11.464	12.788
23)	Chlordane-1	0.000	3.895	0	1754715	N.D.	1.408 #
24)	Chlordane-2	5.264f	4.495	61244047	7299194	317.114	5.595 #
25)	Chlordane-3	5.940	5.114	56105656	494.0E6	73.556	126.947 #
26)	Chlordane-4	6.021	5.179	61263227	479.5E6	63.231	143.520 #
27)	Chlordane-5	0.000	6.070	0	434.7E6	N.D.	294.523 #

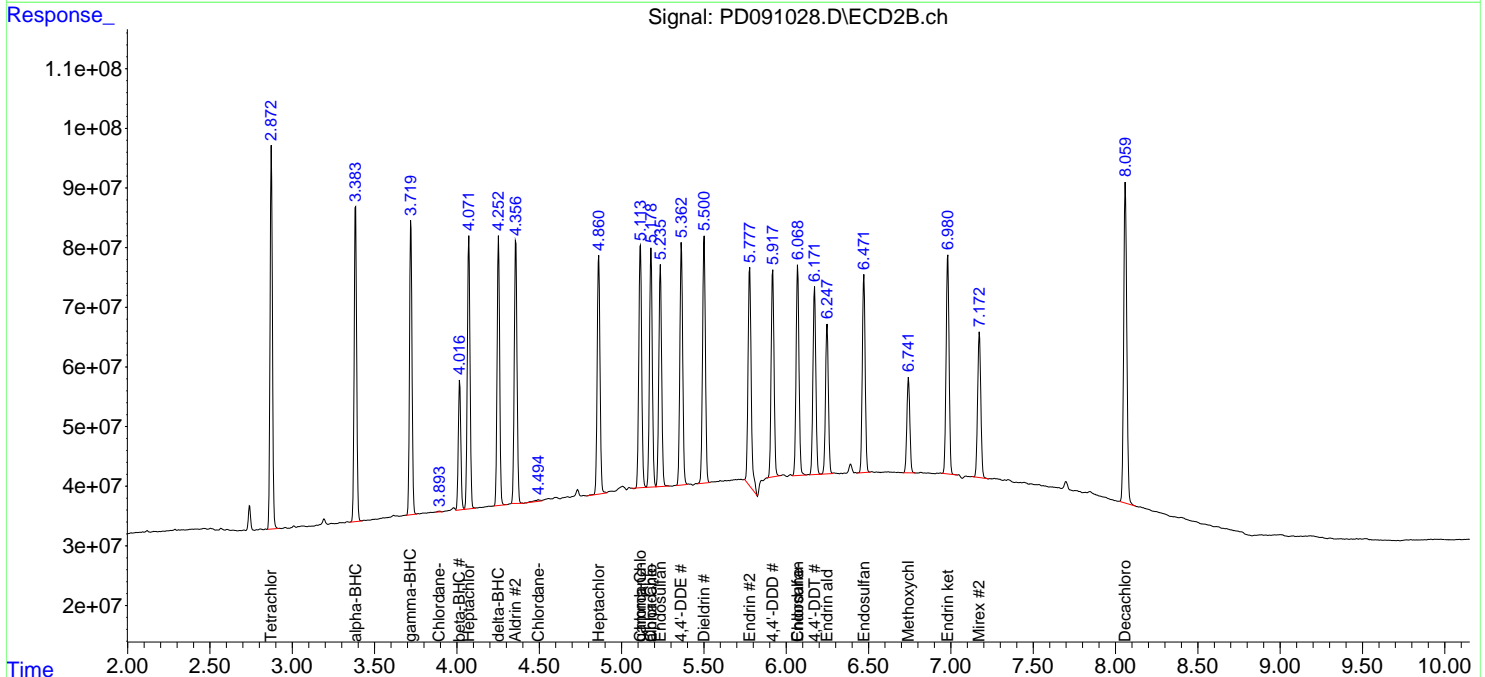
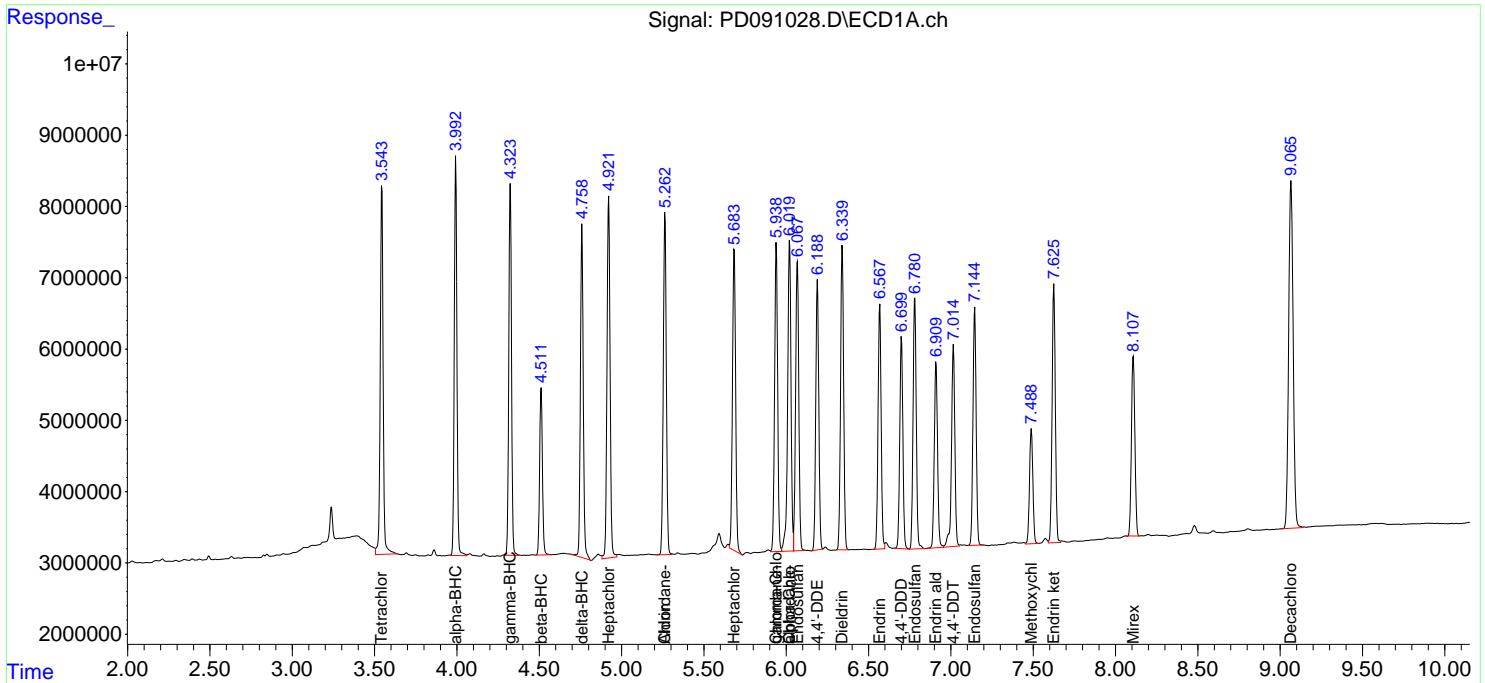
(f)=RT Delta > 1/2 Window (#)=Amounts differ by > 25% (m)=manual int.

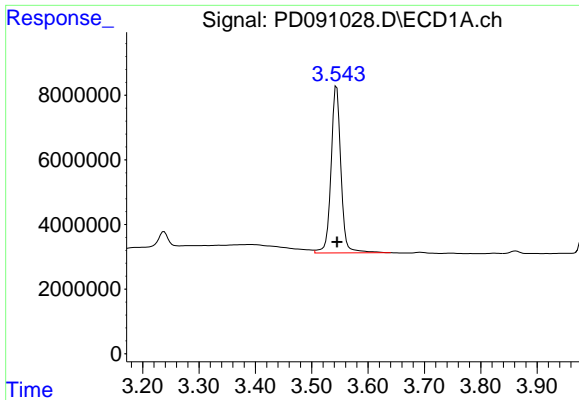
Data Path : Z:\pestpcbsrv\HPCHEM1\ECD\_D\Data\PD110725\  
 Data File : PD091028.D  
 Signal(s) : Signal #1: ECD1A.ch Signal #2: ECD2B.ch  
 Acq On : 07 Nov 2025 16:46  
 Operator : AR\AJ  
 Sample : PB170447BS  
 Misc :  
 ALS Vial : 13 Sample Multiplier: 1

Instrument :  
 ECD\_D  
 ClientSampleId :

Integration File signal 1: autoint1.e  
 Integration File signal 2: autoint2.e  
 Quant Time: Nov 10 10:58:50 2025  
 Quant Method : Z:\pestpcbsrv\HPCHEM1\ECD\_D\Method\PD101725.M  
 Quant Title : GC Extractables  
 QLast Update : Fri Oct 17 17:43:28 2025  
 Response via : Initial Calibration  
 Integrator: ChemStation

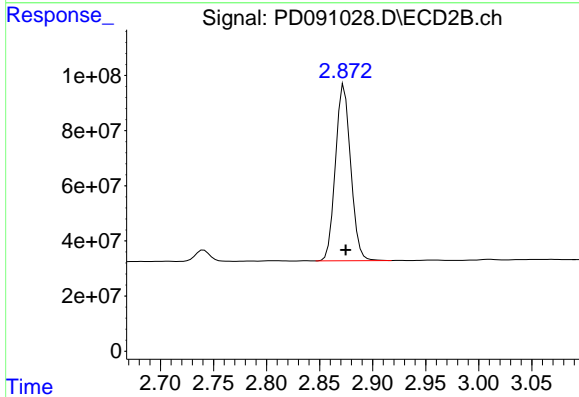
Volume Inj. : 1 µl  
 Signal #1 Phase : ZB-MR1 Signal #2 Phase: ZB-MR2  
 Signal #1 Info : 30M x 0.32mm x0.5 Signal #2 Info : 30M x 0.32mm x 0.25µm



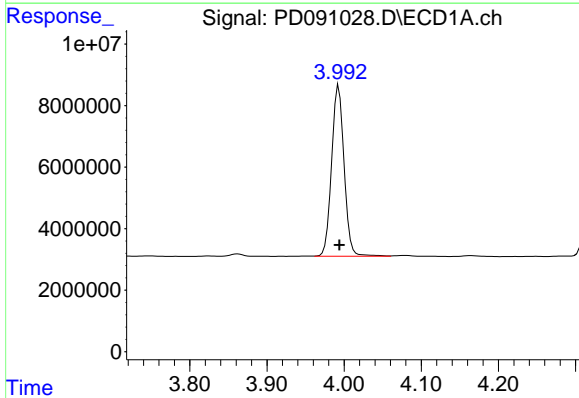


#1 Tetrachloro-m-xylene  
 R.T.: 3.544 min  
 Delta R.T.: 0.000 min  
 Response: 63400181  
 Conc: 20.36 ng/ml

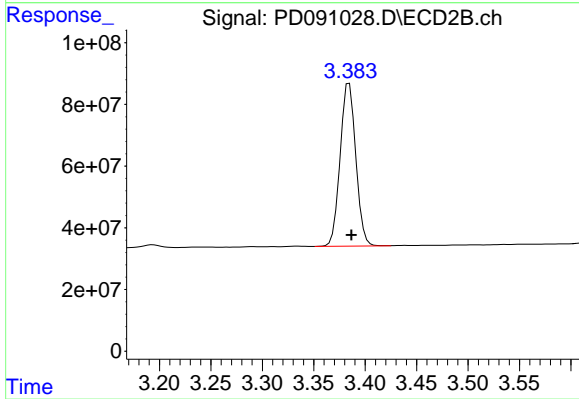
Instrument :  
 ECD\_D  
 ClientSampleId :



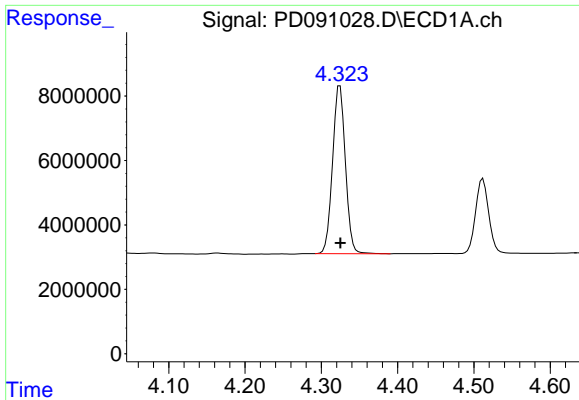
#1 Tetrachloro-m-xylene  
 R.T.: 2.873 min  
 Delta R.T.: -0.002 min  
 Response: 639462951  
 Conc: 21.47 ng/ml



#2 alpha-BHC  
 R.T.: 3.993 min  
 Delta R.T.: 0.000 min  
 Response: 62695290  
 Conc: 8.74 ng/ml

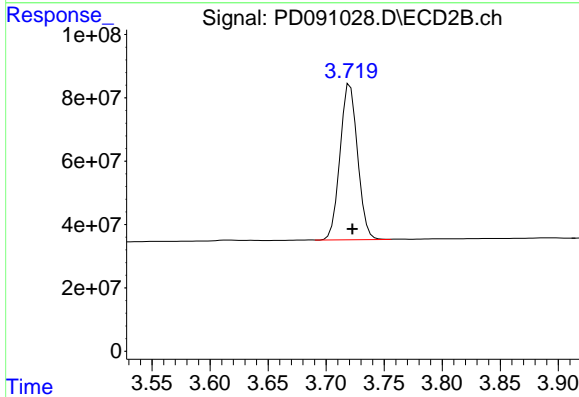


#2 alpha-BHC  
 R.T.: 3.385 min  
 Delta R.T.: -0.002 min  
 Response: 558971554  
 Conc: 10.94 ng/ml

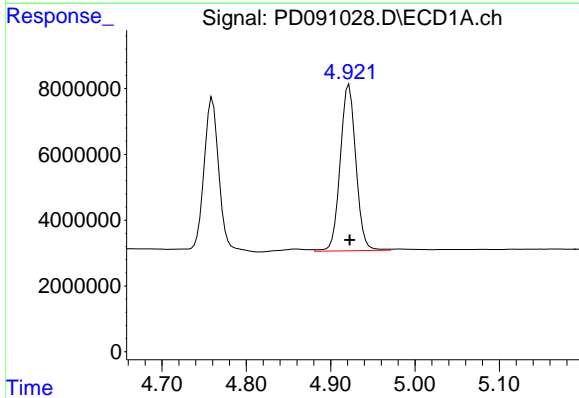


#3 gamma-BHC (Lindane)  
 R.T.: 4.324 min  
 Delta R.T.: 0.000 min  
 Response: 60687192  
 Conc: 8.93 ng/ml

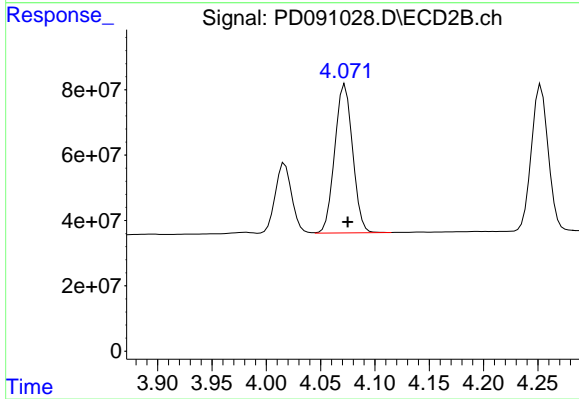
Instrument :  
 ECD\_D  
 ClientSampleId :



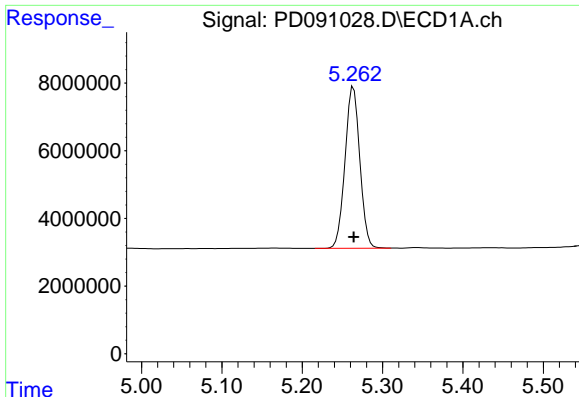
#3 gamma-BHC (Lindane)  
 R.T.: 3.721 min  
 Delta R.T.: -0.002 min  
 Response: 516509153  
 Conc: 10.93 ng/ml



#4 Heptachlor  
 R.T.: 4.922 min  
 Delta R.T.: 0.000 min  
 Response: 65212774  
 Conc: 11.67 ng/ml



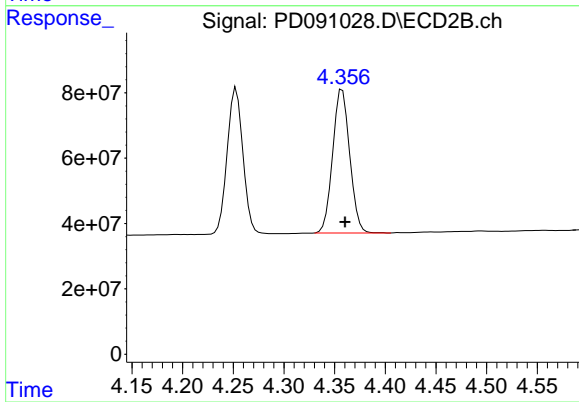
#4 Heptachlor  
 R.T.: 4.072 min  
 Delta R.T.: -0.002 min  
 Response: 521430167  
 Conc: 11.69 ng/ml



#5 Aldrin

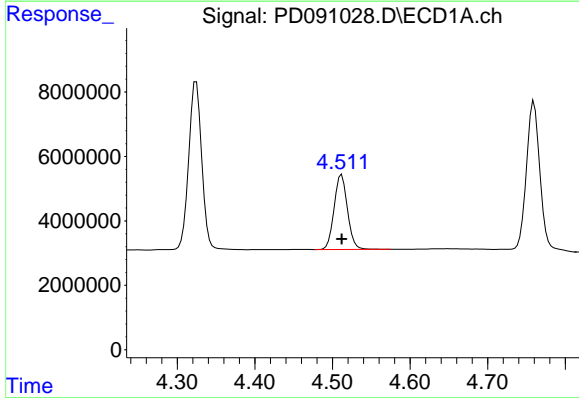
R.T.: 5.264 min  
 Delta R.T.: 0.000 min  
 Response: 61244047  
 Conc: 9.35 ng/ml

Instrument :  
 ECD\_D  
 ClientSampleId :



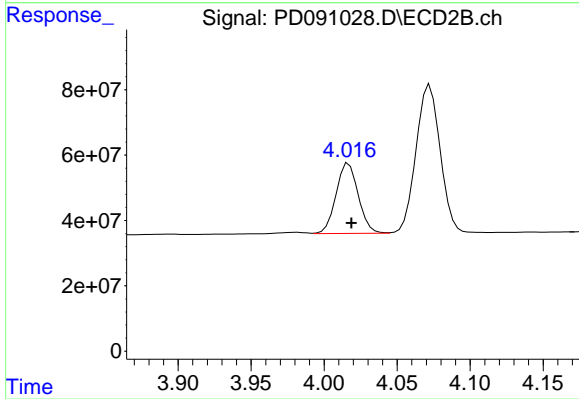
#5 Aldrin

R.T.: 4.358 min  
 Delta R.T.: -0.003 min  
 Response: 51511185  
 Conc: 11.12 ng/ml



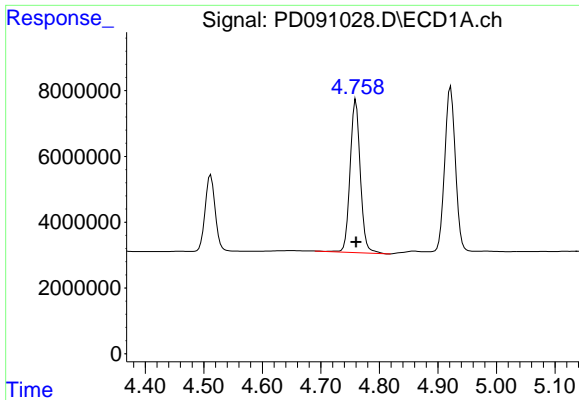
#6 beta-BHC

R.T.: 4.512 min  
 Delta R.T.: 0.000 min  
 Response: 27806806  
 Conc: 10.61 ng/ml



#6 beta-BHC

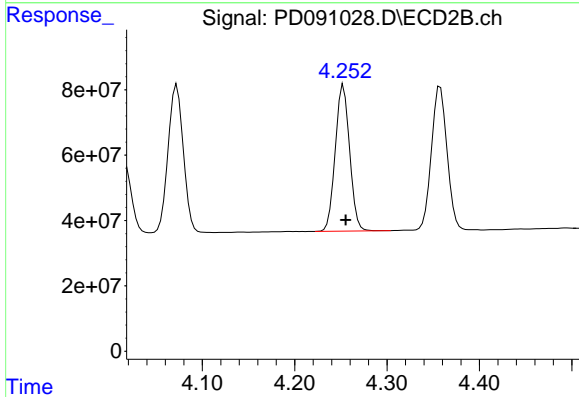
R.T.: 4.017 min  
 Delta R.T.: -0.002 min  
 Response: 227768843  
 Conc: 11.49 ng/ml



#7 delta-BHC

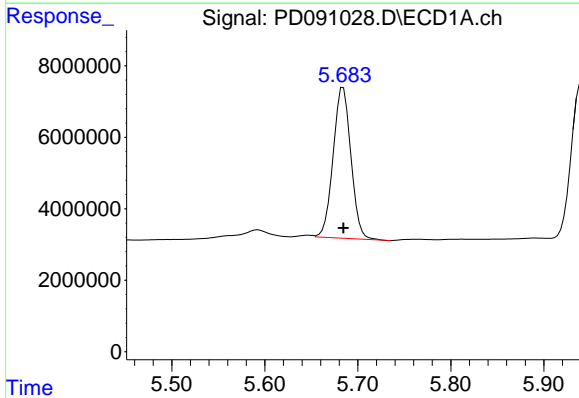
R.T.: 4.760 min  
 Delta R.T.: 0.000 min  
 Response: 56239650  
 Conc: 8.32 ng/ml

Instrument :  
 ECD\_D  
 ClientSampleId :



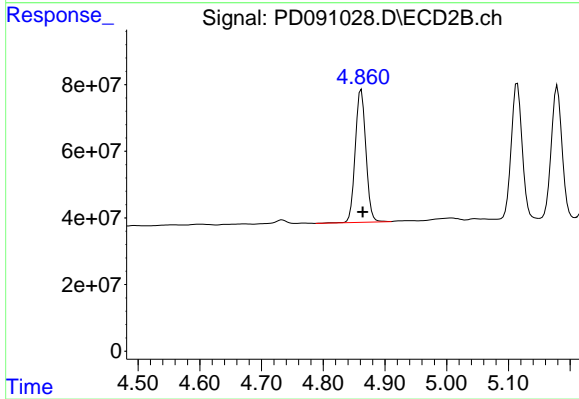
#7 delta-BHC

R.T.: 4.253 min  
 Delta R.T.: -0.002 min  
 Response: 482894440  
 Conc: 10.12 ng/ml



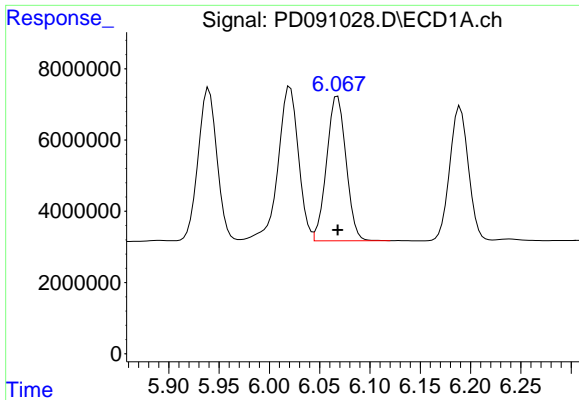
#8 Heptachlor epoxide

R.T.: 5.684 min  
 Delta R.T.: 0.000 min  
 Response: 56138539  
 Conc: 9.70 ng/ml



#8 Heptachlor epoxide

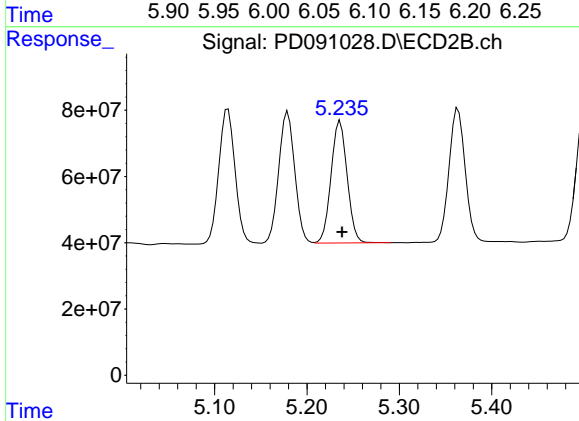
R.T.: 4.862 min  
 Delta R.T.: -0.002 min  
 Response: 476327598  
 Conc: 11.17 ng/ml



#9 Endosulfan I

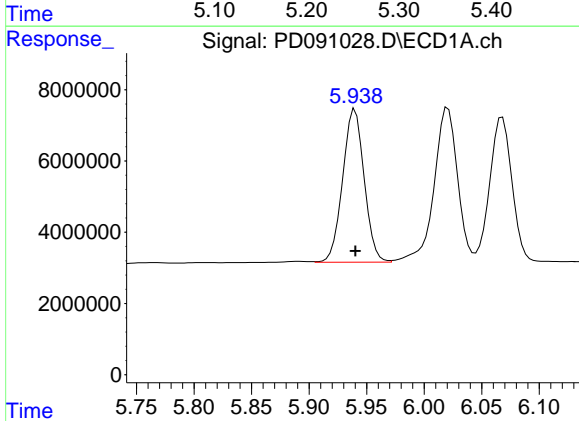
R.T.: 6.068 min  
 Delta R.T.: 0.000 min  
 Response: 54545056  
 Conc: 9.85 ng/ml

Instrument :  
 ECD\_D  
 ClientSampleId :



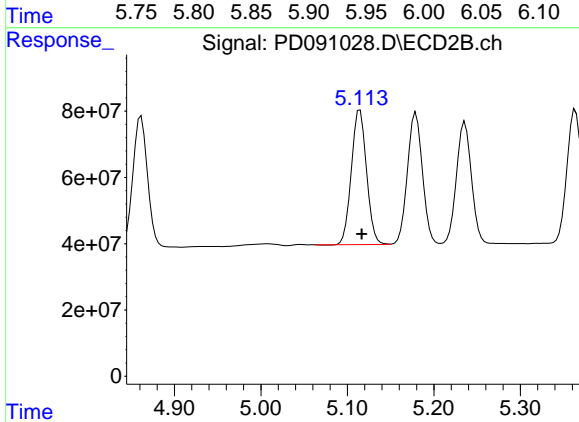
#9 Endosulfan I

R.T.: 5.236 min  
 Delta R.T.: -0.002 min  
 Response: 445612534  
 Conc: 11.31 ng/ml



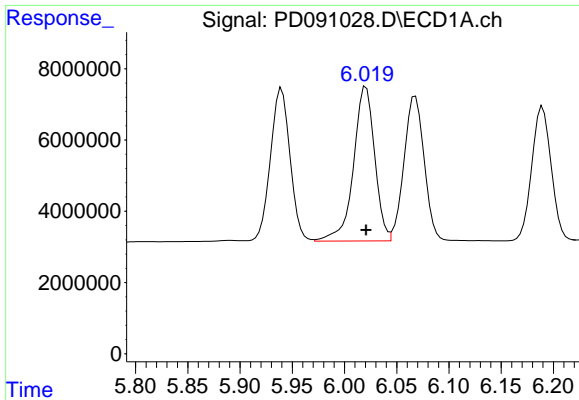
#10 gamma-Chlordane

R.T.: 5.940 min  
 Delta R.T.: 0.000 min  
 Response: 56105656  
 Conc: 9.46 ng/ml



#10 gamma-Chlordane

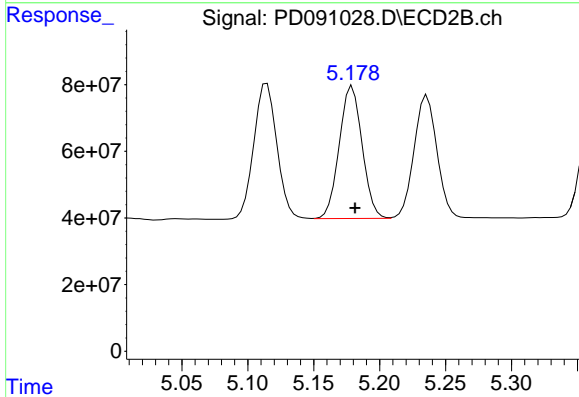
R.T.: 5.114 min  
 Delta R.T.: -0.002 min  
 Response: 494024204  
 Conc: 10.99 ng/ml



#11 alpha-Chlordane

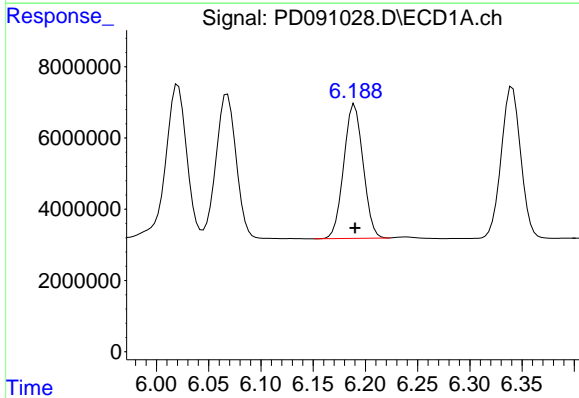
R.T.: 6.021 min  
 Delta R.T.: 0.000 min  
 Response: 61263227  
 Conc: 9.91 ng/ml

Instrument :  
 ECD\_D  
 ClientSampleId :



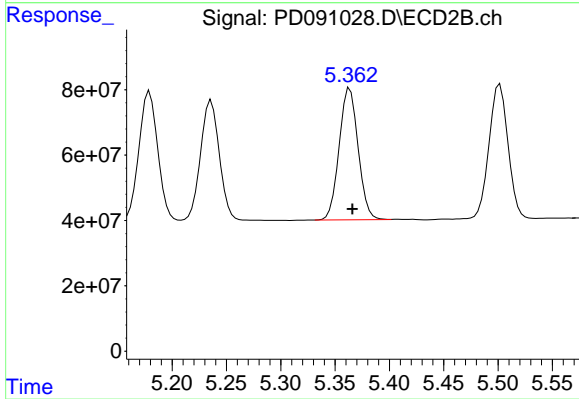
#11 alpha-Chlordane

R.T.: 5.179 min  
 Delta R.T.: -0.002 min  
 Response: 479532927  
 Conc: 11.12 ng/ml



#12 4,4'-DDE

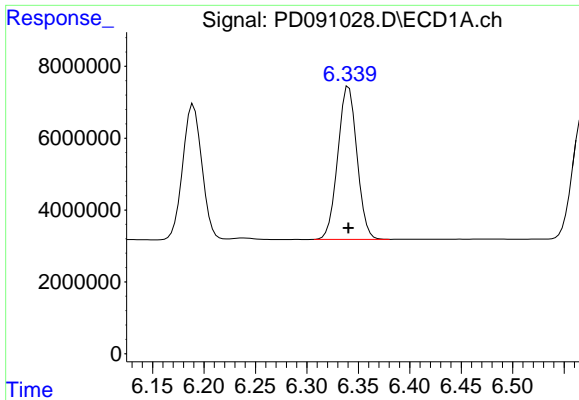
R.T.: 6.190 min  
 Delta R.T.: 0.000 min  
 Response: 48452740  
 Conc: 9.10 ng/ml



#12 4,4'-DDE

R.T.: 5.364 min  
 Delta R.T.: -0.002 min  
 Response: 490311585  
 Conc: 11.18 ng/ml

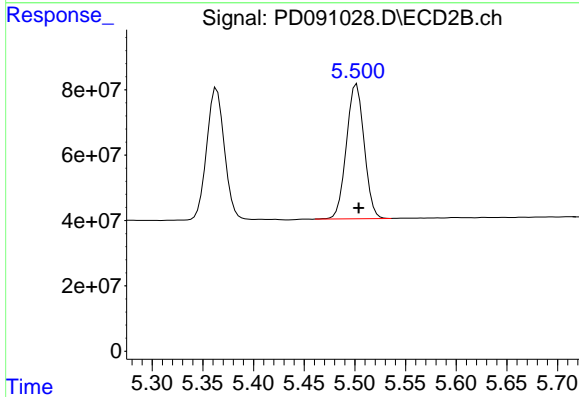




#13 Dieldrin

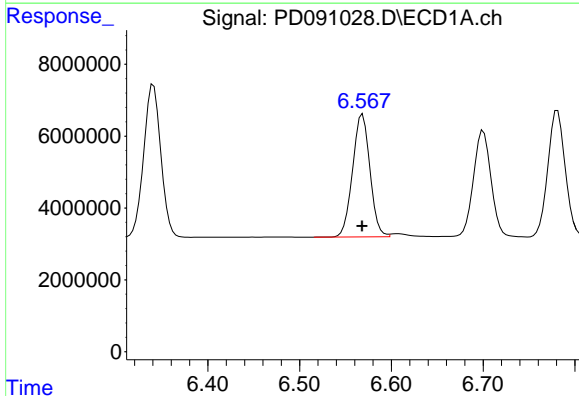
R.T.: 6.341 min  
 Delta R.T.: 0.000 min  
 Response: 55252196  
 Conc: 9.48 ng/ml

Instrument :  
 ECD\_D  
 ClientSampleId :



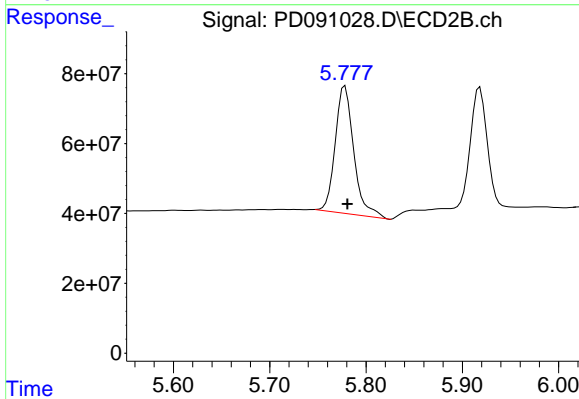
#13 Dieldrin

R.T.: 5.502 min  
 Delta R.T.: -0.002 min  
 Response: 502616740  
 Conc: 11.38 ng/ml



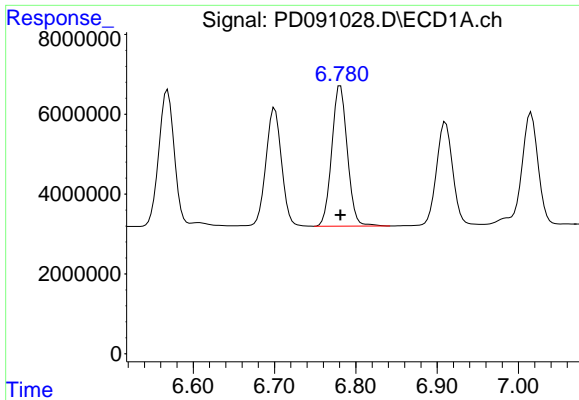
#14 Endrin

R.T.: 6.569 min  
 Delta R.T.: 0.000 min  
 Response: 44922629  
 Conc: 9.07 ng/ml



#14 Endrin

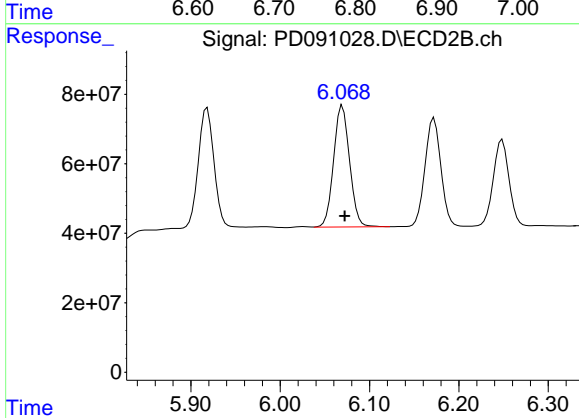
R.T.: 5.778 min  
 Delta R.T.: -0.002 min  
 Response: 488748729  
 Conc: 12.07 ng/ml



#15 Endosulfan II

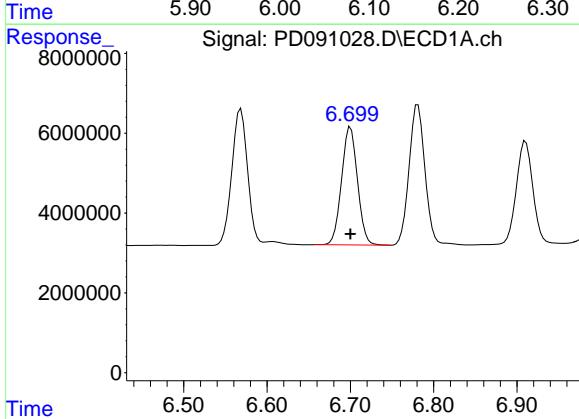
R.T.: 6.781 min  
 Delta R.T.: 0.000 min  
 Response: 46831092  
 Conc: 9.37 ng/ml

Instrument :  
 ECD\_D  
 ClientSampleId :



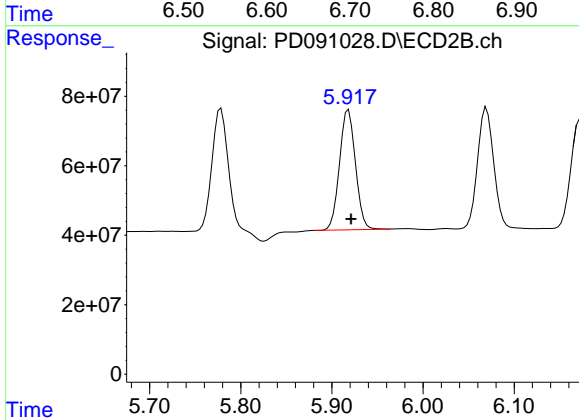
#15 Endosulfan II

R.T.: 6.070 min  
 Delta R.T.: -0.002 min  
 Response: 434726137  
 Conc: 11.58 ng/ml



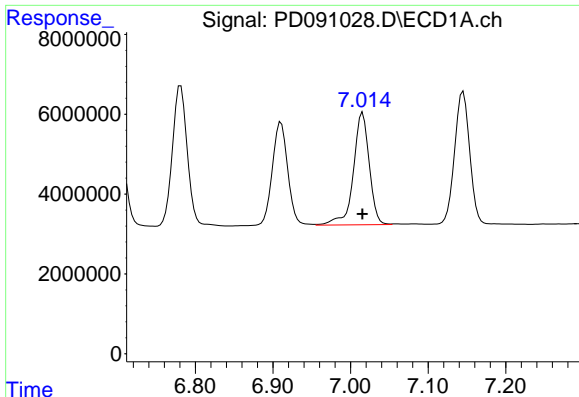
#16 4,4'-DDD

R.T.: 6.700 min  
 Delta R.T.: 0.000 min  
 Response: 39207202  
 Conc: 9.67 ng/ml



#16 4,4'-DDD

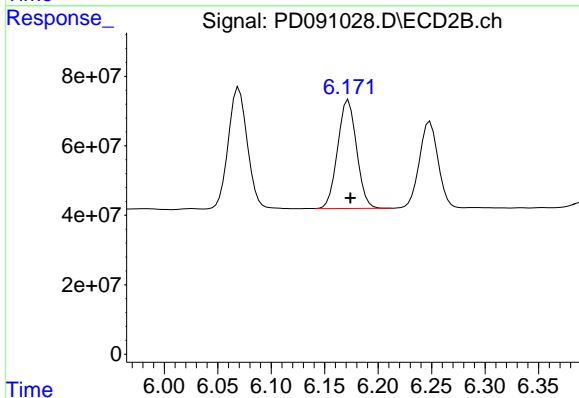
R.T.: 5.918 min  
 Delta R.T.: -0.003 min  
 Response: 420107140  
 Conc: 11.53 ng/ml



#17 4,4'-DDT

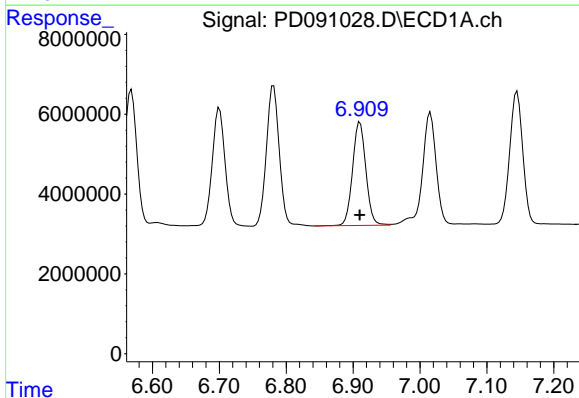
R.T.: 7.016 min  
 Delta R.T.: 0.000 min  
 Response: 39988011  
 Conc: 9.73 ng/ml

Instrument :  
 ECD\_D  
 ClientSampleId :



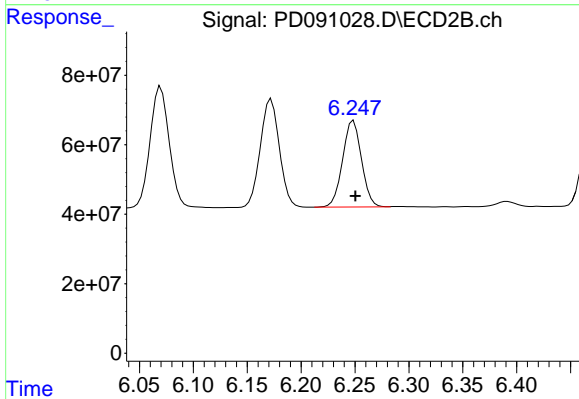
#17 4,4'-DDT

R.T.: 6.172 min  
 Delta R.T.: -0.002 min  
 Response: 385834971  
 Conc: 11.00 ng/ml



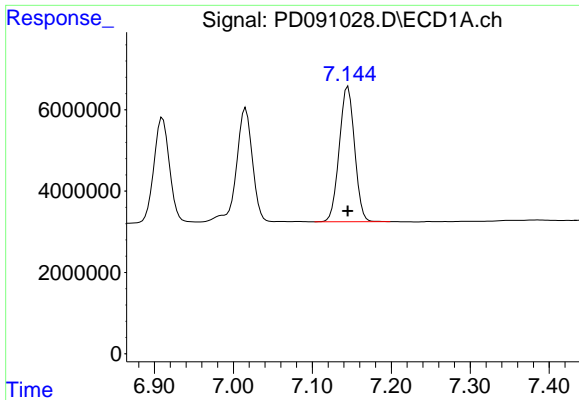
#18 Endrin aldehyde

R.T.: 6.910 min  
 Delta R.T.: 0.000 min  
 Response: 35912422  
 Conc: 9.80 ng/ml



#18 Endrin aldehyde

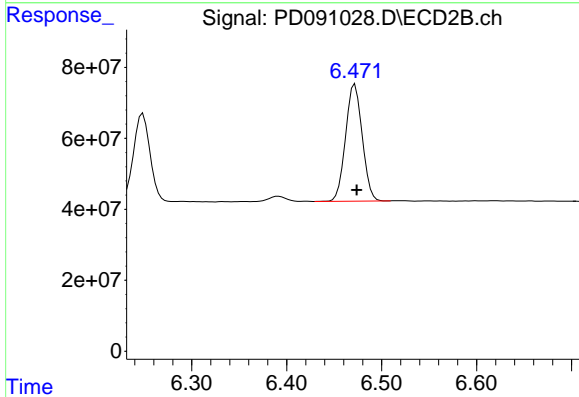
R.T.: 6.249 min  
 Delta R.T.: -0.002 min  
 Response: 304553599  
 Conc: 11.00 ng/ml



#19 Endosulfan Sulfate

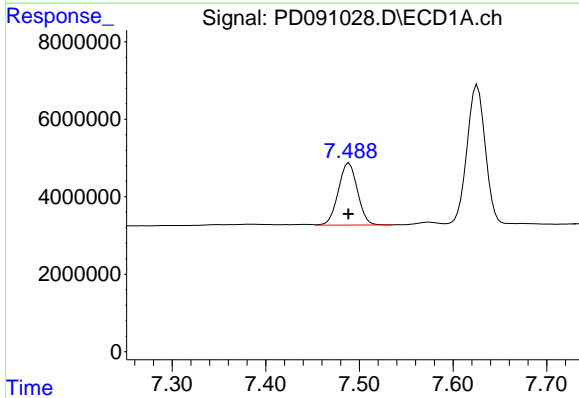
R.T.: 7.145 min  
 Delta R.T.: 0.000 min  
 Response: 44775199  
 Conc: 9.65 ng/ml

Instrument :  
 ECD\_D  
 ClientSampleId :



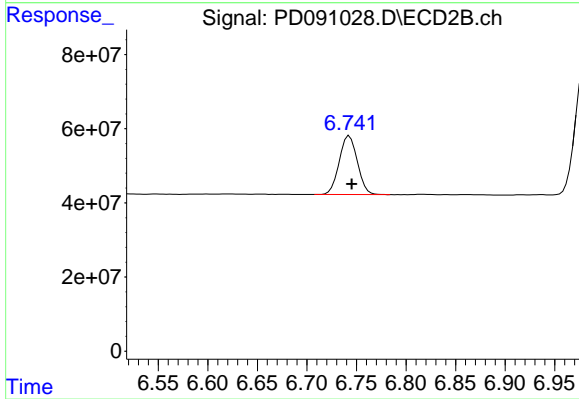
#19 Endosulfan Sulfate

R.T.: 6.472 min  
 Delta R.T.: -0.002 min  
 Response: 402341048  
 Conc: 11.22 ng/ml



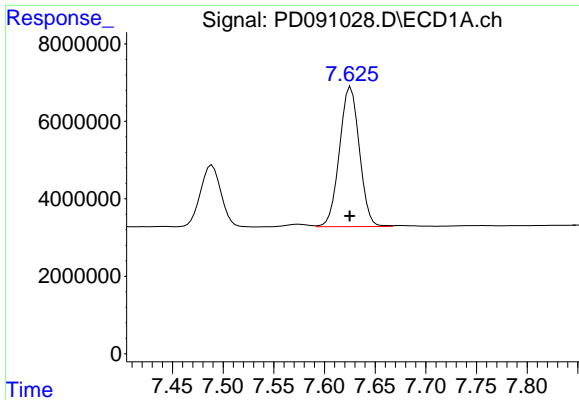
#20 Methoxychlor

R.T.: 7.489 min  
 Delta R.T.: 0.000 min  
 Response: 22750603  
 Conc: 10.70 ng/ml



#20 Methoxychlor

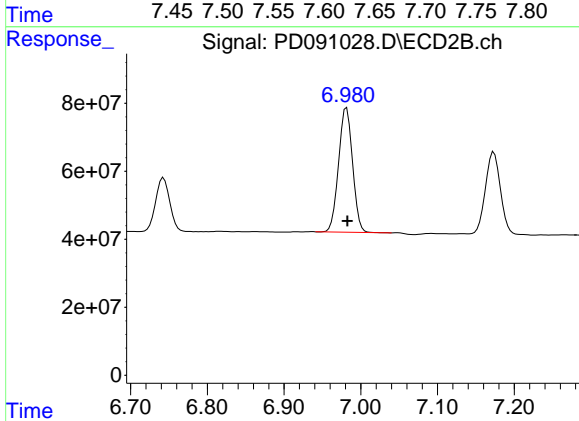
R.T.: 6.743 min  
 Delta R.T.: -0.002 min  
 Response: 201996362  
 Conc: 11.59 ng/ml



#21 Endrin ketone

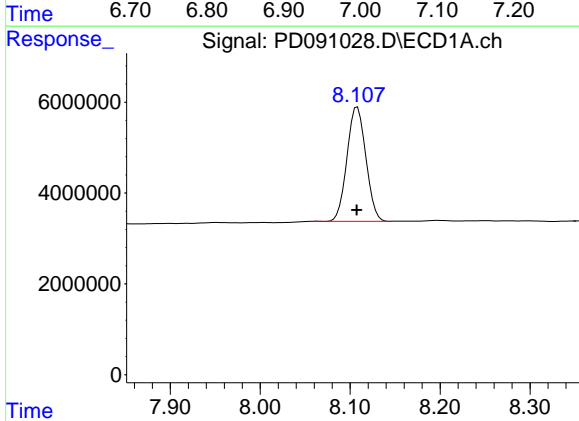
R.T.: 7.626 min  
 Delta R.T.: 0.001 min  
 Response: 49209304  
 Conc: 10.13 ng/ml

Instrument :  
 ECD\_D  
 ClientSampleId :



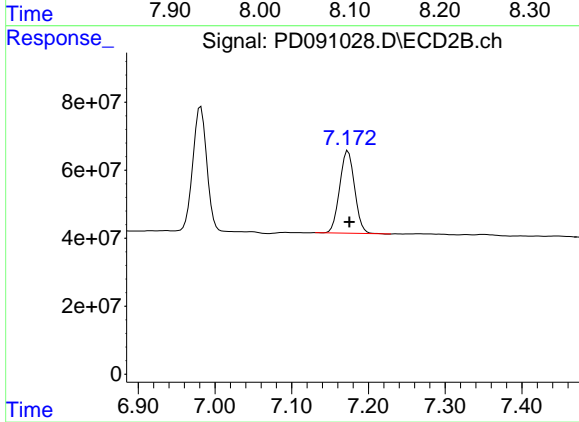
#21 Endrin ketone

R.T.: 6.981 min  
 Delta R.T.: -0.001 min  
 Response: 463771413  
 Conc: 12.30 ng/ml



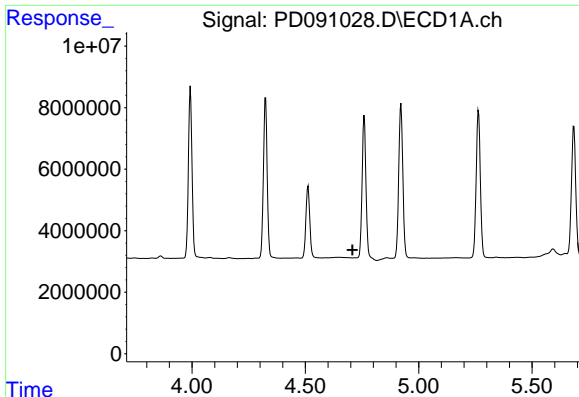
#22 Mirex

R.T.: 8.108 min  
 Delta R.T.: 0.000 min  
 Response: 36694315  
 Conc: 11.46 ng/ml



#22 Mirex

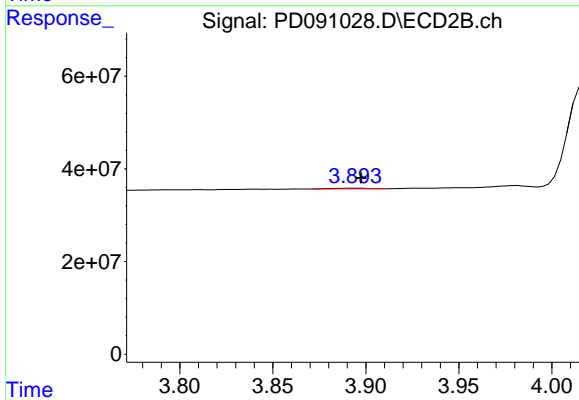
R.T.: 7.173 min  
 Delta R.T.: -0.002 min  
 Response: 328537540  
 Conc: 12.79 ng/ml



#23 Chlordane-1

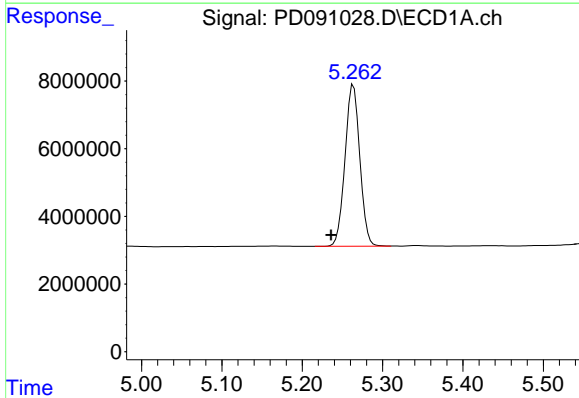
R.T.: 0.000 min  
 Exp R.T.: 4.709 min  
 Response: 0  
 Conc: N.D.

Instrument :  
 ECD\_D  
 ClientSampleId :



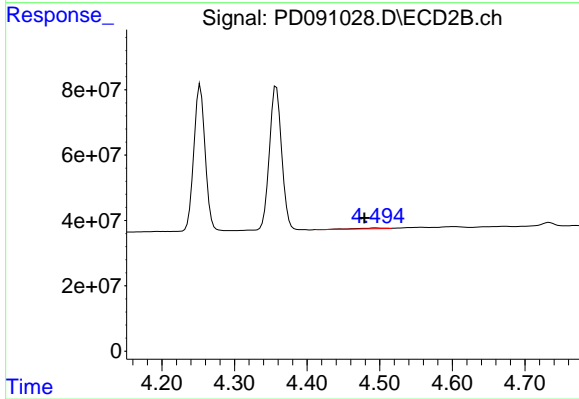
#23 Chlordane-1

R.T.: 3.895 min  
 Delta R.T.: -0.003 min  
 Response: 1754715  
 Conc: 1.41 ng/ml



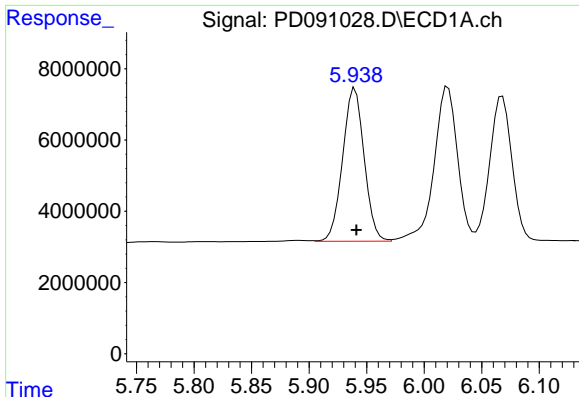
#24 Chlordane-2

R.T.: 5.264 min  
 Delta R.T.: 0.028 min  
 Response: 61244047  
 Conc: 317.11 ng/ml



#24 Chlordane-2

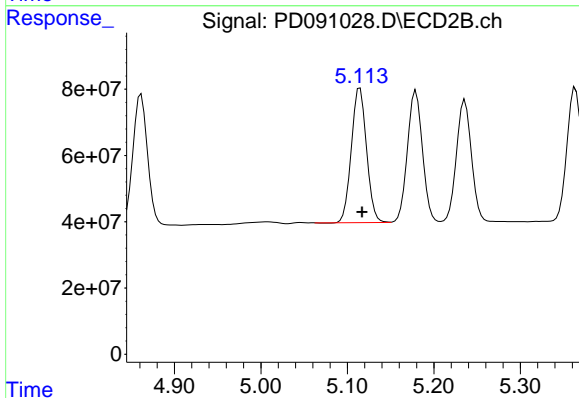
R.T.: 4.495 min  
 Delta R.T.: 0.016 min  
 Response: 7299194  
 Conc: 5.60 ng/ml



#25 Chlordane-3

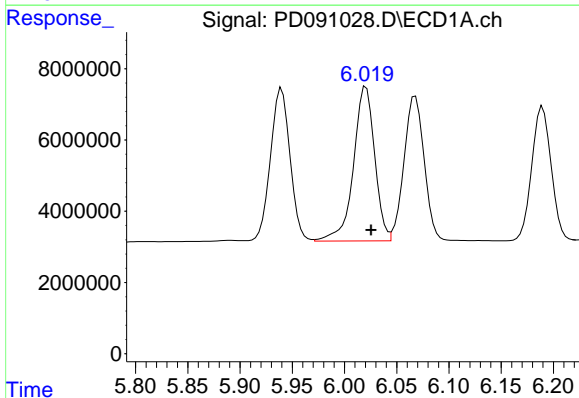
R.T.: 5.940 min  
 Delta R.T.: -0.001 min  
 Response: 56105656  
 Conc: 73.56 ng/ml

Instrument :  
 ECD\_D  
 ClientSampleId :



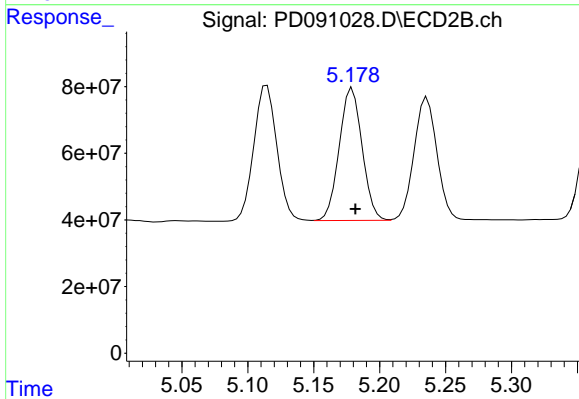
#25 Chlordane-3

R.T.: 5.114 min  
 Delta R.T.: -0.003 min  
 Response: 494024204  
 Conc: 126.95 ng/ml



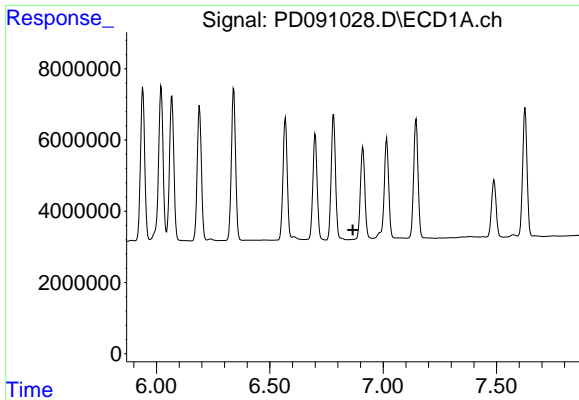
#26 Chlordane-4

R.T.: 6.021 min  
 Delta R.T.: -0.005 min  
 Response: 61263227  
 Conc: 63.23 ng/ml



#26 Chlordane-4

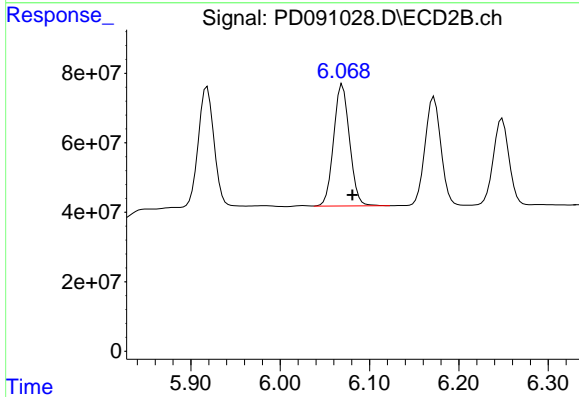
R.T.: 5.179 min  
 Delta R.T.: -0.002 min  
 Response: 479532927  
 Conc: 143.52 ng/ml



#27 Chlordane-5

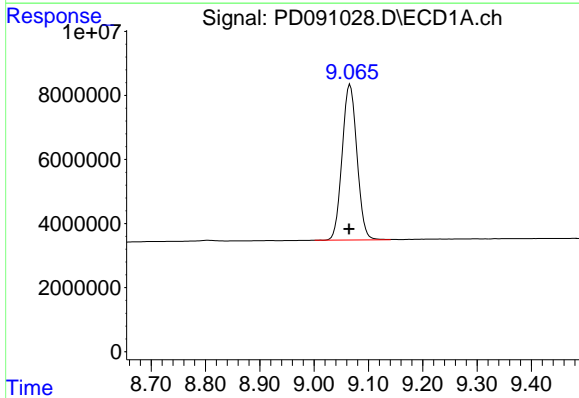
R.T.: 0.000 min  
 Exp R.T.: 6.866 min  
 Response: 0  
 Conc: N.D.

Instrument :  
 ECD\_D  
 ClientSampleId :



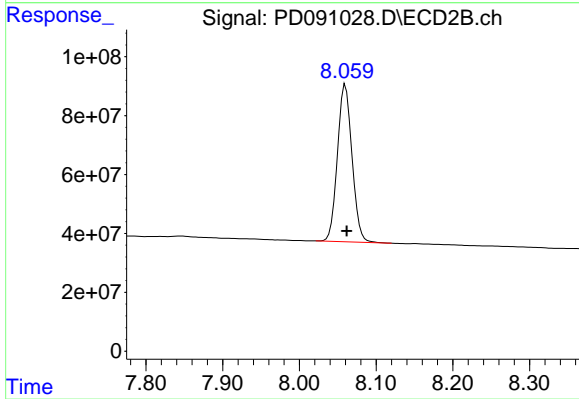
#27 Chlordane-5

R.T.: 6.070 min  
 Delta R.T.: -0.011 min  
 Response: 434726137  
 Conc: 294.52 ng/ml



#28 Decachlorobiphenyl

R.T.: 9.066 min  
 Delta R.T.: 0.002 min  
 Response: 92223201  
 Conc: 19.71 ng/ml



#28 Decachlorobiphenyl

R.T.: 8.060 min  
 Delta R.T.: -0.002 min  
 Response: 706292668  
 Conc: 23.32 ng/ml