

Data Path : Z:\pestpcbsrv\HPCHEM1\ECD_D\Data\PD110725\
 Data File : PD091029.D
 Signal(s) : Signal #1: ECD1A.ch Signal #2: ECD2B.ch
 Acq On : 07 Nov 2025 16:59
 Operator : AR\AJ
 Sample : PB170447BSD
 Misc :
 ALS Vial : 14 Sample Multiplier: 1

Instrument :
 ECD_D
 ClientSampleId :

Integration File signal 1: autoint1.e
 Integration File signal 2: autoint2.e
 Quant Time: Nov 10 10:59:18 2025
 Quant Method : Z:\pestpcbsrv\HPCHEM1\ECD_D\Method\PD101725.M
 Quant Title : GC Extractables
 QLast Update : Fri Oct 17 17:43:28 2025
 Response via : Initial Calibration
 Integrator: ChemStation

Volume Inj. : 1 µl
 Signal #1 Phase : ZB-MR2 Signal #2 Phase: ZB-MR2
 Signal #1 Info : 30M x 0.32mm x0.5 Signal #2 Info : 30M x 0.32mm x 0.25µm

	Compound	RT#1	RT#2	Resp#1	Resp#2	ng/ml	ng/ml

System Monitoring Compounds							
1)	SA Tetrachlo...	3.543	2.874	63316223	654.7E6	20.332	21.987
28)	SA Decachlor...	9.067	8.060	95482813	733.5E6	20.411	24.215
Target Compounds							
2)	A alpha-BHC	3.993	3.385	63808377	569.4E6	8.890	11.143 #
3)	MA gamma-BHC...	4.324	3.721	61928626	529.0E6	9.109	11.196
4)	MA Heptachlor	4.922	4.073	66309396	534.7E6	11.863	11.988
5)	MB Aldrin	5.263	4.358	62676794	529.2E6	9.573	11.426
6)	B beta-BHC	4.511	4.017	28277952	233.0E6	10.795	11.750
7)	B delta-BHC	4.759	4.254	57060178	493.5E6	8.439	10.343
8)	Heptachlo...	5.683	4.862	57584415	487.9E6	9.947	11.442
9)	A Endosulfan I	6.067	5.237	56116097	460.9E6	10.135	11.702
10)	B gamma-Chl...	5.939	5.115	57881897	509.1E6	9.759	11.326
11)	B alpha-Chl...	6.020	5.180	61321579	493.8E6	9.922	11.447
12)	B 4,4'-DDE	6.189	5.364	50242465	505.3E6	9.432	11.526
13)	MA Dieldrin	6.341	5.502	56900991	515.7E6	9.758	11.672
14)	MA Endrin	6.568	5.779	46361754	506.9E6	9.359	12.519 #
15)	B Endosulfa...	6.781	6.070	49328987	450.3E6	9.866	11.990
16)	A 4,4'-DDD	6.700	5.919	40545182	433.1E6	10.001	11.885
17)	MA 4,4'-DDT	7.016	6.173	41081965	407.3E6	9.994	11.612
18)	B Endrin al...	6.910	6.248	36278599	316.7E6	9.905	11.436
19)	B Endosulfa...	7.144	6.472	46312366	417.3E6	9.985	11.641
20)	A Methoxychlor	7.489	6.743	23484630	209.0E6	11.049	11.991
21)	B Endrin ke...	7.626	6.981	51228939	480.8E6	10.543	12.748
22)	Mirex	8.108	7.174	38558308	340.1E6	12.046	13.238
23)	Chlordane-1	0.000	3.898	0	271509	N.D.	0.218 #
24)	Chlordane-2	5.263f	4.469	62676794	1019614	324.532	0.782 #
25)	Chlordane-3	5.939	5.115	57881897	509.1E6	75.885	130.814 #
26)	Chlordane-4	6.020	5.180	61321579	493.8E6	63.291	147.782 #
27)	Chlordane-5	0.000	6.070	0	450.3E6	N.D.	305.057 #

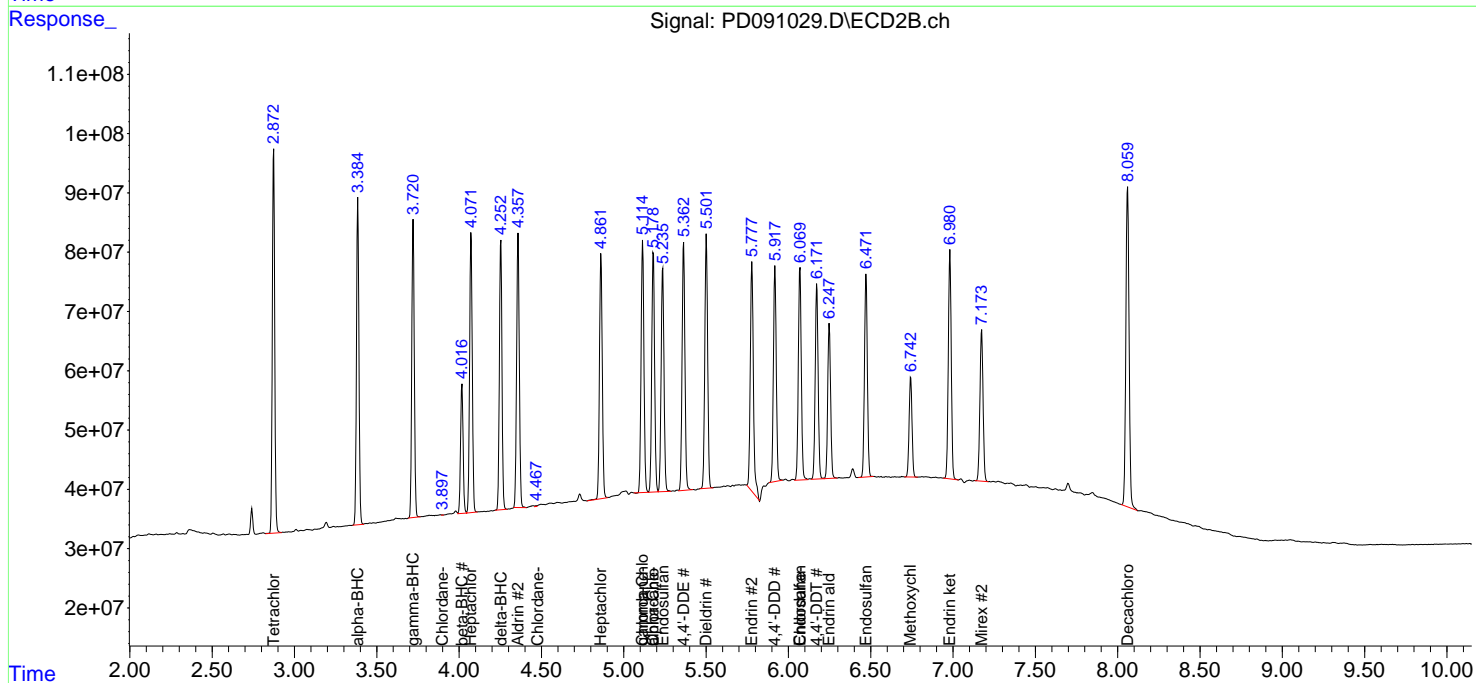
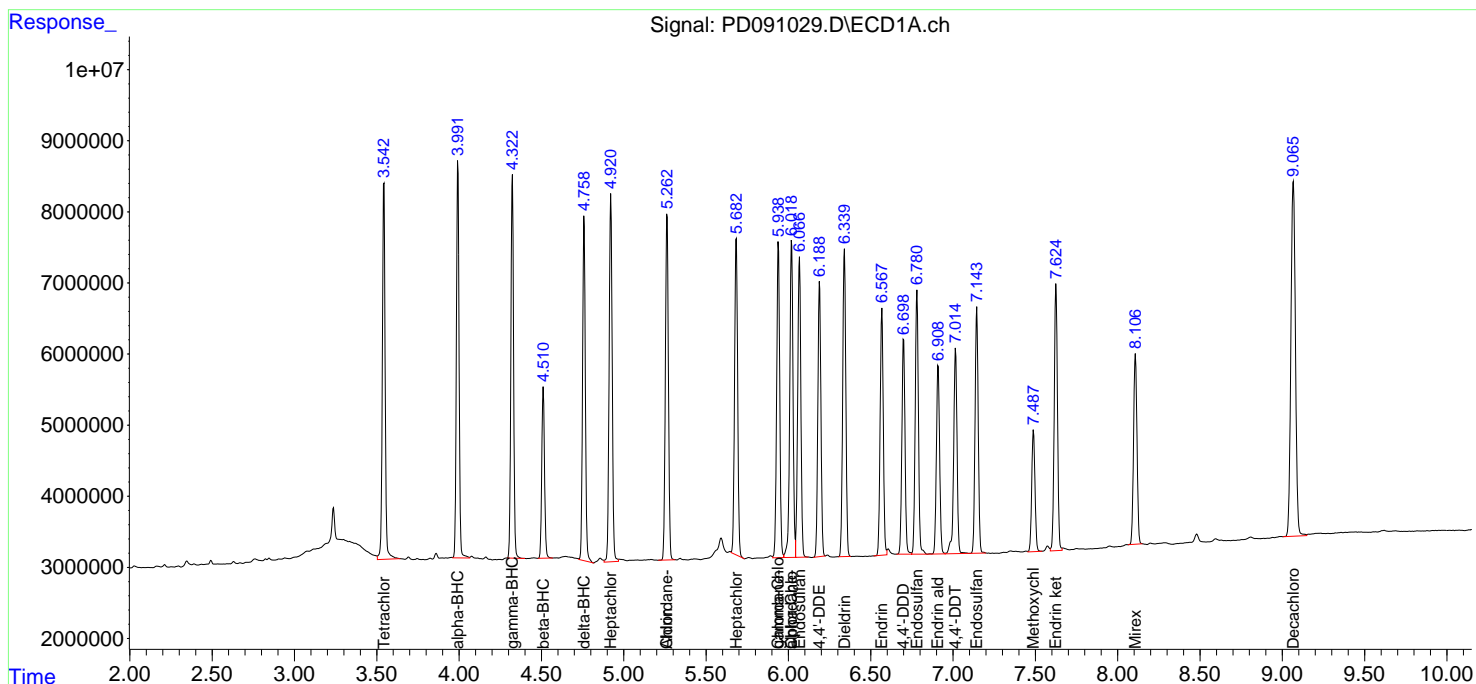
(f)=RT Delta > 1/2 Window (#)=Amounts differ by > 25% (m)=manual int.

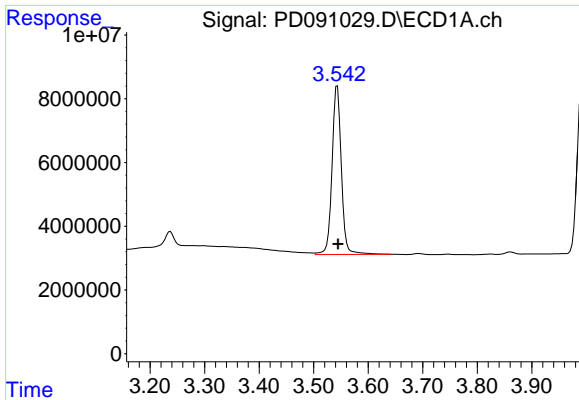
Data Path : Z:\pestpcbsrv\HPCHEM1\ECD_D\Data\PD110725\
 Data File : PD091029.D
 Signal(s) : Signal #1: ECD1A.ch Signal #2: ECD2B.ch
 Acq On : 07 Nov 2025 16:59
 Operator : AR\AJ
 Sample : PB170447BSD
 Misc :
 ALS Vial : 14 Sample Multiplier: 1

Instrument :
 ECD_D
 ClientSampleId :

Integration File signal 1: autoint1.e
 Integration File signal 2: autoint2.e
 Quant Time: Nov 10 10:59:18 2025
 Quant Method : Z:\pestpcbsrv\HPCHEM1\ECD_D\Method\PD101725.M
 Quant Title : GC Extractables
 QLast Update : Fri Oct 17 17:43:28 2025
 Response via : Initial Calibration
 Integrator: ChemStation

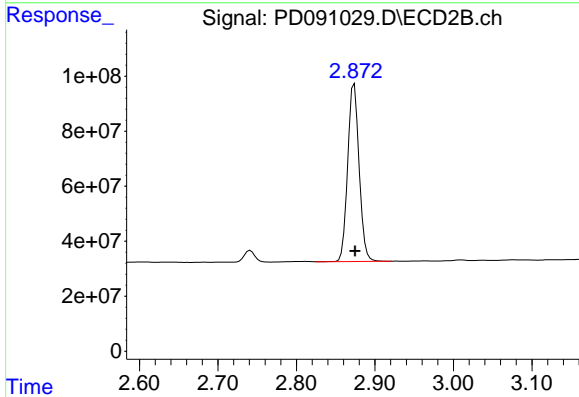
Volume Inj. : 1 µl
 Signal #1 Phase : ZB-MR1 Signal #2 Phase: ZB-MR2
 Signal #1 Info : 30M x 0.32mm x0.5 Signal #2 Info : 30M x 0.32mm x 0.25µm



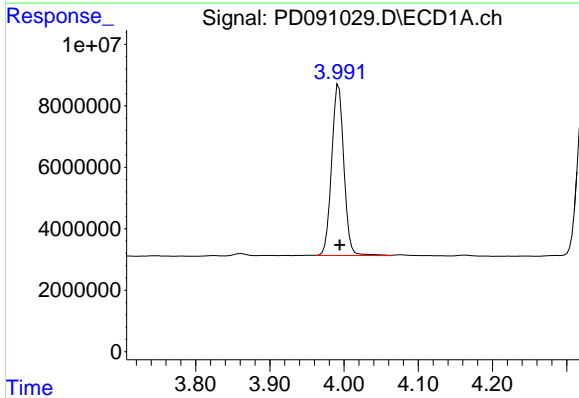


#1 Tetrachloro-m-xylene
 R.T.: 3.543 min
 Delta R.T.: -0.002 min
 Response: 63316223
 Conc: 20.33 ng/ml

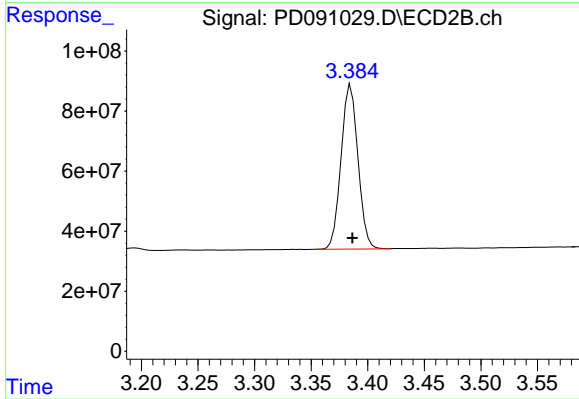
Instrument :
 ECD_D
 ClientSampleId :



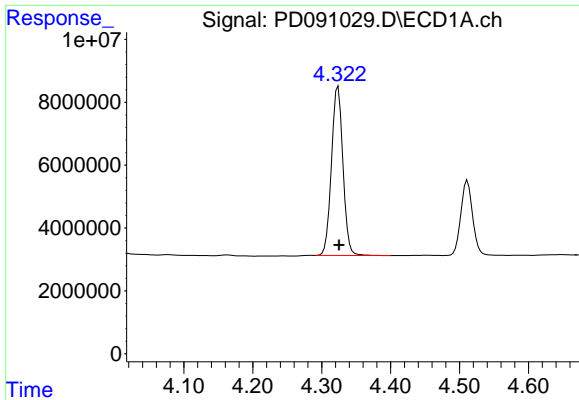
#1 Tetrachloro-m-xylene
 R.T.: 2.874 min
 Delta R.T.: -0.001 min
 Response: 654718763
 Conc: 21.99 ng/ml



#2 alpha-BHC
 R.T.: 3.993 min
 Delta R.T.: -0.001 min
 Response: 63808377
 Conc: 8.89 ng/ml

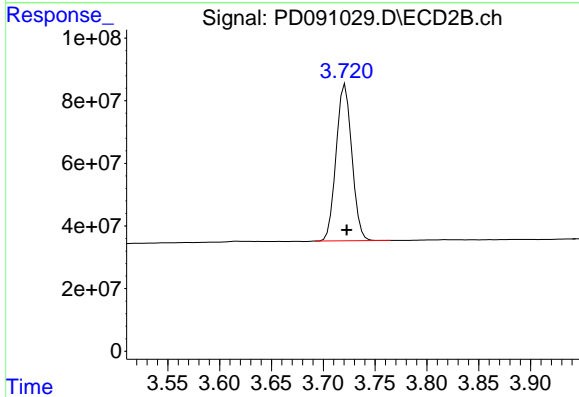


#2 alpha-BHC
 R.T.: 3.385 min
 Delta R.T.: -0.001 min
 Response: 569372387
 Conc: 11.14 ng/ml

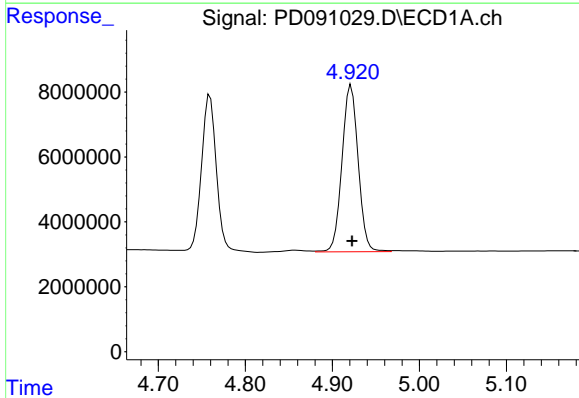


#3 gamma-BHC (Lindane)
 R.T.: 4.324 min
 Delta R.T.: -0.001 min
 Response: 61928626
 Conc: 9.11 ng/ml

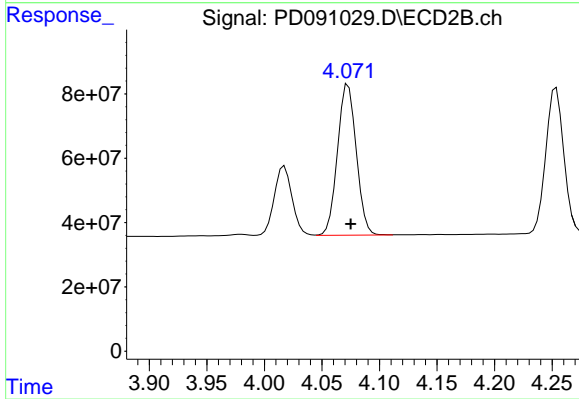
Instrument :
 ECD_D
 ClientSampleId :



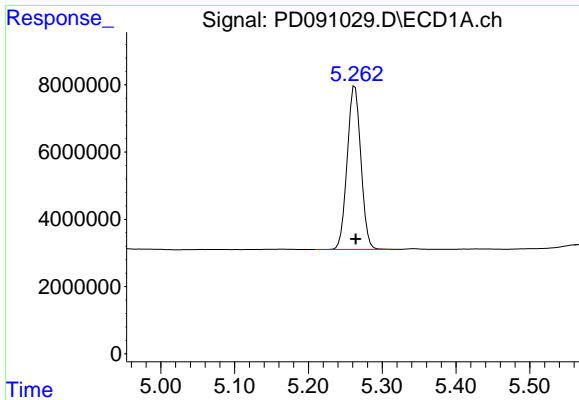
#3 gamma-BHC (Lindane)
 R.T.: 3.721 min
 Delta R.T.: -0.001 min
 Response: 528983097
 Conc: 11.20 ng/ml



#4 Heptachlor
 R.T.: 4.922 min
 Delta R.T.: -0.001 min
 Response: 66309396
 Conc: 11.86 ng/ml

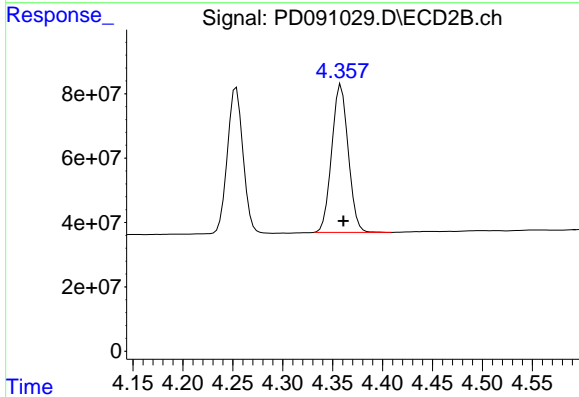


#4 Heptachlor
 R.T.: 4.073 min
 Delta R.T.: -0.002 min
 Response: 534692299
 Conc: 11.99 ng/ml

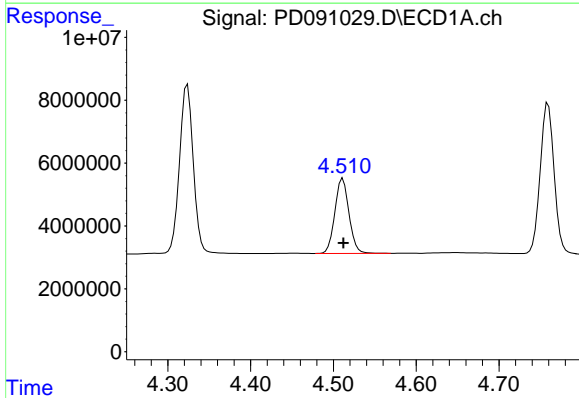


#5 Aldrin
 R.T.: 5.263 min
 Delta R.T.: -0.001 min
 Response: 62676794
 Conc: 9.57 ng/ml

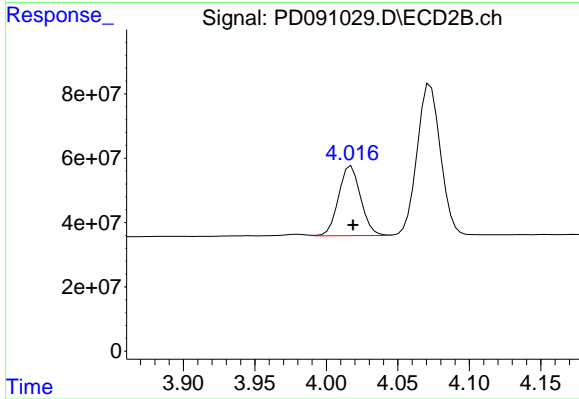
Instrument :
 ECD_D
 ClientSampleId :



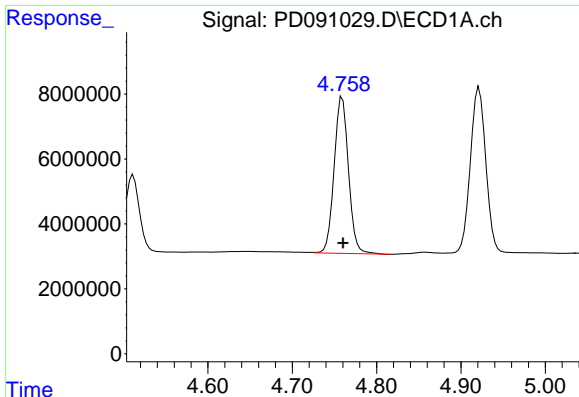
#5 Aldrin
 R.T.: 4.358 min
 Delta R.T.: -0.002 min
 Response: 529246821
 Conc: 11.43 ng/ml



#6 beta-BHC
 R.T.: 4.511 min
 Delta R.T.: 0.000 min
 Response: 28277952
 Conc: 10.79 ng/ml



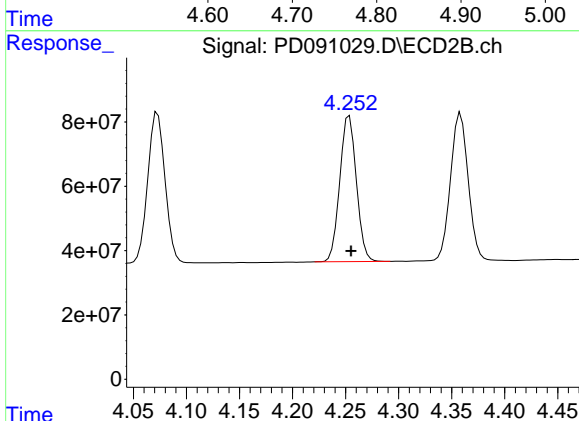
#6 beta-BHC
 R.T.: 4.017 min
 Delta R.T.: -0.001 min
 Response: 232989181
 Conc: 11.75 ng/ml



#7 delta-BHC

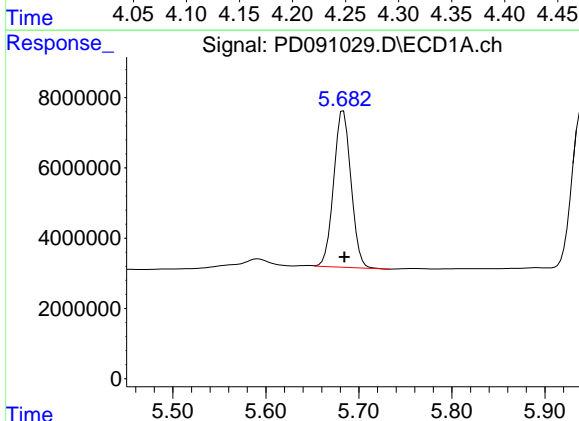
R.T.: 4.759 min
 Delta R.T.: 0.000 min
 Response: 57060178
 Conc: 8.44 ng/ml

Instrument :
 ECD_D
 ClientSampleId :



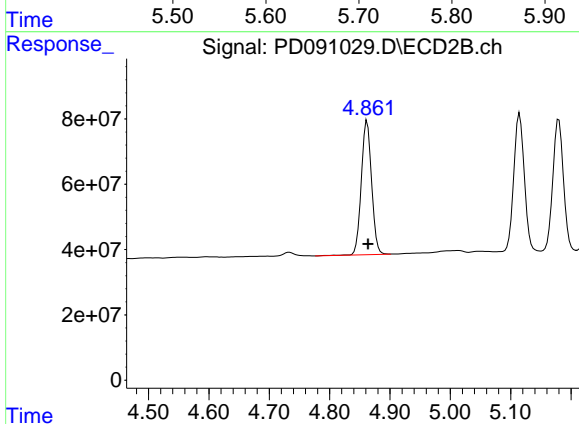
#7 delta-BHC

R.T.: 4.254 min
 Delta R.T.: -0.002 min
 Response: 493512386
 Conc: 10.34 ng/ml



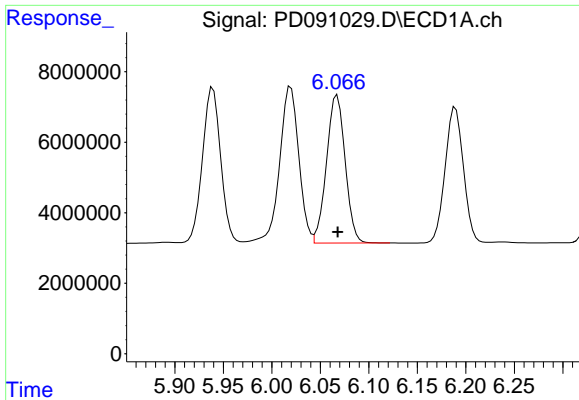
#8 Heptachlor epoxide

R.T.: 5.683 min
 Delta R.T.: 0.000 min
 Response: 57584415
 Conc: 9.95 ng/ml



#8 Heptachlor epoxide

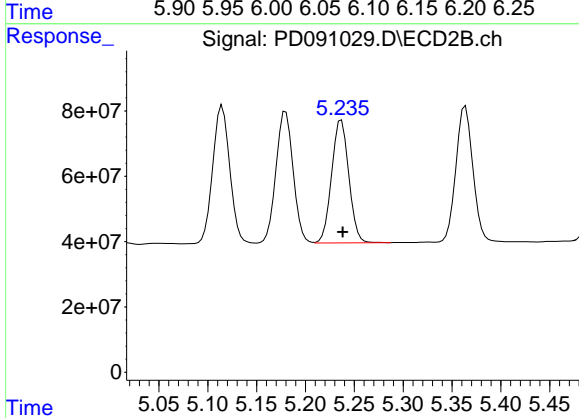
R.T.: 4.862 min
 Delta R.T.: -0.002 min
 Response: 487894592
 Conc: 11.44 ng/ml



#9 Endosulfan I

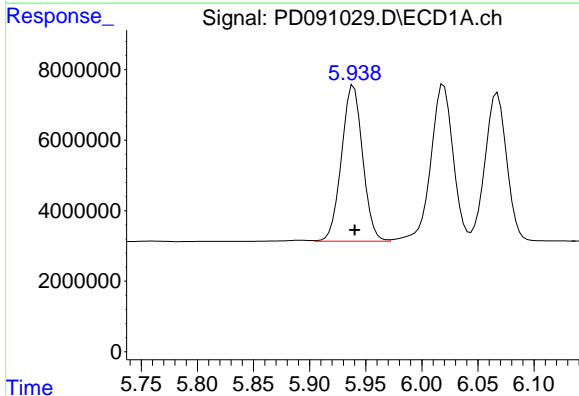
R.T.: 6.067 min
 Delta R.T.: 0.000 min
 Response: 56116097
 Conc: 10.14 ng/ml

Instrument :
 ECD_D
 ClientSampleId :



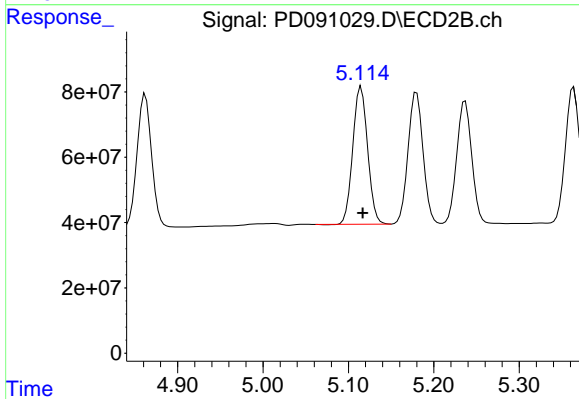
#9 Endosulfan I

R.T.: 5.237 min
 Delta R.T.: -0.001 min
 Response: 460932538
 Conc: 11.70 ng/ml



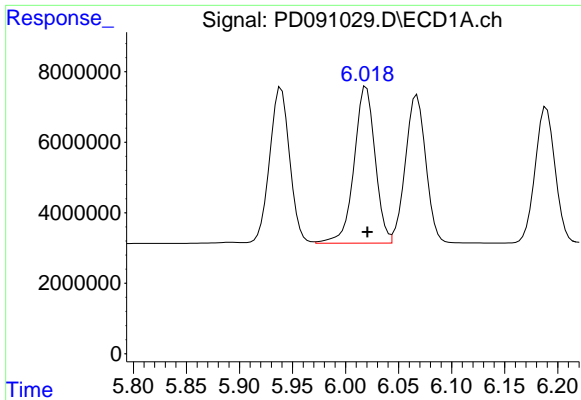
#10 gamma-Chlordane

R.T.: 5.939 min
 Delta R.T.: 0.000 min
 Response: 57881897
 Conc: 9.76 ng/ml



#10 gamma-Chlordane

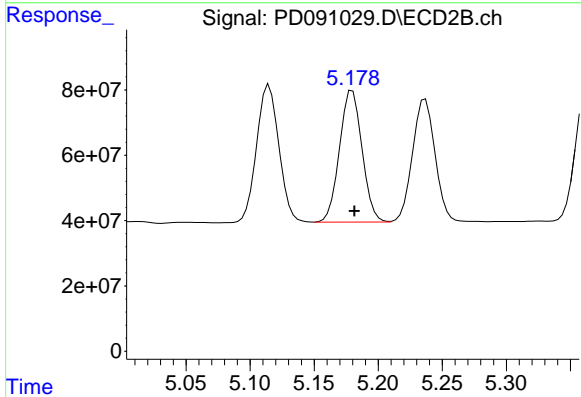
R.T.: 5.115 min
 Delta R.T.: -0.002 min
 Response: 509071631
 Conc: 11.33 ng/ml



#11 alpha-Chlordane

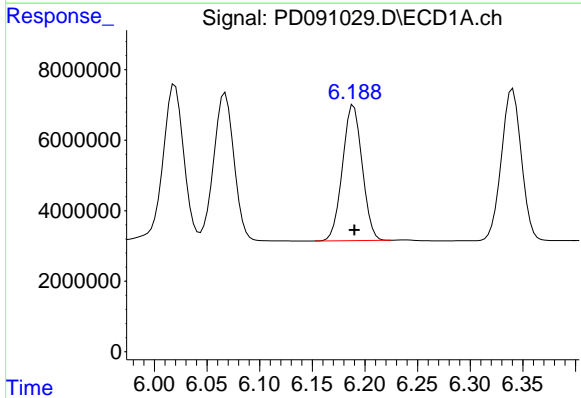
R.T.: 6.020 min
 Delta R.T.: 0.000 min
 Response: 61321579
 Conc: 9.92 ng/ml

Instrument :
 ECD_D
 ClientSampleId :



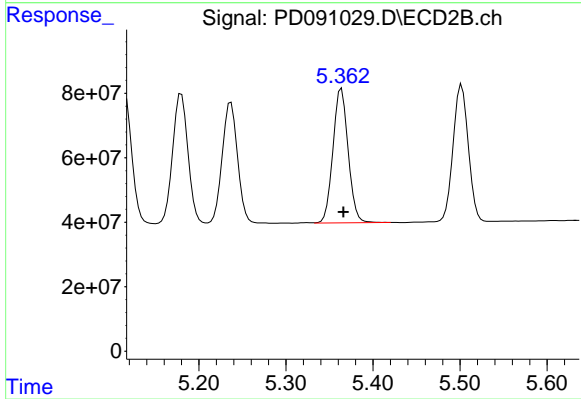
#11 alpha-Chlordane

R.T.: 5.180 min
 Delta R.T.: -0.002 min
 Response: 493775966
 Conc: 11.45 ng/ml



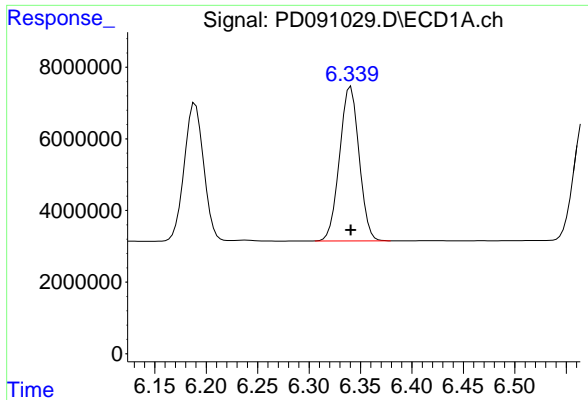
#12 4,4'-DDE

R.T.: 6.189 min
 Delta R.T.: 0.000 min
 Response: 50242465
 Conc: 9.43 ng/ml



#12 4,4'-DDE

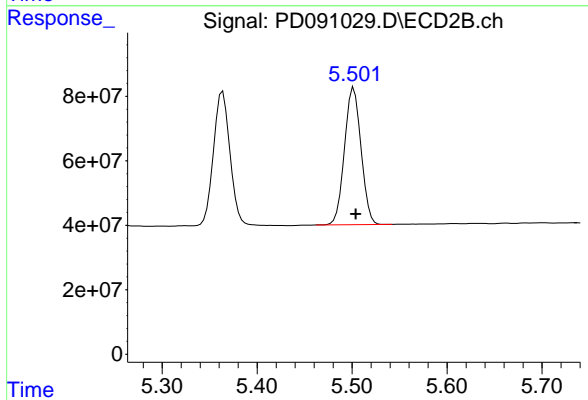
R.T.: 5.364 min
 Delta R.T.: -0.002 min
 Response: 505278002
 Conc: 11.53 ng/ml



#13 Dieldrin

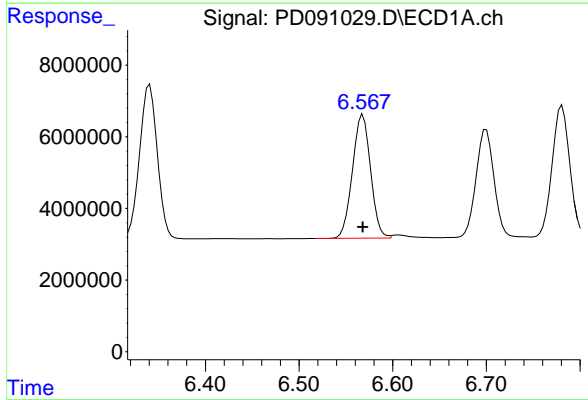
R.T.: 6.341 min
 Delta R.T.: 0.000 min
 Response: 56900991
 Conc: 9.76 ng/ml

Instrument :
 ECD_D
 ClientSampleId :



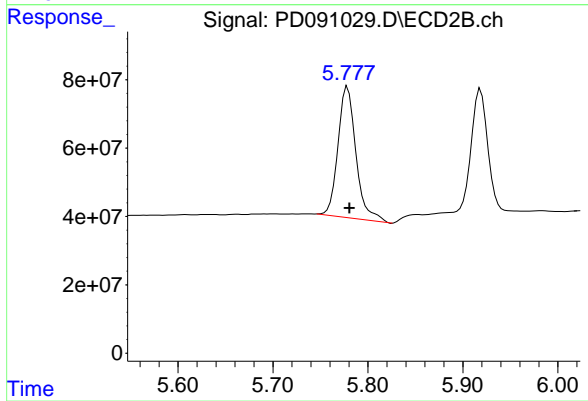
#13 Dieldrin

R.T.: 5.502 min
 Delta R.T.: -0.002 min
 Response: 515723773
 Conc: 11.67 ng/ml



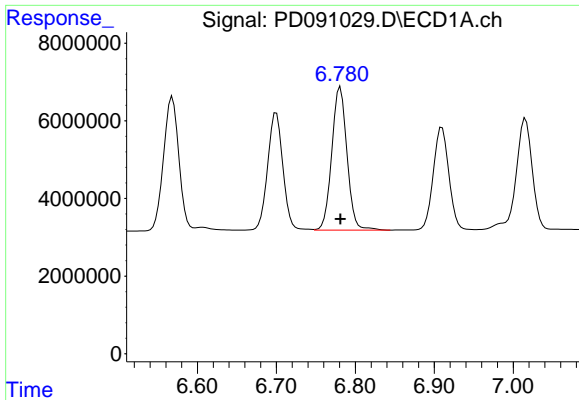
#14 Endrin

R.T.: 6.568 min
 Delta R.T.: 0.000 min
 Response: 46361754
 Conc: 9.36 ng/ml



#14 Endrin

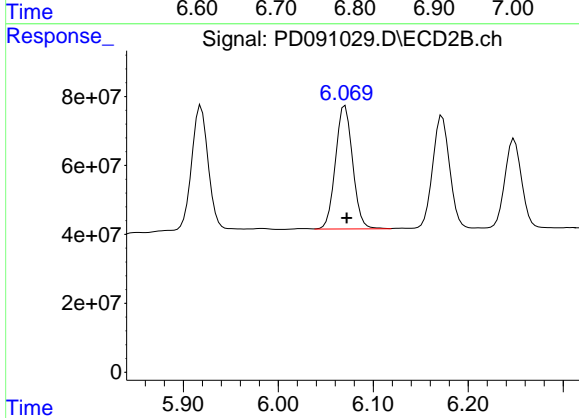
R.T.: 5.779 min
 Delta R.T.: -0.002 min
 Response: 506946399
 Conc: 12.52 ng/ml



#15 Endosulfan II

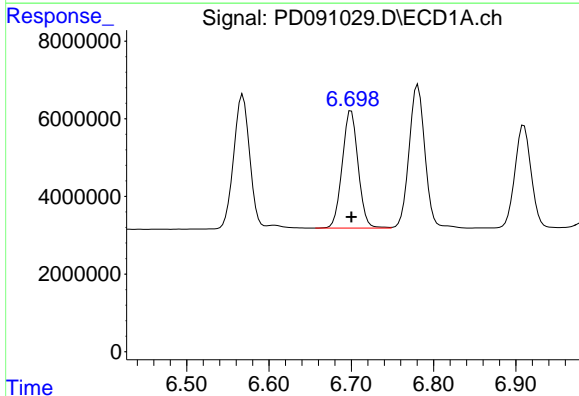
R.T.: 6.781 min
 Delta R.T.: 0.000 min
 Response: 49328987
 Conc: 9.87 ng/ml

Instrument :
 ECD_D
 ClientSampleId :



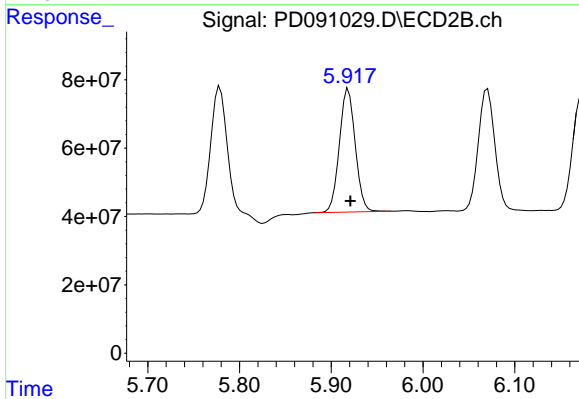
#15 Endosulfan II

R.T.: 6.070 min
 Delta R.T.: -0.002 min
 Response: 450274444
 Conc: 11.99 ng/ml



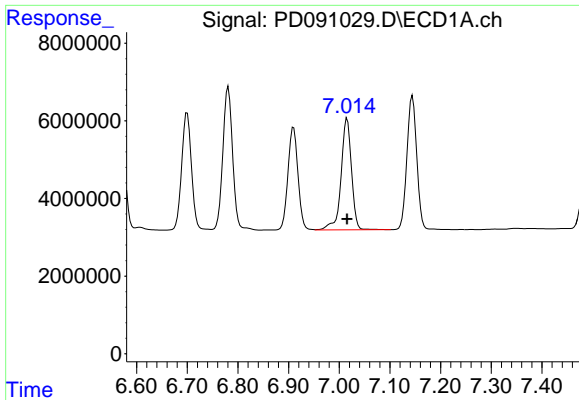
#16 4,4'-DDD

R.T.: 6.700 min
 Delta R.T.: 0.000 min
 Response: 40545182
 Conc: 10.00 ng/ml



#16 4,4'-DDD

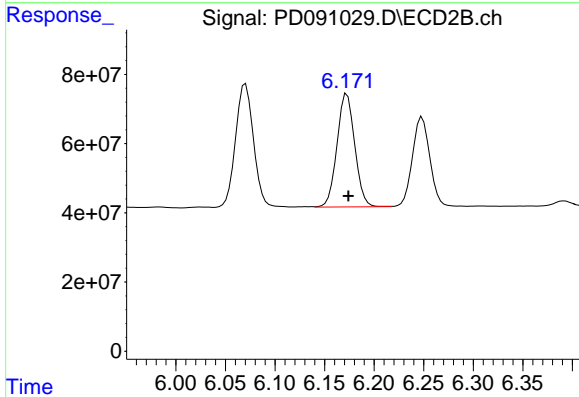
R.T.: 5.919 min
 Delta R.T.: -0.002 min
 Response: 433069216
 Conc: 11.89 ng/ml



#17 4,4'-DDT

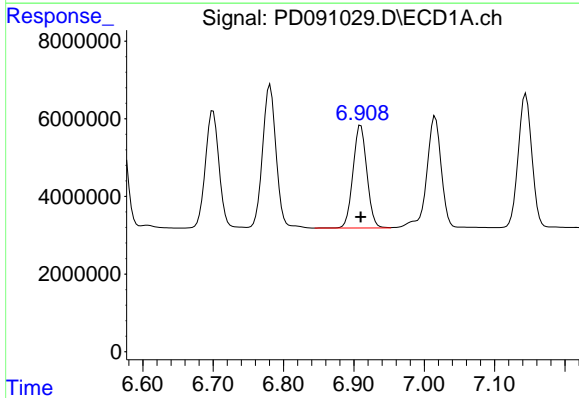
R.T.: 7.016 min
 Delta R.T.: 0.000 min
 Response: 41081965
 Conc: 9.99 ng/ml

Instrument :
 ECD_D
 ClientSampleId :



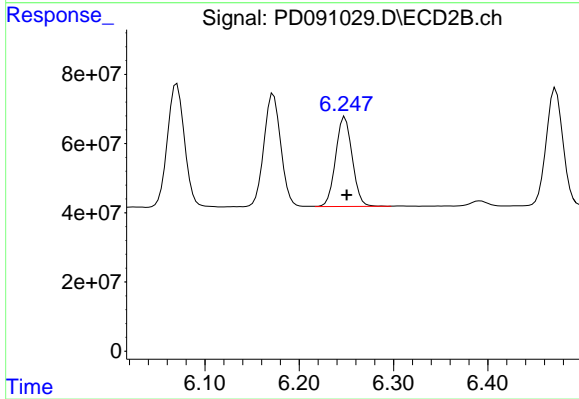
#17 4,4'-DDT

R.T.: 6.173 min
 Delta R.T.: -0.001 min
 Response: 407281563
 Conc: 11.61 ng/ml



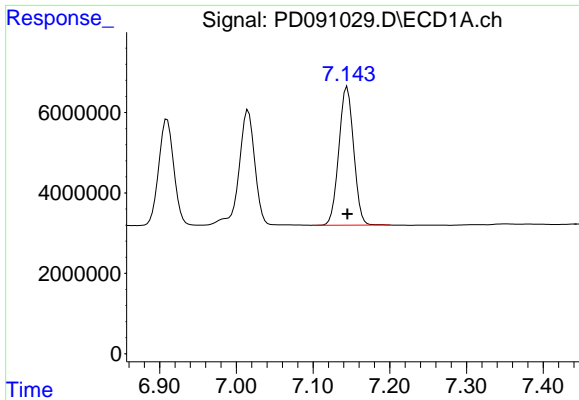
#18 Endrin aldehyde

R.T.: 6.910 min
 Delta R.T.: 0.000 min
 Response: 36278599
 Conc: 9.90 ng/ml



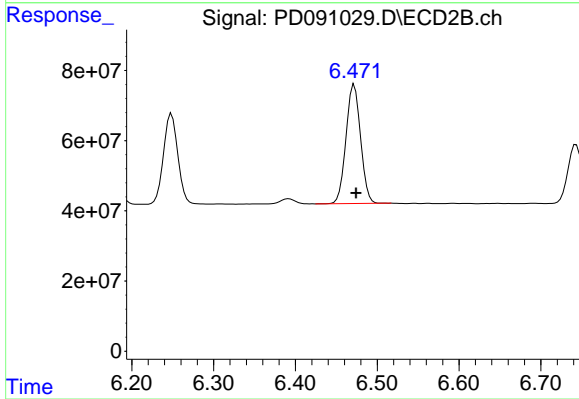
#18 Endrin aldehyde

R.T.: 6.248 min
 Delta R.T.: -0.002 min
 Response: 316682524
 Conc: 11.44 ng/ml

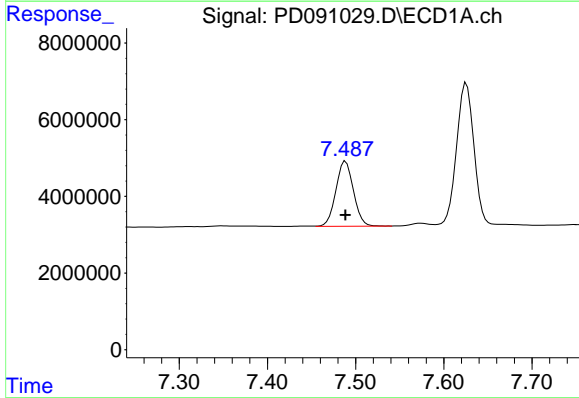


#19 Endosulfan Sulfate
 R.T.: 7.144 min
 Delta R.T.: 0.000 min
 Response: 46312366
 Conc: 9.99 ng/ml

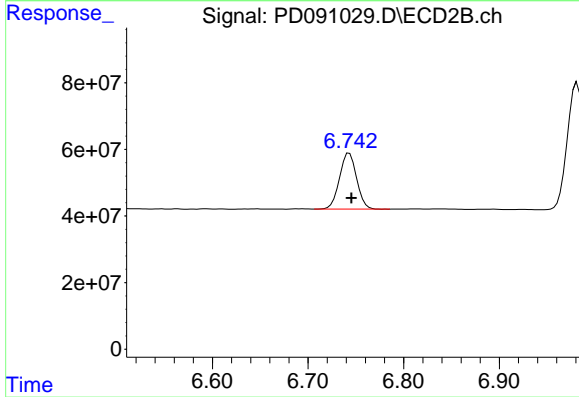
Instrument :
 ECD_D
 ClientSampleId :



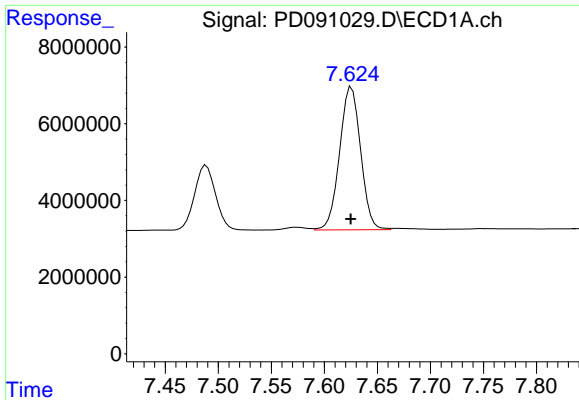
#19 Endosulfan Sulfate
 R.T.: 6.472 min
 Delta R.T.: -0.002 min
 Response: 417269304
 Conc: 11.64 ng/ml



#20 Methoxychlor
 R.T.: 7.489 min
 Delta R.T.: 0.000 min
 Response: 23484630
 Conc: 11.05 ng/ml



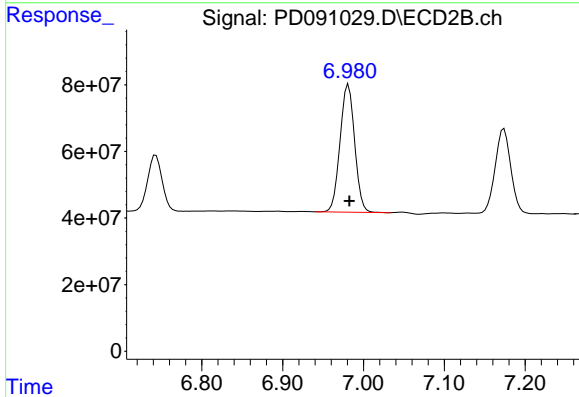
#20 Methoxychlor
 R.T.: 6.743 min
 Delta R.T.: -0.002 min
 Response: 208974680
 Conc: 11.99 ng/ml



#21 Endrin ketone

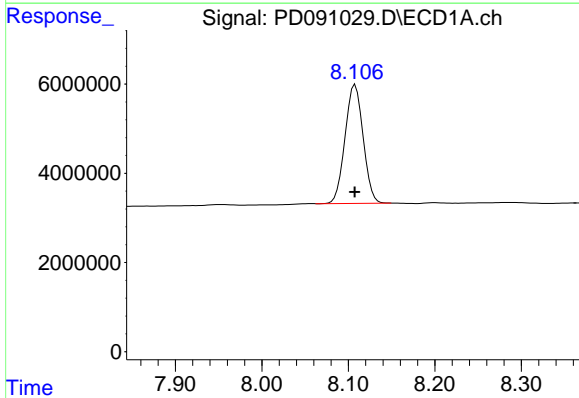
R.T.: 7.626 min
 Delta R.T.: 0.000 min
 Response: 51228939
 Conc: 10.54 ng/ml

Instrument :
 ECD_D
 ClientSampleId :



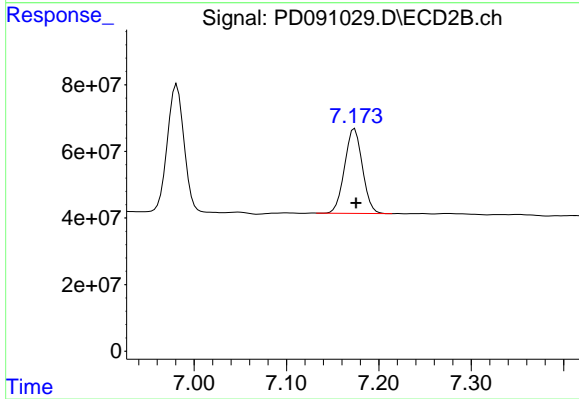
#21 Endrin ketone

R.T.: 6.981 min
 Delta R.T.: -0.001 min
 Response: 480824122
 Conc: 12.75 ng/ml



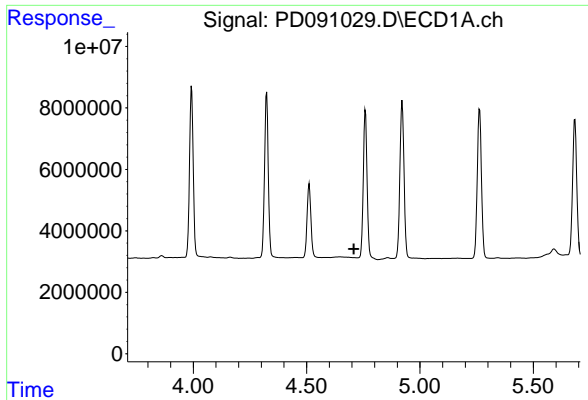
#22 Mirex

R.T.: 8.108 min
 Delta R.T.: 0.000 min
 Response: 38558308
 Conc: 12.05 ng/ml



#22 Mirex

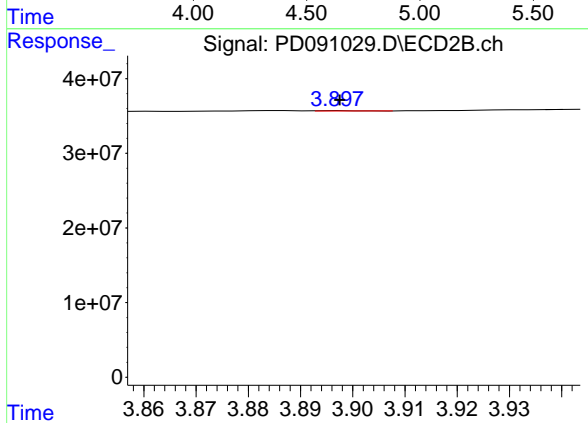
R.T.: 7.174 min
 Delta R.T.: -0.001 min
 Response: 340085689
 Conc: 13.24 ng/ml



#23 Chlordane-1

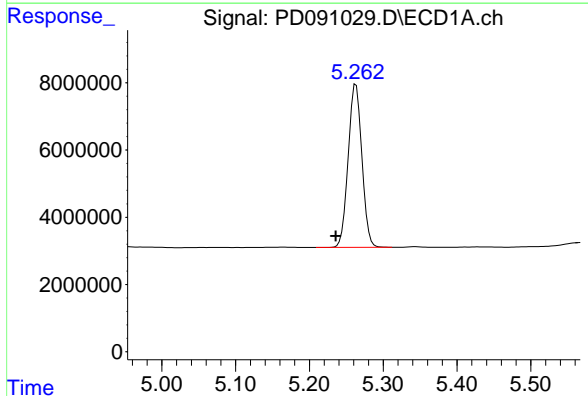
R.T.: 0.000 min
 Exp R.T.: 4.709 min
 Response: 0
 Conc: N.D.

Instrument :
 ECD_D
 ClientSampleId :



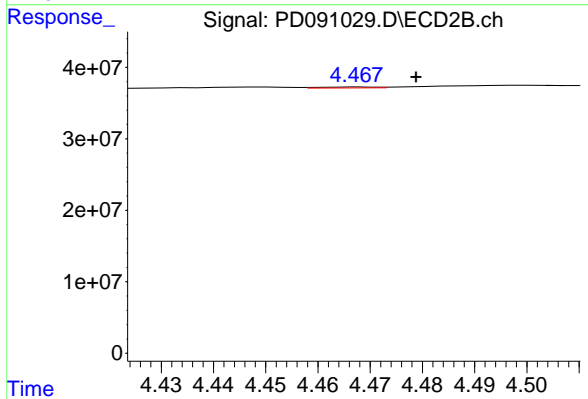
#23 Chlordane-1

R.T.: 3.898 min
 Delta R.T.: 0.000 min
 Response: 271509
 Conc: 0.22 ng/ml



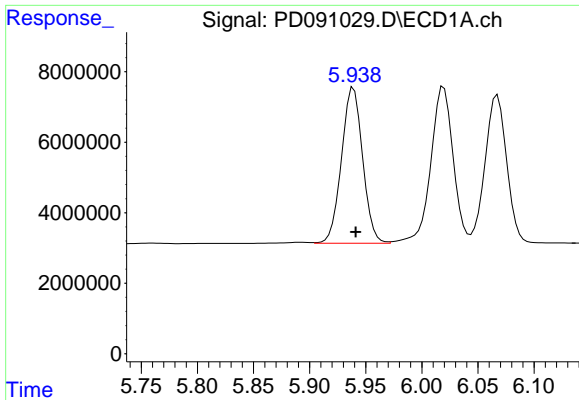
#24 Chlordane-2

R.T.: 5.263 min
 Delta R.T.: 0.027 min
 Response: 62676794
 Conc: 324.53 ng/ml



#24 Chlordane-2

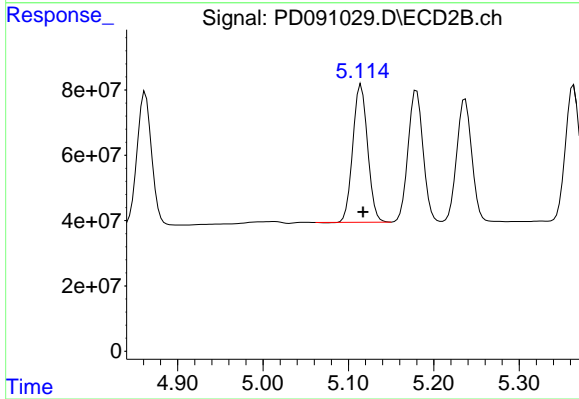
R.T.: 4.469 min
 Delta R.T.: -0.010 min
 Response: 1019614
 Conc: 0.78 ng/ml



#25 Chlordane-3

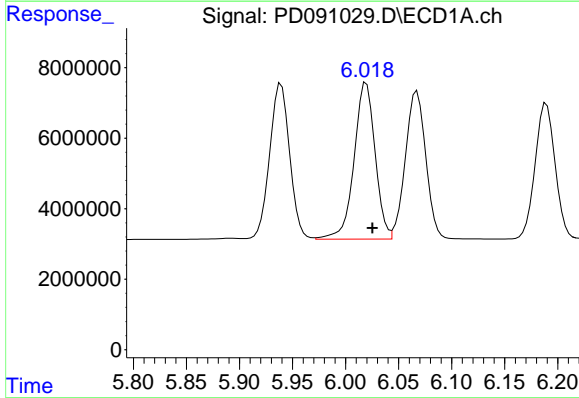
R.T.: 5.939 min
 Delta R.T.: -0.002 min
 Response: 57881897
 Conc: 75.88 ng/ml

Instrument :
 ECD_D
 ClientSampleId :



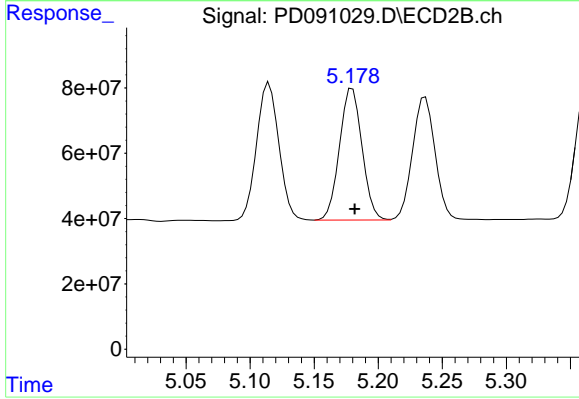
#25 Chlordane-3

R.T.: 5.115 min
 Delta R.T.: -0.002 min
 Response: 509071631
 Conc: 130.81 ng/ml



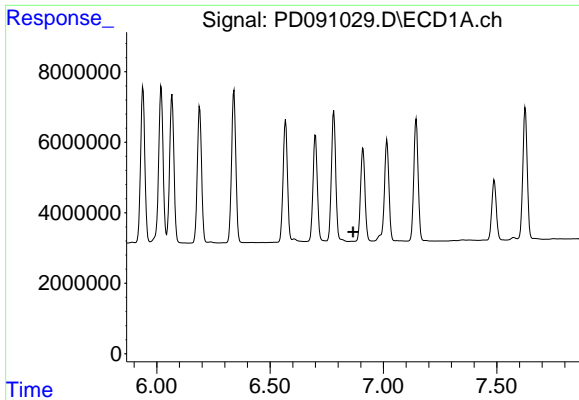
#26 Chlordane-4

R.T.: 6.020 min
 Delta R.T.: -0.006 min
 Response: 61321579
 Conc: 63.29 ng/ml



#26 Chlordane-4

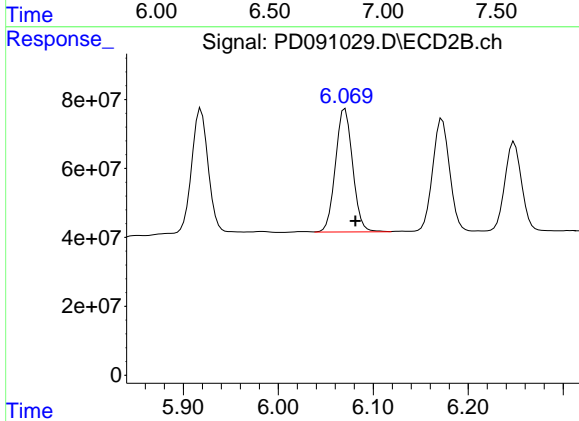
R.T.: 5.180 min
 Delta R.T.: -0.002 min
 Response: 493775966
 Conc: 147.78 ng/ml



#27 Chlordane-5

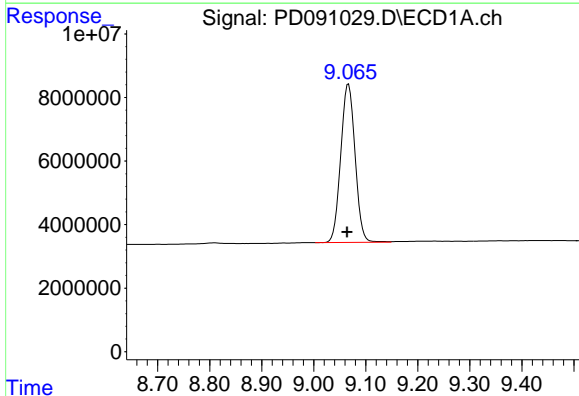
R.T.: 0.000 min
 Exp R.T.: 6.866 min
 Response: 0
 Conc: N.D.

Instrument :
 ECD_D
 ClientSampleId :



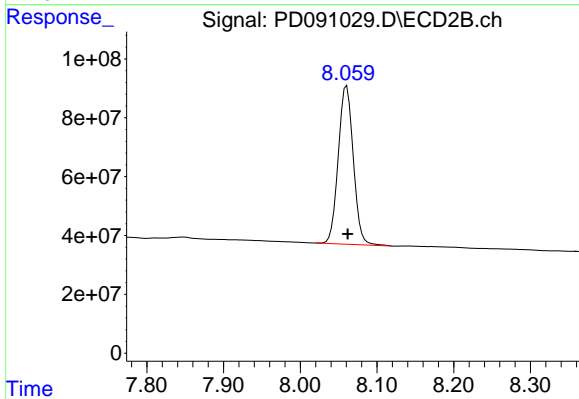
#27 Chlordane-5

R.T.: 6.070 min
 Delta R.T.: -0.011 min
 Response: 450274444
 Conc: 305.06 ng/ml



#28 Decachlorobiphenyl

R.T.: 9.067 min
 Delta R.T.: 0.003 min
 Response: 95482813
 Conc: 20.41 ng/ml



#28 Decachlorobiphenyl

R.T.: 8.060 min
 Delta R.T.: -0.001 min
 Response: 733507960
 Conc: 24.22 ng/ml