

Data Path : Z:\pestpcbsrv\HPCHEM1\ECD_D\Data\PD110725\
 Data File : PD091031.D
 Signal(s) : Signal #1: ECD1A.ch Signal #2: ECD2B.ch
 Acq On : 07 Nov 2025 17:26
 Operator : AR\AJ
 Sample : I.BLK
 Misc :
 ALS Vial : 2 Sample Multiplier: 1

Instrument :
 ECD_D
 ClientSampleId :

Integration File signal 1: autoint1.e
 Integration File signal 2: autoint2.e
 Quant Time: Nov 10 11:00:09 2025
 Quant Method : Z:\pestpcbsrv\HPCHEM1\ECD_D\Method\PD101725.M
 Quant Title : GC Extractables
 QLast Update : Fri Oct 17 17:43:28 2025
 Response via : Initial Calibration
 Integrator: ChemStation

Volume Inj. : 1 µl
 Signal #1 Phase : ZB-MR2 Signal #2 Phase: ZB-MR2
 Signal #1 Info : 30M x 0.32mm x0.5 Signal #2 Info : 30M x 0.32mm x 0.25µm

Compound	RT#1	RT#2	Resp#1	Resp#2	ng/ml	ng/ml
System Monitoring Compounds						
1) SA Tetrachlo...	3.544	2.874	67695730	638.1E6	21.738	21.428
28) SA Decachlor...	9.066	8.060	87613539	623.4E6	18.729	20.580
Target Compounds						
2) A alpha-BHC	0.000	3.379	0	14757141	N.D.	0.289 #
4) MA Heptachlor	4.936	0.000	5658488	0	1.012	N.D. #
6) B beta-BHC	4.511	4.021	-1576989	86947947	N.D.	4.385
7) B delta-BHC	4.774	4.258	13691942	18816444	2.025	0.394 #
8) B Heptachlo...	5.679	4.859	-1844958	47737525	N.D.	1.120
9) A Endosulfan I	0.000	5.218f	0	17465844	N.D.	0.443 #
10) B gamma-Chl...	5.971f	0.000	5421121	0	0.914	N.D. #
11) B alpha-Chl...	0.000	5.165f	0	79960807	N.D.	1.854 #
12) B 4,4'-DDE	0.000	5.368	0	36140868	N.D.	0.824 #
13) MA Dieldrin	6.323f	0.000	150873	0	0.026	N.D. #
14) MA Endrin	6.572	5.785	2190837	101.6E6	0.442	2.509 #
16) A 4,4'-DDD	6.709	0.000	20907019	0	5.157	N.D. #
18) B Endrin al...	6.908	6.258	1149461	7494599	0.314	0.271
19) B Endosulfa...	0.000	6.466	0	6912814	N.D.	0.193 #
20) A Methoxychlor	7.502	6.748	3710238	-3411051	1.746	N.D. #
21) B Endrin ke...	7.639	0.000	149.9E6	0	30.851	N.D. #
22) Mirex	8.108	7.173	2962355	35228815	0.925	1.371 #
23) Chlordane-1	0.000	3.889	0	3639027	N.D.	2.920 #
24) Chlordane-2	5.232	4.480	-141507	44519259	N.D.	34.127
26) Chlordane-4	0.000	5.165	0	79960807	N.D.	23.931 #
27) Chlordane-5	6.865	6.093	3330866	-2973273	22.168	N.D. #

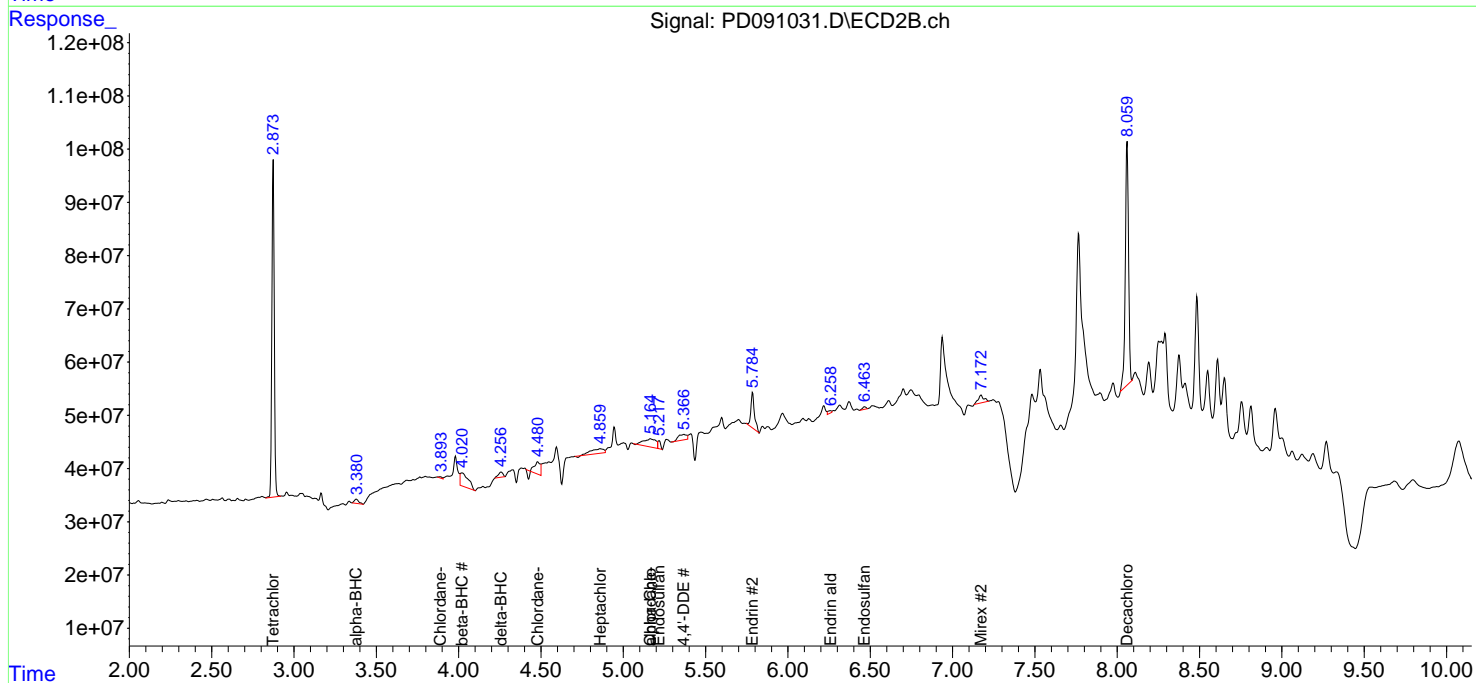
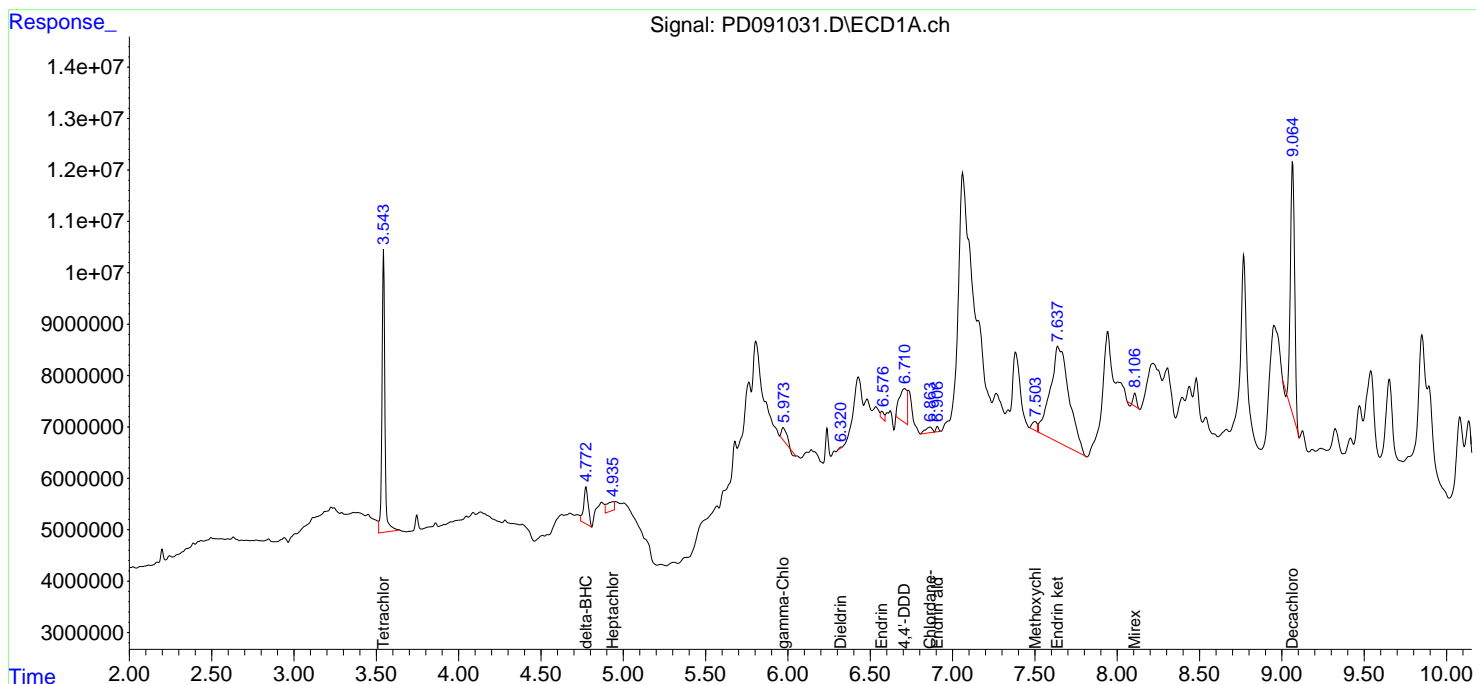
(f)=RT Delta > 1/2 Window (#)=Amounts differ by > 25% (m)=manual int.

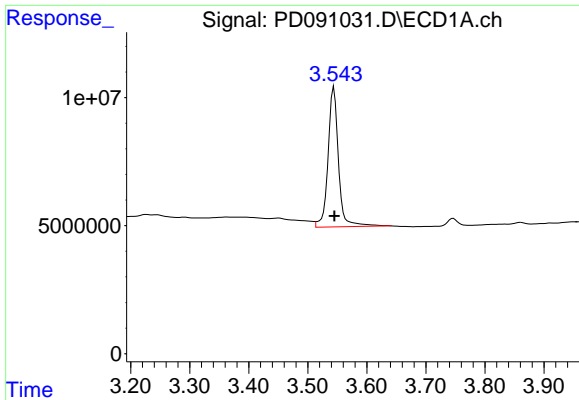
Data Path : Z:\pestpcbsrv\HPCHEM1\ECD_D\Data\PD110725\
 Data File : PD091031.D
 Signal(s) : Signal #1: ECD1A.ch Signal #2: ECD2B.ch
 Acq On : 07 Nov 2025 17:26
 Operator : AR\AJ
 Sample : I.BLK
 Misc :
 ALS Vial : 2 Sample Multiplier: 1

Instrument :
 ECD_D
 ClientSampleId :

Integration File signal 1: autoint1.e
 Integration File signal 2: autoint2.e
 Quant Time: Nov 10 11:00:09 2025
 Quant Method : Z:\pestpcbsrv\HPCHEM1\ECD_D\Method\PD101725.M
 Quant Title : GC Extractables
 QLast Update : Fri Oct 17 17:43:28 2025
 Response via : Initial Calibration
 Integrator: ChemStation

Volume Inj. : 1 µl
 Signal #1 Phase : ZB-MR1 Signal #2 Phase: ZB-MR2
 Signal #1 Info : 30M x 0.32mm x 0.5 Signal #2 Info : 30M x 0.32mm x 0.25µm

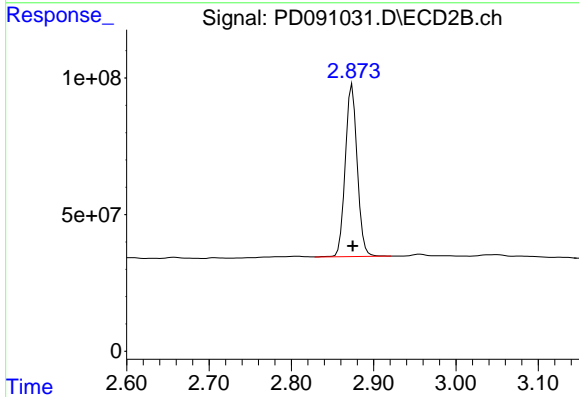




#1 Tetrachloro-m-xylene

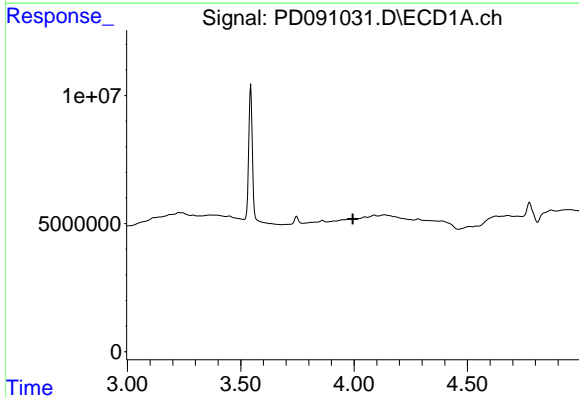
R.T.: 3.544 min
 Delta R.T.: 0.000 min
 Response: 67695730
 Conc: 21.74 ng/ml

Instrument :
 ECD_D
 ClientSampleId :



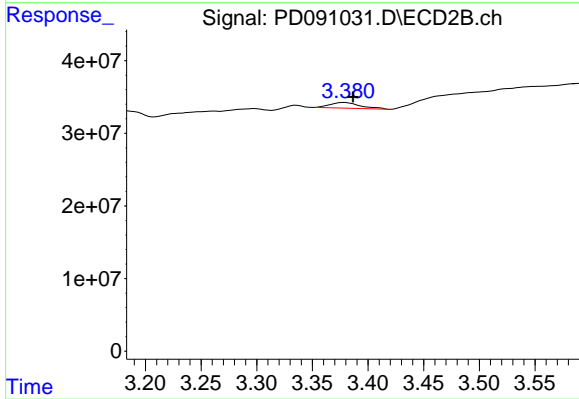
#1 Tetrachloro-m-xylene

R.T.: 2.874 min
 Delta R.T.: 0.000 min
 Response: 638056011
 Conc: 21.43 ng/ml



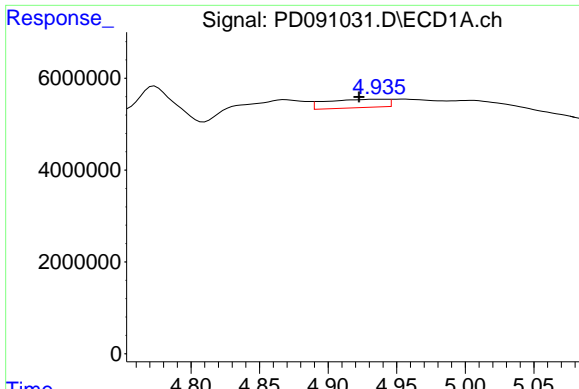
#2 alpha-BHC

R.T.: 0.000 min
 Exp R.T. : 3.994 min
 Response: 0
 Conc: N.D.



#2 alpha-BHC

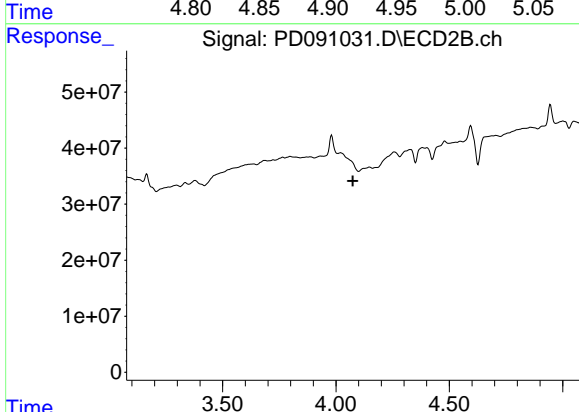
R.T.: 3.379 min
 Delta R.T.: -0.008 min
 Response: 14757141
 Conc: 0.29 ng/ml



#4 Heptachlor

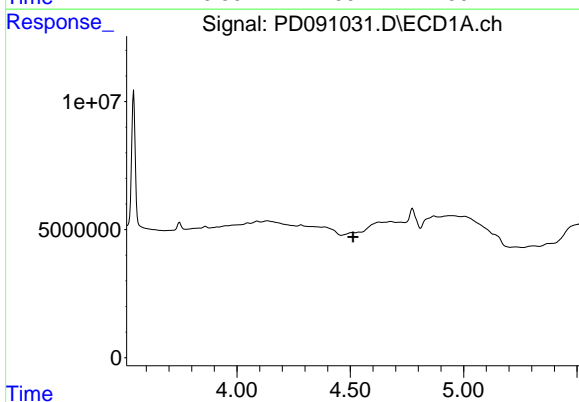
R.T.: 4.936 min
 Delta R.T.: 0.014 min
 Response: 5658488
 Conc: 1.01 ng/ml

Instrument :
 ECD_D
 ClientSampleId :



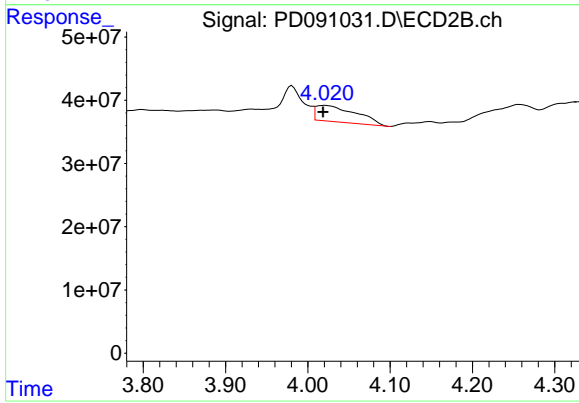
#4 Heptachlor

R.T.: 0.000 min
 Exp R.T. : 4.075 min
 Response: 0
 Conc: N.D.



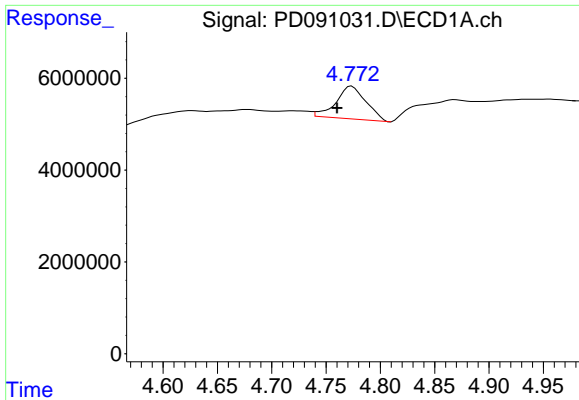
#6 beta-BHC

R.T.: 4.511 min
 Delta R.T.: -0.001 min
 Response: -1576989
 Conc: N.D.



#6 beta-BHC

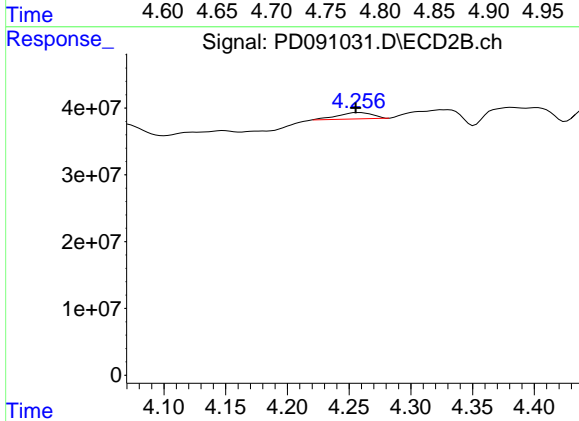
R.T.: 4.021 min
 Delta R.T.: 0.002 min
 Response: 86947947
 Conc: 4.38 ng/ml



#7 delta-BHC

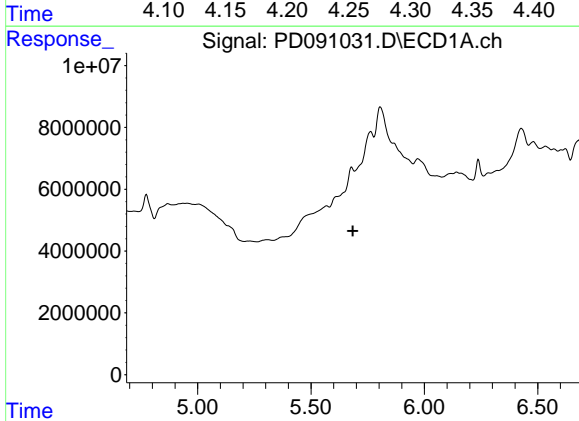
R.T.: 4.774 min
 Delta R.T.: 0.014 min
 Response: 13691942
 Conc: 2.02 ng/ml

Instrument :
 ECD_D
 ClientSampleId :



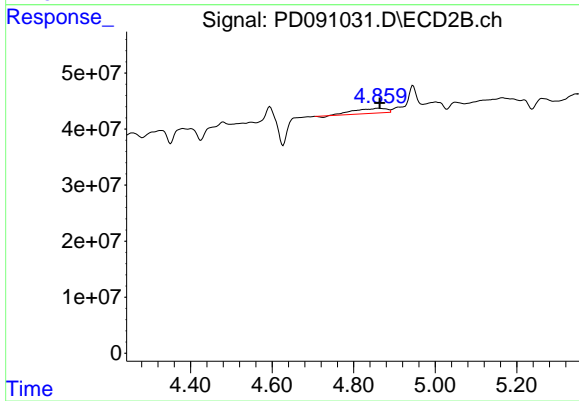
#7 delta-BHC

R.T.: 4.258 min
 Delta R.T.: 0.003 min
 Response: 18816444
 Conc: 0.39 ng/ml



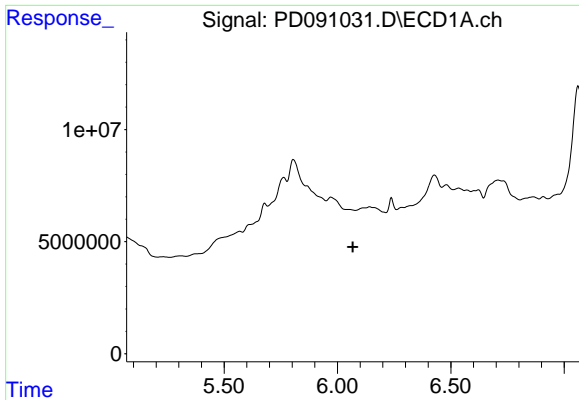
#8 Heptachlor epoxide

R.T.: 5.679 min
 Delta R.T.: -0.005 min
 Response: -1844958
 Conc: N.D.



#8 Heptachlor epoxide

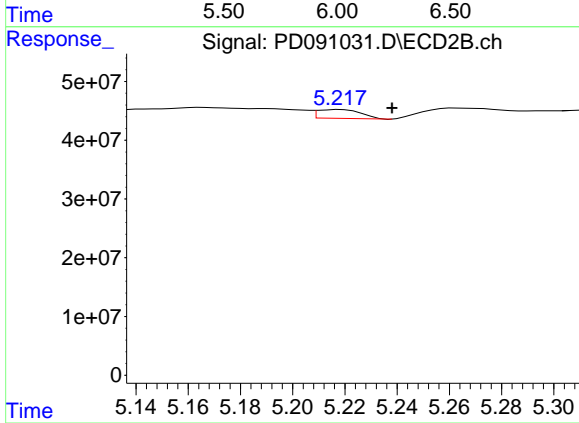
R.T.: 4.859 min
 Delta R.T.: -0.005 min
 Response: 47737525
 Conc: 1.12 ng/ml



#9 Endosulfan I

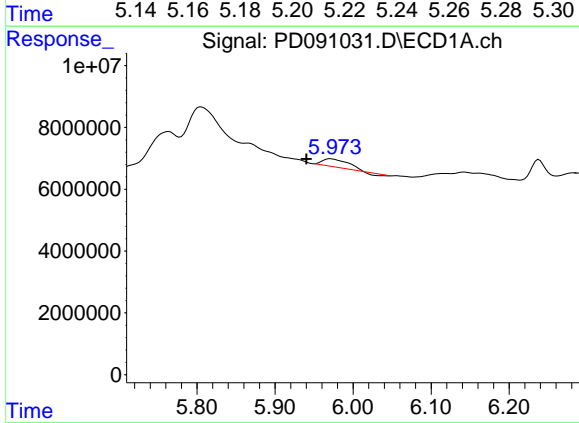
R.T.: 0.000 min
 Exp R.T.: 6.068 min
 Response: 0
 Conc: N.D.

Instrument :
 ECD_D
 ClientSampleId :



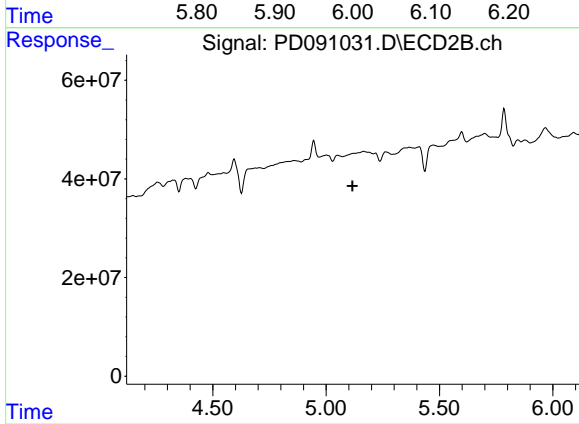
#9 Endosulfan I

R.T.: 5.218 min
 Delta R.T.: -0.020 min
 Response: 17465844
 Conc: 0.44 ng/ml



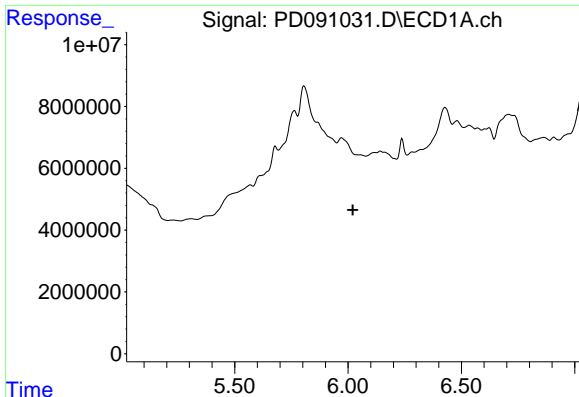
#10 gamma-Chlordane

R.T.: 5.971 min
 Delta R.T.: 0.031 min
 Response: 5421121
 Conc: 0.91 ng/ml



#10 gamma-Chlordane

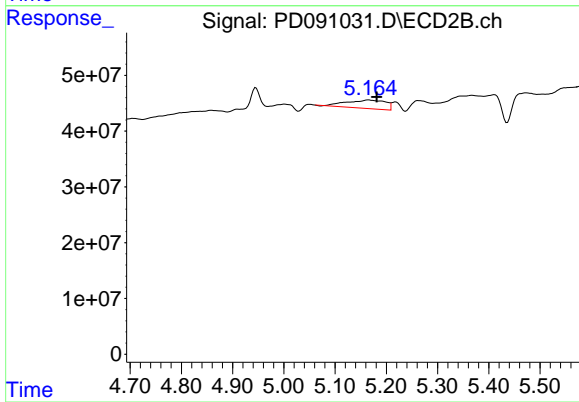
R.T.: 0.000 min
 Exp R.T.: 5.117 min
 Response: 0
 Conc: N.D.



#11 alpha-Chlordane

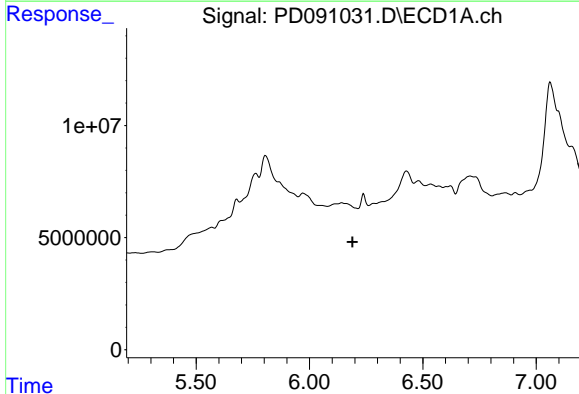
R.T.: 0.000 min
 Exp R.T.: 6.021 min
 Response: 0
 Conc: N.D.

Instrument :
 ECD_D
 ClientSampleId :



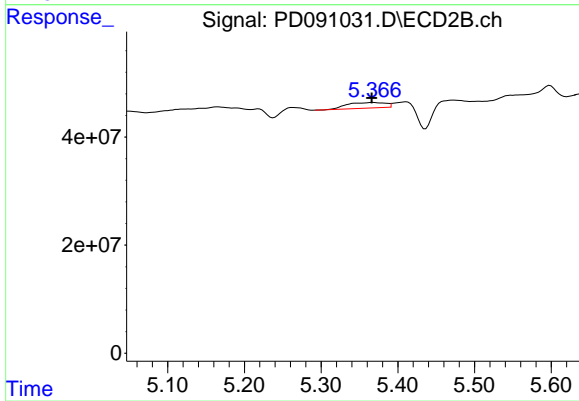
#11 alpha-Chlordane

R.T.: 5.165 min
 Delta R.T.: -0.016 min
 Response: 79960807
 Conc: 1.85 ng/ml



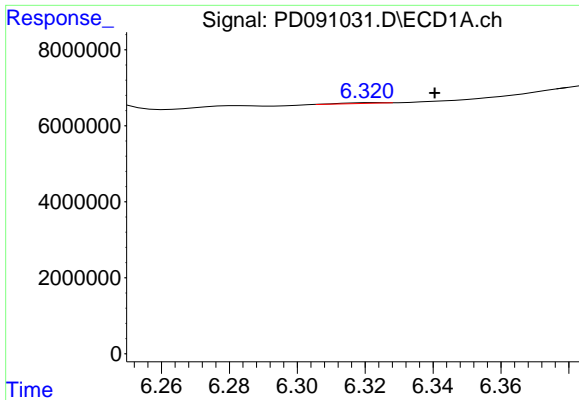
#12 4,4'-DDE

R.T.: 0.000 min
 Exp R.T.: 6.190 min
 Response: 0
 Conc: N.D.



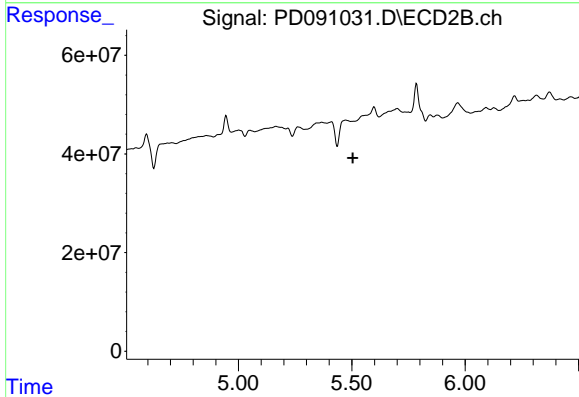
#12 4,4'-DDE

R.T.: 5.368 min
 Delta R.T.: 0.002 min
 Response: 36140868
 Conc: 0.82 ng/ml

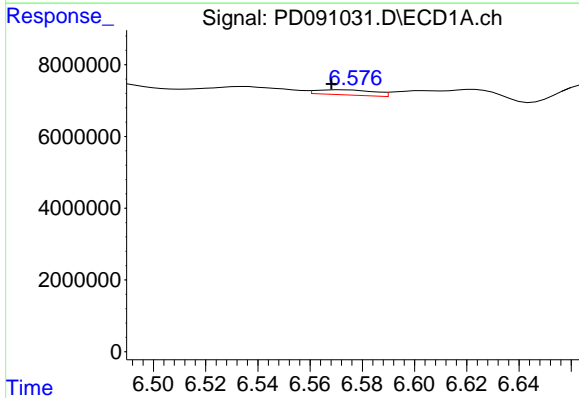


#13 Dieldrin
 R.T.: 6.323 min
 Delta R.T.: -0.018 min
 Response: 150873
 Conc: 0.03 ng/ml

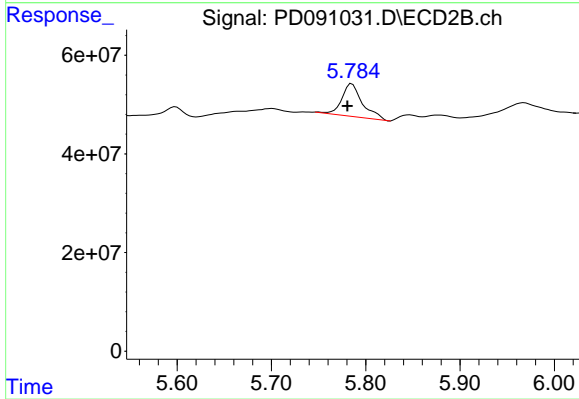
Instrument :
 ECD_D
 ClientSampleId :



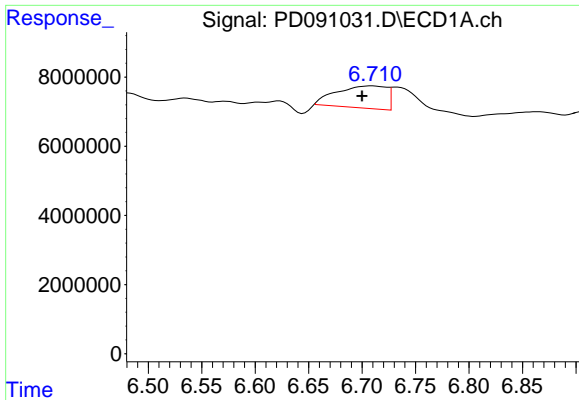
#13 Dieldrin
 R.T.: 0.000 min
 Exp R.T. : 5.504 min
 Response: 0
 Conc: N.D.



#14 Endrin
 R.T.: 6.572 min
 Delta R.T.: 0.004 min
 Response: 2190837
 Conc: 0.44 ng/ml



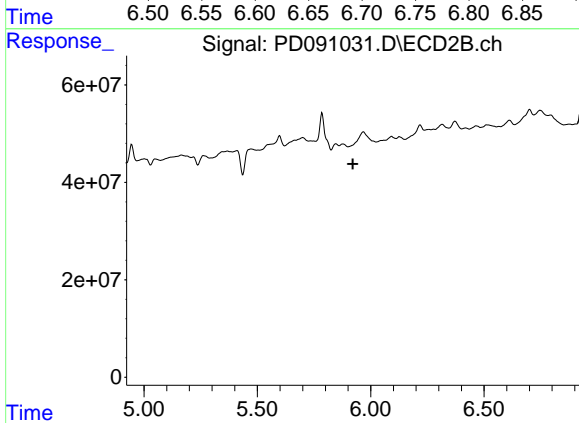
#14 Endrin
 R.T.: 5.785 min
 Delta R.T.: 0.005 min
 Response: 101604123
 Conc: 2.51 ng/ml



#16 4,4'-DDD

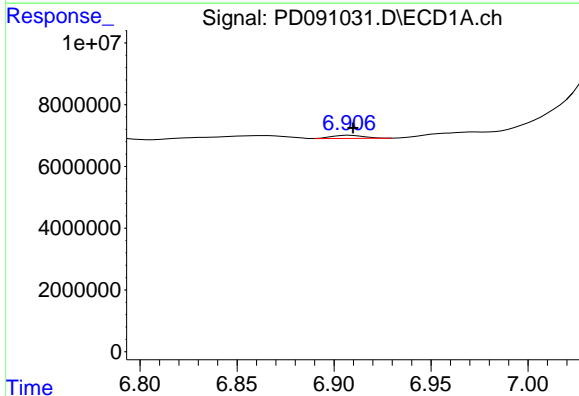
R.T.: 6.709 min
 Delta R.T.: 0.009 min
 Response: 20907019
 Conc: 5.16 ng/ml

Instrument :
 ECD_D
 ClientSampleId :



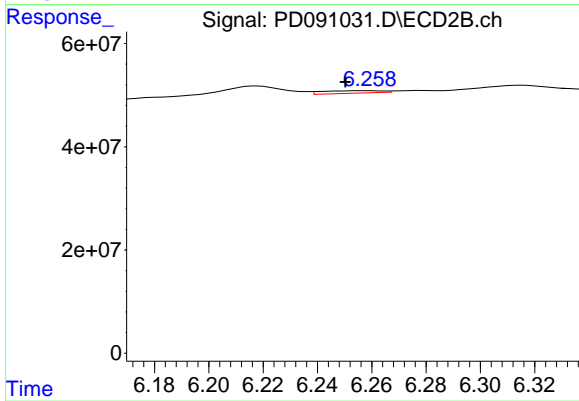
#16 4,4'-DDD

R.T.: 0.000 min
 Exp R.T. : 5.921 min
 Response: 0
 Conc: N.D.



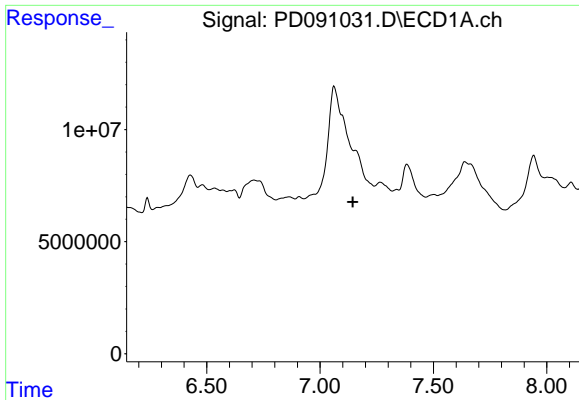
#18 Endrin aldehyde

R.T.: 6.908 min
 Delta R.T.: -0.002 min
 Response: 1149461
 Conc: 0.31 ng/ml



#18 Endrin aldehyde

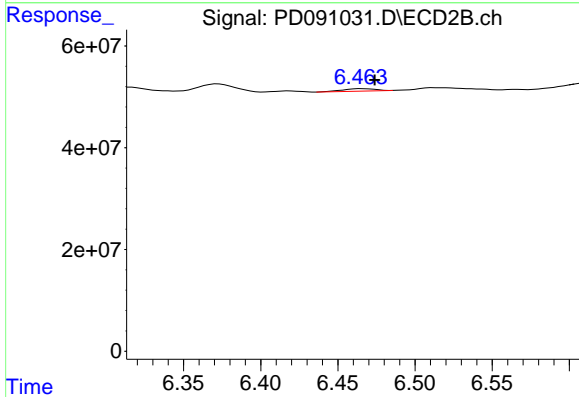
R.T.: 6.258 min
 Delta R.T.: 0.008 min
 Response: 7494599
 Conc: 0.27 ng/ml



#19 Endosulfan Sulfate

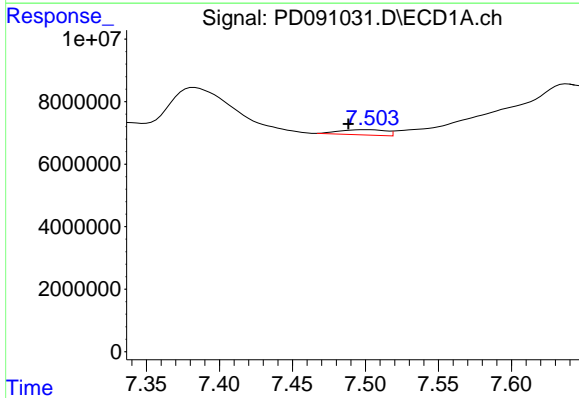
R.T.: 0.000 min
 Exp R.T.: 7.145 min
 Response: 0
 Conc: N.D.

Instrument :
 ECD_D
 ClientSampleId :



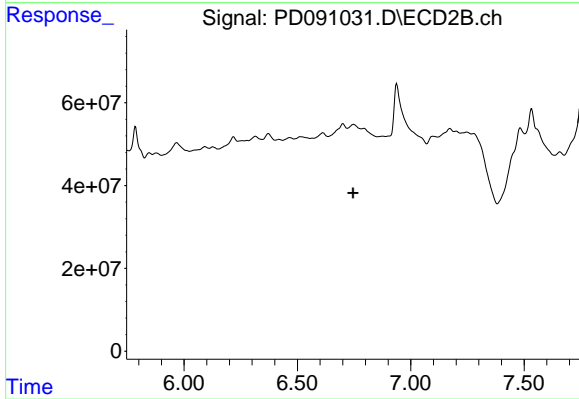
#19 Endosulfan Sulfate

R.T.: 6.466 min
 Delta R.T.: -0.008 min
 Response: 6912814
 Conc: 0.19 ng/ml



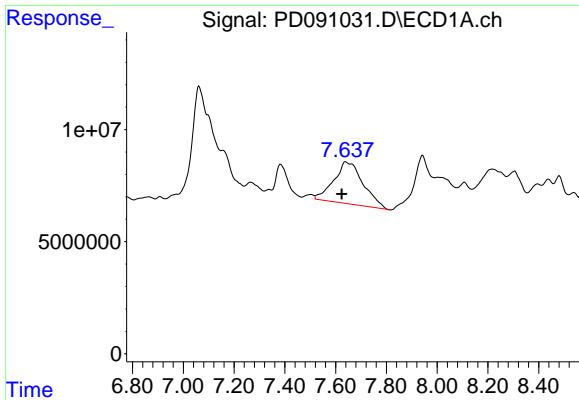
#20 Methoxychlor

R.T.: 7.502 min
 Delta R.T.: 0.014 min
 Response: 3710238
 Conc: 1.75 ng/ml



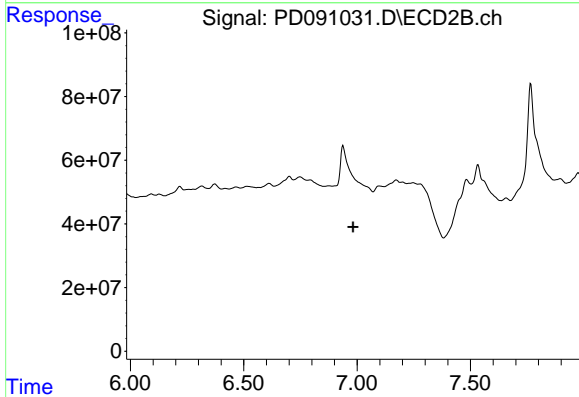
#20 Methoxychlor

R.T.: 6.748 min
 Delta R.T.: 0.003 min
 Response: -3411051
 Conc: N.D.

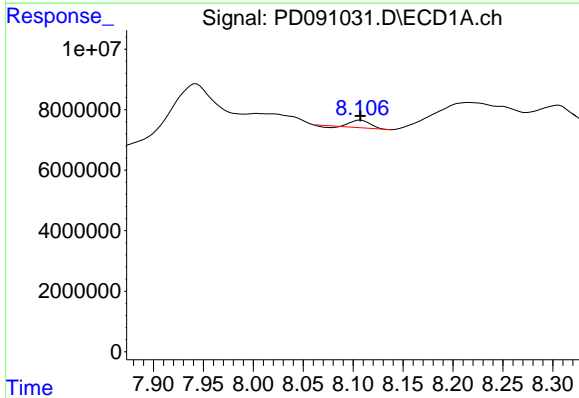


#21 Endrin ketone
 R.T.: 7.639 min
 Delta R.T.: 0.014 min
 Response: 149898694
 Conc: 30.85 ng/ml

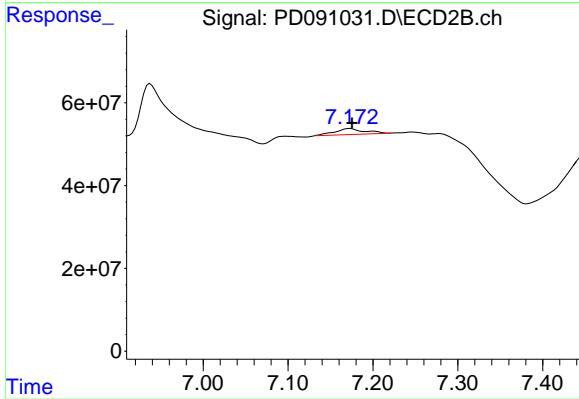
Instrument :
 ECD_D
 ClientSampleId :



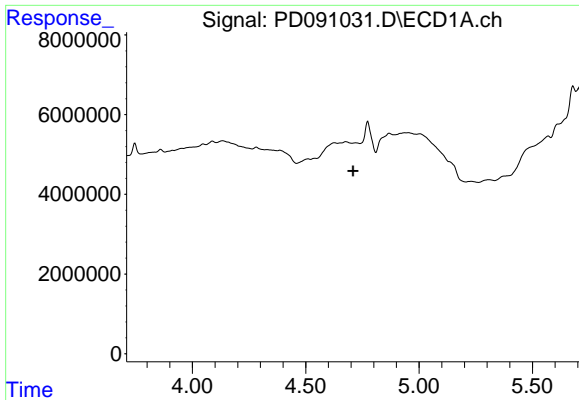
#21 Endrin ketone
 R.T.: 0.000 min
 Exp R.T. : 6.983 min
 Response: 0
 Conc: N.D.



#22 Mirex
 R.T.: 8.108 min
 Delta R.T.: 0.000 min
 Response: 2962355
 Conc: 0.93 ng/ml



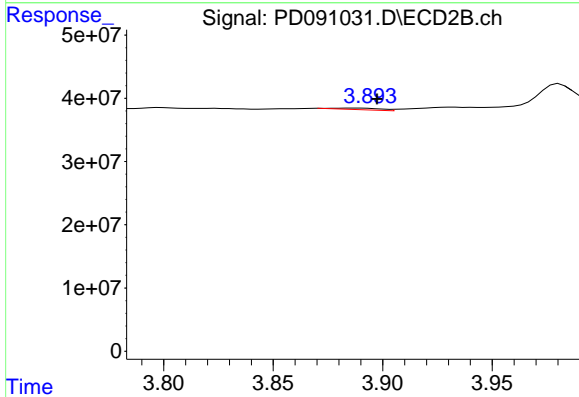
#22 Mirex
 R.T.: 7.173 min
 Delta R.T.: -0.002 min
 Response: 35228815
 Conc: 1.37 ng/ml



#23 Chlordane-1

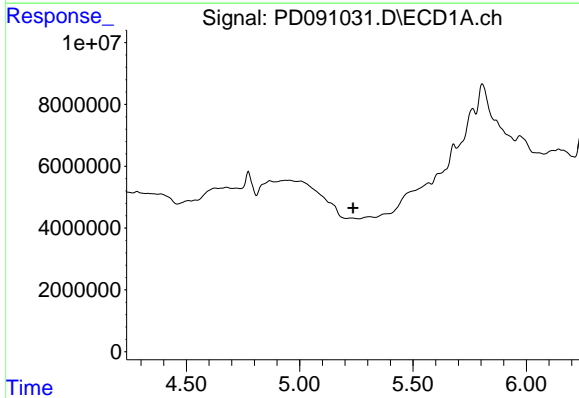
R.T.: 0.000 min
 Exp R.T.: 4.709 min
 Response: 0
 Conc: N.D.

Instrument :
 ECD_D
 ClientSampleId :



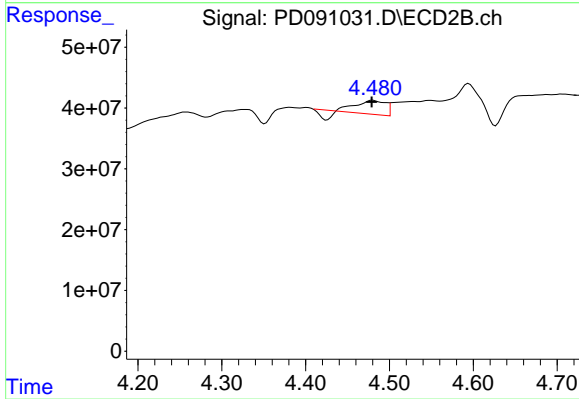
#23 Chlordane-1

R.T.: 3.889 min
 Delta R.T.: -0.009 min
 Response: 3639027
 Conc: 2.92 ng/ml



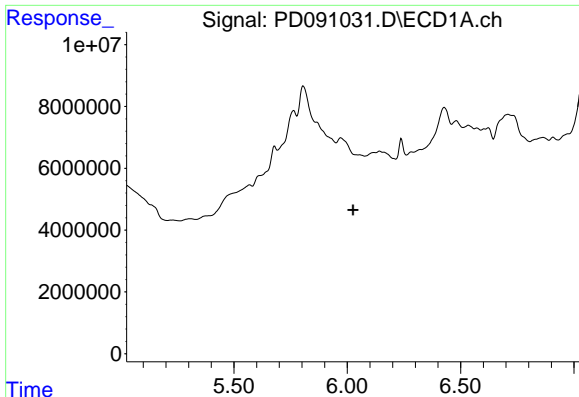
#24 Chlordane-2

R.T.: 5.232 min
 Delta R.T.: -0.004 min
 Response: -141507
 Conc: N.D.



#24 Chlordane-2

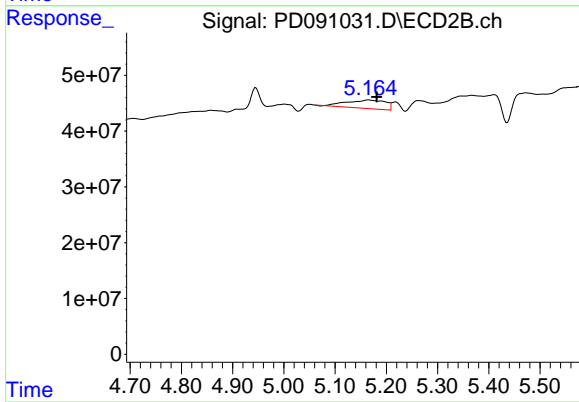
R.T.: 4.480 min
 Delta R.T.: 0.002 min
 Response: 44519259
 Conc: 34.13 ng/ml



#26 Chlordane-4

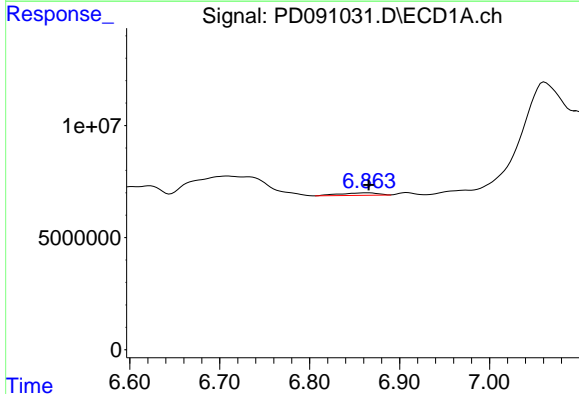
R.T.: 0.000 min
 Exp R.T.: 6.025 min
 Response: 0
 Conc: N.D.

Instrument :
 ECD_D
 ClientSampleId :



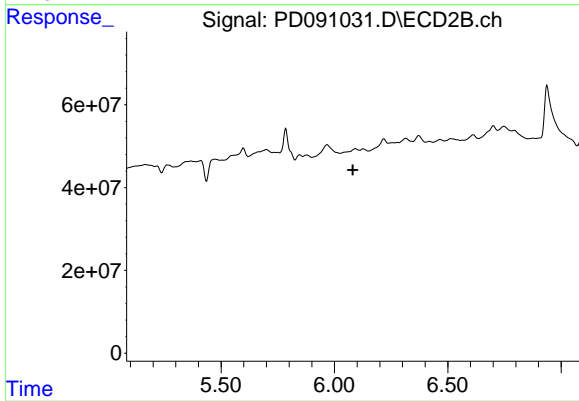
#26 Chlordane-4

R.T.: 5.165 min
 Delta R.T.: -0.017 min
 Response: 79960807
 Conc: 23.93 ng/ml



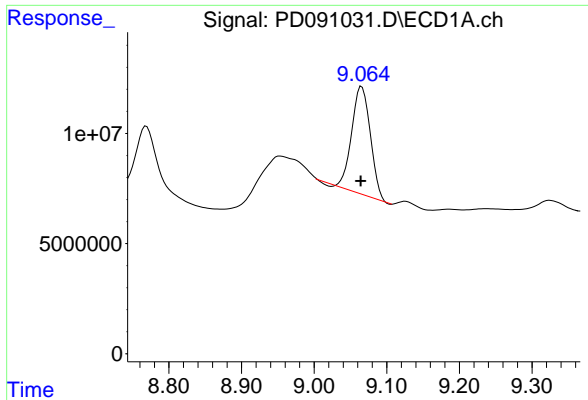
#27 Chlordane-5

R.T.: 6.865 min
 Delta R.T.: 0.000 min
 Response: 3330866
 Conc: 22.17 ng/ml



#27 Chlordane-5

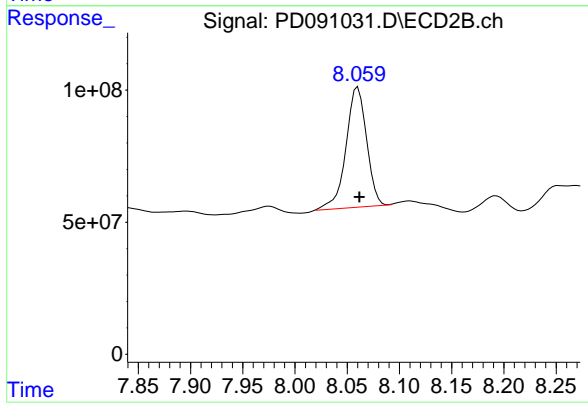
R.T.: 6.093 min
 Delta R.T.: 0.011 min
 Response: -2973273
 Conc: N.D.



#28 Decachlorobiphenyl

R.T.: 9.066 min
Delta R.T.: 0.001 min
Response: 87613539
Conc: 18.73 ng/ml

Instrument :
ECD_D
ClientSampleId :



#28 Decachlorobiphenyl

R.T.: 8.060 min
Delta R.T.: -0.001 min
Response: 623405360
Conc: 20.58 ng/ml