

Data Path : Z:\pestpcbsrv\HPCHEM1\ECD_D\Data\PD110818\
 Data File : PD050256.D
 Signal(s) : Signal #1: ECD1A.CH Signal #2: ECD2B.CH
 Acq On : 08 Nov 2018 21:27
 Operator : AJ\SJ
 Sample : PB114623BSD
 Misc :
 ALS Vial : 31 Sample Multiplier: 1

Instrument :
 ECD_D
 ClientSampleId :

Integration File signal 1: autoint1.e
 Integration File signal 2: autoint2.e
 Quant Time: Nov 09 08:24:14 2018
 Quant Method : Z:\pestpcbsrv\HPCHEM1\ECD_D\Method\PD103018.M
 Quant Title : GC Extractables
 QLast Update : Tue Oct 30 03:08:01 2018
 Response via : Initial Calibration
 Integrator: ChemStation 6890 Scale Mode: Large solvent peaks clipped

Volume Inj. : 2 µl
 Signal #1 Phase : ZB-MR2 Signal #2 Phase: ZB-MR1
 Signal #1 Info : 30M x 0.32mm x0.2 Signal #2 Info : 30M x 0.32mm x 0.50µm

Compound	RT#1	RT#2	Resp#1	Resp#2	ng/ml	ng/ml
System Monitoring Compounds						
1) SA Tetrachlo...	4.234	4.059	12348185	559.5E6	19.697	20.089
28) SA Decachlor...	9.017	9.166	13250400	370.8E6	22.043	21.573
Target Compounds						
2) A alpha-BHC	4.686	4.452	46457697	1957.0E6	48.868	44.660
3) MA gamma-BHC...	4.979	4.739	43883474	1768.6E6	48.311	45.266
4) MA Heptachlor	5.291	5.253	42845452	1747.1E6	49.839	46.672
5) MB Aldrin	5.550	5.561	42179443	1688.0E6	50.708	47.333
6) B beta-BHC	5.218	4.907	18902747	751.1E6	49.915	46.990
7) B delta-BHC	5.437	5.127	38580303	1554.4E6	44.251	40.599
8) B Heptachlo...	5.991	5.947	38885383	1471.7E6	49.174	46.350
9) A Endosulfan I	6.336	6.306	36574549	1313.7E6	48.896	46.458
10) B gamma-Chl...	6.214	6.182	40284848	1489.2E6	48.740	45.942
11) B alpha-Chl...	6.274	6.255	39773277	1419.6E6	48.551	45.821
12) B 4,4'-DDE	6.417	6.410	37271822	1371.8E6	48.728	46.027
13) MA Dieldrin	6.577	6.564	39085896	1371.8E6	48.381	45.281
14) MA Endrin	6.837	6.783	30215792	1002.9E6	43.031	42.338
15) B Endosulfa...	7.099	6.990	34248604	1084.0E6	46.736	44.837
16) A 4,4'-DDD	6.928	6.901	30266351	1039.4E6	48.900	45.365
17) MA 4,4'-DDT	7.168	7.201	28850797	867.2E6	47.011	46.851
18) B Endrin al...	7.264	7.115	27639420	911.3E6	49.596	47.153
19) B Endosulfa...	7.470	7.338	32785296	1027.6E6	50.135	47.061
20) A Methoxychlor	7.693	7.657	15699280	448.2E6	50.027	49.975
21) B Endrin ke...	7.965	7.811	38618660	1017.5E6	52.078	50.441
23) Chlordane-1	5.166	5.127	1425226	1554.4E6	48.618	1114.867 #
24) Chlordane-2	0.000	5.561	0	1688.0E6	N.D.	1372.877 #
25) Chlordane-3	6.214	6.182	40284848	1489.2E6	459.014	357.091
26) Chlordane-4	6.274	6.255	39773277	1419.6E6	549.002	302.927 #
27) Chlordane-5	7.099	7.115	34248604	911.3E6	1125.415	983.689

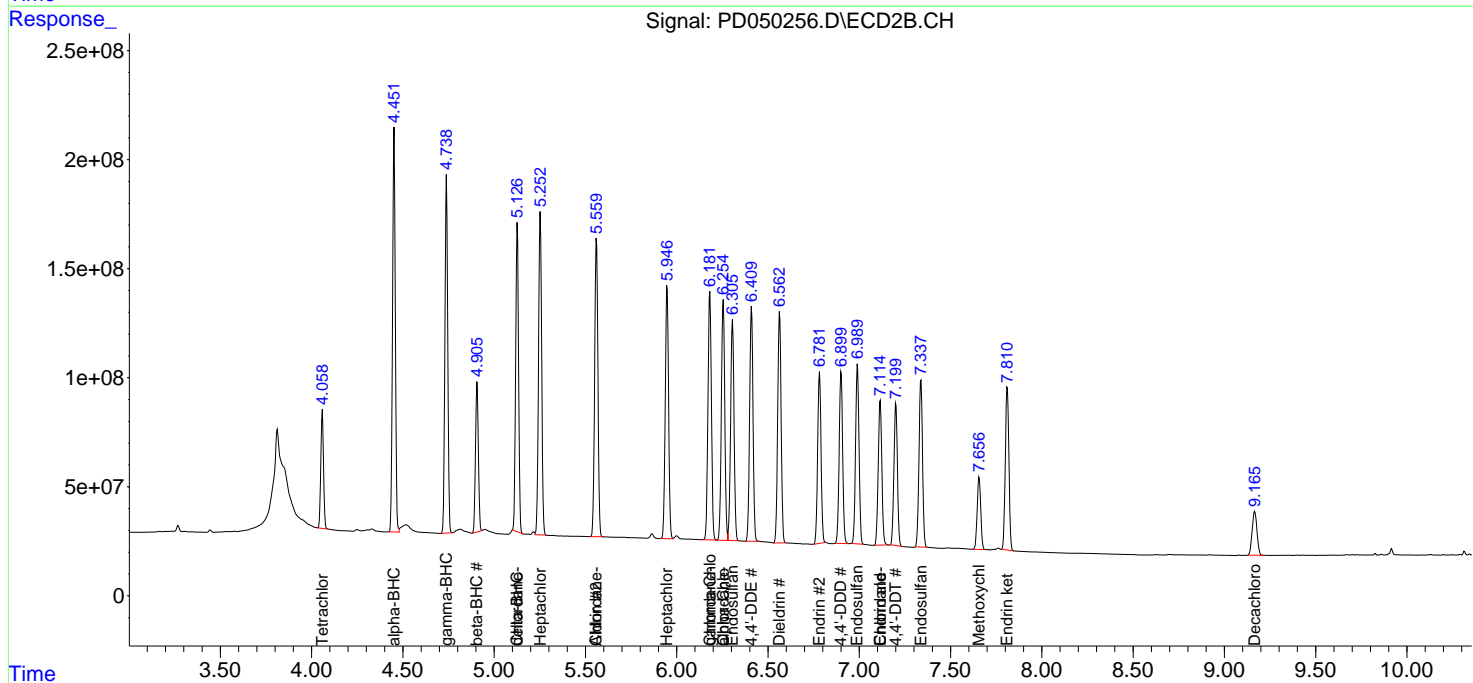
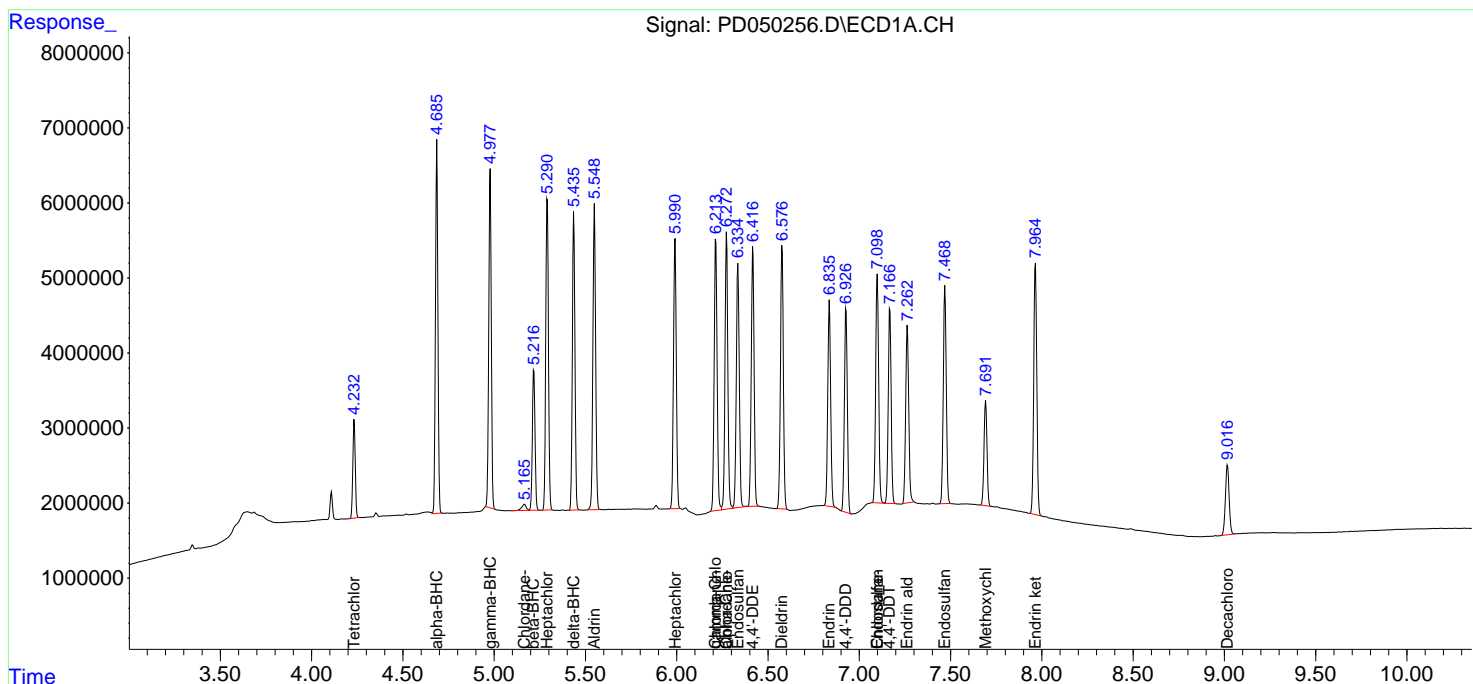
(f)=RT Delta > 1/2 Window (#)=Amounts differ by > 25% (m)=manual int.

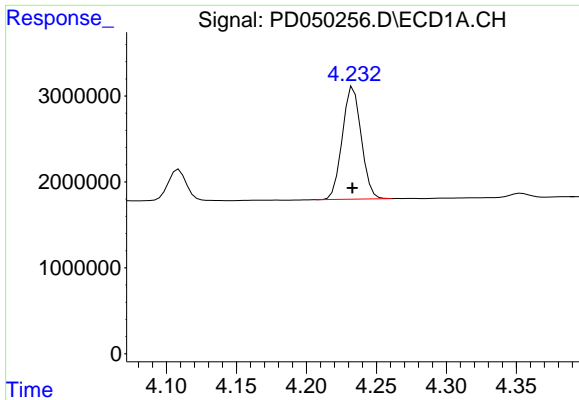
Data Path : Z:\pestpcbsrv\HPCHEM1\ECD_D\Data\PD110818\
 Data File : PD050256.D
 Signal(s) : Signal #1: ECD1A.CH Signal #2: ECD2B.CH
 Acq On : 08 Nov 2018 21:27
 Operator : AJ\SJ
 Sample : PB114623BSD
 Misc :
 ALS Vial : 31 Sample Multiplier: 1

Instrument :
 ECD_D
 ClientSampled :

Integration File signal 1: autoint1.e
 Integration File signal 2: autoint2.e
 Quant Time: Nov 09 08:24:14 2018
 Quant Method : Z:\pestpcbsrv\HPCHEM1\ECD_D\Method\PD103018.M
 Quant Title : GC Extractables
 QLast Update : Tue Oct 30 03:08:01 2018
 Response via : Initial Calibration
 Integrator: ChemStation 6890 Scale Mode: Large solvent peaks clipped

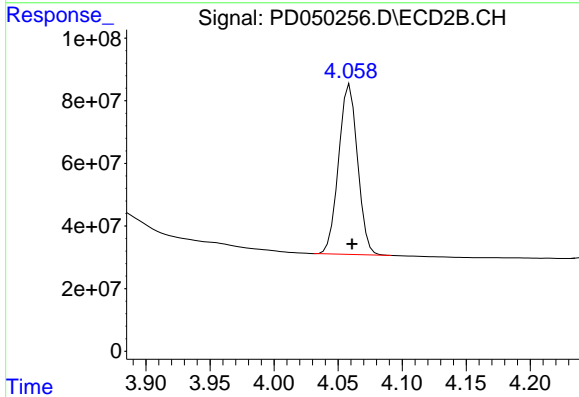
Volume Inj. : 2 µl
 Signal #1 Phase : ZB-MR2 Signal #2 Phase: ZB-MR1
 Signal #1 Info : 30M x 0.32mm x0.2 Signal #2 Info : 30M x 0.32mm x 0.50µm



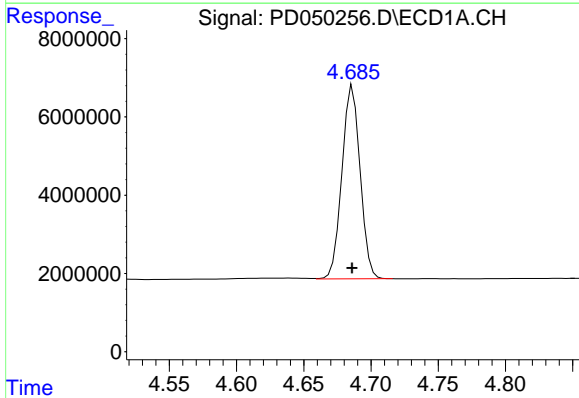


#1 Tetrachloro-m-xylene
 R.T.: 4.234 min
 Delta R.T.: 0.000 min
 Response: 12348185
 Conc: 19.70 ng/ml

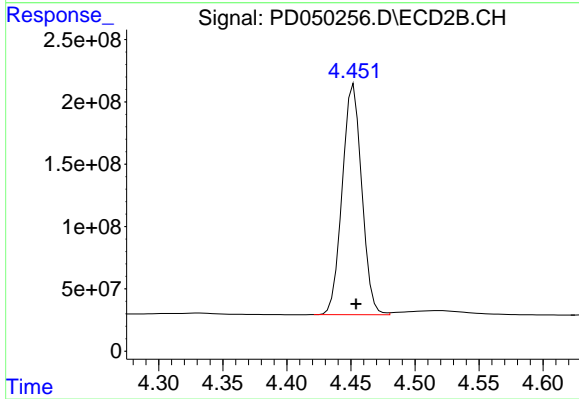
Instrument :
 ECD_D
 ClientSampleId :



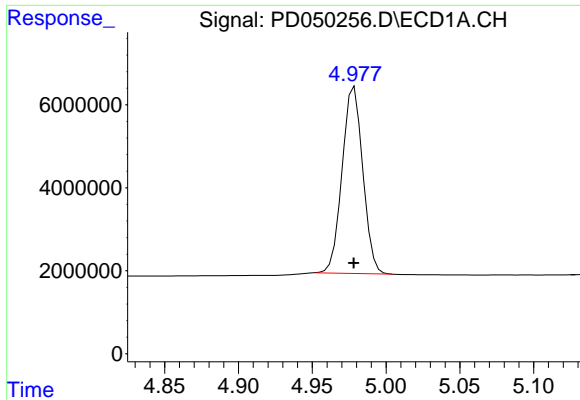
#1 Tetrachloro-m-xylene
 R.T.: 4.059 min
 Delta R.T.: -0.002 min
 Response: 559471105
 Conc: 20.09 ng/ml



#2 alpha-BHC
 R.T.: 4.686 min
 Delta R.T.: 0.000 min
 Response: 46457697
 Conc: 48.87 ng/ml



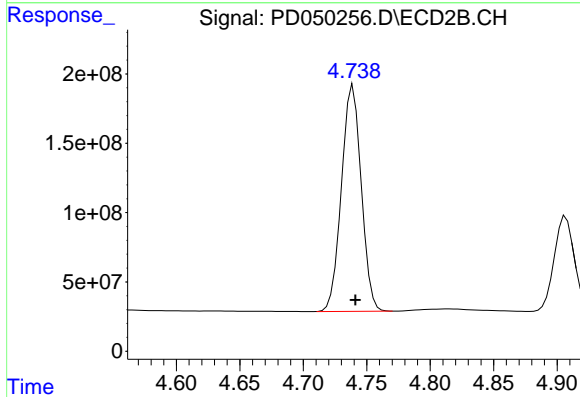
#2 alpha-BHC
 R.T.: 4.452 min
 Delta R.T.: -0.002 min
 Response: 1956954494
 Conc: 44.66 ng/ml



#3 gamma-BHC (Lindane)

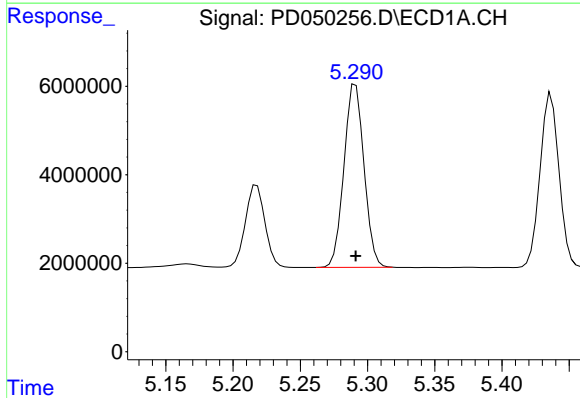
R.T.: 4.979 min
 Delta R.T.: 0.000 min
 Response: 43883474
 Conc: 48.31 ng/ml

Instrument :
 ECD_D
 ClientSampled :



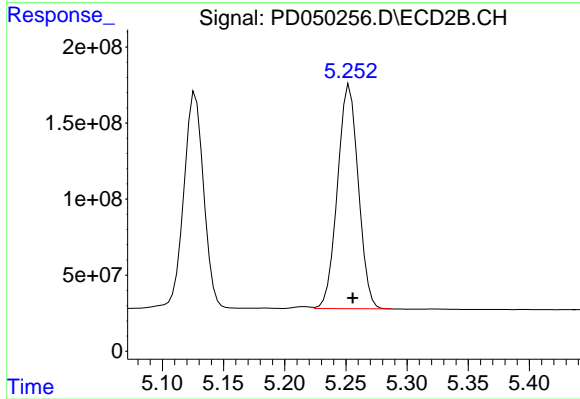
#3 gamma-BHC (Lindane)

R.T.: 4.739 min
 Delta R.T.: -0.002 min
 Response: 1768649281
 Conc: 45.27 ng/ml



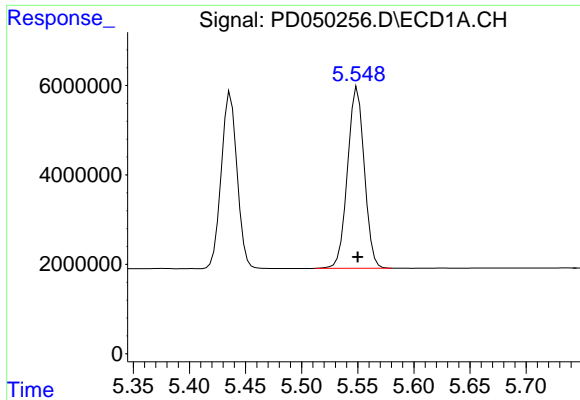
#4 Heptachlor

R.T.: 5.291 min
 Delta R.T.: 0.000 min
 Response: 42845452
 Conc: 49.84 ng/ml



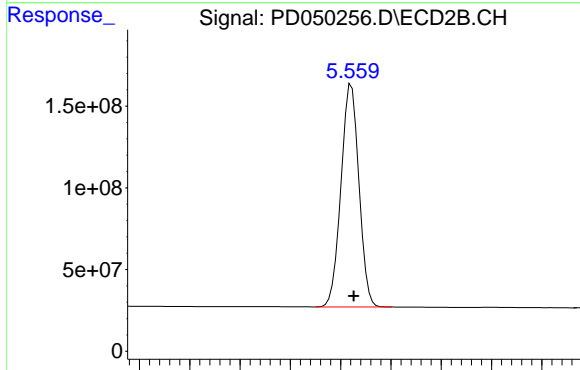
#4 Heptachlor

R.T.: 5.253 min
 Delta R.T.: -0.002 min
 Response: 1747107834
 Conc: 46.67 ng/ml

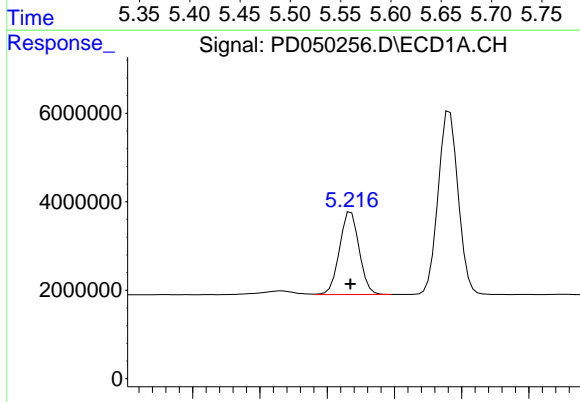


#5 Aldrin
 R.T.: 5.550 min
 Delta R.T.: 0.000 min
 Response: 42179443
 Conc: 50.71 ng/ml

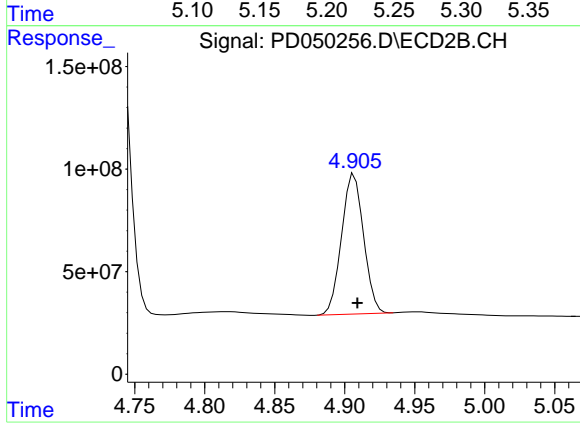
Instrument :
 ECD_D
 ClientSampled :



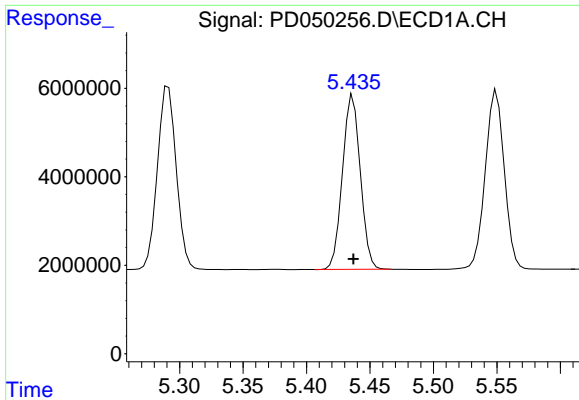
#5 Aldrin
 R.T.: 5.561 min
 Delta R.T.: -0.002 min
 Response: 1687999842
 Conc: 47.33 ng/ml



#6 beta-BHC
 R.T.: 5.218 min
 Delta R.T.: 0.000 min
 Response: 18902747
 Conc: 49.91 ng/ml

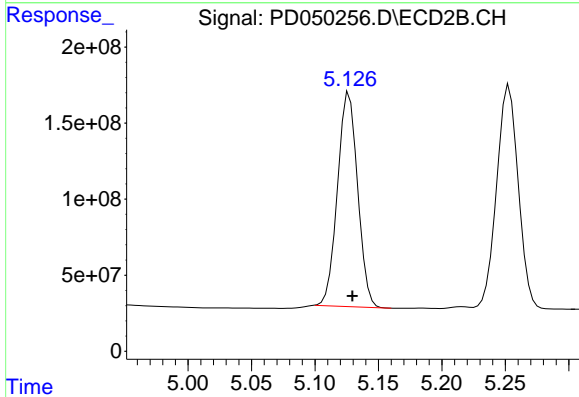


#6 beta-BHC
 R.T.: 4.907 min
 Delta R.T.: -0.002 min
 Response: 751134175
 Conc: 46.99 ng/ml

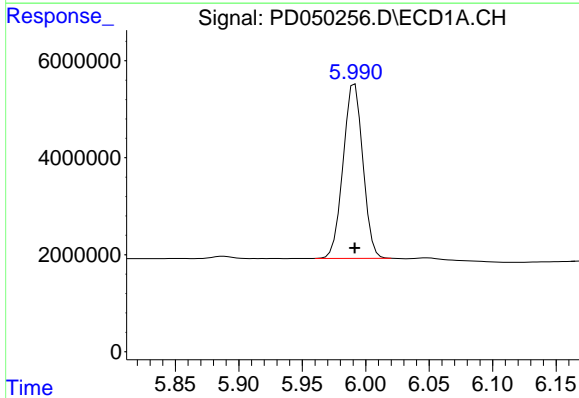


#7 delta-BHC
 R.T.: 5.437 min
 Delta R.T.: 0.000 min
 Response: 38580303
 Conc: 44.25 ng/ml

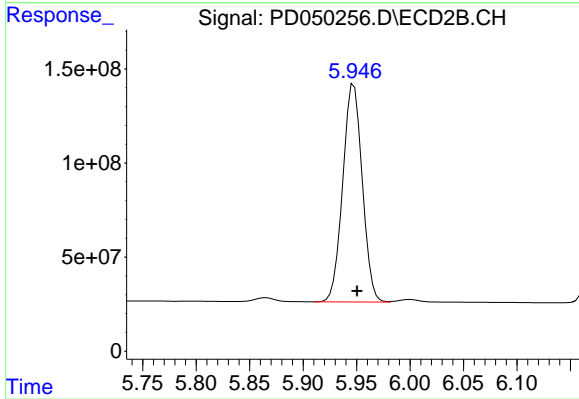
Instrument :
 ECD_D
 ClientSampled :



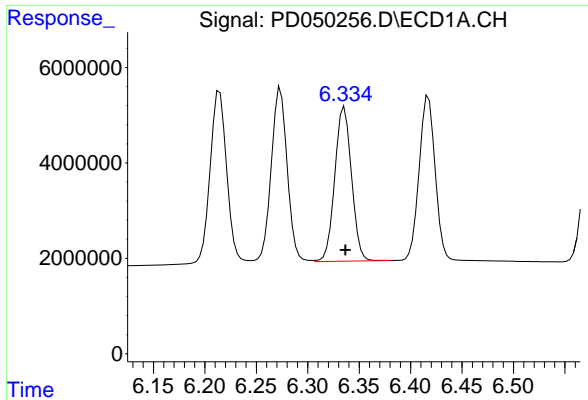
#7 delta-BHC
 R.T.: 5.127 min
 Delta R.T.: -0.002 min
 Response: 1554373827
 Conc: 40.60 ng/ml



#8 Heptachlor epoxide
 R.T.: 5.991 min
 Delta R.T.: 0.000 min
 Response: 38885383
 Conc: 49.17 ng/ml

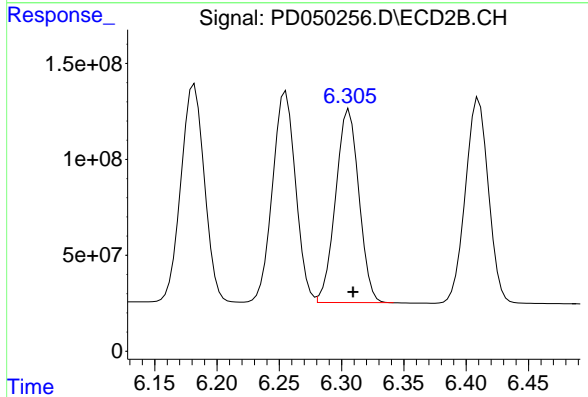


#8 Heptachlor epoxide
 R.T.: 5.947 min
 Delta R.T.: -0.003 min
 Response: 1471743584
 Conc: 46.35 ng/ml

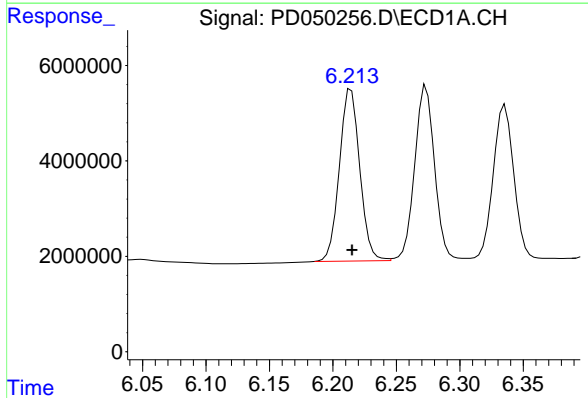


#9 Endosulfan I
 R.T.: 6.336 min
 Delta R.T.: 0.000 min
 Response: 36574549
 Conc: 48.90 ng/ml

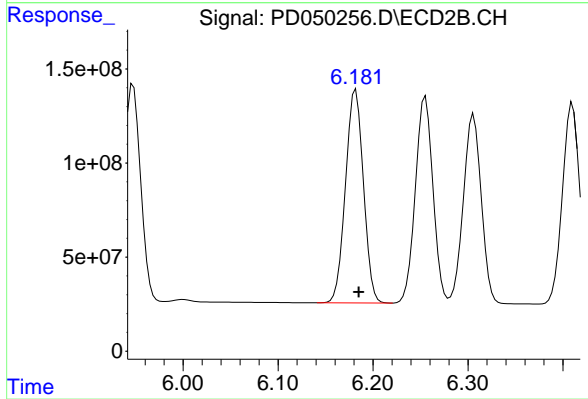
Instrument :
 ECD_D
 ClientSampled :



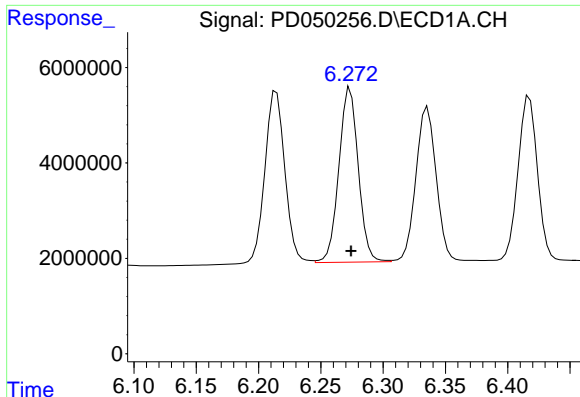
#9 Endosulfan I
 R.T.: 6.306 min
 Delta R.T.: -0.003 min
 Response: 1313675000
 Conc: 46.46 ng/ml



#10 gamma-Chlordane
 R.T.: 6.214 min
 Delta R.T.: 0.000 min
 Response: 40284848
 Conc: 48.74 ng/ml



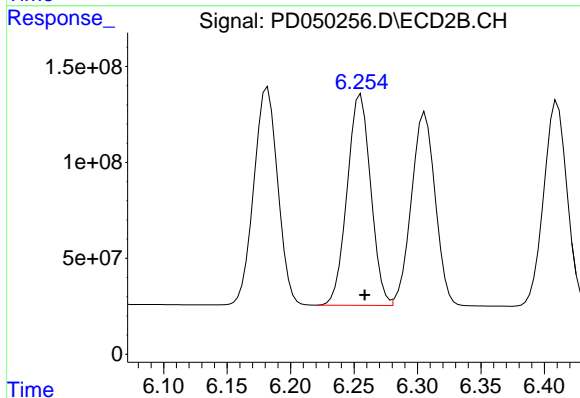
#10 gamma-Chlordane
 R.T.: 6.182 min
 Delta R.T.: -0.003 min
 Response: 1489232768
 Conc: 45.94 ng/ml



#11 alpha-Chlordane

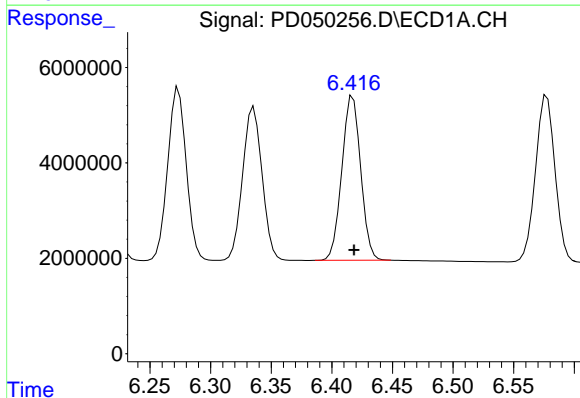
R.T.: 6.274 min
 Delta R.T.: 0.000 min
 Response: 39773277
 Conc: 48.55 ng/ml

Instrument :
 ECD_D
 ClientSampled :



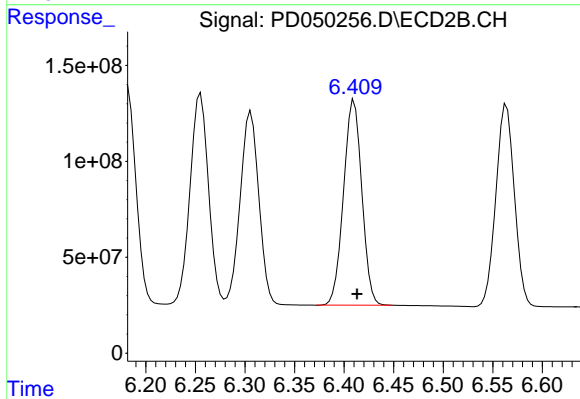
#11 alpha-Chlordane

R.T.: 6.255 min
 Delta R.T.: -0.003 min
 Response: 1419622939
 Conc: 45.82 ng/ml



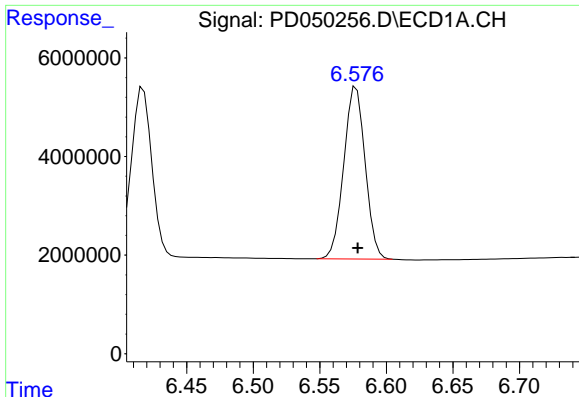
#12 4,4'-DDE

R.T.: 6.417 min
 Delta R.T.: 0.000 min
 Response: 37271822
 Conc: 48.73 ng/ml



#12 4,4'-DDE

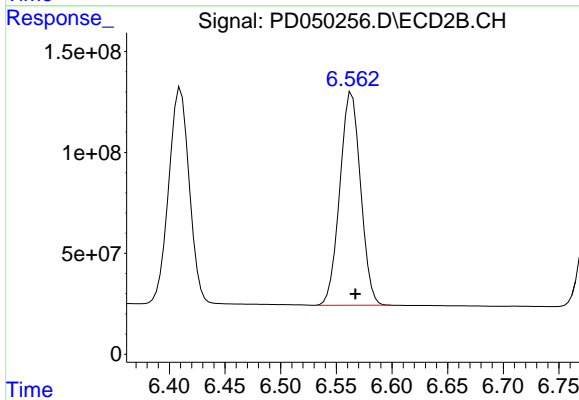
R.T.: 6.410 min
 Delta R.T.: -0.003 min
 Response: 1371842630
 Conc: 46.03 ng/ml



#13 Dieldrin

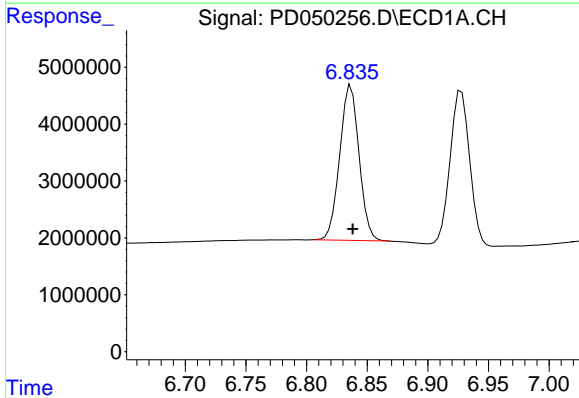
R.T.: 6.577 min
Delta R.T.: -0.001 min
Response: 39085896
Conc: 48.38 ng/ml

Instrument :
ECD_D
ClientSampled :



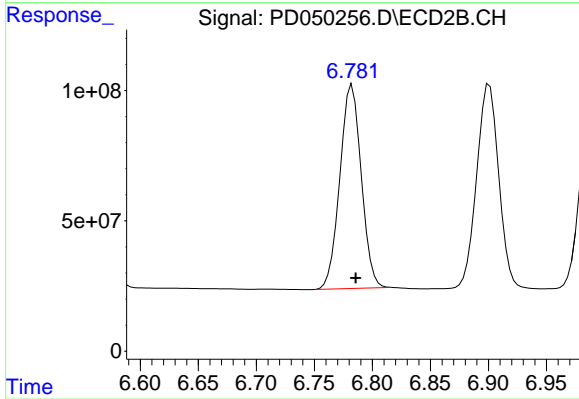
#13 Dieldrin

R.T.: 6.564 min
Delta R.T.: -0.003 min
Response: 1371825104
Conc: 45.28 ng/ml



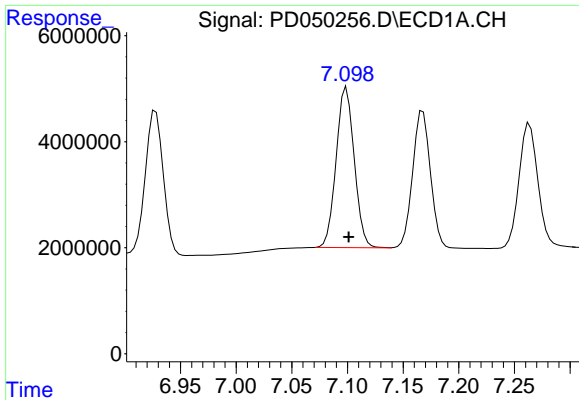
#14 Endrin

R.T.: 6.837 min
Delta R.T.: -0.001 min
Response: 30215792
Conc: 43.03 ng/ml



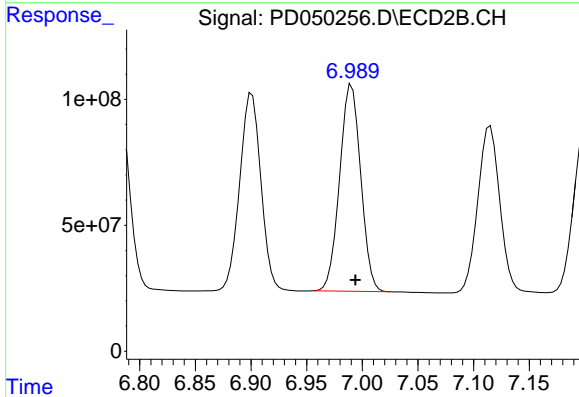
#14 Endrin

R.T.: 6.783 min
Delta R.T.: -0.003 min
Response: 1002871606
Conc: 42.34 ng/ml

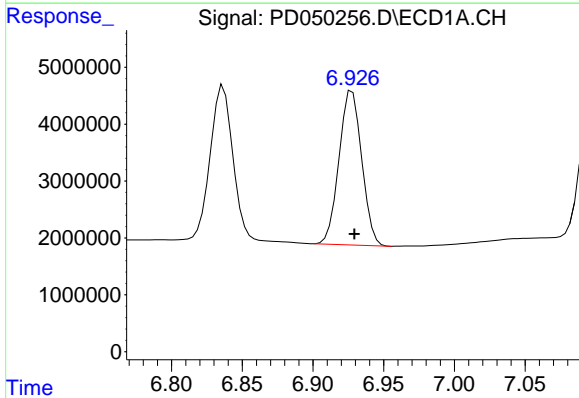


#15 Endosulfan II
 R.T.: 7.099 min
 Delta R.T.: -0.002 min
 Response: 34248604
 Conc: 46.74 ng/ml

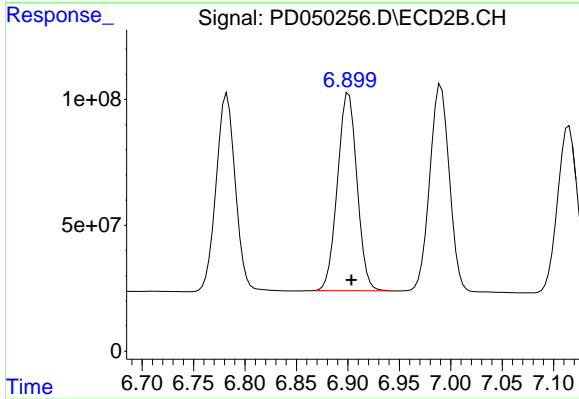
Instrument :
 ECD_D
 ClientSampled :



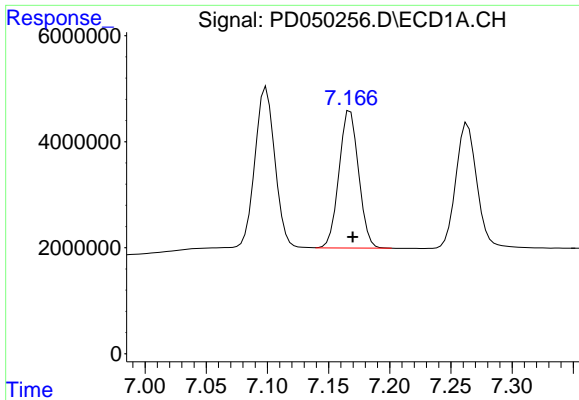
#15 Endosulfan II
 R.T.: 6.990 min
 Delta R.T.: -0.003 min
 Response: 1083968029
 Conc: 44.84 ng/ml



#16 4,4'-DDD
 R.T.: 6.928 min
 Delta R.T.: -0.002 min
 Response: 30266351
 Conc: 48.90 ng/ml

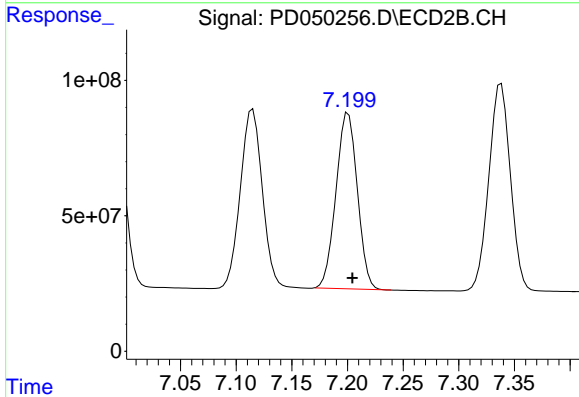


#16 4,4'-DDD
 R.T.: 6.901 min
 Delta R.T.: -0.003 min
 Response: 1039434600
 Conc: 45.36 ng/ml

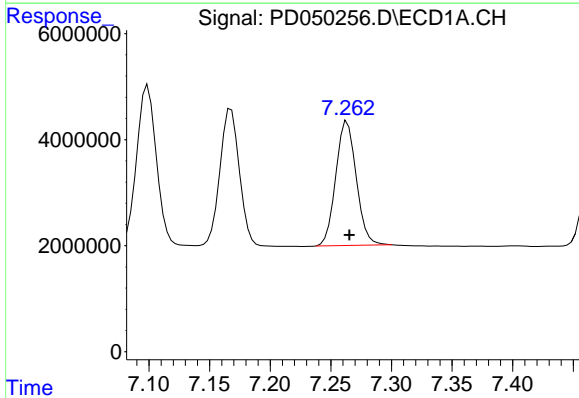


#17 4,4'-DDT
 R.T.: 7.168 min
 Delta R.T.: -0.002 min
 Response: 28850797
 Conc: 47.01 ng/ml

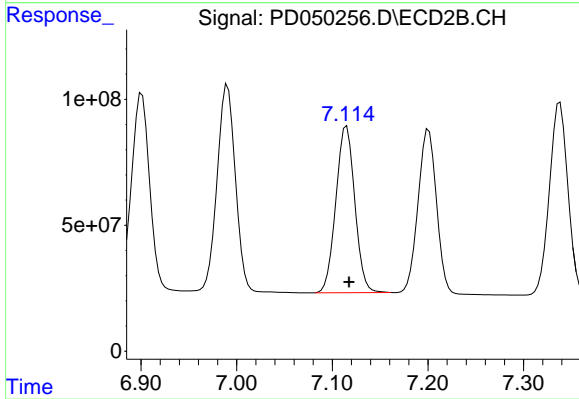
Instrument :
 ECD_D
 ClientSampled :



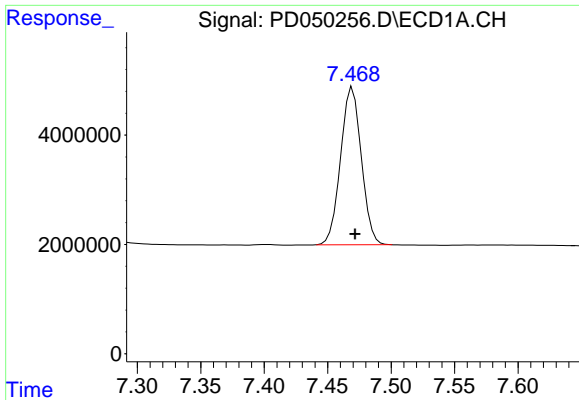
#17 4,4'-DDT
 R.T.: 7.201 min
 Delta R.T.: -0.004 min
 Response: 867233449
 Conc: 46.85 ng/ml



#18 Endrin aldehyde
 R.T.: 7.264 min
 Delta R.T.: -0.002 min
 Response: 27639420
 Conc: 49.60 ng/ml



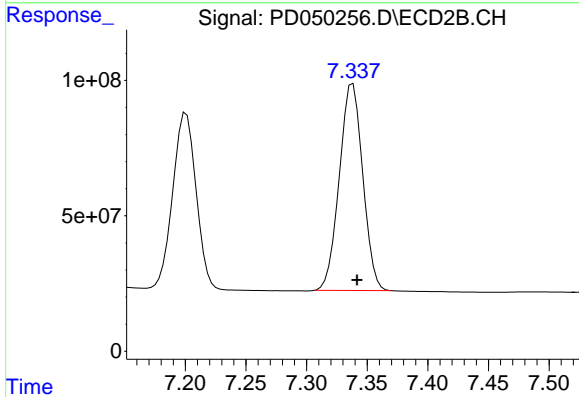
#18 Endrin aldehyde
 R.T.: 7.115 min
 Delta R.T.: -0.003 min
 Response: 911268146
 Conc: 47.15 ng/ml



#19 Endosulfan Sulfate

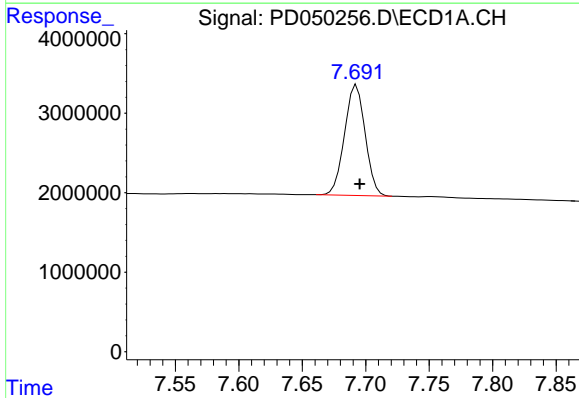
R.T.: 7.470 min
 Delta R.T.: -0.002 min
 Response: 32785296
 Conc: 50.13 ng/ml

Instrument :
 ECD_D
 ClientSampled :



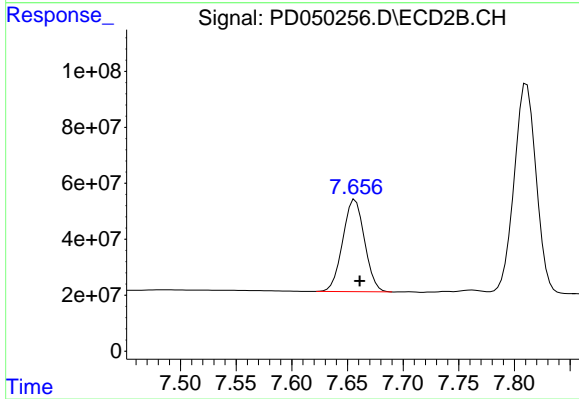
#19 Endosulfan Sulfate

R.T.: 7.338 min
 Delta R.T.: -0.003 min
 Response: 1027595386
 Conc: 47.06 ng/ml



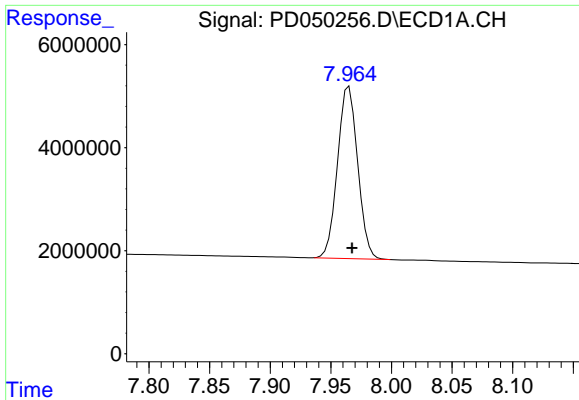
#20 Methoxychlor

R.T.: 7.693 min
 Delta R.T.: -0.002 min
 Response: 15699280
 Conc: 50.03 ng/ml



#20 Methoxychlor

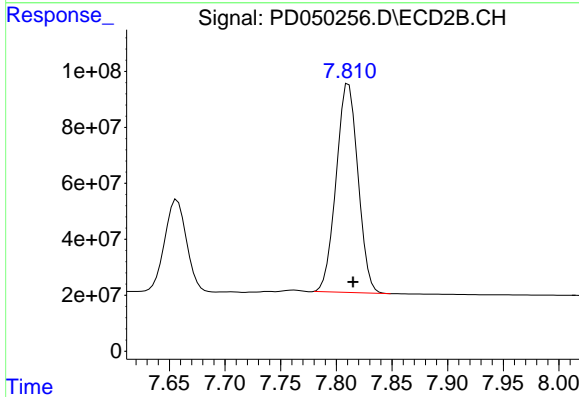
R.T.: 7.657 min
 Delta R.T.: -0.004 min
 Response: 448237389
 Conc: 49.97 ng/ml



#21 Endrin ketone

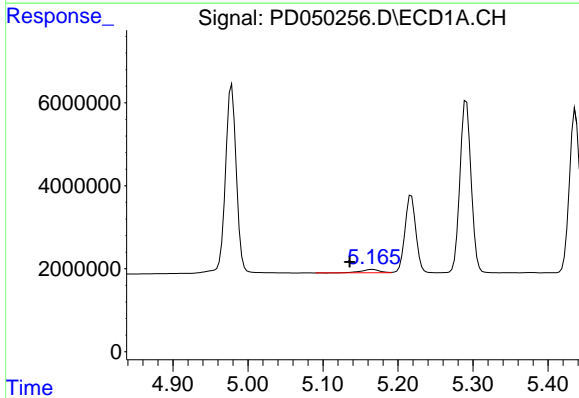
R.T.: 7.965 min
 Delta R.T.: -0.002 min
 Response: 38618660
 Conc: 52.08 ng/ml

Instrument :
 ECD_D
 ClientSampleId :



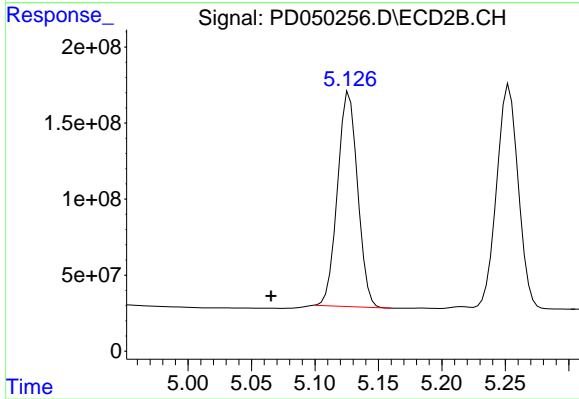
#21 Endrin ketone

R.T.: 7.811 min
 Delta R.T.: -0.004 min
 Response: 1017539994
 Conc: 50.44 ng/ml



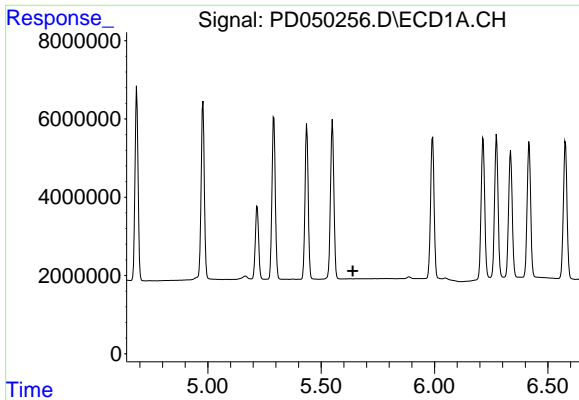
#23 Chlordane-1

R.T.: 5.166 min
 Delta R.T.: 0.030 min
 Response: 1425226
 Conc: 48.62 ng/ml



#23 Chlordane-1

R.T.: 5.127 min
 Delta R.T.: 0.062 min
 Response: 1554373827
 Conc: 1114.87 ng/ml

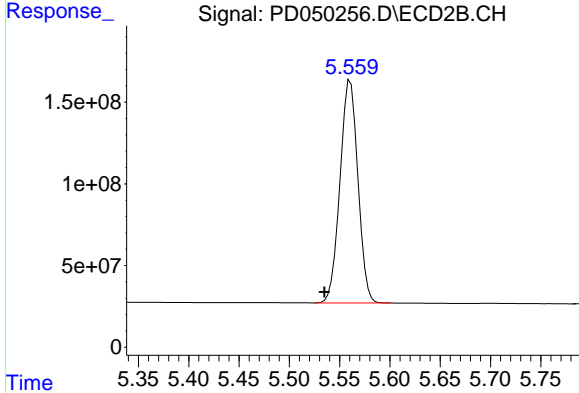


#24 Chlordane-2

R.T.: 0.000 min
 Exp R.T.: 5.640 min
 Response: 0
 Conc: N.D.

Instrument :
 ECD_D
 ClientSampled :

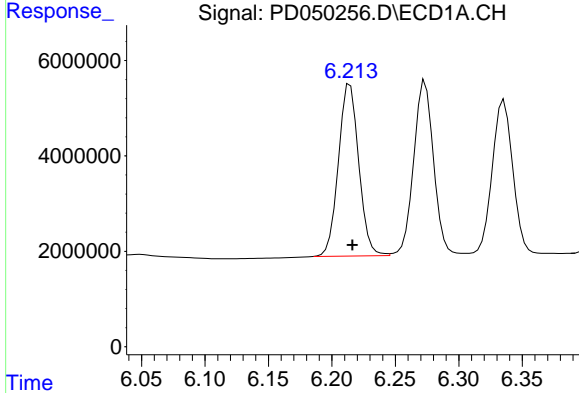
Time



#24 Chlordane-2

R.T.: 5.561 min
 Delta R.T.: 0.026 min
 Response: 1687999842
 Conc: 1372.88 ng/ml

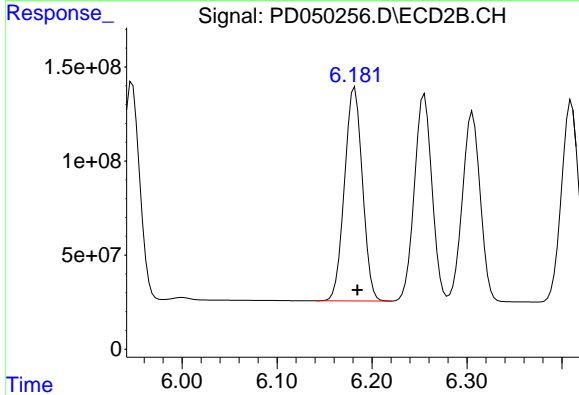
Time



#25 Chlordane-3

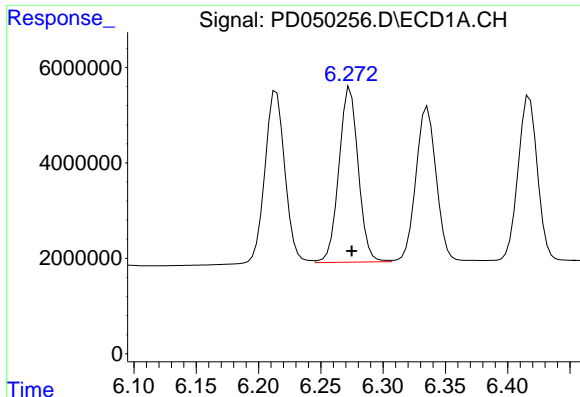
R.T.: 6.214 min
 Delta R.T.: -0.002 min
 Response: 40284848
 Conc: 459.01 ng/ml

Time



#25 Chlordane-3

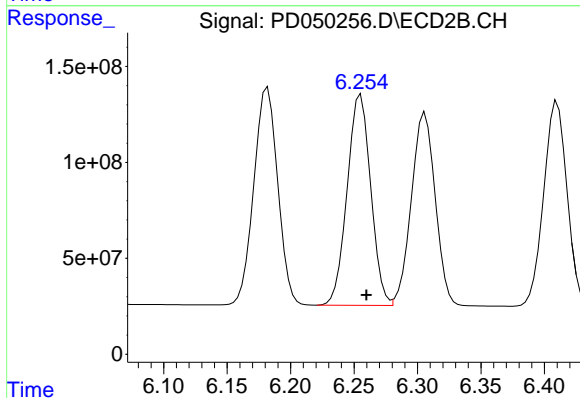
R.T.: 6.182 min
 Delta R.T.: -0.003 min
 Response: 1489232768
 Conc: 357.09 ng/ml



#26 Chlordane-4

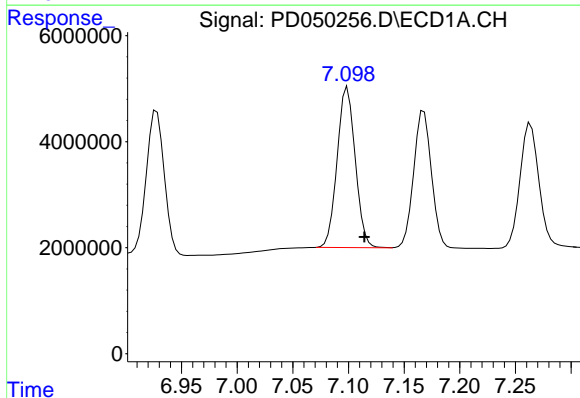
R.T.: 6.274 min
 Delta R.T.: -0.001 min
 Response: 39773277
 Conc: 549.00 ng/ml

Instrument :
 ECD_D
 ClientSampled :



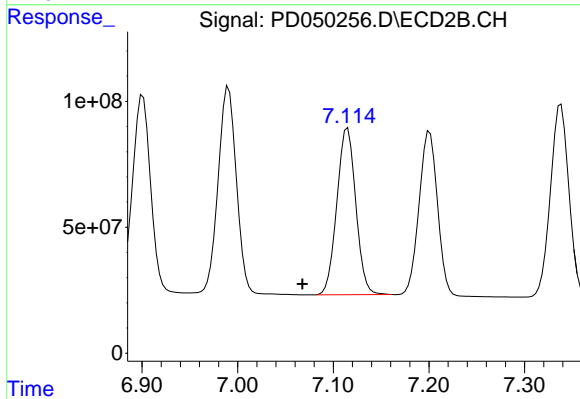
#26 Chlordane-4

R.T.: 6.255 min
 Delta R.T.: -0.004 min
 Response: 1419622939
 Conc: 302.93 ng/ml



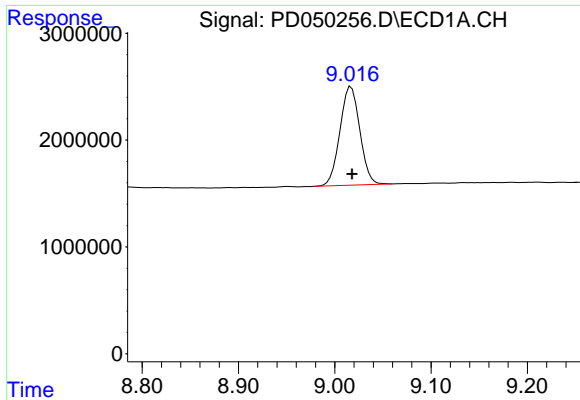
#27 Chlordane-5

R.T.: 7.099 min
 Delta R.T.: -0.015 min
 Response: 34248604
 Conc: 1125.42 ng/ml



#27 Chlordane-5

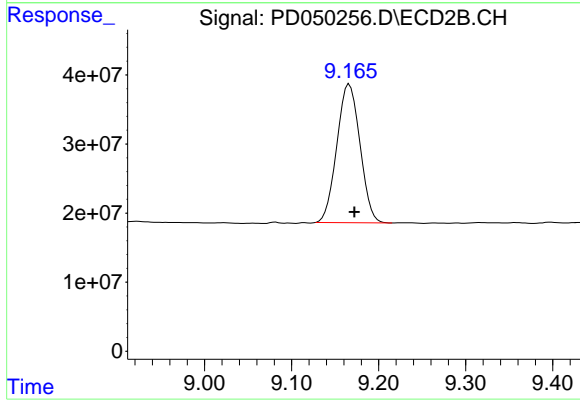
R.T.: 7.115 min
 Delta R.T.: 0.047 min
 Response: 911268146
 Conc: 983.69 ng/ml



#28 Decachlorobiphenyl

R.T.: 9.017 min
Delta R.T.: 0.000 min
Response: 13250400
Conc: 22.04 ng/ml

Instrument :
ECD_D
ClientSampleId :



#28 Decachlorobiphenyl

R.T.: 9.166 min
Delta R.T.: -0.006 min
Response: 370819156
Conc: 21.57 ng/ml