

Data Path : Z:\pestpcbsrv\HPCHEM1\ECD_D\Data\PD110824\
 Data File : PD086450.D
 Signal(s) : Signal #1: ECD1A.ch Signal #2: ECD2B.ch
 Acq On : 08 Nov 2024 12:32
 Operator : AR\AJ
 Sample : PB164745BS
 Misc :
 ALS Vial : 5 Sample Multiplier: 1

Instrument :
 ECD_D
 ClientSampleId :
 PLCS745

Integration File signal 1: autoint1.e
 Integration File signal 2: autoint2.e
 Quant Time: Nov 08 21:14:20 2024
 Quant Method : Z:\pestpcbsrv\HPCHEM1\ECD_D\Method\PD102524CLP.M
 Quant Title : GC Extractables
 QLast Update : Fri Oct 25 14:36:38 2024
 Response via : Initial Calibration
 Integrator: ChemStation

Volume Inj. : 1 µl
 Signal #1 Phase : ZB-MR2 Signal #2 Phase: ZB-MR2
 Signal #1 Info : 30M x 0.32mm x0.5 Signal #2 Info : 30M x 0.32mm x 0.25µm

	Compound	RT#1	RT#2	Resp#1	Resp#2	ng/ml	ng/ml

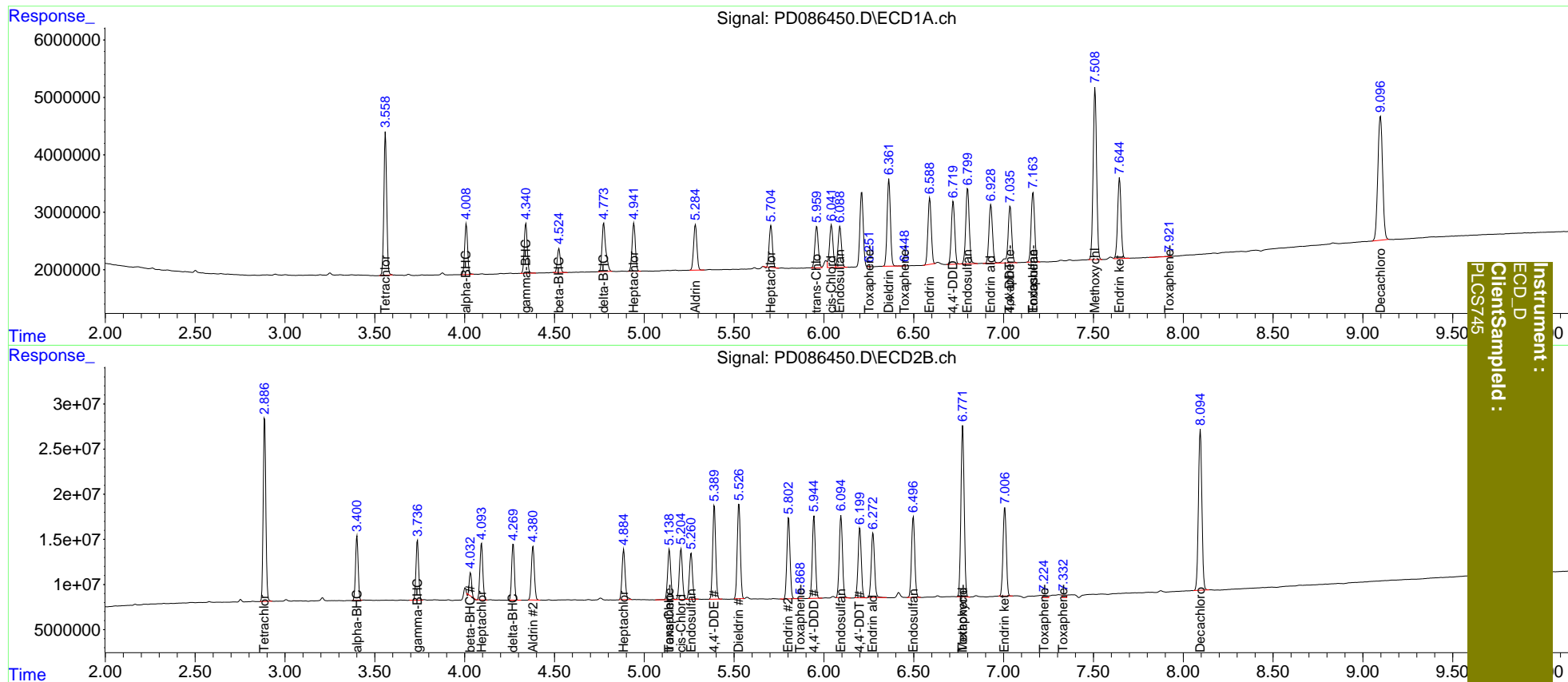
System Monitoring Compounds							
1)	SA Tetrachlo...	3.559	2.887	27238178	207.6E6	20.688	22.377
27)	SA Decachlor...	9.098	8.095	39987729	238.4E6	22.305	25.213
Target Compounds							
2)	A alpha-BHC	4.010	3.401	9835677	72454196	3.951	5.043 #
3)	MA gamma-BHC...	4.341	3.738	10041786	69941943	4.036	5.186 #
4)	MA Heptachlor	4.942	4.094	10479690	70376643	4.239	5.151
5)	MB Aldrin	5.285	4.381	10165081	70324971	4.194	5.184
6)	B beta-BHC	4.525	4.033	4754193	22938448	4.281	3.659
7)	B delta-BHC	4.775	4.271	12197282	66628640	4.712	4.748
8)	B Heptachlo...	5.705	4.886	8984727	66201775	3.932	5.279 #
9)	A Endosulfan I	6.089	5.261	9279911	62056199	4.581	5.405
10)	B trans-Chl...	5.960	5.140	9455418	68688062	4.285	5.222
11)	B cis-Chlor...	6.042	5.205	10150970	67607475	4.591	5.323
12)	B 4,4'-DDE	6.252	5.390	29868	122.3E6	<MDL	9.970 #
13)	MA Dieldrin	6.362	5.527	19259292	126.3E6	8.444	10.237
14)	MA Endrin	6.589	5.804	14847792	109.5E6	7.899	9.744
15)	B Endosulfa...	6.800	6.095	17778186	114.0E6	8.868	10.335
16)	A 4,4'-DDD	6.720	5.945	14323885	108.4E6	8.840	11.041
17)	MA 4,4'-DDT	7.037	6.200	14067761	96678821	8.438	9.421
18)	B Endrin al...	6.930	6.274	13894773	91147320	9.315	10.980
19)	B Endosulfa...	7.164	6.498	16210814	112.5E6	8.794	10.674
20)	A Methoxychlor	7.509	6.773	39788546	238.5E6	42.278	50.182
21)	B Endrin ke...	7.646	7.007	18573060	125.0E6	9.013	10.923
22)	Toxaphene-1	6.252	5.140	29868	68688062	2.154	1046.483 #
23)	Toxaphene-2	6.451	5.869	15229	136562	0.767	1.949 #
24)	Toxaphene-3	7.037f	6.773	14067761	238.5E6	263.017	1038.056 #
25)	Toxaphene-4	7.164	7.226	16210814	4293324	408.097	26.453 #
26)	Toxaphene-5	7.925	7.334	174702	4225882	6.156	36.134 #

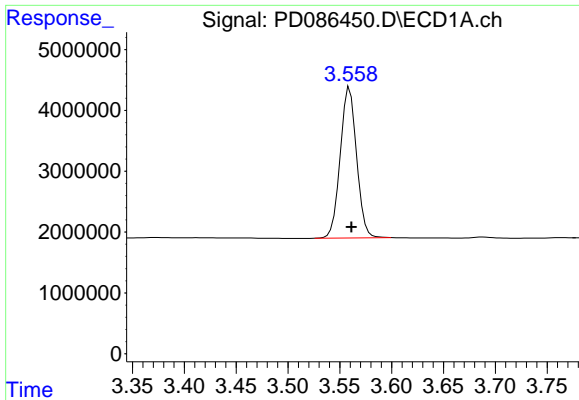
(f)=RT Delta > 1/2 Window (#)=Amounts differ by > 25% (m)=manual int.

Data Path : Z:\pestpcbsrv\HPCHEM1\ECD_D\Data\PD110824\
 Data File : PD086450.D
 Signal(s) : Signal #1: ECD1A.ch Signal #2: ECD2B.ch
 Acq On : 08 Nov 2024 12:32
 Operator : AR\AJ
 Sample : PB164745BS
 Misc :
 ALS Vial : 5 Sample Multiplier: 1

Integration File signal 1: autoint1.e
 Integration File signal 2: autoint2.e
 Quant Time: Nov 08 21:14:20 2024
 Quant Method : Z:\pestpcbsrv\HPCHEM1\ECD_D\Method\PD102524CLP.M
 Quant Title : GC Extractables
 QLast Update : Fri Oct 25 14:36:38 2024
 Response via : Initial Calibration
 Integrator: ChemStation

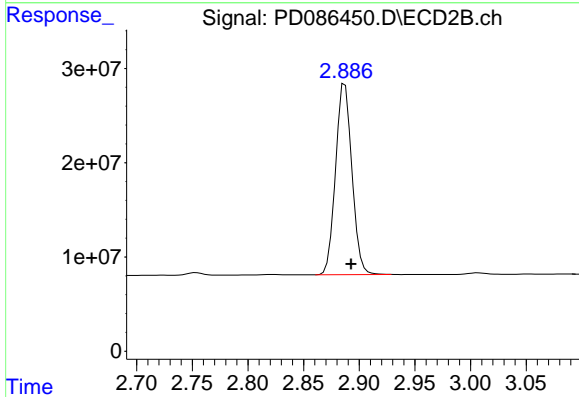
Volume Inj. : 1 µl
 Signal #1 Phase : ZB-MR1 Signal #2 Phase: ZB-MR2
 Signal #1 Info : 30M x 0.32mm x0.5 Signal #2 Info : 30M x 0.32mm x 0.25µm



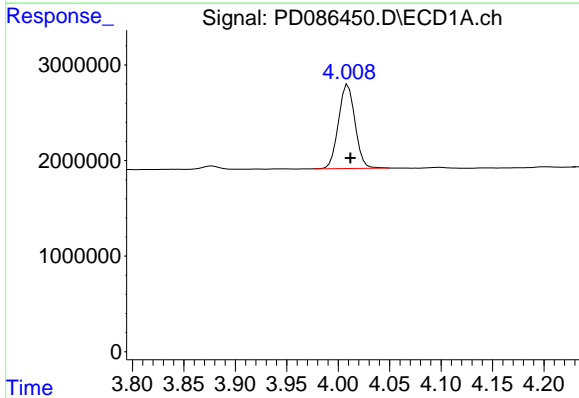


#1 Tetrachloro-m-xylene
 R.T.: 3.559 min
 Delta R.T.: -0.002 min
 Response: 27238178
 Conc: 20.69 ng/ml

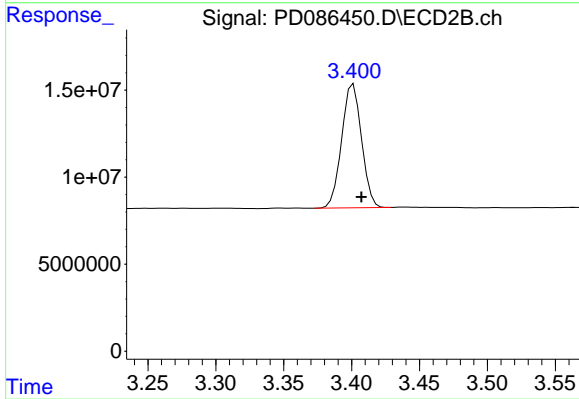
Instrument :
 ECD_D
 ClientSampleId :
 PLCS745



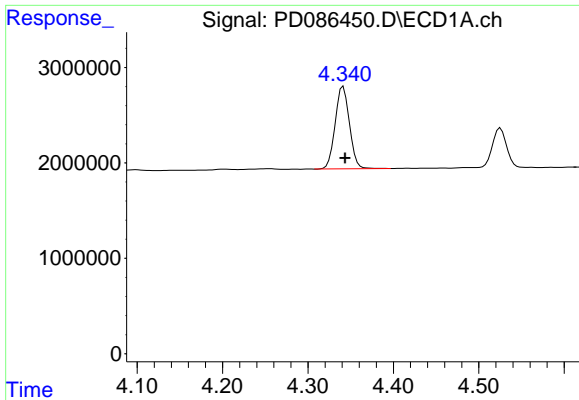
#1 Tetrachloro-m-xylene
 R.T.: 2.887 min
 Delta R.T.: -0.005 min
 Response: 207562648
 Conc: 22.38 ng/ml



#2 alpha-BHC
 R.T.: 4.010 min
 Delta R.T.: -0.002 min
 Response: 9835677
 Conc: 3.95 ng/ml

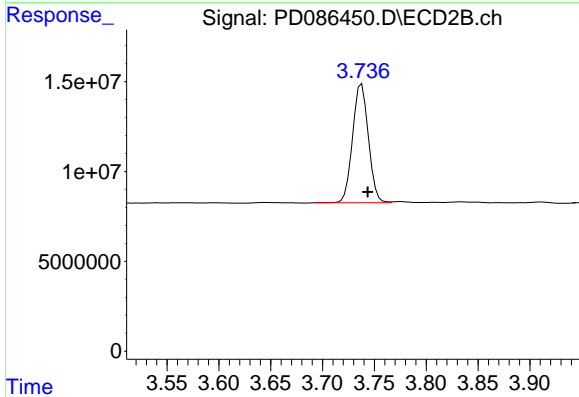


#2 alpha-BHC
 R.T.: 3.401 min
 Delta R.T.: -0.006 min
 Response: 72454196
 Conc: 5.04 ng/ml

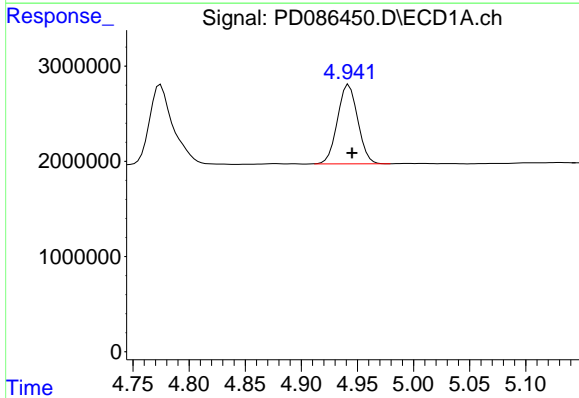


#3 gamma-BHC (Lindane)
 R.T.: 4.341 min
 Delta R.T.: -0.002 min
 Response: 10041786
 Conc: 4.04 ng/ml

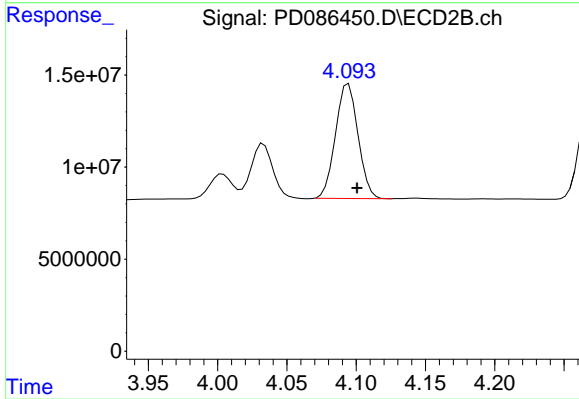
Instrument :
 ECD_D
 ClientSampleId :
 PLCS745



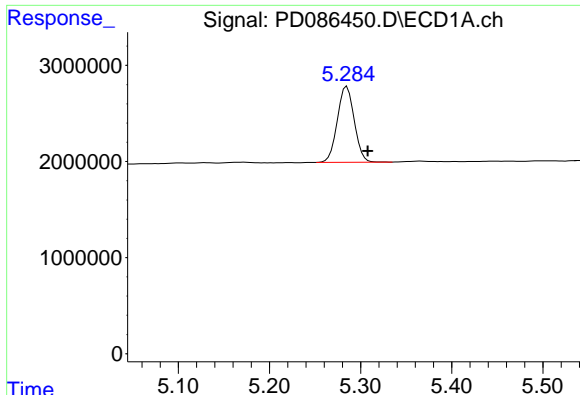
#3 gamma-BHC (Lindane)
 R.T.: 3.738 min
 Delta R.T.: -0.006 min
 Response: 69941943
 Conc: 5.19 ng/ml



#4 Heptachlor
 R.T.: 4.942 min
 Delta R.T.: -0.003 min
 Response: 10479690
 Conc: 4.24 ng/ml



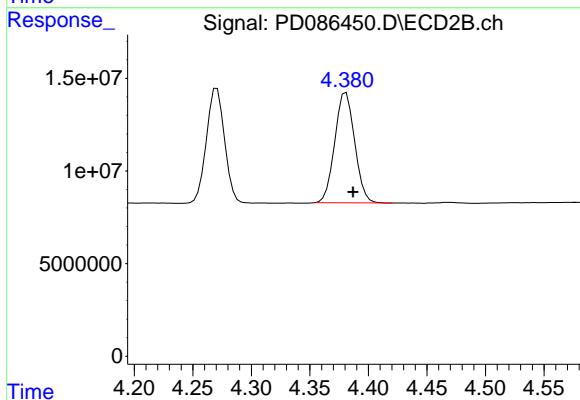
#4 Heptachlor
 R.T.: 4.094 min
 Delta R.T.: -0.006 min
 Response: 70376643
 Conc: 5.15 ng/ml



#5 Aldrin

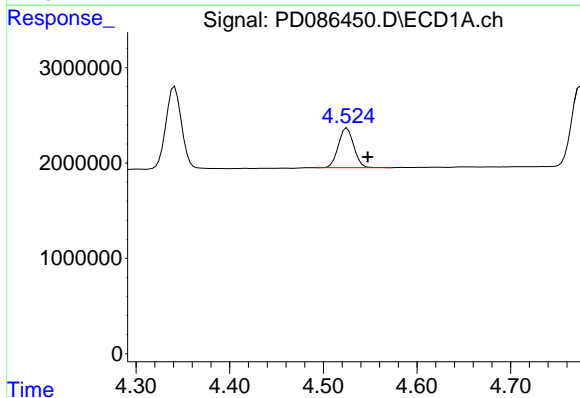
R.T.: 5.285 min
 Delta R.T.: -0.023 min
 Response: 10165081
 Conc: 4.19 ng/ml

Instrument :
 ECD_D
 ClientSampleId :
 PLCS745



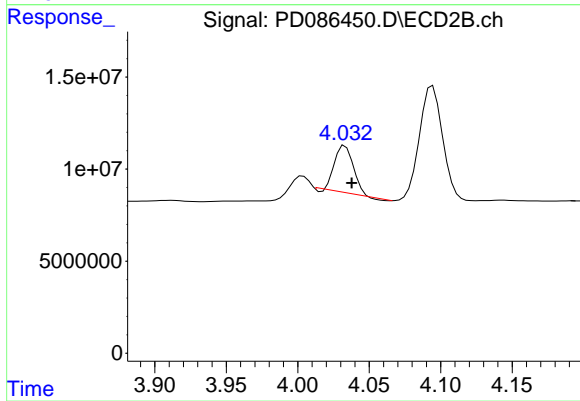
#5 Aldrin

R.T.: 4.381 min
 Delta R.T.: -0.006 min
 Response: 70324971
 Conc: 5.18 ng/ml



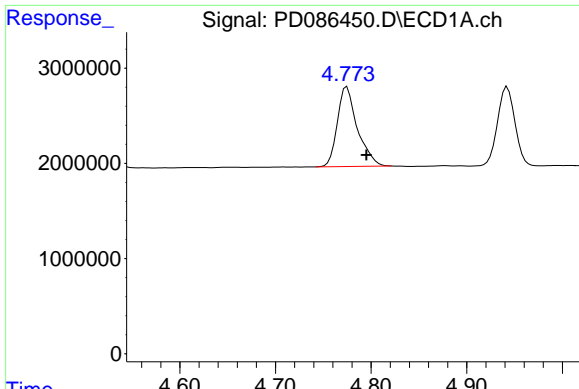
#6 beta-BHC

R.T.: 4.525 min
 Delta R.T.: -0.022 min
 Response: 4754193
 Conc: 4.28 ng/ml



#6 beta-BHC

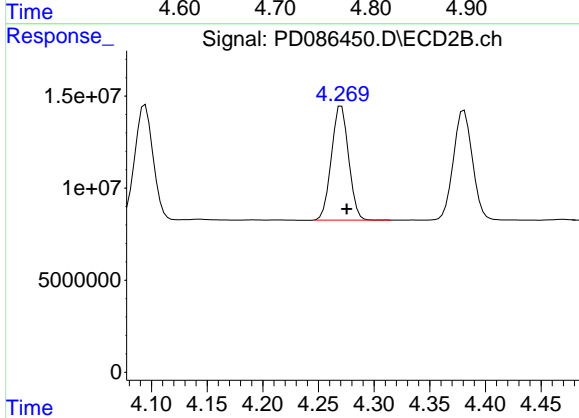
R.T.: 4.033 min
 Delta R.T.: -0.005 min
 Response: 22938448
 Conc: 3.66 ng/ml



#7 delta-BHC

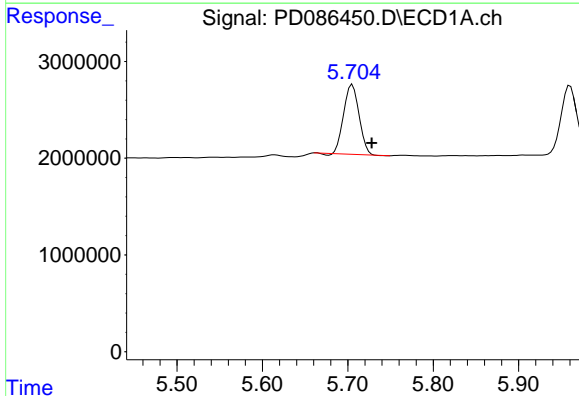
R.T.: 4.775 min
 Delta R.T.: -0.020 min
 Response: 12197282
 Conc: 4.71 ng/ml

Instrument :
 ECD_D
 ClientSampleId :
 PLCS745



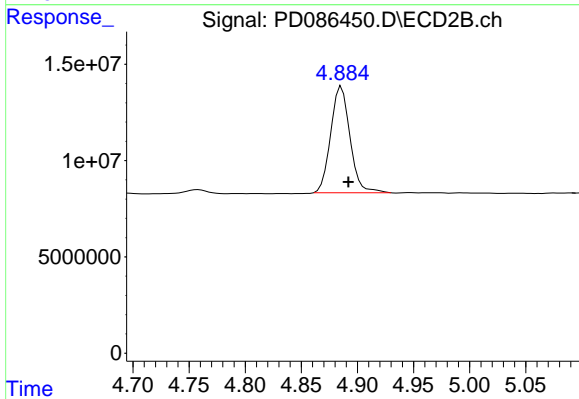
#7 delta-BHC

R.T.: 4.271 min
 Delta R.T.: -0.005 min
 Response: 66628640
 Conc: 4.75 ng/ml



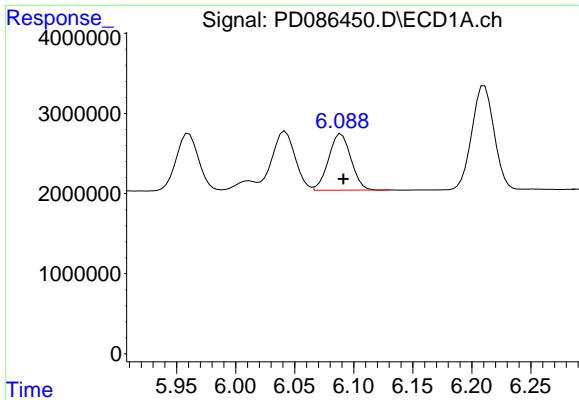
#8 Heptachlor epoxide

R.T.: 5.705 min
 Delta R.T.: -0.023 min
 Response: 8984727
 Conc: 3.93 ng/ml



#8 Heptachlor epoxide

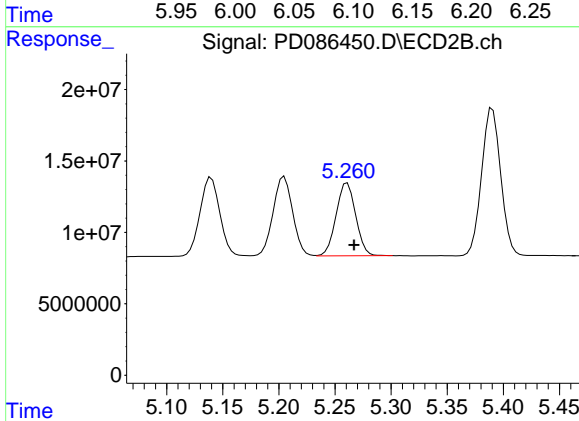
R.T.: 4.886 min
 Delta R.T.: -0.006 min
 Response: 66201775
 Conc: 5.28 ng/ml



#9 Endosulfan I

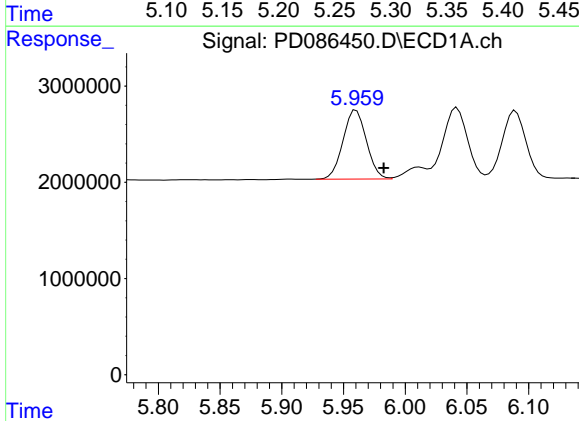
R.T.: 6.089 min
 Delta R.T.: -0.002 min
 Response: 9279911
 Conc: 4.58 ng/ml

Instrument :
 ECD_D
 ClientSampleId :
 PLCS745



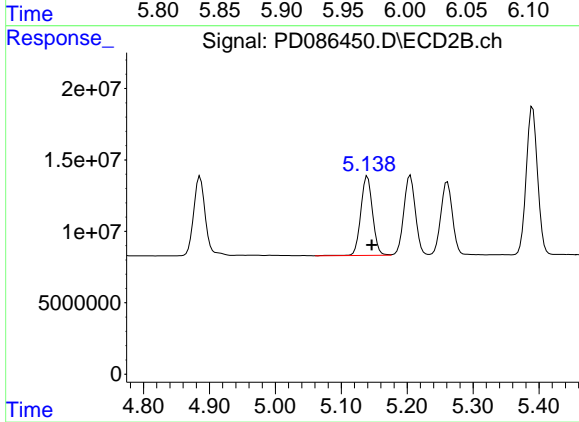
#9 Endosulfan I

R.T.: 5.261 min
 Delta R.T.: -0.006 min
 Response: 62056199
 Conc: 5.40 ng/ml



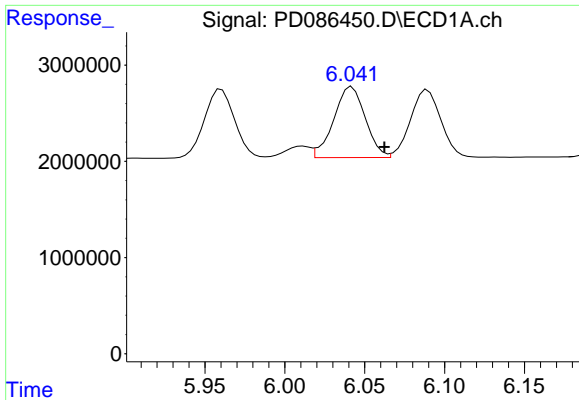
#10 trans-Chlordane

R.T.: 5.960 min
 Delta R.T.: -0.022 min
 Response: 9455418
 Conc: 4.29 ng/ml



#10 trans-Chlordane

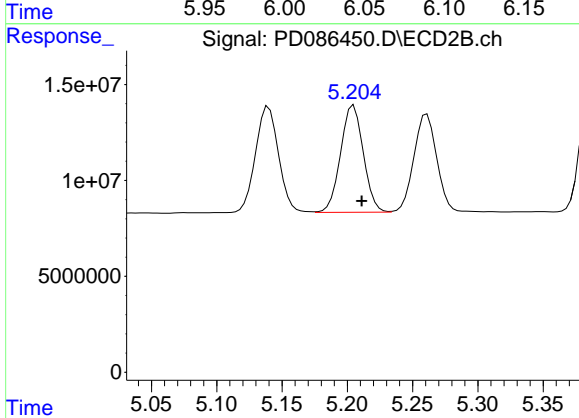
R.T.: 5.140 min
 Delta R.T.: -0.006 min
 Response: 68688062
 Conc: 5.22 ng/ml



#11 cis-Chlordane

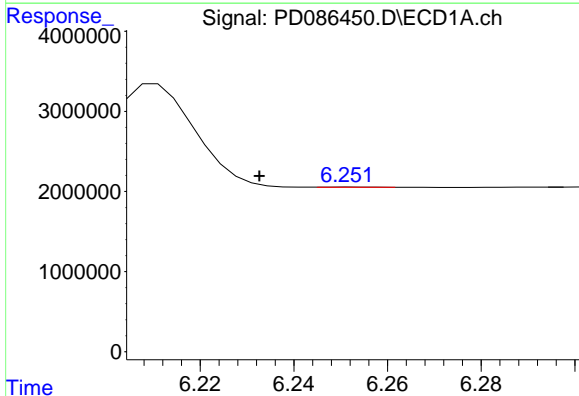
R.T.: 6.042 min
 Delta R.T.: -0.020 min
 Response: 10150970
 Conc: 4.59 ng/ml

Instrument :
 ECD_D
 ClientSampleId :
 PLCS745



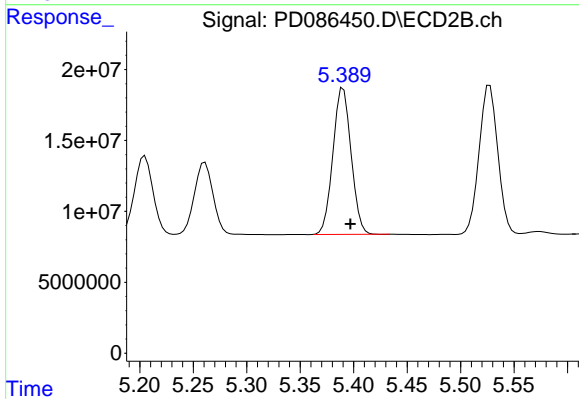
#11 cis-Chlordane

R.T.: 5.205 min
 Delta R.T.: -0.006 min
 Response: 67607475
 Conc: 5.32 ng/ml



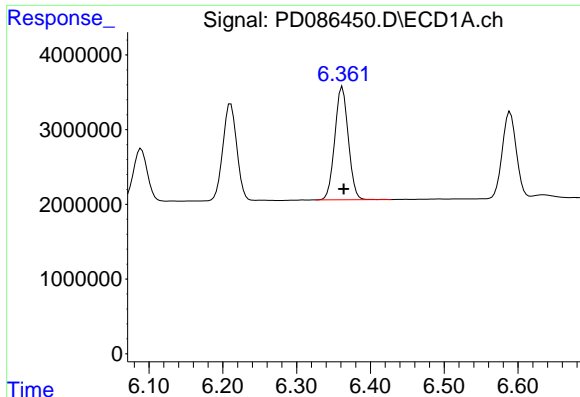
#12 4,4'-DDE

R.T.: 6.252 min
 Delta R.T.: 0.020 min
 Response: 29868
 Conc: N.D.



#12 4,4'-DDE

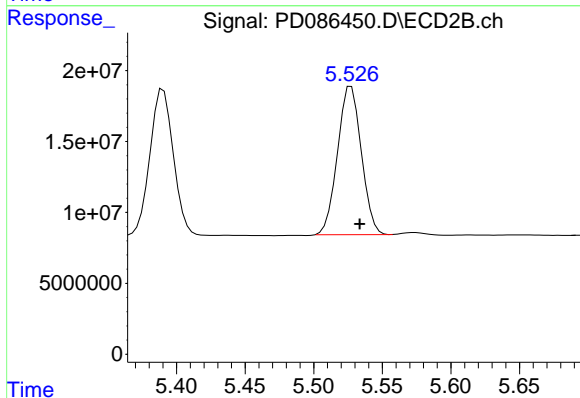
R.T.: 5.390 min
 Delta R.T.: -0.007 min
 Response: 122250250
 Conc: 9.97 ng/ml



#13 Dieldrin

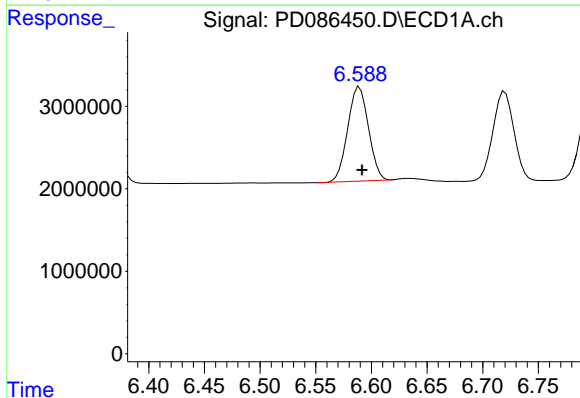
R.T.: 6.362 min
 Delta R.T.: -0.002 min
 Response: 19259292
 Conc: 8.44 ng/ml

Instrument :
 ECD_D
 ClientSampleId :
 PLCS745



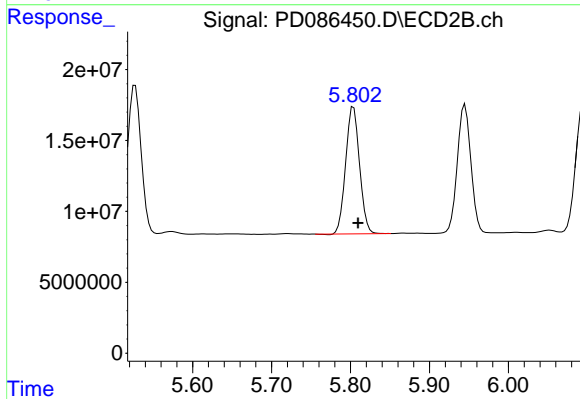
#13 Dieldrin

R.T.: 5.527 min
 Delta R.T.: -0.006 min
 Response: 126299956
 Conc: 10.24 ng/ml



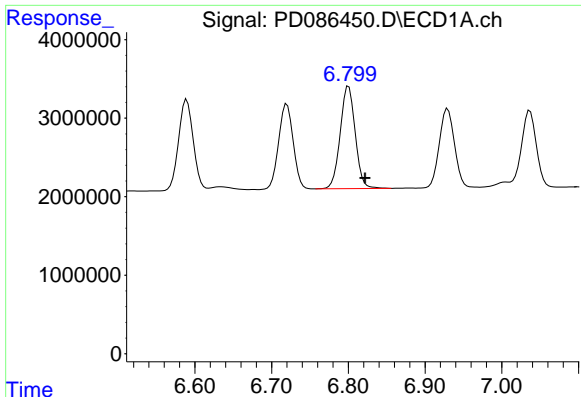
#14 Endrin

R.T.: 6.589 min
 Delta R.T.: -0.002 min
 Response: 14847792
 Conc: 7.90 ng/ml



#14 Endrin

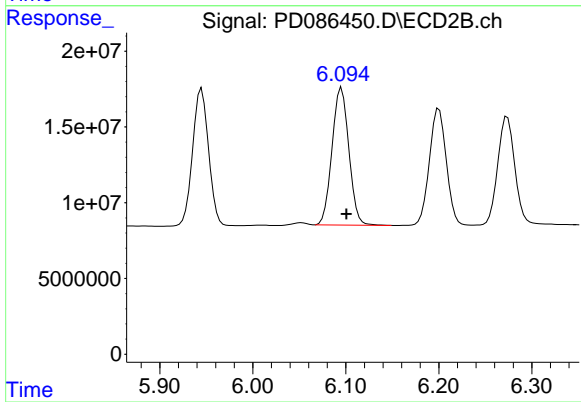
R.T.: 5.804 min
 Delta R.T.: -0.006 min
 Response: 109501046
 Conc: 9.74 ng/ml



#15 Endosulfan II

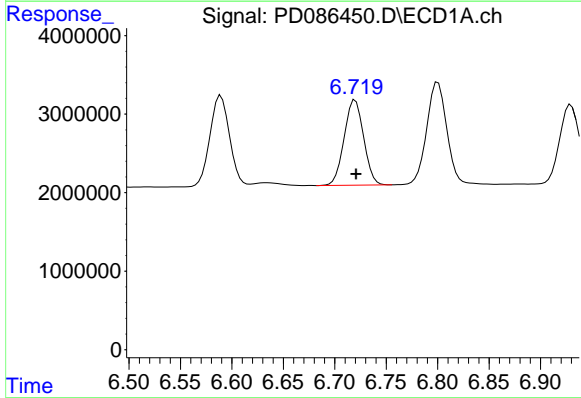
R.T.: 6.800 min
 Delta R.T.: -0.021 min
 Response: 17778186
 Conc: 8.87 ng/ml

Instrument :
 ECD_D
 ClientSampleId :
 PLCS745



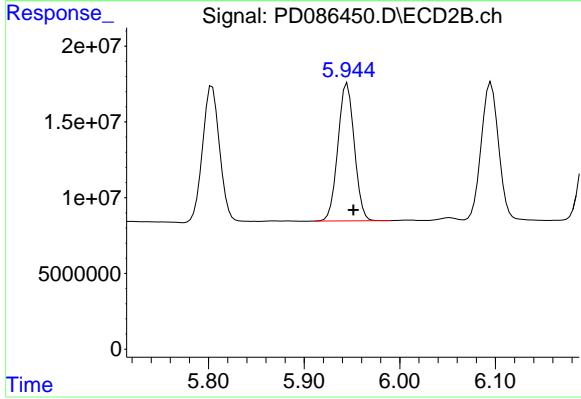
#15 Endosulfan II

R.T.: 6.095 min
 Delta R.T.: -0.005 min
 Response: 114021139
 Conc: 10.33 ng/ml



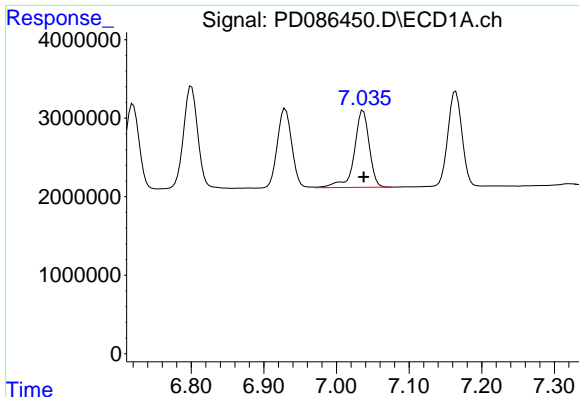
#16 4,4'-DDD

R.T.: 6.720 min
 Delta R.T.: 0.000 min
 Response: 14323885
 Conc: 8.84 ng/ml



#16 4,4'-DDD

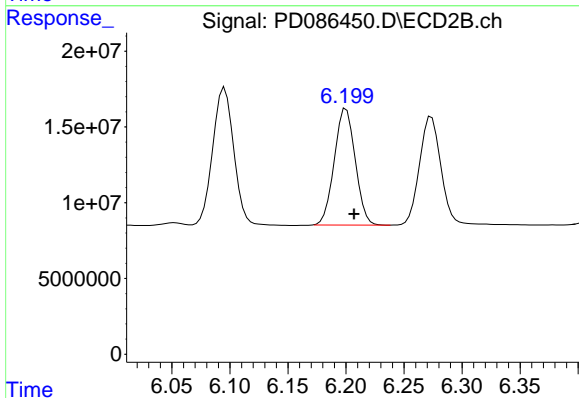
R.T.: 5.945 min
 Delta R.T.: -0.006 min
 Response: 108385911
 Conc: 11.04 ng/ml



#17 4,4'-DDT

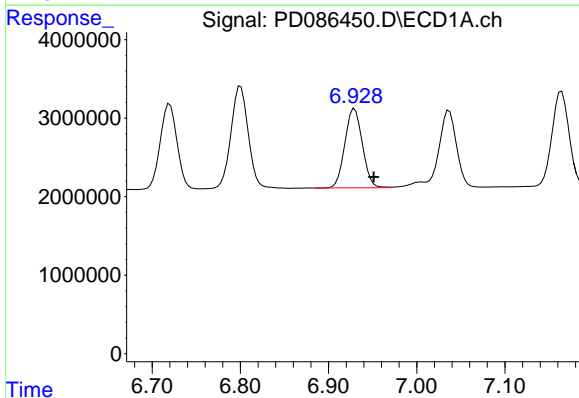
R.T.: 7.037 min
 Delta R.T.: 0.000 min
 Response: 14067761
 Conc: 8.44 ng/ml

Instrument :
 ECD_D
 ClientSampleId :
 PLCS745



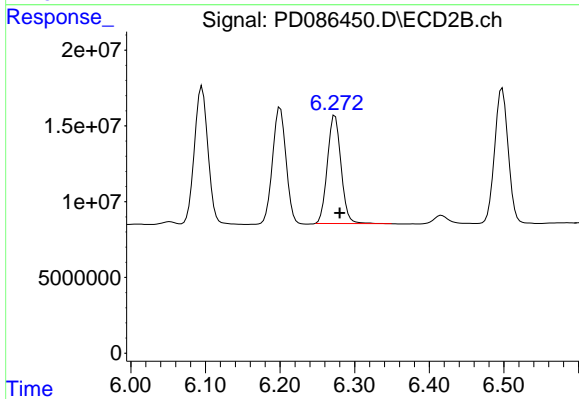
#17 4,4'-DDT

R.T.: 6.200 min
 Delta R.T.: -0.007 min
 Response: 96678821
 Conc: 9.42 ng/ml



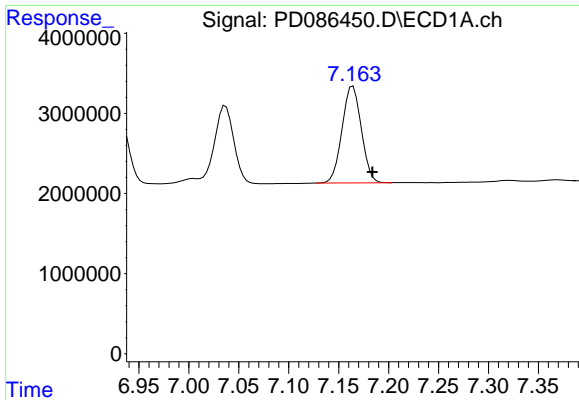
#18 Endrin aldehyde

R.T.: 6.930 min
 Delta R.T.: -0.022 min
 Response: 13894773
 Conc: 9.31 ng/ml



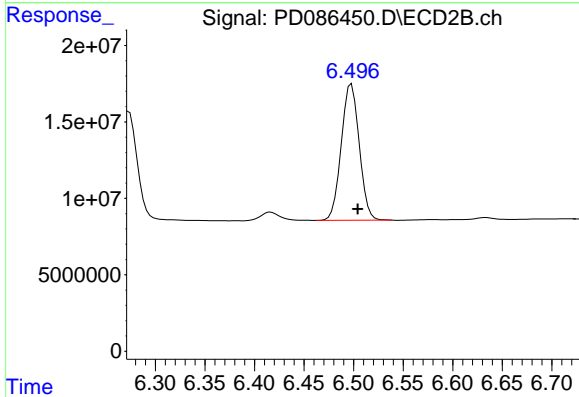
#18 Endrin aldehyde

R.T.: 6.274 min
 Delta R.T.: -0.006 min
 Response: 91147320
 Conc: 10.98 ng/ml

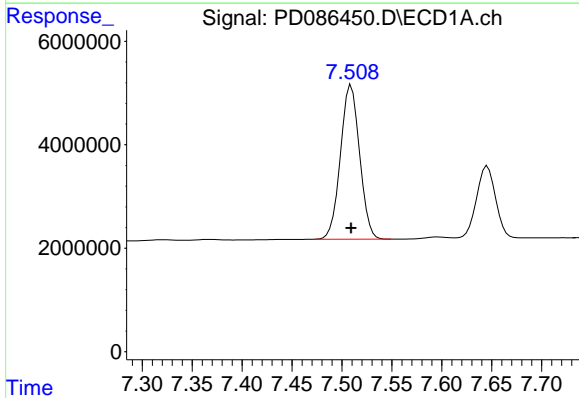


#19 Endosulfan Sulfate
 R.T.: 7.164 min
 Delta R.T.: -0.019 min
 Response: 16210814
 Conc: 8.79 ng/ml

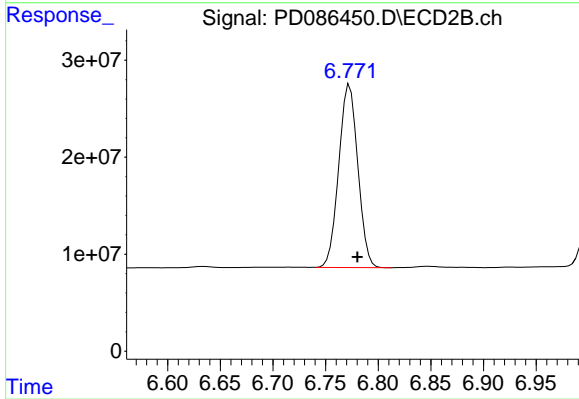
Instrument :
 ECD_D
 ClientSampleId :
 PLCS745



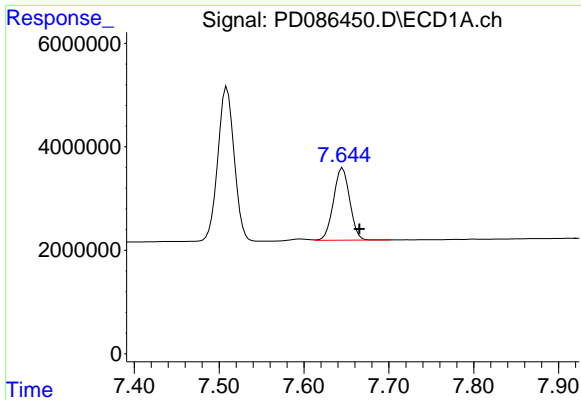
#19 Endosulfan Sulfate
 R.T.: 6.498 min
 Delta R.T.: -0.006 min
 Response: 112521941
 Conc: 10.67 ng/ml



#20 Methoxychlor
 R.T.: 7.509 min
 Delta R.T.: 0.000 min
 Response: 39788546
 Conc: 42.28 ng/ml



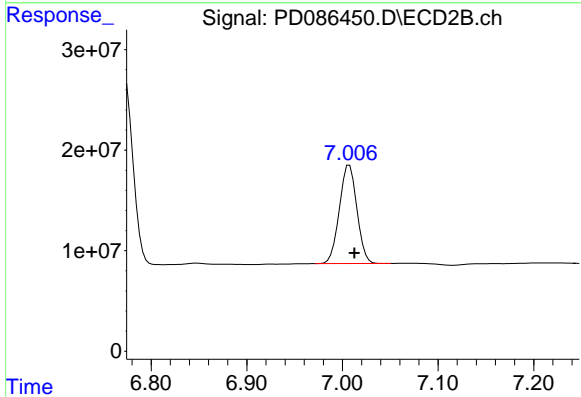
#20 Methoxychlor
 R.T.: 6.773 min
 Delta R.T.: -0.007 min
 Response: 238529680
 Conc: 50.18 ng/ml



#21 Endrin ketone

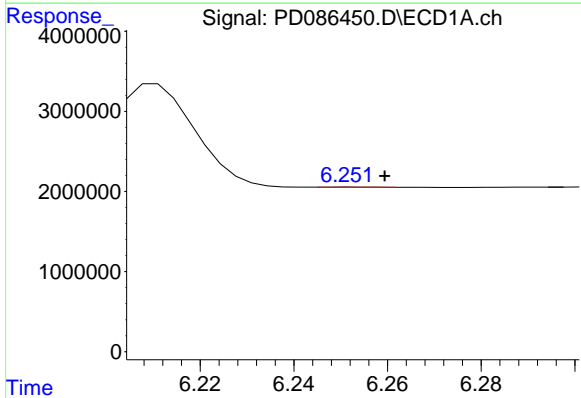
R.T.: 7.646 min
 Delta R.T.: -0.020 min
 Response: 18573060
 Conc: 9.01 ng/ml

Instrument :
 ECD_D
 ClientSampleId :
 PLCS745



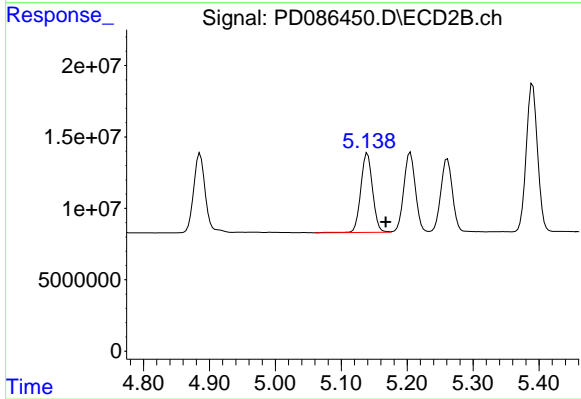
#21 Endrin ketone

R.T.: 7.007 min
 Delta R.T.: -0.005 min
 Response: 124992841
 Conc: 10.92 ng/ml



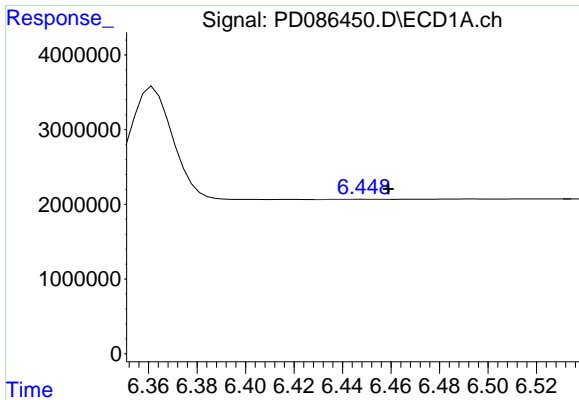
#22 Toxaphene-1

R.T.: 6.252 min
 Delta R.T.: -0.007 min
 Response: 29868
 Conc: 2.15 ng/ml



#22 Toxaphene-1

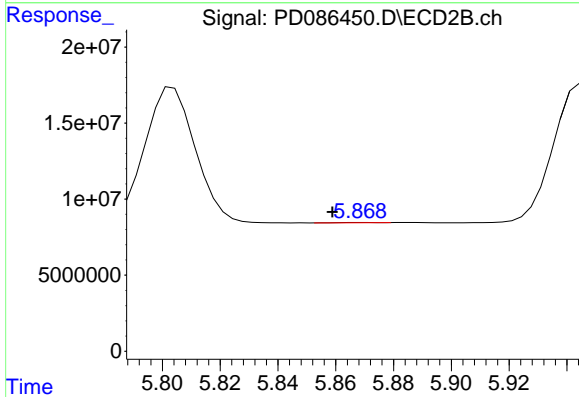
R.T.: 5.140 min
 Delta R.T.: -0.028 min
 Response: 68688062
 Conc: 1046.48 ng/ml



#23 Toxaphene-2

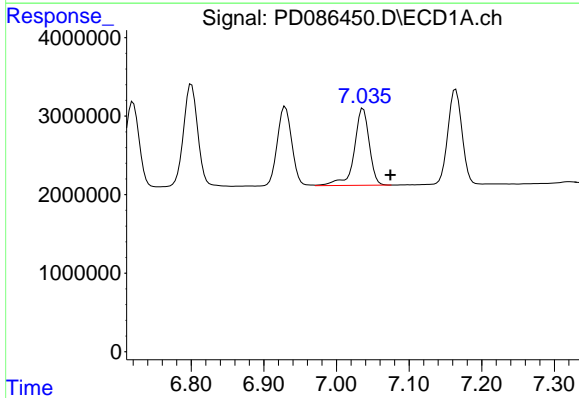
R.T.: 6.451 min
 Delta R.T.: -0.008 min
 Response: 15229
 Conc: 0.77 ng/ml

Instrument :
 ECD_D
 ClientSampleId :
 PLCS745



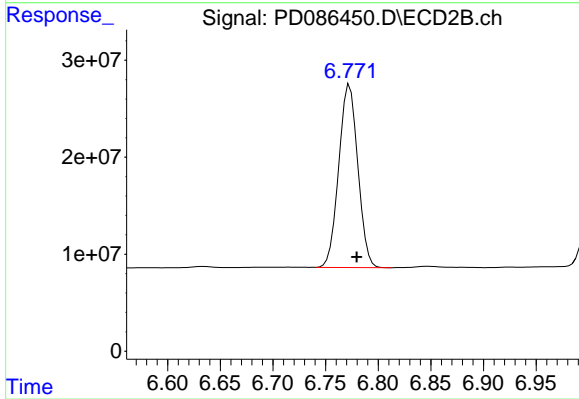
#23 Toxaphene-2

R.T.: 5.869 min
 Delta R.T.: 0.010 min
 Response: 136562
 Conc: 1.95 ng/ml



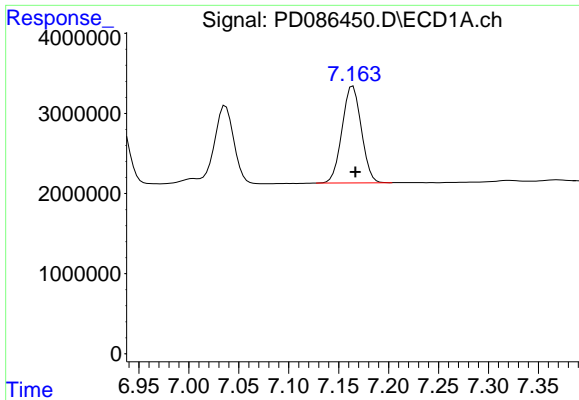
#24 Toxaphene-3

R.T.: 7.037 min
 Delta R.T.: -0.038 min
 Response: 14067761
 Conc: 263.02 ng/ml



#24 Toxaphene-3

R.T.: 6.773 min
 Delta R.T.: -0.007 min
 Response: 238529680
 Conc: 1038.06 ng/ml

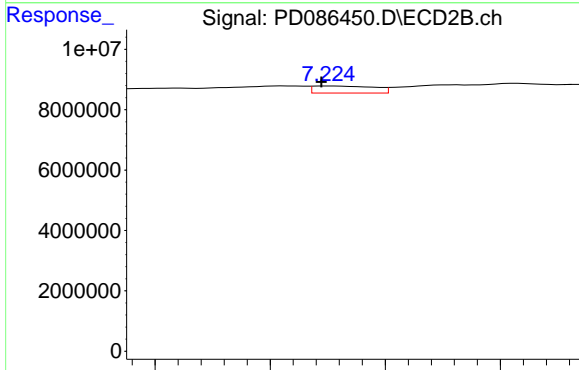


#25 Toxaphene-4

R.T.: 7.164 min
 Delta R.T.: -0.002 min
 Response: 16210814
 Conc: 408.10 ng/ml

Instrument :
 ECD_D
 ClientSampleId :
 PLCS745

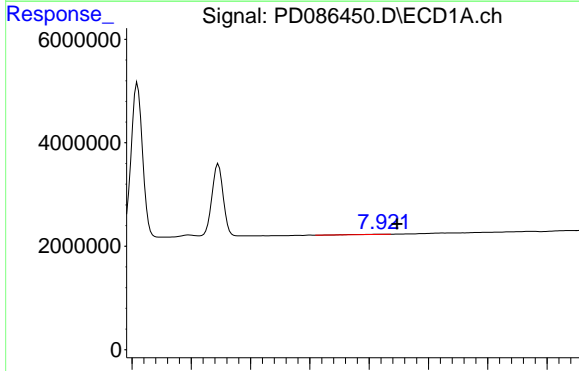
Time 6.95 7.00 7.05 7.10 7.15 7.20 7.25 7.30 7.35



#25 Toxaphene-4

R.T.: 7.226 min
 Delta R.T.: 0.003 min
 Response: 4293324
 Conc: 26.45 ng/ml

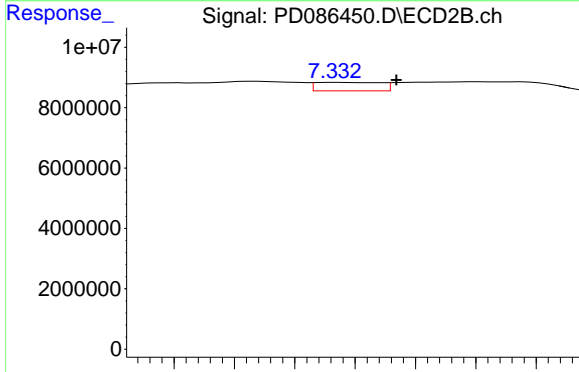
Time 7.15 7.20 7.25 7.30



#26 Toxaphene-5

R.T.: 7.925 min
 Delta R.T.: -0.023 min
 Response: 174702
 Conc: 6.16 ng/ml

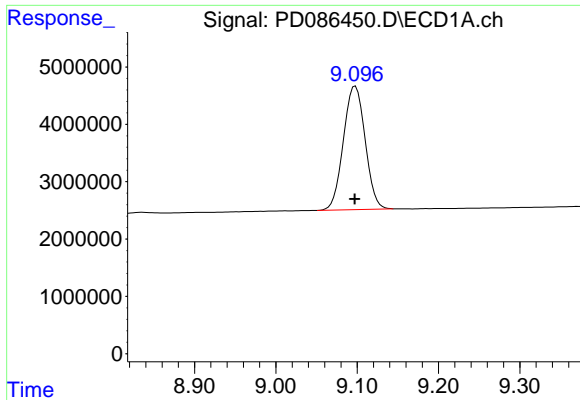
Time 7.50 7.60 7.70 7.80 7.90 8.00 8.10 8.20



#26 Toxaphene-5

R.T.: 7.334 min
 Delta R.T.: -0.020 min
 Response: 4225882
 Conc: 36.13 ng/ml

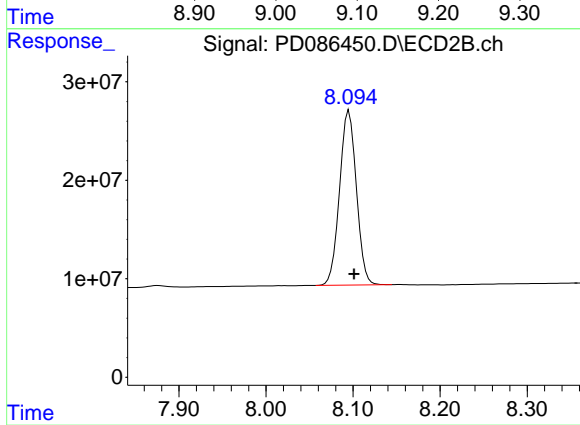
Time 7.28 7.30 7.32 7.34 7.36 7.38 7.40



#27 Decachlorobiphenyl

R.T.: 9.098 min
 Delta R.T.: 0.000 min
 Response: 39987729
 Conc: 22.31 ng/ml

Instrument :
 ECD_D
 ClientSampleId :
 PLCS745



#27 Decachlorobiphenyl

R.T.: 8.095 min
 Delta R.T.: -0.006 min
 Response: 238405623
 Conc: 25.21 ng/ml