

Data Path : Z:\pestpcbsrv\HPCHEM1\ECD_D\Data\PD110824\
 Data File : PD086450.D
 Signal(s) : Signal #1: ECD1A.ch Signal #2: ECD2B.ch
 Acq On : 08 Nov 2024 12:32
 Operator : AR\AJ
 Sample : PB164745BS
 Misc :
 ALS Vial : 5 Sample Multiplier: 1

Instrument :
 ECD_D
 ClientSampleId :
 PLCS745

Manual Integrations
APPROVED

Reviewed By :Yogesh
 Patel

Integration File signal 1: autoint1.e
 Integration File signal 2: autoint2.e
 Quant Time: Nov 08 21:14:20 2024
 Quant Method : Z:\pestpcbsrv\HPCHEM1\ECD_D\Method\PD102524CLP.M
 Quant Title : GC Extractables
 QLast Update : Fri Oct 25 14:36:38 2024
 Response via : Initial Calibration
 Integrator: ChemStation

11/11/2024
 Supervised By :mohammad
 ahmed

Volume Inj. : 1 µl
 Signal #1 Phase : ZB-MR2 Signal #2 Phase: ZB-MR2
 Signal #1 Info : 30M x 0.32mm x0.5 Signal #2 Info : 30M x 0.32mm x 0.25µm

Compound	RT#1	RT#2	Resp#1	Resp#2	ng/ml	ng/ml	11/11/2024
----------	------	------	--------	--------	-------	-------	------------

System Monitoring Compounds

1) SA Tetrachlo...	3.559	2.887	27238178	207.6E6	20.688	22.377	
2) SA Decachlor...	9.098	8.095	39987729	238.4E6	22.305	25.213	

Target Compounds

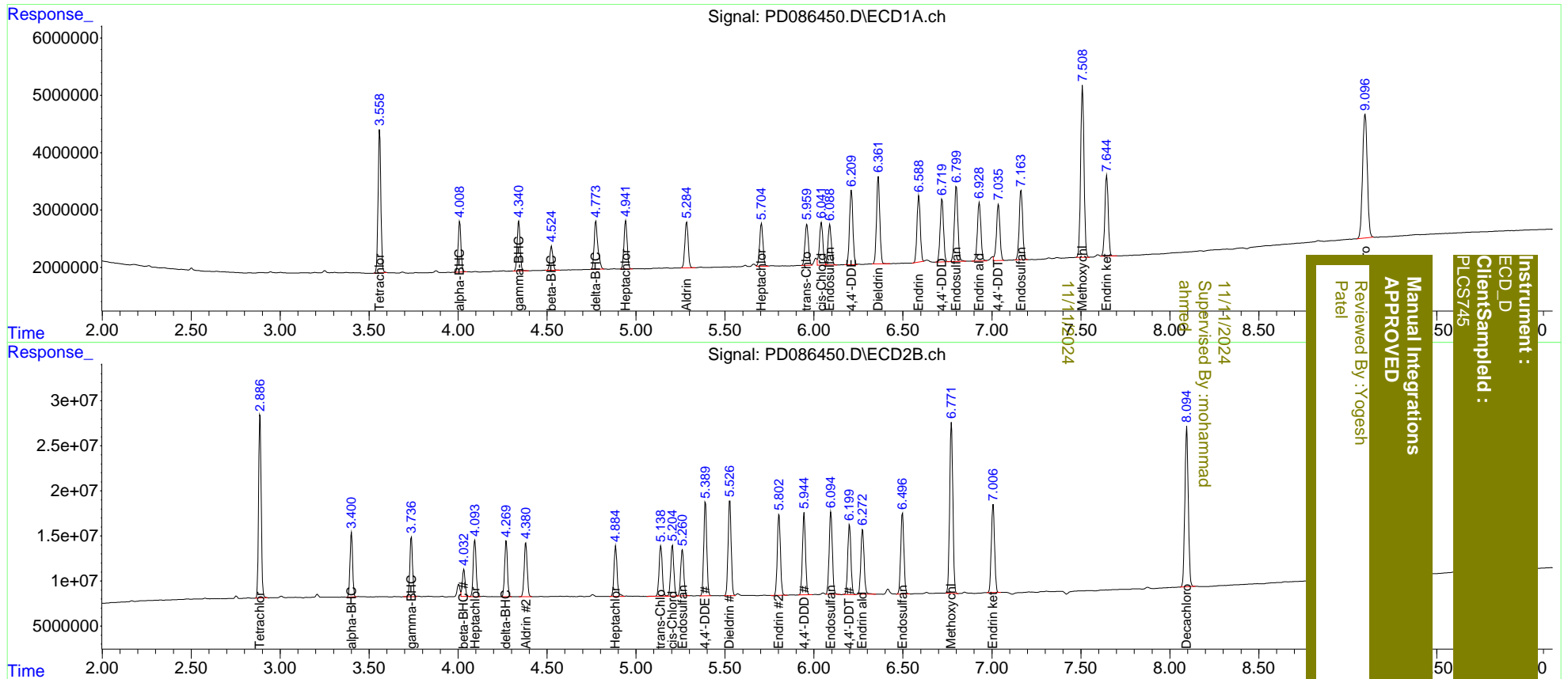
2) A alpha-BHC	4.010	3.401	9835677	72454196	3.951	5.043 #	
3) MA gamma-BHC...	4.341	3.738	10041786	69941943	4.036	5.186 #	
4) MA Heptachlor	4.942	4.093	10479690	71146268	4.239	5.208m	
5) MB Aldrin	5.285	4.380	10165081	70912868	4.194	5.227m	
6) B beta-BHC	4.525	4.032	4754193	32995658	4.281	5.263m	
7) B delta-BHC	4.775	4.269	12197282	67015230	4.712	4.776m	
8) B Heptachlo...	5.704	4.884	9802125	68189115	4.289m	5.438m#	
9) A Endosulfan I	6.089	5.261	9279911	62056199	4.581	5.405	
10) B trans-Chl...	5.960	5.140	9455418	68688062	4.285	5.222	
11) B cis-Chlor...	6.042	5.205	10150970	67607475	4.591	5.323	
12) B 4,4'-DDE	6.209	5.389	17097849	122.7E6	8.005m	10.004m	
13) MA Dieldrin	6.362	5.526	19259292	128.1E6	8.444	10.386m	
14) MA Endrin	6.589	5.804	14847792	109.5E6	7.899	9.744	
15) B Endosulfa...	6.800	6.095	17778186	114.0E6	8.868	10.335	
16) A 4,4'-DDD	6.720	5.945	14323885	108.4E6	8.840	11.041	
17) MA 4,4'-DDT	7.035	6.199	13200213	97712143	7.917m	9.522m	
18) B Endrin al...	6.930	6.274	13894773	91147320	9.315	10.980	
19) B Endosulfa...	7.164	6.498	16210814	112.5E6	8.794	10.674	
20) A Methoxychlor	7.509	6.773	39788546	238.5E6	42.278	50.182	
21) B Endrin ke...	7.646	7.007	18573060	125.0E6	9.013	10.923	

(f)=RT Delta > 1/2 Window (#)=Amounts differ by > 25% (m)=manual int.

Data Path : Z:\pestpcbsrv\HPCHEM1\ECD_D\Data\PD110824\
 Data File : PD086450.D
 Signal(s) : Signal #1: ECD1A.ch Signal #2: ECD2B.ch
 Acq On : 08 Nov 2024 12:32
 Operator : AR\AJ
 Sample : PB164745BS
 Misc :
 ALS Vial : 5 Sample Multiplier: 1

Integration File signal 1: autoint1.e
 Integration File signal 2: autoint2.e
 Quant Time: Nov 08 21:14:20 2024
 Quant Method : Z:\pestpcbsrv\HPCHEM1\ECD_D\Method\PD102524CLP.M
 Quant Title : GC Extractables
 QLast Update : Fri Oct 25 14:36:38 2024
 Response via : Initial Calibration
 Integrator: ChemStation

Volume Inj. : 1 µl
 Signal #1 Phase : ZB-MR1 Signal #2 Phase: ZB-MR2
 Signal #1 Info : 30M x 0.32mm x0.5 Signal #2 Info : 30M x 0.32mm x 0.25µm



Instrument :
 ECD_D
 Client Sampled :
 PLCST45

Reviewed By : Yogesh Patel

Manual Integrations
 APPROVED

Supervised By : mohammad ahmed
 11/11/2024