

Data Path : Z:\pestpcbsrv\HPCHEM1\ECD_D\Data\PD110922\
 Data File : PD072875.D
 Signal(s) : Signal #1: ECD1A.ch Signal #2: ECD2B.ch
 Acq On : 09 Nov 2022 09:45
 Operator : AR\AJ
 Sample : PEM
 Misc :
 ALS Vial : 3 Sample Multiplier: 1

Instrument :
 ECD_D
ClientSampleId :
 PEM

Manual Integrations
APPROVED

Reviewed By :Abdul Mirza 11/10/2022
 Supervised By :Ankita Jodhani 11/10/2022

Integration File signal 1: autoint1.e
 Integration File signal 2: autoint2.e
 Quant Time: Nov 09 20:50:15 2022
 Quant Method : Z:\pestpcbsrv\HPCHEM1\ECD_D\Method\PD102822.M
 Quant Title : GC Extractables
 QLast Update : Fri Oct 28 15:29:46 2022
 Response via : Initial Calibration
 Integrator: ChemStation

Volume Inj. : 2 µl
 Signal #1 Phase : ZB-MR2 Signal #2 Phase: ZB-MR1
 Signal #1 Info : 30M x 0.32mm x0.2 Signal #2 Info : 30M x 0.32mm x 0.50µm

Compound	RT#1	RT#2	Resp#1	Resp#2	ng/ml	ng/ml

System Monitoring Compounds						
1) SA Tetrachlo...	2.700	3.461	43908387	851.4E6	21.409	24.665
28) SA Decachlor...	7.829	8.912	44139077	226.3E6	22.957	23.613
Target Compounds						
2) A alpha-BHC	3.204	3.924	33145417	604.3E6	10.021	12.810 #
3) MA gamma-BHC...	3.534	4.258	30475002	496.2E6	10.131	13.502 #
6) B beta-BHC	3.836	4.473	15542223	184.2E6	12.148	13.100
12) B 4,4'-DDE	5.143	6.103	402810	3765982	0.164m	0.227m#
14) MA Endrin	5.562	6.488	121.3E6	546.9E6	56.150	39.370 #
16) A 4,4'-DDD	5.709	6.623	3283490	39573067	1.605	2.873 #
17) MA 4,4'-DDT	5.958	6.929	230.5E6	1387.7E6	116.455	103.153
18) B Endrin al...	6.042	6.849	3415411	18236424	2.052	1.694
20) A Methoxychlor	6.541	7.409	308.2E6	1627.7E6	272.970	251.429
21) B Endrin ke...	6.774	7.572	9178000	51422195	3.674	3.635

(f)=RT Delta > 1/2 Window (#)=Amounts differ by > 25% (m)=manual int.

Data Path : Z:\pestpcbsrv\HPCHEM1\ECD_D\Data\PD110922\
 Data File : PD072875.D
 Signal(s) : Signal #1: ECD1A.ch Signal #2: ECD2B.ch
 Acq On : 09 Nov 2022 09:45
 Operator : AR\AJ
 Sample : PEM
 Misc :
 ALS Vial : 3 Sample Multiplier: 1

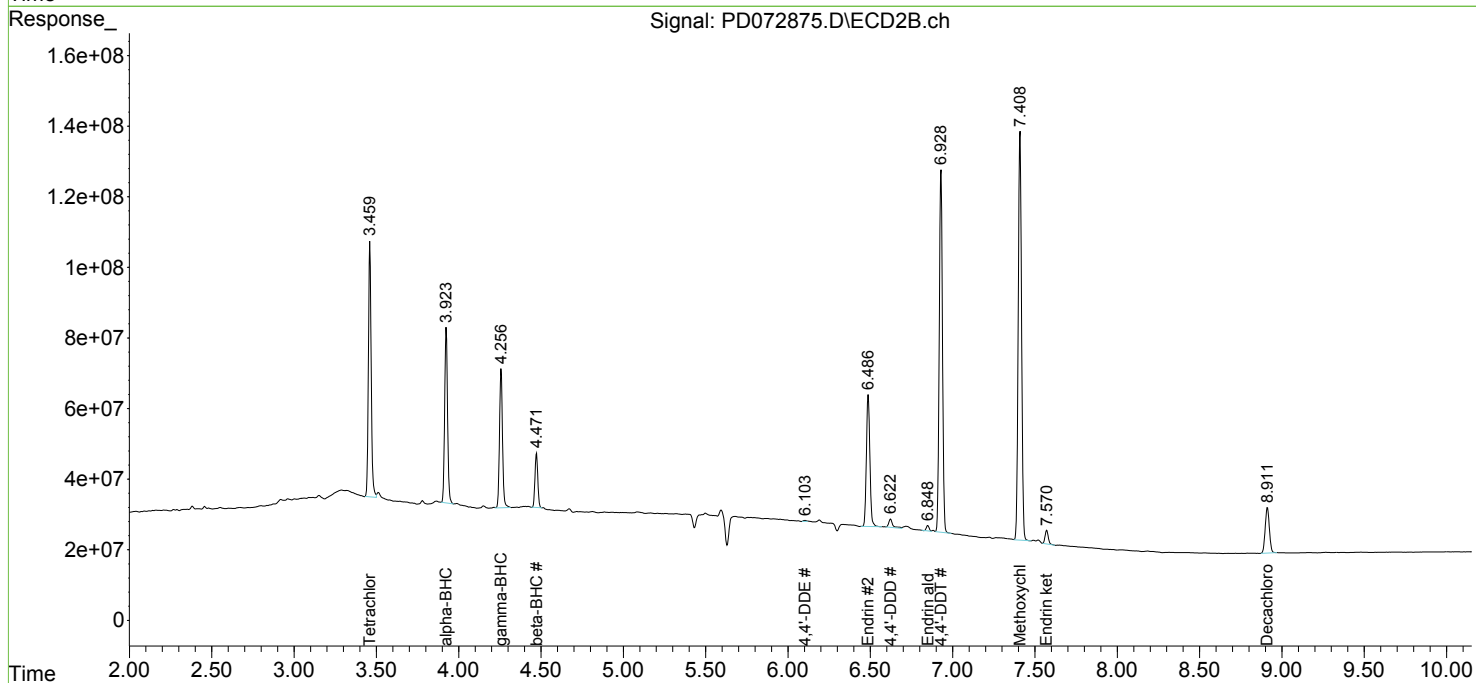
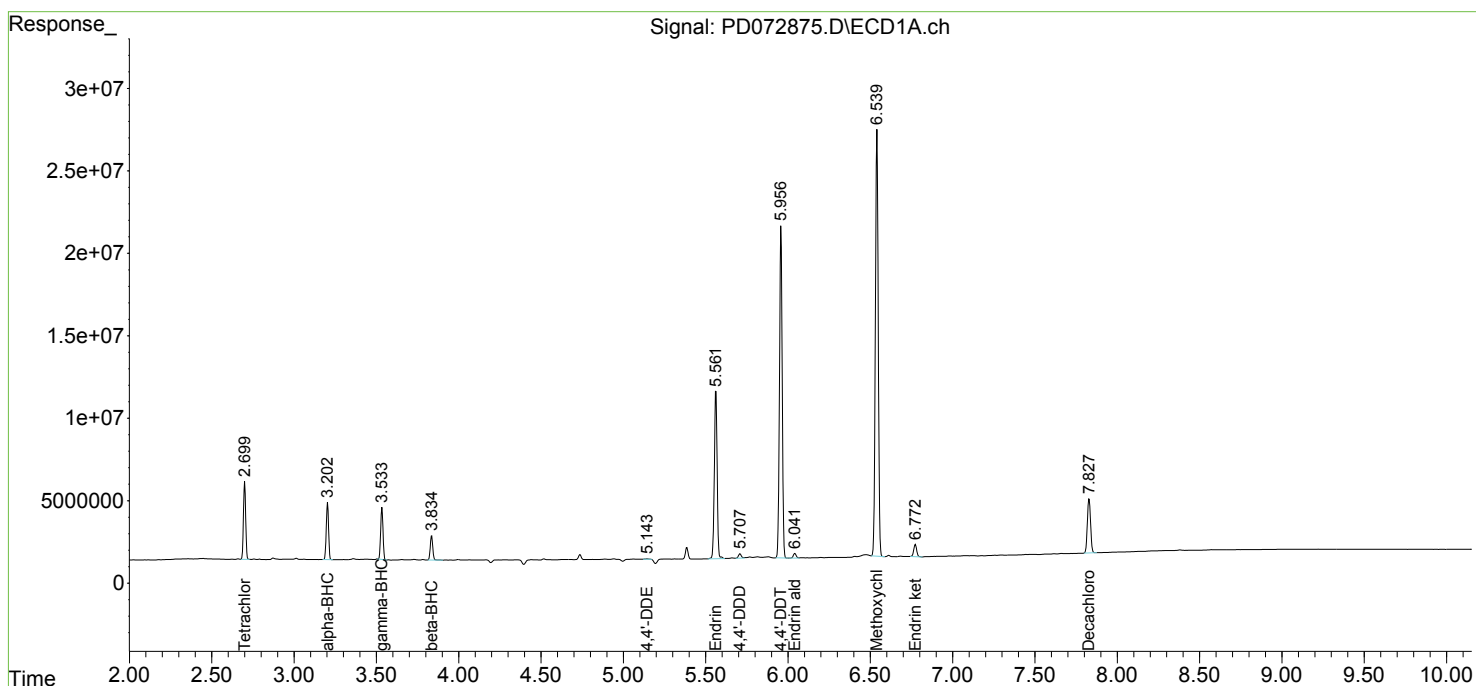
Instrument :
 ECD_D
ClientSampleId :
 PEM

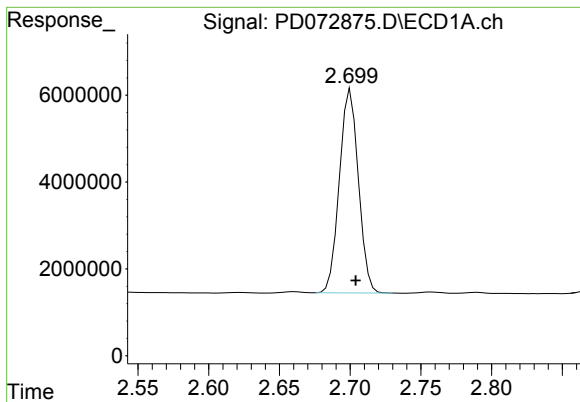
Manual Integrations
APPROVED

Reviewed By :Abdul Mirza 11/10/2022
 Supervised By :Ankita Jodhani 11/10/2022

Integration File signal 1: autoint1.e
 Integration File signal 2: autoint2.e
 Quant Time: Nov 09 20:50:15 2022
 Quant Method : Z:\pestpcbsrv\HPCHEM1\ECD_D\Method\PD102822.M
 Quant Title : GC Extractables
 QLast Update : Fri Oct 28 15:29:46 2022
 Response via : Initial Calibration
 Integrator: ChemStation

Volume Inj. : 2 µl
 Signal #1 Phase : ZB-MR2 Signal #2 Phase: ZB-MR1
 Signal #1 Info : 30M x 0.32mm x0.2 Signal #2 Info : 30M x 0.32mm x 0.50µm



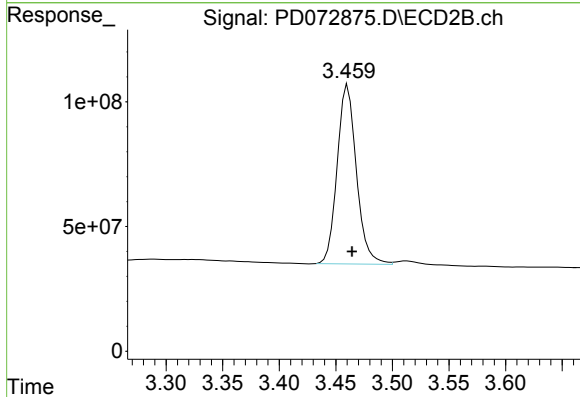


#1 Tetrachloro-m-xylene
 R.T.: 2.700 min
 Delta R.T.: -0.004 min
 Response: 43908387
 Conc: 21.41 ng/ml

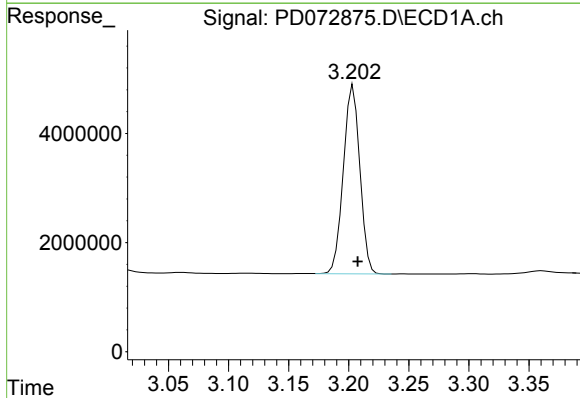
Instrument :
 ECD_D
 ClientSampleId :
 PEM

Manual Integrations
 APPROVED

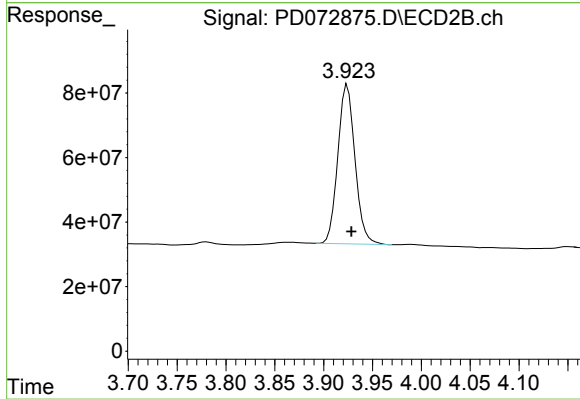
Reviewed By :Abdul Mirza 11/10/2022
 Supervised By :Ankita Jodhani 11/10/2022



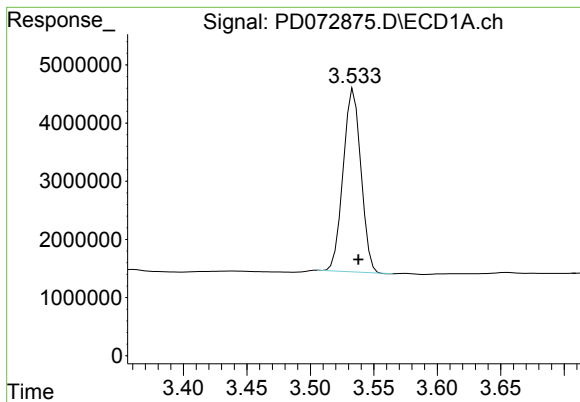
#1 Tetrachloro-m-xylene
 R.T.: 3.461 min
 Delta R.T.: -0.004 min
 Response: 851401874
 Conc: 24.67 ng/ml



#2 alpha-BHC
 R.T.: 3.204 min
 Delta R.T.: -0.004 min
 Response: 33145417
 Conc: 10.02 ng/ml



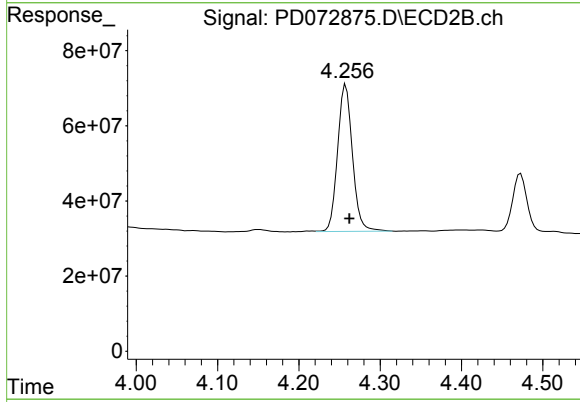
#2 alpha-BHC
 R.T.: 3.924 min
 Delta R.T.: -0.004 min
 Response: 604268180
 Conc: 12.81 ng/ml



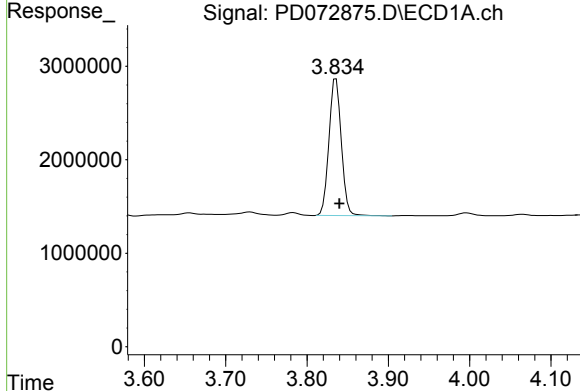
#3 gamma-BHC (Lindane)
 R.T.: 3.534 min
 Delta R.T.: -0.004 min
 Response: 30475002
 Conc: 10.13 ng/ml

Instrument :
 ECD_D
 ClientSampleId :
 PEM

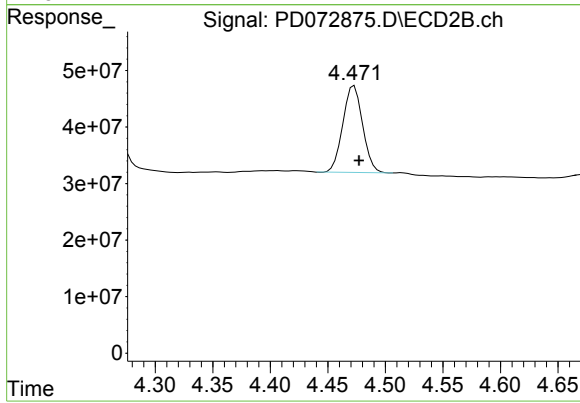
Manual Integrations
APPROVED
 Reviewed By :Abdul Mirza 11/10/2022
 Supervised By :Ankita Jodhani 11/10/2022



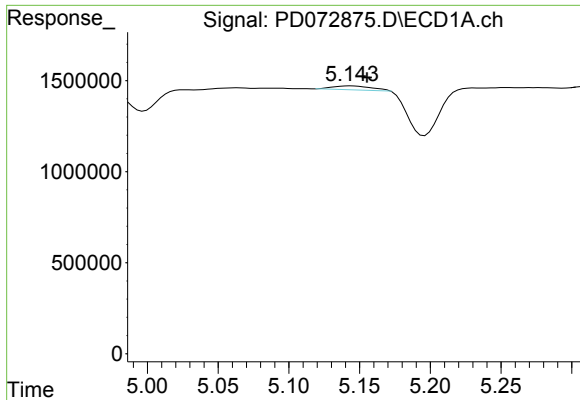
#3 gamma-BHC (Lindane)
 R.T.: 4.258 min
 Delta R.T.: -0.005 min
 Response: 496169593
 Conc: 13.50 ng/ml



#6 beta-BHC
 R.T.: 3.836 min
 Delta R.T.: -0.004 min
 Response: 15542223
 Conc: 12.15 ng/ml



#6 beta-BHC
 R.T.: 4.473 min
 Delta R.T.: -0.004 min
 Response: 184172403
 Conc: 13.10 ng/ml



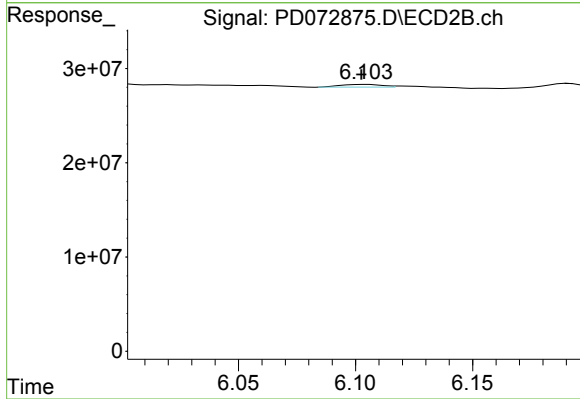
#12 4,4'-DDE

R.T.: 5.143 min
 Delta R.T.: -0.013 min
 Response: 402810
 Conc: 0.16 ng/ml

Instrument :
 ECD_D
 ClientSampleId :
 PEM

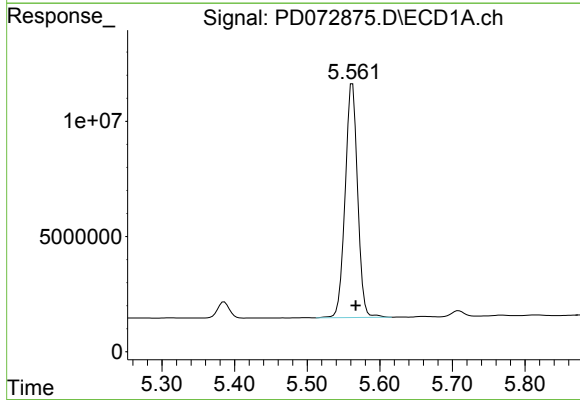
Manual Integrations
 APPROVED

Reviewed By :Abdul Mirza 11/10/2022
 Supervised By :Ankita Jodhani 11/10/2022



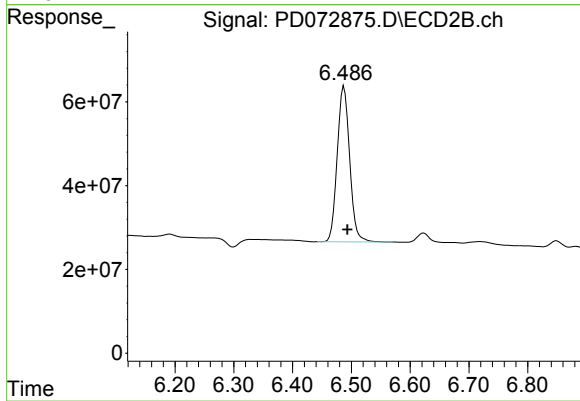
#12 4,4'-DDE

R.T.: 6.103 min
 Delta R.T.: 0.000 min
 Response: 3765982
 Conc: 0.23 ng/ml m



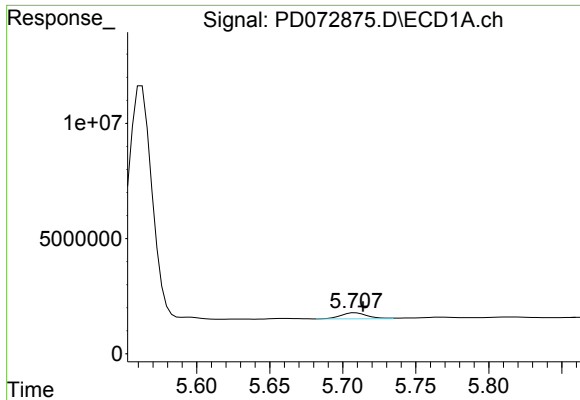
#14 Endrin

R.T.: 5.562 min
 Delta R.T.: -0.005 min
 Response: 121273981
 Conc: 56.15 ng/ml



#14 Endrin

R.T.: 6.488 min
 Delta R.T.: -0.006 min
 Response: 546937568
 Conc: 39.37 ng/ml



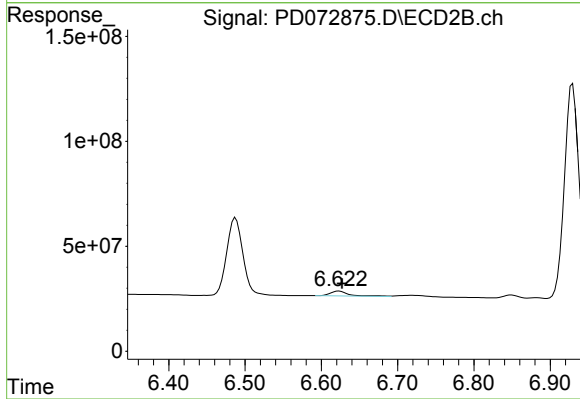
#16 4,4'-DDD

R.T.: 5.709 min
 Delta R.T.: -0.005 min
 Response: 3283490
 Conc: 1.60 ng/ml

Instrument :
 ECD_D
 ClientSampleId :
 PEM

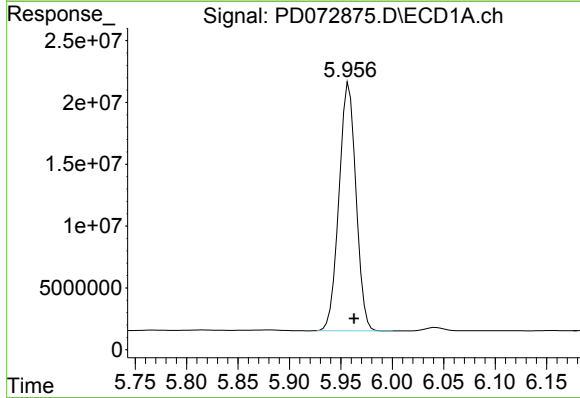
Manual Integrations
 APPROVED

Reviewed By :Abdul Mirza 11/10/2022
 Supervised By :Ankita Jodhani 11/10/2022



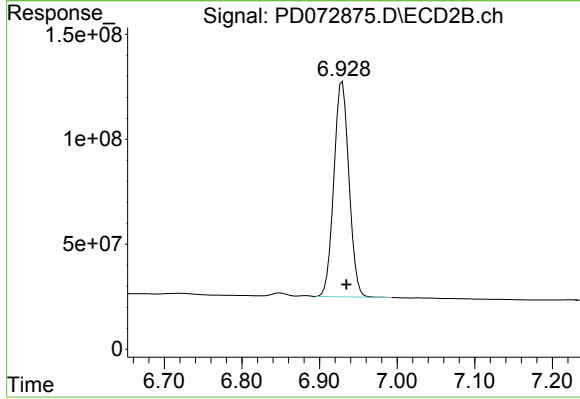
#16 4,4'-DDD

R.T.: 6.623 min
 Delta R.T.: -0.004 min
 Response: 39573067
 Conc: 2.87 ng/ml



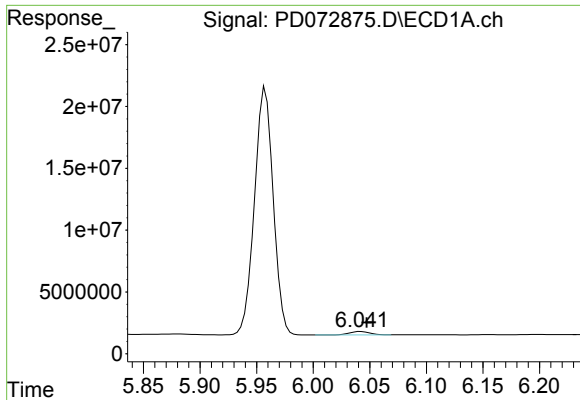
#17 4,4'-DDT

R.T.: 5.958 min
 Delta R.T.: -0.005 min
 Response: 230481278
 Conc: 116.45 ng/ml



#17 4,4'-DDT

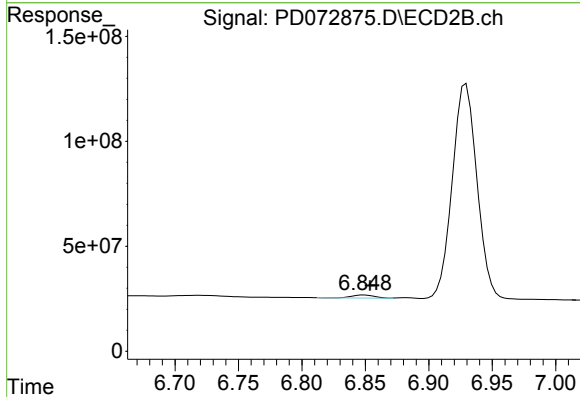
R.T.: 6.929 min
 Delta R.T.: -0.005 min
 Response: 1387743575
 Conc: 103.15 ng/ml



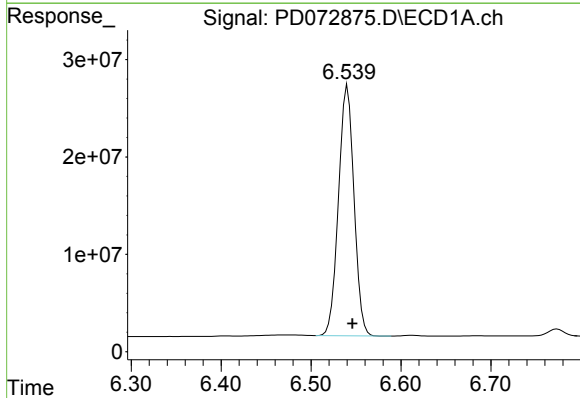
#18 Endrin aldehyde
 R.T.: 6.042 min
 Delta R.T.: -0.005 min
 Response: 3415411
 Conc: 2.05 ng/ml

Instrument : ECD_D
 ClientSampleId : PEM

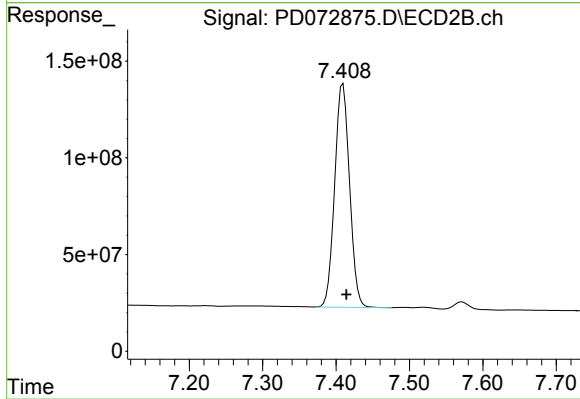
Manual Integrations
APPROVED
 Reviewed By :Abdul Mirza 11/10/2022
 Supervised By :Ankita Jodhani 11/10/2022



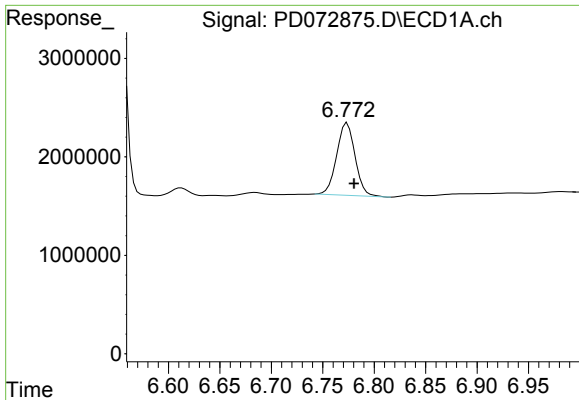
#18 Endrin aldehyde
 R.T.: 6.849 min
 Delta R.T.: -0.005 min
 Response: 18236424
 Conc: 1.69 ng/ml



#20 Methoxychlor
 R.T.: 6.541 min
 Delta R.T.: -0.005 min
 Response: 308173349
 Conc: 272.97 ng/ml



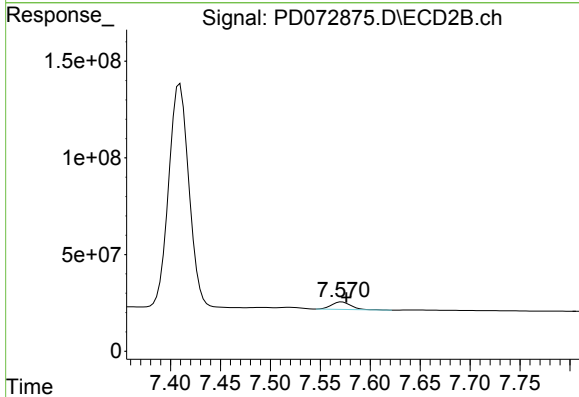
#20 Methoxychlor
 R.T.: 7.409 min
 Delta R.T.: -0.005 min
 Response: 1627716972
 Conc: 251.43 ng/ml



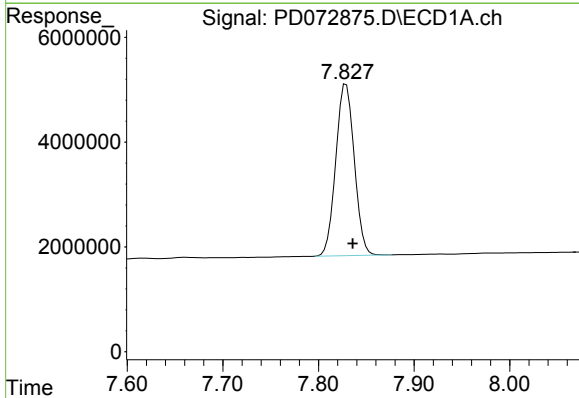
#21 Endrin ketone
 R.T.: 6.774 min
 Delta R.T.: -0.007 min
 Response: 9178000
 Conc: 3.67 ng/ml

Instrument : ECD_D
 ClientSampleId : PEM

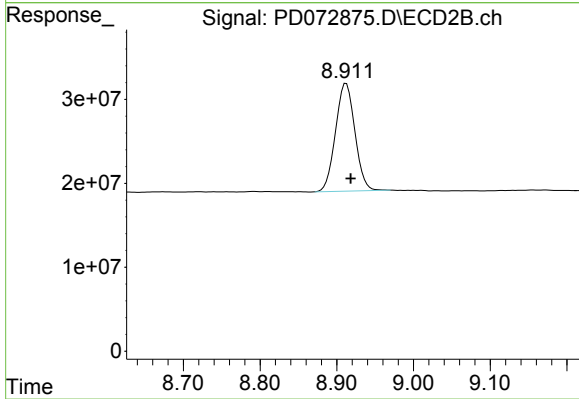
Manual Integrations
APPROVED
 Reviewed By :Abdul Mirza 11/10/2022
 Supervised By :Ankita Jodhani 11/10/2022



#21 Endrin ketone
 R.T.: 7.572 min
 Delta R.T.: -0.004 min
 Response: 51422195
 Conc: 3.63 ng/ml



#28 Decachlorobiphenyl
 R.T.: 7.829 min
 Delta R.T.: -0.007 min
 Response: 44139077
 Conc: 22.96 ng/ml



#28 Decachlorobiphenyl
 R.T.: 8.912 min
 Delta R.T.: -0.006 min
 Response: 226265550
 Conc: 23.61 ng/ml