

Data Path : Z:\pestpcbsrv\HPCHEM1\ECD_D\Data\PD110922\
 Data File : PD072877.D
 Signal(s) : Signal #1: ECD1A.ch Signal #2: ECD2B.ch
 Acq On : 09 Nov 2022 10:55
 Operator : AR\AJ
 Sample : PB148858BL
 Misc :
 ALS Vial : 5 Sample Multiplier: 1

Instrument :
 ECD_D
ClientSampleId :
 PB148858BL

Integration File signal 1: autoint1.e
 Integration File signal 2: autoint2.e
 Quant Time: Nov 09 20:52:04 2022
 Quant Method : Z:\pestpcbsrv\HPCHEM1\ECD_D\Method\PD102822.M
 Quant Title : GC Extractables
 QLast Update : Fri Oct 28 15:29:46 2022
 Response via : Initial Calibration
 Integrator: ChemStation

Volume Inj. : 2 µl
 Signal #1 Phase : ZB-MR2 Signal #2 Phase: ZB-MR1
 Signal #1 Info : 30M x 0.32mm x0.2 Signal #2 Info : 30M x 0.32mm x 0.50µm

Compound	RT#1	RT#2	Resp#1	Resp#2	ng/ml	ng/ml

System Monitoring Compounds						
1) SA Tetrachlo...	2.706	3.458	44575848	903.9E6	21.734	26.186
28) SA Decachlor...	7.836	8.912	45769033	237.8E6	23.805	24.815

Target Compounds

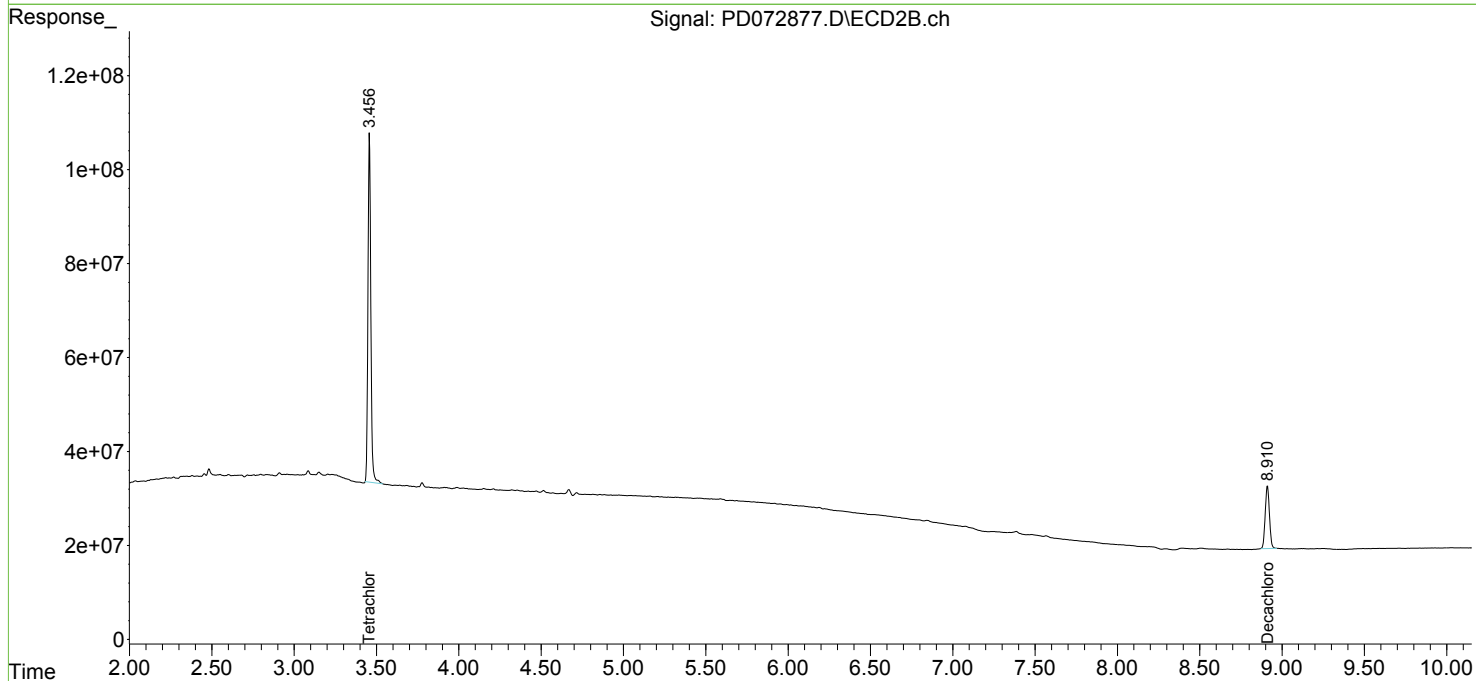
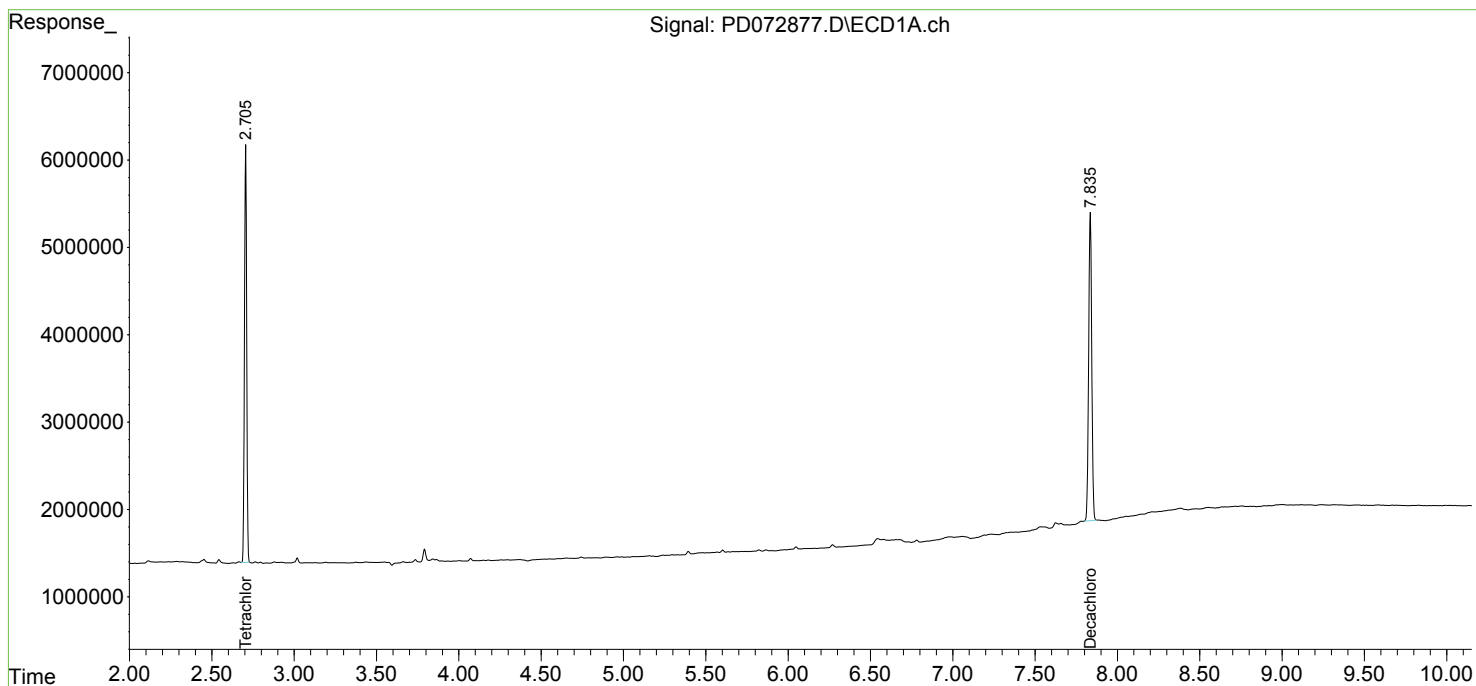
 (f)=RT Delta > 1/2 Window (#)=Amounts differ by > 25% (m)=manual int.

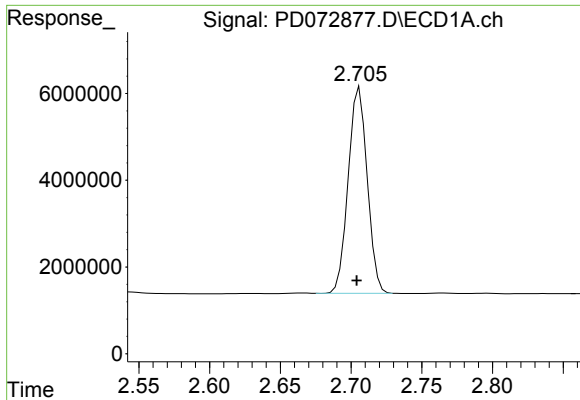
Data Path : Z:\pestpcbsrv\HPCHEM1\ECD_D\Data\PD110922\
 Data File : PD072877.D
 Signal(s) : Signal #1: ECD1A.ch Signal #2: ECD2B.ch
 Acq On : 09 Nov 2022 10:55
 Operator : AR\AJ
 Sample : PB148858BL
 Misc :
 ALS Vial : 5 Sample Multiplier: 1

Instrument :
 ECD_D
ClientSampleId :
 PB148858BL

Integration File signal 1: autoint1.e
 Integration File signal 2: autoint2.e
 Quant Time: Nov 09 20:52:04 2022
 Quant Method : Z:\pestpcbsrv\HPCHEM1\ECD_D\Method\PD102822.M
 Quant Title : GC Extractables
 QLast Update : Fri Oct 28 15:29:46 2022
 Response via : Initial Calibration
 Integrator: ChemStation

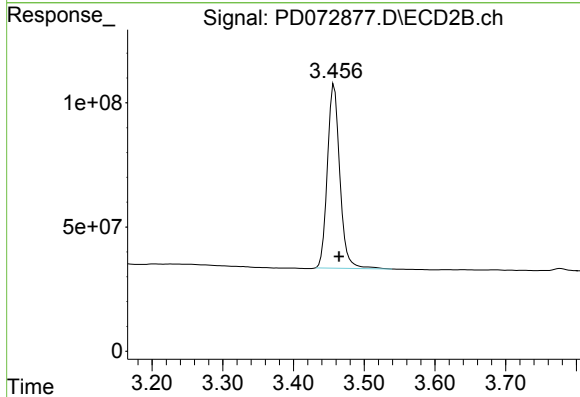
Volume Inj. : 2 µl
 Signal #1 Phase : ZB-MR2 Signal #2 Phase: ZB-MR1
 Signal #1 Info : 30M x 0.32mm x0.2 Signal #2 Info : 30M x 0.32mm x 0.50µm



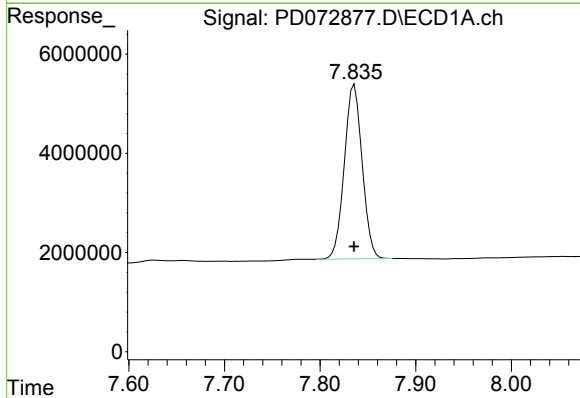


#1 Tetrachloro-m-xylene
 R.T.: 2.706 min
 Delta R.T.: 0.002 min
 Response: 44575848
 Conc: 21.73 ng/ml

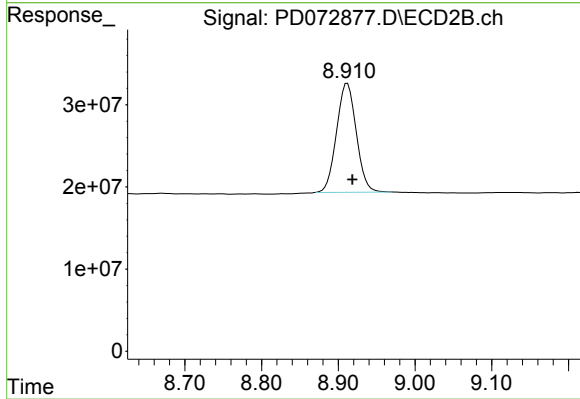
Instrument :
 ECD_D
 ClientSampleId :
 PB148858BL



#1 Tetrachloro-m-xylene
 R.T.: 3.458 min
 Delta R.T.: -0.007 min
 Response: 903886174
 Conc: 26.19 ng/ml



#28 Decachlorobiphenyl
 R.T.: 7.836 min
 Delta R.T.: 0.000 min
 Response: 45769033
 Conc: 23.80 ng/ml



#28 Decachlorobiphenyl
 R.T.: 8.912 min
 Delta R.T.: -0.006 min
 Response: 237789011
 Conc: 24.82 ng/ml