

Data Path : Z:\pestpcbsrv\HPCHEM1\ECD_D\Data\PD110922\
 Data File : PD072887.D
 Signal(s) : Signal #1: ECD1A.ch Signal #2: ECD2B.ch
 Acq On : 09 Nov 2022 13:13
 Operator : AR\AJ
 Sample : N5431-08
 Misc :
 ALS Vial : 15 Sample Multiplier: 1

Instrument :
 ECD_D
ClientSampleId :
 DISSOLVED-20221178-COMP-13-MODIFIED-ELUTRIATE

Integration File signal 1: autoint1.e
 Integration File signal 2: autoint2.e
 Quant Time: Nov 09 21:01:15 2022
 Quant Method : Z:\pestpcbsrv\HPCHEM1\ECD_D\Method\PD102822.M
 Quant Title : GC Extractables
 QLast Update : Fri Oct 28 15:29:46 2022
 Response via : Initial Calibration
 Integrator: ChemStation

Volume Inj. : 2 µl
 Signal #1 Phase : ZB-MR2 Signal #2 Phase: ZB-MR1
 Signal #1 Info : 30M x 0.32mm x0.2 Signal #2 Info : 30M x 0.32mm x 0.50µm

Compound	RT#1	RT#2	Resp#1	Resp#2	ng/ml	ng/ml

System Monitoring Compounds						
1) SA Tetrachlo...	2.701	3.462	23803826	421.0E6	11.606	12.198
28) SA Decachlor...	7.828	8.912	11717741	57681153	6.095	6.019

Target Compounds

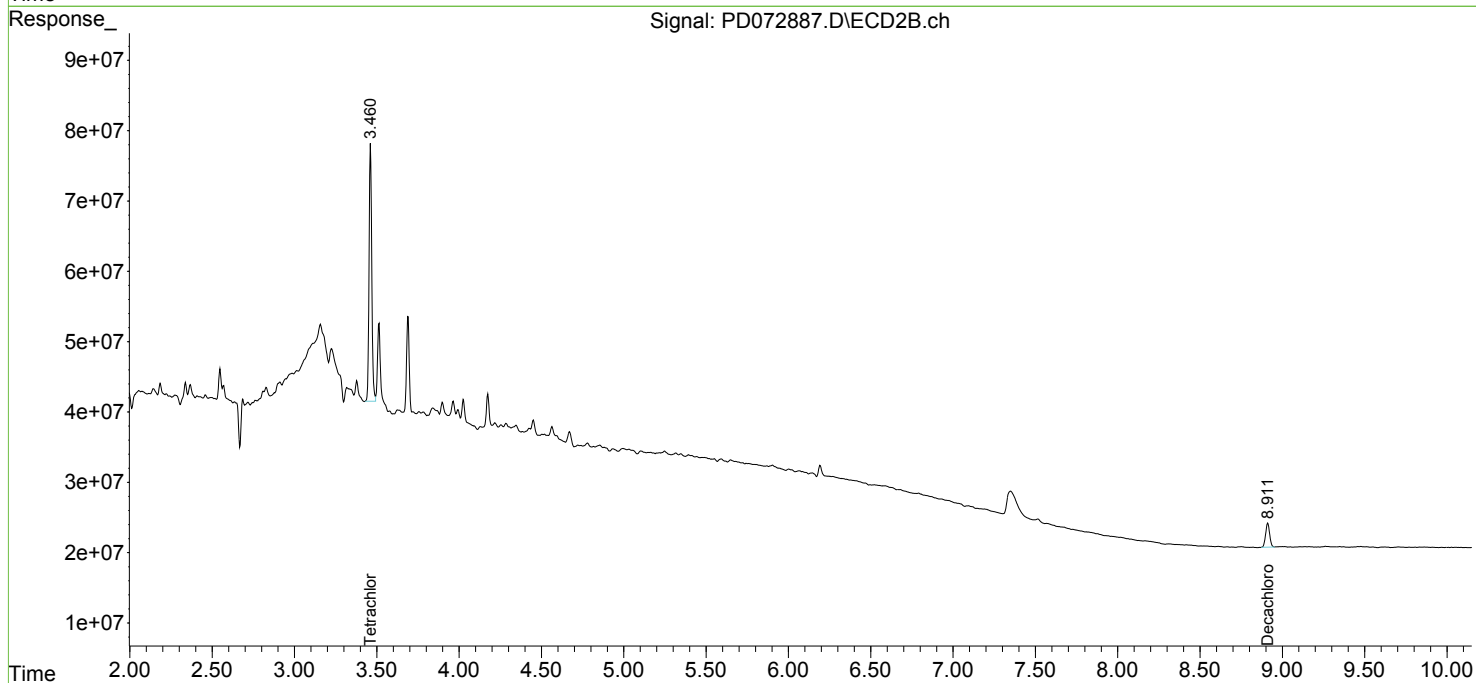
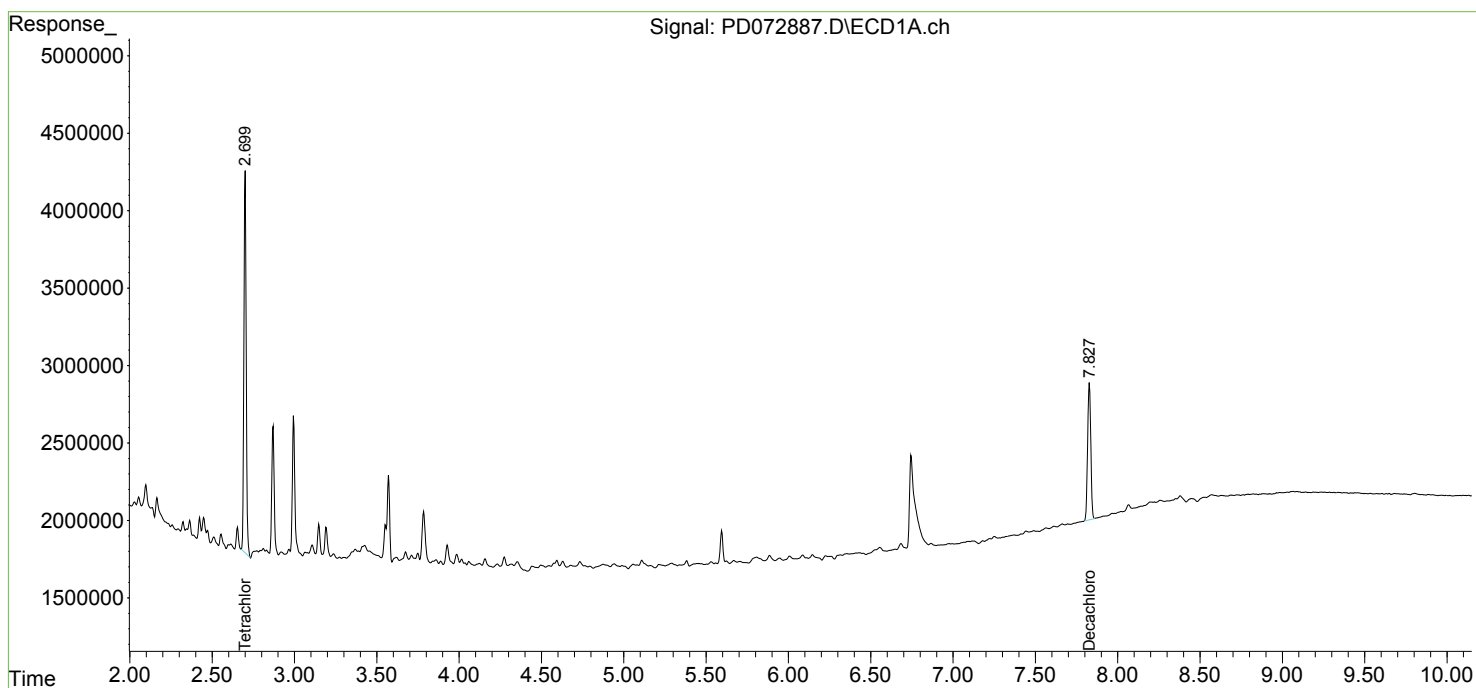
 (f)=RT Delta > 1/2 Window (#)=Amounts differ by > 25% (m)=manual int.

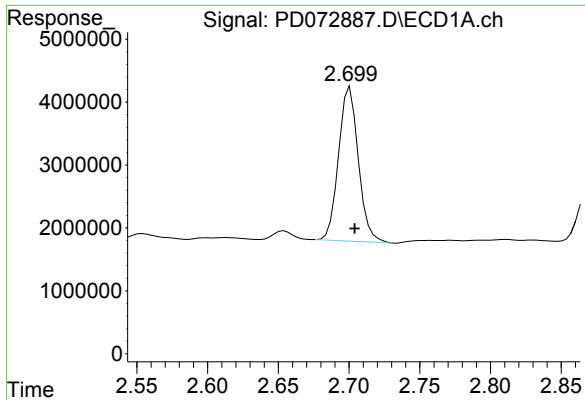
Data Path : Z:\pestpcbsrv\HPCHEM1\ECD_D\Data\PD110922\
 Data File : PD072887.D
 Signal(s) : Signal #1: ECD1A.ch Signal #2: ECD2B.ch
 Acq On : 09 Nov 2022 13:13
 Operator : AR\AJ
 Sample : N5431-08
 Misc :
 ALS Vial : 15 Sample Multiplier: 1

Instrument :
 ECD_D
ClientSampleId :
 DISSOLVED-20221178-COMP-13-MODIFIED-ELUTRIATE

Integration File signal 1: autoint1.e
 Integration File signal 2: autoint2.e
 Quant Time: Nov 09 21:01:15 2022
 Quant Method : Z:\pestpcbsrv\HPCHEM1\ECD_D\Method\PD102822.M
 Quant Title : GC Extractables
 QLast Update : Fri Oct 28 15:29:46 2022
 Response via : Initial Calibration
 Integrator: ChemStation

Volume Inj. : 2 µl
 Signal #1 Phase : ZB-MR2 Signal #2 Phase: ZB-MR1
 Signal #1 Info : 30M x 0.32mm x0.2 Signal #2 Info : 30M x 0.32mm x 0.50µm

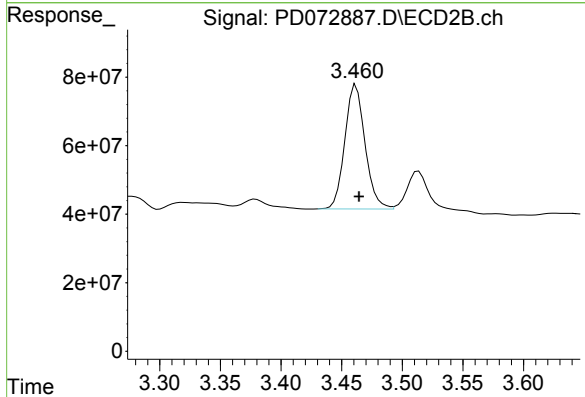




#1 Tetrachloro-m-xylene

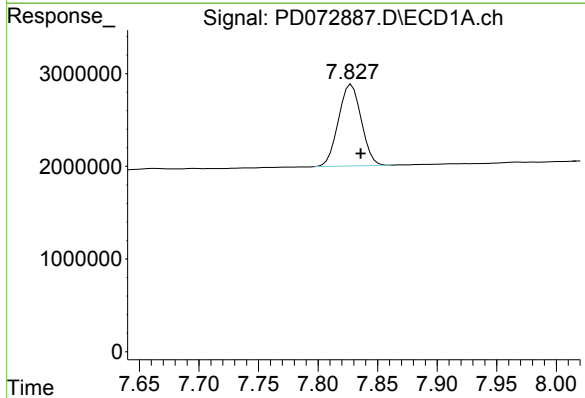
R.T.: 2.701 min
 Delta R.T.: -0.003 min
 Response: 23803826
 Conc: 11.61 ng/ml

Instrument :
 ECD_D
 ClientSampleId :
 DISSOLVED-20221178-COMP-13-MODIFIED-ELUTRIATE



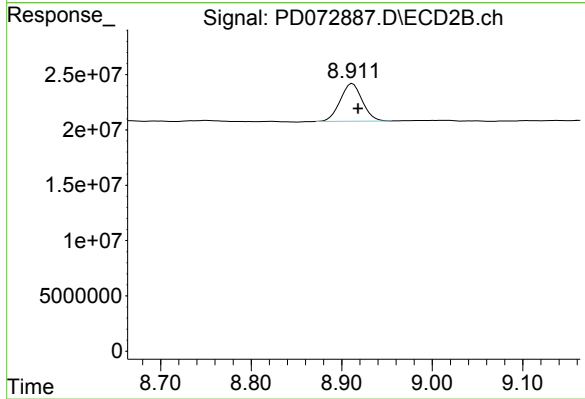
#1 Tetrachloro-m-xylene

R.T.: 3.462 min
 Delta R.T.: -0.002 min
 Response: 421043210
 Conc: 12.20 ng/ml



#28 Decachlorobiphenyl

R.T.: 7.828 min
 Delta R.T.: -0.008 min
 Response: 11717741
 Conc: 6.09 ng/ml



#28 Decachlorobiphenyl

R.T.: 8.912 min
 Delta R.T.: -0.006 min
 Response: 57681153
 Conc: 6.02 ng/ml