

Data Path : Z:\pestpcbsrv\HPCHEM1\ECD_D\Data\PD110922\
 Data File : PD072893.D
 Signal(s) : Signal #1: ECD1A.ch Signal #2: ECD2B.ch
 Acq On : 09 Nov 2022 14:37
 Operator : AR\AJ
 Sample : N5494-07
 Misc :
 ALS Vial : 21 Sample Multiplier: 1

Instrument :
 ECD_D
 ClientSampleId :
 SB-16

Integration File signal 1: autoint1.e
 Integration File signal 2: autoint2.e
 Quant Time: Nov 09 21:07:01 2022
 Quant Method : Z:\pestpcbsrv\HPCHEM1\ECD_D\Method\PD102822.M
 Quant Title : GC Extractables
 QLast Update : Fri Oct 28 15:29:46 2022
 Response via : Initial Calibration
 Integrator: ChemStation

Volume Inj. : 2 µl
 Signal #1 Phase : ZB-MR2 Signal #2 Phase: ZB-MR1
 Signal #1 Info : 30M x 0.32mm x0.2 Signal #2 Info : 30M x 0.32mm x 0.50µm

Compound	RT#1	RT#2	Resp#1	Resp#2	ng/ml	ng/ml

System Monitoring Compounds						
1) SA Tetrachlo...	2.700	3.461	44080552	856.3E6	21.493	24.808
28) SA Decachlor...	7.829	8.913	38857547	202.4E6	20.210	21.118

Target Compounds

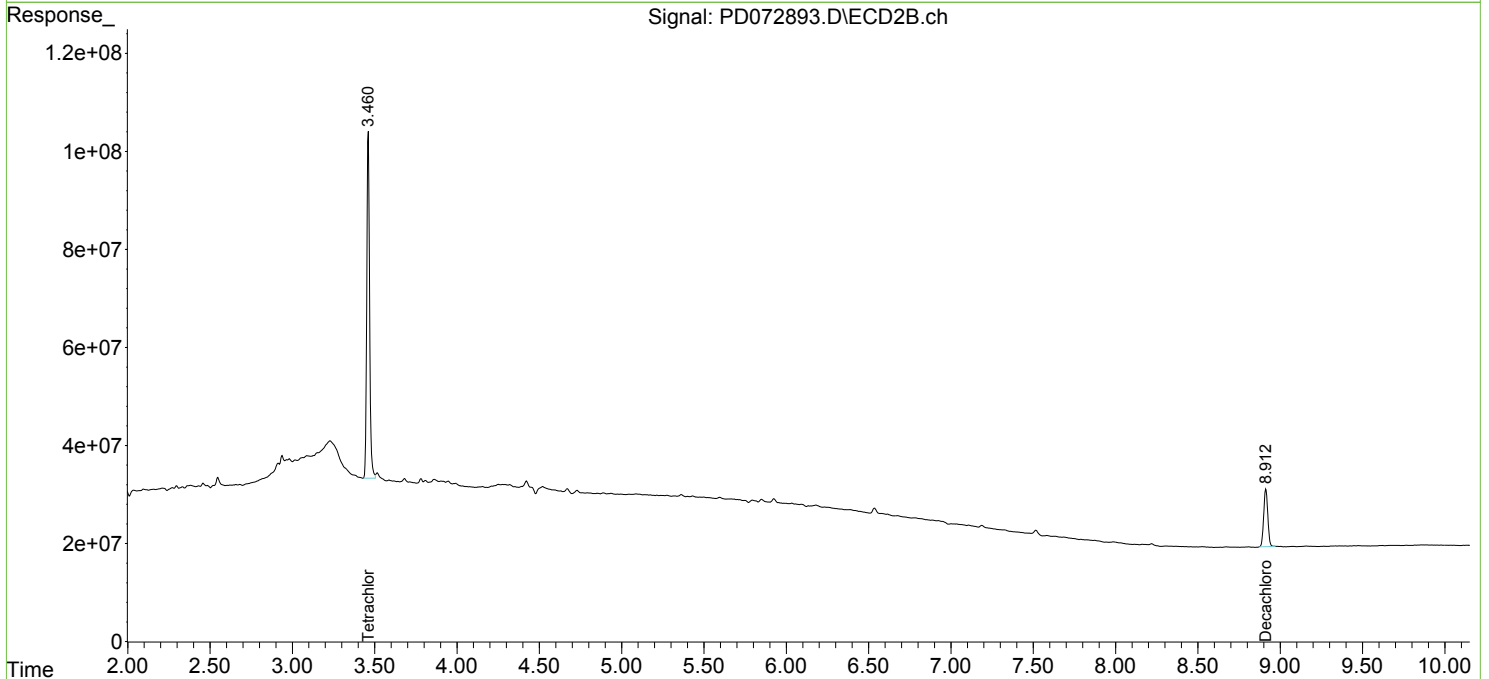
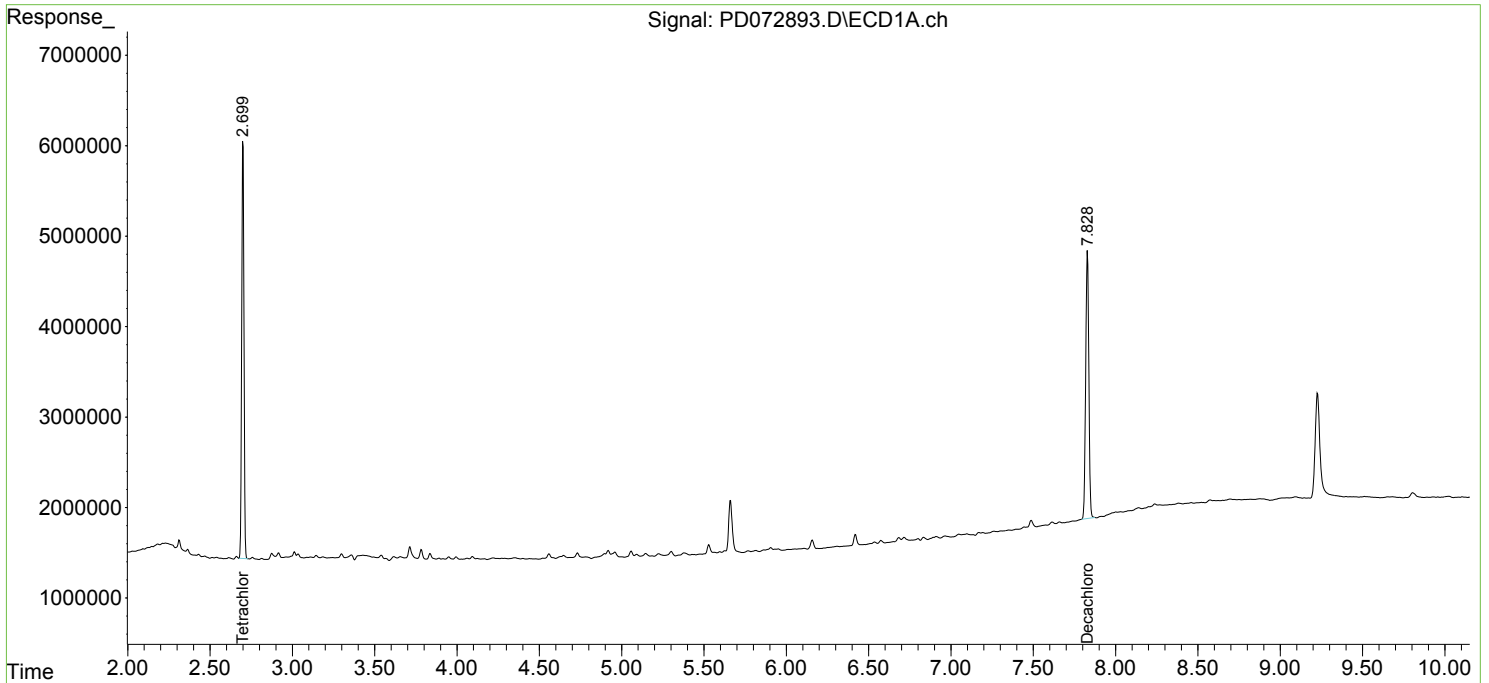
(f)=RT Delta > 1/2 Window (#)=Amounts differ by > 25% (m)=manual int.

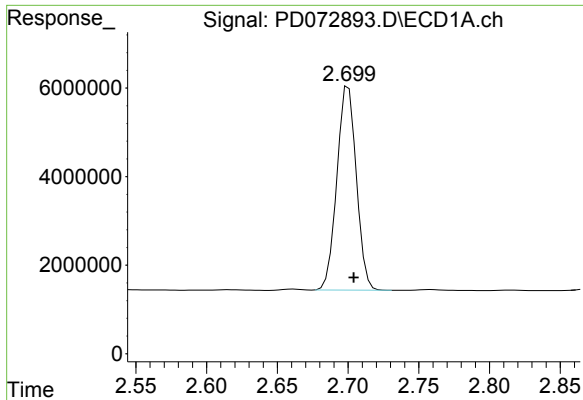
Data Path : Z:\pestpcbsrv\HPCHEM1\ECD_D\Data\PD110922\
 Data File : PD072893.D
 Signal(s) : Signal #1: ECD1A.ch Signal #2: ECD2B.ch
 Acq On : 09 Nov 2022 14:37
 Operator : AR\AJ
 Sample : N5494-07
 Misc :
 ALS Vial : 21 Sample Multiplier: 1

Instrument :
 ECD_D
 ClientSampleId :
 SB-16

Integration File signal 1: autoint1.e
 Integration File signal 2: autoint2.e
 Quant Time: Nov 09 21:07:01 2022
 Quant Method : Z:\pestpcbsrv\HPCHEM1\ECD_D\Method\PD102822.M
 Quant Title : GC Extractables
 QLast Update : Fri Oct 28 15:29:46 2022
 Response via : Initial Calibration
 Integrator: ChemStation

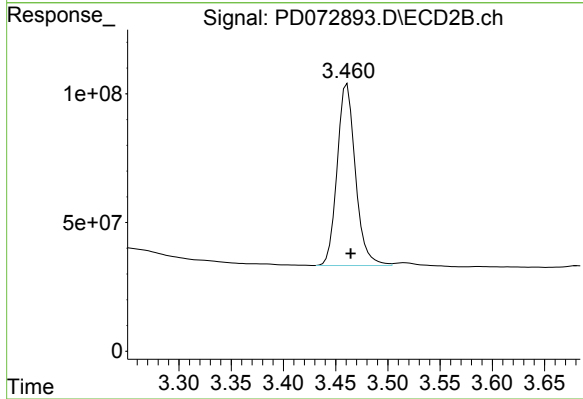
Volume Inj. : 2 µl
 Signal #1 Phase : ZB-MR2 Signal #2 Phase: ZB-MR1
 Signal #1 Info : 30M x 0.32mm x0.2 Signal #2 Info : 30M x 0.32mm x 0.50µm



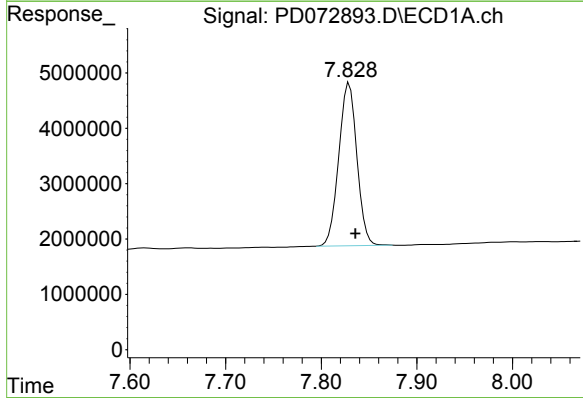


#1 Tetrachloro-m-xylene
 R.T.: 2.700 min
 Delta R.T.: -0.004 min
 Response: 44080552
 Conc: 21.49 ng/ml

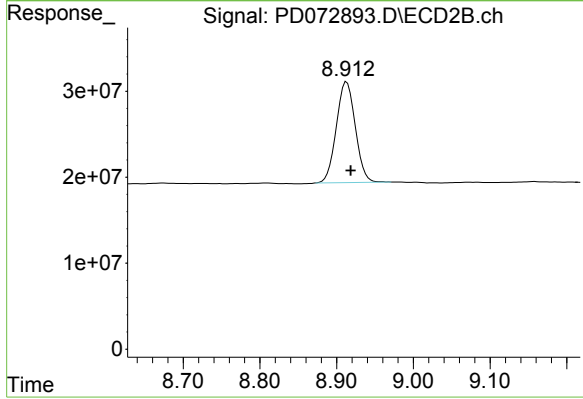
Instrument :
 ECD_D
 ClientSampleId :
 SB-16



#1 Tetrachloro-m-xylene
 R.T.: 3.461 min
 Delta R.T.: -0.003 min
 Response: 856318367
 Conc: 24.81 ng/ml



#28 Decachlorobiphenyl
 R.T.: 7.829 min
 Delta R.T.: -0.006 min
 Response: 38857547
 Conc: 20.21 ng/ml



#28 Decachlorobiphenyl
 R.T.: 8.913 min
 Delta R.T.: -0.005 min
 Response: 202357450
 Conc: 21.12 ng/ml