

Data Path : Z:\pestpcbsrv\HPCHEM1\ECD\_D\Data\PD110922\  
 Data File : PD072897.D  
 Signal(s) : Signal #1: ECD1A.ch Signal #2: ECD2B.ch  
 Acq On : 09 Nov 2022 15:30  
 Operator : AR\AJ  
 Sample : PEM  
 Misc :  
 ALS Vial : 3 Sample Multiplier: 1

**Instrument :**  
 ECD\_D  
**ClientSampleId :**  
 PEM

**Manual Integrations**  
**APPROVED**  
 Reviewed By :Abdul Mirza 11/10/2022  
 Supervised By :Ankita Jodhani 11/10/2022

Integration File signal 1: autoint1.e  
 Integration File signal 2: autoint2.e  
 Quant Time: Nov 10 09:17:06 2022  
 Quant Method : Z:\pestpcbsrv\HPCHEM1\ECD\_D\Method\PD102822.M  
 Quant Title : GC Extractables  
 QLast Update : Fri Oct 28 15:29:46 2022  
 Response via : Initial Calibration  
 Integrator: ChemStation

Volume Inj. : 2 µl  
 Signal #1 Phase : ZB-MR2 Signal #2 Phase: ZB-MR1  
 Signal #1 Info : 30M x 0.32mm x0.2 Signal #2 Info : 30M x 0.32mm x 0.50µm

Compound	RT#1	RT#2	Resp#1	Resp#2	ng/ml	ng/ml
-----						
System Monitoring Compounds						
1) SA Tetrachlo...	2.700	3.461	43427248	845.2E6	21.174	24.487
28) SA Decachlor...	7.829	8.912	44199660	232.7E6	22.989	24.288
Target Compounds						
2) A alpha-BHC	3.203	3.926	33111050	594.9E6	10.010	12.612 #
3) MA gamma-BHC...	3.534	4.259	30425590	495.9E6	10.114	13.495 #
6) B beta-BHC	3.836	4.474	15521031	185.3E6	12.132	13.180
14) MA Endrin	5.562	6.489	118.9E6	485.3E6	55.043	34.932 #
16) A 4,4'-DDD	5.708	6.623	6728740	62695770	3.288	4.552 #
17) MA 4,4'-DDT	5.957	6.931	222.4E6	1366.4E6	112.366	101.564
18) B Endrin al...	6.041	6.849	3998723	21282985	2.403	1.976m
20) A Methoxychlor	6.540	7.410	298.7E6	1619.4E6	264.590	250.151
21) B Endrin ke...	6.773	7.571	11120663	61638178	4.452	4.357m

(f)=RT Delta > 1/2 Window (#)=Amounts differ by > 25% (m)=manual int.

Data Path : Z:\pestpcbsrv\HPCHEM1\ECD\_D\Data\PD110922\  
 Data File : PD072897.D  
 Signal(s) : Signal #1: ECD1A.ch Signal #2: ECD2B.ch  
 Acq On : 09 Nov 2022 15:30  
 Operator : AR\AJ  
 Sample : PEM  
 Misc :  
 ALS Vial : 3 Sample Multiplier: 1

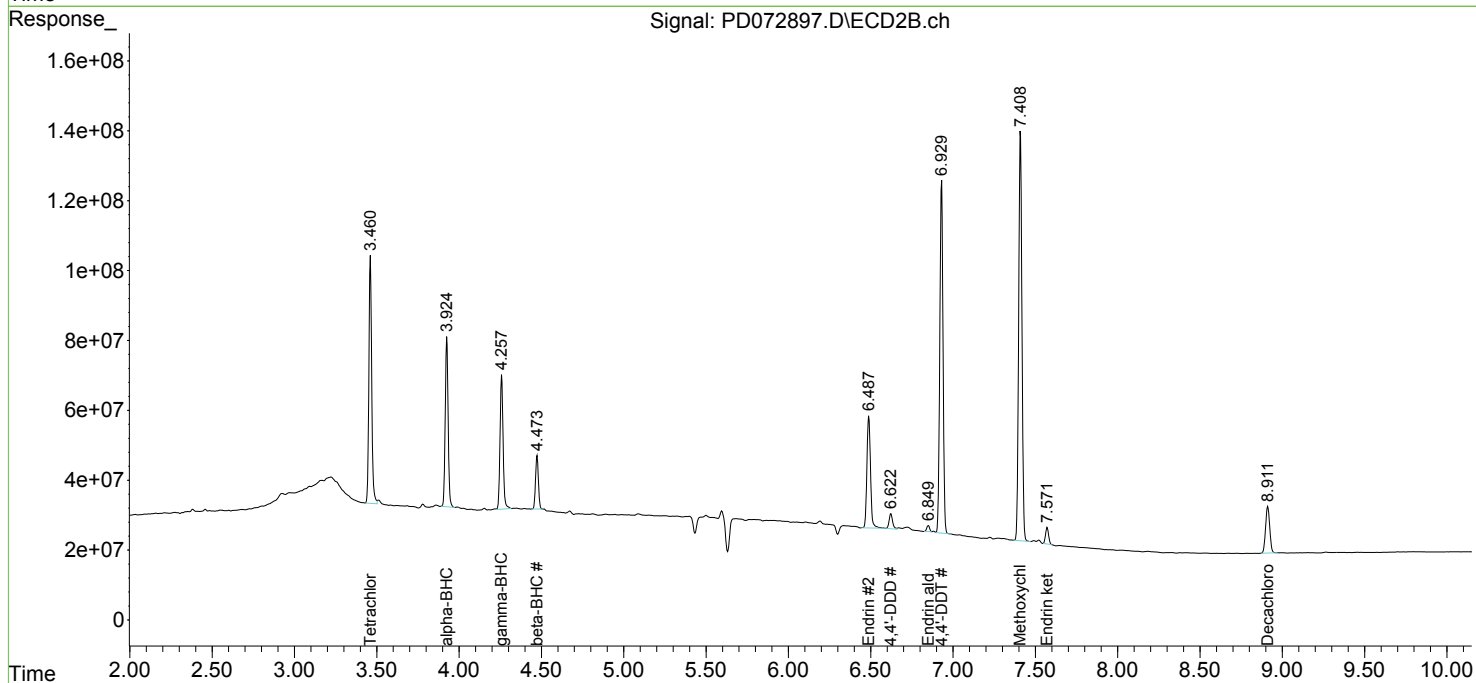
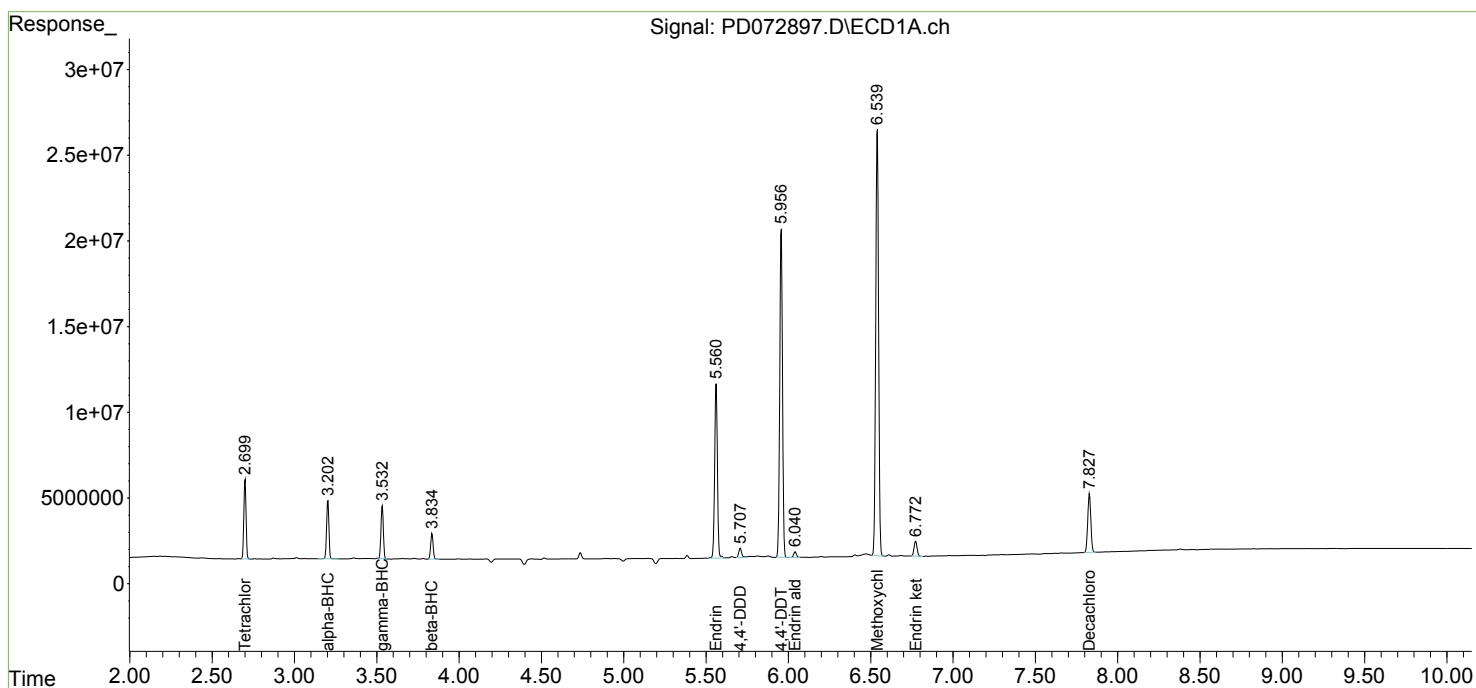
Instrument :  
 ECD\_D  
 ClientSampleId :  
 PEM

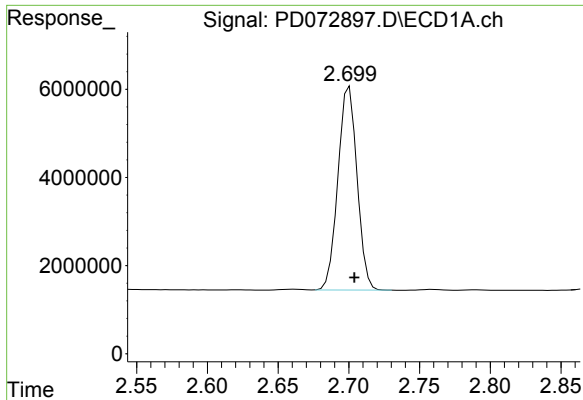
Manual Integrations  
 APPROVED

Reviewed By :Abdul Mirza 11/10/2022  
 Supervised By :Ankita Jodhani 11/10/2022

Integration File signal 1: autoint1.e  
 Integration File signal 2: autoint2.e  
 Quant Time: Nov 10 09:17:06 2022  
 Quant Method : Z:\pestpcbsrv\HPCHEM1\ECD\_D\Method\PD102822.M  
 Quant Title : GC Extractables  
 QLast Update : Fri Oct 28 15:29:46 2022  
 Response via : Initial Calibration  
 Integrator: ChemStation

Volume Inj. : 2 µl  
 Signal #1 Phase : ZB-MR2 Signal #2 Phase: ZB-MR1  
 Signal #1 Info : 30M x 0.32mm x0.2 Signal #2 Info : 30M x 0.32mm x 0.50µm





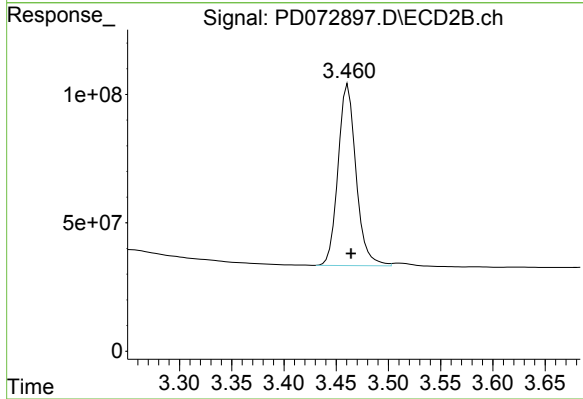
#1 Tetrachloro-m-xylene

R.T.: 2.700 min  
 Delta R.T.: -0.004 min  
 Response: 43427248  
 Conc: 21.17 ng/ml

Instrument :  
 ECD\_D  
 ClientSampleId :  
 PEM

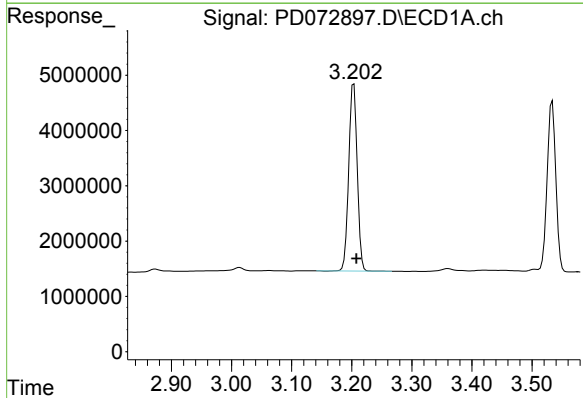
Manual Integrations  
 APPROVED

Reviewed By :Abdul Mirza 11/10/2022  
 Supervised By :Ankita Jodhani 11/10/2022



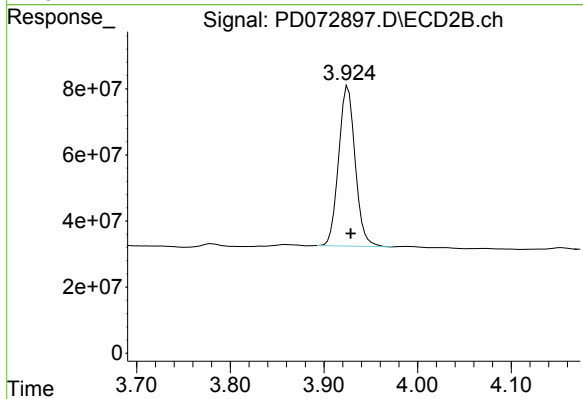
#1 Tetrachloro-m-xylene

R.T.: 3.461 min  
 Delta R.T.: -0.003 min  
 Response: 845241315  
 Conc: 24.49 ng/ml



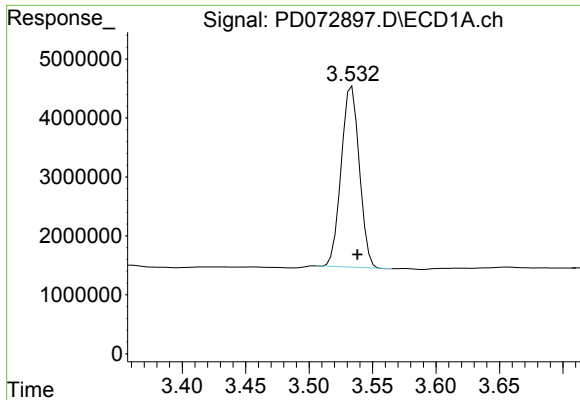
#2 alpha-BHC

R.T.: 3.203 min  
 Delta R.T.: -0.004 min  
 Response: 33111050  
 Conc: 10.01 ng/ml



#2 alpha-BHC

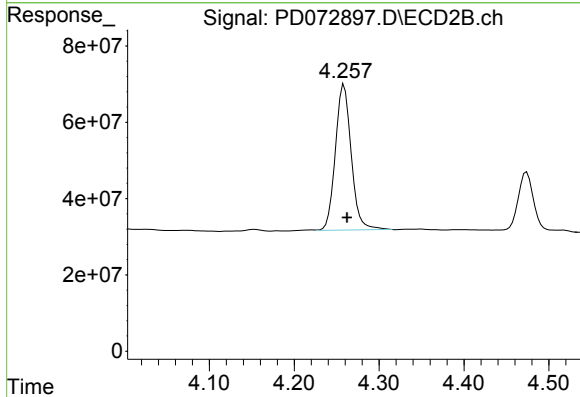
R.T.: 3.926 min  
 Delta R.T.: -0.003 min  
 Response: 594942817  
 Conc: 12.61 ng/ml



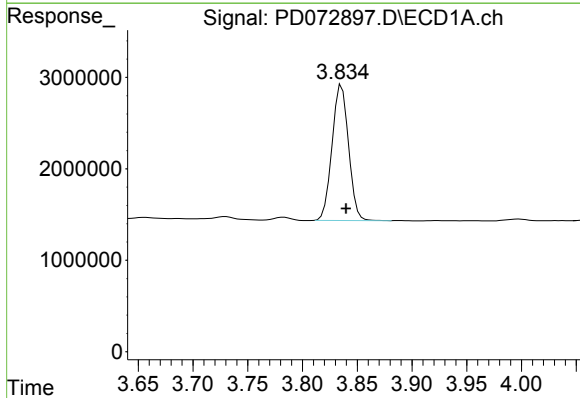
#3 gamma-BHC (Lindane)  
 R.T.: 3.534 min  
 Delta R.T.: -0.004 min  
 Response: 30425590  
 Conc: 10.11 ng/ml

Instrument :  
 ECD\_D  
 ClientSampleId :  
 PEM

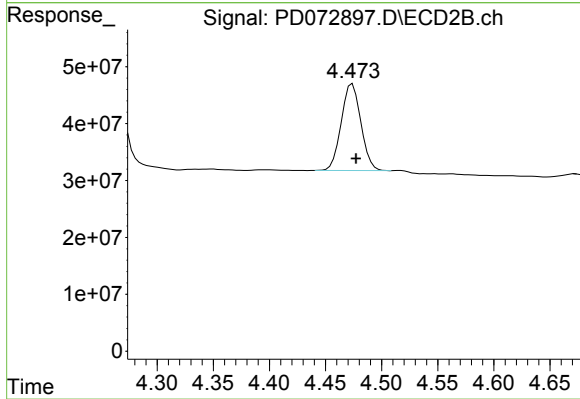
**Manual Integrations**  
**APPROVED**  
 Reviewed By :Abdul Mirza 11/10/2022  
 Supervised By :Ankita Jodhani 11/10/2022



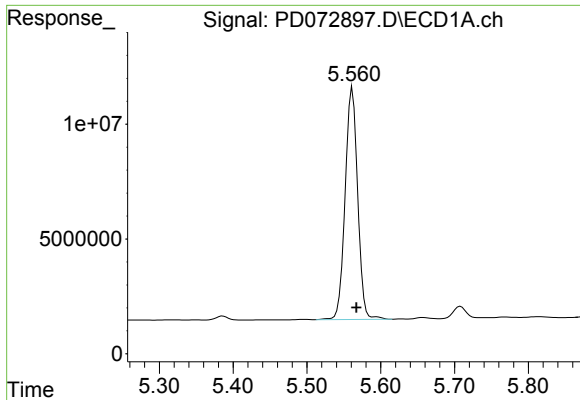
#3 gamma-BHC (Lindane)  
 R.T.: 4.259 min  
 Delta R.T.: -0.003 min  
 Response: 495918715  
 Conc: 13.50 ng/ml



#6 beta-BHC  
 R.T.: 3.836 min  
 Delta R.T.: -0.004 min  
 Response: 15521031  
 Conc: 12.13 ng/ml



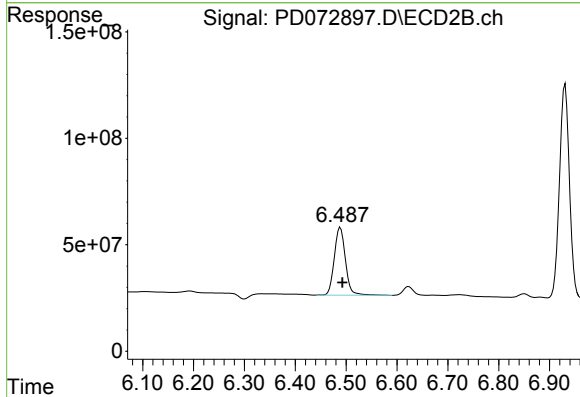
#6 beta-BHC  
 R.T.: 4.474 min  
 Delta R.T.: -0.003 min  
 Response: 185294281  
 Conc: 13.18 ng/ml



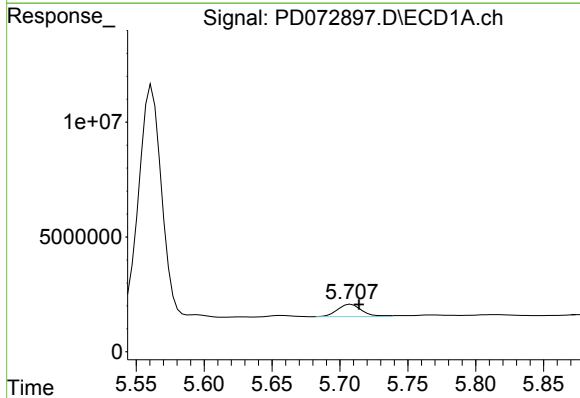
#14 Endrin  
 R.T.: 5.562 min  
 Delta R.T.: -0.005 min  
 Response: 118883374  
 Conc: 55.04 ng/ml

Instrument : ECD\_D  
 ClientSampleId : PEM

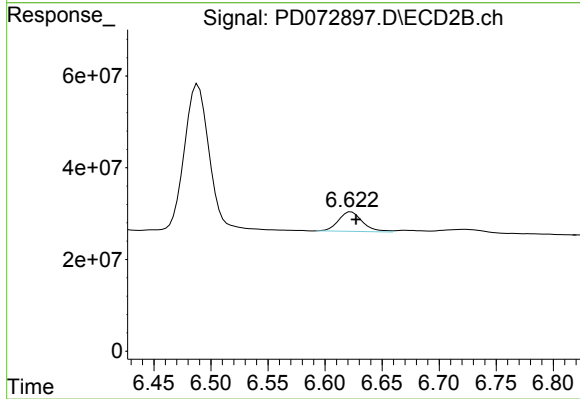
**Manual Integrations**  
**APPROVED**  
 Reviewed By :Abdul Mirza 11/10/2022  
 Supervised By :Ankita Jodhani 11/10/2022



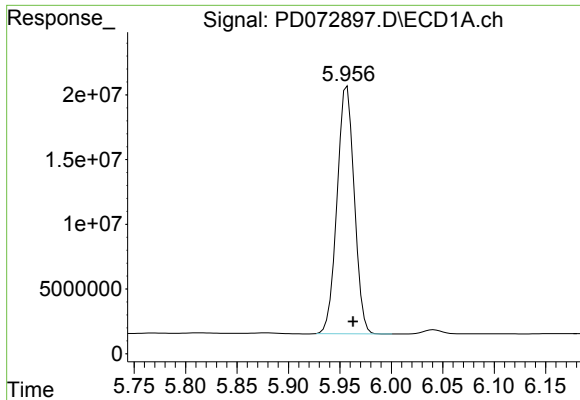
#14 Endrin  
 R.T.: 6.489 min  
 Delta R.T.: -0.004 min  
 Response: 485276168  
 Conc: 34.93 ng/ml



#16 4,4'-DDD  
 R.T.: 5.708 min  
 Delta R.T.: -0.006 min  
 Response: 6728740  
 Conc: 3.29 ng/ml



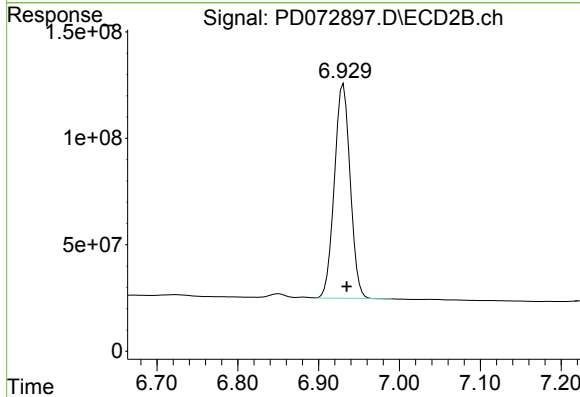
#16 4,4'-DDD  
 R.T.: 6.623 min  
 Delta R.T.: -0.004 min  
 Response: 62695770  
 Conc: 4.55 ng/ml



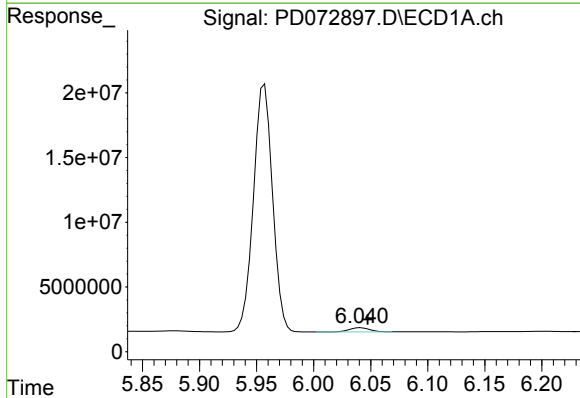
#17 4,4'-DDT  
 R.T.: 5.957 min  
 Delta R.T.: -0.006 min  
 Response: 222388591  
 Conc: 112.37 ng/ml

Instrument : ECD\_D  
 ClientSampleId : PEM

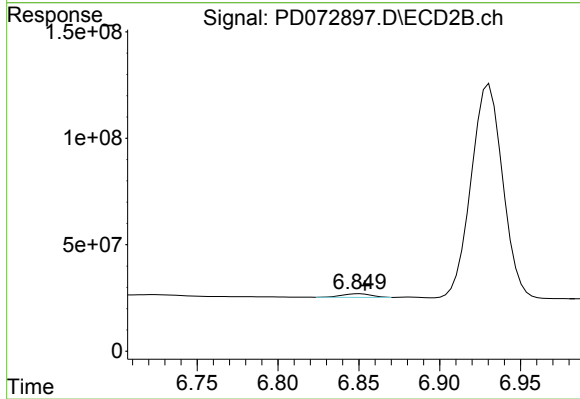
**Manual Integrations**  
**APPROVED**  
 Reviewed By :Abdul Mirza 11/10/2022  
 Supervised By :Ankita Jodhani 11/10/2022



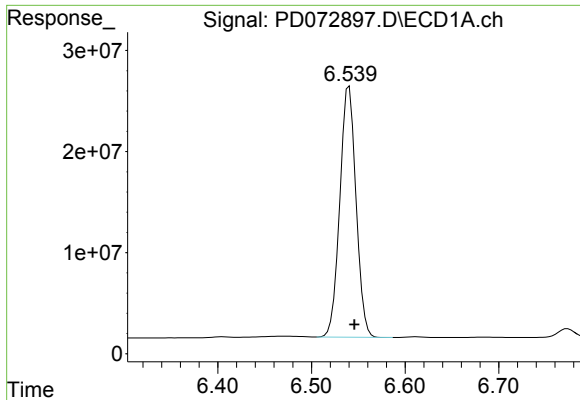
#17 4,4'-DDT  
 R.T.: 6.931 min  
 Delta R.T.: -0.004 min  
 Response: 1366367641  
 Conc: 101.56 ng/ml



#18 Endrin aldehyde  
 R.T.: 6.041 min  
 Delta R.T.: -0.006 min  
 Response: 3998723  
 Conc: 2.40 ng/ml



#18 Endrin aldehyde  
 R.T.: 6.849 min  
 Delta R.T.: -0.005 min  
 Response: 21282985  
 Conc: 1.98 ng/ml m



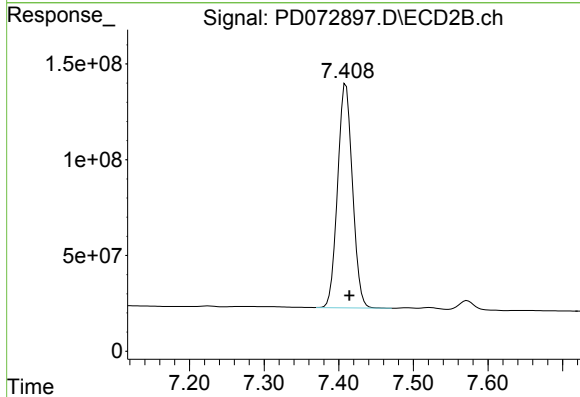
#20 Methoxychlor

R.T.: 6.540 min  
 Delta R.T.: -0.006 min  
 Response: 298712587  
 Conc: 264.59 ng/ml

Instrument :  
 ECD\_D  
 ClientSampleId :  
 PEM

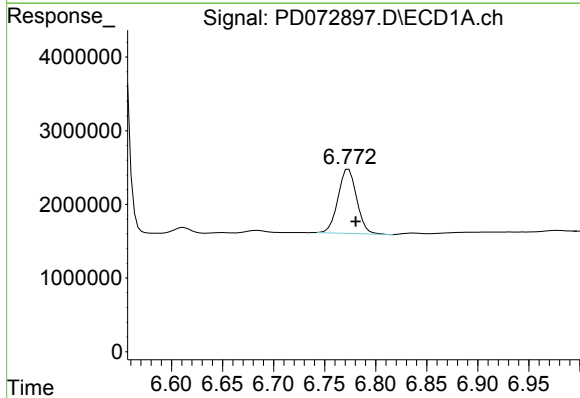
Manual Integrations  
 APPROVED

Reviewed By :Abdul Mirza 11/10/2022  
 Supervised By :Ankita Jodhani 11/10/2022



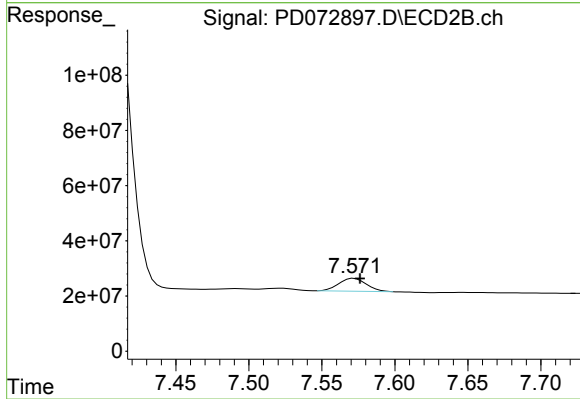
#20 Methoxychlor

R.T.: 7.410 min  
 Delta R.T.: -0.005 min  
 Response: 1619444730  
 Conc: 250.15 ng/ml



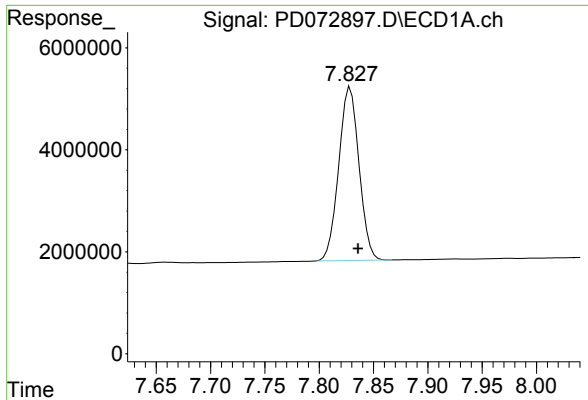
#21 Endrin ketone

R.T.: 6.773 min  
 Delta R.T.: -0.007 min  
 Response: 11120663  
 Conc: 4.45 ng/ml



#21 Endrin ketone

R.T.: 7.571 min  
 Delta R.T.: -0.005 min  
 Response: 61638178  
 Conc: 4.36 ng/ml m

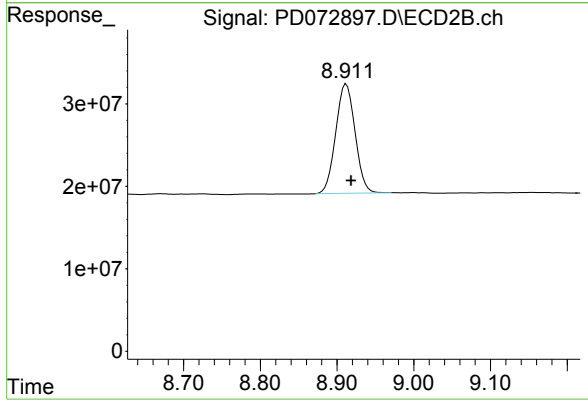


#28 Decachlorobiphenyl  
 R.T.: 7.829 min  
 Delta R.T.: -0.007 min  
 Response: 44199660  
 Conc: 22.99 ng/ml

Instrument :  
 ECD\_D  
 ClientSampleId :  
 PEM

Manual Integrations  
 APPROVED

Reviewed By :Abdul Mirza 11/10/2022  
 Supervised By :Ankita Jodhani 11/10/2022



#28 Decachlorobiphenyl  
 R.T.: 8.912 min  
 Delta R.T.: -0.006 min  
 Response: 232734197  
 Conc: 24.29 ng/ml