

Data Path : Z:\pestpcbsrv\HPCHEM1\ECD_D\Data\PD110922\
 Data File : PD072910.D
 Signal(s) : Signal #1: ECD1A.ch Signal #2: ECD2B.ch
 Acq On : 09 Nov 2022 18:23
 Operator : AR\AJ
 Sample : N5495-10MSD
 Misc :
 ALS Vial : 35 Sample Multiplier: 1

Instrument :
 ECD_D
 ClientSampleId :
 DUP-01MSD

Integration File signal 1: autoint1.e
 Integration File signal 2: autoint2.e
 Quant Time: Nov 09 21:20:25 2022
 Quant Method : Z:\pestpcbsrv\HPCHEM1\ECD_D\Method\PD102822.M
 Quant Title : GC Extractables
 QLast Update : Fri Oct 28 15:29:46 2022
 Response via : Initial Calibration
 Integrator: ChemStation

Volume Inj. : 2 µl
 Signal #1 Phase : ZB-MR2 Signal #2 Phase: ZB-MR1
 Signal #1 Info : 30M x 0.32mm x0.2 Signal #2 Info : 30M x 0.32mm x 0.50µm

	Compound	RT#1	RT#2	Resp#1	Resp#2	ng/ml	ng/ml

System Monitoring Compounds							
1)	SA Tetrachlo...	2.700	3.461	43924722	872.5E6	21.417	25.276
28)	SA Decachlor...	7.828	8.910	36948177	207.1E6	19.217	21.608
Target Compounds							
2)	A alpha-BHC	3.203	3.925	193.5E6	2724.4E6	58.487	57.756
3)	MA gamma-BHC...	3.534	4.259	174.4E6	2099.2E6	57.961	57.126
4)	MA Heptachlor	3.866	4.825	166.7E6	1409.2E6	55.236	54.635
5)	MB Aldrin	4.145	5.163	172.1E6	1243.8E6	59.622	58.435
6)	B beta-BHC	3.835	4.473	68426594	711.4E6	53.921	50.601
7)	B delta-BHC	4.065	4.718	179.5E6	1644.1E6	59.013	56.957
8)	B Heptachlo...	4.649	5.595	146.0E6	1026.2E6	56.232	56.978
9)	A Endosulfan I	5.018	5.980	134.5E6	920.3E6	56.023	56.348
10)	B gamma-Chl...	4.897	5.849	144.5E6	1002.1E6	54.643	57.520
11)	B alpha-Chl...	4.961	5.924	145.9E6	984.5E6	56.400	57.616
12)	B 4,4'-DDE	5.149	6.098	143.9E6	959.9E6	58.762	57.862
13)	MA Dieldrin	5.284	6.257	154.0E6	995.8E6	60.715	58.404
14)	MA Endrin	5.561	6.488	135.2E6	833.5E6	62.583	59.999
15)	B Endosulfa...	5.859	6.717	127.4E6	825.0E6	60.635	61.121
16)	A 4,4'-DDD	5.707	6.622	120.6E6	812.3E6	58.949	58.974
17)	MA 4,4'-DDT	5.956	6.929	105.7E6	704.1E6	53.412	52.334
18)	B Endrin al...	6.040	6.849	100.2E6	631.9E6	60.204	58.683
19)	B Endosulfa...	6.263	7.081	116.1E6	705.7E6	55.672	56.346
20)	A Methoxychlor	6.539	7.409	58035311	343.7E6	51.406	53.086
21)	B Endrin ke...	6.773	7.570	135.1E6	773.2E6	54.076	54.649
22)	Mirex	6.938	8.018	97670550	492.7E6	54.979	54.251

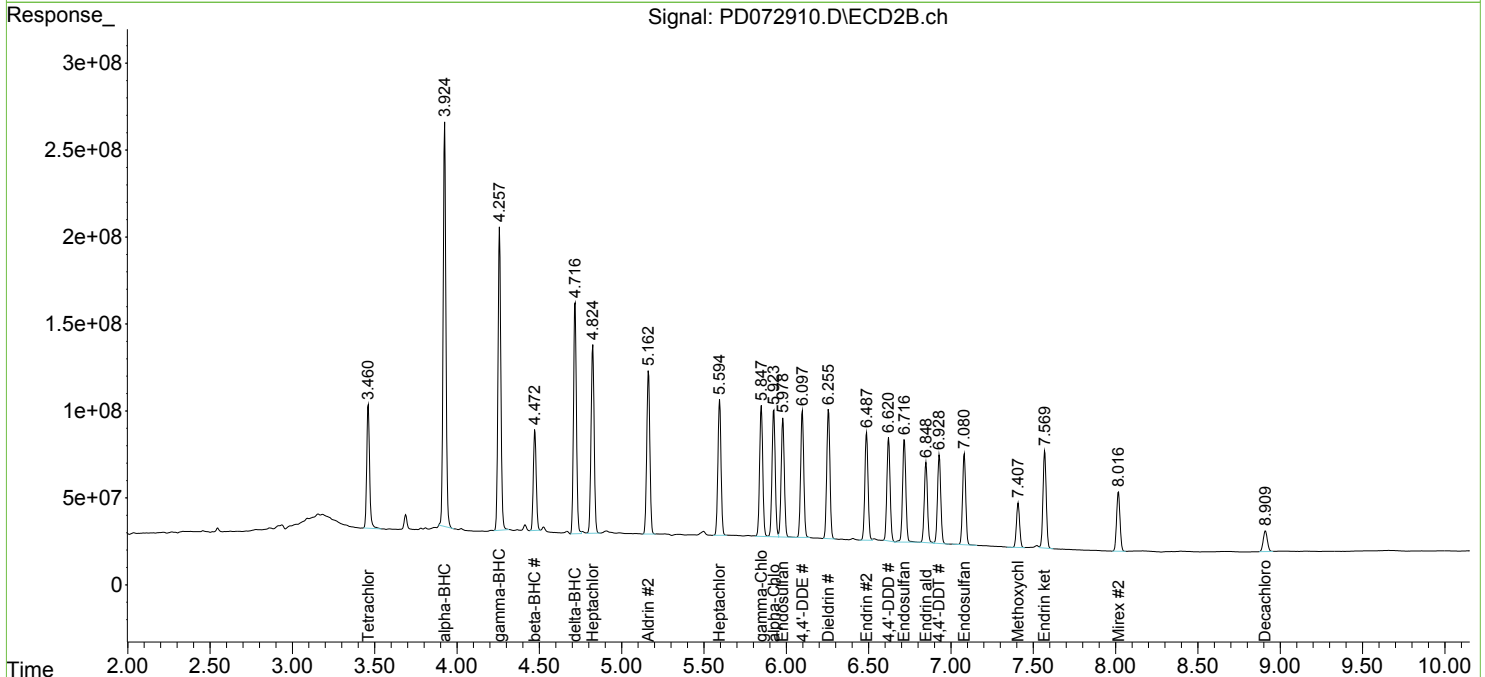
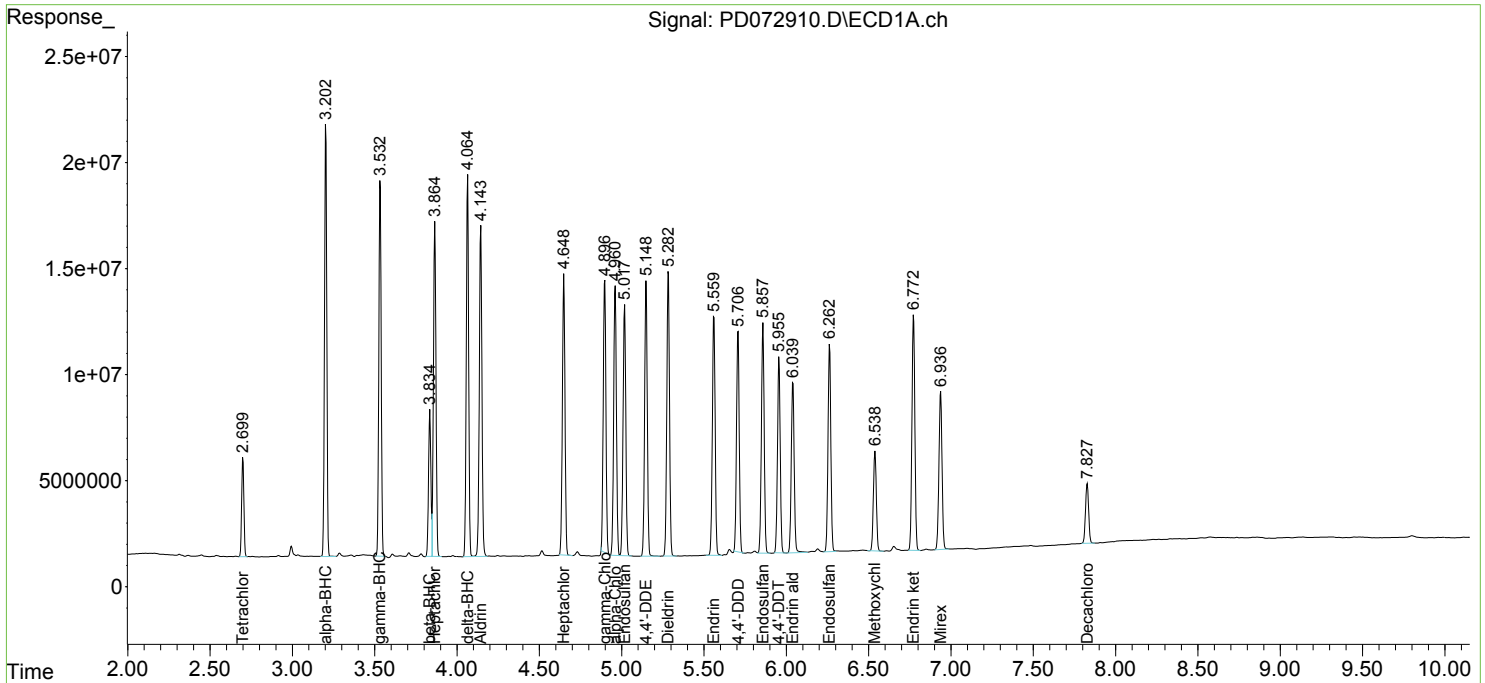
(f)=RT Delta > 1/2 Window (#)=Amounts differ by > 25% (m)=manual int.

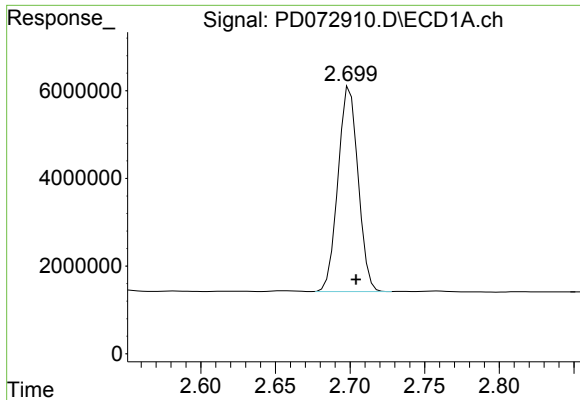
Data Path : Z:\pestpcbsrv\HPCHEM1\ECD_D\Data\PD110922\
 Data File : PD072910.D
 Signal(s) : Signal #1: ECD1A.ch Signal #2: ECD2B.ch
 Acq On : 09 Nov 2022 18:23
 Operator : AR\AJ
 Sample : N5495-10MSD
 Misc :
 ALS Vial : 35 Sample Multiplier: 1

Instrument :
 ECD_D
 ClientSampleId :
 DUP-01MSD

Integration File signal 1: autoint1.e
 Integration File signal 2: autoint2.e
 Quant Time: Nov 09 21:20:25 2022
 Quant Method : Z:\pestpcbsrv\HPCHEM1\ECD_D\Method\PD102822.M
 Quant Title : GC Extractables
 QLast Update : Fri Oct 28 15:29:46 2022
 Response via : Initial Calibration
 Integrator: ChemStation

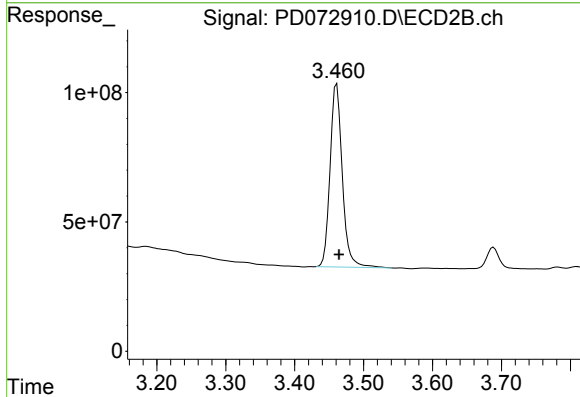
Volume Inj. : 2 µl
 Signal #1 Phase : ZB-MR2 Signal #2 Phase: ZB-MR1
 Signal #1 Info : 30M x 0.32mm x0.2 Signal #2 Info : 30M x 0.32mm x 0.50µm



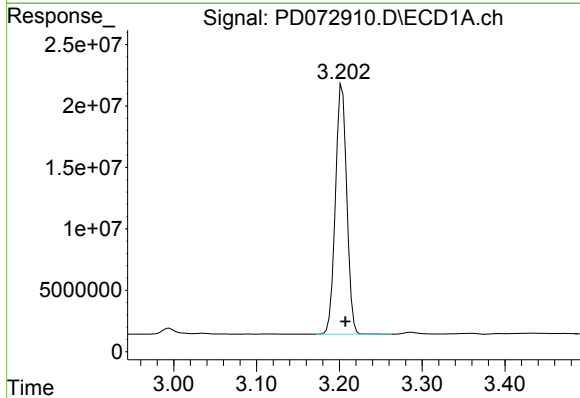


#1 Tetrachloro-m-xylene
 R.T.: 2.700 min
 Delta R.T.: -0.004 min
 Response: 43924722
 Conc: 21.42 ng/ml

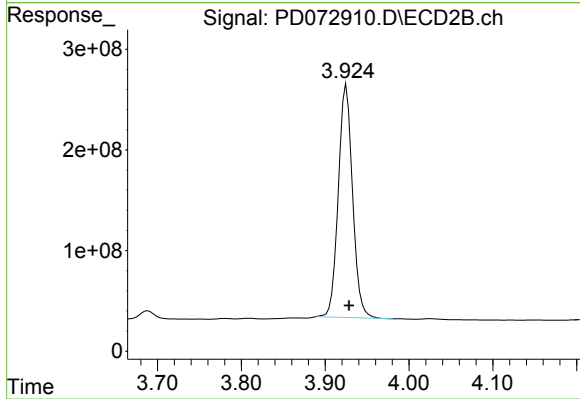
Instrument :
 ECD_D
 ClientSampleId :
 DUP-01MSD



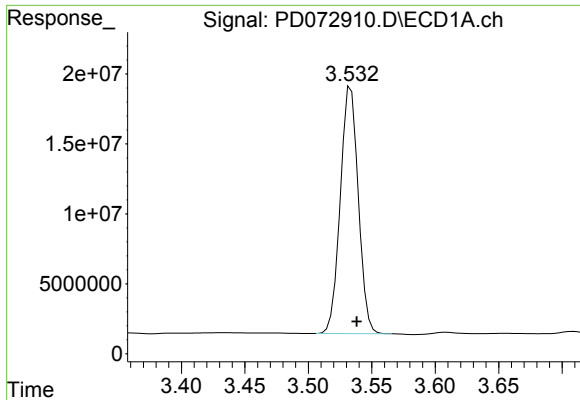
#1 Tetrachloro-m-xylene
 R.T.: 3.461 min
 Delta R.T.: -0.003 min
 Response: 872500392
 Conc: 25.28 ng/ml



#2 alpha-BHC
 R.T.: 3.203 min
 Delta R.T.: -0.004 min
 Response: 193457980
 Conc: 58.49 ng/ml

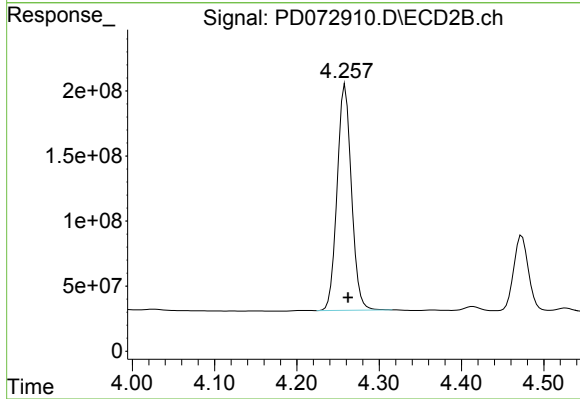


#2 alpha-BHC
 R.T.: 3.925 min
 Delta R.T.: -0.003 min
 Response: 2724391841
 Conc: 57.76 ng/ml

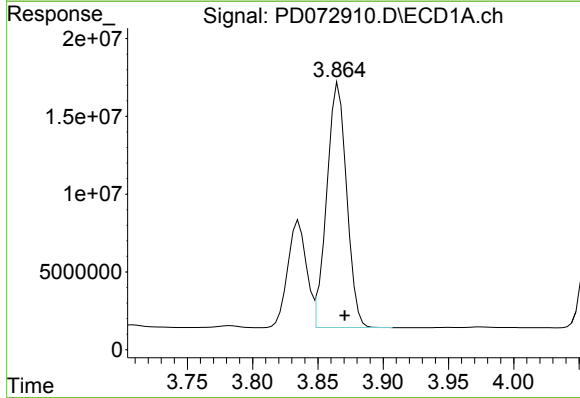


#3 gamma-BHC (Lindane)
 R.T.: 3.534 min
 Delta R.T.: -0.004 min
 Response: 174355089
 Conc: 57.96 ng/ml

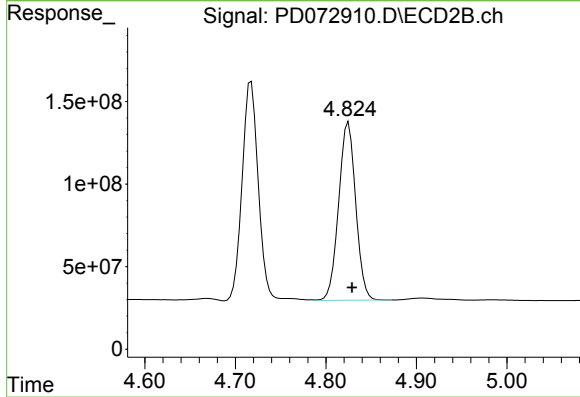
Instrument :
 ECD_D
 ClientSampleId :
 DUP-01MSD



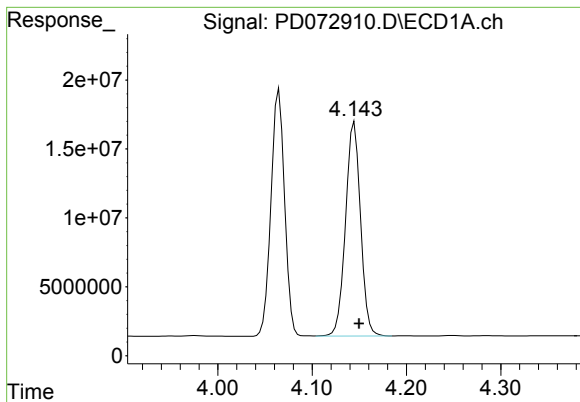
#3 gamma-BHC (Lindane)
 R.T.: 4.259 min
 Delta R.T.: -0.004 min
 Response: 2099210472
 Conc: 57.13 ng/ml



#4 Heptachlor
 R.T.: 3.866 min
 Delta R.T.: -0.005 min
 Response: 166660486
 Conc: 55.24 ng/ml

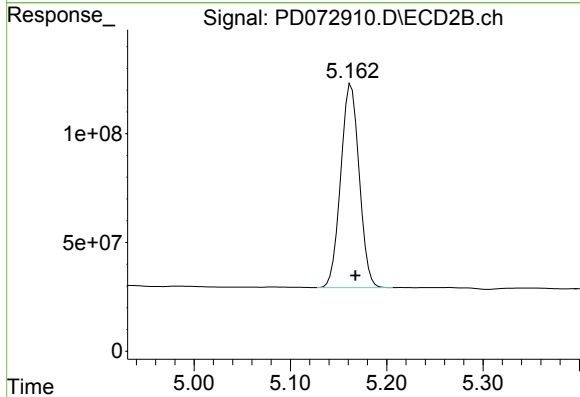


#4 Heptachlor
 R.T.: 4.825 min
 Delta R.T.: -0.004 min
 Response: 1409245277
 Conc: 54.64 ng/ml

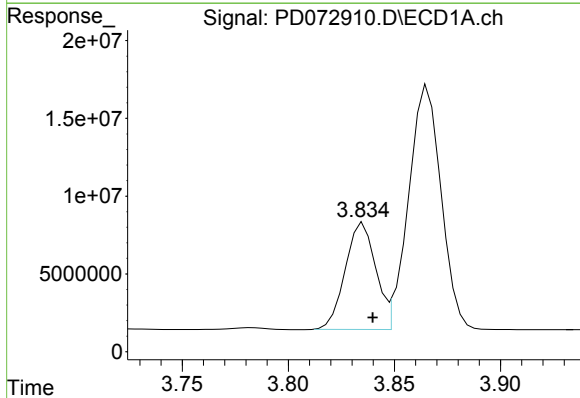


#5 Aldrin
 R.T.: 4.145 min
 Delta R.T.: -0.005 min
 Response: 172087143
 Conc: 59.62 ng/ml

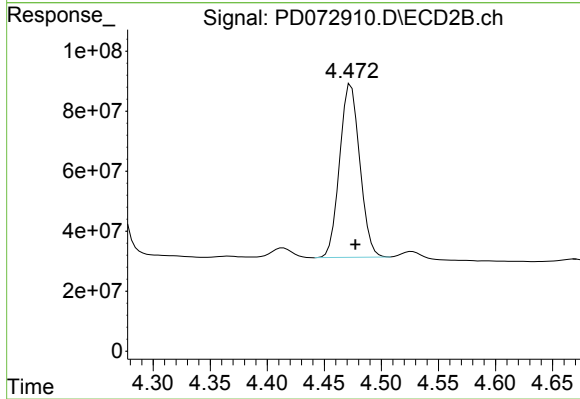
Instrument :
 ECD_D
 ClientSampleId :
 DUP-01MSD



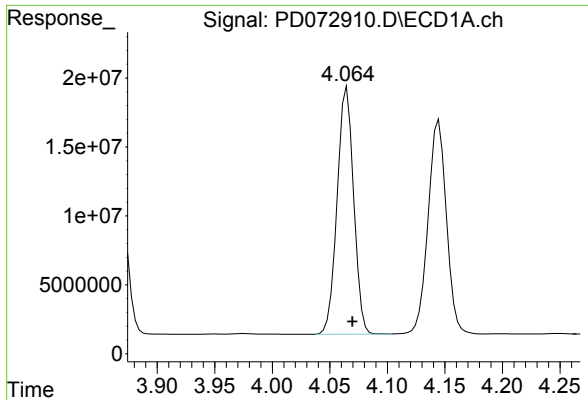
#5 Aldrin
 R.T.: 5.163 min
 Delta R.T.: -0.004 min
 Response: 1243800741
 Conc: 58.44 ng/ml



#6 beta-BHC
 R.T.: 3.835 min
 Delta R.T.: -0.005 min
 Response: 68426594
 Conc: 53.92 ng/ml

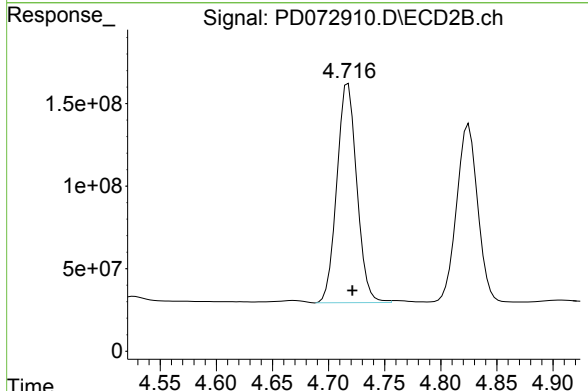


#6 beta-BHC
 R.T.: 4.473 min
 Delta R.T.: -0.004 min
 Response: 711371368
 Conc: 50.60 ng/ml

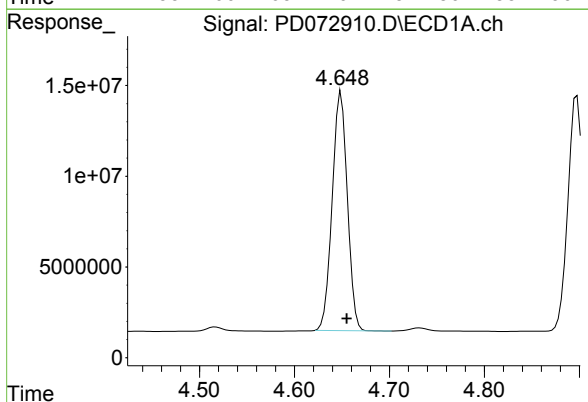


#7 delta-BHC
 R.T.: 4.065 min
 Delta R.T.: -0.005 min
 Response: 179527924
 Conc: 59.01 ng/ml

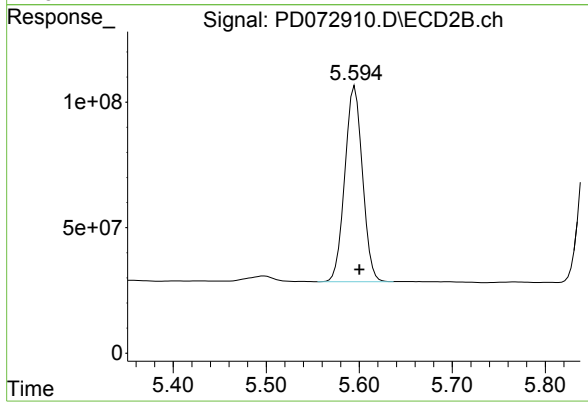
Instrument :
 ECD_D
 ClientSampleId :
 DUP-01MSD



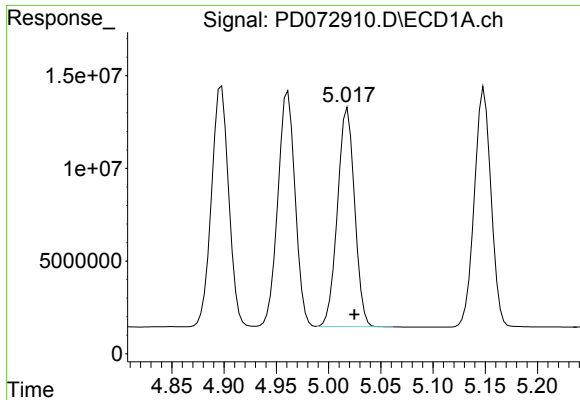
#7 delta-BHC
 R.T.: 4.718 min
 Delta R.T.: -0.004 min
 Response: 1644121818
 Conc: 56.96 ng/ml



#8 Heptachlor epoxide
 R.T.: 4.649 min
 Delta R.T.: -0.006 min
 Response: 146048154
 Conc: 56.23 ng/ml



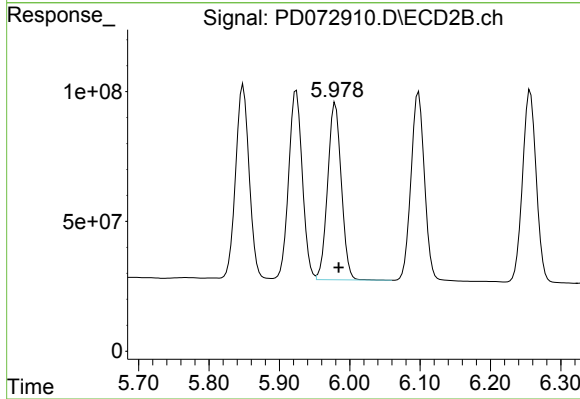
#8 Heptachlor epoxide
 R.T.: 5.595 min
 Delta R.T.: -0.005 min
 Response: 1026162091
 Conc: 56.98 ng/ml



#9 Endosulfan I

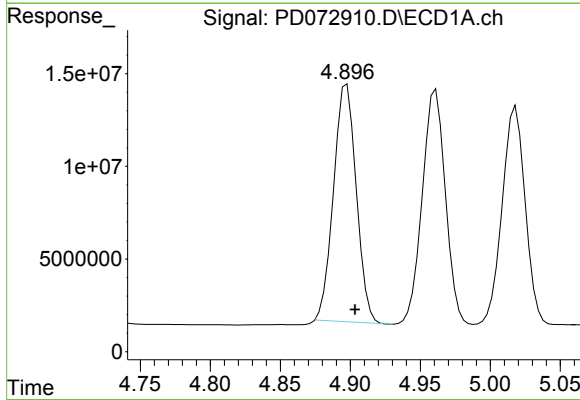
R.T.: 5.018 min
 Delta R.T.: -0.006 min
 Response: 134488374
 Conc: 56.02 ng/ml

Instrument :
 ECD_D
 ClientSampleId :
 DUP-01MSD



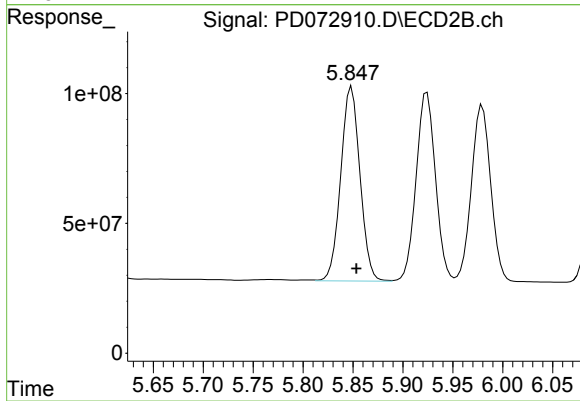
#9 Endosulfan I

R.T.: 5.980 min
 Delta R.T.: -0.005 min
 Response: 920298256
 Conc: 56.35 ng/ml



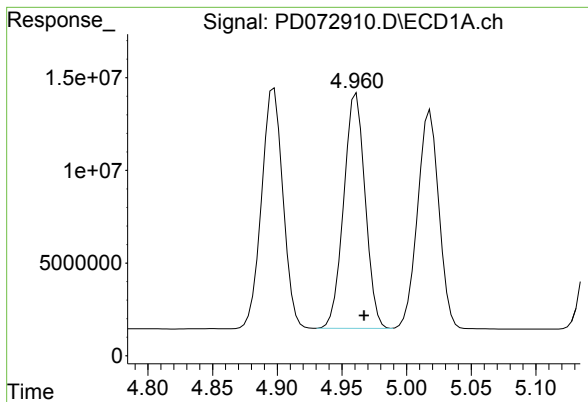
#10 gamma-Chlordane

R.T.: 4.897 min
 Delta R.T.: -0.006 min
 Response: 144462722
 Conc: 54.64 ng/ml



#10 gamma-Chlordane

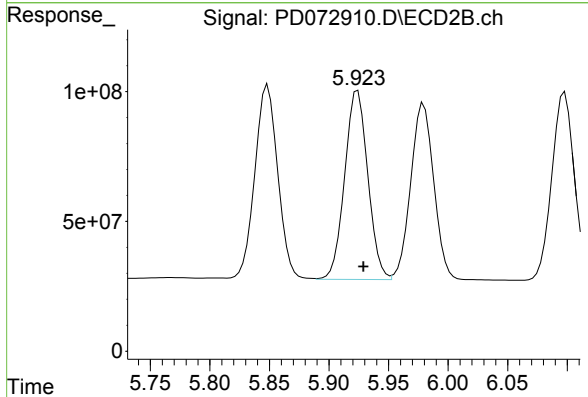
R.T.: 5.849 min
 Delta R.T.: -0.005 min
 Response: 1002135645
 Conc: 57.52 ng/ml



#11 alpha-Chlordane

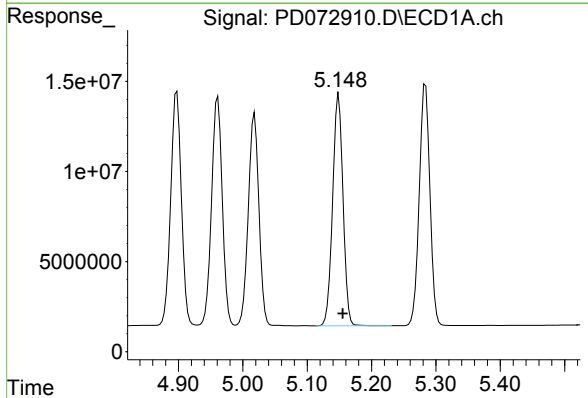
R.T.: 4.961 min
 Delta R.T.: -0.006 min
 Response: 145858879
 Conc: 56.40 ng/ml

Instrument :
 ECD_D
 ClientSampleId :
 DUP-01MSD



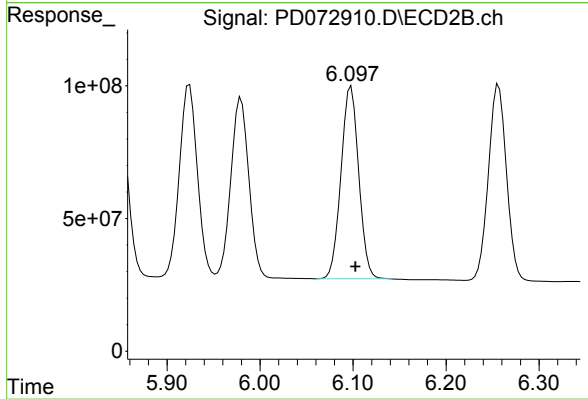
#11 alpha-Chlordane

R.T.: 5.924 min
 Delta R.T.: -0.005 min
 Response: 984523370
 Conc: 57.62 ng/ml



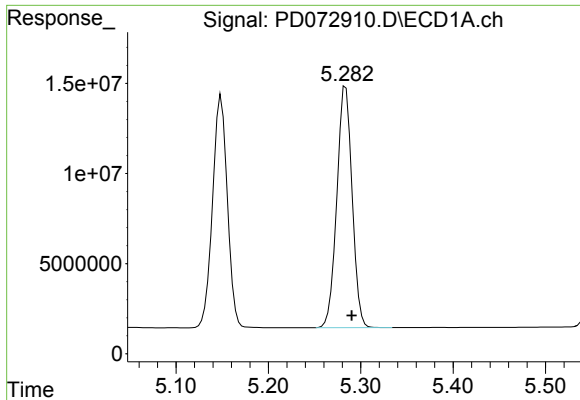
#12 4,4'-DDE

R.T.: 5.149 min
 Delta R.T.: -0.006 min
 Response: 143947652
 Conc: 58.76 ng/ml



#12 4,4'-DDE

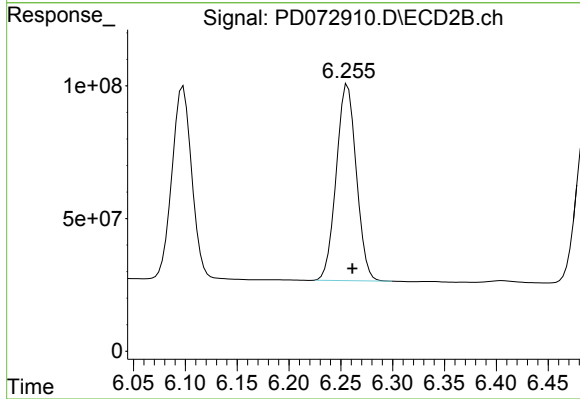
R.T.: 6.098 min
 Delta R.T.: -0.005 min
 Response: 959879898
 Conc: 57.86 ng/ml



#13 Dieldrin

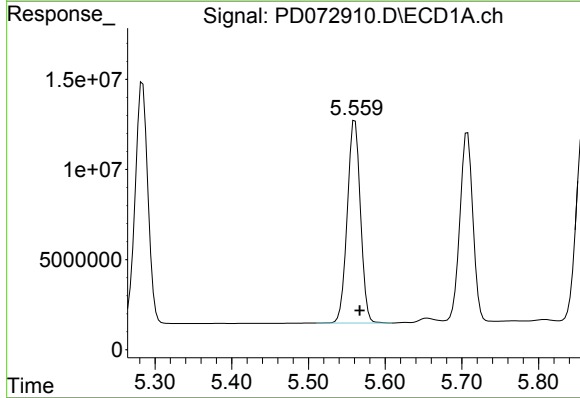
R.T.: 5.284 min
 Delta R.T.: -0.006 min
 Response: 154005569
 Conc: 60.72 ng/ml

Instrument :
 ECD_D
 ClientSampleId :
 DUP-01MSD



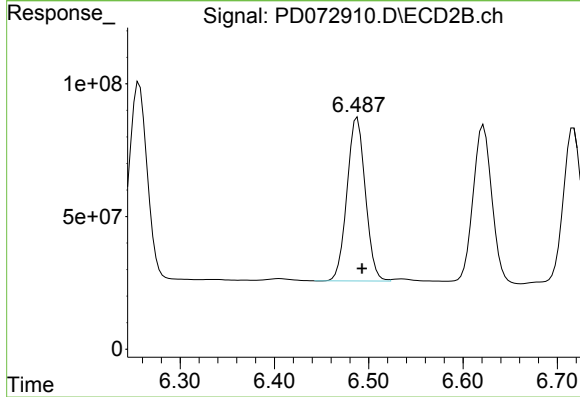
#13 Dieldrin

R.T.: 6.257 min
 Delta R.T.: -0.005 min
 Response: 995760898
 Conc: 58.40 ng/ml



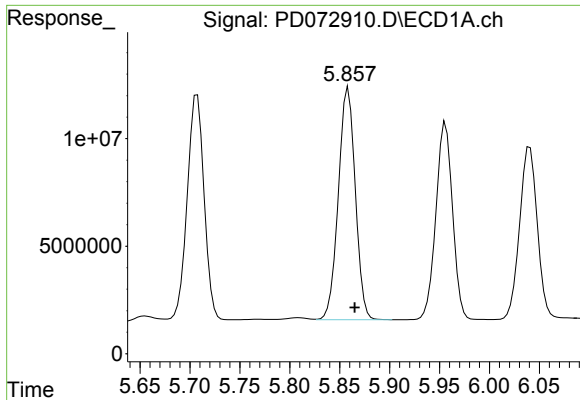
#14 Endrin

R.T.: 5.561 min
 Delta R.T.: -0.006 min
 Response: 135168801
 Conc: 62.58 ng/ml



#14 Endrin

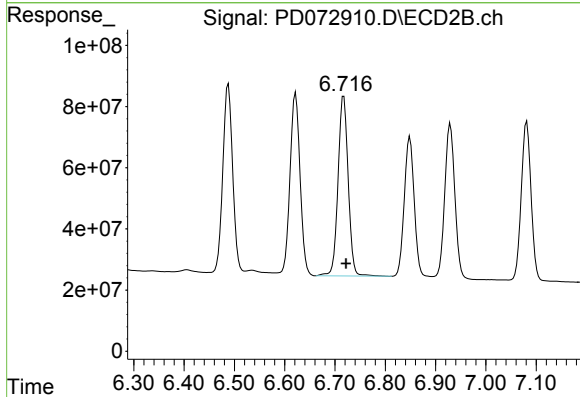
R.T.: 6.488 min
 Delta R.T.: -0.005 min
 Response: 833523525
 Conc: 60.00 ng/ml



#15 Endosulfan II

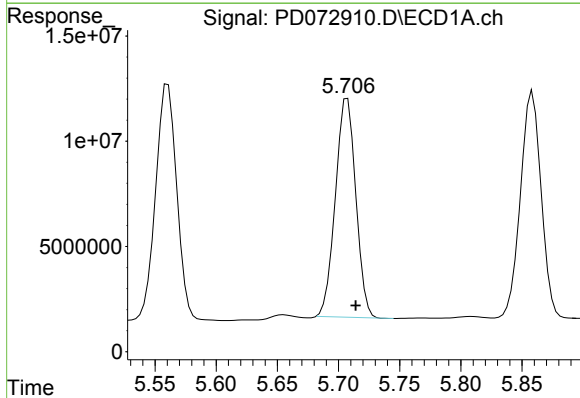
R.T.: 5.859 min
 Delta R.T.: -0.007 min
 Response: 127404641
 Conc: 60.64 ng/ml

Instrument :
 ECD_D
 ClientSampleId :
 DUP-01MSD



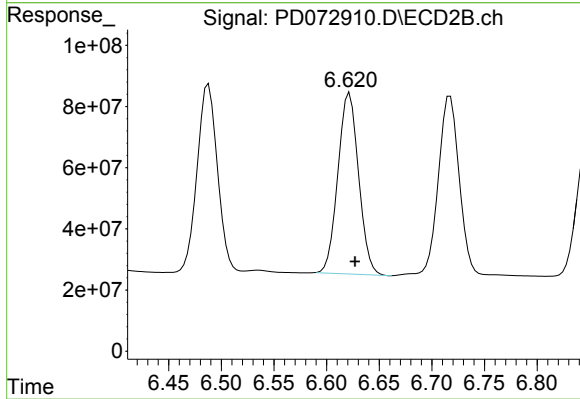
#15 Endosulfan II

R.T.: 6.717 min
 Delta R.T.: -0.005 min
 Response: 825003808
 Conc: 61.12 ng/ml



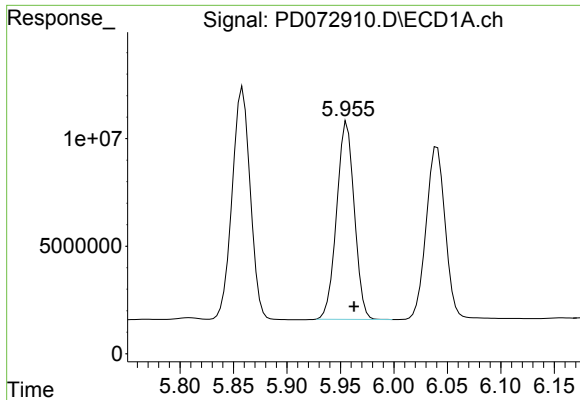
#16 4,4'-DDD

R.T.: 5.707 min
 Delta R.T.: -0.007 min
 Response: 120624212
 Conc: 58.95 ng/ml



#16 4,4'-DDD

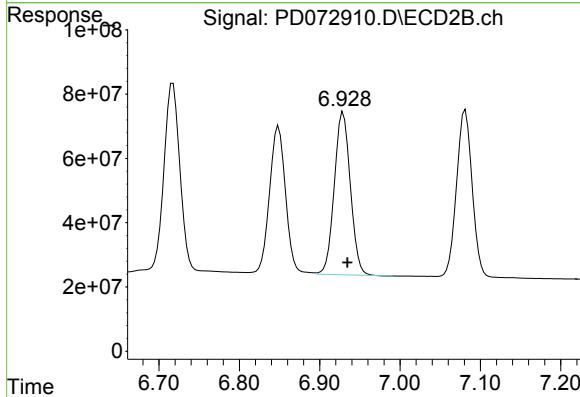
R.T.: 6.622 min
 Delta R.T.: -0.005 min
 Response: 812333196
 Conc: 58.97 ng/ml



#17 4,4'-DDT

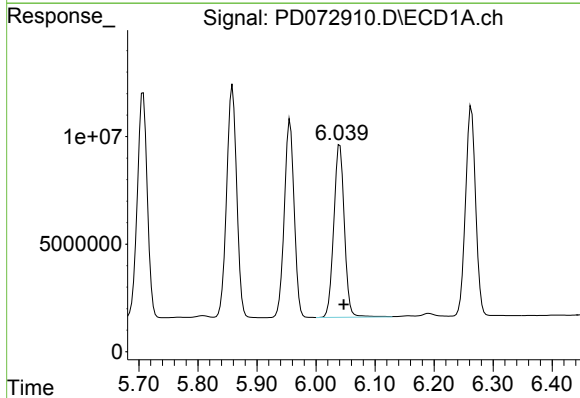
R.T.: 5.956 min
 Delta R.T.: -0.007 min
 Response: 105710215
 Conc: 53.41 ng/ml

Instrument :
 ECD_D
 ClientSampleId :
 DUP-01MSD



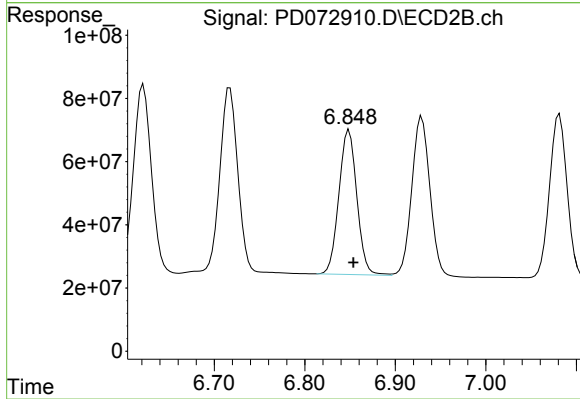
#17 4,4'-DDT

R.T.: 6.929 min
 Delta R.T.: -0.005 min
 Response: 704069509
 Conc: 52.33 ng/ml



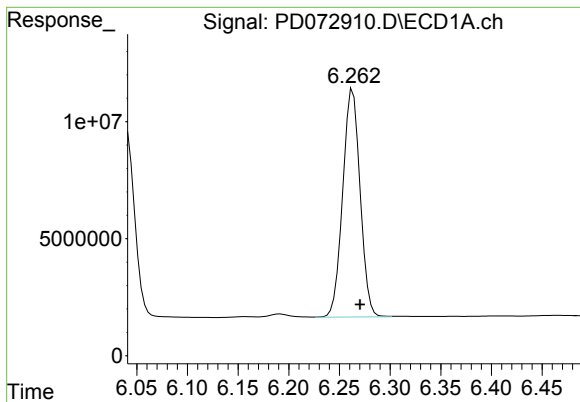
#18 Endrin aldehyde

R.T.: 6.040 min
 Delta R.T.: -0.007 min
 Response: 100190463
 Conc: 60.20 ng/ml



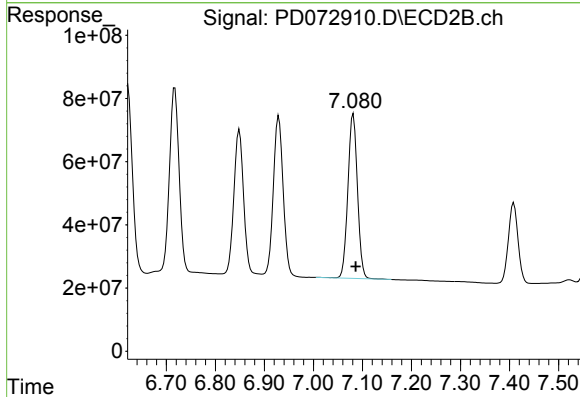
#18 Endrin aldehyde

R.T.: 6.849 min
 Delta R.T.: -0.005 min
 Response: 631901192
 Conc: 58.68 ng/ml

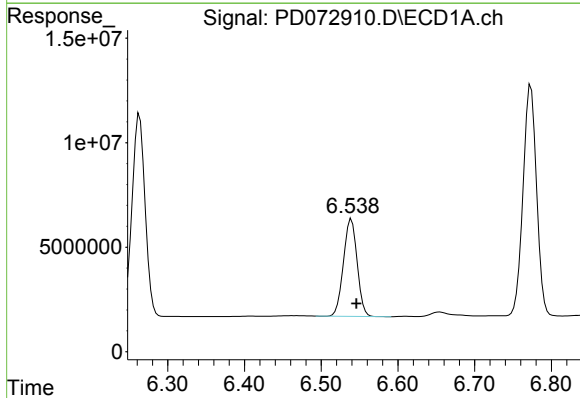


#19 Endosulfan Sulfate
 R.T.: 6.263 min
 Delta R.T.: -0.007 min
 Response: 116074633
 Conc: 55.67 ng/ml

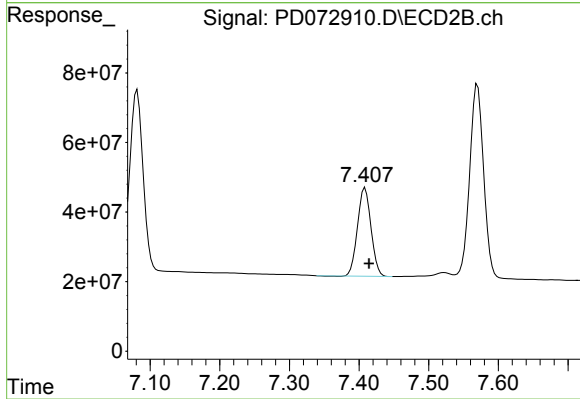
Instrument :
 ECD_D
 ClientSampleId :
 DUP-01MSD



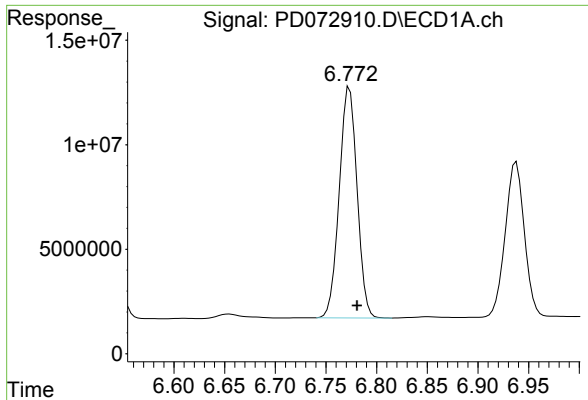
#19 Endosulfan Sulfate
 R.T.: 7.081 min
 Delta R.T.: -0.005 min
 Response: 705737604
 Conc: 56.35 ng/ml



#20 Methoxychlor
 R.T.: 6.539 min
 Delta R.T.: -0.007 min
 Response: 58035311
 Conc: 51.41 ng/ml

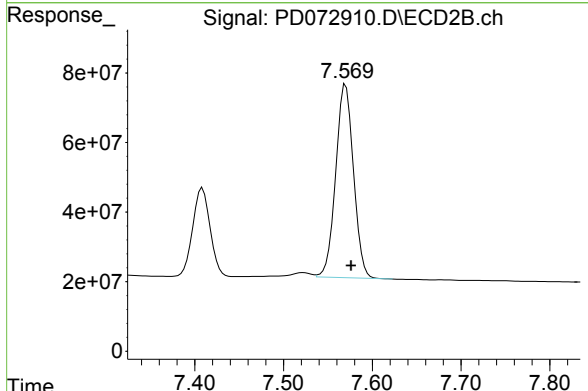


#20 Methoxychlor
 R.T.: 7.409 min
 Delta R.T.: -0.005 min
 Response: 343670196
 Conc: 53.09 ng/ml

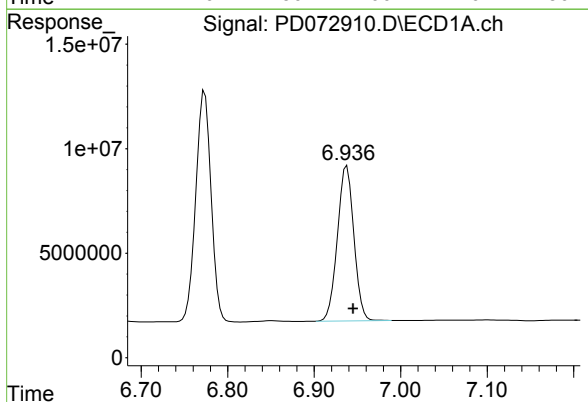


#21 Endrin ketone
 R.T.: 6.773 min
 Delta R.T.: -0.007 min
 Response: 135072678
 Conc: 54.08 ng/ml

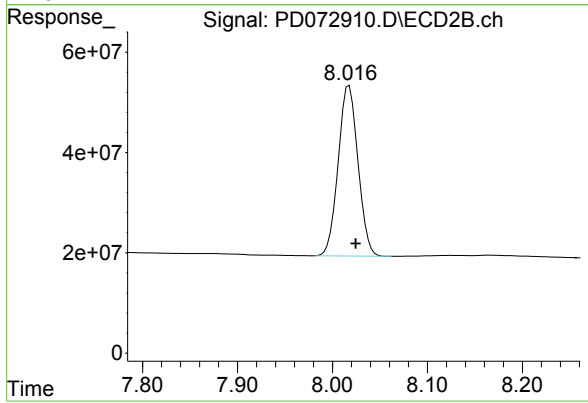
Instrument :
 ECD_D
 ClientSampleId :
 DUP-01MSD



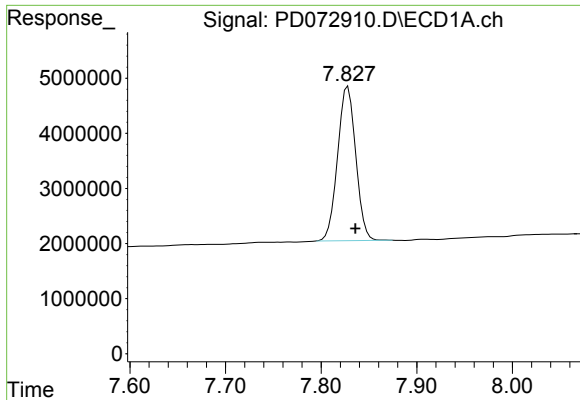
#21 Endrin ketone
 R.T.: 7.570 min
 Delta R.T.: -0.006 min
 Response: 773187416
 Conc: 54.65 ng/ml



#22 Mirex
 R.T.: 6.938 min
 Delta R.T.: -0.007 min
 Response: 97670550
 Conc: 54.98 ng/ml

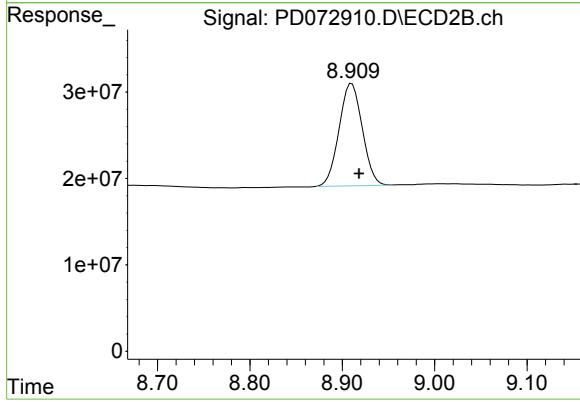


#22 Mirex
 R.T.: 8.018 min
 Delta R.T.: -0.007 min
 Response: 492681584
 Conc: 54.25 ng/ml



#28 Decachlorobiphenyl
R.T.: 7.828 min
Delta R.T.: -0.008 min
Response: 36948177
Conc: 19.22 ng/ml

Instrument :
ECD_D
ClientSampleId :
DUP-01MSD



#28 Decachlorobiphenyl
R.T.: 8.910 min
Delta R.T.: -0.008 min
Response: 207057854
Conc: 21.61 ng/ml