

Data Path : Z:\pestpcbsrv\HPCHEM1\ECD\_D\Data\PD110922\  
 Data File : PD072913.D  
 Signal(s) : Signal #1: ECD1A.ch Signal #2: ECD2B.ch  
 Acq On : 09 Nov 2022 19:03  
 Operator : AR\AJ  
 Sample : PSTDCCC050  
 Misc :  
 ALS Vial : 4 Sample Multiplier: 1

Instrument :  
 ECD\_D  
 ClientSampleId :  
 PSTDCCC050

Integration File signal 1: autoint1.e  
 Integration File signal 2: autoint2.e  
 Quant Time: Nov 09 21:22:34 2022  
 Quant Method : Z:\pestpcbsrv\HPCHEM1\ECD\_D\Method\PD102822.M  
 Quant Title : GC Extractables  
 QLast Update : Fri Oct 28 15:29:46 2022  
 Response via : Initial Calibration  
 Integrator: ChemStation

Volume Inj. : 2 µl  
 Signal #1 Phase : ZB-MR2 Signal #2 Phase: ZB-MR1  
 Signal #1 Info : 30M x 0.32mm x0.2 Signal #2 Info : 30M x 0.32mm x 0.50µm

Compound	RT#1	RT#2	Resp#1	Resp#2	ng/ml	ng/ml
System Monitoring Compounds						
1) SA Tetrachlo...	2.700	3.461	108.9E6	2027.3E6	53.114	58.732
28) SA Decachlor...	7.827	8.910	94235299	516.4E6	49.013	53.890
Target Compounds						
2) A alpha-BHC	3.203	3.925	184.7E6	2711.9E6	55.851	57.490
3) MA gamma-BHC...	3.533	4.258	166.1E6	2089.4E6	55.232	56.858
4) MA Heptachlor	3.866	4.825	156.4E6	1364.3E6	51.847	52.891
5) MB Aldrin	4.144	5.163	161.8E6	1179.7E6	56.073	55.422
6) B beta-BHC	3.835	4.473	68672057	791.5E6	54.115	56.300
7) B delta-BHC	4.064	4.717	172.1E6	1635.3E6	56.584	56.653
8) B Heptachlo...	4.649	5.595	143.5E6	1022.4E6	55.262	56.768
9) A Endosulfan I	5.018	5.980	132.0E6	900.9E6	54.979	55.160
10) B gamma-Chl...	4.897	5.848	144.5E6	969.7E6	54.675	55.656
11) B alpha-Chl...	4.960	5.924	142.5E6	944.4E6	55.096	55.268
12) B 4,4'-DDE	5.148	6.098	135.8E6	925.8E6	55.418	55.808
13) MA Dieldrin	5.283	6.256	137.7E6	944.7E6	54.286	55.409
14) MA Endrin	5.560	6.488	111.5E6	728.5E6	51.635	52.441
15) B Endosulfa...	5.858	6.717	113.3E6	744.0E6	53.939	55.122
16) A 4,4'-DDD	5.707	6.622	115.9E6	795.6E6	56.663	57.756
17) MA 4,4'-DDT	5.956	6.930	95095306	653.2E6	48.049	48.557
18) B Endrin al...	6.040	6.849	90292046	575.8E6	54.256	53.469
19) B Endosulfa...	6.263	7.081	115.2E6	680.1E6	55.270	54.295
20) A Methoxychlor	6.539	7.409	53198083	313.2E6	47.121	48.380
21) B Endrin ke...	6.773	7.570	132.8E6	756.3E6	53.156	53.453
22) Mirex	6.937	8.018	90071651	460.2E6	50.701	50.677

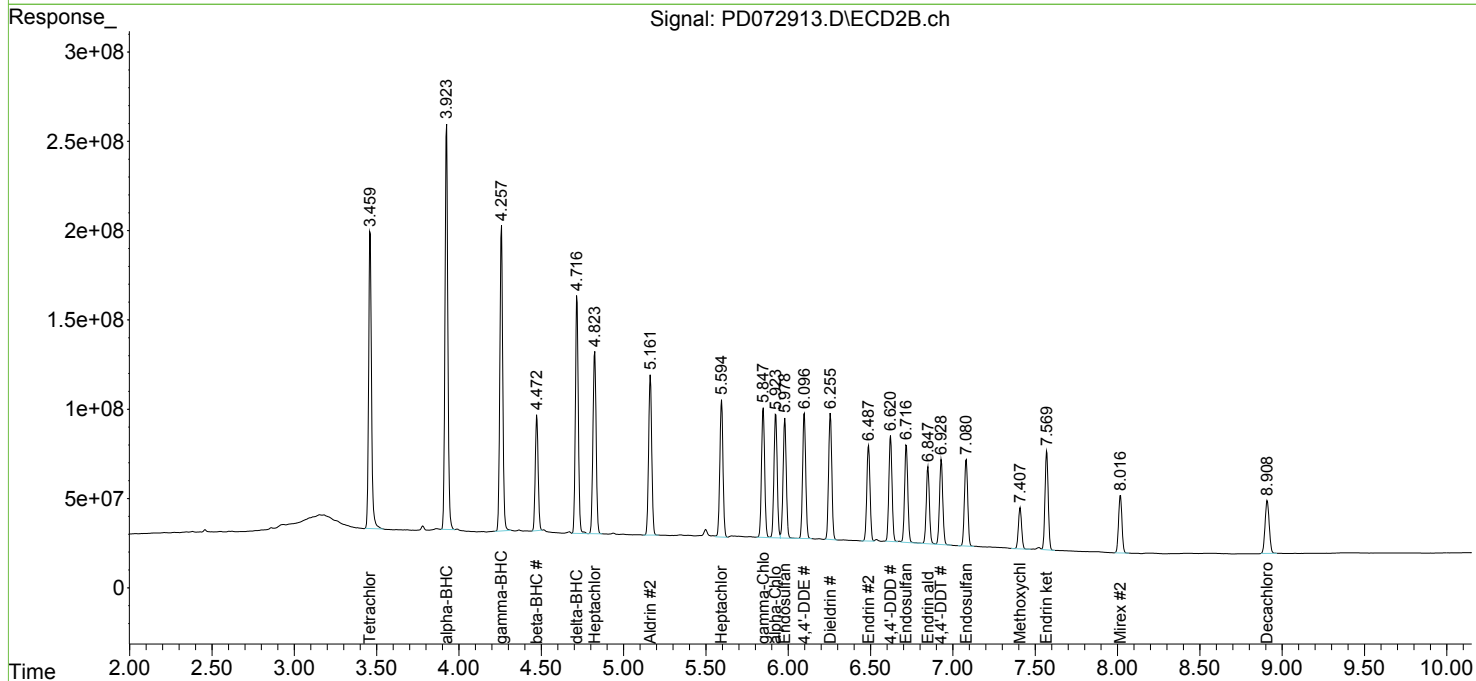
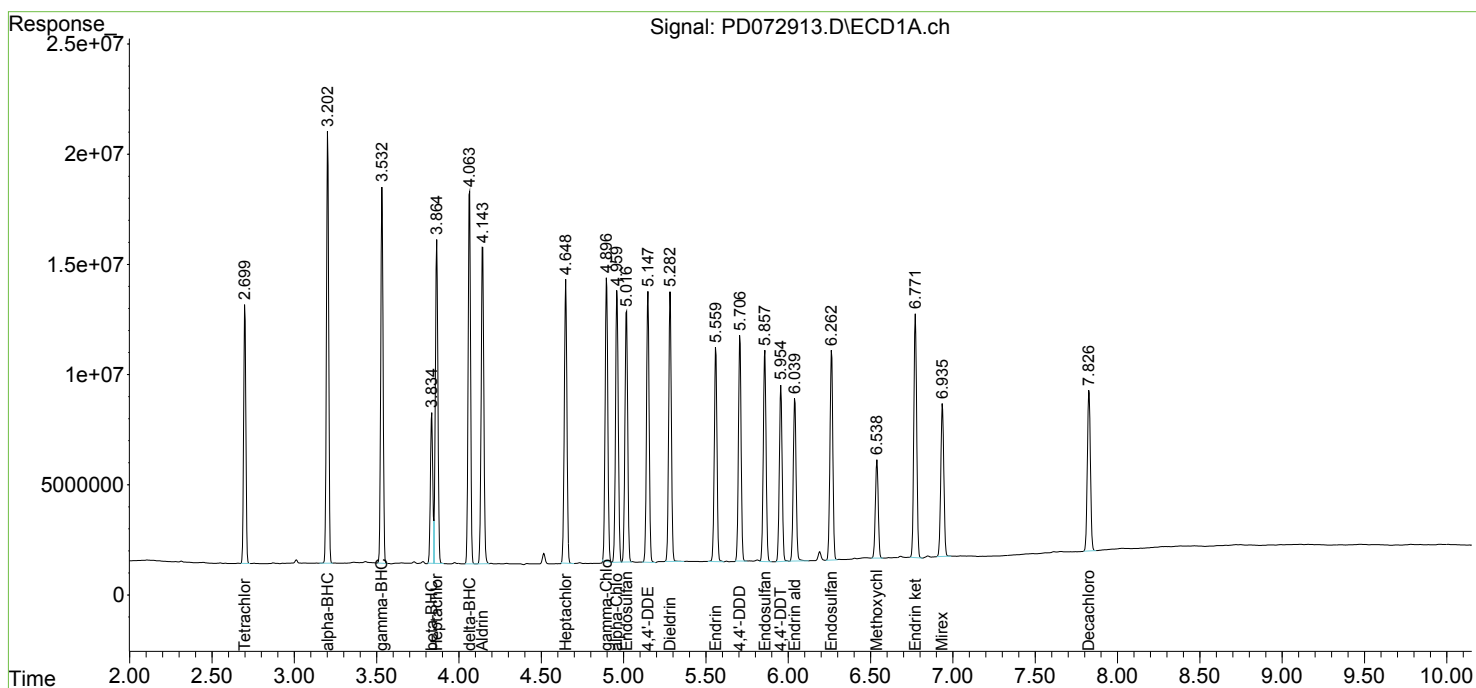
(f)=RT Delta > 1/2 Window (#)=Amounts differ by > 25% (m)=manual int.

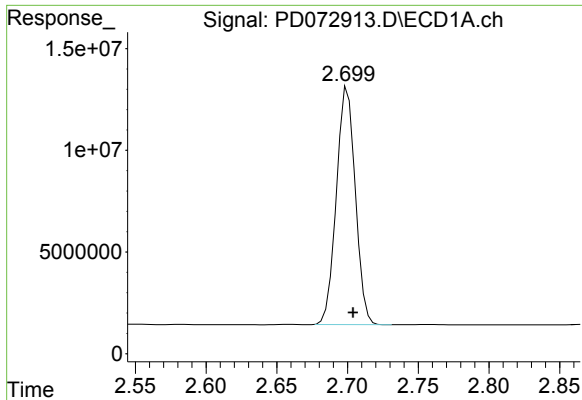
Data Path : Z:\pestpcbsrv\HPCHEM1\ECD\_D\Data\PD110922\  
 Data File : PD072913.D  
 Signal(s) : Signal #1: ECD1A.ch Signal #2: ECD2B.ch  
 Acq On : 09 Nov 2022 19:03  
 Operator : AR\AJ  
 Sample : PSTDCCC050  
 Misc :  
 ALS Vial : 4 Sample Multiplier: 1

Instrument :  
 ECD\_D  
 ClientSampleId :  
 PSTDCCC050

Integration File signal 1: autoint1.e  
 Integration File signal 2: autoint2.e  
 Quant Time: Nov 09 21:22:34 2022  
 Quant Method : Z:\pestpcbsrv\HPCHEM1\ECD\_D\Method\PD102822.M  
 Quant Title : GC Extractables  
 QLast Update : Fri Oct 28 15:29:46 2022  
 Response via : Initial Calibration  
 Integrator: ChemStation

Volume Inj. : 2 µl  
 Signal #1 Phase : ZB-MR2 Signal #2 Phase: ZB-MR1  
 Signal #1 Info : 30M x 0.32mm x0.2 Signal #2 Info : 30M x 0.32mm x 0.50µm

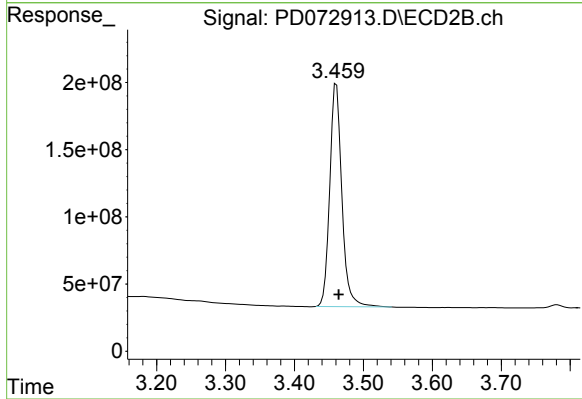




#1 Tetrachloro-m-xylene

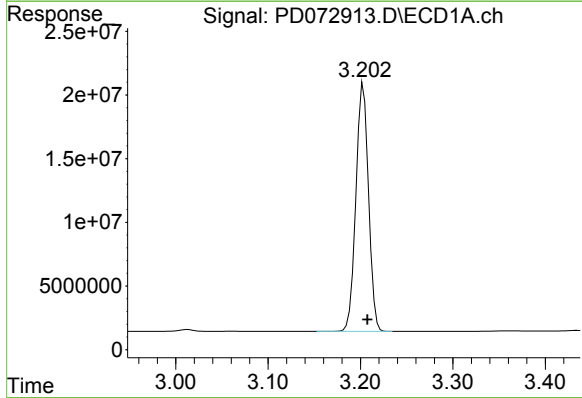
R.T.: 2.700 min  
 Delta R.T.: -0.004 min  
 Response: 108933256  
 Conc: 53.11 ng/ml

Instrument :  
 ECD\_D  
 ClientSampleId :  
 PSTDCCC050



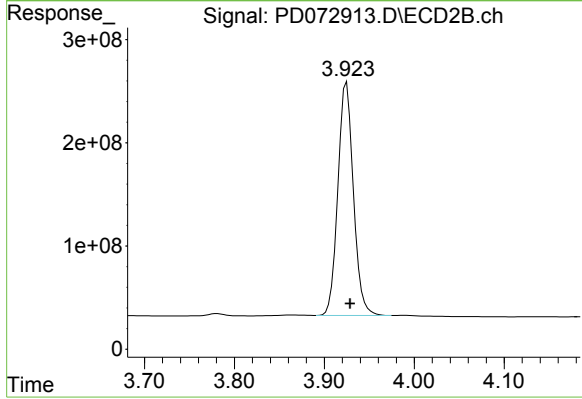
#1 Tetrachloro-m-xylene

R.T.: 3.461 min  
 Delta R.T.: -0.004 min  
 Response: 2027325867  
 Conc: 58.73 ng/ml



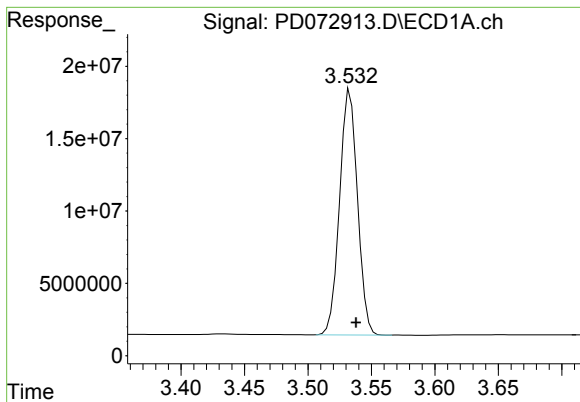
#2 alpha-BHC

R.T.: 3.203 min  
 Delta R.T.: -0.004 min  
 Response: 184741113  
 Conc: 55.85 ng/ml



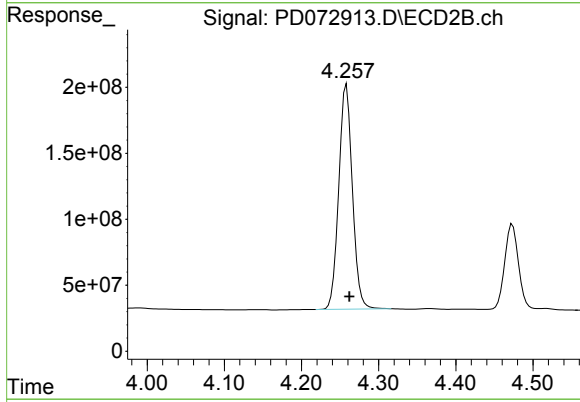
#2 alpha-BHC

R.T.: 3.925 min  
 Delta R.T.: -0.004 min  
 Response: 2711877234  
 Conc: 57.49 ng/ml

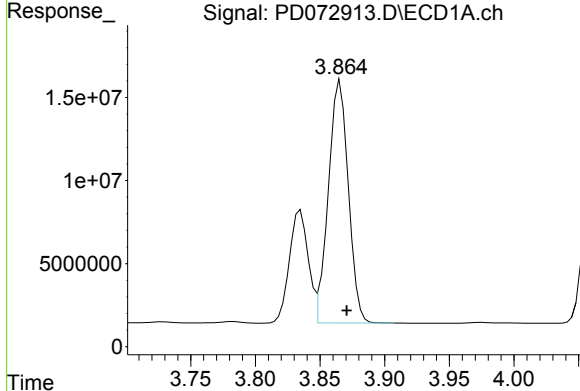


#3 gamma-BHC (Lindane)  
 R.T.: 3.533 min  
 Delta R.T.: -0.005 min  
 Response: 166144923  
 Conc: 55.23 ng/ml

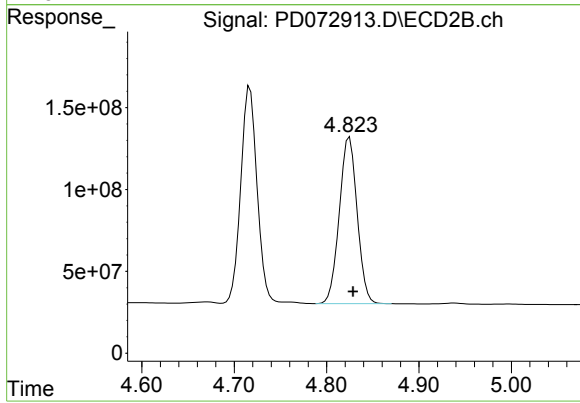
Instrument :  
 ECD\_D  
 ClientSampleId :  
 PSTDCCC050



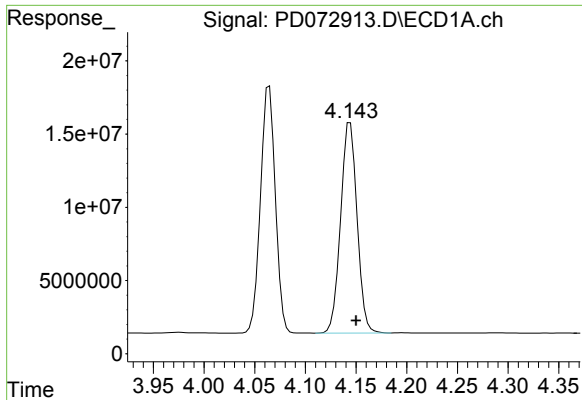
#3 gamma-BHC (Lindane)  
 R.T.: 4.258 min  
 Delta R.T.: -0.004 min  
 Response: 2089373398  
 Conc: 56.86 ng/ml



#4 Heptachlor  
 R.T.: 3.866 min  
 Delta R.T.: -0.005 min  
 Response: 156435473  
 Conc: 51.85 ng/ml

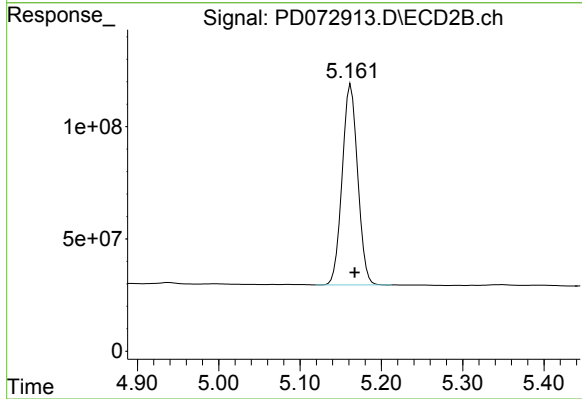


#4 Heptachlor  
 R.T.: 4.825 min  
 Delta R.T.: -0.004 min  
 Response: 1364251107  
 Conc: 52.89 ng/ml

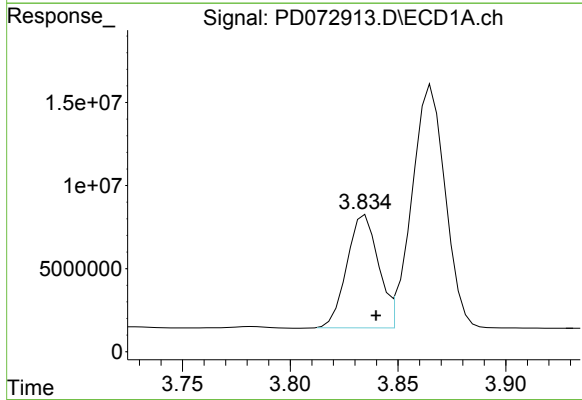


#5 Aldrin  
 R.T.: 4.144 min  
 Delta R.T.: -0.006 min  
 Response: 161845368  
 Conc: 56.07 ng/ml

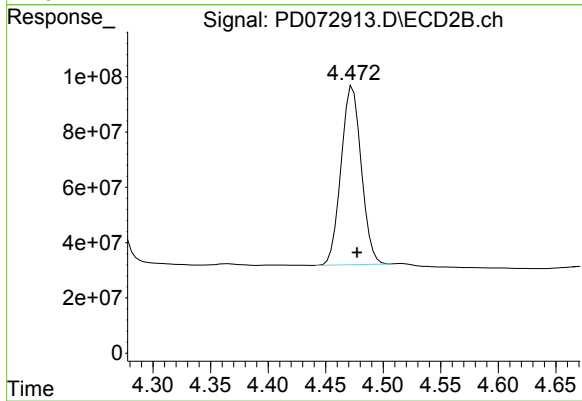
Instrument :  
 ECD\_D  
 ClientSampleId :  
 PSTDCCC050



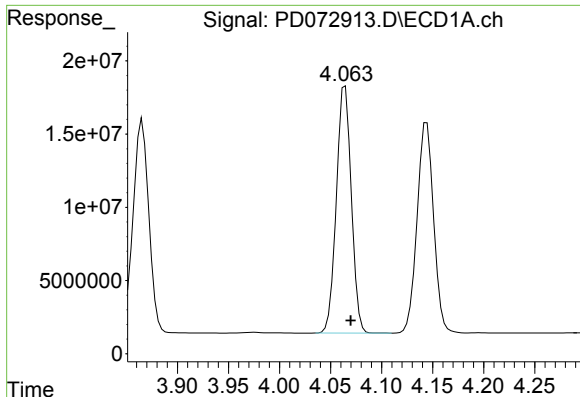
#5 Aldrin  
 R.T.: 5.163 min  
 Delta R.T.: -0.005 min  
 Response: 1179668379  
 Conc: 55.42 ng/ml



#6 beta-BHC  
 R.T.: 3.835 min  
 Delta R.T.: -0.005 min  
 Response: 68672057  
 Conc: 54.11 ng/ml



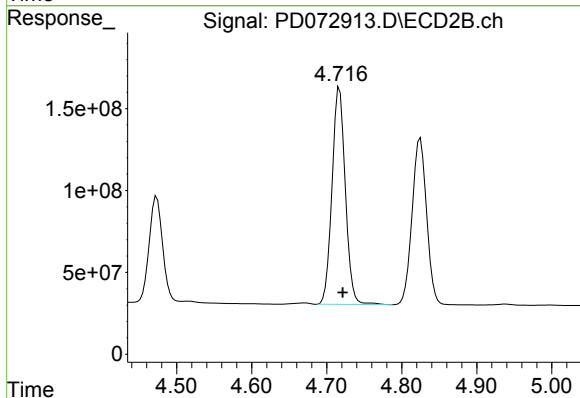
#6 beta-BHC  
 R.T.: 4.473 min  
 Delta R.T.: -0.004 min  
 Response: 791491379  
 Conc: 56.30 ng/ml



#7 delta-BHC

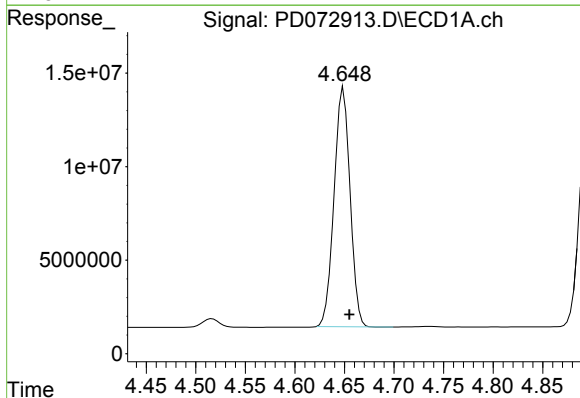
R.T.: 4.064 min  
 Delta R.T.: -0.005 min  
 Response: 172139825  
 Conc: 56.58 ng/ml

Instrument :  
 ECD\_D  
 ClientSampleId :  
 PSTDCCC050



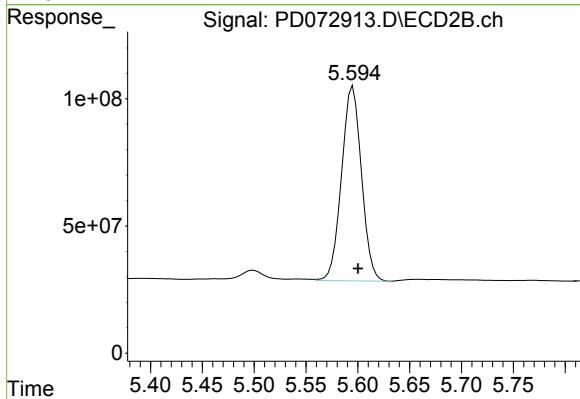
#7 delta-BHC

R.T.: 4.717 min  
 Delta R.T.: -0.004 min  
 Response: 1635336837  
 Conc: 56.65 ng/ml



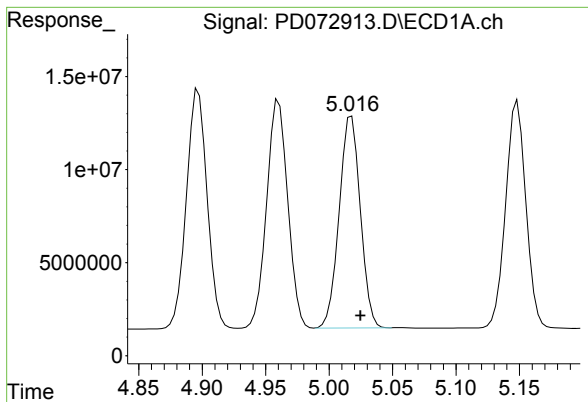
#8 Heptachlor epoxide

R.T.: 4.649 min  
 Delta R.T.: -0.006 min  
 Response: 143531106  
 Conc: 55.26 ng/ml



#8 Heptachlor epoxide

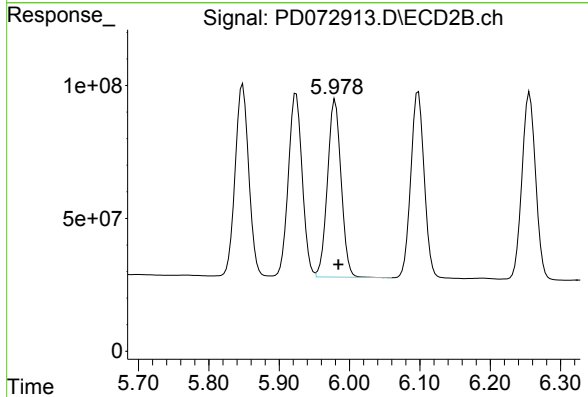
R.T.: 5.595 min  
 Delta R.T.: -0.005 min  
 Response: 1022372808  
 Conc: 56.77 ng/ml



#9 Endosulfan I

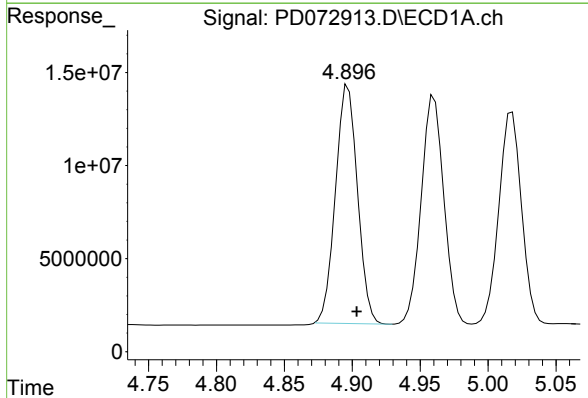
R.T.: 5.018 min  
 Delta R.T.: -0.007 min  
 Response: 131982025  
 Conc: 54.98 ng/ml

Instrument :  
 ECD\_D  
 ClientSampleId :  
 PSTDCCC050



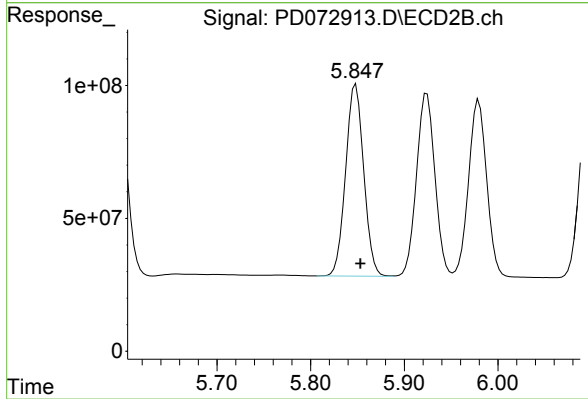
#9 Endosulfan I

R.T.: 5.980 min  
 Delta R.T.: -0.005 min  
 Response: 900883194  
 Conc: 55.16 ng/ml



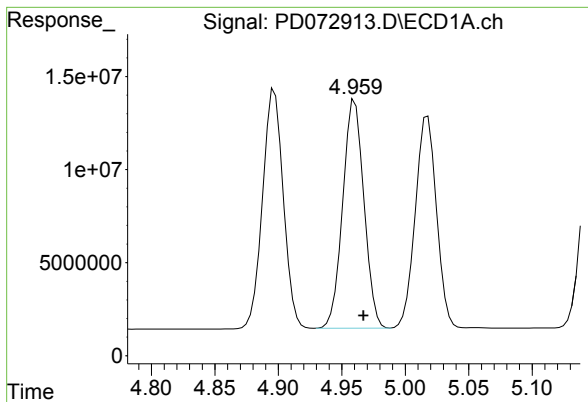
#10 gamma-Chlordane

R.T.: 4.897 min  
 Delta R.T.: -0.006 min  
 Response: 144547809  
 Conc: 54.68 ng/ml



#10 gamma-Chlordane

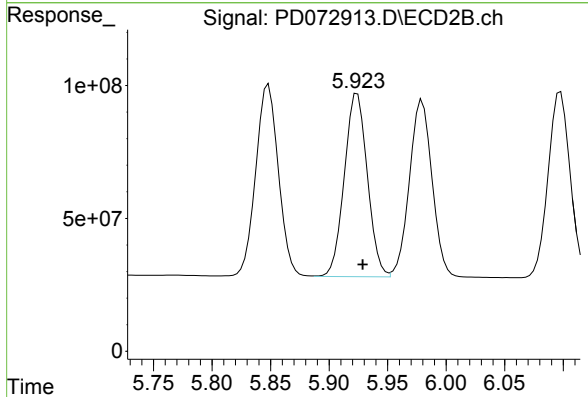
R.T.: 5.848 min  
 Delta R.T.: -0.005 min  
 Response: 969659827  
 Conc: 55.66 ng/ml



#11 alpha-Chlordane

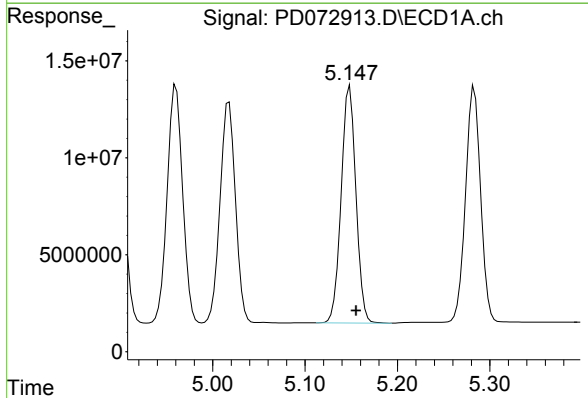
R.T.: 4.960 min  
 Delta R.T.: -0.007 min  
 Response: 142486837  
 Conc: 55.10 ng/ml

Instrument :  
 ECD\_D  
 ClientSampleId :  
 PSTDCCC050



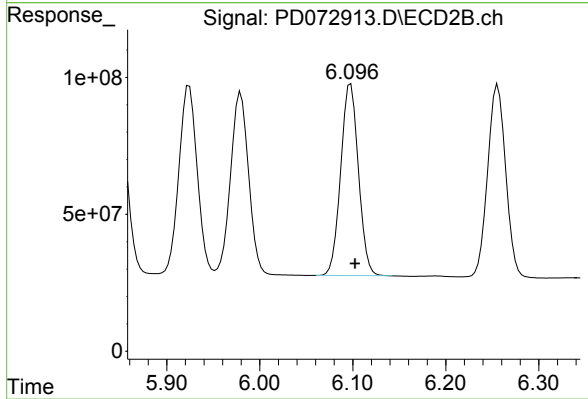
#11 alpha-Chlordane

R.T.: 5.924 min  
 Delta R.T.: -0.005 min  
 Response: 944387934  
 Conc: 55.27 ng/ml



#12 4,4'-DDE

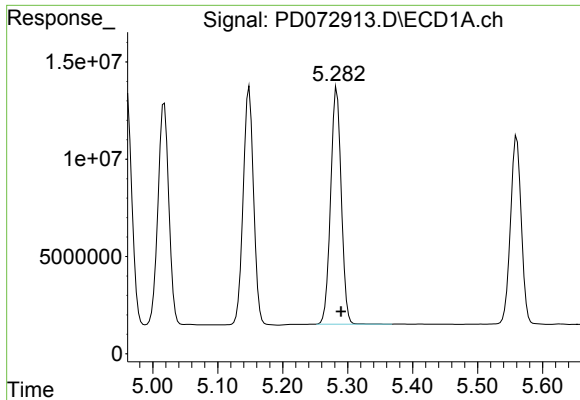
R.T.: 5.148 min  
 Delta R.T.: -0.007 min  
 Response: 135757301  
 Conc: 55.42 ng/ml



#12 4,4'-DDE

R.T.: 6.098 min  
 Delta R.T.: -0.005 min  
 Response: 925794649  
 Conc: 55.81 ng/ml

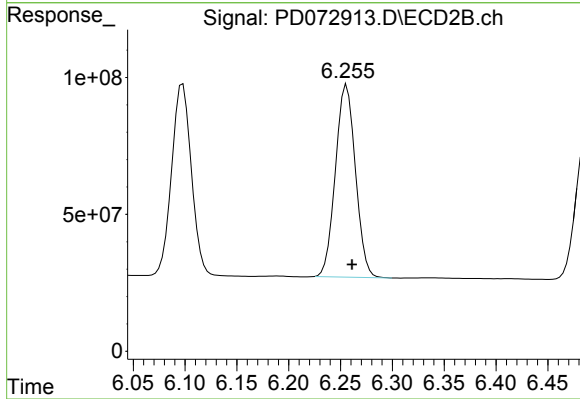




#13 Dieldrin

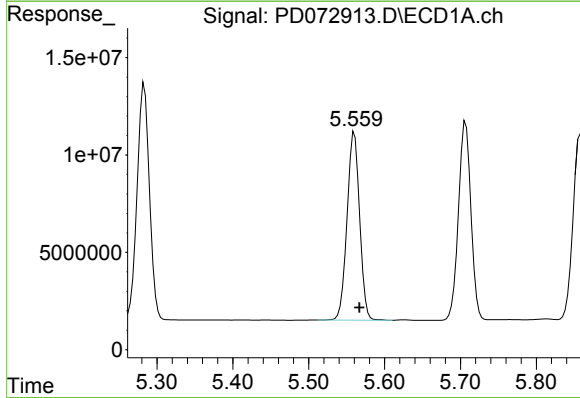
R.T.: 5.283 min  
 Delta R.T.: -0.007 min  
 Response: 137697719  
 Conc: 54.29 ng/ml

Instrument :  
 ECD\_D  
 ClientSampleId :  
 PSTDCCC050



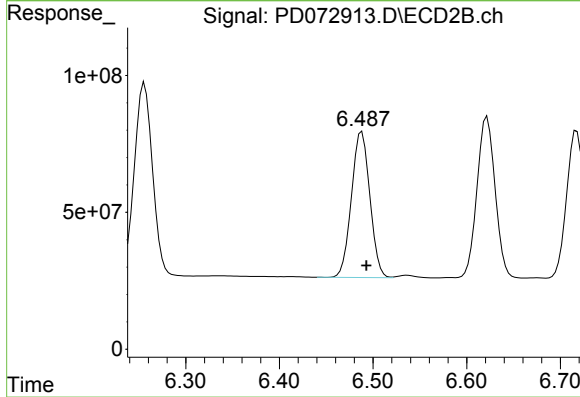
#13 Dieldrin

R.T.: 6.256 min  
 Delta R.T.: -0.005 min  
 Response: 944708460  
 Conc: 55.41 ng/ml



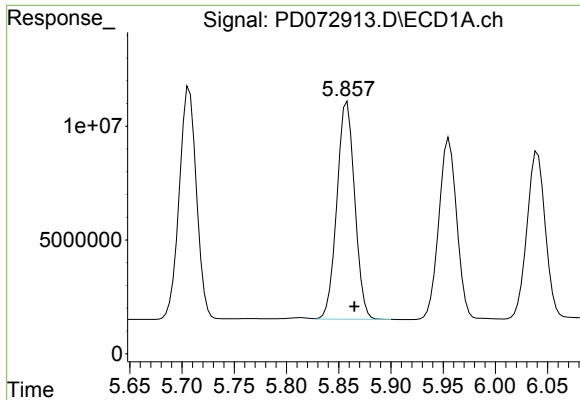
#14 Endrin

R.T.: 5.560 min  
 Delta R.T.: -0.007 min  
 Response: 111522716  
 Conc: 51.63 ng/ml



#14 Endrin

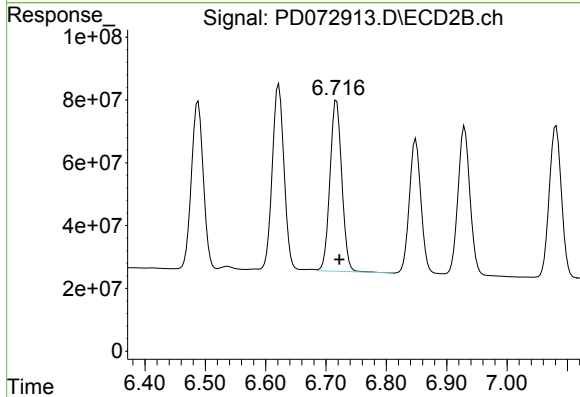
R.T.: 6.488 min  
 Delta R.T.: -0.005 min  
 Response: 728515339  
 Conc: 52.44 ng/ml



#15 Endosulfan II

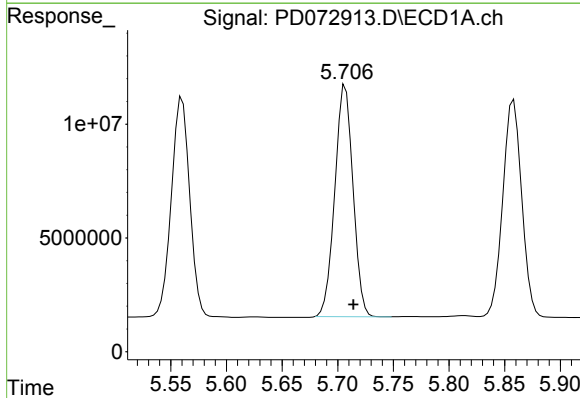
R.T.: 5.858 min  
 Delta R.T.: -0.007 min  
 Response: 113334294  
 Conc: 53.94 ng/ml

Instrument :  
 ECD\_D  
 ClientSampleId :  
 PSTDCCC050



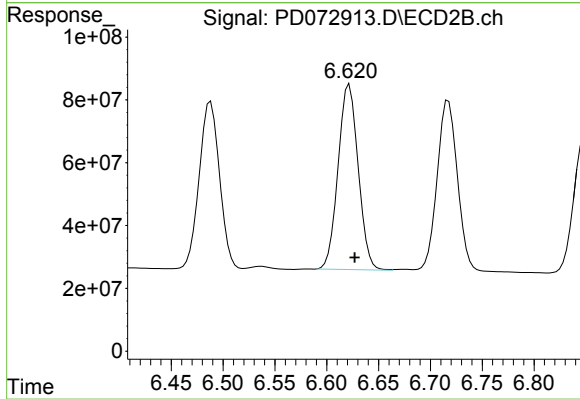
#15 Endosulfan II

R.T.: 6.717 min  
 Delta R.T.: -0.005 min  
 Response: 744028803  
 Conc: 55.12 ng/ml



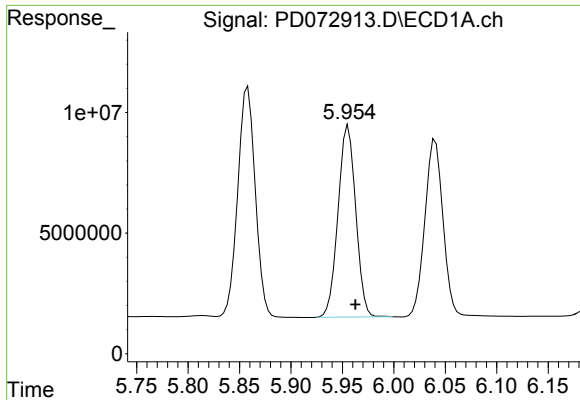
#16 4,4'-DDD

R.T.: 5.707 min  
 Delta R.T.: -0.007 min  
 Response: 115946147  
 Conc: 56.66 ng/ml



#16 4,4'-DDD

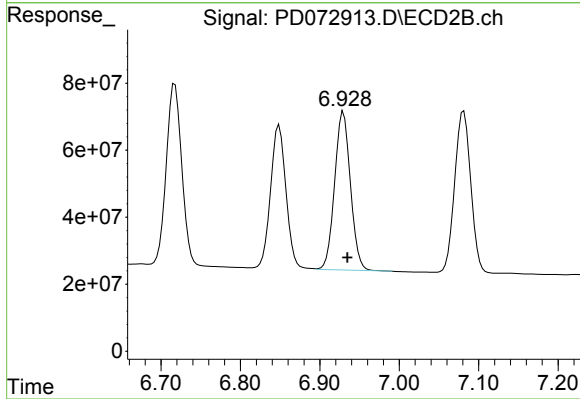
R.T.: 6.622 min  
 Delta R.T.: -0.005 min  
 Response: 795562881  
 Conc: 57.76 ng/ml



#17 4,4'-DDT

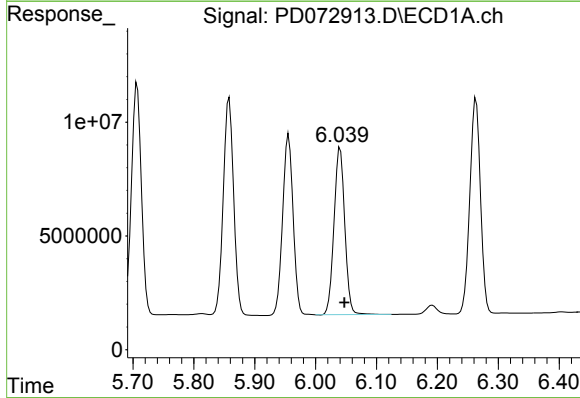
R.T.: 5.956 min  
 Delta R.T.: -0.007 min  
 Response: 95095306  
 Conc: 48.05 ng/ml

Instrument :  
 ECD\_D  
 ClientSampleId :  
 PSTDCCC050



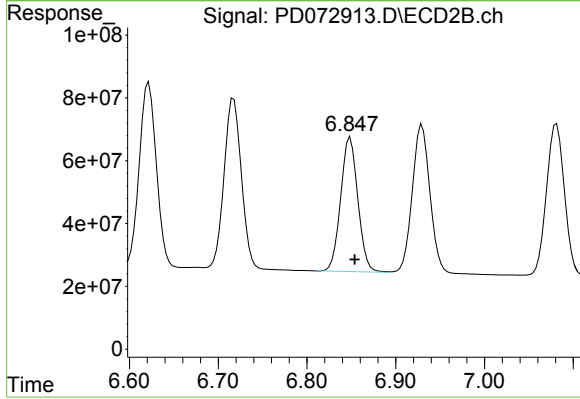
#17 4,4'-DDT

R.T.: 6.930 min  
 Delta R.T.: -0.005 min  
 Response: 653246699  
 Conc: 48.56 ng/ml



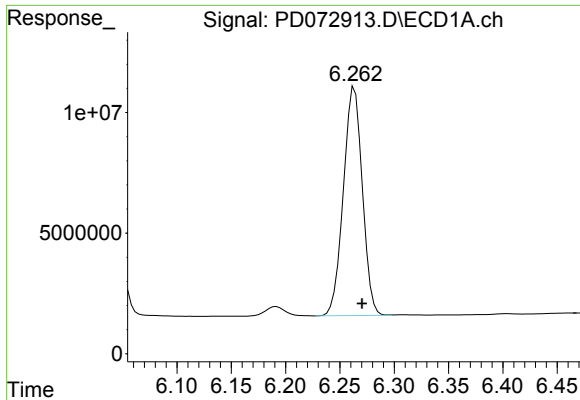
#18 Endrin aldehyde

R.T.: 6.040 min  
 Delta R.T.: -0.007 min  
 Response: 90292046  
 Conc: 54.26 ng/ml



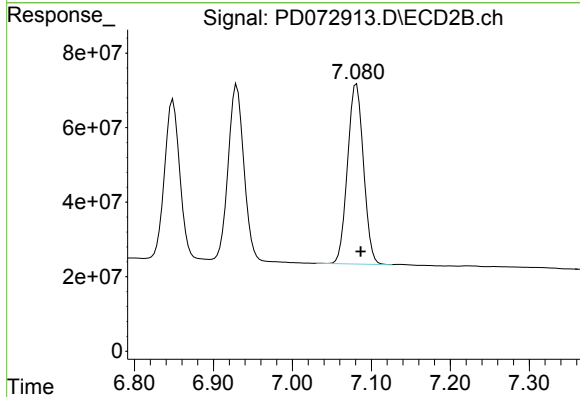
#18 Endrin aldehyde

R.T.: 6.849 min  
 Delta R.T.: -0.005 min  
 Response: 575763078  
 Conc: 53.47 ng/ml

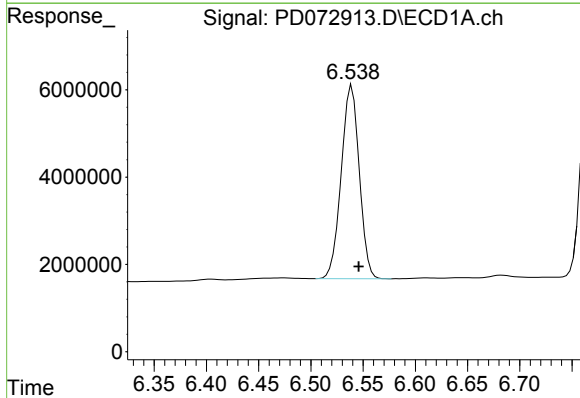


#19 Endosulfan Sulfate  
 R.T.: 6.263 min  
 Delta R.T.: -0.007 min  
 Response: 115236836  
 Conc: 55.27 ng/ml

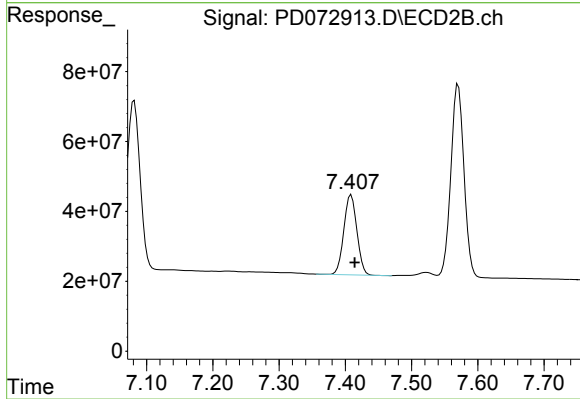
Instrument :  
 ECD\_D  
 ClientSampleId :  
 PSTDCCC050



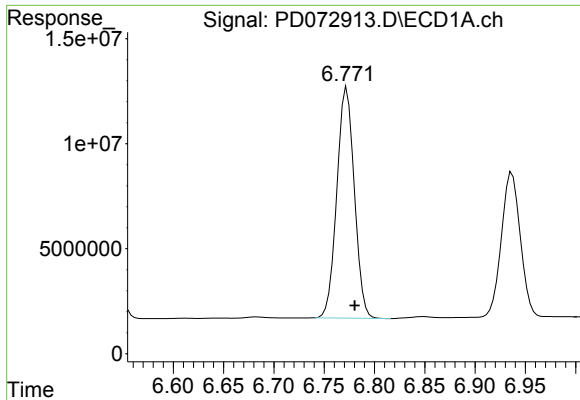
#19 Endosulfan Sulfate  
 R.T.: 7.081 min  
 Delta R.T.: -0.005 min  
 Response: 680053930  
 Conc: 54.30 ng/ml



#20 Methoxychlor  
 R.T.: 6.539 min  
 Delta R.T.: -0.006 min  
 Response: 53198083  
 Conc: 47.12 ng/ml



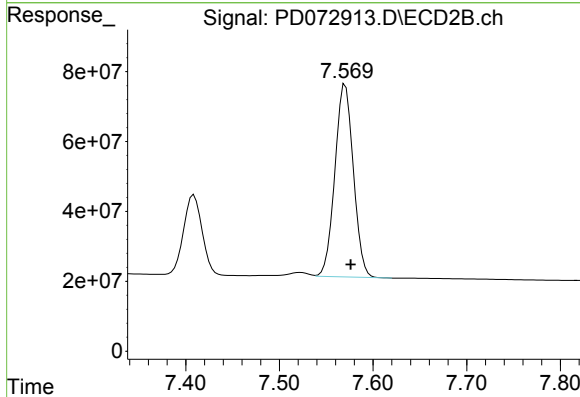
#20 Methoxychlor  
 R.T.: 7.409 min  
 Delta R.T.: -0.005 min  
 Response: 313207939  
 Conc: 48.38 ng/ml



#21 Endrin ketone

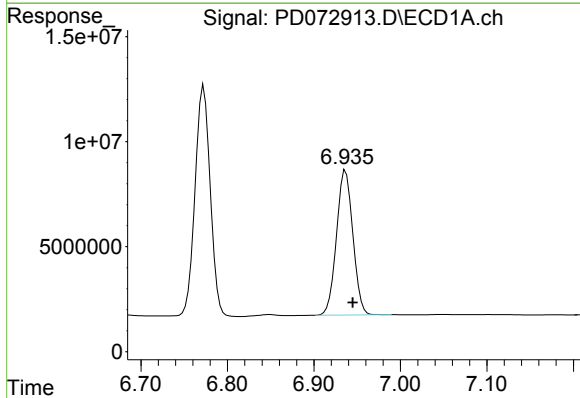
R.T.: 6.773 min  
 Delta R.T.: -0.008 min  
 Response: 132775495  
 Conc: 53.16 ng/ml

Instrument :  
 ECD\_D  
 ClientSampleId :  
 PSTDCCC050



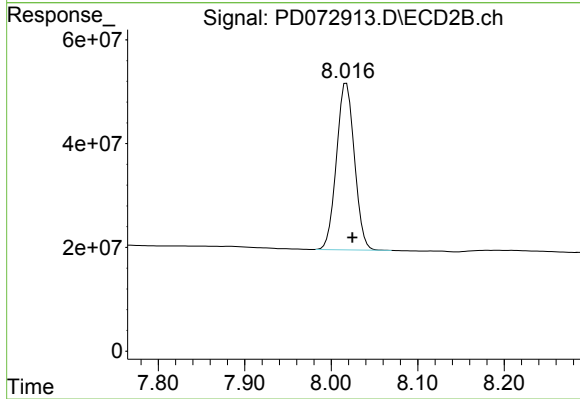
#21 Endrin ketone

R.T.: 7.570 min  
 Delta R.T.: -0.006 min  
 Response: 756259573  
 Conc: 53.45 ng/ml



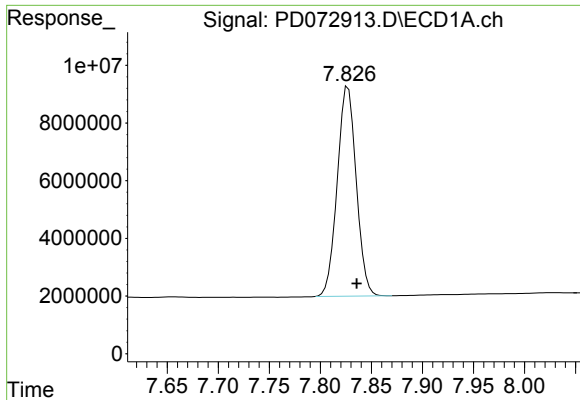
#22 Mirex

R.T.: 6.937 min  
 Delta R.T.: -0.008 min  
 Response: 90071651  
 Conc: 50.70 ng/ml



#22 Mirex

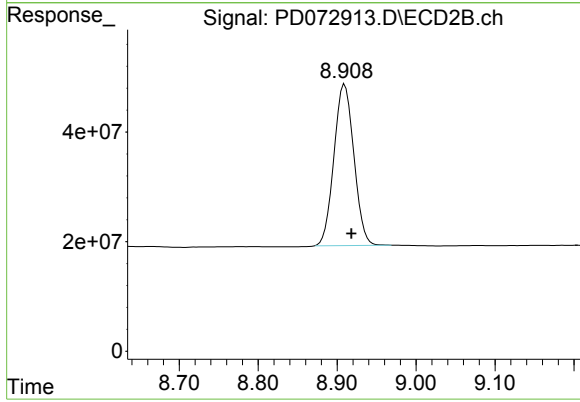
R.T.: 8.018 min  
 Delta R.T.: -0.007 min  
 Response: 460228087  
 Conc: 50.68 ng/ml



#28 Decachlorobiphenyl

R.T.: 7.827 min  
Delta R.T.: -0.009 min  
Response: 94235299  
Conc: 49.01 ng/ml

Instrument :  
ECD\_D  
ClientSampleId :  
PSTDCCC050



#28 Decachlorobiphenyl

R.T.: 8.910 min  
Delta R.T.: -0.009 min  
Response: 516390789  
Conc: 53.89 ng/ml