

Data Path : Z:\pestpcbsrv\HPCHEM1\ECD_D\Data\PD111119\
 Data File : PD055889.D
 Signal(s) : Signal #1: ECD1A.ch Signal #2: ECD2B.ch
 Acq On : 11 Nov 2019 16:35
 Operator : SG\AJ
 Sample : K5719-15
 Misc :
 ALS Vial : 29 Sample Multiplier: 1

Instrument :
 ECD_D
 ClientSampleId :
 F2J09

Integration File signal 1: autoint1.e
 Integration File signal 2: autoint2.e
 Quant Time: Nov 12 00:39:27 2019
 Quant Method : Z:\pestpcbsrv\HPCHEM1\ECD_D\Method\PD110319CLP.M
 Quant Title : GC Extractables
 QLast Update : Sat Nov 02 07:20:38 2019
 Response via : Initial Calibration
 Integrator: ChemStation

Volume Inj. : 1 µl
 Signal #1 Phase : ZB-MR2 Signal #2 Phase: ZB-MR1
 Signal #1 Info : 30M x 0.32mm x0.2 Signal #2 Info : 30M x 0.32mm x 0.50µm

Compound	RT#1	RT#2	Resp#1	Resp#2	ng/ml	ng/ml
----------	------	------	--------	--------	-------	-------

 System Monitoring Compounds

1) SA Tetrachlo...	3.289	3.963	12145239	16143226	16.134	15.405
27) SA Decachlor...	7.964	8.998	10082675	12832007	12.370	11.300

Target Compounds

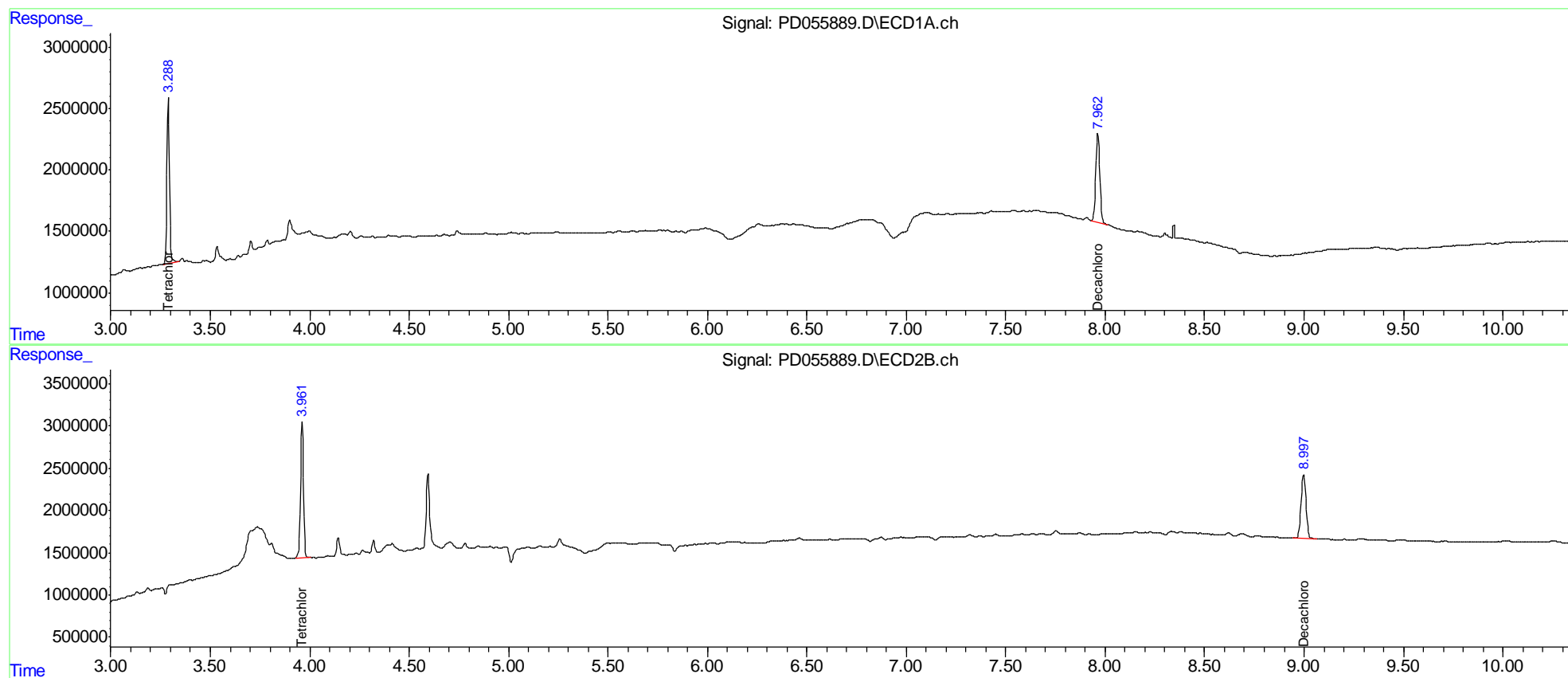
(f)=RT Delta > 1/2 Window (#)=Amounts differ by > 25% (m)=manual int.

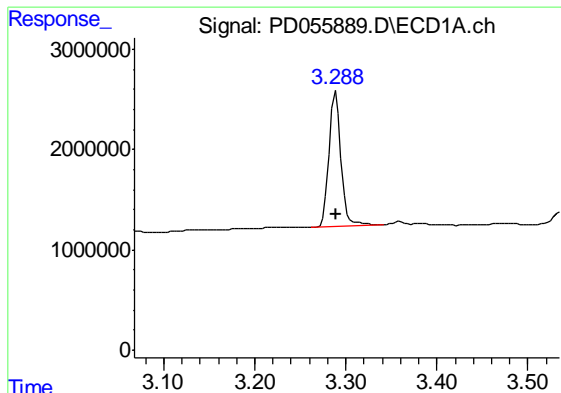
Data Path : Z:\pestpcbsrv\HPCHEM1\ECD_D\Data\PD111119\
 Data File : PD055889.D
 Signal(s) : Signal #1: ECD1A.ch Signal #2: ECD2B.ch
 Acq On : 11 Nov 2019 16:35
 Operator : SG\AJ
 Sample : K5719-15
 Misc :
 ALS Vial : 29 Sample Multiplier: 1

Instrument :
 ECD_D
 ClientSampled :
 F2J09

Integration File signal 1: autoint1.e
 Integration File signal 2: autoint2.e
 Quant Time: Nov 12 00:39:27 2019
 Quant Method : Z:\pestpcbsrv\HPCHEM1\ECD_D\Method\PD110319CLP.M
 Quant Title : GC Extractables
 QLast Update : Sat Nov 02 07:20:38 2019
 Response via : Initial Calibration
 Integrator: ChemStation

Volume Inj. : 1 µl
 Signal #1 Phase : ZB-MR2 Signal #2 Phase: ZB-MR1
 Signal #1 Info : 30M x 0.32mm x0.2 Signal #2 Info : 30M x 0.32mm x 0.50µm

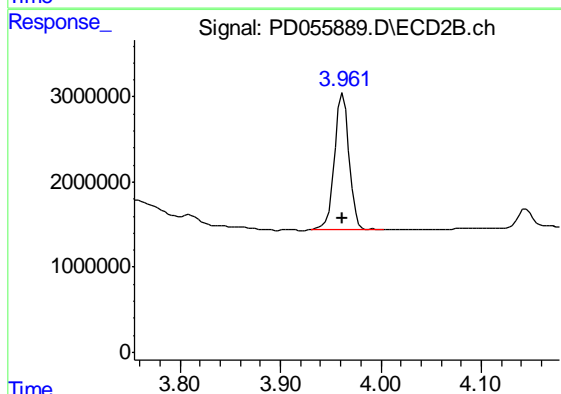




#1 Tetrachloro-m-xylene

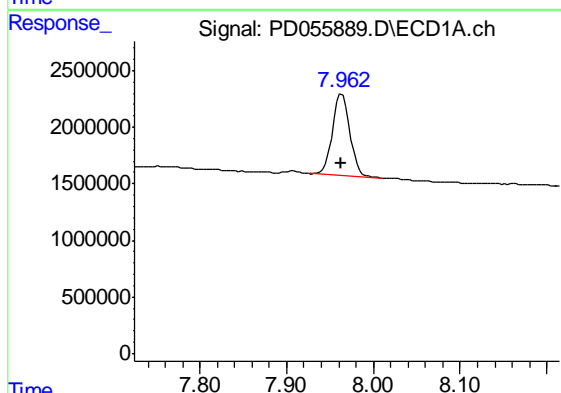
R.T.: 3.289 min
Delta R.T.: 0.000 min
Response: 12145239
Conc: 16.13 ng/ml

Instrument :
ECD_D
ClientSampleId :
F2J09



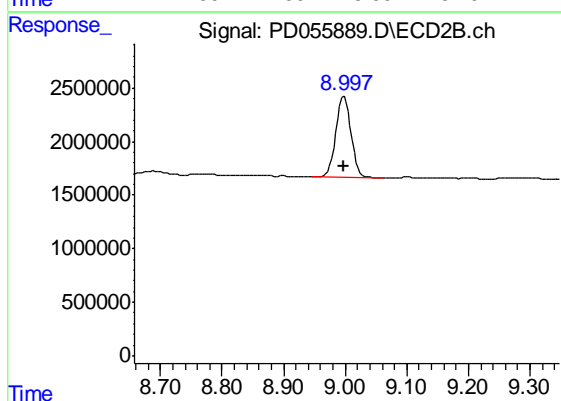
#1 Tetrachloro-m-xylene

R.T.: 3.963 min
Delta R.T.: 0.000 min
Response: 16143226
Conc: 15.40 ng/ml



#27 Decachlorobiphenyl

R.T.: 7.964 min
Delta R.T.: 0.000 min
Response: 10082675
Conc: 12.37 ng/ml



#27 Decachlorobiphenyl

R.T.: 8.998 min
Delta R.T.: 0.002 min
Response: 12832007
Conc: 11.30 ng/ml