

Data Path : Z:\pestpcbsrv\HPCHEM1\ECD\_D\Data\PD111119\  
 Data File : PD055894.D  
 Signal(s) : Signal #1: ECD1A.ch Signal #2: ECD2B.ch  
 Acq On : 11 Nov 2019 17:45  
 Operator : SG\AJ  
 Sample : K5719-20  
 Misc :  
 ALS Vial : 34 Sample Multiplier: 1

Instrument :  
 ECD\_D  
 ClientSampleId :  
 F2J18

Integration File signal 1: autoint1.e  
 Integration File signal 2: autoint2.e  
 Quant Time: Nov 12 00:40:15 2019  
 Quant Method : Z:\pestpcbsrv\HPCHEM1\ECD\_D\Method\PD110319CLP.M  
 Quant Title : GC Extractables  
 QLast Update : Sat Nov 02 07:20:38 2019  
 Response via : Initial Calibration  
 Integrator: ChemStation

Volume Inj. : 1 µl  
 Signal #1 Phase : ZB-MR2 Signal #2 Phase: ZB-MR1  
 Signal #1 Info : 30M x 0.32mm x0.2 Signal #2 Info : 30M x 0.32mm x 0.50µm

Compound	RT#1	RT#2	Resp#1	Resp#2	ng/ml	ng/ml
-----						
System Monitoring Compounds						
1) SA Tetrachlo...	3.289	3.963	16503323	21786376	21.923	20.789
27) SA Decachlor...	7.964	8.999	22639457	29169043	27.775	25.687

Target Compounds

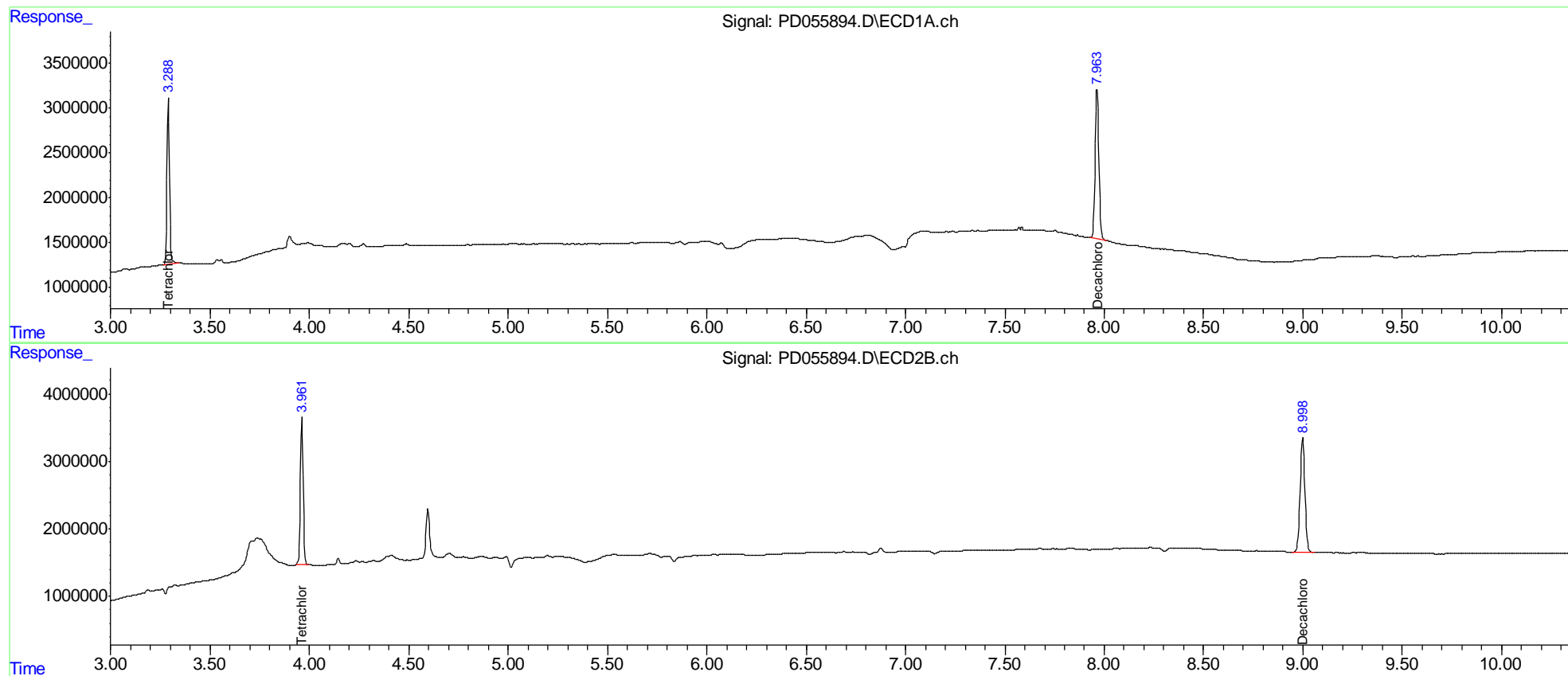
(f)=RT Delta > 1/2 Window (#)=Amounts differ by > 25% (m)=manual int.

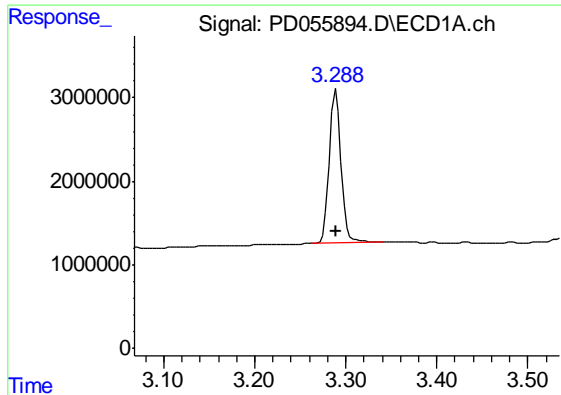
Data Path : Z:\pestpcbsrv\HPCHEM1\ECD\_D\Data\PD111119\  
 Data File : PD055894.D  
 Signal(s) : Signal #1: ECD1A.ch Signal #2: ECD2B.ch  
 Acq On : 11 Nov 2019 17:45  
 Operator : SG\AJ  
 Sample : K5719-20  
 Misc :  
 ALS Vial : 34 Sample Multiplier: 1

Instrument :  
 ECD\_D  
 ClientSampled :  
 F2J18

Integration File signal 1: autoint1.e  
 Integration File signal 2: autoint2.e  
 Quant Time: Nov 12 00:40:15 2019  
 Quant Method : Z:\pestpcbsrv\HPCHEM1\ECD\_D\Method\PD110319CLP.M  
 Quant Title : GC Extractables  
 QLast Update : Sat Nov 02 07:20:38 2019  
 Response via : Initial Calibration  
 Integrator: ChemStation

Volume Inj. : 1 µl  
 Signal #1 Phase : ZB-MR2 Signal #2 Phase: ZB-MR1  
 Signal #1 Info : 30M x 0.32mm x0.2 Signal #2 Info : 30M x 0.32mm x 0.50µm

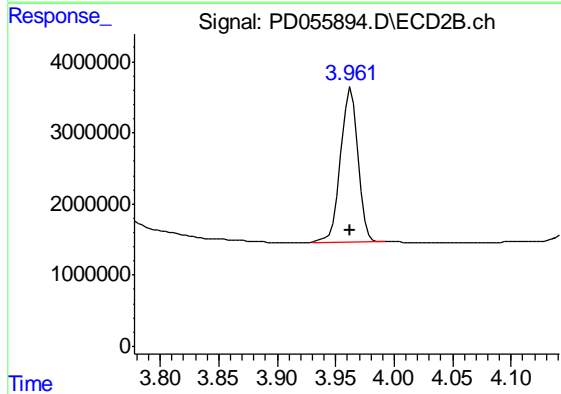




#1 Tetrachloro-m-xylene

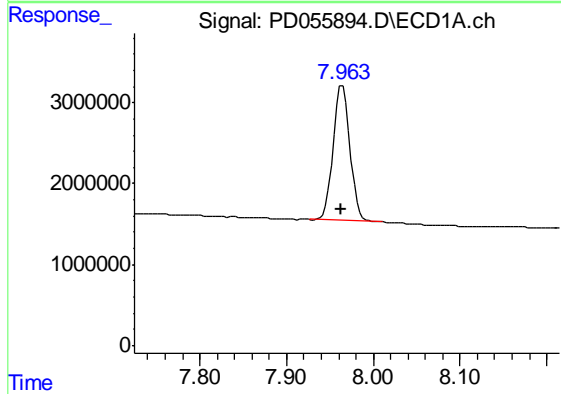
R.T.: 3.289 min  
 Delta R.T.: 0.000 min  
 Response: 16503323  
 Conc: 21.92 ng/ml

Instrument :  
 ECD\_D  
 ClientSampleId :  
 F2J18



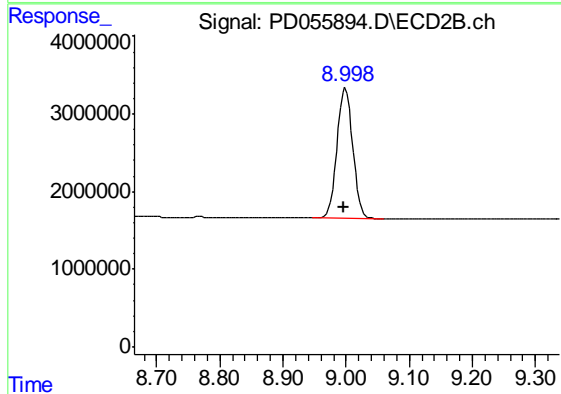
#1 Tetrachloro-m-xylene

R.T.: 3.963 min  
 Delta R.T.: 0.001 min  
 Response: 21786376  
 Conc: 20.79 ng/ml



#27 Decachlorobiphenyl

R.T.: 7.964 min  
 Delta R.T.: 0.001 min  
 Response: 22639457  
 Conc: 27.77 ng/ml



#27 Decachlorobiphenyl

R.T.: 8.999 min  
 Delta R.T.: 0.002 min  
 Response: 29169043  
 Conc: 25.69 ng/ml