

Data Path : Z:\pestpcbsrv\HPCHEM1\ECD_D\Data\PD111223\
 Data File : PD079545.D
 Signal(s) : Signal #1: ECD1A.ch Signal #2: ECD2B.ch
 Acq On : 08 Nov 2023 12:28
 Operator : AR\AJ
 Sample : HEXANE
 Misc :
 ALS Vial : 1 Sample Multiplier: 1

Instrument :
 ECD_D
 ClientSampleId :

Integration File signal 1: autoint1.e
 Integration File signal 2: autoint2.e
 Quant Time: Nov 08 20:16:58 2023
 Quant Method : Z:\pestpcbsrv\HPCHEM1\ECD_D\Method\PD102023.M
 Quant Title : GC Extractables
 QLast Update : Fri Oct 20 04:44:01 2023
 Response via : Initial Calibration
 Integrator: ChemStation

Volume Inj. : 1 µl
 Signal #1 Phase : ZB-MR2 Signal #2 Phase: ZB-MR2
 Signal #1 Info : 30M x 0.32mm x0.5 Signal #2 Info : 30M x 0.32mm x 0.25µm

Compound	RT#1	RT#2	Resp#1	Resp#2	ng/ml	ng/ml

System Monitoring Compounds						
28) SA Decachlor...	9.108	0.000	317776	0	0.158	N.D. #
Target Compounds						
2) A alpha-BHC	4.052f	3.323	103752	330492	0.039	0.095 #
4) MA Heptachlor	0.000	3.966f	0	125317	N.D.	0.041 #
5) MB Aldrin	5.292	4.234f	316316	17395828	0.123	5.318 #
7) B delta-BHC	4.803	4.181f	353401	5594880	0.132	1.671 #
8) B Heptachlo...	5.722	4.791f	35092780	741534	14.973	0.250 #
10) B gamma-Chl...	5.944f	0.000	16648634	0	7.262	N.D. #
11) B alpha-Chl...	6.031f	5.075	5706346	1955817	2.503	0.682 #
13) MA Dieldrin	6.398	0.000	283218	0	0.122	N.D. #
14) MA Endrin	0.000	5.685	0	4005122	N.D.	1.565 #
15) B Endosulfa...	6.808f	5.953f	2016862	2042470	0.989	0.818
16) A 4,4'-DDD	6.747	0.000	713364	0	0.406	N.D. #
17) MA 4,4'-DDT	7.090f	0.000	721576	0	0.381	N.D. #
19) B Endosulfa...	0.000	6.363	0	912885	N.D.	0.391 #
21) B Endrin ke...	7.704f	0.000	995173	0	0.456	N.D. #
22) Mirex	8.174f	7.082f	855113	1439661	0.505	0.674 #
23) Chlordane-1	4.761f	3.802	105349	1181473	1.355	13.603 #
24) Chlordane-2	5.292f	4.403f	316316	3866326	3.962	42.553 #
26) Chlordane-4	0.000	5.075	0	1955817	N.D.	7.971 #
27) Chlordane-5	0.000	5.953f	0	2042470	N.D.	20.494 #

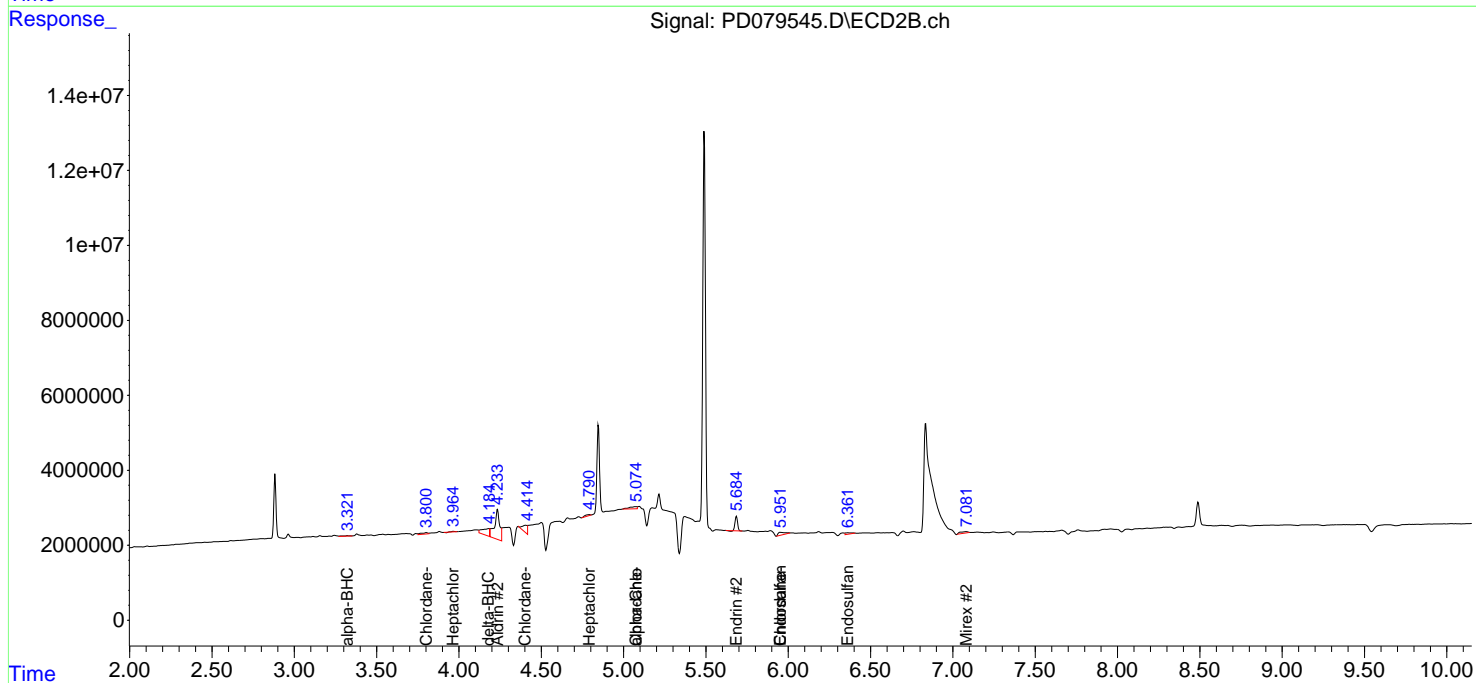
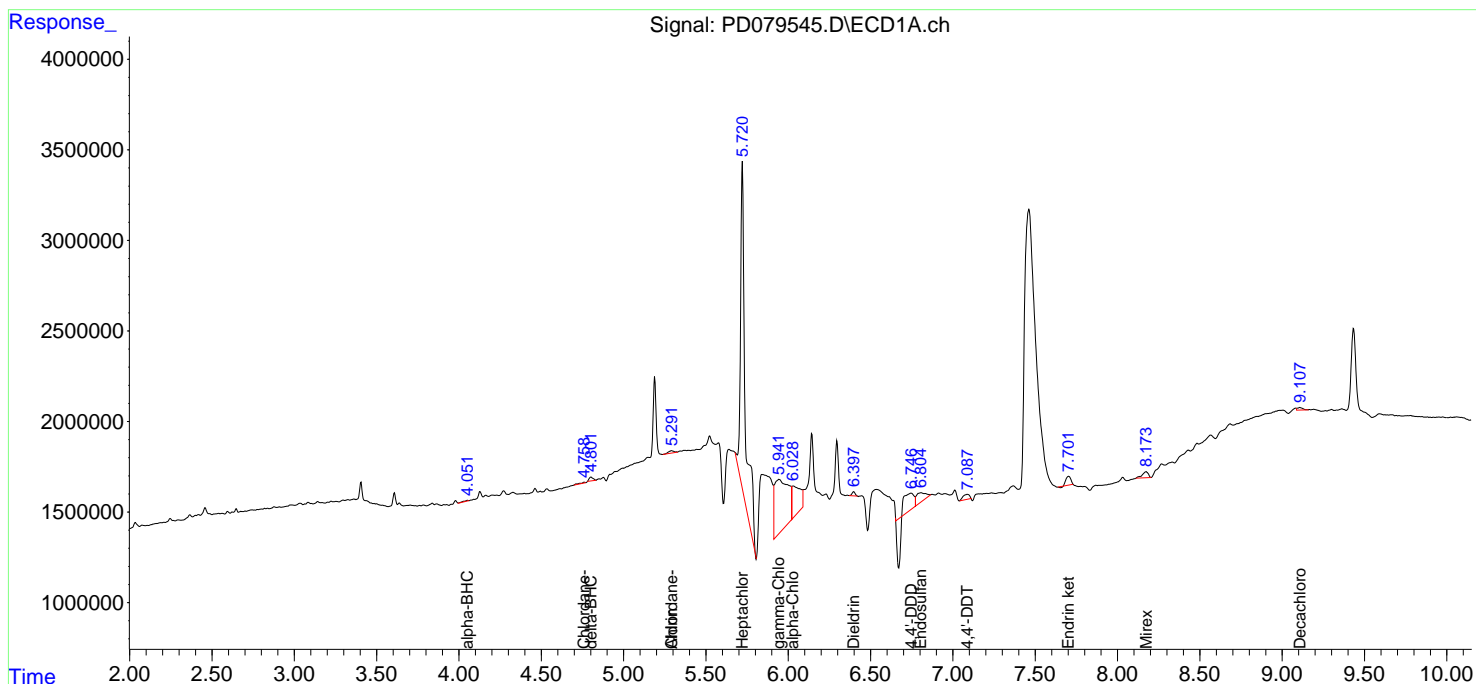
(f)=RT Delta > 1/2 Window (#)=Amounts differ by > 25% (m)=manual int.

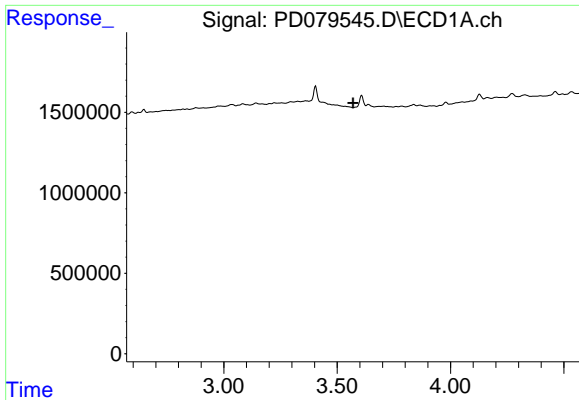
Data Path : Z:\pestpcbsrv\HPCHEM1\ECD_D\Data\PD111223\
 Data File : PD079545.D
 Signal(s) : Signal #1: ECD1A.ch Signal #2: ECD2B.ch
 Acq On : 08 Nov 2023 12:28
 Operator : AR\AJ
 Sample : HEXANE
 Misc :
 ALS Vial : 1 Sample Multiplier: 1

Instrument :
 ECD_D
 ClientSampleId :

Integration File signal 1: autoint1.e
 Integration File signal 2: autoint2.e
 Quant Time: Nov 08 20:16:58 2023
 Quant Method : Z:\pestpcbsrv\HPCHEM1\ECD_D\Method\PD102023.M
 Quant Title : GC Extractables
 QLast Update : Fri Oct 20 04:44:01 2023
 Response via : Initial Calibration
 Integrator: ChemStation

Volume Inj. : 1 µl
 Signal #1 Phase : ZB-MR1 Signal #2 Phase: ZB-MR2
 Signal #1 Info : 30M x 0.32mm x 0.5 Signal #2 Info : 30M x 0.32mm x 0.25µm

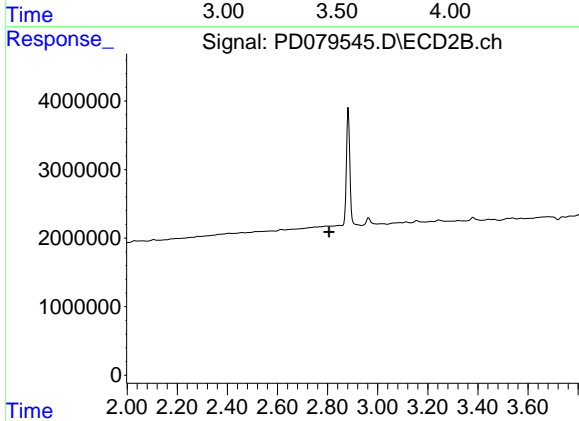




#1 Tetrachloro-m-xylene

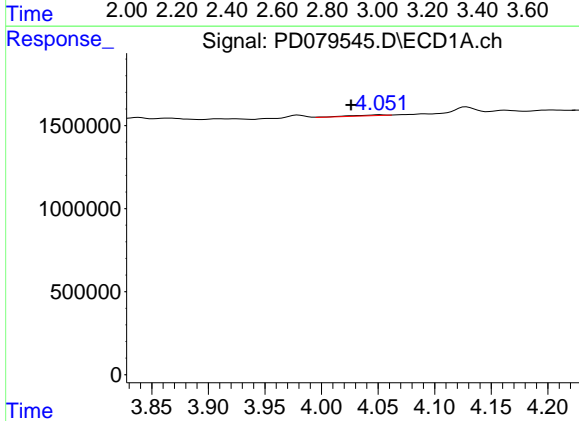
R.T.: 0.000 min
 Exp R.T. : 3.570 min
 Response: 0
 Conc: N.D.

Instrument :
 ECD_D
 ClientSampleId :



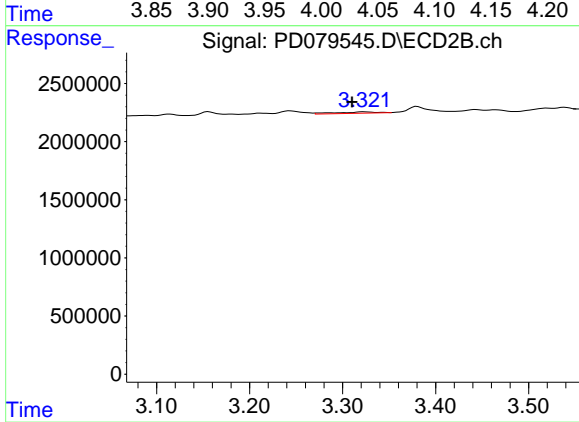
#1 Tetrachloro-m-xylene

R.T.: 0.000 min
 Exp R.T. : 2.806 min
 Response: 0
 Conc: N.D.



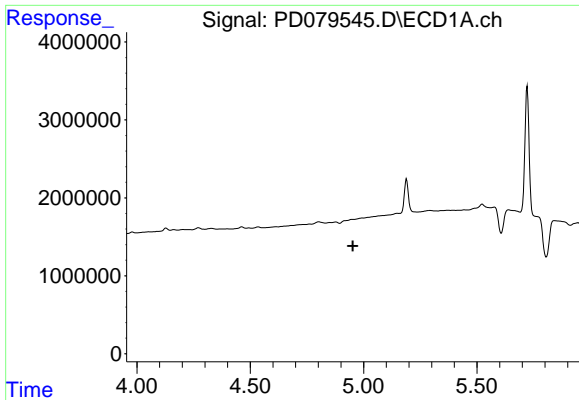
#2 alpha-BHC

R.T.: 4.052 min
 Delta R.T.: 0.026 min
 Response: 103752
 Conc: 0.04 ng/ml



#2 alpha-BHC

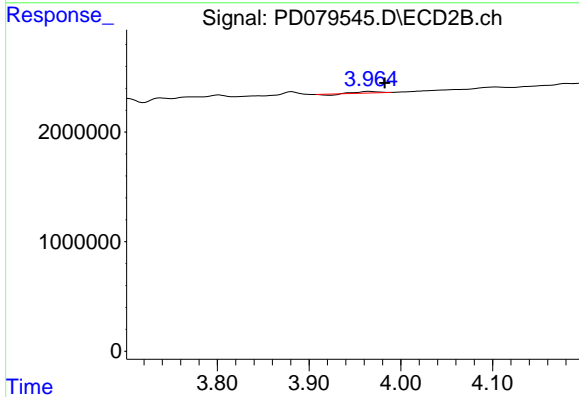
R.T.: 3.323 min
 Delta R.T.: 0.013 min
 Response: 330492
 Conc: 0.10 ng/ml



#4 Heptachlor

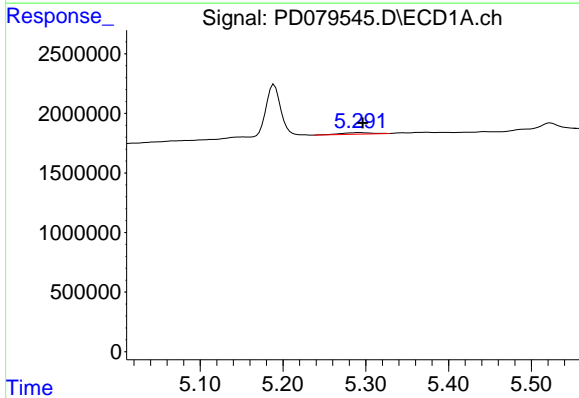
R.T.: 0.000 min
 Exp R.T.: 4.952 min
 Response: 0
 Conc: N.D.

Instrument :
 ECD_D
 ClientSampleId :



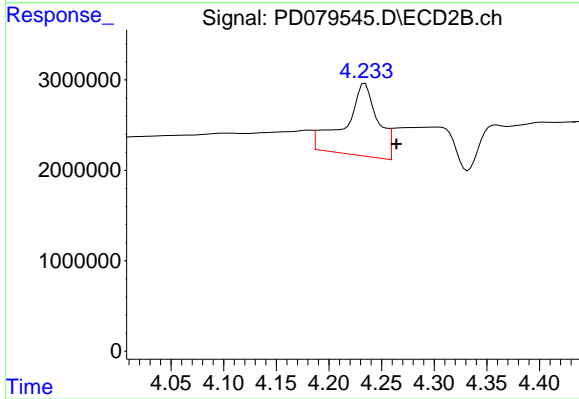
#4 Heptachlor

R.T.: 3.966 min
 Delta R.T.: -0.017 min
 Response: 125317
 Conc: 0.04 ng/ml



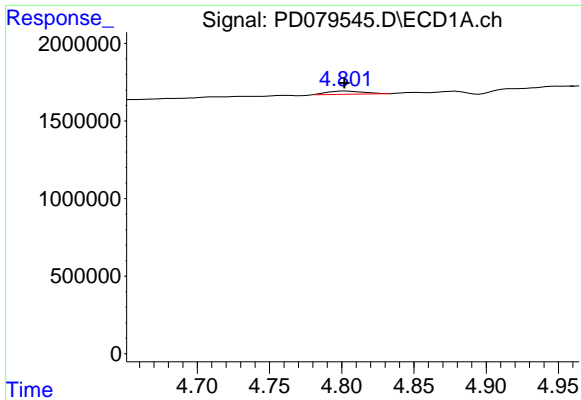
#5 Aldrin

R.T.: 5.292 min
 Delta R.T.: -0.004 min
 Response: 316316
 Conc: 0.12 ng/ml



#5 Aldrin

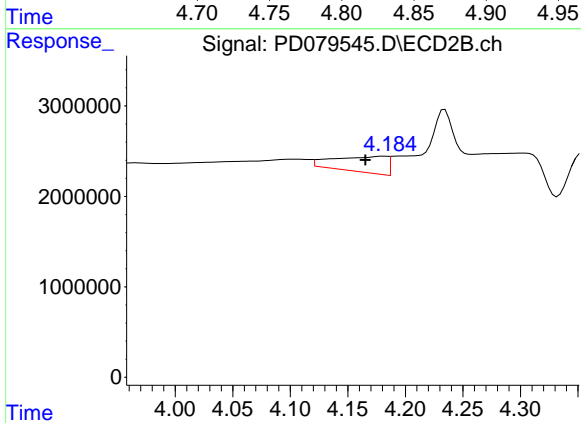
R.T.: 4.234 min
 Delta R.T.: -0.030 min
 Response: 17395828
 Conc: 5.32 ng/ml



#7 delta-BHC

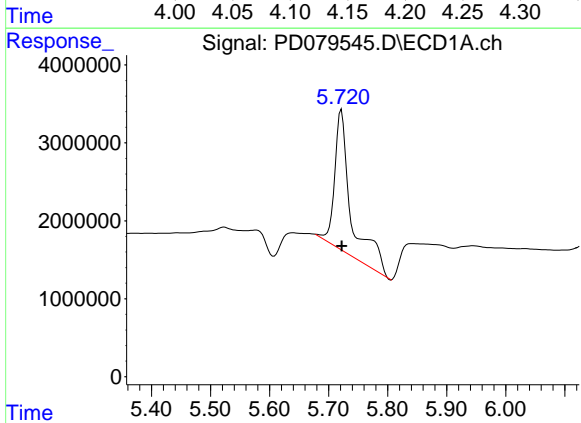
R.T.: 4.803 min
 Delta R.T.: 0.000 min
 Response: 353401
 Conc: 0.13 ng/ml

Instrument :
 ECD_D
 ClientSampleId :



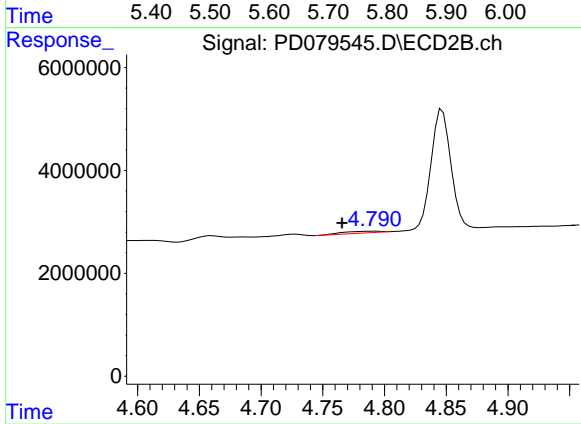
#7 delta-BHC

R.T.: 4.181 min
 Delta R.T.: 0.015 min
 Response: 5594880
 Conc: 1.67 ng/ml



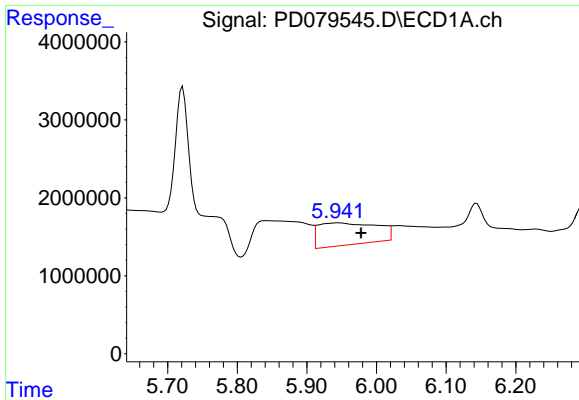
#8 Heptachlor epoxide

R.T.: 5.722 min
 Delta R.T.: 0.000 min
 Response: 35092780
 Conc: 14.97 ng/ml



#8 Heptachlor epoxide

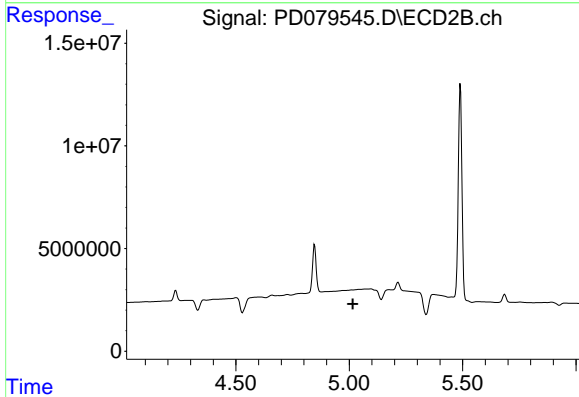
R.T.: 4.791 min
 Delta R.T.: 0.026 min
 Response: 741534
 Conc: 0.25 ng/ml



#10 gamma-Chlordane

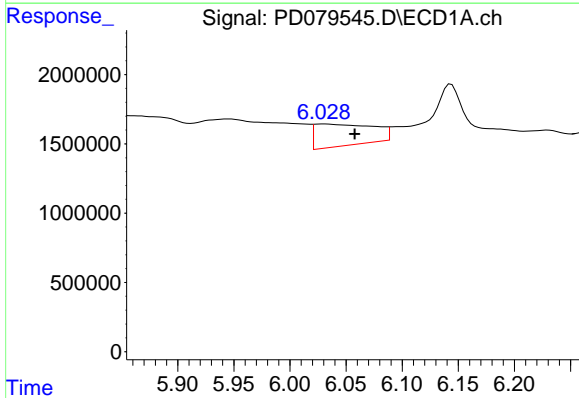
R.T.: 5.944 min
 Delta R.T.: -0.033 min
 Response: 16648634
 Conc: 7.26 ng/ml

Instrument :
 ECD_D
 ClientSampleId :



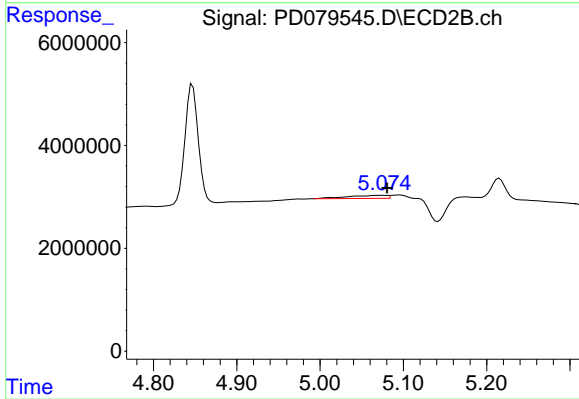
#10 gamma-Chlordane

R.T.: 0.000 min
 Exp R.T. : 5.016 min
 Response: 0
 Conc: N.D.



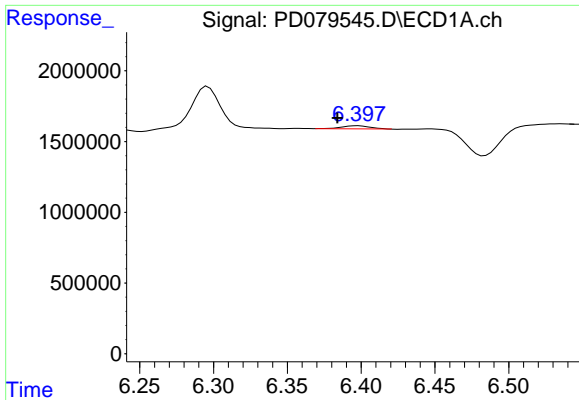
#11 alpha-Chlordane

R.T.: 6.031 min
 Delta R.T.: -0.027 min
 Response: 5706346
 Conc: 2.50 ng/ml



#11 alpha-Chlordane

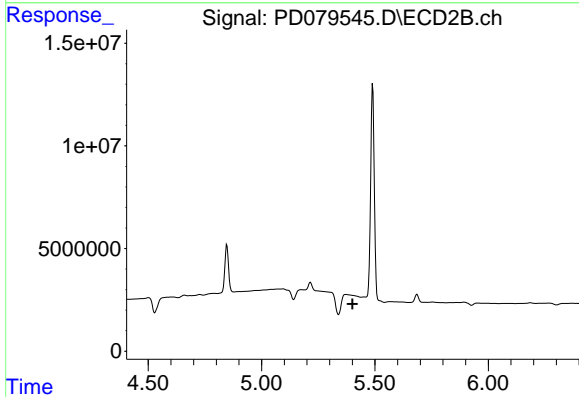
R.T.: 5.075 min
 Delta R.T.: -0.005 min
 Response: 1955817
 Conc: 0.68 ng/ml



#13 Dieldrin

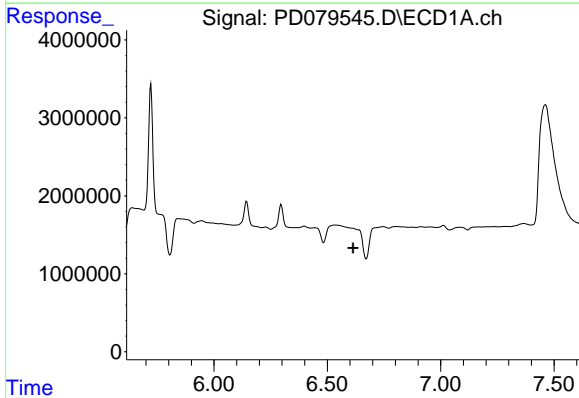
R.T.: 6.398 min
 Delta R.T.: 0.014 min
 Response: 283218
 Conc: 0.12 ng/ml

Instrument :
 ECD_D
 ClientSampleId :



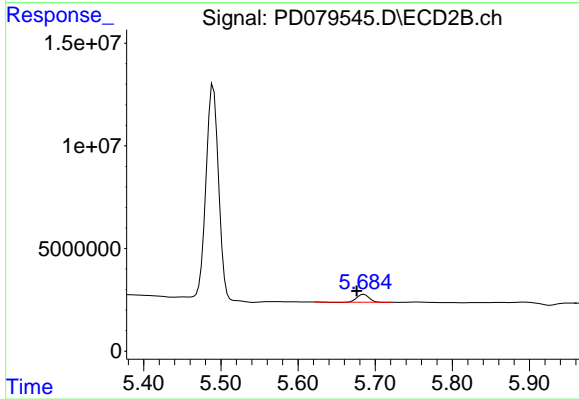
#13 Dieldrin

R.T.: 0.000 min
 Exp R.T. : 5.401 min
 Response: 0
 Conc: N.D.



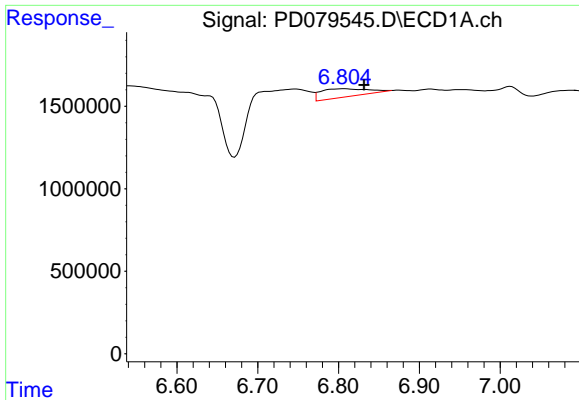
#14 Endrin

R.T.: 0.000 min
 Exp R.T. : 6.614 min
 Response: 0
 Conc: N.D.



#14 Endrin

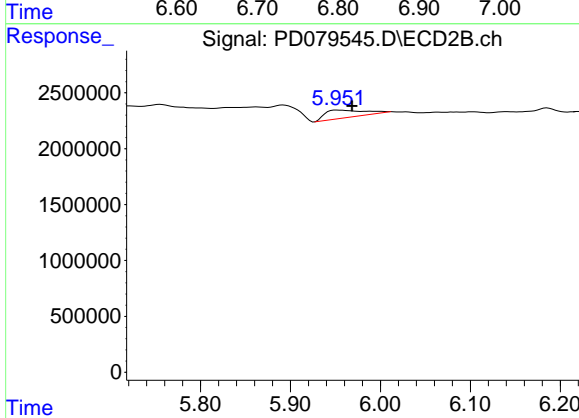
R.T.: 5.685 min
 Delta R.T.: 0.009 min
 Response: 4005122
 Conc: 1.57 ng/ml



#15 Endosulfan II

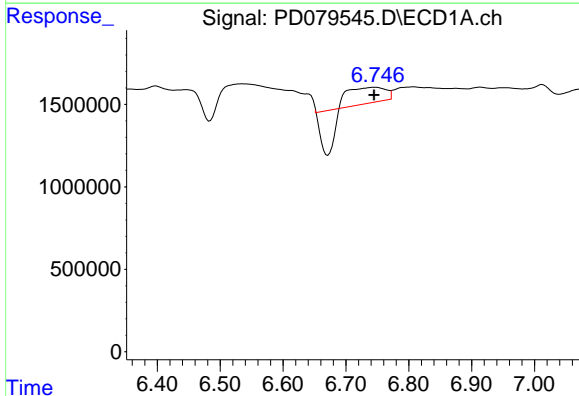
R.T.: 6.808 min
 Delta R.T.: -0.024 min
 Response: 2016862
 Conc: 0.99 ng/ml

Instrument :
 ECD_D
 ClientSampleId :



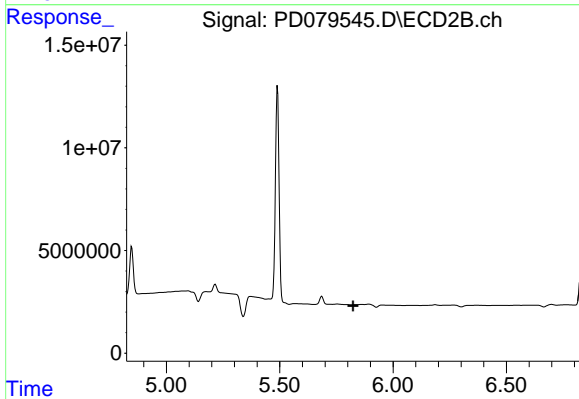
#15 Endosulfan II

R.T.: 5.953 min
 Delta R.T.: -0.015 min
 Response: 2042470
 Conc: 0.82 ng/ml



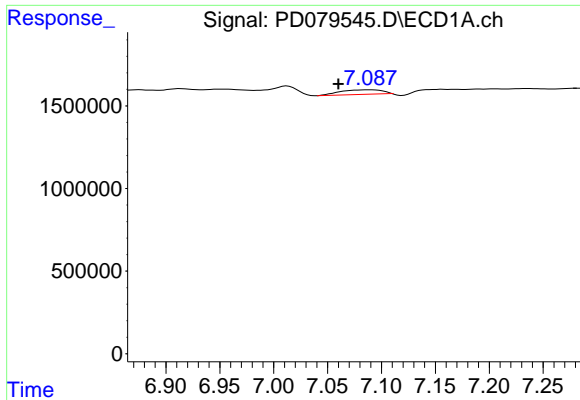
#16 4,4'-DDD

R.T.: 6.747 min
 Delta R.T.: 0.002 min
 Response: 713364
 Conc: 0.41 ng/ml



#16 4,4'-DDD

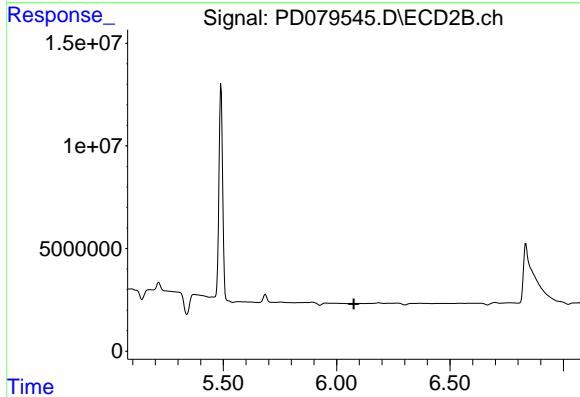
R.T.: 0.000 min
 Exp R.T. : 5.823 min
 Response: 0
 Conc: N.D.



#17 4,4'-DDT

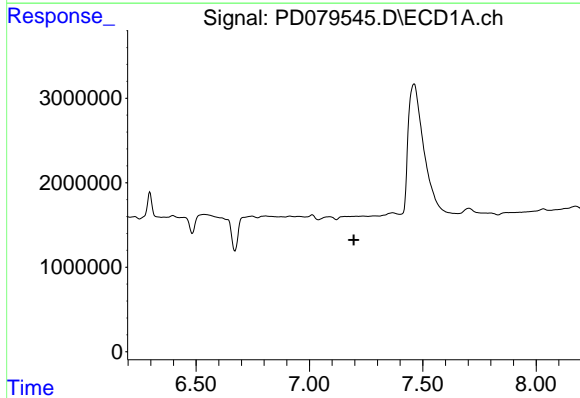
R.T.: 7.090 min
 Delta R.T.: 0.029 min
 Response: 721576
 Conc: 0.38 ng/ml

Instrument :
 ECD_D
 ClientSampleId :



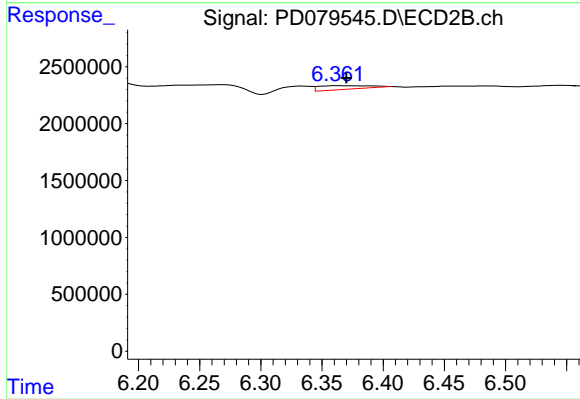
#17 4,4'-DDT

R.T.: 0.000 min
 Exp R.T. : 6.076 min
 Response: 0
 Conc: N.D.



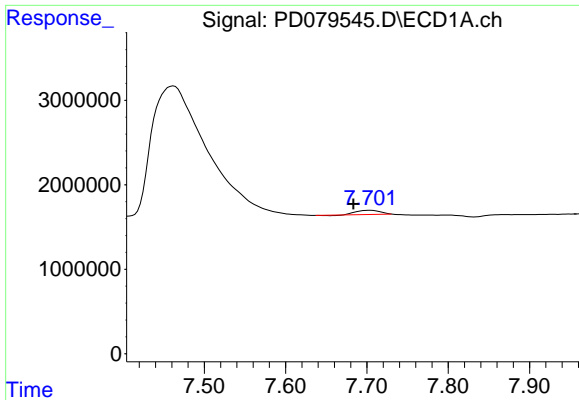
#19 Endosulfan Sulfate

R.T.: 0.000 min
 Exp R.T. : 7.196 min
 Response: 0
 Conc: N.D.



#19 Endosulfan Sulfate

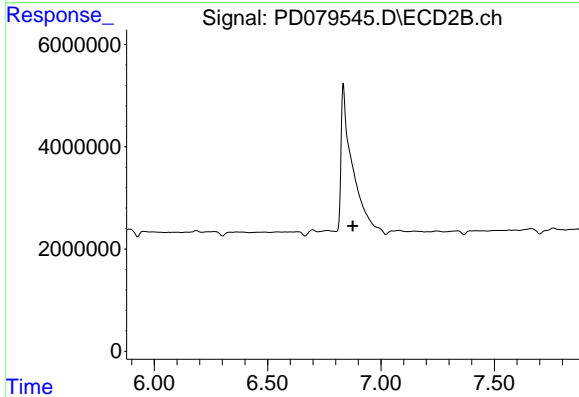
R.T.: 6.363 min
 Delta R.T.: -0.007 min
 Response: 912885
 Conc: 0.39 ng/ml



#21 Endrin ketone

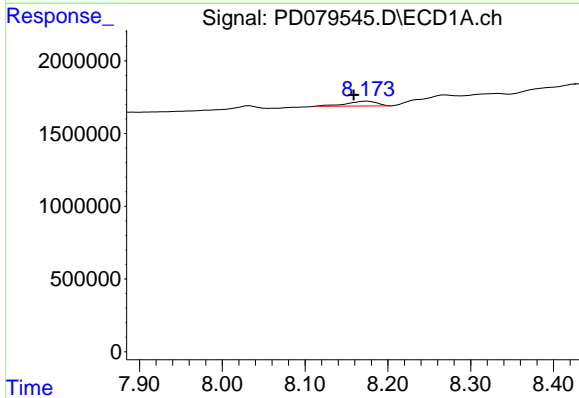
R.T.: 7.704 min
 Delta R.T.: 0.020 min
 Response: 995173
 Conc: 0.46 ng/ml

Instrument :
 ECD_D
 ClientSampleId :



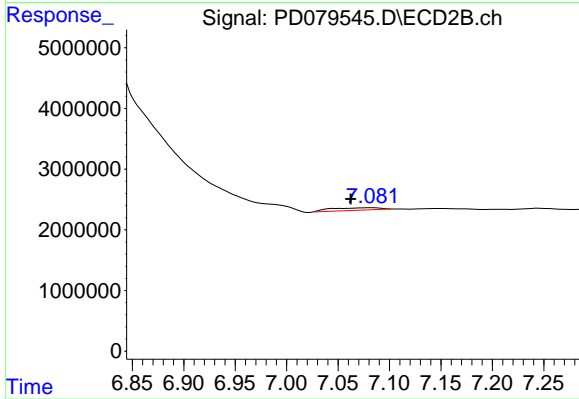
#21 Endrin ketone

R.T.: 0.000 min
 Exp R.T. : 6.876 min
 Response: 0
 Conc: N.D.



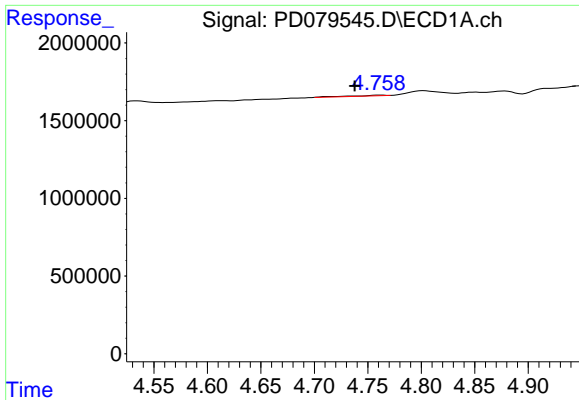
#22 Mirex

R.T.: 8.174 min
 Delta R.T.: 0.015 min
 Response: 855113
 Conc: 0.51 ng/ml



#22 Mirex

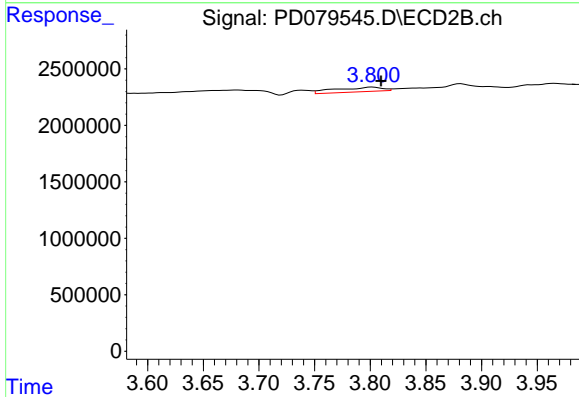
R.T.: 7.082 min
 Delta R.T.: 0.020 min
 Response: 1439661
 Conc: 0.67 ng/ml



#23 Chlordane-1

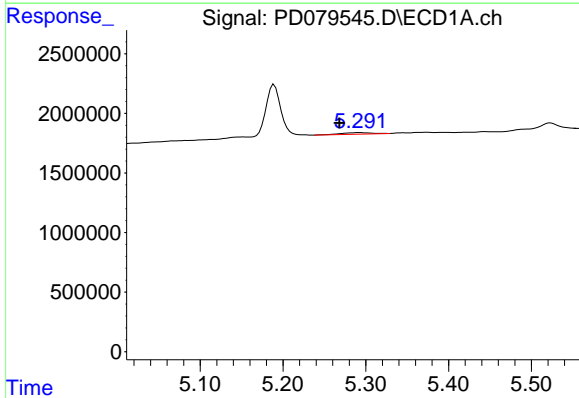
R.T.: 4.761 min
 Delta R.T.: 0.023 min
 Response: 105349
 Conc: 1.35 ng/ml

Instrument :
 ECD_D
 ClientSampleId :



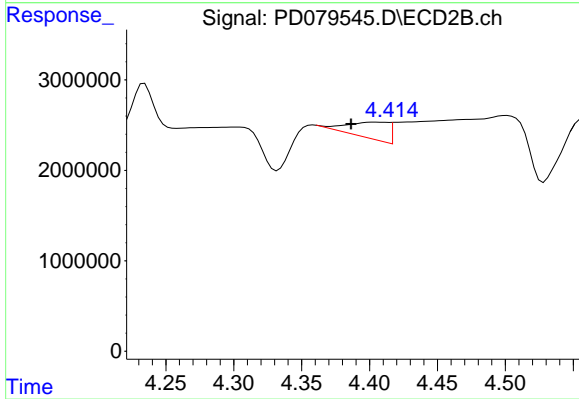
#23 Chlordane-1

R.T.: 3.802 min
 Delta R.T.: -0.008 min
 Response: 1181473
 Conc: 13.60 ng/ml



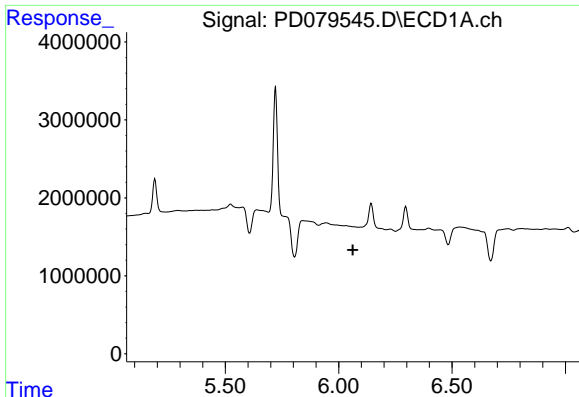
#24 Chlordane-2

R.T.: 5.292 min
 Delta R.T.: 0.024 min
 Response: 316316
 Conc: 3.96 ng/ml



#24 Chlordane-2

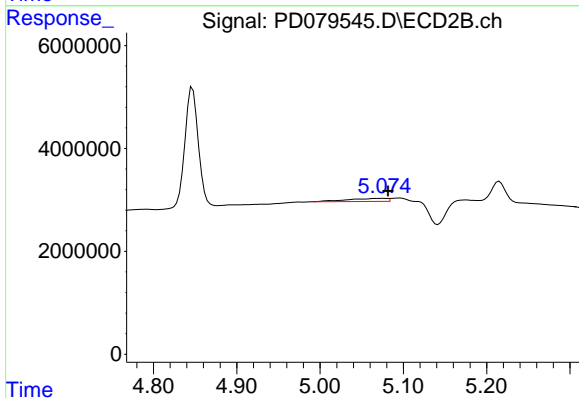
R.T.: 4.403 min
 Delta R.T.: 0.017 min
 Response: 3866326
 Conc: 42.55 ng/ml



#26 Chlordane-4

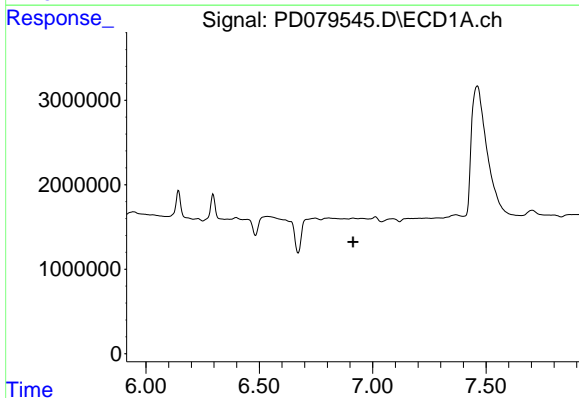
R.T.: 0.000 min
 Exp R.T. : 6.062 min
 Response: 0
 Conc: N.D.

Instrument :
 ECD_D
 ClientSampleId :



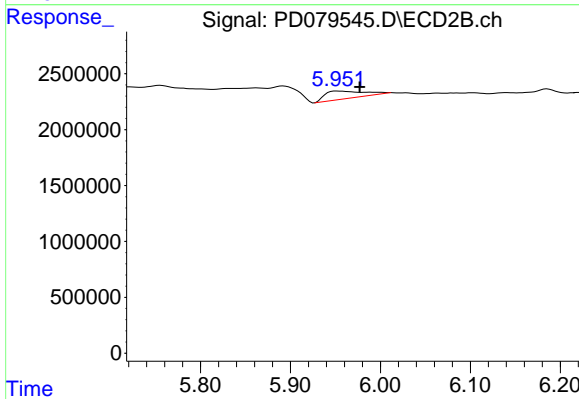
#26 Chlordane-4

R.T.: 5.075 min
 Delta R.T.: -0.006 min
 Response: 1955817
 Conc: 7.97 ng/ml



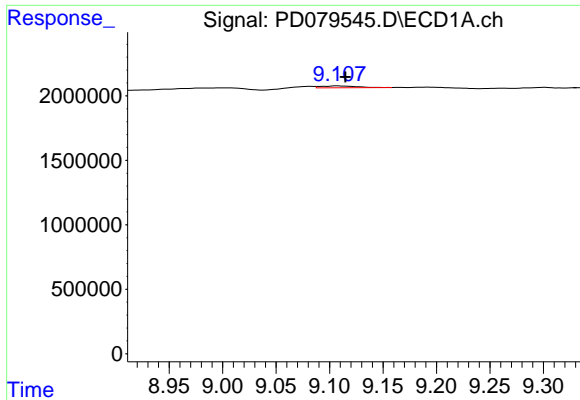
#27 Chlordane-5

R.T.: 0.000 min
 Exp R.T. : 6.914 min
 Response: 0
 Conc: N.D.



#27 Chlordane-5

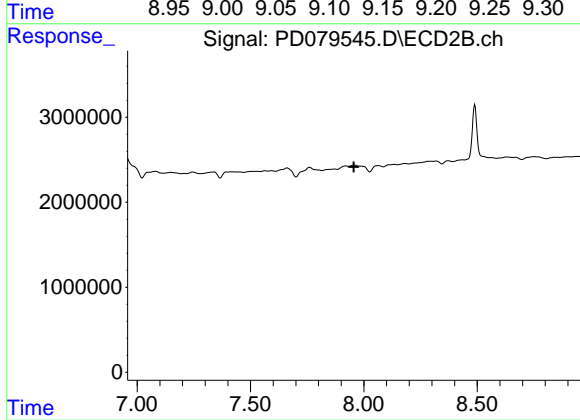
R.T.: 5.953 min
 Delta R.T.: -0.024 min
 Response: 2042470
 Conc: 20.49 ng/ml



#28 Decachlorobiphenyl

R.T.: 9.108 min
 Delta R.T.: -0.007 min
 Response: 317776
 Conc: 0.16 ng/ml

Instrument :
 ECD_D
 ClientSampleId :



#28 Decachlorobiphenyl

R.T.: 0.000 min
 Exp R.T. : 7.955 min
 Response: 0
 Conc: N.D.