

Data Path : Z:\pestpcbsrv\HPCHEM1\ECD\_D\Data\PD111223\  
 Data File : PD079549.D  
 Signal(s) : Signal #1: ECD1A.ch Signal #2: ECD2B.ch  
 Acq On : 08 Nov 2023 13:34  
 Operator : AR\AJ  
 Sample : PCHLORCCC500  
 Misc :  
 ALS Vial : 5 Sample Multiplier: 1

Instrument :  
 ECD\_D  
 ClientSampleId :

Integration File signal 1: autoint1.e  
 Integration File signal 2: autoint2.e  
 Quant Time: Nov 08 20:18:11 2023  
 Quant Method : Z:\pestpcbsrv\HPCHEM1\ECD\_D\Method\PD102023.M  
 Quant Title : GC Extractables  
 QLast Update : Fri Oct 20 04:44:01 2023  
 Response via : Initial Calibration  
 Integrator: ChemStation

Volume Inj. : 1 µl  
 Signal #1 Phase : ZB-MR1 Signal #2 Phase: ZB-MR2  
 Signal #1 Info : 30M x 0.32mm x0.5 Signal #2 Info : 30M x 0.32mm x 0.25µm

	Compound	RT#1	RT#2	Resp#1	Resp#2	ng/ml	ng/ml
-----							
System Monitoring Compounds							
1)	SA Tetrachlo...	3.573	2.802	69106886	133.4E6	42.802	57.610 #
28)	SA Decachlor...	9.119	7.949	90633100	124.3E6	45.180	50.997
Target Compounds							
2)	A alpha-BHC	4.045f	3.293f	2933448	602671	1.102	0.174 #
3)	MA gamma-BHC...	4.388f	0.000	1193642	0	0.459	N.D. #
4)	MA Heptachlor	4.956	3.977	62821933	68014936	23.485	22.270
5)	MB Aldrin	5.270f	4.275	37014091	6367789	14.364	1.947 #
6)	B beta-BHC	0.000	3.939	0	130251	N.D.	0.092 #
7)	B delta-BHC	0.000	4.160	0	7520949	N.D.	2.246 #
8)	B Heptachlo...	5.708	0.000	28705175	0	12.248	N.D. #
10)	B gamma-Chl...	5.982	5.011	148.7E6	134.9E6	64.865	47.000 #
11)	B alpha-Chl...	6.064	5.075	177.1E6	128.4E6	77.683	44.755 #
12)	B 4,4'-DDE	6.221	5.249f	1056930	2499494	0.500	0.939 #
13)	MA Dieldrin	6.390	5.420f	10329486	1147827	4.435	0.386 #
14)	MA Endrin	6.642f	5.675	-1546180	13908844	N.D.	5.435
15)	B Endosulfa...	6.818	5.970	5056157	53308487	2.479	21.353 #
16)	A 4,4'-DDD	6.721f	5.833	26874637	424720	15.288	0.186 #
17)	MA 4,4'-DDT	7.071	6.068	856163	-364055	0.452	N.D. #
18)	B Endrin al...	6.965	6.149	2120448	360527	1.373	0.194 #
19)	B Endosulfa...	7.201	6.370	416977	1879225	0.210	0.805 #
20)	A Methoxychlor	7.531	6.639	451612	343645	0.412	0.253 #
21)	B Endrin ke...	7.712f	0.000	1324956	0	0.608	N.D. #
22)	Mirex	8.173	7.056	-8312	152177	N.D.	0.071
23)	Chlordane-1	4.740	3.803	36908843	46047674	474.722	530.167
24)	Chlordane-2	5.270	4.380	37014091	44196965	463.673	486.435
25)	Chlordane-3	5.982	5.011	148.7E6	134.9E6	479.729	505.618
26)	Chlordane-4	6.064	5.075	177.1E6	128.4E6	476.772	523.429
27)	Chlordane-5	6.915	5.970	32991955	53308487	469.534	534.881
-----							

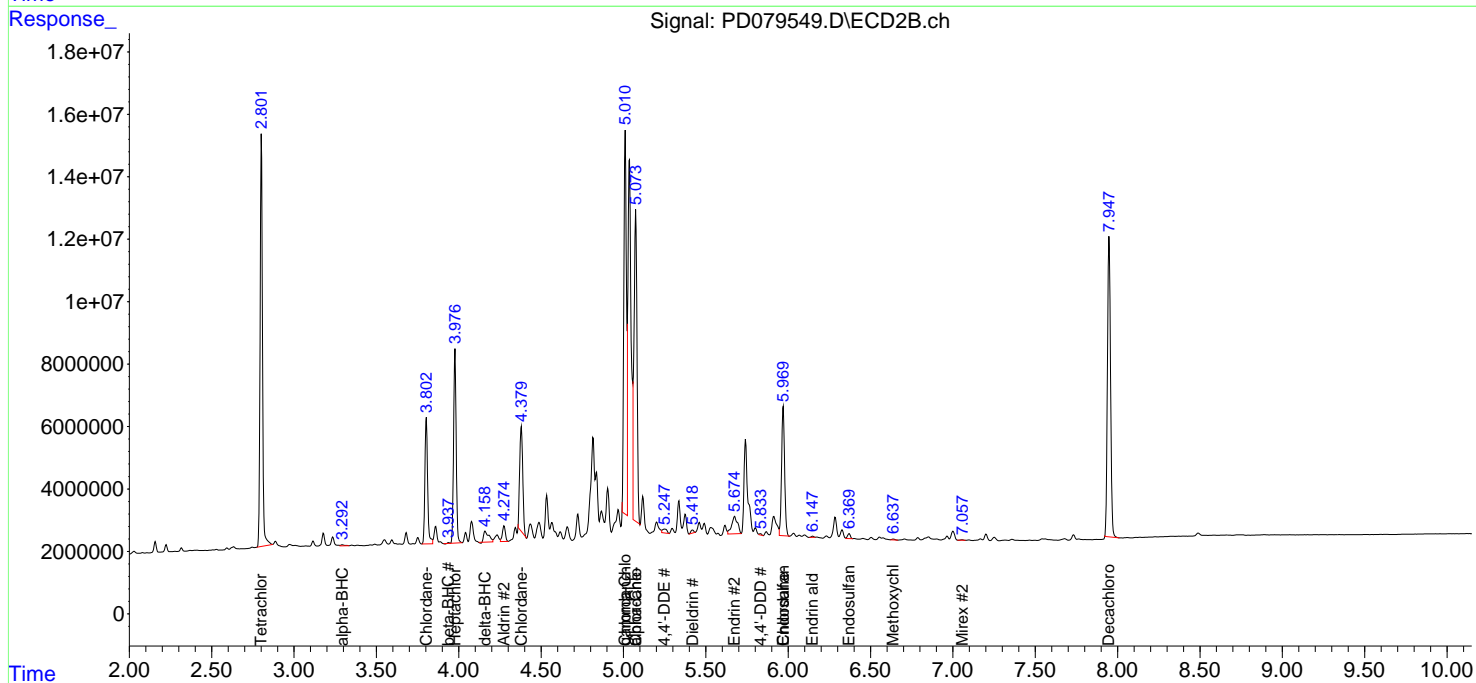
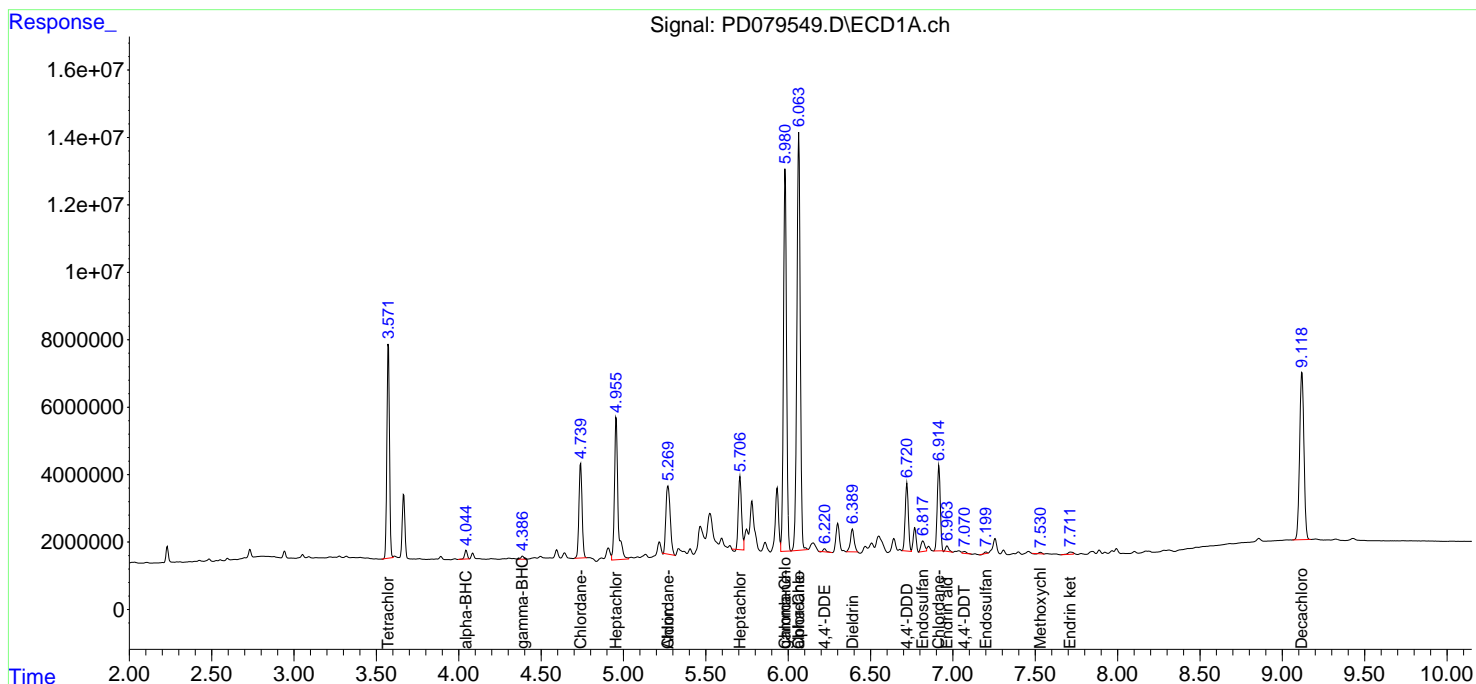
(f)=RT Delta > 1/2 Window (#)=Amounts differ by > 25% (m)=manual int.

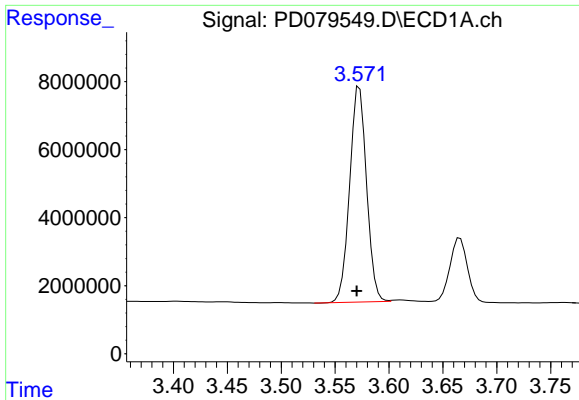
Data Path : Z:\pestpcbsrv\HPCHEM1\ECD\_D\Data\PD111223\  
 Data File : PD079549.D  
 Signal(s) : Signal #1: ECD1A.ch Signal #2: ECD2B.ch  
 Acq On : 08 Nov 2023 13:34  
 Operator : AR\AJ  
 Sample : PCHLORCCC500  
 Misc :  
 ALS Vial : 5 Sample Multiplier: 1

Instrument :  
 ECD\_D  
 ClientSampleId :

Integration File signal 1: autoint1.e  
 Integration File signal 2: autoint2.e  
 Quant Time: Nov 08 20:18:11 2023  
 Quant Method : Z:\pestpcbsrv\HPCHEM1\ECD\_D\Method\PD102023.M  
 Quant Title : GC Extractables  
 QLast Update : Fri Oct 20 04:44:01 2023  
 Response via : Initial Calibration  
 Integrator: ChemStation

Volume Inj. : 1 µl  
 Signal #1 Phase : ZB-MR1 Signal #2 Phase: ZB-MR2  
 Signal #1 Info : 30M x 0.32mm x0.5 Signal #2 Info : 30M x 0.32mm x 0.25µm

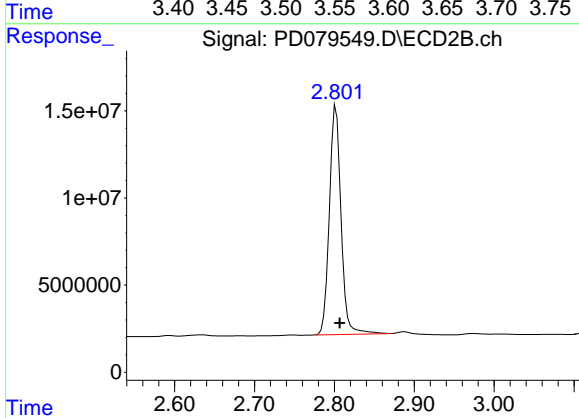




#1 Tetrachloro-m-xylene

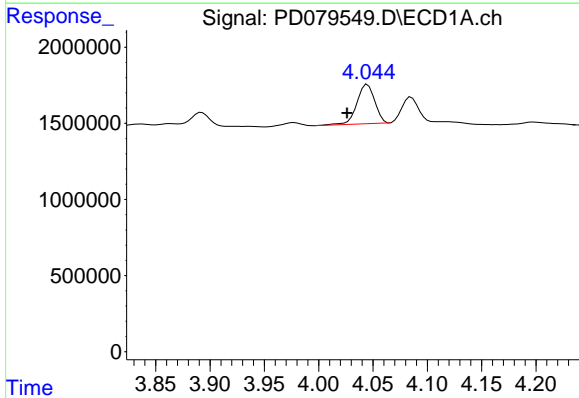
R.T.: 3.573 min  
 Delta R.T.: 0.003 min  
 Response: 69106886  
 Conc: 42.80 ng/ml

Instrument :  
 ECD\_D  
 ClientSampleId :



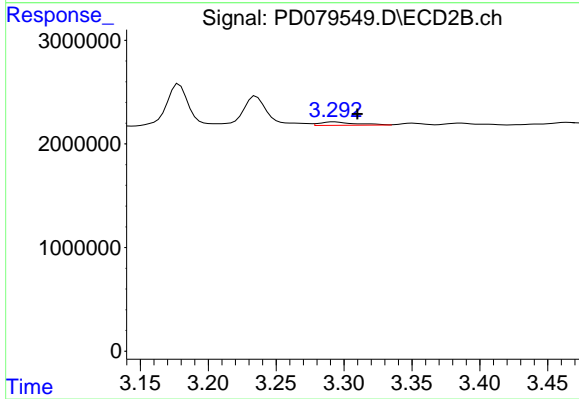
#1 Tetrachloro-m-xylene

R.T.: 2.802 min  
 Delta R.T.: -0.004 min  
 Response: 133383831  
 Conc: 57.61 ng/ml



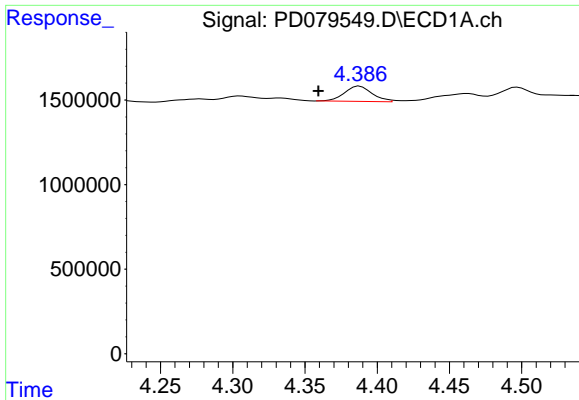
#2 alpha-BHC

R.T.: 4.045 min  
 Delta R.T.: 0.019 min  
 Response: 2933448  
 Conc: 1.10 ng/ml



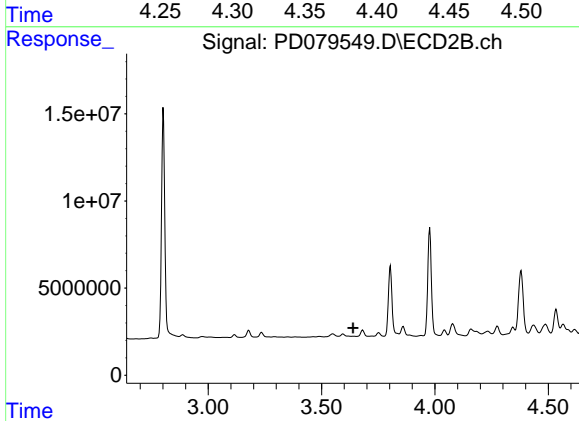
#2 alpha-BHC

R.T.: 3.293 min  
 Delta R.T.: -0.017 min  
 Response: 602671  
 Conc: 0.17 ng/ml

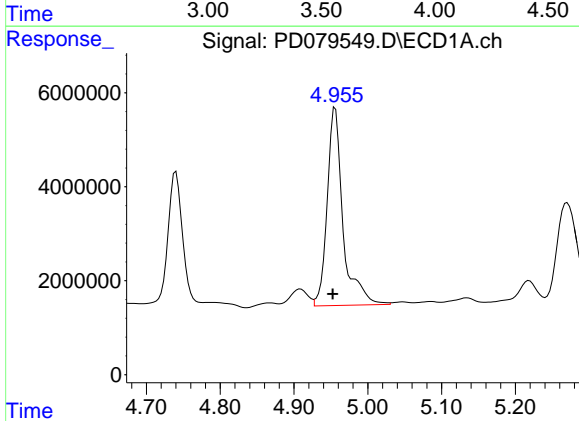


#3 gamma-BHC (Lindane)  
 R.T.: 4.388 min  
 Delta R.T.: 0.028 min  
 Response: 1193642  
 Conc: 0.46 ng/ml

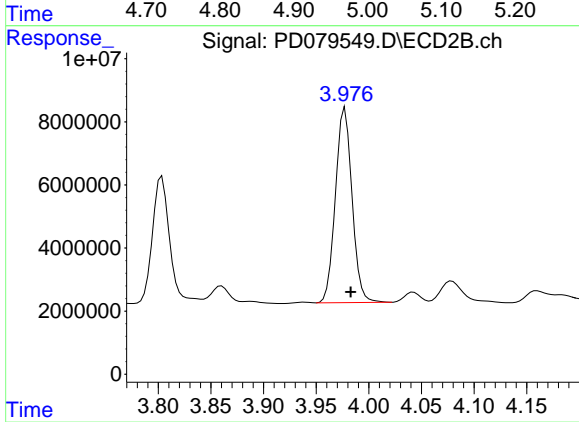
Instrument :  
 ECD\_D  
 ClientSampleId :



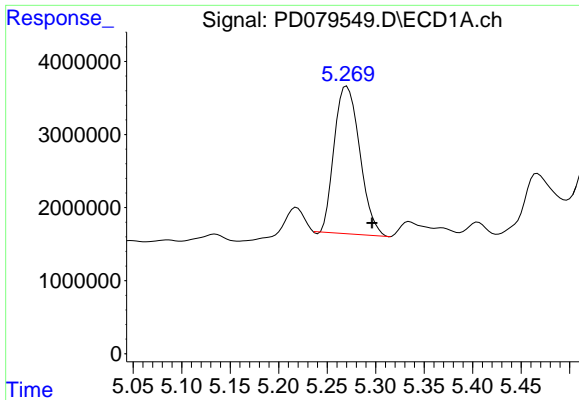
#3 gamma-BHC (Lindane)  
 R.T.: 0.000 min  
 Exp R.T. : 3.640 min  
 Response: 0  
 Conc: N.D.



#4 Heptachlor  
 R.T.: 4.956 min  
 Delta R.T.: 0.004 min  
 Response: 62821933  
 Conc: 23.49 ng/ml

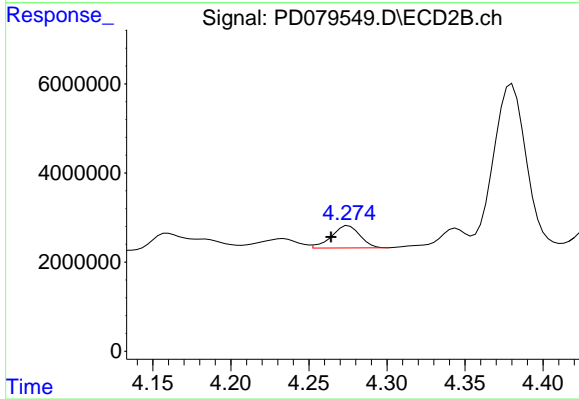


#4 Heptachlor  
 R.T.: 3.977 min  
 Delta R.T.: -0.005 min  
 Response: 68014936  
 Conc: 22.27 ng/ml

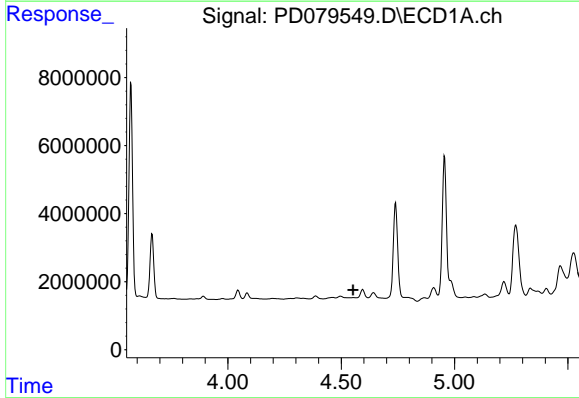


#5 Aldrin  
 R.T.: 5.270 min  
 Delta R.T.: -0.026 min  
 Response: 37014091  
 Conc: 14.36 ng/ml

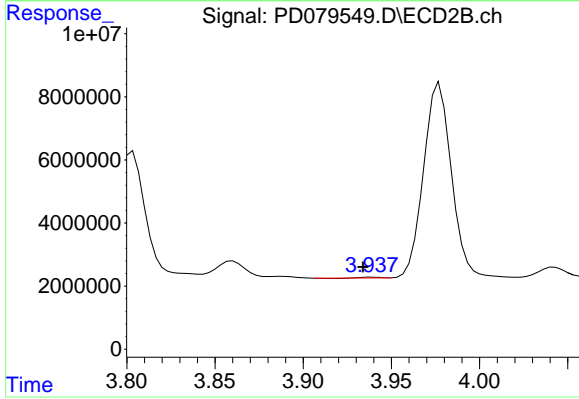
Instrument :  
 ECD\_D  
 ClientSampleId :



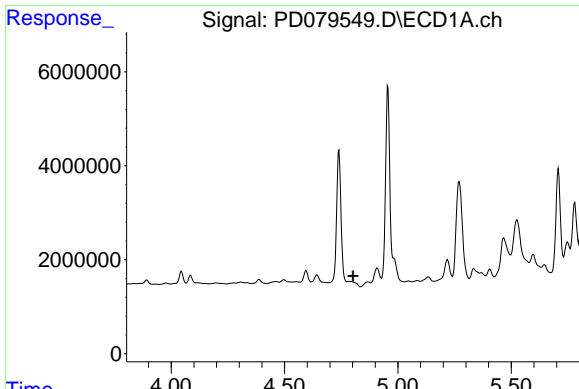
#5 Aldrin  
 R.T.: 4.275 min  
 Delta R.T.: 0.011 min  
 Response: 6367789  
 Conc: 1.95 ng/ml



#6 beta-BHC  
 R.T.: 0.000 min  
 Exp R.T. : 4.552 min  
 Response: 0  
 Conc: N.D.



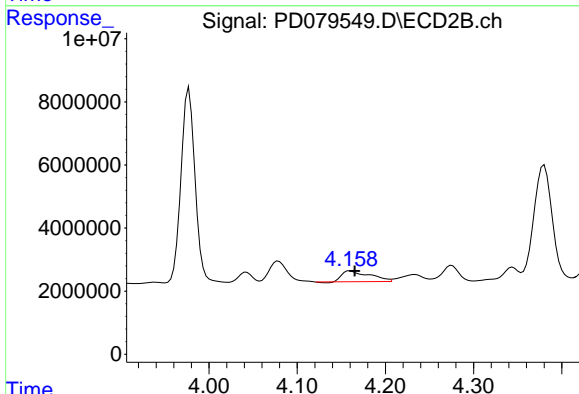
#6 beta-BHC  
 R.T.: 3.939 min  
 Delta R.T.: 0.005 min  
 Response: 130251  
 Conc: 0.09 ng/ml



#7 delta-BHC

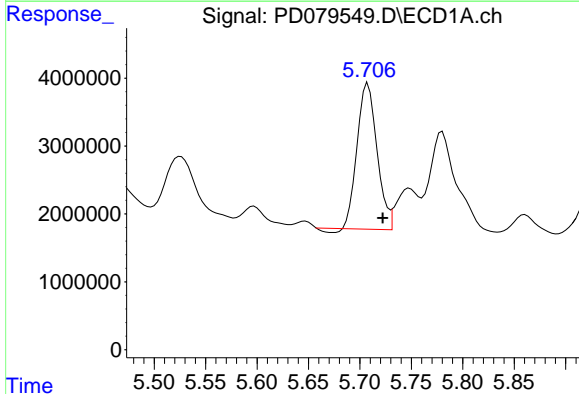
R.T.: 0.000 min  
 Exp R.T.: 4.802 min  
 Response: 0  
 Conc: N.D.

Instrument :  
 ECD\_D  
 ClientSampleId :



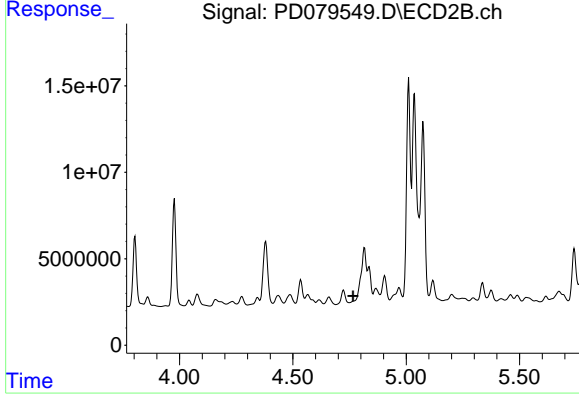
#7 delta-BHC

R.T.: 4.160 min  
 Delta R.T.: -0.005 min  
 Response: 7520949  
 Conc: 2.25 ng/ml



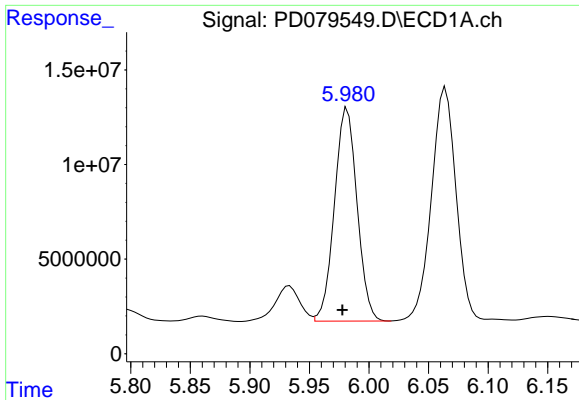
#8 Heptachlor epoxide

R.T.: 5.708 min  
 Delta R.T.: -0.014 min  
 Response: 28705175  
 Conc: 12.25 ng/ml



#8 Heptachlor epoxide

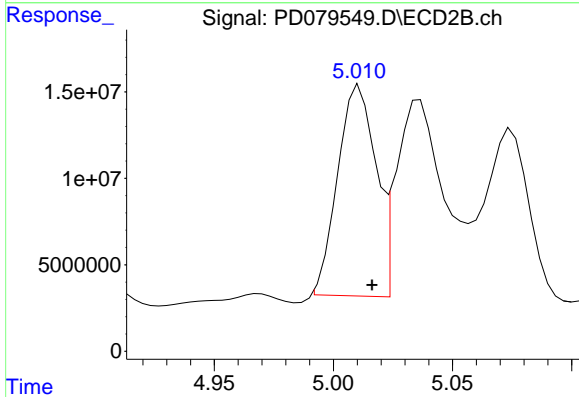
R.T.: 0.000 min  
 Exp R.T.: 4.766 min  
 Response: 0  
 Conc: N.D.



#10 gamma-Chlordane

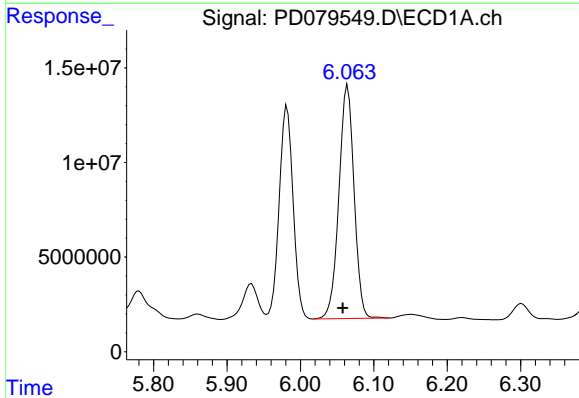
R.T.: 5.982 min  
 Delta R.T.: 0.004 min  
 Response: 148718353  
 Conc: 64.87 ng/ml

Instrument :  
 ECD\_D  
 ClientSampleId :



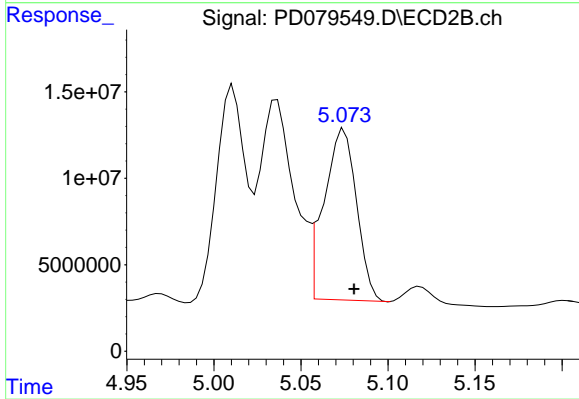
#10 gamma-Chlordane

R.T.: 5.011 min  
 Delta R.T.: -0.005 min  
 Response: 134864444  
 Conc: 47.00 ng/ml



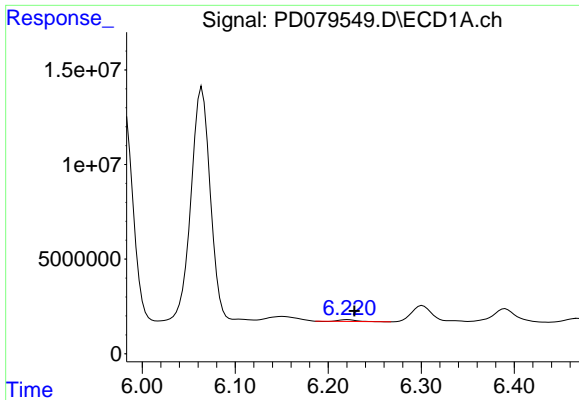
#11 alpha-Chlordane

R.T.: 6.064 min  
 Delta R.T.: 0.006 min  
 Response: 177132461  
 Conc: 77.68 ng/ml



#11 alpha-Chlordane

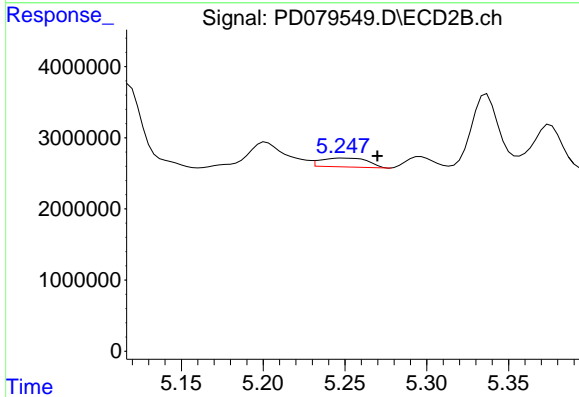
R.T.: 5.075 min  
 Delta R.T.: -0.006 min  
 Response: 128438589  
 Conc: 44.75 ng/ml



#12 4,4'-DDE

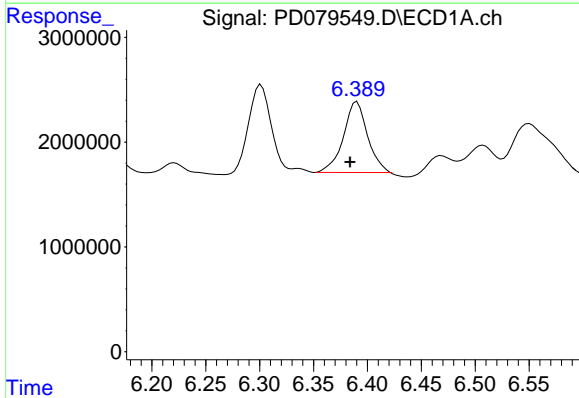
R.T.: 6.221 min  
 Delta R.T.: -0.007 min  
 Response: 1056930  
 Conc: 0.50 ng/ml

Instrument :  
 ECD\_D  
 ClientSampleId :



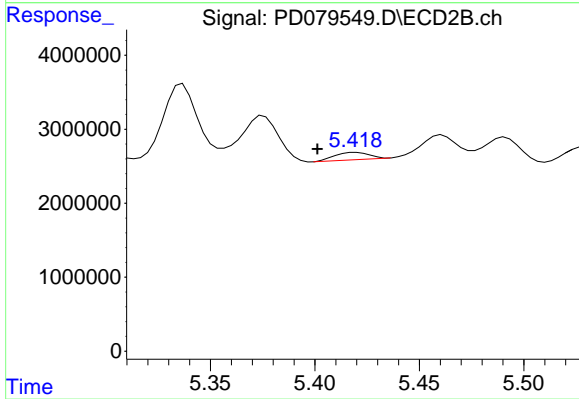
#12 4,4'-DDE

R.T.: 5.249 min  
 Delta R.T.: -0.021 min  
 Response: 2499494  
 Conc: 0.94 ng/ml



#13 Dieldrin

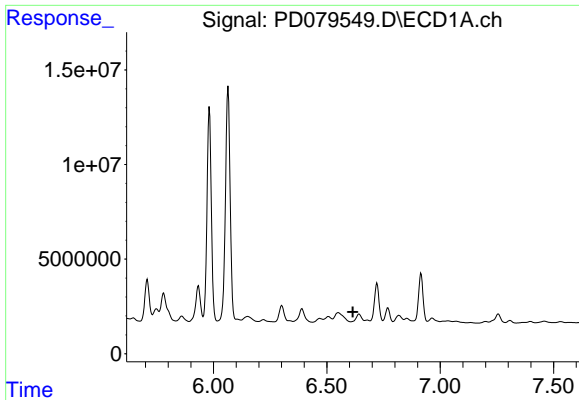
R.T.: 6.390 min  
 Delta R.T.: 0.006 min  
 Response: 10329486  
 Conc: 4.44 ng/ml



#13 Dieldrin

R.T.: 5.420 min  
 Delta R.T.: 0.018 min  
 Response: 1147827  
 Conc: 0.39 ng/ml

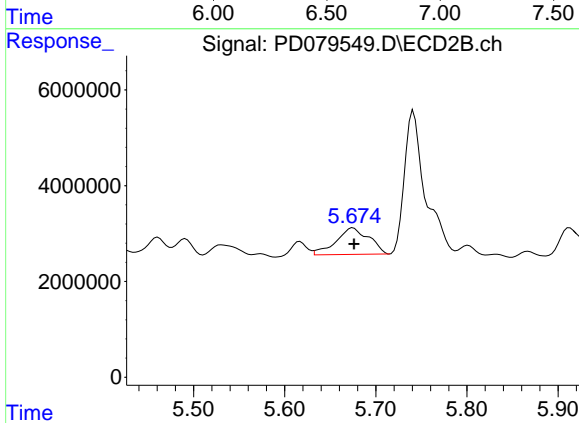




#14 Endrin

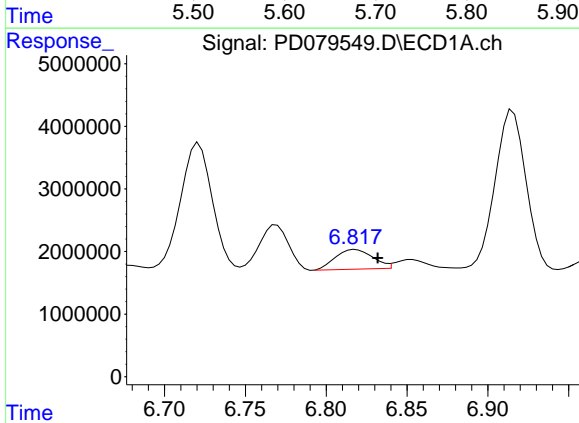
R.T.: 6.642 min  
 Delta R.T.: 0.028 min  
 Response: -1546180  
 Conc: N.D.

Instrument :  
 ECD\_D  
 ClientSampleId :



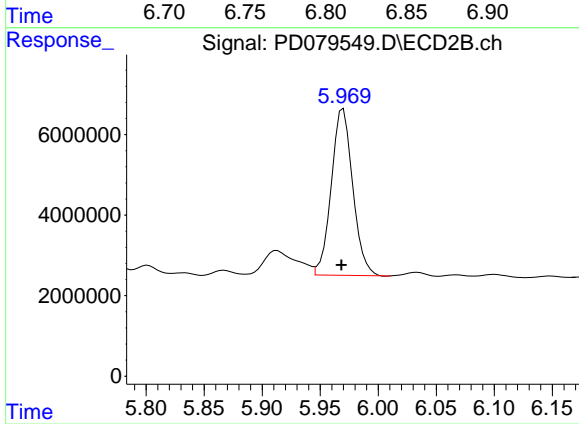
#14 Endrin

R.T.: 5.675 min  
 Delta R.T.: -0.001 min  
 Response: 13908844  
 Conc: 5.44 ng/ml



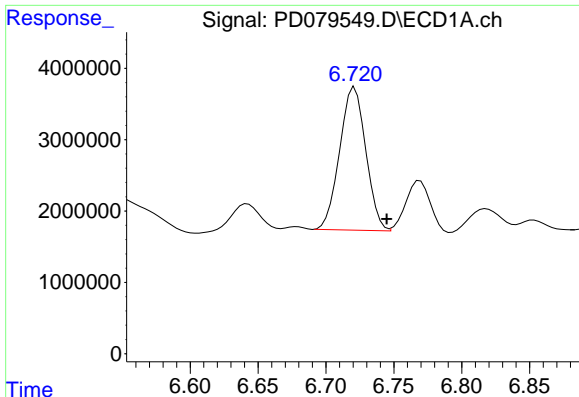
#15 Endosulfan II

R.T.: 6.818 min  
 Delta R.T.: -0.014 min  
 Response: 5056157  
 Conc: 2.48 ng/ml



#15 Endosulfan II

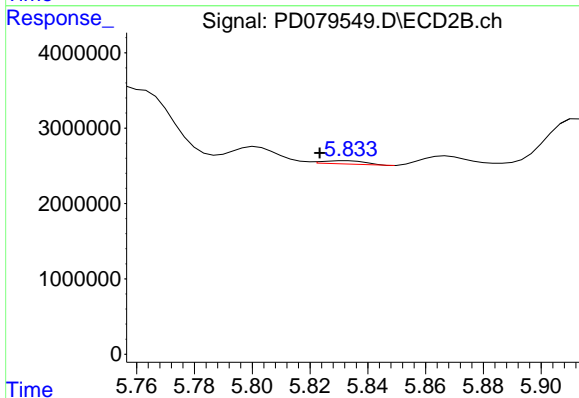
R.T.: 5.970 min  
 Delta R.T.: 0.002 min  
 Response: 53308487  
 Conc: 21.35 ng/ml



#16 4,4'-DDD

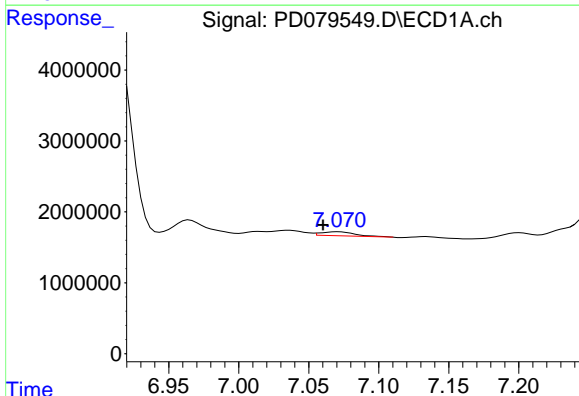
R.T.: 6.721 min  
 Delta R.T.: -0.024 min  
 Response: 26874637  
 Conc: 15.29 ng/ml

Instrument :  
 ECD\_D  
 ClientSampleId :



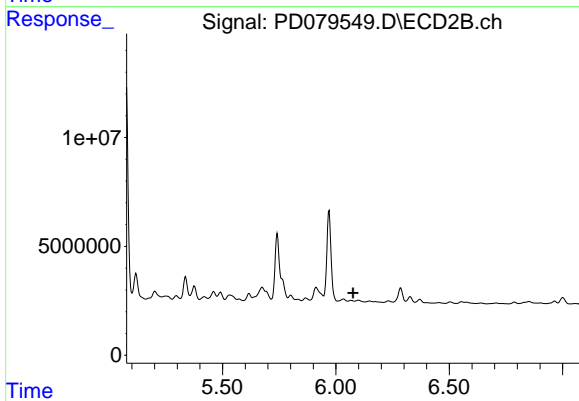
#16 4,4'-DDD

R.T.: 5.833 min  
 Delta R.T.: 0.010 min  
 Response: 424720  
 Conc: 0.19 ng/ml



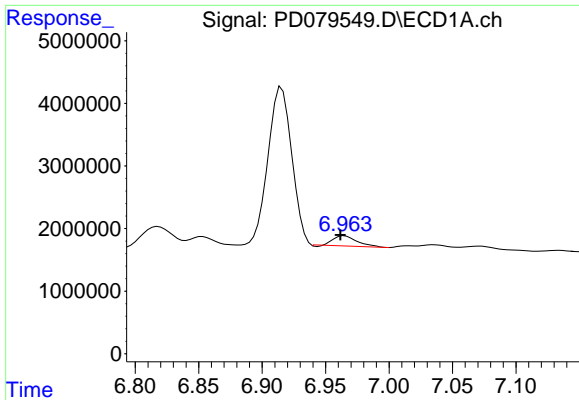
#17 4,4'-DDT

R.T.: 7.071 min  
 Delta R.T.: 0.011 min  
 Response: 856163  
 Conc: 0.45 ng/ml



#17 4,4'-DDT

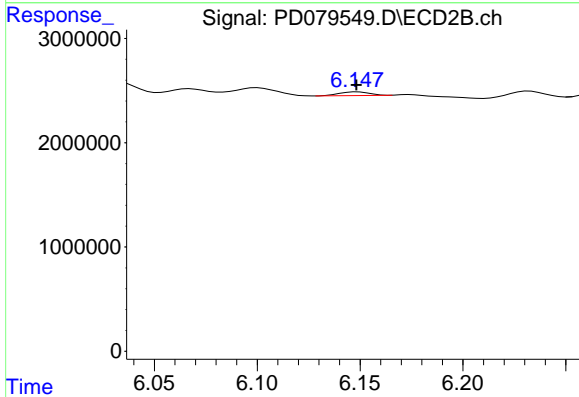
R.T.: 6.068 min  
 Delta R.T.: -0.008 min  
 Response: -364055  
 Conc: N.D.



#18 Endrin aldehyde

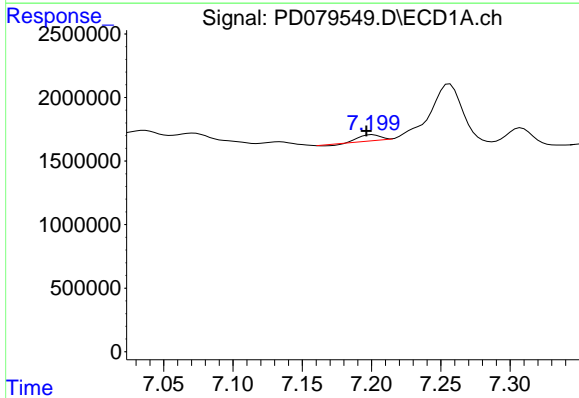
R.T.: 6.965 min  
 Delta R.T.: 0.003 min  
 Response: 2120448  
 Conc: 1.37 ng/ml

Instrument :  
 ECD\_D  
 ClientSampleId :



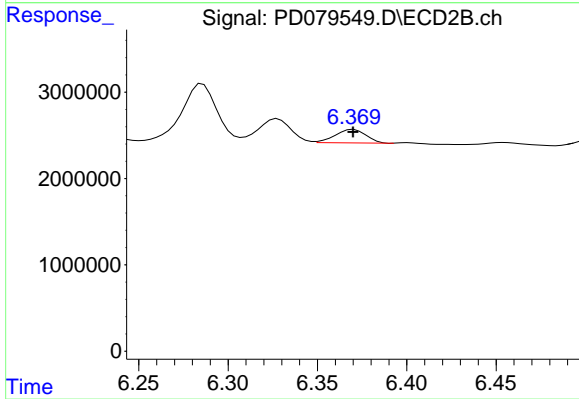
#18 Endrin aldehyde

R.T.: 6.149 min  
 Delta R.T.: 0.000 min  
 Response: 360527  
 Conc: 0.19 ng/ml



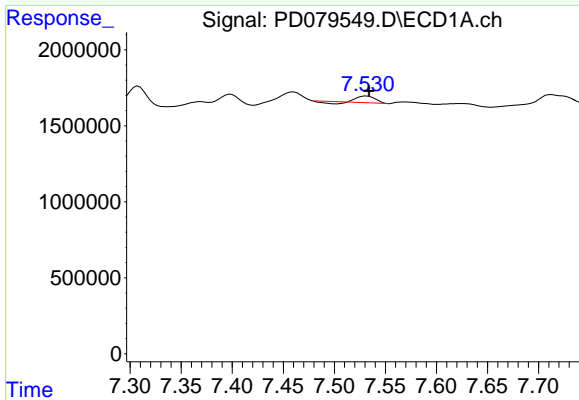
#19 Endosulfan Sulfate

R.T.: 7.201 min  
 Delta R.T.: 0.005 min  
 Response: 416977  
 Conc: 0.21 ng/ml



#19 Endosulfan Sulfate

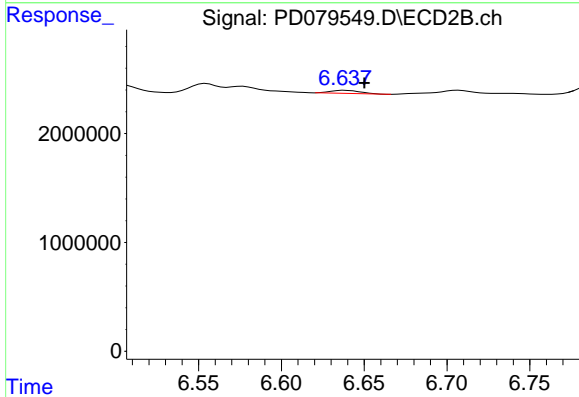
R.T.: 6.370 min  
 Delta R.T.: 0.000 min  
 Response: 1879225  
 Conc: 0.80 ng/ml



#20 Methoxychlor

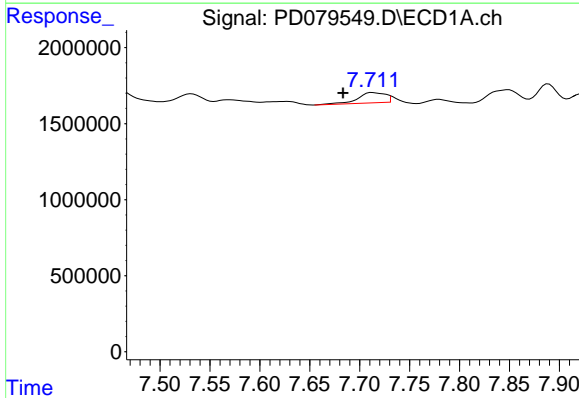
R.T.: 7.531 min  
 Delta R.T.: -0.003 min  
 Response: 451612  
 Conc: 0.41 ng/ml

Instrument :  
 ECD\_D  
 ClientSampleId :



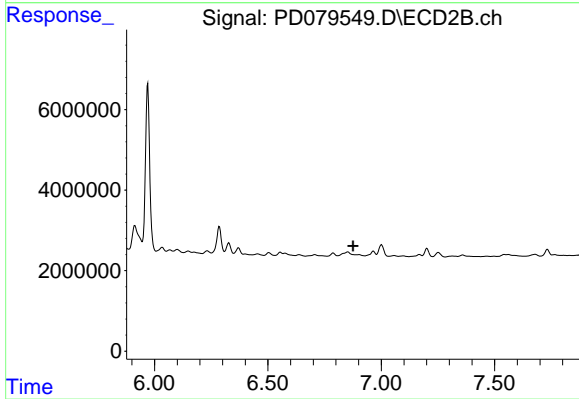
#20 Methoxychlor

R.T.: 6.639 min  
 Delta R.T.: -0.012 min  
 Response: 343645  
 Conc: 0.25 ng/ml



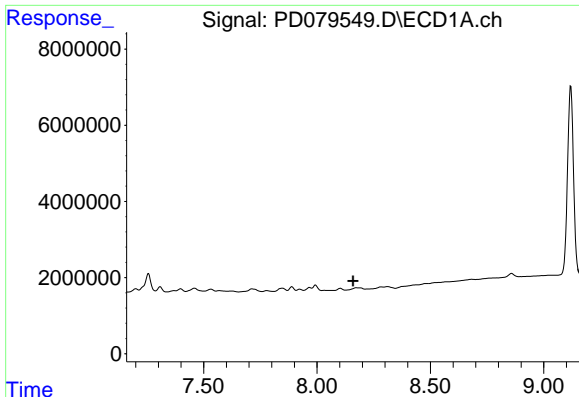
#21 Endrin ketone

R.T.: 7.712 min  
 Delta R.T.: 0.029 min  
 Response: 1324956  
 Conc: 0.61 ng/ml



#21 Endrin ketone

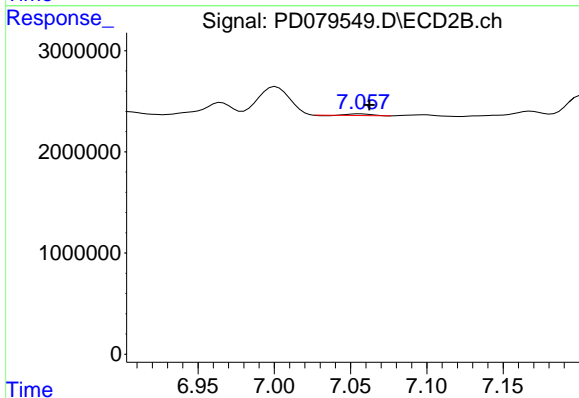
R.T.: 0.000 min  
 Exp R.T. : 6.876 min  
 Response: 0  
 Conc: N.D.



#22 Mirex

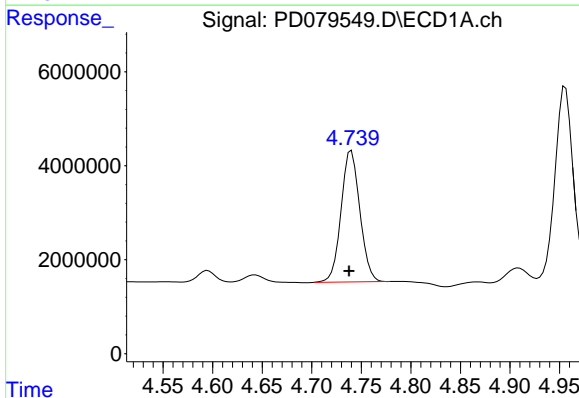
R.T.: 8.173 min  
 Delta R.T.: 0.014 min  
 Response: -8312  
 Conc: N.D.

Instrument :  
 ECD\_D  
 ClientSampleId :



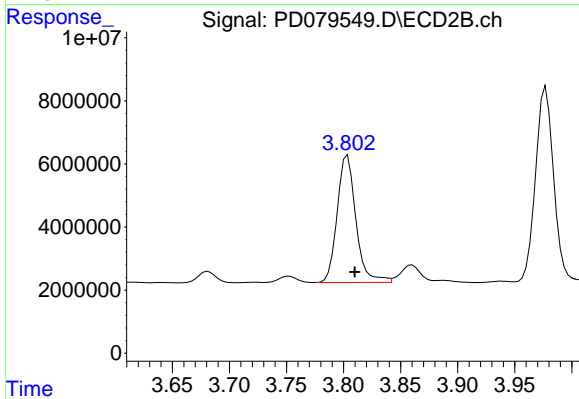
#22 Mirex

R.T.: 7.056 min  
 Delta R.T.: -0.006 min  
 Response: 152177  
 Conc: 0.07 ng/ml



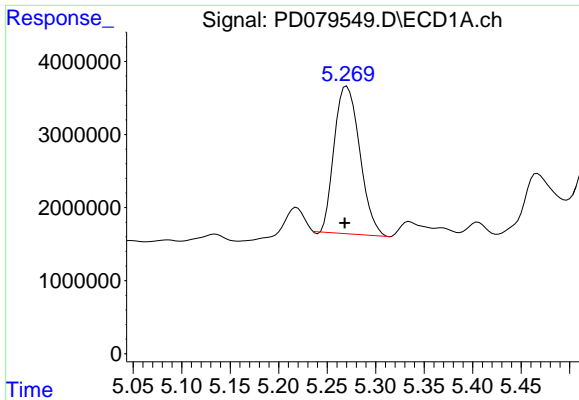
#23 Chlordane-1

R.T.: 4.740 min  
 Delta R.T.: 0.002 min  
 Response: 36908843  
 Conc: 474.72 ng/ml



#23 Chlordane-1

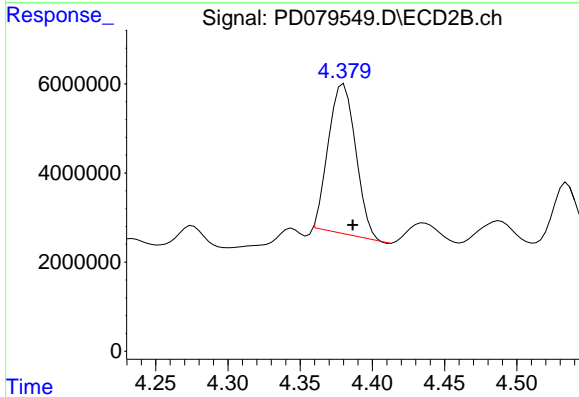
R.T.: 3.803 min  
 Delta R.T.: -0.006 min  
 Response: 46047674  
 Conc: 530.17 ng/ml



#24 Chlordane-2

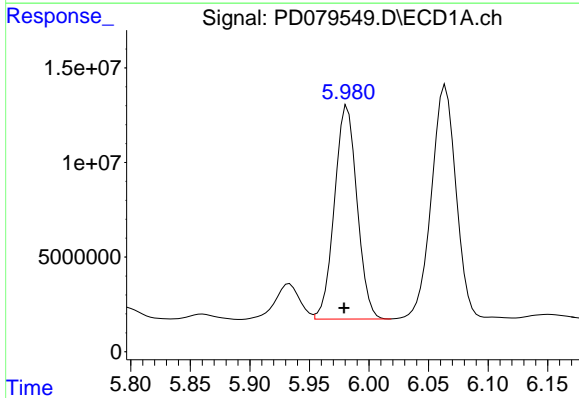
R.T.: 5.270 min  
 Delta R.T.: 0.002 min  
 Response: 37014091  
 Conc: 463.67 ng/ml

Instrument :  
 ECD\_D  
 ClientSampleId :



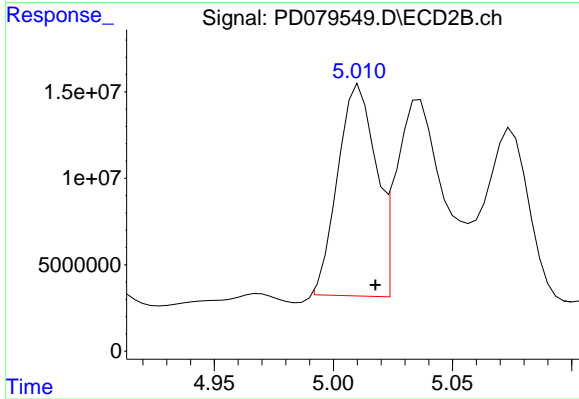
#24 Chlordane-2

R.T.: 4.380 min  
 Delta R.T.: -0.006 min  
 Response: 44196965  
 Conc: 486.43 ng/ml



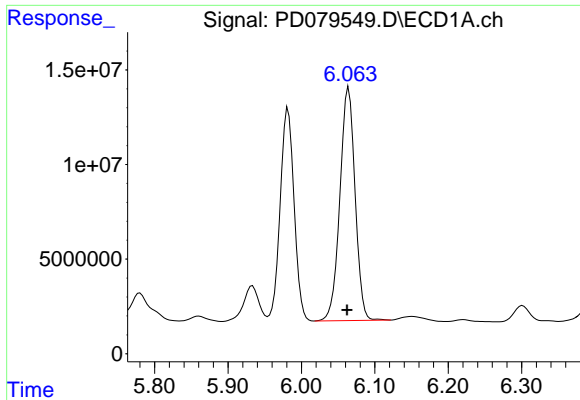
#25 Chlordane-3

R.T.: 5.982 min  
 Delta R.T.: 0.003 min  
 Response: 148718353  
 Conc: 479.73 ng/ml



#25 Chlordane-3

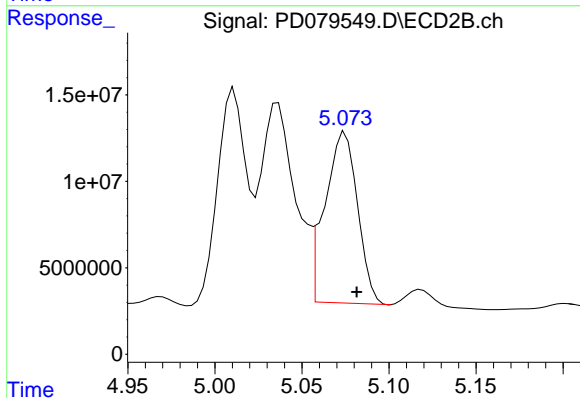
R.T.: 5.011 min  
 Delta R.T.: -0.007 min  
 Response: 134864444  
 Conc: 505.62 ng/ml



#26 Chlordane-4

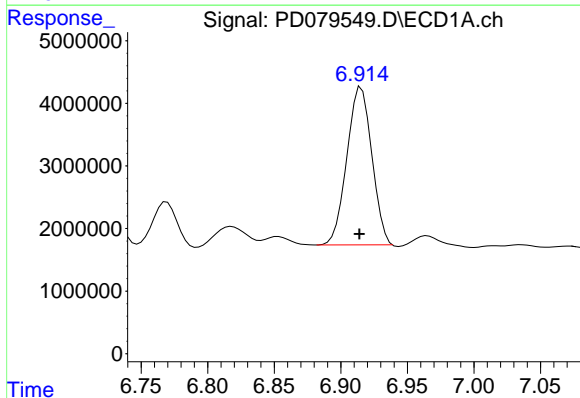
R.T.: 6.064 min  
 Delta R.T.: 0.002 min  
 Response: 177132461  
 Conc: 476.77 ng/ml

Instrument :  
 ECD\_D  
 ClientSampleId :



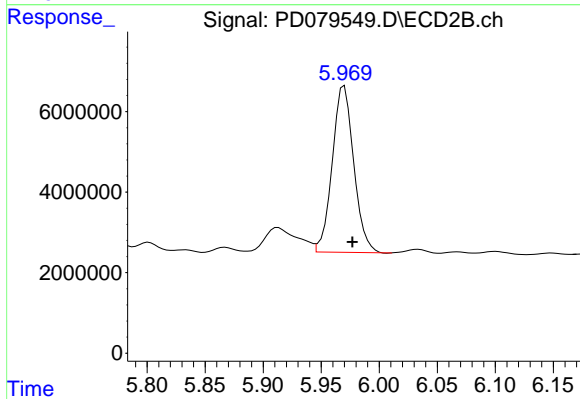
#26 Chlordane-4

R.T.: 5.075 min  
 Delta R.T.: -0.006 min  
 Response: 128438589  
 Conc: 523.43 ng/ml



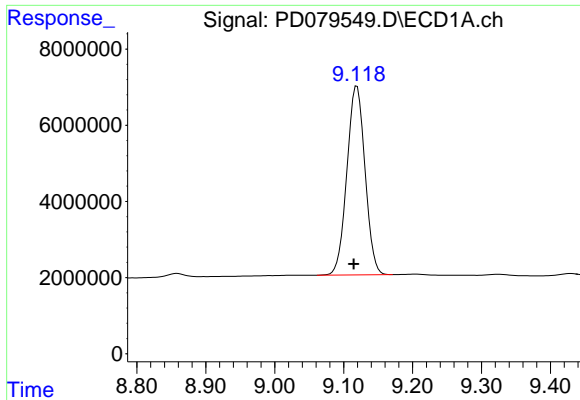
#27 Chlordane-5

R.T.: 6.915 min  
 Delta R.T.: 0.001 min  
 Response: 32991955  
 Conc: 469.53 ng/ml



#27 Chlordane-5

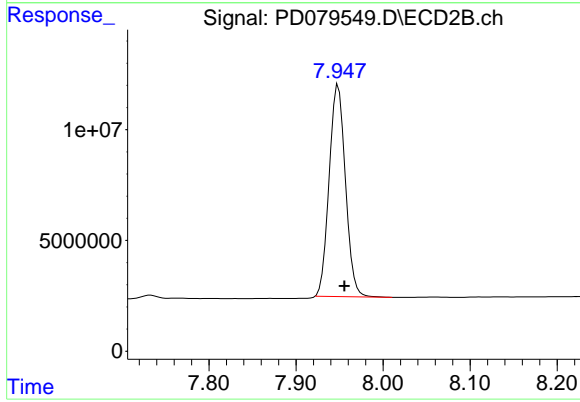
R.T.: 5.970 min  
 Delta R.T.: -0.007 min  
 Response: 53308487  
 Conc: 534.88 ng/ml



#28 Decachlorobiphenyl

R.T.: 9.119 min  
Delta R.T.: 0.005 min  
Response: 90633100  
Conc: 45.18 ng/ml

Instrument :  
ECD\_D  
ClientSampleId :



#28 Decachlorobiphenyl

R.T.: 7.949 min  
Delta R.T.: -0.007 min  
Response: 124303298  
Conc: 51.00 ng/ml